

## ARDIDEN QUARTERLY ACTIVITIES REPORT – QUARTER ENDING 31 DECEMBER 2023

### HIGHLIGHTS

#### Pickle Lake Gold Project

- Review continued on the historical and recent results to understand the controls over the Western Hub, specifically the Dorothy, Dobie, Tonsil and Esker prospects, surrounding Barrick’s past producing Golden Patricia mine. Work included a structural framework interpretation with renowned structural geologist Leigh Rankin.

#### Corporate:

- Appointment of highly experienced mining executive, Mr Douglas Jendry as Independent Non-Executive Director effective 25 January 2024.
- The Company had a strong cash balance at 31 December 2023 of A\$7.64 million, with a further A\$4.52 million (CAD\$4.09 million) on deposit with Canada Revenue Agency (CRA).
- Ardiden continues to actively pursue acquisition opportunities.

Ardiden Limited (‘Ardiden’ or ‘the Company’) (ASX: ADV) is pleased to report on its Quarterly Activities at its highly prospective 100% owned Pickle Lake Gold Project in Northwest Ontario, Canada). Ardiden’s strategic landholding is situated on the same geological belt as Red Lake, the ‘Uchi’ Subprovince, which has produced over 30M oz of gold to date. (Figure 1).



Figure 1– Location of Ardiden’s Pickle Lake Gold project within the Uchi Belt of northwest Ontario<sup>1</sup>.

<sup>1</sup> \* Source S&P Global Market Intelligence 2023

## PICKLE LAKE GOLD PROJECT

The Pickle Lake Gold Project is comprised of 1,088 km<sup>2</sup> highly prospective landholdings which includes three existing gold deposits (Kasagiminnis, Dorothy and Dobie) and 23 other identified brownfield and greenfield gold prospects over a 100km wide belt (Figure 2).

Work during the quarter comprised a technical review across the Western Hub, to gain a better understanding of results from historic and recent drilling and help identify high potential areas for future exploration. Work to date has focused mostly on the Tonsil, Dobie and Esker areas with future efforts shifting to the South Limb, 250 North and West Pickle Areas.

A review of historic geophysical data covering the New Patricia Property was also completed to try and gain a better understanding of geological structures and potential exploration targets with the assistance of structural geologist Leigh Rankin (Figure 3) and Ardiden's Exploration Manager Haydn Daxter. Review of the results are continuing.

The Western Hub comprises 8 prospects that are located within close proximity to the Bear Head Shear Zone. It is approximately 70km west of Pickle Lake and contains over 300km<sup>2</sup> of prospective claims and surrounds the past producing Golden Patricia Mine (Barrick).

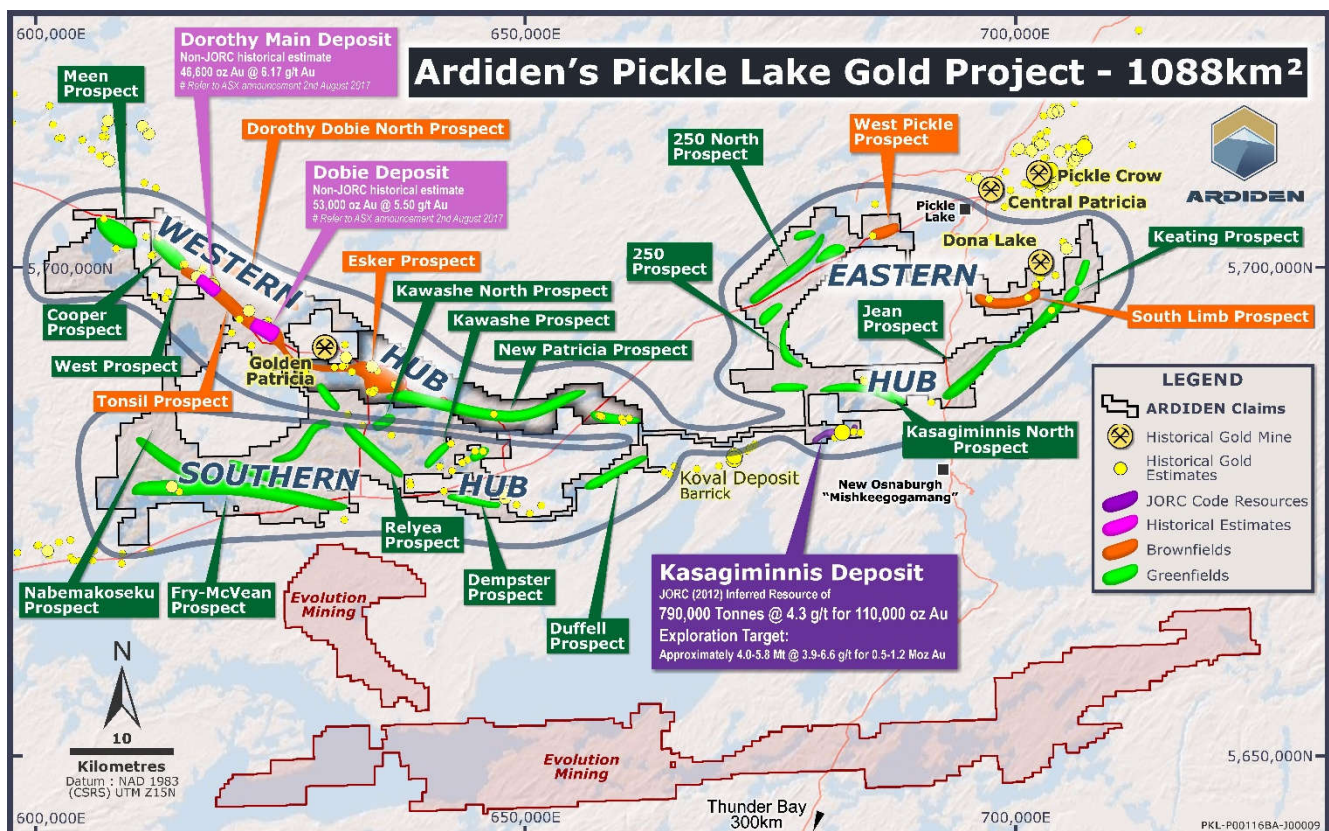


Figure 2 – Location of Ardiden's Western Hub from Pickle Lake.

*Kasagiminnis Deposit (Refer ASX 10 September 2019). The potential quantity and grades stated for the Exploration Target at Kasagiminnis is conceptual in nature and there has been insufficient exploration to define Mineral Resources across the exploration target area. It is uncertain if further exploration of these targets will produce results that permit additional Mineral Resources to be estimated.*

The Company continues to evaluate alternate logistical programs to decrease helicopter dependency. This evaluation encompassed both the Western Hub and the Eastern Hub, given the Eastern Hub's proximity to Pickle Lake township and its potential road access.



Figure 3 – Leigh Rankin, structural geologist conducting workshop at Ardiden’s office.

### Permitting and Tenure

The Company remains substantially permitted with all prospects currently active for early exploration activity across the Pickle Lake Gold Project (Figure 4). The next permit renewal (Western Patricia Prospect) is due in November 2024.

Table 1 – Mines Department Granted Early Exploration Permits (PLGP).

Permit #	Prospect	FN Communities
PR-23-000205	Kasagiminnis	Mishkeegogamang
PR-23-000216	South Limb	Mishkeegogamang

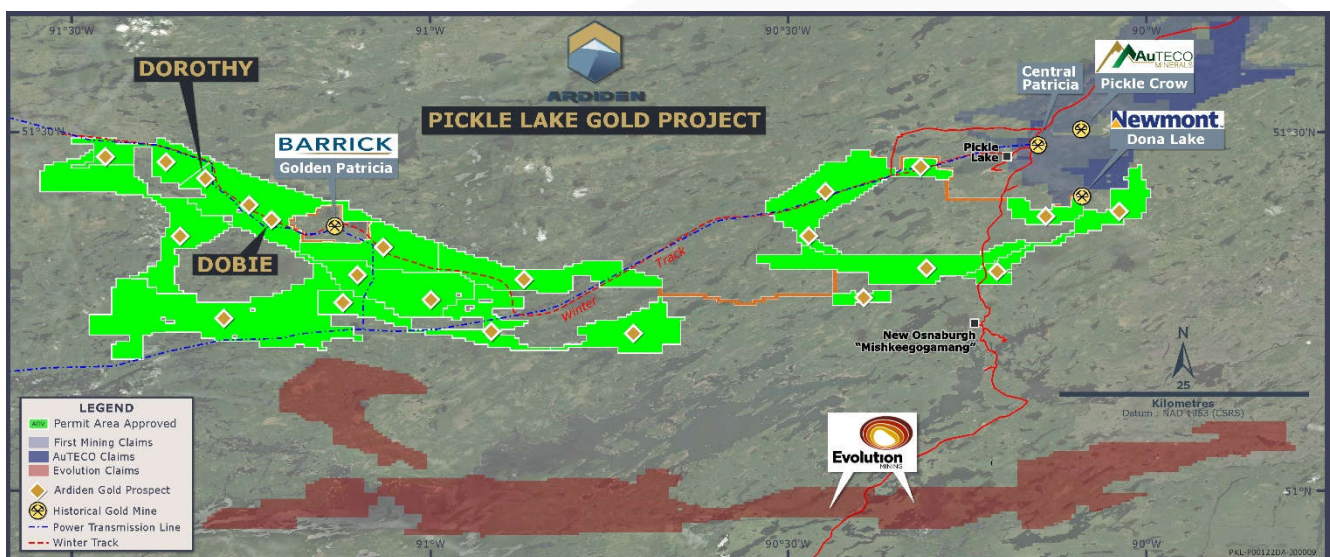


Figure 4 – Status of Permitting at the District-Scale Pickle Lake Gold project.



## CORPORATE

### **Board Changes**

Subsequent to the end of the quarter, experienced mining executive Mr Douglas Jendry was appointed as an Independent, Non-Executive Director. Mr Jendry is an accomplished geologist with over 30 years of international experience in mining and capital markets. He has been involved as an executive and non-executive director for several mining companies with particular focus on companies listed in Australia and London. He has served as Chair of Capricorn Metals and Talon Energy and as a past director of Toubani Resources Limited.

Mr Jendry is a technical consultant to the Nero Resource Fund, a Perth based emerging small resource fund investing in companies listed on Australian, UK and Canadian based exchanges which holds a substantial shareholding in Ardiden.

In addition, Mr Matthew Freedman has provided his resignation as Non-Executive Director of the Company, effective 25 January 2024, to focus on other business interests.

### **Financial Position**

The Company had a strong cash balance at 31 December 2023 of **A\$7.64 million**.

In addition to the cash balance, Canada Revenue Agency (CRA) continues to hold part proceeds as withholding for the disposal of the lithium assets. A total of CAD\$4.09 million (A\$4.52 million) remains on deposit with CRA. Ardiden expects the majority of the funds on deposit to be remitted back to Ardiden in CY 2024 following receipt of the tax certificates from CRA.

Ardiden continues to retain ~13 million shares in Green Technology Metals (ASX: GT1), which it acquired as part proceeds from the sale of Ardiden's lithium assets. These shares were released from escrow on 10 November 2023. The current value of the holding is ~\$2.02M<sup>2</sup>.

Cash outflows for the quarter totalled A\$1,085k which substantially consisted of exploration activity and related capital of \$496k, staff costs \$328k, and corporate administration of \$261k offset by receipt of interest of \$116k. In addition to interest, \$216k was received from CRA as part refund of the withholding tax described above.

Payments to related parties and their associates totalled \$139k (consisting of CEO salary, Non-executive Directors fees including salaries, and superannuation payments).

The detail of the cash receipts and payments is set out in Appendix 5B.

### **Share Consolidation**

As approved by shareholders at the Company's Annual General Meeting held 22 November 2023, the Company has consolidated its issued capital on the basis that every forty-three (43) fully paid ordinary Shares in the capital of the Company be consolidated into one fully paid ordinary Share. The consolidation was completed on 24 November 2023 with the ensuing issued capital as follows:

DESCRIPTION	#
ORDINARY FULLY PAID SHARES	62,517,506
OPTIONS EXPIRING 31-AUG-2024 EX \$0.774	340,115
OPTIONS EXPIRING 20-APR-2026 EX \$0.946	232,558
PERFORMANCE RIGHTS EXPIRING 24-APR-2027	174,418
OPTIONS EXPIRING 24-APR-2027 EX \$0.344	58,139
OPTIONS EXPIRING 13-JUN-2027 EX \$0.43	348,836
OPTIONS EXPIRING 14-JUN-2027 EX \$0.301	46,511
OPTIONS EXPIRING 20-APR-2026 EX \$0.8385	930,813

<sup>2</sup> As at closing price (\$0.155) of GT1 on 29 January 2024

### ***New Opportunities***

The Company remains focused on understanding the structural controls and various mineralisation styles at the Pickle Lake Gold Project. However, Ardiden continues to evaluate new exploration and project opportunities that it believes complement the existing project or where its experience and skills set can provide a competitive advantage.

### ***Office Relocation***

The registered office and principal place of business relocated to 45 Ventnor Ave, West Perth effective 29 January 2024. The postal box and phone number remain the same.

This information is authorised for ASX release by the Board.

### **ENDS**

#### **For further information:**

Greg Romain  
CEO and Managing Director  
Tel: +1 647 300 5417  
info@ardiden.com.au

More information is available from the Company's website: [www.ardiden.com.au](http://www.ardiden.com.au)

#### ***About Ardiden***

*Ardiden is focused on systematic gold exploration at its 100%- Owned Pickle Lake Gold Project in the well-endowed Uchi Geological Subprovince of north-west Ontario, Canada. The Company's District-Scale Gold Project is the largest continuous gold land holding in the Uchi Belt, where Barrick, Newmont, Kinross, and Evolution all hold significant gold mine and exploration assets. Ardiden's strategic landholding is situated on the same geological belt as Red Lake, the 'Uchi' Subprovince, which has produced over 30M oz of gold to date and where new Tier-1 gold discoveries are still being made, such as Kinross Gold Corporation's (NYSE:KGC)'s Great Bear Project, which reported a maiden resource of 5MOZ Au on 13 February 2023.*

#### ***Competent Person's Statement***

The Company confirms that it is not aware of any other new information or data that materially affects the information included in the original market announcements referred to above, and in the case of estimates of mineral resources, that all material assumptions and technical parameters underpinning the estimates in the relevant market announcement continue to apply and have not materially changed. The Company confirms that the form and context in which the Competent Person's findings are presented have not been materially modified from the original market announcements.

#### ***Forward Looking Statement***

This announcement may contain some references to forecasts, estimates, assumptions and other forward-looking statements. Although the company believes that its expectations, estimates and forecast outcomes are based on reasonable assumptions, it can give no assurance that they will be achieved. They may be affected by a variety of variables and changes in underlying assumptions that are subject to risk factors associated with the nature of the business, which could cause actual results to differ materially from those expressed herein. All references to dollars (\$) and cents in this presentation are to Australian currency, unless otherwise stated. Investors should make and rely upon their own enquires and assessments before deciding to acquire or deal in the Company's securities.

## QUARTERLY TENEMENT SUMMARY

All of the Company's tenements are granted and located in Ontario, Canada.

1. The mining tenements held at the end of the quarter and their location.

Gold Projects	Tenement Number/Claim ID	Beneficial Percentage Interest
Pickle Lake - Connections	536230, 536231, 536232, 536233, 536234, 536235, 536236, 536237, 536238, 536239, 536240, 536241, 536242, 536243, 536244, 536245, 536246, 536247, 536248, 536249, 541336, 541337, 541341, 541344, 541345, 541346, 541350, 541355, 541358, 541359, 541360, 541361, 541366, 541367, 541368, 541369, 541370, 541371, 541372, 541373, 541374, 541375, 541376, 541377, 541378, 541379, 541380, 541381, 541382, 541383, 541384, 541385, 541386, 541387, 541388, 541389, 541390, 541391, 541392, 541393, 541393, 541394, 541395, 541396, 541397, 541398, 541399, 541400, 541401, 566571, 566572, 566573, 566574, 566575, 566576, 566577, 566578, 566579, 566580, 566581, 566582, 566583, 566584, 566585, 566586, 566587, 566588, 566589, 566590, 566591, 566592, 566593, 566594, 566595, 566596, 566597, 566598, 566599, 566600, 566601, 566602, 566603, 566604, 566605, 566606, 566607, 566608, 566609, 566610, 566611, 566612, 566613, 566614, 566615, 566616, 566617.	100%
Pickle Lake – Dempster Lake	579770, 579771, 579772, 579773, 579774, 579997, 579998, 580004, 580005, 580006, 580007, 580008, 580009, 580010, 580015, 580016, 580017, 580018, 580019, 580020, 580021, 580022, 580023, 580024, 580025, 580026, 580027, 580028, 580029, 580030, 580031, 580032, 580033, 580034, 580035, 580036, 580037, 580038, 580039, 580040, 580041, 580042, 580043, 580044, 580045, 580046, 580047, 580048, 580049, 580050, 580051, 580052, 580053, 580054, 580055, 580056, 580057, 580058, 580059, 580060, 580061, 580062, 580063, 580064, 580065, 580066, 580067, 580068, 580069, 580070, 580071, 580072, 580073, 580074, 580075, 580076, 580077, 580078, 580079, 580080, 580081, 580082, 580083, 580084, 580085, 580086, 580087, 580088, 580089, 580090, 580091, 580092, 580093, 580094, 580095, 580096, 580097, 580098, 580099, 580100, 580101, 580102, 580103, 580104, 580105, 580106, 580107, 580108, 580109, 580110, 580111, 580112, 580113, 580114, 580115, 580116, 580117, 580118, 580119, 580120, 580121, 580122, 580123, 580124, 580125, 580126, 580127, 580128, 580129, 580130, 580131, 580132, 580133, 580134, 580135, 580136, 580137, 580138, 580139, 580140, 580141, 580142, 580151, 580152, 580153, 580154, 580155, 580156, 580189, 580190, 580295, 580296, 580297, 580298, 580299, 580300, 580301, 580302, 580303, 580304, 580305, 580306, 580307, 580308, 580309, 580310, 580311, 580312, 580313, 580314, 580315, 580316, 580317, 580318, 580319, 580320, 580321, 580322, 580323, 580324, 580325, 580326, 580327, 580328, 580329, 580330, 580331, 580332, 580333, 580334, 580335, 580336, 580337, 580338, 580339, 580340, 580341, 580342, 580343, 580344, 695376, 704865, 704866, 704867, 704868, 704869, 704870, 704871, 704872, 704873, 704874, 704875, 704876, 704877, 704878, 704879, 704880, 704881, 704882, 704883, 704885, 704886, 704887, 704888, 704889, 704890, 704891, 704893.	100%
Pickle Lake – Dorothy Dobie	104984, 105912, 106176, 106277, 106701, 108546, 108547, 110665, 112086, 112889, 112990, 123364, 124723, 128625, 129964, 130012, 130849, 130944, 130945, 131221, 133040, 133429, 134232, 134448, 134753, 135762, 136226, 140102, 140103, 140104, 141205, 143008, 143009, 145694, 146037, 146857, 146858, 147714, 149493, 149494, 150199, 150524, 150822, 150823, 154016, 154661, 155274, 156088, 157127, 159811, 161295, 161344, 161961, 162581, 162582, 163914, 163956, 166547, 166548, 168691, 169333, 169948, 176602, 176661, 176770, 176793, 176991, 178279, 178630, 178776, 181433, 181634, 183363, 183657, 183658, 183659, 183660, 183661, 183802, 186059, 186838, 186839, 186840, 187792, 187793, 192633, 193812, 195459, 195771, 196502,	100%

Gold Projects	Tenement Number/Claim ID	Beneficial Percentage Interest
	200893, 201767, 205183, 205184, 205185, 207317, 207318, 208735, 208736, 209087, 212985, 213019, 213020, 214000, 214531, 215430, 215446, 215505, 217414, 221873, 223180, 223229, 225203, 231209, 231210, 231211, 233344, 234028, 234647, 235998, 236504, 236505, 236506, 236858, 237737, 237738, 242025, 242026, 242027, 242865, 242885, 245369, 246370, 246778, 248523, 250184, 250376, 250377, 250729, 250918, 250919, 250920, 251226, 251227, 252855, 253832, 253833, 253834, 254138, 254139, 254140, 255485, 255486, 257815, 257816, 261457, 261968, 262541, 265913, 265914, 269312, 269419, 272648, 273934, 273935, 274481, 277187, 279407, 279431, 279432, 282045, 282178, 282650, 284007, 287953, 287954, 289318, 290701, 292076, 292077, 292078, 297909, 297946, 298040, 299720, 299721, 300389, 301466, 302098, 302509, 302510, 303780, 308300, 308702, 308703, 308704, 310059, 310268, 310973, 311804, 316960, 316961, 316984, 316985, 317711, 319530, 319856, 322018, 323277, 323278, 323279, 329251, 329351, 332358, 333405, 334448, 336319, 336320, 337656, 337657, 337827, 337828, 338360, 340200, 340994, 342957, 343786, 343787, 343788, 566618, 566619, 566620, 566621, 566622, 566623, 566624, 566625, 566626, 566627, 566628, 566629, 566630, 566631, 566632, 566633, 566634, 566635, 566636, 566637, 566638, 566639, 566640, 566641, 566642, 566643, 566644, 566645, 566646, 566647, 566648, 566649, 566650, 566651, 566652, 566653, 566654, 566655, 566656, 566657, 566658, 566659, 566660, 566661, 566662, 566663, 566664, 566935, 566936, 566937, 566938, 566939, 566940, 566941, 566942, 566943, 566944, 566945, 566946, 566947, 566948, 566949, 566950, 566951, 566952, 566953, 566954, 566955, 566956, 566957, 566958, 566959, 566960, 566961, 566962, 566963, 566964, 566965, 566966, 566967, 566968, 566969, 566970, 566971, 566972, 566973, 566974, 566975, 566976, 566977, 566978, 566979, 566980, 566981, 566982, 566983, 566984, 695378, 834414.	
Pickle Lake – Dorothy Dobie North	613951, 613952, 613953, 613954, 613955, 613956, 613957, 613958, 613959, 613960, 613961, 613962, 613963, 613964, 613965, 613966, 613967, 613968, 613969, 613970, 613971, 613972, 613973, 613974, 613975, 613976, 613977, 613978, 613979, 613980, 613981, 613982, 613983, 613984, 613985, 613986, 613987, 613988, 613989, 613990, 613991, 613992, 613993, 613994, 613995, 613996, 613997, 613998, 613999, 614000, 614001, 614002, 614003, 614004, 614005, 614006, 614007, 614008, 614009, 614010, 614011, 614012, 614013, 614014, 614015, 614016, 614017, 614018, 614019, 614020, 614021, 614022, 614023, 614024, 614025, 614026, 614027, 614028, 614029, 614030, 614031, 614032, 614033, 614034, 614035, 614036, 614037, 614038, 614039, 614040, 614041, 614042, 614043, 614044, 614045, 614046, 614047, 614048, 614049, 614050, 614051, 614052, 614053, 614054, 614055, 614056, 614057, 614058, 614059, 614060, 614061, 614062, 614063, 614064, 614065, 614066, 614067, 614068, 614069, 614070, 614071, 614072, 614073, 614074, 614075, 614076, 614077, 614078, 614079, 614080, 614081, 614082, 614083, 614084, 614085, 614086, 614087, 614088, 614089, 614090, 614091, 614092, 614093, 614094, 614095, 614096, 614097, 614098, 614099, 614100, 614101, 614102, 614103, 614104, 614105, 614106, 614107, 614108, 614109, 614110, 614111, 614112, 614113, 614114, 614115, 614116, 614117, 614118, 614119, 614120, 614121, 614122, 614123, 614124, 614125, 614126, 614127, 614128, 614129, 614130, 614131, 614132, 614133, 614134, 614135, 614136, 614137, 614138, 614139, 614140, 614141, 614142, 614143, 614144, 614145, 614146, 614147, 614148, 614149, 614150, 614151, 614152, 614153, 614154, 614155, 614156, 614157, 614158, 614159, 614160, 614161, 614162, 614163, 614164, 614165, 614166, 614167, 614168, 614169, 614170, 614171, 614172, 614173, 614174, 614175, 614176, 614177, 614178, 614179, 614180, 614181, 614182, 614183, 614184,	100%

Gold Projects	Tenement Number/Claim ID	Beneficial Percentage Interest
	614185, 614186, 614187, 614188, 614189, 614190, 614191, 614192, 614193, 614194, 614195, 614196, 614197, 614198, 614199, 614200, 614201, 614202, 614203, 614204, 614205, 614206, 614207, 614208, 614209, 614210, 614211, 614212, 614213, 614214, 614215, 614216, 614217, 614218, 614219, 614220, 614221, 614222, 614223, 614224, 614225, 614226, 614227, 614228, 614229, 614230, 614231, 614232, 695374.	
Pickle Lake – Duffell Lake	579696, 579697, 579698, 579699, 579700, 579701, 579702, 579703, 579704, 579705, 579706, 579707, 579708, 579709, 579710, 579711, 579712, 579713, 579714, 579715, 579716, 579717, 579718, 579719, 579720, 579721, 579722, 579723, 579724, 579725, 579726, 579727, 579728, 579729, 579730, 579731, 579732, 579733, 579734, 579735, 579736, 579737, 579738, 579739, 579740, 579741, 579742, 579743, 579744, 579745, 579746, 579747, 579748, 579749, 579750, 579751, 579752, 579753, 579754, 579755, 579756, 579757, 579758, 579759, 579760, 579761, 579762, 579763, 579764, 579765, 579766, 579767, 579768, 579769, 579993, 579994, 579995, 579996, 579999, 580000, 580001, 580002, 580003, 580011, 580012, 580013, 580014, 695351, 695352.	100%
Pickle Lake – Fry-McVean	581408, 581409, 581410, 581411, 581412, 581413, 581414, 581415, 581416, 581417, 581418, 581419, 581420, 581421, 581422, 581423, 581424, 581425, 581426, 581427, 581428, 581429, 581430, 581431, 581432, 581433, 581434, 581435, 581436, 581437, 581438, 581439, 581440, 581441, 581442, 581443, 581444, 581445, 581446, 581447, 581448, 581449, 581450, 581451, 581452, 581453, 581454, 581455, 581456, 581457, 581458, 581459, 581460, 581461, 581462, 581463, 581464, 581465, 581466, 581467, 581468, 581469, 581470, 581471, 581472, 581473, 581474, 581475, 581476, 581477, 581478, 581479, 581480, 581481, 581482, 581483, 581484, 581485, 581486, 581487, 581488, 581489, 581490, 581491, 581492, 581493, 581494, 581495, 581496, 581497, 581498, 581499, 581500, 581501, 581502, 581503, 581504, 581505, 581506, 581507, 581508, 581509, 581510, 581511, 581512, 581513, 581514, 581515, 581516, 581517, 581518, 581519, 581520, 581521, 581522, 581523, 581524, 581525, 581526, 581527, 581528, 581529, 581530, 581531, 581532, 581533, 581534, 581535, 581536, 581537, 581538, 581539, 581540, 581541, 581542, 581543, 581544, 581545, 581546, 581547, 581548, 581549, 581550, 581551, 581552, 581553, 581554, 581555, 581556, 581557, 581558, 581559, 581560, 581561, 581562, 581563, 581564, 581565, 581566, 581567, 581568, 581569, 581570, 581571, 581572, 581573, 581574, 581575, 581576, 581577, 581578, 581579, 581580, 581581, 581582, 581583, 581584, 581585, 581586, 581587, 581588, 581589, 581590, 581591, 581592, 581593, 581594, 581595, 581596, 581597, 581598, 581599, 581600, 581601, 581602, 581603, 581604, 581605, 581606, 581607, 581608, 581609, 581610, 581611, 581612, 581613, 581614, 581615, 581616, 581617, 581618, 581619, 581620, 581621, 581622, 581623, 581624, 581625, 581626, 581627, 581628, 581629, 581630, 581631, 581632, 581633, 581634, 581635, 581636, 581637, 581638, 581639, 581640, 581641, 581642, 581643, 581644, 581645, 581646, 581647, 581648, 581649, 581650, 581651, 581652, 581653, 581654, 581655, 581656, 581657, 581658, 581659, 581660, 581661, 581662, 581663, 581664, 581665, 581666, 581667, 581668, 581669, 581670, 581671, 581672, 581673, 581674, 581675, 581676, 581677, 581678, 581679, 581680, 581681, 581682, 581683, 581684, 581685, 581686, 581687, 581688, 581689, 581690, 581691, 581692, 581693, 581694, 581695, 581696, 581697, 581698, 581699, 581700, 581701, 581702, 581703, 581704, 581705, 581706, 581707, 581726, 581727, 581728, 581729, 581730, 581731, 581732, 581733, 581734, 581735, 581736, 581737, 581738, 581739, 581740, 581741, 581742, 581743, 581744, 581745, 581746, 581747, 581748, 581749, 581750, 581751, 581752, 581753, 581754, 581755, 581756, 581757, 581758,	100%



Gold Projects	Tenement Number/Claim ID	Beneficial Percentage Interest
	581759, 581760, 581761, 581762, 581763, 581764, 581765, 581766, 581767, 581768, 581769, 581770, 581771, 581772, 581773, 581774, 581775, 581779, 581780, 581781, 581782, 581783, 581784, 581785, 581786, 581787, 581788, 581789, 581790, 581791, 581792, 581793, 581794, 581795, 581796, 581797, 581798, 581799, 581800, 581801, 581802, 581803, 581804, 581805, 581806, 581807, 581808, 581809, 581810, 581811, 581812, 581813, 581814, 581815, 581816, 581817, 581818, 581819, 581820, 581821, 581822, 581823, 581824, 581825, 581826, 581827, 581828, 581830, 581831, 581832, 581833, 581834, 581835, 581836, 581837, 581838, 581839, 581840, 581841, 581842, 581843, 581844, 581845, 581846, 581847, 581848, 581849, 581850, 581851, 581852, 581853, 581854, 581855, 581856, 581857, 581858, 581859, 581860, 581861, 581862, 581863, 581864, 581865, 581866, 581867, 581868, 581869, 581870, 581871, 581872, 581873, 581874, 581875, 581876, 581877, 581878, 581879, 581880, 581881, 581882, 581883, 581884, 581885, 581886, 581887, 581888, 581889, 581890, 581891, 581892, 581893, 581894, 581895, 581896, 581897, 581898, 581899, 581900, 581901, 581902, 581903, 581904, 581905, 581906, 581907, 581908, 581909, 581910, 581911, 581912, 581913, 581914, 581915, 581916, 581917, 581918, 581919, 581920, 581921, 581922, 581923, 581924, 581925, 581926, 581927, 581928, 581929, 581930, 581931, 581932, 581933, 581934, 581935, 581936, 581937, 581938, 581939, 581940, 581941, 581942, 581943, 581944, 581945, 581946, 581947, 581948, 581949, 581950, 581951, 581952, 581953, 581954, 581955, 581956, 581957, 581958, 581959, 581960, 581961, 581962, 581963, 581964, 581965, 581966, 581967, 581968, 581969, 581970, 581971, 581972, 581973, 581974, 581975, 581976, 581977, 581978, 581979, 581981, 581982, 581983, 581984, 581985, 581986, 581987, 581988, 581989, 581990, 581991, 581992, 581993, 581994, 581995, 581996, 581997, 581998, 581999, 582000, 582001, 582002, 582003, 582004, 582005, 582006, 582007, 582008, 582009, 582010, 582011, 582012, 582013, 582014, 582015, 582016, 582017, 582018, 582019, 582020, 582021, 582022, 582023, 582024, 582025, 582026, 582027, 582028, 582029, 582030, 582031, 582032, 582033, 582034, 582035, 582036, 582037, 582038, 582039, 582040, 582041, 582042, 582043, 582044, 582045, 582046, 582047, 582048, 582049, 582050, 582051, 582052, 582053, 582054, 582055, 582056, 582057, 582058, 582059, 582060, 582061, 582062, 582063, 582064, 582065, 582066, 582067, 582068, 582069, 582070, 582071, 582072, 582073, 582074, 582075, 582076, 582077, 582078, 582079, 582080, 582081, 582082, 582083, 582084, 582085, 582086, 582087, 582088, 582089, 582090, 582091, 582092, 582093, 582094, 582095, 582096, 582097, 582098, 582099, 582100, 582101, 582102, 582103, 582104, 582105, 582106, 582107, 582108, 582109, 582110, 582111, 582112, 582113, 582114, 582115, 582116, 582117, 582118, 582119, 582120, 582121, 582122, 582123, 582124, 582125, 582126, 582127, 582128, 582129, 582130, 582131, 582132, 582133, 582134, 582135, 582136, 582137, 582138, 582139, 582140, 582141, 582142, 582143, 582144, 582145, 582146, 582147, 582148, 582149, 582150, 582151, 582152, 582153, 582154, 582155, 582156, 582157, 582158, 582159, 582160, 582161, 582162, 582163, 582164, 582165, 582166, 582167, 582168, 582169, 582170, 582171, 582172, 582173, 582174, 582175, 582176, 582177, 582178, 582179, 582180, 582181, 582182, 582183, 582184, 582185, 582186, 582187, 582188, 582189, 582190, 582191, 582192, 582193, 582194, 582195, 582196, 582197, 582198, 582199, 582200, 582201, 582202, 582203, 582204, 582205, 582206, 582207, 582208, 582209, 582210, 582211, 582212, 582213, 582214, 582215, 582216, 582217, 582218, 582219, 582220, 582221, 582222, 582223, 582224, 582225, 582226, 582227, 582228, 582229, 582230, 582231, 582232, 672256, 695231, 695232, 695233, 695234, 695235, 695236, 695237, 695238, 695239, 695240, 695241, 695242, 695243, 695244, 695245, 695246,	

Gold Projects	Tenement Number/Claim ID	Beneficial Percentage Interest
	695247, 695248, 695249, 695250, 695251, 695252, 695253, 695254, 695255, 695256, 695257, 695258, 695259, 695260, 695261, 695262, 695263, 695264, 695265, 695266, 695267, 695268, 695269, 695270, 695271, 695272, 695273, 695274, 695275, 695276, 695277, 695257, 695265, 695276, 695278, 695279, 695280, 695281, 695282, 695283, 695284, 695285, 695286, 695287, 695288, 695289, 695290, 695291, 695292, 695293, 695294, 695295, 695296, 695297, 695298, 695299, 695300, 695301, 695302, 695303, 695304, 695305, 695306, 695307, 695308, 695309, 695310, 695311, 695312, 695313, 695314, 695315, 695316, 695317, 695318, 695319, 695320, 695321, 695322, 695323, 695324, 695325, 695358, 695367, 695372, 723858, 723859, 723860, 723861, 723862, 723863, 723864.	
Pickle Lake – Jean Lake	574692, 574693, 574694, 574695, 574696, 574697, 574698, 574699, 574700, 574701, 574702, 574703, 574704, 574705, 574706, 574707, 574708, 574709, 574710, 574711, 574712, 574713, 574714, 574715, 574716, 574717, 574718, 574719, 574720, 574721, 574730, 574734, 574735, 574736, 574737, 574738, 574739, 574740, 574741, 574792, 574793, 574794, 574795, 574796, 574797, 574798, 574799, 574800, 574801, 574802, 574803, 574804, 574805, 574806, 574807, 574808, 574809, 574810, 574811, 574812, 574813, 574814, 574815, 574816, 574817, 574818, 574819, 574820, 574821, 574822, 574823, 574824, 574825, 574826, 574827, 574828, 574829, 574830, 574831, 574832, 574833, 574834, 574835, 574836, 574837, 574838, 574839, 574840, 574841, 574864, 574865, 574866, 574867, 574868, 574869, 574870.	100%
Pickle Lake – Kasagiminnis	107775, 110169, 122181, 122182, 122183, 122898, 122899, 124715, 124717, 133631, 136219, 136220, 136221, 141049, 142242, 181427, 186270, 187592, 188198, 198429, 199793, 200883, 236849, 254414, 265109, 266397, 281542, 282778, 289590, 290904, 290905, 301653, 310309, 310310, 310311, 310962, 319583, 340456, 341762, 341763, 713443, 803062, 809113, 848611	100%
Pickle Lake – Kasagiminnis North	614233, 614234, 614235, 614236, 614237, 614238, 614239, 614240, 614241, 614242, 614243, 614244, 614245, 614246, 614247, 614248, 614249, 614250, 614251, 614252, 614253, 614254, 614255, 614256, 614257, 614258, 614259, 614260, 614261, 614262, 614263, 614264, 614265, 614266, 614267, 614268, 614269, 614270, 614271, 614272, 614273, 614274, 614275, 614276, 614277, 614278, 614279, 614280, 614281, 614282, 614283, 614284, 614285, 614286, 614287, 614288, 614289, 614290, 614291, 614292, 614293, 614294, 614295, 614296, 614297, 614298, 614299, 614300, 614301, 614302, 614303, 614304, 614305, 614306, 614307, 614308, 614309, 614310, 614311, 614312, 614313, 614314, 614315, 614316, 614317, 614318, 614319, 614320, 614321, 614322, 614323, 614324, 614325, 614326, 614327, 614328, 614329, 614330, 614331, 614332, 614333, 614334, 614335, 614336, 614337, 614338, 614339, 614340, 614341, 614342, 614343, 614344, 614345, 614346, 614347, 614348, 614349, 614350, 614351, 614352, 614353, 614354, 614355, 614356, 614357, 614358, 614359, 614360, 614361, 614362, 614363, 614364, 614365, 614366, 614367, 614368, 614369, 614370, 614371, 614372, 614373, 614374, 614375, 614376, 614377, 614378, 614379, 614380, 614381, 614382, 614383, 614384, 614385, 614386, 614387, 614388, 614389, 614390, 614391, 614392, 614393, 614394, 614395, 614396, 614397, 614398, 614399, 614400, 614401, 614402, 614403, 614404, 614405, 614406, 614407, 614408, 614409, 614410, 614411, 614412, 614413, 614414, 614415, 614416, 614417, 614418, 614419, 614420, 614421, 614422, 614423, 614424, 614425, 614426, 614427, 614428, 614429, 614430, 614431, 614432, 614433, 614434, 614435, 614436, 614437, 614438, 614439, 614440, 614441, 614442, 614443, 614444, 614445, 614446, 614447, 614448, 614449, 614450, 614451, 614452, 614453, 614454, 614455, 614456, 614457, 614458, 614459, 614460, 614461, 614462, 614463, 614464, 614465, 614466,	100%

Gold Projects	Tenement Number/Claim ID	Beneficial Percentage Interest
	614467, 614468, 614469, 614470, 614471, 614472, 614473, 614474, 614475, 614476, 614477, 614478, 614479, 614480, 614481, 614482, 614483, 614484, 614485, 614486, 614487, 614488, 614489, 614490, 614491, 614492, 614493, 614494, 614495, 614496, 614497, 614498, 614499, 614500, 614501, 614502, 614503, 614504, 614505, 614506, 614507, 614508, 614509, 614510, 614511, 614512, 614513, 614514, 614515, 614516, 614517, 614518, 614519, 614520, 614521, 614522, 614523, 614524, 614525, 614526, 614527, 614528, 614529, 614530, 614531, 614532, 614533, 614534, 614535, 614536, 614537, 614538, 614539, 614540, 614541, 614542, 614543, 614544, 614545, 614546, 614547, 614548, 614549, 614550, 614551, 614552, 614553, 614554, 614555, 614556, 614557, 614558, 614559, 614560, 614561, 614562, 614563, 614564, 614565, 614566, 614567, 614568, 614569, 614570, 614571, 614572, 614573, 614574, 614575, 614576, 614577, 614578, 614579, 614580, 614581, 614582, 614583, 614584, 614585, 614586, 614587, 614588, 614589, 614590, 614591, 614592, 614593, 614594, 614595, 614596, 614597, 614598, 614599, 614600, 614601, 614602, 614603, 614604, 614605, 614606, 614607, 614608, 614609, 614610, 742484, 742485, 742486, 742487, 742488, 742489, 742490, 742491, 742492, 742493, 742493, 742494, 742495, 742496, 742497, 742498.	
Pickle Lake – Kawashe Lake	574871, 574872, 574873, 574874, 574875, 574876, 574877, 574878, 574879, 574880, 574881, 574882, 574883, 574884, 574885, 74886, 574887, 574888, 574889, 574890, 574891, 574892, 574893, 574894, 574895, 574896, 574897, 574898, 574899, 574900, 574901, 574902, 574903, 574904, 574905, 574906, 574907, 574908, 574909, 574910, 574911, 574912, 574913, 574914, 574915, 574916, 574917, 574918, 574919, 574920, 574921, 574922, 574923, 574924, 574925, 574926, 574927, 574928, 574929, 574930, 574931, 574932, 574933, 574934, 574935, 574936, 574937, 574938, 574939, 574940, 574941, 574942, 574943, 574944, 574945, 574946, 574947, 574948, 574949, 574950, 574951, 574952, 574953, 574954, 574955, 574956, 574957, 574958, 574959, 574960, 574961, 574962, 574963, 574964, 574965, 574966, 574967, 574968, 574969, 574970, 574971, 574972, 574973, 574974, 574975, 574976, 574977, 574978, 574979, 574980, 574981, 574982, 574983, 574984, 574985, 574986, 574987, 574988, 574989, 574990, 574991, 574992, 574993, 574994, 574995, 574996, 574997, 574998, 574999, 575000, 575001, 575002, 575003, 575004, 575005, 575006, 575007, 575008, 575009, 575010, 575011, 575012, 575013, 575014, 575015, 575016, 575017, 575018, 575019, 575020, 575021, 575022, 575023, 575024, 575025, 575026, 575027, 575028, 575029, 575030, 575031, 575032, 575033, 575034, 575035, 575036, 575037, 575038, 575039, 575040, 575041, 575042, 575043, 575044, 575045, 575046, 575047, 575048, 575049, 575050, 575051, 575052, 575053, 575054, 575055, 575056, 575057, 575058, 575059, 575060, 575061, 575062, 575063, 575064, 575065, 575066, 575067, 575068, 575069, 575070, 575071, 575072, 575073, 575074, 575075, 575076, 575077, 575078, 575079, 575080, 575081, 575082, 575083, 575084, 575085, 575086, 575087, 575088, 575089, 575090, 575091, 575092, 575093, 575094, 575095, 575096, 575097, 575098, 575099, 575100, 575101, 575102, 575103, 575104, 575105, 575106, 575107, 575108, 575109, 575110, 575111, 575112, 575113, 575114, 575115, 575116, 575117, 575118, 575119, 575120, 575121, 575122, 575123, 575124, 575125, 575126, 575127, 575128, 575129, 575130, 575131, 575132, 575133, 575134, 575135, 575136, 575137, 575138, 575139, 575140, 575141, 575142, 575143, 575144, 575145, 575146, 575147, 575148, 575149, 575150, 575151, 575152, 575153, 575154, 575155, 575156, 575157, 575158, 575159, 575160, 575161, 575162, 575163, 575164, 575165, 575166, 575167, 575168, 575169, 575170, 575171, 575172, 575173, 575174, 575175, 575176, 575177, 575178, 575179, 575180, 575181, 575182, 575183, 575184, 575185, 575186,	100%

Gold Projects	Tenement Number/Claim ID	Beneficial Percentage Interest
	575187, 575188, 575189, 575190, 575191, 575192, 575193, 575194, 575195, 575196, 575197, 575198, 719921.	
Pickle Lake – Kawashe Lake North	625482, 625483, 625484, 625485, 625486, 625487, 625488, 625489, 625490, 625491, 625492, 625493, 625494, 625495, 625496, 625497, 625498, 625499, 625500, 625502, 625503, 625504, 625505, 625506, 625507, 625508, 625509, 625510, 625511, 625512, 625513, 625514, 625515, 625516, 625517, 625518, 625519, 625520, 625521, 625522, 625523, 625524, 625525, 625526, 625527, 625528, 625529, 625530, 625531, 625532, 625533, 625534, 625535, 625536, 625537, 625538, 625539, 625540, 625541, 625542, 625543, 625544, 625545, 625546.	100%
Pickle Lake – Keating Lake	574492, 574493, 574494, 574495, 574496, 574497, 574498, 574499, 574500, 574501, 574502, 574503, 574504, 574505, 574506, 574507, 574508, 574509, 574510, 574511, 574512, 574513, 574514, 574515, 574516, 574517, 574518, 574519, 574520, 574521, 574522, 574523, 574524, 574525, 574526, 574527, 574528, 574529, 574530, 574531, 574532, 574533, 574534, 574535, 574536, 574537, 574538, 574539, 574540, 574541, 574542, 574543, 574544, 574545, 574546, 574547, 574548, 574549, 574550, 574551, 574552, 574553, 574554, 574555, 574556, 574557, 574558, 574559, 574560, 574561, 574562, 574563, 574564, 574565, 574566, 574567, 574568, 574569, 574570, 574571, 574572, 574573, 574574, 574575, 574576, 574577, 574578, 574579, 574580, 574581, 574582, 574583, 574584, 574585, 574586, 574587, 574588, 574589, 574590, 574591, 574722, 574723, 574724, 574725, 574726, 574727, 574728, 574729, 574731, 574732, 574733, 579929, 579930, 579931, 579932, 579933, 579934, 579935, 579936, 579937, 579938, 579939, 579940, 579941, 579942, 579943, 579944, 579945, 579946, 579947, 579948, 579949, 579950, 579951, 579952, 579953, 579954, 579955, 579956, 579957, 579958, 579959, 579960, 579961, 579962, 579963, 579964, 579965, 579966, 579967, 579968, 579969, 579970, 579971, 579972, 579973, 579974, 579975, 579976, 579977, 579978.	100%
Pickle Lake – Meen Lake	579775, 579776, 579777, 579778, 579779, 579780, 579781, 579782, 579783, 579784, 579785, 579786, 579787, 579788, 579789, 579790, 579791, 579792, 579793, 579794, 579795, 579796, 579797, 579798, 579799, 579800, 579801, 579802, 579803, 579804, 579805, 579806, 579807, 579808, 579809, 579810, 579811, 579812, 579813, 579814, 579815, 579816, 579817, 579818, 579819, 579820, 579821, 579822, 579823, 579824, 579825, 579826, 579827, 579828, 579829, 579830, 579831, 579832, 579833, 579834, 579835, 579836, 579837, 579838, 579839, 579840, 579841, 579842, 579843, 579844, 579845, 579846, 579847, 579848, 579849, 579850, 579851, 579852, 579853, 579854, 579855, 579856, 579857, 579858, 579859, 579860, 579861, 579862, 579863, 579864, 579865, 579866, 579867, 579868, 579869, 579870, 579871, 579872, 579873, 579874, 579875, 579876, 579877, 579878, 579879, 579880, 579881, 579882, 579883, 579884, 579885, 579886, 579887, 579888, 579889, 579890, 579891, 579892, 579893, 579894, 579895, 579896, 579897, 579898, 579899, 579900, 579901, 579902, 579903, 579904, 579905, 579906, 579907, 579908, 579909, 579910, 579911, 579912, 579913, 579914, 579915, 579916, 579917, 579918, 579919, 579920, 579921, 579922, 579923, 579924, 579925, 579926, 579927, 579928, 695369, 695683, 695688, 706126, 706127, 706128, 706129, 706130, 706131, 706132, 706133, 706134, 706135, 706136, 706137, 706138, 706139, 706140, 706141, 706142, 706143, 706144, 706145, 706146, 706149, 706150, 706151, 706152, 706153, 706154, 706155, 706156, 706157, 706158, 706159, 706160, 706161, 706162, 706163, 706164, 706165, 706166, 706167, 706168, 706169, 706170, 706171, 706172, 706173, 706174, 706175, 706176, 706177, 706178, 706179, 706180, 706181, 706182, 706183, 706184, 706185, 706186, 706187, 706188, 706189, 706190, 706191, 706192, 706193, 706194, 706195,	100%

Gold Projects	Tenement Number/Claim ID	Beneficial Percentage Interest
	706196, 706197, 706198, 706199, 706200, 706201, 706202, 706203, 706204, 706205, 706206, 706207, 706208, 706209, 706210, 706211, 706212, 706213, 706214, 706215, 706216, 706217, 706218, 706219, 706220, 706221, 706222, 706223, 706224, 706225, 706226, 706227, 706228, 706229, 706230, 706231, 706232, 706233, 706234, 706235, 706236, 706237, 706238, 706239, 706240, 706241, 706242, 706243, 706244, 706245, 706246, 706247, 706248, 706249, 706250, 706251, 706252, 706253, 706254, 706255, 706256, 706257, 706258, 706259, 706260, 706261, 706262, 706263, 706264, 706265, 706266, 706267, 706268, 706269, 706270, 706271, 706272, 706273, 706274, 706275, 706276, 706277, 706278, 706279, 706280, 706281, 706282, 706283, 706284, 706285, 706286, 706287, 706288, 706289, 706290, 706291, 706292, 706293, 706294, 706295, 706296, 706297, 706298, 706299, 706300, 706301, 706302, 706303, 706304, 706305, 706306, 706307, 706308, 706309, 706310, 706311, 706312, 706313, 706314, 706315, 706316, 706317, 706318, 706319, 706320, 706321, 706322, 706323, 706324, 706325, 706326, 706327, 706328, 706329, 706330, 706331, 706332, 706333, 706334, 706335, 706336, 706337, 706338, 706339, 706340, 706341, 706342, 706343, 706344, 706345, 706346, 706347, 706348.	
Pickle Lake - Nabemakoseka	704777, 704778, 704779, 704780, 704781, 704782, 704783, 704784, 704785, 704786, 704787, 704788, 704789, 704790, 704791, 704792, 704793, 704794, 704795, 704796, 704797, 704798, 704799, 704800, 704801, 704802, 704803, 704804, 704805, 704806, 704807, 704808, 704809, 704810, 704811, 704812, 704813, 704814, 704815, 704816, 704817, 704818, 704819, 704820, 704821, 704822, 704823, 704824, 704825, 704826, 704827, 704828, 704829, 704830, 704831, 704832, 704833, 704834, 704835, 704836, 704837, 704838, 704839, 704840, 704841, 704842, 704843, 704844, 704845, 704846, 704847, 704849, 704850, 704851, 704852, 704853, 704854, 704855, 704856, 704857, 704858, 704859, 704860, 704969, 704970, 704971, 704972, 704973, 704974, 704975, 704976, 704977, 704978, 704979, 704980, 704981, 704982, 704983, 704984, 704985, 704986, 704987, 904988, 704989, 704990, 704991, 704992, 704993, 704994, 704995, 704996, 704997, 704998, 704999, 705000, 705001, 705002, 705003, 705004, 705005, 705006, 705007, 705008, 705009, 705010, 705011, 705012, 705013, 705014, 705015, 705016, 705017, 705018, 705019, 705020, 705021, 705022, 705023, 705024, 705025, 705026, 705027, 705028, 705029, 705030, 705031, 705032, 705033, 705034, 705035, 705036, 705037, 705038, 705039, 705040, 705041, 705042, 705043, 705044, 705045, 705046, 705047, 705048, 705049, 705050, 705051, 705052, 705053, 705054, 705055, 705056, 705057, 705058, 705059, 705060, 705061, 705062, 705063, 705064, 705065, 705066, 705067, 705068, 705069, 705070, 705071, 705072, 705073, 705074, 705075, 705076, 705077, 705078, 705079, 705080, 705081, 705082, 705083, 705084, 705085, 705086, 705087, 705088, 705089, 705090, 705091, 705092, 705093, 705094, 705095, 705096, 705097, 705098, 705099, 705100, 705101, 705102, 705103, 705104, 705105, 705106, 705107, 705108, 705109, 705110, 705111, 705112, 705113, 705114, 705115, 705116, 705117, 705118, 706097, 706098, 706099, 706100, 706101, 706102, 706103, 706104, 706105, 706106, 706107, 706108, 706109, 706110, 706111, 706112, 706113, 706114, 706115, 706116, 706117, 706118, 706119, 706120, 706121, 706122, 706123, 706124, 706125, 733146, 733147, 733148, 733149, 795351.	100%
Pickle Lake – New Patricia	131784, 147867, 147868, 147869, 147870, 147871, 159805, 161958, 184465, 193806, 196500, 211821, 214522, 214523, 214524, 240460, 248516, 248517, 248518, 248519, 251221, 260527, 300387, 315009, 315010, 315011, 317709, 329913, 329914, 329915, 329916, 335930, 339299, 500919, 500920, 500921, 500922, 500923, 500924, 500925, 500926, 500927, 500928, 500929, 500930, 500931, 500932, 500933, 500934, 500935, 500936, 500937, 500938, 500939,	100%

Gold Projects	Tenement Number/Claim ID	Beneficial Percentage Interest
	500940, 500941, 500942, 500943, 500944, 500945, 500946, 500947, 500948, 500949, 500950, 500951, 500952, 500953, 500954, 500955, 500956, 500957, 500958, 500959, 500960, 500961, 500962, 500963, 500964, 500965, 500966, 500967, 500968, 500969, 500970, 500971, 500972, 500973, 500974, 500975, 500976, 500977, 500978, 500979, 500980, 500981, 500982, 500983, 500984, 500985, 500986, 500987, 500988, 500989, 500990, 500991, 500992, 500993, 500994, 500995, 500996, 500997, 500998, 500999, 501000, 501001, 501002, 501003, 501004, 501005, 501006, 501007, 501008, 501009, 501010, 501011, 501012, 501013, 501014, 501015, 501016, 501017, 501018, 501142, 501143, 501144, 501145, 501146, 501147, 501148, 501149, 501150, 501151, 501152, 501153, 501154, 501155, 501156, 501157, 501158, 501159, 501160, 501161, 501162, 501163, 501164, 501165, 501166, 501167, 501168, 501169, 501170, 501171, 501172, 501173, 501174, 501175, 501176, 501177, 501178, 501179, 501180, 501181, 501182, 501183, 501184, 501185, 501186, 501187, 501188, 501189, 501190, 501191, 501210, 501211, 501212, 501213, 501214, 501215, 501216, 501217, 501218, 501219, 501220, 501221, 501222, 501223, 501224, 501225, 501226, 501227, 501228, 501229, 501230, 501231, 501232, 501233, 501234, 501235, 501236, 501237, 501238, 501239, 501240, 501241, 501242, 501243, 501244, 501245, 501246, 501247, 501248, 501249, 501250, 501251, 501252, 501253, 501254, 501255, 501256, 501257, 501258, 501259, 501292, 501293, 501294, 501295, 501296, 501297, 501298, 501299, 501300, 501301, 501302, 501303, 501304, 501305, 501306, 501307, 501308, 501309, 501310, 501311, 501312, 501313, 501314, 501315, 501316, 501317, 501318, 501319, 501320, 501321, 501322, 501323, 501324, 501325, 501326, 501327, 501328, 501329, 501330, 501331, 501332, 501333, 501339, 501340, 501341, 501342, 501343, 501344, 501345, 501346, 501347, 501348, 501349, 501350, 501351, 501352, 501353, 501354, 501355, 501356, 501357, 501358, 501359, 501360, 501361, 501362, 501363, 501364, 501365, 501366, 501367, 501368, 501369, 501370, 501371, 501372, 501373, 501374, 501375, 501376, 501377, 501378, 501379, 501380, 501381, 501382, 501383, 501384, 501385, 501386, 501387, 501388, 501527, 501528, 501529, 501530, 501531, 501532, 501533, 501534, 501535, 501536, 501537, 501538, 501539, 501540, 501541, 501542, 501543, 501544, 501545, 501546, 501547, 501548, 501549, 501550, 501551, 501552, 501568, 501569, 501570, 501571, 501572, 501573, 501574, 501575, 501576, 501577, 501578, 501579, 501580, 501581, 501582, 501583, 501584, 501585, 501586, 501587, 501588, 501589, 501590, 501591, 501592, 501593, 501594, 501595, 501596, 501597, 501598, 501599, 501600, 501601, 501602, 501603, 501604, 501605, 501606, 501607, 501608, 501609, 501610, 501611, 501612, 501613, 501614, 501615, 501616, 501617, 501814, 501815, 501816, 501817, 501818, 501819, 501820, 501821, 501822, 501823, 501824, 501825, 501826, 501827, 501828, 501829, 501830, 501831, 501832, 501833, 501834, 501835, 501836, 501837, 501838, 501839, 501840, 501841, 501842, 501843, 501844, 501845, 501846, 501847, 501848, 501849, 501850, 501851, 501852, 501853, 501854, 501855, 501856, 501857, 501858, 501859, 501860, 501861, 501862, 501863, 502011, 502012, 502013, 502014, 502015, 502016, 502017, 502018, 502019, 502020, 502021, 502022, 502023, 502024, 502025, 502026, 502027, 502028, 502029, 502030, 502031, 502032, 502033, 502034, 502035, 502036, 502037, 502038, 502039, 502040, 502041, 502042, 502043, 502044, 502045, 502046, 502047, 502048, 502049, 502050, 502051, 502052, 502053, 502054, 502055, 502056, 502057, 502058, 502059, 502060, 502132, 502133, 502134, 502135, 502136, 502137, 502138, 502139, 502140, 502141, 502142, 502143, 502144, 502145, 502146, 502147, 502148, 502149, 502150, 502151, 502152, 502153, 502154, 502155, 502156, 502157, 502158, 502159, 502160, 502161, 502162, 502163, 502164, 502165, 502166, 502167, 502168, 502169, 502170,	

Gold Projects	Tenement Number/Claim ID	Beneficial Percentage Interest
	502171, 502172, 502173, 502174, 502175, 502176, 502177, 502178, 502179, 502180, 502181, 502227, 502229, 502231, 502232, 502234, 502236, 502238, 502240, 502241, 502243, 502245, 520337, 520338, 520339, 520340, 520935, 520936, 520937, 520938, 520939, 520940, 520941, 520942, 520943, 520944, 520945, 520946, 520947, 520948, 520949, 520950, 520951, 520952, 520953, 520954, 520955, 520956, 520957, 520958, 520959, 520960, 520961, 520962, 520963, 520964, 520965, 520966, 520967, 520968, 520969, 520970, 520971, 520972, 520973, 520974, 520975, 520976, 520977, 520978, 520979, 520980, 520981, 520982, 520983, 520984, 520985, 520986, 520987, 520988, 520989, 520990, 520991, 520992, 520993, 520994, 520995, 520996, 520997, 520998, 520999, 521000, 521001, 521002, 521003, 521004, 521005, 521006, 521007, 521008, 521009, 521010, 521011, 521012, 521013, 521014, 521015, 521016, 521017, 521018, 521019, 521020, 521021, 521022, 521023, 521024, 521025, 521026, 521027, 521028, 521029, 521030, 521031, 521032, 521033, 521034, 521035, 521036, 521037, 521038, 521039, 521040, 521041, 521042, 521043, 521044, 521045, 521046.	
Pickle Lake – Reylea Lake	580157, 580158, 580159, 580160, 580161, 580162, 580163, 580164, 580165, 580166, 580167, 580168, 580169, 580170, 580171, 580172, 580173, 580174, 580175, 580176, 580177, 580178, 580179, 580180, 580181, 580182, 580183, 580184, 580185, 580186, 580187, 580188, 580191, 580192, 580193, 580194, 580195, 580196, 580197, 580198, 580199, 580200, 580201, 580202, 580203, 580204, 580205, 580206, 580207, 580208, 580209, 580210, 580211, 580212, 580213, 580214, 580215, 580216, 580217, 580218, 580219, 580220, 580221, 580222, 580223, 580224, 580225, 580226, 580227, 580228, 580229, 580230, 580231, 580232, 580233, 580234, 580235, 580236, 580237, 580238, 580239, 580240, 580241, 580242, 580243, 580244, 580245, 580246, 580247, 580248, 580249, 580250, 580251, 580252, 580253, 580254, 580255, 580256, 580257, 580258, 580259, 580260, 580261, 580262, 580263, 580264, 580265, 580266, 580267, 580268, 580269, 580270, 580271, 580272, 580273, 580274, 580275, 580276, 580277, 580278, 580279, 580280, 580281, 580282, 580283, 580284, 580285, 580286, 580287, 580288, 580289, 580290, 580291, 580292, 580293, 580294.	100%
Pickle Lake – South Limb	100831, 101396, 101525, 101526, 102692, 102906, 116721, 118004, 118221, 121656, 121657, 125050, 125051, 125052, 125053, 125760, 125761, 125762, 129676, 160810, 164956, 166176, 166304, 166305, 169680, 169681, 173060, 178291, 178314, 178995, 178996, 178997, 179657, 189146, 189147, 189148, 194187, 194210, 194211, 194935, 194936, 194937, 195563, 218371, 219081, 224876, 225586, 225587, 225588, 226523, 226524, 226525, 227088, 231687, 232868, 260845, 262197, 262198, 265588, 266276, 266277, 266278, 268320, 268321, 268322, 273549, 273550, 281607, 282260, 282261, 285637, 285770, 289638, 289639, 293068, 293069, 293146, 293147, 297669, 297670, 321676, 321677, 322315, 328186, 328833, 328834, 328835, 341207, 341208, 535546, 535547, 535548, 535549, 535550, 535551, 535552, 535553, 535554, 535555, 535556, 535557, 551427, 562023, 562024, 562025, 562026.	100%
Pickle Lake – Two Fifty	541335, 541338, 541339, 541340, 541342, 541343, 541347, 541348, 541349, 541351, 541352, 541353, 541354, 541356, 541357, 541362, 541363, 541364, 541365, 541367, 541368, 541369, 541370, 541371, 541372, 541373, 541374, 541376, 541377, 541378, 541379, 541380, 541381, 541382, 541383, 541384, 541385, 541387, 541388, 541389, 541390, 541391, 541392, 541393, 541394, 541395, 541396, 541397, 541398, 541399, 541400, 541401, 562623, 562624, 562625, 562626, 562627, 562628, 562629, 562630, 562631, 562632, 562633, 562634, 562635, 562637, 562638, 562639, 562640, 562641, 562642, 562643, 562644, 562645, 562646, 562647.	100%

Gold Projects	Tenement Number/Claim ID	Beneficial Percentage Interest
Pickle Lake – Two Fifty North	614611, 614612, 614613, 614614, 614615, 614616, 614617, 614618, 614619, 614620, 614621, 614622, 614623, 614624, 614625, 614626, 614627, 614628, 614629, 614630, 614631, 614632, 614633, 614634, 614635, 614636, 614637, 614638, 614639, 614640, 614641, 614642, 614643, 614644, 614645, 614646, 614647, 614648, 614649, 614650, 614651, 614652, 614653, 614654, 614655, 614656, 614657, 614658, 614659, 614660, 614661, 614662, 614663, 614664, 614665, 614666, 614667, 614668, 614669, 614670, 614671, 614672, 614673, 614674, 614675, 614676, 614677, 614678, 614679, 614680, 614681, 614682, 614683, 614684, 614685, 614686, 614687, 614688, 614689, 614690, 614691, 614692, 614693, 614694, 614695, 614696, 614697, 614698, 614699, 614700, 614701, 614702, 614703, 614704, 614705, 614706, 614707, 614708, 614709, 614710, 614711, 614712, 614713, 614714, 614715, 614716, 614717, 614718, 614719, 614720, 614721, 614722, 614723, 614724, 614725, 614726, 614727, 614728, 614729, 614730, 614731, 614732, 614733, 614734, 614735, 614736, 614737, 614738, 614739, 614740, 614741, 614742, 614743, 614744, 614745, 614746, 614747, 614748, 614749, 614750, 614751, 614752, 614753, 614754, 614755, 614756, 614757, 614758, 614759, 614760, 614761, 614762, 614763, 614764, 614765, 614766, 614767, 614768, 614769, 614770, 614771, 614772, 614773, 614774, 614775, 614776, 614777, 614778, 614779, 614780, 614781, 614782, 614783, 614784, 614785, 614786, 614787, 614788, 614789, 614790, 614791, 614792, 614793, 614794, 614795, 614796, 614797, 614798, 614799, 614800, 614801, 614802, 614803, 614804, 614805, 614806, 614807, 614808, 614809, 614810, 614811, 614812, 614813, 614814, 614815, 614816, 614817, 614818, 614819, 614820, 614821, 614822, 614823, 614824, 614825, 614826, 614827, 614828, 614829, 614830, 614831, 614832, 614833, 614834, 614835, 614836, 614837, 614838, 614839, 614840, 614841, 614842, 614843, 614844, 614845, 614846, 614847, 614848, 614849, 614850, 614851, 614852, 614853, 614854, 614855, 614856, 614857, 614858, 614859, 614860, 614861, 614862, 614863, 614864, 614865, 614866, 614867, 614868, 614869, 614870, 614871, 614872, 614873, 614874, 614875, 614876, 614877, 614878, 614879, 614880, 614881, 614882, 614883, 614884, 614885, 614886, 614887, 614888, 614889, 614890, 614891, 614892, 614893, 614894, 614895, 614896, 614897, 614898, 614899, 614900, 614901, 614902, 614903, 614904, 614905, 614906, 614907, 614908, 614909, 614910, 614911, 614912, 614913, 706353, 706354, 706355, 706356, 706357, 706358, 706359, 706365, 706366, 706367, 706368, 706369, 706370, 706371, 706372, 706373, 706374, 706375, 706376, 706377, 706378, 706379, 706380, 706381, 706382, 706383, 706384, 706385, 706386.	100%
Pickle Lake – West Pickle	104760, 104916, 104917, 104918, 104919, 104920, 105656, 105657, 120067, 120068, 126563, 128549, 128550, 138039, 139349, 147534, 147535, 147536, 155122, 155325, 165265, 171104, 171105, 171106, 171107, 173237, 173238, 176769, 184045, 187800, 191356, 191357, 199313, 199314, 199962, 207329, 227360, 227361, 236415, 239988, 248070, 248771, 248772, 250862, 256698, 256699, 266552, 267218, 267219, 273313, 285880, 285881, 287193, 293994, 295326, 295992, 300139, 303169, 306594, 316767, 316768, 320515, 323119, 325091, 325092, 333749, 333750, 333751, 335552, 336241, 336242, 338336, 345540, 345541, 345542, 345543, 541375, 541386.	100%



<b>Graphite Projects</b>	<b>Tenement Number/Claim ID</b>	<b>Beneficial Percentage Interest</b>
Pickle Lake - Manitouwadge	106808, 109041, 110086, 113625, 113626, 118723, 120303, 128662, 131666, 131972, 134369, 148355, 148356, 148357, 151037, 160975, 162102, 162103, 177448, 178748, 178749, 184310, 185993, 185994, 206507, 206508, 213679, 214769, 215274, 216286, 233311, 233312, 233313, 242045, 245488, 246007, 248870, 251308, 251595, 251596, 251597, 251598, 252658, 252659, 254326, 262718, 265818, 265819, 265820, 270688, 270689, 270690, 271714, 271715, 271716, 271717, 271718, 271719, 280111, 280112, 281804, 281805, 289867, 298697, 299651, 300011, 302379, 302380, 302381, 317648, 317649, 317650, 317651, 318725, 329071, 330634, 330635, 332614, 338507, 338508, 338509, 751443, 751444, 751445, 751446, 751447, 751448, 751449, 751450.	100%

2. Mining tenements acquired during the quarter and their location:

<b>Gold Project</b>	<b>Tenement Number</b>	<b>Status</b>	<b>Location</b>	<b>Beneficial Percentage Interest</b>
	Nil			

3. Mining tenements disposed of during the quarter and their location:

<b>Project</b>	<b>Tenement Number</b>	<b>Status</b>	<b>Location</b>	<b>Beneficial Percentage Interest</b>
	Nil			

4. Mining tenements amalgamated during the quarter and their location:

<b>Gold Project</b>	<b>Tenement Number</b>	<b>Status</b>	<b>Location</b>	<b>Beneficial Percentage Interest</b>
	Nil			

## Appendix 5B

### Mining exploration entity or oil and gas exploration entity quarterly cash flow report

Name of entity

Ardiden Limited

ABN

82 110 884 252

Quarter ended ("current quarter")

31 December 2023

Consolidated statement of cash flows	Current quarter \$A'000	Year to date (6 months) \$A'000
<b>1. Cash flows from operating activities</b>		
1.1 Receipts from customers	-	-
1.2 Payments for		
(a) exploration & evaluation	-	-
(b) development	-	-
(c) production	-	-
(d) staff costs	(328)	(558)
(e) administration and corporate costs	(261)	(525)
1.3 Dividends received (see note 3)	-	-
1.4 Interest received	116	228
1.5 Interest and other costs of finance paid	-	-
1.6 Income taxes paid	-	-
1.7 Government grants and tax incentives	-	-
1.8 Other - Tax withholding received	217	217
<b>1.9 Net cash from / (used in) operating activities</b>	<b>(256)</b>	<b>(638)</b>
<b>2. Cash flows from investing activities</b>		
2.1 Payments to acquire or for:		
(a) entities	-	-
(b) tenements	-	-
(c) property, plant and equipment	(35)	(35)
(d) exploration & evaluation	(461)	(1,011)
(e) investments	-	-
(f) other non-current assets	-	-

## Mining exploration entity or oil and gas exploration entity quarterly cash flow report

Consolidated statement of cash flows		Current quarter \$A'000	Year to date (6 months) \$A'000
2.2	Proceeds from the disposal of:		
	(a) entities	-	-
	(b) tenements	-	-
	(c) property, plant and equipment	8	9
	(d) investments	-	-
	(e) other non-current assets	-	-
2.3	Cash flows from loans to other entities	-	-
2.4	Dividends received (see note 3)	-	-
2.5	Other (provide details if material)	-	-
<b>2.6</b>	<b>Net cash from / (used in) investing activities</b>	<b>(488)</b>	<b>(1,037)</b>
<b>3.</b>	<b>Cash flows from financing activities</b>		
3.1	Proceeds from issues of equity securities (excluding convertible debt securities)	-	-
3.2	Proceeds from issue of convertible debt securities	-	-
3.3	Proceeds from exercise of options	-	-
3.4	Transaction costs related to issues of equity securities or convertible debt securities	-	-
3.5	Proceeds from borrowings	-	-
3.6	Repayment of borrowings	-	-
3.7	Transaction costs related to loans and borrowings	-	-
3.8	Dividends paid	-	-
3.9	Other (provide details if material)	-	-
<b>3.10</b>	<b>Net cash from / (used in) financing activities</b>	<b>-</b>	<b>-</b>
<b>4.</b>	<b>Net increase / (decrease) in cash and cash equivalents for the period</b>		
4.1	Cash and cash equivalents at beginning of period	8,424	9,353
4.2	Net cash from / (used in) operating activities (item 1.9 above)	<b>(256)</b>	<b>(638)</b>
4.3	Net cash from / (used in) investing activities (item 2.6 above)	<b>(488)</b>	<b>(1,037)</b>
4.4	Net cash from / (used in) financing activities (item 3.10 above)	-	-
4.5	Effect of movement in exchange rates on cash held	(39)	(37)
<b>4.6</b>	<b>Cash and cash equivalents at end of period</b>	<b>7,641</b>	<b>7,641</b>

<b>5. Reconciliation of cash and cash equivalents</b>	<b>Current quarter \$A'000</b>	<b>Previous quarter \$A'000</b>
at the end of the quarter (as shown in the consolidated statement of cash flows) to the related items in the accounts		
5.1 Bank balances	1,200	792
5.2 Call deposits	6,441	7,632
5.3 Bank overdrafts	-	-
5.4 Other (provide details)	-	-
<b>5.5 Cash and cash equivalents at end of quarter (should equal item 4.6 above)</b>	<b>7,641*</b>	<b>8,424*</b>
<p><b>* In addition to the above cash, there is a further A\$4.52million (Previous Quarter A\$4.85 million) which remains in trust with Canada Revenue Agency, in relation to Canadian withholding tax on the sale of the lithium assets. A\$217k was received from CRA during the Quarter (Refer 1.8) with the remaining decrease due to the exchange loss on the receivable. Ardiden expects the majority of the residual to be remitted back to Ardiden following receipt of a tax clearance certificate from Canada Revenue in the second half of the year.</b></p>		
<b>6. Payments to related parties of the entity and their associates</b>	<b>Current quarter \$A'000</b>	
6.1 Aggregate amount of payments to related parties and their associates included in item 1	139	
6.2 Aggregate amount of payments to related parties and their associates included in item 2	-	
<p><i>Note: if any amounts are shown in items 6.1 or 6.2, your quarterly activity report must include a description of, and an explanation for, such payments.</i></p>		

<b>7. Financing facilities</b>	<b>Total facility amount at quarter end \$A'000</b>	<b>Amount drawn at quarter end \$A'000</b>
<p><i>Note: the term 'facility' includes all forms of financing arrangements available to the entity.</i></p> <p><i>Add notes as necessary for an understanding of the sources of finance available to the entity.</i></p>		
7.1 Loan facilities	N/A	N/A
7.2 Credit standby arrangements	N/A	N/A
7.3 Other (please specify)	N/A	N/A
<b>7.4 Total financing facilities</b>	<b>Nil</b>	<b>Nil</b>
<b>7.5 Unused financing facilities available at quarter end</b>	<b>Nil</b>	
7.6 Include in the box below a description of each facility above, including the lender, interest rate, maturity date and whether it is secured or unsecured. If any additional financing facilities have been entered into or are proposed to be entered into after quarter end, include a note providing details of those facilities as well.		

## Mining exploration entity or oil and gas exploration entity quarterly cash flow report

<b>8. Estimated cash available for future operating activities</b>	<b>\$A'000</b>
8.1 Net cash from / (used in) operating activities (item 1.9)	(256)
8.2 (Payments for exploration & evaluation classified as investing activities) (item 2.1(d))	(461)
8.3 Total relevant outgoings (item 8.1 + item 8.2)	(717)
8.4 Cash and cash equivalents at quarter end (item 4.6)	<b>7,641</b>
8.5 Unused finance facilities available at quarter end (item 7.5)	-
8.6 Total available funding (item 8.4 + item 8.5)	7,641
8.7 <b>Estimated quarters of funding available (item 8.6 divided by item 8.3)</b>	<b>10.66</b>
<i>Note: if the entity has reported positive relevant outgoings (ie a net cash inflow) in item 8.3, answer item 8.7 as "N/A". Otherwise, a figure for the estimated quarters of funding available must be included in item 8.7.</i>	
8.8 If item 8.7 is less than 2 quarters, please provide answers to the following questions:	
8.8.1 Does the entity expect that it will continue to have the current level of net operating cash flows for the time being and, if not, why not?	
8.8.2 Has the entity taken any steps, or does it propose to take any steps, to raise further cash to fund its operations and, if so, what are those steps and how likely does it believe that they will be successful?	
8.8.3 Does the entity expect to be able to continue its operations and to meet its business objectives and, if so, on what basis?	
<i>Note: where item 8.7 is less than 2 quarters, all of questions 8.8.1, 8.8.2 and 8.8.3 above must be answered.</i>	

## Compliance statement

- This statement has been prepared in accordance with accounting standards and policies which comply with Listing Rule 19.11A.
- This statement gives a true and fair view of the matters disclosed.

Date: 30 January 2024

Authorised by: .....By the Board.....  
(Name of body or officer authorising release – see note 4)

### Notes

- This quarterly cash flow report and the accompanying activity report provide a basis for informing the market about the entity's activities for the past quarter, how they have been financed and the effect this has had on its cash position. An entity that wishes to disclose additional information over and above the minimum required under the Listing Rules is encouraged to do so.
- If this quarterly cash flow report has been prepared in accordance with Australian Accounting Standards, the definitions in, and provisions of, *AASB 6: Exploration for and Evaluation of Mineral Resources* and *AASB 107: Statement of Cash Flows* apply to this report. If this quarterly cash flow report has been prepared in accordance with other accounting standards agreed by ASX pursuant to Listing Rule 19.11A, the corresponding equivalent standards apply to this report.
- Dividends received may be classified either as cash flows from operating activities or cash flows from investing activities, depending on the accounting policy of the entity.
- If this report has been authorised for release to the market by your board of directors, you can insert here: "By the board". If it has been authorised for release to the market by a committee of your board of directors, you can insert here: "By the

**Mining exploration entity or oil and gas exploration entity quarterly cash flow report**

---

[name of board committee – eg Audit and Risk Committee]”. If it has been authorised for release to the market by a disclosure committee, you can insert here: “By the Disclosure Committee”.

5. If this report has been authorised for release to the market by your board of directors and you wish to hold yourself out as complying with recommendation 4.2 of the ASX Corporate Governance Council’s *Corporate Governance Principles and Recommendations*, the board should have received a declaration from its CEO and CFO that, in their opinion, the financial records of the entity have been properly maintained, that this report complies with the appropriate accounting standards and gives a true and fair view of the cash flows of the entity, and that their opinion has been formed on the basis of a sound system of risk management and internal control which is operating effectively.