



**HORSESHOE  
METALS  
LIMITED**

ASX ANNOUNCEMENT

31 January 2024

## QUARTERLY ACTIVITIES REPORT

### QUARTER ENDED 31 DECEMBER 2023

Horseshoe Metals Limited (ASX: HOR) (**Horseshoe, HOR or the Company**) is pleased to present its Quarterly Activities Report for the period ending 31 December 2023.

#### **HIGHLIGHTS**

- **Horseshoe pursuing significant early cash flow opportunity from DSO sales of existing high-grade copper stockpiles**
- **Assessment of surface stockpiles and former rehandle areas identifies significant DSO Potential**
- **Surface material assays up to 40.3% copper in chalcocite/digenite**
- **Composite samples collected for customer assessment assay up to 39.0% copper**
- **Samples provided to potential customers that have expressed interest in offtake of DSO material**
- **Appointment of experienced geologist and mining executive Mr Seldon Mart as a Non-Executive Director**
- **Horseshoe remains well positioned to capitalise on improving copper market dynamics over the coming months**

**Commenting on progress made during the December quarter, Director Kate Stoney said:** "Our team continued to advance our flagship Horseshoe Lights Project in WA during the quarter. Our core focus at present remains on accelerating our DSO production strategy which represents a significant early cash flow opportunity from DSO sales of existing high-grade copper stockpiles.

We continue to be encouraged by the improving copper market conditions and we enter 2024 well positioned to increase our operational activities. We look forward to providing regular updates on our progress.

We are also very pleased to welcome Seldon Mart to the Board and his diverse experience and extensive technical skillset will complement the Board's existing expertise. Mr Mart will also provide valuable input as the Company evaluates other strategic copper opportunities in the region."

#### BOARD OF DIRECTORS

Ms Kate Stoney  
*Non-Executive Director,  
Chief Financial Officer &  
Joint Company Secretary*

Mr Seldon Mart  
*Non-Executive Director*

Mr Alan Still  
*Non-Executive Director*

Mr Josh Merriman  
*Joint Company Secretary*

#### HORSESHOE METALS LIMITED

ABN 20 123 133 166  
Level 2, 50 Kings Park Rd  
West Perth WA 6005

T: +61 8 6241 1844  
F: +61 8 6241 1811  
E: info@horseshoemetals.com.au

www.horseshoemetals.com.au

# Exploration & Development Summary

## Western Australia

### Horseshoe Lights Copper-Gold Project, Western Australia

(HOR: 100%)

#### Project Summary

The Horseshoe Lights Copper-Gold Project is the original Cu/Au VMS discovery in the Bryah Basin and is located approx. 60 km west of DeGrussa Copper Mine owned by Sandfire Resources (ASX: SFR).

Past production from Horseshoe Lights includes around **316,000 oz Au & 55 kt Cu metal** in two phases of mining and the deposit contains a current in situ resource **128 kt Cu metal @ 1.0% (0.5% cut-off) and 36,000 oz Au** (refer Table 1).

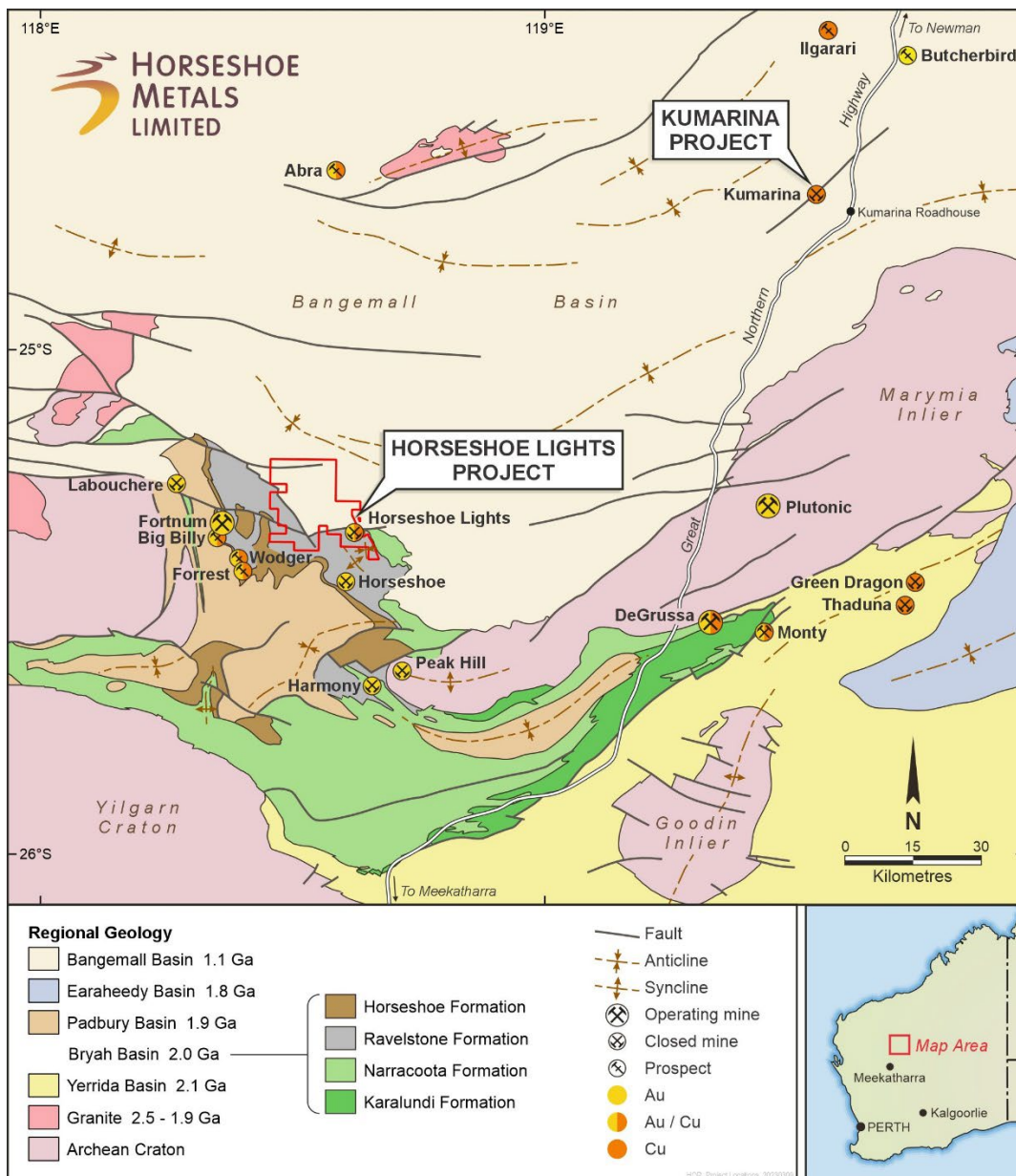


Figure 1: Location of Horseshoe Lights and Kumarina Projects, WA

## **December Quarter Exploration Activity & Future Strategy**

During the quarter, the Company continued to systematically advance the Horseshoe Lights copper-gold system in WA.

A summary of the key activities completed during the quarter is outlined below.

### **High-Grade Surface Material Underpins DSO Strategy**

In late October, the Company provided an update regarding the recent assessment of the high-grade Direct Shipping Ore ('DSO') surface stockpiles at the Horseshoe Lights Copper-Gold Project.

Previous copper mining at the project included early DSO copper production that has left subgrade and rehandle DSO material around the site. Areas identified and assessed as having future DSO potential include, M15, Subgrade and C20 stockpiles along with rehandle and surface pile dumps located on the North Waste dump, Gold tailings and Southern low-grade stockpile (Figure 2 and Images 1).

Surface grab samples have been collected to confirm grade as well as a 27kg composite sample source from various stockpiles around the site. The composite sample was delivered to Nagrom for compositing, crushing and analysis. Sub-samples of this composite have been provided to potential customers for assessment who have expressed strong interest in purchasing the material. This material is identical to the historically produced and sold DSO material.

The grab samples assay up to 40.3% copper and the stockpile composite assays up to 39.0% copper. The DSO material occurs in a wide range of sizes from boulders to fines. The coarse material is easily scavenged utilising loaders and excavators equipped with sieve buckets. The surface materials have previously been broadly grouped as follows (Figure 2):

<b>Copper - Gold</b>	Flotation tailings, Vat 2, M15/C20 Stockpiles and North Dump
<b>Copper</b>	Subgrade, rehandle, Low-grade oxide and sulphide stockpiles
<b>Gold</b>	Gold tailings, leach vats, low grade, rehandle and ROM stockpiles

Results of Phase 1 testing of gold vat, gold re-handle and C20 stockpiles was reported in ASX releases dated 10 September 2021, 26 November 2021 and 18 March 2022 respectively.

Phase 2 drilling completed in May included 70 holes for 778m (refer ASX releases dated 18 March and 19 May 2022) targeting selected stockpiles and dumps as an initial follow-up to historic reconnaissance drilling. The objective was to confirm the existence and style of mineralisation and/or infill drilling completed by the Company (e.g. C20 stockpile).

Further details and technical discussions on the copper, copper-gold and gold material stockpiles can be reviewed in the ASX announcement dated 31 October 2023.



Image 1: Nth of C20 dump- part of composite sample (7,194,388mN 663,343mE)

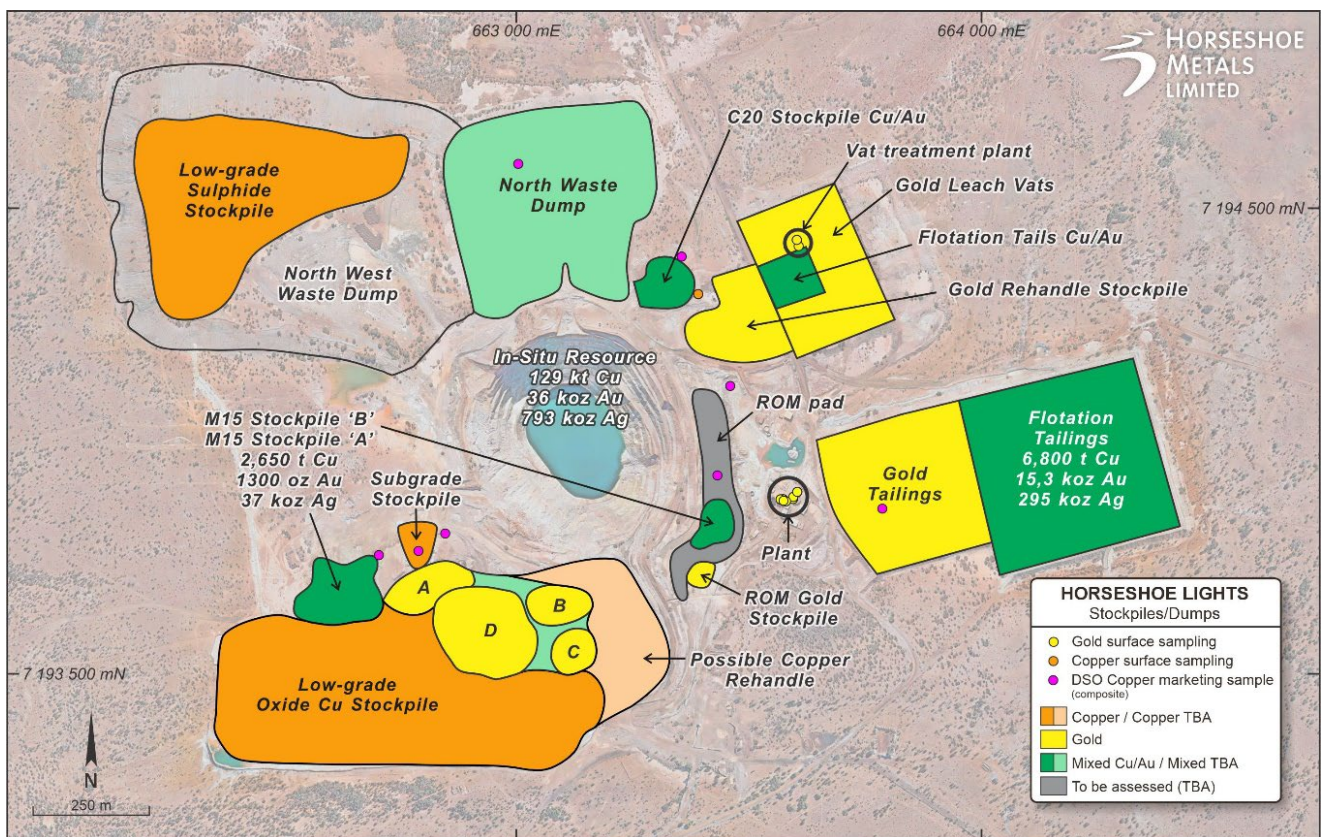


Figure 2: Surface Stockpiles and Dumps showing Sample Locations

### Key Board Appointment to Advance WA Copper Strategy

In December, the Company was pleased to report that Mr Seldon Mart had been appointed as a Non-Executive Director of the Company with immediate effect.

Mr Mart is a highly qualified geologist with over 35 years' experience in resource evaluation, project development and mine management roles across Australia and internationally.

Seldon is a Fellow of the Australasian Institute of Mining and Metallurgists and holds the degree of Master of Science (Geology) from Curtin University. Mr Mart is principal of an international geological and environmental consulting firm and was the founder of MineMap Pty Ltd, a pioneering mine planning and design software company. Seldon was recently engaged as senior consulting hydrogeologist at the Ok Tedi Copper-Gold Mine in New Guinea and has previously held senior management roles at Griffin Mining Ltd, Mt Gibson Iron Ltd and Tanami Gold NL.

Further to the appointment of Mr Mart, the Company also advised that Mr Craig Hall resigned as a Non-Executive Director of the Company. The Board thanks Mr Hall for his valued contributions to the Company since his initial appointment in 2019.

### **Next steps**

The following activities at Horseshoe Lights are planned over the coming months:

- *Continues to advance and review strategic and complementary opportunities in the Bryah Basin*
- *Advancing the DSO strategy including discussion with potential partners*
- *Further studies with respect to the oxide heap leach potential*
- *Additional metallurgical test work on oxide copper stockpiles and targets*
- *Gravity recovery test work on Copper Flotation and CIP tailings*

### **Horseshoe West, Western Australia**

**(HOR: 100%)**

The Horseshoe West tenements are located approximately 1.5 km west of the Company's existing Horseshoe Lights copper-gold deposit and are considered prospective for Horseshoe Lights style Volcanogenic Massive Sulphide (VMS) copper-gold and shear-zone hosted gold mineralisation.

No active field work was undertaken during the December quarter.

### **Kumarina Copper Project, Western Australia**

**(HOR: 100%)**

The Kumarina Project consists of a mining lease and mining lease application covering approximately 3.2 km<sup>2</sup>. The Project is located 95 km north of Sandfire Resources NL's DeGrussa copper-gold mine in the Gascoyne region of Western Australia. The Company has applied for a mining lease (MLA52/1078) to cover the Rinaldi resource, contiguous with M52/27. The Company continues to progress a Project Agreement as part of the application process with the Native Title Party and its lawyers.

No active field work was undertaken during the December quarter.

## South Australia

### Glenloth Gold Project, South Australia

(EL6301 and rights to explore and develop ML5848, ML5849, ML5885 & MPL62)

The Glenloth Project is located in the Central Gawler Craton of South Australia. The project consists of a single exploration licence, EL 6301, which comprises two areas totalling 107 km<sup>2</sup>. The larger eastern block *Glenloth* covers 81 km<sup>2</sup> and includes the Glenloth Goldfield and part of the Harris Greenstone Belt. The smaller western block *Old Well* takes in the northern trend of the 1.0M oz Tunkillia gold deposit located 6 km to the south, under development by Barton Gold Holdings Ltd (ASX:BGD). The Company also holds the rights to explore and develop ML 5848, ML 5849, ML 5885 and MPL 62 within the eastern block of EL 6301.

At Glenloth gold occurrences typically consist of relatively thin (ca. 1 m width), high-grade mineralised quartz veins, hosted by sheared and fractured Archaean to Paleoproterozoic Glenloth Granite, and contacts with dolerite dykes. A shallow Hiltaba Suite batholith has been proposed as the source of mineralisation. Six kilometres south of Old Well, the Tunkillia deposits (Areas 223, 191, 51) are characterised by a large hydrothermal system associated with the Yarlbrinda Shear Zone, which passes into the Old Well tenure.

No active field work was undertaken during the December quarter.

## Corporate

### Listing Rule 5.3.5 disclosures

The amount of payments to related parties and their associates disclosed in section 6.1 of Appendix 5B accompanying this report was approximately \$32,000. This consisted of payments to Directors totalling \$6,000 for directors' fees, superannuation and company secretarial fees, as well as payments to Target Exploration Pty Ltd (an entity of which Ms Kate Stoney is a director) of approximately \$26,000 for exploration management, technical consulting services, and corporate and administrative services.

*The Board of Directors of HOR has authorised this announcement to be given to the ASX.*

**-ENDS-**

## Contacts

For more information, please contact:

### **Ms Kate Stoney**

*Non-Executive Director & Company Secretary*

[info@horseshoemetals.com.au](mailto:info@horseshoemetals.com.au)

## About Horseshoe Metals Limited

Horseshoe Metals Limited (ASX:HOR) is a copper and gold-focused company with a package of tenements covering approximately 500 km<sup>2</sup> in the highly prospective Peak Hill Mineral Field, located north of Meekatharra in Western Australian and mineral interests in South Australia. The Company manages the Horseshoe Lights Project and the Kumarina Project in Western Australia, and the Glenloth Gold Project in South Australia.

### About the Horseshoe Lights Project

The Horseshoe Lights Project includes the historic open pit of the Horseshoe Lights copper-gold mine which operated up until 1994, producing over 300,000 ounces of gold and 54,000 tonnes of contained copper including over 110,000 tonnes of Direct Shipping Ore (DSO) which graded between 20-30% copper.

The Horseshoe Lights ore body is interpreted as a deformed Volcanogenic Hosted Massive Sulphide (VMS) deposit that has undergone supergene alteration to generate the gold-enriched and copper-depleted cap that was the target of initial mining. The deposit is hosted by quartz-sericite and quartz-chlorite schists of the Lower Proterozoic Narracoota Formation.

Past mining was focused on the Main Zone, a series of lensoid ore zones, which passed with depth from a gold-rich oxide zone through zones of high-grade chalcocite mineralisation into massive pyrite-chalcopyrite. To the west and east of the Main Zone, copper mineralisation in the Northwest Stringer Zone and Motters Zone consists of veins and disseminations of chalcopyrite and pyrite and their upper oxide copper extensions. The table below summarises the total Mineral Resources for the Horseshoe Lights Project at the reporting date.

Location	Category	Tonnes (Mt)	Cu (%)	Au (g/t)	Ag (g/t)	Cu metal (tonnes)	Au metal (oz)	Ag metal (k oz)	
<b>In-situ Deposit</b> (0.5% Cu cut-off grade)	<i>Measured</i>	1.73	1.04	0.0	0.5	18,000	1,900	28.8	
	<i>Indicated</i>	2.43	0.95	0.0	0.7	23,200	3,400	52.2	
	<i>Inferred</i>	8.69	1.01	0.1	2.6	87,400	30,700	712.4	
	<b>Total</b>	<b>12.85</b>	<b>1.00</b>	<b>0.1</b>	<b>1.9</b>	<b>128,600</b>	<b>36,000</b>	<b>793.4</b>	
<b>Flotation Tailings</b>	<b>Inferred</b>	<b>1.421</b>	<b>0.48</b>	<b>0.34</b>	<b>6.5</b>	<b>6,800</b>	<b>15,300</b>	<b>294.8</b>	
<b>M15 Stockpiles</b>	<b>Inferred</b>	<b>0.243</b>	<b>1.10</b>	<b>0.17</b>	<b>4.7</b>	<b>2,650</b>	<b>1,300</b>	<b>36.7</b>	
Note: At 0% Cu cut-off grade unless otherwise stated						<b>TOTAL</b>	<b>138,050</b>	<b>52,600</b>	<b>1,124.9</b>

The above Mineral Resource Estimates all meet the reporting requirements of the 2012 Edition of the "Australasian Code for Reporting of Exploration Results, Mineral Resources and Ore Reserves".

### About the Kumarina Project

The copper deposits at the Kumarina Project were discovered in 1913 and worked intermittently until 1973. The workings extend over nearly 5km as a series of pits, shafts and shallow open cuts. At the main Kumarina Copper Mine, the workings are entirely underground with drives from the main shaft extending for some 200 m in the upper levels and for about 100 m in the lower levels at a depth of 49m below surface.

Incomplete records post-1960s make it difficult to estimate the total copper production from the workings. However, indications are that the Kumarina Copper Mine was the second largest producer in the Bangemall Basin group of copper mines. Recorded production to the late 1960s is 481 t of copper ore at a high-grade of 37.0% Cu and 2,340 t at a grade of 17.51% Cu. An initial Mineral Resource Estimate for the Rinaldi deposit was completed by the Company in 2013 (see 30 June 2013 Quarterly Report announced on 31 July 2013). The total Measured, Indicated and Inferred Mineral Resource Estimate at the reporting date is shown in the table below.

**TABLE 2**  
**KUMARINA PROJECT**  
**SUMMARY OF MINERAL RESOURCES**  
**as at 31 December 2023**

<b>Location</b>	<b>Category</b>	<b>Tonnes (t)</b>	<b>Cu (%)</b>	<b>Cu metal (tonnes)</b>
<b>Rinaldi Prospect</b> (0.5% Cu cut-off)	<i>Measured</i>	<i>415,000</i>	<i>1.46</i>	<i>6,100</i>
	<i>Indicated</i>	<i>307,000</i>	<i>1.16</i>	<i>3,500</i>
	<i>Inferred</i>	<i>114,000</i>	<i>0.9</i>	<i>1,000</i>
	<b>Total</b>	<b>835,000</b>	<b>1.3</b>	<b>10,600</b>

The Mineral Resource Estimate meets the reporting requirements of the 2012 Edition of the "Australasian Code for Reporting of Exploration Results, Mineral Resources and Ore Reserve

**Forward Looking Statements**

Horseshoe Metals Limited has prepared this announcement based on information available to it. No representation or warranty, express or implied, is made as to the fairness, accuracy, completeness or correctness of the information, opinions and conclusions contained in this announcement. To the maximum extent permitted by law, none of Horseshoe Metals Limited, its directors, employees or agents, advisers, nor any other person accepts any liability, including, without limitation, any liability arising from fault or negligence on the part of any of them or any other person, for any loss arising from the use of this announcement or its contents or otherwise arising in connection with it. This announcement is not an offer, invitation, solicitation or other recommendation with respect to the subscription for, purchase or sale of any security, and neither this announcement nor anything in it shall form the basis of any contract or commitment whatsoever. This announcement may contain forward-looking statements that are subject to risk factors associated with gold exploration, mining and production businesses. It is believed that the expectations reflected in these statements are reasonable but they may be affected by a variety of variables and changes in underlying assumptions which could cause actual results or trends to differ materially, including but not limited to price fluctuations, actual demand, currency fluctuations, drilling and production results, reserve estimations, loss of market, industry competition, environmental risks, physical risks, legislative, fiscal and regulatory changes, economic and financial market conditions in various countries and regions, political risks, project delay or advancement, approvals and cost estimates.

**Competent Persons Statement**

The information in this report that relates to the Exploration Results and Mineral Resources at the Horseshoe Lights and Kumarina Projects is based on information reviewed by Mr Michael Fotios, who is a member of the Australian Institute of Mining and Metallurgy. Mr Fotios is a contractor to Horseshoe Metals Limited and has sufficient experience which is relevant to the style of mineralisation and types of deposit under consideration and to the activity he is undertaking to qualify as Competent Persons as defined in the 2012 Edition of the 'Australasian Code for Reporting of Exploration Results, Mineral Resources and Ore Reserves (JORC Code 2012)'. Mr Fotios consents to the inclusion of the data in the form and context in which it appears.

The information in this report that relates to the Horseshoe Lights Project In-situ Mineral Resources is based on information originally compiled by Mr Dmitry Pertel, an employee of CSA Global Pty Ltd, and reviewed by Mr Fotios. This information was originally issued in the Company's ASX announcement "40% increase in Copper Resource at Horseshoe Lights Copper/Gold Project", released to the ASX on 5 June 2013, and first disclosed under the JORC Code 2004. This information was subsequently disclosed under the JORC Code 2012 in the Company's ASX release "Quarterly Report Period Ended 30 June 2013", released on 31 July 2013. The Company confirms that it is not aware of any new information or data that materially affects the information included in the original market announcements. The Company confirms that the form and context in which the findings are presented have not materially modified from the original market announcements.

The information in this report that relates to the Horseshoe Lights Project surface stockpile Mineral Resources is based on information compiled by a previous employee of Horseshoe Metals Limited and reviewed by Mr Fotios. The information was previously issued in announcements released to the ASX on 26 February 2015 and 9 March 2015. The Company confirms that it is not aware of any new information or data that materially affects the information included in the original market announcements. The Company confirms that the form and context in which the findings are presented have not materially modified from the original market announcements.

The information in this report that relates to the Kumarina Project (Rinaldi Prospect) Mineral Resources is based on information compiled by or under the supervision of Mr Robert Spiers, an independent consultant to Horseshoe Metals Limited and a then full-time employee and Director of H&S Consultants Pty Ltd (formerly Hellman & Schofield Pty Ltd), and reviewed by Mr Fotios. The information was originally issued in the Company's ASX announcement "Horseshoe releases Maiden Mineral Resource Estimate for Kumarina", released to the ASX on 4 March 2013, and first disclosed under the JORC Code 2004. This information was subsequently disclosed under the JORC Code 2012 in the Company's ASX release "Quarterly Report Period Ended 30 June 2013", released on 31 July 2013. The Company confirms that it is not aware of any new information or data that materially affects the information included in the original market announcements. The Company confirms that the form and context in which the findings are presented have not materially modified from the original market announcements.



## Appendix 1: Tenement Schedule (ASX Listing Rule 5.3.3)

SUMMARY OF MINING TENEMENT INTERESTS					
AS AT					
31 December 2023					
Location	Tenement No.	Interest At Beginning Of Quarter (%)	Interests relinquished, reduced or lapsed (%)	Interests acquired or increased (%)	Interest At End Of Quarter (%)
Horseshoe Lights, WA	M52/743	100% <sup>1</sup>	-	-	100% <sup>1</sup>
Horseshoe Lights, WA	L52/42	100%	-	-	100%
Horseshoe Lights, WA	L52/43	100%	-	-	100%
Horseshoe Lights, WA	L52/44	100%	-	-	100%
Horseshoe Lights, WA	L52/45	100%	-	-	100%
Horseshoe Lights, WA	L52/66	100%	-	-	100%
Horseshoe Lights, WA	P52/1542	100%	-	-	100%
Horseshoe Lights, WA	P52/1543	100%	-	-	100%
Horseshoe Lights, WA	P52/1544	100%	-	-	100%
Horseshoe Lights, WA	P52/1545	100%	-	-	100%
Horseshoe Lights, WA	P52/1546	100%	-	-	100%
Horseshoe Lights, WA	P52/1547	100%	-	-	100%
Horseshoe Lights, WA	P52/1548	100%	-	-	100%
Horseshoe Lights, WA	P52/1549	100%	-	-	100%
Horseshoe Lights, WA	P52/1550	100%	-	-	100%
Horseshoe Lights, WA	E52/3759	100%	-	-	100%
Horseshoe West, WA	E52/3906	100%	-	-	100%
Horseshoe West, WA	E52/3908	100%	-	-	100%
Horseshoe West, WA	E52/3909	100%	-	-	100%
Horseshoe West, WA	E52/3939	100%	-	-	100%
Horseshoe West, WA	E52/4229	100%	-	-	100%
Horseshoe West, WA	E52/4230	100%	-	-	100%
Kumarina, WA	M52/27	100%	-	-	100%
Kumarina, WA	MLA52/1078	0% <sup>2</sup>	-	-	0% <sup>2</sup>
Glenloth, SA	EL6301	100%	-	-	100%

Notes:

1. Vox Royalty Australia Pty Ltd, a wholly owned subsidiary of Vox Royalty Corporation (TSE:VOXR), retains a 3% net smelter return royalty in respect to all production derived from M52/743.
2. The Company has applied for a Mining Lease to cover the Rinaldi resource within E52/1998, contiguous with M52/27.

## Appendix 5B

### Mining exploration entity or oil and gas exploration entity quarterly cash flow report

Name of entity

Horseshoe Metals Limited

ABN

20 123 133 166

Quarter ended ("current quarter")

31 December 2023

Consolidated statement of cash flows	Current quarter \$A'000	Year to date (12 months) \$A'000
<b>1. Cash flows from operating activities</b>		
1.1 Receipts from customers	-	-
1.2 Payments for		
(a) exploration & evaluation	(14)	(1,300)
(b) development	-	-
(c) production	-	-
(d) staff costs	(18)	(48)
(e) administration and corporate costs	(30)	(522)
1.3 Dividends received (see note 3)	-	-
1.4 Interest received	-	4
1.5 Interest and other costs of finance paid	-	-
1.6 Income taxes paid	-	-
1.7 Government grants and tax incentives	-	-
1.8 Other (provide details if material)	-	-
<b>1.9 Net cash from / (used in) operating activities</b>	<b>(62)</b>	<b>(1,866)</b>
<b>2. Cash flows from investing activities</b>		
2.1 Payments to acquire:		
(a) entities	-	-
(b) tenements	-	-
(c) property, plant and equipment	-	-
(d) exploration & evaluation	-	-
(e) investments	-	-
(f) other non-current assets	-	-

<b>Consolidated statement of cash flows</b>	<b>Current quarter \$A'000</b>	<b>Year to date (12 months) \$A'000</b>
2.2 Proceeds from the disposal of:		
(a) entities	-	-
(b) tenements	-	-
(c) property, plant and equipment	-	-
(d) investments	-	-
(e) other non-current assets	-	-
2.3 Cash flows from loans to other entities	-	-
2.4 Dividends received (see note 3)	-	-
2.5 Other (provide details if material)	-	-
<b>2.6 Net cash from / (used in) investing activities</b>	<b>-</b>	<b>-</b>

<b>3. Cash flows from financing activities</b>		
3.1 Proceeds from issues of equity securities (excluding convertible debt securities)	-	2,000
3.2 Proceeds from issue of convertible debt securities	-	-
3.3 Proceeds from exercise of options	-	-
3.4 Transaction costs related to issues of equity securities or convertible debt securities	-	(138)
3.5 Proceeds from borrowings	-	-
3.6 Repayment of borrowings	-	-
3.7 Transaction costs related to loans and borrowings	-	-
3.8 Dividends paid	-	-
3.9 Other (provide details if material)	-	-
<b>3.10 Net cash from / (used in) financing activities</b>	<b>-</b>	<b>1,862</b>

<b>Consolidated statement of cash flows</b>		<b>Current quarter \$A'000</b>	<b>Year to date (12 months) \$A'000</b>
<b>4.</b>	<b>Net increase / (decrease) in cash and cash equivalents for the period</b>		
4.1	Cash and cash equivalents at beginning of period	64	6
4.2	Net cash from / (used in) operating activities (item 1.9 above)	(62)	(1,866)
4.3	Net cash from / (used in) investing activities (item 2.6 above)	-	-
4.4	Net cash from / (used in) financing activities (item 3.10 above)	-	1,862
4.5	Effect of movement in exchange rates on cash held	-	-
<b>4.6</b>	<b>Cash and cash equivalents at end of period</b>	<b>2</b>	<b>2</b>

<b>5. Reconciliation of cash and cash equivalents</b> at the end of the quarter (as shown in the consolidated statement of cash flows) to the related items in the accounts		<b>Current quarter \$A'000</b>	<b>Previous quarter \$A'000</b>
5.1	Bank balances	2	64
5.2	Call deposits	-	-
5.3	Bank overdrafts	-	-
5.4	Other (provide details)	-	-
<b>5.5</b>	<b>Cash and cash equivalents at end of quarter (should equal item 4.6 above)</b>	<b>2</b>	<b>64</b>

<b>6. Payments to related parties of the entity and their associates</b>		<b>Current quarter \$A'000</b>
6.1	Aggregate amount of payments to related parties and their associates included in item 1	32
6.2	Aggregate amount of payments to related parties and their associates included in item 2	-

*Note: if any amounts are shown in items 6.1 or 6.2, your quarterly activity report must include a description of, and an explanation for, such payments.*

Includes payments of \$6,000 made to Directors for directors' fees, superannuation and company secretarial fees, and payments made to Target Exploration Pty Ltd (an entity of which Ms Kate Stoney is a director) totalling \$26,000 for exploration management, technical consulting services, and corporate and administrative services.

## Mining exploration entity or oil and gas exploration entity quarterly cash flow report

<b>7. Financing facilities</b>	<b>Total facility amount at quarter end \$A'000</b>	<b>Amount drawn at quarter end \$A'000</b>
<i>Note: the term "facility" includes all forms of financing arrangements available to the entity. Add notes as necessary for an understanding of the sources of finance available to the entity.</i>		
7.1 Loan facilities	2,000	964
7.2 Credit standby arrangements	-	-
7.3 Other (please specify)	-	-
<b>7.4 Total financing facilities</b>	<b>2,000</b>	<b>964</b>
<b>7.5 Unused financing facilities available at quarter end</b>		<b>1,036</b>
7.6 Include in the box below a description of each facility above, including the lender, interest rate, maturity date and whether it is secured or unsecured. If any additional financing facilities have been entered into or are proposed to be entered into after quarter end, include a note providing details of those facilities as well.		
The Company has an unsecured loan agreement with a syndicate of lenders. The facility limit is \$2,000,000, interest rate 8% p.a.		

<b>8. Estimated cash available for future operating activities</b>	<b>\$A'000</b>
8.1 Net cash from / (used in) operating activities (item 1.9)	(62)
8.2 (Payments for exploration & evaluation classified as investing activities) (item 2.1(d))	-
8.3 Total relevant outgoings (item 8.1 + item 8.2)	(62)
8.4 Cash and cash equivalents at quarter end (item 4.6)	2
8.5 Unused finance facilities available at quarter end (item 7.5)	1,036
8.6 Total available funding (item 8.4 + item 8.5)	1,038
<b>8.7 Estimated quarters of funding available (item 8.6 divided by item 8.3)</b>	<b>17.7</b>
<i>Note: if the entity has reported positive relevant outgoings (ie a net cash inflow) in item 8.3, answer item 8.7 as "N/A". Otherwise, a figure for the estimated quarters of funding available must be included in item 8.7.</i>	
8.8 If item 8.7 is less than 2 quarters, please provide answers to the following questions:	
8.8.1 Does the entity expect that it will continue to have the current level of net operating cash flows for the time being and, if not, why not?	
	N/A
8.8.2 Has the entity taken any steps, or does it propose to take any steps, to raise further cash to fund its operations and, if so, what are those steps and how likely does it believe that they will be successful?	
	N/A

## Mining exploration entity or oil and gas exploration entity quarterly cash flow report

8.8.3 Does the entity expect to be able to continue its operations and to meet its business objectives and, if so, on what basis?

N/A

*Note: where item 8.7 is less than 2 quarters, all of questions 8.8.1, 8.8.2 and 8.8.3 above must be answered.*

## Compliance statement

- 1 This statement has been prepared in accordance with accounting standards and policies which comply with Listing Rule 19.11A.
- 2 This statement gives a true and fair view of the matters disclosed.

Date: 31 January 2024

Authorised by: By the board.  
(Name of body or officer authorising release – see note 4)

## Notes

1. This quarterly cash flow report and the accompanying activity report provide a basis for informing the market about the entity's activities for the past quarter, how they have been financed and the effect this has had on its cash position. An entity that wishes to disclose additional information over and above the minimum required under the Listing Rules is encouraged to do so.
2. If this quarterly cash flow report has been prepared in accordance with Australian Accounting Standards, the definitions in, and provisions of, *AASB 6: Exploration for and Evaluation of Mineral Resources* and *AASB 107: Statement of Cash Flows* apply to this report. If this quarterly cash flow report has been prepared in accordance with other accounting standards agreed by ASX pursuant to Listing Rule 19.11A, the corresponding equivalent standards apply to this report.
3. Dividends received may be classified either as cash flows from operating activities or cash flows from investing activities, depending on the accounting policy of the entity.
4. If this report has been authorised for release to the market by your board of directors, you can insert here: "By the board". If it has been authorised for release to the market by a committee of your board of directors, you can insert here: "By the [name of board committee – eg Audit and Risk Committee]". If it has been authorised for release to the market by a disclosure committee, you can insert here: "By the Disclosure Committee".
5. If this report has been authorised for release to the market by your board of directors and you wish to hold yourself out as complying with recommendation 4.2 of the ASX Corporate Governance Council's *Corporate Governance Principles and Recommendations*, the board should have received a declaration from its CEO and CFO that, in their opinion, the financial records of the entity have been properly maintained, that this report complies with the appropriate accounting standards and gives a true and fair view of the cash flows of the entity, and that their opinion has been formed on the basis of a sound system of risk management and internal control which is operating effectively.