

ASX / MEDIA ANNOUNCEMENT

1 FEBRUARY 2024

MOUNT IDA LITHIUM PROSPECT – PHASE 2 EXPLORATION PROGRAM UPDATE

HIGHLIGHTS

- The Phase 2 Priority 1 drill program has been completed on the two significant north and south well-defined Li-Cs-Rb-Be soils geochemical anomalies that were identified from the soils program.
- A total of 30 RC drill holes were completed for 3,286 metres, 1,609 RC samples have been submitted for assay.
- From the Geochemical Soils Review, further soil sampling was expanded and completed on the existing northern and southern anomalous zones that remained open.
- Extended soil sampling was also completed on the balance of Juno's mining lease tenure on both Mount Ida and Mount Mason in parallel with the drill program.

Juno Minerals Limited (ASX: JNO) ('Juno' or 'the Company') is pleased to announce that Phase 2 drilling program that commenced on December 6 after the ranked priority areas were evaluated on the ground by Juno's consulting senior geologist from BMGS out of Kalgoorlie.

Ground truthing across the anomalous areas revealed several areas of extensive pegmatite swarms.

The initial interpretation of the phase one and phase two sampling alluded to a near north-south trending source. This was confirmed for the Northern Anomaly; multiple steeply dipping and continuous pegmatites up to 400m long and 50m wide were observed hosted within foliated mafic volcanics. Outcropping pegmatites observed across the Southern Anomaly revealed multiple continuous north-west to south-east trending pegmatite dykes.

The original phase two drilling layout was adjusted to effectively evaluate initially with shallow drilling, the potential for subsurface LCT development. The revised and completed Phase 2 drill positions for the Northern and Southern anomalies are shown in Figures 2 and 3 respectively.

Drilling was completed on the Priority 1 areas, a total of 30 RC drill holes, 16 holes on the northern and 14 on the southern anomaly for a total of 3,286 metres, an average drill hole length of 109 metres. A total of 1,609 RC samples have been submitted for assay with results expected mid – February.

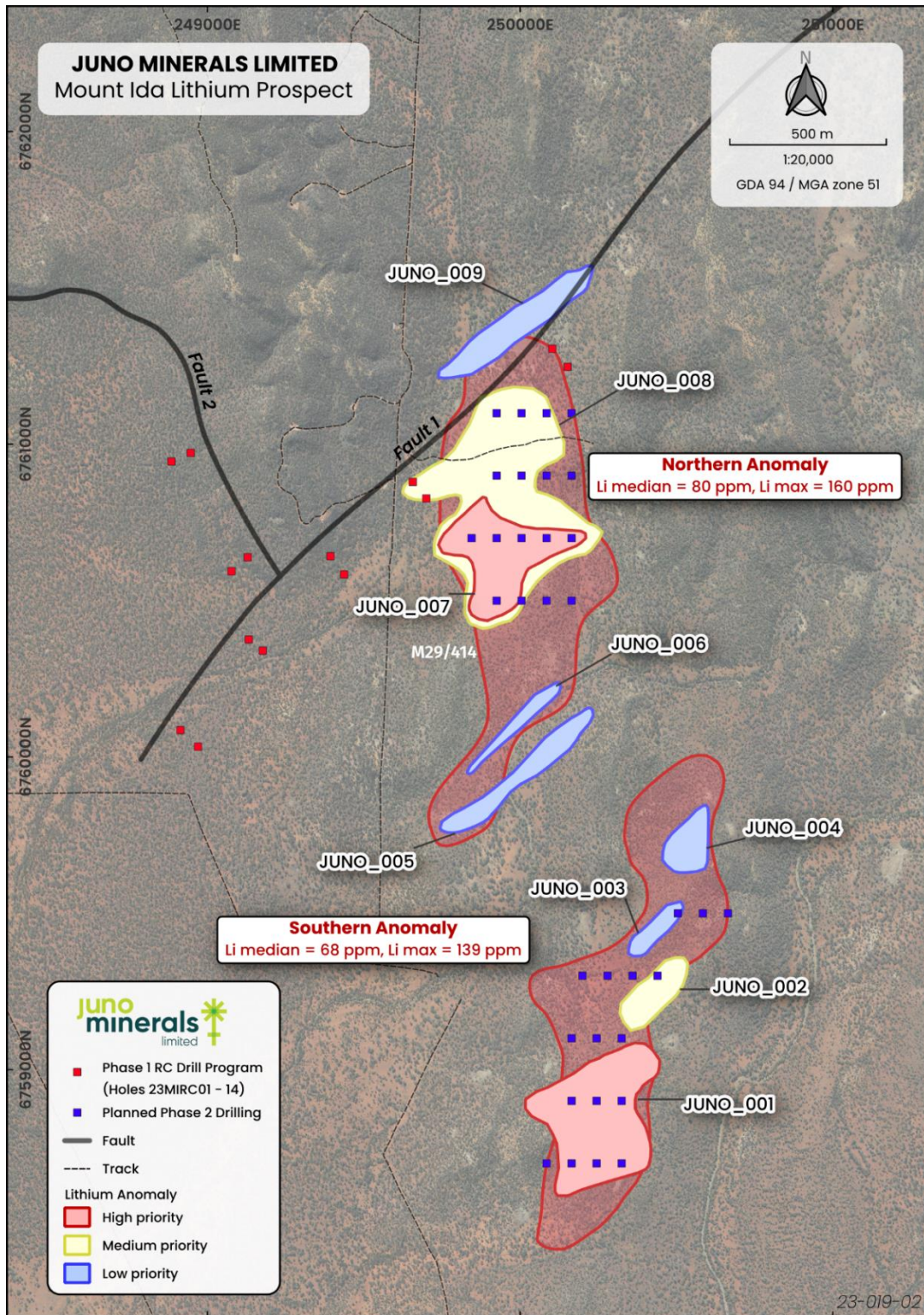


Figure 1: Geochem priority soil anomalies with initial planned Phase 2 drilling



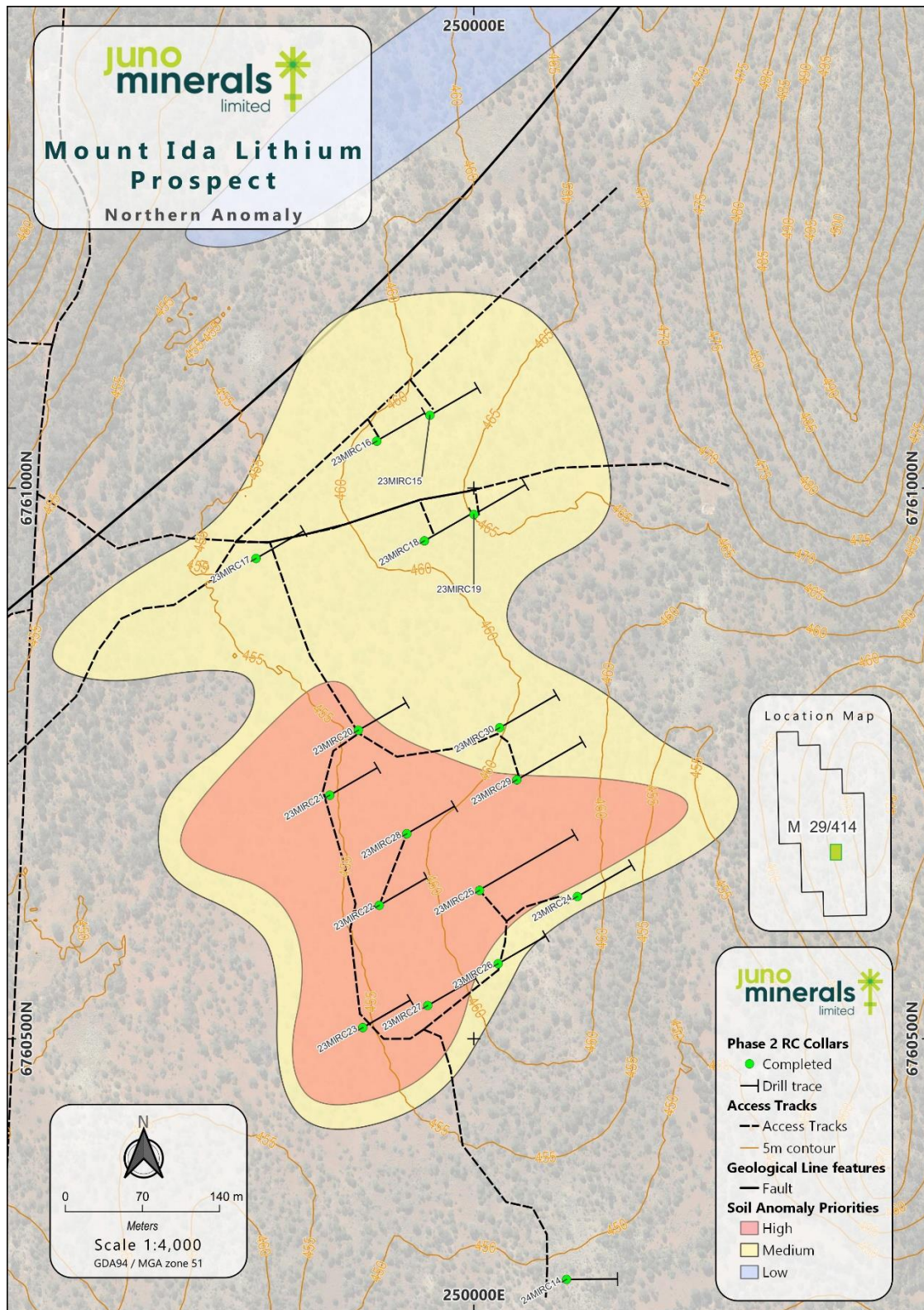


Figure 2: Northern Anomaly completed drill positions on mapped pegmatites



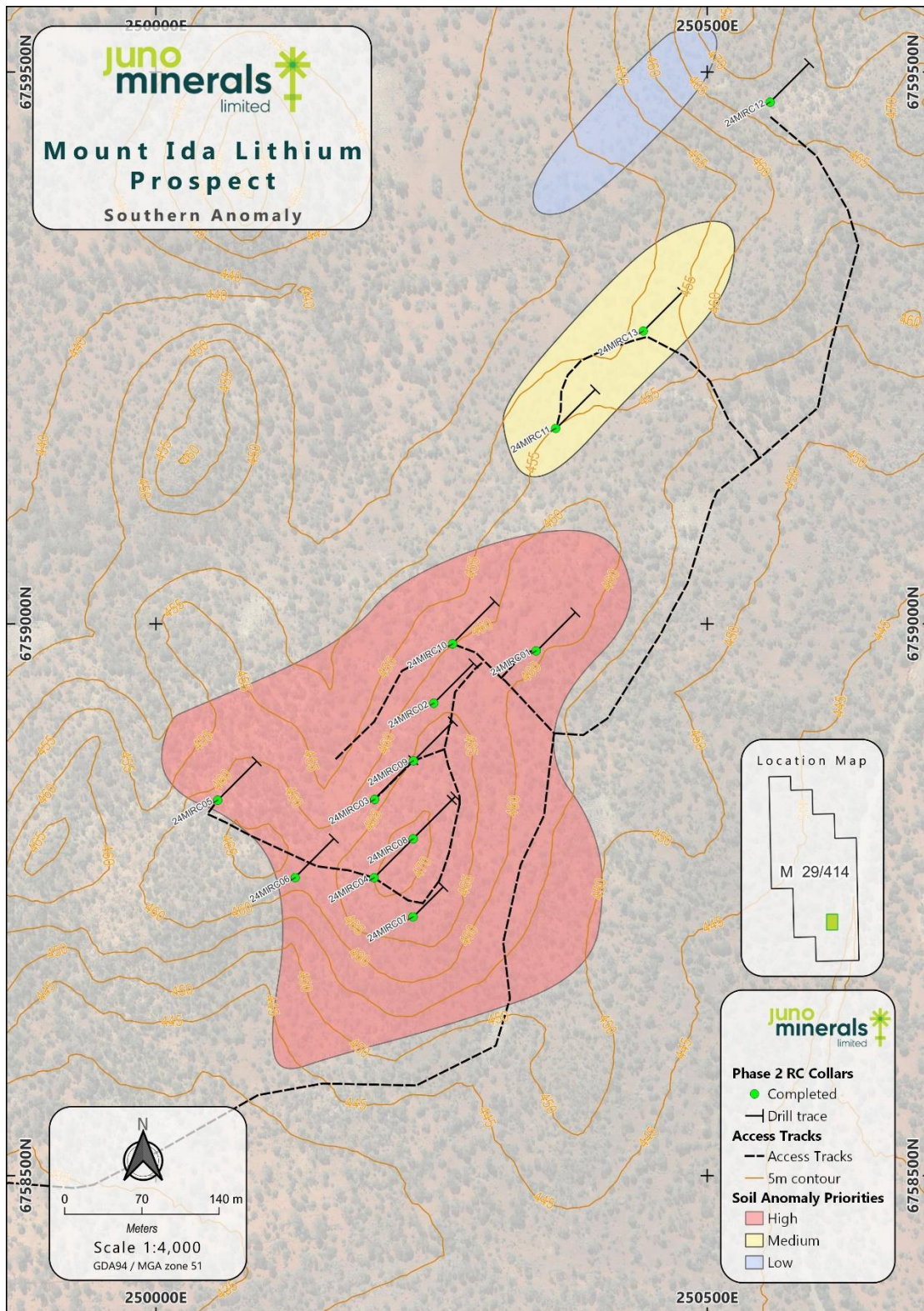


Figure 3: Southern anomaly completed drill positions on mapped pegmatites





Figure 4: Pegging revised drill positions targeting outcropping pegmatite



***Figure 5: Pegmatite outcrops protruded past the weathered mafic host rock with no clear dip. Dip has been deduced to be steep due to lack of pegmatitic scree on either side of the outcrops.
(Photo position: X: 250500, Y: 6759302)***





Figure 6: Near horizontal, laterally extensive pegmatite sill with foliated mafic basalt hanging wall and footwall extends parallel to the 465m topographical contour. (Photo position: X: 250174, Y: 6758746)

Further recommendations from the geochemical prospectively review, (refer: ASX announcement “Mount Ida Lithium Prospect – Geochemical Soils Review, 11th October 2023), was to undertake additional soil sampling programs firstly to close out the existing northern and southern anomalies as shown in Figure 7, and secondly on the balance of the Mount Ida mining lease north of the current anomalous areas and also the Mount Mason mining lease as shown in Figures 8 and 9 respectively. This soil sampling program was completed in parallel with the drill program. All samples have now been submitted for analysis under the Ultra Fine method, results are expected late February – early March upon which geochemical modelling will be undertaken to evaluate potential for additional anomalous zones.

The lithium prospectivity on Juno’s Central Yilgarn tenure is very encouraging with a completed first pass drilling program on the soil anomalies and an expanded soil testing program evaluating its tenure in an emerging lithium area of interest along the Mt Ida Fault.

This announcement has been approved for release by Greg Durack on behalf of the Board.

CONTACTS

Investor Relations

Greg Durack – Managing Director and CEO

P: + 61(0)8 9346 5599

E: investorrelations@junominerals.com.au



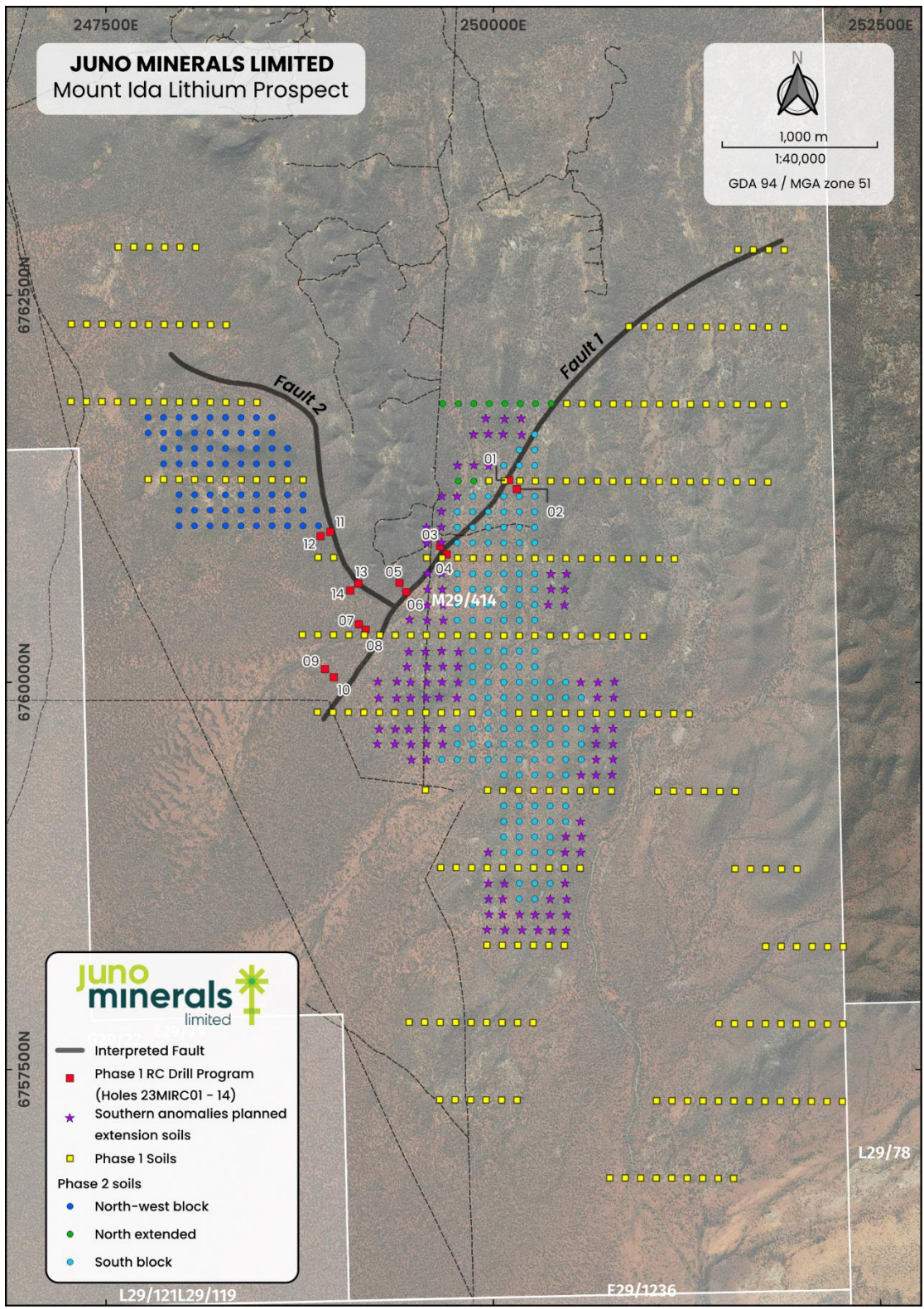


Figure 7: Extended soil sampling closing out anomalous zones (shown in purple).

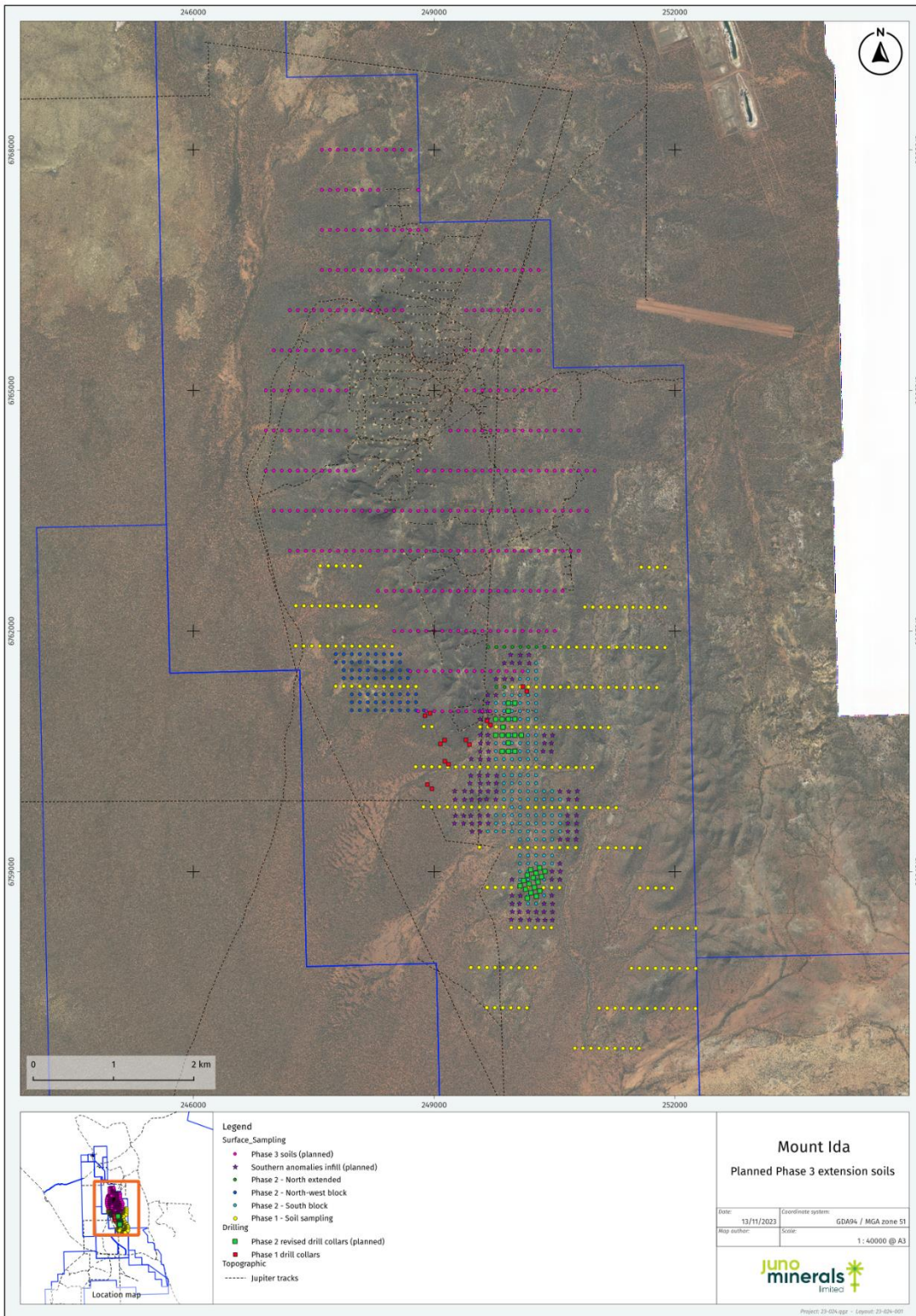


Figure 8: Extended soil sampling Mount Ida mining lease, M29/414.

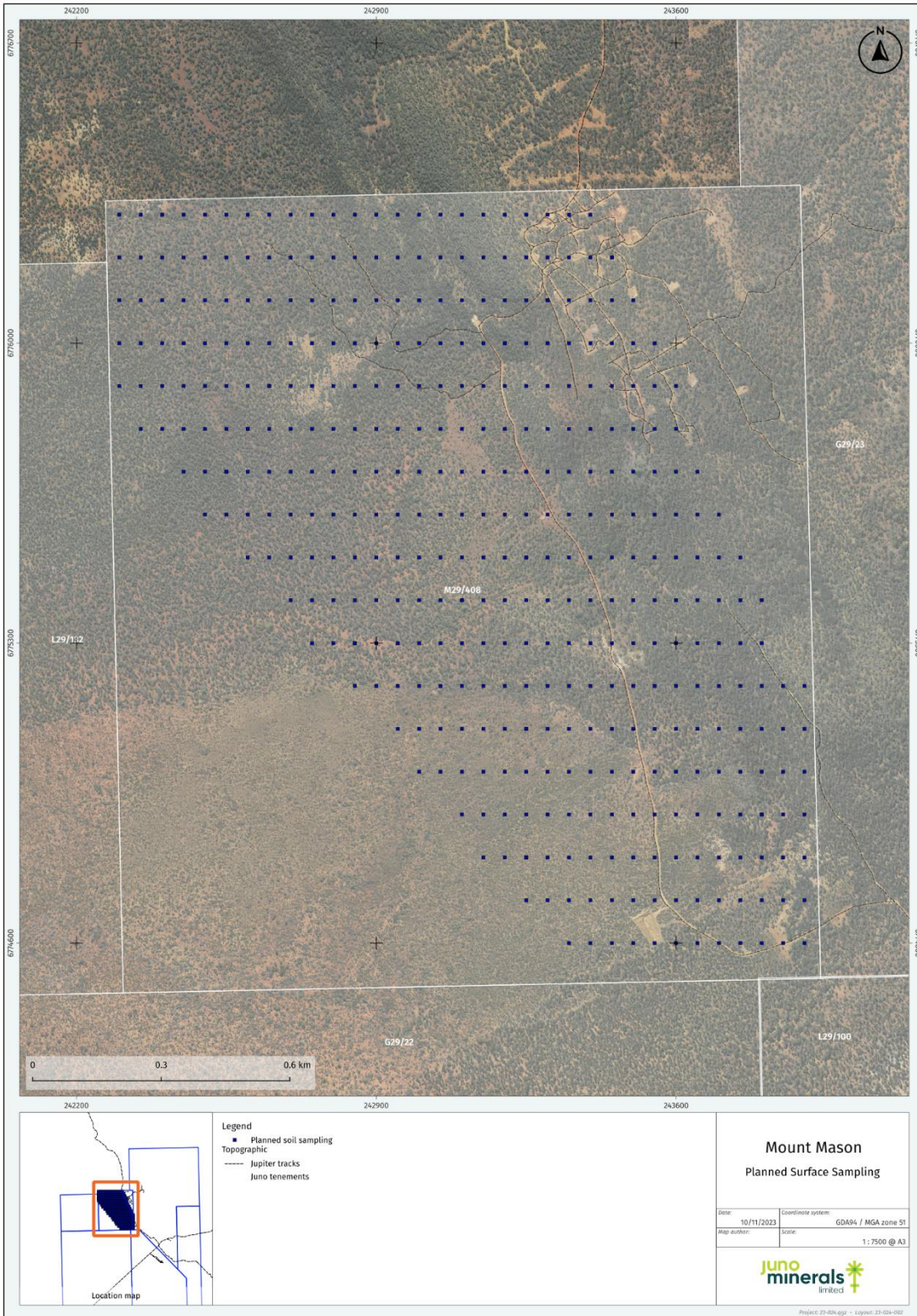


Figure 9: Completed soil sampling on Mount Mason mining lease, M29/408.



APPENDIX 1 – Juno’s Central Yilgarn Project with Mount Ida Lithium Prospect

