



magnetic resources™

# Magnetic Resources

An exciting gold development play in the  
heart of Laverton Western Australia

RIU Explorers Conference Fremantle 14 February 2024



## DISCLAIMER

The information contained in this presentation has been prepared by Magnetic Resources NL (MAU). This presentation is not an offer, invitation, solicitation or other recommendation with respect to the subscription for, purchase or sale of any securities in MAU. This presentation has been made available for information purposes only and does not constitute a prospectus, short form prospectus, profile statement or offer information statement. This presentation is not subject to the disclosure requirements affecting disclosure documents under Chapter 6D of the Corporations Act.

This presentation may contain certain forward-looking statements and projections regarding estimated, resources and reserves; planned production and operating costs profiles; planned capital requirements; and planned strategies and corporate objectives. Such forward looking statements/projections are estimates for discussion purposes only and should not be relied upon. They are not guarantee of future performance and involve known and unknown risks, uncertainties and other factors many of which are beyond the control of Magnetic Resources NL. The forward-looking statements/projections are inherently uncertain and may therefore differ materially from results ultimately achieved.

Magnetic Resources NL does not make any representations and provides no warranties concerning the accuracy of the projections and disclaims any obligation to update or revise any forward-looking statements/projects based on new information, future events or otherwise except to the extent required by applicable laws. While the information contained in this presentation has been prepared in good faith, neither MAU or any of its directors, officers, agents, employees or advisors give any representation or warranty, express or implied, as to the fairness, accuracy, completeness or correctness of the information, opinions and conclusions contained in this presentation. Accordingly, to the maximum extent permitted by law, none of MAU, its directors, employees or agents, advisers, nor any other person accepts any liability whether direct or indirect, express or limited, contractual, tortious, statutory or otherwise, in respect of, the accuracy or completeness of the information or for any of the opinions contained in this presentation or for any errors, omissions or misstatements or for any loss, howsoever arising, from the use of this presentation.

## COMPETENT PERSONS' STATEMENTS

Information in this presentation that relates to Exploration Targets is based on information reviewed or compiled by George Sakalidis BSc (Hons) who is a member of the Australasian Institute of Mining and Metallurgy. George Sakalidis is a director of Magnetic Resources NL. He has sufficient experience which is relevant to the style of mineralisation and type of deposit under consideration and to the activity which he is undertaking to qualify as a Competent Person as defined in the 2012 edition of the 'Australasian Code for Reporting of Exploration Results, Mineral Resources and Ore Reserves'. George Sakalidis consents to the inclusion of this information in the form and context in which it appears in this report.

Information in this presentation that relates to Mineral Resources is based on information compiled by Mr Matt Edwards BSc, who is a member of the Australasian Institute of Geoscientists. He is a fulltime employee of Blue Cap Mining Pty Ltd. He has sufficient experience that is relevant to the style of mineralisation and type of deposit under consideration and to the activity that is being undertaken to qualify as a Competent Person as defined in the 2012 Edition of the 'Australasian Code for Reporting of Exploration Results, Minerals Resources and Ore Reserves'. Mr Widenbar consents to the inclusion in the presentation of the matters based on his information in the form and context that the information appears.

## ASX LISTING RULES

The company has reported information contained in prior ASX announcements and has cross referenced these announcements. The Company confirms that is not aware of any information or assumptions since the announcements were made that would likely materially change the content of these announcements or the resources reported in those announcements in particular 3 February 2023.

This announcement references prior ASX announcements dated 24/01/2024, 23/11/2023, 1/11/2023, 19/10/2023, 26/09/2023, 7/09/2023, 22/08/2023, 7/08/2023, 31/07/2023, 14/07/2022, 23/06/2023, 14/06/2023, 11/04/2023, 20/02/2023, 15/02/2023, 3/02/2023, 25/01/2023, 24/11/2022, 17/11/2022, 24/10/2022, 29/09/2022, 27/09/2022, 15/08/2022, 20/07/2022, 27/06/2022, 30/05/2022, 11/05/2022, 12/04/2022, 21/02/2022, 10/01/2022, 29/11/2021, 17/11/2021, 22/10/2021, 14/09/2021, 16/08/2021, 08/07/2021, 23/06/2021, 3/06/2021, 29/04/2021, 19/04/2021, 15/02/2021, 12/02/2021, 8/02/2021, 11/01/2021, 01/12/2020, 16/11/2020, 02/11/2020, 27/10/2020, 18/09/2020, 3/08/2020, 29/06/2020, 18/05/2020, 5/05/2020, 9/03/2020, 27/02/2020, 20/02/2020, 5/2/2020, 23/1/2020, 17/1/2020, 28/1/2019.

This presentation has been authorised for release by George Sakalidis



# Why Invest in Magnetic Resources?

## Exceptional shallow gold discoveries...

- Original discovery, with 100% owned assets
- Surface deposits at HN9 and Lady Julie Central. The Lady Julie North 4 resource is still expanding with thick-high grade intersections below current resource of 852,600 oz. The resource for the whole Laverton Project is 1,235,790 oz published on 23 Nov 2023.

## Strategic Location

- Prime, 100% owned tenements in the heart of Laverton, within trucking distance 10-35km of numerous existing processing facilities, which are currently under utilised.

## Why buy Magnetic shares today?

- Recent incredible thick high-grade results at Lady Julie N4 are continuing to unfold.
- These new deeper drilling intercepts are both thick and continuous, creating a whole new scope for a significant upgrade to the existing resource.
- Magnetic Resources is in the right location with a number of nearby under utilised treatment facilities and a resource that is growing, we are well placed for success.



# Corporate Overview

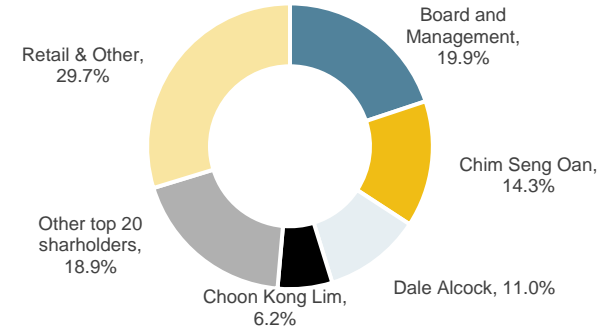
## Capitalisation Summary

ASX Code	MAU
Share price	\$1.00
Shares outstanding	244.1m
Party paid shares @ \$0.20	20.4m
Options	10.9m
<b>Market capitalisation</b>	<b>\$244.1m</b>
Cash (as at 25/01/24)	\$3.2m
<b>Enterprise value</b>	<b>\$240.6m</b>

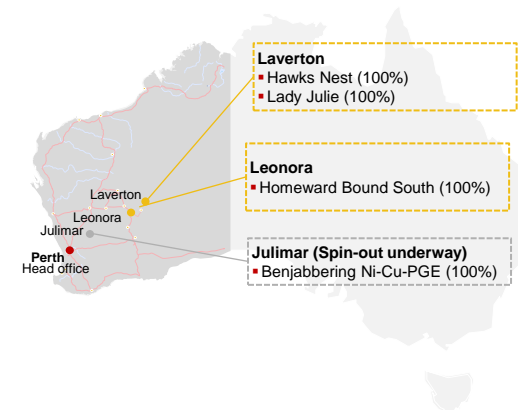
## Share Price – Last 12 Months



## Top Shareholders



## Location of Key Projects





# Magnetic's Unique Approach to Exploration

A successful track record of discovery using ground magnetics soil geochemistry and shallow seismic methods



**George Sakalidis**

Founder and Managing Director

- Founding director and shareholder of the Company
- Exploration geophysicist with over 30 years' industry experience
- Has been involved in several significant mineral discoveries, including the Three Rivers and Rose gold deposits, the Dongara Mineral Sands Deposits and the Boonanarring-Gingin South-Helene Mineral Sands Deposits in Western Australia

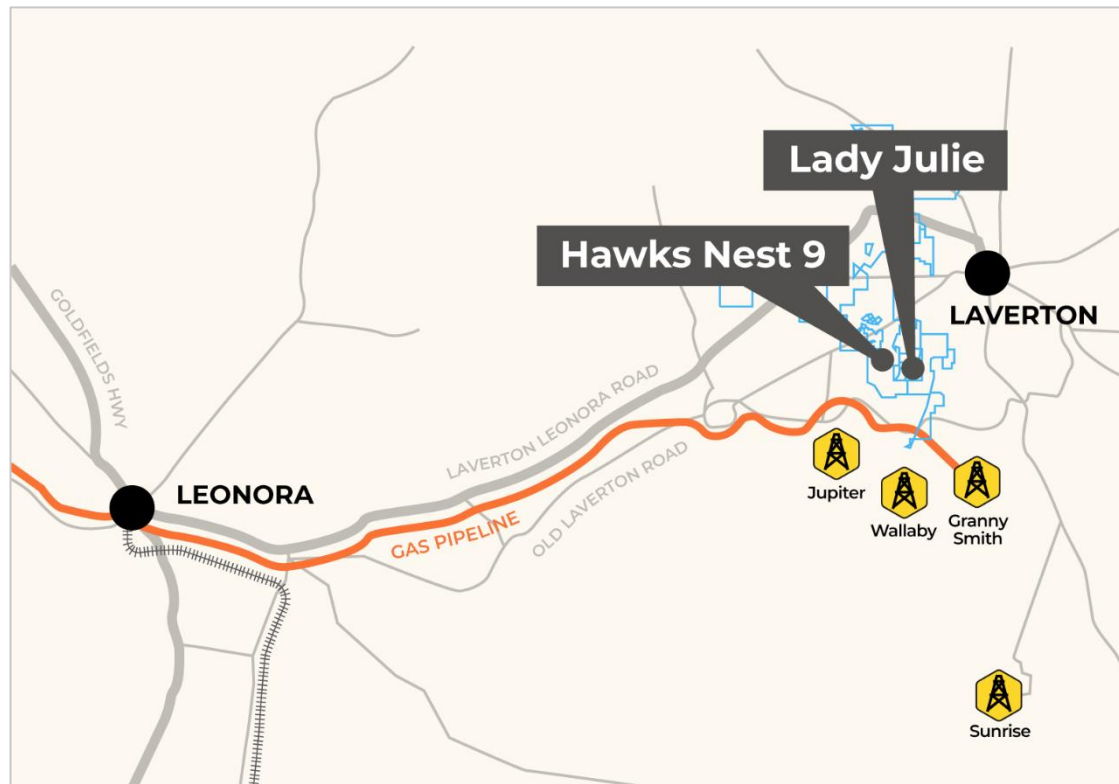


- Hawks Nest Tenement granted
- RC drilling at HN3-7
- Soil sampling program indicates a highly significant gold-in-soil anomaly over a 3km x 400m area
- Hawks Nest drilling outlines a near surface shallow dipping deposit over 2.5km x 200m
- Lady Julie & Homeward Bound tenements acquired
- Lady Julie Central drilling 25m at 4.4g/t from 0m
- Lady Julie 4 tenements acquired, with drilling quickly delivering thick intersections including 180m at 2.01g/t from 92m
- 1,898 RC/DD holes completed for 147,943m. Ongoing drilling down to 300 -500m depth at LJN4 as still open.
- Maiden Combined Resource announced
- Recent drilling of deeper thick intercepts at Lady Julie North 4, has opened a quantum change for the company to be significantly re-rated in the market.
- These outstanding results can be over often 100m in thickness and are a game changer



# Location, Location, Location

Magnetic's projects are well placed for existing critical processing

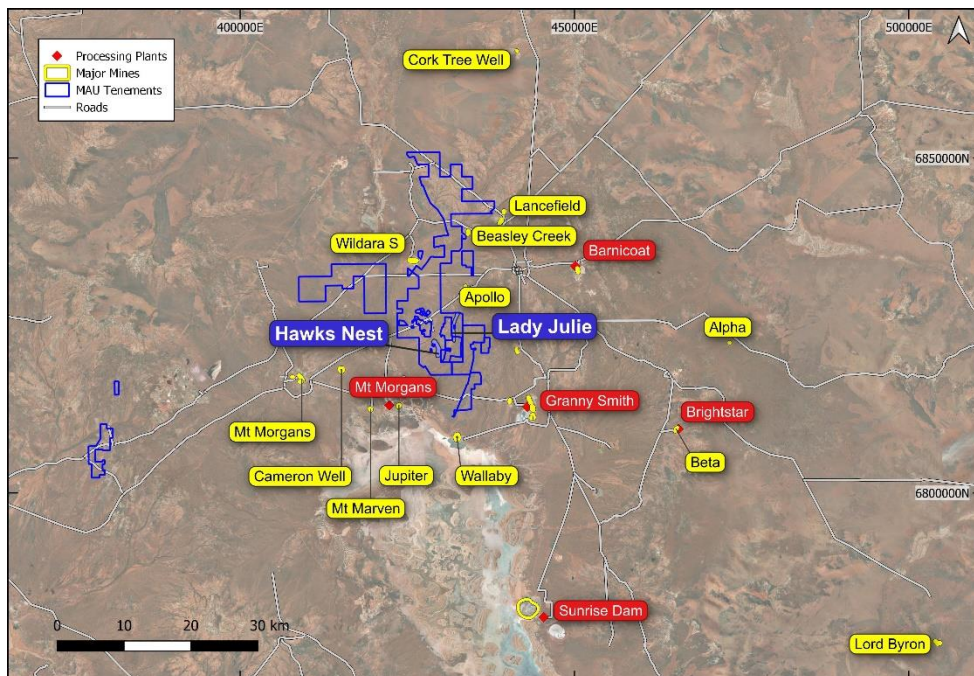


## Elephant Country

- The big mines like Wallaby and Sunrise Dam are located in this jurisdiction,
- The location is everything, roads and easy transport mean trucking to existing underutilised facilities is a real option. Finding gold is one thing – being able to process and deliver profits to shareholders is the primary objective
- In the current market, Magnetic is in prime position for both, we are expanding our existing resource, and our toll treatment options are immense



## Gold exploration in a world class gold belt

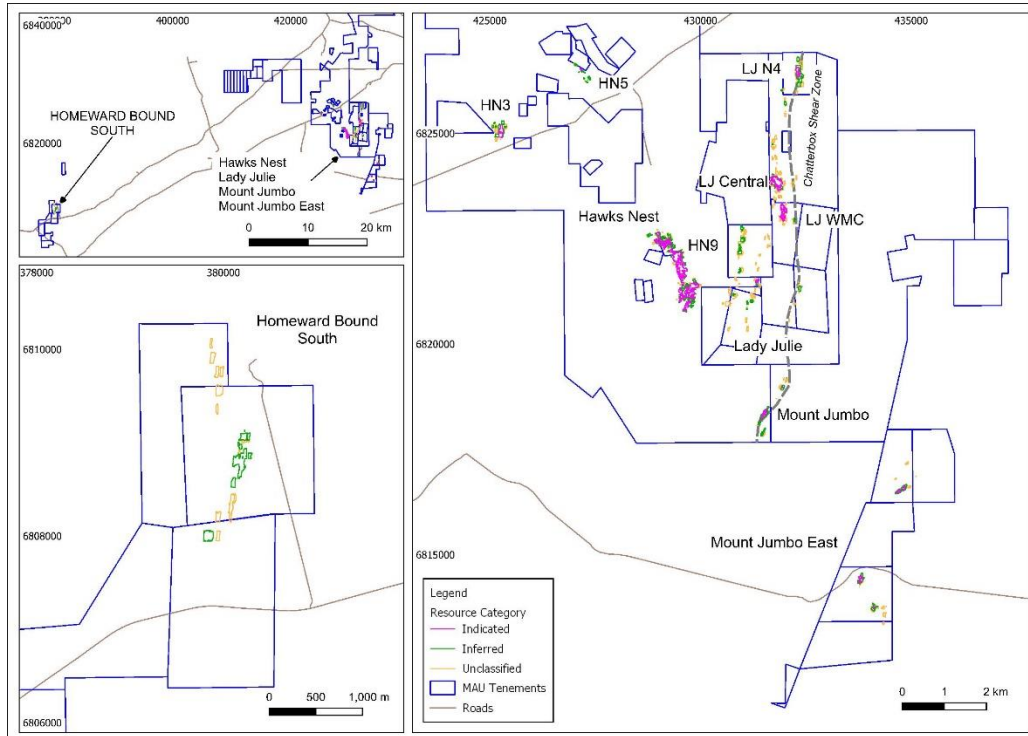


## Magnetic Assets

- Our 100% owned tenements are within 10-35km of existing well-known operators, including
  - Goldfields Genesis/ Dacian
  - Anglo-Ashanti
  - Genesis/ Dacian
- This is the heart of the Laverton goldfields with world class deposits.



Magnetic has recently announced its Updated Resource 22.7Mt @1.69g/t Au for 1,235,000 oz at 0.5g/t cut-off



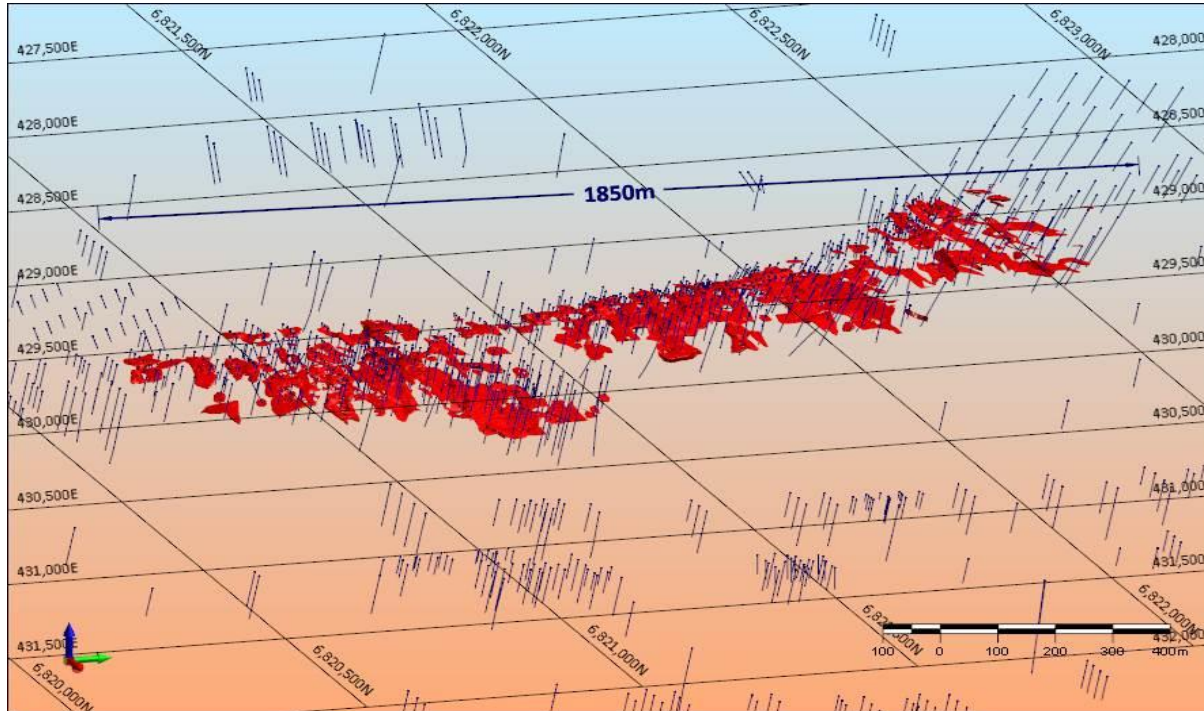
## Resource

- Updated Resource was announced 23/11/2023
- It was a 107% increase of the total ounces from 3 February 2023.
- Significantly, the contained gold in the Lady Julie North 4 has risen from 204,000oz to 852,000oz
- This is a 317% increase
- Low discovery cost of \$24/ounce for all resources
- Resource comprises, 10.4Mt Indicated @ 1.74g/t containing 584,430oz and 12.2Mt Inferred @ 1.65g/t containing 651,360oz and a total of 22.7Mt @ 1.69g/t containing 1,235,790 at 0.5g/t cutoff.



# Hawks Nest 9 –Perspective Looking West

HN9 Resource (Indicated and Inferred) 3.2Mt at 1.22g/t for 123,000oz within a 2km x 200m zone



## HN9 Gold Resource

- The HN9 (Indicated and Inferred) Resource of 3.2Mt at 1.22 g/t for 123,000 oz is contained within three main zones within a 2km x 200m wide area and is largely within the Indicated Category (63%).
- Number of intersections starting from surface include :
  - 12m at 1.5g/t from surface in MHNRC153
  - 8m at 2.5g/t from surface in MHNRC270
  - 7m at 4.8g/t from 11m in MHNRC456

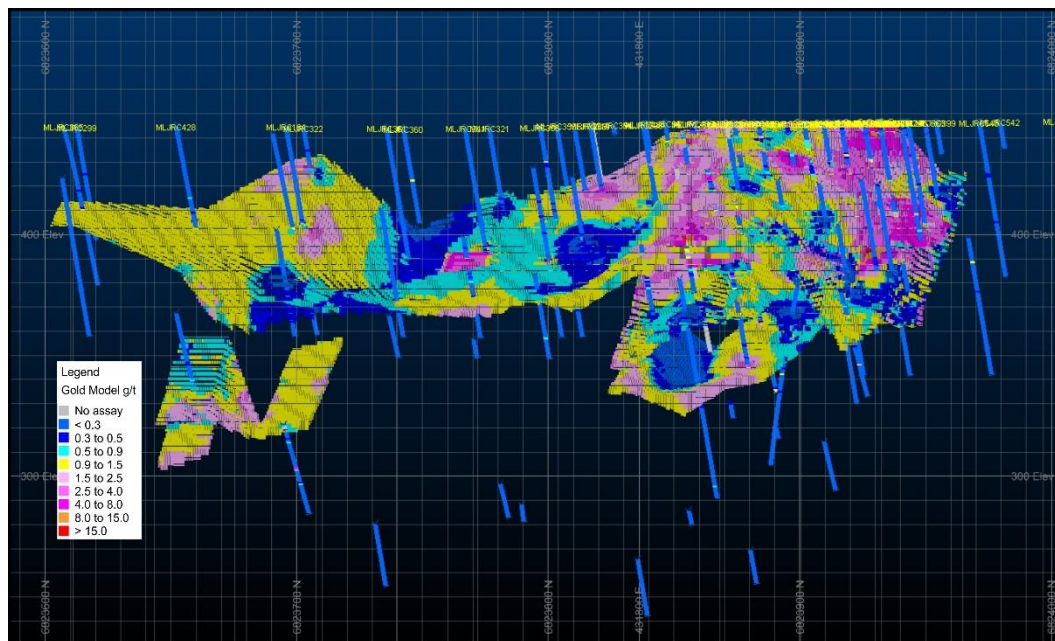


# Lady Julie Central - Perspective Looking West

Lady Julie Central Resource (Indicated and Inferred) 1.33Mt at 1.88g/t for 72,200oz within a 400m x 200m zone

## Lady Julie Central Gold Resource

- The Lady Julie Central (Indicated and Inferred) Resource of 1.33 Mt at 1.68 g/t for 72,200 oz is 350m by 200m in area and can be 20-50m thick and is predominately an Indicated Category (48%).
- Some thicker intersections from surface include :
  - 25m at 4.4g/t from 0m in MLJRC348
  - 22m at 4.1g/t from 0m in MLJRC457
  - 40m at 1.5g/t from 0m in MLJRC482
  - 20m at 3.6g/t from 0m in MLJRC545
  - 30m at 2.65 g/t from 6m in MLJRC453
  - 39m at 1.6g/t from 7m in MLJRC295
  - 24m at 3.55g/t from 64m in MLJRC731
  - 72m at 1.54g/t from 36m in MLJRC732
  - 52m at 1.49g/t from 32m in MLJRC733

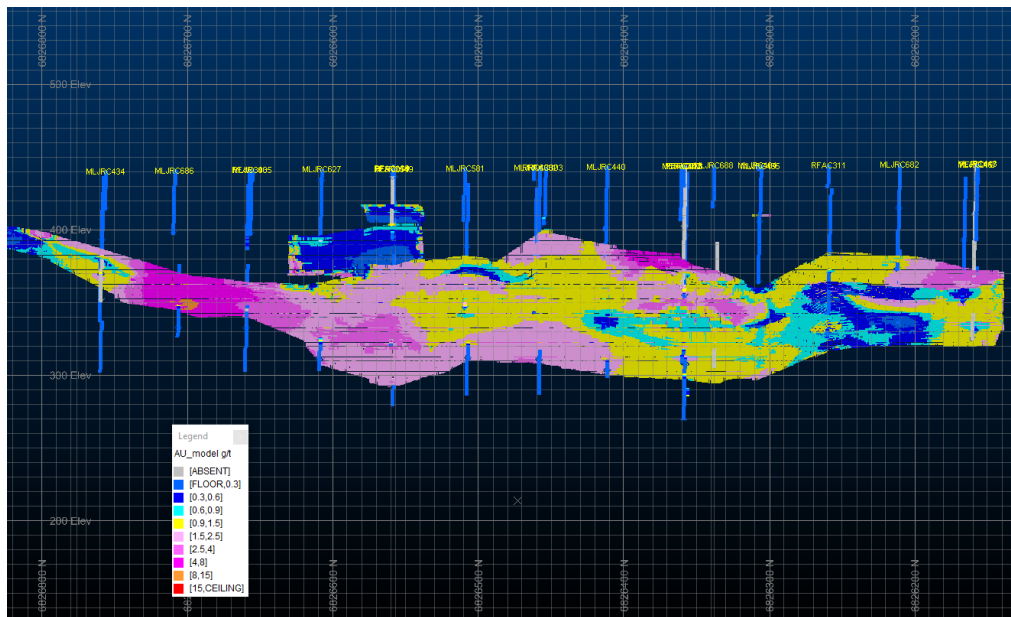


Lady Julie Central Long Section showing main gold intersections and resource wireframes and block grades.



# Lady Julie North 4 –Perspective Looking West

Lady Julie North 4 Resource (Indicated and Inferred) 13.1Mt at 2.02g/t for 852,000oz over 750m x 350m area



Lady Julie North 4 Long Section showing main gold intersections, resource wireframes and block grades.

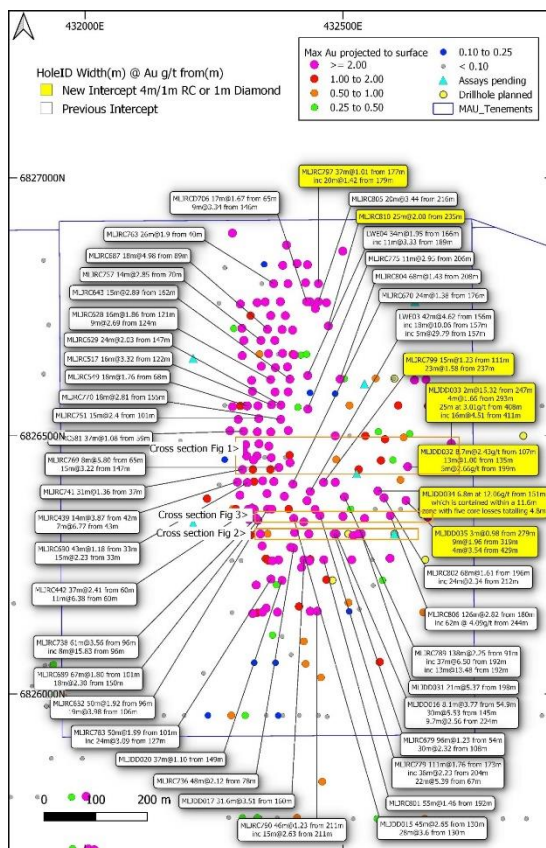
## Lady Julie North 4 Gold Resource

- This resource is partly in the Indicated Category (51%)
- The long section mainly shows a flat plunging thickened mineralised lodes that are shallowing to the north.
- Lady Julie North 4 there are multiple thick and high-grade intersections, which includes:
  - 37m at 2.4g/t from 60m in MLJRC442
  - 14m at 3.9g/t from 42m in MLJRC439
  - 15m at 6.0g/t from 92m in MLJRC687
  - 50m at 1.9g/t from 96m in MLJRC632
  - 24m at 2.0g/t from 147m in MLJRC629
  - 67m at 1.8g/t from 101m in MLJRC689
  - 96m at 1.2g/t from 54m in MLJRC679
  - 60m at 3.6g/t from 96m in MLJRC738
  - 45m at 2.65g/t from 130m in MLJDD015
  - 42m at 4.62g/t from 156m in LWE03
  - 30m at 5.53g/t from 145m in MLJDD016
  - 31m at 3.54g/t from 160m in MLJDD017
  - 112m at 1.81g/t from 172m in MLJRC779
  - 120m at 2.68g/t from 152m in MLJRC789
  - 126m at 2.82g/t from 180m in MLJRC806



# Lady Julie North 4 – Resource continues to grow

Lady Julie North 4 Resource (Indicated and Inferred) 13.1Mt at 2.02g/t for 852,000oz within an 750m x 350m area



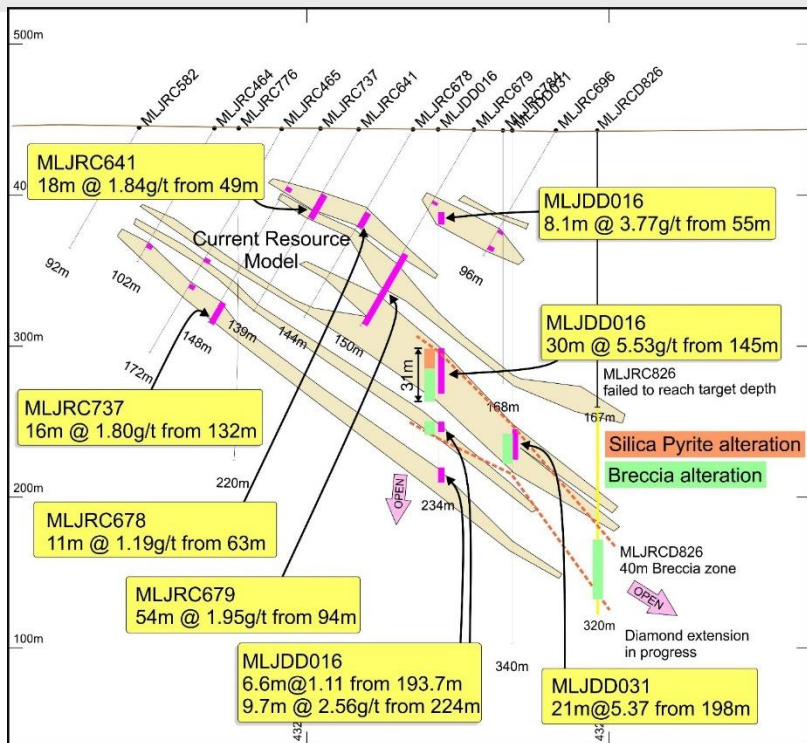
## Lady Julie North 4 Gold Resource is growing

- Thick breccia silica pyrite intersections have now been outlined over a 250m length in the central and southern part of LJN4
- It is still open further south and down dip where the grade have so far been increasing with depth.
- Multiple thick and high-grade intersections include :
  - 37m at 2.4g/t from 60m in MLJRC442
  - 14m at 3.9g/t from 42m in MLJRC439
  - 15m at 6.0g/t from 92m in MLJRC687
  - 50m at 1.9g/t from 96m in MLJRC632
  - 24m at 2.0g/t from 147m in MLJRC629
  - 67m at 1.8g/t from 101m in MLJRC689
  - 96m at 1.2g/t from 54m in MLJRC679
  - 60m at 3.6g/t from 96m in MLJRC738
  - 45m at 2.65g/t from 130m in MLJDD015
  - 42m at 4.62g/t from 156m in LWEO3
  - 30m at 5.53g/t from 145m in MLJDD016
  - 31m at 3.54g/t from 160m in MLJDD017
  - 112m at 1.81g/t from 172m in MLJRC779
  - 120m at 2.68g/t from 152m in MLJRC789
  - 126m at 2.86g/t from 180m in MLJRC806



# Lady Julie North 4 – Cross Section showing new thick high-grade extensions

Lady Julie North 4 Resource (Indicated and Inferred) 13.1Mt at 2.02g/t for 852,000oz within a 750m x 350m area



## Lady Julie North 4 Gold Resource is Growing

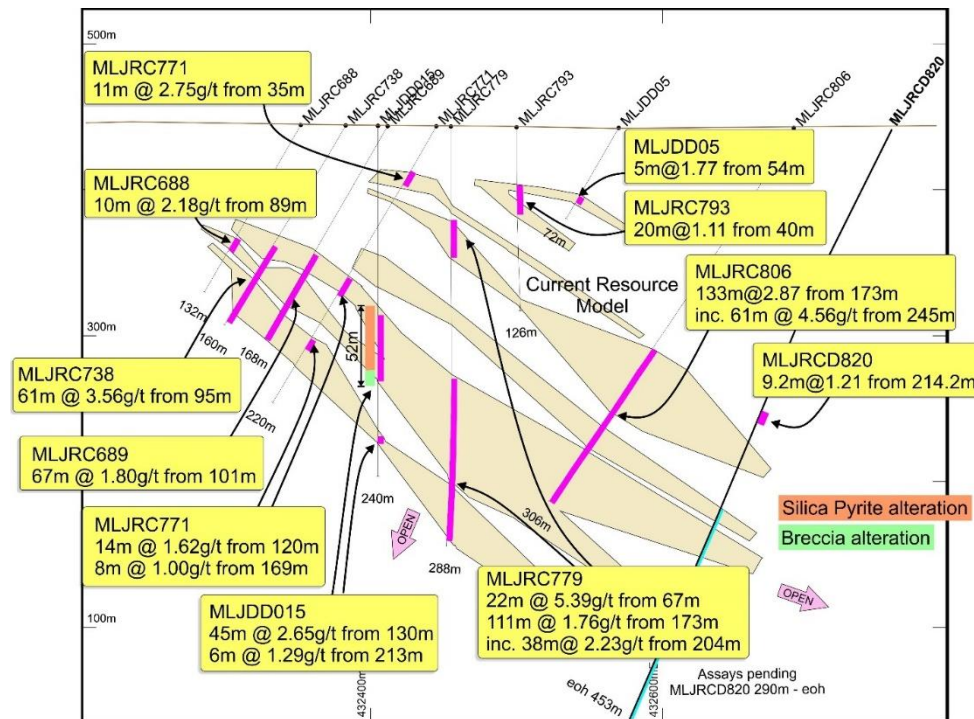
- Two diamond holes have revealed strong silica-pyrite and breccia alteration that are up to a very thick 52m in combined thickness in MLJDD015, with a strong correlation with the main mineralised gold intervals.
- MLJRC826 has intersected a 40.6m thick breccia zone from 270.5-311.1m that is still open to the south and down dip.
- The nature and extent of breccia zones are important in the nearby world class Sunrise Dam Deposit because brecciated veins and shoots often carry the highest grades and are associated with many of the individual deposits at depth and near surface.
- In addition, there is an upper strongly mineralised zone shown with an intersection of 54m at 2.0g/t from 94m in MLJRC679.

Lady Julie North 4 cross section 3 showing open thickened high-grade dipping gold zone containing breccia and silica-pyrite alteration, upper mineralised zone and older resource model.



# Lady Julie North 4 – Cross Section showing new thick high-grade extensions

Lady Julie North 4 Resource (Indicated and Inferred) 13.1Mt at 2.02g/t for 852,000oz within an 750m x 350m area



## Lady Julie North 4 Gold Resource is Growing

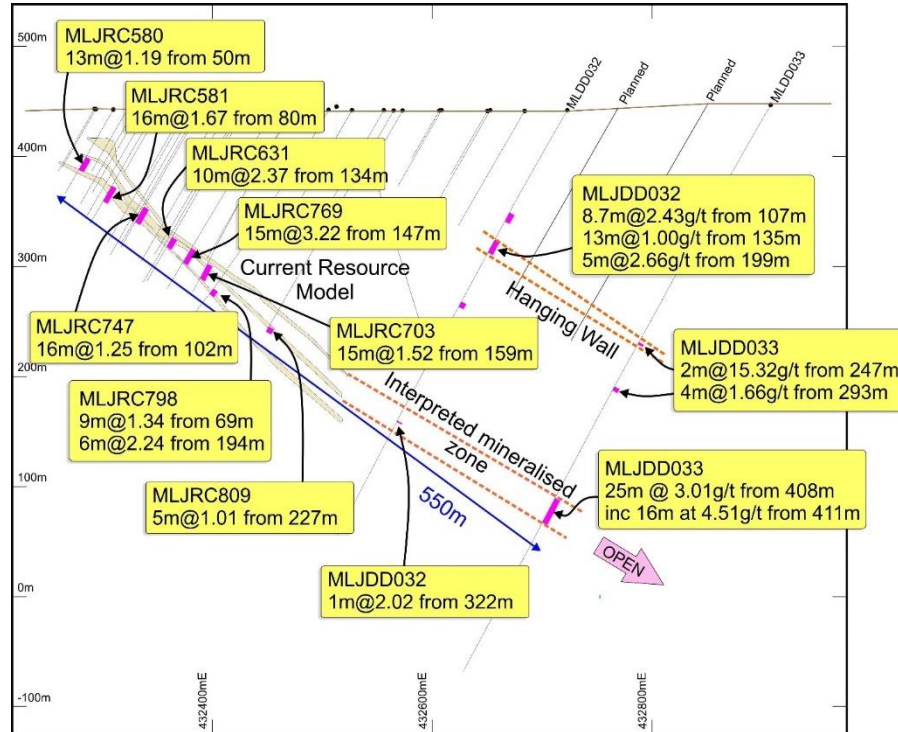
- Follow up of the very exciting high-grade thick intersections, which are within broad zones of up to 50m of combined thickness of silica-pyrite and breccia zones, which has an intersection of 45m at 2.7g/t from 130m in MLJDD015 has located further thick intersections down dip including:
  - 111m at 1.8g/t from 173m in MLJRC779
  - 126m at 2.8g/t from 180m in MLJRC806
  - 15m at 6.0g/t from 92m in MLJRC687
  - 50m at 1.9g/t from 96m in MLJRC632
- In addition, an upper strongly mineralised zone shown with an intersection of 22m at 5.4g/t from 67m in MLJRC779.
- Results for the deeper part of MLJDD820 from 290-453m are pending.

Lady Julie North 4 cross section 2 showing open thickened high-grade dipping gold zone containing breccia and silica-pyrite alteration, upper mineralised zone and older resource model.



# Lady Julie North 4 – Cross Section showing deep intersections beyond 400m depth

Lady Julie North 4 Resource (Indicated and Inferred) 13.1Mt at 2.02g/t for 852,000oz within 750m x 350m area



## Lady Julie North 4 Gold Resource is Growing

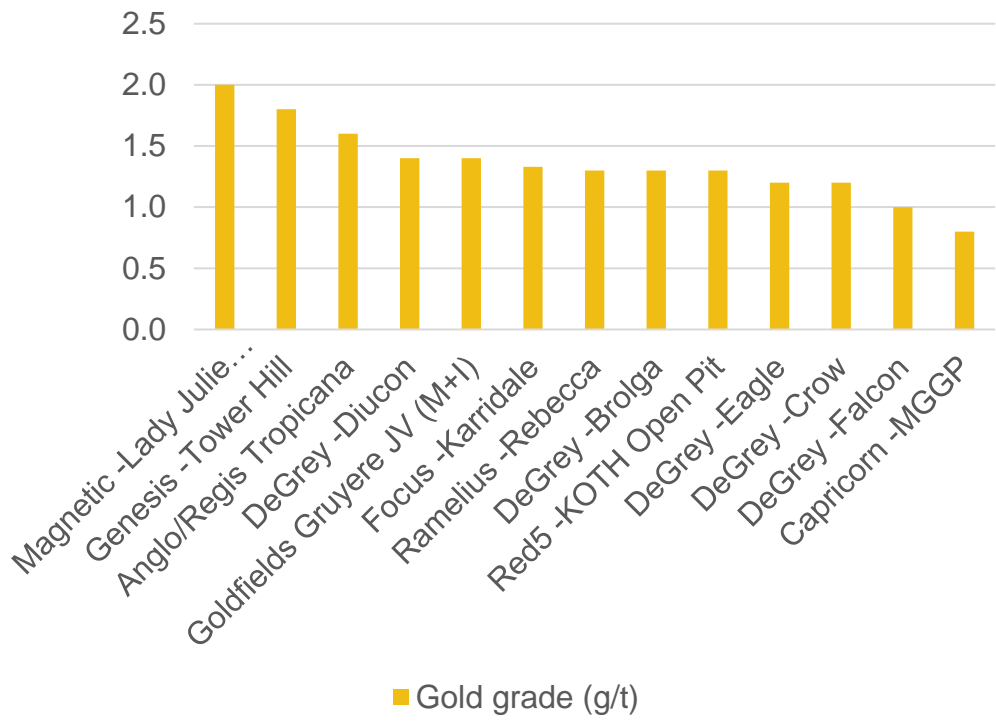
- MLDD033 intersected 16m at 4.51g/t from 411m, which was a very large 200m step out below the current resource. This intersection of 72 gram-metres is potentially underground mineable and is still open down dip.
- This cross section indicates mineralisation continuity of 550m down dip, which is by far the biggest down dip extension identified to date within LJN4. Deeper holes to follow up are being planned.
- New hanging wall mineralisation was also discovered in MLJDD033 with an intersection of 2m at 15.32g/t from 247m, and 8.7m at 2.43g/t from 107m and 13m at 1.00g/t from 135m in MLJDD032. These hanging wall intersections are associated with a breccia zone and are planned to be followed up with RC drilling.

Lady Julie North 4 cross section 1 showing open thickened high-grade dipping gold zone below 400m depth and is open to the east and south and at depth and resource model.



# Lady Julie North 4 is the industry leader- Grade is King.

WA Open Pit gold deposits >  
850,000 Ounces



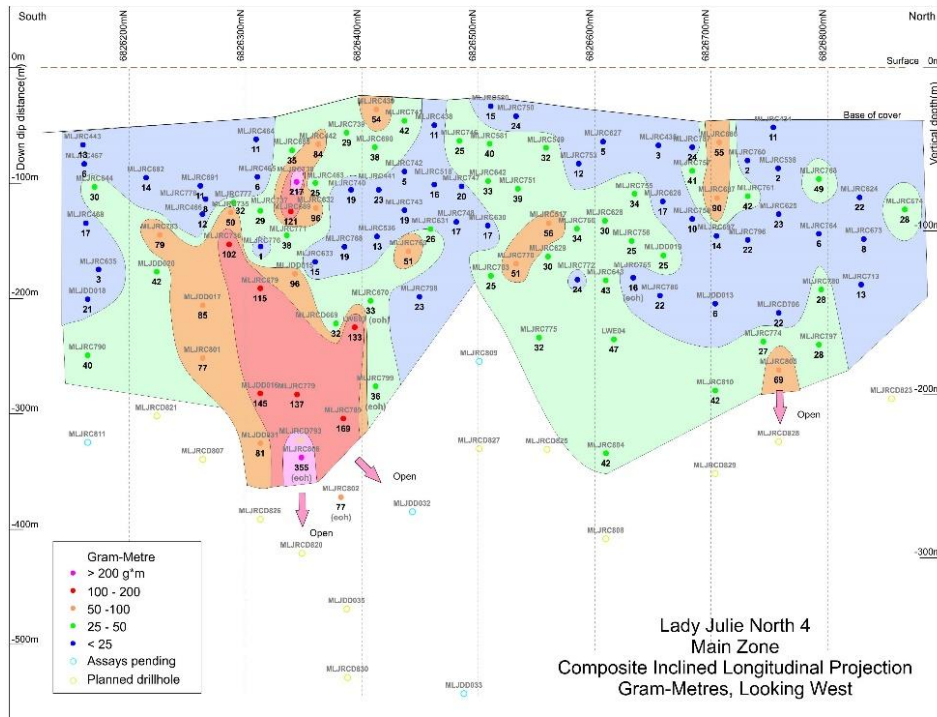
- This diagram demonstrates the highest average grade of the Lady Julie 4 North deposit when compared to other WA Open Pit gold deposits > 850,000 ounces.
- Lady Julie North 4 gold mineralisation covers an 750m x 350m area and starts at 30m depth and is still open at depth below 300m.

Source Company Reports see appendix 4



# Lady Julie North 4 – NS Inclined Longitudinal Projection

Gold zones (g-m) are continuous open at depth and the southern core zone is highlighted

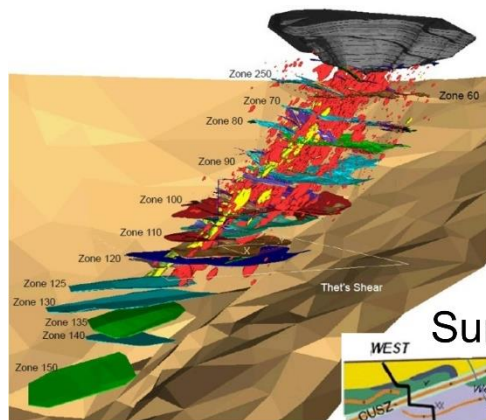


- This diagram helps to highlight the total gold content of individual gold rich zones and also show how the whole of LJN4 as open at depth with a southern thick core zone as being extremely prospective.
- The core of the southern “flame” zone with a tenor of over 100g-m and up to 355g-m represents an amazing discovery in its own right, with many deeper holes planned below it to try to extend down to at least 400m depth. A deep drill programme of 15 holes for 5215m (average 348m) has already started with three rigs on site.
- With an average grade of the existing LJN4 resource close to 2g/t (Table 2), the mineralisation is continuous over 800m along strike and so far up to 250m down dip from the base of cover.
- The fact that the tenor of mineralisation increases with depth is encouraging both from the point of resource expansion but also for the potential for mining at depth.
- The longitudinal projection shows a good degree of consistency of the mineralisation over the entire LJN4 deposit.

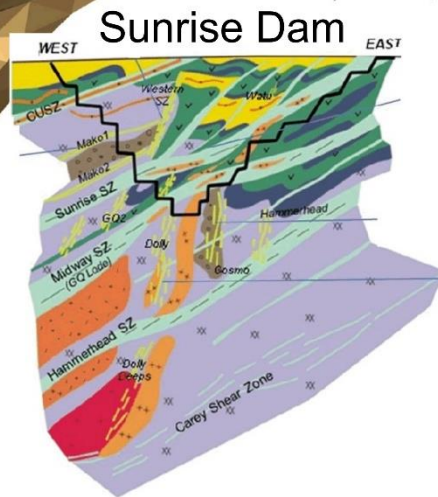


# World Class Adjacent Deposits – Elephants

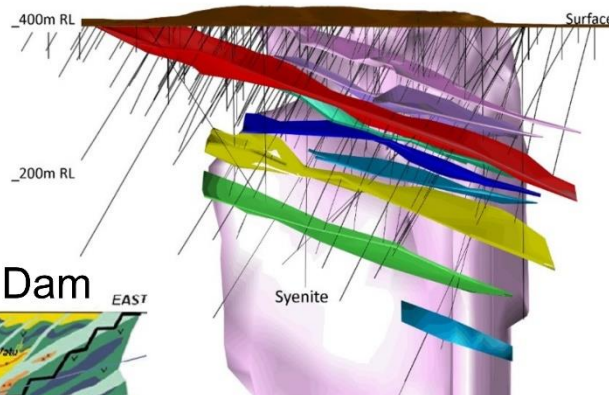
Major gold deposits at Laverton have intrusions and stacked lodes and can have breccia Zones



Wallaby



Sunrise Dam



Jupiter

## Typical Laverton Characteristics

- Deep seated intrusions some of which come to surface. Wallaby and Jupiter deposits have syenite intrusions that come close to surface. Sunrise has deeper intrusions that do not get to surface and are more similar to our deposits
- Shallow-dipping stacked gold lodes or shear zones that continue at depth. Magnetic's Lady Julie North 4 deposit is similar and has up to three stacked lodes with thick gold rich silica pyrite and breccia zones up to 50m thick



Lady Julie North 4 Resource (Indicated and Inferred) 13.1Mt at 2.02g/t for 852,600oz within an 800 x 200m area



MLJDD020\_178.0m\_Polymictic Breccia with silica-pyrite clast



MLJDD018\_198.0m Vuggy Silica Alteration



MLJDD019\_148.4m\_visceral texture in bleached, silicified ultramafic.

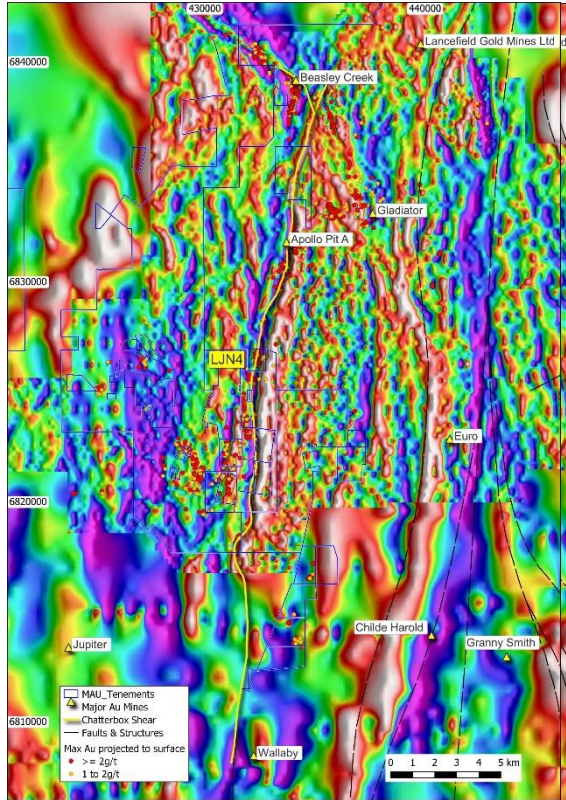
## Lady Julie North 4 Alteration styles

- Vuggy silica and/or silica-pyrite mineralisation: this intense alteration destroys the nature of the protolith and comprises a porous network of silica veins and masses, with or without disseminated pyrite, in a clayey, sandy matrix.
- Polymictic breccia: a mixed breccia of chert, felsic porphyry, and ironstone (possibly after pyrite), sometimes with quartz or silica clasts, in a siliceous or ferruginous matrix. Pyrite content is highly variable ranging up to semi-massive to massive in places.
- Silicified ultramafic: the footwall ultramafic sequence at LNJ4 is mineralised in pale, bleached and silicified zones showing intense deformation (informally termed “visceral” texture) with or without quartz stockwork veining and with minor disseminated pyrite.
- The silica-pyrite and breccia zones occur in a series of moderately east-dipping (45-50°) zones up to 52 metres in width. Sometimes these zones appear to coalesce to form broader mineralised zones. The silica-pyrite and breccia mineralisation occur in an interdigitated sequence of massive chert and carbonate intruded by felsic porphyries.
- Strong thick breccia zones are also present within the Sunrise Dam Deposit owned by Anglo Ashanti where the breccia lodes carry significant higher-grade mineralisation are associated with a number of internal deposits.
- In most cases they are near vertical and link the sub horizontal major shear zones and can also be subparallel to the major mineralised shear zones near surface. The silicified ultramafic mineralisation occurs in an ultramafic unit in the footwall of the chert-carbonate sequence.



# Major Regional structure the Chatterbox shear

Chatterbox shear is over 30km in length and controls the position of many deposits including LJN4

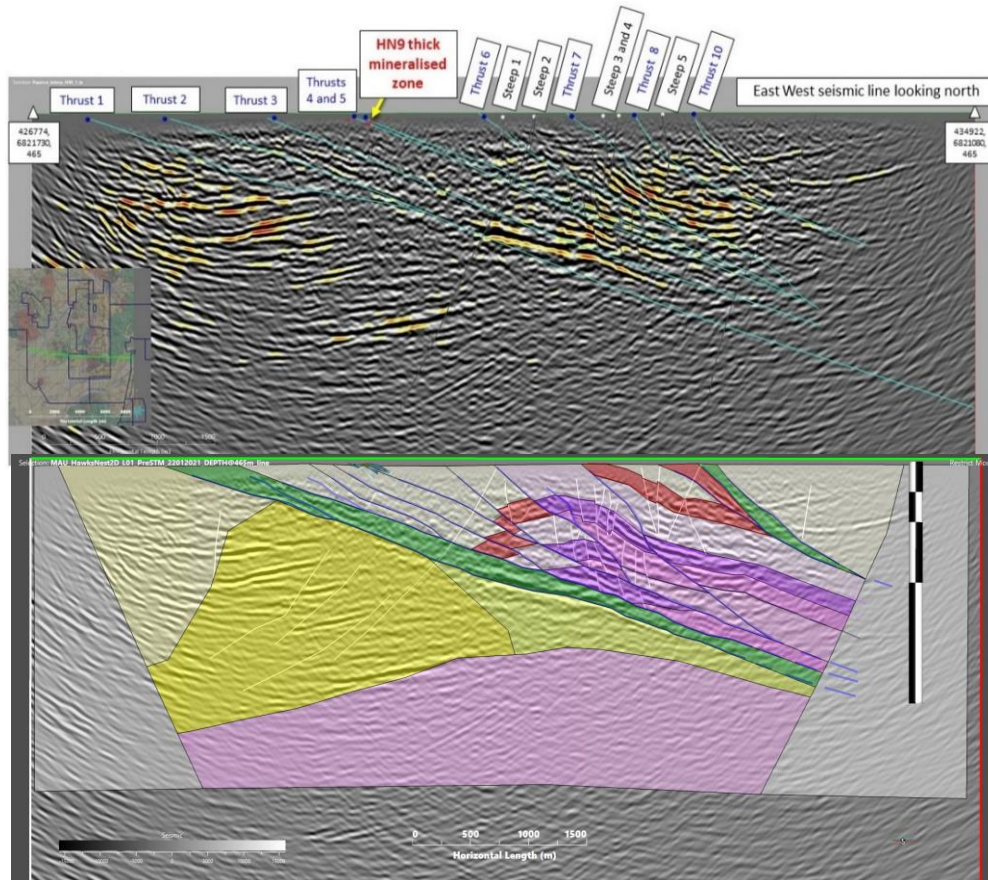


- Many gold deposits have been outlined within the 32km long chatterbox shear.
- A 6km zone is present within magnetics tenements south of LJN4.
- A number of anomalous intersections are being followed up with further RC drilling looking to find satellite deposits similar to LJN4



# HN9 – Lady Julie 2D EW Shallow Seismic Results

## EW Seismic HN9 and Lady Julie



## Seismic Results

- EW 8km long 2D shallow seismic section interpretation showing major thrusts 1 to 10 thrust packages that come close to surface associated with HN9 (1 to 5) and Lady Julie (6 to 10) and with great depth extents down to 2km
- Individual thrusts correlates with surface mineralisation at HN9 and Lady Julie
- Note the thrust fold repeats of the ultramafic (darker purple) and BIF (red) and steep faults which represent a potential fluid migration pathway and trap within the fold



# Laverton Project – Mining Proposal and Economic Study

HN9-Lady Julie deposits early work programmes are near completion. Aim to submit Mining Proposal to DIMRS and submit PFS in late February

## Study Status

- Flora, fauna, hydrology, soil – studies over key resource area – completed.
- Groundwater – regional study completed. Review of pit dewatering to follow LJV4 pit design and schedule.
- Geotechnical analysis of potential pit shells for all three resources has been completed. Additional diamond drilling is underway on the E flank of LJV4 to provide more geotechnical data in that key area.
- DTM (digital terrain model) – now have detailed survey coverage over 5 key areas
- Optimisation – a number of case studies, allowing analysis of key variables, have been completed following the resource upgrade. Pit design for LJV4 is in process using the preferred shell.
- Native Title – negotiations have commenced following the submission of a Mining Lease application.
- Heritage Survey – survey completed.

## Metallurgical testing

- Metallurgical testing of LJV4 samples – further tests have commenced to review gravity recovery within the deeper silica-pyrite and breccia alteration zones.
- Ore/waste characterization – tests completed. No hazardous elements or AMD potential was identified in any of the samples presented.

## Resource review

- BCM completed a resource review of LJV4 and LJC, with results released to ASX 23 November 2023, where there has been a significant resource upgrade for LJV4.

## Economic Study

- Blue Cap Mining are preparing a pre-feasibility document for LJV4, HN9 and LJC this is due in February.



# Why Invest in Magnetic Resources?

## Exceptional shallow gold discoveries...

- Original discovery, with 100% owned assets
- Surface deposits at HN9 and Lady Julie Central. The Lady Julie North 4 resource is still expanding with thick-high grade intersections below current resource of 852,600 oz. The resource for the whole Laverton Project is 1,235,790 oz published on 23 Nov 2023.

## Strategic Location

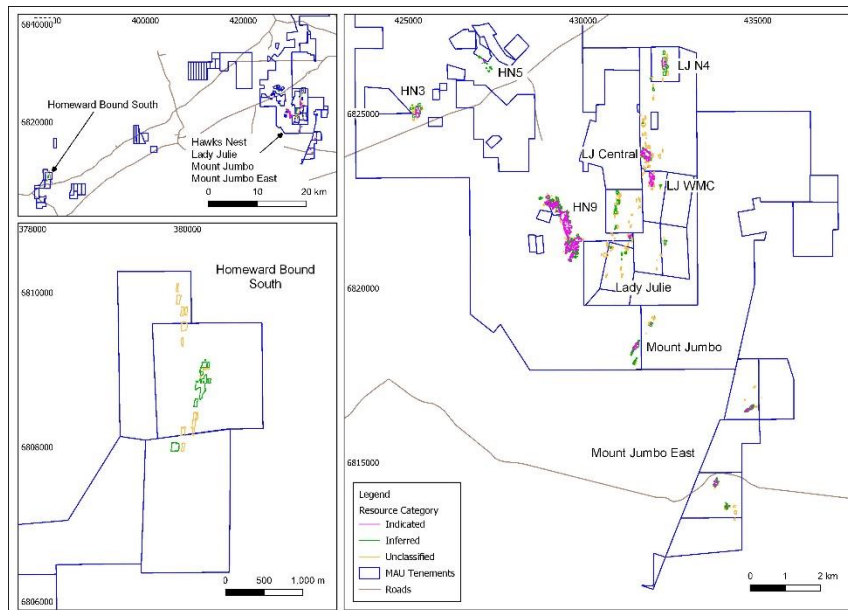
- Prime, 100% owned tenements in the heart of Laverton, within trucking distance 10-35km of numerous existing processing facilities, which are currently under utilised.

## Why buy Magnetic shares today?

- Recent incredible thick high-grade results at Lady Julie N4 are continuing to unfold.
- These new deeper drilling intercepts are both thick and continuous, creating a whole new scope for a significant upgrade to the existing resource.
- Magnetic Resources is in the right location with a number of nearby under utilised treatment facilities and a resource that is growing, we are well placed for success.



## Overview of Magnetic's Laverton and Homeward Bound South Resources and Total Mineral Resources at 0.5g/t Au Cutoff.



Classification	Au Cutoff	Tonnes	Au	Ounces
Indicated	0.50	10,400,000	1.74	584,400
Inferred	0.50	12,200,000	1.65	651,300
Total	0.50	22,700,000	1.69	1,235,800



# Appendix 2

## References for grade BAR chart in slide 19

Deposit	Classification	Tonnes	Au g/t	Ounces
LJN4	Indicated	6,807,400	1.95	426,200
LJC	Indicated	792,000	1.97	50,200
HN9	Indicated	1,995,000	1.29	82,800
Other resources	Indicated	837,400	0.94	25,230
<b>Total</b>	<b>Indicated</b>	<b>10,431,800</b>	<b>1.74</b>	<b>584,430</b>
LJN4	Inferred	6,329,700	2.10	426,400
LJC	Inferred	541,600	1.26	22,000
HN9	Inferred	1,182,000	1.25	47,600
Other resources	Inferred	4,193,700	1.15	155,160
<b>Total</b>	<b>Inferred</b>	<b>12,247,000</b>	<b>1.65</b>	<b>651,360</b>
LJN4	Total	13,137,100	2.02	852,600
LJC	Total	1,333,600	1.68	72,200
HN9	Total	3,177,000	1.28	130,400
Other resources	Total	5,031,100	1.12	180,390
<b>Total</b>	<b>Total</b>	<b>22,678,800</b>	<b>1.69</b>	<b>1,235,790</b>



# Appendix 3

## Updated Mineral Resource by Deposit at 0.5g/t Au cutoff

Deposit	Classification	Tonnes	Au g/t	Ounces
LJN4	Indicated	6,807,400	1.95	426,200
LJC	Indicated	792,000	1.97	50,200
HN9	Indicated	1,995,000	1.29	82,800
Other resources	Indicated	837,400	0.94	25,230
<b>Total</b>	<b>Indicated</b>	<b>10,431,800</b>	<b>1.74</b>	<b>584,430</b>
LJN4	Inferred	6,329,700	2.10	426,400
LJC	Inferred	541,600	1.26	22,000
HN9	Inferred	1,182,000	1.25	47,600
Other resources	Inferred	4,193,700	1.15	155,160
<b>Total</b>	<b>Inferred</b>	<b>12,247,000</b>	<b>1.65</b>	<b>651,360</b>
LJN4	Total	13,137,100	2.02	852,600
LJC	Total	1,333,600	1.68	72,200
HN9	Total	3,177,000	1.28	130,400
Other resources	Total	5,031,100	1.12	180,390
<b>Total</b>	<b>Total</b>	<b>22,678,800</b>	<b>1.69</b>	<b>1,235,790</b>

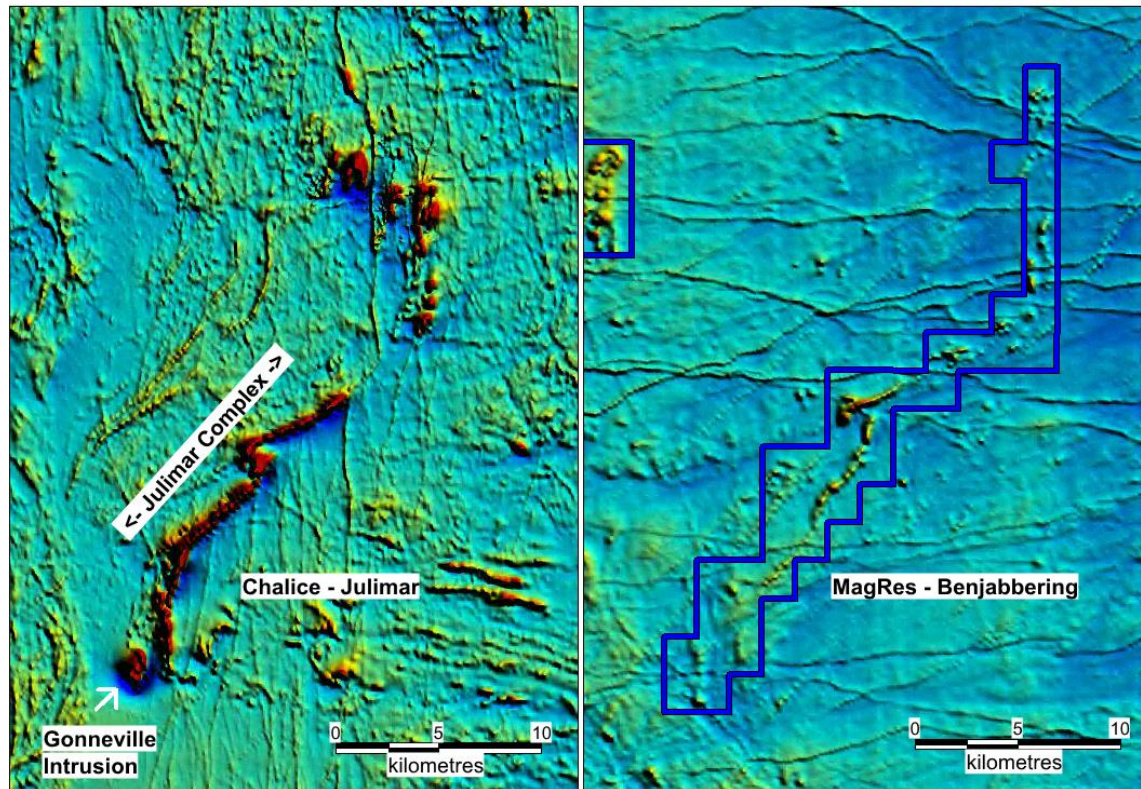


## Company reports relating to grade slide page 19

<a href="https://genesisminerals.com.au/downloads/announcements/gmd2023070302.pdf">https://genesisminerals.com.au/downloads/announcements/gmd2023070302.pdf</a>
<a href="https://regisresources.com.au/investor-centre/reports/">https://regisresources.com.au/investor-centre/reports/</a>
<a href="https://degreymining.com.au/wp-content/uploads/2023/11/20231121-ASX-DEG-Hemi-MRE-Update-lodgement.pdf">https://degreymining.com.au/wp-content/uploads/2023/11/20231121-ASX-DEG-Hemi-MRE-Update-lodgement.pdf</a>
<a href="https://www.goldfields.com/pdf/investors/integrated-annual-reports/2022/gold-fields-mineral-resources-and-mineral-reserves-supplement-2022.pdf">https://www.goldfields.com/pdf/investors/integrated-annual-reports/2022/gold-fields-mineral-resources-and-mineral-reserves-supplement-2022.pdf</a>
<a href="http://www.focusminerals.com.au/our-projects/resourcereserve-table/">http://www.focusminerals.com.au/our-projects/resourcereserve-table/</a>
<a href="https://www.rameliusresources.com.au/wp-content/uploads/bsk-pdf-manager/2023/09/2607598.pdf">https://www.rameliusresources.com.au/wp-content/uploads/bsk-pdf-manager/2023/09/2607598.pdf</a>
<a href="https://degreymining.com.au/wp-content/uploads/2023/11/20231121-ASX-DEG-Hemi-MRE-Update-lodgement.pdf">https://degreymining.com.au/wp-content/uploads/2023/11/20231121-ASX-DEG-Hemi-MRE-Update-lodgement.pdf</a>
<a href="https://red5limited.com/site/pdf/7d9a3e58-6709-4004-86f2-77b6491639c1/Red-5-Ore-Reserve-and-Mineral-Resource-Statement.pdf">https://red5limited.com/site/pdf/7d9a3e58-6709-4004-86f2-77b6491639c1/Red-5-Ore-Reserve-and-Mineral-Resource-Statement.pdf</a>
<a href="https://degreymining.com.au/wp-content/uploads/2023/11/20231121-ASX-DEG-Hemi-MRE-Update-lodgement.pdf">https://degreymining.com.au/wp-content/uploads/2023/11/20231121-ASX-DEG-Hemi-MRE-Update-lodgement.pdf</a>
<a href="https://degreymining.com.au/wp-content/uploads/2023/11/20231121-ASX-DEG-Hemi-MRE-Update-lodgement.pdf">https://degreymining.com.au/wp-content/uploads/2023/11/20231121-ASX-DEG-Hemi-MRE-Update-lodgement.pdf</a>
<a href="https://degreymining.com.au/wp-content/uploads/2023/11/20231121-ASX-DEG-Hemi-MRE-Update-lodgement.pdf">https://degreymining.com.au/wp-content/uploads/2023/11/20231121-ASX-DEG-Hemi-MRE-Update-lodgement.pdf</a>
<a href="https://capmetals.com.au/wp-content/uploads/2023/12/2023.12.15-MGGP-resource-update-FINAL.pdf">https://capmetals.com.au/wp-content/uploads/2023/12/2023.12.15-MGGP-resource-update-FINAL.pdf</a>



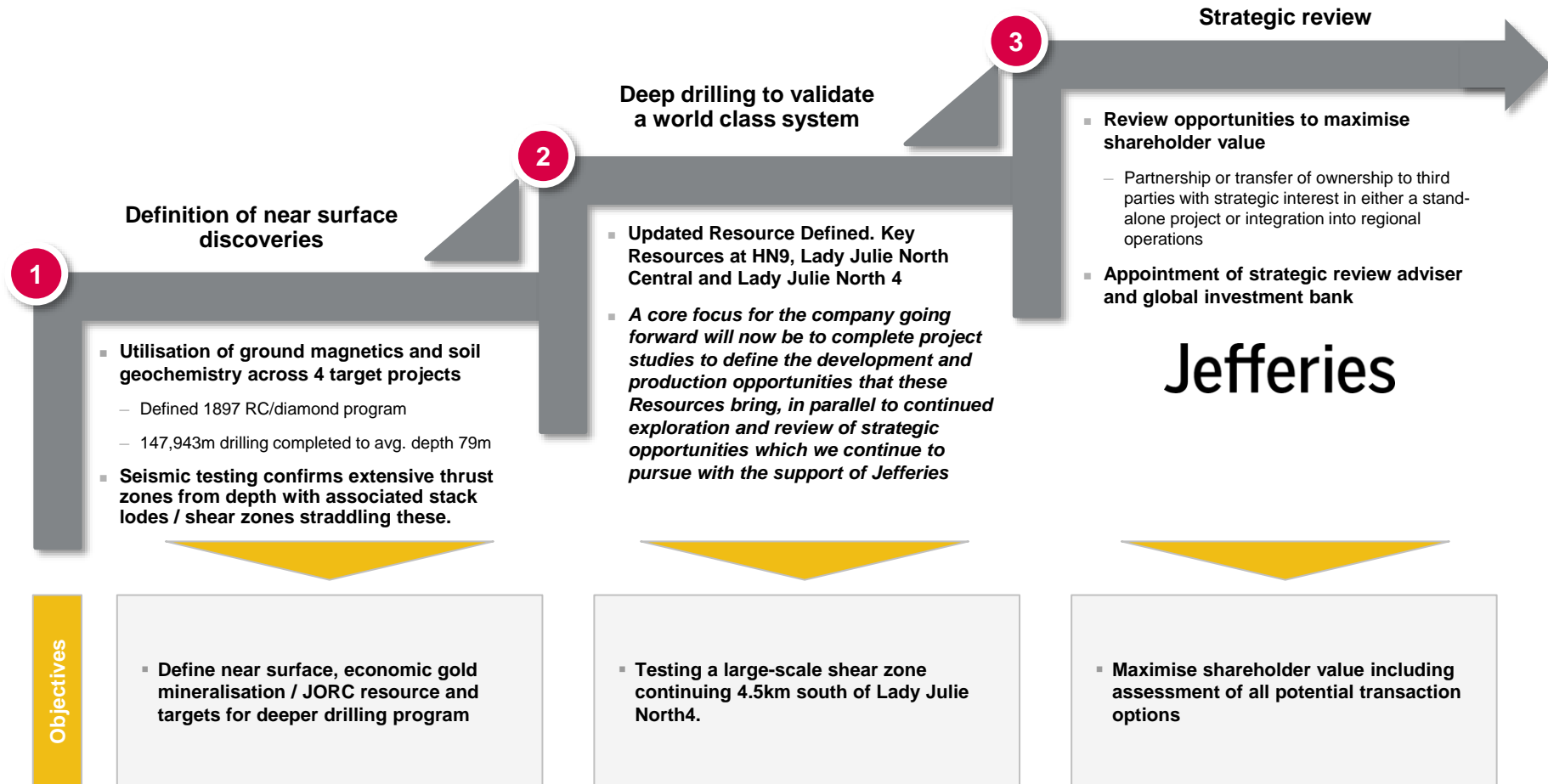
## Julimar lookalike areas east of Northam



## Julimar

- These projects were selected based on aeromagnetic interpretation after noting the structural setting of the Julimar complex and the Gonneville mineralised discrete magnetic Ni-Cu-PGE body
- The 112sq. km Benjabbering Project has a large 25km long sinuous aeromagnetic pattern that trends in a NE and N direction and is very similar to the Julimar trends and structures. Several thickened zones may represent possible feeder areas for potential Ni-Cu-PGE mineralisation
- Both the Trayning and Korrelocking Projects have a 2km discrete magnetic target prospective for REES.







Contact : [george@magres.com.au](mailto:george@magres.com.au) Mobile 0411640337



magnetic resources<sup>NL</sup>