

# Mines and Money Miami

FEBRUARY 2024

Anson Resources | ASX: ASN

# DISCLAIMER & IMPORTANT NOTICE

The information contained in this confidential document ("Presentation") has been prepared by Anson Resources Limited (the "Company"). It has not been fully verified and is subject to material updating, revision and further amendment. The Information may not be distributed to others at any time without the prior written consent of the Company (including the presentation) any copies thereof, and will destroy all analysis, complications and other documents or writings whatsoever containing or reflecting any such material.

While the information contained herein has been prepared in good faith, neither the Company nor any of its shareholders, directors, officers, agents, employees or advisers give, have given or have authority to give, any representations or warranties (express or implied) as to, or in relation to, the accuracy, reliability or completeness of the information in this Presentation, or any revision thereof, or of any other written or oral information made or to be made available to any interested party or its advisers (all such information being referred to as "Information") and liability therefore is expressly disclaimed. Accordingly, neither the Company nor any of its shareholders, directors, officers, agents, employees or advisers take any responsibility for, or will accept any liability whether direct or indirect, express or implied, contractual, tortious, statutory or otherwise, in respect of, the accuracy or completeness of the Information or for any of the opinions contained herein or for any errors, omissions or misstatements or for any loss, howsoever arising, from the use of this Presentation.

Neither the issue of this Presentation nor any part of its contents is to be taken as any form of commitment on the part of the Company to proceed with any transaction and the right is reserved to terminate any discussions or negotiations with any prospective investors. In no circumstances will the Company be responsible for any costs, losses or expenses incurred in connection with any appraisal or investigation of the Company. In furnishing this Presentation, the Company does not undertake or agree to any obligation to provide the recipient with access to any additional information or to update this Presentation or to correct any inaccuracies in, or omissions from, this Presentation which may become apparent.

This Presentation should not be considered as the giving of investment advice by the Company or any of its shareholders, directors, officers, agents, employees or advisers. Each party to whom this Presentation is made available must make its own independent assessment of the Company after making such investigations and taking such advice as may be deemed necessary. In particular, any estimates or projections or opinions contained herein necessarily involve significant elements of subjective judgment, analysis and assumptions and each recipient should satisfy itself in relation to such matters.

This Presentation includes certain statements that may be deemed "forward-looking statements". All statements in this discussion, other than statements of historical facts, that address future activities and events or developments that the Company expects, are forward-looking statements. Although the Company believes the expectations expressed in such forward-looking statements are based on reasonable assumptions, such statements are not guarantees of future performance and actual results or developments may differ materially from those in the forward-looking statements. Factors that could cause actual results to differ materially from those in forward-looking statements include market prices, continued availability of capital and financing, and general economic, market or business conditions. Investors are cautioned that any such statements are not guarantees of future performance and that actual results or developments may differ materially from those projected in forward-looking statements.

# PARADOX LITHIUM PROJECTS

100% OWNED



Anson Resources Ltd, via subsidiary A1 Lithium Inc, is developing the Paradox Lithium Projects in Utah, USA

## Made in the USA

Anson will play a critical role in the onshoring of the lithium supply chain to North America enabling the electrical transformation of the U.S.A. Anson can benefit from the EV adoption policies which provide consumer subsidies and low-cost loans to producers.

## Green lithium

Anson's lithium extraction process is more efficient, uses less water, and produces less CO2 than hard rock and brine evaporation process. Geo hydraulic extraction using pressure to extract.

## Commercially proven technology

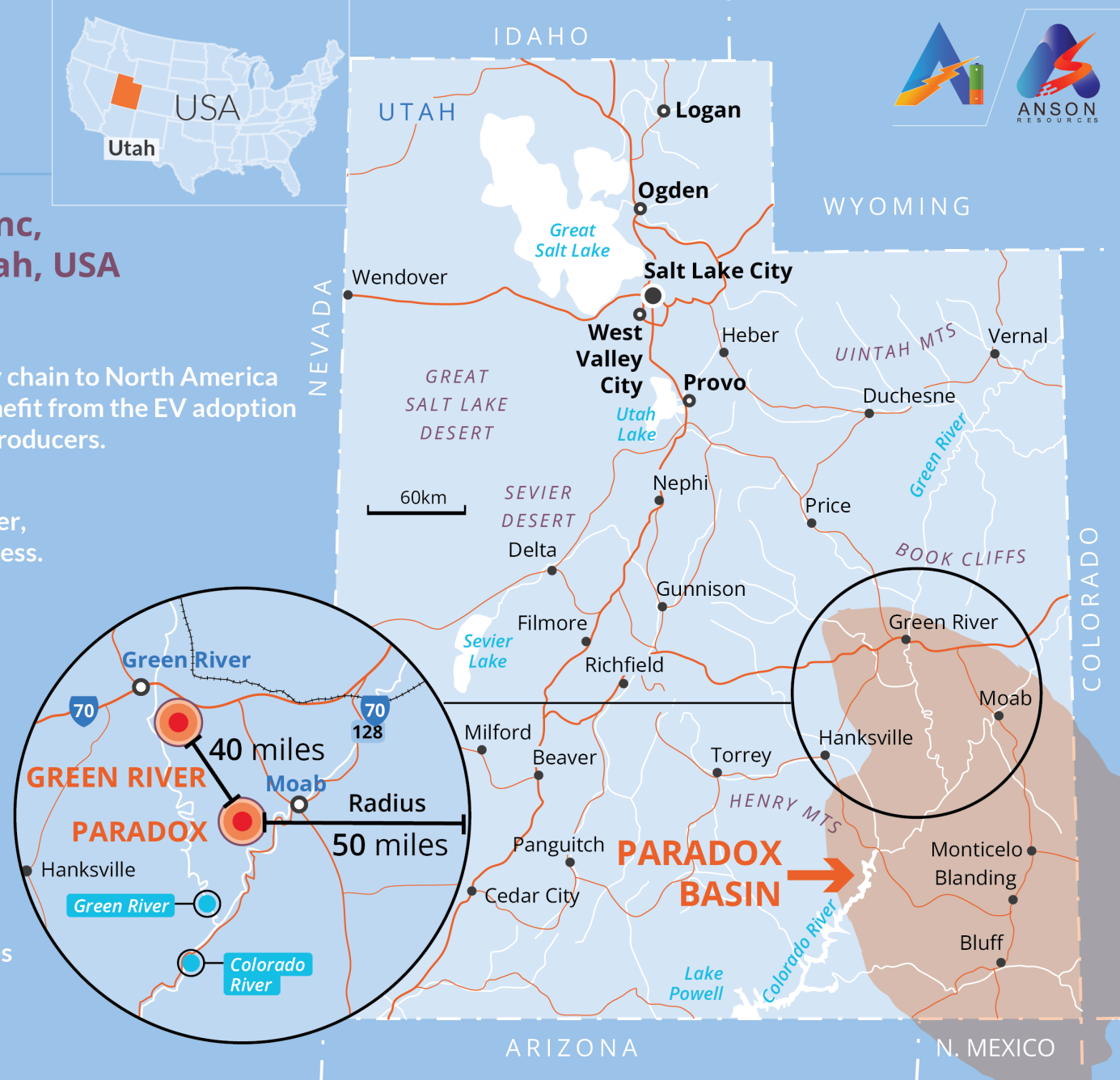
Anson's lithium extraction process technology has been in commercial use since 2018 and currently produces 32ktpa of LCE.

## Strong Project Economics

Anson's DFS (Sept 2022) to produce 13,000 tpa of LCE confirms a low-cost and long-life project with material upside to include bromine production and further expand lithium production.

## Growth

Anson's paradox basin projects, in the USA, have a JORC resources of 1.5 million tonnes of Lithium Carbonate Equivalent (LCE) and drilling programs are targeting a further increase in resource.





# INTERPRETED LITHIUM RESOURCE IN NORTH PARADOX BASIN



**The Paradox Basin has the potential to contain a world class/size lithium brine resource.**

## Interpreted lithium resource

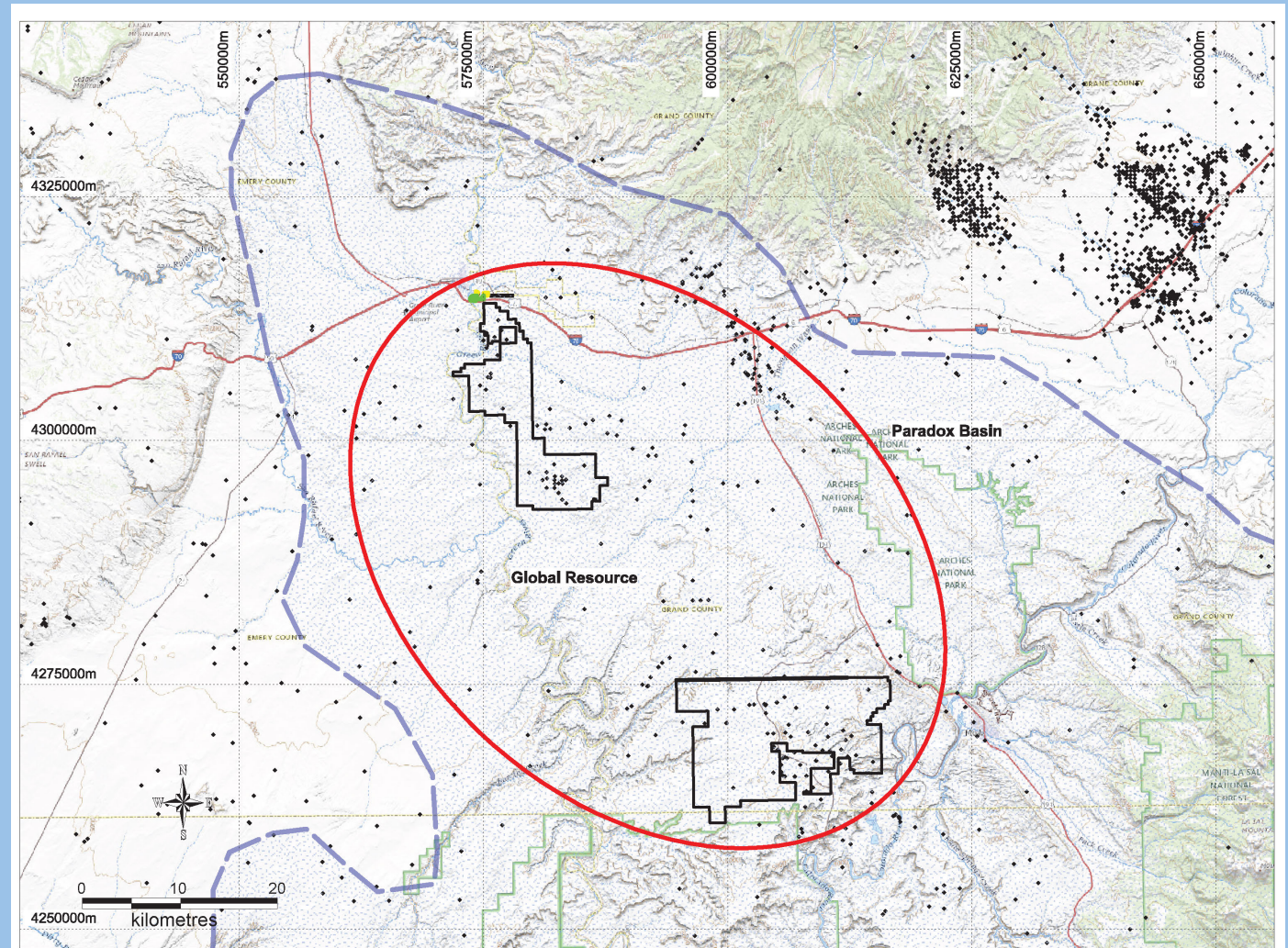
Can be interpreted due to the continuous nature of the brine containing units within the Paradox Basin (Estimate from 3D Geological Model\*).

## Possible total lithium rich brine volume

Estimated 56 Bt in the aquifers of the thick Mississippian units and 4 Paradox clastic horizons.

## Interpreted lithium resource

Potentially largest brine resource in the USA.

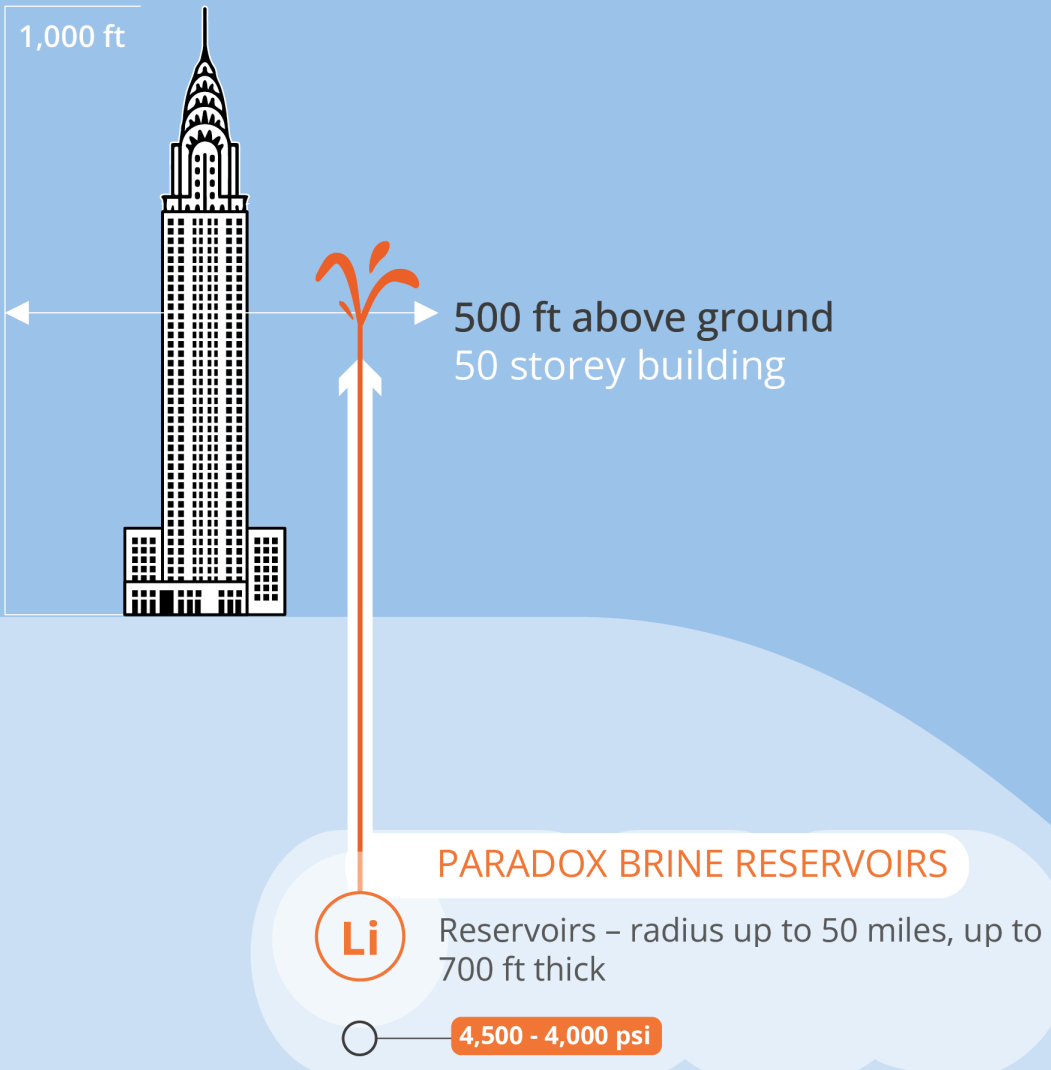


Plan illustrating the interpreted lithium resource surrounding Anson's two lithium brine projects. The interpreted lithium resource shows the potential lithium resource in the area but is constrained to the proximity to the project areas.

\* See 3D Geological Model announcement July 19, 2023



# "GEO-HYDRAULIC" NO PUMPING, LOW CARBON INTENSITY



Brine pressure could flow to 500 ft above ground level.



Brine pressure falls from 4500 psig to 4,000 psig shortly after commencing production and remain stable at that level the total modelled period or at least 5 years<sup>1</sup>.



No need to pump the brine to surface like Smackover. Lower construction and operating costs and emissions.



No need to reinject to reservoirs to maintain pressure.

1. See Groundwater Model Announcement Aug 7, 2023

# GREEN RIVER: INFRASTRUCTURE ADVANTAGE



## Proximity to township

Located in Green River **2 mi from the town center**, with access to town water and sewerage, and a community for employees.

## Expedited permitting

The property is a brownfield site due to the former uranium processing facility on adjacent land. **Brownfield sites can receive expedited permitting for mining and processing lithium.**

## Rail

Rail line runs along the boundary **2300 ft from the plant**, potential to restore siding on the property.

## Water

Anson has water rights from Green River that runs along the boundary **800 ft from plant**.

## Points of extraction

## Power

**Power lines** travel over the property.

## Gas

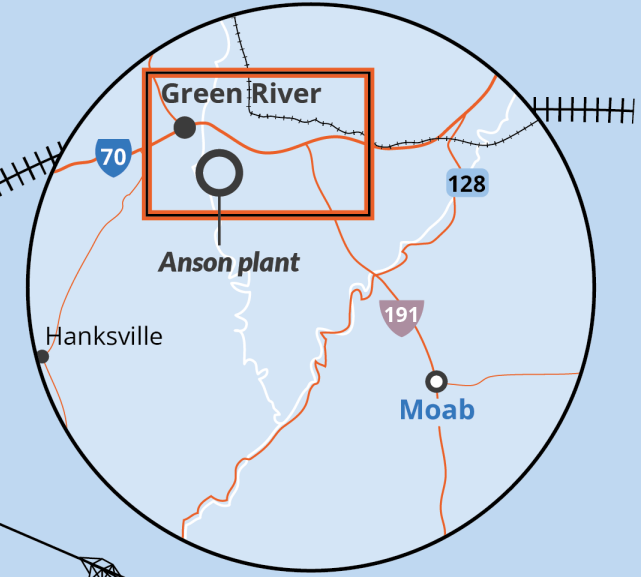
Major natural gas pipeline **1/4 mi from plant**.

## Road

Interstate 70 runs along boundary **350 ft from the plant**.

## Mineral Rights

Anson owns mineral rights to lithium on private property and **can extract and dispose 2300 ft from the plant**.



0.3 mi



# GREEN RIVER PROGRESS

## Green River drilling commenced

- Secured approvals for drilling, Notice of Intent (NOI) approved by the Utah Division of Oil, Gas and Mining (UDOGM), Minerals Division, and Permit to Drill (APD)
- Drilling is planned to a depth of ~3,292m (10,800ft) and will sample the Mississippian Units and Clastic Zones – both of which have been previously recorded to host supersaturated brines

## Sample demonstration plant on site

- Sample demonstration plant now on site
- brine will flow directly from new well to the demonstration plant which consists of both the Direct Lithium Extraction (DLE) and the downstream purification process. This will result in the plant being capable of operating 24/7 and producing a high purity lithium carbonate product.



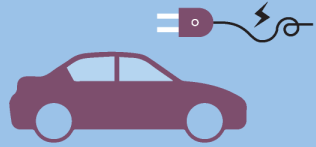
Photo showing the drilling rig at the Green River property

# PROJECT WORKSTREAMS UPDATE



## OFFTAKE

Negotiations continuing. Sample Demonstration Plant setup and producing samples



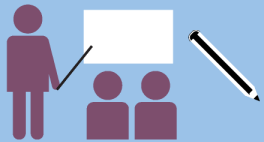
## APPROVALS

75% of required approvals submitted or approved



## FEED

Worley engaged for Front-end Engineering Design



## FINANCING

Strong Project Financials





# CLEAN LITHIUM: GAME CHANGING

## ANSON'S DIRECT LITHIUM EXTRACTION TECHNOLOGY IS GAME CHANGING



Lithium can now be produced with:



Less emissions



Less water



Less waste



Less chemicals

PRODUCTION OF **HIGHER PURITY** >99.95%  $\text{Li}_2\text{CO}_3^2$   
Longer life battery



### LESS WATER CONSUMPTION<sup>1</sup>

Hard rock mining



Brine evaporation



Direct lithium extraction



### LOW EMISSIONS<sup>1</sup>

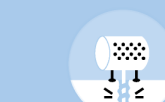
Hard rock mining



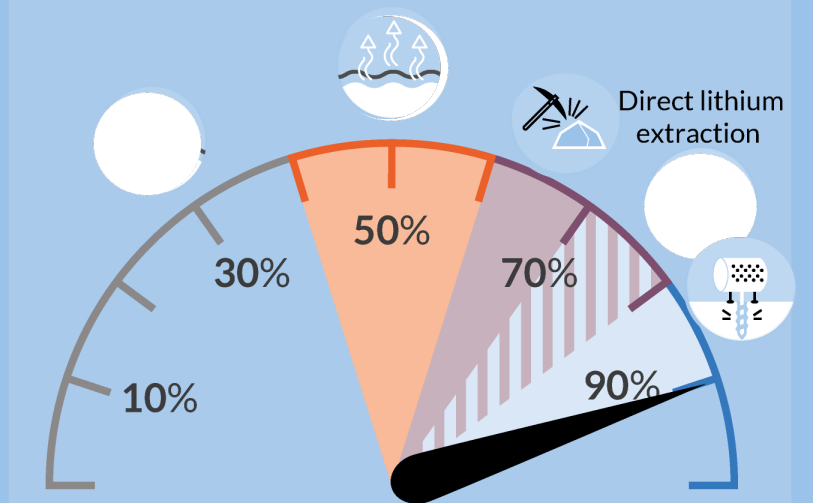
Brine evaporation



Direct lithium extraction



### Li HIGH LITHIUM RECOVERY RATES

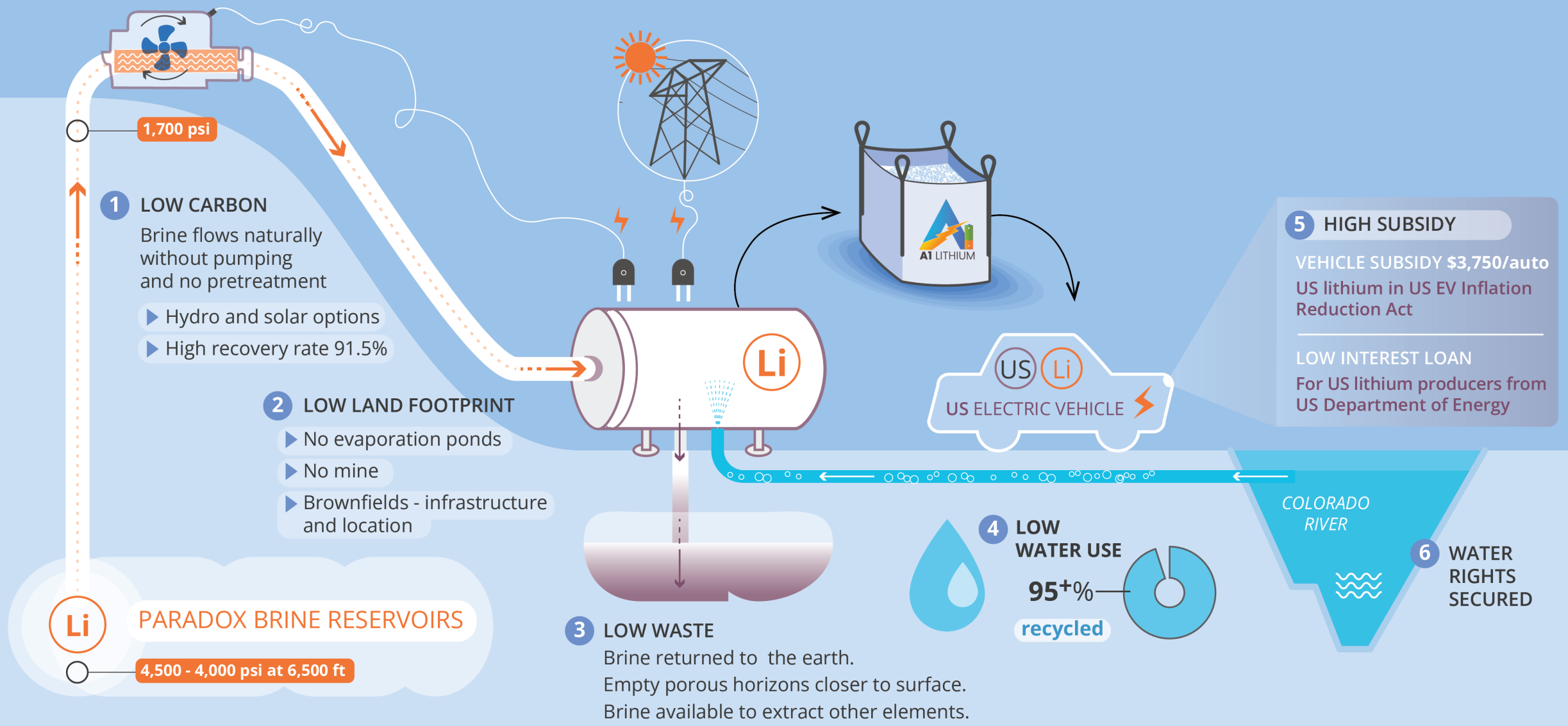


1- Goldman Sachs Direct Lithium Extraction: A potential game changing technology, April 2023

2- ASX Announcement September 9, 2021

# THE ANSON WAY:

## DIRECT LITHIUM EXTRACTION (DLE) LOW CARBON, WASTE AND WATER





# FOCUS OF INNOVATION PROGRAM

## RECYCLING - EFFICIENT WATER USE: ADDITIONAL ESG ATTRIBUTES



### GALLONS OF WATER CONSUMED

1 x 10 ears of Corn



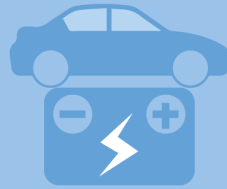
**370** gal

1 x Manufacturing T-Shirt



**712** gal

1 x EV Battery Produced from Anson's Lithium

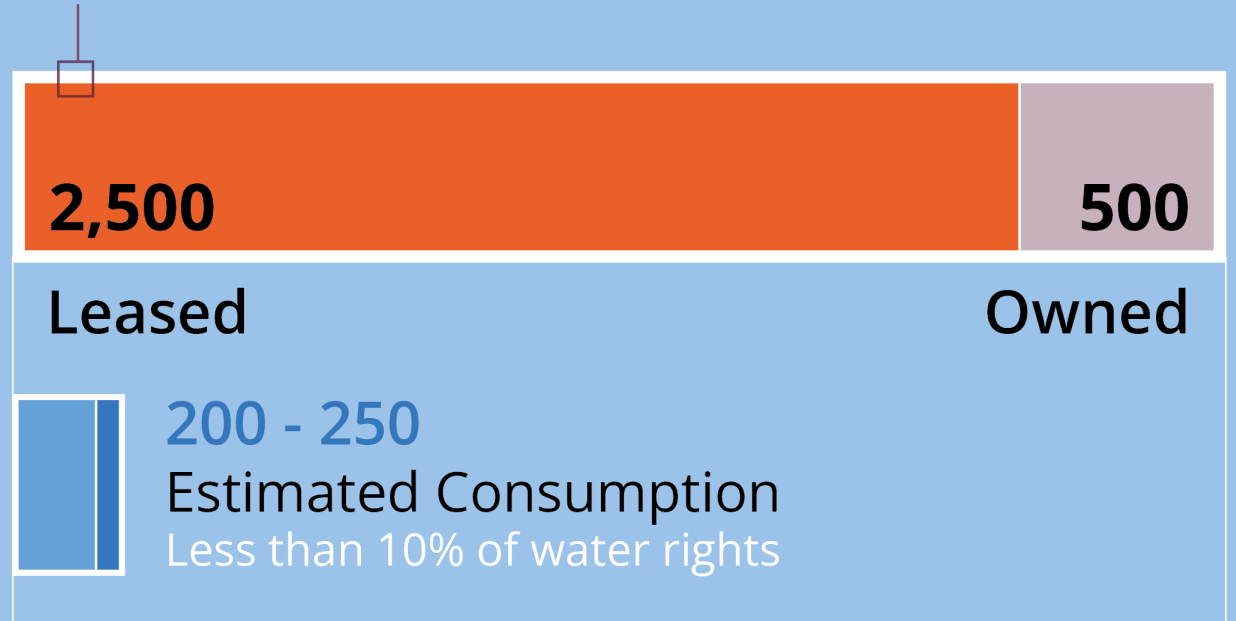


**318** gal

### ANSON WATER RIGHTS

**3,000**

ACRE FEET PER ANNUM



Consumption of water is based on the mass balance from DFS completed by Worley and Sunresin.

EV battery assumes 39kg Lithium/EV and Anson production of 10,000 tpa, Corn data <https://www.watercalculator.org/water-footprint-of-food-guide/>, T-shirt data, [https://www.waterfootprint.org/resources/multimediahub/Chapagain\\_et\\_al\\_2006\\_cotton\\_2.pdf](https://www.waterfootprint.org/resources/multimediahub/Chapagain_et_al_2006_cotton_2.pdf)

# ESG ENGAGEMENT STRATEGY

## ENVIRONMENTAL AND SOCIAL CREDENTIALS



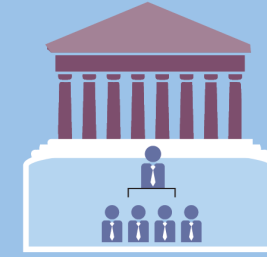
### ENVIRONMENTAL

- ▶ **Non-intrusive extraction method. No chemicals or open mining;**
- ▶ Small footprint using disturbed for extraction with infrastructure with brownfield location for lithium extraction.
- ▶ Very low water usage of 200 – 250 acre-feet pa even prior to recycling.
- ▶ Exceptional water, waste and pollution management including targeted water recycling of  $\geq 95\%$ .
- ▶ Spent Brine re-injected at – 4,000 feet, no impact to water table.
- ▶ No Interaction between water and brine due to impermeable rock type 6,000 ft thick.



### SOCIAL

- ▶ **Revitalization of regional areas & labor force. 500 jobs directly created during construction, over 55-80 in ongoing operations.**
- ▶ Contributor to the Economic, Infrastructure, Housing, Workforce Development, and Community Impact Study.
- ▶ Partnering with the local communities and universities and maximizing local content.



### GOVERNANCE

- ▶ **Commitment to ethical and transparent conduct.**
- ▶ 75% of government permits approved or in the final stages of consideration.
- ▶ Health and safety track record with no major incidents  $\geq 10$  years of work.
- ▶ Targeted establishment of Salt-Lake City Office head-office for ease of access.
- ▶ Contributing Revenue to all levels of government.

# FORECAST CONTRIBUTION TO THE COMMUNITY



## JOBS CONSTRUCTION

297 - 500



## JOBS PHASE 2 CONSTRUCTION

~150



## ONGOING WORKFORCE

55 - 80

## AVG. SALARY CONSTRUCTION

\$83,155



## AVG. SALARY ONGOING WORKFORCE

\$120,000



## CORPORATE HEAD OFFICE SLC WORKFORCE TARGET

~20-30

## AVG. FEDERAL TAX PHASE 2

\$110.3M PA



## AVG. TAX STATE PHASE 2

\$26.0M PA

## TOTAL STATE & FED TAX

US\$ 2.73 BN

## WATER USAGE PHASE 1

~250 ACRE FEET PA

## WATER USAGE PHASE 2

~300 ACRE FEET PA



## WATER RECOVERY TARGET OF

>95%

## ADDITIONAL UPSIDE VALUE

- ▶ Anson's World Class Mineral Resource supports continued production well beyond the modelled 23 year life of mine.
- ▶ Revitalizing America's Manufacturing Base with high quality, high paying jobs during construction and ongoing operations. Average Annual Salary Across Emery & Grand Counties Q1 2023 - \$47,918
- ▶ Detailed Community Engagement Strategy currently being developed to support local area and raise awareness of the project, including maximizing local content, engaging with local community organizations and Universities.





# THANK YOU

 US 347-417-3100

 [info@ansonresources.com](mailto:info@ansonresources.com)

 [www.ansonresources.com](http://www.ansonresources.com)

 660 Newport Center Drive, Newport Beach, CA

Anson Resources | ASX: ASN

# COMPETENT PERSON'S STATEMENT

Competent Person's Statement 1: The information in this presentation that relates to exploration results, exploration targets and geology is based on information compiled and/or reviewed by Mr Greg Knox, a member in good standing of the Australasian Institute of Mining and Metallurgy. Mr Knox is a geologist who has sufficient experience which is relevant to the style of mineralisation under consideration and to the activity being undertaken to qualify as a "Competent Person", as defined in the 2012 Edition of the Australasian Code for Reporting of Exploration Results, Exploration Targets, Mineral Resources and Ore Reserves and consents to the inclusion in this report of the matters based on information in the form and context in which they appear. Mr Knox is a director of Anson and a consultant to Anson.

Competent Person's Statement 2: The information contained in this presentation relating to Exploration Results and Mineral Resource Estimates has been prepared by Mr Richard Maddocks, MSc in Mineral Economics, BSc in Geology and Grad Dip in Applied Finance. Mr Maddocks is a Fellow of the Australasian Institute of Mining and Metallurgy with over 30 years of experience. Mr Maddocks has sufficient experience that is relevant to the style of mineralisation and type of deposit under consideration and to the activity being undertaken to qualify as a competent person as defined in the 2012 edition of the Australasian Code for Reporting of Exploration Results, Mineral Resources and Ore Reserves.

Mr Maddocks is an independent consultant to Anson Resources Ltd. Mr Maddocks consents to the inclusion in this presentation of this information in the form and context in which it appears. The information in this announcement is an accurate representation of the available data from exploration at the Paradox Lithium Project.

Information is extracted from reports entitled 'Anson Further De-risks Paradox Brine Project' created 11 May 2020, 'Anson Granted Additional Paradox Brine Project Claims' created 30 March 2021, 'Anson Significantly Increases Paradox Exploration Area' created 6 April 2021 'Paradox Brine Stage 1 Sodium Bromide/Lithium Updated PEA' created 1 September 2021, 'Test on Historic Diamond Core to Fast Track Resource Upgrade' created 6 July 2022, 'Mississippian Unit at LC2 delivers 25% Increase in Lithium' created 11 July 2022, 'Further 87% Increase in Li Grades of Mississippian Units' created 27 July 2022, 'Further Increase in Lithium Grades at Paradox Project' created 4 August 2022, 'Anson Reports Major Resource Upgrade at Paradox' created 22 August 2022, 'Paradox Lithium Project DFS Confirms Outstanding Economics' created 8 September 2022, 'Anson Delivers 1Mt LCE Mineral Resource at Paradox Lithium Project' created 2 November 2022, 'Western Strategy Resource Expansion Drilling to Commence' created 25 January 2023, and 'Exploration Target Confirmed at Green River Lithium Project' created 15 February 2023, all are available to view on the ASX website under the ticker code ASN.

The Group confirms that it is not aware of any new information or data that materially affects the information included in the original market announcement and, in the case of estimates of Mineral Resources or Ore Reserves, that all material assumptions and technical parameters underpinning the estimates in the relevant market announcement continue to apply and have not materially changed. The Group confirms that the form and context in which the Competent Person's findings are presented have not been materially modified from the original market announcement.