



An Australian Exploration Company **Targeting Copper, Critical Metals & Gold**

Webinar Presentation – West Arunta In Focus

February 2024

Disclaimer



This presentation and any accompanying verbal presentation (together the Presentation) and confidential information has been prepared by Rincon Resources Limited (Rincon or the Company) and approved by the Board of the Company. The information contained in the Presentation (Information) is a summary only and should be read in conjunction with any oral briefing and all other documents provided to you by the Company. The Information is current as the date of this report and the Company does not undertake to provide any additional or updated information, whether as a result of new information, future events or results or otherwise. By receiving the Presentation, you acknowledge and represent to the Company that you have read, understood and accepted the terms of this disclaimer.

The Company has prepared the Presentation based on information available to it at the time of preparation. No representation or warranty, express or implied, is made as to the currency, accuracy, reliability, completeness or fairness of the information, opinions and conclusions contained in this Presentation. Neither Rincon, its related bodies corporate, shareholders or affiliates, nor any of their respective officers, directors, employees, affiliates, agents or advisers (Agents) guarantee or make any representations or warranties, express or implied, as to or take responsibility for, the currency, accuracy, reliability, completeness or fairness of the information, opinions and conclusions contained in this Presentation. Rincon does not represent or warrant that this Presentation is complete or that it contains all material information about Rincon or which a prospective investor or purchaser may require in evaluating a possible investment in Rincon or acquisition of shares. To the maximum extent permitted by law, Rincon and its Agents expressly disclaim any and all liability, including, without limitation, any liability arising out of fault or negligence, for any loss arising from the use of information contained in this Presentation, or otherwise arising in connection with it.

Any forward-looking statements in this Presentation, including projections, forecasts and estimates, are provided as a general guide only and should not be relied on as an indication or guarantee of future performance and involve known and unknown risks, uncertainties, assumptions, contingencies and other important factors, many of which are outside the control of Rincon and which are subject to change without notice and could cause the actual results, performance or achievements of Rincon to be materially different from the future results, performance or achievements expressed or implied by such statements. Past performance is not necessarily a guide to future performance and recipients of this Presentation are cautioned not to place undue reliance on such forward-looking statements.

The information contained in this Presentation is for information purposes only, does not constitute investment or financial product advice (nor taxation, accounting or legal advice) and is not intended to be used as the basis for making an investment decision. In providing this Presentation, Rincon has not considered the objectives, financial position or needs of any particular recipients. Before making an investment decision prospective investors should consider the appropriateness of the information in this Presentation having regard to their own objectives, financial situation and needs, and seek legal, taxation and financial advice appropriate to their jurisdiction and circumstances.

This Presentation is not a prospectus, product disclosure statement or other offering document under Australian law or any other law (and will not be lodged with the Australian Securities and Investments Commission or any other foreign regulator) and is not, and does not constitute, an invitation or offer of securities for subscription, purchase or sale in any jurisdiction. In particular, this Presentation does not constitute an invitation or offer of securities for subscription, purchase or sale in the United States or any other jurisdiction in which such an offer would be illegal. The securities referred to in this Presentation have not been, and will not be, registered under the U.S. Securities Act of 1933 as amended or the securities laws of any state or other jurisdiction of the United States and may not be offered or sold, directly or indirectly in the United States.

The information in this Presentation is strictly confidential. It may not be disclosed, reproduced, disseminated, quoted or referred to, in whole or in part, without the express consent of Rincon.

The Company confirms in this public report that it is not aware of any new information or data that materially affects the information included in the relevant market announcements and, in the case of estimates of mineral resources or ore reserves, that all material assumptions and technical parameters underpinning the estimates in the relevant market announcement continue to apply and have not materially changed.

Competent Person's Statement

The information in this report that relates to Exploration Results is based on information compiled by Mr Gary Harvey. Mr Harvey is a member of the AIG and Managing Director of the Company. Mr Harvey has sufficient experience that is relevant to the style of mineralisation and type of deposit under consideration and to the activity which they are undertaking to qualify as a Competent Person as defined in the 2012 Edition of the Australasian Code for Reporting of Exploration Results, Mineral Resources and Ore Reserves. Mr Harvey consents to the inclusion in this report of the matters based on this information in the form and context in which it appears.

Company Snapshot ¹

Rincon Resources (ASX:RCR) is an Australian Exploration Company with interests in three highly prospective copper, critical metal & gold projects in Western Australia.

221.15m

Shares on Issue

40.5m

Unlisted Options

\$0.043

Share Price

\$9.51m

Market Capitalisation

\$2.49m

Cash on Hand

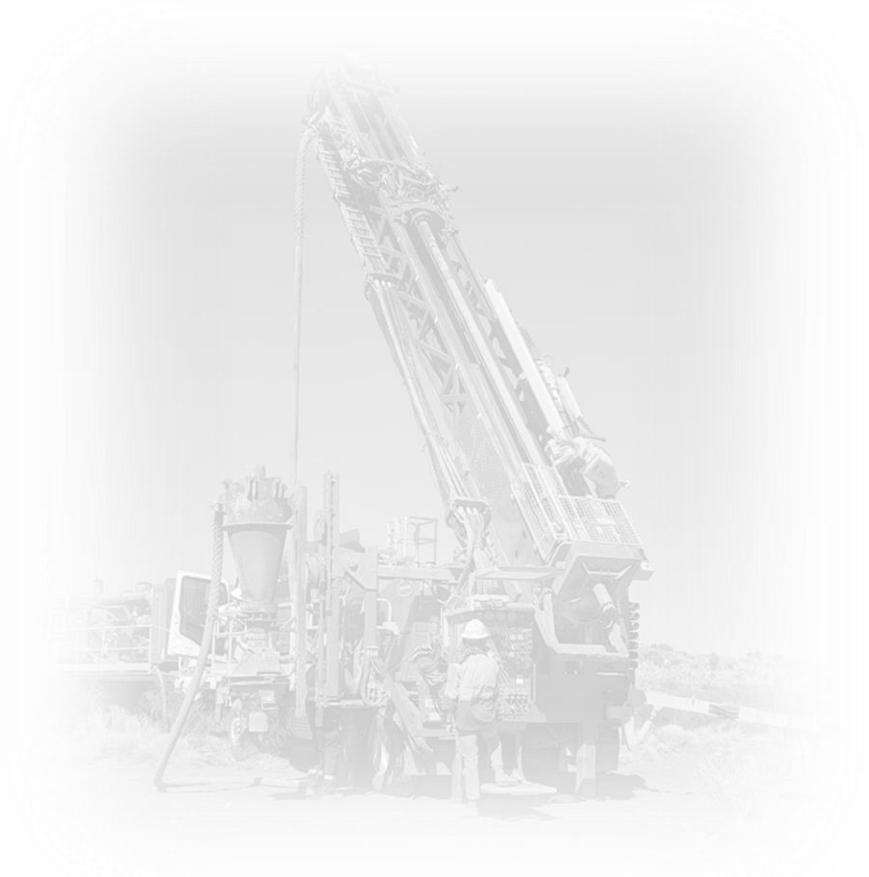
22 January 2024

\$7.02m

Enterprise Value

Major Shareholders (at 22/01/2024)

Board & Management	3.54%
Top 20 Shareholders	35.53%



Investment Highlights



Diversified asset portfolio across **copper, critical metals and gold**



Exploring in the Tier 1 jurisdiction of **Western Australia**



Diamond and RC drilling programs at **West Arunta** starting **28 February 2024**



Geophysics & rock-chip samplings programs throughout **H1 2024** at **West Arunta**



Strong cash position to accelerate exploration at **West Arunta**

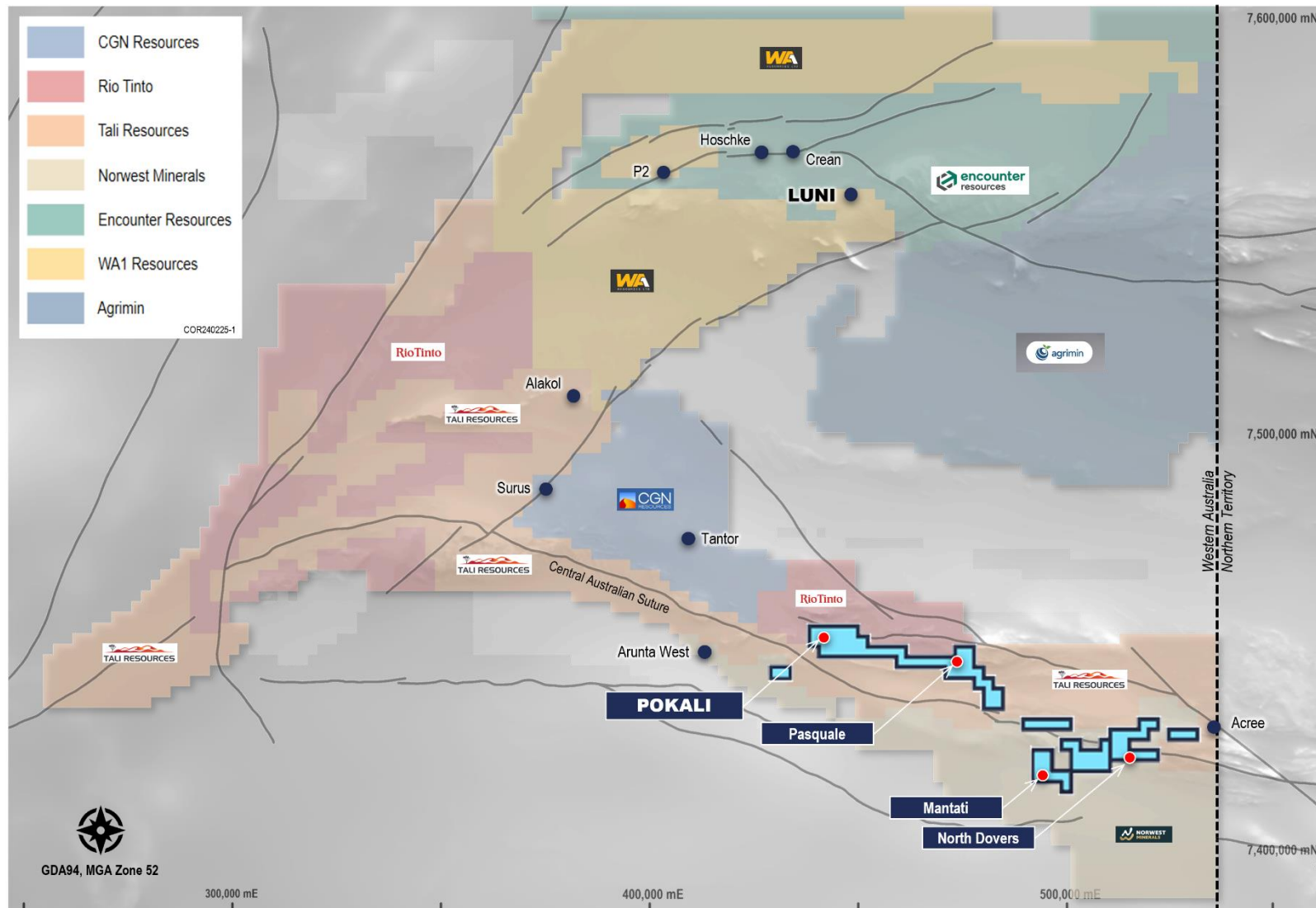


Strong news flow through **H1 2024**



West Arunta Project

Exploring the rich potential of copper and rare earth elements



West Arunta Region

- Emerging **critical minerals** province: **‘Copper, REEs , Niobium , Nickel’**
- **Access routes** to Alice Springs, Port Hedland and Halls Creek
- Prominent players: Rio Tinto, Tali, WA1, Encounter, CGN & **Rincon**
- Highlighted by Luni Nb discovery

Rincon

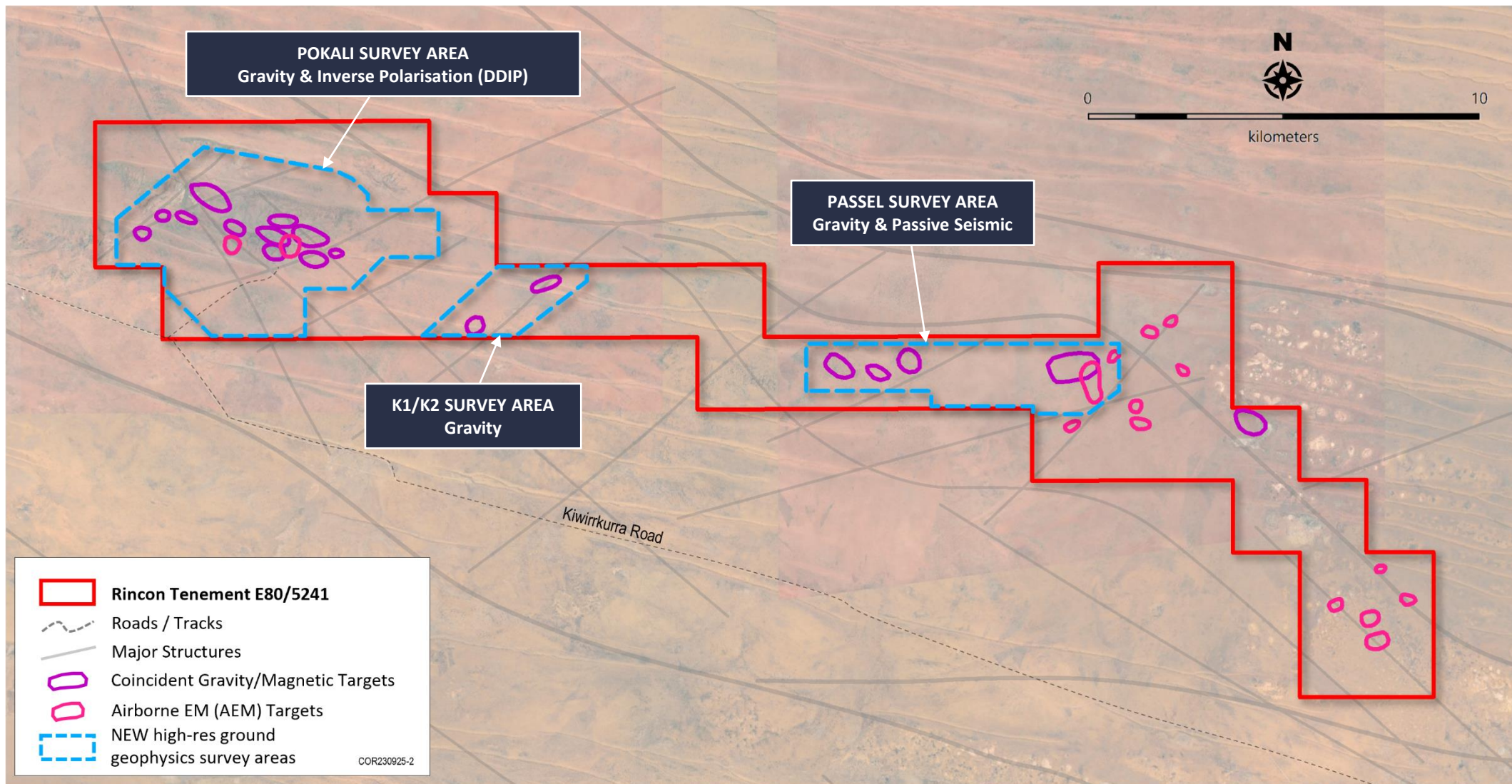
- Landholding over **260km²** and growing
- **Confirmed** IOCG system
- Potential for carbonatite **REE system**
- **Multiple** IOCG and carbonatite **targets**
- Drilling programs start **28th February 2024**

West Arunta Project

Multiple IOCG / Carbonatite Targets

- Base map
- Structural interpretation
- Geophysics anomaly target clusters
- New high-resolution ground geophysics survey areas

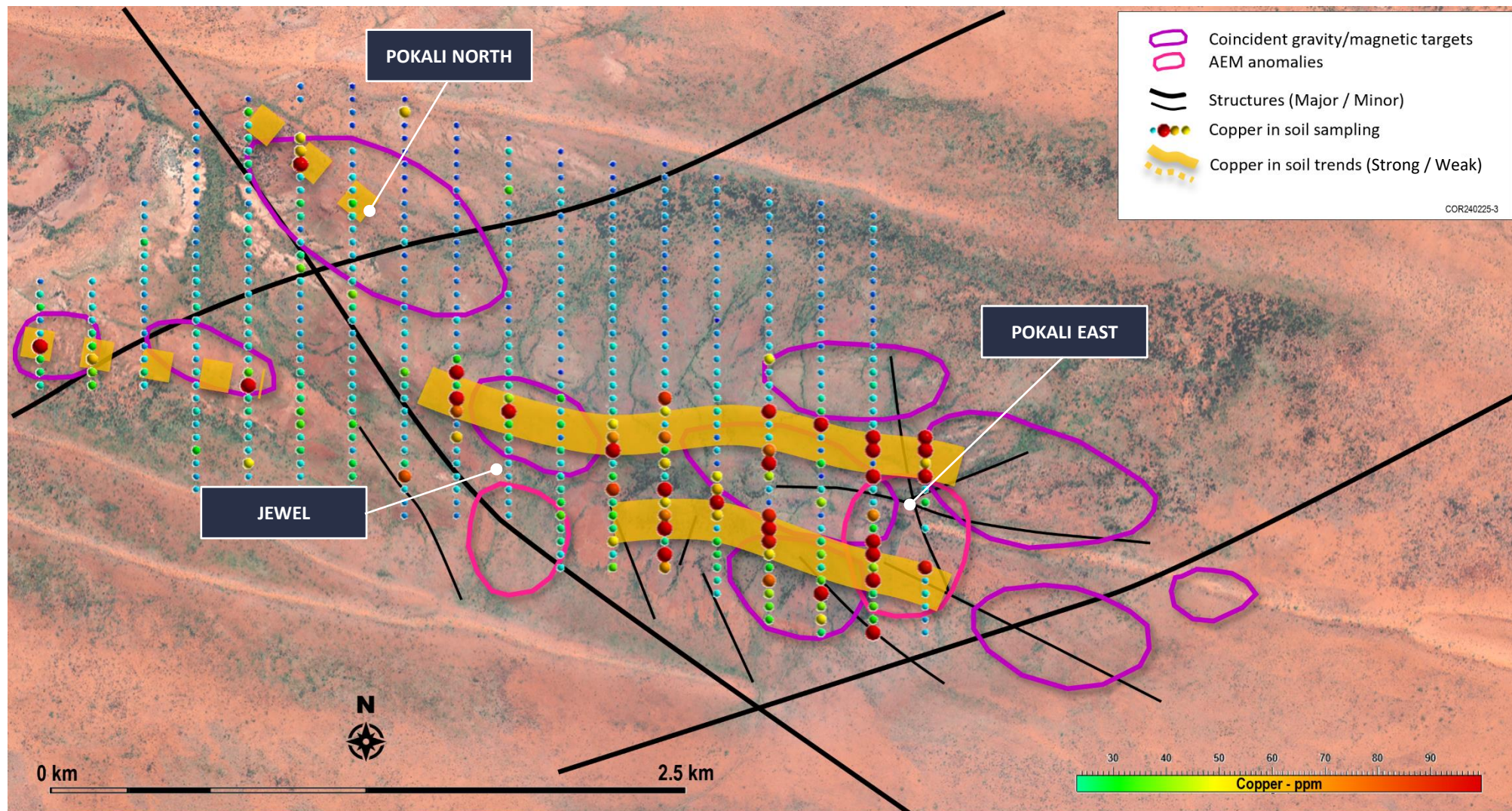
✓ Geophysics surveys commence in 1-2 weeks



West Arunta Project

A Deep Dive into the Pokali Prospect

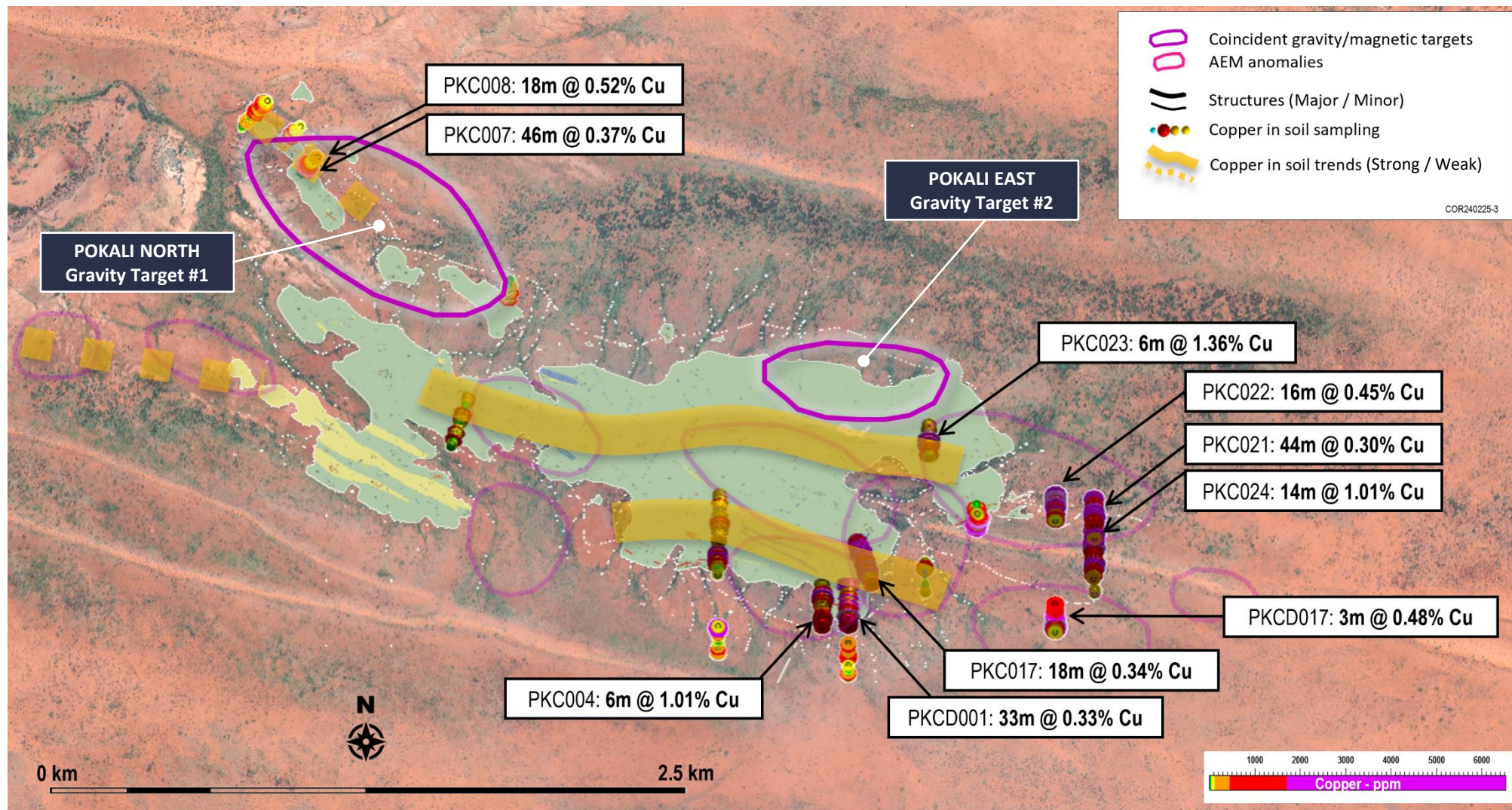
- Geophysics target areas
- Structural Interpretation
- Copper anomalism in soil sampling²
- Copper in soil trends



West Arunta Project

A Deep Dive into the Pokali Prospect

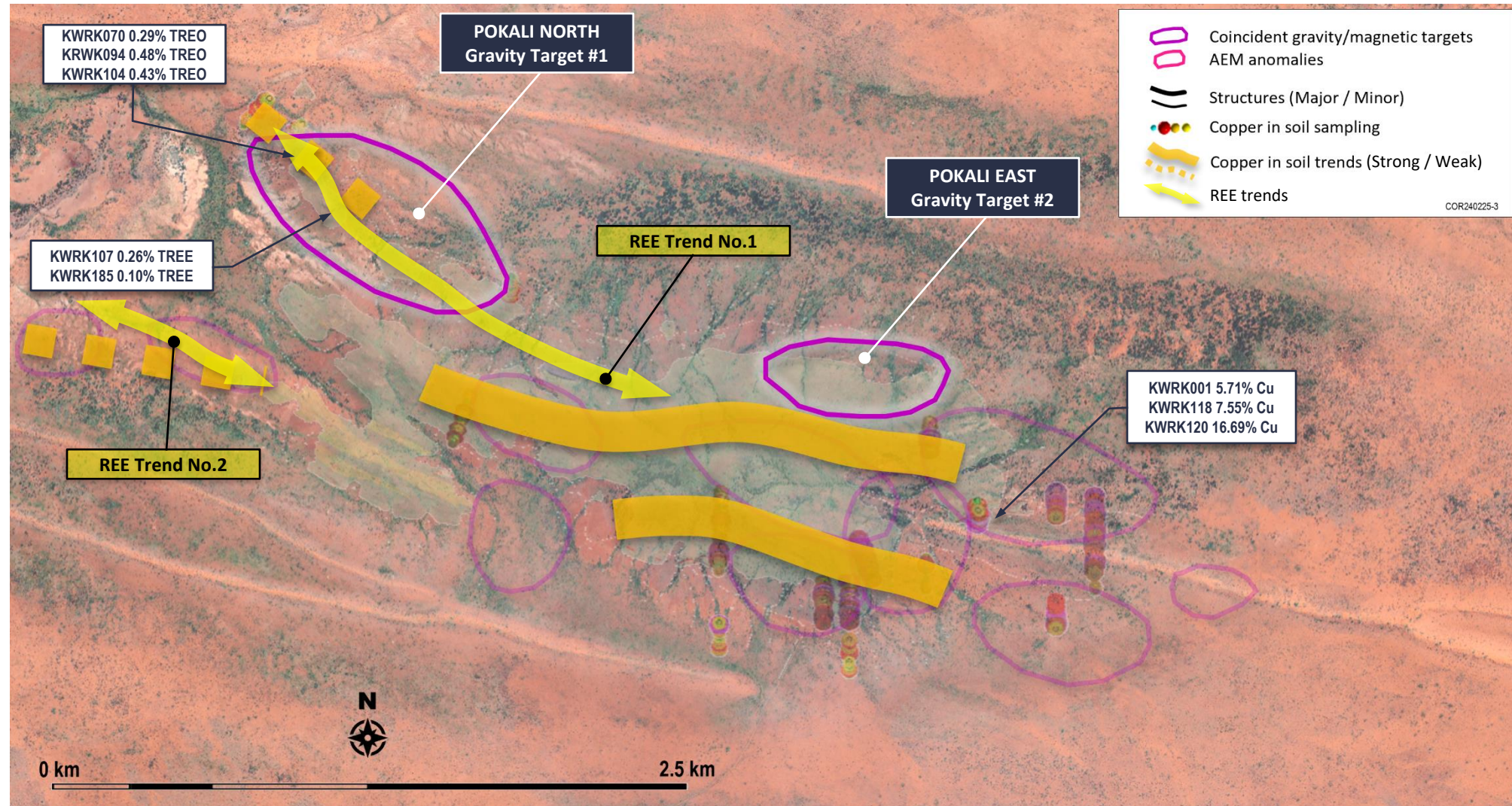
- Geophysics target areas
- Structural Interpretation
- Copper anomalism in soil sampling²
- Copper in soil trends
- Historic drilling³ copper intercepts ($\geq 0.30\%$ Cu)



West Arunta Project

A Deep Dive into the Pokali Prospect

- Geophysics target areas
- Structural Interpretation
- Copper anomalism in soil sampling²
- Copper in soil trends
- Historic drilling copper intercepts ($\geq 0.30\%$ Cu)
- Significant Cu/REE rock-chip results, REE trends

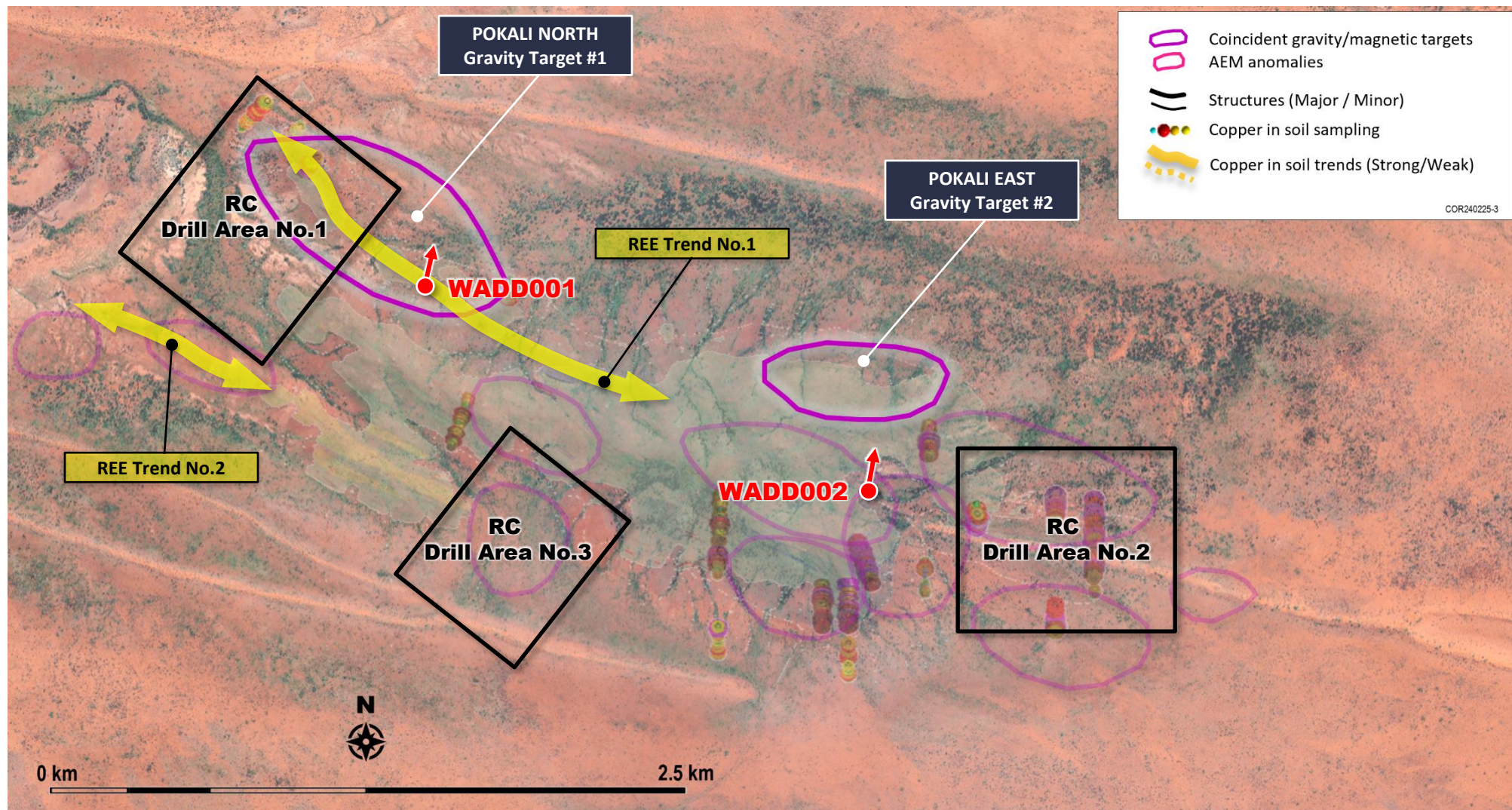


West Arunta Project

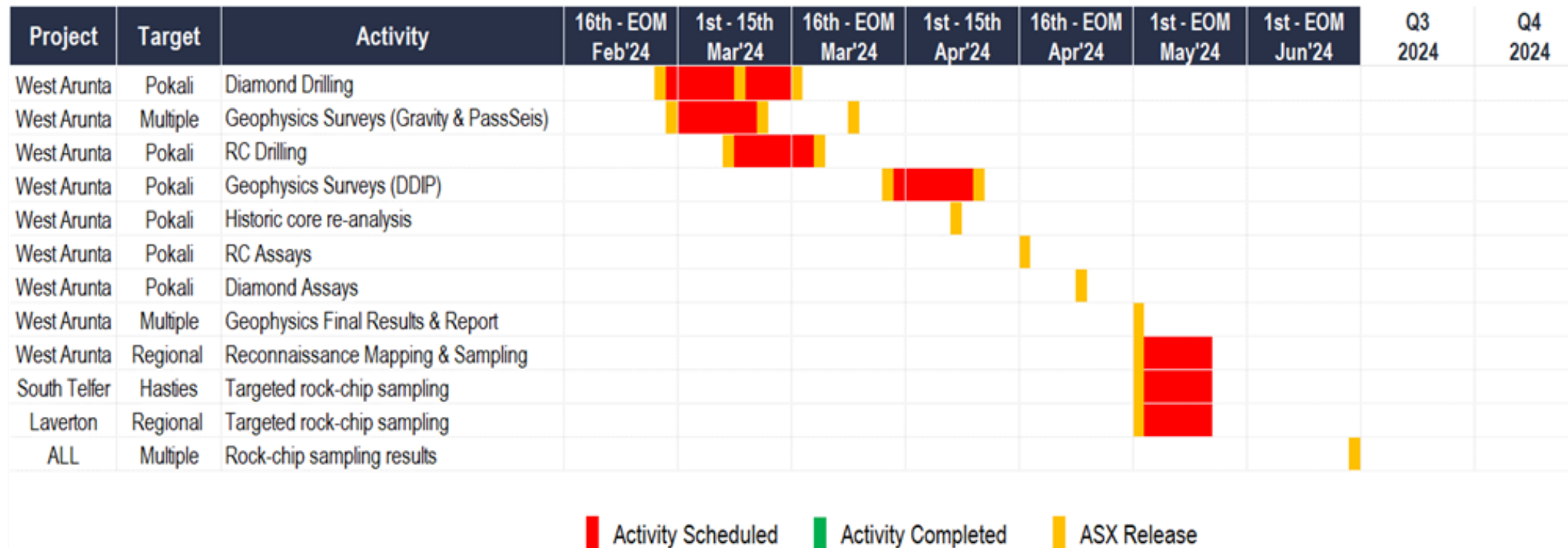
A Deep Dive into the Pokali Prospect

- Geophysics target areas
- Structural Interpretation
- Copper anomalism in soil sampling²
- Copper in soil trends
- Historic drilling copper intercepts ($\geq 0.30\%$ Cu)
- Significant Cu/REE rock-chip results, REE trends
- Drilling Program

- ✓ 2 diamond holes, minimum 1,000m (WADD001 & WADD002)
- ✓ 2,000m RC (~8-15 holes)



Work Program Timeline





Gary Harvey

Managing Director

gary.harvey@rinconresources.com.au

rinconresources.com.au

ASX:RCR