



**Belt scale greenfields discovery opportunity**

» **Exciting bedrock gold zone identified at Bellagio**

» **First ever drill test of copper-gold target at Atlantis**

Investor Presentation  
March 2024

Dan Power  
Managing Director

**ASX: KNB**



# Disclaimer

## General information only

This presentation contains general background information and summary information about Koonenberry Gold Limited (ACN 619 137 576) ("Koonenberry") and its activities as at the date of this presentation. None of the members of Koonenberry or their or Koonenberry's respective advisors, affiliates, related bodies corporate, directors, officers, partners, consultants, employees and agents ("Other Persons") have authorised, permitted or caused the issue, submission, dispatch or provision of this presentation and none of them makes or purports to make any statement in this presentation. To the maximum extent permitted by law, Koonenberry and the Other Persons expressly exclude and disclaim all liability, including without limitation for fault or negligence on the part of any person, or for any expenses, losses, damages or costs incurred as a result of the use of this presentation or its contents and the information in this presentation being inaccurate or incomplete in any way for any reasons, whether by negligence or otherwise.

To the maximum extent permitted by law, each of Koonenberry and the Other Persons make no representation or warranty, express or implied, as to the currency, accuracy, reliability or completeness of all or any part of all or any part of this document, or any constituent or associated presentation, information or material, or the accuracy, likelihood of achievement or reasonableness of any forecasts, prospects of returns contained in or implied by, the information in this presentation or any part of it. Except as required by applicable law or regulation, neither Koonenberry nor the Other Persons have any obligation to provide any additional or updated information, whether as a result of new information, future events or results or otherwise.

## Forward looking statements

These materials include forward looking statements. Often, but not always, forward looking statements can be identified by the use of forward looking words such as "may", "will", "expect", "intend", "plan", "estimate", "anticipate", "continue", "outlook" and "guidance" or other similar words and may include, without limitation, statements regarding plans, strategies and objectives of management, anticipated production or construction commencement dates and expected costs or production outputs.

Forward looking statements are based on Koonenberry and its Management's good faith assumptions relating to the financial, market, regulatory and other relevant environments that will exist and affect Koonenberry's business and operations in future. Koonenberry does not give any assurance that the assumptions on which forward looking statements are based will prove to be correct, or that Koonenberry's business or operations will not be affected in any material manner by these or other factors not foreseen or foreseeable by Koonenberry or Management or beyond Koonenberry's control. Although Koonenberry attempts and has attempted to identify factors that would cause actual actions, events or results to differ materially from those disclosed in forward looking statements, there may be other factors that could cause actual results, performance, achievements or events not to be as anticipated, estimated or intended, and many events are beyond the reasonable control of Koonenberry. Accordingly, readers are cautioned not to place undue reliance on forward looking statements. Forward looking statements in these materials speak only at the date of issue. Subject to any continuing obligations under applicable law in providing this information Koonenberry does not undertake any obligation to publicly update or revise any of the forward looking statements or to advise of any changes in events, conditions or circumstances on which any such statement is based.

## Competent Persons Statement

The information in this presentation that relates to previous Exploration Results was reported in accordance with the JORC Code and ASX Listing Rules in the Company's ASX announcements set out in the slide labelled "References". The Company confirms that it is not aware of any new information or data that materially affects the information included in the relevant original market announcements. The Company confirms that the information and context in which the Competent Person's findings are presented have not been materially modified from the original market announcements.

No new exploration results are reported in this presentation.

This announcement has been approved for release by the Board of Koonenberry Gold Ltd.

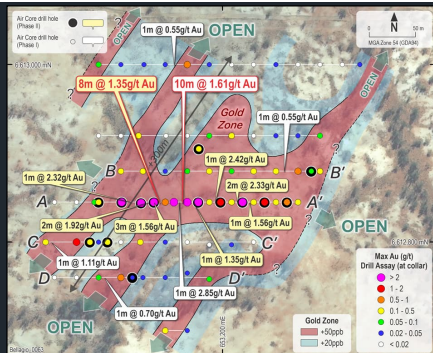
# Investment Highlights » Accelerating Discovery with Drilling

## True **belt scale** discovery opportunity

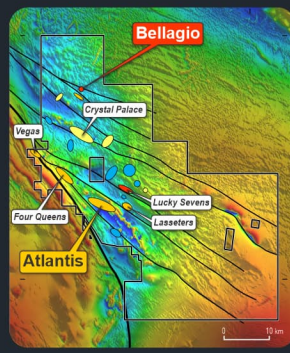
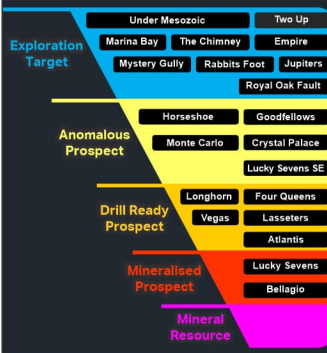
- Extension of Western Vic. Goldfields
- Huge 2,060km<sup>2</sup> of granted EL's
- Low exploration maturity, underexplored
- Multi Million oz gold potential

## Bellagio Au Prospect » **39.4g/t outcrop** <sup>(1)</sup>

- Widespread 250x300m bedrock gold zone identified in Air Core drilling
- 10m @ 1.61g/t Au from 18m inc. 1m @ 4.47g/t from 24m <sup>(2)</sup>
- OPEN in all directions
- OPEN along +20km Royal Oak Fault
- Further drilling planned & approved



## Discovering Gold (+Cu) in an Emerging Province

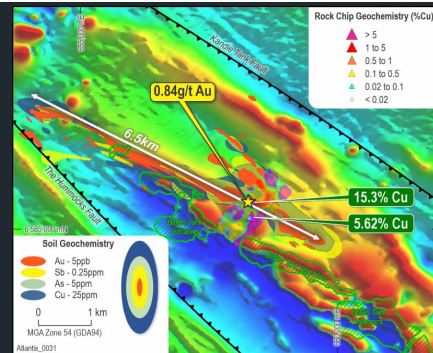


## Huge upside for investors

- Low Market Cap. Leveraged to success
- Focussed strategy
- High impact work programs
- Consistent news flow next 6 months

## Atlantis Cu-Au Prospect » **15.3% Cu outcrop** <sup>(3)</sup>

- 0.84g/t Au, 16,000ppm As, 0.34% Pb
- 6.5km x 900m Au-Cu-As-Sb-Pb-Zn soils
- 3 conductive EM plates modelled
- Doubly-plunging mafic dome similar to +5Moz Stawell gold mine
- First ever drilling planned & approved



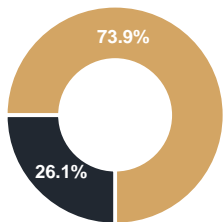
# Corporate Overview

## Undervalued » Highly leveraged to exploration success

| Corporate Summary                               | ASX: KNB | Pro-forma - April 24 |
|---|----------|----------------------|
| Current Shares on Issue                         | 137.7M   |                      |
| Shares to be issued to raise a further \$2.1M:- |          |                      |
| - Rights Issue (underwritten)                   |          | 118.1M               |
| - Placement (inc. Director participation)       |          | 32.0M                |
| Pro-forma Shares on Issue                       |          | 287.8M *             |
| Share Price (18/03/2024)                        | \$0.028  |                      |
| Market Capitalisation                           | \$3.8M   | \$8.0M               |
| Top 20 Shareholder holding                      | 73.9%    |                      |
| Board and Management holding                    | 9.9%     |                      |
| Cash (31 Dec 2023)                              | \$0.63M  |                      |
| Enterprise Value                                | \$2.3M   | \$5.8M **            |

Top 20

Other



Cornerstone Investor



Lion Selection Group

| Board and Management  | Experienced Team – Focused on Discovery  |
|---|--|
|  <p><b>Paul Harris</b> (BCom, M.MinEng, GAICD)<br/>Chairman and Non-Executive Director</p> | <ul style="list-style-type: none"> <li>Experienced professional with +25 years in financial markets and investment banking including Citibank, Bankers Trust and Merrill Lynch</li> <li>Formerly Head of Metals and Mining at Citi.</li> <li>Currently Non-Exec Chair of Highfield Resources and Aeon Metals</li> </ul>  |
|  <p><b>Dan Power</b> (BSc Hons, MSc Econ. Geol, MAICD, AIG, SEG)<br/>Managing Director</p> | <ul style="list-style-type: none"> <li>Geologist with +25 years' experience in exploration, project generation, project evaluation and management in Australia, China, SE Asia, SW Pacific and Mongolia</li> <li>Formerly Country Manager for Newmont and Executive Director for Titeline Mongolia</li> </ul>  |
|  <p><b>Anthony McIntosh</b> (BCom, GAICD)<br/>Non-Executive Director</p>                   | <ul style="list-style-type: none"> <li>Extensive experience in investment marketing, investor relations and strategic planning</li> <li>Non-Executive Director of ASX-listed: Strategic Energy Resources and K-Tig as well as several unlisted and not-for-profit organisations</li> </ul>   |
|  <p><b>George Rogers</b> (BIB)<br/>Non-Executive Director</p>                              | <ul style="list-style-type: none"> <li>Extensive experience in capital and commodity markets, investor relations and strategic planning as well as corporate strategy, M&amp;A and capital markets</li> <li>Formerly Managing Director of KNB. Co-founder and Director of SRG Partners</li> </ul>  |
|  <p><b>Brett Tucker</b> (BCom)<br/>Company Secretary</p>                                   | <ul style="list-style-type: none"> <li>Diverse accounting and commercial experience</li> <li>Has acted as CFO and Company Secretary to a range of ASX listed and private companies. Involved in numerous public corporate acquisitions and transactions</li> </ul>   |
|  <p><b>Paul Wittwer</b> (BSc Hons, AIG, AusIMM, SEG)<br/>Exploration Manager</p>           | <ul style="list-style-type: none"> <li>Geologist with +19years' Australian and international experience in orogenic and epithermal gold systems as well as in silver and copper</li> <li>Formerly Exploration Manager for Thor Mining and Southern Gold covering greenfields, near mine exploration, mine geology, resource modelling and development</li> </ul> |

- Experienced board and management team
- Tight capital structure
- Focussed strategy
- High impact work programs
- Undervalued » Highly leveraged to exploration success

\* Company will issue ~94.0 million option (ex 4 cents), subject to shareholder approval in April 24.

Currently there are ~6.6 performance rights on issue, with various conversion milestones

\*\* Inc total funds raised in March and April 24 of \$2.35M (less costs)



# Koonenberry Belt

## Highly Prospective Geological Setting

### Belt Scale Discovery Opportunity - 100% owned

- District Scale land package (2,060km<sup>2</sup>) - early mover advantage
- 160km NE of Broken Hill, 300km by road - remote, but easy access

### Extension of Western Victorian Goldfields

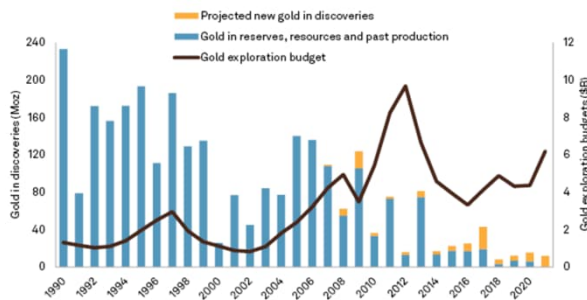
- MMoz orogenic gold potential +5Moz Stawell Gold Mine
- Similar timing of deformation, metamorphism and mineralisation <sup>(1)</sup>

### Low Exploration Maturity

- Historically underexplored "frontier"
  - Exploration expenditure FY21: Vic 149.3M1 <sup>(2)</sup>; KNB Belt <5M (est.)
  - Exploration drill metres FY21: Vic 100's km (est.); KNB Belt <5km (est.)

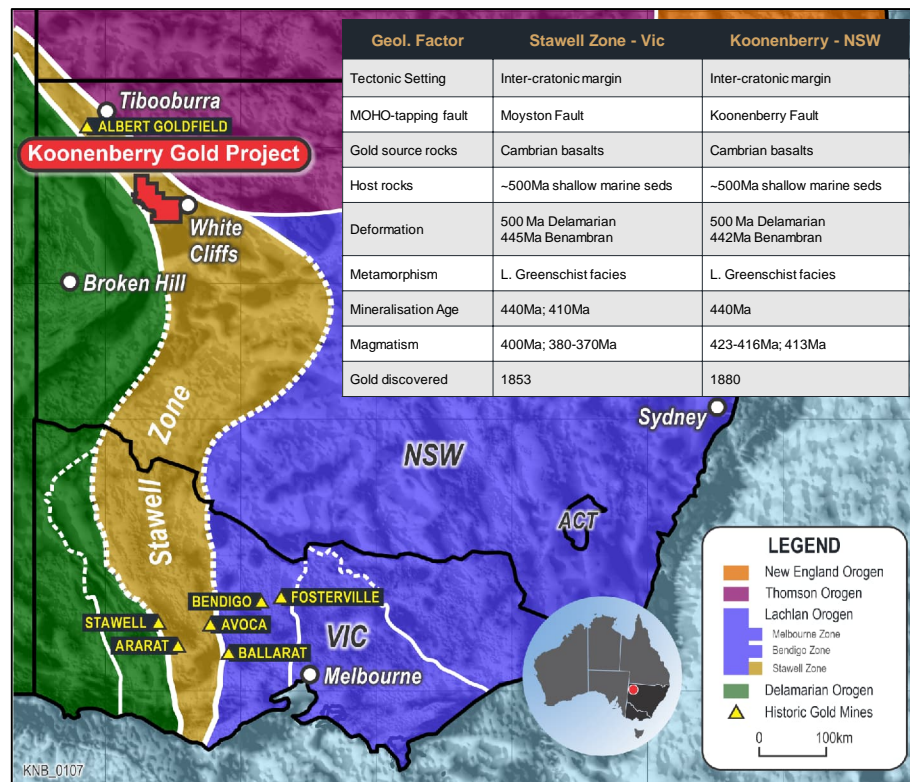
### Discovery Context

- "Lack of new major discoveries over the past decade results from companies focusing on advanced-stage assets and known deposits rather than searching for new greenfield discoveries" <sup>(3)</sup>
- Majority of significant new discoveries come from testing new ideas:



Data as of April 12, 2022  
Source: S&P Global Market Intelligence

- Hemi (2019)  
De Grey Mining;  
Pilbara Craton;  
Remote, Lack scale,  
"no gold" etc  
➢ 6.8Moz Au <sup>(3)</sup>
- Gruyere (2013)  
Gold Road Resources;  
Yamana Belt;  
Remote, Under cover,  
"wrong age" etc  
➢ 7.5Moz Au <sup>(3)</sup>



Notes: 1. Dreen, N.G.; 2. Earth Resources Regulation Annual Statistical Report, FY2020-21, p4 – Gold only; 3. S&P Global Market Intelligence, 12/04/2022

# Koonenberry Project

## Strategic Holding in Emerging Province

### First Mover Advantage - 2,060km<sup>2</sup>

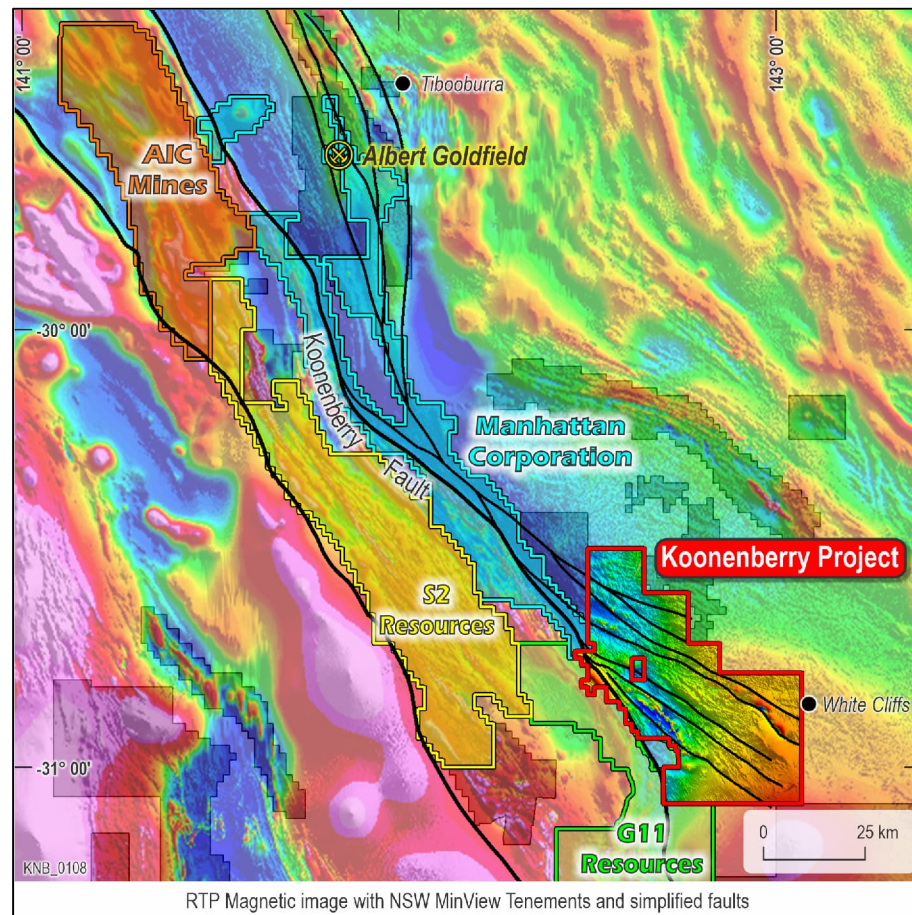
- Have seen a “land grab” with some early exploration successes
  - A1M (4,283km<sup>2</sup>), S2R (2,713km<sup>2</sup>) , G11 (3,300km<sup>2</sup>)
  - MHC (63m @1.3g/t Au; 8m @40.5g/t Au) <sup>(1)</sup>

### Highly Prospective geological setting and structural framework

- Source rocks for gold - Mafic basement rocks
  - Thrust up from depth and emplaced within sedimentary sequence
  - Identical to Victorian Goldfields
- Fluid transport pathway for gold - First order Koonenberry Fault
  - Deep, crustal scale fluid conduit
  - Major fault bend
  - Control ~45km strike
- Trap sites for gold - Second order fault splays
  - Important structural plumbing and trap sites
  - Multiple thrust faults and associated folds
  - Dilational sites, folds, jogs
  - Control ~350km strike

### Strong Stakeholder and Community Support

- Genuine and appropriate commitment to ESG
  - Land access to key areas being unlocked for the first time



# Koonenberry Project

## Pipeline of Discovery Opportunities

### 20+ Targets defined

- Pipeline of quality Prospects and Exploration Targets
- Gold in soil defined over a 34km (+5ppb Au)
- Gold nuggets observed over 200km<sup>2</sup>

### Anomalous & Drill Ready Prospects

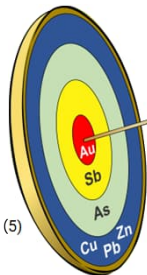
- Atlantis: 6.5km x 900m Au-Cu-Sb-As soils
  - 15.3% Cu, 0.84g/t Au rock chips <sup>(1)</sup>
- Four Queens: 4.6km x 750m Au soils
  - 13.95g/t Au, 665ppm As lag <sup>(4)</sup>
- Vegas: 2km x 400m Au soils
- Two Up: 8.71g/t Au rock chip <sup>(1)</sup>
- Crystal Palace: 4km x 100m Au soils

### Mineralised Prospects

- Bellagio: 10m @ 1.61g/t Au <sup>(3)</sup>, 39.4g/t Au rockchip <sup>(2)</sup>

### Exploration Toolkit

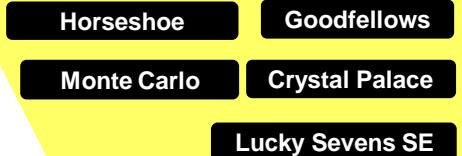
- Gold in soil (+5ppb Au)
- Structure (fluid pathways, dilational sites)
- Mafic rocks (rheological contrast, thrusts)
- Magnetite destruction (fluid pathways)
- Fold closures (trap sites)
- Well understood pathfinder element zonation <sup>(5)</sup>



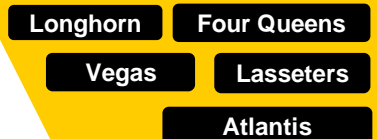
### Exploration Target



### Anomalous Prospect



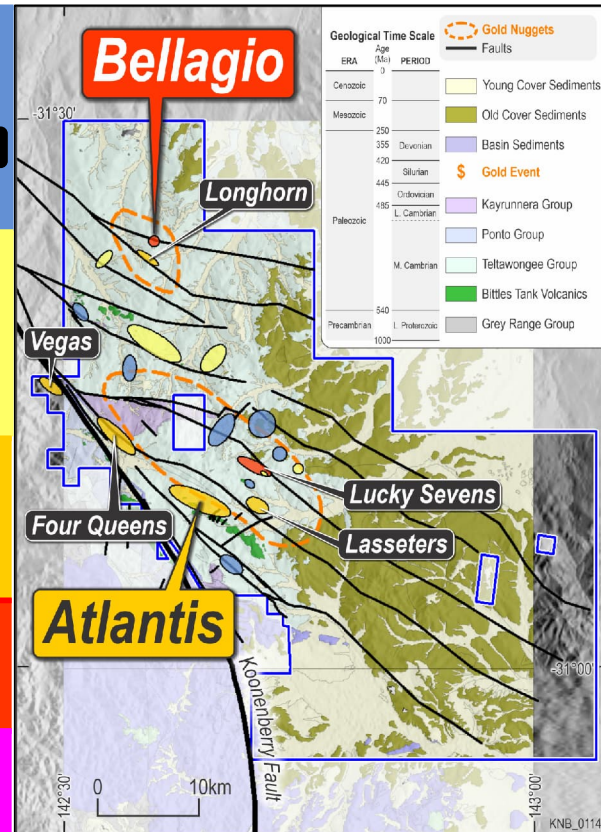
### Drill Ready Prospect



### Mineralised Prospect



### Mineral Resource





# Bellagio Au Prospect

## Widespread gold zone » 200m x 300m

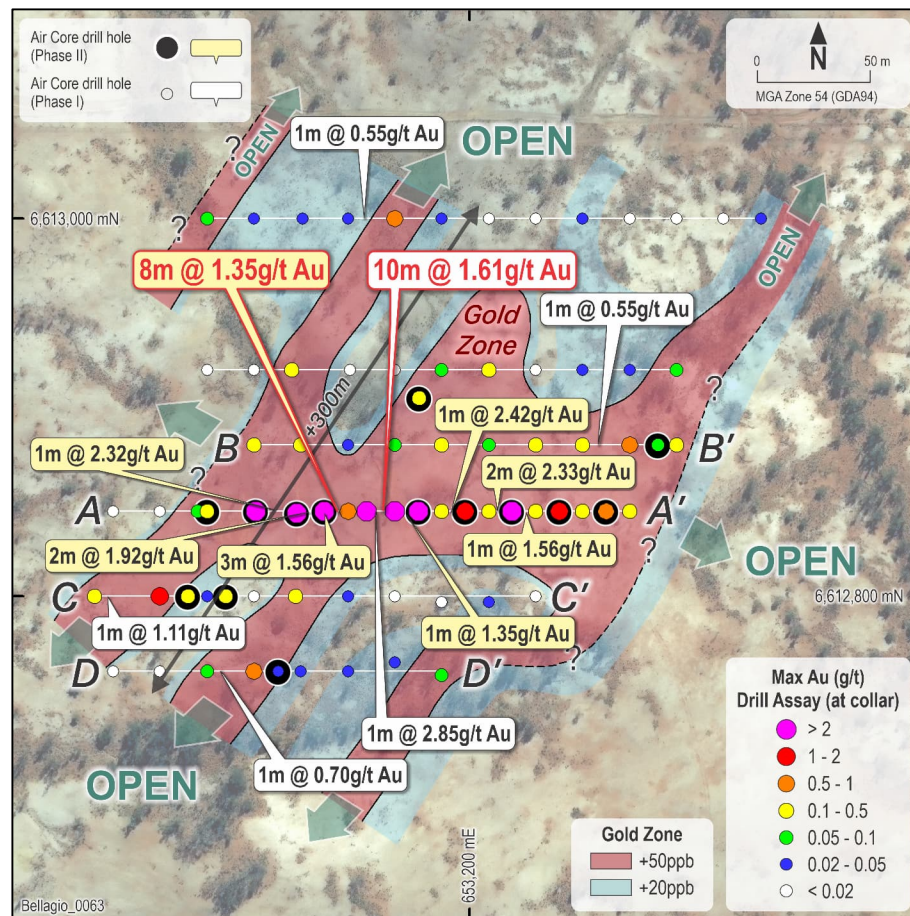
### DISCOVERY HISTORY AND GEOLOGY

- Outcropping quartz veins and abundant quartz scree (limited outcrop)
  - 39.4g/t, 22.5g/t and 11.25g/t Gold <sup>(1, 2)</sup>
  - Demonstrates potential for high grade gold mineralisation
- Great structural position: fold closure in hangingwall of thrust fault
- Robust gold in soil anomaly (BLEG) Max 33ppb Au, 37.4ppm As <sup>(1)</sup>
  - Remains open in all directions
- Gold associated with milky white to smokey grey quartz veining
  - Iron Oxides (Hematite, Goethite) likely weathered from sulphides
- Hosted by metamorphosed sediments (Siltstone, Mudstone and Sandstone)
  - Rheological contrast between Sandstone unit and finer grained sedimentary units potential focus for deformation and fluid flow

### WIDESPREAD GOLD MINERALISATION

- Broad 250m x 300m gold zone in bedrock
- Pathfinder support with Arsenic (As), Copper (Cu), Antimony (Sb)
  - Coincident, but larger footprint, vectors to gold
- NNE striking veins consistent with en echelon vein emplacement along WNW trending shear zone

➤ Gold system remains OPEN in all directions





# Bellagio Au Prospect

## Significant bedrock gold identified

### PHASE I DRILLING: EXTREMELY ENCOURAGING WIDESPREAD GOLD MINERALISATION <sup>(1)</sup>

- Systematic exploration; 7 drill traverses, 67 drillholes (3,843m)
  - 10m @ 1.61g/t Au from 18m, inc. 1m @ 4.47g/t gold from 24m (23BEAC002)
  - 1m @ 2.85g/t Au from 21m (23BEAC001)
  - 6m @ 0.56g/t Au from 21m (23BEAC005)

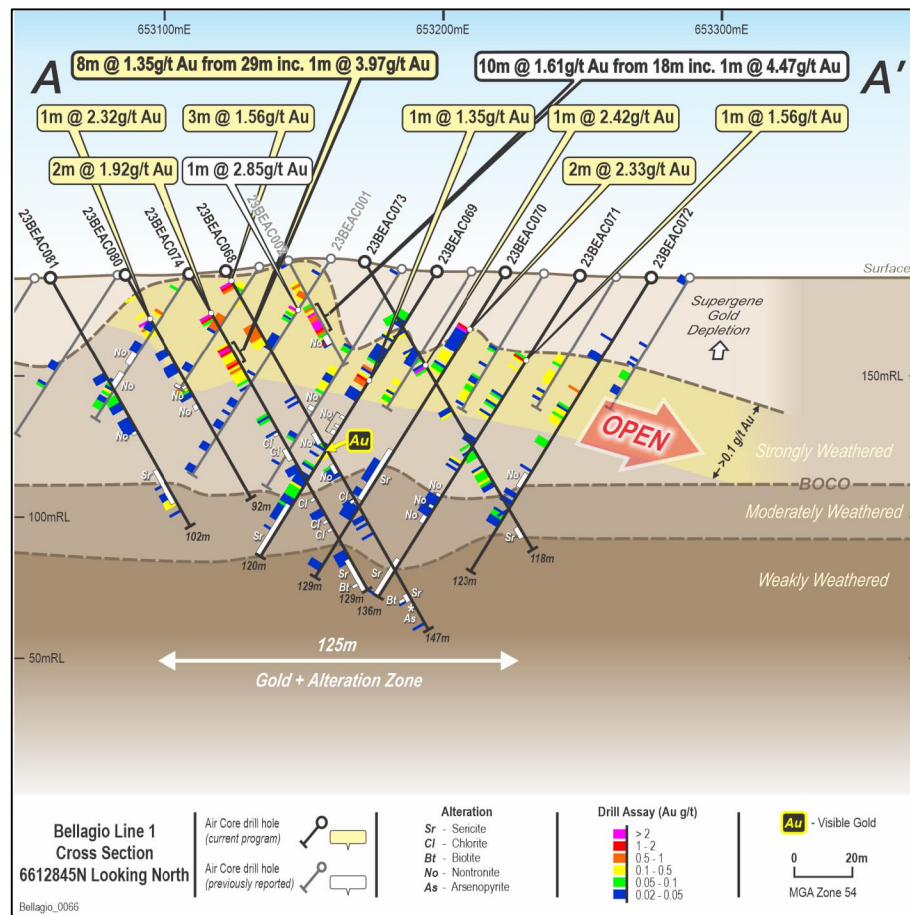
### PHASE II DRILLING: VISIBLE GOLD AND WIDESPREAD ALTERATION <sup>(2)</sup>

- High impact program; 14 Holes (1,595m) <sup>(3)</sup>
  - 8m @ 1.35g/t Au from 29m inc. 1m @ 3.97g/t Au from 30m (23BEAC074)
  - 2m @ 2.33g/t Au from 24m (23BEAC070)
  - 1m @ 2.42g/t Au from 43m (23BEAC073)
  - 1m @ 2.32g/t Au from 18m (23BEAC080)
  - 2m @ 1.92g/t Au from 16m (23BEAC074)
  - 3m @ 1.56g/t Au from 4m (23BEAC068)
  - 1m @ 1.56g/t Au from 36m (23BEAC071)
  - 1m @ 1.35g/t Au from 46m (23BEAC069)

### OPEN IN ALL DIRECTIONS

- >1g/t Au over +125m area <sup>(3)</sup>
- Supergene gold depletion in near surface environment
- Sericite-Chlorite-Biotite alteration
  - Common feature of orogenic gold deposits
  - Potential vectors to mineralisation
- Interpreted shallow-moderately dipping shear zone control

➤ Open at depth towards the East



# Bellagio Au Prospect

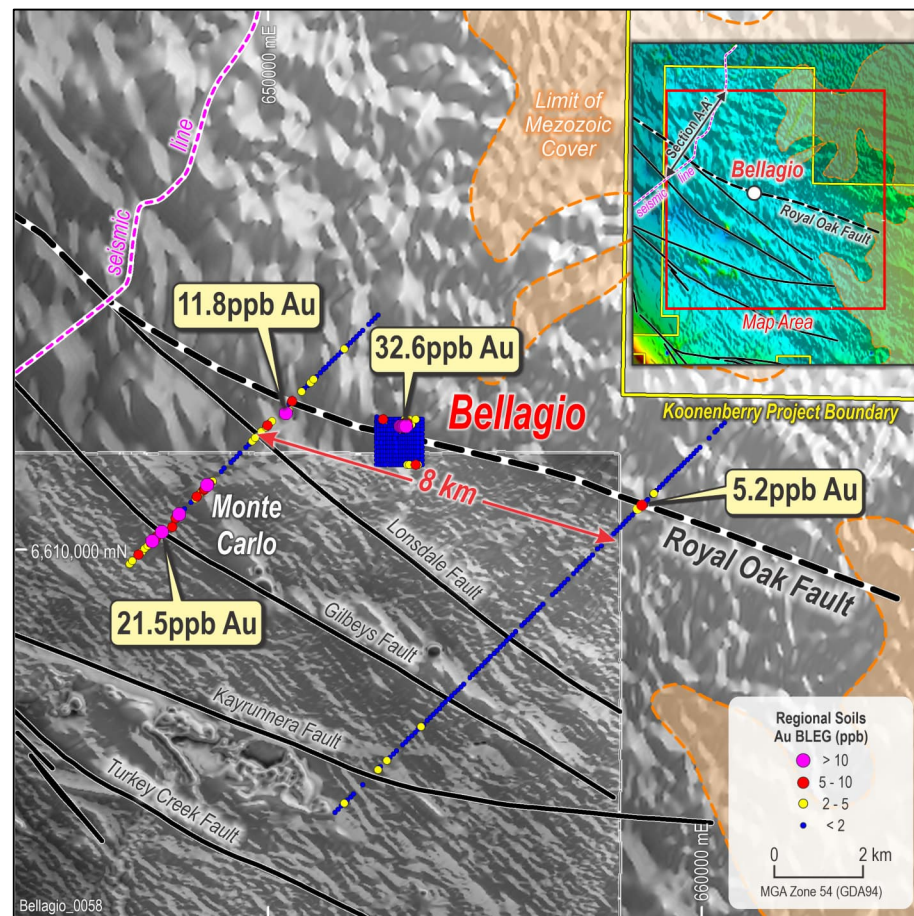
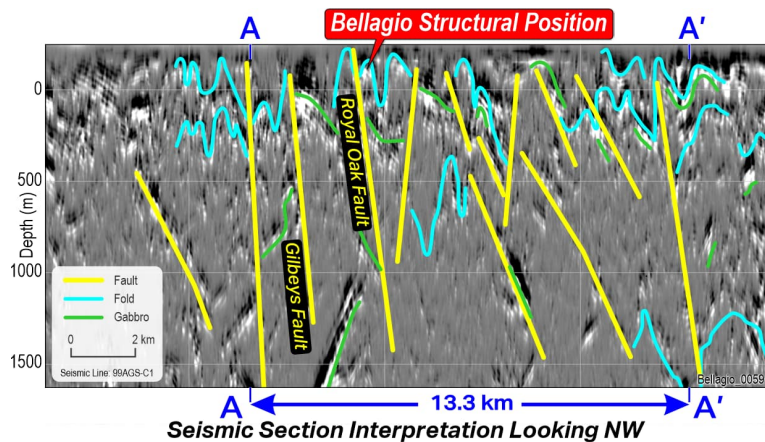
## A lot of smoke » Where is the fire?

### OPEN ALONG STRIKE » ROYAL OAK FAULT

- Fertile structure +20km prospective strike
  - Deeply penetrating fault (2<sup>nd</sup>/3<sup>rd</sup> order fault splay/thrust)
  - Traceable in magnetic and seismic data <sup>(1)</sup>
- Largely unexplored with little/no systematic work
  - Locate dilatant zones (jogs, releasing bends etc)
  - Potential for better trap sites, gold grades, widths etc

### REGIONAL SOILS (BLEG)

- Two coincident gold anomalies 8km along strike from Bellagio
  - 11.8ppb Au (2.6km NW) and 5.2ppb Au (5.8km SE) <sup>(1)</sup>
- Monte Carlo Prospect
  - Max 22ppb Au <sup>(1)</sup> No systematic follow up



Notes: 1. KNB (ASX) 05/02/2024



# Atlantis Cu-Au Prospect

## Extensive Copper + Gold » Never drill tested

### GEOCHEMISTRY

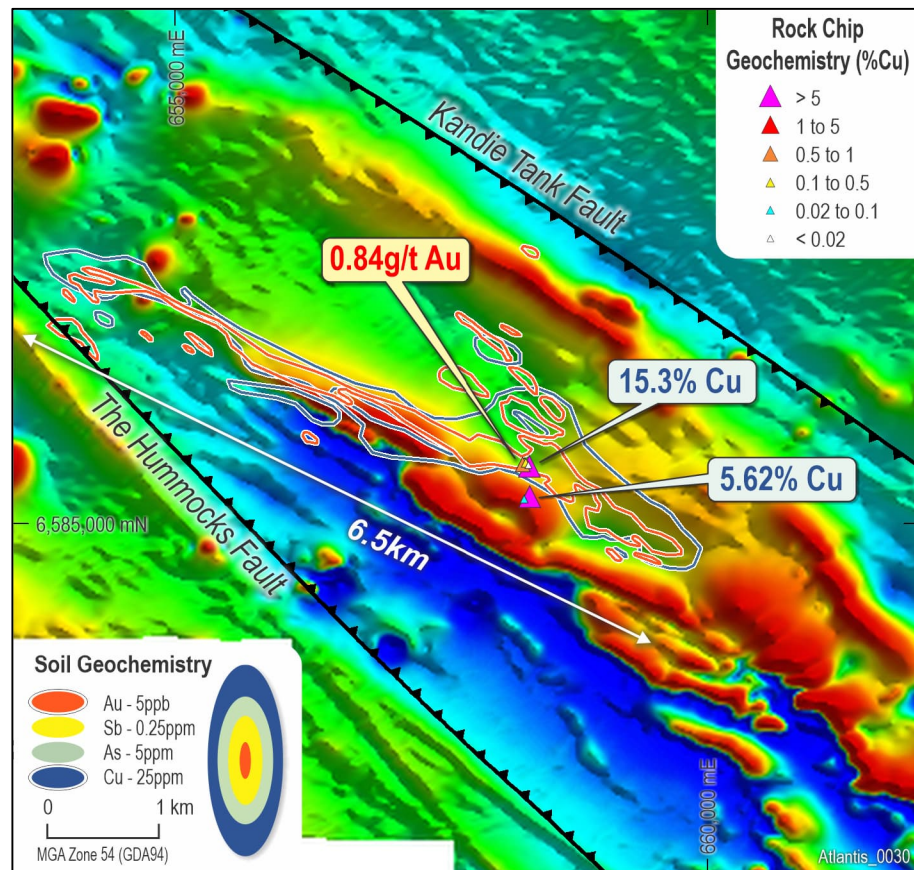
- Gold in soil anomaly 6.5km x 900m (+5ppb, max 49.4ppb Au) <sup>(1)</sup>
- Strongest, most coherent anomaly within the KNB Project Area
- Au +Sb-As-Cu ±Pb-Zn pathfinder element association
- Rock chip samples to 15.3% Cu, 0.84 g/t Au, 16,000ppm As, 0.34% Pb <sup>(2)</sup>

### GEOLOGY & STRUCTURE

- Adjacent to Koonenberry deep crustal/mantle-tapping fault
- Wedged between two second order splay faults
- Doubly-plunging antiform interpreted (mafic dome)
- Basaltic units are interpreted to have been thrust up from depth (magnetic highs)
  - Important pre-cursor structural feature for gold mineralisation at Stawell
- Structural complexity, particularly along western limb
- Magnetite destruction may indicate hydrothermal fluid pathway and alteration

### POSSIBLE ANALOGUE

- +5Moz Stawell Gold Mine (Magdala deposit)
  - Proximal to mantle-tapping fault (Moyston Fault)
  - Doubly-plunging basalt dome thrust up from depth
  - Gold trap sites along fold hinges and structures wrapping around the dome where dilational geometries/space is created by earlier deformation





# Atlantis Cu-Au Prospect

## Analogous to +5Moz Stawell Gold Mine

### ALTERATION AND MINERALISATION

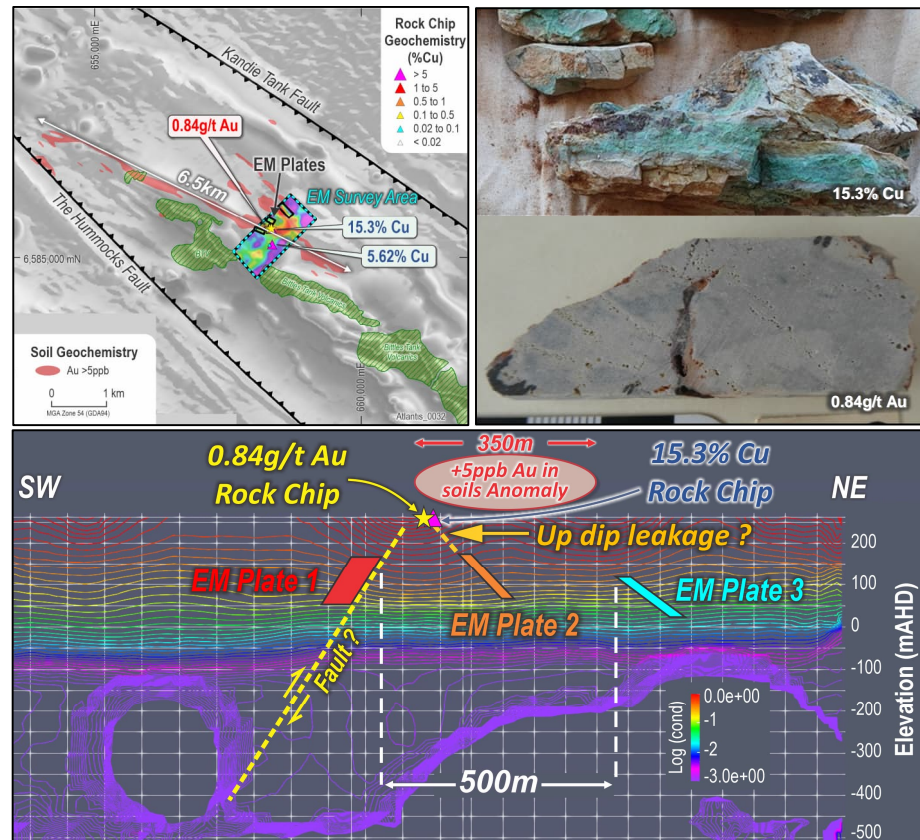
- High grade Cu rock chip samples with Malachite
- Remnant disseminated sulphides in outcrop (after chalcopryrite)
- Strong patchy silicification + weak pervasive hematite alteration
- Chlorite alteration interpreted in Aster imagery (alteration feature at Stawell)

### GEOPHYSICS

- Electromagnetics (EM) survey completed:
  - 3 conductive plates modelled <sup>(1)</sup>
  - 200x125m, 150x125m and 300x125m starting around 100m depth
  - Potentially associated with vein and disseminated sulphides
  - Down dip from 15.3% Cu and 0.84g/t Au in outcrop
  - Coincident with folded volcanic stratigraphy
  - Resistivity appears to map basalt contact
  - Significant in terms of orogenic gold model (faults + folds + rheological contrast)
  - Significantly enhanced prospectivity & assists drill targeting

### DRILL READY

- Exciting Greenfields Target with robust soil anomaly and prospective geology
- Never drill tested! Drilling to commence in April

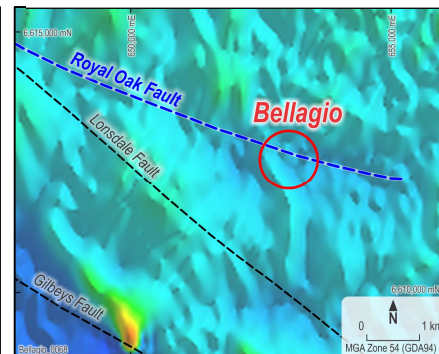
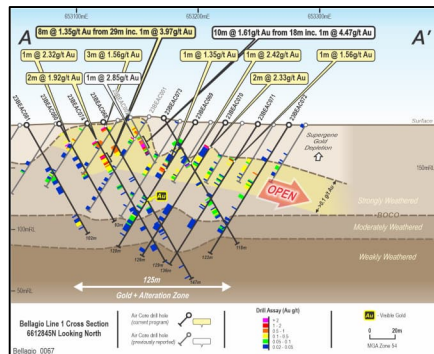
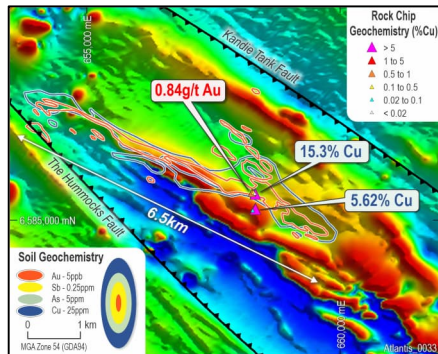


# Koonenberry Gold – Forward Program

## Focused Strategy » High Impact » Accelerating Discovery with Drilling

| PROSPECT                | ACTIVITY                   | OBJECTIVE                                     | Mar | Apr | May | Jun | Jul | Aug | Sep |
|-------------------------|----------------------------|---|-----|-----|-----|-----|-----|-----|-----|
| Atlantis Cu-Au Prospect | AC Drilling                | Phase I drill testing (first ever drill test) |     | ▶   |     |     |     |     |     |
|                         | Geophysics (IP)            | Define drill targets                          |     |     | ▶   |     | ▶   |     |     |
| Bellagio Au Prospect    | AC Drilling                | Define gold zone footprint                    |     |     | ▶   |     |     |     |     |
|                         | AC Drilling                | Target depth extensions                       |     |     |     | ▶   |     |     |     |
| Royal Oak Fault         | Geophysics (Magnetics)     | Define faults and trap sites                  |     | ▶   |     |     |     |     |     |
|                         | Geochemistry (Soils/Rocks) | Define drill targets along prospective fault  |     |     | ▶   | ▶   |     |     |     |
|                         | AC Drilling                | Phase I drill testing                         |     |     |     |     | ▶   |     |     |
| Pipeline Prospects      | AC Drilling                | Phase I drill testing of quality Prospects    |     |     |     |     |     | ▶   |     |

► Consistent news flow for shareholders over the next 6 months





## Investment Highlights » Discovering Gold and Copper in an Emerging Province

100% owned Project  
Mining friendly jurisdiction  
Focussed strategy



|                    |  |
|--------------------|--|
| <b>Size</b>        | » Multi Million ounce gold potential (+copper)   |
| <b>Scale</b>       | » Belt scale discovery opportunity (2,060km <sup>2</sup> )                                     |
| <b>Timing</b>      | » Drill ready exciting gold and copper targets   |
| <b>Undervalued</b> | » Leveraged to exploration success   |
| <b>Support</b>     | » Industry leading Lion Selection Group  |
| <b>Cash</b>        | » 2.35M recently announced capital raise funds high impact exploration programs <sup>(1)</sup> |
| <b>Execution</b>   | » Board & Management experienced in capital markets and gold exploration                       |







For further information, please contact:

**Dan Power**

**Managing Director**

[dan.power@koonenberrygold.com.au](mailto:dan.power@koonenberrygold.com.au)

+61 8 6245 9869

**Brett Tucker**

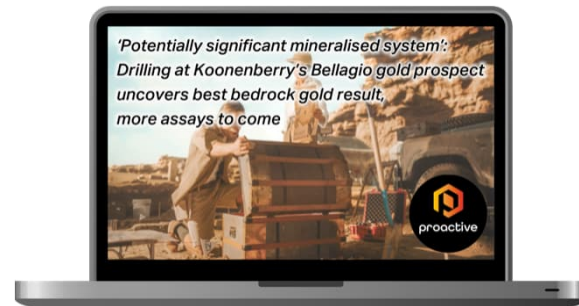
**Company Secretary**

[Brett.tucker@automicgroup.com.au](mailto:Brett.tucker@automicgroup.com.au)

+61 3 8678 4094

# News

## Exciting belt scale gold discovery potential in emerging province



# Koonenberry Gold

## ESG



- Focusing on minimising environmental impact
- Caring for the environment and fragile ecology
- Managing biosecurity and weed prevention
- Managing environmental compliance



- Focusing on stakeholder engagement and building trust
- Implementing effective health and safety measures
- Supporting local communities
- Utilising local suppliers, logistics and hire where possible



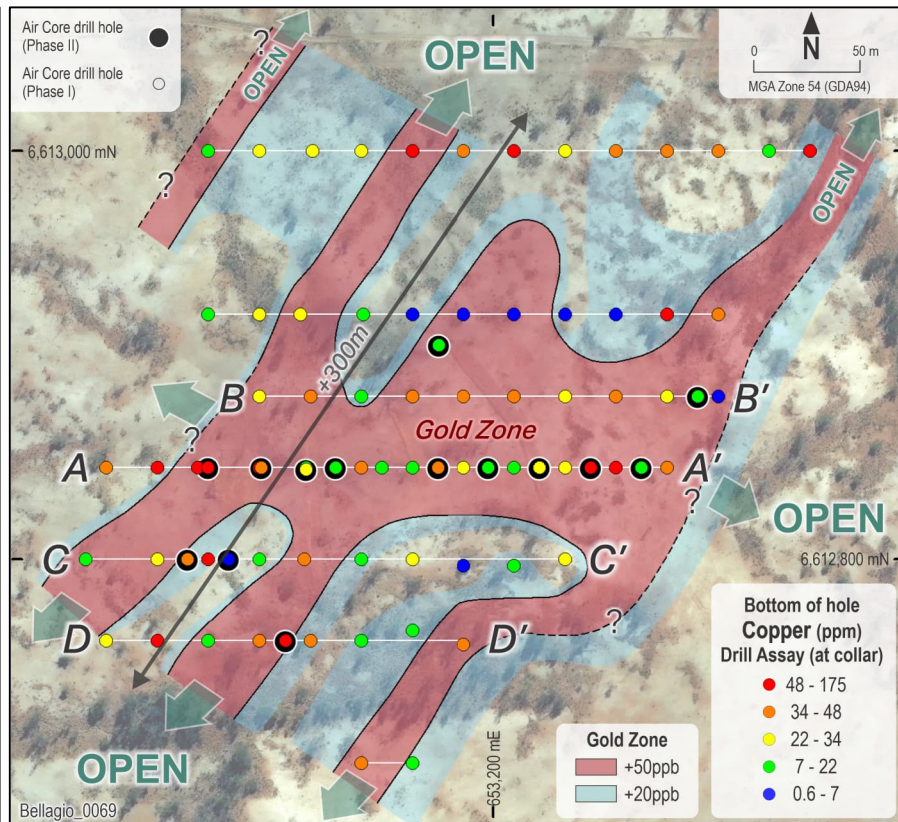
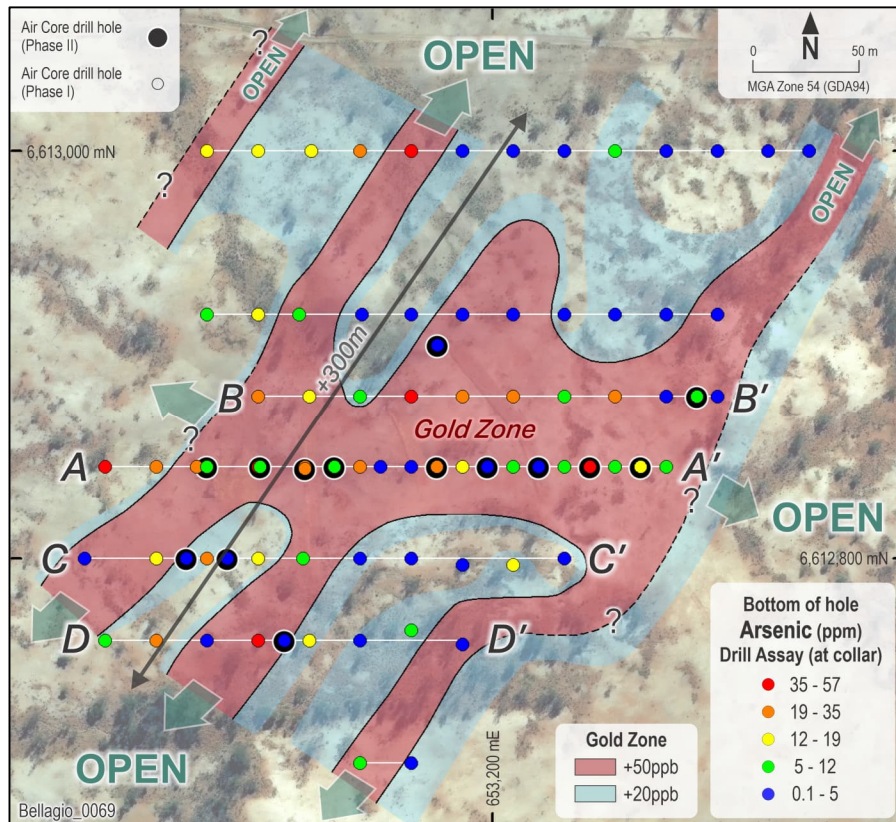
- Focusing on responsible and ethical business practices
- Maintaining a diverse mix of skills and experience
- Managing reporting obligations
- Adhering to rigorous ASX disclosure





# Bellagio Au Prospect

Broad bedrock gold zone 200m x 300m + Arsenic + Copper



# Four Queens Prospect

## High grade gold target

### GEOCHEMISTRY

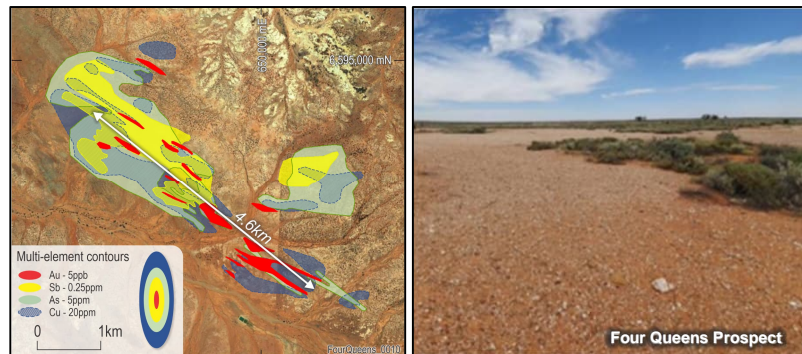
- Gold in soil anomaly 4.6km long and up to 750m wide (+5ppb, max 55.9 ppb Au) <sup>(1)</sup>
- Au +Sb-As ±Cu pathfinder element association
- Historical Lag sample results of 13.95g/t Au and 665ppm As <sup>(2)</sup>

### GEOLOGY & STRUCTURE

- Located along second order splay
- Largely unknown due to lack of outcrop
- Located on Sth margin of Nuntherungie half-graben (pull-apart basin setting)

### DRILL READY

- Never been drill tested!



Notes: 1. KNB (ASX) 29/04/2022; 2. Peters, J., 2021

# Vegas Prospect

## Shear-zone hosted gold system

### GEOCHEMISTRY

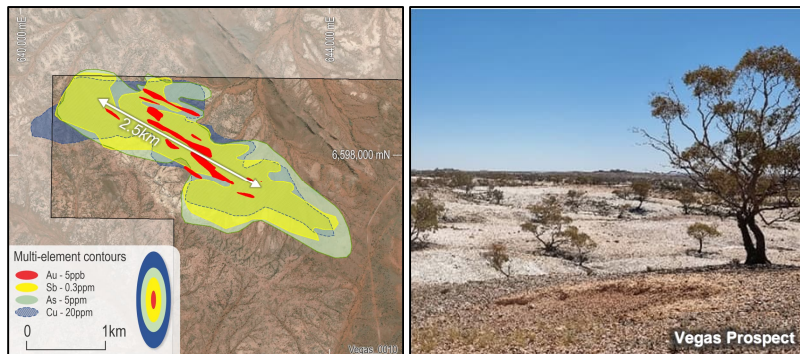
- Gold in soil anomaly 2.0km long and up to 450m wide (+5ppb, max 20.1 ppb Au) <sup>(1)</sup>
- Au +Sb-As ±Cu-Mo pathfinder element association

### GEOLOGY & STRUCTURE

- Extensive quartz scree indicative of hydrothermal fluid flow
- Located near Koonenberry fault + intersection of multiple splay faults
- Multiple stacked reefs

### DRILL READY

- Never been drill tested!



Notes: 1. KNB (ASX) 29/04/2022



# New Opportunities

## Identify and test fertile structures

### GEOLOGY

- Western half of project exposed with outcropping mineralised quartz veins
  - Same age as Victorian Goldfields (~440Ma)
- Eastern half of project hidden under thin unmineralised cover rocks (Mesozoic)
  - Palaeoplacer gold in basal pebble conglomerate (~65Ma)
- Koonenberry nugget field (recent)
  - Alluvial gold being derived from both mineralised quartz veins and the Mesozoic palaeoplacer deposits
  - Supported by gold nugget morphology

### GEOPHYSICS

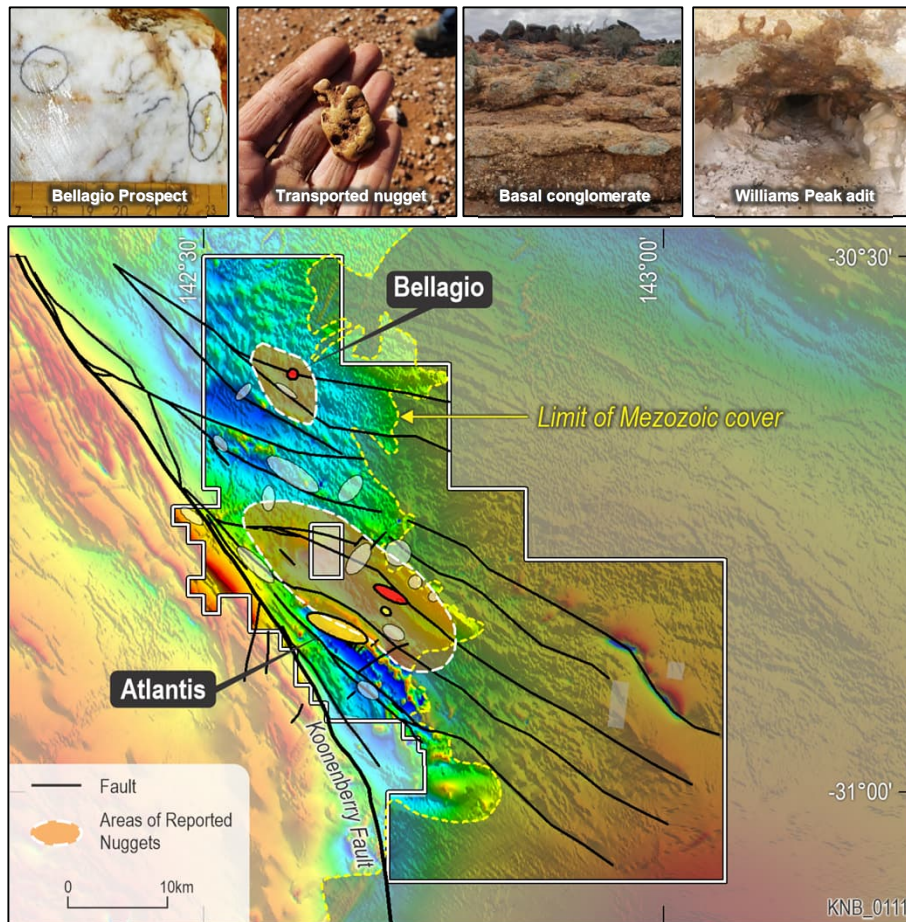
- Mineralised structures in outcrop can be mapped along strike in magnetic data
  - Structures are interpreted to continue under thin cover to the SE
- Magnetic highs are also observed under shallow cover
  - Interpreted to represent mafic rocks thrust up from depth

### OPPORTUNITY

- Potential for large mineralised systems to be preserved under thin cover
  - +160km of prospective structures under Mesozoic cover
  - Completely untested
- Utilise pathfinder element zonation to vector towards gold systems

### POSSIBLE GEOLOGICAL ANALOGUE

- Exploration under Murray Basin cover sediments north of Stawell and Bendigo
- Murray basin thickness: 0-150m+ ?; Koonenberry Mesozoic thickness: <10's m?
  - CYL: 12.9m @33.1g/t Au from 66.4m inc. 0.5m @831g/t Au <sup>(1)</sup>





# References

- 24/09/2021. Peters, J. Koonenberry Gold Pty Ltd Independent Geologist's Report - Koonenberry Gold Project 10 May 2021 contained in Koonenberry Gold Ltd Prospectus.
- 14/12/2021 KNB (ASX). Koonenberry Gold, Project update
- 29/04/2022 KNB (ASX). Koonenberry Gold, Quarterly Activities Report for the period ended 31 March 2022
- 24/05/2022 KNB (ASX). Structural Studies Update.
- 28/07/2022 KNB (ASX). Koonenberry Gold, Quarterly Activities Report for the period ending 30 June 2022
- 15/08/2022 KNB (ASX). Drilling commences at Lucky Sevens high grade gold Prospect.
- 10/10/2022 KNB (ASX). Completes drilling at Lucky Sevens high grade gold Prospect.
- 24/10/2022 KNB (ASX). Koonenberry Gold, Quarterly Activities Report for the period ending 30 September 2022
- 28/11/2022 KNB (ASX). Koonenberry Gold, Lucky Sevens High Grade Gold Prospect Update
- 21/12/2022 KNB (ASX). Koonenberry Gold, Maiden RC Drilling Results for Lucky Sevens Gold Prospect
- 24/02/2022 KNB (ASX). Koonenberry Gold, Commencement of 2023 Field Work following database review
- 01/03/2023 KNB (ASX). Koonenberry Gold, EM Geophysical Survey Underway at Atlantis Au-Cu Prospect
- 21/03/2023 KNB (ASX). Koonenberry Gold, EM Conductor detected at Atlantis Au-Cu Prospect
- 03/04/2023 KNB (ASX). Koonenberry Gold, Exciting 22.5g/t Gold in quartz vein outcrop at Bellagio
- 26/04/2023 KNB (ASX). Koonenberry Gold, Quarterly Activities Report for the period ended 31 March 2023
- 31/05/2023 KNB (ASX). Bellagio Prospect and Regional Project Update.
- 25/07/2023 KNB (ASX). Koonenberry Gold. Quarterly Activities Report for the period ended 30 June 2023
- 04/08/2023 KNB (ASX). Koonenberry Gold. Approval to commence maiden drilling program at Bellagio
- 06/09/2023 KNB (ASX). Koonenberry Gold. Drilling program update for Bellagio Gold Prospect
- 03/10/2023 KNB (ASX). Bellagio Gold Prospect Encouraging Initial Drill Results.
- 07/09/2023 KNB (ASX). Addendum to Bellagio Update Announcement.
- 23/10/2023 KNB (ASX). Quarterly Activities Report for period ending 30 September 2023
- 30/10/2023 KNB (ASX). Widespread gold mineralisation identified from first pass drilling at Bellagio
- 20/11/2023 KNB (ASX). High impact follow up drilling to commence at Bellagio
- 12/12/2023 KNB (ASX). Bellagio drilling intersects visible gold and widespread alteration
- 16/01/2024 KNB (ASX). Approval to commence maiden drilling program at Atlantis
- 31/01/2024 KNB (ASX). Quarterly Activities Report for the period ending 31 December 2023
- 05/02/2024 KNB (ASX). Bellagio drilling defines widespread gold mineralisation
- Catalyst Minerals (ASX: CYL). 17/05/2022. Gold grades of up to 831g/t at Lawry Prospect, Tandarra
- Manhattan Corporation (ASX: MHC). 06/12/2021. Drilling intersects 8m at 40.5g/t Au
- Manhattan Corporation (ASX: MHC). 23/03/2022. Outstanding wide zones of shallow gold
- North Stawell Minerals (ASX: NSM). 2021.01.31. December 2021 Quarterly Activities Report, p14
- North Stawell Minerals (ASX: NSM). 21/06/2023. Technical Update June 2023 – OREAS Vic Round Up Conference
- Cayley, R. A., et al., 2011. Crustal architecture of central Victoria: results from the 2006 deep crustal reflection seismic survey
- Direen, N. G., 2021. Koonenberry seismic reinterpretation of reprocessed data. Internal report for Koonenberry Gold Ltd
- Greenfield J. and Reid, W., 2006. Orogenic gold in the Tibooburra area of northwestern NSW a ~440 Ma ore system with comparison to the Victorian Goldfields
- Miller, J., et al., 2005. Evolution of a reworked orogenic zone: The boundary between the Delamarian and Lachlan fold belts, southeastern Australia
- Phillips, D., et al., 2012. Timing of gold mineralisation in the western Lachlan Orogen, SE Australia: A critical overview
- Victorian State Government, 2021. Earth Resources Regulation Annual Statistical Report FY2020-21
- Willman, et al., 2010. Crustal-Scale Fluid Pathways and Source Rocks in the Victorian Gold Province, Australia: Insights from Deep Seismic Reflection Profiles (Society of Economic Geologists, Inc. Economic Geology, v. 105, pp. 895–915)