



28 March 2024

James Bay Expands Quebec Footprint with Acquisition of La Grande East Project

Highlights:

- James Bay Minerals further expands its strategic landholding within the world-class La Grande Province in Quebec through the acquisition and staking of 136 claims totalling 7,000 hectares.
- The Company's overall La Grande land holding now totals 37,168 hectares.
- Newly acquired property sits within a magnetic low which is interpreted to trend into Patriot Battery Metals Tier-1 Corvette Lithium Project.
- Importantly, La Grande East also sits less than 1km from the Transtaiga Highway, which allows for all year-walk-up access.
- Multiple linear outcropping features identified from satellite imagery within the new claims are interpreted as pegmatites. Some appear to extend over strike lengths of more than 500m.

James Bay Minerals (ASX: **JBY**) ("**James Bay Minerals**" or "**the Company**") is pleased to advise that it has entered into a two-tranche agreement to acquire a 100% interest in the La Grande East Project, located in the James Bay region of Quebec, Canada.

James Bay Executive Director, Andrew Dornan, commented:

"The La Grande East Project is another exceptional addition to the Company's critical minerals portfolio in this world-class district. Sitting within a magnetic low that trends into the same corridor as the Patriot Battery Metals Corvette discovery and with the Transtaiga Highway located less than 1km to the north of the property, this Project already presents several exciting walk-up exploration targets."

La Grande East Project

The La Grande East Project is situated approximately 15km from James Bay Minerals' Aqua Property and includes 136 claims (62 claims to be acquired and 74 claims staked), covering an area of 7,000 hectares along the Robert-Bourassa reservoir.

Key attributes and features of the Project include:

- Two magnetic lows which are interpreted to trend into Patriot Battery Metals Corvette Project.
- Initial reviews of the eastern portion of the property have identified multiple large white dyke-like features as viewed from satellite imagery. Some are more than 500m in length.

James Bay Minerals Limited
1/1 Tully Road, East Perth
Western Australia 6004

info@jamesbayminerals.com.au
www.jamesbayminerals.com.au

- The property sits less than 1km from the Transtaiga Highway, which allows for all year walk-up access.

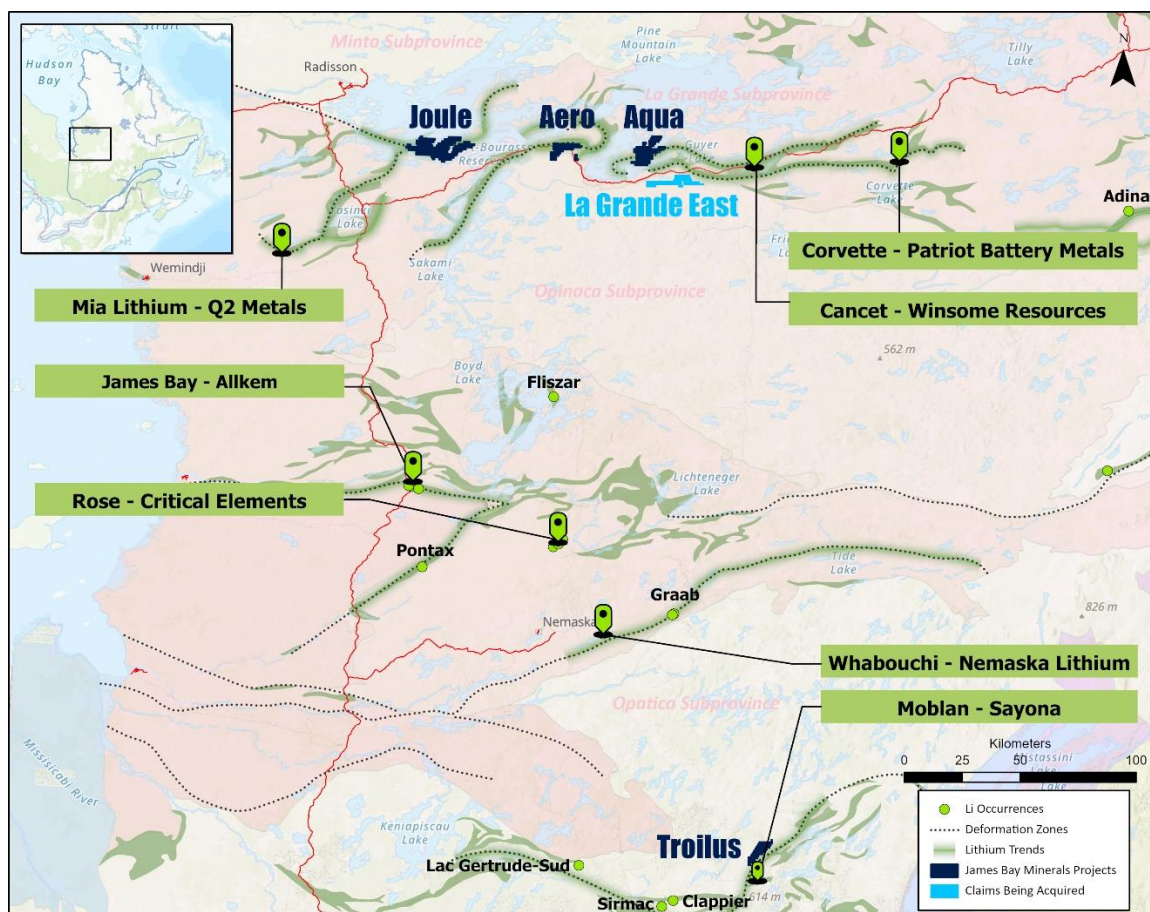


Figure 1 – James Bay Minerals' key lithium project locations in Quebec, Canada

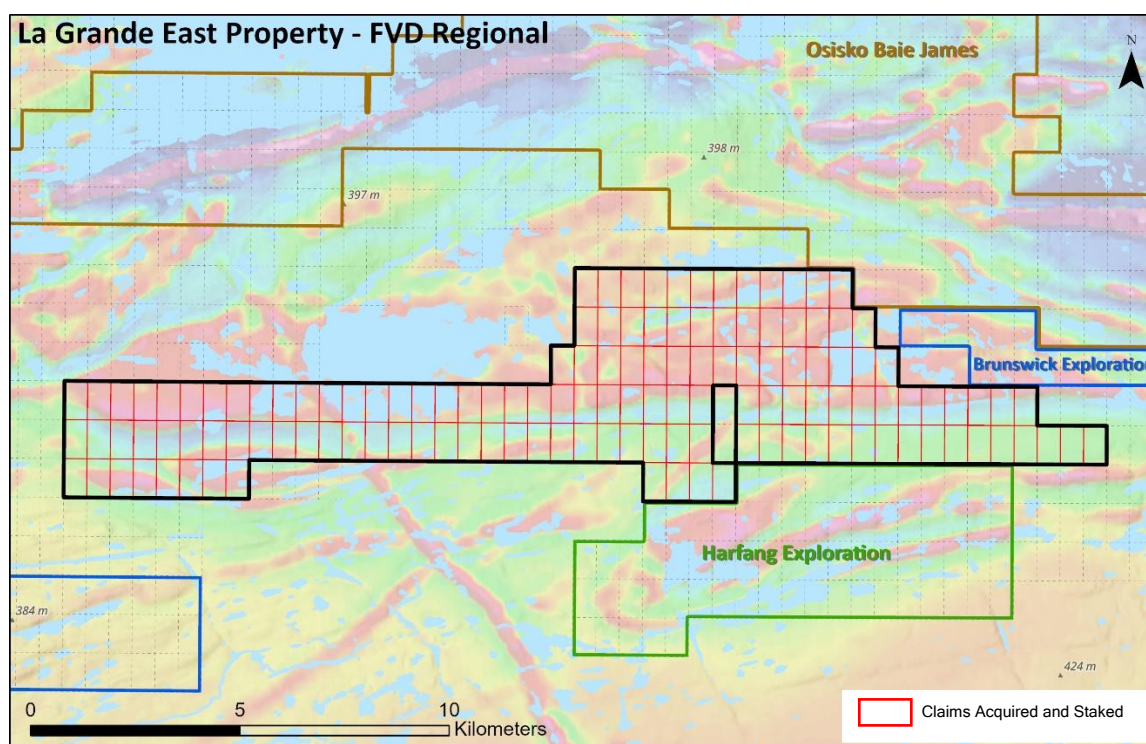


Figure 2 – La Grande East acquired and staked claims.

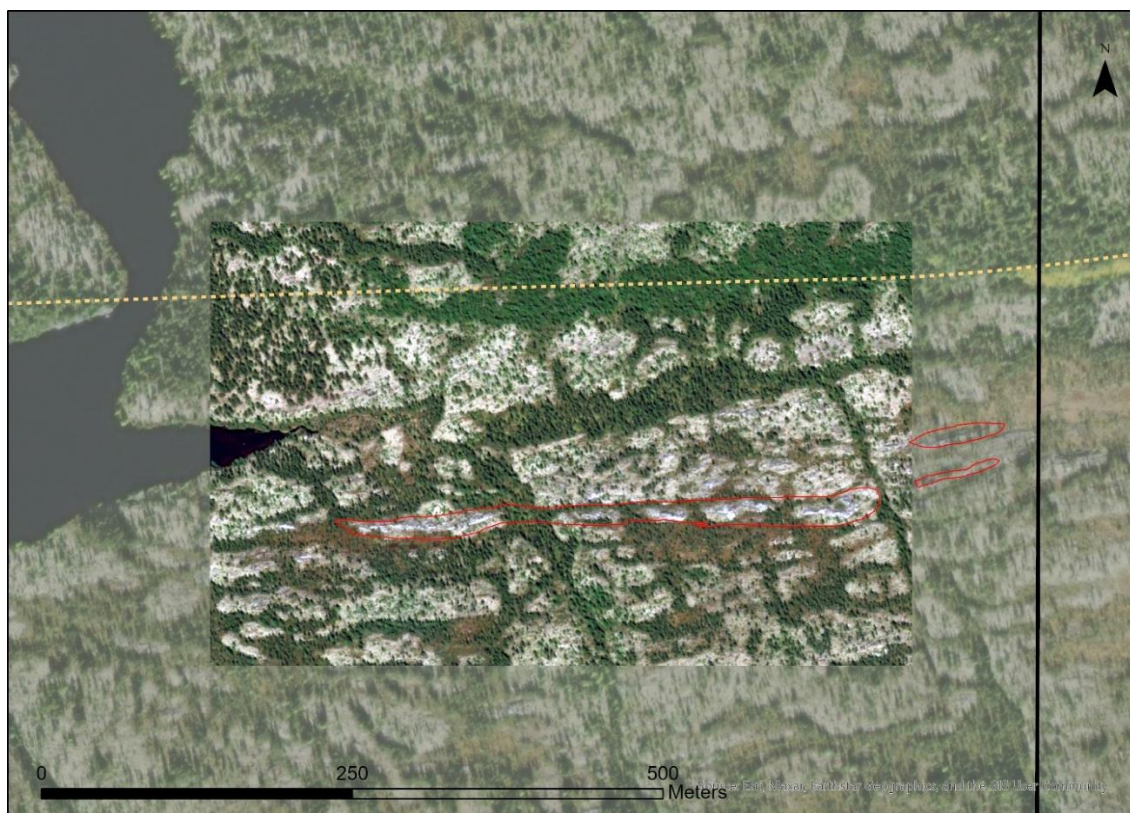


Figure 3 – Bing Satellite images of large white outcrops interpreted as pegmatites within the eastern portion of the project.

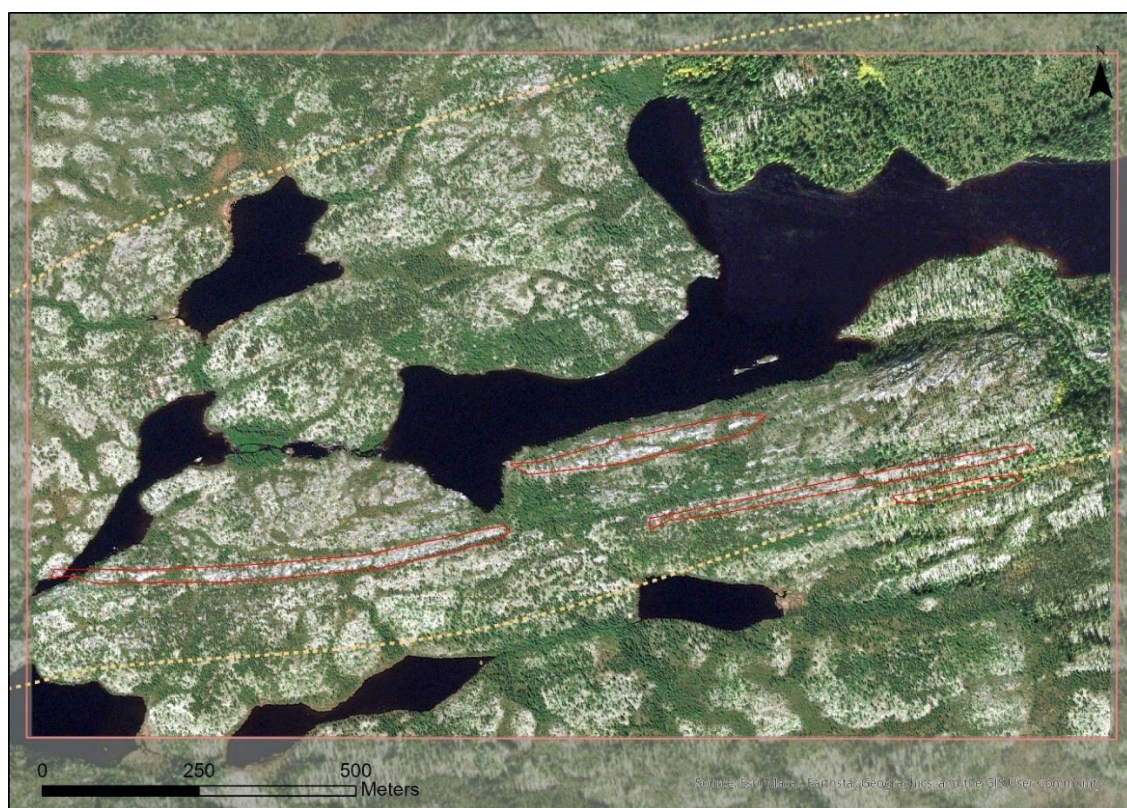


Figure 4 – Bing Satellite images of large white outcrops interpreted as pegmatites within the eastern portion of the project.

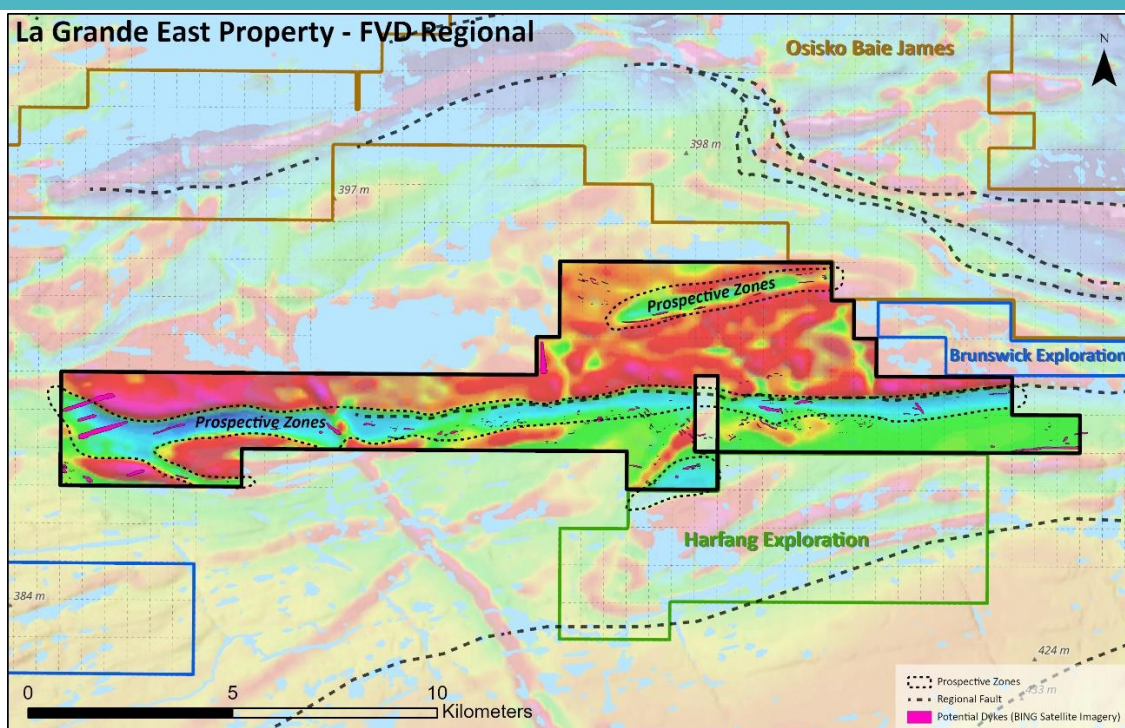


Figure 5 – Government airborne geophysics images obtained from Sigeom across the La Grande East Project. ¹

Desktop studies and reviews are continuing across the La Grande East Project with the JBY team assessing available government and satellite data. Targets identified through this process, together with the results of desktop studies, will inform an initial exploration field program which is due to commence in Q2, 2024.

Details of La Grande East Acquisition:

The Company has entered an Agreement with Southshore Partnership Inc., Marty Hueber, and Mark Fekete (collectively **Vendors**) to acquire a 100% interest in the claims detailed within Appendix 1 (**Mining Claims Agreement**).

Key terms of the Agreement are detailed below:

- (i) **Initial Consideration:** Subject to satisfaction of the Conditions Precedent, the Initial Consideration to be paid to the Vendors (in total) is:
 - (a) CAD\$21,000; and
 - (b) 210,000 JBY Shares.
- (ii) **Deferred Consideration:** Subject to satisfaction of the Conditions Precedent, the Deferred Consideration to be paid to the Vendors (in total) on or before 29 March 2026 is:

¹ Ministère des Ressources naturelles et des Forêts (MRNF), 2024 - Interactive map. MRNF, Québec; Online products and services - Mines, Interactive Map.

- (a) CAD\$30,000;
- (b) 300,000 JBY Shares; and
- (c) Net Smelter Royalty of 3% payable on all products extracted from the Mining Claims (**Royalty**). The Company has the option, at its discretion, to purchase or extinguish two half percent (i.e., 0.5%) of the Royalty at any time for cash consideration of CAD\$1,000,000 per 0.5%.

There are no minimum work commitments on the Mining Claims. Should the Company elect not to proceed with the Deferred Consideration, ownership of the Mining Claims and the staked claims detailed below will transfer to the Vendors.

- (iii) **Conditions Precedent:** The Agreement is conditional upon satisfaction of the following conditions precedent, on or prior to the date that is 90 days from the date of the Agreement;
 - (a) the Buyer completing due diligence on the Mining Claims to its satisfaction, in its sole and absolute discretion; and
 - (b) The parties having obtained all other approvals, consents or waivers of a third party (including those of any Government Agencies) which are necessary to implement the Acquisition.
- (iv) **Amendment to the terms of existing Performance Rights:** As disclosed in the Company's Prospectus dated 19 July 2023, the Vendors hold a total of 5 million Performance Rights issued in relation to the Company's acquisition of the La Grande Project and the Troilus Project in Quebec Province, Canada. With effect from the date of the Agreement, the parties agree to vary the definition of 'Milestone Claims' in the terms and conditions of the existing Performance Rights to include all claims listed in Appendix 1 and 2 of this announcement.

Staking of Additional Claims

Further to the above acquisition the Company has staked an additional 74 claims totalling 3,800 hectares for a total cost of CAD\$13,604. Refer to Appendix 2 for claim details.

Background on James Bay Minerals

James Bay has acquired a 100% interest in one of the largest lithium exploration portfolios in the James Bay region, covering an area of 41,572Ha or 416km². The Joule, Aero, Aqua and La Grande East properties are located in the La Grande sub province along trend from the Corvette deposit, where Patriot Battery Metals (ASX: PMT) recently reported a maiden Inferred Mineral Resource Estimate of 109.2Mt at 1.42% Li₂O and 160ppm Ta₂O₅ (0.40% Li₂O cut-off grade).²

The Troilus Project is located further to the south sitting only 5km to the north of Sayona's Moblan Lithium Project and proximity to Winsome Resources' Sirmac-Clappier Project.

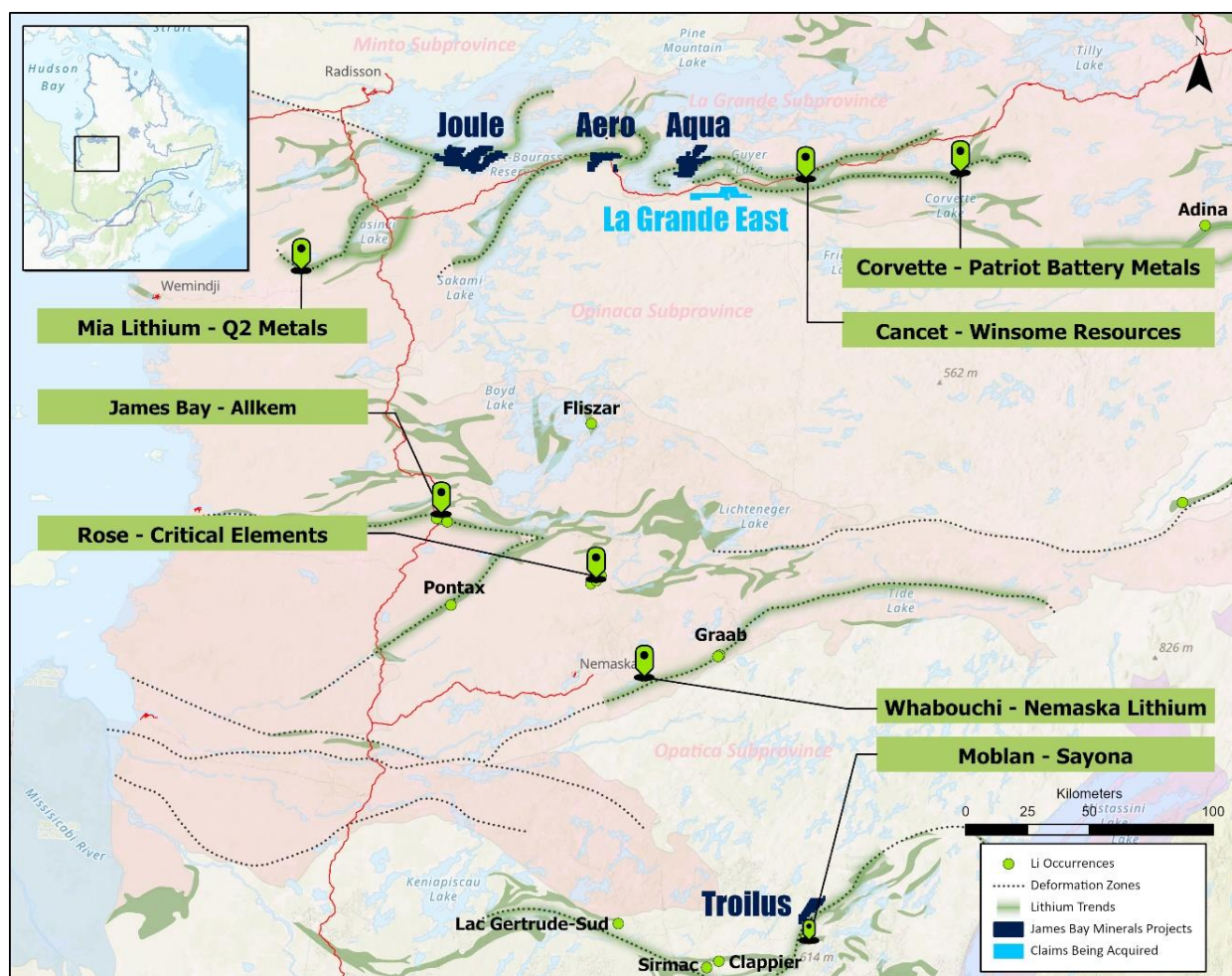


Figure 6 - James Bay Minerals' key lithium project locations in Quebec, Canada.

The flagship Joule Property encompasses a ~24km long prospective deformation zone along a regional fault which has been subject to minimal historical exploration³. The eastern segment of the deformation zone extends for 14km and fan tails to reach a width up to 1.5km.

The Aero Property contains approximately 12km of deformation zones which are considered highly prospective for LCT pegmatites³. Of note, the nearby Cancet (Winsome Resources Ltd) and Corvette (Patriot

² See Patriot Battery Metals Announcement dated 31 July 2023: "Patriot Announces the Largest Lithium Pegmatite Resource in the Americas at CV5, Corvette Property, Quebec, Canada".

³ See JBY Prospectus released 11 September 2023.

Battery Metals) properties both exhibit deformation zones upon which significant exploration success has occurred.

The Aqua Property contains a deformation zone running east to west through the property of approximately 6km, this zone is considered prospective for LCT Pegmatites³. Of note, FIN Resources have uncovered a significant lithium showing approximately 200m from the northwest boarder of the property⁴.

All the properties have the three key ingredients required to host massive lithium-caesium-tantalum (LCT) pegmatites³:

- Neo Archaean rocks;
- placement along major regional faults; and
- lying on greenstone belts in proximity to granites.

This announcement is authorised for ASX lodgement by the Board of Directors of James Bay Minerals Ltd.

ENDS

For more information:

Investors:

Andrew Dornan
Executive Director
James Bay Minerals
info@jamesbayminerals.com.au

Media:

Nicholas Read
Read Corporate
Phone: (08) 9388 1474
E: nicholas@readcorporate.com.au

Forward-looking statements

This announcement may contain certain forward-looking statements, guidance, forecasts, estimates or projections in relation to future matters (Forward Statements) that involve risks and uncertainties, and which are provided as a general guide only. Forward Statements can generally be identified by the use of forward-looking words such as “anticipate”, “estimate”, “will”, “should”, “could”, “may”, “expects”, “plans”, “forecast”, “target” or similar expressions and include, but are not limited to, indications of, or guidance or outlook on, future earnings or financial position or performance of the Company. The Company can give no assurance that these expectations will prove to be correct. You are cautioned not to place undue reliance on any forward-looking statements. None of the Company, its directors, employees, agents or advisers represent or warrant that such Forward Statements will be achieved or prove to be correct or gives any warranty, express or implied, as to the accuracy, completeness, likelihood of achievement or reasonableness of any Forward Statement contained in this announcement. Actual results may differ materially from those anticipated in these forward-looking statements due to many important factors, risks and uncertainties. The Company does not undertake any obligation to release publicly any revisions to any “forward- looking statement” to reflect events or circumstances after the date of this announcement, except as may be required under applicable laws.

Competent Person Statement

The Exploration Results reported in this announcement are based on, and fairly represent, information and supporting documentation reviewed, and approved by Mr Brodie Box, MAIG. Mr Box is a geologist and has adequate professional experience with the exploration and geology of the style of mineralisation and types of deposits under consideration to qualify as a Competent Person as defined in the 2012 Edition of the Joint Ore Reserves Committee (JORC) Australasian Code for reporting of Exploration Results, Mineral Resources and Ore Reserves. Mr Box consents to the form and context in which the Exploration Results are presented in this announcement.

*The information in this announcement that relates to prior Exploration Results at the La Grande and Troilus Projects is extracted from the ASX announcements, as referenced (**Original Announcements**). The Company confirms that it is not aware of any new information or data that materially affects the information contained in the Prospectus and Original Announcements.*

⁴See FIN Resources Announcement dated 9 October 2023: “Large Spodumene Crystals Discovered in Pegmatite Outcrop”

Appendix 1 – Acquired Claims

NTS Sheet	Type	Title No	Status	Expiry Date	Area (Ha)
NTS 33G06	CDC	2802088	Active	31/10/2026	51.33
NTS 33G06	CDC	2802089	Active	31/10/2026	51.33
NTS 33G06	CDC	2802090	Active	31/10/2026	51.33
NTS 33G06	CDC	2802091	Active	31/10/2026	51.33
NTS 33G06	CDC	2802092	Active	31/10/2026	51.33
NTS 33G06	CDC	2802093	Active	31/10/2026	51.32
NTS 33G06	CDC	2802094	Active	31/10/2026	51.32
NTS 33G06	CDC	2802095	Active	31/10/2026	51.32
NTS 33G06	CDC	2802096	Active	31/10/2026	51.32
NTS 33G06	CDC	2802097	Active	31/10/2026	51.32
NTS 33G06	CDC	2802098	Active	31/10/2026	51.31
NTS 33G06	CDC	2802099	Active	31/10/2026	51.31
NTS 33G06	CDC	2802100	Active	31/10/2026	51.31
NTS 33G06	CDC	2802101	Active	31/10/2026	51.31
NTS 33G06	CDC	2802102	Active	31/10/2026	51.31
NTS 33G06	CDC	2802103	Active	31/10/2026	51.31
NTS 33G06	CDC	2802104	Active	31/10/2026	51.3
NTS 33G06	CDC	2802105	Active	31/10/2026	51.3
NTS 33G06	CDC	2802106	Active	31/10/2026	51.3
NTS 33G06	CDC	2802107	Active	31/10/2026	51.3
NTS 33G06	CDC	2802108	Active	31/10/2026	51.3
NTS 33G06	CDC	2802109	Active	31/10/2026	51.3
NTS 33G06	CDC	2802110	Active	31/10/2026	51.3
NTS 33G06	CDC	2802111	Active	31/10/2026	51.3
NTS 33G06	CDC	2802112	Active	31/10/2026	51.3
NTS 33G06	CDC	2802113	Active	31/10/2026	51.3
NTS 33G06	CDC	2802114	Active	31/10/2026	51.3
NTS 33G06	CDC	2802115	Active	31/10/2026	51.3
NTS 33G06	CDC	2802116	Active	31/10/2026	51.29
NTS 33G06	CDC	2802117	Active	31/10/2026	51.29
NTS 33G06	CDC	2802118	Active	31/10/2026	51.29
NTS 33G06	CDC	2802119	Active	31/10/2026	51.29
NTS 33G06	CDC	2802120	Active	31/10/2026	51.29
NTS 33G06	CDC	2802121	Active	31/10/2026	51.29
NTS 33G06	CDC	2802122	Active	31/10/2026	51.29
NTS 33G06	CDC	2802123	Active	31/10/2026	51.29
NTS 33G06	CDC	2802124	Active	31/10/2026	51.29
NTS 33G06	CDC	2802125	Active	31/10/2026	51.29
NTS 33G06	CDC	2802126	Active	31/10/2026	51.29
NTS 33G06	CDC	2802127	Active	31/10/2026	51.29
NTS 33G06	CDC	2802128	Active	31/10/2026	51.33
NTS 33G06	CDC	2802129	Active	31/10/2026	51.33
NTS 33G06	CDC	2802130	Active	31/10/2026	51.33

NTS Sheet	Type	Title No	Status	Expiry Date	Area (Ha)
NTS 33G06	CDC	2802131	Active	31/10/2026	51.33
NTS 33G06	CDC	2802132	Active	31/10/2026	51.33
NTS 33G06	CDC	2802133	Active	31/10/2026	51.33
NTS 33G06	CDC	2802134	Active	31/10/2026	51.33
NTS 33G06	CDC	2802135	Active	31/10/2026	51.33
NTS 33G06	CDC	2802136	Active	31/10/2026	51.33
NTS 33G06	CDC	2802137	Active	31/10/2026	51.33
NTS 33G06	CDC	2802138	Active	31/10/2026	51.33
NTS 33G06	CDC	2802139	Active	31/10/2026	51.32
NTS 33G06	CDC	2802140	Active	31/10/2026	51.32
NTS 33G06	CDC	2802141	Active	31/10/2026	51.32
NTS 33G06	CDC	2802142	Active	31/10/2026	51.32
NTS 33G06	CDC	2802143	Active	31/10/2026	51.32
NTS 33G06	CDC	2802144	Active	31/10/2026	51.32
NTS 33G06	CDC	2802145	Active	31/10/2026	51.32
NTS 33G06	CDC	2802146	Active	31/10/2026	51.32
NTS 33G06	CDC	2802147	Active	31/10/2026	51.31
NTS 33G06	CDC	2802148	Active	31/10/2026	51.31
NTS 33G06	CDC	2802149	Active	31/10/2026	51.3

Appendix 2 – Staked Claims

NTS Sheet	Type	Title No	Status	Expiry Date	Area (Ha)
NTS 33G05	CDC	2820959	Active	21/02/2027	51.34
NTS 33G05	CDC	2820960	Active	21/02/2027	51.34
NTS 33G05	CDC	2820961	Active	21/02/2027	51.34
NTS 33G05	CDC	2820962	Active	21/02/2027	51.34
NTS 33G05	CDC	2820963	Active	21/02/2027	51.34
NTS 33G05	CDC	2820964	Active	21/02/2027	51.34
NTS 33G05	CDC	2820965	Active	21/02/2027	51.34
NTS 33G05	CDC	2820966	Active	21/02/2027	51.34
NTS 33G05	CDC	2820967	Active	21/02/2027	51.34
NTS 33G05	CDC	2820968	Active	21/02/2027	51.33
NTS 33G05	CDC	2820969	Active	21/02/2027	51.33
NTS 33G05	CDC	2820970	Active	21/02/2027	51.33
NTS 33G05	CDC	2820971	Active	21/02/2027	51.33
NTS 33G05	CDC	2820972	Active	21/02/2027	51.33
NTS 33G05	CDC	2820973	Active	21/02/2027	51.33
NTS 33G05	CDC	2820974	Active	21/02/2027	51.33
NTS 33G05	CDC	2820975	Active	21/02/2027	51.33
NTS 33G05	CDC	2820976	Active	21/02/2027	51.33
NTS 33G05	CDC	2820977	Active	21/02/2027	51.33
NTS 33G05	CDC	2820978	Active	21/02/2027	51.33
NTS 33G05	CDC	2820979	Active	21/02/2027	51.33
NTS 33G05	CDC	2820980	Active	21/02/2027	51.33
NTS 33G05	CDC	2820981	Active	21/02/2027	51.32
NTS 33G05	CDC	2820982	Active	21/02/2027	51.32
NTS 33G05	CDC	2820983	Active	21/02/2027	51.32
NTS 33G05	CDC	2820984	Active	21/02/2027	51.32
NTS 33G05	CDC	2820985	Active	21/02/2027	51.32
NTS 33G05	CDC	2820986	Active	21/02/2027	51.32
NTS 33G05	CDC	2820987	Active	21/02/2027	51.32
NTS 33G05	CDC	2820988	Active	21/02/2027	51.32
NTS 33G05	CDC	2820989	Active	21/02/2027	51.32
NTS 33G05	CDC	2820990	Active	21/02/2027	51.32
NTS 33G05	CDC	2820991	Active	21/02/2027	51.32
NTS 33G05	CDC	2820992	Active	21/02/2027	51.32
NTS 33G05	CDC	2820993	Active	21/02/2027	51.32
NTS 33G06	CDC	2820994	Active	21/02/2027	51.34
NTS 33G06	CDC	2820995	Active	21/02/2027	51.34
NTS 33G06	CDC	2820996	Active	21/02/2027	51.34
NTS 33G06	CDC	2820997	Active	21/02/2027	51.34
NTS 33G06	CDC	2820998	Active	21/02/2027	51.33
NTS 33G06	CDC	2820999	Active	21/02/2027	51.33
NTS 33G06	CDC	2821000	Active	21/02/2027	51.33
NTS 33G06	CDC	2821001	Active	21/02/2027	51.33

NTS Sheet	Type	Title No	Status	Expiry Date	Area (Ha)
NTS 33G06	CDC	2821002	Active	21/02/2027	51.33
NTS 33G06	CDC	2821003	Active	21/02/2027	51.33
NTS 33G06	CDC	2821004	Active	21/02/2027	51.33
NTS 33G06	CDC	2821005	Active	21/02/2027	51.33
NTS 33G06	CDC	2821006	Active	21/02/2027	51.33
NTS 33G06	CDC	2821007	Active	21/02/2027	51.33
NTS 33G06	CDC	2821008	Active	21/02/2027	51.33
NTS 33G06	CDC	2821009	Active	21/02/2027	51.33
NTS 33G06	CDC	2821010	Active	21/02/2027	51.33
NTS 33G06	CDC	2821011	Active	21/02/2027	51.33
NTS 33G06	CDC	2821012	Active	21/02/2027	51.33
NTS 33G06	CDC	2821013	Active	21/02/2027	51.32
NTS 33G06	CDC	2821014	Active	21/02/2027	51.32
NTS 33G06	CDC	2821015	Active	21/02/2027	51.32
NTS 33G06	CDC	2821016	Active	21/02/2027	51.32
NTS 33G06	CDC	2821017	Active	21/02/2027	51.32
NTS 33G06	CDC	2821018	Active	21/02/2027	51.32
NTS 33G06	CDC	2821019	Active	21/02/2027	51.32
NTS 33G06	CDC	2821020	Active	21/02/2027	51.32
NTS 33G06	CDC	2821021	Active	21/02/2027	51.32
NTS 33G06	CDC	2821022	Active	21/02/2027	51.32
NTS 33G06	CDC	2821023	Active	21/02/2027	51.32
NTS 33G06	CDC	2821024	Active	21/02/2027	51.32
NTS 33G06	CDC	2821025	Active	21/02/2027	51.32
NTS 33G06	CDC	2821026	Active	21/02/2027	51.32
NTS 33G06	CDC	2821027	Active	21/02/2027	51.32
NTS 33G06	CDC	2821028	Active	21/02/2027	51.31
NTS 33G06	CDC	2821029	Active	21/02/2027	51.31
NTS 33G06	CDC	2821030	Active	21/02/2027	51.31
NTS 33G06	CDC	2821031	Active	21/02/2027	51.31
NTS 33G06	CDC	2821032	Active	21/02/2027	51.31
NTS 33G06	CDC	2821033	Active	21/02/2027	51.31
NTS 33G06	CDC	2821034	Active	21/02/2027	51.31

JORC Code, 2012 – Table 1

Section 1 Sampling Techniques and Data – La Grande Project

(Criteria in this section apply to all succeeding sections.)

Criteria	JORC Code explanation	Commentary
Sampling techniques	<ul style="list-style-type: none"> Nature and quality of sampling (e.g. cut channels, random chips, or specific specialised industry standard measurement tools appropriate to the minerals under investigation, such as down hole gamma sondes, or handheld XRF instruments, etc). These examples should not be taken as limiting the broad meaning of sampling. Include reference to measures taken to ensure sample representivity and the appropriate calibration of any measurement tools or systems used. Aspects of the determination of mineralisation that are Material to the Public Report. In cases where 'industry standard' work has been done this would be relatively simple (e.g. 'reverse circulation drilling was used to obtain 1 m samples from which 3 kg was pulverised to produce a 30 g charge for fire assay'). In other cases, more explanation may be required, such as where there is coarse gold that has inherent sampling problems. Unusual commodities or mineralisation types (e.g. submarine nodules) may warrant disclosure of detailed information. 	<ul style="list-style-type: none"> In connection with this announcement no sampling has been conducted.
Drilling techniques	<ul style="list-style-type: none"> Drill type (eg core, reverse circulation, open-hole hammer, rotary air blast, auger, Bangka, sonic, etc) and details (eg core diameter, triple or standard tube, depth of diamond tails, face-sampling bit or other type, whether core is oriented and if so, by what method, etc). 	<ul style="list-style-type: none"> In connection to this announcement no drilling has been conducted and no drill assays are being reported.
Drill sample recovery	<ul style="list-style-type: none"> Method of recording and assessing core and chip sample recoveries and results assessed. Measures taken to maximise sample recovery and ensure representative nature of the samples. <p>Whether a relationship exists between sample recovery and grade and whether sample bias may have occurred due to preferential loss/gain of fine/coarse material.</p>	<ul style="list-style-type: none"> In connection to this announcement no drilling has been conducted and no drill assays are being reported.

Criteria	JORC Code explanation	Commentary
Logging	<ul style="list-style-type: none"> Whether core and chip samples have been geologically and geotechnically logged to a level of detail to support appropriate Mineral Resource estimation, mining studies and metallurgical studies. Whether logging is qualitative or quantitative in nature. Core (or costean, channel, etc) photography. The total length and percentage of the relevant intersections logged. 	<ul style="list-style-type: none"> In connection to this announcement no drilling or sampling has been conducted and no results are being reported.
Subsampling techniques and sample preparation	<ul style="list-style-type: none"> If core, whether cut or sawn and whether quarter, half or all core taken. If non-core, whether riffled, tube sampled, rotary split, etc and whether sampled wet or dry. For all sample types, the nature, quality and appropriateness of the sample preparation technique. Quality control procedures adopted for all subsampling stages to maximise representivity of samples. Measures taken to ensure that the sampling is representative of the in-situ material collected, including for instance results for field duplicate/second-half sampling. Whether sample sizes are appropriate to the grain size of the material being sampled. 	<ul style="list-style-type: none"> In connection with this announcement no drilling or sampling has been conducted and no results are being reported.

Criteria	JORC Code explanation	Commentary
Quality of assay data and laboratory tests	<ul style="list-style-type: none"> The nature, quality and appropriateness of the assaying and laboratory procedures used and whether the technique is considered partial or total. For geophysical tools, spectrometers, handheld XRF instruments, etc, the parameters used in determining the analysis including instrument make and model, reading times, calibrations factors applied and their derivation, etc. Nature of quality control procedures adopted (e.g., standards, blanks, duplicates, external laboratory checks) and whether acceptable levels of accuracy (i.e., lack of bias) and precision have been established. 	<ul style="list-style-type: none"> In connection with this announcement no drilling or sampling has been conducted and no assays are being reported.
Verification of sampling and assaying	<ul style="list-style-type: none"> The verification of significant intersections by either independent or alternative company personnel. The use of twinned holes. Documentation of primary data, data entry procedures, data verification, data storage (physical and electronic) protocols. Discuss any adjustment to assay data. 	<ul style="list-style-type: none"> Geophysical images have been downloaded from online public government data resources (Quebec Government Stratigraphic Surveys) and aerial satellite imagery from Bing. Bing Maps. (n.d.). Retrieved from https://www.bing.com/maps ESRI. (2024). World Topographic Map. Retrieved from https://cdn.arcgis.com/sharing Ministère des Ressources naturelles et des Forêts (MRNF), 2024 - Interactive map. MRNF, Québec; Online products and services - Mines, Interactive Map. In connection with this announcement no drilling has been conducted and no drill assays are being reported.
Location of data points	<ul style="list-style-type: none"> Accuracy and quality of surveys used to locate drill holes (collar and down-hole surveys), trenches, mine workings and other locations used in Mineral Resource estimation. Specification of the grid system used. Quality and adequacy of topographic control. 	<ul style="list-style-type: none"> The grid datum is NAD 1983 UTM Zone 18N In connection to this announcement no drilling has been conducted and no location or data points of drill holes reported.
Data spacing and distribution	<ul style="list-style-type: none"> Data spacing for reporting of Exploration Results. Whether the data spacing, and distribution is sufficient to establish the degree of geological and grade continuity appropriate for the Mineral Resource and Ore Reserve estimation procedure(s) and classifications applied. Whether sample compositing has been applied. 	<ul style="list-style-type: none"> In connection to this announcement no drilling has been conducted and no location or data points of drill holes reported. Government geophysical imagery varies in data spacing but is considered at an appropriate density to make observations reported in the announcement.

Criteria	JORC Code explanation	Commentary
Orientation of data in relation to geological structure	<ul style="list-style-type: none"> Whether the orientation of sampling achieves unbiased sampling of possible structures and the extent to which this is known, considering the deposit type. If the relationship between the drilling orientation and the orientation of key mineralized structures is considered to have introduced a sampling bias, this should be assessed and reported if material. 	<ul style="list-style-type: none"> In connection with this announcement no sampling or drilling has been conducted, therefore no orientation data is generated in relation to geological structures.
Sample security	<ul style="list-style-type: none"> The measures taken to ensure sample security. 	<ul style="list-style-type: none"> Not applicable to this announcement.
Audits or reviews	<ul style="list-style-type: none"> The results of any audits or reviews of sampling techniques and data. 	<ul style="list-style-type: none"> No audits or review have been undertaken.

Section 2 Reporting of Exploration Results – La Grande Project

(Criteria listed in the preceding section also apply to this section.)

Criteria	JORC Code explanation	Commentary
Mineral tenement and land tenure status	<ul style="list-style-type: none"> Type, reference name/number, location and ownership including agreements or material issues with third parties such as joint ventures, partnerships, overriding royalties, native title interests, historical sites, wilderness or national park and environmental settings. The security of the tenure held at the time of reporting along with any known impediments to obtaining a licence to operate in the area. 	<ul style="list-style-type: none"> The La Grande Project consists of 729 continuous claims covering an area of 37,168 hectares. The Joule, Aero, Aqua and La Grande East Properties which forms part of La Grande Project is 100% owned by James Bay Minerals Ltd.
Exploration done by other parties	<ul style="list-style-type: none"> Acknowledgment and appraisal of exploration by other parties. 	<ul style="list-style-type: none"> The La Grande Project is a greenfield project with limited historical exploration. All data obtained on the properties has been generated by Quebec Government Stratigraphic surveys.
Geology	<ul style="list-style-type: none"> Deposit type, geological setting and style of mineralisation. 	<ul style="list-style-type: none"> The geology of the Project is relatively unexplored. The primary type of mineralization suggested by the data and mineralization on the adjacent properties is lithium-bearing spodumene which occurs in granite pegmatite and aplite dykes. The property sits within three key geological ingredients which make it prospective to large LCT pegmatites. These are: <ul style="list-style-type: none"> Right Archean Rock Age Large deformation zones Proximity to Greenstone Belts

Criteria	JORC Code explanation	Commentary
Drill hole Information	<ul style="list-style-type: none"> A summary of all information material to the understanding of the exploration results including a tabulation of the following information for all Material drill holes: <ul style="list-style-type: none"> o easting and northing of the drill hole collar o elevation or RL (Reduced Level – elevation above sea level in metres) of the drill hole collar o dip and azimuth of the hole o down hole length and interception depth o hole length. If the exclusion of this information is justified on the basis that the information is not Material and this exclusion does not detract from the understanding of the report, the Competent Person should clearly explain why this is the case 	<ul style="list-style-type: none"> No drilling activities have been undertaken or reported to date.
Data aggregation methods	<ul style="list-style-type: none"> In reporting Exploration Results, weighting averaging techniques, maximum and/or minimum grade truncations (e.g., cutting of high grades) and cut-off grades are usually Material and should be stated. Where aggregate intercepts incorporate short lengths of high-grade results and longer lengths of low-grade results, the procedure used for such aggregation should be stated and some typical examples of such aggregations should be shown in detail. The assumptions used for any reporting of metal equivalent values should be clearly stated 	<ul style="list-style-type: none"> No drilling activities have been undertaken or reported to date.
Relationship between mineralisation widths and intercept lengths	<ul style="list-style-type: none"> These relationships are particularly important in the reporting of Exploration Results. If the geometry of the mineralisation with respect to the drill hole angle is known, its nature should be reported. If it is not known and only the down hole lengths are reported, there should be a clear statement to this effect (e.g., 'down hole length, true width not known'). 	<ul style="list-style-type: none"> No drilling activities have been undertaken or reported to date. Pegmatites outcrops stated in the announcement are interpretations based off satellite imagery and geological interpretation and remain to be confirmed in the field.
Diagrams	<ul style="list-style-type: none"> Appropriate maps and sections (with scales) and tabulations of intercepts should be included for any significant discovery being reported. These should include, but not be limited to a plan view of drill hole collar locations and appropriate sectional views. 	<ul style="list-style-type: none"> Appropriate maps and figures have been included in this announcement.
Balanced reporting	<ul style="list-style-type: none"> Where comprehensive reporting of all Exploration Results is not practicable, representative reporting of both low and high grades and/or widths should be practiced to avoid misleading reporting of Exploration Results 	<ul style="list-style-type: none"> Exploration targets are interpretations based on desktop work only. Public government geophysical surveys (sourced from Quebec Government Stratigraphic Surveys) and publicly available satellite imagery (Bing satellite imagery) have been obtained from free online resources.

Criteria	JORC Code explanation	Commentary
Other substantive exploration data	<ul style="list-style-type: none"> Other exploration data, if meaningful and material, should be reported including (but not limited to): geological observations; geophysical survey results; geochemical survey results; bulk samples – size and method of treatment; metallurgical test results; bulk density, groundwater, geotechnical and rock characteristics; potential deleterious or contaminating substances 	<ul style="list-style-type: none"> All relevant and material exploration data for the target areas discussed, have been reported or referenced.
Further work	<ul style="list-style-type: none"> The nature and scale of planned further work (e.g., tests for lateral extensions or depth extensions or large-scale step-out drilling). Diagrams clearly highlighting the areas of possible extensions, including the main geological interpretations and future drilling areas, provided this information is not commercially sensitive. 	<ul style="list-style-type: none"> Further work will include but not limited to systematic geological mapping, rock chip sampling, soil sampling, pXRF measurements, geophysics, structural interpretation and drilling to identify suitable host rock geology and structural architecture.