

Positioned for success

April 2024

Investor presentation



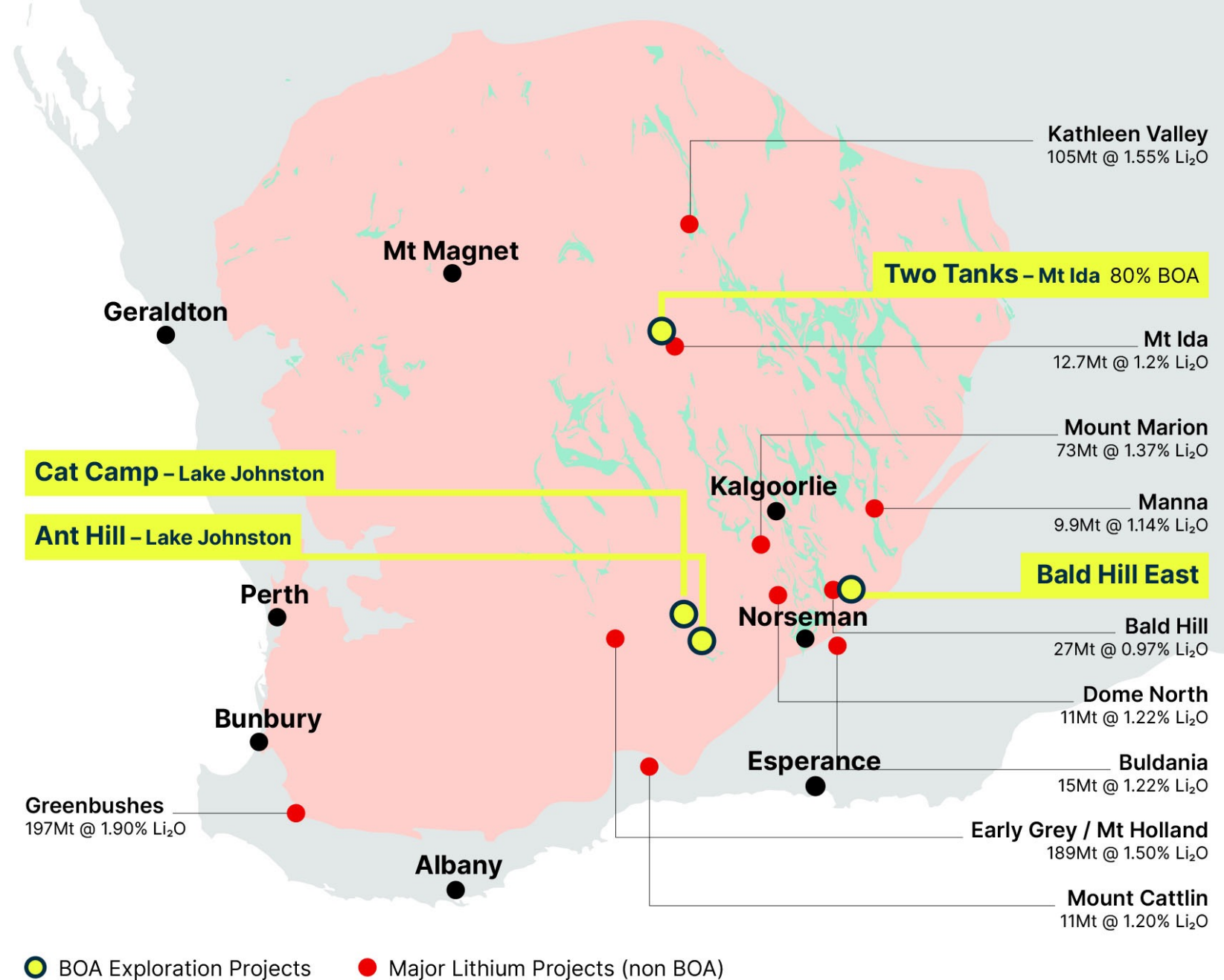
Resources

WA lithium



Four tenements in proven geological provinces housing world-class mineral deposits

Drilling three tenements in 2024



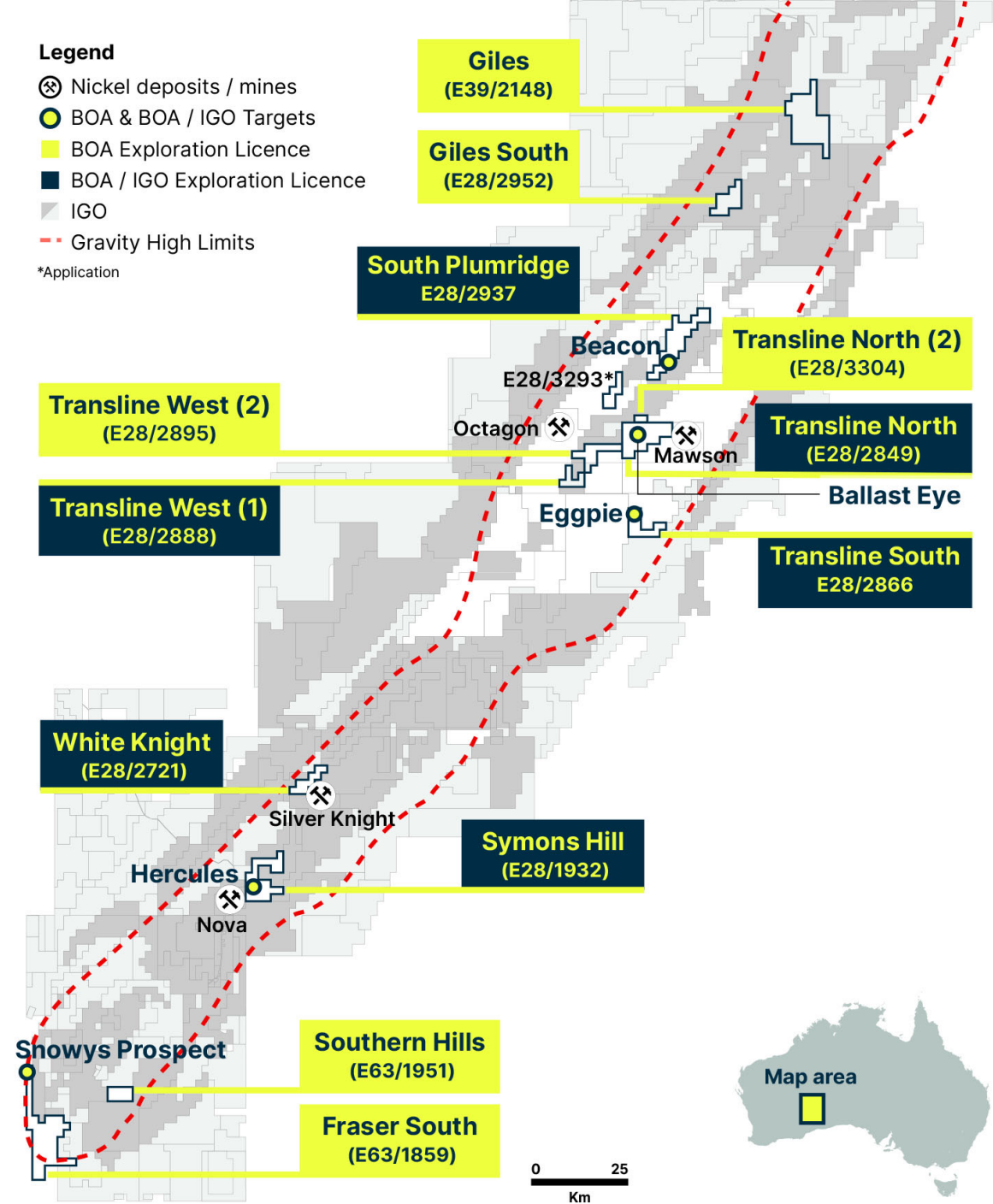
WA nickel



Twelve tenements in the highly prospective Fraser Range, WA

IGO operate six tenements under agreement with BOA

BOA drilling Snowys Prospect in 2024



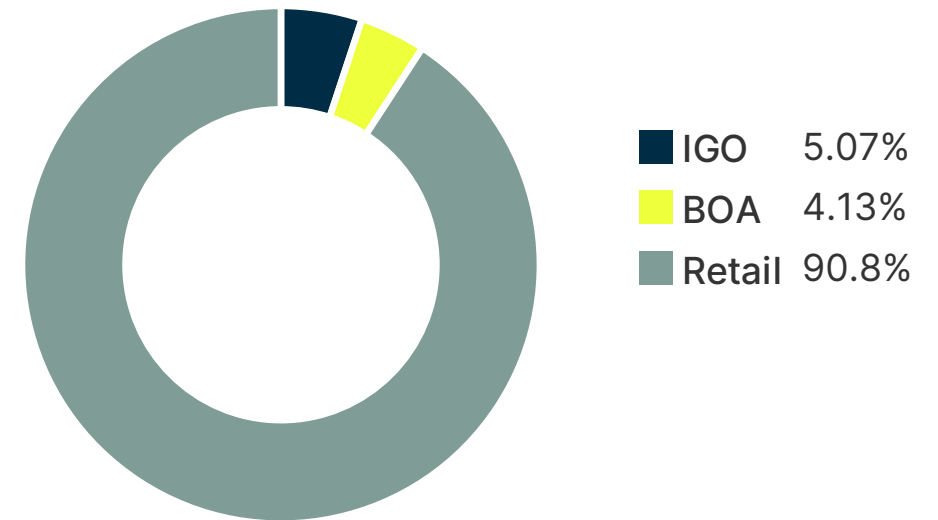
BOA Resources – company overview

Capital structure (COB 8 April 2024)	
Shares on issue ¹	123,352,847
Share price	\$0.029
Market capitalisation	\$3.58M
Top 30 shareholders	46%
Total number of shareholders	967
Debt	\$0
Cash ²	\$2.289M

1. Excluding 25,867,322 listed options; 20,720,549 unlisted options

2. BOA quarterly to ASX released 31 January 2024

Share ownership



**Fully funded for extensive
2024 drilling program**

Our people

Board and team with extensive experience in capital markets, resource exploration and discovery and growing shareholder value.

Board



Cath Norman
Chair, Managing Director



Graeme Purcell
Director



James Barrie
Director, Company Secretary

Management

Nik Karakachov
Exploration Manager (WA)

Edge Topaccio
Group Accountant

Yolanda Torrasi
Investor Relations

Unlocking value for shareholders



Focused on discovery

- **Focus on lithium (Li) and nickel (Ni) exploration and discovery in Western Australia**
- Li and Ni are critical minerals essential for the global energy transition
- Additional associated gold, copper and cobalt exploration targets



Highly prospective geology

- Exploring for Ni with partner IGO in Fraser Range, WA, including potential extensions to Nova style mineralisation
- **Li focused tenements in the proven geological provinces of Lake Johnston, Mt Ida and Eastern Goldfields of WA**



Funded for 2024 drilling

- **2024 drilling program under way**
- Free carried by IGO over 6 Fraser Range tenements
- Cash and shares from recent sale of interests in Queensland

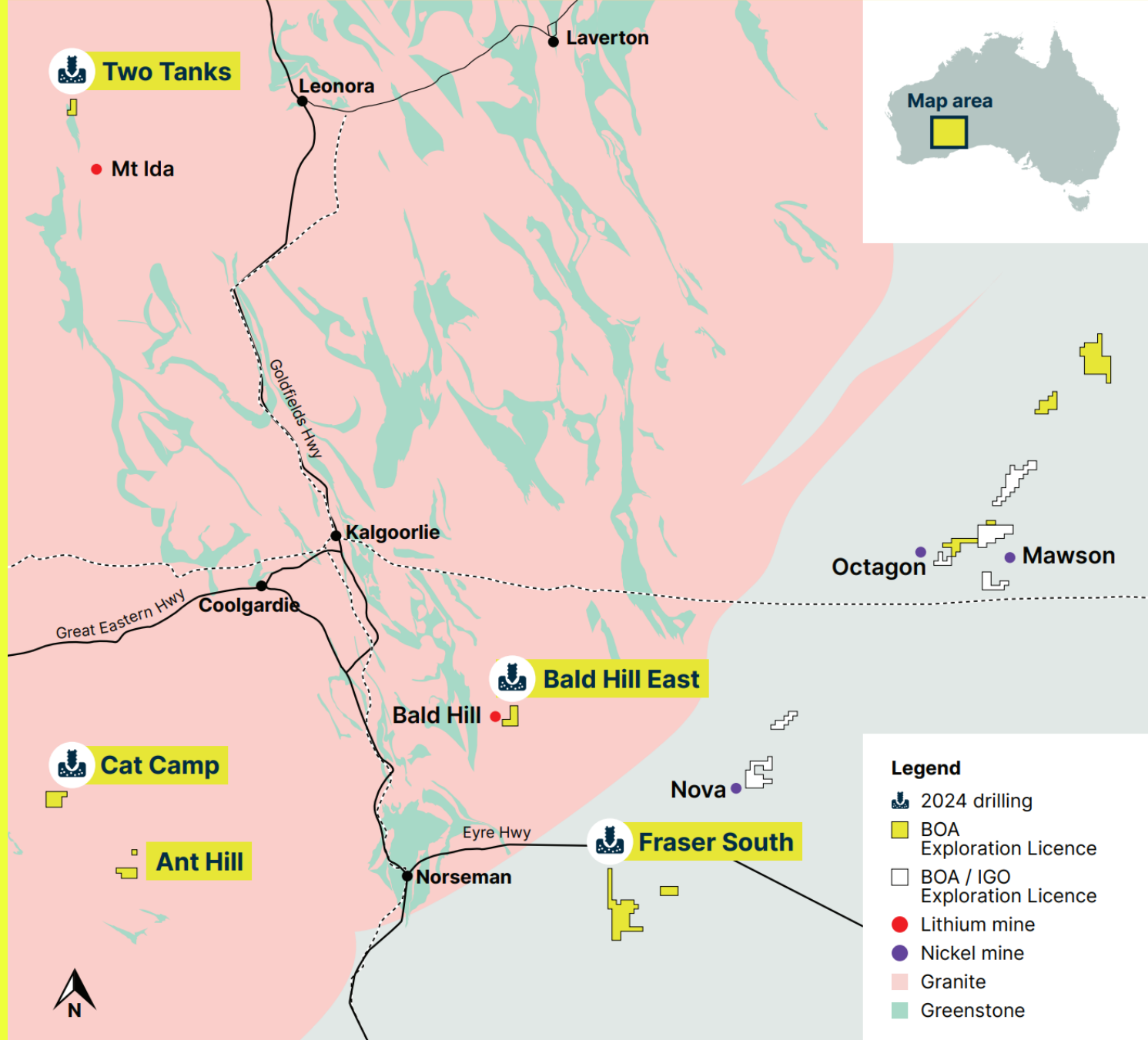
2024 drilling program

Li

Two Tanks
Cat Camp
Bald Hill East

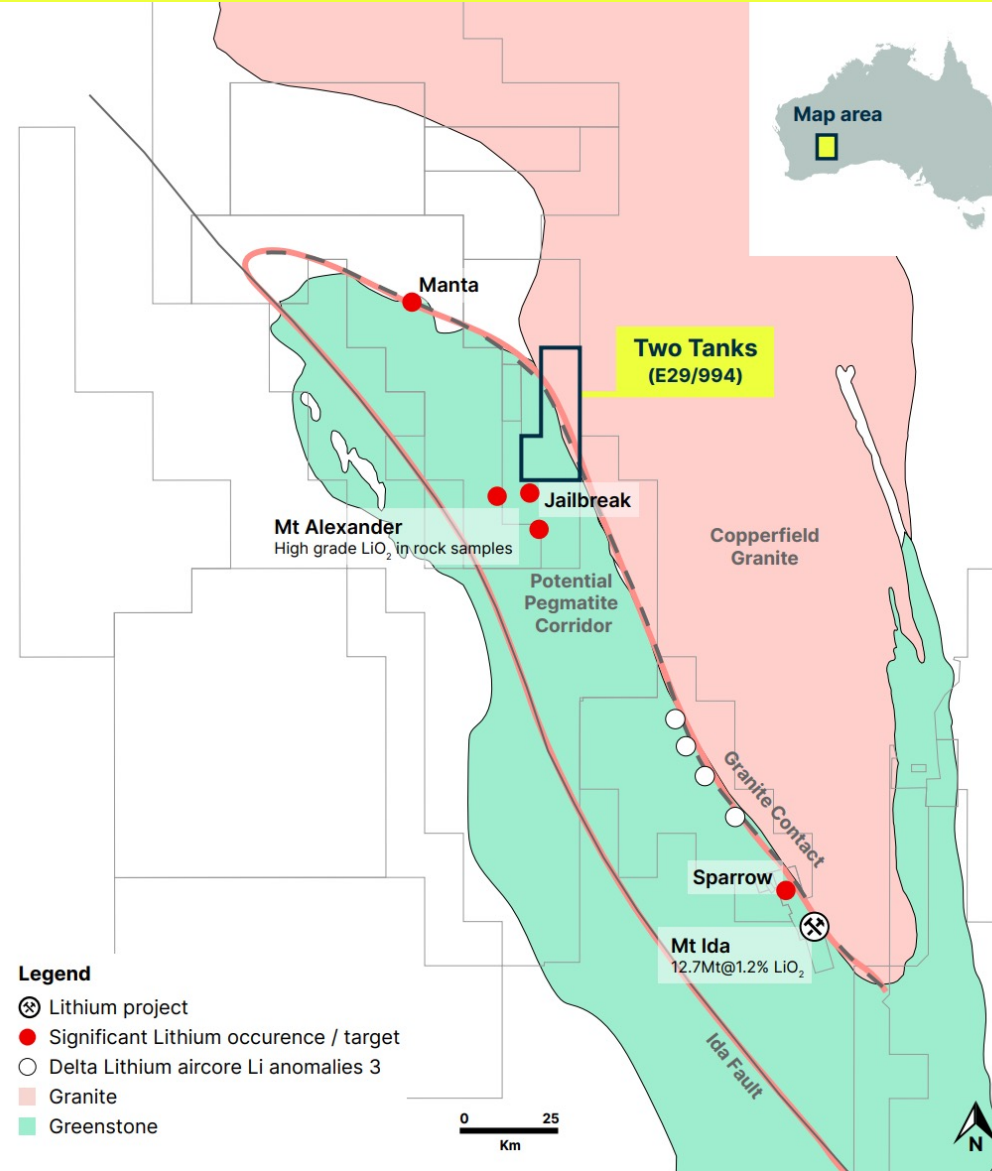
Ni

Fraser South



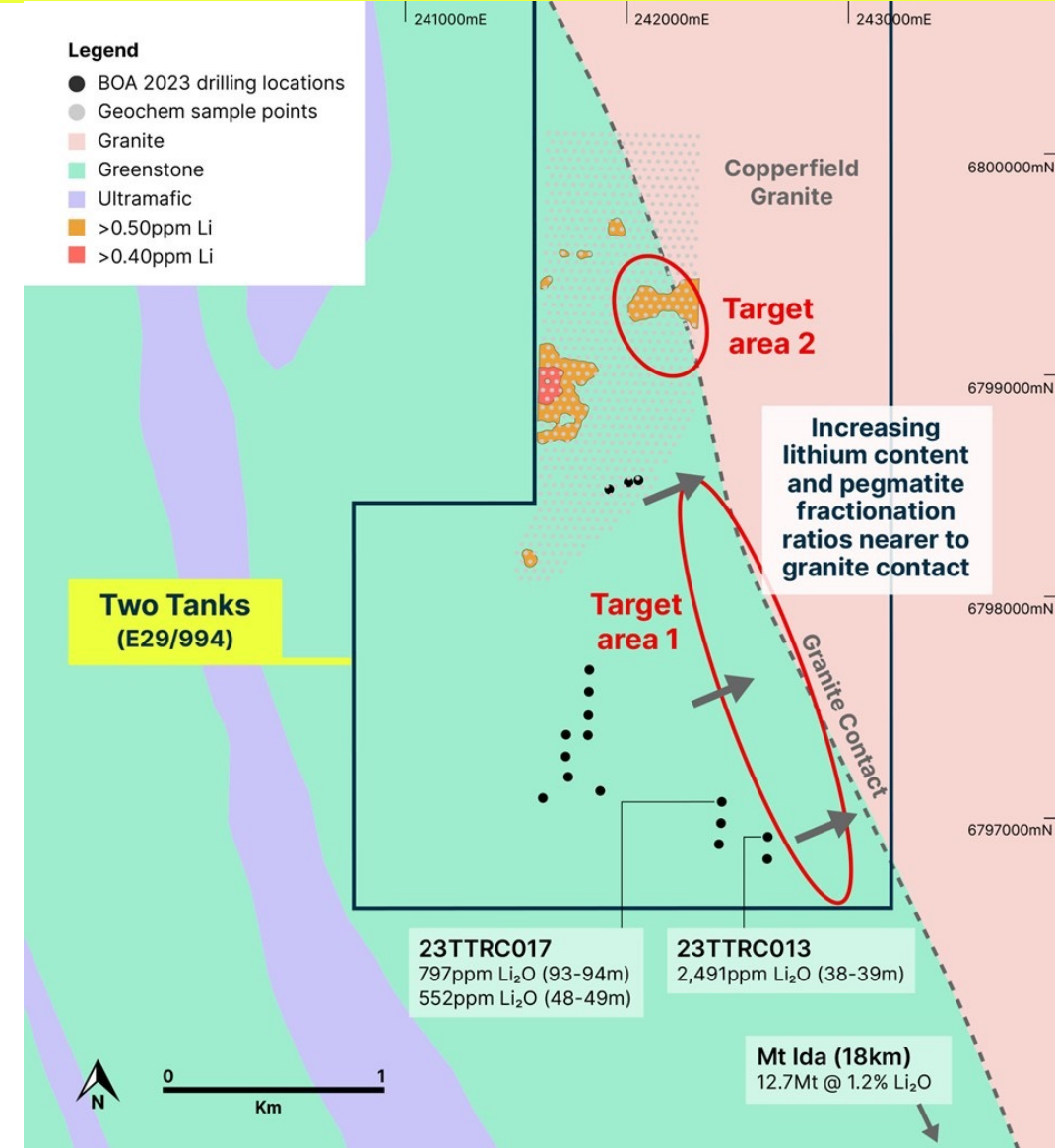
Two Tanks E29/994

- Located in the Mt Ida province in an emerging pegmatite corridor
- Pegmatites exposed at surface



Two Tanks: drilling focused on high grade targets

- Multiple, fertile pegmatites intersected during 2023 20-hole drilling program: intersected Li up to 2,491ppm Li_2O
- Potential for higher Li grades closer to the contact between the Copperfield Granite and the greenstones
- Planning 22 holes for ~2000m drilling
- Assay results likely end of May



Two Tanks: rig on site

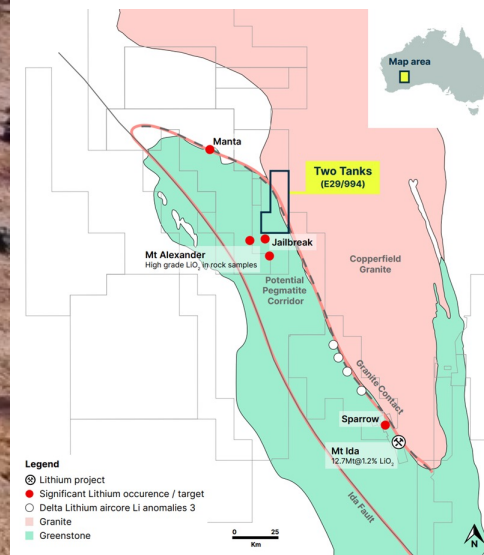
Li



DJI_0657.MP4

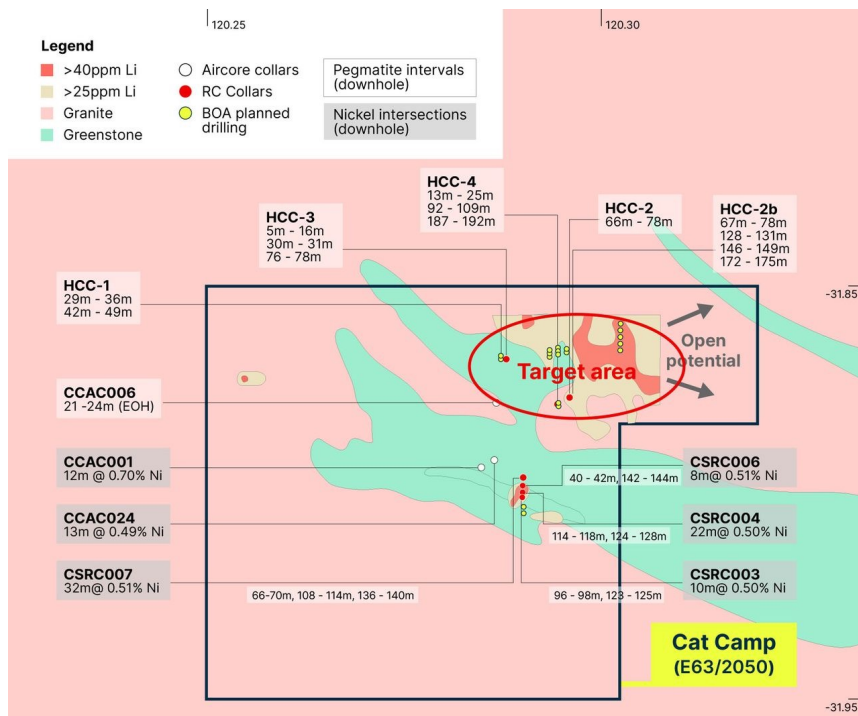
ASX: BOA

570kms
northeast
of Perth



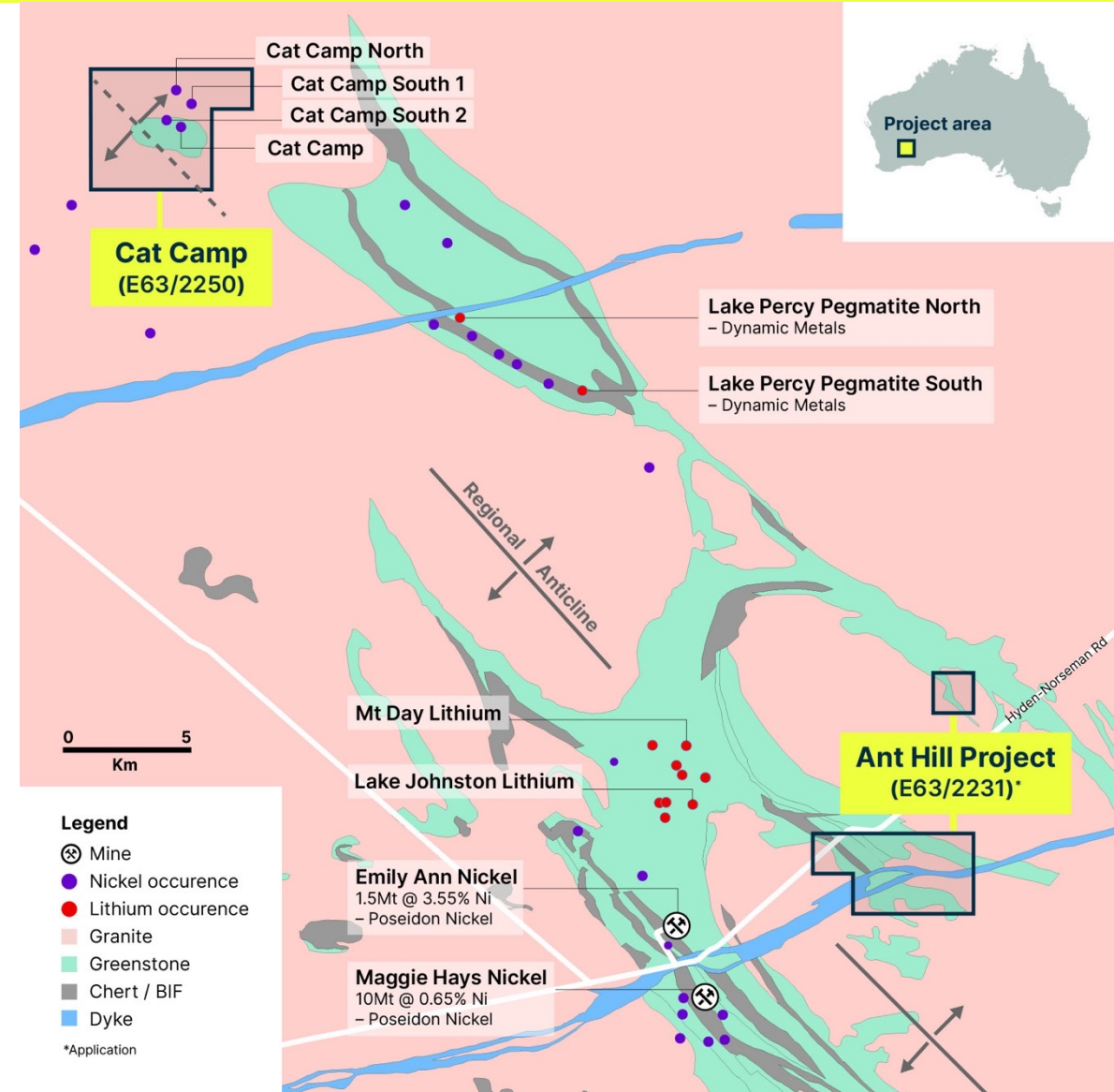
Cat Camp E63/2050: known pegmatites supported by geochemistry

- Eastern Goldfields / Lake Johnston region, WA
- Known pegmatites and nickel mineralisation, local pegmatites are shallow and thick
- Encouraging geochemical mapping identified the Target Area for further drilling



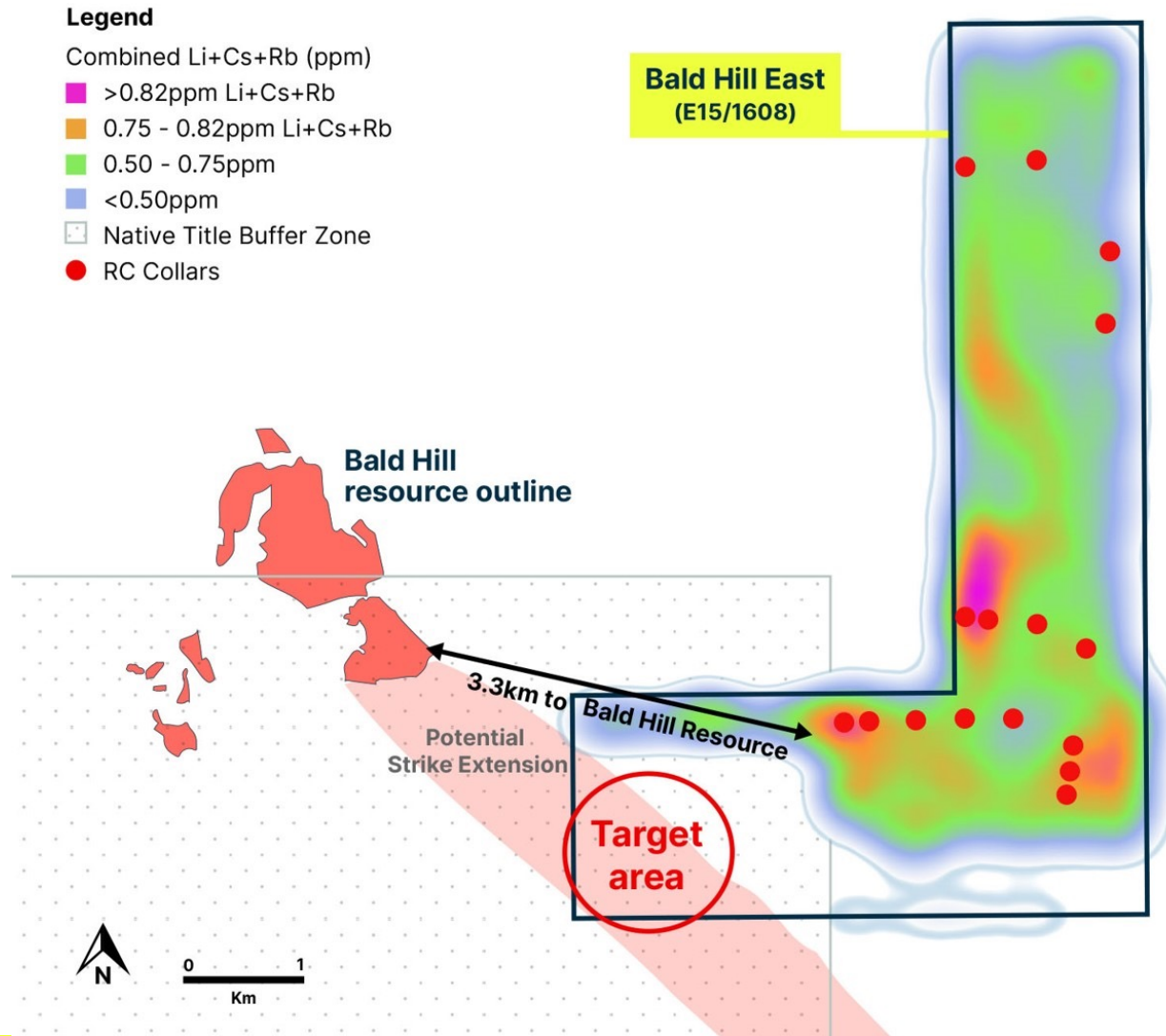
2023
Geochemical
mapping

2024 drilling
planned for
21 holes for
1,800 metres
over target area

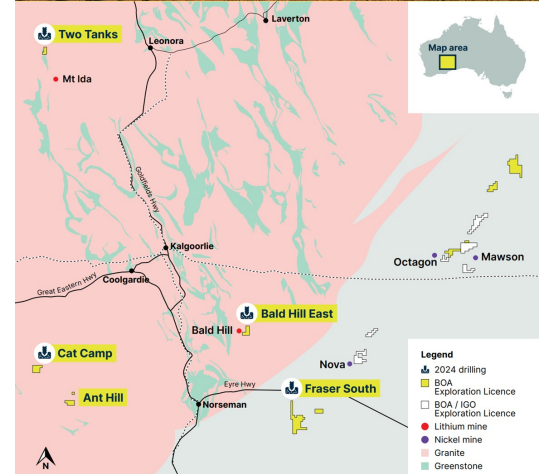


Bald Hill East E15/1608: potential extension of Bald Hill mineralisation

- Located approximately 3kms from the Bald Hill lithium mine (26.5Mt @ 1% Li₂O resource)
- Potential strike extension of Bald Hill mineralisation mapped into the Bald Hill East tenement – **focus area for 2024 drilling**
- Numerous new Li discoveries and deal flow
- Heritage access agreement executed with Ngadju Native Title Corporation



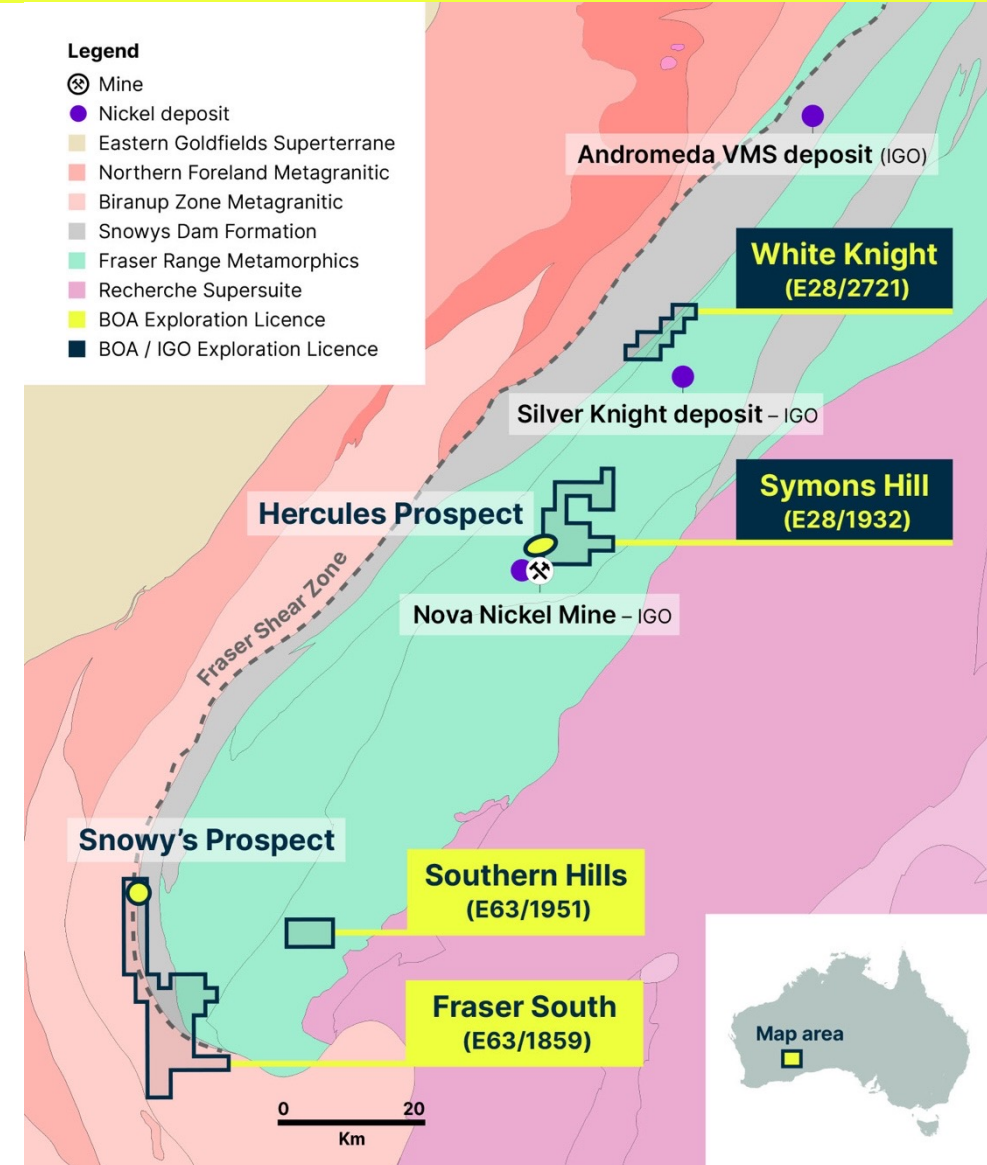
Mineral Resources Ltd's Bald Hill mine (from website)



Fraser South E63/1859: Snowys Prospect

Ni

- EM survey at Fraser South identified a highly conductive anomaly: Snowy's Prospect
- Massive sulphides in mafic and ultramafic intrusions in the Fraser Range are the host rocks for Ni, Zn, Cu and Co mineralisation which is highly conductive
- Potential for Nova (Ni-Cu-Co) or Andromeda (Ni-Zn) style Volcanogenic Massive Sulphides (VMS) mineralisation systems at Snowys
- The anomaly is easily drilled with an estimated depth of 170m
- Heritage agreement signed and CMP submitted for approval
- **Drilling planned for Q3 2024**



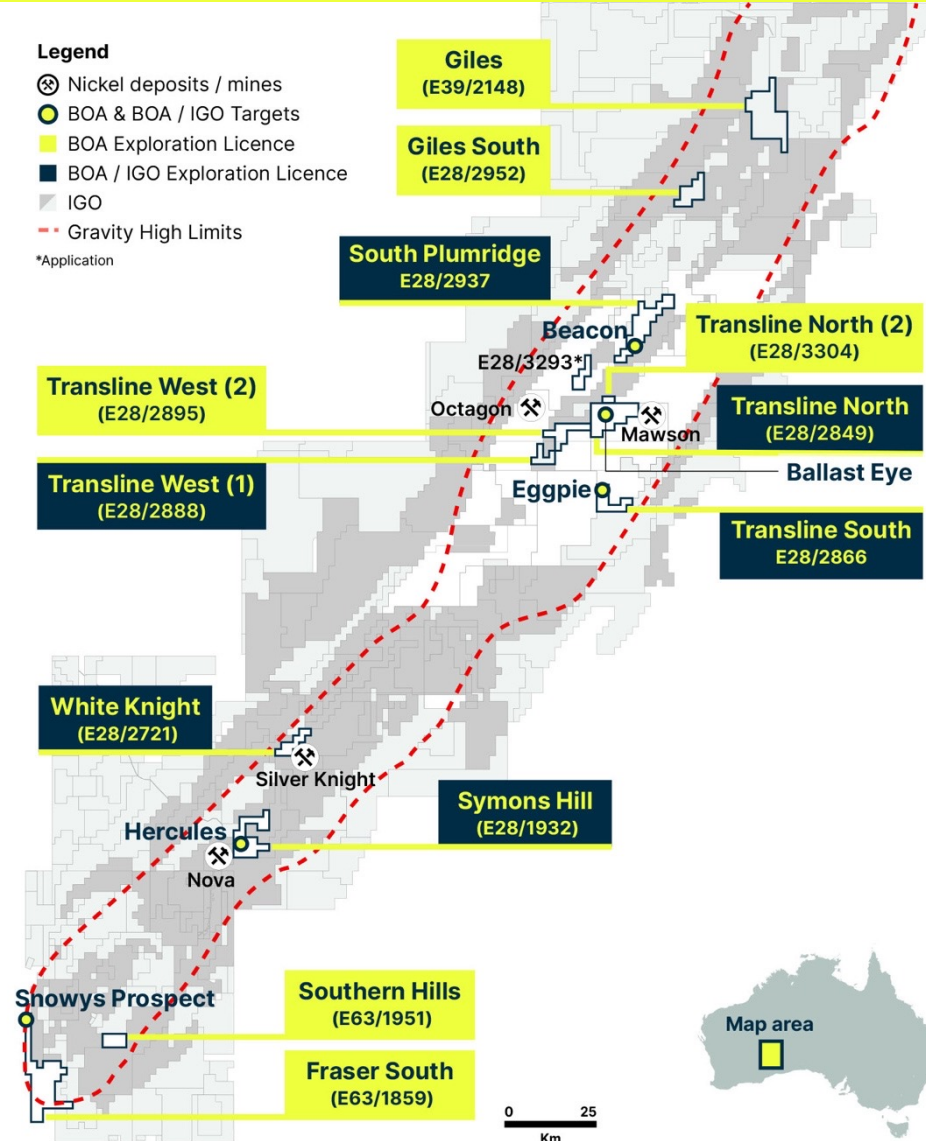
Promising results on IGO operated tenements

Eggpie (Transline South) and Ballast Eye (Transline North) Prospects

- IGO drilling completed 2023 and 2022
- Assays indicate medium to high prospectivity for Ni-Cu-Co bearing mafic-ultramafic rocks
- EM program planned to define mineralisation

Hercules (Symons Hill)

- Adjacent to the Nova-Bollinger mining lease
- Hercules, Orion and Elara mafic and ultramafic intrusions from EM and 3D seismic data acquired over the Nova ML
- These units have potential to host Nova style mineralisation and extend into Symons Hill
- Geophysical surveys proposed to be extended into Symons Hill



Sulphides identified from drilling the Eggpie Prospect, late 2023



Positioned for exploration success in 2024

		Q1	Q2	Q3	Q4	
Li	Two Tanks	Site preparation	Drilling	Drilling evaluation		
	Cat Camp		Site preparation	Drilling	Drilling evaluation	
	Bald Hill East		Site preparation	Drilling	Drilling evaluation	
	Ant Hill¹			Geochemical sampling and studies		
Ni	Fraser South			Site preparation	Drilling	Drilling evaluation
	Transline North²	Moving Loop Electromagnetic survey planning, acquisition and evaluation				
	Transline South²	Moving Loop Electromagnetic survey planning, acquisition and evaluation				
	Symons Hill²	Proposed geophysical survey planning, acquisition and evaluation				
	Other	Regional evaluation and assessment				
Other	Paterson Region	Regional evaluation and seek partner				
	Tasmania	Geochemical sampling/Follow up studies				

1. Granted, awaiting final award

2. Program timing to be determined by IGO

What makes BOA the Belle of Australia



Positioned for success

- Portfolio located in proven geological provinces housing world class mineral deposits
- Agreement with IGO to fund nickel exploration until 2025
- Drilling under way – fully funded for extensive 2024 program



Executing our strategy

- Strategy focused on exploration and discovery of lithium and nickel in WA
- Board with track record in capital markets, exploration, discovery and delivering shareholder value



Future facing industry

- Exposed to critical minerals essential for the global energy transition

Contact us

Cath Norman

Chair, Managing Director
+61 407 087176

info@boaresources.com
boaresources.com

Yolanda Torrasi

Investor Relations
+61 412 261 870



BOA Resources

Disclaimer

Forward Looking Statements

This presentation is not an offer for financial products in any jurisdiction or a financial product recommendation. The information in this presentation is an overview and does not contain all information necessary for investment decisions. In making investment decisions in connection with any acquisition of financial products, investors should rely on their own examination of Boadicea Resources Ltd (“Boadicea”, “BOA” or the “Company”) and consult with their own legal, tax, business and/or financial advisers.

The information contained in this presentation has been prepared in good faith by the Company. However, no representation or warranty expressed or implied is made as to the accuracy, correctness, completeness or adequacy of any statements, estimates, opinions or other information contained in this presentation. To the maximum extent permitted by law, Boadicea, its directors, officers, employees and agents disclaim liability for any loss or damage which may be suffered by any person through the use or reliance on anything contained in or omitted in this presentation.

Certain information in this presentation refers to the intentions of Boadicea, but these are not intended to be forecasts, forward looking statements or statements about future matters for the purposes of the Corporations Act or any other applicable law. The occurrence of events in the future are subject to risks, uncertainties and other factors that may cause the Company’s actual results, performance or achievements to differ from those referred to in this presentation. Accordingly, Boadicea, its directors, officers, employees and agents do not give any assurance or guarantee that the occurrence of the events referred to in this presentation will occur as contemplated.

Competent Persons Statements

The information in this presentation that relates to Exploration Results for the Western Australian based projects was compiled by Graeme Purcell. Graeme Purcell is a member of the Australian Institute of Geoscientists and is a part time consultant and non-executive director to Boadicea. Graeme Purcell has sufficient experience which is relevant to the style of mineralisation and type of deposit under consideration and to the activity being undertaken to qualify as a Competent Person as defined in the 2012 Edition of the ‘Australasian Code for Reporting of Exploration Results, Minerals Resources and Ore Reserves’. Graeme Purcell consents to the inclusion in the Report of the matters based on the information in the form and context in which it appears.

The information in this presentation that relates to Geophysical Results is based on information compiled by Karen Gilgallon, Principal Geophysicist at Southern Geoscience Consultants. Karen Gilgallon is a Member of the Australasian Institute of Geoscientists (AIG) and has sufficient experience which is relevant to the style of mineralisation and type of deposit under consideration and to the activity which he is undertaking to qualify as a Competent Person as defined in the 2012 Edition of the ‘Australasian Code for Reporting of Exploration Results, Mineral Resources and Ore Reserves’. Karen Gilgallon consents to the inclusion in the release of the matters based on this information in the form and context in which it appears.