

## WEST ARUNTA PROJECT - DRILLING TO RESTART

### HIGHLIGHTS

- DDH1 Drilling and Rincon personnel have remobilised to site to restart the Pokali diamond drilling program.
- The second diamond hole (24WADD002), located at Pokali East, is expected to commence this weekend, and take up to two weeks to complete.
- The drill core from the first hole (24WADD001) has arrived in Perth to be processed and sampled, with assay results expected in May.
- Reverse circulation ('RC') drilling is expected to commence mid-April.
- Atlas Geophysics have completed all gravity and passive seismic surveys over target areas at Pokali, K1/K2 and Passel.
- Geophysics consultant Resource Potentials are reviewing and modelling the newly acquired geophysics data, with outcomes expected imminently.
- Zonge Engineering and Research Organisation (Zonge) are also mobilising to site to complete an inverse polarisation dipole-dipole ('DDIP') survey over the Pokali Prospect area.

**Rincon Resources Limited** (ASX: RCR) ("**Rincon**" or "**the Company**") is pleased to provide an update on its exploration activities at the West Arunta Project in the West Arunta region of Western Australia.

After a short delay due to ex-cyclone Megan, the key access route from Alice Springs to the West Arunta Project has now re-opened to light vehicles, permitting all personnel to remobilise to site and recommence diamond drilling, site works for RC drilling, and the remainder of the geophysics surveys.

**Rincon's Managing Director, Gary Harvey said:**

*"We are very pleased to be restarting our activities at West Arunta with diamond drilling and site works to start in a matter of days along with the last of our geophysics surveys, and the RC drilling to kick off in a week or so.*

*"We also eagerly anticipate the imminent results from the interpretation of our gravity and passive seismic surveys by our consultants Resource Potentials. Importantly, this will most certainly see some variation to our forthcoming RC program, and likely require new approvals for future RC programs.*

*"This all follows the recent completion of our first diamond hole at Pokali North which successfully tested a gravity/magnetic anomaly target with preliminary pXRF analysis confirming the presence of widespread elevated copper throughout the hole (refer to ASX: RCR Announcement dated 26 March 2024). This hole has now arrived in Perth and will be processed for sampling and analysis as soon as possible. No doubt, there will be more said about this first hole soon now that we can reconcile geology, new geophysics data, and additional data we'll collect using the GEOTEK BoxScan system at Galt Mining Solutions."*



## Diamond Drilling

Structural data derived from the recently completed diamond hole, '24WADD001', showed that high-tenure copper sulphide bearing veins predominantly dipped steeply to the north. Based on this data, the Company has determined that repositioning the second diamond hole to drill from north to south will test the second target at Pokali East more effectively (refer to Figures 1 and 2).

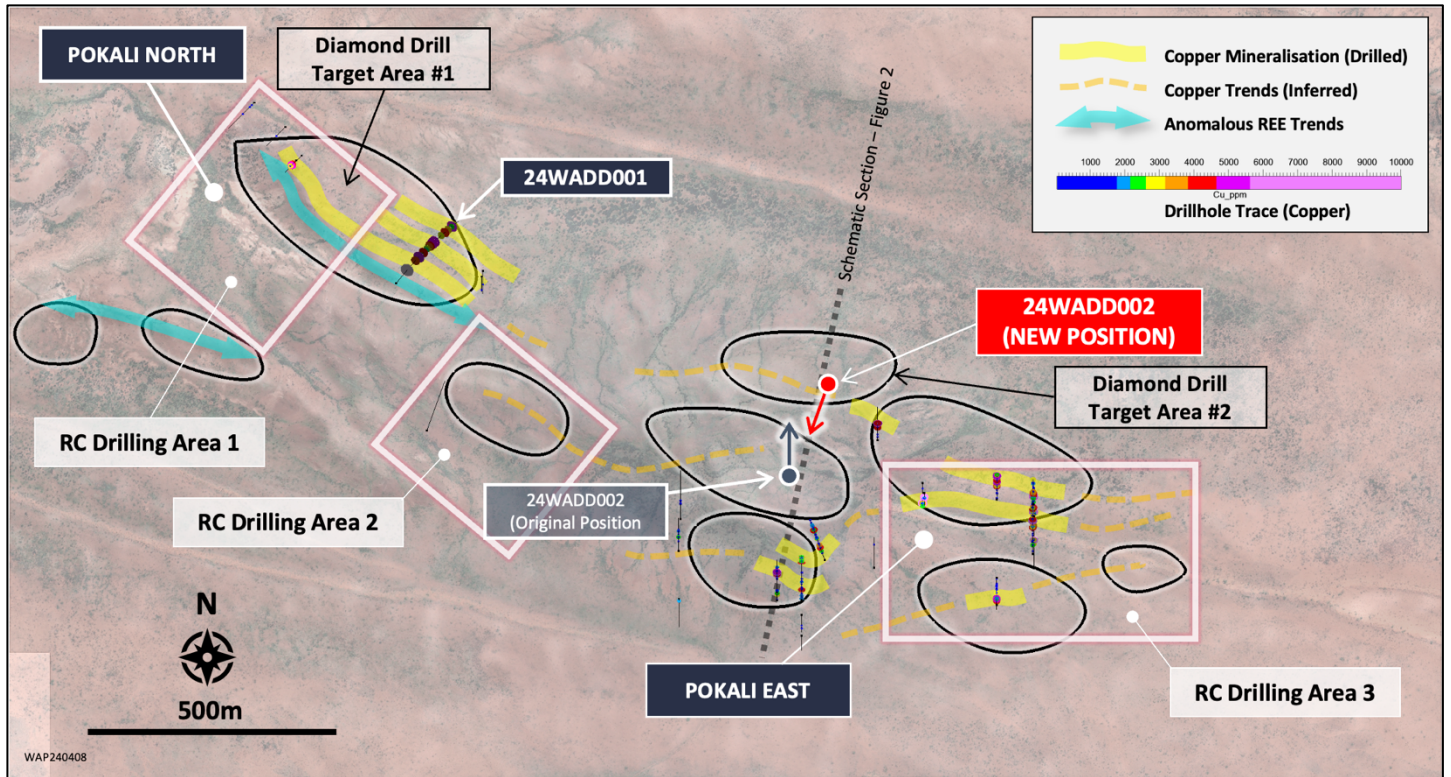


Figure 1 – Aerial image of Pokali, showing new location for the second diamond hole '24WADD002', areas to be tested with RC drilling, and geophysics target areas (black circles).

## RC Drilling

With the delayed commencement of the RC program due to ex-cyclone Megan, and with the recent ground gravity survey currently under review, the Company fortuitously has an opportunity to make amendments to the RC drilling program if required.

In the event the new gravity data modelling enhances any of the other geophysics target areas (refer to Figure 1) not being tested with diamond drilling, the Company will redirect RC drill holes where possible, to test these newly enhanced target areas.

## Geophysics – DDIP Survey

Eleven new DDIP survey lines will be completed over the entire Pokali area and include several infill lines between historic survey lines completed by Ashburton Minerals in the mid-2010's. such as that seen in Figure 2, and several extensional lines over geophysics target areas to the far west and far east of Pokali.

As you can see in Figure 2, the chargeability response can be a good indicator of copper mineralisation, particularly when proximal to both magnetic susceptibility and gravity high models.

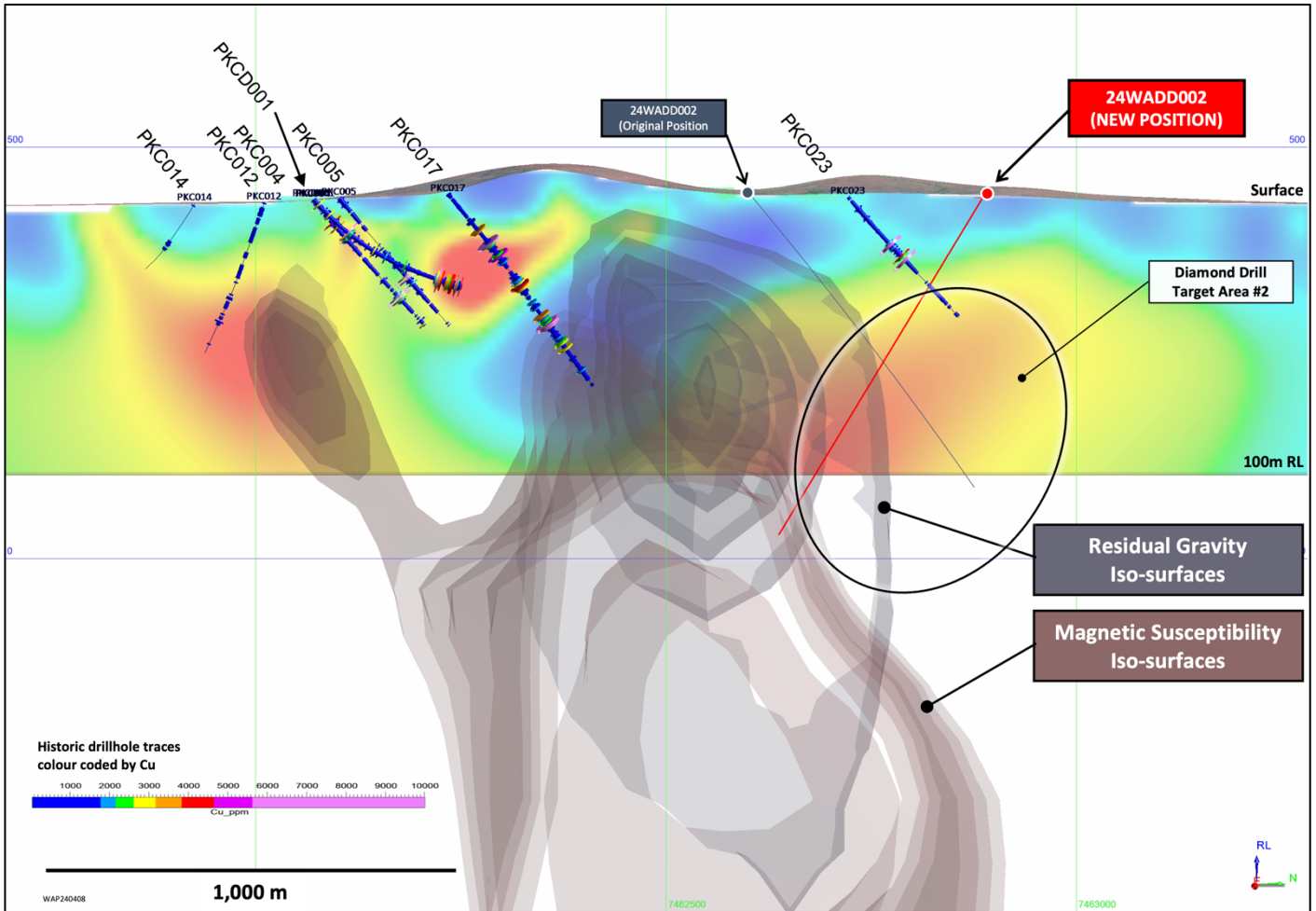


Figure 2 – Schematic section showing NEW and Original positions for diamond hole 24WADD002, ‘Diamond Drill Target Area #2’, gravity and magnetic 3D-inverted iso-surfaces, historic DDIP conductivity slice (rainbow coloured background), and historic drillhole traces colour coded by copper.

----ENDS----

Authorised by the Board of Rincon Resources Limited

For more information visit [www.rinconresources.com.au](http://www.rinconresources.com.au) or contact:

**Company:**

**Gary Harvey**  
**Managing Director**  
 Rincon Resources Limited  
 +61 (08) 6243 4089

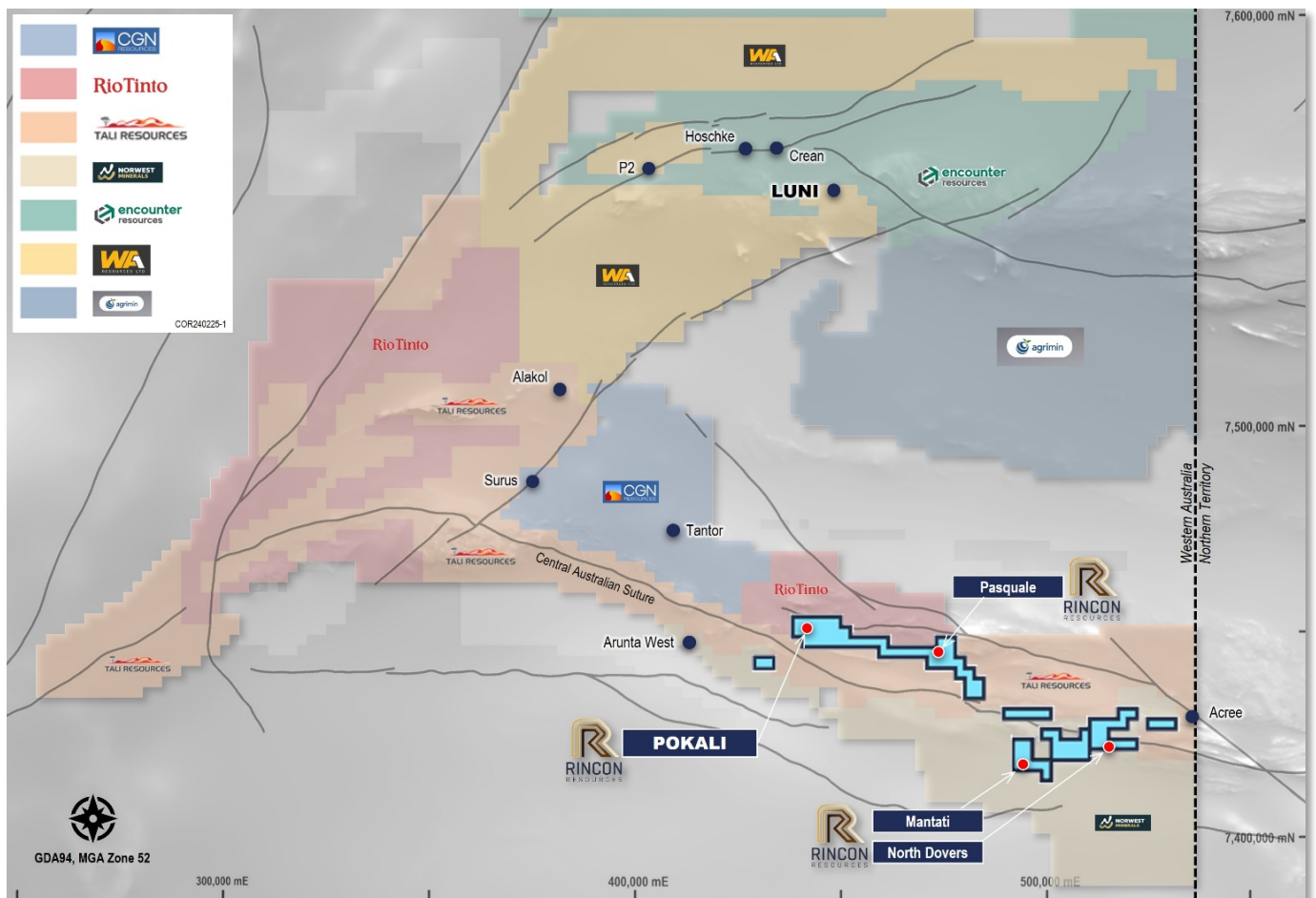
**David Lenigas**  
**Executive Chairman**  
 U.K.: M: +44 (0) 7881 825378  
 Australia: M: +61(0) 405504512  
 Monaco: M: +33 (0) 678633030



## About Rincon

Rincon has 100% interest in three exploration assets in Western Australia that are highly prospective for copper, gold, REE's and critical metals required for the energy transition; these are the South Telfer Project, West Arunta Project and Laverton Project.

Each asset has previously been subject to historical exploration which has identified prospective mineral systems that warrant further exploration. The Company's aim is to create value for its shareholders by advancing its assets through the application of technically sound, methodical and systematic exploration programs to test, discover, and delineate economic resources.



West Arunta Project, WA.

### **Competent Persons Statement**

The information in this report that relates to Exploration Results is based on information compiled by Mr Gary Harvey who is a Member of The Australian Institute Geoscientists and is Managing Director of the Company. Mr Harvey has sufficient experience that is relevant to the style of mineralisation and type of deposit under consideration and to the activity which he is undertaking to qualify as a Competent Person as defined in the 2012 Edition of the Australasian Code for Reporting of Exploration Results, Mineral Resources and Ore Reserves. Mr Harvey consents to the inclusion in this report of the matters based on this information in the form and context in which it appears.

### **Future Performance**

This announcement may contain certain forward-looking statements and opinions. Forward-looking statements, including projections, forecasts and estimates, are provided as a general guide only and should not be relied on as an indication or guarantee of future performance and involve known and unknown risks, uncertainties, assumptions, contingencies and other important factors, many of which are outside the control of the Company and which are subject to change without notice and could cause the actual results, performance or achievements of the Company to be materially different from the future results, performance or achievements expressed or implied by such statements. Past performance is not necessarily a guide to future performance and no representation or warranty is made as to the likelihood of achievement or reasonableness of any forward-looking statements or other forecast. Nothing contained in this announcement, nor any information made available to you is, or and shall be relied upon as, a promise, representation, warranty or guarantee as to the past, present or the future performance of Rincon.