



**Asra Minerals Limited**  
ABN 72 002 261 565  
104 Colin Street  
West Perth WA 6005  
Australia

Phone +61 8 9420 8208  
info@asraminerals.com.au  
**ASX: ASR**  
**asraminerals.com.au**

**ASX Announcement: 12 April 2024**

## **Date of AGM and Director Nominations**

**Asra Minerals Limited (ASX: ASR; “Asra” or “the Company”)** advises, in accordance with ASX Listing Rule 3.13.1, the dates for the Annual General Meeting (“AGM”) of the Company and the closing date for receipt of nominations from persons wishing to be considered for election as a director.

The AGM is scheduled to be held on Friday, 31 May 2024.

All director nominations for election at the AGM are to be received no later than 5.00 pm (WST time) on Friday, 19 April 2024. The Constitution requires nominations be received in writing, signed by the nominee or a Shareholder proposing the nominee, and be submitted to one of the following addresses:

**In person:** 104 Colin Street, West Perth WA 6005

**By mail:** 104 Colin Street, West Perth WA 6005

**By email:** leonard.math@asraminerals.com.au

**This announcement has been authorised for release by the Board.**

### **INVESTORS:**

Rob Longley  
Managing Director  
Asra Minerals Ltd  
[info@asraminerals.com.au](mailto:info@asraminerals.com.au)

### **MEDIA:**

Emily Evans  
SPOKE  
+61 401 337 959  
[emily@hellospoke.com.au](mailto:emily@hellospoke.com.au)

### **About Asra Minerals**

Asra Minerals is a multi-commodity focused exploration company, targeting a growing gold, lithium and rare earth element (REE) portfolio in the premier Goldfields region of Western Australia.

The Company’s flagship Mt Stirling Project is located 240km north of Kalgoorlie and hosts 10 gold prospects, and a gold JORC Mineral Resource. The project also shows significant potential for REE and critical minerals including Scandium.

Asra’s Kookynie West Project, situated less than 50km south, is a largely underexplored site showing gold, lithium and REE potential.

Asra has two lithium-focused exploration projects in the southern Yilgarn area of WA at Lake Johnston and Lake Cowan, located in highly prospective ground between operating lithium mines at Earl Grey and Bald Hill.

Asra’s footprint in the world-class Eastern Goldfields region currently stands at 1,311km<sup>2</sup>.

The Company has a joint venture in the Kalgoorlie region with Loyal Lithium (ASX: LLI) at Mount Monger, focused on gold exploration. Asra also retains an equity holding in Loyal Lithium.

Led by a strong and experienced team, Asra Minerals is focused on developing its West Australian gold and critical minerals projects.

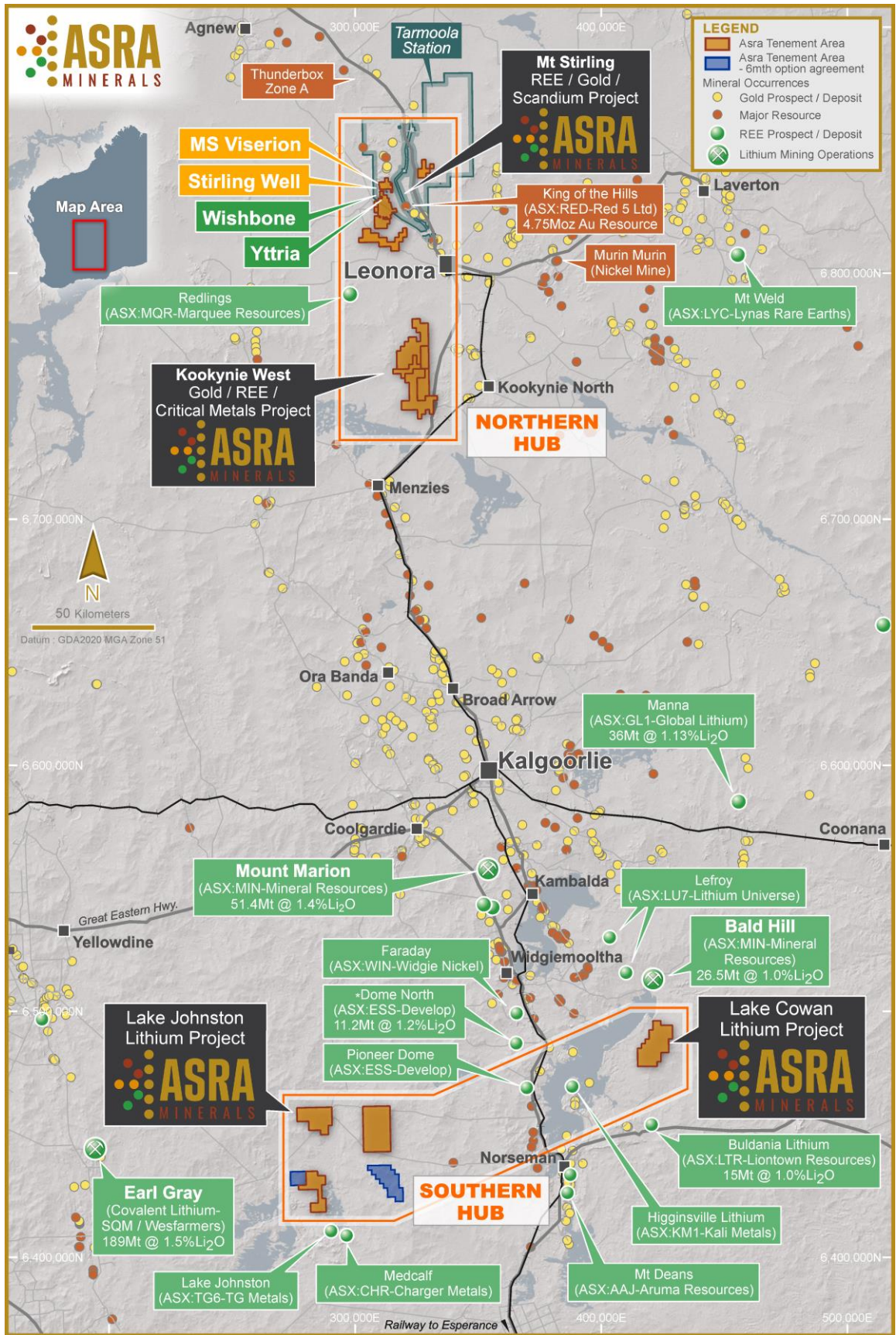


Figure 1. Location of Asra's Projects in its northern and southern Hubs in Western Australia.