



**Adelong**  
**GOLD**

Re-awakening  
One of Australia's  
Richest Gold Mines  
+ New Brazil Projects

April 2024

[adelonggold.com](https://adelonggold.com)

# Important Information



The release, publication or distribution of this presentation in certain jurisdictions may be restricted by law and therefore persons in such jurisdictions into which this presentation is released, published or distributed should inform themselves about and observe such restrictions.

## **DISCLAIMER**

This presentation is for informational purposes only and does not constitute an offer to sell, or solicitation to purchase, any securities. Such Offer can be made only through proper subscription documentation and only to investors meeting strict suitability requirements. Any failure to comply with these restrictions may constitute a violation of applicable securities laws. In providing this presentation Adelong Gold Limited ACN 120 973 775 and its subsidiaries ("ADG") has not considered the financial position or needs of the recipient. Persons needing advice should consult their stockbroker, bank manager, solicitor, attorney, accountant or other independent financial and legal advisors.

## **FORWARD LOOKING STATEMENTS**

Various statements in this presentation constitute statements relating to intentions, future acts and events. Such statements are generally classified as "forward looking statements" and involve known and unknown risks, uncertainties and other important factors that could cause those future acts, events and circumstances to differ materially from what is presented or implicitly portrayed herein. Words such as "anticipates", "expects", "intends", "plans", "believes", "seeks", "estimates" and similar expressions are intended to identify forward-looking statements. ADG cautions shareholders and prospective shareholders not to place undue reliance on these forward-looking statements, which reflect the view of ADG only as of the date of this presentation. The forward-looking statements made in this presentation relate only to events as of the date on which the statements are made.

## **COMPETENT PERSONS STATEMENT**

Information relating to Exploration Results, geological data, and metallurgical testing has been compiled by Mr. Ian Holland. Mr Ian Holland is a Fellow (#210118) of the Australasian Institute of Mining and Metallurgy. He is the Managing Director of Adelong Gold Ltd and has sufficient experience that is relevant to the style of mineralisation and types of deposits under consideration and to the activity being undertaken to qualify as a Competent Person (CP) as defined in the 2012 Edition of the 'Australasian Code for Reporting of Exploration Results, Mineral Resources and Ore Reserves' (the JORC Code). Mr Ian Holland believes that these Resource Estimates fairly represent the resources as defined at the Adelong Gold Project.

The information relating to JORC 2012 Resource Estimates and Pit Optimisation studies and Mine Plans which generated the Production Targets for the open cut mines that were used in the Scoping Study were completed by Robin Rankin. Robin Rankin is a Competent Person who is a Member (#110551) of the Australasian Institute of Mining and Metallurgy (MAusIMM) and accredited since 2000 as a Chartered Professional (CP) by the AusIMM in the Geology discipline. Robin Rankin provided this information to his Client Adelong Gold Limited as paid consulting work in his capacity as Principal Consulting Geologist and operator of independent geological consultancy GeoRes. He and GeoRes are professionally and financially independent in the general sense and specifically of their Client and of the Client's project. More recently a Mineral Resource Estimates on the Perkins West deposit at Gibraltar was undertaken by Mark Drabble who is a member or fellow of the Australasian Institute of Mining and Metallurgy (# 111619) and the Australian Institute of Geoscientists(#6246) and is a senior consultant in Snowden Optiro.

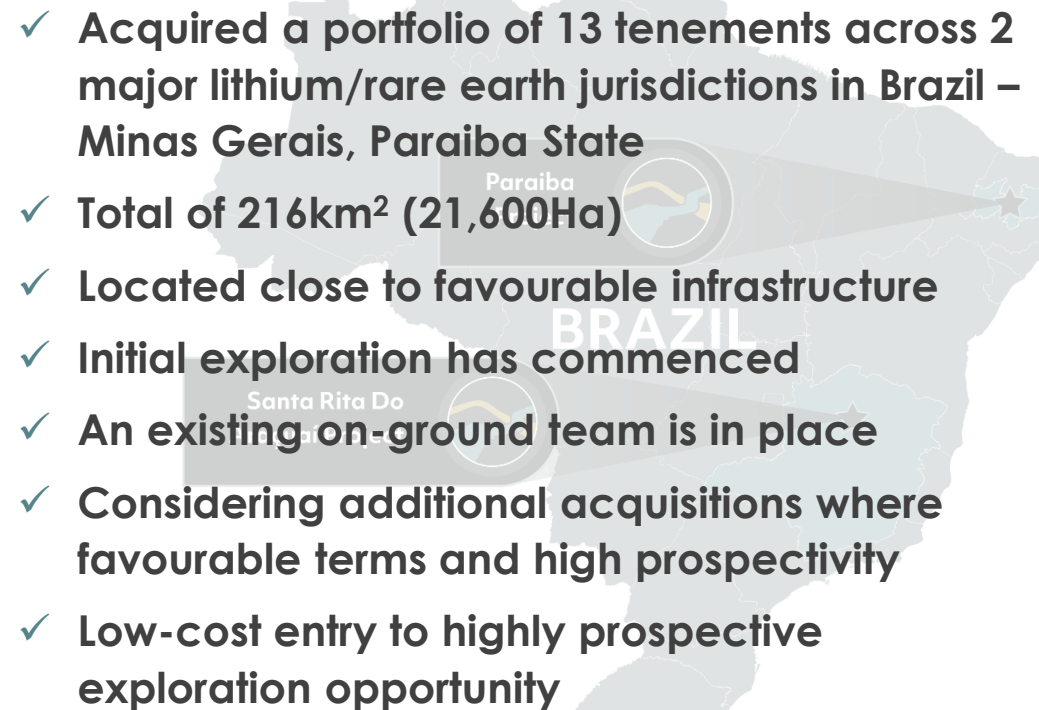
These consultants provided their service on a paid basis, governed by a scope of work, a fee and expenses schedule, and the results or conclusions reported were not contingent on payments. Robin Rankin and Mark Drabble have sufficient experience that is relevant to the style of mineralization and type of deposit under consideration and to the activity being undertaken to qualify as a Competent Person (CP) as defined in the 2012 Edition of the 'Australasian Code for Reporting of Exploration Results, Mineral Resources and Ore Reserves' (the JORC Code).

# Investment Highlights

## Adelong Gold Project

- ✓ Foundations for a commercial project
    - 800koz historical production, inc 380koz from *Underground @ 45g/t*
    - 68km<sup>2</sup> Exploration permit
    - 1.5km<sup>2</sup> Mining permit
  - ✓ 188koz Total JORC Resource
  - ✓ Significant resource potential
  - ✓ Permitted with processing options
  - ✓ Scoping Study showed +\$80M cashflow
  - ✓ Regional processing opportunity
  - ✓ Advancing project towards BFS to facilitate near-term production
- 

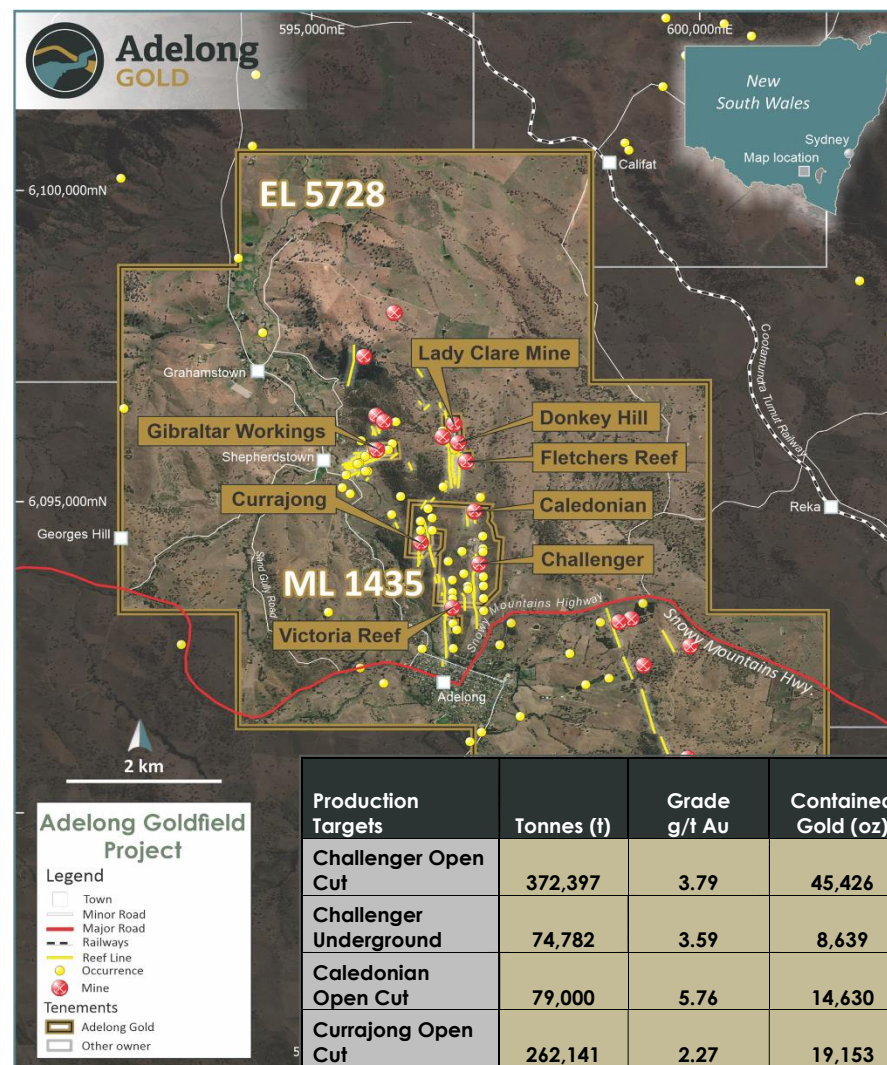
## Brazil Lithium Projects

- ✓ Acquired a portfolio of 13 tenements across 2 major lithium/rare earth jurisdictions in Brazil – Minas Gerais, Paraiba State
  - ✓ Total of 216km<sup>2</sup> (21,600Ha)
  - ✓ Located close to favourable infrastructure
  - ✓ Initial exploration has commenced
  - ✓ An existing on-ground team is in place
  - ✓ Considering additional acquisitions where favourable terms and high prospectivity
  - ✓ Low-cost entry to highly prospective exploration opportunity
- 



# Adelong Gold Mine NSW – Grade is King

- ▶ **Robust Scoping Study** (update) was released in October 2022 and shows a highly profitable, low-capital development. Permitting is being progressed in 2024 with potential production within 12 months of development finance<sup>1</sup>
- ▶ **Drilling** is planned in 2024 to add to resources and improve confidence, along with metallurgical testwork and open-pit geotechnical planning.
- ▶ **Feasibility** work to commence to upgrade the confidence level in both Capital and Operating costs is underway, along with Environmental Survey work as part of the planned EIS/REF for the plant expansion from 120ktpa (permitted) to 240ktpa.
- ▶ **ADG trading at A\$25/oz Au in resources** offers tremendous potential upside without further resource expansion.



Production Targets used in the Scoping Study

Production Targets	Tonnes (t)	Grade g/t Au	Contained Gold (oz)	Measured Resources	Indicated Resources	Inferred Resources
Challenger Open Cut	372,397	3.79	45,426	78%	17%	5%
Challenger Underground	74,782	3.59	8,639	60%	40%	
Caledonian Open Cut	79,000	5.76	14,630		77%	23%
Currajong Open Cut	262,141	2.27	19,153		69%	31%
<b>Total Treated</b>	<b>788,320t</b>	<b>3.47g/tAu</b>	<b>87,818oz</b>	<b>43%</b>	<b>40%</b>	<b>17%</b>

<sup>1</sup> According to updated Scoping Study release 31 October 2022 "Planning, Approval and Construction timeline of 12 months" p22 of ASX release.

# Adelong Gold Project

## Adelong Goldfield (NSW) Projects



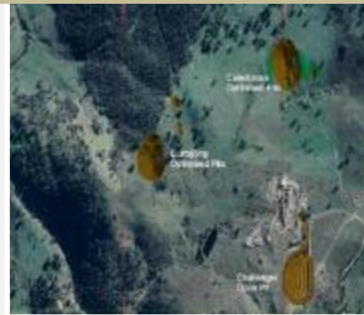
- 800koz Historical production
- Inc. 380koz Underground @ 45g/t Au
- 68km<sup>2</sup> Exploration permit
- 1.5km<sup>2</sup> Mining permit
- Initial target > Flagship Challenger Gold Project

## 188K Total JORC Resource <sup>1</sup>



- Challenger  
80.3koz @ 3.77g/t Au
- Currajong  
44.8koz @ 2.61g/t Au
- Caledonian  
28.0koz @ 3.48g/t Au
- Donkey Hill  
16.6koz @ 5.03g/t Au
- Perkins West, Gibraltar  
18.3koz @ 2.10g/t Au

## Significant Resource Potential



- ADG has substantially increased the project resources (45%) and average grade (18%) to 1.82Mt @ 3.21g/tAu (188,000oz<sup>1</sup>)
- Assays from additional Gibraltar show potential for expanding resources
- Other exploration targets identified for drilling include Sawpit, Fletchers, and Northern Caledonian

## Permitted with Processing Options



- Mining permit in place for Challenger
- Processing plant on site with 100% ownership: *Cyanide permitted*
- Metallurgical test work completed and confirms major part of the gold recovered through a low-cost gravity process
- Potential to recommence gold mining if financed, within twelve months under existing permits

## Scoping Study confirms a viable project



- Initial Scoping Study based on 55% of the Resources showed Robust Project with high 72% IRR (pre-tax)
- Central processing plant treating ore from satellite deposits
- Additional Open Cut Resources can add significantly to the economic returns
- A\$70-80M net cashflow (pre-tax, A\$2650/oz)

# Adelong Gold Mine Scoping Study Update 2022



An attractive “Stage 1” Project based on mining only existing Resources

Various mining and processing options were considered with the final selection (Base Case) presented in the following table

Study relates to only **<50%** of JORC resources = Substantial further upside potential exists

Gross Project Cashflow (after Initial Capital Investment) = **\$81M**  
@ A\$2650/oz

Forecast Net cash return (including Initial Capital Investment) = **\$69M**

Central Processing Plant Concept

Additional ore could be sourced from nearby deposits or other underground/open-cut deposits in the region

Initial capital investment of **\$11.9M**  
Plus Working Capital (approximately \$4-5M)

Table 1 - Summary of the financial analysis  
(Based on A\$2,650oz)

SCOPING STUDY SUMMARY	
Initial Capital Costs (\$M)(Excludes Working Capital)	\$11.88
Mine Life	5 Years
Production based on Initial Scoping Study(gold oz)	81,082 <sup>2</sup>
Cash Flow (A\$M)	
Revenue (\$M)	\$213.79
OPEX (\$M)	\$124.49
Production CAPEX (\$M)	\$8.38
PRODUCTION CASHFLOW (Before Tax)(\$M)	\$81.06
Initial Capital Costs (\$M)(Excludes Working Capital)	\$11.88
<b>NET CASH FLOW(Before Tax) (\$M)</b>	<b>\$69.18</b>
<b>IRR % (Before Tax)</b>	<b>72%</b>
<b>NPV (5%) Before Tax (\$M)</b>	<b>\$53.56</b>

For more in-depth information, please refer to ASX Announcement 31 October 2022 “Updated Scoping Study Shows Substantial Improvement with Addition of Caledonian Deposit”

<sup>1</sup> - The Company confirms it is not aware of any new information or data that materially affects the information included in the relevant market announcement and, in the case of estimates of mineral resources, that all material assumptions and technical parameters underpinning the estimates in the relevant market announcement continue to apply and have not materially changed

<sup>2</sup> - Approximately 17% of the resources used in this Production Target are in the Inferred Mineral Resource category. As there is a low level of geological confidence associated with Inferred Mineral Resources, there is no certainty that further exploration work will result in the determination of further Measured or Indicated Mineral Resources or that the Production Target or preliminary economic assessment will be realised

# Potential to Increase Adelong Project Returns

## Resource Expansion

- The Scoping Study shows **any additional shallow resources can materially increase project returns**. As an example, the addition of Caledonian deposit to the Study in 2022.
- The recent addition of the shallow resources at the Perkin's West deposit have not been assessed in the Scoping Study also below Caledonian, Currajong and Challenger pits (further cutback or UG mines)
- There are **drill targets at Perkin's West, Caledonian and Sawpit deposits** that have the strong possibility of generating further expansions in resources.

## Mining & Processing

- Around 50% of the current resources have not been assessed in the Scoping Study but offer the potential for future development (>5yr mine life)
- Historically **>350koz mined @ 45g/t** shows grade potential
- Additional drilling and technical assessment are planned to generate an underground mine plan.
- None of the major historical mines have been tested for resources below the old workings.
- Single 12hr shift at 120ktpa for first 2 years: **Upside from expansion to 24hr processing**

## Gold Price

- **The Scoping Study was based on a gold price of \$A2,650/oz.**
- Gold prices currently exceed A\$3,600/oz - potential to have a significant impact on project returns.
- **Project NPV >A\$50M** provides an NPV/Capex ratio of >3:1 which is rare (many larger projects are 1:1)
- **Small changes to Development Consents** meaning potential for rapid start of mining once other items addressed (technical, financial)
- **High grade mullock dumps** – Non-JORC but potential to add cashflow

## Regional Potential

- The Adelong Mine Site is **strategically located** close to major highways.
- The Adelong Plant **could act as a regional processing facility** for ore and concentrates produced in the region.
- There are many gold prospects and resources located **within trucking distance** from this plant, but no other processing facility exists in this area.



# Brazil: New Frontier for Lithium & Rare Earths

- ▶ **Tier 1 Mining Jurisdiction:** Accounts for > 30% of global iron ore production.
- ▶ **Major Exporter:** Leading exporter of lithium, tin, and manganese with substantial reserves of gold, nickel, bauxite, and niobium.
- ▶ **Rare Earth Mining:** Biggest miner of rare earths outside of China.
- ▶ **Pro-Mining Culture:** Attracts significant foreign investment in the mining industry.
- ▶ **Tier-1 Destination:** Strong track record of successful mining projects.
- ▶ **Economic Impact:** Mining sector is a top-three contributor to the 10th largest economy in the World.





# Lithium Valley



## Large Hardrock Lithium Deposits Nearby

- ▶ Lithium Valley is situated within Minas Gerais province, rapidly becoming recognised as a world-class lithium destination.
- ▶ Within this province, there have been several major discoveries:
  - Sigma Lithium's (NASDAQ:SGML) **Grota do Cirio Deposit** <sup>1</sup>: **94.2Mt @1.45% Li<sub>2</sub>O**
  - Latin Resources' (ASX:LRS) **Salinas Project – Colina Deposits** <sup>2</sup>: **45.2Mt @1.34% Li<sub>2</sub>O**
  - Lithium Ionic's (TSX.V:LTH) **Itinga Project - Bandiera Deposit** <sup>3</sup>: **19.4Mt @ 1.42% Li<sub>2</sub>O**
- ▶ The Exploration Permits acquired by ADG are **primarily unexplored for lithium**, and a review of the geology suggests vital attributes for good potential for hosting lithium-bearing pegmatites.

### References

1. Refer to NI43-101 technical report dated 12 June 2023 (Sigmalithiumresources.com)
2. Refer to announcement 20 June 2023 (latinresources.com.au)
3. Refer to Announcement dated 27 June 2023 (Lithiumionic.com)

# Minas Gerais Tenements

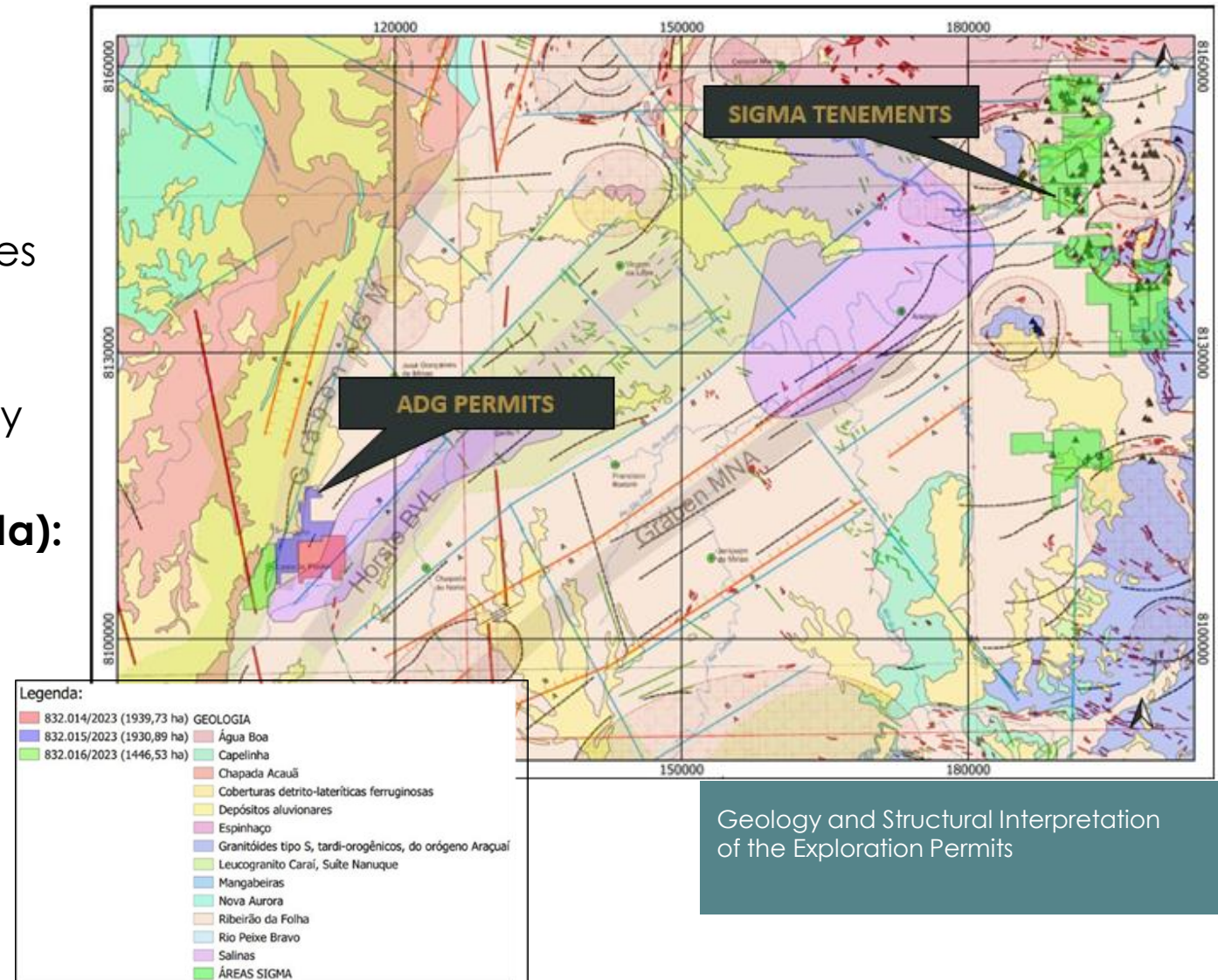
## Major Lithium discoveries (such as Latin Resources) in Region

The three Exploration Permits (EPs)<sup>1</sup>:

- ▶ show **strong potential to host lithium-bearing pegmatites**
- ▶ are proximate to fertile granite intrusives of the Salinas Formation
- ▶ are in an area that features the north-east trending structures that commonly host these pegmatite deposits

The total area granted is **52.4km<sup>2</sup> (5,239Ha)**:

- ▶ **832.014/2023**, covering 19.4km<sup>2</sup> (1,940 hectares);
- ▶ **832.015/2023**, covering 19.3km<sup>2</sup> (1,931 hectares); and
- ▶ **832.016/2023**, covering 13.7km<sup>2</sup> (1,369 hectares)



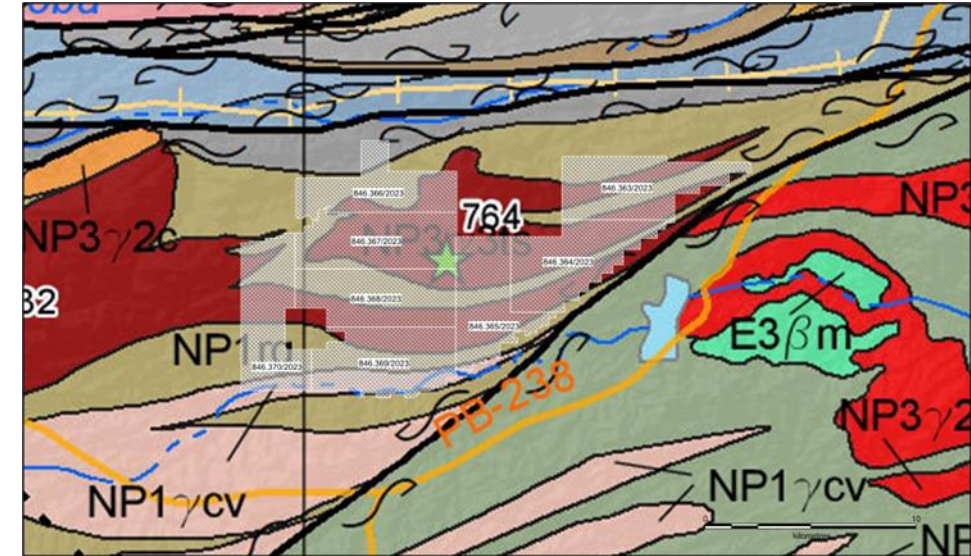
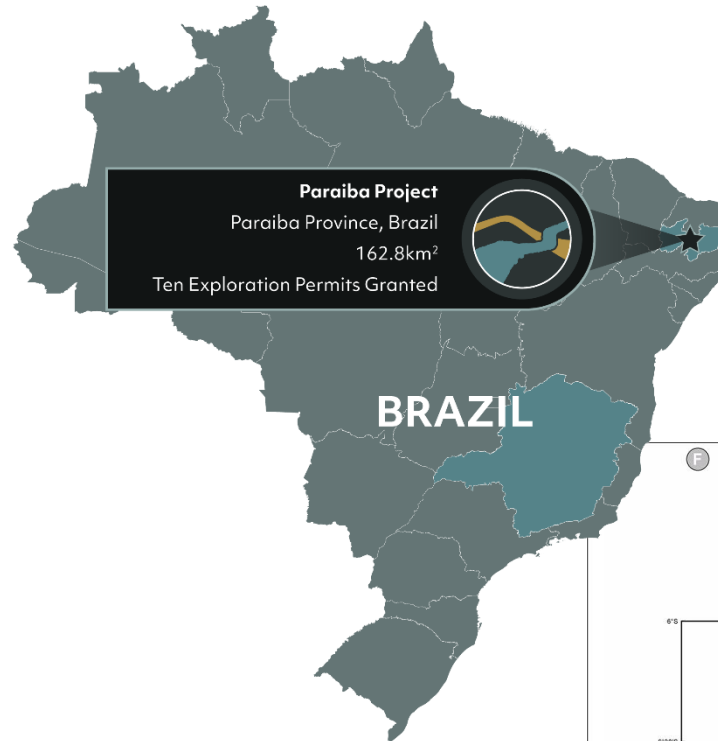
Geology and Structural Interpretation of the Exploration Permits

<sup>1</sup> Refer to ASX Announcement 22 September 2023 for details

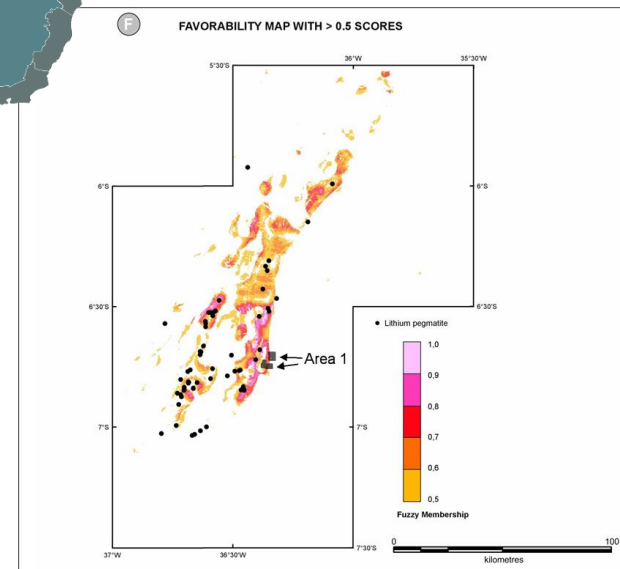
# Paraiba Province Tenements Granted

Potential for lithium and rare earths to be investigated

- ▶ Two permits for **1,131Ha (11km<sup>2</sup>)** in **Area 1** (North)
- ▶ Eight permits totalling **15,149 Ha (151Km<sup>2</sup>)** nearby
- ▶ Area known for Beryl, Tantalum, and lithium-related minerals <sup>1,2,3</sup>
- ▶ Peers include Solis Minerals (ASX: SLM) and Oceana Lithium (ASX: OCN)
- ▶ Low-cost entry, significant leverage to discovery



Geological Map of Area 2  
Source: Mapa Geologica da provincial Borborema, Servico Geologico do Brasil.



Reproduction of the published map.  
Source: Favourability Map for Lithium Pegmatites of Borborema Pegmatite Province, Geological Survey of Brazil

<sup>1,2,3</sup> ADG ASX Releases dated 17 and 23 November, and 21 December 2023



# Outlook and Next Steps

## Adelong Gold Project

- Further drilling planned at key deposits contained within the scoping study
- Potential to upgrade and extend these deposits in support of BFS for project
- Funding options being considered for the entire project
- Follow up drilling on peripheral sources deferred to focus on bringing the project into production
- Company sees great longer-term value in the regional opportunities to build a significant processing hub

## Brazil Lithium Projects

- Detailed mapping in the key target areas within the Minas Gerais projects aiming to identify the presence of pegmatitic bodies
- Stream sediment/float sampling in the same two areas with the objective of identifying lithium anomalies and indicator minerals
- Brazilian field team have commenced an initial reconnaissance program in Paraiba projects which will facilitate further, more focused exploration in 2024
- Adelong continues to assess other areas of interest in Brazil



**Ian Holland**  
**Managing Director**

+61 428 397 245

[ian.holland@adelonggold.com](mailto:ian.holland@adelonggold.com)

**Mark Flynn**  
**Investor Relations**

+61 416 068 733

[mark.flynn@adelonggold.com](mailto:mark.flynn@adelonggold.com)

**[adelonggold.com](http://adelonggold.com)**

Released with the Authority of the Board – April 2024