

ASX Announcement | 30 April 2024

## Quarterly Activities Report For the Quarter Ending 31 March 2024

Loyal Lithium Limited (**ASX:LLI**) (**Loyal Lithium, LLI** or the **Company**) is pleased to provide its Quarterly Activity Report for period ended 31 March 2024 (**Quarter** or **Reporting Period**).

### CORPORATE HIGHLIGHTS

- Continuation of the development of Loyal Lithium as a North American focused lithium led battery minerals company, pursuing growth opportunities via exploration and collaboration with battery metals focused allied individuals and companies.
- Drill core assays from maiden drill program and subsequent drill program confirmed world class lithium and tantalum grades at the Trieste Lithium Project, where a major lithium hub is developing with activity by Rio Tinto/Midland Exploration, Azimut/SEQUEM and Winsome Resources' (ASX:WRI).
- With A\$5.0m in funding LLI is well positioned for further exploration in the next quarter and throughout 2024.

### OPERATIONS HIGHLIGHTS

#### TRIESTE LITHIUM PROJECT:

- During the Quarter, high grade channel sample assay results were announced<sup>(1)</sup> from three of the six spodumene bearing dykes.
- The Company released an extensive geological analysis that provided insights into the unique geological setting and exposed the potential scale of the Project<sup>(2)</sup>:
- Analysis identified two highly prospective areas within the project, namely, the underexplored Trieste Greenstone Discovery Trend and the 20km<sup>2</sup> Metasediment Fault Flow Zone.
- The Project has already yielded a significant find in the 2023 first field season, with six spodumene bearing pegmatite dykes discovered<sup>(3)</sup>, however this new analysis and interpretation indicates high potential for additional new discoveries within these areas.
- A major lithium discovery was also released during the Quarter, with drill core assay results from the October 2023 Dyke #01 drilling campaign, confirming a major lithium discovery at the Trieste Lithium Project. The near surface high-grade drill intercepts included 40.0m at 1.2% Li<sub>2</sub>O<sup>(4)</sup>.

- During the Quarter, Loyal Lithium executed an additional winter drilling program at the Trieste Lithium Project, targeting Dyke #04 and Dyke #05, two of the six spodumene bearing dykes.
- World class lithium and tantalum grades were reported for Dyke #05 drill core assay results. The drill core assay results included intercepts of 31.8m of 2.2% Li<sub>2</sub>O and 499ppm Ta<sub>2</sub>O<sub>5</sub> from 2.9m, and 28.6m of 1.7% Li<sub>2</sub>O and 1,050ppm Ta<sub>2</sub>O<sub>5</sub> from 6.5m<sup>(5)</sup>.
- Exploration planning for the upcoming 2024 summer field program is in the advanced stages.
- Several high-resolution geophysics methodologies assessed to characterise the pegmatite signatures, search for their potential extensions on trend and at depth, and the links between the pegmatite dykes.
- Subsequent to the Quarter, the Company determined that the recent advances in mobile Magnetotellurics (MTm) technology, including a broad band frequency probe, will be suitable to investigate and differentiate between highly resistive rock types (i.e. pegmatitic and metamorphic) to a depth of 600+ metres<sup>(6)</sup>.
- At present there are six known spodumene pegmatite dykes located within a 20km<sup>2</sup> fertile metasediment hosted Fault Flow Zone, where the 2023 summer field program discovered a unique cluster of spodumene bearing dykes and prolific boulders containing visual spodumene mega-crystals and large tantalum oxide crystals<sup>(7)</sup>. Drilling at three of the six known pegmatite dykes has confirmed that mega-crystals of spodumene and tantalum oxides persist at depth with both high-grade lithium and tantalum drill intercepts reported.
- The Trieste Lithium Project is strategically located along the Trieste Greenstone Belt and connected to multiple spodumene bearing lithium projects of Rio Tinto/Midland Exploration, Azimut/SEQUEM and Winsome Resources' (ASX:WRI) Adina-Jamar project with a JORC Inferred Mineral Resource Estimate of 59 Mt at 1.12% Li<sub>2</sub>O<sup>(8)</sup>.
- In September 2023, Loyal Lithium and Winsome Resources signed a collaboration Memorandum of Understanding (MOU) on a range of objectives mutually applicable to the respective companies' and their James Bay Lithium projects<sup>(9)</sup>. The MOU is a strategic move towards minimising environmental and stakeholder impacts, and to achieve a low-cost domestic Lithium supply and positions the Trieste Greenstone region as a key player in the emerging North American Lithium supply chain. The strategic acquisition of the Renard processing facility and infrastructure by Winsome Resources further solidifies and accelerates the development pathway for the region.

- Subsequent to the Quarter, more thick high grade lithium drill core assay results were announced for Dyke #04. The drill core assay results included intercepts of 32.8m of 1.2% Li<sub>2</sub>O 27.6m and 31.1m of 1.5% Li<sub>2</sub>O from 19.9m<sup>(10)</sup>.

#### HIDDEN LAKE LITHIUM PROJECT:

- The 2023 summer field program discovered additional spodumene dykes to extend the total mineralised strike length to 3,250m - a notable 44% increase<sup>(11)</sup>.
- Four of the seven main dykes have been drill-tested to a limited depth of 30-50 metres, with all 10 drill holes intercepting high-grade spodumene of up to 1.81% Li<sub>2</sub>O.
- Historical metallurgical test work indicates consistency across spodumene rich dykes with very simple mineralogy of predominantly coarse-grained spodumene, quartz, and feldspars, with low impurities (<0.25% FeO). New in-house test work is in progress to understand, confirm and build upon this precious work.
- Dense Media Separation (DMS) pilot plant produced a high-grade concentrate of 6.11% Li<sub>2</sub>O from a 400kg bulk sample with minimal loss to tailings.
- Historical drill core samples and data were delivered for environmental and geotechnical analysis for an in-house strategic open pit mining/processing option optimisation study.
- Strategically located 65km east of Yellowknife, with notable infrastructure connecting the Project to the rest of Canada.
- A Land Use Permit has been issued to Loyal enabling further exploration work, including drilling. Collaborative discussions are underway with the First Nation and JV Partner.

#### SCOTTY LITHIUM PROJECT:

- Drilling results, geophysical and USGS structural data were used to create a 3D model Exploration Target, with a range of 460 million tonnes at 1,145 ppm to 837 million tonnes at 1,175 ppm at a 700ppm lithium cut-off-grade<sup>(12, 13)</sup>. The potential quantities and grades are conceptual in nature and there has been insufficient exploration to estimate a Mineral Resource and the Company is uncertain if further exploration will result in the estimation of a Mineral Resource.
- The Scotty Lithium Project is located north of the mining town of Beatty, 220km from Las Vegas and 330km from Tesla's Nevada Gigafactory with existing all-weather roads and power infrastructure within proximity.

#### BRISK LITHIUM PROJECT:

- Due to wildfires in James Bay preventing exploration during much of the 2023 summer field exploration season, the planned field program was rescheduled, with the priority being to complete field work at the Trieste Lithium Project, southeast of Brisk.
- An inaugural field program at Brisk was completed in 2022 with the following highlights <sup>(14)</sup>:
  - More pegmatite outcrops discovered at Area 1 than originally anticipated.
  - Area 1 and Area 2 considered prospective for lithium, and further field work is recommended. Area 1 in the southeast has an east striking interpreted pegmatite not sampled previously that is the highest priority target.
  - Multiple samples containing highly fractionated pegmatites with indicator elements and mineralogy were obtained, including lithium, tantalum, niobium, beryllium, and bismuth, tourmaline, apatite, and garnet.
  - The southwest pegmatite body at Area 3 is highly continuous, with above background rubidium detected in the geochemical signature.

#### WESTERN AUSTRALIA:

- Divestment and JV options continue to be sought<sup>(15)</sup>. A mining lease application was submitted across the Providence JORC Inferred Gold resource of 16,400 oz at 2.5 g/t.<sup>(16)</sup>

#### FINANCE UPDATE

Cash available to the Company as at 31 March 2024 was A\$3.5m which excludes over A\$1.5m in Sales Tax refunds and Quebec Mining Tax credits which are forecast to be returned to the Company over the coming months. Therefore, with A\$5.0m in funding LLI is well positioned for further exploration in the next quarter and throughout 2024.

Payments for the Quarter included:

- Exploration and Evaluation Expenditure during the Quarter was A\$2.424m. Full details of exploration activity during the Quarter are set out in this report and relate primarily to exploration costs at the Trieste Lithium Project, with minor works at Hidden Lake and in Western Australia.
- Payment to related parties of the Company and their associates during the Quarter was A\$49,000.

The Company's disclosure required by ASX Listing Rule 5.3.4 regarding a comparison of its actual expenditure to date since re-listing on 2 August 2023 against the 'Use of Funds' statement in its Re-compliance Prospectus dated 5 June 2023 (Section 3.9) and Supplementary Prospectus dated 27 July 2023 (Section 3.7) ("**Prospectus**") is included in the attached Appendix 5B.

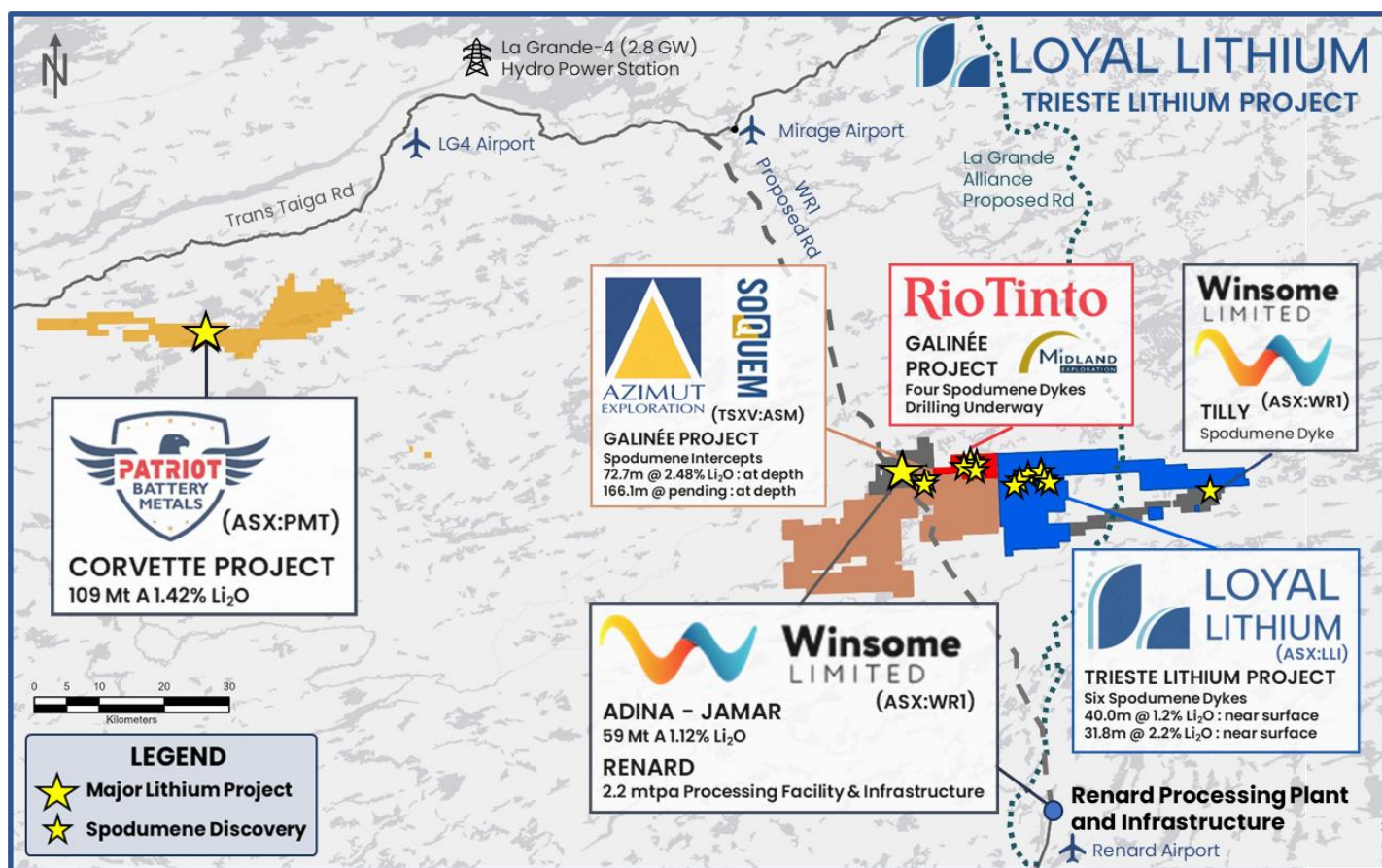
## OPERATIONS UPDATE



**Figure 1 – Loyal Lithium's three core Lithium Projects: Well positioned to supply the Emerging North American Battery Supply Chain.**

### TRIESTE LITHIUM PROJECT

The Trieste Lithium Project is a large scale spodumene pegmatite project that hosts six spodumene mineralised dykes, located along the emerging lithium rich Trieste Greenstone Belt (Figure 2), connected to multiple spodumene bearing lithium projects of Rio Tinto/Midland Exploration, Azimut/SEQUEM and Winsome Resources' (ASX:WR1) Adina-Jamar project with a JORC Inferred Mineral Resource Estimate of 59 Mt at 1.12% Li<sub>2</sub>O<sup>(9)</sup>. During the extensive and focused 2023 field program, the Company discovered six spodumene bearing pegmatite dykes, consisting of aligned implied continuous outcrops, within a 20km<sup>2</sup> fertile metasedimentary rock host zone, located between the Trieste Greenstone Belt and the Tilly granite. The dykes are situated within metasediment host rock, with several high-value greenstone targets, as well as other metasediment targets, yet to be fully explored.

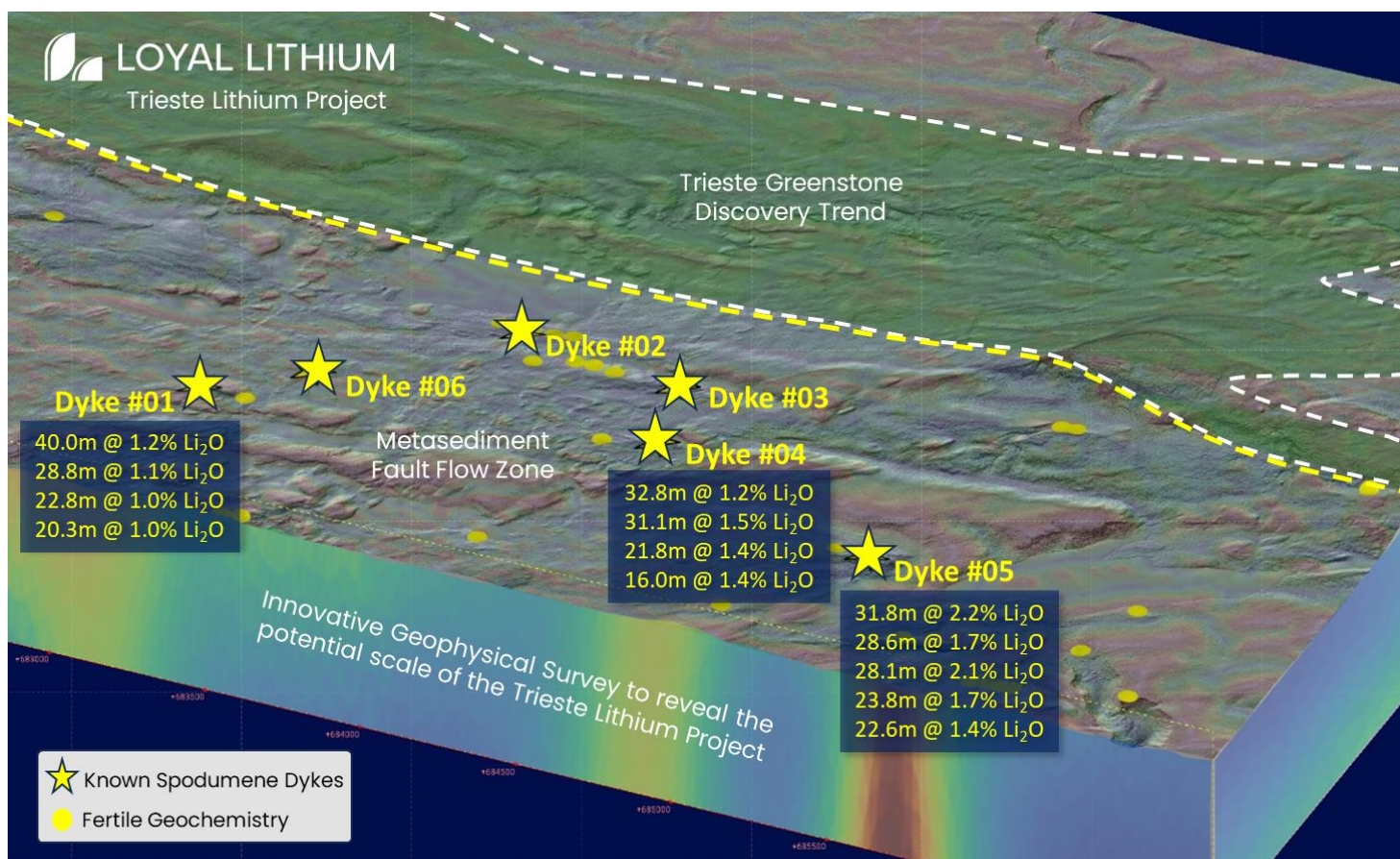


**Figure 2: Location of the Trieste Lithium Project, and other nearby projects, located in Quebec, Canada.**

The Company completed its maiden drilling program at Dyke #01 in October 2023 that hosts spodumene mega crystals at surface confirmed by high grade lithium assay results. The assay results from the maiden drilling program were reported during Q1 2024<sup>(4)</sup>, with notable near surface assay results of 40.0m of 1.2% Li<sub>2</sub>O from 15.0m and 28.8m of 1.1% Li<sub>2</sub>O from surface. The drill core assay results exhibit high grade lithium from surface and follow the previously announced channel <sup>(1)</sup> and rock chip <sup>(3)</sup> sample assay results. The channel results were released in Q1 2024.

Subsequent to the maiden drilling campaign, and within Q1 2024, the Company completed an additional drilling program, targeting Dyke #04 and Dyke #05, with both dykes showing spodumene mega crystals at surface. The drill assay results from both dykes exhibit similar high grade results that were intersected when drilling Dyke #01<sup>(2)</sup>, with notable near surface results of 32.8m of 1.2% Li<sub>2</sub>O from 27.6m (Dyke #04) and 31.8m of 2.2% Li<sub>2</sub>O from 2.9m (Dyke #05).

Spodumene mega crystals were identified within the drill core of both dykes, with drillhole KS24-005 reporting a high grade intercept of 4.0m of 5.2% Li<sub>2</sub>O, within the greater lithium interval of 16.0m at 1.4% Li<sub>2</sub>O. The two drilling campaigns have a cumulative total of 41 drillholes and 3,644m of drilling with notable drill intersect assay results summarised in Table 1 and Figure 3.



**Figure 3: Trieste Lithium Project – An example depth of inspection output against the Trieste backdrop with notable drill assay results shown for Dyke #01, Dyke #04, and Dyke #05.**

The Company has completed the field and drilling campaigns with the support of its in-country geological partner, Dahrouge Geological Consulting (DGC). The field observations of spodumene occurring within the dykes was confirmed by members of the Ordre des Géoologues du Québec, and by the JORC Competent Person (CP), with many large mega spodumene crystals identified across the five original discovered dykes. The Company continues to utilise DGC and plans on completing the upcoming filed season with DGC as well, which is in the advanced stages of planning. In Q1 2024, Loyal Lithium announced a planned innovative geophysical survey to reveal the potential scale of the Trieste Lithium Project with a focus on mobile Magnetotellurics (MTm).

This cutting-edge survey will utilise a suite of advanced sensors, including the latest in MTm technology, to identify structural corridors that may contain lithium-bearing structures and reveal the project's potential scale. The survey is expected to investigate and differentiate between highly resistive rock types to a depth of 600+ meters and expose conductive features within the 20km<sup>2</sup> Metasediment Fault Flow Zone. Anticipated to generate a detailed 3D model, this survey will aid in pinpointing both surface and subsurface drilling targets, building upon the high-grade lithium and tantalum assays from previous drilling programs (Figure 3).

**Table 1: Trieste Lithium Project – Notable Assay Results from Dyke #04 and Dyke #05.**

Trieste Lithium Project Dyke #04 & #05 Notable Drill Assay Intercepts (NAD83z18)											
Dyke ID	Hole ID	Easting	Northing	Elevation (m)	Dip	Azimuth	From (m)	To (m)	Length (m)	Lithium Grade Li <sub>2</sub> O%	Tantalum Grade Ta <sub>2</sub> O <sub>5</sub> ppm
Dyke #04	KS24-003	684510	5906380	579	-45	180	27.6	60.3	<b>32.8</b>	<b>1.2</b>	55
		<i>Including</i>					49.0	57.3	8.3	2.4	45
Dyke #05	TR24-010	685363	5906065	569	-90	0	2.9	34.7	<b>31.8</b>	<b>2.2</b>	499
		<i>Including</i>					2.9	13.1	10.2	3.0	929
Dyke #04	KS24-007A	684440	5906367	571	-45	180	19.9	51.0	<b>31.1</b>	<b>1.5</b>	63
		<i>Including</i>					22.0	27.0	5.0	3.1	162
Dyke #05	TR24-008	685297	5906046	569	-70	10	11.0	39.7	<b>28.6</b>	<b>1.7</b>	1,050
		<i>Including</i>					13.9	19.7	5.9	2.7	4432
Dyke #05	TR24-002	685363	5906065	569	-70	20	1.9	29.9	<b>28.1</b>	<b>2.1</b>	66
		<i>Including</i>					5.1	12.3	7.2	3.0	71
Dyke #05	TR24-007	685297	5906046	569	-45	20	11.9	35.7	<b>23.8</b>	<b>1.7</b>	732
		<i>Including</i>					15.2	33.7	18.4	2.2	911
Dyke #05	TR24-001	685340	5906064	570	-70	20	7.0	29.6	<b>22.6</b>	<b>1.4</b>	70
		<i>Including</i>					8.5	18.5	10.0	2.2	133
Dyke #04	KS24-006	684477	5906368	575	-45	180	20.0	41.8	<b>21.8</b>	<b>1.4</b>	123
		<i>Including</i>					29.5	35.9	6.3	2.6	124
Dyke #05	TR24-003	685363	5906065	569	-90	0	2.3	19.6	<b>17.3</b>	<b>3.0</b>	1,460
		<i>Incomplete</i>					<i>Hole ended in pegmatite redrilled as TR24-010</i>				
Dyke #04	KS24-005	684499	5906348	576	-45	350	4.0	20.0	<b>16.0</b>	<b>1.4</b>	37
		<i>Including</i>					11.8	15.8	4.0	5.2	23
Dyke #05	TR24-011	685275	5906040	571	-45	0	34.2	49.7	<b>15.4</b>	<b>1.4</b>	60

The Metasedimentary host exhibits a Specific Gravity (Sg) of less than 2.8 g/cm<sup>3</sup> which is like pegmatitic waste, comprising predominantly quartz and feldspars. Intercepts calculated using pegmatite rock type and/or a 0.20% Li<sub>2</sub>O cut-off grade at margins, minimum 2m thickness and up to 6.1m of internal dilution.





**Image 1: Trieste Lithium Project – Core from Dyke #05 showing high grade mineralisation (TR2424-010).**



Image 2: Trieste Lithium Project– A 2.8m spodumene mega crystal being shown at Dyke #04 outcrop.

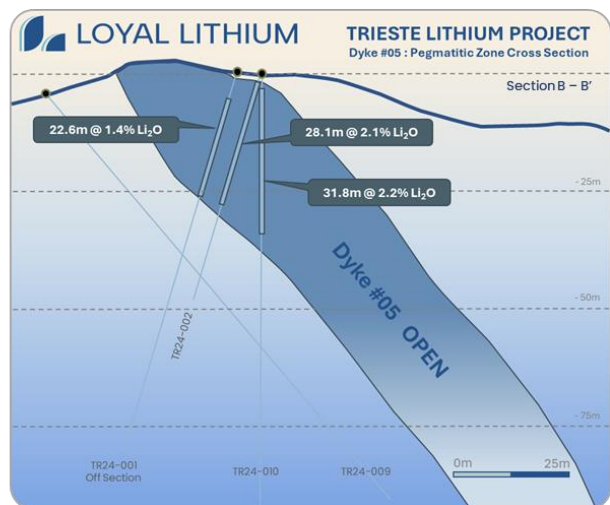
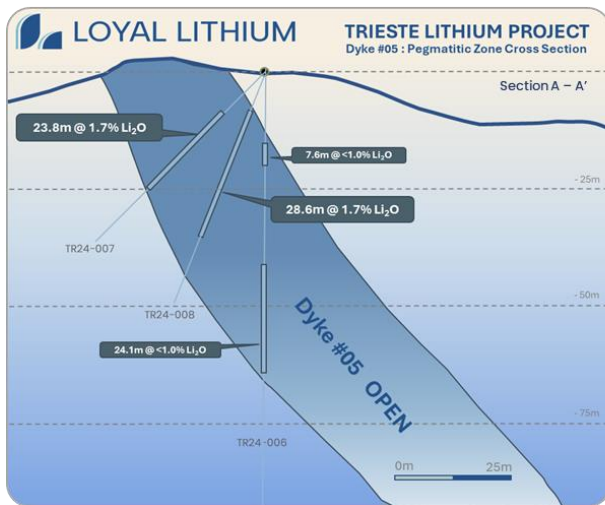
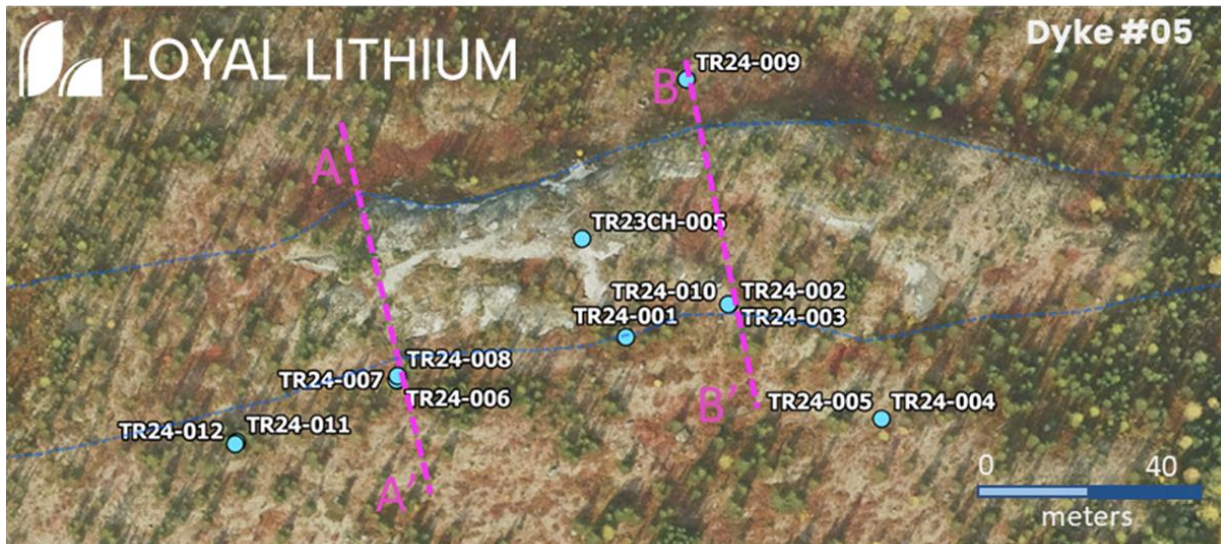
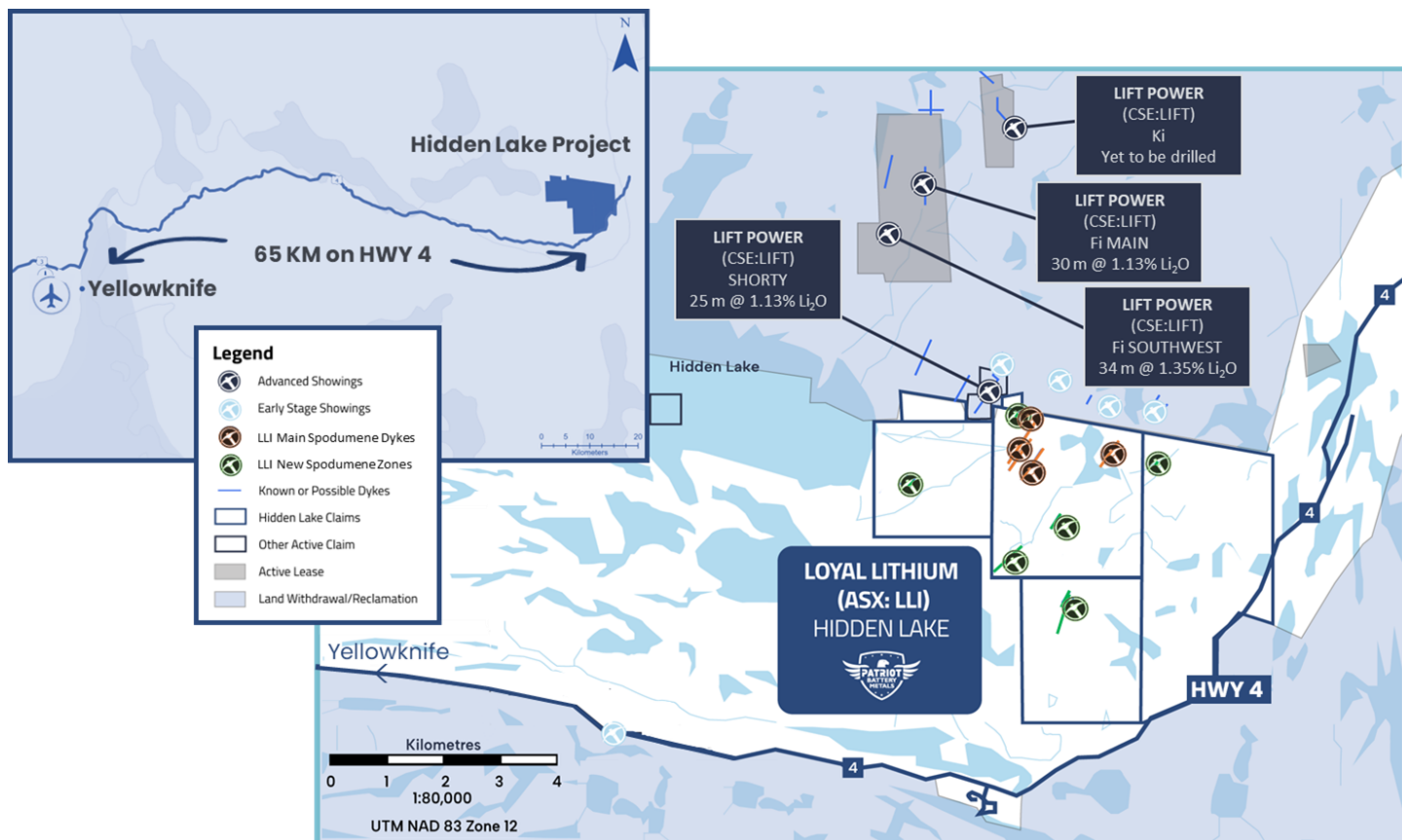


Image 3: Trieste Lithium Project - Dyke #05 drillhole locations and cross sections.

## HIDDEN LAKE LITHIUM PROJECT

The Hidden Lake Lithium Project is strategically located 65 km east of Yellowknife, the capital of the Northwest Territories, and is located within the emerging Yellowknife Lithium District adjacent to an all-weather highway to the south and east, and Li-FT Power’s (CSE: LIFT; FSE: WS0) properties to the North.

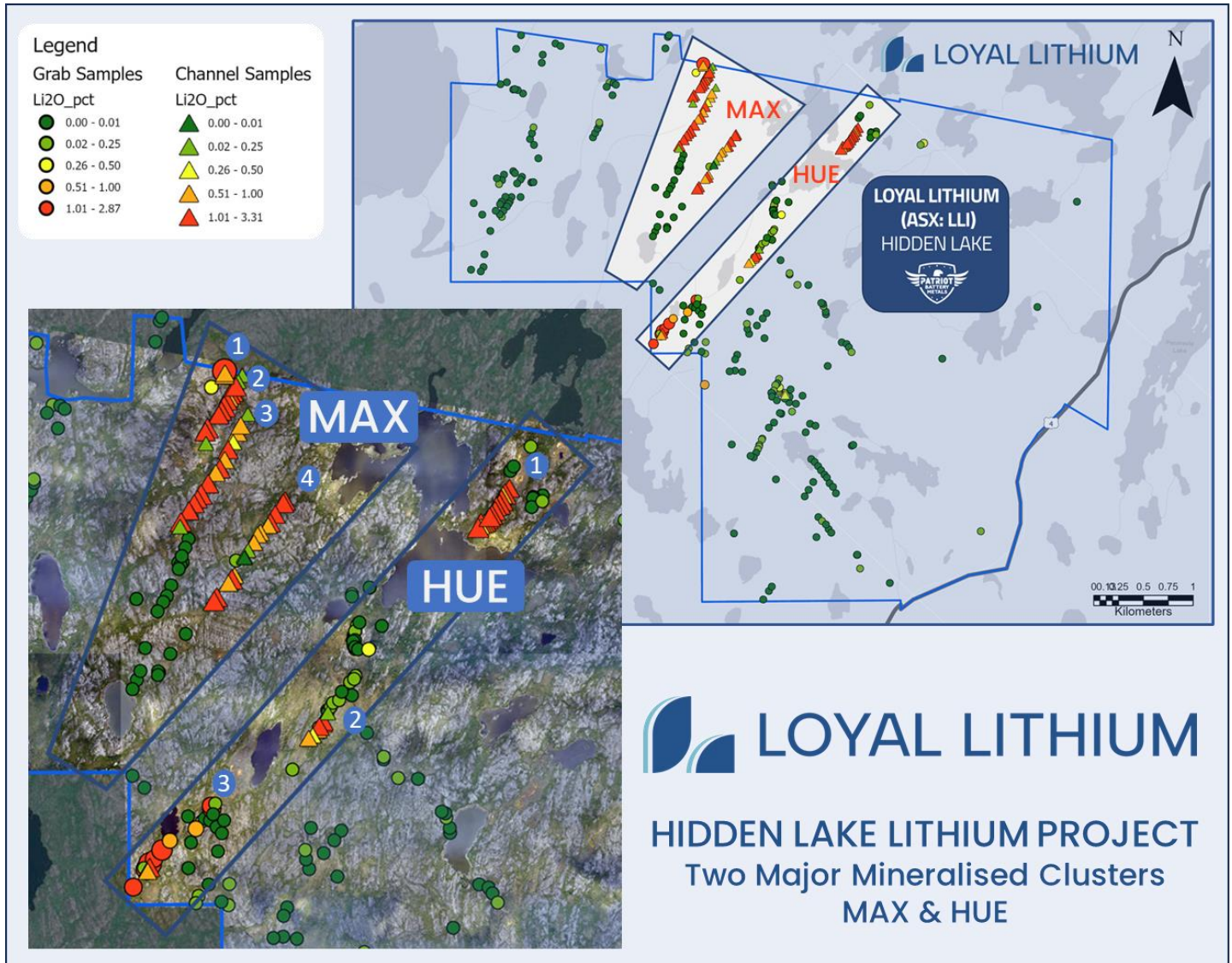


**Figure 4 – Hidden Lake Lithium Project: Yellowknife, Northwest Territories, Canada.**

During the Summer 2023, Loyal Lithium engaged its in-country geological partner, Dahrouge Geological Consulting, to conduct an extensive field mapping and sampling program at the Hidden Lake Lithium Project in the NWT, Canada. A program was conducted on 315 individual outcrops, identified via acquired high resolution visible and infrared satellite imagery and reprocessed lithium channel combination imagery. A total of 298 samples were collected for assay analysis during the fieldwork, 269 outcrop and 29 channel samples. The Company also conducted LiDAR and orthophoto airborne surveys across the entire property. Loyal Lithium was fortunate that the 2023 field program was completed prior to the forest fire induced evacuation orders at Yellowknife, NWT.

The four previously discovered spodumene bearing pegmatite dykes, with a cumulative strike length of 2,250m, were drilled in 2018 to a limited depth of 30–50 metres, with 10 drill hole intercepts of up to 1.81% Li<sub>2</sub>O.

Results from the 2023 summer field program were received during the last Quarter, and the Company announced that it had increased the collective surface mineralization strike length at Hidden Lake, from 2,250m to around 3,250m, a massive 44% increase in strike. This was determined through the analysis of both rock chip and channel samples collected from newly identified spodumene bearing outcrops, discovered during this 2023 summer field program.



**Figure 5 – Hidden Lake Lithium Project: Yellowknife, Northwest Territories, Canada.**

Extensive surface mineralisation was grouped within two major mineralised clusters (MAX & HUE), consisting of 7 inferred spodumene bearing pegmatite dykes. The Company has received a Land Use Permit to enable the commencement of a drilling program, which will target the mineralised clusters of MAX & HUE, whilst additional drilling locations also included at the other newly identified spodumene bearing zones elsewhere on the project.

The Hidden Lake Lithium Project benefits from a high-resolution aeromagnetics survey, orthographic imagery, and LiDAR data to refine drill targets and assess future development options.

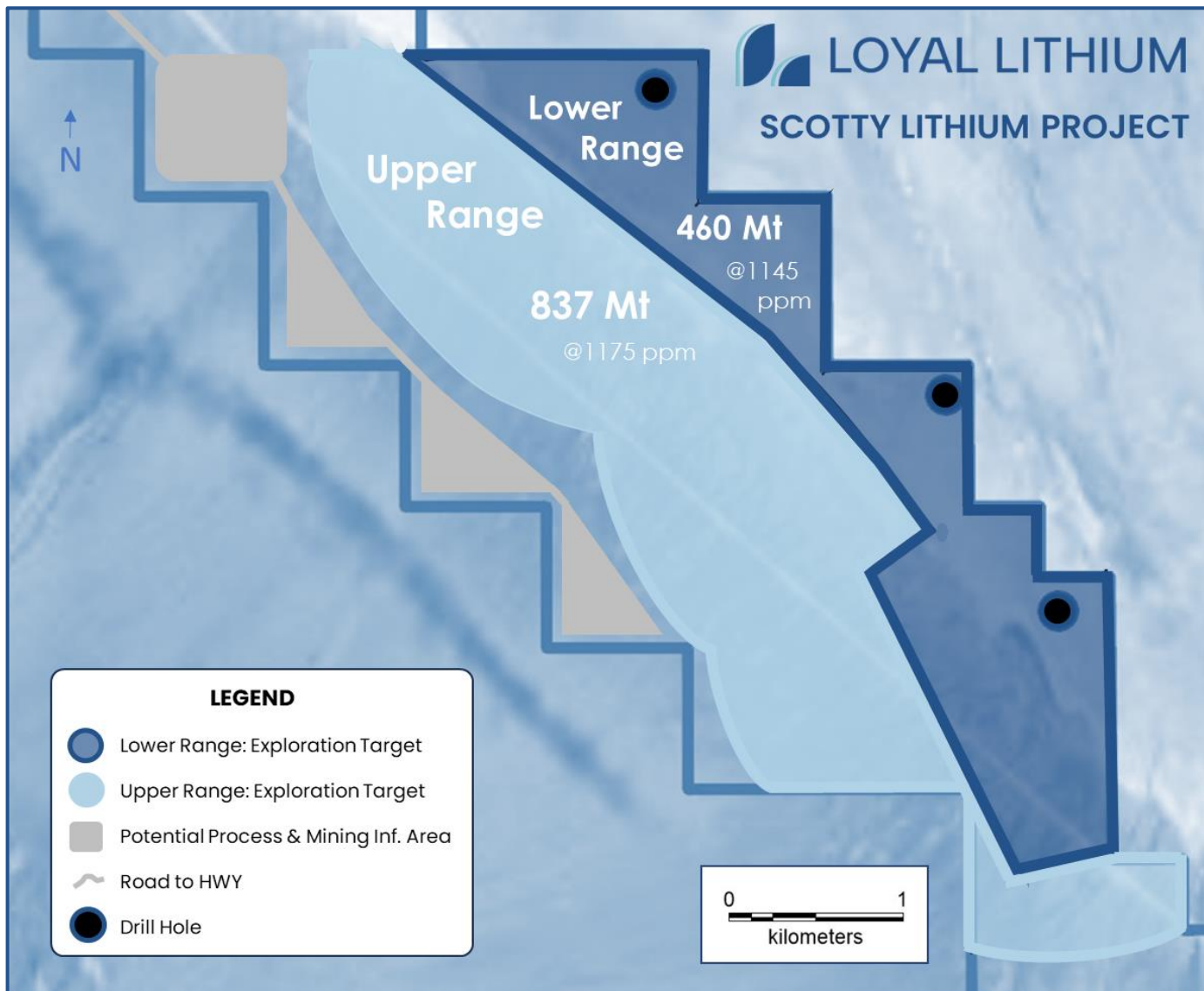
A Land Use Permit was issued to Loyal December quarter by the Northwest Territories Mackenzie Valley Land and Water Board (MVLWB). This permit was finalised after receiving MVLWB letters of conformity the current quarter. The Land Use Permit entitles Loyal to conduct operations including, a) Mineral exploration drilling; b) Use of equipment, vehicles, and machines; c) Use and storage of fuel; d) Operation, and maintenance of camps; e) Construction, operation, and maintenance of winter roads.

## SCOTTY LITHIUM PROJECT

The Scotty Lithium Project covers 56.5 km<sup>2</sup> of active claims, 67 km north of the mining town of Beatty and is accessible year-round via HWY 95 and HWY 267. The project is also strategically located via HWY 95, only 189 km northwest of Las Vegas, 330km from Tesla's Nevada Gigafactory and 517 km from Reno in the Tier 1 mining jurisdiction of Nevada, USA, proximal to existing power infrastructure. The Scotty Lithium Project is adjacent to the existing Nevada Lithium Ltd (CSE:NVLH) Bonnie Claire Project with similar geology and large drill intercepts of lithium mineralisation. Scotty is less than 100km from Albemarle's operational Silver Peak Mine in Clayton Valley (NYSE: ALB) and Ioneer's Rhyolite Ridge Lithium-Boron Project (ASX:INR).

The basin's 5.7km western edge offers the potential for a cost-effective mining solution due to its surface alluvial fan rocks, providing excellent accessibility for surface mining. Nevada Lithium's (CSE:NVLH) neighbouring Bonnie Claire Project has successfully produced battery grade lithium carbonate from its sedimentary basin drill cores.

The Scotty Lithium Project has strong mineralisation, with assay results from its inaugural sonic drilling campaign with average grades of 1,120ppm lithium (700ppm cut-off-grade), with a peak lithium value of 4,007ppm. The campaign consisted of 3 sonic drill holes, with an average depth of 171m for a total of 513m. These results allowed for an independent consultant determined JORC Exploration Target for the Project of 460 million tonnes (Mt) at 1145 ppm to 837 Mt at 1175 ppm at a 700ppm cut-off-grade, indicating a potentially significant large sediment hosted lithium resource. The potential quantities and grades are conceptual in nature and there has been insufficient exploration to estimate a Mineral Resource and the Company is uncertain if further exploration will result in the estimation of a Mineral Resource.



**Figure 6 – Scotty Lithium Project – Map showing the Exploration Target domains.**

## BRISK LITHIUM PROJECT

A total of 192 mining claims covering 98.5km<sup>2</sup> were acquired in 2022, which are divided into six separate claim blocks, extending over 70km in an east-west direction.

The Brisk Lithium Project contains several targets generated in the 2022 field campaign at Areas 1, 2 and 3 that require further field testing. Due to the capacity constraints of geological contractor availability during summer 2023 shortened field season, the Company prioritised fieldwork at the Trieste Lithium Project, the site of a major lithium discovery. A field program is planned at Brisk during the 2024 Canadian summer to test many more pegmatites identified in air photos, especially in the southeast of Area 1 if resources are available after exploration at Trieste.



**Figure 7 – Brisk Lithium Project.**

## WESTERN AUSTRALIA PROJECTS:

The conclusions from both the August and November 2022 Strategic Reviews <sup>(14)</sup> lists all West Australian gold and base metal assets as better suited for joint venture or divestment with the following highlights:

- At the Monger North Project a mining lease application was applied for across Loyal Lithium’s 16,400 oz gold JORC Inferred Mineral Resource Estimate during the quarter, which is open in two directions, with increasing gold grade found in fresh rock.
- Monger South Project: VMS style silver-zinc-copper outcrop assays linked with FLEM geophysics survey conductor anomaly drill target and other one Daisy Milano Trend concealed gold ultrafine soils anomalies.

*This announcement has been authorised for release by Loyal Lithium’s Board of Directors*

## For more information:

### Adam Ritchie

Chief Executive Officer  
 aritchie@loyallithium.com  
 +61 (0) 403 462 383

### Jane Morgan

Investor & Media Relations  
 jm@janemorganmanagement.com.au  
 + 61 (0) 405 555 618

## About Loyal Lithium

Loyal Lithium Limited (**ASX: LLI**) is a well-structured listed resource exploration company with projects in Tier 1 North American mining jurisdictions in the Northwest Territories, Canada, James Bay Lithium District in Quebec, Canada and Nevada, USA. Through the systematic exploration of its projects, the Company aims to outline JORC compliant resources, creating significant value for its shareholders.

## Future Performance

This announcement may contain certain forward-looking statements and opinion. Forward-looking statements, including projections, forecasts and estimates, are provided as a general guide only and should not be relied on as an indication or guarantee of future performance and involve known and unknown risks, uncertainties, assumptions, contingencies and other important factors, many of which are outside the control of the Company and which are subject to change without notice and could cause the actual results, performance or achievements of the Company to be materially different from the future results, performance or achievements expressed or implied by such statements. Past performance is not necessarily a guide to future performance and no representation or warranty is made as to the likelihood of achievement or reasonableness of any forward-looking statements or other forecast. Nothing contained in this announcement, nor any information made available to you is, or and shall be relied upon as, a promise, representation, warranty or guarantee as to the past, present or the future performance of Loyal Lithium Limited.

## Qualified and Competent Person

The information in this announcement that relates to exploration results, is based, and fairly reflects, information compiled by Mr D. Allingham, who is the Company's geologist. Mr Allingham is a Fellow of the Australian Institute of Geoscientists. Mr Allingham has sufficient experience which is relevant to the style of mineralisation and type of deposit under consideration and the activity he is undertaking to qualify as a *Competent Person* as defined in the 2012 Edition of the Australasian Code for Reporting of Exploration Results and Mineral Resources (JORC Code). Mr Allingham consents to the inclusion in the announcement of the matters based on the information in the form and context in which it appears.

## References

<sup>1</sup> LLI ASX Announcement: 2 January 2024: High Grade Channel Assay Results at Trieste Lithium Project, James Bay, Quebec, Canada.

<sup>2</sup> LLI ASX Announcement: 5 February 2024: Geological Interpretation Exposes the Potential Scale of the Trieste Lithium Project, James Bay, Quebec, Canada.

<sup>3</sup> LLI ASX Announcement: 4 December 2023: New Discovery of 6th Spodumene Bearing Pegmatite Dyke at the Trieste Lithium Project, James Bay, Quebec, Canada.

<sup>4</sup> LLI ASX Announcement: 18 January 2024: Major Lithium Discovery Confirmed from First Drillhole Assays at Trieste Lithium Project, James Bay, Quebec, Canada.

<sup>5</sup> LLI ASX Announcement: 21 March 2024: World Class Lithium and Tantalum Grades recorded within Dyke #05 Drill Intercepts at Trieste Lithium Project, James Bay, Quebec, Canada.

<sup>6</sup> LLI ASX Announcement: 18 April 2024: Innovative Geophysical Survey to Reveal the Potential Scale of the Trieste Lithium Project, James Bay, Quebec, Canada.

<sup>7</sup> LLI ASX Announcement: 16 August 2023: Multiple Spodumene Bearing Pegmatite Dykes Discovered at the Trieste Lithium Project, James Bay, Canada.

<sup>8</sup> WRI ASX Announcement: 11 December 2023: Globally significant maiden Mineral Resource of 59 Mt at 100% owned Adina Lithium Project.

<sup>9</sup> LLI ASX Announcement: 21 September 2023: Collaboration MOU signed with Winsome Resources for the Trieste Lithium Project, James Bay, Quebec, Canada.





LOYAL LITHIUM

<sup>10</sup> LLI ASX Announcement: 26 April 2024: Trieste Lithium Project Takes Shape with More Thick High Grade Intercepts from Dyke #04 - James Bay, Quebec, Canada

<sup>11</sup> LLI ASX Announcement: 19 October 2023: Cumulative Mineralised Strike Length extends to 3,250m at the Hidden Lake Lithium Project, NWT, Canada.

<sup>12</sup> LLI ASX Announcement: 11 August 2023: Drilling Confirms Significant Lithium Discovery at the Scotty Lithium Project, Nevada, USA.

<sup>13</sup> LLI ASX Announcement: 29 September 2023: Sediment Hosted Lithium Exploration Target Defined at the Scotty Lithium Project, Nevada, USA.

<sup>14</sup> LLI ASX Announcement: 12 December 2022: Lithium Operational Update - James Bay Quebec, Canada.

<sup>15</sup> LLI ASX Amended Announcement: 15 November 2022: West Australian Gold and Base Metal Assets - Operations Update.

<sup>16</sup> LLI ASX Announcement: 4 July 2022: Providence Gold Deposit Maiden Mineral Resource Estimate

**TENEMENT TABLE: ASX LISTING RULE 5.3.3**

Mining tenement interest held at the end of the quarter and their location.

Claim Number	Location	Nature	Status	Interest
BLM Serial No.	Scotty	698	Claims	
NV105752975	Scotty	Direct Option	Active	100%
NV105752977	Scotty	Direct Option	Active	100%
NV105752978	Scotty	Direct Option	Active	100%
NV105752979	Scotty	Direct Option	Active	100%
NV105752980	Scotty	Direct Option	Active	100%
NV105752981	Scotty	Direct Option	Active	100%
NV105752982	Scotty	Direct Option	Active	100%
NV105752983	Scotty	Direct Option	Active	100%
NV105752984	Scotty	Direct Option	Active	100%
NV105752985	Scotty	Direct Option	Active	100%
NV105752986	Scotty	Direct Option	Active	100%
NV105752987	Scotty	Direct Option	Active	100%
NV105752988	Scotty	Direct Option	Active	100%
NV105752989	Scotty	Direct Option	Active	100%
NV105752990	Scotty	Direct Option	Active	100%
NV105752991	Scotty	Direct Option	Active	100%
NV105752992	Scotty	Direct Option	Active	100%
NV105752993	Scotty	Direct Option	Active	100%
NV105752994	Scotty	Direct Option	Active	100%
NV105752995	Scotty	Direct Option	Active	100%
NV105752996	Scotty	Direct Option	Active	100%
NV105752998	Scotty	Direct Option	Active	100%
NV105752999	Scotty	Direct Option	Active	100%
NV105753000	Scotty	Direct Option	Active	100%
NV105753001	Scotty	Direct Option	Active	100%
NV105753002	Scotty	Direct Option	Active	100%
NV105753003	Scotty	Direct Option	Active	100%
NV105753004	Scotty	Direct Option	Active	100%
NV105753005	Scotty	Direct Option	Active	100%
NV105753006	Scotty	Direct Option	Active	100%
NV105753007	Scotty	Direct Option	Active	100%
NV105753008	Scotty	Direct Option	Active	100%
NV105753009	Scotty	Direct Option	Active	100%
NV105753010	Scotty	Direct Option	Active	100%
NV105753011	Scotty	Direct Option	Active	100%
NV105753012	Scotty	Direct Option	Active	100%
NV105753013	Scotty	Direct Option	Active	100%
NV105753014	Scotty	Direct Option	Active	100%
NV105753015	Scotty	Direct Option	Active	100%



NV105753016	Scotty	Direct Option	Active	100%
NV105753017	Scotty	Direct Option	Active	100%
NV105753018	Scotty	Direct Option	Active	100%
NV105753019	Scotty	Direct Option	Active	100%
NV105753020	Scotty	Direct Option	Active	100%
NV105753021	Scotty	Direct Option	Active	100%
NV105753022	Scotty	Direct Option	Active	100%
NV105753023	Scotty	Direct Option	Active	100%
NV105753024	Scotty	Direct Option	Active	100%
NV105753025	Scotty	Direct Option	Active	100%
NV105753026	Scotty	Direct Option	Active	100%
NV105753027	Scotty	Direct Option	Active	100%
NV105753028	Scotty	Direct Option	Active	100%
NV105753029	Scotty	Direct Option	Active	100%
NV105753030	Scotty	Direct Option	Active	100%
NV105753031	Scotty	Direct Option	Active	100%
NV105753032	Scotty	Direct Option	Active	100%
NV105753033	Scotty	Direct Option	Active	100%
NV105753034	Scotty	Direct Option	Active	100%
NV105753035	Scotty	Direct Option	Active	100%
NV105753036	Scotty	Direct Option	Active	100%
NV105753037	Scotty	Direct Option	Active	100%
NV105753038	Scotty	Direct Option	Active	100%
NV105753039	Scotty	Direct Option	Active	100%
NV105753040	Scotty	Direct Option	Active	100%
NV105753041	Scotty	Direct Option	Active	100%
NV105753042	Scotty	Direct Option	Active	100%
NV105753043	Scotty	Direct Option	Active	100%
NV105753044	Scotty	Direct Option	Active	100%
NV105753045	Scotty	Direct Option	Active	100%
NV105753046	Scotty	Direct Option	Active	100%
NV105753047	Scotty	Direct Option	Active	100%
NV105753048	Scotty	Direct Option	Active	100%
NV105753049	Scotty	Direct Option	Active	100%
NV105753050	Scotty	Direct Option	Active	100%
NV105753051	Scotty	Direct Option	Active	100%
NV105753052	Scotty	Direct Option	Active	100%
NV105753053	Scotty	Direct Option	Active	100%
NV105753054	Scotty	Direct Option	Active	100%
NV105753055	Scotty	Direct Option	Active	100%
NV105753056	Scotty	Direct Option	Active	100%
NV105753057	Scotty	Direct Option	Active	100%
NV105753058	Scotty	Direct Option	Active	100%
NV105753059	Scotty	Direct Option	Active	100%



NV105753060	Scotty	Direct Option	Active	100%
NV105753061	Scotty	Direct Option	Active	100%
NV105753062	Scotty	Direct Option	Active	100%
NV105753063	Scotty	Direct Option	Active	100%
NV105753064	Scotty	Direct Option	Active	100%
NV105753065	Scotty	Direct Option	Active	100%
NV105753066	Scotty	Direct Option	Active	100%
NV105753067	Scotty	Direct Option	Active	100%
NV105753068	Scotty	Direct Option	Active	100%
NV105753069	Scotty	Direct Option	Active	100%
NV105753070	Scotty	Direct Option	Active	100%
NV105753071	Scotty	Direct Option	Active	100%
NV105753072	Scotty	Direct Option	Active	100%
NV105753073	Scotty	Direct Option	Active	100%
NV105753074	Scotty	Direct Option	Active	100%
NV105753075	Scotty	Direct Option	Active	100%
NV105753076	Scotty	Direct Option	Active	100%
NV105753077	Scotty	Direct Option	Active	100%
NV105753078	Scotty	Direct Option	Active	100%
NV105753079	Scotty	Direct Option	Active	100%
NV105753080	Scotty	Direct Option	Active	100%
NV105753081	Scotty	Direct Option	Active	100%
NV105753082	Scotty	Direct Option	Active	100%
NV105753083	Scotty	Direct Option	Active	100%
NV105753084	Scotty	Direct Option	Active	100%
NV105753085	Scotty	Direct Option	Active	100%
NV105753086	Scotty	Direct Option	Active	100%
NV105753087	Scotty	Direct Option	Active	100%
NV105753088	Scotty	Direct Option	Active	100%
NV105753089	Scotty	Direct Option	Active	100%
NV105753090	Scotty	Direct Option	Active	100%
NV105753091	Scotty	Direct Option	Active	100%
NV105753092	Scotty	Direct Option	Active	100%
NV105753093	Scotty	Direct Option	Active	100%
NV105753094	Scotty	Direct Option	Active	100%
NV105753095	Scotty	Direct Option	Active	100%
NV105753096	Scotty	Direct Option	Active	100%
NV105753097	Scotty	Direct Option	Active	100%
NV105753098	Scotty	Direct Option	Active	100%
NV105753099	Scotty	Direct Option	Active	100%
NV105753100	Scotty	Direct Option	Active	100%
NV105753101	Scotty	Direct Option	Active	100%
NV105753102	Scotty	Direct Option	Active	100%
NV105753103	Scotty	Direct Option	Active	100%

NV105753104	Scotty	Direct Option	Active	100%
NV105753105	Scotty	Direct Option	Active	100%
NV105753106	Scotty	Direct Option	Active	100%
NV105753107	Scotty	Direct Option	Active	100%
NV105753108	Scotty	Direct Option	Active	100%
NV105753109	Scotty	Direct Option	Active	100%
NV105753110	Scotty	Direct Option	Active	100%
NV105753111	Scotty	Direct Option	Active	100%
NV105753112	Scotty	Direct Option	Active	100%
NV105753113	Scotty	Direct Option	Active	100%
NV105753114	Scotty	Direct Option	Active	100%
NV105753115	Scotty	Direct Option	Active	100%
NV105753116	Scotty	Direct Option	Active	100%
NV105753117	Scotty	Direct Option	Active	100%
NV105753118	Scotty	Direct Option	Active	100%
NV105753119	Scotty	Direct Option	Active	100%
NV105753120	Scotty	Direct Option	Active	100%
NV105753121	Scotty	Direct Option	Active	100%
NV105753122	Scotty	Direct Option	Active	100%
NV105753123	Scotty	Direct Option	Active	100%
NV105753124	Scotty	Direct Option	Active	100%
NV105753125	Scotty	Direct Option	Active	100%
NV105753126	Scotty	Direct Option	Active	100%
NV105753127	Scotty	Direct Option	Active	100%
NV105753128	Scotty	Direct Option	Active	100%
NV105753129	Scotty	Direct Option	Active	100%
NV105753130	Scotty	Direct Option	Active	100%
NV105753131	Scotty	Direct Option	Active	100%
NV105753132	Scotty	Direct Option	Active	100%
NV105753133	Scotty	Direct Option	Active	100%
NV105753134	Scotty	Direct Option	Active	100%
NV105753135	Scotty	Direct Option	Active	100%
NV105753136	Scotty	Direct Option	Active	100%
NV105753137	Scotty	Direct Option	Active	100%
NV105753138	Scotty	Direct Option	Active	100%
NV105753139	Scotty	Direct Option	Active	100%
NV105753140	Scotty	Direct Option	Active	100%
NV105753141	Scotty	Direct Option	Active	100%
NV105753142	Scotty	Direct Option	Active	100%
NV105753143	Scotty	Direct Option	Active	100%
NV105753144	Scotty	Direct Option	Active	100%
NV105753145	Scotty	Direct Option	Active	100%
NV105753146	Scotty	Direct Option	Active	100%
NV105753147	Scotty	Direct Option	Active	100%



NV105753148	Scotty	Direct Option	Active	100%
NV105753149	Scotty	Direct Option	Active	100%
NV105753150	Scotty	Direct Option	Active	100%
NV105753151	Scotty	Direct Option	Active	100%
NV105753152	Scotty	Direct Option	Active	100%
NV105753153	Scotty	Direct Option	Active	100%
NV105753154	Scotty	Direct Option	Active	100%
NV105753155	Scotty	Direct Option	Active	100%
NV105753156	Scotty	Direct Option	Active	100%
NV105753157	Scotty	Direct Option	Active	100%
NV105753158	Scotty	Direct Option	Active	100%
NV105753159	Scotty	Direct Option	Active	100%
NV105753160	Scotty	Direct Option	Active	100%
NV105753161	Scotty	Direct Option	Active	100%
NV105753162	Scotty	Direct Option	Active	100%
NV105753163	Scotty	Direct Option	Active	100%
NV105753164	Scotty	Direct Option	Active	100%
NV105753165	Scotty	Direct Option	Active	100%
NV105753166	Scotty	Direct Option	Active	100%
NV105753167	Scotty	Direct Option	Active	100%
NV105753168	Scotty	Direct Option	Active	100%
NV105753169	Scotty	Direct Option	Active	100%
NV105753170	Scotty	Direct Option	Active	100%
NV105753171	Scotty	Direct Option	Active	100%
NV105753172	Scotty	Direct Option	Active	100%
NV105753173	Scotty	Direct Option	Active	100%
NV105753174	Scotty	Direct Option	Active	100%
NV105753175	Scotty	Direct Option	Active	100%
NV105753176	Scotty	Direct Option	Active	100%
NV105753177	Scotty	Direct Option	Active	100%
NV105753178	Scotty	Direct Option	Active	100%
NV105753179	Scotty	Direct Option	Active	100%
NV105753180	Scotty	Direct Option	Active	100%
NV105753181	Scotty	Direct Option	Active	100%
NV105753182	Scotty	Direct Option	Active	100%
NV105753183	Scotty	Direct Option	Active	100%
NV105753184	Scotty	Direct Option	Active	100%
NV105753185	Scotty	Direct Option	Active	100%
NV105753186	Scotty	Direct Option	Active	100%
NV105753187	Scotty	Direct Option	Active	100%
NV105753188	Scotty	Direct Option	Active	100%
NV105753189	Scotty	Direct Option	Active	100%
NV105753190	Scotty	Direct Option	Active	100%
NV105753191	Scotty	Direct Option	Active	100%



NV105753192	Scotty	Direct Option	Active	100%
NV105753193	Scotty	Direct Option	Active	100%
NV105753194	Scotty	Direct Option	Active	100%
NV105753195	Scotty	Direct Option	Active	100%
NV105753196	Scotty	Direct Option	Active	100%
NV105753197	Scotty	Direct Option	Active	100%
NV105753198	Scotty	Direct Option	Active	100%
NV105753199	Scotty	Direct Option	Active	100%
NV105753200	Scotty	Direct Option	Active	100%
NV105753201	Scotty	Direct Option	Active	100%
NV105753202	Scotty	Direct Option	Active	100%
NV105753203	Scotty	Direct Option	Active	100%
NV105753204	Scotty	Direct Option	Active	100%
NV105753205	Scotty	Direct Option	Active	100%
NV105753206	Scotty	Direct Option	Active	100%
NV105753207	Scotty	Direct Option	Active	100%
NV105753208	Scotty	Direct Option	Active	100%
NV105753209	Scotty	Direct Option	Active	100%
NV105753210	Scotty	Direct Option	Active	100%
NV105753211	Scotty	Direct Option	Active	100%
NV105753212	Scotty	Direct Option	Active	100%
NV105753213	Scotty	Direct Option	Active	100%
NV105753214	Scotty	Direct Option	Active	100%
NV105753215	Scotty	Direct Option	Active	100%
NV105753216	Scotty	Direct Option	Active	100%
NV105753217	Scotty	Direct Option	Active	100%
NV105753218	Scotty	Direct Option	Active	100%
NV105753219	Scotty	Direct Option	Active	100%
NV105753220	Scotty	Direct Option	Active	100%
NV105753221	Scotty	Direct Option	Active	100%
NV105753222	Scotty	Direct Option	Active	100%
NV105753223	Scotty	Direct Option	Active	100%
NV105753224	Scotty	Direct Option	Active	100%
NV105753225	Scotty	Direct Option	Active	100%
NV105753226	Scotty	Direct Option	Active	100%
NV105753227	Scotty	Direct Option	Active	100%
NV105753228	Scotty	Direct Option	Active	100%
NV105753229	Scotty	Direct Option	Active	100%
NV105753230	Scotty	Direct Option	Active	100%
NV105753231	Scotty	Direct Option	Active	100%
NV105753232	Scotty	Direct Option	Active	100%
NV105753233	Scotty	Direct Option	Active	100%
NV105753234	Scotty	Direct Option	Active	100%
NV105753235	Scotty	Direct Option	Active	100%



NV105753236	Scotty	Direct Option	Active	100%
NV105753237	Scotty	Direct Option	Active	100%
NV105753238	Scotty	Direct Option	Active	100%
NV105753239	Scotty	Direct Option	Active	100%
NV105753240	Scotty	Direct Option	Active	100%
NV105753241	Scotty	Direct Option	Active	100%
NV105753242	Scotty	Direct Option	Active	100%
NV105753243	Scotty	Direct Option	Active	100%
NV105753244	Scotty	Direct Option	Active	100%
NV105753245	Scotty	Direct Option	Active	100%
NV105753246	Scotty	Direct Option	Active	100%
NV105753247	Scotty	Direct Option	Active	100%
NV105753248	Scotty	Direct Option	Active	100%
NV105753249	Scotty	Direct Option	Active	100%
NV105753250	Scotty	Direct Option	Active	100%
NV105753251	Scotty	Direct Option	Active	100%
NV105753252	Scotty	Direct Option	Active	100%
NV105753253	Scotty	Direct Option	Active	100%
NV105753254	Scotty	Direct Option	Active	100%
NV105753255	Scotty	Direct Option	Active	100%
NV105753256	Scotty	Direct Option	Active	100%
NV105753257	Scotty	Direct Option	Active	100%
NV105753258	Scotty	Direct Option	Active	100%
NV105753259	Scotty	Direct Option	Active	100%
NV105753260	Scotty	Direct Option	Active	100%
NV105753261	Scotty	Direct Option	Active	100%
NV105753262	Scotty	Direct Option	Active	100%
NV105753263	Scotty	Direct Option	Active	100%
NV105753264	Scotty	Direct Option	Active	100%
NV105753265	Scotty	Direct Option	Active	100%
NV105753266	Scotty	Direct Option	Active	100%
NV105753267	Scotty	Direct Option	Active	100%
NV105753268	Scotty	Direct Option	Active	100%
NV105753269	Scotty	Direct Option	Active	100%
NV105753270	Scotty	Direct Option	Active	100%
NV105753271	Scotty	Direct Option	Active	100%
NV105753272	Scotty	Direct Option	Active	100%
NV105753273	Scotty	Direct Option	Active	100%
NV105753274	Scotty	Direct Option	Active	100%
NV105753275	Scotty	Direct Option	Active	100%
NV105753276	Scotty	Direct Option	Active	100%
NV105753277	Scotty	Direct Option	Active	100%
NV105753278	Scotty	Direct Option	Active	100%
NV105753279	Scotty	Direct Option	Active	100%





NV105753280	Scotty	Direct Option	Active	100%
NV105753281	Scotty	Direct Option	Active	100%
NV105753282	Scotty	Direct Option	Active	100%
NV105753283	Scotty	Direct Option	Active	100%
NV105753284	Scotty	Direct Option	Active	100%
NV105753285	Scotty	Direct Option	Active	100%
NV105753286	Scotty	Direct Option	Active	100%
NV105753287	Scotty	Direct Option	Active	100%
NV105753288	Scotty	Direct Option	Active	100%
NV105753289	Scotty	Direct Option	Active	100%
NV105753290	Scotty	Direct Option	Active	100%
NV105753291	Scotty	Direct Option	Active	100%
NV105753292	Scotty	Direct Option	Active	100%
NV105753293	Scotty	Direct Option	Active	100%
NV105753294	Scotty	Direct Option	Active	100%
NV105753295	Scotty	Direct Option	Active	100%
NV105753296	Scotty	Direct Option	Active	100%
NV105753297	Scotty	Direct Option	Active	100%
NV105753298	Scotty	Direct Option	Active	100%
NV105753299	Scotty	Direct Option	Active	100%
NV105753300	Scotty	Direct Option	Active	100%
NV105753301	Scotty	Direct Option	Active	100%
NV105753302	Scotty	Direct Option	Active	100%
NV105753303	Scotty	Direct Option	Active	100%
NV105753304	Scotty	Direct Option	Active	100%
NV105753305	Scotty	Direct Option	Active	100%
NV105753306	Scotty	Direct Option	Active	100%
NV105753307	Scotty	Direct Option	Active	100%
NV105753308	Scotty	Direct Option	Active	100%
NV105753309	Scotty	Direct Option	Active	100%
NV105753310	Scotty	Direct Option	Active	100%
NV105753311	Scotty	Direct Option	Active	100%
NV105753312	Scotty	Direct Option	Active	100%
NV105753313	Scotty	Direct Option	Active	100%
NV105753314	Scotty	Direct Option	Active	100%
NV105753315	Scotty	Direct Option	Active	100%
NV105753316	Scotty	Direct Option	Active	100%
NV105753317	Scotty	Direct Option	Active	100%
NV105753318	Scotty	Direct Option	Active	100%
NV105753319	Scotty	Direct Option	Active	100%
NV105753320	Scotty	Direct Option	Active	100%
NV105753321	Scotty	Direct Option	Active	100%
NV105753322	Scotty	Direct Option	Active	100%
NV105753323	Scotty	Direct Option	Active	100%



NV105753324	Scotty	Direct Option	Active	100%
NV105753325	Scotty	Direct Option	Active	100%
NV105753326	Scotty	Direct Option	Active	100%
NV105753327	Scotty	Direct Option	Active	100%
NV105753328	Scotty	Direct Option	Active	100%
NV105753329	Scotty	Direct Option	Active	100%
NV105753330	Scotty	Direct Option	Active	100%
NV105753331	Scotty	Direct Option	Active	100%
NV105753332	Scotty	Direct Option	Active	100%
NV105753333	Scotty	Direct Option	Active	100%
NV105753334	Scotty	Direct Option	Active	100%
NV105753335	Scotty	Direct Option	Active	100%
NV105753336	Scotty	Direct Option	Active	100%
NV105753337	Scotty	Direct Option	Active	100%
NV105753338	Scotty	Direct Option	Active	100%
NV105753339	Scotty	Direct Option	Active	100%
NV105753340	Scotty	Direct Option	Active	100%
NV105753341	Scotty	Direct Option	Active	100%
NV105753342	Scotty	Direct Option	Active	100%
NV105753343	Scotty	Direct Option	Active	100%
NV105753344	Scotty	Direct Option	Active	100%
NV105753345	Scotty	Direct Option	Active	100%
NV105753346	Scotty	Direct Option	Active	100%
NV105753347	Scotty	Direct Option	Active	100%
NV105753348	Scotty	Direct Option	Active	100%
NV105753349	Scotty	Direct Option	Active	100%
NV105753350	Scotty	Direct Option	Active	100%
NV105753351	Scotty	Direct Option	Active	100%
NV105753352	Scotty	Direct Option	Active	100%
NV105753353	Scotty	Direct Option	Active	100%
NV105753354	Scotty	Direct Option	Active	100%
NV105753355	Scotty	Direct Option	Active	100%
NV105753356	Scotty	Direct Option	Active	100%
NV105753357	Scotty	Direct Option	Active	100%
NV105753358	Scotty	Direct Option	Active	100%
NV105753359	Scotty	Direct Option	Active	100%
NV105753360	Scotty	Direct Option	Active	100%
NV105753361	Scotty	Direct Option	Active	100%
NV105753362	Scotty	Direct Option	Active	100%
NV105753363	Scotty	Direct Option	Active	100%
NV105753364	Scotty	Direct Option	Active	100%
NV105753365	Scotty	Direct Option	Active	100%
NV105753366	Scotty	Direct Option	Active	100%
NV105753367	Scotty	Direct Option	Active	100%



NV105753368	Scotty	Direct Option	Active	100%
NV105753369	Scotty	Direct Option	Active	100%
NV105753370	Scotty	Direct Option	Active	100%
NV105753371	Scotty	Direct Option	Active	100%
NV105753372	Scotty	Direct Option	Active	100%
NV105753373	Scotty	Direct Option	Active	100%
NV105753374	Scotty	Direct Option	Active	100%
NV105753375	Scotty	Direct Option	Active	100%
NV105753376	Scotty	Direct Option	Active	100%
NV105753377	Scotty	Direct Option	Active	100%
NV105753378	Scotty	Direct Option	Active	100%
NV105753379	Scotty	Direct Option	Active	100%
NV105753380	Scotty	Direct Option	Active	100%
NV105753381	Scotty	Direct Option	Active	100%
NV105753382	Scotty	Direct Option	Active	100%
NV105753383	Scotty	Direct Option	Active	100%
NV105753384	Scotty	Direct Option	Active	100%
NV105753385	Scotty	Direct Option	Active	100%
NV105753386	Scotty	Direct Option	Active	100%
NV105753387	Scotty	Direct Option	Active	100%
NV105753388	Scotty	Direct Option	Active	100%
NV105753389	Scotty	Direct Option	Active	100%
NV105753390	Scotty	Direct Option	Active	100%
NV105753391	Scotty	Direct Option	Active	100%
NV105753392	Scotty	Direct Option	Active	100%
NV105753393	Scotty	Direct Option	Active	100%
NV105753394	Scotty	Direct Option	Active	100%
NV105753395	Scotty	Direct Option	Active	100%
NV105753396	Scotty	Direct Option	Active	100%
NV105753397	Scotty	Direct Option	Active	100%
NV105753398	Scotty	Direct Option	Active	100%
NV105753399	Scotty	Direct Option	Active	100%
NV105753400	Scotty	Direct Option	Active	100%
NV105753401	Scotty	Direct Option	Active	100%
NV105753402	Scotty	Direct Option	Active	100%
NV105753403	Scotty	Direct Option	Active	100%
NV105753404	Scotty	Direct Option	Active	100%
NV105753405	Scotty	Direct Option	Active	100%
NV105753406	Scotty	Direct Option	Active	100%
NV105753407	Scotty	Direct Option	Active	100%
NV105753408	Scotty	Direct Option	Active	100%
NV105753409	Scotty	Direct Option	Active	100%
NV105753410	Scotty	Direct Option	Active	100%
NV105753411	Scotty	Direct Option	Active	100%



NV105753412	Scotty	Direct Option	Active	100%
NV105753413	Scotty	Direct Option	Active	100%
NV105753414	Scotty	Direct Option	Active	100%
NV105753415	Scotty	Direct Option	Active	100%
NV105753416	Scotty	Direct Option	Active	100%
NV105753417	Scotty	Direct Option	Active	100%
NV105753418	Scotty	Direct Option	Active	100%
NV105753419	Scotty	Direct Option	Active	100%
NV105753420	Scotty	Direct Option	Active	100%
NV105753421	Scotty	Direct Option	Active	100%
NV105753422	Scotty	Direct Option	Active	100%
NV105753423	Scotty	Direct Option	Active	100%
NV105753424	Scotty	Direct Option	Active	100%
NV105753425	Scotty	Direct Option	Active	100%
NV105753426	Scotty	Direct Option	Active	100%
NV105753427	Scotty	Direct Option	Active	100%
NV105753428	Scotty	Direct Option	Active	100%
NV105753429	Scotty	Direct Option	Active	100%
NV105753430	Scotty	Direct Option	Active	100%
NV105753431	Scotty	Direct Option	Active	100%
NV105753432	Scotty	Direct Option	Active	100%
NV105753433	Scotty	Direct Option	Active	100%
NV105753434	Scotty	Direct Option	Active	100%
NV105753435	Scotty	Direct Option	Active	100%
NV105753436	Scotty	Direct Option	Active	100%
NV105753437	Scotty	Direct Option	Active	100%
NV105753438	Scotty	Direct Option	Active	100%
NV105753439	Scotty	Direct Option	Active	100%
NV105753440	Scotty	Direct Option	Active	100%
NV105753441	Scotty	Direct Option	Active	100%
NV105753442	Scotty	Direct Option	Active	100%
NV105753443	Scotty	Direct Option	Active	100%
NV105753444	Scotty	Direct Option	Active	100%
NV105753445	Scotty	Direct Option	Active	100%
NV105753446	Scotty	Direct Option	Active	100%
NV105753447	Scotty	Direct Option	Active	100%
NV105753448	Scotty	Direct Option	Active	100%
NV105753449	Scotty	Direct Option	Active	100%
NV105753450	Scotty	Direct Option	Active	100%
NV105753451	Scotty	Direct Option	Active	100%
NV105753452	Scotty	Direct Option	Active	100%
NV105753453	Scotty	Direct Option	Active	100%
NV105753454	Scotty	Direct Option	Active	100%
NV105753455	Scotty	Direct Option	Active	100%



NV105753456	Scotty	Direct Option	Active	100%
NV105753457	Scotty	Direct Option	Active	100%
NV105753458	Scotty	Direct Option	Active	100%
NV105753459	Scotty	Direct Option	Active	100%
NV105753460	Scotty	Direct Option	Active	100%
NV105753461	Scotty	Direct Option	Active	100%
NV105753462	Scotty	Direct Option	Active	100%
NV105753463	Scotty	Direct Option	Active	100%
NV105753464	Scotty	Direct Option	Active	100%
NV105753465	Scotty	Direct Option	Active	100%
NV105753466	Scotty	Direct Option	Active	100%
NV105753467	Scotty	Direct Option	Active	100%
NV105753468	Scotty	Direct Option	Active	100%
NV105753469	Scotty	Direct Option	Active	100%
NV105753470	Scotty	Direct Option	Active	100%
NV105753471	Scotty	Direct Option	Active	100%
NV105753472	Scotty	Direct Option	Active	100%
NV105753473	Scotty	Direct Option	Active	100%
NV105753474	Scotty	Direct Option	Active	100%
NV105753475	Scotty	Direct Option	Active	100%
NV105753476	Scotty	Direct Option	Active	100%
NV105753477	Scotty	Direct Option	Active	100%
NV105753478	Scotty	Direct Option	Active	100%
NV105753479	Scotty	Direct Option	Active	100%
NV105753480	Scotty	Direct Option	Active	100%
NV105753481	Scotty	Direct Option	Active	100%
NV105753482	Scotty	Direct Option	Active	100%
NV105753483	Scotty	Direct Option	Active	100%
NV105753484	Scotty	Direct Option	Active	100%
NV105753485	Scotty	Direct Option	Active	100%
NV105753486	Scotty	Direct Option	Active	100%
NV105753487	Scotty	Direct Option	Active	100%
NV105753488	Scotty	Direct Option	Active	100%
NV105753489	Scotty	Direct Option	Active	100%
NV105753490	Scotty	Direct Option	Active	100%
NV105753491	Scotty	Direct Option	Active	100%
NV105753492	Scotty	Direct Option	Active	100%
NV105753493	Scotty	Direct Option	Active	100%
NV105753494	Scotty	Direct Option	Active	100%
NV105753495	Scotty	Direct Option	Active	100%
NV105753496	Scotty	Direct Option	Active	100%
NV105753497	Scotty	Direct Option	Active	100%
NV105753498	Scotty	Direct Option	Active	100%
NV105753499	Scotty	Direct Option	Active	100%



NV105753500	Scotty	Direct Option	Active	100%
NV105753501	Scotty	Direct Option	Active	100%
NV105753502	Scotty	Direct Option	Active	100%
NV105753503	Scotty	Direct Option	Active	100%
NV105753504	Scotty	Direct Option	Active	100%
NV105753505	Scotty	Direct Option	Active	100%
NV105753506	Scotty	Direct Option	Active	100%
NV105753507	Scotty	Direct Option	Active	100%
NV105753508	Scotty	Direct Option	Active	100%
NV105753509	Scotty	Direct Option	Active	100%
NV105753510	Scotty	Direct Option	Active	100%
NV105753511	Scotty	Direct Option	Active	100%
NV105753512	Scotty	Direct Option	Active	100%
NV105753513	Scotty	Direct Option	Active	100%
NV105753514	Scotty	Direct Option	Active	100%
NV105753515	Scotty	Direct Option	Active	100%
NV105753516	Scotty	Direct Option	Active	100%
NV105753517	Scotty	Direct Option	Active	100%
NV105753518	Scotty	Direct Option	Active	100%
NV105753519	Scotty	Direct Option	Active	100%
NV105753520	Scotty	Direct Option	Active	100%
NV105753521	Scotty	Direct Option	Active	100%
NV105753522	Scotty	Direct Option	Active	100%
NV105753523	Scotty	Direct Option	Active	100%
NV105753524	Scotty	Direct Option	Active	100%
NV105753525	Scotty	Direct Option	Active	100%
NV105753526	Scotty	Direct Option	Active	100%
NV105753527	Scotty	Direct Option	Active	100%
NV105753528	Scotty	Direct Option	Active	100%
NV105753529	Scotty	Direct Option	Active	100%
NV105753530	Scotty	Direct Option	Active	100%
NV105753531	Scotty	Direct Option	Active	100%
NV105753532	Scotty	Direct Option	Active	100%
NV105753533	Scotty	Direct Option	Active	100%
NV105753534	Scotty	Direct Option	Active	100%
NV105753535	Scotty	Direct Option	Active	100%
NV105753536	Scotty	Direct Option	Active	100%
NV105753537	Scotty	Direct Option	Active	100%
NV105753538	Scotty	Direct Option	Active	100%
NV105753539	Scotty	Direct Option	Active	100%
NV105753540	Scotty	Direct Option	Active	100%
NV105753541	Scotty	Direct Option	Active	100%
NV105753542	Scotty	Direct Option	Active	100%
NV105753543	Scotty	Direct Option	Active	100%



NV105753544	Scotty	Direct Option	Active	100%
NV105753545	Scotty	Direct Option	Active	100%
NV105753546	Scotty	Direct Option	Active	100%
NV105753547	Scotty	Direct Option	Active	100%
NV105753548	Scotty	Direct Option	Active	100%
NV105753549	Scotty	Direct Option	Active	100%
NV105753550	Scotty	Direct Option	Active	100%
NV105753551	Scotty	Direct Option	Active	100%
NV105753552	Scotty	Direct Option	Active	100%
NV105753553	Scotty	Direct Option	Active	100%
NV105753554	Scotty	Direct Option	Active	100%
NV105753555	Scotty	Direct Option	Active	100%
NV105753556	Scotty	Direct Option	Active	100%
NV105753557	Scotty	Direct Option	Active	100%
NV105753558	Scotty	Direct Option	Active	100%
NV105753559	Scotty	Direct Option	Active	100%
NV105753560	Scotty	Direct Option	Active	100%
NV105753561	Scotty	Direct Option	Active	100%
NV105753562	Scotty	Direct Option	Active	100%
NV105753563	Scotty	Direct Option	Active	100%
NV105753564	Scotty	Direct Option	Active	100%
NV105753565	Scotty	Direct Option	Active	100%
NV105753566	Scotty	Direct Option	Active	100%
NV105753567	Scotty	Direct Option	Active	100%
NV105753568	Scotty	Direct Option	Active	100%
NV105753569	Scotty	Direct Option	Active	100%
NV105753570	Scotty	Direct Option	Active	100%
NV105753571	Scotty	Direct Option	Active	100%
NV105753572	Scotty	Direct Option	Active	100%
NV105753573	Scotty	Direct Option	Active	100%
NV105753574	Scotty	Direct Option	Active	100%
NV105753575	Scotty	Direct Option	Active	100%
NV105753576	Scotty	Direct Option	Active	100%
NV105753577	Scotty	Direct Option	Active	100%
NV105753578	Scotty	Direct Option	Active	100%
NV105753579	Scotty	Direct Option	Active	100%
NV105753580	Scotty	Direct Option	Active	100%
NV105753581	Scotty	Direct Option	Active	100%
NV105753582	Scotty	Direct Option	Active	100%
NV105753583	Scotty	Direct Option	Active	100%
NV105753584	Scotty	Direct Option	Active	100%
NV105753585	Scotty	Direct Option	Active	100%
NV105753586	Scotty	Direct Option	Active	100%
NV105753587	Scotty	Direct Option	Active	100%



NV105753588	Scotty	Direct Option	Active	100%
NV105753589	Scotty	Direct Option	Active	100%
NV105753590	Scotty	Direct Option	Active	100%
NV105753591	Scotty	Direct Option	Active	100%
NV105753592	Scotty	Direct Option	Active	100%
NV105753593	Scotty	Direct Option	Active	100%
NV105753594	Scotty	Direct Option	Active	100%
NV105753595	Scotty	Direct Option	Active	100%
NV105753596	Scotty	Direct Option	Active	100%
NV105753597	Scotty	Direct Option	Active	100%
NV105753598	Scotty	Direct Option	Active	100%
NV105753599	Scotty	Direct Option	Active	100%
NV105753600	Scotty	Direct Option	Active	100%
NV105753601	Scotty	Direct Option	Active	100%
NV105753602	Scotty	Direct Option	Active	100%
NV105753603	Scotty	Direct Option	Active	100%
NV105753604	Scotty	Direct Option	Active	100%
NV105753605	Scotty	Direct Option	Active	100%
NV105753606	Scotty	Direct Option	Active	100%
NV105753607	Scotty	Direct Option	Active	100%
NV105753608	Scotty	Direct Option	Active	100%
NV105753609	Scotty	Direct Option	Active	100%
NV105753610	Scotty	Direct Option	Active	100%
NV105753611	Scotty	Direct Option	Active	100%
NV105753612	Scotty	Direct Option	Active	100%
NV105753613	Scotty	Direct Option	Active	100%
NV105753614	Scotty	Direct Option	Active	100%
NV105753615	Scotty	Direct Option	Active	100%
NV105753616	Scotty	Direct Option	Active	100%
NV105753617	Scotty	Direct Option	Active	100%
NV105753618	Scotty	Direct Option	Active	100%
NV105753619	Scotty	Direct Option	Active	100%
NV105753620	Scotty	Direct Option	Active	100%
NV105753621	Scotty	Direct Option	Active	100%
NV105753622	Scotty	Direct Option	Active	100%
NV105753623	Scotty	Direct Option	Active	100%
NV105753624	Scotty	Direct Option	Active	100%
NV105753625	Scotty	Direct Option	Active	100%
NV105753626	Scotty	Direct Option	Active	100%
NV105753627	Scotty	Direct Option	Active	100%
NV105753628	Scotty	Direct Option	Active	100%
NV105753629	Scotty	Direct Option	Active	100%
NV105753630	Scotty	Direct Option	Active	100%
NV105753631	Scotty	Direct Option	Active	100%





NV105753632	Scotty	Direct Option	Active	100%
NV105753633	Scotty	Direct Option	Active	100%
NV105753634	Scotty	Direct Option	Active	100%
NV105753635	Scotty	Direct Option	Active	100%
NV105753636	Scotty	Direct Option	Active	100%
NV105753637	Scotty	Direct Option	Active	100%
NV105753638	Scotty	Direct Option	Active	100%
NV105753639	Scotty	Direct Option	Active	100%
NV105753640	Scotty	Direct Option	Active	100%
NV105753641	Scotty	Direct Option	Active	100%
NV105753642	Scotty	Direct Option	Active	100%
NV105753643	Scotty	Direct Option	Active	100%
NV105753644	Scotty	Direct Option	Active	100%
NV105753645	Scotty	Direct Option	Active	100%
NV105753646	Scotty	Direct Option	Active	100%
NV105753647	Scotty	Direct Option	Active	100%
NV105753648	Scotty	Direct Option	Active	100%
NV105753649	Scotty	Direct Option	Active	100%
NV105753650	Scotty	Direct Option	Active	100%
NV105753651	Scotty	Direct Option	Active	100%
NV105753652	Scotty	Direct Option	Active	100%
NV105753653	Scotty	Direct Option	Active	100%
NV105753654	Scotty	Direct Option	Active	100%
NV105753655	Scotty	Direct Option	Active	100%
NV105753656	Scotty	Direct Option	Active	100%
NV105753657	Scotty	Direct Option	Active	100%
NV105753658	Scotty	Direct Option	Active	100%
NV105753659	Scotty	Direct Option	Active	100%
NV105753660	Scotty	Direct Option	Active	100%
NV105753661	Scotty	Direct Option	Active	100%
NV105753662	Scotty	Direct Option	Active	100%
NV105753663	Scotty	Direct Option	Active	100%
NV105753664	Scotty	Direct Option	Active	100%
NV105753665	Scotty	Direct Option	Active	100%
NV105753666	Scotty	Direct Option	Active	100%
NV105753667	Scotty	Direct Option	Active	100%
NV105753668	Scotty	Direct Option	Active	100%
NV105753669	Scotty	Direct Option	Active	100%
NV105753670	Scotty	Direct Option	Active	100%
NV105753671	Scotty	Direct Option	Active	100%
NV105753672	Scotty	Direct Option	Active	100%
NV105753673	Scotty	Direct Option	Active	100%
NV105753674	Scotty	Direct Option	Active	100%
<b>Brisk</b>	<b>192</b>	<b>Claims</b>		



CDC2636348	Brisk	Direct	Active	100%
CDC2636349	Brisk	Direct	Active	100%
CDC2636350	Brisk	Direct	Active	100%
CDC2636351	Brisk	Direct	Active	100%
CDC2636352	Brisk	Direct	Active	100%
CDC2636353	Brisk	Direct	Active	100%
CDC2636354	Brisk	Direct	Active	100%
CDC2636355	Brisk	Direct	Active	100%
CDC2636356	Brisk	Direct	Active	100%
CDC2636357	Brisk	Direct	Active	100%
CDC2636358	Brisk	Direct	Active	100%
CDC2636359	Brisk	Direct	Active	100%
CDC2636360	Brisk	Direct	Active	100%
CDC2636361	Brisk	Direct	Active	100%
CDC2636362	Brisk	Direct	Active	100%
CDC2636363	Brisk	Direct	Active	100%
CDC2636364	Brisk	Direct	Active	100%
CDC2636365	Brisk	Direct	Active	100%
CDC2636366	Brisk	Direct	Active	100%
CDC2636367	Brisk	Direct	Active	100%
CDC2636368	Brisk	Direct	Active	100%
CDC2636369	Brisk	Direct	Active	100%
CDC2636370	Brisk	Direct	Active	100%
CDC2636371	Brisk	Direct	Active	100%
CDC2636372	Brisk	Direct	Active	100%
CDC2636373	Brisk	Direct	Active	100%
CDC2636374	Brisk	Direct	Active	100%
CDC2636375	Brisk	Direct	Active	100%
CDC2636376	Brisk	Direct	Active	100%
CDC2636377	Brisk	Direct	Active	100%
CDC2636378	Brisk	Direct	Active	100%
CDC2636379	Brisk	Direct	Active	100%
CDC2636380	Brisk	Direct	Active	100%
CDC2636381	Brisk	Direct	Active	100%
CDC2636382	Brisk	Direct	Active	100%
CDC2636383	Brisk	Direct	Active	100%
CDC2636384	Brisk	Direct	Active	100%
CDC2636385	Brisk	Direct	Active	100%
CDC2636386	Brisk	Direct	Active	100%
CDC2636387	Brisk	Direct	Active	100%
CDC2636388	Brisk	Direct	Active	100%
CDC2636389	Brisk	Direct	Active	100%
CDC2636390	Brisk	Direct	Active	100%
CDC2636391	Brisk	Direct	Active	100%



CDC2636392	Brisk	Direct	Active	100%
CDC2636393	Brisk	Direct	Active	100%
CDC2636394	Brisk	Direct	Active	100%
CDC2636395	Brisk	Direct	Active	100%
CDC2636396	Brisk	Direct	Active	100%
CDC2636397	Brisk	Direct	Active	100%
CDC2636398	Brisk	Direct	Active	100%
CDC2636399	Brisk	Direct	Active	100%
CDC2636400	Brisk	Direct	Active	100%
CDC2636401	Brisk	Direct	Active	100%
CDC2636402	Brisk	Direct	Active	100%
CDC2636403	Brisk	Direct	Active	100%
CDC2636404	Brisk	Direct	Active	100%
CDC2636405	Brisk	Direct	Active	100%
CDC2636406	Brisk	Direct	Active	100%
CDC2636407	Brisk	Direct	Active	100%
CDC2636408	Brisk	Direct	Active	100%
CDC2636409	Brisk	Direct	Active	100%
CDC2636410	Brisk	Direct	Active	100%
CDC2636411	Brisk	Direct	Active	100%
CDC2636412	Brisk	Direct	Active	100%
CDC2636413	Brisk	Direct	Active	100%
CDC2636414	Brisk	Direct	Active	100%
CDC2636415	Brisk	Direct	Active	100%
CDC2636416	Brisk	Direct	Active	100%
CDC2636417	Brisk	Direct	Active	100%
CDC2636418	Brisk	Direct	Active	100%
CDC2636419	Brisk	Direct	Active	100%
CDC2636420	Brisk	Direct	Active	100%
CDC2636421	Brisk	Direct	Active	100%
CDC2636422	Brisk	Direct	Active	100%
CDC2636423	Brisk	Direct	Active	100%
CDC2636424	Brisk	Direct	Active	100%
CDC2636425	Brisk	Direct	Active	100%
CDC2636426	Brisk	Direct	Active	100%
CDC2636427	Brisk	Direct	Active	100%
CDC2636428	Brisk	Direct	Active	100%
CDC2636429	Brisk	Direct	Active	100%
CDC2636430	Brisk	Direct	Active	100%
CDC2636431	Brisk	Direct	Active	100%
CDC2636432	Brisk	Direct	Active	100%
CDC2636433	Brisk	Direct	Active	100%
CDC2636434	Brisk	Direct	Active	100%
CDC2636435	Brisk	Direct	Active	100%



CDC2636436	Brisk	Direct	Active	100%
CDC2636437	Brisk	Direct	Active	100%
CDC2636438	Brisk	Direct	Active	100%
CDC2636439	Brisk	Direct	Active	100%
CDC2636440	Brisk	Direct	Active	100%
CDC2636441	Brisk	Direct	Active	100%
CDC2636442	Brisk	Direct	Active	100%
CDC2636443	Brisk	Direct	Active	100%
CDC2636444	Brisk	Direct	Active	100%
CDC2636445	Brisk	Direct	Active	100%
CDC2636446	Brisk	Direct	Active	100%
CDC2636447	Brisk	Direct	Active	100%
CDC2636448	Brisk	Direct	Active	100%
CDC2636449	Brisk	Direct	Active	100%
CDC2636450	Brisk	Direct	Active	100%
CDC2636451	Brisk	Direct	Active	100%
CDC2636452	Brisk	Direct	Active	100%
CDC2636453	Brisk	Direct	Active	100%
CDC2636454	Brisk	Direct	Active	100%
CDC2636455	Brisk	Direct	Active	100%
CDC2636456	Brisk	Direct	Active	100%
CDC2636457	Brisk	Direct	Active	100%
CDC2636458	Brisk	Direct	Active	100%
CDC2636459	Brisk	Direct	Active	100%
CDC2636460	Brisk	Direct	Active	100%
CDC2636461	Brisk	Direct	Active	100%
CDC2636462	Brisk	Direct	Active	100%
CDC2636463	Brisk	Direct	Active	100%
CDC2636464	Brisk	Direct	Active	100%
CDC2636465	Brisk	Direct	Active	100%
CDC2636466	Brisk	Direct	Active	100%
CDC2636467	Brisk	Direct	Active	100%
CDC2636468	Brisk	Direct	Active	100%
CDC2636469	Brisk	Direct	Active	100%
CDC2636470	Brisk	Direct	Active	100%
CDC2636471	Brisk	Direct	Active	100%
CDC2636472	Brisk	Direct	Active	100%
CDC2636473	Brisk	Direct	Active	100%
CDC2636474	Brisk	Direct	Active	100%
CDC2636475	Brisk	Direct	Active	100%
CDC2636476	Brisk	Direct	Active	100%
CDC2636477	Brisk	Direct	Active	100%
CDC2636478	Brisk	Direct	Active	100%
CDC2636479	Brisk	Direct	Active	100%



CDC2636480	Brisk	Direct	Active	100%
CDC2636481	Brisk	Direct	Active	100%
CDC2636482	Brisk	Direct	Active	100%
CDC2636483	Brisk	Direct	Active	100%
CDC2636484	Brisk	Direct	Active	100%
CDC2636485	Brisk	Direct	Active	100%
CDC2636486	Brisk	Direct	Active	100%
CDC2636487	Brisk	Direct	Active	100%
CDC2636488	Brisk	Direct	Active	100%
CDC2636489	Brisk	Direct	Active	100%
CDC2636490	Brisk	Direct	Active	100%
CDC2636491	Brisk	Direct	Active	100%
CDC2636492	Brisk	Direct	Active	100%
CDC2636493	Brisk	Direct	Active	100%
CDC2636494	Brisk	Direct	Active	100%
CDC2636495	Brisk	Direct	Active	100%
CDC2636496	Brisk	Direct	Active	100%
CDC2636497	Brisk	Direct	Active	100%
CDC2636498	Brisk	Direct	Active	100%
CDC2636499	Brisk	Direct	Active	100%
CDC2636500	Brisk	Direct	Active	100%
CDC2636501	Brisk	Direct	Active	100%
CDC2636502	Brisk	Direct	Active	100%
CDC2636503	Brisk	Direct	Active	100%
CDC2636504	Brisk	Direct	Active	100%
CDC2636505	Brisk	Direct	Active	100%
CDC2636506	Brisk	Direct	Active	100%
CDC2636507	Brisk	Direct	Active	100%
CDC2636508	Brisk	Direct	Active	100%
CDC2636509	Brisk	Direct	Active	100%
CDC2636510	Brisk	Direct	Active	100%
CDC2636511	Brisk	Direct	Active	100%
CDC2636512	Brisk	Direct	Active	100%
CDC2636513	Brisk	Direct	Active	100%
CDC2636514	Brisk	Direct	Active	100%
CDC2636515	Brisk	Direct	Active	100%
CDC2636516	Brisk	Direct	Active	100%
CDC2636517	Brisk	Direct	Active	100%
CDC2636518	Brisk	Direct	Active	100%
CDC2636519	Brisk	Direct	Active	100%
CDC2636520	Brisk	Direct	Active	100%
CDC2636521	Brisk	Direct	Active	100%
CDC2636522	Brisk	Direct	Active	100%
CDC2636523	Brisk	Direct	Active	100%



CDC2636524	Brisk	Direct	Active	100%
CDC2636525	Brisk	Direct	Active	100%
CDC2636526	Brisk	Direct	Active	100%
CDC2636527	Brisk	Direct	Active	100%
CDC2636528	Brisk	Direct	Active	100%
CDC2636529	Brisk	Direct	Active	100%
CDC2636530	Brisk	Direct	Active	100%
CDC2636531	Brisk	Direct	Active	100%
CDC2636532	Brisk	Direct	Active	100%
CDC2636533	Brisk	Direct	Active	100%
CDC2636534	Brisk	Direct	Active	100%
CDC2636535	Brisk	Direct	Active	100%
CDC2636536	Brisk	Direct	Active	100%
CDC2636537	Brisk	Direct	Active	100%
CDC2636538	Brisk	Direct	Active	100%
CDC2636539	Brisk	Direct	Active	100%
<b>Hidden Lake</b>	<b>6</b>	<b>Claims</b>		
HID-01	Hidden Lake	Direct	Active	60%
HID-02	Hidden Lake	Direct	Active	60%
HID-03	Hidden Lake	Direct	Active	60%
HID-04	Hidden Lake	Direct	Active	60%
HID-05	Hidden Lake	Direct	Active	60%
MON-01	Hidden Lake	Direct	Active	100%
<b>Western Australia</b>	<b>31</b>	<b>Claims</b>		
P26/4089	Monger North	Direct	Granted	80%
P26/4101	Monger North	Direct	Granted	80%
P26/4102	Monger North	Direct	Granted	80%
P26/4103	Monger North	Direct	Granted	80%
P26/4104	Monger North	Direct	Granted	80%
P26/4112	Monger North	Direct	Granted	80%
P26/4114	Monger North	Direct	Granted	80%
P26/4115	Monger North	Direct	Granted	80%
P26/4139	Monger North	Direct	Granted	80%
P26/4141	Monger North	Direct	Granted	80%
P26/4142	Monger North	Direct	Granted	80%
P26/4143	Monger North	Direct	Granted	80%
P26/4275	Monger North	Direct	Granted	80%
P26/4276	Monger North	Direct	Granted	80%
P26/4292	Monger North	Direct	Granted	80%
P26/4507	Monger North	Direct	Granted	80%
M26/867	Monger North	Direct	Application	80%
P25/2348	Monger South	Direct	Granted	80%
P25/2349	Monger South	Direct	Granted	80%
P25/2493	Monger South	Direct	Granted	80%



P26/4086	Monger South	Direct	Granted	80%
P26/4106	Monger South	Direct	Granted	80%
P26/4107	Monger South	Direct	Granted	80%
P26/4108	Monger South	Direct	Granted	80%
P26/4109	Monger South	Direct	Granted	80%
P26/4110	Monger South	Direct	Granted	80%
P26/4111	Monger South	Direct	Granted	80%
P26/4113	Monger South	Direct	Granted	80%
P26/4310	Monger South	Direct	Granted	80%
P26/4409	Monger South	Direct	Granted	80%
M15/1876	Gibraltar	Direct	Application	80%
<b>Trieste LLI</b>	<b>238</b>	<b>Claims</b>		
CDC2673137	Trieste	Direct	Active	100%
CDC2673138	Trieste	Direct	Active	100%
CDC2673139	Trieste	Direct	Active	100%
CDC2673140	Trieste	Direct	Active	100%
CDC2673141	Trieste	Direct	Active	100%
CDC2673142	Trieste	Direct	Active	100%
CDC2673143	Trieste	Direct	Active	100%
CDC2673144	Trieste	Direct	Active	100%
CDC2673145	Trieste	Direct	Active	100%
CDC2673146	Trieste	Direct	Active	100%
CDC2673147	Trieste	Direct	Active	100%
CDC2673148	Trieste	Direct	Active	100%
CDC2674064	Trieste	Direct	Active	100%
CDC2674065	Trieste	Direct	Active	100%
CDC2674066	Trieste	Direct	Active	100%
CDC2674067	Trieste	Direct	Active	100%
CDC2674068	Trieste	Direct	Active	100%
CDC2674069	Trieste	Direct	Active	100%
CDC2674070	Trieste	Direct	Active	100%
CDC2674071	Trieste	Direct	Active	100%
CDC2674072	Trieste	Direct	Active	100%
CDC2674073	Trieste	Direct	Active	100%
CDC2674074	Trieste	Direct	Active	100%
CDC2674075	Trieste	Direct	Active	100%
CDC2674076	Trieste	Direct	Active	100%
CDC2674077	Trieste	Direct	Active	100%
CDC2674078	Trieste	Direct	Active	100%
CDC2674079	Trieste	Direct	Active	100%
CDC2674080	Trieste	Direct	Active	100%
CDC2674081	Trieste	Direct	Active	100%
CDC2674082	Trieste	Direct	Active	100%
CDC2674083	Trieste	Direct	Active	100%



CDC2674084	Trieste	Direct	Active	100%
CDC2674085	Trieste	Direct	Active	100%
CDC2674086	Trieste	Direct	Active	100%
CDC2674087	Trieste	Direct	Active	100%
CDC2674088	Trieste	Direct	Active	100%
CDC2674089	Trieste	Direct	Active	100%
CDC2674090	Trieste	Direct	Active	100%
CDC2674091	Trieste	Direct	Active	100%
CDC2674092	Trieste	Direct	Active	100%
CDC2674093	Trieste	Direct	Active	100%
CDC2674094	Trieste	Direct	Active	100%
CDC2674095	Trieste	Direct	Active	100%
CDC2674096	Trieste	Direct	Active	100%
CDC2674097	Trieste	Direct	Active	100%
CDC2674098	Trieste	Direct	Active	100%
CDC2674099	Trieste	Direct	Active	100%
CDC2674100	Trieste	Direct	Active	100%
CDC2674101	Trieste	Direct	Active	100%
CDC2674102	Trieste	Direct	Active	100%
CDC2674103	Trieste	Direct	Active	100%
CDC2674104	Trieste	Direct	Active	100%
CDC2674105	Trieste	Direct	Active	100%
CDC2674106	Trieste	Direct	Active	100%
CDC2674107	Trieste	Direct	Active	100%
CDC2674108	Trieste	Direct	Active	100%
CDC2674109	Trieste	Direct	Active	100%
CDC2674110	Trieste	Direct	Active	100%
CDC2674111	Trieste	Direct	Active	100%
CDC2674112	Trieste	Direct	Active	100%
CDC2674113	Trieste	Direct	Active	100%
CDC2674114	Trieste	Direct	Active	100%
CDC2674115	Trieste	Direct	Active	100%
CDC2674116	Trieste	Direct	Active	100%
CDC2674117	Trieste	Direct	Active	100%
CDC2674118	Trieste	Direct	Active	100%
CDC2674119	Trieste	Direct	Active	100%
CDC2674120	Trieste	Direct	Active	100%
CDC2674121	Trieste	Direct	Active	100%
CDC2674122	Trieste	Direct	Active	100%
CDC2674123	Trieste	Direct	Active	100%
CDC2674124	Trieste	Direct	Active	100%
CDC2674125	Trieste	Direct	Active	100%
CDC2674126	Trieste	Direct	Active	100%
CDC2674127	Trieste	Direct	Active	100%





CDC2674128	Trieste	Direct	Active	100%
CDC2674129	Trieste	Direct	Active	100%
CDC2674130	Trieste	Direct	Active	100%
CDC2674131	Trieste	Direct	Active	100%
CDC2674132	Trieste	Direct	Active	100%
CDC2674133	Trieste	Direct	Active	100%
CDC2674134	Trieste	Direct	Active	100%
CDC2674135	Trieste	Direct	Active	100%
CDC2674136	Trieste	Direct	Active	100%
CDC2674137	Trieste	Direct	Active	100%
CDC2674138	Trieste	Direct	Active	100%
CDC2674139	Trieste	Direct	Active	100%
CDC2674140	Trieste	Direct	Active	100%
CDC2674141	Trieste	Direct	Active	100%
CDC2674142	Trieste	Direct	Active	100%
CDC2674143	Trieste	Direct	Active	100%
CDC2674144	Trieste	Direct	Active	100%
CDC2674145	Trieste	Direct	Active	100%
CDC2674146	Trieste	Direct	Active	100%
CDC2674147	Trieste	Direct	Active	100%
CDC2674148	Trieste	Direct	Active	100%
CDC2674149	Trieste	Direct	Active	100%
CDC2674150	Trieste	Direct	Active	100%
CDC2674151	Trieste	Direct	Active	100%
CDC2674152	Trieste	Direct	Active	100%
CDC2675919	Trieste	Direct	Active	100%
CDC2675920	Trieste	Direct	Active	100%
CDC2678822	Trieste	Direct	Active	100%
CDC2678823	Trieste	Direct	Active	100%
CDC2678824	Trieste	Direct	Active	100%
CDC2678825	Trieste	Direct	Active	100%
CDC2678826	Trieste	Direct	Active	100%
CDC2678827	Trieste	Direct	Active	100%
CDC2678828	Trieste	Direct	Active	100%
CDC2678829	Trieste	Direct	Active	100%
CDC2678830	Trieste	Direct	Active	100%
CDC2678831	Trieste	Direct	Active	100%
CDC2678832	Trieste	Direct	Active	100%
CDC2678833	Trieste	Direct	Active	100%
CDC2678834	Trieste	Direct	Active	100%
CDC2678835	Trieste	Direct	Active	100%
CDC2678836	Trieste	Direct	Active	100%
CDC2678837	Trieste	Direct	Active	100%
CDC2678838	Trieste	Direct	Active	100%



CDC2678839	Trieste	Direct	Active	100%
CDC2678840	Trieste	Direct	Active	100%
CDC2678841	Trieste	Direct	Active	100%
CDC2678842	Trieste	Direct	Active	100%
CDC2678843	Trieste	Direct	Active	100%
CDC2678844	Trieste	Direct	Active	100%
CDC2678845	Trieste	Direct	Active	100%
CDC2678846	Trieste	Direct	Active	100%
CDC2678847	Trieste	Direct	Active	100%
CDC2678848	Trieste	Direct	Active	100%
CDC2678849	Trieste	Direct	Active	100%
CDC2678850	Trieste	Direct	Active	100%
CDC2678851	Trieste	Direct	Active	100%
CDC2678852	Trieste	Direct	Active	100%
CDC2678853	Trieste	Direct	Active	100%
CDC2678854	Trieste	Direct	Active	100%
CDC2678855	Trieste	Direct	Active	100%
CDC2678856	Trieste	Direct	Active	100%
CDC2678857	Trieste	Direct	Active	100%
CDC2678858	Trieste	Direct	Active	100%
CDC2678859	Trieste	Direct	Active	100%
CDC2678860	Trieste	Direct	Active	100%
CDC2678861	Trieste	Direct	Active	100%
CDC2678862	Trieste	Direct	Active	100%
CDC2678863	Trieste	Direct	Active	100%
CDC2678864	Trieste	Direct	Active	100%
CDC2678865	Trieste	Direct	Active	100%
CDC2678866	Trieste	Direct	Active	100%
CDC2678867	Trieste	Direct	Active	100%
CDC2678868	Trieste	Direct	Active	100%
CDC2678869	Trieste	Direct	Active	100%
CDC2678870	Trieste	Direct	Active	100%
CDC2678871	Trieste	Direct	Active	100%
CDC2678872	Trieste	Direct	Active	100%
CDC2678873	Trieste	Direct	Active	100%
CDC2678874	Trieste	Direct	Active	100%
CDC2678875	Trieste	Direct	Active	100%
CDC2678876	Trieste	Direct	Active	100%
CDC2678877	Trieste	Direct	Active	100%
CDC2678878	Trieste	Direct	Active	100%
CDC2678879	Trieste	Direct	Active	100%
CDC2678880	Trieste	Direct	Active	100%
CDC2678881	Trieste	Direct	Active	100%
CDC2678882	Trieste	Direct	Active	100%



CDC2678883	Trieste	Direct	Active	100%
CDC2678884	Trieste	Direct	Active	100%
CDC2678885	Trieste	Direct	Active	100%
CDC2678886	Trieste	Direct	Active	100%
CDC2678887	Trieste	Direct	Active	100%
CDC2678888	Trieste	Direct	Active	100%
CDC2678889	Trieste	Direct	Active	100%
CDC2678890	Trieste	Direct	Active	100%
CDC2678891	Trieste	Direct	Active	100%
CDC2678892	Trieste	Direct	Active	100%
CDC2678893	Trieste	Direct	Active	100%
CDC2678894	Trieste	Direct	Active	100%
CDC2678895	Trieste	Direct	Active	100%
CDC2678896	Trieste	Direct	Active	100%
CDC2678897	Trieste	Direct	Active	100%
CDC2678898	Trieste	Direct	Active	100%
CDC2678899	Trieste	Direct	Active	100%
CDC2678900	Trieste	Direct	Active	100%
CDC2678901	Trieste	Direct	Active	100%
CDC2678902	Trieste	Direct	Active	100%
CDC2678903	Trieste	Direct	Active	100%
CDC2678904	Trieste	Direct	Active	100%
CDC2679820	Trieste	Direct	Active	100%
CDC2679821	Trieste	Direct	Active	100%
CDC2679822	Trieste	Direct	Active	100%
CDC2679823	Trieste	Direct	Active	100%
CDC2679824	Trieste	Direct	Active	100%
CDC2679825	Trieste	Direct	Active	100%
CDC2679826	Trieste	Direct	Active	100%
CDC2679827	Trieste	Direct	Active	100%
CDC2679828	Trieste	Direct	Active	100%
CDC2680527	Trieste	Direct	Active	100%
CDC2680528	Trieste	Direct	Active	100%
CDC2680529	Trieste	Direct	Active	100%
CDC2680530	Trieste	Direct	Active	100%
CDC2680531	Trieste	Direct	Active	100%
CDC2680532	Trieste	Direct	Active	100%
CDC2680533	Trieste	Direct	Active	100%
CDC2680534	Trieste	Direct	Active	100%
CDC2680535	Trieste	Direct	Active	100%
CDC2680536	Trieste	Direct	Active	100%
CDC2680537	Trieste	Direct	Active	100%
CDC2680538	Trieste	Direct	Active	100%
CDC2680539	Trieste	Direct	Active	100%



CDC2680540	Trieste	Direct	Active	100%
CDC2680541	Trieste	Direct	Active	100%
CDC2680542	Trieste	Direct	Active	100%
CDC2680543	Trieste	Direct	Active	100%
CDC2680544	Trieste	Direct	Active	100%
CDC2680545	Trieste	Direct	Active	100%
CDC2680546	Trieste	Direct	Active	100%
CDC2680547	Trieste	Direct	Active	100%
CDC2680548	Trieste	Direct	Active	100%
CDC2680549	Trieste	Direct	Active	100%
CDC2680550	Trieste	Direct	Active	100%
CDC2680551	Trieste	Direct	Active	100%
CDC2680552	Trieste	Direct	Active	100%
CDC2680553	Trieste	Direct	Active	100%
CDC2680554	Trieste	Direct	Active	100%
CDC2680555	Trieste	Direct	Active	100%
CDC2680556	Trieste	Direct	Active	100%
CDC2680557	Trieste	Direct	Active	100%
CDC2680558	Trieste	Direct	Active	100%
CDC2680559	Trieste	Direct	Active	100%
CDC2680560	Trieste	Direct	Active	100%
CDC2680561	Trieste	Direct	Active	100%
CDC2680562	Trieste	Direct	Active	100%
CDC2680563	Trieste	Direct	Active	100%
CDC2680564	Trieste	Direct	Active	100%
CDC2680565	Trieste	Direct	Active	100%
CDC2680566	Trieste	Direct	Active	100%
CDC2680567	Trieste	Direct	Active	100%
CDC2680568	Trieste	Direct	Active	100%
CDC2680569	Trieste	Direct	Active	100%
<b>Trieste LLI Osisko</b>	<b>228</b>	<b>Claims</b>		
CDC2054397	Trieste	Direct	Active	75%
CDC2054398	Trieste	Direct	Active	75%
CDC2054399	Trieste	Direct	Active	75%
CDC2054400	Trieste	Direct	Active	75%
CDC2054401	Trieste	Direct	Active	75%
CDC2054402	Trieste	Direct	Active	75%
CDC2054403	Trieste	Direct	Active	75%
CDC2054404	Trieste	Direct	Active	75%
CDC2054405	Trieste	Direct	Active	75%
CDC2054406	Trieste	Direct	Active	75%
CDC2054407	Trieste	Direct	Active	75%
CDC2054408	Trieste	Direct	Active	75%
CDC2054409	Trieste	Direct	Active	75%



CDC2054420	Trieste	Direct	Active	75%
CDC2054421	Trieste	Direct	Active	75%
CDC2054422	Trieste	Direct	Active	75%
CDC2054423	Trieste	Direct	Active	75%
CDC2054424	Trieste	Direct	Active	75%
CDC2054425	Trieste	Direct	Active	75%
CDC2054426	Trieste	Direct	Active	75%
CDC2054427	Trieste	Direct	Active	75%
CDC2054428	Trieste	Direct	Active	75%
CDC2054429	Trieste	Direct	Active	75%
CDC2054430	Trieste	Direct	Active	75%
CDC2054431	Trieste	Direct	Active	75%
CDC2054432	Trieste	Direct	Active	75%
CDC2054440	Trieste	Direct	Active	75%
CDC2054441	Trieste	Direct	Active	75%
CDC2054442	Trieste	Direct	Active	75%
CDC2054443	Trieste	Direct	Active	75%
CDC2054444	Trieste	Direct	Active	75%
CDC2054445	Trieste	Direct	Active	75%
CDC2054446	Trieste	Direct	Active	75%
CDC2054447	Trieste	Direct	Active	75%
CDC2054448	Trieste	Direct	Active	75%
CDC2054449	Trieste	Direct	Active	75%
CDC2054450	Trieste	Direct	Active	75%
CDC2054451	Trieste	Direct	Active	75%
CDC2054452	Trieste	Direct	Active	75%
CDC2054453	Trieste	Direct	Active	75%
CDC2054454	Trieste	Direct	Active	75%
CDC2054455	Trieste	Direct	Active	75%
CDC2054463	Trieste	Direct	Active	75%
CDC2054464	Trieste	Direct	Active	75%
CDC2054465	Trieste	Direct	Active	75%
CDC2054466	Trieste	Direct	Active	75%
CDC2054467	Trieste	Direct	Active	75%
CDC2054468	Trieste	Direct	Active	75%
CDC2054469	Trieste	Direct	Active	75%
CDC2054470	Trieste	Direct	Active	75%
CDC2054471	Trieste	Direct	Active	75%
CDC2054472	Trieste	Direct	Active	75%
CDC2054473	Trieste	Direct	Active	75%
CDC2054474	Trieste	Direct	Active	75%
CDC2054475	Trieste	Direct	Active	75%
CDC2054476	Trieste	Direct	Active	75%
CDC2054477	Trieste	Direct	Active	75%



CDC2054478	Trieste	Direct	Active	75%
CDC2054486	Trieste	Direct	Active	75%
CDC2054487	Trieste	Direct	Active	75%
CDC2054488	Trieste	Direct	Active	75%
CDC2054489	Trieste	Direct	Active	75%
CDC2054490	Trieste	Direct	Active	75%
CDC2054491	Trieste	Direct	Active	75%
CDC2054492	Trieste	Direct	Active	75%
CDC2054493	Trieste	Direct	Active	75%
CDC2054494	Trieste	Direct	Active	75%
CDC2054495	Trieste	Direct	Active	75%
CDC2054509	Trieste	Direct	Active	75%
CDC2054510	Trieste	Direct	Active	75%
CDC2054511	Trieste	Direct	Active	75%
CDC2054512	Trieste	Direct	Active	75%
CDC2054513	Trieste	Direct	Active	75%
CDC2054514	Trieste	Direct	Active	75%
CDC2054515	Trieste	Direct	Active	75%
CDC2054516	Trieste	Direct	Active	75%
CDC2054517	Trieste	Direct	Active	75%
CDC2054518	Trieste	Direct	Active	75%
CDC2054521	Trieste	Direct	Active	75%
CDC2054522	Trieste	Direct	Active	75%
CDC2054523	Trieste	Direct	Active	75%
CDC61840	Trieste	Direct	Active	75%
CDC61841	Trieste	Direct	Active	75%
CDC61842	Trieste	Direct	Active	75%
CDC61843	Trieste	Direct	Active	75%
CDC61844	Trieste	Direct	Active	75%
CDC61845	Trieste	Direct	Active	75%
CDC61846	Trieste	Direct	Active	75%
CDC61847	Trieste	Direct	Active	75%
CDC61848	Trieste	Direct	Active	75%
CDC61849	Trieste	Direct	Active	75%
CDC61850	Trieste	Direct	Active	75%
CDC61851	Trieste	Direct	Active	75%
CDC61852	Trieste	Direct	Active	75%
CDC61853	Trieste	Direct	Active	75%
CDC61854	Trieste	Direct	Active	75%
CDC61855	Trieste	Direct	Active	75%
CDC61856	Trieste	Direct	Active	75%
CDC61857	Trieste	Direct	Active	75%
CDC61858	Trieste	Direct	Active	75%
CDC61859	Trieste	Direct	Active	75%



CDC61862	Trieste	Direct	Active	75%
CDC61863	Trieste	Direct	Active	75%
CDC61864	Trieste	Direct	Active	75%
CDC61865	Trieste	Direct	Active	75%
CDC61866	Trieste	Direct	Active	75%
CDC61868	Trieste	Direct	Active	75%
CDC61869	Trieste	Direct	Active	75%
CDC61870	Trieste	Direct	Active	75%
CDC61872	Trieste	Direct	Active	75%
CDC61873	Trieste	Direct	Active	75%
CDC61874	Trieste	Direct	Active	75%
CDC61875	Trieste	Direct	Active	75%
CDC61876	Trieste	Direct	Active	75%
CDC61877	Trieste	Direct	Active	75%
CDC61879	Trieste	Direct	Active	75%
CDC61880	Trieste	Direct	Active	75%
CDC61881	Trieste	Direct	Active	75%
CDC61884	Trieste	Direct	Active	75%
CDC61885	Trieste	Direct	Active	75%
CDC61886	Trieste	Direct	Active	75%
CDC61887	Trieste	Direct	Active	75%
CDC61888	Trieste	Direct	Active	75%
CDC61889	Trieste	Direct	Active	75%
CDC61891	Trieste	Direct	Active	75%
CDC61892	Trieste	Direct	Active	75%
CDC2085732	Trieste	Direct	Active	75%
CDC2085733	Trieste	Direct	Active	75%
CDC2085734	Trieste	Direct	Active	75%
CDC2085735	Trieste	Direct	Active	75%
CDC2085736	Trieste	Direct	Active	75%
CDC2085737	Trieste	Direct	Active	75%
CDC2085739	Trieste	Direct	Active	75%
CDC2085740	Trieste	Direct	Active	75%
CDC2085741	Trieste	Direct	Active	75%
CDC2085742	Trieste	Direct	Active	75%
CDC2085743	Trieste	Direct	Active	75%
CDC2085744	Trieste	Direct	Active	75%
CDC2085746	Trieste	Direct	Active	75%
CDC2085747	Trieste	Direct	Active	75%
CDC2085748	Trieste	Direct	Active	75%
CDC2085749	Trieste	Direct	Active	75%
CDC2085750	Trieste	Direct	Active	75%
CDC2085751	Trieste	Direct	Active	75%
CDC2085753	Trieste	Direct	Active	75%



CDC2085754	Trieste	Direct	Active	75%
CDC2085755	Trieste	Direct	Active	75%
CDC2085756	Trieste	Direct	Active	75%
CDC2085757	Trieste	Direct	Active	75%
CDC2145028	Trieste	Direct	Active	75%
CDC2145029	Trieste	Direct	Active	75%
CDC2145041	Trieste	Direct	Active	75%
CDC2145042	Trieste	Direct	Active	75%
CDC2145060	Trieste	Direct	Active	75%
CDC2145061	Trieste	Direct	Active	75%
CDC2145062	Trieste	Direct	Active	75%
CDC2145063	Trieste	Direct	Active	75%
CDC2145065	Trieste	Direct	Active	75%
CDC2145066	Trieste	Direct	Active	75%
CDC2145067	Trieste	Direct	Active	75%
CDC2144976	Trieste	Direct	Active	75%
CDC2144977	Trieste	Direct	Active	75%
CDC2144978	Trieste	Direct	Active	75%
CDC2144979	Trieste	Direct	Active	75%
CDC2144980	Trieste	Direct	Active	75%
CDC2144981	Trieste	Direct	Active	75%
CDC2144982	Trieste	Direct	Active	75%
CDC2144983	Trieste	Direct	Active	75%
CDC2144984	Trieste	Direct	Active	75%
CDC2144985	Trieste	Direct	Active	75%
CDC2144986	Trieste	Direct	Active	75%
CDC2144987	Trieste	Direct	Active	75%
CDC2144988	Trieste	Direct	Active	75%
CDC2144989	Trieste	Direct	Active	75%
CDC2144990	Trieste	Direct	Active	75%
CDC2144991	Trieste	Direct	Active	75%
CDC2144992	Trieste	Direct	Active	75%
CDC2144993	Trieste	Direct	Active	75%
CDC2144994	Trieste	Direct	Active	75%
CDC2144995	Trieste	Direct	Active	75%
CDC2144996	Trieste	Direct	Active	75%
CDC2144997	Trieste	Direct	Active	75%
CDC2144998	Trieste	Direct	Active	75%
CDC2144999	Trieste	Direct	Active	75%
CDC2145000	Trieste	Direct	Active	75%
CDC2145001	Trieste	Direct	Active	75%
CDC2145002	Trieste	Direct	Active	75%
CDC2145003	Trieste	Direct	Active	75%
CDC2145004	Trieste	Direct	Active	75%





CDC2145005	Trieste	Direct	Active	75%
CDC2145006	Trieste	Direct	Active	75%
CDC2145007	Trieste	Direct	Active	75%
CDC2145008	Trieste	Direct	Active	75%
CDC2145009	Trieste	Direct	Active	75%
CDC2145010	Trieste	Direct	Active	75%
CDC2145011	Trieste	Direct	Active	75%
CDC2145012	Trieste	Direct	Active	75%
CDC2145013	Trieste	Direct	Active	75%
CDC2145014	Trieste	Direct	Active	75%
CDC2145015	Trieste	Direct	Active	75%
CDC2145016	Trieste	Direct	Active	75%
CDC2145017	Trieste	Direct	Active	75%
CDC2145018	Trieste	Direct	Active	75%
CDC2145019	Trieste	Direct	Active	75%
CDC2145020	Trieste	Direct	Active	75%
CDC2145021	Trieste	Direct	Active	75%
CDC2145022	Trieste	Direct	Active	75%
CDC2145023	Trieste	Direct	Active	75%
CDC2145024	Trieste	Direct	Active	75%
CDC2145025	Trieste	Direct	Active	75%
CDC2145026	Trieste	Direct	Active	75%
CDC2145027	Trieste	Direct	Active	75%
CDC2145032	Trieste	Direct	Active	75%
CDC2145033	Trieste	Direct	Active	75%
CDC2145034	Trieste	Direct	Active	75%
CDC2145035	Trieste	Direct	Active	75%
CDC2145036	Trieste	Direct	Active	75%
CDC2145043	Trieste	Direct	Active	75%
CDC2145044	Trieste	Direct	Active	75%
CDC2145045	Trieste	Direct	Active	75%
CDC2145046	Trieste	Direct	Active	75%
CDC2145047	Trieste	Direct	Active	75%
CDC2145048	Trieste	Direct	Active	75%
CDC2145049	Trieste	Direct	Active	75%
CDC2145050	Trieste	Direct	Active	75%
CDC2145051	Trieste	Direct	Active	75%
CDC2145052	Trieste	Direct	Active	75%
CDC2145064	Trieste	Direct	Active	75%

## Appendix 5B

### Mining exploration entity or oil and gas exploration entity quarterly cash flow report

Name of entity

<b>Loyal Lithium Limited (ASX: LLI)</b>
---

ABN

20 644 564 241
----------------

Quarter ended ("current quarter")

<b>31 March 2024</b>
----------------------

<b>Consolidated statement of cash flows</b>	<b>Current quarter \$A'000</b>	<b>Year to date (3 months) \$A'000</b>
<b>1. Cash flows from operating activities</b>		
1.1 Receipts from customers	0	0
1.2 Payments for		
(a) exploration & evaluation	(2,424)	(2,424)
(b) development		
(c) production		
(d) staff costs	(117)	(117)
(e) administration and corporate costs	(196)	(196)
1.3 Dividends received (see note 3)		
1.4 Interest received	91	91
1.5 Interest and other costs of finance paid		
1.6 Income taxes paid		
1.7 Government grants and tax incentives		
1.8 Other (provide details if material)		
(a) GST & Payroll tax	(15)	(15)
<b>1.9 Net cash from / (used in) operating activities</b>	<b>(2,661)</b>	<b>(2,661)</b>
<b>2. Cash flows from investing activities</b>		
2.1 Payments to acquire or for:		
(a) Entities		
(b) Tenements	(127)	(127)
(c) property, plant and equipment		
(d) exploration & evaluation	(30)	(30)
(e) investments		
(f) other non-current assets		

## Mining exploration entity or oil and gas exploration entity quarterly cash flow report

Consolidated statement of cash flows		Current quarter \$A'000	Year to date (3 months) \$A'000
2.2	Proceeds from the disposal of:		
	(a) entities		
	(b) tenements		
	(c) property, plant and equipment		
	(d) investments		
	(e) other non-current assets		
2.3	Cash flows from loans to other entities		
2.4	Dividends received (see note 3)		
2.5	Other (provide details if material)		
<b>2.6</b>	<b>Net cash from / (used in) investing activities</b>	<b>(157)</b>	<b>(157)</b>
<b>3.</b>	<b>Cash flows from financing activities</b>		
3.1	Proceeds from issues of equity securities (excluding convertible debt securities)		
3.2	Proceeds from issue of convertible debt securities		
3.3	Proceeds from exercise of options		
3.4	Transaction costs related to issues of equity securities or convertible debt securities	(68)	(68)
3.5	Proceeds from borrowings		
3.6	Repayment of borrowings		
3.7	Transaction costs related to loans and borrowings		
3.8	Dividends paid		
3.9	Other (provide details if material)		
<b>3.10</b>	<b>Net cash from / (used in) financing activities</b>	<b>(68)</b>	<b>(68)</b>
<i>* Excluding the funds from the re-compliance Capital Raise.</i>			
<b>4.</b>	<b>Net increase / (decrease) in cash and cash equivalents for the period</b>		
4.1	Cash and cash equivalents at beginning of period	6,404	6,404
4.2	Net cash from / (used in) operating activities (item 1.9 above)	(2,661)	(2,661)
4.3	Net cash from / (used in) investing activities (item 2.6 above)	(157)	(157)
4.4	Net cash from / (used in) financing activities (item 3.10 above)	(68)	(68)

## Mining exploration entity or oil and gas exploration entity quarterly cash flow report

<b>Consolidated statement of cash flows</b>		<b>Current quarter \$A'000</b>	<b>Year to date (3 months) \$A'000</b>
4.5	Effect of movement in exchange rates on cash held	(8)	(8)
<b>4.6</b>	<b>Cash and cash equivalents at end of period</b>	<b>3,510</b>	<b>3,510</b>

<b>5.</b>	<b>Reconciliation of cash and cash equivalents</b> at the end of the quarter (as shown in the consolidated statement of cash flows) to the related items in the accounts	<b>Current quarter \$A'000</b>	<b>Previous quarter \$A'000</b>
5.1	Bank balances	3,510	3,510
5.2	Call deposits		
5.3	Bank overdrafts		
5.4	Other (provide details)		
<b>5.5</b>	<b>Cash and cash equivalents at end of quarter (should equal item 4.6 above)</b>	<b>3,510</b>	<b>3,510</b>

<b>6.</b>	<b>Payments to related parties of the entity and their associates</b>	<b>Current quarter \$A'000</b>
6.1	Aggregate amount of payments to related parties and their associates included in item 1	49
6.2	Aggregate amount of payments to related parties and their associates included in item 2	-
<i>Note: if any amounts are shown in items 6.1 or 6.2, your quarterly activity report must include a description of, and an explanation for, such payments.</i>		

<b>7.</b>	<b>Financing facilities</b> <i>Note: the term "facility" includes all forms of financing arrangements available to the entity. Add notes as necessary for an understanding of the sources of finance available to the entity.</i>	<b>Total facility amount at quarter end \$A'000</b>	<b>Amount drawn at quarter end \$A'000</b>
7.1	Loan facilities		
7.2	Credit standby arrangements		
7.3	Other (please specify)		
7.4	<b>Total financing facilities</b>		
7.5	<b>Unused financing facilities available at quarter end</b>		
7.6	Include in the box below a description of each facility above, including the lender, interest rate, maturity date and whether it is secured or unsecured. If any additional financing facilities have been entered into or are proposed to be entered into after quarter end, include a note providing details of those facilities as well.		

## Mining exploration entity or oil and gas exploration entity quarterly cash flow report

<b>8.</b>	<b>Estimated cash available for future operating activities</b>	<b>\$A'000</b>
8.1	Net cash from / (used in) operating activities (item 1.9)	(2,661)
8.2	(Payments for exploration & evaluation classified as investing activities) (item 2.1(d))	(157)
8.3	Total relevant outgoings (item 8.1 + item 8.2)	(2,818)
8.4	Cash and cash equivalents at quarter end (item 4.6)	3,510
8.5	Unused finance facilities available at quarter end (item 7.5)	-
8.6	Total available funding (item 8.4 + item 8.5)	3,510
8.7	<b>Estimated quarters of funding available (item 8.6 divided by item 8.3)</b>	1.25
	<i>Note: if the entity has reported positive relevant outgoings (ie a net cash inflow) in item 8.3, answer item 8.7 as "N/A". Otherwise, a figure for the estimated quarters of funding available must be included in item 8.7.</i>	
8.8	If item 8.7 is less than 2 quarters, please provide answers to the following questions:	
8.8.1	Does the entity expect that it will continue to have the current level of net operating cash flows for the time being and, if not, why not?	
	<p>Answer:</p> <p>No, a lower level of net operating cash flow is expected due to lower cost exploration works the next two quarters.</p>	
8.8.2	Has the entity taken any steps, or does it propose to take any steps, to raise further cash to fund its operations and, if so, what are those steps and how likely does it believe that they will be successful?	
	<p>Answer:</p> <p>Yes, as an exploration company, we rely on external funding, including the Canadian Flow-Through funding, as such we are always prepared to raise capital when required. Additionally, it's important to note that the Company anticipates receiving over A\$1.5 million in Sales Tax refunds and Quebec Mining Tax credits in the second half of 2024.</p>	
8.8.3	Does the entity expect to be able to continue its operations and to meet its business objectives and, if so, on what basis?	
	<p>Answer:</p> <p>Yes, the Company has always been successful in raisings capital when required.</p>	
	<i>Note: where item 8.7 is less than 2 quarters, all of questions 8.8.1, 8.8.2 and 8.8.3 above must be answered.</i>	

## Compliance statement

- 1 This statement has been prepared in accordance with accounting standards and policies which comply with Listing Rule 19.11A.
- 2 This statement gives a true and fair view of the matters disclosed.

Date: ..... 30 April 2024.....

Authorised by: .....**Board of Directors**.....  
(Name of body or officer authorising release – see note 4)

## Notes

1. This quarterly cash flow report and the accompanying activity report provide a basis for informing the market about the entity's activities for the past quarter, how they have been financed and the effect this has had on its cash position. An entity that wishes to disclose additional information over and above the minimum required under the Listing Rules is encouraged to do so.
2. If this quarterly cash flow report has been prepared in accordance with Australian Accounting Standards, the definitions in, and provisions of, *AASB 6: Exploration for and Evaluation of Mineral Resources* and *AASB 107: Statement of Cash Flows* apply to this report. If this quarterly cash flow report has been prepared in accordance with other accounting standards agreed by ASX pursuant to Listing Rule 19.11A, the corresponding equivalent standards apply to this report.
3. Dividends received may be classified either as cash flows from operating activities or cash flows from investing activities, depending on the accounting policy of the entity.
4. If this report has been authorised for release to the market by your board of directors, you can insert here: "By the board". If it has been authorised for release to the market by a committee of your board of directors, you can insert here: "By the [name of board committee – eg Audit and Risk Committee]". If it has been authorised for release to the market by a disclosure committee, you can insert here: "By the Disclosure Committee".
5. If this report has been authorised for release to the market by your board of directors and you wish to hold yourself out as complying with recommendation 4.2 of the ASX Corporate Governance Council's *Corporate Governance Principles and Recommendations*, the board should have received a declaration from its CEO and CFO that, in their opinion, the financial records of the entity have been properly maintained, that this report complies with the appropriate accounting standards and gives a true and fair view of the cash flows of the entity, and that their opinion has been formed on the basis of a sound system of risk management and internal control which is operating effectively.

### Quarterly Report Disclosure – 31 March 2024

Loyal Lithium Limited (ASX: **LLI**) provides the following disclosure required by ASX Listing Rule 5.3.4 regarding a comparison of its actual expenditure to date since re-listing on 2 August 2023 against the 'Use of Funds' statement in its Re-compliance Prospectus dated 5 June 2023 (Section 3.9) and Supplementary Prospectus dated 27 July 2023 (Section 3.7) ("**Prospectus**").

Use of Funds Description	Use of Funds (Sec 3.7 of the Supplementary Prospectus)	Proposed Use of Funds Year 1	Use of Funds Sep 2023 Qtr	Use of Funds Dec 2023 Qtr	Use of Funds Mar 2024 Qtr	Use of Funds Total to Date	Variance Year 1	Notes
Existing cash reserves	\$4,891,648							
Funds raised from the Public Offer	\$1,500,000		\$1,500,000	\$0	\$0	\$1,500,000		
Share Placements & Exercise of Options <sup>2</sup>			\$6,729,335	\$0	\$0	\$6,729,335		
<b>Total</b>	<b>\$6,391,648</b>		<b>\$8,229,335</b>	<b>\$0</b>	<b>\$0</b>	<b>\$8,229,335</b>		
<b>Allocation of funds</b>								
Expenditure on Initial Lithium Projects <sup>1 6</sup>	\$1,004,999	1,004,999	\$717,755	\$2,361,622	\$2,212,544	\$5,291,921	\$4,286,922	Over Budget <sup>6</sup>
Expenditure on the Hidden Lake Project <sup>1</sup>	\$1,880,952	1,447,352	\$657,968	\$95,916	\$211,479	\$965,363	(\$481,989)	Under Budget
Payment of environmental bond	\$140,588	\$140,588	\$0	\$0	\$0	\$0	(\$140,588)	Under Budget
Expenses of the Public Offer (net of recoverable GST) <sup>4</sup>	\$694,410	\$694,410	\$547,706	\$107,587	\$68,332	\$723,625	\$29,215	Over Budget <sup>4</sup>
Acquisition cash payments <sup>5</sup>	\$38,500	\$38,500	\$39,708	\$344,048	\$126,513	\$510,269	\$471,769	Over Budget <sup>5</sup>
Additional project evaluation/acquisitions	\$250,000	\$125,000	\$60,000	\$60,000	\$30,000	\$150,000	\$25,000	Over Budget
Working capital <sup>3</sup>	\$2,132,199	\$1,500,000	\$399,463	\$348,864	\$335,755	\$1,084,082	(\$415,918)	Under Budget
<b>TOTAL</b>	<b>\$6,141,648</b>	<b>\$4,950,849</b>	<b>\$2,422,600</b>	<b>\$3,318,037</b>	<b>\$2,984,623</b>	<b>\$8,725,260</b>		

Based on exploration undertaken post the listing of the Company on ASX, the Company has previously announced to ASX its decision to investigate the potential divestment or joint venture of the Monger North, Monger South and Gibraltar Projects. Consequently, other than in order to maintain those projects in good standing pending any such divestment or joint venture decision, the Company will not be incurring further exploration expenditure on those projects. For further information please see the ASX release "Operations Update" dated 26 August 2022, and ASX release "Western Australian Operations Update" dated 10 November 2022.