



US ROADSHOW, MAY 2024

**GROWING THE
TABBA TABBA
LITHIUM DISCOVERY IN
WESTERN AUSTRALIA**



Disclaimer



This presentation has been prepared by Wildcat Resources Ltd (WC8 or the Company). It contains general information about the Company's activities current as at the date of the presentation. The information is provided in summary form and does not purport to be complete. This presentation is not to be distributed (nor taken to have been distributed) to any persons in any jurisdictions to whom an offer or solicitation to buy shares in the Company would be unlawful. Any recipient of the presentation warrants to the Company that the receipt of the presentation is not unlawful. It should not be considered as an offer or invitation to subscribe for or purchase any securities in the Company or as an inducement to make an offer or invitation with respect to those securities. No agreement to subscribe for securities in the Company will be entered into on the basis of this presentation or any information, opinions or conclusions expressed in the course of this presentation.

This presentation is not a prospectus, product disclosure document or other offering document under Australian law or under any other law. It has been prepared for information purposes only. This presentation contains general summary information and does not take into account the investment objectives, financial situation and particular needs of any individual investor. It is not financial product advice and investors should undertake their own due diligence and obtain their own independent advice from qualified professional advisors having regard to their objectives, financial situation and needs. Neither WC8 nor any of its related bodies corporate is licensed to provide financial product advice.

This presentation and information, opinions or conclusions expressed in the course of this presentation contains forecasts, projections and opinions which constitute forward looking statements. Forward looking statements include, but are not limited to, statements concerning the Company's exploration programme, outlook and target sizes. They include statements qualified by words such as "potential", "target", "scheduled", "planned", "estimate", "possible", "future", "prospective" and similar expressions. Such forward looking statements are not a guarantee of future performance, and are subject to numerous risks, uncertainties and other factors, including unknown ones. Actual results and developments will almost certainly differ materially from those expressed or implied. There are a number of risks, both specific to WC8 and of a general nature which may affect the future operating and financial performance of WC8 and the value of an investment in WC8 including but not limited to title risk, renewal risk, economic and general market conditions, stock market fluctuations, price movements, regulatory risks, operational risks, reliance on key personnel, uncertainties relating to interpretation of exploration results, geology and resource estimations, native title risks, foreign currency fluctuations, uncertainties relating to the availability of/access to additional capital, infrastructure or environmental approvals, and mining development, construction and commissioning risk. WC8 expressly disclaims any intention or obligation to update or revise any forward looking statements whether as a result of new information, future events, or otherwise.

To the maximum extent permitted by law, no representation, warranty or undertaking, express or implied, is made and no responsibility or liability is accepted, by the Company or any of its officers, employees, agents or consultants or any other person, as to the adequacy, accuracy, completeness or reasonableness of the information in this presentation. An investment in the shares of the Company is to be considered highly speculative.

The exploration targets or conceptual exploration targets in this presentation or expressed during the course of this presentation are subject to completion of the necessary feasibility studies, permitting and execution of all necessary infrastructure agreements. In relation to any statements pertaining to future exploration targets or conceptual exploration targets, the nature of the exploration target means that the potential quantity and grade is conceptual in nature. This presentation and information, opinions or conclusions expressed in the course of this presentation should be read in conjunction with WC8's other periodic and continuous disclosure announcements lodged with the ASX, which will be available on the WC8 website.

The information in this report that relates to Exploration Results and Mineral Resources for the Mount Adrah, Bolt Cutter, and Tabba Tabba Projects is based on, and fairly represents, information compiled by Mr Samuel Ekins, a Competent Person who is a Member of the Australian Institute of Mining and Metallurgy (AusIMM). Mr Ekins is the Technical Director of Wildcat Resources Limited, the owner of the Mount Adrah, Bolt Cutter and Tabba Tabba Projects.

Mr Ekins has sufficient experience that is relevant to the style of mineralisation and type of deposit under consideration, and to the activity being undertaken to qualify as a Competent Person as defined in the 2012 Edition of the JORC Code. Mr Ekins consents to the inclusion in the document of the matters based on his information in the form and context in which it appears.

This presentation contains information extracted from the following ASX market announcements which are available on the Company's website at www.wildcatresources.com.au

TABBA TABBA DELIVERS 119.2M AT 1.0% LI2O FROM LEIA – 05 MARCH 2024
WILDCAT PLANS 100,000M DRILL PROGRAM – 24 JANUARY 2024
DIAMOND DRILLING RECOMMENCES AT TABBA TABBA LITHIUM PROJECT – 09 JANUARY 2024
WIDE LITHIUM INTERCEPTS FROM DIAMON DRILLING AT LEIA – 21 DECEMBER 2023
WILDCAT DRILLING EXTENDS LEIA PEGMATITE TO 2KM – 29 NOVEMBER 2023
WILDCAT RAISES \$100M IN SHARE PLACEMENT – 10 NOVEMBER 2023
WILDCAT HITS 180M AT 1.12% LI2O AT LEIA
WILDCAT STRENGTHENS LEADERSHIP TEAM – 26 OCTOBER 2023
WILDCAT HITS 85M AT 1.5% LI2O AT TABBA TABBA – 20 OCTOBER 2023
COMPLETION OF THE TABBA TABBA ACQUISITION – 12 OCTOBER 2023
HIGH-GRADE LITHIUM ASSAYS CONTINUE AT TABBA TABBA – 12 OCTOBER 2023
MAJOR LITHIUM DISCOVERY AT TABBA TABBA – 18 SEPTEMBER 2023
WILDCAT APPOINTS NON-EXECUTIVE DIRECTOR – 07 SEPTEMBER 2023
SECOND RC RIG UNDERWAY AT TABBA TABBA – 23 AUGUST 2023
SECOND RC RIG MOBILISING TO TABBA TABBA – 08 AUGUST 2023
DRILLING UNDERWAY AT TABBA TABBA – 14 JULY 2023
NEW PEGMATITES IDENTIFIED AT TABBA TABBA – 5 JULY 2023
WILDCAT SECURES 100% INTEREST IN PILGANGOORA NORTH – 22 JUNE 2023
FIELD WORK COMMENCES AT TABBA TABBA – 31 MAY 2023
WILDCAT SET TO ACQUIRE RICH MINERALISED LCT PEGMATITE FIELD IN THE WORLD CLASS PILBARA LITHIUM PROVINCE, WA – 15 MAY 2023
TENEMENT UPDATE BOLT CUTTER GOLD/LITHIUM PROJECT – 13 JANUARY 2023
EXPLORATION UPDATE BOLT CUTTER EAST LITHIUM PROJECT – 29 JUNE 2022
LARGE LITHIUM SOIL ANOMOLY DEFINED AT BOLT CUTTER - PILBARA– 28 MARCH 2022

ASX Listing Rule Information

The company confirms that it is not aware of any new information or data that materially affects the information included in the original market announcements and, in the case of estimates of Mineral Resources, that all material assumptions and technical parameters underpinning the estimates in the original market announcements continue to apply and have not materially changed. The company confirms that the form and context in which the competent persons findings have not been materially modified from the original announcement.

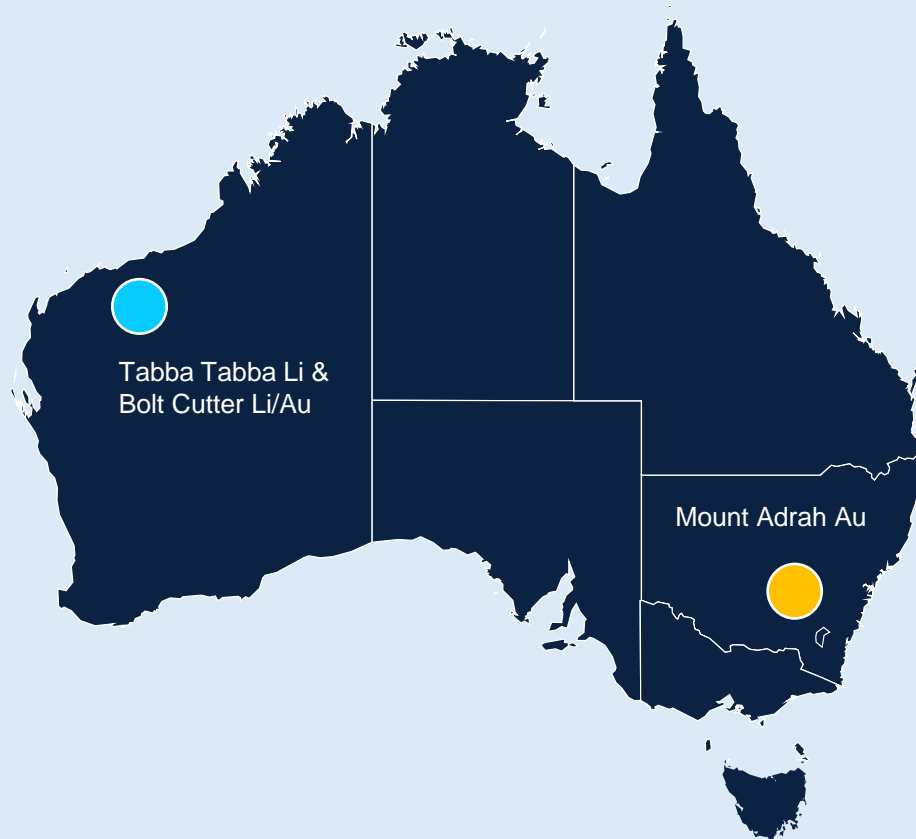
Forward-Looking Statements

This document may include forward-looking statements. Forward-looking statements include, but are not limited to, statements concerning Wildcat Resources Group Limited's planned exploration program and other statements that are not historical facts. When used in this document, the words such as "could," "plan," "estimate," "expect," "intend," "may", "potential," "should," and similar expressions are forward-looking statements. Although Wildcat Resources Limited believes that its expectations reflected in these forward-looking statements are reasonable, such statements involve risks and uncertainties and no assurance can be given that actual results will be consistent with these forward-looking statements.

Not an offer in the United States

This presentation has been prepared for publication in Australia and may not be released to US wire services or distributed in the United States. This presentation does not constitute an offer to sell, or a solicitation of an offer to buy, securities in the United States or any other jurisdiction. Any securities described in this presentation have not been, and will not be, registered under the US Securities Act of 1933 and may not be offered or sold in the United States except in transactions exempt from, or not subject to, the registration requirements of the US Securities Act and applicable US state securities laws.

KEY PROJECT LOCATIONS



WC8
ASX CODE

1,206M
SHARES ON ISSUE

\$603M
MARKET CAP AT
50.0C

A\$90.5M
CASH AT BANK
(31 MAR 2024)

OPTIONS/PERFORMANCE RIGHTS:

76M PERFORMANCE INCENTIVE

122M DEAL FEES FOR TABBA TABBA

134M PERTAINING TO MT ADRAH
GOLD PROJECT

BOARD OF DIRECTORS AND MANAGEMENT



JEFF ELLIOTT
NON-EXECUTIVE
CHAIRMAN

- +30 yrs exploration, mining and business management experience
- Former MD of international mining consultants CSA Global
- Co-founder of successful private companies across mining services, technology and mineral exploration



AJ SAVERIMUTTO
MANAGING DIRECTOR

- 25+ yrs of Corporate and Mining Operational experience
- Former Mine Manager of the giant Grasberg project
- Mining Engineer and Accountant
- Extensive involvement in ASX companies and NED of Grange Resources



MATTHEW BANKS
EXECUTIVE DIRECTOR

- Joint founder of Wildcat Resources
- Been involved in many value add transactions including Spectrum Metals and Delta Lithium
- Joint founder of Rumble Resources
- Background in Finance and key market facing executive



SAMUEL EKINS
TECHNICAL DIRECTOR

- Geologist and experience with senior roles at Evolution Mining
- Lead the technical team to the Tabbatabba lithium discovery
- Involved in Business Development and key executive with Wildcat Resources



TIM MANNERS
CHIEF FINANCIAL
OFFICER

- 25+ yrs of Finance experience
- Involved in many ASX companies but most recently at Ramelius Resources
- Involved in over 15 M&A transactions
- Market facing executive



TORRIN ROWE
GEOLOGY MANAGER

- Experienced geologist with specialised experience in progressing greenfields projects to pre-mining in several jurisdictions.
- Lead the technical team to the Tabbatabba lithium discovery
- Completing Masters in LCT mineralisation in the Pilbara



MELISSA MCCLELLAND
EXPLORATION MANAGER

- Geologist with 10+ yrs of experience in Geology with Newmont and Kidman Resources.
- Experienced in Lithium with Mt Holland and Covalent Lithium project.
- Taken Lithium projects from discovery to development.



JAMES BAHEN
COMPANY SECRETARY

- Corporate Advisor and Chartered Secretary
- NED and Company Secretary to a number of ASX companies
- Member of the Governance Institute of Australia and holds a Graduate Diploma of Applied Finance and a Bachelor of Commerce degree

HISTORY – DISCOVERY OF TABBA TABBA



LEIA PEGMATITE TIER 1 POTENTIAL – ASSAY RESULTS



180m @ 1.1%

- Li₂O from 206m (TARC148) (est. true. width)
- including **21m at 1.4%** Li₂O from 209m

99m @ 1.2%

- Li₂O from 207.0m (TARC234D) (est. true. width)
- within **135m at 0.9%** Li₂O from 179.0m

119.2m @ 1.0%

- Li₂O from 334.4m (TADD010) (est. true. width)
- including **31m at 1.7%** Li₂O from 336m

70m @ 1.0%

- Li₂O from 183m (TARC145) (est. true. width)
- including **47m at 1.5%** Li₂O from 183m

85m @ 1.5%

- Li₂O from 133m (TARC128) (est. true width)
- including **9m at 3.0%** Li₂O from 199m

69.9m @ 1.2%

- Li₂O from 399m (TARC245D) (est. true. width)
- within **123.4m at 0.9%** Li₂O from 350.7m

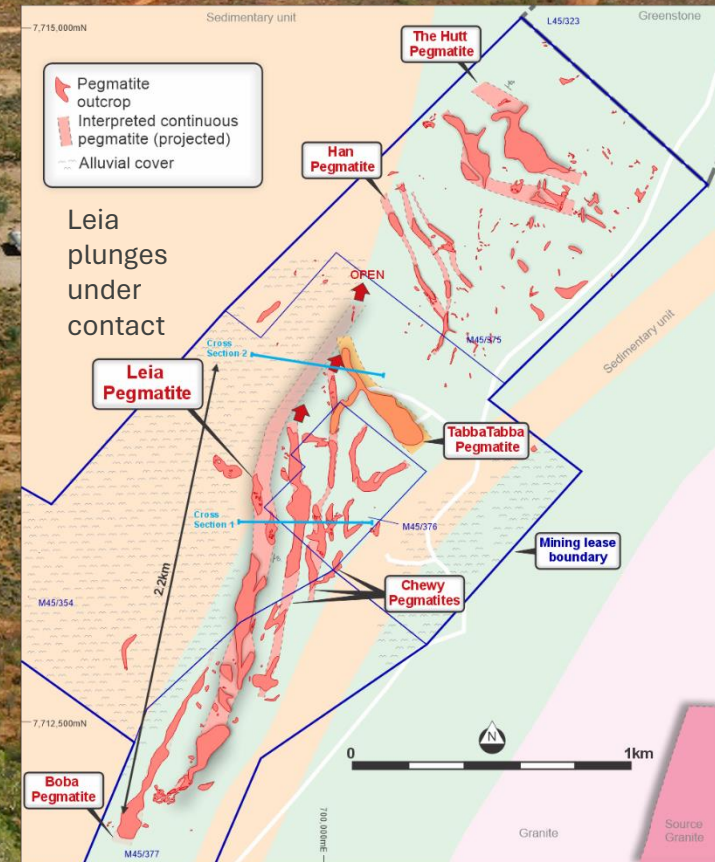
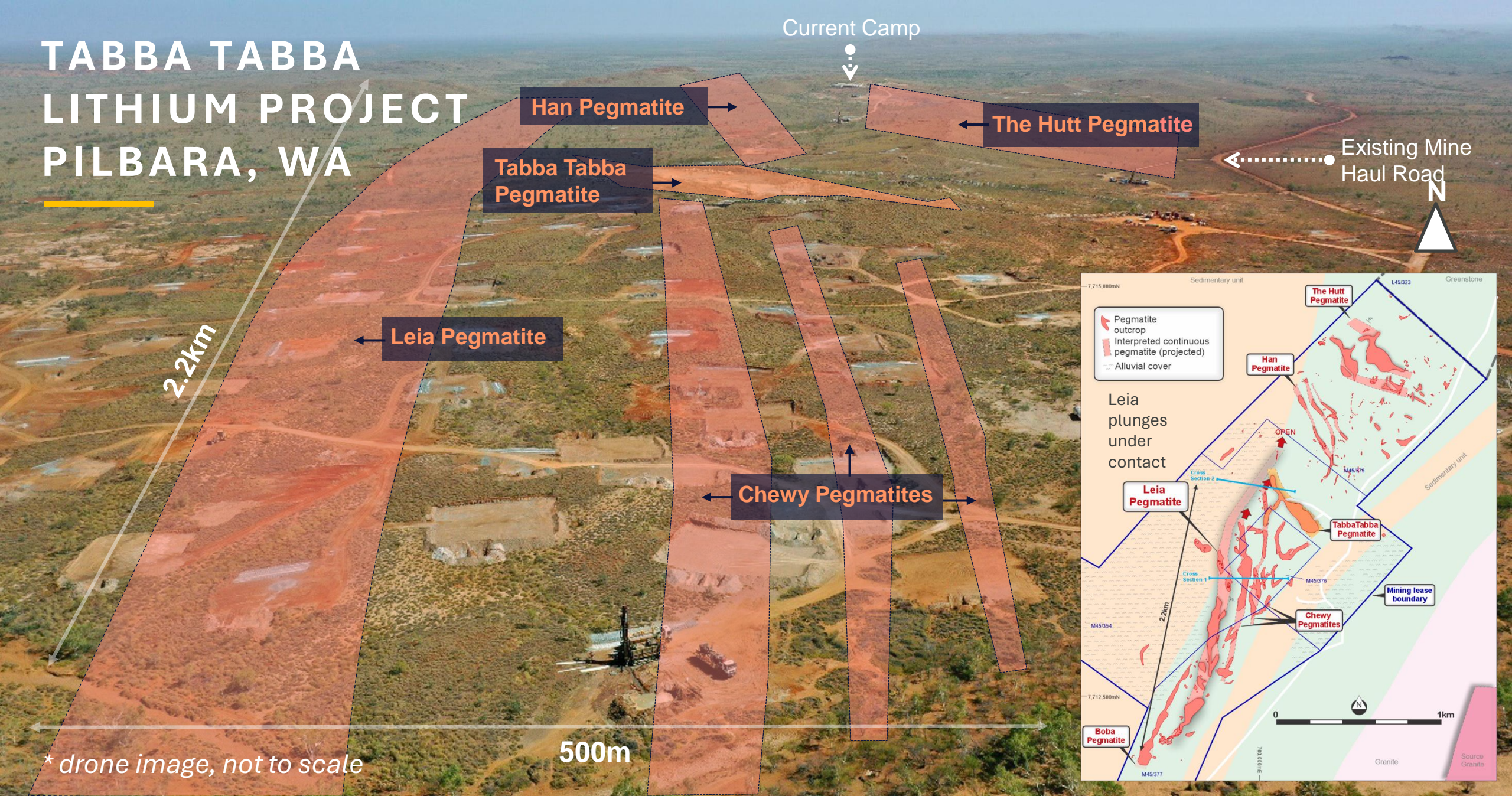
85m @ 1.3%

- Li₂O from 167m (TARC144) (est. true width)
- including **10m at 2.5%** Li₂O from 175m

60.3m @ 1.4%

- Li₂O from 297.8m (TARC161AD) (est. true. width)
- within **111.4m at 0.9%** Li₂O from 246.6m

TABBA TABBA LITHIUM PROJECT PILBARA, WA



LEIA ISOMETRIC VIEW AT TABBA TABBA

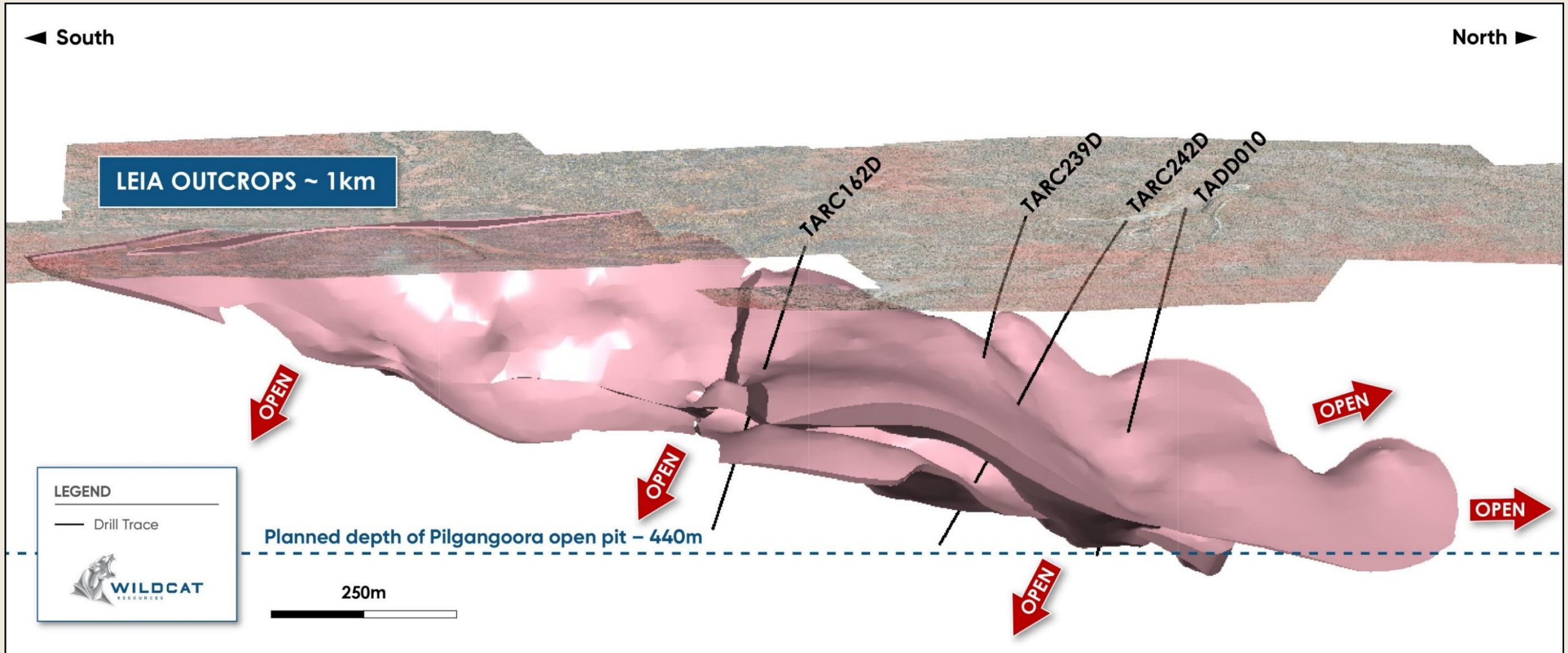
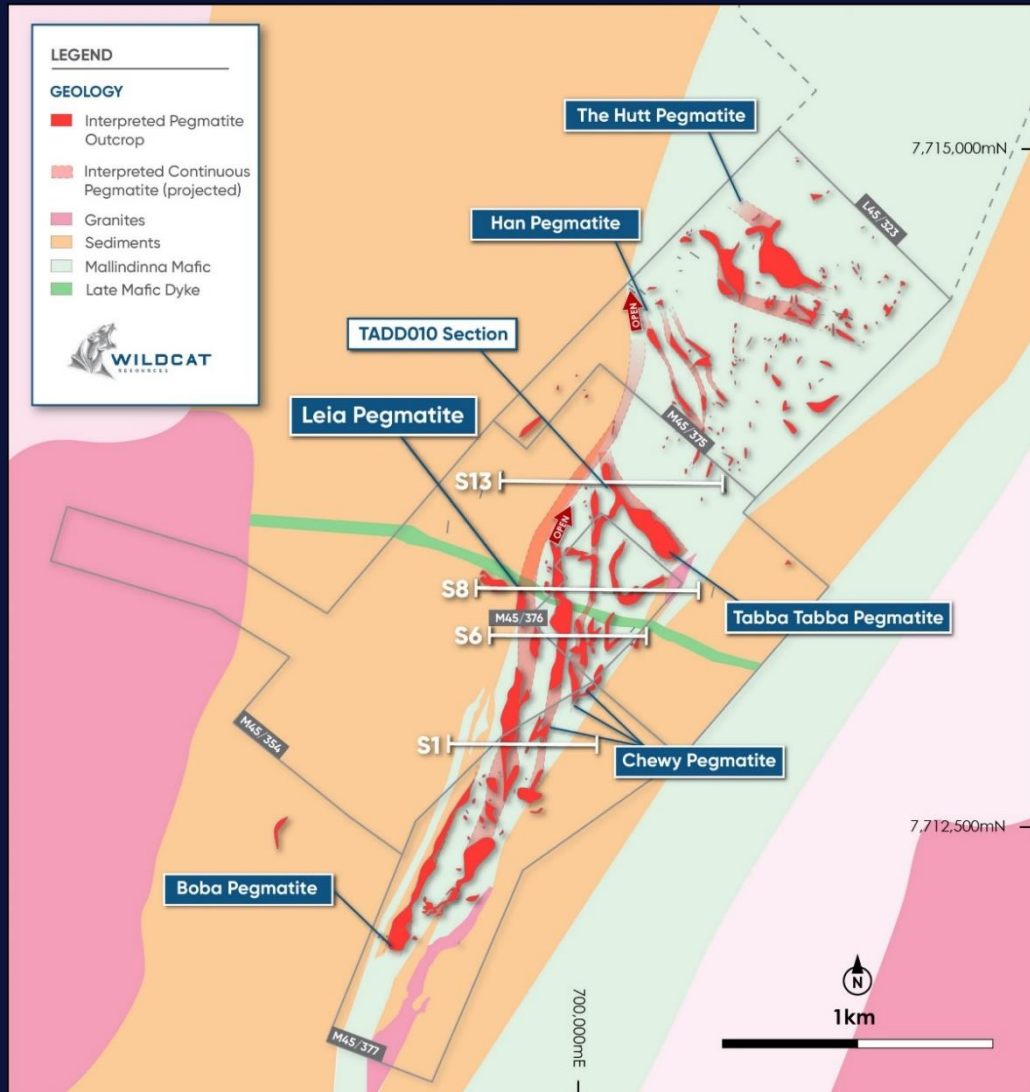
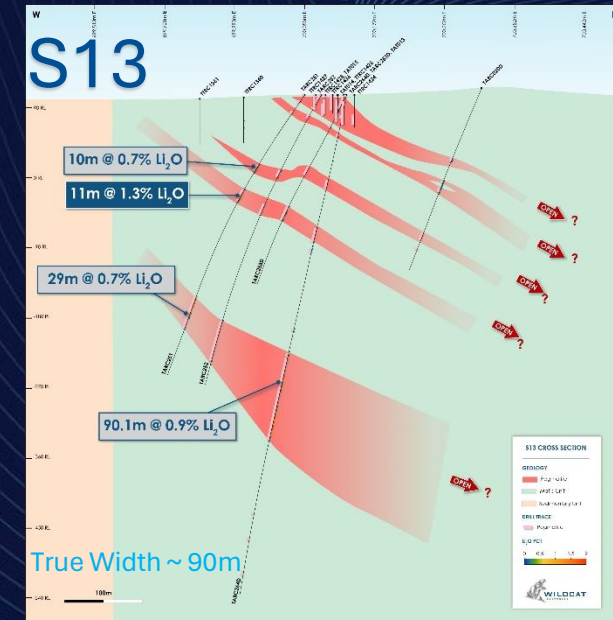
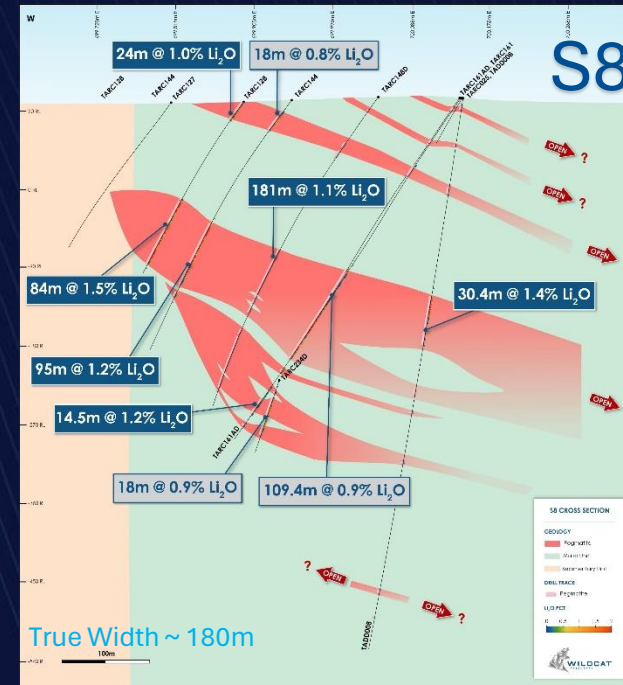
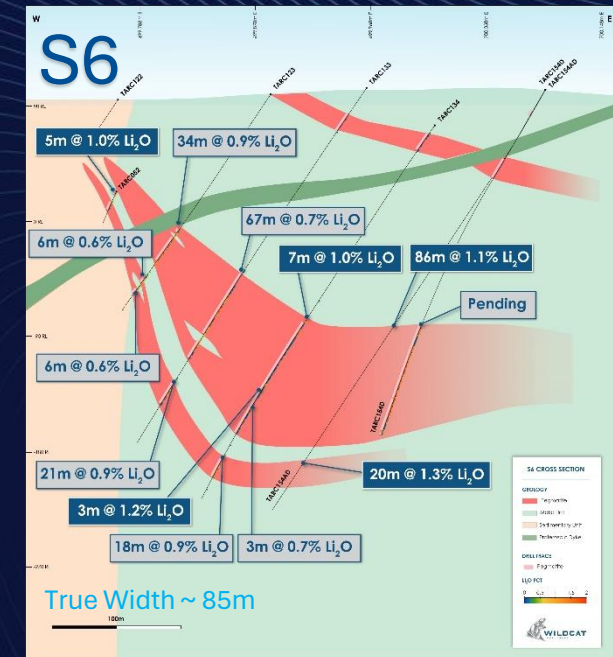
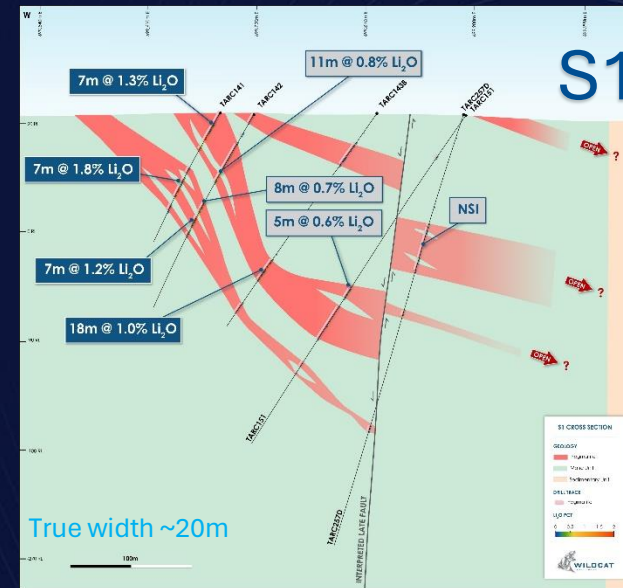


Figure 1 – Isometric view of the evolving geological model for the Leia Pegmatite (pink) with the with the location of recently reported intercepts. Note pegmatite wireframes for the Hutt, Han, Tabbatabba Tantalum, Chewy and Boba prospects are not shown for illustrative clarity. View is looking down towards the west.

CROSS SECTIONS



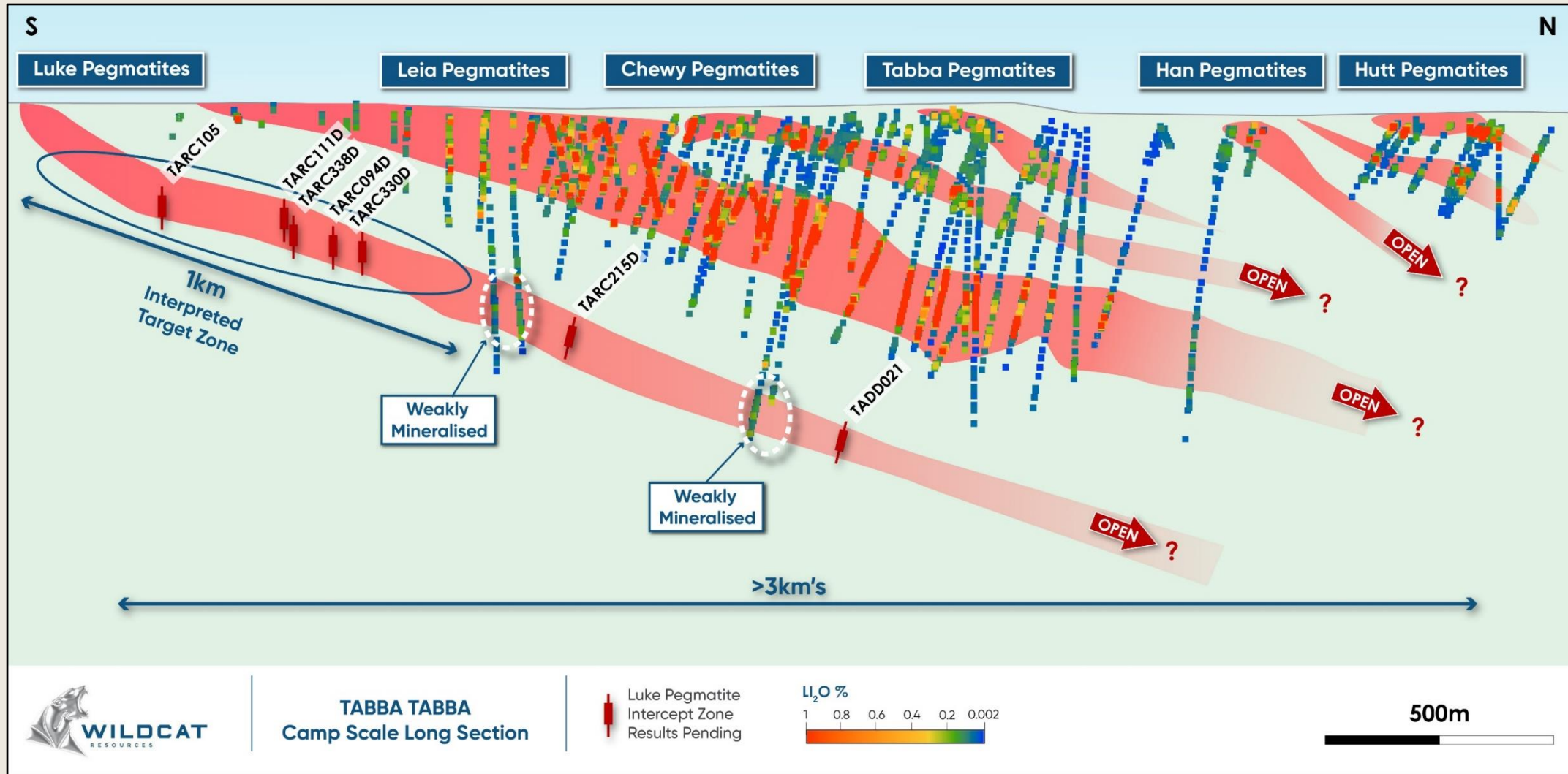
Note: all results have been previously reported



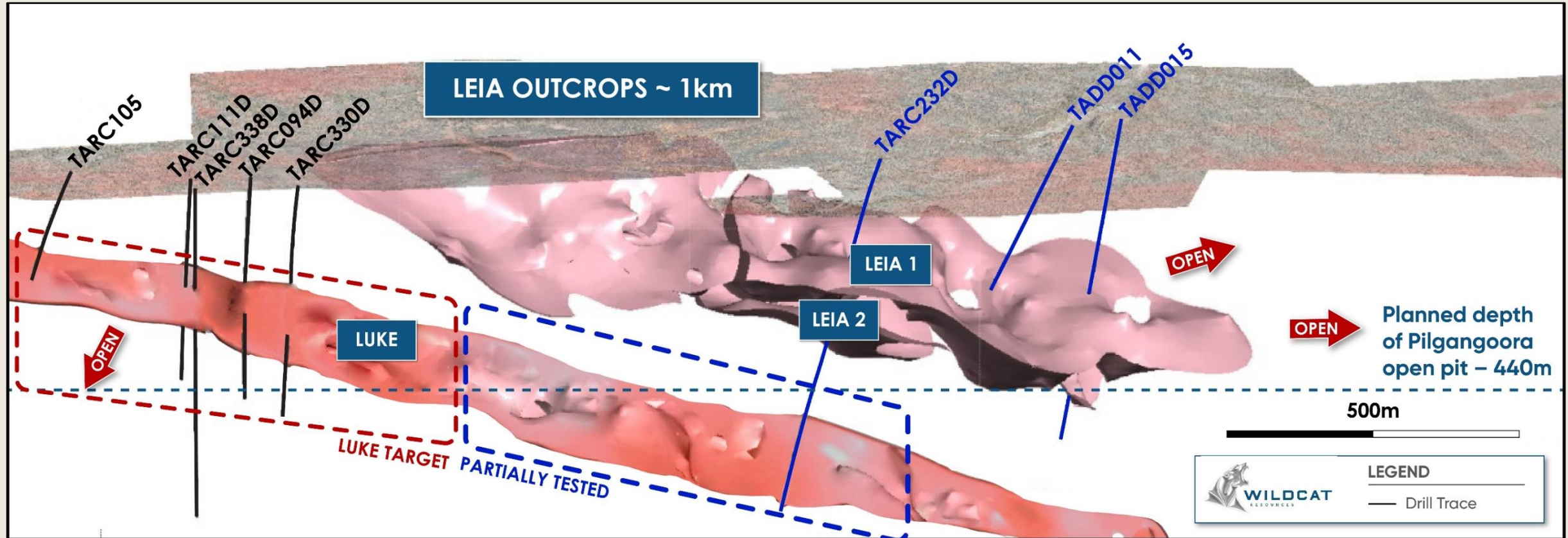
LUKE DISCOVERY



LONG SECTION



LUKE DISCOVERY – ISOMETRIC IMAGE



- 41.0m @ 1.0% Li₂O from 267m (TARC011D) (downhole width)

Announcement 10 April 2024 -NEW DISCOVERY AT TABBA TABBA LUKE PEGMATITE RETURNS 41M @ 1.0% Li₂O

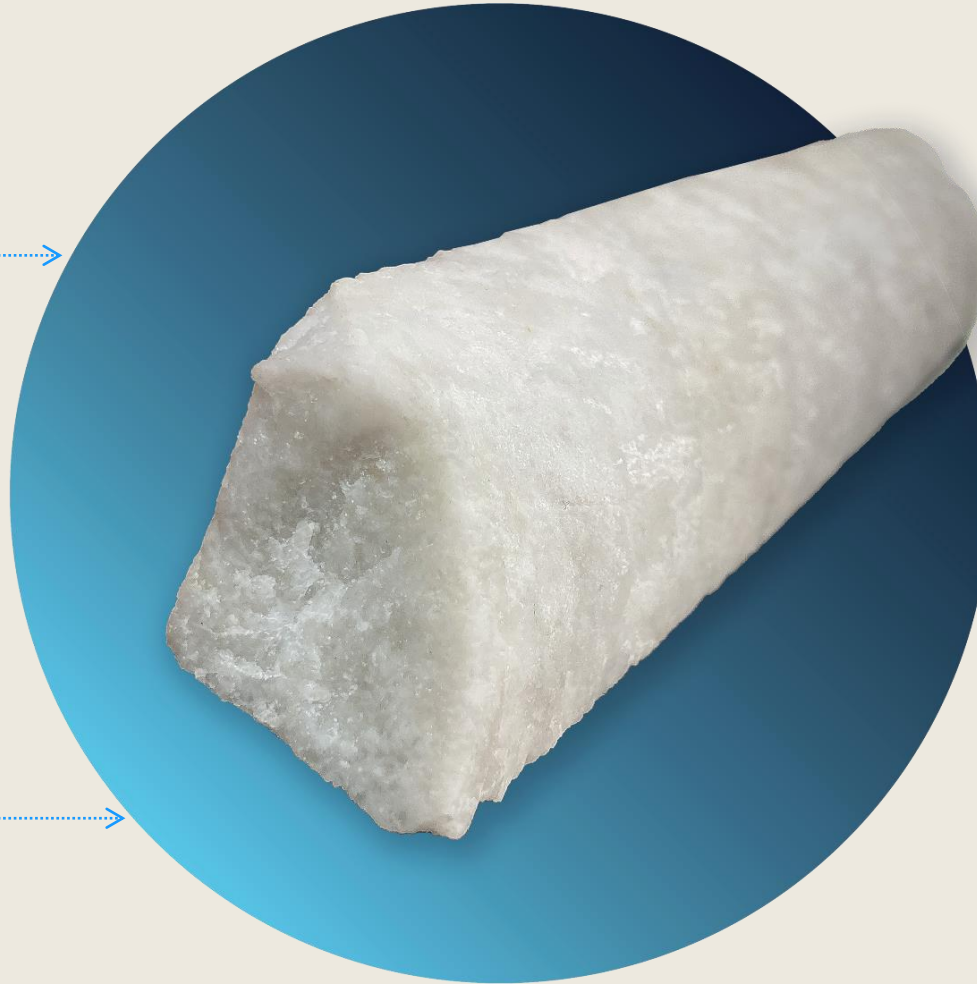
MINERALOGY SPODUMENE DOMINANCE

SPODUMENE DOMINANCE IN CORE

- UV Fluorescence
- Fourier transform infrared (FTIR)
- X-Ray diffraction (XRD)

METALLURGICAL SIGHTER TEST WORK IN PROGRESS

- 250kg of sample at Nagrom
- Using core samples
- Test work being completed to test **DMS** and **float** circuits



TO BE FOLLOWED WITH STAGE 2 VARIABILITY TESTWORK

- To be used for Technical Studies

Diamond drill hole TARC161AD

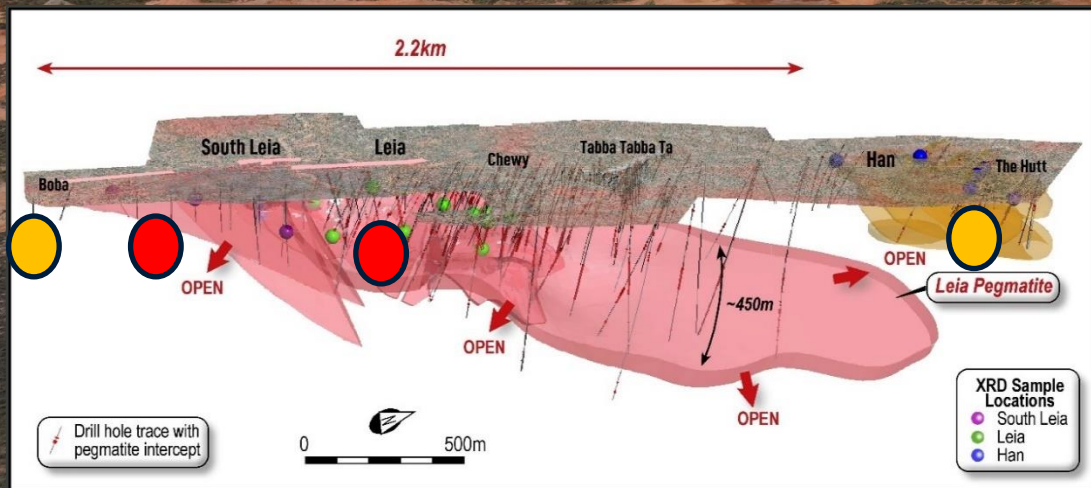
EXPLORATION CAMP FOR DRILLING AT TABBA TABBA



DRILLING FOR THE NEXT 6 MONTHS

Rigs onsite drilling a number of targets

LEIA EXTENSIONS



Luke

Leia Drilling

Other pegmatites

TABBA TABBA MINERAL LEASES – TECHNICAL STUDIES



01

ENVIRONMENT

Approvals progressing
Flora and fauna surveys
Characterisation test work

02

GEOLOGY

Engaged resource consultant to
build model

03

MINING

AMC engaged to do preliminary
work

04

LABORATORY

29 holes in the lab being assayed

05

METALLURGY

First pass sighter test work in
progress



Key Value Drivers



The Right Location

- **Pilbara** - produces 20% of the world's **spodumene** lithium
- **80km** from port
- Approved **Mining Lease**

The Right Asset

- Impressive **size** and **scale**
- Extensive drilling now underway
- **Funded** for exploration, res. drilling & studies

The Right Team

- **Discoverers** of Tabbatabba
- Extensive exploration experience
- **Development** experience and track record


THANK YOU

Presented by AJ Saverimutto

info@wildcatresources.com.au
www.wildcatresources.com.au



APPENDIX



Hobbs Pipe
Intrusion

MT ADRAH GOLD PROJECT

LACHLAN FOLD BELT
NEW SOUTH WALES (NSW)



WILDCAT
RESOURCES

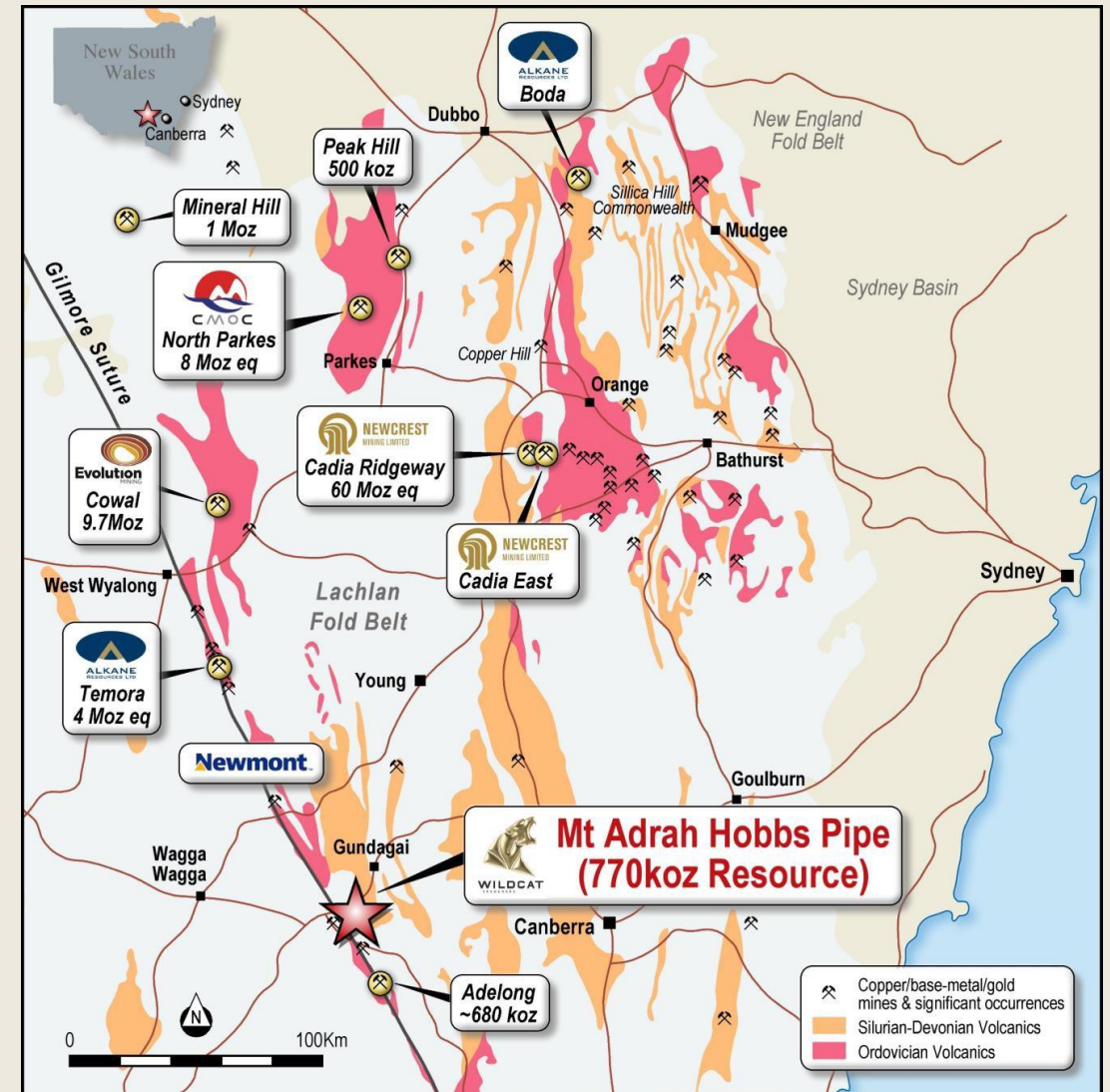
LACHLAN FOLD BELT – A MAJOR GOLD PROVINCE IN NSW, AUSTRALIA

Lachlan Fold Belt has **several multi-million ounce gold camps** and has produced over **44Moz of gold**

Mt Adrah is located on the Gilmore Suture, which is a prolific gold trend associated with mineralisation at:

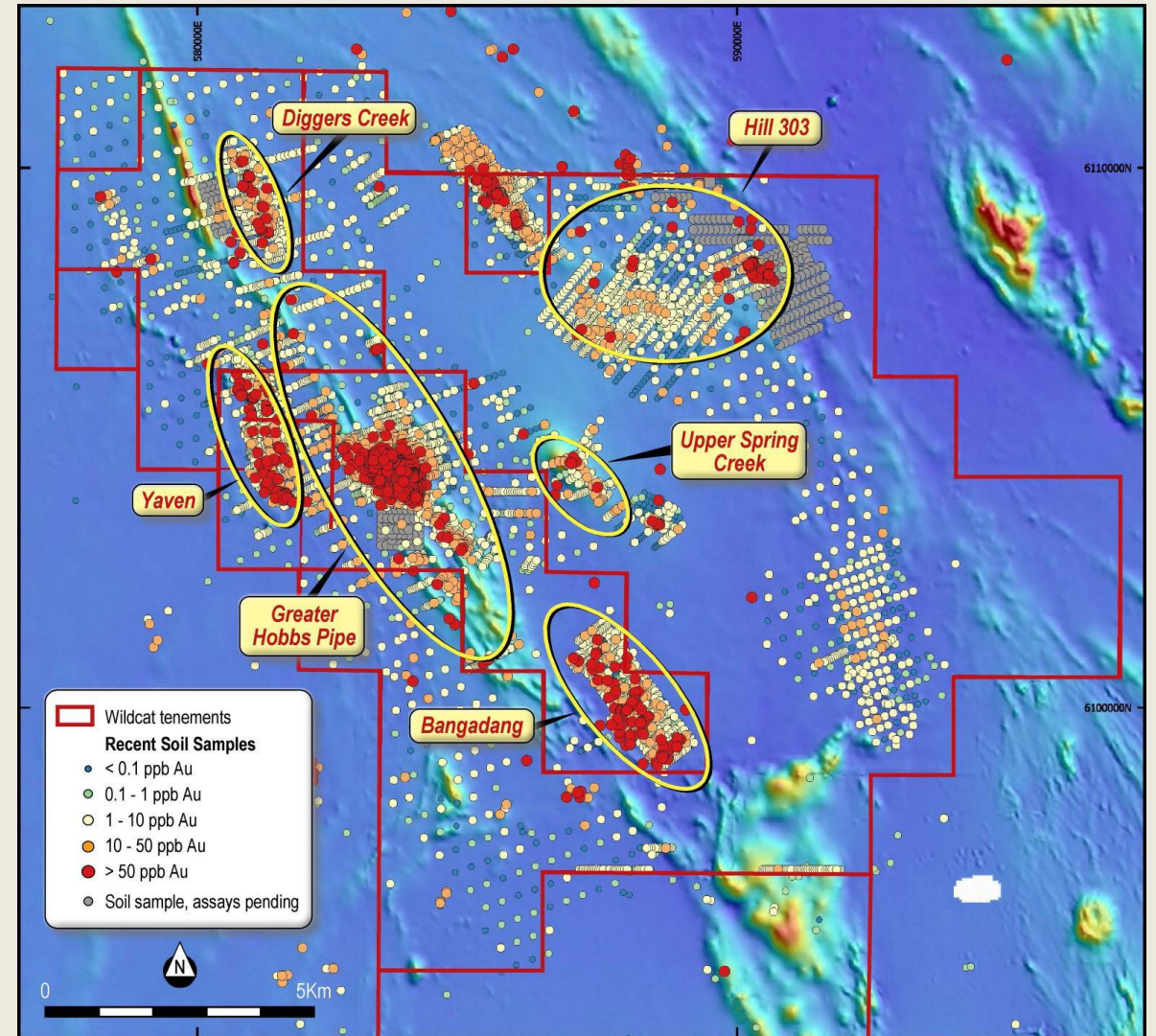
- Cowal Au deposit >10Moz Au
- Temora Cu/Au deposit >4Moz Au equivalent
- Adelong Goldfield >0.7Moz
- Cobar Goldfields >4Moz
- Numerous small deposits and artisanal working

Wildcat's tenements are ~500km² (50,000Ha) and encompass 52km of strike of the Gilmore Suture Zone



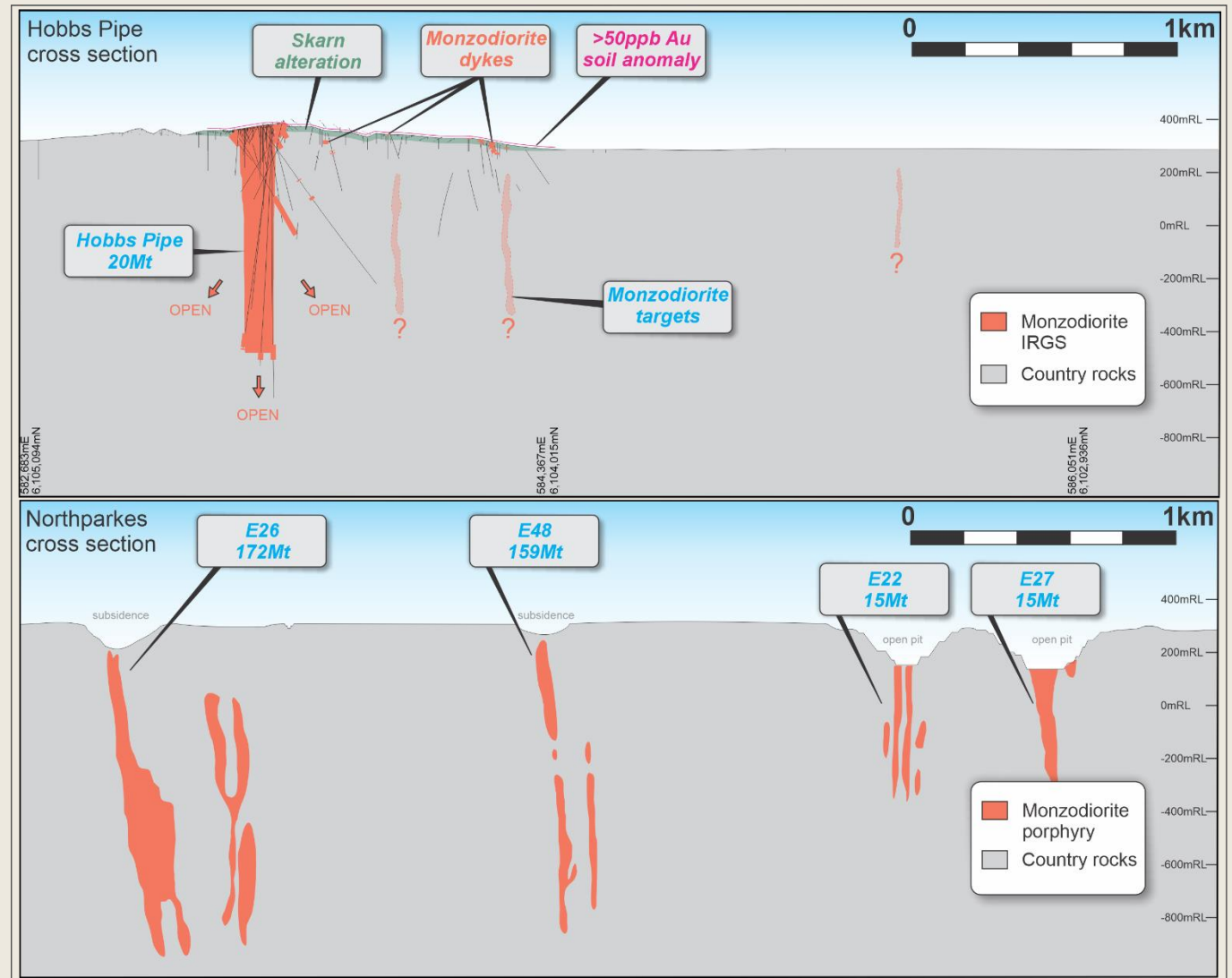
MT ADRAH GOLD PROJECT – REGIONAL GOLD POTENTIAL

- Over 6,000 soil samples collected since project acquired
- Target rich with numerous multi-kilometre gold anomalies:
 - Hobbs Pipe
 - Yaven
 - Upper Spring Creek
 - Hill 303
 - Diggers Creek
 - Bangadang
- Majority of targets, despite having abundant historical workings, have not been tested through drilling
- Hobbs Pipe Mineral Resource:
 - 20.5Mt at 1.1 g/t Au for 770koz¹ from surface
 - **826m at 1.3 g/t Au including 178m at 2.0g/t Au from surface (GHD006)²**
- Proximal high-grade reefs adjacent to Hobbs Pipe:
 - 10m @ 17.7 g/t Au (GHD009)³



HOBBS PIPE GOLD DEPOSIT – INTRUSIVE ANALOGUE

- Similarities to deposits in the +200Moz Tintina Gold Province in Alaska/Canada and to 5Moz Kidston and 0.4Moz Timbarra deposits in Eastern Australia
- Limited drilling, mainly around Hobbs Pipe
- Significant potential for more mineralised intrusions
- Comparison with the 400Mt CMOC Northparkes⁴ district in Lachlan fold, NSW:
 - Past Production: 800,000t copper and 1Moz gold for 4.2Moz gold equiv.
 - Existing resources: >400Mt at 0.55% Cu and 0.2g/t Au for approximately 14Moz gold equiv.⁶



References

1. JORC (2012) Indicated and Inferred Resources. Refer to ASX Announcement by Sovereign Gold Company Ltd (now Force Commodities Limited) on 27/12/2013: <https://www.asx.com.au/asxpdf/20131227/pdf/42lwgh4996pvch.pdf> and Fraser Range Metals to Acquire Mount Adrah Gold Project on 28/08/2019 <https://www.asx.com.au/asxpdf/20190823/pdf/447s52fxbdmrfc.pdf>
2. Refer to ASX Announcement by Sovereign Gold Company Ltd on 30/09/2013: <https://announcements.asx.com.au/asxpdf/20130930/pdf/42jprb60kkkrsx.pdf>
3. Refer to ASX Announcement by Sovereign Gold Company Ltd on 28/10/2013: <https://www.asx.com.au/asxpdf/20131028/pdf/42kc3zbm55l7ys.pdf>
4. Northparkes Gold and Silver Stream presentation, July 12, 2020: <https://minedocs.com/20/Northparkes-TFPM-CP-07122020.pdf>