

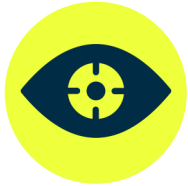
Positioned for success

RIU
Sydney
Resources
Round-up



Resources

Positioned for success



Focused on discovery

- Focus on Li and Ni exploration and discovery in WA
- 2024 drilling program underway
- Additional gold, copper and cobalt exploration targets



Highly prospective geology

- Proven geological provinces of Lake Johnston, Mt Ida and Eastern Goldfields of WA
- Partnering IGO in Fraser Range with potential for Nova style mineralisation



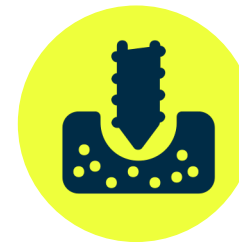
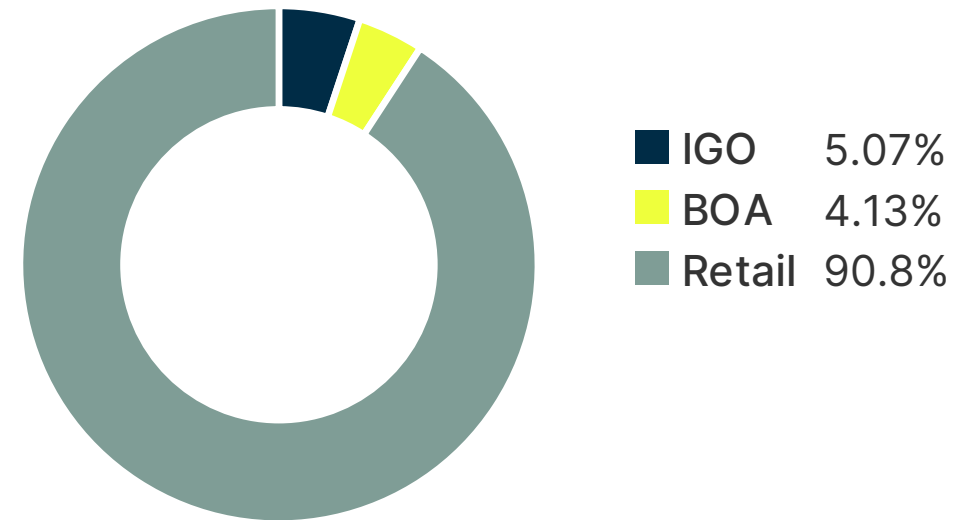
Funded for 2024 drilling

- Free carried by IGO over 6 Fraser Range tenements
- Sold non-core assets for cash and shares

BOA Resources – company overview

Capital structure	6 May 2024
Shares on issue ¹	123,352,847
Share price	\$0.026
Market capitalisation	\$3.21M
Top 30 shareholders	46%
Total number of shareholders	967
Debt	\$0
Cash ²	\$2.1M

Share ownership



Fully funded for extensive 2024 drilling program

1. Excluding 25,867,322 listed options; 20,720,549 unlisted options, at market close 6 May 2024

2. BOA quarterly to ASX released 30 April 2024

Our people

Board and team with extensive experience in capital markets, resource exploration and discovery and growing shareholder value.

Board



Cath Norman
Chair, Managing Director



Graeme Purcell
Director



James Barrie
Director, Company Secretary

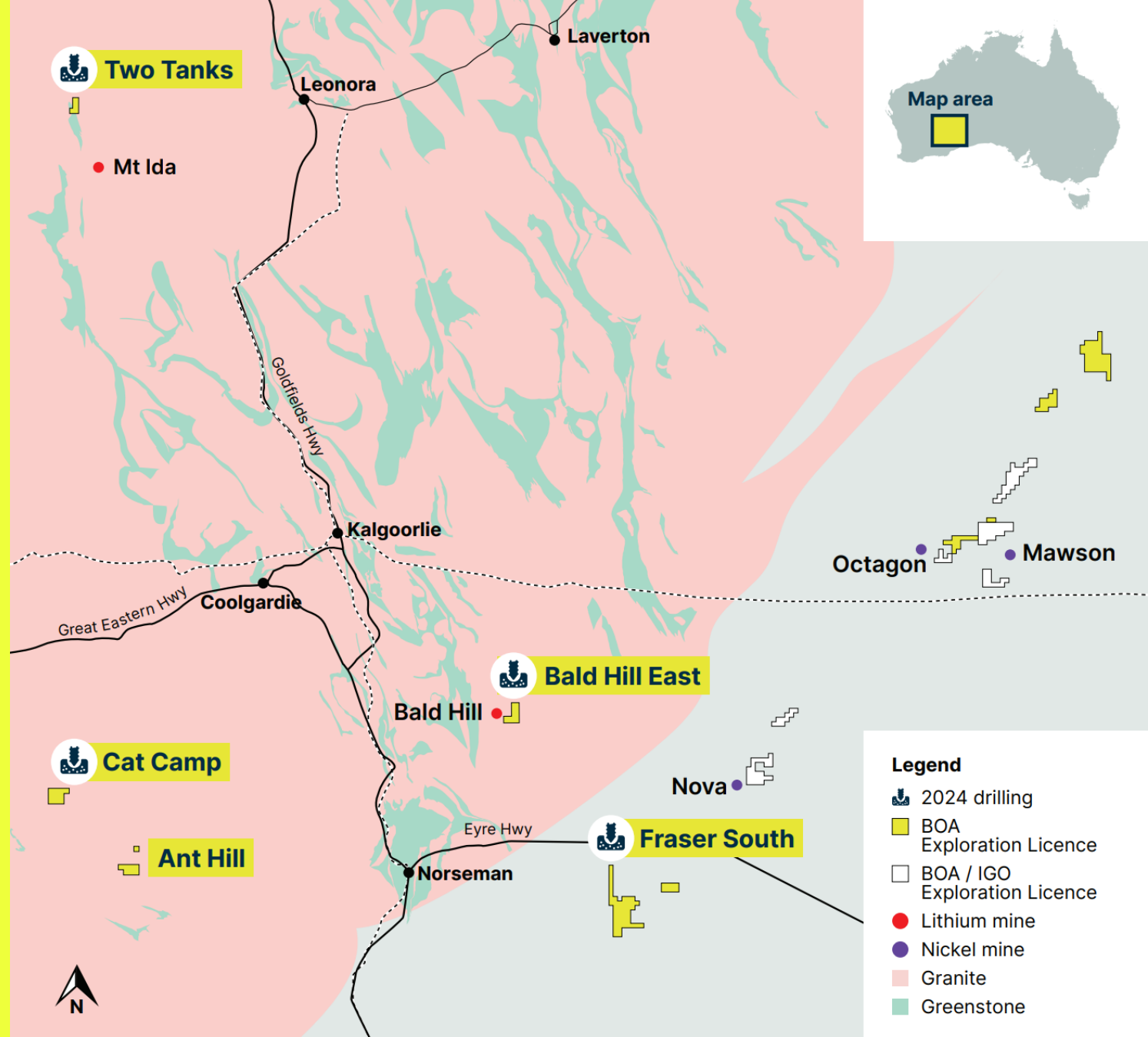
2024 drilling program

Li

Two Tanks
Cat Camp
Bald Hill East

Ni

Fraser South

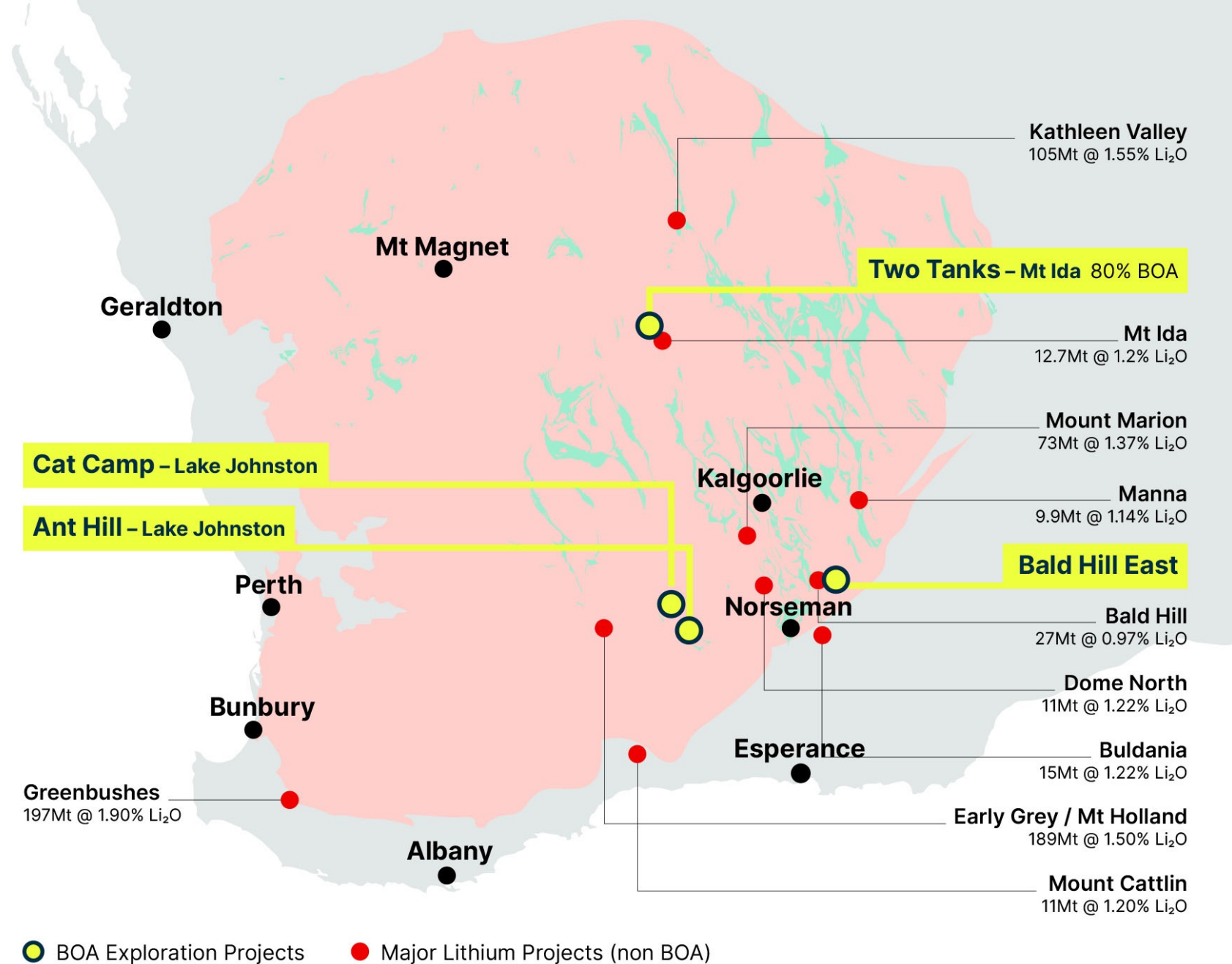


WA Lithium



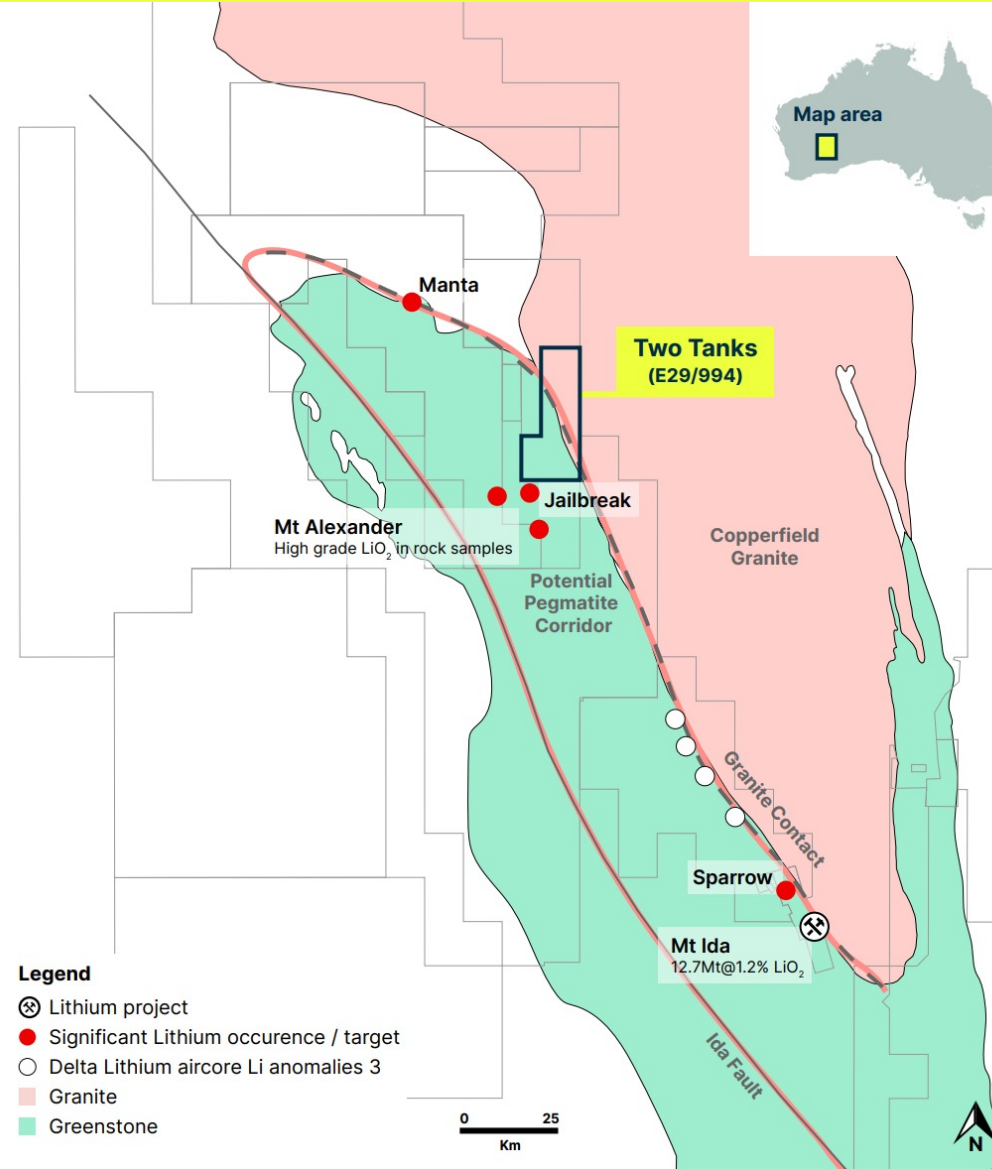
Drilling 3 of 4 Li focused exploration tenements in 2024

All in proven geological provinces housing world-class mineral deposits



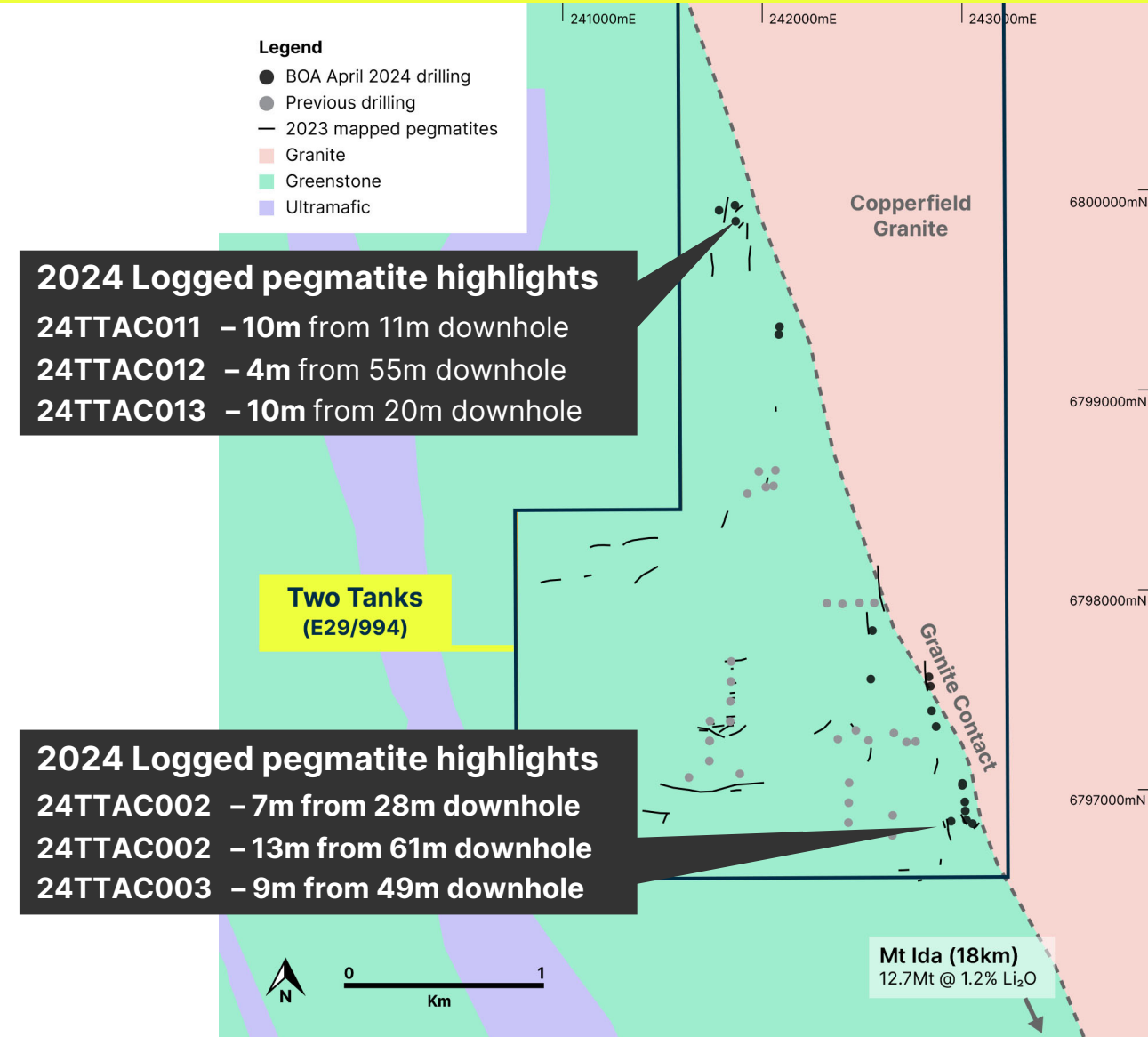
Two Tanks tenement

- Located in the Mt Ida province in an emerging pegmatite corridor
- Pegmatites exposed at surface



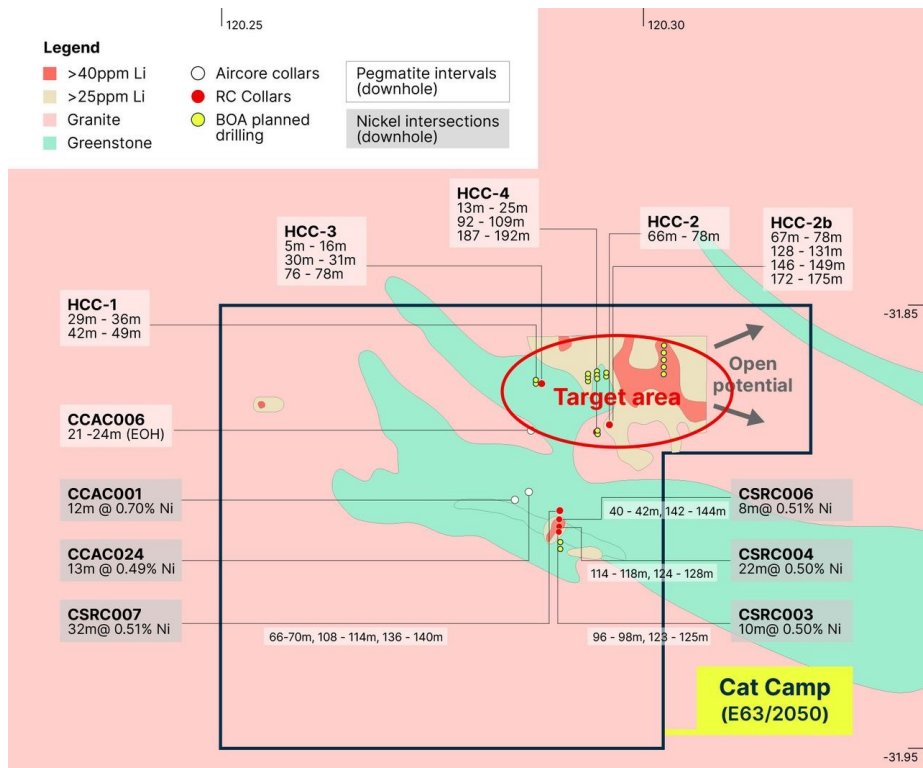
Two Tanks: April 2024 drilling complete

- Multiple, fertile pegmatites intersected during 2023 drilling program¹ - intersected Li up to 2,491ppm Li₂O
- Potential for higher Li grades closer to the contact between the Copperfield Granite and the greenstones
- April 2024 drilling complete – 18 holes for 1,296m
- Encouraging results from drilling observations and rock chips – pegmatites thicker than pre-drill estimates
- 286 samples sent for assay, focus on lithium mineralisation



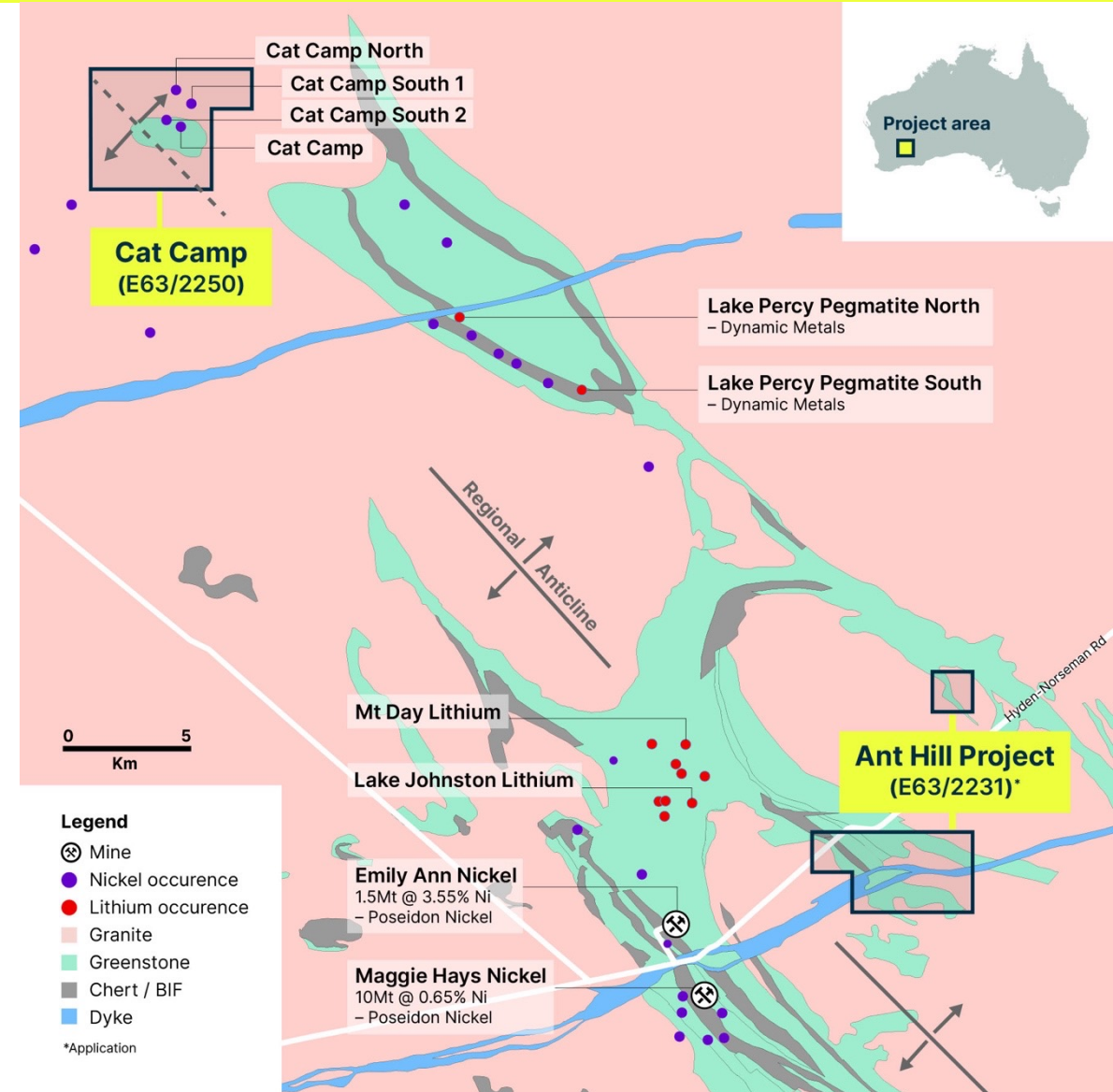
Cat Camp: Known pegmatites supported by geochemistry

- Lake Johnston region, WA
- Known pegmatites and nickel mineralisation, local pegmatites are shallow and thick
- 2024 drilling planned for 21 holes / 1,800 m



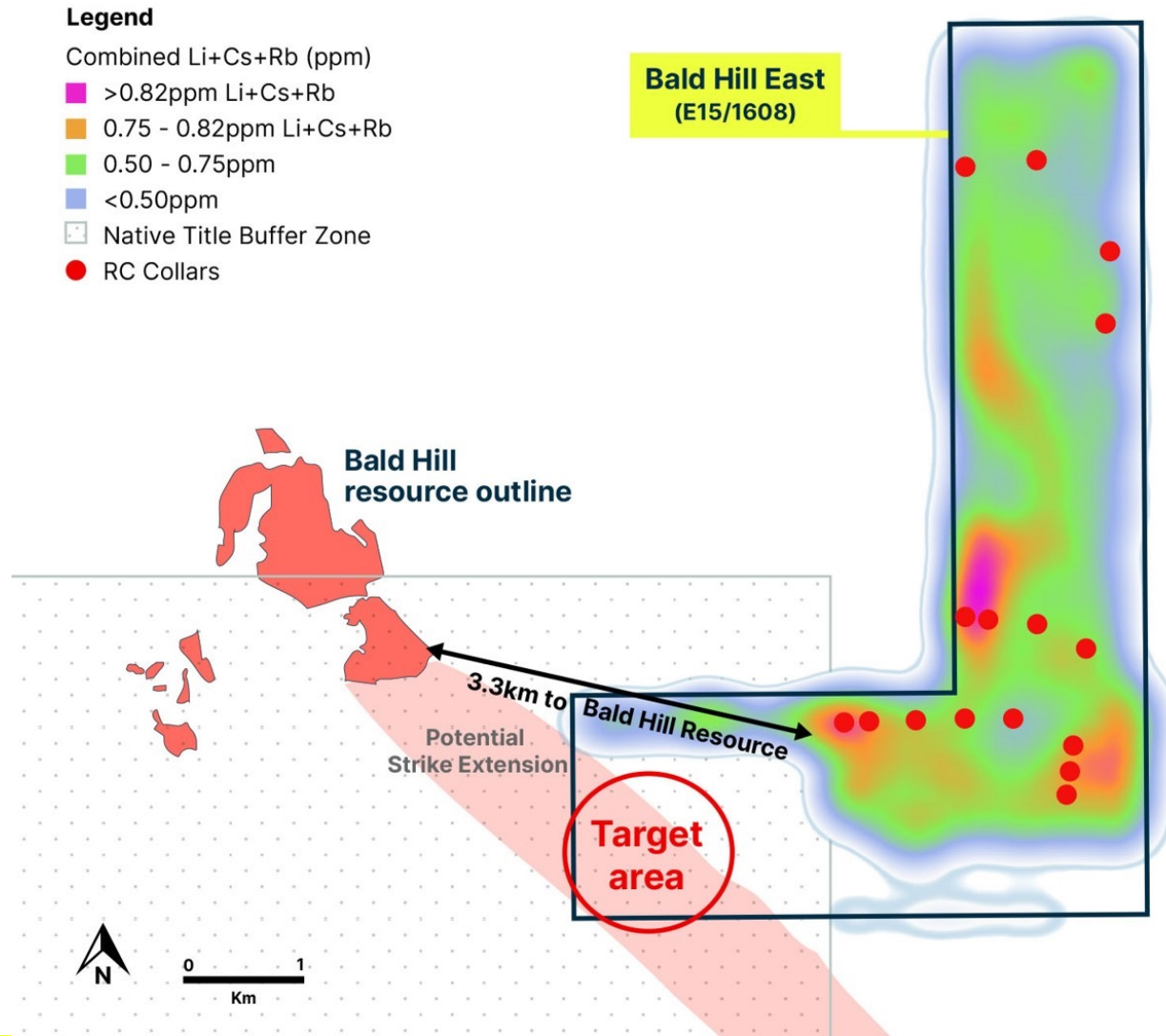
2023 Geochemical mapping

Target area identified for 2024 drilling

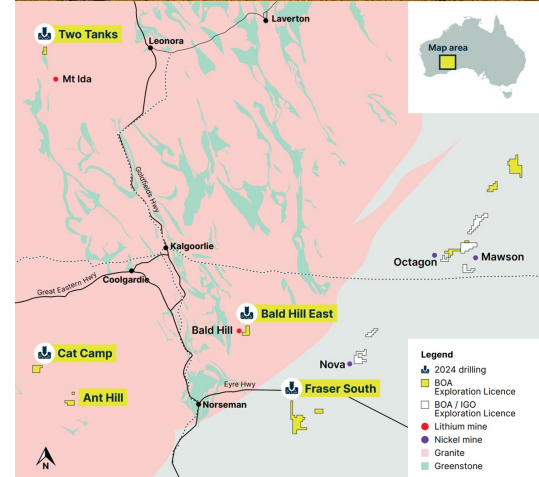


Bald Hill East: Potential extension of Bald Hill mineralised zone

- Located approximately 3kms from the Bald Hill lithium mine (26.5Mt @ 1% Li₂O resource)
- Potential strike extension of Bald Hill mineralisation
 - **Target area for 2024 drilling**
- Numerous new Li discoveries and deal flow in region
- Heritage access agreement executed with Ngadju Native Title Corporation



Mineral Resources Ltd's Bald Hill mine (from website)



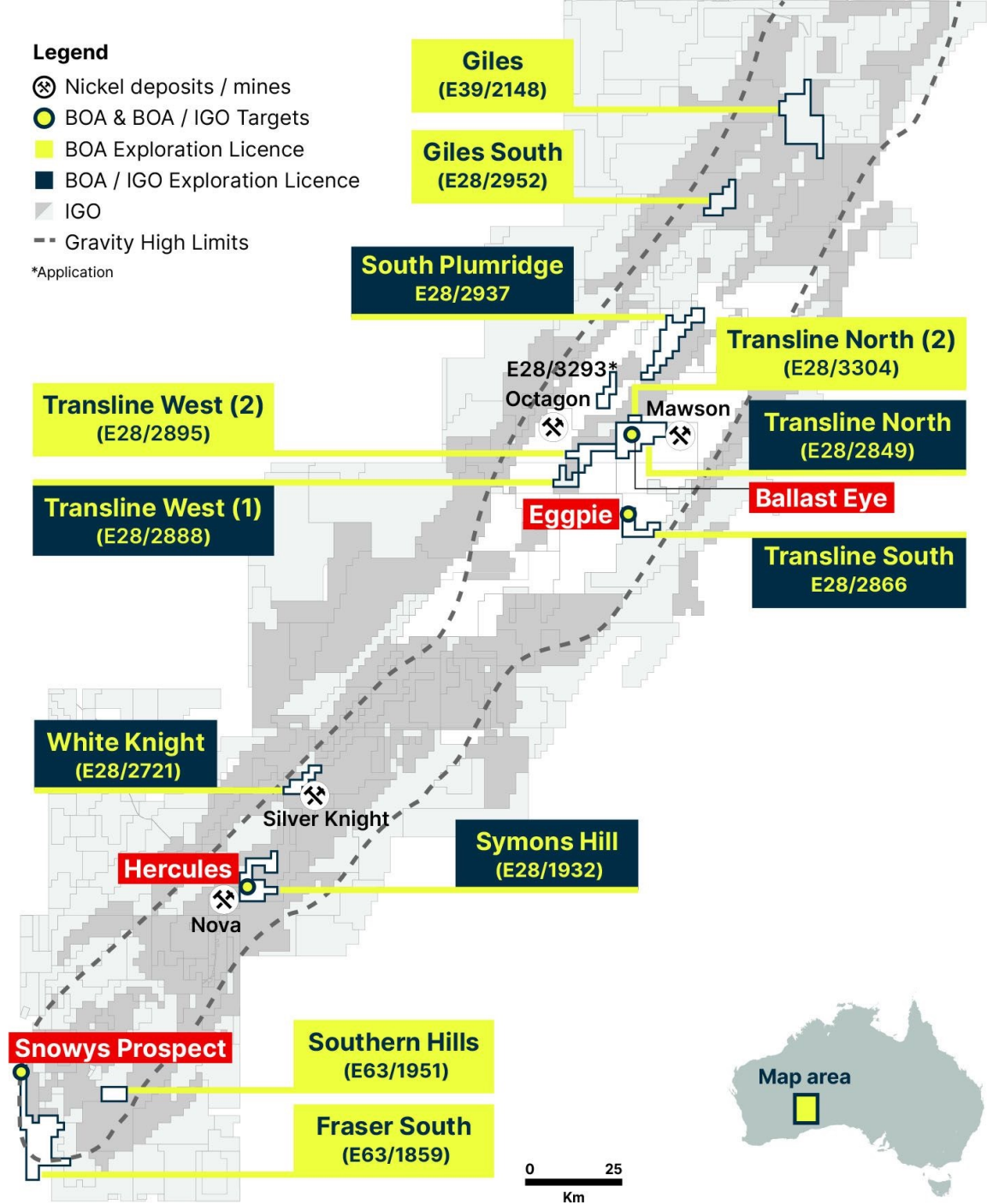
WA Nickel



Fourteen tenements in the highly prospective Fraser Range, WA

IGO operate six tenements under agreement with BOA

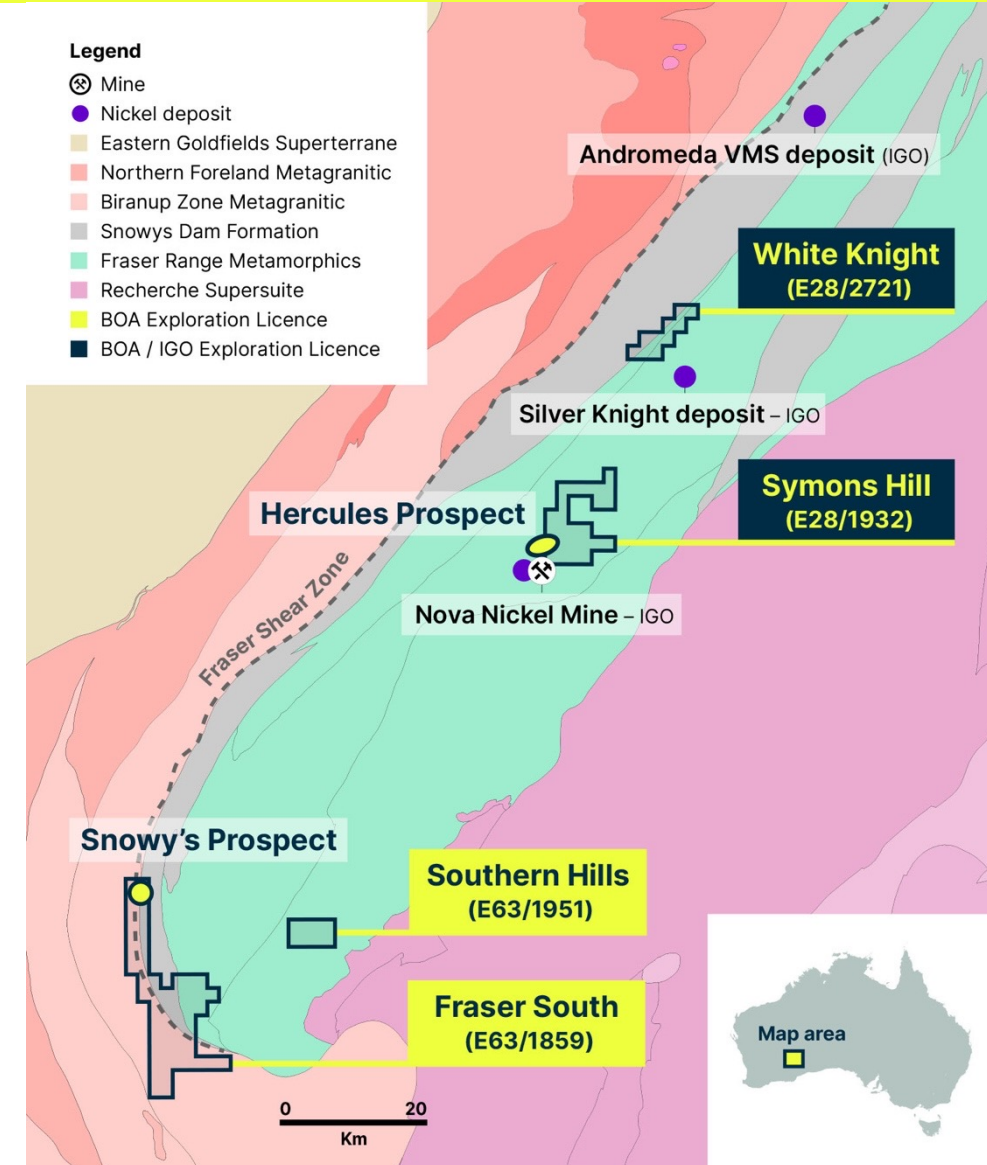
BOA drilling Snowys Prospect in 2024



Fraser South: Snowys Prospect

Ni

- EM survey at Fraser South identified a highly conductive anomaly: Snowy's Prospect
- Massive sulphides in mafic and ultramafic intrusions in the Fraser Range are the host rocks for Ni, Zn, Cu and Co mineralisation which are highly conductive
- Potential for Nova (Ni-Cu-Co) or Andromeda (Ni-Zn) style Volcanogenic Massive Sulphides (VMS) mineralisation systems at Snowys
- The anomaly is easily drilled with an estimated depth of 170m
- Heritage agreement signed and CMP submitted for approval
- **Drilling planned for Q3 2024**



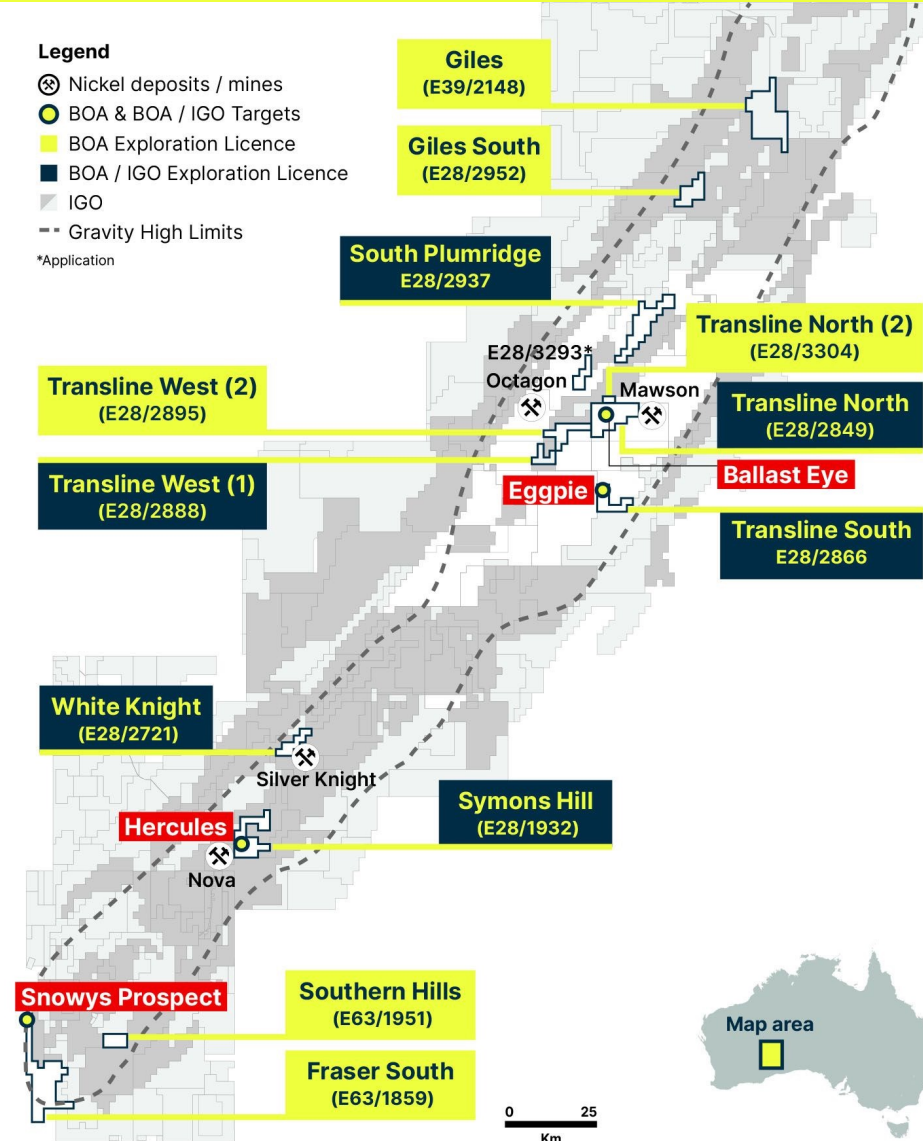
Positive results on IGO operated tenements

Eggpie and Ballast Eye Prospects

- IGO drilling completed 2023 and 2022¹
- Assays indicate medium to high prospectivity for Nova style Ni-Cu-Co host rocks
- EM program proposed to define mineralisation

Hercules

- Adjacent to the Nova-Bollinger mining lease
- Hercules (and Orion and Elara) mafic and ultramafic intrusions identified from EM and 3D seismic data acquired over the Nova ML
- These intrusions have potential to host Nova style mineralisation and extend into BOA's Symons Hill tenement



Sulphides identified from drilling the Eggpie Prospect, late 2023²



Positioned for success in 2024

		Q1	Q2	Q3	Q4	
Li	Two Tanks	Site preparation	Drill	Drilling evaluation		
	Cat Camp		Site preparation	Heritage survey	Drill	Drilling evaluation
	Bald Hill East		Site preparation	Heritage survey	Drill	Drilling evaluation
	Ant Hill ¹				Geochemical sampling and studies	
Ni	Fraser South		Heritage survey	Site preparation	Drill	Drilling evaluation
	Transline North ²			Moving Loop Electromagnetic surveys and evaluation		
	Transline South ²			Proposed geophysical surveys and evaluation		
	Symons Hill ²					
	Other	Regional evaluation and assessment				
Other	Paterson Region	Regional evaluation and seek partner				
	Tasmania	Geochemical sampling follow up study				

1. Granted, awaiting final award

2. Program timing to be determined by IGO

What makes BOA the Belle of Australia



Positioned for success

- Proven geological provinces housing world class mineral deposits
- Agreement with IGO to fund Ni exploration in Fraser Range
- **Fully funded drilling program under way**



Executing our strategy

- Focused on exploration and discovery of Li and Ni in WA
- Board with track record in capital markets, exploration, discovery and delivering shareholder value
- 76% of BOA 2024 planned expenditure ‘in ground’

Disclaimer

Forward Looking Statements

This presentation is not an offer for financial products in any jurisdiction or a financial product recommendation. The information in this presentation is an overview and does not contain all information necessary for investment decisions. In making investment decisions in connection with any acquisition of financial products, investors should rely on their own examination of Boadicea Resources Ltd (“Boadicea”, “BOA” or the “Company”) and consult with their own legal, tax, business and/or financial advisers.

The information contained in this presentation has been prepared in good faith by the Company. However, no representation or warranty expressed or implied is made as to the accuracy, correctness, completeness or adequacy of any statements, estimates, opinions or other information contained in this presentation. To the maximum extent permitted by law, Boadicea, its directors, officers, employees and agents disclaim liability for any loss or damage which may be suffered by any person through the use or reliance on anything contained in or omitted in this presentation.

Certain information in this presentation refers to the intentions of Boadicea, but these are not intended to be forecasts, forward looking statements or statements about future matters for the purposes of the Corporations Act or any other applicable law. The occurrence of events in the future are subject to risks, uncertainties and other factors that may cause the Company’s actual results, performance or achievements to differ from those referred to in this presentation. Accordingly, Boadicea, its directors, officers, employees and agents do not give any assurance or guarantee that the occurrence of the events referred to in this presentation will occur as contemplated.

Competent Persons Statements

The information in this presentation that relates to Exploration Results for the Western Australian based projects was compiled by Graeme Purcell. Graeme Purcell is a member of the Australian Institute of Geoscientists and is a part time consultant and non-executive director to Boadicea. Graeme Purcell has sufficient experience which is relevant to the style of mineralisation and type of deposit under consideration and to the activity being undertaken to qualify as a Competent Person as defined in the 2012 Edition of the ‘Australasian Code for Reporting of Exploration Results, Minerals Resources and Ore Reserves’. Graeme Purcell consents to the inclusion in the Report of the matters based on the information in the form and context in which it appears.

The information in this presentation that relates to Geophysical Results is based on information compiled by Karen Gilgallon, Principal Geophysicist at Southern Geoscience Consultants. Karen Gilgallon is a Member of the Australasian Institute of Geoscientists (AIG) and has sufficient experience which is relevant to the style of mineralisation and type of deposit under consideration and to the activity which he is undertaking to qualify as a Competent Person as defined in the 2012 Edition of the ‘Australasian Code for Reporting of Exploration Results, Mineral Resources and Ore Reserves’. Karen Gilgallon consents to the inclusion in the release of the matters based on this information in the form and context in which it appears.

Contact us

Cath Norman

Chair, Managing Director
+61 407 087 176

info@boaresources.com
boaresources.com

Yolanda Torrisi

Investor Relations
+61 412 261 870



RIU
Sydney
Resources
Round-up

Booth #53

BOA Resources