



Exploring for Tier 1 Gold, Copper and Lithium Deposits in Western Australia

Corporate Presentation May 2024

A wide-angle photograph of a vast, flat desert landscape under a clear sky. The sun is low on the horizon to the right, creating a bright orange and yellow glow that transitions into a pale blue sky. The ground is dark and textured, with some sparse, low-lying vegetation. The horizon line is straight and extends across the entire width of the image.

Artemis Resources acknowledges and pays respect to the Traditional Owner groups upon whose lands we operate.

We recognise the unique cultural heritage of Aboriginal people and their continued connection to lands, waters and communities.

We pay our respects to all Aboriginal people, and to Elders past, present and emerging.

BOARD & MANAGEMENT

Highly experienced leadership team with broad cross section of technical and commercial skills across the resources sector



GUY ROBERTSON
Executive Chairman

30 years of experience as a Director, CFO and Company Secretary of both ASX-listed and private companies in Australian and Hong Kong. Currently Executive Director of Hastings Technology (ASX:HAS) and Metalbank (ASX:MBK)



GEORGE VENTOURAS
Executive Director

More than 30 years of business, marketing and corporate experience including restructuring and recapitalising publicly listed entities and coordinating IPOs. Previously on the board and General Manager of Apollo Consolidated Ltd, subject of ~\$180m takeover by Ramelius Resources.



Vivienne Powe
Non-Executive Director

Metallurgical engineer with over 30 years industry experience including senior executive roles with a strong track record of creating shareholder value in top tier, global mining, mining services and oil & gas companies. Currently Senior Executive Lynas Rare Earths Ltd (ASX:LYC)



Liz Henson
Non-Executive Director

International lawyer with over 35 years of global experience in corporate governance, business and professional services.

Ms Henson was a Senior Partner at PwC based in London between 2007 and 2019 Ms Henson is currently a Non-Executive Director of Alien Metals Plc (LSE: UFO).



Bruce Hooper
Consulting Geologist

Mr Hooper is a mining executive with extensive resources industry experience spanning the base metal, precious metal and energy sectors in Australia, Asia, the Americas and Africa. Most recently, he was the Chief Exploration & Business Development Officer at Sandfire Resources Ltd (ASX: SFR). Bruce worked in several senior exploration, operational and business development roles for a variety of companies including British Petroleum, Rio Tinto Limited, North Limited, Straits Resources Limited, Perilya Ltd, Ivernica Inc. along with both private and public board roles.



COMPANY SNAPSHOT

MARKET CAP

A~\$27m*

ISSUED SHARES

~1,690m*

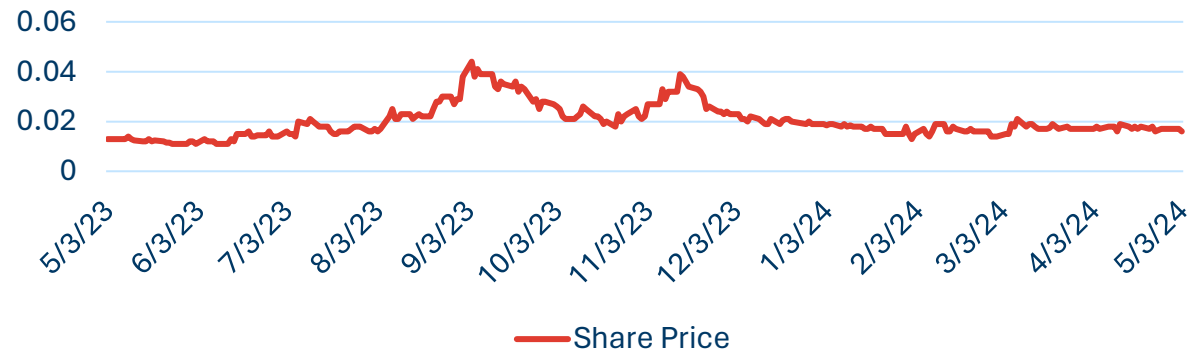
SHARE PRICE

A\$0.016* (7 May 2024)

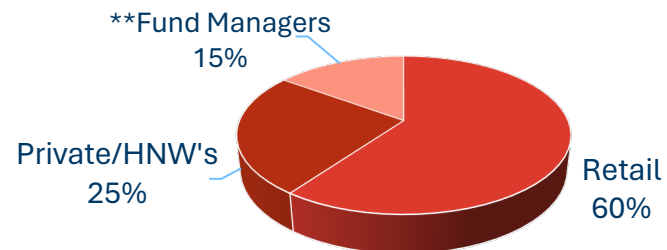
INVESTMENTS

ASX:GRE - 6.75m (8.12%)

Share Price



Shareholders



*Capital Raise in progress

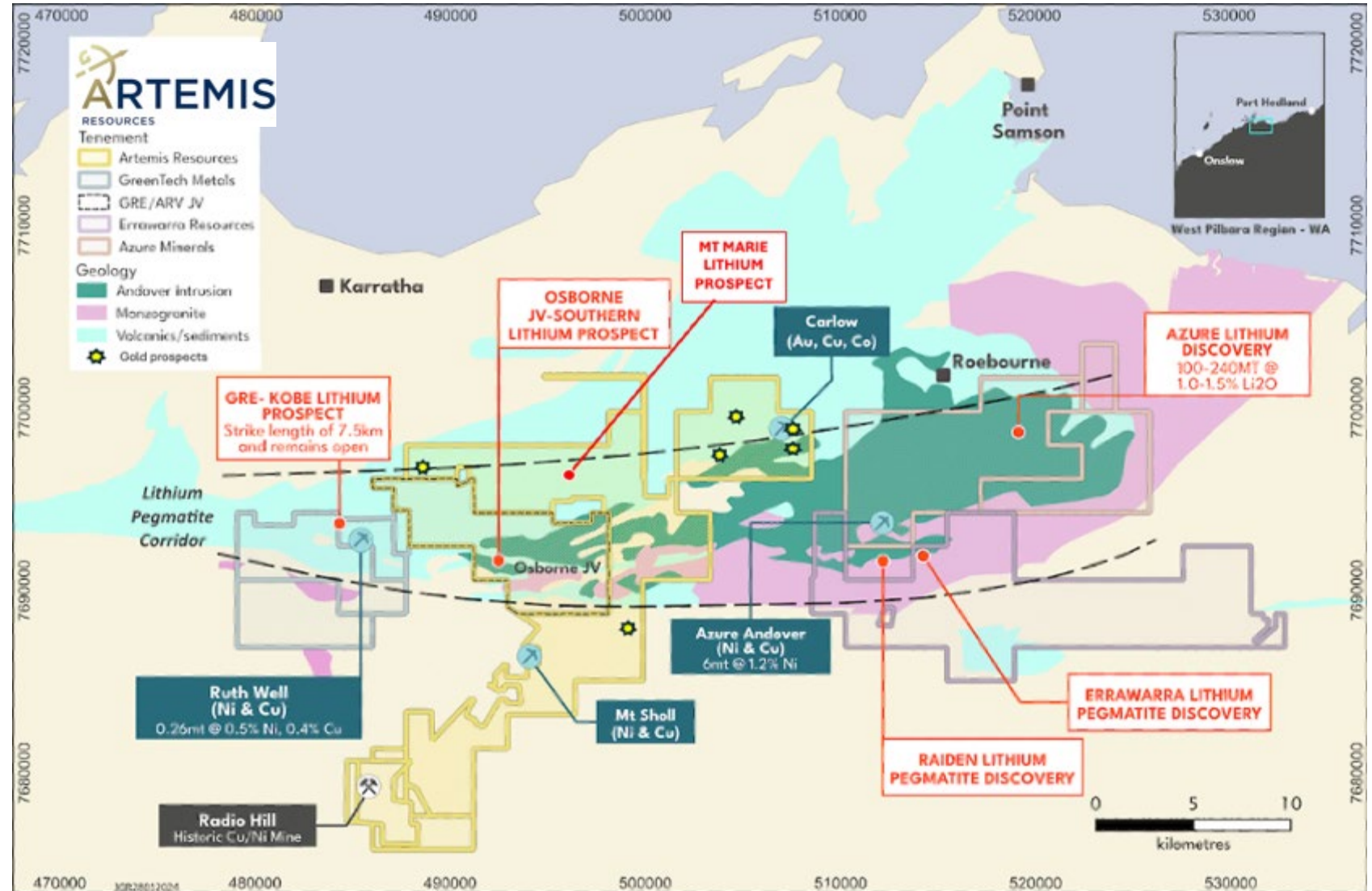
**Jupiter Asset Management -8% ; Other Fund Managers - 7%



OVERVIEW

WEST PILBARA PORTFOLIO

- Dominant landholding (+200km²) in an emerging Tier 1 commodity hub
- Close to Karratha - a logistics / administrative centre and Dampier port - only 2 hours flight from Perth.
- Multiple commodities provide exposure to battery and precious metals markets
- Existing high grade gold mineral resource estimate on 100% owned tenure
- High grade lithium discovery on 100% tenure and JV tenement
- Radio Hill processing plant with tailings dams, water and power. Fully permitted and licensed
- New style of mineralization in the West Pilbara that has the potential to deliver multi-million ounce deposits
- The Company is in early discussions regarding potential joint ventures in relation to certain tenements and projects**



**As at the date of this presentation, discussions are at an early stage and there is no certainty on any potential commercial terms/agreement.

Until material commercial terms have been agreed with any relevant parties, there can be no guarantee any such discussions will lead to an announcement or completion of a binding agreement.

GOLD PRICES REACH RECORD HIGHS

All Data Gold Price in USD/oz

High: 2389.98 Low: 63.90 ▲2237.50 3447.60%

Last Close: 2302.40



goldprice.org

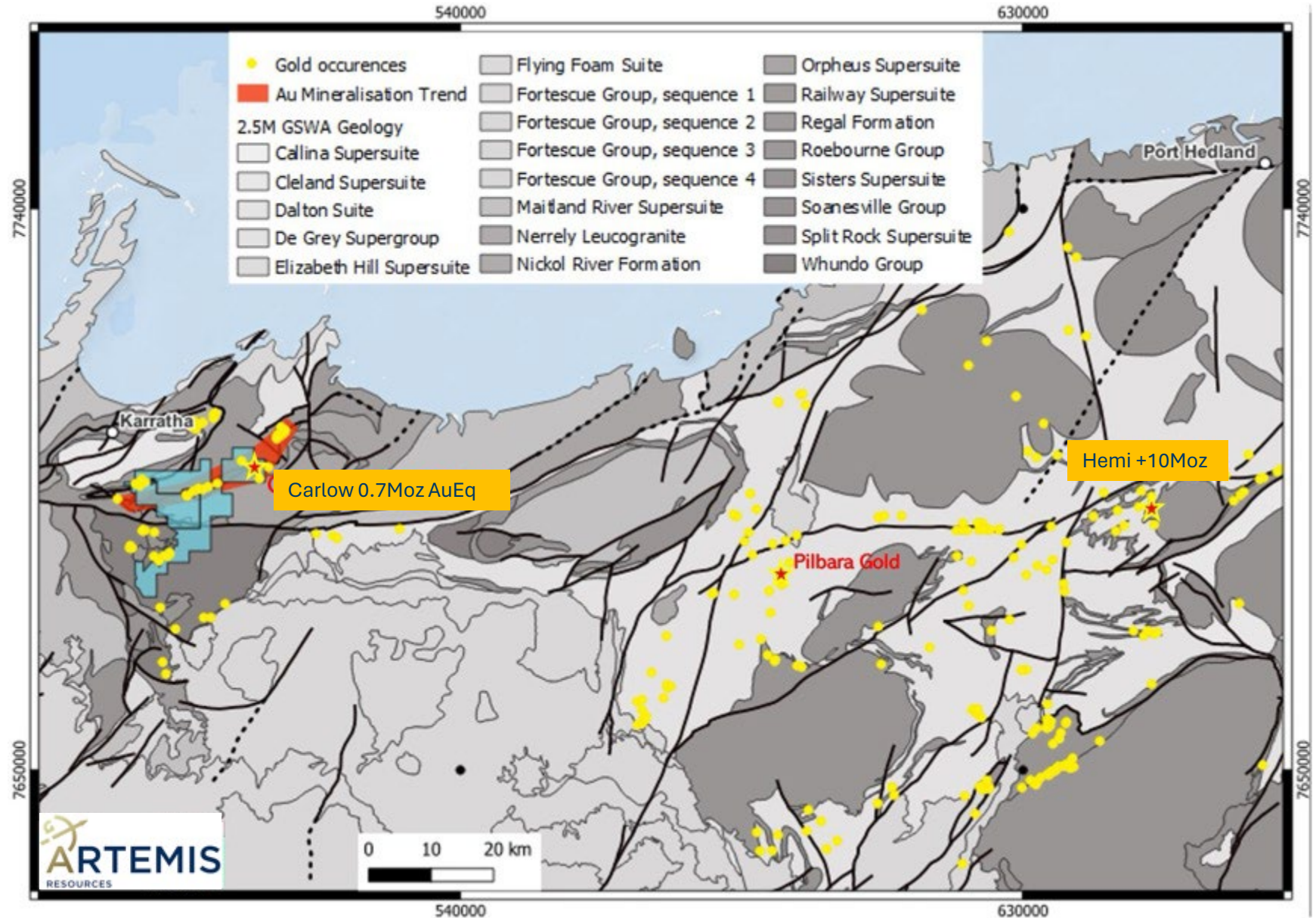
Monday, May 6, 2024

HIGH GRADE GOLD EXPLORATION POTENTIAL

KARRATHA GOLD PROJECT

Exploring for multi-million ounce deposits in the West Pilbara

- Artemis 100% owned tenements cover more than **200km²** of prospective West Pilbara tenure, including 100% gold rights on the Osborne JV tenement
- Multiple prospects in addition to JORC compliant **704Koz AuEq resource** at Carlow plus 200-500k oz Carlow exploration target

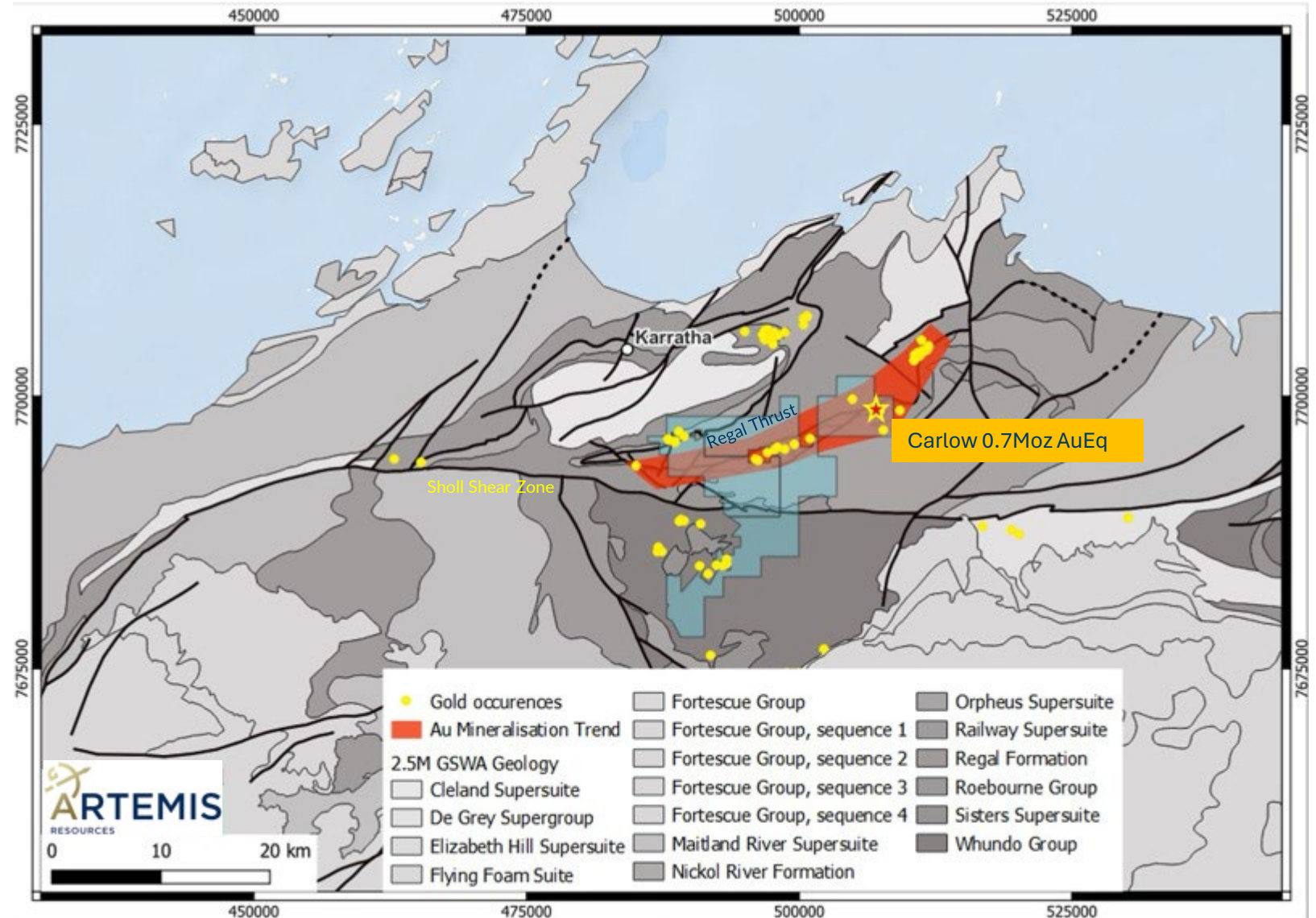


HIGH GRADE GOLD EXPLORATION POTENTIAL

KARRATHA GOLD PROJECT

Exploring for multi-million ounce deposits in the West Pilbara

- **Sholl shear zone** - Represents a major structural break, which has the opportunity to be “mantle tapping” to source ore rich fluids from deep within the crust. Repeated activation also indicates that there is opportunity for more than 1 mineralisation event
- **Regal Thrust** - Potential for multiple mineralisation events
- Gold mineralisation already discovered along the contact/proximal to the fault/shear zone



CARLOW GOLD PROJECT

High-grade Au-Cu-Co resource with significant upside potential in a Tier 1 mining jurisdiction strategically located close to existing infrastructure

HIGH-GRADE RESOURCE FOUNDATION

- High-grade Carlow Castle foundation resource of 704,000 oz at 2.5g/t AuEq¹
- Genuine multi-commodity precious and battery metals deposit
- 83% open pit with underground potential

SIGNIFICANT EXPLORATION UPSIDE

- Rapid assessment program underway to define new mineralisation around existing resource
- Exploration target of 2.5-5.0Mt at 2.5g/t AuEq to 3.1g/t AuEq for 200,000-500,000 oz AuEq²
- Multiple growth targets including Lulu Creek, Europa, Marillion and Titan

RESOURCE GROWTH POTENTIAL

- Resource remains open at depth in both the western zone and Carlow deeps / Carlow keel zone
- Resource area open in multiple lateral directions
- Further growth potential at Carlow North and other untested targets

STRATEGIC LOCATION

- Located only 22km east of Karratha and 9km west of Roebourne
- Nearby air, sea and land transport infrastructure all in place
- Two high voltage transmission lines cross the license area

ACCESS TO INFRASTRUCTURE

- 100% owned Radio Hill plant significantly reduces capital and lead time to begin production
- Approved for gold production with options for other ore processing
- Currently on care & maintenance

¹ Refer to Appendix for further information.

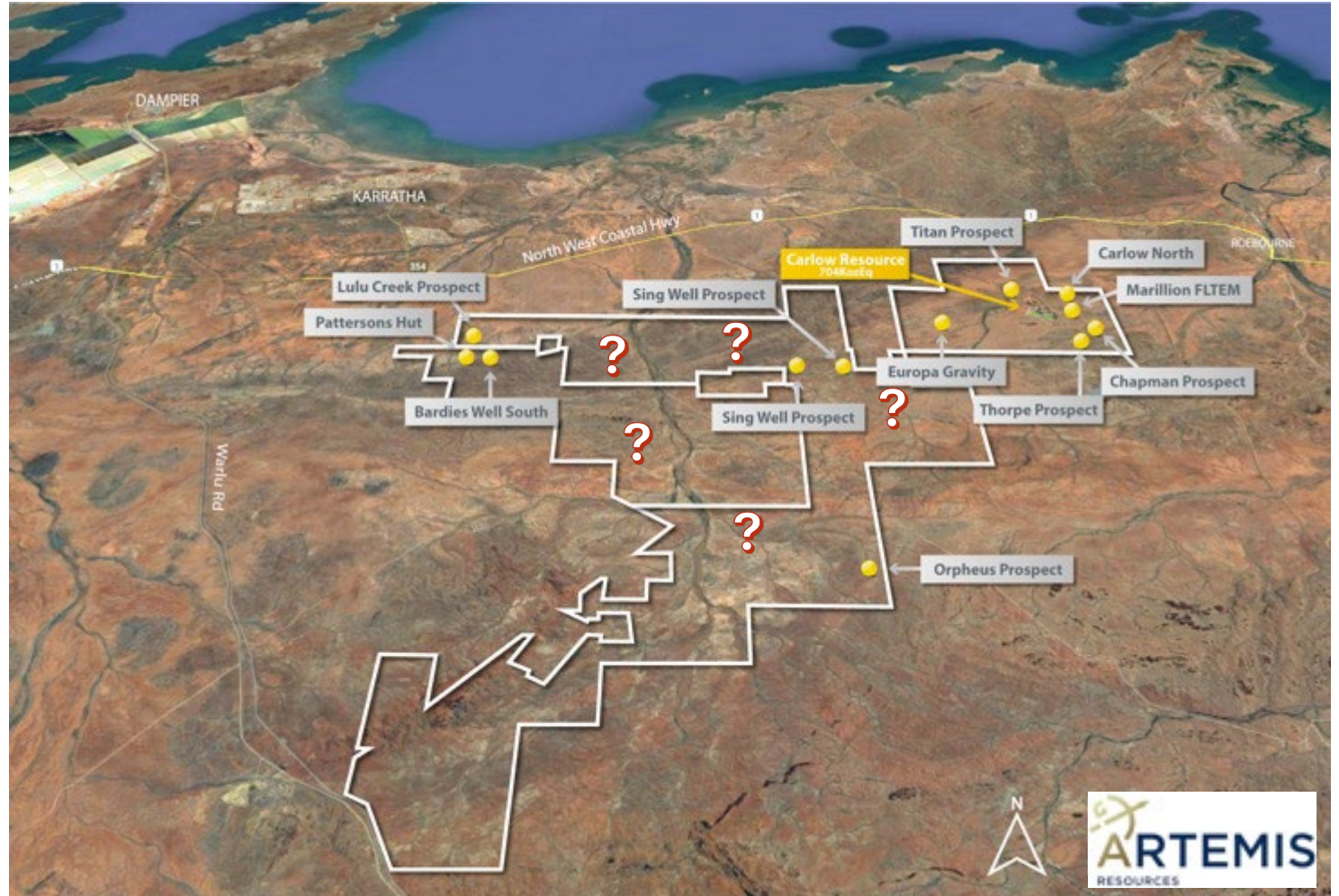
² Refer to ASX Announcement dated 9 May 2023.



KARRATHA GOLD PROJECT

EXPLORATION POTENTIAL

- Multiple tenements
- Multiple prospects
- Considerable regional upside
- Prospects are situated along significant geological faults, shears and thrusts which have shown to contain substantial resources
- Further prospective locations between known prospects
- Wide mineralized structural corridor with high potential for discovery and resource growth



CARLOW EXPLORATION POTENTIAL

KARRATHA GOLD PROJECT

Carlow North

Anomaly identified north of Carlow, elevated copper in soils

Titan

Elevated gold in soils with assay results up to 101.3 ppb Au¹

Marillion

Very high tenor (>11,000s) FLEM 500m by 350m anomaly

Potential continuation of Carlow Keel, or an entirely new discovery

Europa

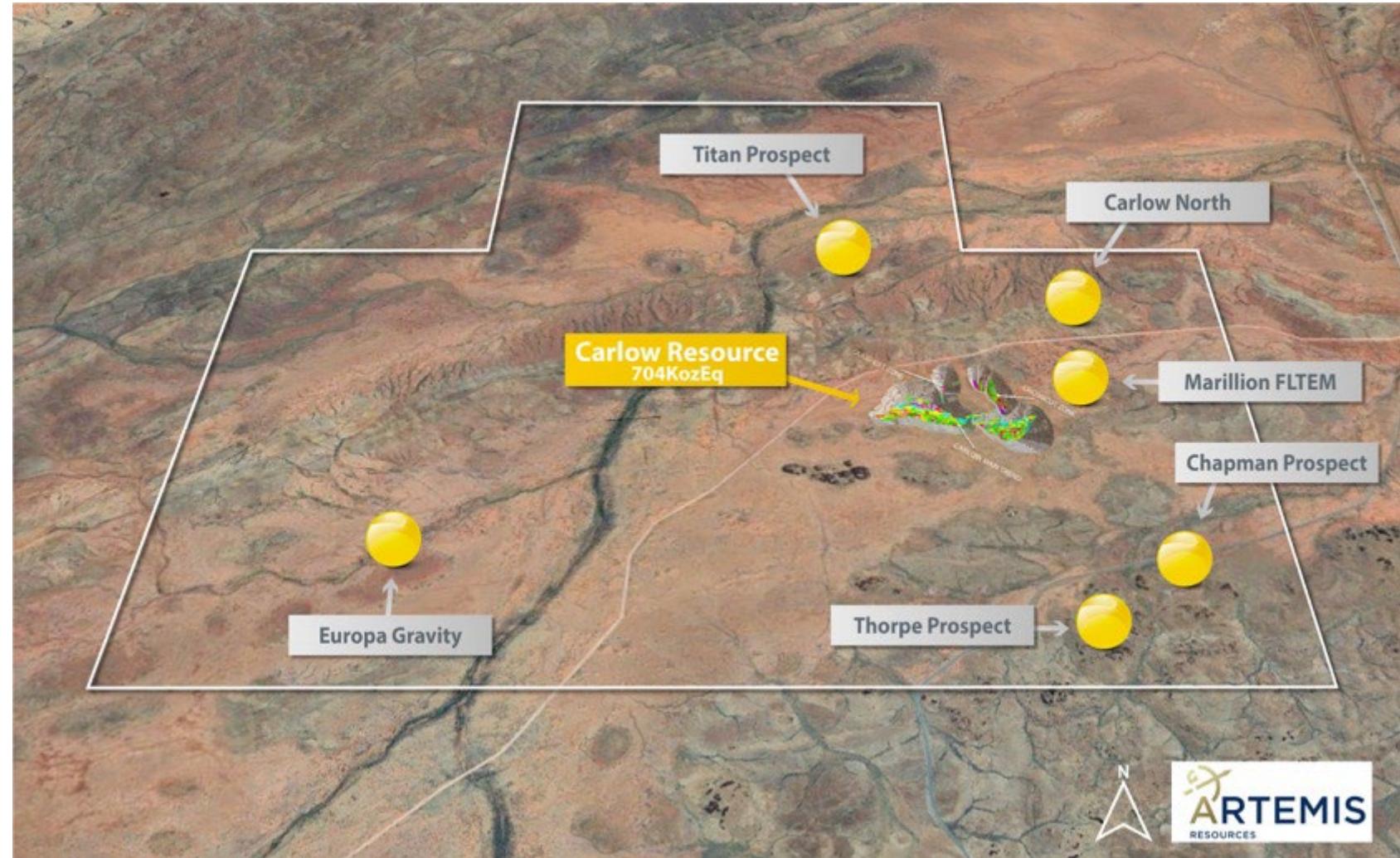
Coincident gravity and magnetic target

Chapman

Wildcat hole hits 10m @ 3.4% Cu, 1.75 g/t Au & 24.65 g/t Ag, from 116m, incl 5m @ 6.23% Cu, 3.01 g/t Au, 45.32 g/t Ag from 117m

Thorpe

Thought to be a structural repeat of the Carlow host-sequence. Ultrafine soil sampling defines regional structures & appears coincident with a regional magnetic trend.



1 Refer to ASX Announcement dated 4 April 2023.
2 Refer to ASX Announcement dated 6 December 2021

HIGH GRADE RESOURCE WITH SIGNIFICANT GROWTH POTENTIAL

CARLOW PROJECT

Au-Cu-Co resource with significant upside potential in a Tier 1 mining jurisdiction

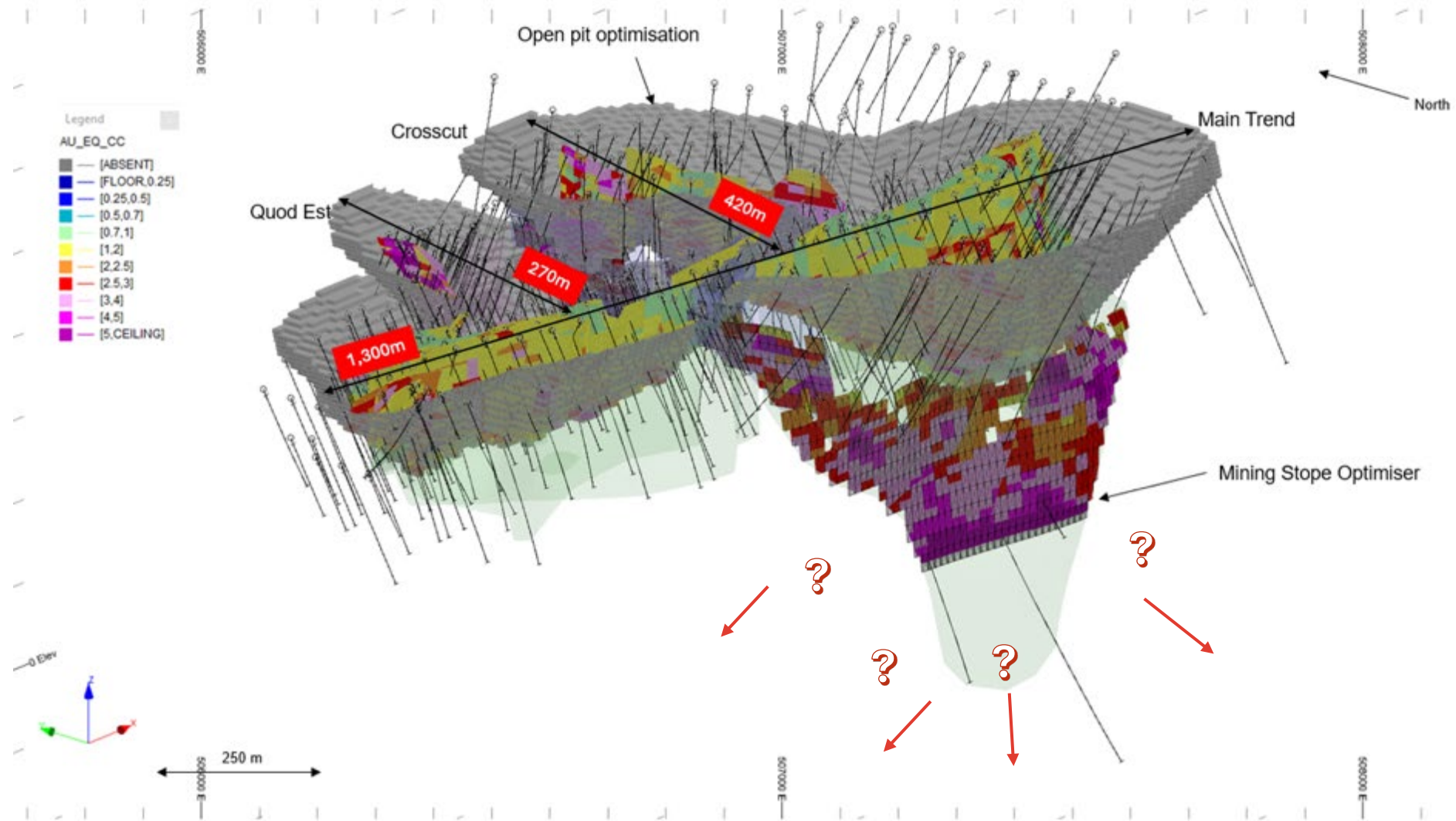
Total inferred Mineral Resource¹ of 8.74Mt at 2.5g/t for 704,000 oz AuEq*

Resource remains open laterally

Resource area open in multiple lateral directions including the Western / Quod Est zones, Crosscut zone and the Main trend to the east and west

Carlow exploration target

2.5-5.0Mt at 2.5g/t AuEq to 3.1g/t AuEq for 200,000-500,000 oz AuEq²



¹ Refer to Appendix for further information

² Refer to ASX Announcement dated 9 May 2023

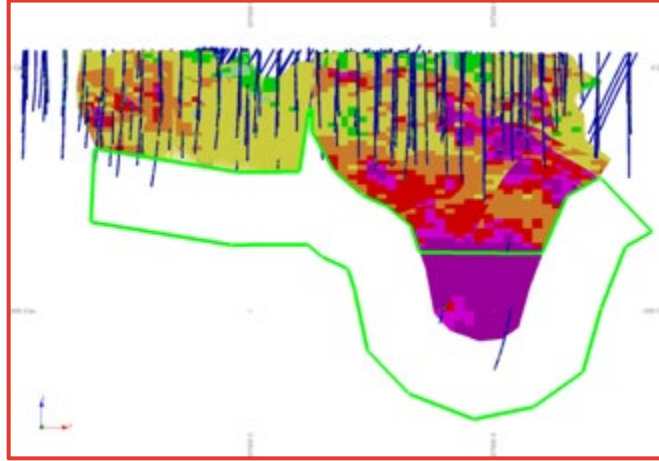
*Open pit resource of 7.25Mt @ 2.4g/t AuEq for 557,000 oz AuEq (using a 0.7g/t AuEq cut-off grade) & Underground resource of 1.49Mt @ 3.1g/t AuEq for 146,000 oz AuEq (using a 2g/t AuEq cut-off grade)

EXPLORATION POTENTIAL

CARLOW PROJECT

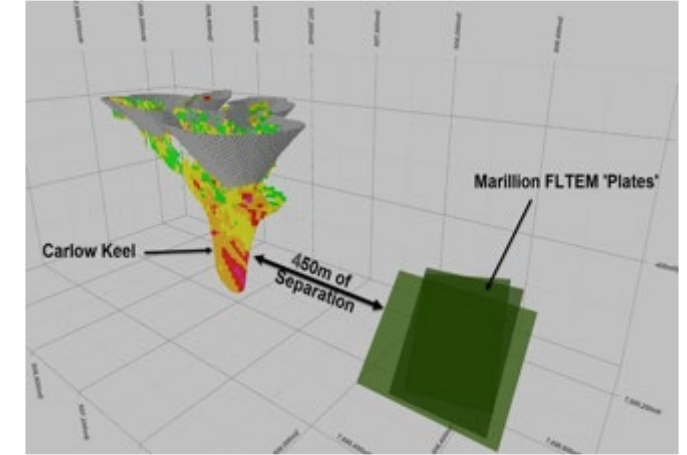
1. Exploration Target

Exploration Target of 2.5-5.0Mt at 2.5g/t AuEq to 3.1g/t AuEq for 200,000-500,000 oz AuEq¹



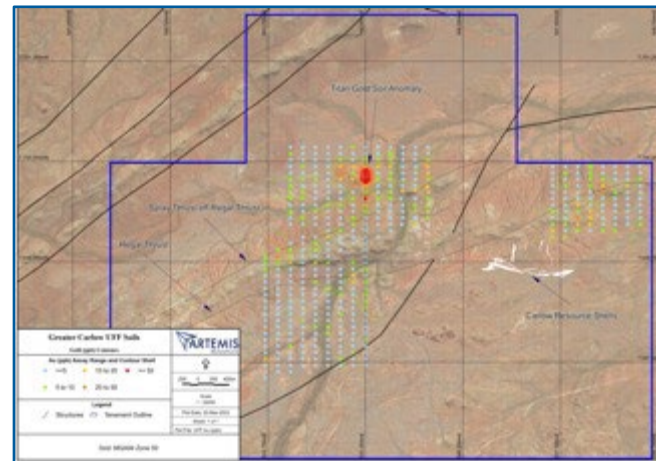
2. Marillion

Very high tenor (>11,000s) FLEM
500m by 350m anomaly
Potential continuation of Carlow Keel, or an entirely new discovery



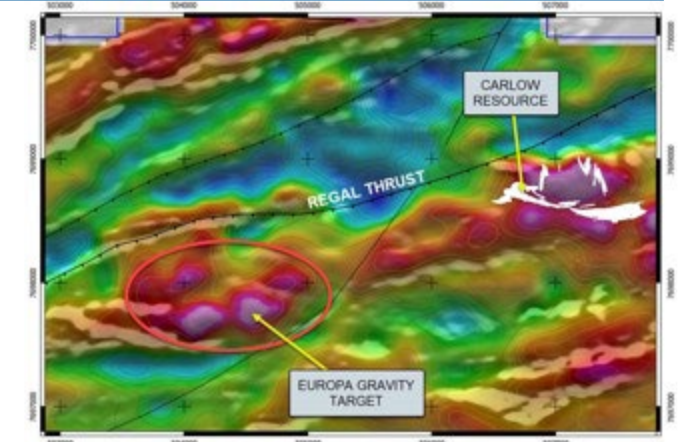
3. Titan

Elevated gold in soils with assay results up to 101.3 ppb Au²



4. Europa

Coincident gravity and magnetic target
Located ~3km to the southwest of the Carlow Resource area



1 Refer to ASX Announcement dated 9 May 2023.
2 Refer to ASX Announcement dated 4 April 2023.

SILICA HILLS EXPLORATION POTENTIAL

KARRATHA GOLD PROJECT

Lulu Creek

- Lulu Creek is situated 18km west of Carlow Castle on the north limb of the Regal Thrust within E47/1746.
- The project was identified through soil and rock chip sampling with gold in veins assaying up to 11.4 g/t Au.

Sing Six

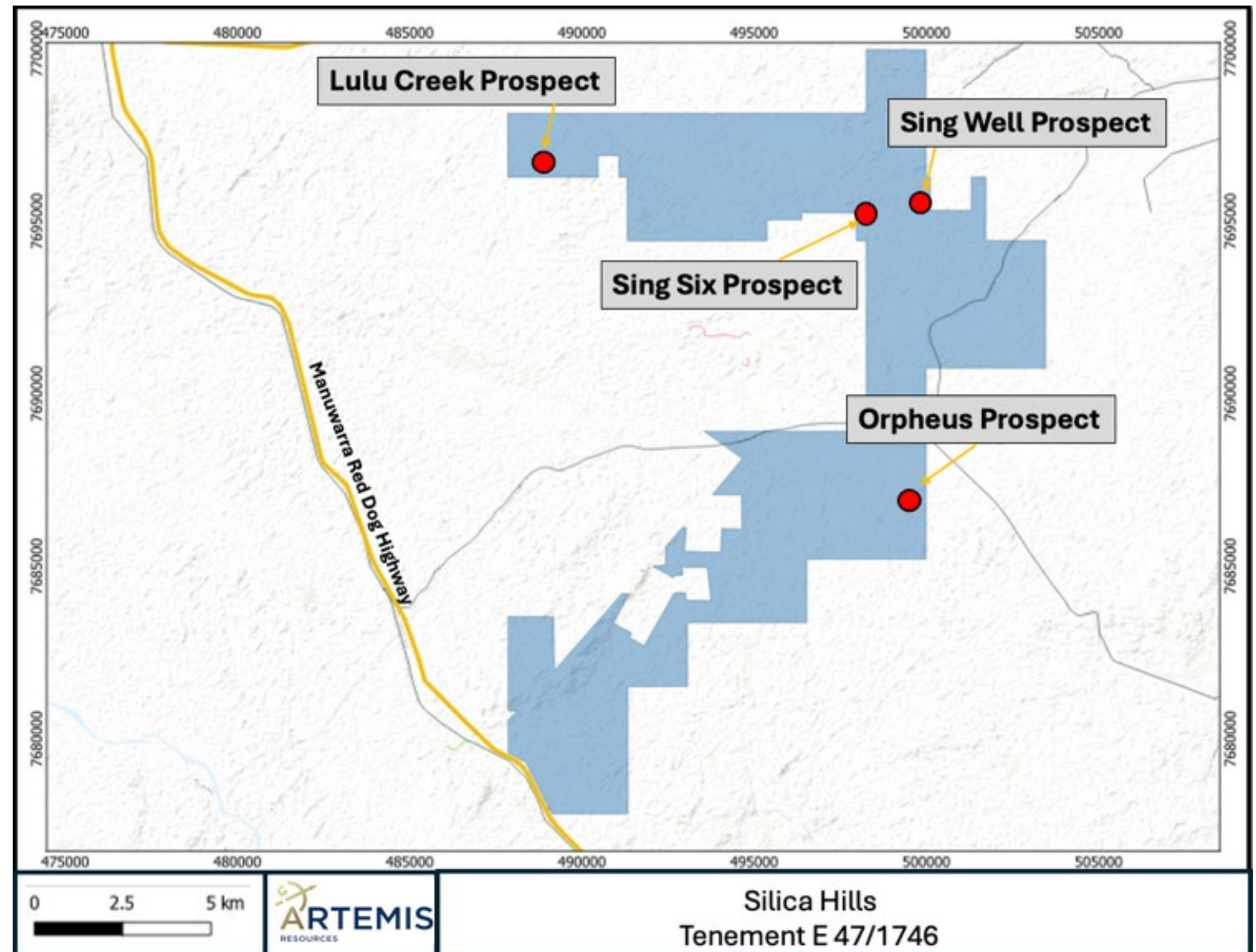
- Artemis drilled 14 Aircore holes in 2020 for 376m.
- Best drill result was 2m @ 0.97 g/t Au from 9m (SSRC007)

Sing Well

- Historic workings producing an average grade of 2.5 g/t Au
- Gold grains found in rock chip samples

Orpheus

- Anomalous rock chips returned 23 g/t Au, 8,600 g/t Ag, 7% Cu and 6.9% Zn

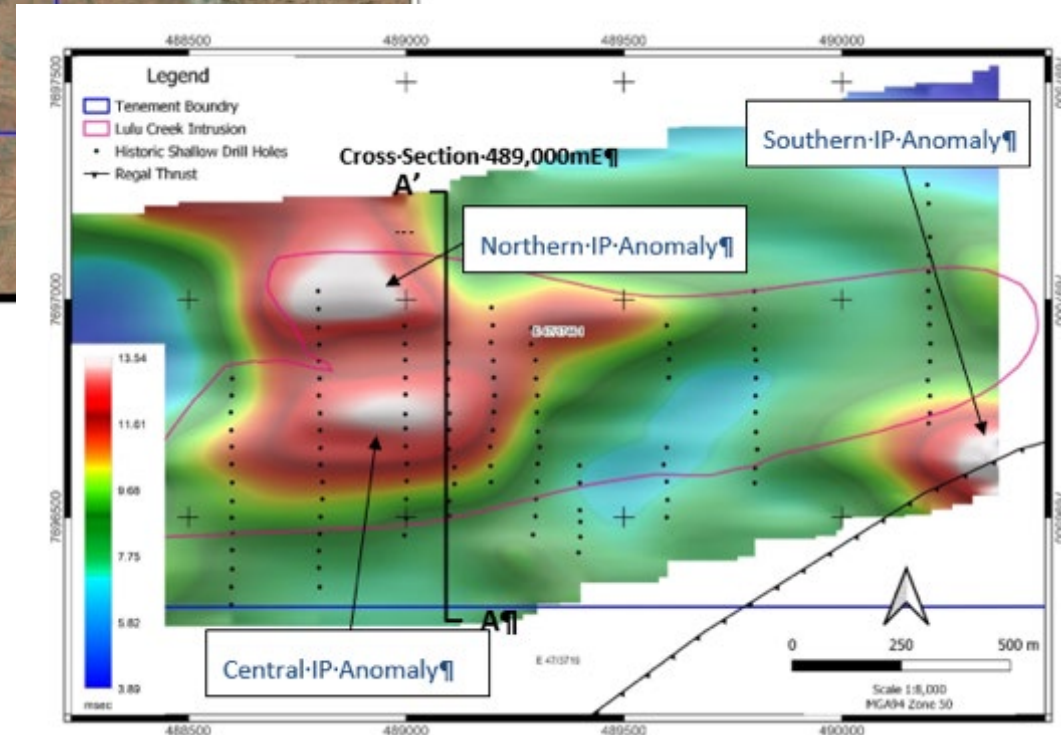
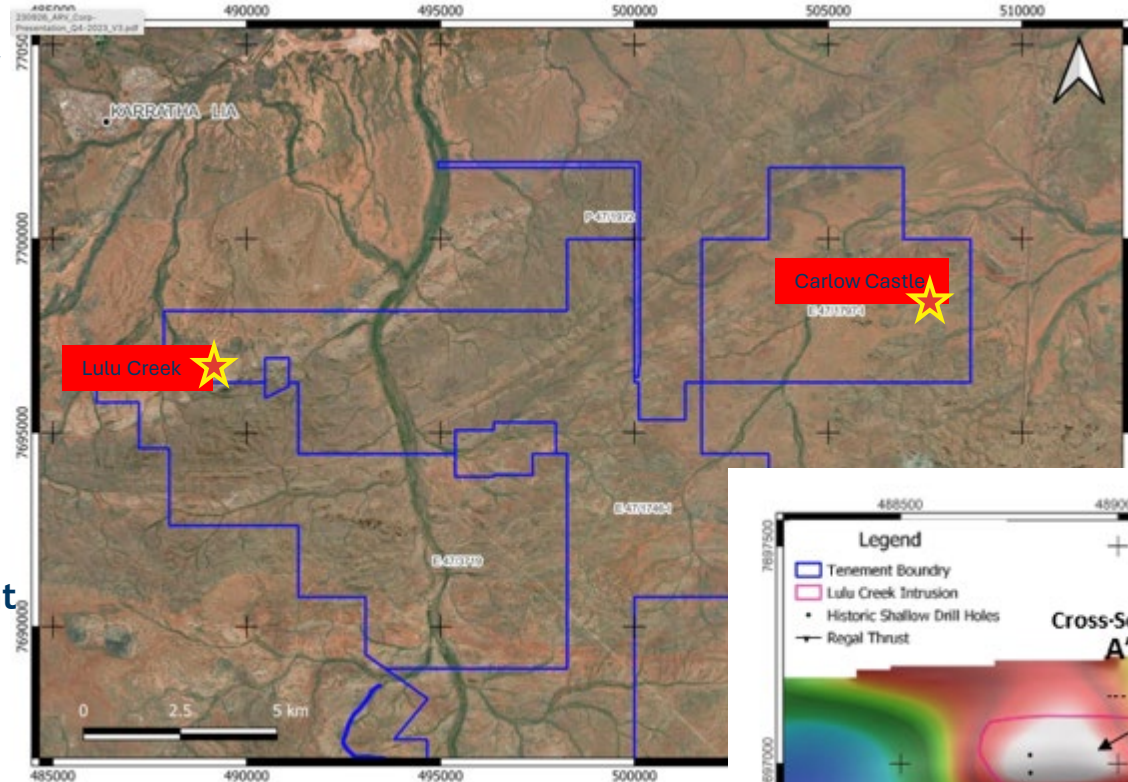


1 Refer to ASX Announcement dated 5 November 2018
2 Refer to ASX Announcement dated 18 September 2020.

LULU CREEK GOLD

KARRATHA GOLD PROJECT

- Lies 20km to the west of Artemis' Carlow Castle deposit
- Previous drill results included:
 - ✓ 1m @ 4.89 g/t Au and 13.7 g/t Ag from 24m in CWRC011
 - ✓ 1m @ 1.15 g/t Au from 9m in CWRC017¹
- Drilling to date has been shallow, with a maximum hole depth of only 50m
- Potential for large scale Intrusive Related Gold System (IRGS), reminiscent of De Grey's Hemi project
- Three IP chargeability anomalies detected from a 15-line dipole-dipole survey
- Southern IP chargeability anomaly is interpreted as a shallow body and corresponds with a prominent vein set along the Regal Thrust
- Government Grant received to drill target



¹ Refer to ASX Announcement dated 18 September 2020.

OSBORNE GOLD EXPLORATION POTENTIAL

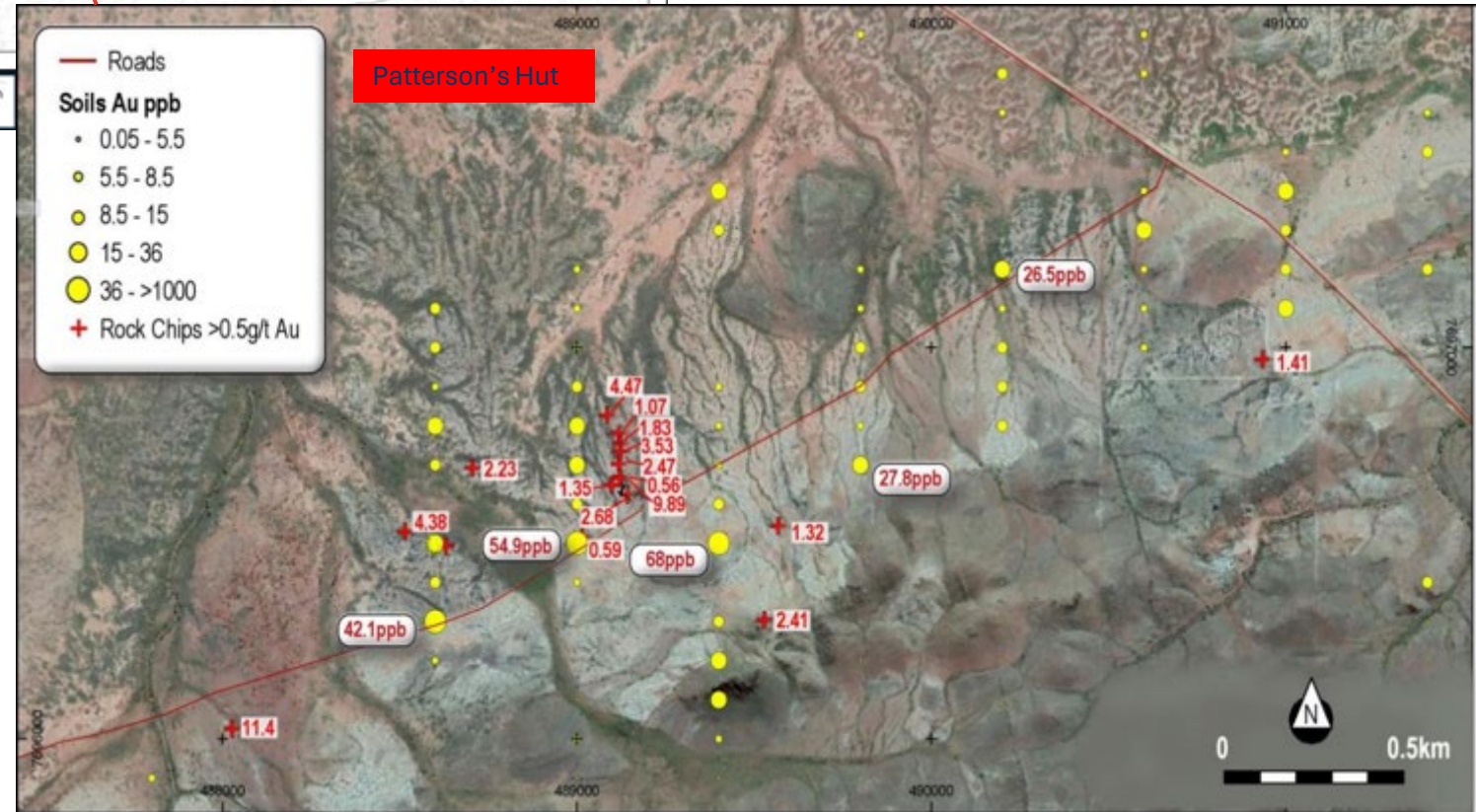
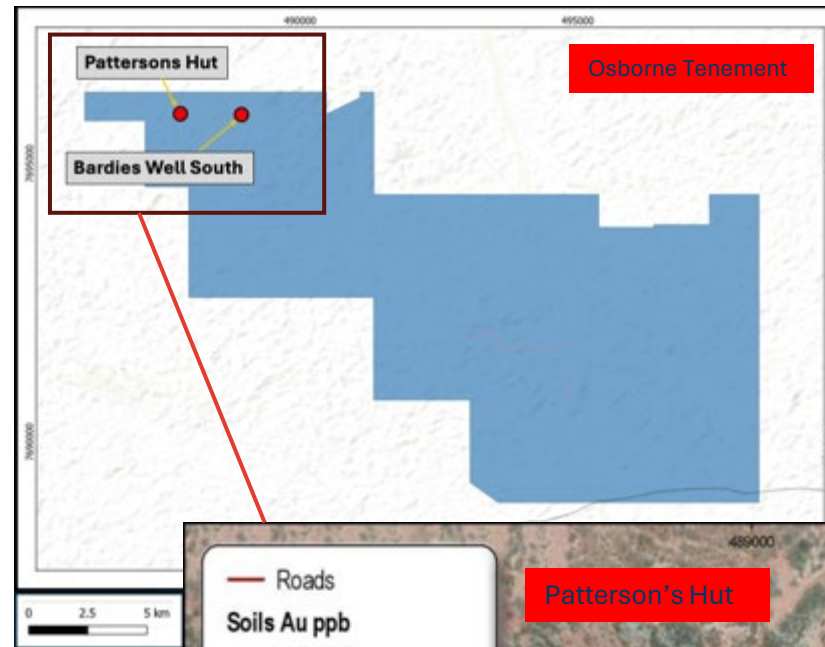
KARRATHA GOLD PROJECT

Patterson's Hut

- Anomalous gold result from gossanous rock chip up to **11.4 g/t Au**
- A discontinuous traverse of 20 rock chip samples over a width of 250m showed 9 samples with responses >1g/t Au to a maximum of **9.89 g/t Au**
- Soil geochemistry shows a continuous anomaly >95th percentile over **4.5km long** with an additional **1.7km** to the West
- Many samples showed a silver to gold ratio of >10:1 possibly indicative of sulphide mineralisation

Bardies Well South

- Anomalous gold in soil sampling results

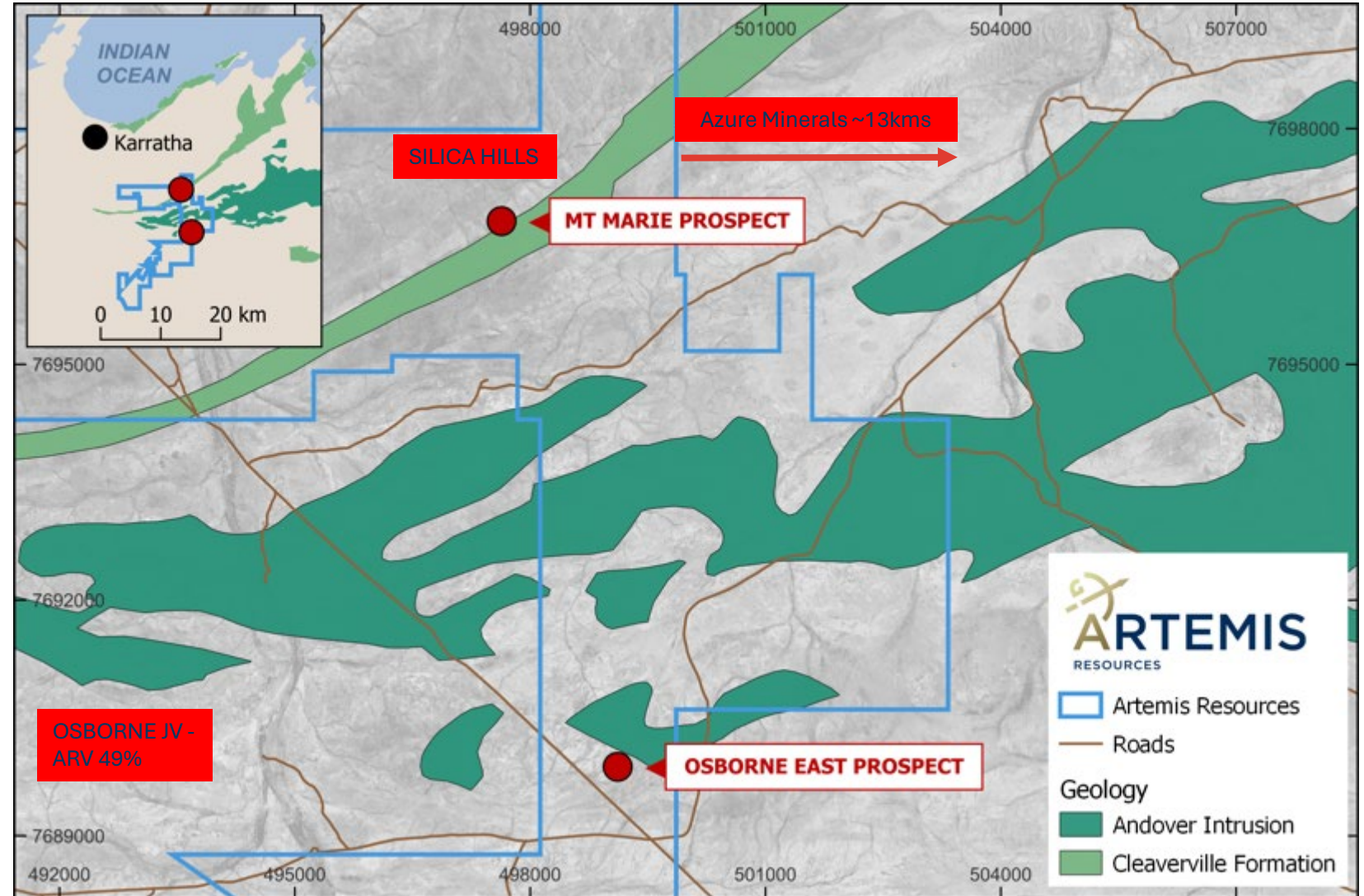


LITHIUM EXPLORATION POTENTIAL

KARRATHA LITHIUM PROJECT

2 fertile lithium zones identified with further growth potential

- Two high grade lithium trends discovered on 100% owned tenements
- Located in close proximity to Andover Lithium Discovery with an exploration target of **100-240 Mt at 1.0-1.5% Li₂O¹** (owned by ASX-listed Azure Minerals, subject to takeover by SQM/Hancock)

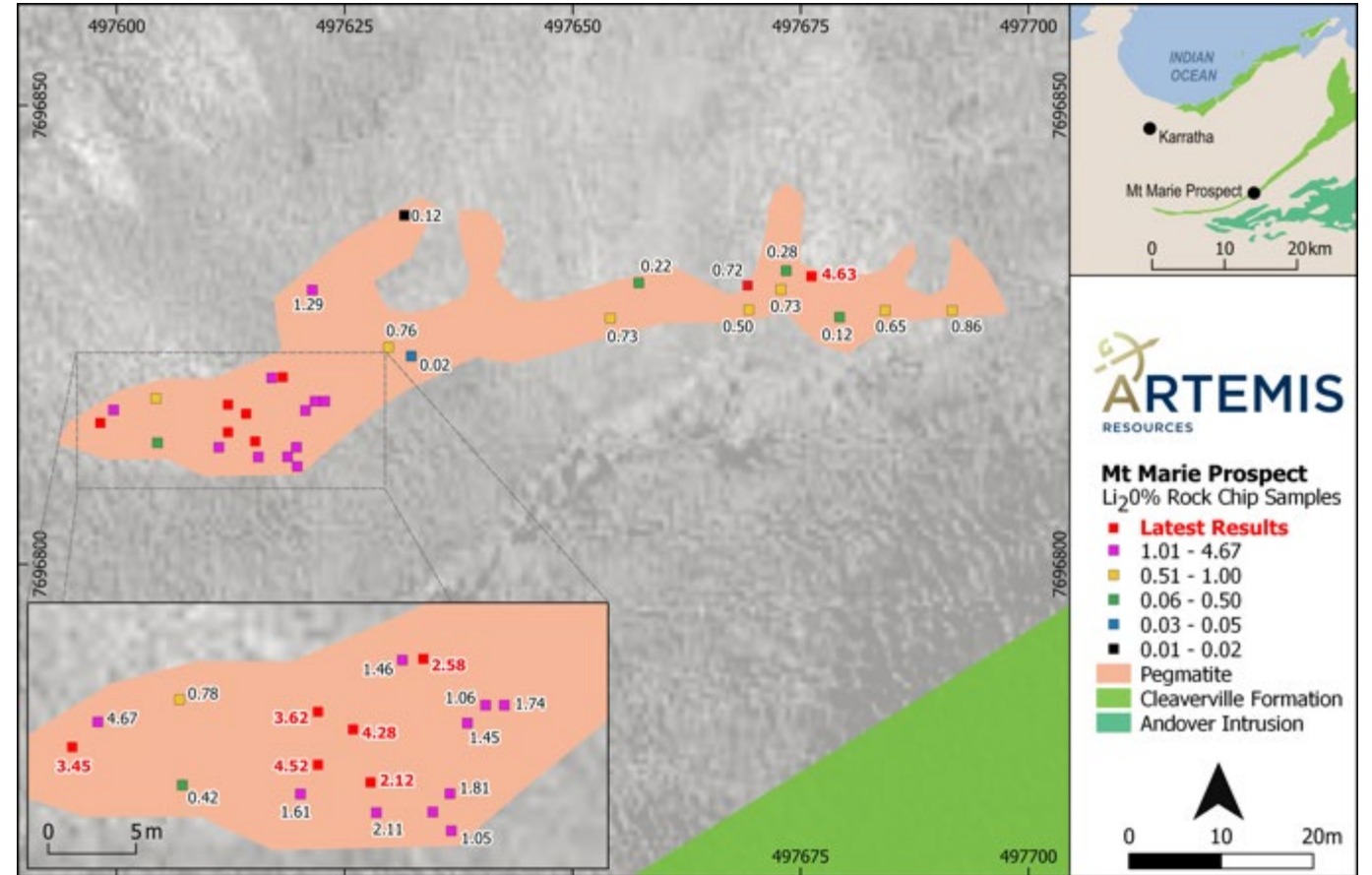


MT MARIE LITHIUM PROSPECT

KARRATHA LITHIUM PROJECT

High-grade lithium discovery on 100% owned tenements in 2024

- Mt Marie Lithium prospect (100% ARV) is situated at the north section of license E47/1746
- Assays have returned up to **4.67% Li_2O^1** pegmatite hosted mineralization; including new results peaking at **4.63% Li_2O^2**
- XRD analysis confirms **spodumene** mineralogy
- **Large, coarse spodumene crystals** highlights prospectivity
- New lithium pegmatite discovery potentially expands the scale of the existing Kobe trend lithium potential within the Karratha project to beyond **20km of combined mineralised strike length**



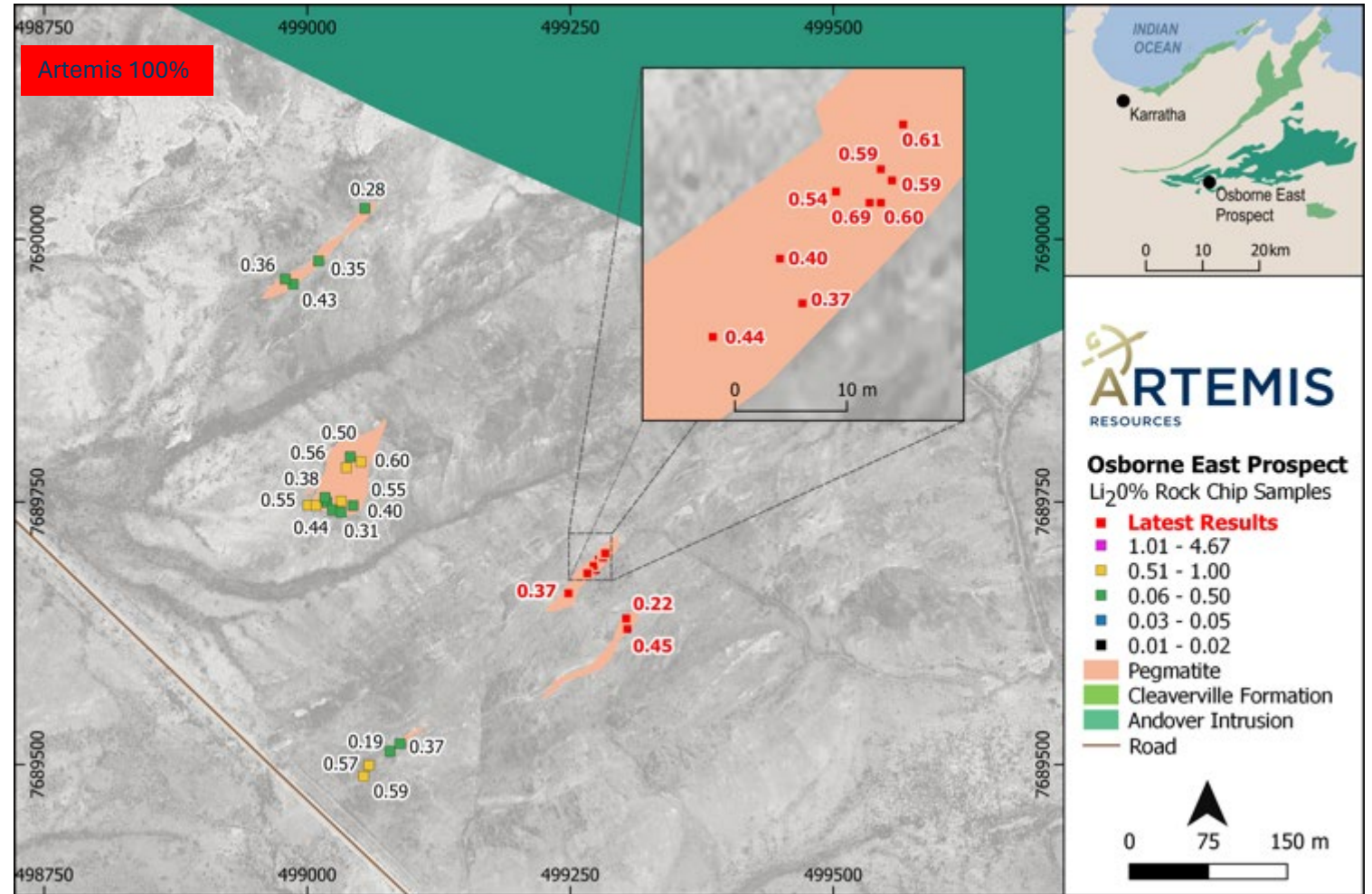
1 Refer to ASX Announcement dated 6 March 2024.
2 Refer to ASX Announcement dated 9 May 2024

OSBORNE EAST LITHIUM PROSPECT

KARRATHA LITHIUM PROJECT

A second lithium discovery on 100% owned tenements

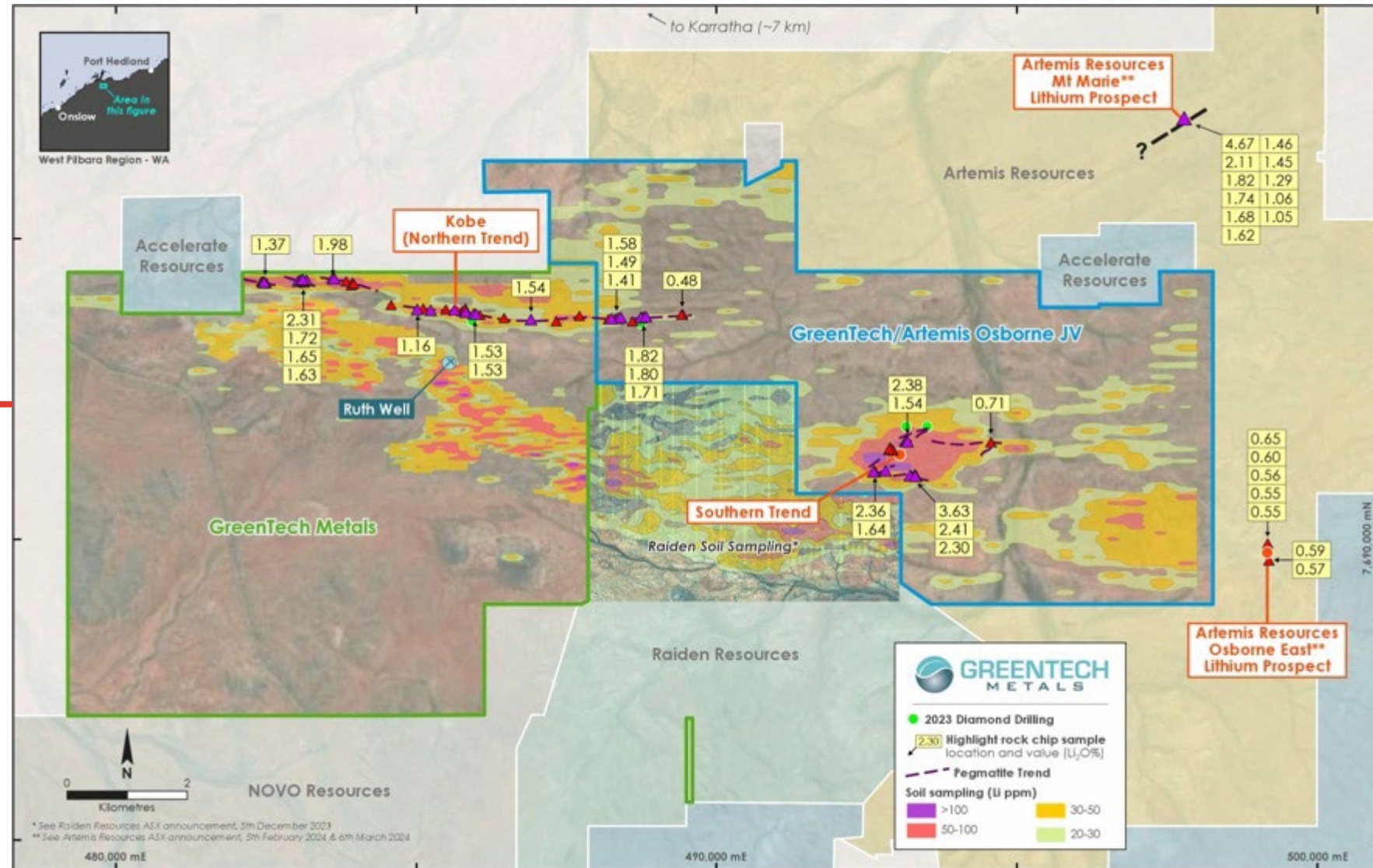
- Osborne East Lithium prospect (100% ARV) is situated towards the centre section of license E47/1746, along strike from the Osborne trends on the Osborne JV tenement (JV with Greentech Metals ASX:GRE)
- Assays have returned multiple rock chips above 0.50% Li₂O¹
- New lithium pegmatite discovery potentially expands the scale of the existing Osborne lithium Southern trend potential within the Karratha project to beyond 6km of combined mineralised length



1 Refer to ASX Announcement dated 9 May 2024

KARRATHA LITHIUM PROJECT

- 7.5km lithium pegmatite trend identified (Kobe Trend) extends eastwards onto the Osborne JV tenement by 1.5km
 - Mineralisation confirmed as spodumene with widths up to 4m
 - Significant rock chip sampling assays recorded along the Southern Trend include:
 - ✓ 1.8% Li₂O (Sample 23GT11-041)
 - ✓ 1.7% Li₂O (Sample 23GT11-042)
 - ✓ 1.6% Li₂O (Sample 23GT06-006)
 - ✓ 1.6% Li₂O (Sample 23GT10-003)¹
-
- 4km lithium pegmatite trend identified (Southern Trend)
 - Mineralisation confirmed as spodumene with widths up to 40m
 - Significant rock chip sampling assays include:
 - 3.63% Li₂O (Sample 23CR038)²
 - 2.4% Li₂O (Sample 23GT20-155)³
 - 2.4% Li₂O (Sample 23GT20-232)³
 - 2.30% Li₂O (Sample 23CR039)²
 - Grades persist over strike length
 - Multiple programs of works and heritage clearances approved for maiden RC drilling program



1 Refer to ASX Announcement dated 5 September 2023
 2 Refer to ASX Announcement dated 24 July 2023
 3 Refer to ASX Announcement dated 5 October 2023

RADIO HILL PROCESSING PLANT

100% owned processing plant - significantly reduces capital and lead time to begin production

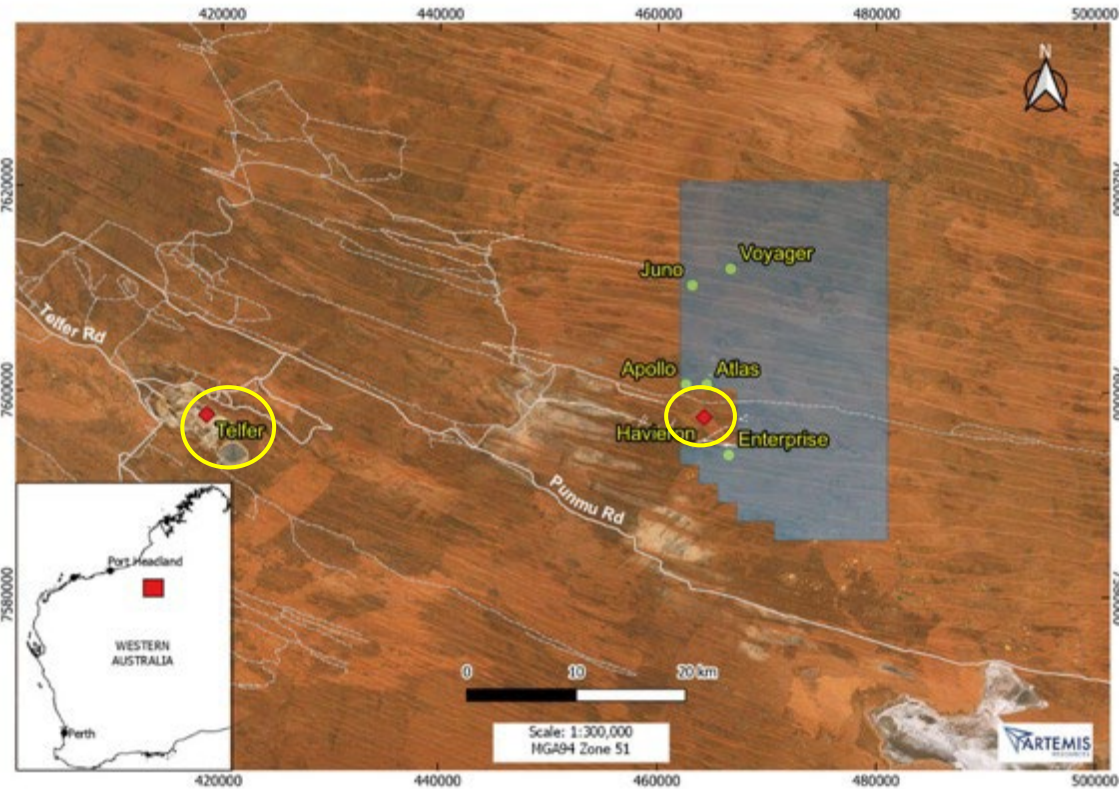
Overview

- 500,000 tpa plant
- Located only ~35km south of Karratha, which has accommodation, supplies and other facilities
- Situated on granted mining lease
- Large amount of associated plant infrastructure (power / water / accommodation) and spares inventory
- Three large permitted tailings storage facilities in place along with environmental and production permits in good standing

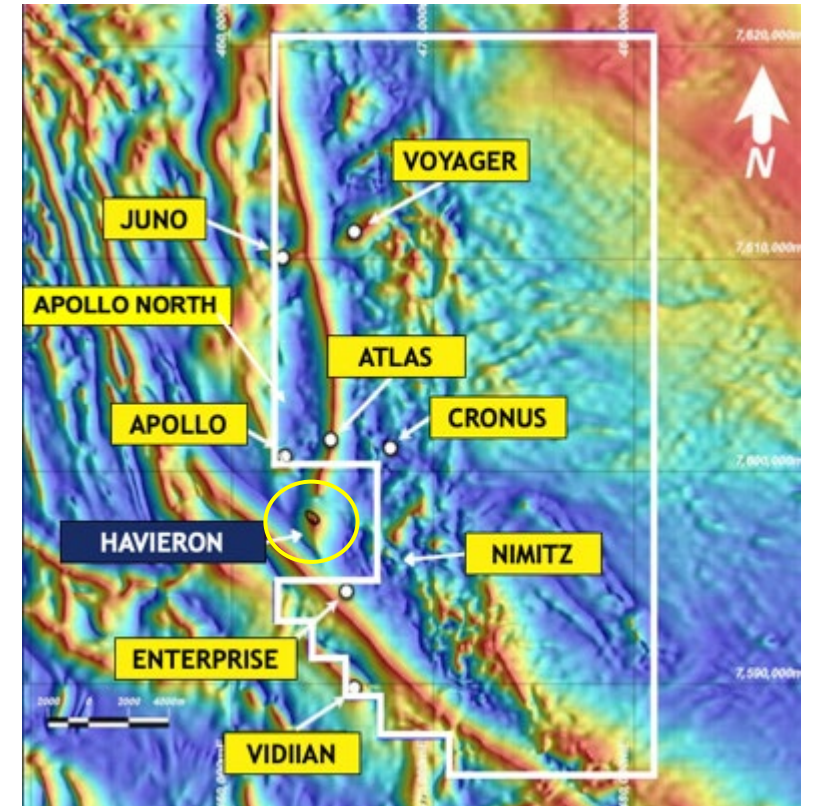


PATERSON CENTRAL Au/Cu PROJECT

High potential greenfield exploration opportunity located adjacent to the world-class 8.4Moz AuEq Havieron discovery



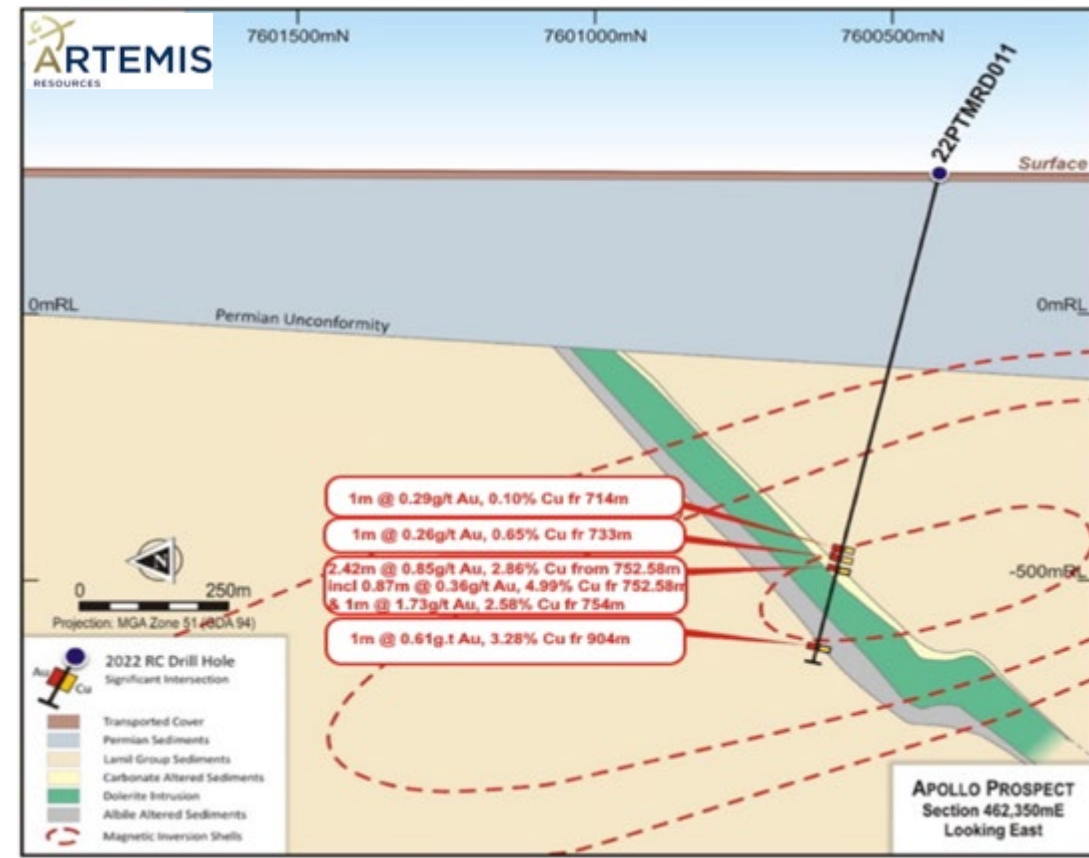
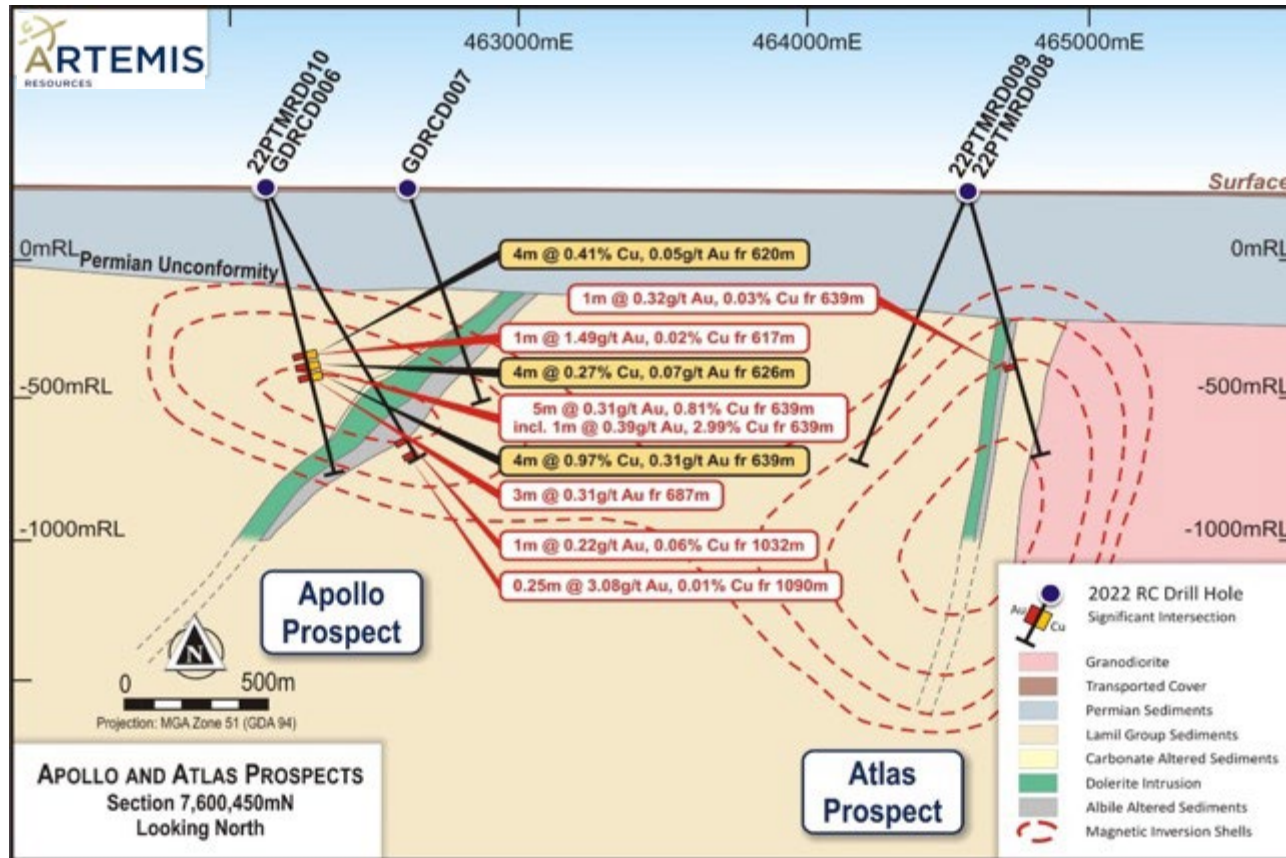
- 100% owned ~600km² exploration license covering the Paterson Central prospects
- Located adjacent to the world-class **8.4Moz AuEq Havieron** deposit which is a JV with Newmont Mining (ASX:NEM)
- Only ~45km from the Telfer mine
- Multiple targets have been generated using geological, magnetic, gravity, seismic, structural and geochemical datasets. High priority targets within the Havieron “NW corridor”
- Previous drilling intercepted same lithotypes and similar mineralisation as Havieron
- These lithotypes are typical of a ‘near-miss’ at Havieron
- New target identified – **Apollo North**
- **Process underway to farm out**



1 Refer to ASX Announcement dated 8 February 2021.

2 * Based on 100% ownership

ATLAS AND APOLLO SIGNIFICANT INTERCEPTS



- Significant intercepts within drill hole 22PTMRD010 include 5m @ 0.32g/t Au and 0.81% Cu from 639m, including¹:
 - 1m @ 0.39g/t Au and 2.99% Cu from 639m

- Significant intercepts within drill hole 22PTMRD011 include 2.42m @ 0.85g/t Au and 2.86% Cu from 752.58m, including¹:
 - 0.87m @ 0.36g/t Au and 4.99% Cu from 752.58m;
 - 1m @ 1.73g/t Au and 2.58% Cu from 754m; and
 - 1m @ 0.61g/t Au and 3.28% Cu from 904m

¹ Refer to ASX Announcement dated 12 December 2022

INVESTMENT HIGHLIGHTS



Attractive suite of growth commodities: the Mt Marie Lithium and Osborne East prospects (100%), & Osborne Lithium JV (49%); The Karratha Gold Project with multiple prospects including the Carlow gold/copper project - 704koz Au eq, and The Paterson Gold/Copper Project.



Highly strategic location: Tier 1 jurisdiction, close proximity to major hub at Karratha including regional rail and road infrastructure, administrative centre and the Dampier Port



Significant exploration upside: highly prospective tenure package in the Pilbara Region of Western Australia which is the next frontier for battery minerals growth



Mineral Resource with growth potential: existing high-grade gold-copper-cobalt Inferred Mineral Resource at Carlow (100%-owned tenure)



Established processing site at Radio Hill: strategically located, fully permitted



ARTEMIS

RESOURCES

CONTACT

George Ventouras - Executive Director

E: info@artemisresources.com.au

W: artemisresources.com.au



ASX:ARV | AIM:ARV | FRA:ATY | USOTC:ARTTF

DISCLAIMER

This presentation (the "Presentation") has been prepared by Artemis Resources Limited ("ARV" or the "Company"). This Presentation contains general and background information about ARV's activities current as at the date of the Presentation, and (i) does not purport to be completed; and (ii) should not be considered to be comprehensive or to comprise all the information that an investor should consider when making an investment decision. The information is provided in summary form, has not been independently verified, and should not be considered to be comprehensive or complete. The Company is not responsible for providing updated information and assumes no responsibility to do so. The contents of this Presentation have not been reviewed, authorised or otherwise approved by the UK Financial Conduct Authority ("FCA"), the Australian Securities and Investments Commission ("ASIC"), the Australian Securities Exchange ("ASX") or any other regulatory body. Reliance on this Presentation for the purpose of engaging in any investment activity may expose an individual to a significant risk of losing all of the property or other assets invested. If you are in doubt about the content of this Presentation and/or any action you should take, you are strongly recommended to seek your own independent financial advice immediately from your stockbroker, lawyer, accountant or other independent financial adviser authorised by the FCA, ASIC or the ASX (as applicable). This Presentation contains both historical facts and statements relating to the Company's current plans, estimates, objectives, and strategies which are forward-looking statements. Such forward-looking statements involve known and unknown risks, uncertainties and other important factors beyond the Company's control that could cause the actual results, performance, or achievements of the Company to be materially different from future results, performance or achievements expressed or implied by such forward-looking statements. Accordingly, any reliance you place on such forward-looking statements will be at your sole risk and the Company expressly disclaims any obligation or undertaking to disseminate any updates or revisions to any forward-looking statements contained in this Presentation to reflect any changes in its expectations with regard thereto or any change in events, conditions or circumstances on which any statement is based. The information contained in this Presentation is subject to change without notice. No representation or warranty, express or implied, is given as to the accuracy, completeness or fairness of the information or opinions contained in this Presentation and no liability is accepted by the Company or any of its directors, members, officers, employees, agents, or advisers for any such information or opinions. The Company's nominated adviser and broker in the United Kingdom, WH Ireland Limited ("WH Ireland"), who is regulated by the Financial Conduct Authority, advise the Company and no one else (whether or not a recipient of these slides) in relation to the Company and will not be responsible to anyone, other than the Company, for providing the protections afforded to customers of the Brokers respectively nor for providing advice in relation to the Company. WH Ireland has not authorised the contents of these slides or any of them. This Presentation is for distribution in or from the UK only to persons authorised or exempted within the meaning of those expressions under FSMA 2000 or any order made under it or to those persons to whom these slides may be lawfully distributed pursuant to the Financial Services and Markets Act 2000 (Financial Promotion) Order 2005 ("Financial Promotion Order") as amended, including Investment Professionals as defined in article 19(5) and high net worth entities as defined in article 49(2) of the Financial Promotion Order. Additionally, this Presentation is also for distribution in or from Australia only to persons to whom an offer of securities may be made without a disclosure document (as defined in the Australian Corporations Act 2001 (Cth) ("Corporations Act") on the basis that such persons are exempt from the disclosure requirements of Part 6D.2 in accordance with Section 708(8) or 708(11) of the Corporations Act. Persons who do not fall within any of these definitions should not rely on these slides nor take any action upon them. This Presentation and the information contained in it do not constitute a prospectus or disclosure document and does not form any part of an offer of, or invitation to apply for, securities. Neither this Presentation, nor any part of it, nor the fact of its use, should form the basis of, or be relied on in connection with, any contract or commitment or investment decision.

Some or all of the information contained in these slides and the Presentation (and any other information which may be provided) may be inside information relating to the securities of the Company within the meaning of the Criminal Justice Act 1993 and the Market Abuse Regulation (EU/596/2014) as it forms part of UK law by virtue of the European Union (Withdrawal) Act 2018, as amended (MAR). Recipients of this information shall not disclose any of this information to another person or use this information or any other information to deal, or to recommend or induce another person to deal in the securities of the Company on any exchange (or attempt to do so). Recipients of this information shall ensure that they comply or any person to whom they disclose any of this information complies with this paragraph and also with MAR. The term "deal" is to be construed in accordance with the Criminal Justice Act 1993 and with MAR. This Presentation does not constitute an offer to sell, or a solicitation to buy securities in any jurisdiction in which such offer or solicitation is unlawful. In particular, this Presentation is not, subject to certain exceptions, for distribution in or into the United States, Canada, the Republic of South Africa, the Republic of Ireland or Japan. The Company's shares have not been and will not be registered under the United States Securities Act of 1933, as amended, nor under the securities legislation of any state of the United States or any province or territory of Canada, the Republic of South Africa, the Republic of Ireland or Japan or in any country, territory or possession where to do so may contravene local securities laws or regulations. Accordingly, ARV's shares are not, subject to certain exceptions, to be offered or sold directly or indirectly in or into the United States, Canada, the Republic of South Africa, the Republic of Ireland or Japan or to any national, citizen or resident of the United States, Canada, the Republic of South Africa or Japan.

The information in this report that relates to Exploration Results and Exploration Targets complies with the 2012 Edition of the Australasian Code for Reporting of Exploration Results, Mineral Resources and Ore Reserves ("The JORC Code") and has been compiled under the supervision of Mr Oliver Hirst MAusIMM. Mr Hirst is a technical consultant to Artemis Resources Ltd. Mr Hirst has sufficient experience relevant to the styles of mineralisation and type of deposits under consideration and to the activity being undertaken to qualify as a Competent Person as defined in The JORC Code. Mr Hirst consents to the inclusion in the report of the matters based on this information in the form and context in which it appears.

The information in this report that relates to Mineral Resources complies with the 2012 Edition of the Australasian Code for Reporting of Exploration Results, Mineral Resources and Ore Reserves ("The JORC Code") and has been compiled and assessed under the supervision of Ms Janice Graham MAusIMM MAIG. Ms Graham is an employee of Snowden Optiro. Ms Graham has sufficient experience relevant to the styles of mineralisation and type of deposits under consideration and to the activity being undertaken to individually qualify as a Competent Person as defined in The JORC Code. Ms Graham consents to the inclusion in the report of the matters based on this information in the form and context in which it appears.

APPENDIX: JORC MINERAL RESOURCE

Greater Carlow Mineral Resources by weathering state^{1,2,3}

Domain	Tonnes (Mt)	AuEq (g/t)	Au (g/t)	Cu (%)	Co (%)	Au (oz)	Cu (t)	Co (t)
Oxide	1.29	1.5	0.8	0.59	0.07	34,000	8,000	1,000
Transition	1.49	2.0	1.2	0.84	0.09	56,000	13,000	1,000
Fresh	5.96	2.8	1.5	0.73	0.10	285,000	44,000	6,000
Total	8.74	2.5	1.3	0.73	0.09	374,000	64,000	8,000

Greater Carlow Mineral Resources by area above a cut-off of 0.7g/t AuEq^{1,3}

Domain	Tonnes (Mt)	AuEq (g/t)	Au (g/t)	Cu (%)	Co (%)	Au (oz)	Cu (t)	Co (t)
Main	6.33	2.4	1.3	0.70	0.08	271,000	44,300	5,100
Quod Est	0.19	3.2	1.5	0.85	0.24	9,000	1,600	450
Crosscut	0.73	2.2	0.7	0.99	0.09	16,000	7,300	650
Total	7.25	2.4	1.3	0.73	0.09	296,000	53,200	6,200

Greater Carlow Mineral Resources by area above a cut-off of 2.0g/t AuEq^{2,3}

Domain	Tonnes (Mt)	AuEq (g/t)	Au (g/t)	Cu (%)	Co (%)	Au (oz)	Cu (t)	Co (t)
Main	1.09	3.1	1.9	0.57	0.11	66,000	6,250	1,200
Crosscut	0.39	3.1	1.0	1.14	0.14	12,500	5,560	550
Total	1.49	3.1	1.6	0.72	0.12	78,500	10,700	1,750

Significant inputs to the JORC Inferred Resource

Parameter	Input value
Overall slope angles	Oxide 40°, Transition 45°, Fresh 50°
Processing cost	A\$50/t
Gold recoveries	Oxide 96%, Transitional 93.5%, Fresh 93%
Copper recoveries	Oxide 61%, Transitional 56%, Fresh 90.5%
Cobalt recoveries	Oxide 47%, Transitional 43%, Fresh 78%
Mining costs	A\$2.70/t + 0.5c/t per m below 30mRL, thereafter add Transitional A\$0.25/t and Fresh A\$0.50/t. OP strip ratio 12:1
NSRs (incl. payability, royalty and treatment and refining costs)	Gold: 94%, Copper 84%, Cobalt 41%
Gold price	A\$2,600/oz
Copper price	A\$12,699/t
Cobalt price	A\$90,478/t
Au royalty (in dore)	2.5%
Au royalty (in concentrate)	5%
Cu royalty	5%
Co royalty	5%

1 Reported above a cut-off of 0.7g/t AuEq within an optimised pit shell (current as at 13 October 2022).

2 Reported above a cut-off of 2.0g/t AuEq for underground using MSO shapes (current as at 13 October 2022).

3 The Resource is classified as an inferred Mineral Resource in accordance with the JORC Code, 2012. All tonnes are dry metric tonnes. Figures may not compute due to rounding.