

## Major aircore drill program underway at Aileron – West Arunta

- Multiple regional scale targets to be systematically tested in ~20,000m aircore drill program
- Initial drill testing of Green, Joyce, McIlroy and Macklin and follow up drilling to extend mineralisation identified at Hurley, Crean-Hoschke and Emily
- Reconnaissance aircore drilling at the Crabeater, Leopard, Mawson and Wordie targets to determine bedrock geology and establish cover conditions
- RC/diamond drilling to follow up areas of significant mineralisation
- Diamond drilling (EIS co-funded) is scheduled to commence in the coming weeks at Perce to test a discrete, high amplitude (~6 mGal) density anomaly in the east of the project

Encounter Resources Ltd (“Encounter”) is pleased to announce that aircore drilling has commenced at the Aileron project (100% ENR) in the West Arunta region of WA.

Commenting on the major aircore drill campaign, Managing Director Will Robinson said:

*“This aircore drill program will include the first pattern-testing of numerous exciting targets defined in this highly fertile, new mineral belt. We will start with broad spaced aircore traverses and then prioritise closer spaced drilling based on initial observations.*

*We believe that aircore drilling will be a fast and cost-effective method to test for the presence of shallow, enriched niobium-REE carbonatite hosted mineralisation. RC/diamond drilling would then follow to determine continuity and scale.*

*The diamond rig will arrive at Aileron in the next two weeks to start drilling at the Perce IOCG target and this rig would be utilised to provide rapid diamond core follow up for the aircore program.*

*For the next few months we will have two rigs (~20,000m aircore and ~2,000m diamond) operating at Aileron and we will also have access to an RC drill rig at short notice.”*



Photo 1 – Aircore drilling at the Crean-Hoschke target at Aileron – Senior Exploration Geologist, Graeme Hardwick and Field Technician, Troy Hepden

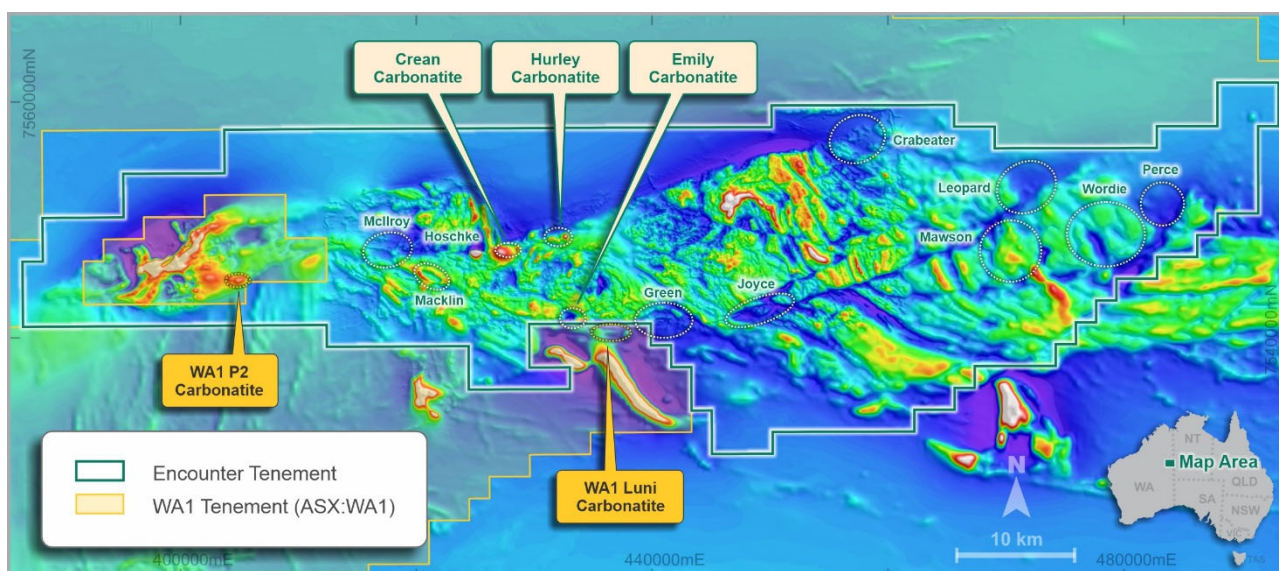


Figure 1 – Aileron project – Magnetics (RTP) - Multiple compelling targets to be drill tested in the coming months

## Southern Targets (Luni Corridor)

### Emily

Initial wide-spaced drilling at the Emily target in late 2023 intersected enriched niobium-REE mineralisation in two adjacent holes 400m apart:

- **12m @ 2.3% Nb<sub>2</sub>O<sub>5</sub> & 0.85% TREO from 54m (EAL098)<sup>1</sup>**  
part of 130m @ 0.7% Nb<sub>2</sub>O<sub>5</sub> & 0.23% TREO from 50m to end of hole
- **32m @ 1.0% Nb<sub>2</sub>O<sub>5</sub> & 0.25% TREO from 34m (EAL136, 400m east of EAL098)<sup>1</sup>**

Emily is centred on a magnetic low on the Endurance Fault situated north-west of WA1 Resources' Luni discovery (Figure 2).

Systematic aircore drilling will aim to establish continuity of the high-grade niobium-REE mineralisation at Emily and test for extensions to the east and west.

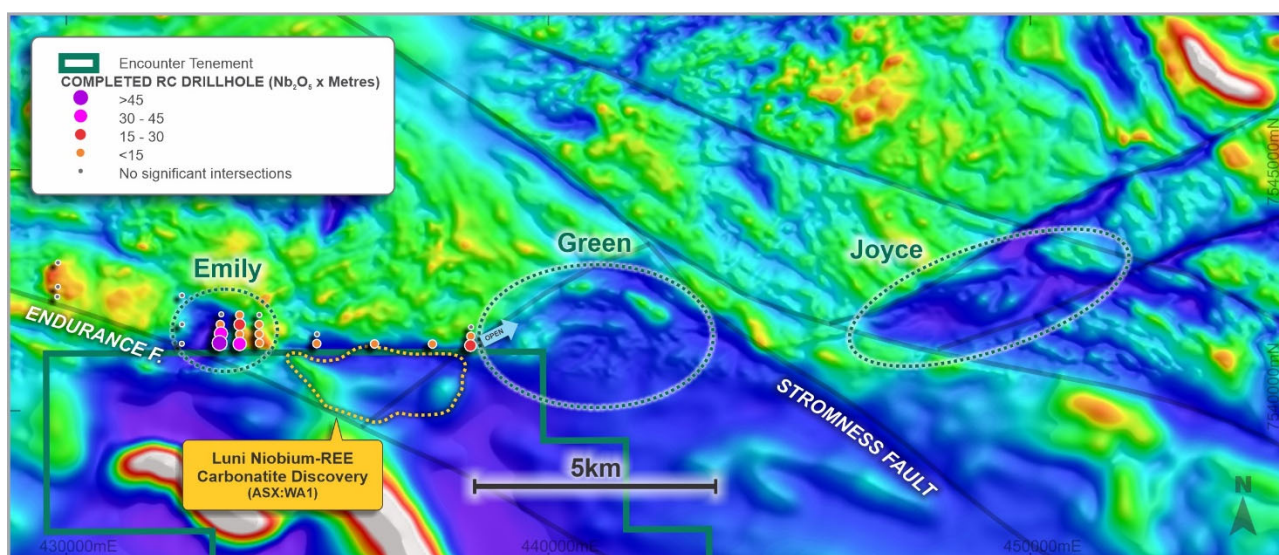


Figure 2 – Southern Targets - RTP magnetics with Emily, Green and Joyce targets defined by low magnetic, circular interpreted intrusive features at intersections of major regional structures <sup>1</sup>



## Green

Two RC holes drilled in 2023 on the western edge of Green established that the north-east structure extending from Luni to Green is mineralised and this trend is open along strike. This structure links between the major regional Endurance and Stromness faults (Figure 2).

A detailed aeromagnetic survey has highlighted a distinctive circular feature at Green which is interpreted to be a large intrusive complex and a priority drill target for 2024.

## Joyce

Located approximately 10km east of Luni, the Joyce target is another oval-shaped magnetically low, bounded by major regional structures, which is interpreted as a potential carbonatite intrusive complex (Figure 2). A series of reconnaissance north-south aircore traverses is planned for Joyce.

The 2024 aircore drill program will commence at Crean and Hurley and then move to Green and Joyce following receipt of final approvals.

## Northern Targets (Crean-Hurley Corridor)

### Crean-Hoschke

Diamond drillhole at Crean (EAL007) intersected a large and depth-extensive niobium-REE mineralised carbonatite including:

- 19m @ 1.0% Nb<sub>2</sub>O<sub>5</sub> & 0.2% TREO from 65m and
- 48m @ 1.0% Nb<sub>2</sub>O<sub>5</sub> & 0.2% TREO from 181.5m (EAL007)  
part of 282m @ 0.54% Nb<sub>2</sub>O<sub>5</sub> & 0.17% TREO from 64m to end of hole <sup>2</sup>

High grade, near surface niobium-REE mineralisation was intersected 1.5km west of EAL007.

- 68.8m @ 0.8% Nb<sub>2</sub>O<sub>5</sub> & 0.5% TREO from 55m (EAL008) including:  
4m at 3.8% Nb<sub>2</sub>O<sub>5</sub> & 1.9% TREO from 56m <sup>2</sup>

The near surface mineralisation at Crean is open to the west and sparsely drilled to the east. Initial aircore drilling will focus on establishing the extent of the near surface mineralisation intersected in EAL008 and complete the first drill testing of the magnetic low located in the north of the Hoschke target that may represent favourable lithology for shallow, niobium-REE enriched mineralisation similar to Emily.

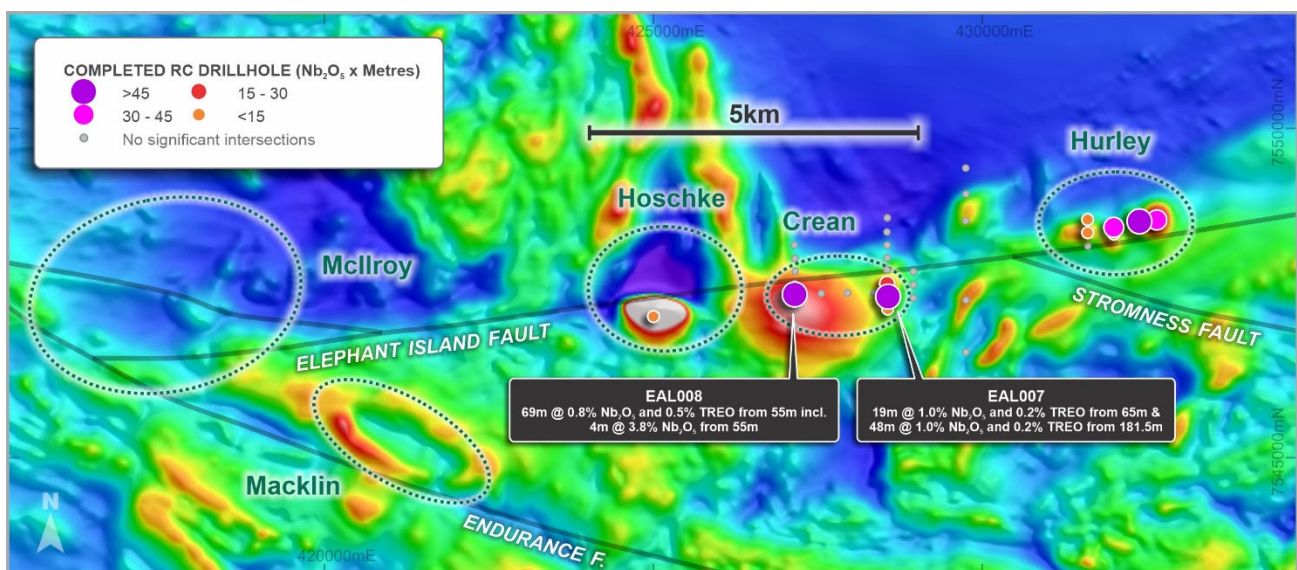


Figure 3 – Northern Targets (Mcllroy, Macklin, Crean-Hoschke and Hurley) over RTP magnetics <sup>2,3</sup>

## Hurley

First pass drilling at Hurley identified a large, mineralised carbonatite, over 1km in strike including:

- **24m @ 0.93% Nb<sub>2</sub>O<sub>5</sub> & 0.24% TREO from 66m (EAL034) part of 74m @ 0.53% Nb<sub>2</sub>O<sub>5</sub> & 0.20% TREO from 64m<sup>3</sup>**
- **28m @ 0.68 % Nb<sub>2</sub>O<sub>5</sub> & 0.16% TREO from 210m (EAL115) part of 165m @ 0.36% Nb<sub>2</sub>O<sub>5</sub> & 0.15% TREO from 90m to end of hole<sup>3</sup>**

Aircore drilling will test the area to the west of the Hurley niobium-REE carbonatite for additional near surface mineralisation at the intersection of the major regional Stromness and Elephant Island faults.

## Macklin

Macklin is an untested, interpreted intrusive body situated on the Endurance Fault identified in the magnetic survey. A line of aircore drilling will be completed to test this target.

## Mcllroy

Mcllroy is a magnetic low at the intersection of the Elephant Island and Endurance faults. Drilling in 2023 established that both of these faults host niobium-REE mineralised carbonatites. A series of north-south aircore drill traverses is planned for Mcllroy.

## Eastern Targets

### Perce

The Perce target is located ~50km east of the existing drilling at Aileron (Figure 4). Perce is a high priority geophysical target that is a discrete, high amplitude (~6 mGal) density anomaly located at a key structural intersection. Perce may represent an alkaline/carbonatite intrusion or zones of hematite alteration considered prospective for IOCG mineralisation.

Diamond drilling (EIS co-funded by the WA Government) is scheduled to commence next week at Perce.

### Mawson and Wordie

Reconnaissance aircore drilling is planned at the Mawson and Wordie targets (Figure 4) to determine bedrock geology and establish depth of cover prior to deeper RC/diamond drilling.

### Crabeater and Leopard

The new Crabeater and Leopard targets are located at the intersections of major structures in the eastern part of Aileron (Figures 1 and 4). These major structures are interpreted as key fluid pathways for carbonate rich fluids to intrude into the West Arunta region. The magnetic low features coincident with structural intersections at Leopard and Crabeater are interpreted as potential locations where these fluids may focus to form niobium-REE carbonatite deposits.

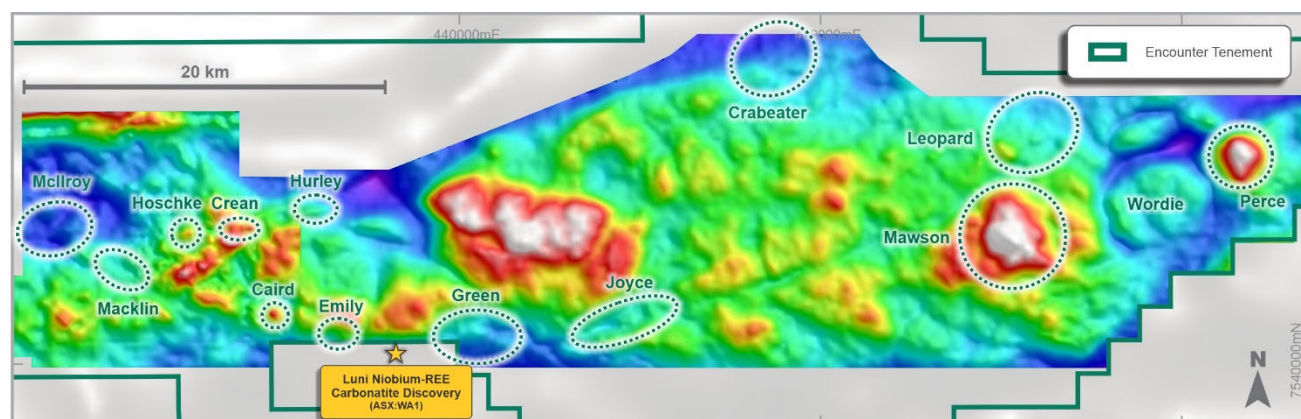
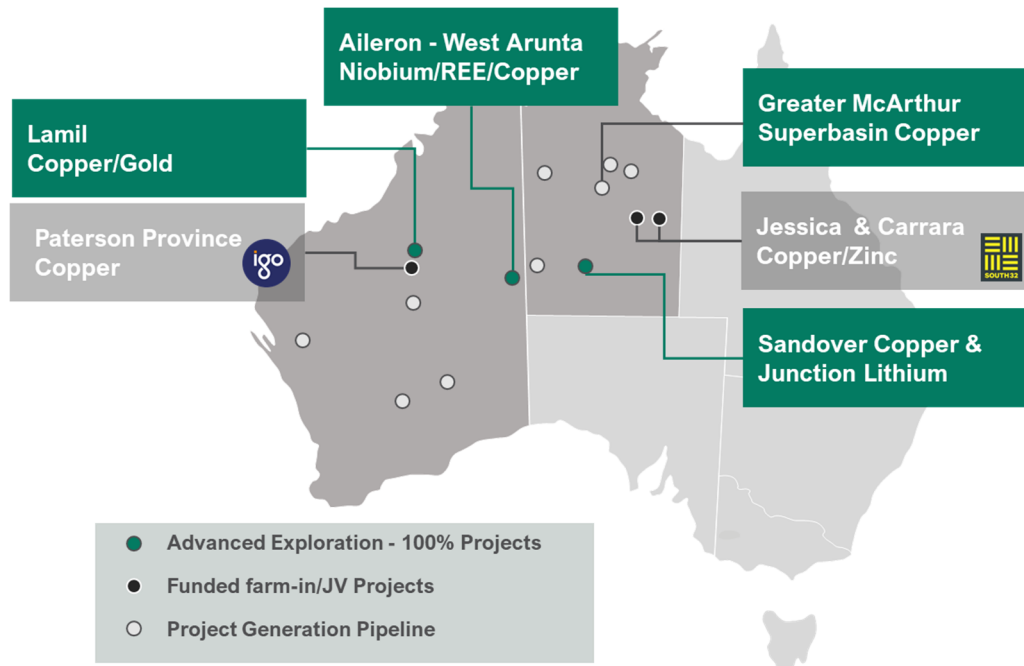


Figure 4 – Eastern Targets (Perce, Mawson, Wordie) were highlighted in regional Falcon gravity survey <sup>4</sup>

## About Encounter

Encounter is one of Australia's leading mineral exploration companies listed on the ASX. Encounter's primary focus is on discovering major copper and niobium/REE deposits in Australia.

Encounter controls a large portfolio of 100% owned projects in Australia's most exciting mineral provinces that are prospective for copper and critical minerals including the Aileron project in the West Arunta region of WA. Complementing this, Encounter has numerous large scale copper projects being advanced in partnership and funded through farm-in agreements with leading miners: South32 and IGO.



### For further information, please contact:

Will Robinson  
 Managing Director  
 +61 8 9486 9455  
[contact@enr.com.au](mailto:contact@enr.com.au)

Michael Vaughan  
 Fivemark Partners  
 +61 422 602 720  
[michael.vaughan@fivemark.com.au](mailto:michael.vaughan@fivemark.com.au)

*The Company confirms that it is not aware of any new information or data that materially affects the information in the relevant ASX releases and the form and context of the announcement has not materially changed.*

*The Company confirms that the form and context in which the Competent Persons findings are presented have not been materially modified from the original market announcements.*

*This announcement has been approved for release by the Board of Encounter Resources Limited.*

<sup>1</sup> ASX announcement 30 January 2024  
<sup>2</sup> ASX announcement 29 January 2024  
<sup>3</sup> ASX announcement 6 September 2023  
<sup>4</sup> ASX announcement 12 May 2023