

WESTERN MINES GROUP

THE MULGA TANK NICKEL SULPHIDE DISCOVERY

121 MINING INVESTMENT LONDON
15-16 MAY 2024

58.69 28 Ni Nickel	58.93 27 Co Cobalt	63.55 29 Cu Copper	106.4 46 Pd Palladium	195.1 78 Pt Platinum
---------------------------------	---------------------------------	---------------------------------	------------------------------------	-----------------------------------

@westernmines



westernmines



Western Mines Group



ASX: **WMG**
www.westernmines.com.au

DISCLAIMER



NATURE OF THIS DOCUMENT

This presentation has been prepared by Western Mines Group Ltd ACN 640 738 834 (Company). The information is based on publicly available information, internally developed data and other sources. By receiving this presentation, you acknowledge and represent to the Company that you have read, understood and accepted the terms of this disclaimer.

It is the responsibility of all recipients of this presentation to obtain all necessary approvals to receive this presentation and receipt of this presentation will be taken by the Company to constitute a representation and warranty that all relevant approvals have been obtained.

This presentation is a visual aid and is not intended to be read as a stand-alone document. The material contains selected and abbreviated summary information about the Company and its activities current as at the date of this presentation. The material is of general background and does not purport to be complete. The Company is not responsible for providing updated information and assumes no responsibility to do so.

NOT AN OFFER

This presentation is for information purposes only and does not purport to be all inclusive or to contain all information about the Company or any of the assets, current or future, of the Company. This presentation does not comprise a prospectus, product disclosure statement or other offering document under Australian law (and will not be lodged with ASIC) or any other law.

This presentation also does not constitute or form part of any invitation, offer for sale or subscription or any solicitation for any offer to buy or subscribe for any securities in any jurisdiction nor shall they or any part of them form the basis of or be relied upon in connection therewith or act as any inducement to enter into any contract or commitment with respect to securities.

This presentation does not constitute an offer to sell, or a solicitation of an offer to buy, any securities in the United States. This presentation and its contents must not be distributed, transmitted or viewed by any person in the United States or any jurisdiction where the distribution, transmission or viewing of this document would be unlawful under the securities or other laws of that or any other jurisdiction.

NOT INVESTMENT ADVICE

To the maximum extent permitted by law, the information contained in this presentation is given without any liability whatsoever being accepted by the Company or any of its related bodies corporate or their respective directors, officers, partners, employees, advisors and agents. This presentation is not investment or financial product advice (nor tax, accounting or legal advice) and its contents are not intended to be used for the basis of making an investment decision. No representation or warranty, express or implied, is made as to the accuracy, completeness or thoroughness of the information, whether as to the past or future.

Recipients of this presentation should carefully consider whether the company is an appropriate investment for them in light of their personal circumstances, including their financial and taxation position. This presentation does not take into account the individual investment objectives, financial situation and particular needs of each recipient of this presentation. Therefore, recipients of this presentation may wish to seek independent financial and taxation advice before making any decision in respect of this presentation. Neither the Company nor any of its related bodies corporate is licensed to provide financial product advice in respect of the Company's securities or any other financial products.

FORWARD LOOKING STATEMENTS

Statements and material contained in this presentation, particularly those regarding possible or assumed future performance, production levels or rates, commodity prices, resources or potential growth of the Company, industry growth or other trend projects are, or may be, forward looking statements. Such statements relate to future events and expectations and, as such, involve known and unknown risks and uncertainties and are based on the assumptions, estimates, analysis and opinions of management made in light of its experience and its perception of trends, current conditions and expected developments, as well as other factors that management of the Company believes to be relevant.

Although management believes that the assumptions made by the Company and the expectations represented by such information are reasonable, there can be no assurance that the forward-looking information will prove to be accurate. Forward-looking information involves known and unknown risks, uncertainties, and other factors which may cause the actual results, performance or achievements of the Company to be materially different from any anticipated future results, performance or achievements expressed or implied by such forward-looking information. Such factors include, among others, the actual market price of commodities, the actual results of current exploration, the actual results of future exploration, changes in project parameters as plans continue to be evaluated, as well as those factors disclosed in the Company's publicly filed documents. Readers should not place undue reliance on forward-looking information. The Company does not undertake to update any forward-looking information, except in accordance with applicable securities laws.

DISCLAIMER

No representation or warranty, express or implied, is made by the Company that the material contained in this presentation will be achieved or prove to be correct. Except for statutory liability which cannot be excluded, each of the Company, its directors, officers, employees, advisers and agents expressly disclaims any responsibility for the accuracy, fairness, sufficiency or completeness of the material contained in this presentation, or any opinions or beliefs contained in this presentation, and excludes all liability whatsoever (including in negligence) for any loss or damage which may be suffered by any person as a consequence of any information in this presentation or any error or omission therefrom. To the maximum extent permitted by the law, the Company disclaims any obligation to update or keep current the information contained in this presentation or to correct any inaccuracy or omission which may become apparent, or to furnish any person with any further information. Any opinions expressed in the presentation are subject to change without notice.

COMPETENT PERSON STATEMENT

The information in this announcement that relates to exploration results and the Exploration Target for the Mulga Tank Project complies with the 2012 Edition of the Joint Ore Reserves Committee (JORC) Australasian Code for Reporting of Exploration Results, Mineral Resources and Ore Reserves (JORC Code) and has been compiled and assessed under the supervision of Dr Caedmon Marriott, Managing Director of Western Mines Group Ltd. Caedmon is a member of the Australasian Institute of Mining and Metallurgy, the Australian Institute of Geoscientists and the Society of Economic Geologists. Caedmon has sufficient experience that is relevant to the styles of mineralisation and type of deposits under consideration, and to the activity being undertaken, to qualify as a Competent Person as defined in the 2012 Edition of the 'Australasian Code for Reporting of Exploration Results, Mineral Resources and Ore Reserves'. Caedmon consents to the inclusion in this presentation of the matters based on his information in the form and context in which it appears.

MONETARY VALUES

Unless otherwise stated, all dollar values are in Australian Dollars (A\$). The information in this presentation remains subject to change without notice.

WESTERN MINES GROUP COMPANY OVERVIEW

- **Exceptional flagship project** – discovery of a major komatiite hosted nickel sulphide mineral system under cover in WA
- “Globally significant” – JORC Exploration Target 350Mt to 2,200Mt at 0.24-0.35% Ni
- Exploration team lead by **WA nickel expert** Dr Ben Grguric
- Nickel market at cyclical lows – significant discovery for the upswing
- **Tight capital structure** with ~\$25m market cap
- **Highly leveraged** to ongoing exploration success



“An exploration driven company looking to create value through discovery”

Western Mines Group Ltd

ASX:WMG

Shares Outstanding	75,718,182
Share Price <small>(14/05/24)</small>	\$0.305
Market Capitalisation	\$23.09 Million
Cash <small>(31/03/24)</small>	\$1.77 Million
Unlisted Options <small>(\$0.30 strike)</small>	20,131,670

Equentia Natural Resources

8.5%

Directors and Management

11.7%

Top 20 Shareholders

45.0%

SIGNIFICANT NEAR TERM NEWS FLOW | SMALL MARKET CAP | EXCITING RISK-REWARD

Cautionary Statement on JORC Exploration Target: The Exploration Target has been prepared and reported in accordance with the 2012 edition of the JORC Code. The potential quantity and grade of the Exploration Target is conceptual in nature. There has been insufficient exploration to estimate a Mineral Resource and it is uncertain if further exploration will result in the estimation of a Mineral Resource.

NICKEL: KEY COMPONENT OF THE GLOBAL ENERGY TRANSITION

BATTLE OF CLEAN GREEN NICKEL SULPHIDE VERSUS DIRTY NICKEL LATERITE



NICKEL LATERITE

Around four times more energy and CO2 intensive than sulphide, large surficial deposits in tropical regions such as Indonesia are extremely environmentally destructive



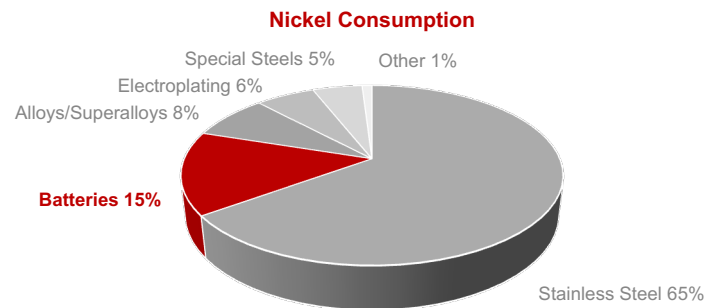
HIGH-GRADE MASSIVE NICKEL SULPHIDE

High value per tonne deposits, hard to find on a size and scale that will meet supply shortfall e.g. major Nova Bollinger discovery "only" ~325,000t of contained Ni



LARGE LOW-GRADE DISSEMINATED NICKEL SULPHIDE

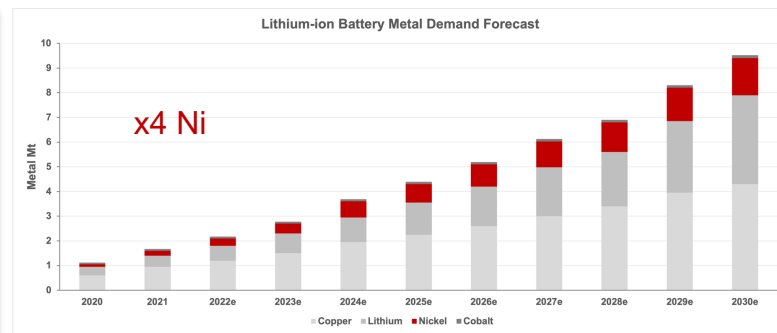
Largest nickel mines in the world, nickel "equivalent" of copper porphyry, economies of scale, deposits >1Mt of contained Ni able to supply +30kt/yr Ni for multiple decades, readily produce high-grade Ni concentrate



LARGE LOW-GRADE NICKEL SULPHIDE WILL INCREASINGLY BECOME AN ESSENTIAL NEW SUPPLY

Deposit	Nickel (M&I Resource)	Ni Grade	Producing	Company
Norilsk-Talnakh (Russia)	11.3Mt	0.75%	Yes	Nornickel
Dumont (Canada)	4.4Mt	0.27%	No	Magneto Investments
Jinchuan (China)	4.4Mt	1.39%	Yes	Jinchuan Group
Sotkamo (Finland)	3.9Mt	0.23%	Yes	Terrafame
Crawford (Canada)	3.5Mt	0.23%	No	Canada Nickel
Turnagain (Canada)	3.2Mt	0.21%	No	GigaMetals
Mt Keith/Yakabindie (Australia)	2.6Mt	0.58%	Yes	BHP
Decar (Canada)	2.4Mt	0.21%	No	FPX Nickel

Source: Canada Nickel Investor Presentation April 2023



Source: Bloomberg NEF

FRONTIER EXPLORATION IN A WORLD CLASS NICKEL PROVINCE

YILGARN CRATON WESTERN AUSTRALIA

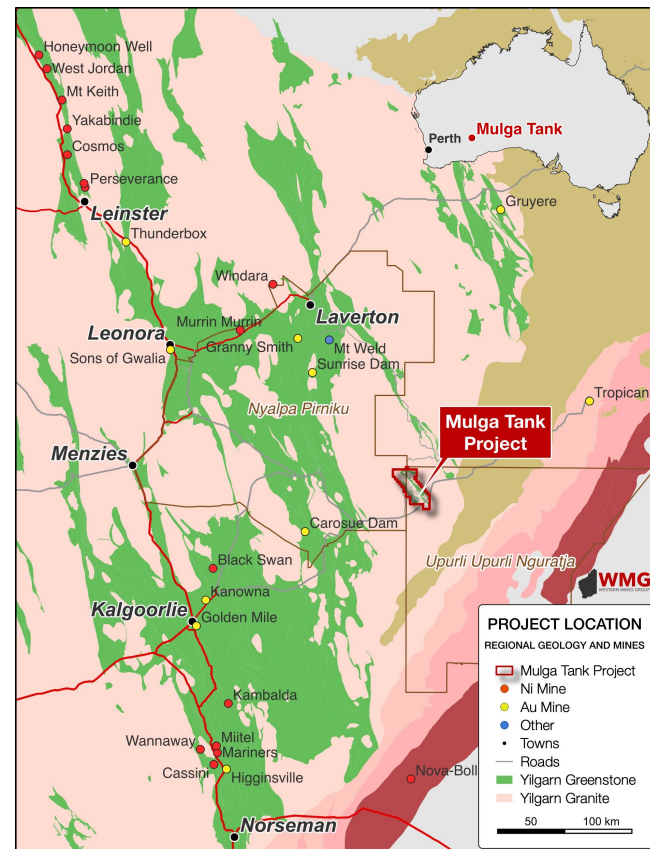
- One of the world's major nickel provinces
- World-class examples of komatiite-hosted nickel deposits – Kambalda (35Mt @ 3.1% Ni), Perseverance (50Mt @ 2.3% Ni) and Mt Keith (643.7Mt @ 0.58% Ni)

MULGA TANK Ni-Cu-PGE PROJECT

- Frontier exploration play for major komatiite-hosted Ni-Cu-PGE deposits under cover
- Strategically assembled 425km² position on the under-explored Minigwal Greenstone Belt
- Mulga Tank Ultramafic Complex (WGM 100%) is a "camp scale" project

EXPLORATION MODELS ARE PERSEVERANCE AND MT KEITH

Model	PERSEVERANCE	MT KEITH
Type	Type 1 Stratiform Basal Massive Sulphide	Type 2 Interstitial Disseminated Sulphide
Size	650m x 160m	1,900m x 400m



BELT SCALE OPPORTUNITY WMG OWN 100%

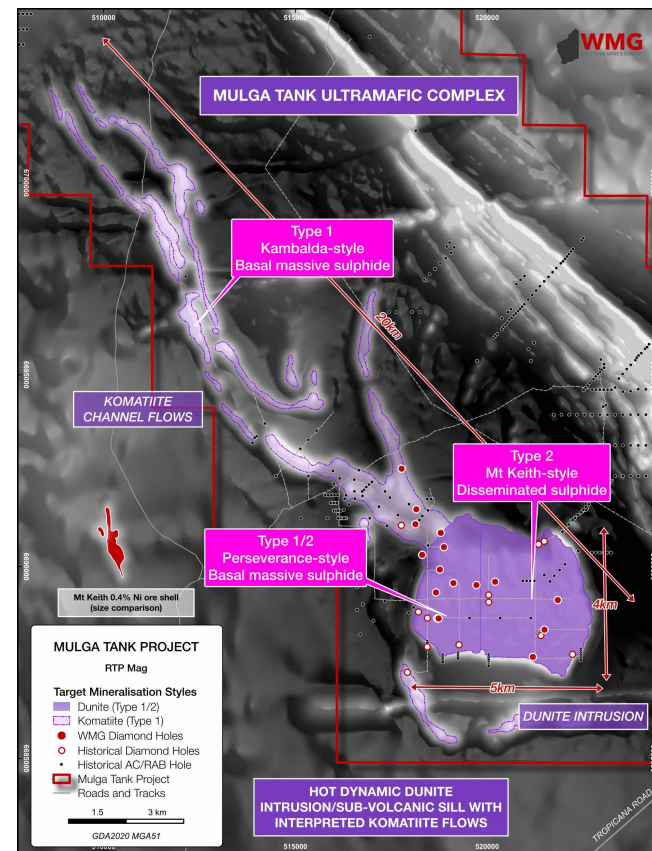
MAJOR KOMATIITE NICKEL SYSTEM UNDER COVER

- Large adcumulate dunite body (~15km²) with interpreted komatiite channel flows extending NW over >12km
- Drilling beneath sand cover - 60 out of 69 holes show nickel sulphide mineralisation
- **ALL THREE MINERALISATION STYLES PRESENT** – Mt Keith, Perseverance and Kambalda

ALL CRITICAL ELEMENTS OF A LARGE-SCALE WORKING SYSTEM

Critical Process	Description	Evidence
Source	Komatiite magma	✓
Pathway	Transport of komatiite magma through the crust	✓
Sulphur saturation	Addition of sulphur and sulphur saturation of undersaturated magma	✓
Chemical and physical trap	Sequestering metals into sulphides	✓
Physical concentration	Concentration of metal-rich sulphides into deposits	?

Adapted from: GSWA, Komatiite-Hosted Ni-Cu-PGE Deposits: A Mineral Systems Analysis, LL Grech, 2022



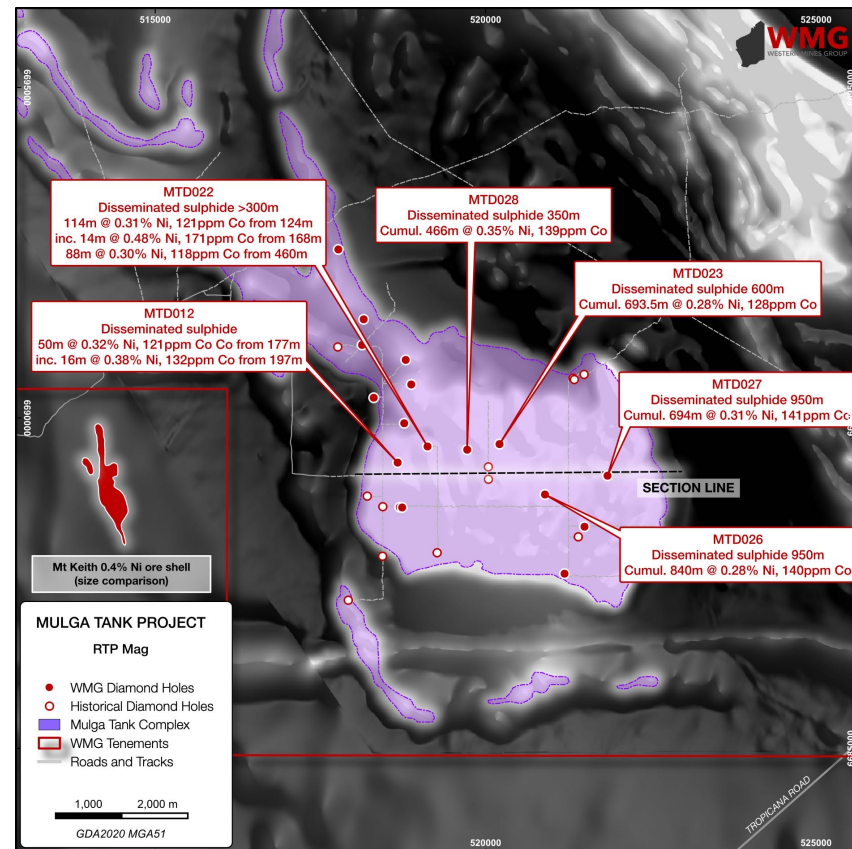
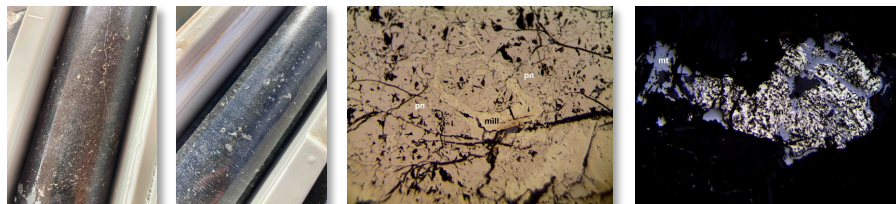
DISCOVERY OF EXTENSIVE MT KEITH-STYLE MAGMATIC SULPHIDE

DISSEMINATED SULPHIDES OVER >500M INTERVALS

- Deep EIS holes MTD023 and MTD026 intersected extensive disseminated magmatic sulphides
- MTD023: Cumulative 693.5m at 0.28% Ni, 128ppm Co, 61ppm Cu, 27ppb Pt+Pd with S:Ni 1.1
- MTD026: Cumulative 840m at 0.28% Ni, 140ppm Co, 103ppm Cu, 24ppb Pt+Pd with S:Ni 1.6
- MTD027: Cumulative 694m at 0.31% Ni, 141ppm Co, 68ppm Cu, 30ppb Pt+Pd with S:Ni 1.0
- MTD028: Cumulative 466m at 0.35% Ni, 139ppm Co, 62ppm Cu, 43ppb Pt+Pd with S:Ni 1.0

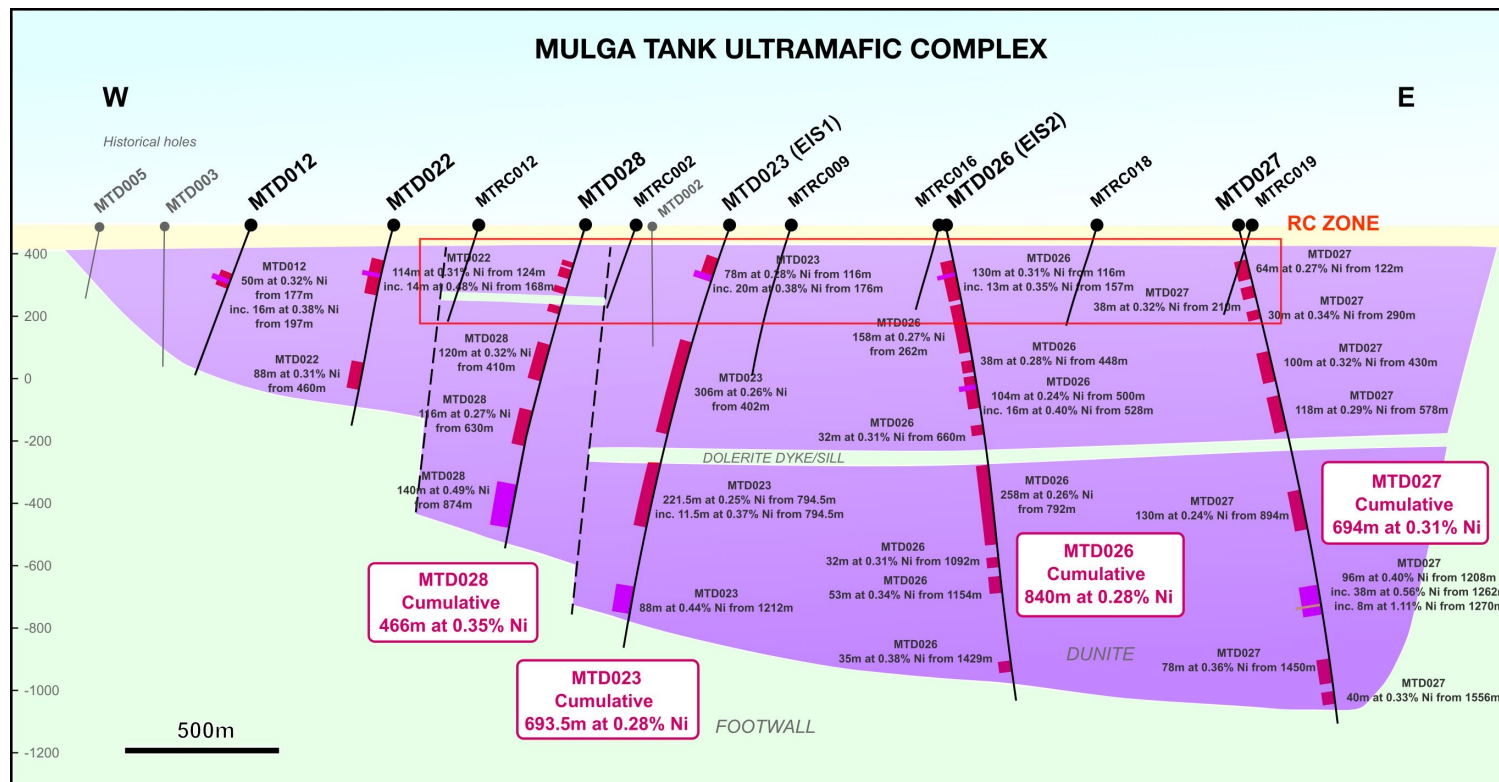
WITH EXAMPLES OF SHALLOW MINERALISED INTERVALS:

- MTD022: 114m at 0.31% Ni, 121ppm Co, 33ppm Cu from 124m inc. 14m at 0.48% Ni, 171ppm Co, 152ppm Cu from 168m
- MTD026: 130m at 0.31% Ni, 136ppm Co, 122ppm Cu from 116m inc. 13m at 0.35% Ni, 142ppm Co, 301ppm Cu from 157m
- Mineralogical work confirms abundant coarse grained pentlandite



MULTIPLE BROAD ZONES OF DISSEMINATED MINERALISATION

BRAVE LITTLE COMPANY DRILLING 1,500M DIAMOND HOLES



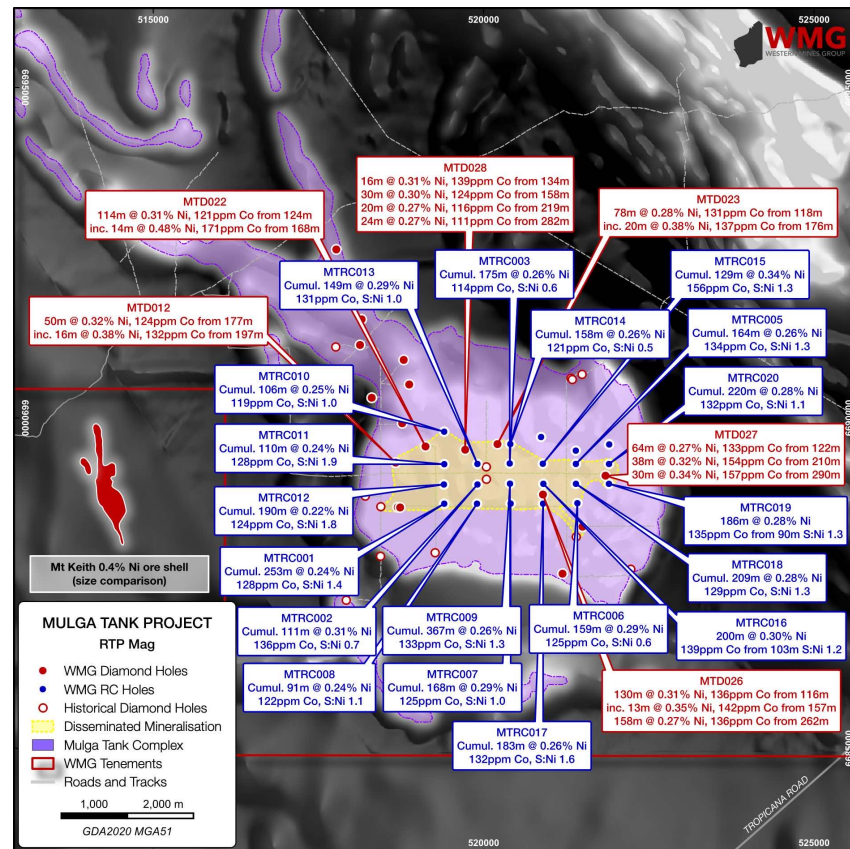
INITIAL RC PROGRAM CONFIRMED SHALLOW MINERALISATION

LARGE-SCALE OPEN-PIT POTENTIAL

- Initial 22 hole, 7,035m RC program – 19 out of 22 holes mineralised

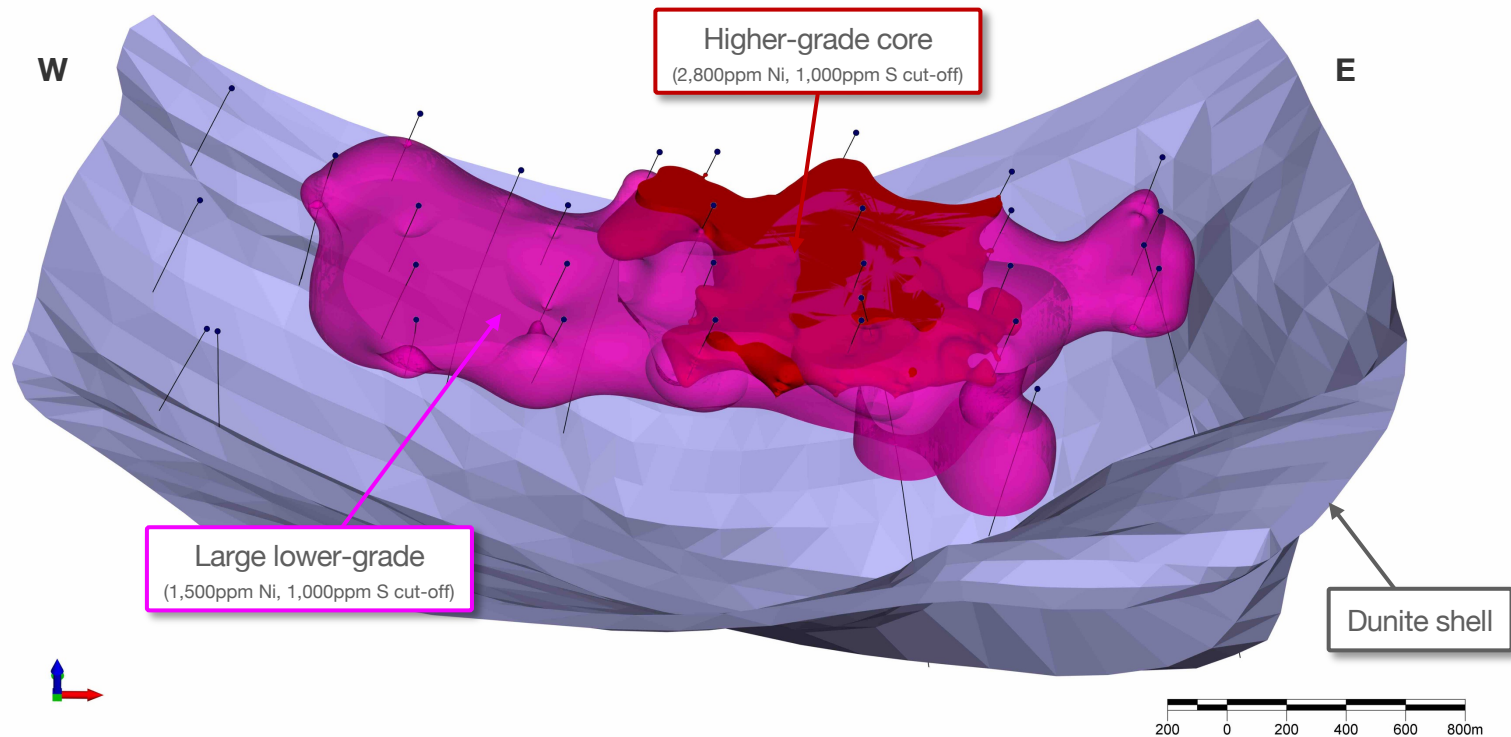
PHASE 1 RC RESULTS:

- MTRC001: Cumulative 253m at 0.24% Ni, 128ppm Co, 76ppm Cu, 27ppb Pt+Pd with S:Ni 1.4
- MTRC002: Cumulative 111m at 0.31% Ni, 136ppm Co, 69ppm Cu, 37ppb Pt+Pd with S:Ni 0.7
- MTRC003: Cumulative 175m at 0.26% Ni, 114ppm Co, 18ppm Cu, 19ppb Pt+Pd with S:Ni 0.6
- MTRC005: Cumulative 164m at 0.26% Ni, 134ppm Co, 114ppm Cu, 20ppb Pt+Pd with S:Ni 1.3
- MTRC006: Cumulative 159m at 0.29% Ni, 125ppm Co, 29ppm Cu, 12ppb Pt+Pd with S:Ni 0.6
- MTRC007: Cumulative 168m at 0.29% Ni, 133ppm Co, 50ppm Cu, 16ppb Pt+Pd with S:Ni 1.0
- MTRC008: Cumulative 91m at 0.24% Ni, 122ppm Co, 53ppm Cu, 15ppb Pt+Pd with S:Ni 1.1
- MTRC009: Cumulative 367m at 0.26% Ni, 133ppm Co, 74ppm Cu, 25ppb Pt+Pd with S:Ni 1.3
- MTRC010: Cumulative 106m at 0.25% Ni, 119ppm Co, 25ppm Cu, 15ppb Pt+Pd with S:Ni 1.0
- MTRC011: Cumulative 110m at 0.24% Ni, 128ppm Co, 75ppm Cu, 26ppb Pt+Pd with S:Ni 1.9
- MTRC012: Cumulative 190m at 0.22% Ni, 124ppm Co, 68ppm Cu, 21ppb Pt+Pd with S:Ni 1.8
- MTRC013: Cumulative 149m at 0.29% Ni, 131ppm Co, 42ppm Cu, 30ppb Pt+Pd with S:Ni 1.0
- MTRC014: Cumulative 158m at 0.26% Ni, 121ppm Co, 37ppm Cu, 20ppb Pt+Pd with S:Ni 0.5
- MTRC015: Cumulative 129m at 0.34% Ni, 156ppm Co, 164ppm Cu, 25ppb Pt+Pd with S:Ni 1.3
- MTRC016: 200m at 0.30% Ni, 139ppm Co, 92ppm Cu, 25ppb Pt+Pd from 103m with S:Ni 1.2
- MTRC017: Cumulative 183m at 0.26% Ni, 132ppm Co, 165ppm Cu, 16ppb Pt+Pd with S:Ni 1.6
- MTRC018: Cumulative 209m at 0.28% Ni, 129ppm Co, 381ppm Cu, 18ppb Pt+Pd with S:Ni 1.3
- MTRC019: 186m at 0.28% Ni, 135ppm Co, 78ppm Cu, 22ppb Pt+Pd from 90m with S:Ni 0.9
- MTRC020: Cumulative 220m at 0.28% Ni, 132ppm Co, 112ppm Cu, 18ppb Pt+Pd with S:Ni 1.1



GLOBALY SIGNIFICANT NICKEL SULPHIDE SYSTEM

JORC EXPLORATION TARGET 350Mt to 2,200Mt at 0.24% to 0.35% Ni, 120ppm to 150ppm Co, S:Ni 1.1 to 1.3



Cautionary Statement on JORC Exploration Target: The Exploration Target has been prepared and reported in accordance with the 2012 edition of the JORC Code. The potential quantity and grade of the Exploration Target is conceptual in nature. There has been insufficient exploration to estimate a Mineral Resource and it is uncertain if further exploration will result in the estimation of a Mineral Resource.

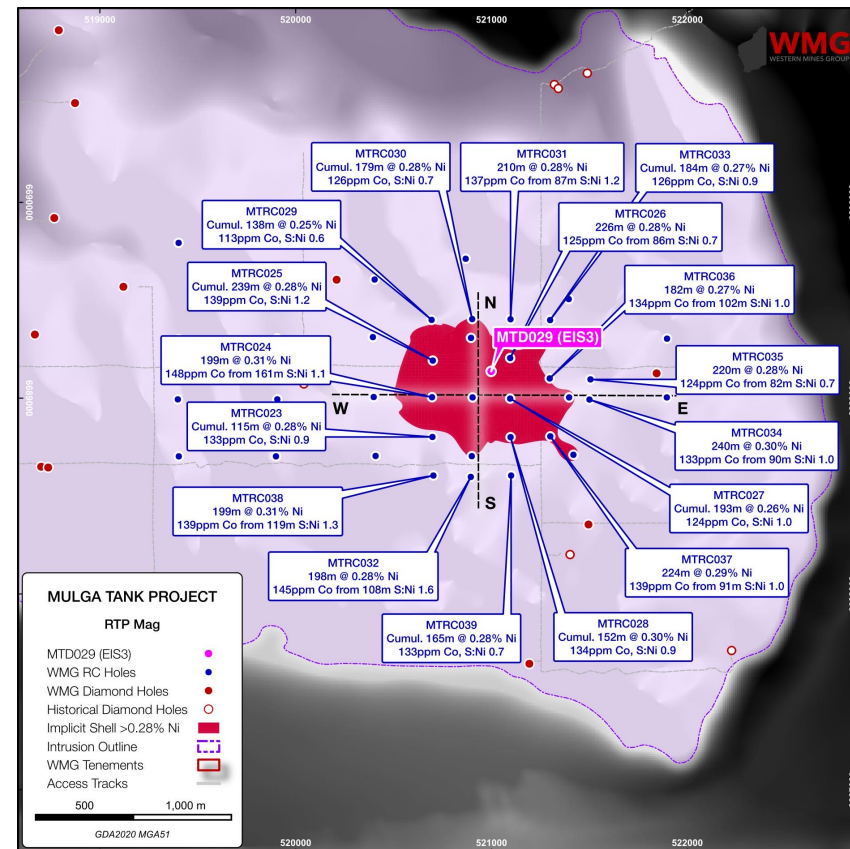
PHASE 2 RC FOCUSED ON THE HIGHER-GRADE CORE

INFILL DRILLING TARGETING FIRST RESOURCE

- Further 17 hole 5,534m RC completed February-March 2024
- **PROGRESSIVELY DE-RISK, IMPROVE CONFIDENCE AND AID RESOURCE EVALUATION**

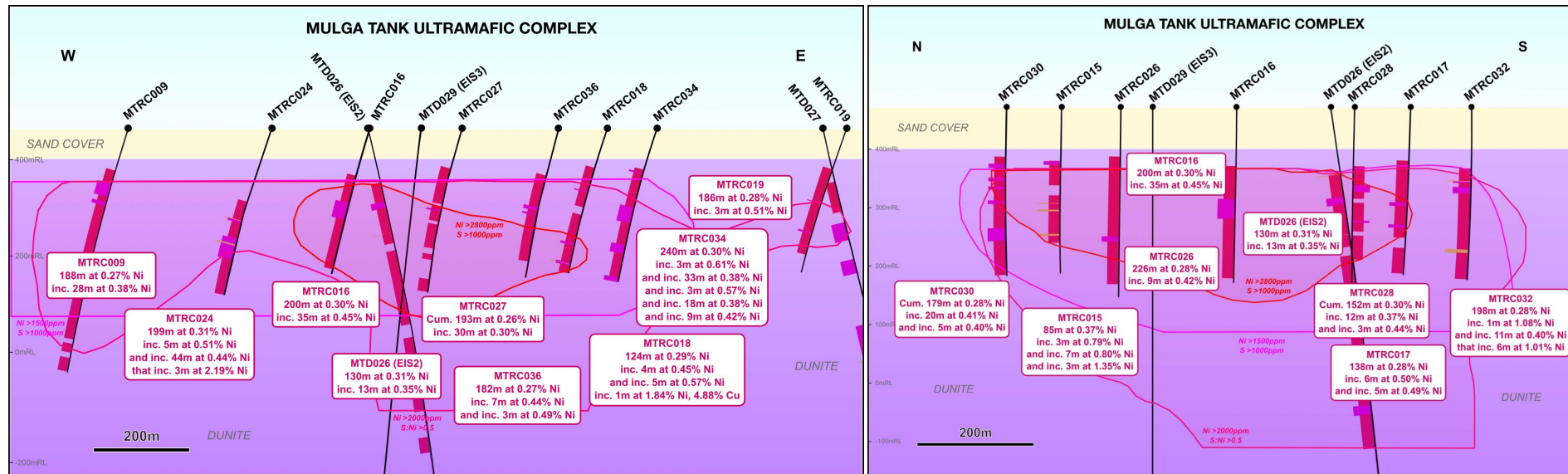
PHASE 2 RC RESULTS:

- MTRC023: Cumulative **115m at 0.28% Ni**, 133ppm Co, 51ppm Cu, 27ppb Pt+Pd with S:Ni 0.9
- MTRC024: **199m at 0.31% Ni**, 148ppm Co, 76ppm Cu, 23ppb Pt+Pd from 161m with S:Ni 1.1
- MTRC025: Cumulative **239m at 0.28% Ni**, 139ppm Co, 72ppm Cu, 19ppb Pt+Pd with S:Ni 1.2
- MTRC026: **226m at 0.28% Ni**, 125ppm Co, 62ppm Cu, 15ppb Pt+Pd from 86m with S:Ni 0.7
- MTRC027: Cumulative **193m at 0.26% Ni**, 124ppm Co, 78ppm Cu, 22ppb Pt+Pd with S:Ni 1.0
- MTRC028: Cumulative **152m at 0.30% Ni**, 134ppm Co, 109ppm Cu, 20ppb Pt+Pd with S:Ni 0.9
- MTRC029: Cumulative **138m at 0.25% Ni**, 113ppm Co, 32ppm Cu, 6ppb Pt+Pd with S:Ni 0.6
- MTRC030: Cumulative **179m at 0.28% Ni**, 126ppm Co, 41ppm Cu, 10ppb Pt+Pd with S:Ni 0.7
- MTRC031: **210m at 0.28% Ni**, 137ppm Co, 104ppm Cu, 24ppb Pt+Pd from 87m with S:Ni 1.2
- MTRC032: **198m at 0.28% Ni**, 145ppm Co, 249ppm Cu, 28ppb Pt+Pd from 108m with S:Ni 1.6
- MTRC033: Cumulative **184m at 0.27% Ni**, 126ppm Co, 82ppm Cu, 18ppb Pt+Pd with S:Ni 0.9
- MTRC034: **240m at 0.30% Ni**, 133ppm Co, 133ppm Cu, 36ppb Pt+Pd from 90m with S:Ni 1.0
- MTRC035: **220m at 0.28% Ni**, 124ppm Co, 63ppm Cu, 25ppb Pt+Pd from 82m with S:Ni 0.7
- MTRC036: **182m at 0.27% Ni**, 134ppm Co, 66ppm Cu, 27ppb Pt+Pd from 102m with S:Ni 1.0
- MTRC037: **224m at 0.29% Ni**, 139ppm Co, 208ppm Cu, 25ppb Pt+Pd from 91m with S:Ni 1.0
- MTRC038: **199m at 0.31% Ni**, 139ppm Co, 260ppm Cu, 27ppb Pt+Pd from 119m with S:Ni 1.3
- MTRC039: Cumulative **165m at 0.28% Ni**, 125ppm Co, 73ppm Cu, 15ppb Pt+Pd with S:Ni 0.7



MULTIPLE 200M INTERSECTIONS OF MINERALISATION

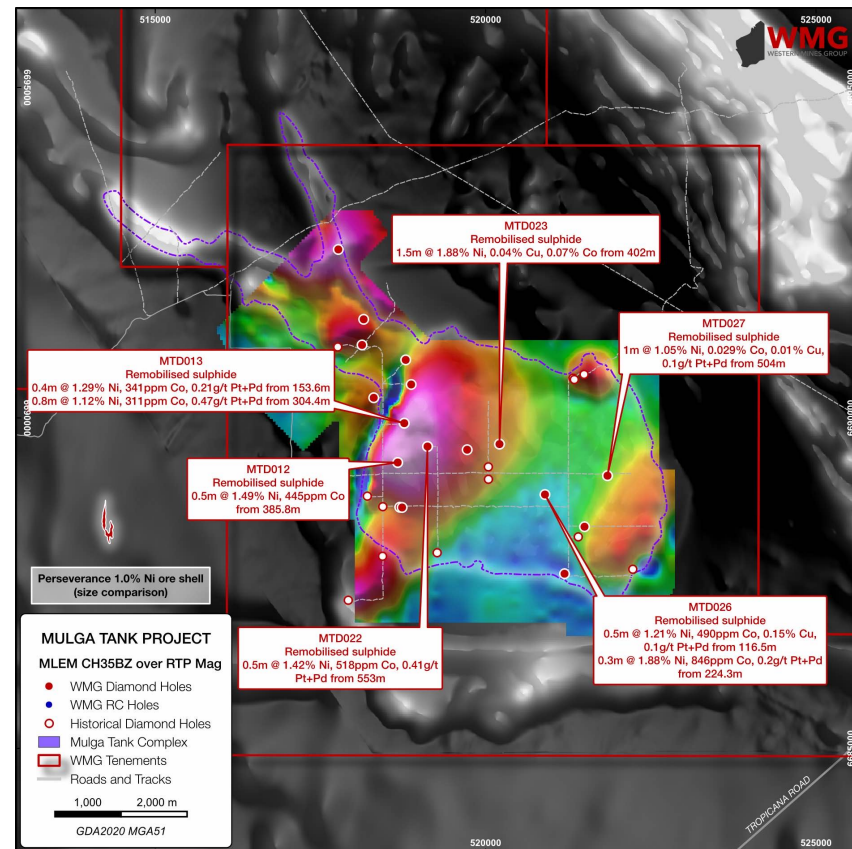
DRILLING AROUND THE HIGHER-GRADE CORE



EVIDENCE FOR PERSEVERANCE-STYLE HYBRID SYSTEM

HIGH-GRADE COMPONENT TO MINERALISATION

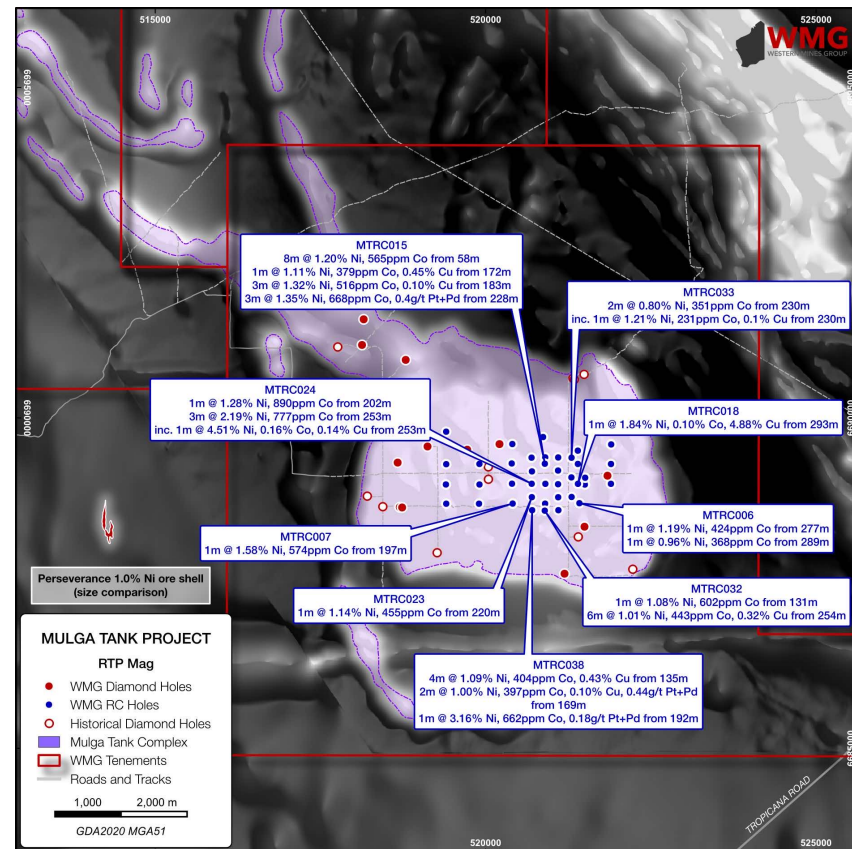
- Multiple zones of remobilised massive nickel sulphide veinlets and in-situ immiscible globules seen across the Complex
- MTD012: 0.5m at 1.49% Ni, 0.04% Cu and 0.04% Co from 385.8m
- MTD013: 1.6m at 0.83% Ni and 0.30g/t Pt+Pd from 304m inc. 0.4m at 1.34% Ni, 0.04% Co and 0.55g/t Pt+Pd from 304.4m and 0.4m at 1.29% Ni and 0.43g/t Pt+Pd from 153.6m
- MTD022: 0.15m at 2.73% Ni, 0.08% Cu, 0.06% Co and 0.10g/t Pt+Pd from 525.15m and 0.5m at 1.42% Ni, 0.05% Cu, 0.04% Co and 0.41g/t Pt+Pd from 553m
- MTD023: 1.5m at 1.88% Ni, 0.04% Cu, 0.07% Co from 402m
- MTD026: 0.5m at 1.21% Ni, 0.05% Co, 0.15% Cu, 0.1g/t Pt+Pd from 116.5m and 0.3m at 1.88% Ni, 0.08% Co, 0.08% Cu, 0.2g/t Pt+Pd from 224.3m
- MTD027: 1.0m at 1.05% Ni, 0.03% Co, 0.01% Cu, 0.1g/t Pt+Pd from 504m
- Sulphide material migrates along faults and fractures – *from where?*



SHALLOW HIGH-GRADE RESULTS IN RC DRILLING

SEMI-MASSIVE NICKEL-COPPER SULPHIDE IN RC

- Higher grade results in the central-eastern area of the Complex
- MTD015: 1m at 1.11% Ni, 516ppm Co, 0.45% Cu, 62ppb Pt+Pd from 172m
3m at 1.32% Ni, 56ppm Co, 0.10% Cu, 34ppb Pt+Pd from 184m
2m at 1.71% Ni, 836ppm Co, 0.10% Cu, 0.4g/t Pt+Pd from 229m
- MTD018: 1m at 1.84% Ni, 0.10% Co, 4.88% Cu, 26ppb Pt+Pd from 293m
- MTD024: 1m at 1.28% Ni, 890ppm Co, 427ppm Cu, 37ppb Pt+Pd from 202m
3m at 2.19% Ni, 777ppm Co, 597ppm Cu, 9ppb Pt+Pd from 253m
inc. 1m at 4.51% Ni, 0.16% Co, 0.14% Cu, 16ppb Pt+Pd from 253m
- MTD032: 1m at 1.08% Ni, 602ppm Co, 379ppm Cu, 83ppb Pt+Pd from 131m
6m at 1.01% Ni, 443ppm Co, 0.32% Cu, 0.12g/t Pt+Pd from 254m
- MTD038: 2m at 1.51% Ni, 539ppm Co, 0.72% Cu, 94ppb Pt+Pd from 135m
1m at 3.16% Ni, 662ppm Co, 385ppm Cu, 0.18g/t Pt+Pd from 192m



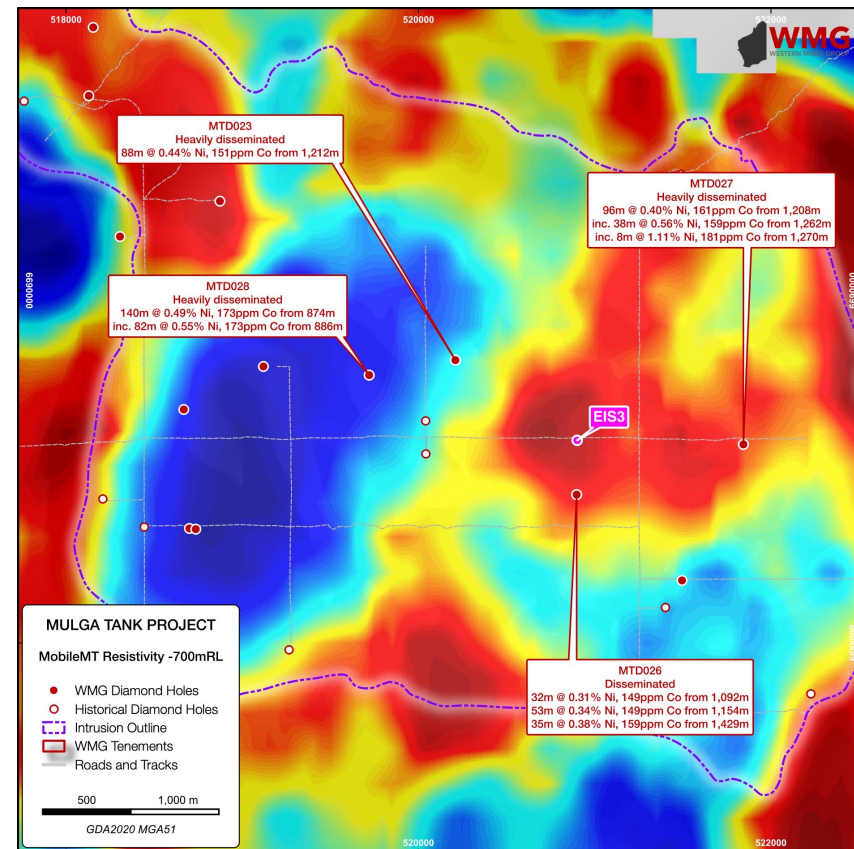
PERSEVERANCE-STYLE CLOUD SULPHIDE AT DEPTH?

COMPELLING CONDUCTIVE MOBILEMT TARGET

- MobileMT survey – deep resistivity mapping highlights conductive target within overall resistive dunite body
- Further deep diamond drilling EIS3 co-funded by WA grant
- Intersections of “cloud” sulphide potentially vectoring towards sulphide enriched keel and/or feeder vent:

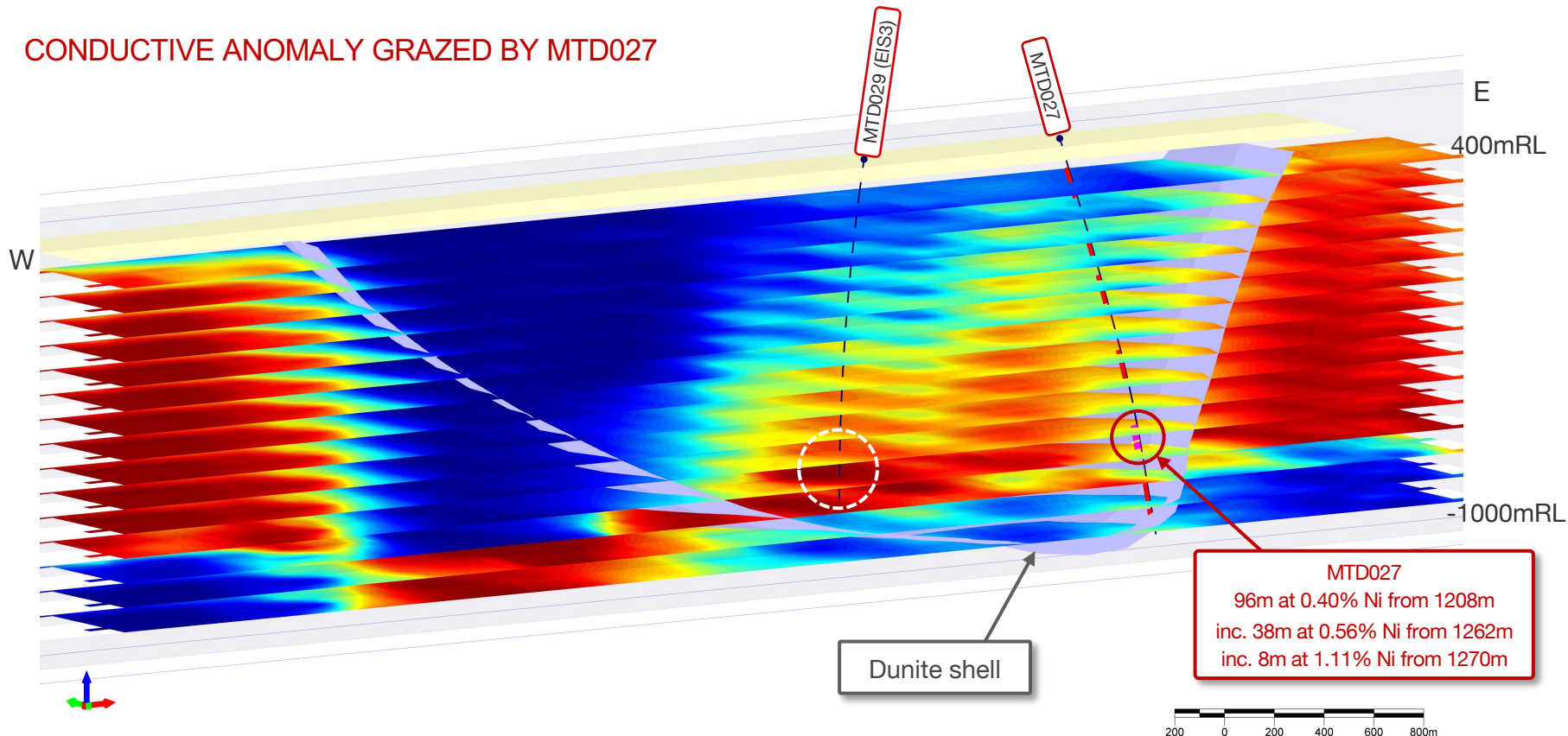
- MTD023: 88m at 0.44% Ni, 151ppm Co from 1,212m
- MTD027: 96m at 0.40% Ni, 161ppm Co from 1,208m
inc. 38m at 0.56% Ni, 159ppm Co from 1,262m
inc. 8m at 1.11% Ni, 181ppm Co from 1,270m
- MTD028: 140m at 0.49% Ni, 161ppm Co from 874m
inc. 82m at 0.55% Ni, 173ppm Co from 886m

TWO FURTHER \$220,000 EIS AWARDS TO TEST IT



MTD029 EIS3 MOBILEMT TARGET

CONDUCTIVE ANOMALY GRAZED BY MTD027

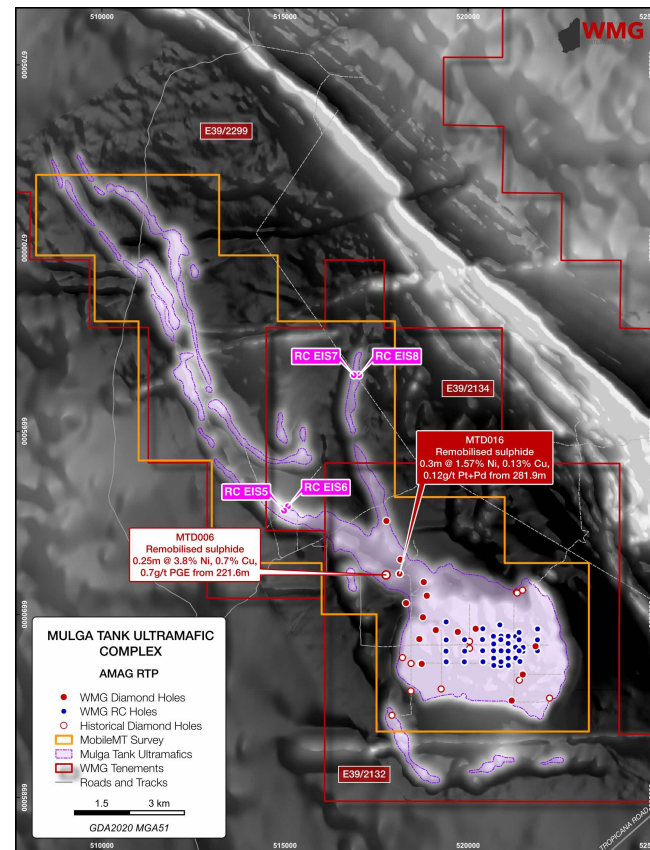


PROSPECTIVE UNEXPLORED KOMATIITE CHANNELS

FERTILE KOMATIITE CHANNELS EXTEND 15KM

- Komatiite sequence with A-B zones logged in the *Panhandle*
- Evidence of prospective high-grade mineralisation:
 - MTD006: 0.25m at 3.8% Ni, 0.7% Cu and 0.7g/t PGE from 221.6m
 - MTD016: 0.3m at 1.57% Ni, 0.13% Cu and 0.12g/t Pt+Pd from 281.9m
- 15km strike of interpreted channels completely unexplored – waiting grant E39/2299
- Recent acquisition of tenement E39/2134 consolidates 100% ownership
- Completed belt-wide MobileMT survey – further geophysics planned

RECENT \$98,000 EIS AWARD TO DRILL FIRST RC HOLES



MULTIPLE DRIVERS TO COMPANY SUCCESS OVER 6-12 MONTHS

PATHWAYS TO SHAREHOLDER VALUE

1 MT KEITH-STYLE

EXTENDING DISSEMINATED
SULPHIDE MINERALISATION

Systematic RC - confirm lateral extent
of disseminated mineralisation ✓

Initial Exploration Target estimate ✓

Sighter metallurgical test work

RESOURCE DRILL OUT
Criteria: >1,000,000t [Ni], >0.25% Ni, top 200-300m

2 PERSEVERANCE-STYLE

TARGETING BASAL MASSIVE
SULPHIDE MINERALISATION

MobileMT 3D interpretation of the
Mulga Tank Complex ✓

Targeted diamond drill program

DHEM surveys

AIM TO DISCOVER SOURCE/S OF REMOBILISED MASSIVE SULPHIDE

3 KAMBALDA-STYLE

HIGH-GRADE CHANNEL
MINERALISATION

Grant of tenement E39/2299

Belt wide geophysics and targeting

First exploration drilling

FIRST BELT WIDE DRILLING OF KAMBALDA-STYLE
KOMATIITE CHANNELS >15KM

Company's exploration plans subject to change without notice

EXCITING DISCOVERY OPPORTUNITY



EXPLORATION PHILOSOPHY

- We believe multiple significant nickel deposits will be found at Mulga Tank
- We strive to do high-quality technical exploration work
- We are frugal with overheads to maximise exploration spend and minimise equity dilution
- We want to change shareholders lives through share price increase not be a lifestyle
- We offer a compelling risk vs reward and leverage to exploration success

FOR FURTHER INFORMATION PLEASE CONTACT OR MEET US AT BOOTH B15


Dr Caedmon Marriott
Managing Director
Western Mines Group Ltd

Email: contact@westernmines.com.au


Tel: +61 475 116 798

*This announcement has been authorised for release to the ASX by the Board of Western Mines Group Ltd
Refer to Western Mines Group Ltd ASX Announcements (slide 4) for relevant disclosures, no material changes to previously disclosed information*

FOLLOW US

@westernmines 

westernmines 

Western Mines Group 

ASX: **WGMG**
www.westernmines.com.au



Rex Turkington *Non-Executive Chairman*

Capital Markets | Corporate Management

Rex is a highly experienced corporate advisor and economist who has worked extensively in the Australian financial services and stockbroking industry, specialising in the natural resources sector and participating in numerous initial public offerings and capital raising for ASX listed companies. Rex is currently Managing Director of South Pacific Securities, an advisory company offering corporate finance and investor relations advice to listed companies. He was previously Chairman of Key Petroleum (ASX:KEY) and Non-Executive Director of TNG Limited (ASX:TNG). Rex is a graduate of the Australian Institute of Company Directors (GAICD) and an associate of the Financial Services Institute of Australia (AFINSA).



Dr Caedmon Marriott *Managing Director*

Exploration | Capital Markets

Caedmon has over 19 years experience in mineral exploration and equity capital markets. Caedmon was previously Managing Director of Western Australian gold and nickel explorer Aldoro Resources (ASX:ARN) and prior to that Managing Director of private exploration company Hanno Resources, responsible for establishing and managing the company's frontier exploration strategy in Western Sahara. Prior to Hanno, Caedmon worked as a buy-side mining analyst at GLG Global Mining Fund, Och-Ziff Capital and JPMorgan Natural Resources Fund. He holds a PhD in Geology, is a Chartered Financial Analyst and a member of the Australasian Institute of Mining and Metallurgy (MAusIMM), the Australian Institute of Geoscientists (AIG) and the Society of Economic Geologists (MSEG).



Francesco Cannavo *Non-Executive Director*

Business Development | Capital Markets

Frank is an experienced public company director and entrepreneur with significant business and investment experience across a number of industries, including mining and natural resources. He has a strong network of investors and industry contacts throughout the Asia-Pacific region and has extensive experience in capital raising, investments and initial public offerings. Frank has been instrumental in assisting several listed and unlisted companies achieve their growth strategies through the raising of capital and the acquisition of assets. Frank is currently a Non-Executive Director of Golden Mile Resources (ASX:G88) and Lightning Metals (ASX:L1M).



Dr Benjamin Grguric *Technical Director*

Exploration | Corporate Management

Ben has extensive experience in mineral exploration and scientific research, with direct involvement in a number of gold and nickel discoveries over the last 30 years. Ben is considered a leading expert on WA nickel sulphide exploration with over 50 peer-reviewed scientific papers. Ben spent his early career with WMC Resources/BHP, in particular at the Mt Keith Nickel Operation, managing brownfield and greenfield nickel sulphide exploration in Western Australia. As Geoscience Manager – Australia for Norilsk Nickel, Ben was responsible for exploration strategy across their portfolio of WA nickel assets and directly involved in the discovery of the West Jordan Type 2 nickel sulphide deposit. Ben holds a PhD in Earth Sciences and is a fellow of the Australian Institute of Geoscientists (AIG) and the Society of Economic Geologists (FSEG).