

# ASX ANNOUNCEMENT

## 2024 AUSTRALIAN CRITICAL MINERALS CONFERENCE

29 May 2024

---



**Arafura Rare Earths Limited (ASX: ARU)** (“Arafura” or the “Company”) is pleased to attach a copy of the presentation delivered by Managing Director and CEO, Darryl Cuzzubbo, at the **2024 Australian Critical Minerals Conference** in Brisbane.

**-ENDS-**

### Further information:

#### Investors

Shaan Beccarelli  
Head of Corporate Affairs & Investor Relations  
+61 455 559 553  
sbeccarelli@arultd.com

#### Media

Luke Forrestal  
GRA Partners  
+61 411 479 144  
luke.forrestal@grapartners.com.au

#### Authorised by:

Catherine Huynh  
Company Secretary



*“Our goal is to be a trusted global leader and supplier of choice for sustainably mined and processed rare earth products, helping our customers deliver clean and efficient technologies. We are committed to delivering positive intergenerational economic, environmental and social benefits to our stakeholders.”*

ASX: ARU

# Arafura Rare Earths

29 May 2024



# Disclaimer

---



This presentation is dated 29 May 2024 and has been prepared by Arafura Rare Earths Limited (“**Arafura**”, “**Arafura Rare Earths**” or the “**Company**”) and is of a summary form only and therefore contains general background information which may not be complete. It should be read in conjunction with, and full review made of Arafura Rare Earths’ most recent financial report and other periodic disclosures and releases lodged with the Australian Securities Exchange (ASX) and available at [www.asx.com.au](http://www.asx.com.au).

This presentation contains certain statements which may constitute “forward-looking statements.” Such statements are only expectations or beliefs and are subject to inherent risks and uncertainties which could cause actual values, results or performance achievements to differ materially from those expressed or implied in this presentation. No representation or warranty, express or implied is made by Arafura Rare Earths that any forward-looking statement contained in this presentation will occur, be achieved or prove to be correct. You are cautioned against relying upon any forward-looking statement.

Content presented in this presentation is provided as at the time of this presentation (unless otherwise stated). Reliance should not be placed on information or opinions contained in

this presentation and, subject only to any legal obligation to do so, Arafura Rare Earths accepts no responsibility to update any person regarding any inaccuracy, omission or change in information in this presentation or any other information made available to a person, nor any obligation to furnish the person with any further information.

This presentation does not constitute an offer of any securities in Arafura Rare Earths, in any jurisdiction, nor an invitation to apply for such securities, in any jurisdiction, and will not form part of any contract for the acquisition of Arafura shares. This presentation is of a general nature and does not take into consideration the investment objectives, financial situation or particular needs of any particular investor and does not provide investment advice or financial product advice. You should obtain professional advice and carry out your own independent investigations and assessment of the information in this presentation (including any assumptions) before acting.

Information in this presentation which is attributed to a third-party source has not been checked or verified by Arafura Rare Earths.

## **Mineral Resources and Ore Reserves**

The information in this presentation that relates

to Mineral Resources is extracted from the Company’s ASX announcement dated 7 June 2017 (Detailed Resource Assessment Completed) and was completed in accordance with the guidelines of the JORC Code (2012). The information in this presentation that relates to Ore Reserves is extracted from the Company’s ASX announcement dated 16 March 2020 (Major Increase in Mine Life for the Nolans Project) and was completed in accordance with the guidelines of the JORC Code (2012). Arafura Rare Earths confirms that it is not aware of any new information or data that materially affects the information included in the original market announcements and that all material assumptions and technical parameters underpinning the estimates in the original market announcements continue to apply and have not materially changed. Arafura Rare Earths confirms that the form and context in which the Competent Person’s findings are presented have not been materially modified from the original market announcements.

## **Production Targets and Forecast Financial Information**

The information in this presentation that relates to production targets and financial information (in relation to capital cost of A\$1,590 million) is extracted from the Company’s ASX

announcement dated 11 November 2022 (Nolans Project Update). The production target is based on 12% Proved Reserves, 62% Probable Reserves and 26% inferred resources as reported in the Company’s ASX announcement dated 11 November 2022. There is a low level of geological confidence associated with inferred mineral resources and there is no certainty that further exploration work will result in the determination of indicated mineral resources or that the production target itself will be realised. Arafura confirms that, other than as set out in this presentation, all material assumptions underpinning the production target and forecast financial information derived from the production target set out in the Company’s ASX announcement dated 11 November 2022 (including any assumptions referred to in the Company’s ASX announcement dated 11 November 2022 that were used from the DFS as set out in the Company’s ASX announcement dated 7 February 2019 (Nolans Project Definitive Feasibility Study) or from the Updated Mining Study as set out in the Company’s ASX announcement dated 16 March 2020 (Major Increase in Mine Life for the Nolans Project)), continue to apply and have not materially changed.

# Agenda

---

- 1 Corporate summary
- 2 Nolans Project location
- 3 Construction ready
- 4 Nolans Project indicative timeline
- 5 Market outlook: structural deficit about to bite
- 6 Market drivers: NdPr pricing has significant upside
- 7 Supply chain risk
- 8 Virtue of Nolans
- 9 Binding offtake target
- 10 Project funding: indicative debt structure & status
- 11 Equity engagement
- 12 A new era: Board and Management refresh
- 13 ESG – an integrated approach
- 14 Nolans: ready to go

# Corporate summary

## Why the Nolans Project?

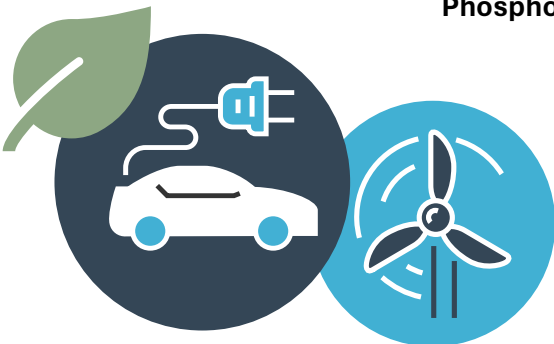
- ✓ fully-permitted<sup>1</sup>
- ✓ scalable
- ✓ construction-ready<sup>3</sup>
- ✓ single-site ore-to-oxide project
- ✓ tier 1 location

**NdPr is essential for the energy transition**

**Demand expected to nearly double by 2032<sup>2</sup>** – development pipeline challenging

**Supply security threat** with ~90% of NdPr supplied by China

<b>Mine life</b>	+38 years
<b>NdPr Oxide</b>	4,440 tpa
<b>SEG/HRE Oxide</b>	474 tpa
<b>Phosphoric Acid</b>	144,393 tpa (54% P <sub>2</sub> O <sub>5</sub> MGA)



Explorer



Developer



Project Execution



**Market Cap**  
**A\$450m<sup>4</sup>**

**Share price**  
**A\$0.20<sup>4</sup>**

**Shares on issue**  
**2,310m**

**Cash**  
**A\$58m<sup>5</sup>**

<sup>1</sup> All Northern Territory Government approvals granted / Awaiting approval of relevant management plans in support of Commonwealth Government approvals already received  
<sup>2</sup> Adamas Intelligence, "Rare Earth Magnet Market Outlook to 2040" (Q2 2023)  
<sup>3</sup> Commencement of construction is subject to finalisation and financial close of debt financing facilities and receipt of equity funding sufficient to proceed to construction

<sup>4</sup> As at 1 May 2024  
<sup>5</sup> Data based on 31 March 2024 Quarterly Report

# Nolans Project location



Stuart Highway 10km east



Water supply 25km southwest



Alice Springs railyard, airport and other services 135km south



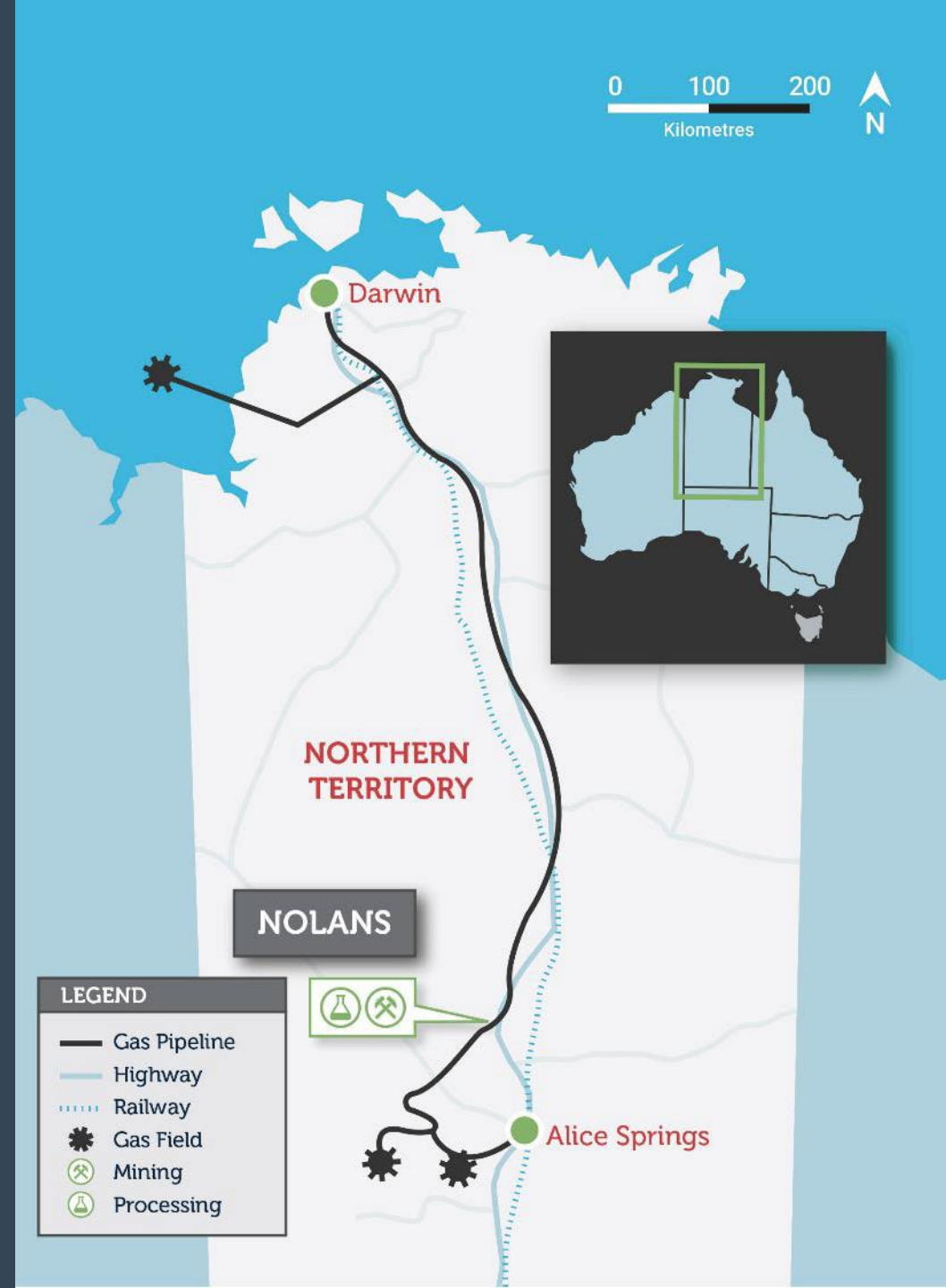
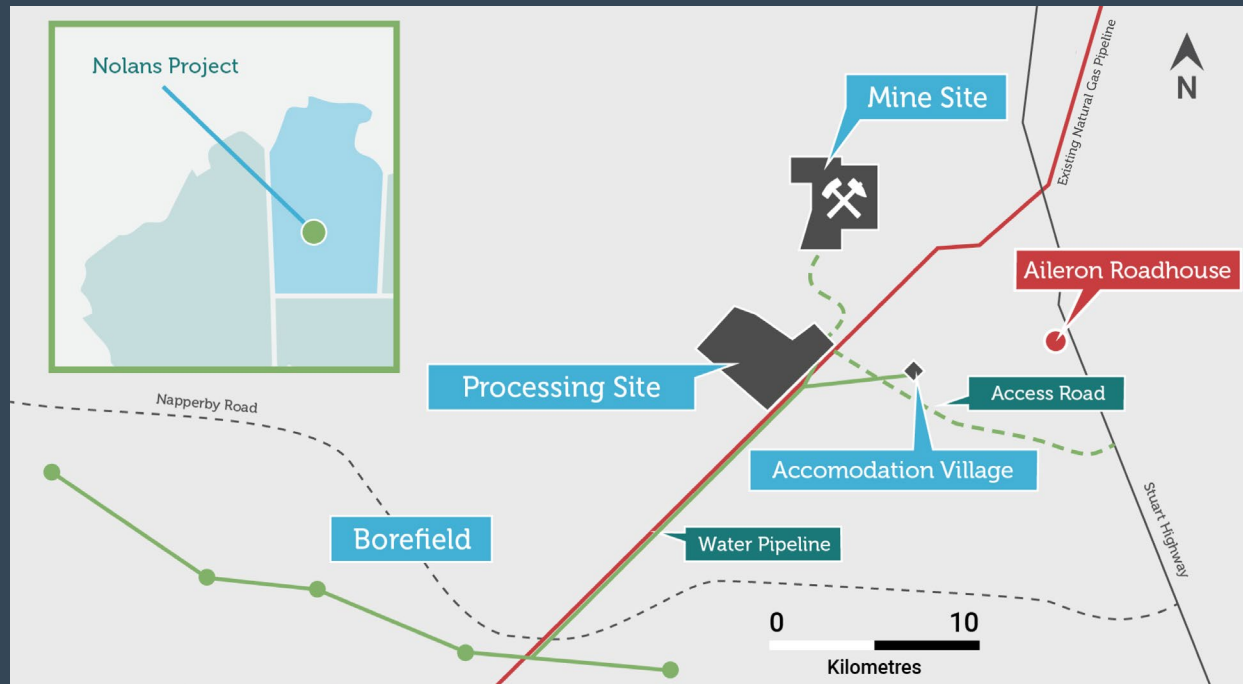
Amadeus natural gas pipeline adjacent to site



Tailings and waste management at site



Deep water port and associated infrastructure at Darwin



# Construction ready

## Once financed, we are ready to go



Environmental permits and approvals in place<sup>1</sup>



Granted mineral lease / license



Access to existing infrastructure



>\$40m on site works de-risking project schedule



Experienced Board and leadership team supported by KBR and Hatch



Construction to commence when funding complete – targeting CY24 2H



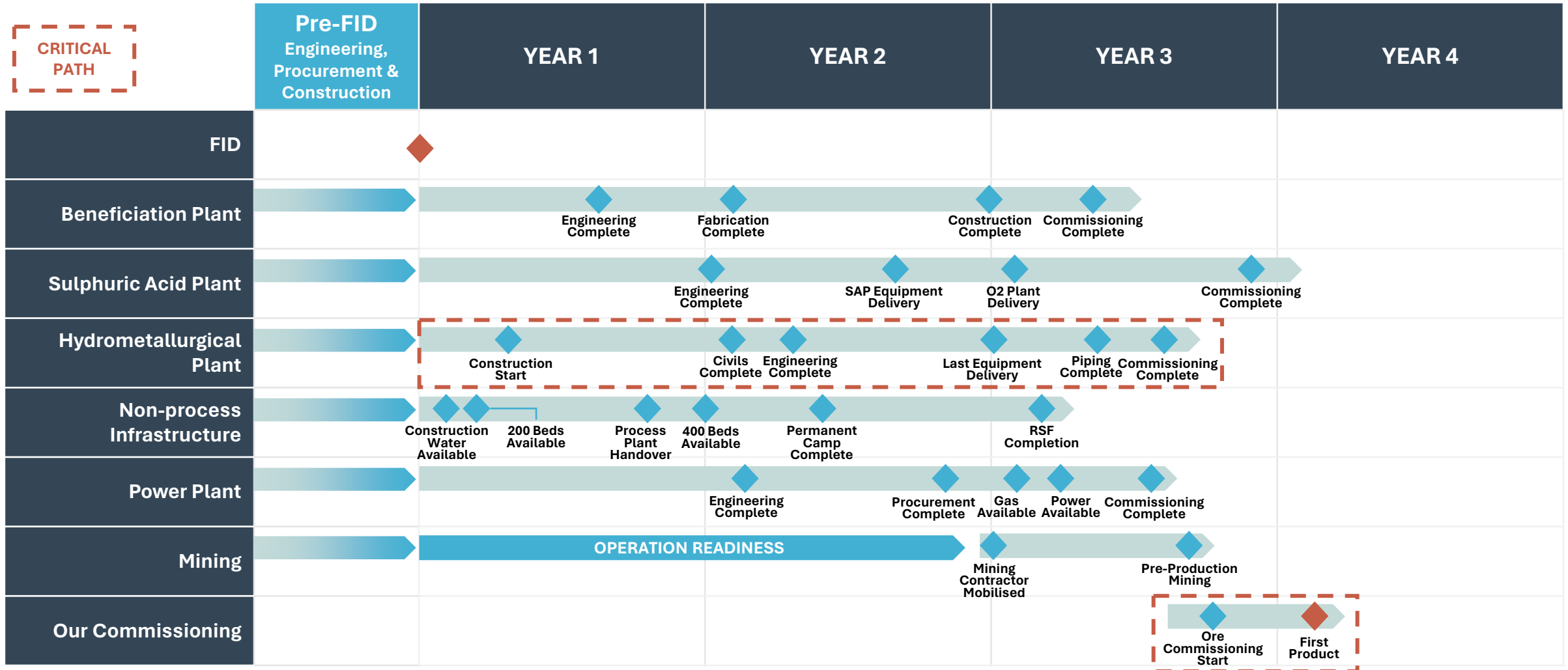
Project well defined with >60% process plant engineering, enabling:

- stable capital forecast
- reduced cash burn rate, sufficient liquidity to CY24 Q4



<sup>1</sup> All Northern Territory Government approvals granted / Awaiting approval of relevant management plans in support of Commonwealth Government approvals already received

# Nolans Project indicative timeline

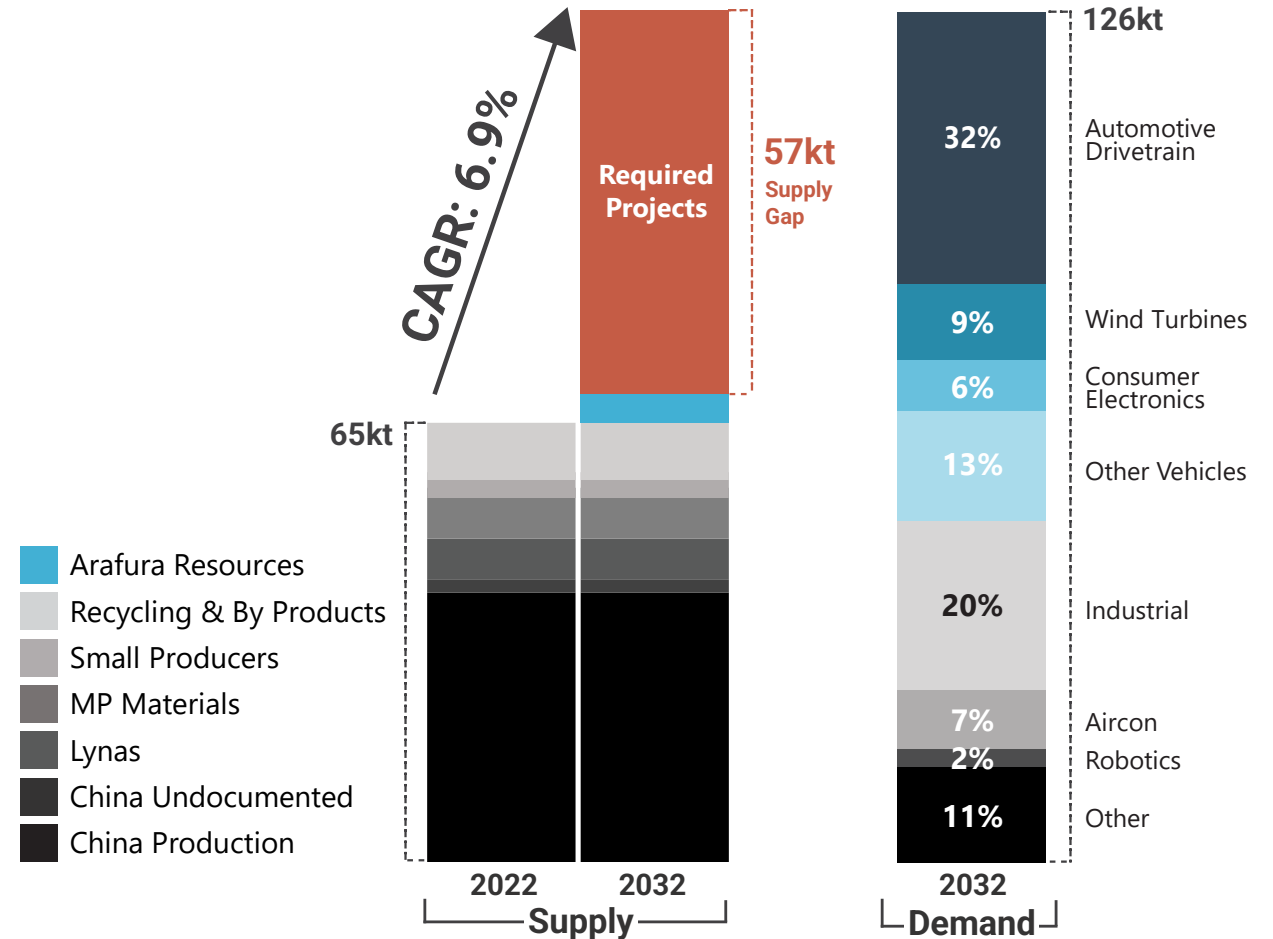




# Market outlook: structural deficit about to bite

Forecast supply gap represents ~88% of global supply today

- The equivalent of > 12 Nolans projects required to close gap
- Average ~18 years required to develop mines from discovery to first commercial production<sup>1</sup>
- Development pipeline is challenging



Source: Arafura internal Supply Demand forecast referencing Wood Mackenzie – Rare Earths Market Study, July 2022; Wood Mackenzie Rare Earth Markets 2022 Outlook to 2050 (September 2022); General Administration of Customs of China via Baiinfo January 2022, Roskill 2021. Supply is primary supply, including monazite and excludes secondary source of NdPr supply from waste magnet production.

<sup>1</sup> Average global mine lead times, S&P Global Market Intelligence report 21 March 2024: 'Average lead time almost 18 years for mines started in 2020 – 23'

# Market drivers: NdPr pricing upside

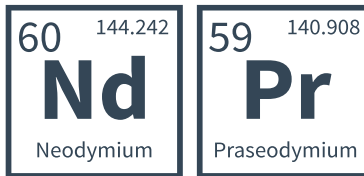
## Remember the semi-conductor chip crisis?<sup>1</sup>

- **Acute competition** to secure chips
- Created **significant risk** to automotive global supply chain



Value of NdPr in one EV with a sale price of ~US\$53,000 is  
~**US\$50**<sup>2</sup>

Lack of supply puts the entire EV global supply chain at risk

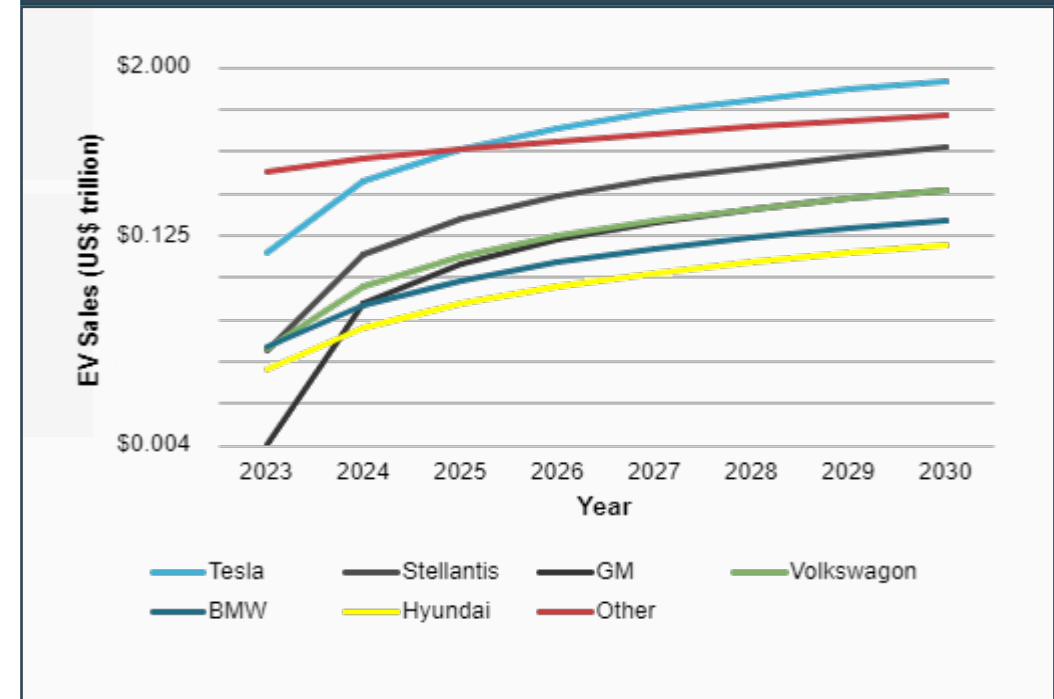


- NdPr comprises less than 0.1% cost in an EV
- Very low substitution risk
- Critical in motor efficiency
- Strongest permanent magnet available today – up to 10x stronger than ferrite magnets<sup>3</sup>

## Big names with big promises are dependent on NdPr

### Selected OEM 2030 Sales Targets<sup>4</sup>

based on 2023 average unit price of US\$53,376



<sup>1</sup> Commodities 2022: Vehicle makers face challenging year amid persistent chip shortage | S&P Global Commodity Insights (spglobal.com)

<sup>2</sup> Source: Macquarie Rare Earths Update 'A delicate balance for NdPr', November 2023. ~\$50 is an estimated average value as at 27 May 2024. Percentage of NdPr will vary in electric vehicles.

<sup>3</sup> Source: Shin-Etsu Rare Earth Magnets <https://www.shinetsu-rare-earth-magnet.jp/e/design/rem.html>

<sup>4</sup> Assumes linear interpolation between each manufacturers' 2023 actual sales and 2030 stated sales target; manufacturers' sales targets are subject to change

# Supply chain risk

## Remember the chips? <sup>1</sup>

Supply security creates significant risk

## Japan has ex-China strategy

Japan has secured significant proportion of ex-China **NdPr** for stable feedstock <sup>2</sup>

## ROW dependant on China

Today the **US, Korea** and **European** EV and wind turbine manufacturers depend on China supply

## Who is next with ex-China supply?

**Arafura** provides unique opportunity for OEMs to achieve long-term NdPr supply security

## Is a truly independent ex-China supply chain possible?

Yes. **Nolans** is one of the most advanced ore to oxide development projects globally. <sup>4</sup>



**~90%**  
Global NdPr is processed in China<sup>3</sup>

**~10%**  
Rest of World  
Majority directed to Japan

*Illustrative purposes only*

<sup>1</sup> Commodities 2022: Vehicle makers face challenging year amid persistent chip shortage | S&P Global Commodity Insights (spglobal.com)

<sup>2</sup> Refer Lynas ASX announcement 7 March 2023 “JARE extends support for Lynas growth plan” and Sojitz News Release 7 March 2023 “Securing Supply of Heavy Rare Earths to Japan with Additional Investment to Lynas”. Arafura estimates ~75% of LYC supply is allocated to Japanese market

<sup>3</sup> Adamas Intelligence, “Rare Earth Magnet Market Outlook to 2040” (Q2 2023)

<sup>4</sup> Average global mine lead times, S&P Global Market Intelligence report 21 March 2024: “Average lead time almost 18 years for mines started in 2020–23”. Internal analysis of development stage of projects assessed based on Company filings.

# Virtue of Nolans: large, scalable, low-cost resource

## Nolans: a differentiated proposition

1

Large, high-grade resource

2

Low unit cost – phosphoric acid credits

3

Located in a Tier 1 mining jurisdiction

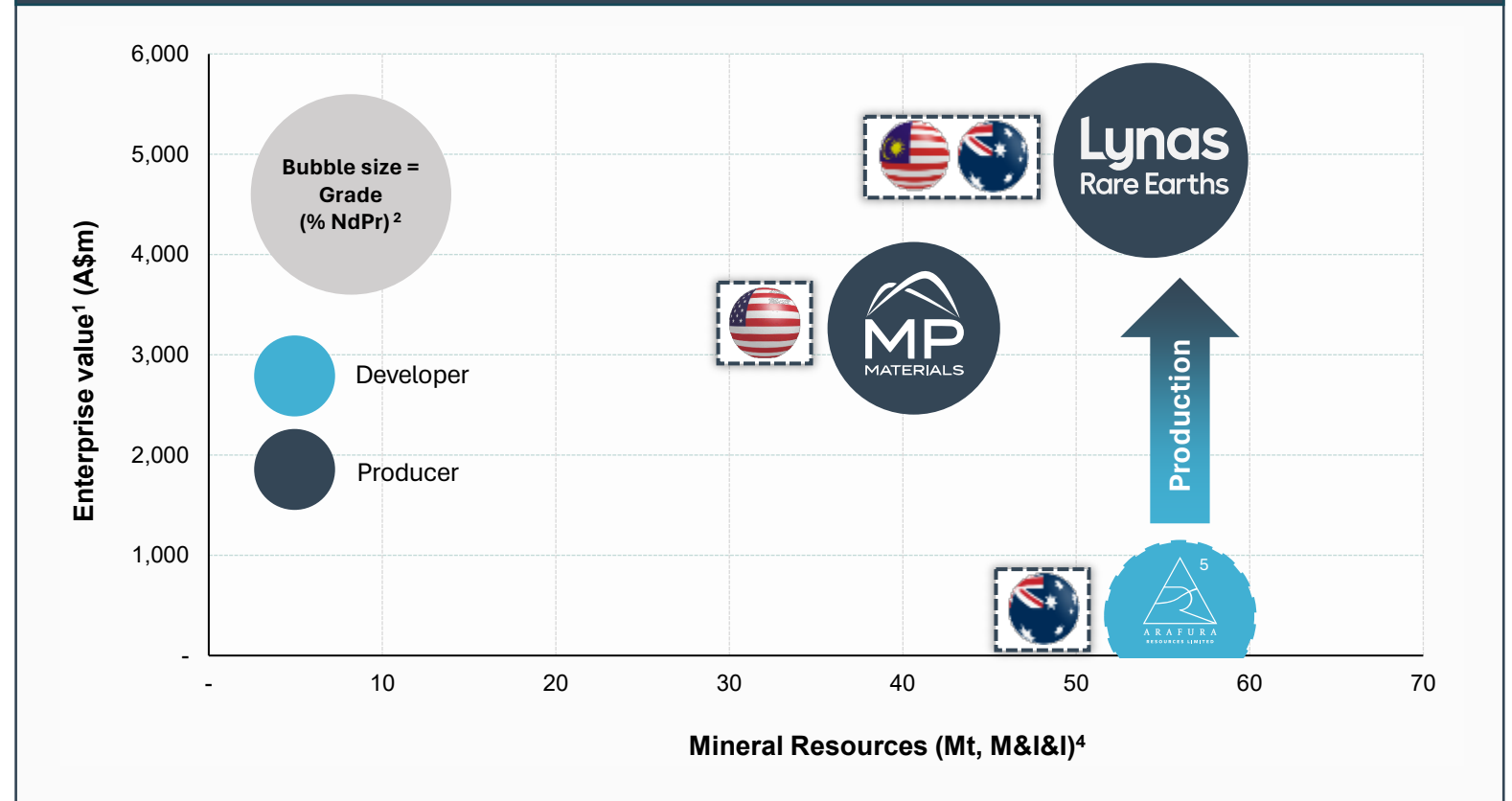
4

Single site ore to oxide



Expansion scoping study underway

## Benchmarking vs Lynas and MP Materials<sup>3</sup>



<sup>1</sup> Enterprise value as at 22 March 2024. Enterprise value calculated as market capitalisation plus debt minus cash. Debt and cash are as at 31 December 2023. There is no guarantee that Arafura's enterprise value following production will be similar to that of Lynas or MP

<sup>2</sup> Based on % TREO multiplied by % NdPr enrichment

<sup>3</sup> Please refer to Appendix 1 for further information; data sources are listed in Appendix 1

<sup>4</sup> Total mineral resources include varying compositions of measured, indicated and inferred; refer to Appendix 1 for a full breakdown of these resource estimates

<sup>5</sup> Lynas and MP Materials are already in production and so are not identical in nature to Arafura; there is no guarantee that Arafura will reach its desired production levels at Nolans in full or at all; production at Nolans is subject to funding and the successful completion of construction

# Binding offtake target

## Focus on strategic value and equity investment

Targeting NdPr users not aligned with ‘Made in China 2025 Strategy’

Offtake discussions now focused on parties bringing strategic value including equity investment

Offtake Discussion Group	Location	NdPr Oxide (Tpa) <sup>1</sup>	% of Binding Offtake Target <sup>4</sup>
<b>Secured Offtake (Binding Agreement)</b>			
Hyundai & Kia	Korea	1,500	43%
Siemens Gamesa RE	Germany	520	15%
<b>Offtake Under Discussion<sup>2</sup></b>			
Contract negotiations	Asia & Europe	2,000	56%
Advanced offtake discussions <sup>3</sup>	Asia & Europe	2,515	71%
<b>TOTAL</b>		<b>6,535</b>	<b>185%</b>

<sup>1</sup> Product may be supplied as NdPr Oxide or Metal equivalent

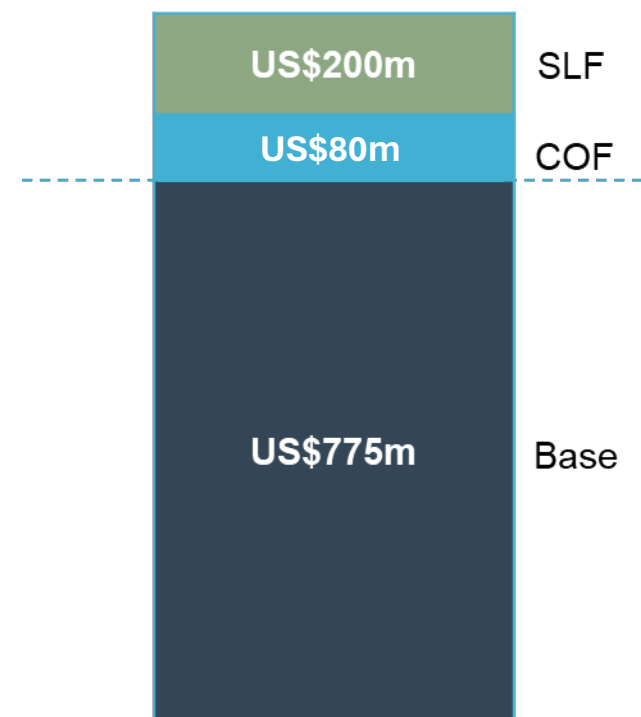
<sup>2</sup> The Company, at this stage, has no certainty as to the timing and likelihood of successfully concluding binding agreements being entered into

<sup>3</sup> ASX announcement will be released once the binding offtake agreement has been executed

<sup>4</sup> Targeting 80% of planned production as binding offtake. Planned Production refers to the average annual production from Nolans, being 4,440tpa (Refer ASX Announcement dated 11 May 2021)

# Project funding: indicative debt structure & status

Facility	Amount (US\$m)	Conditional Approval (US\$m)	Status
<b>Project Finance Facilities</b>			
EFA	125	125	Conditionally Approved <sup>3</sup>
NAIF	100	100	Conditionally Approved (A\$150m) <sup>3</sup>
EDC	300	300	Conditionally Approved <sup>4</sup>
KEXIM	75	-	LoI received 4 Dec 2023 <sup>5</sup>
ECA Covered Tranche	175 <sup>1</sup>	75 <sup>6</sup>	EFA conditional approval <sup>3</sup> RFP responses
<b>Total</b>	<b>775</b>		
Cost Overrun Facility <sup>2</sup>	80	33 <sup>6</sup>	Conditional approvals: NAIF (A\$50m) <sup>3</sup>
Subordinated SLF	200	200	EFA conditional approval <sup>3</sup>
<b>Total Debt Facilities</b>	<b>1,055</b>	<b>833</b>	excluding contingent instrument facility



<sup>1</sup> Targeting commercial bank lending under ECA covered tranches supported by untied loan guarantees from Euler Hermes and KEXIM.

Refer to ASX announcements dated 29 March 2023 and 20 June 2023.

<sup>2</sup> Total Cost Overrun funding of US\$160m, 50% funded by senior debt with remaining 50% to be funded by equity.

<sup>3</sup> Refer to ASX announcement dated 14 March 2024.

<sup>4</sup> Refer to ASX announcement dated 27 May 2024

<sup>5</sup> Refer to ASX announcement dated 4 December 2023.

<sup>6</sup> EFA allocations across ECA Covered Tranche and COF to be agreed.

## Cost Overrun Facility (COF) Standby Liquidity Facility (SLF)

- US\$80m funded by senior debt<sup>2</sup>

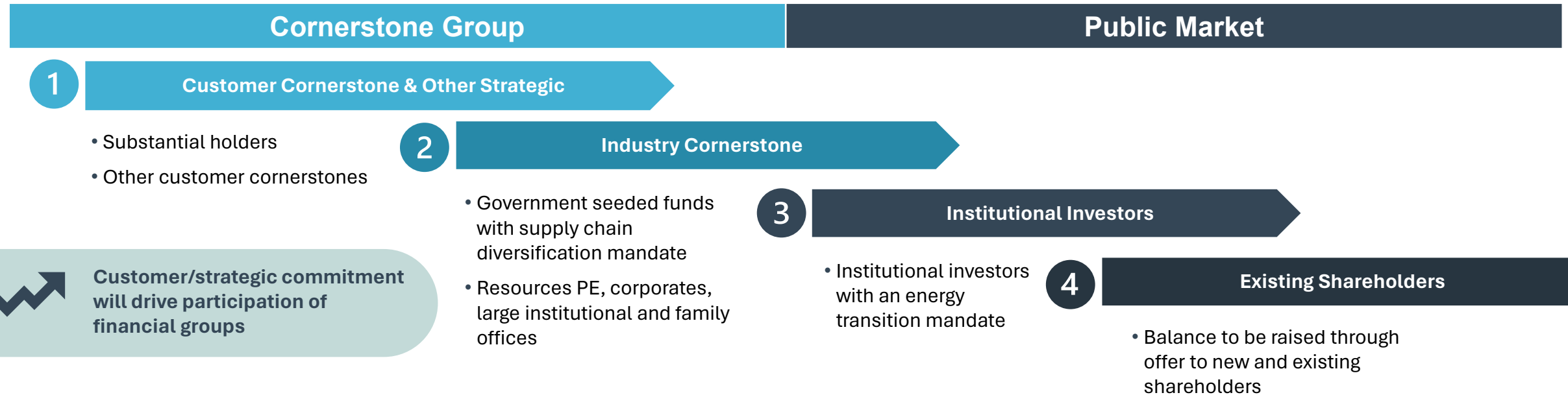
- EFA US\$200m, 15-year, subordinated debt facility

### Purpose:

Fund project and ramp-up costs, excluding senior debt financing costs, prior to project completion

# Equity engagement

## Potential build-up of equity capital



# Refreshed leadership team and Board



**Mark Southey**  
Non-Executive Chairman



**Darryl Cuzzubbo**  
Managing Director & Chief  
Executive Officer



**Chris Tonkin**  
Non-Executive Director



**Cathy Moises**  
Non-Executive Director



**Michael Spreadborough<sup>1</sup>**  
Non-Executive Director



**Roger Higgins<sup>1</sup>**  
Non-Executive Director



**Peter Sherrington**  
Chief Financial Officer



**Stuart Macnaughton**  
Chief Operating Officer



**Fiona Blakely**  
Chief People Officer



**Robert Gerard**  
Project Director



**Tanya Perry**  
Head of Sustainability &  
Environment

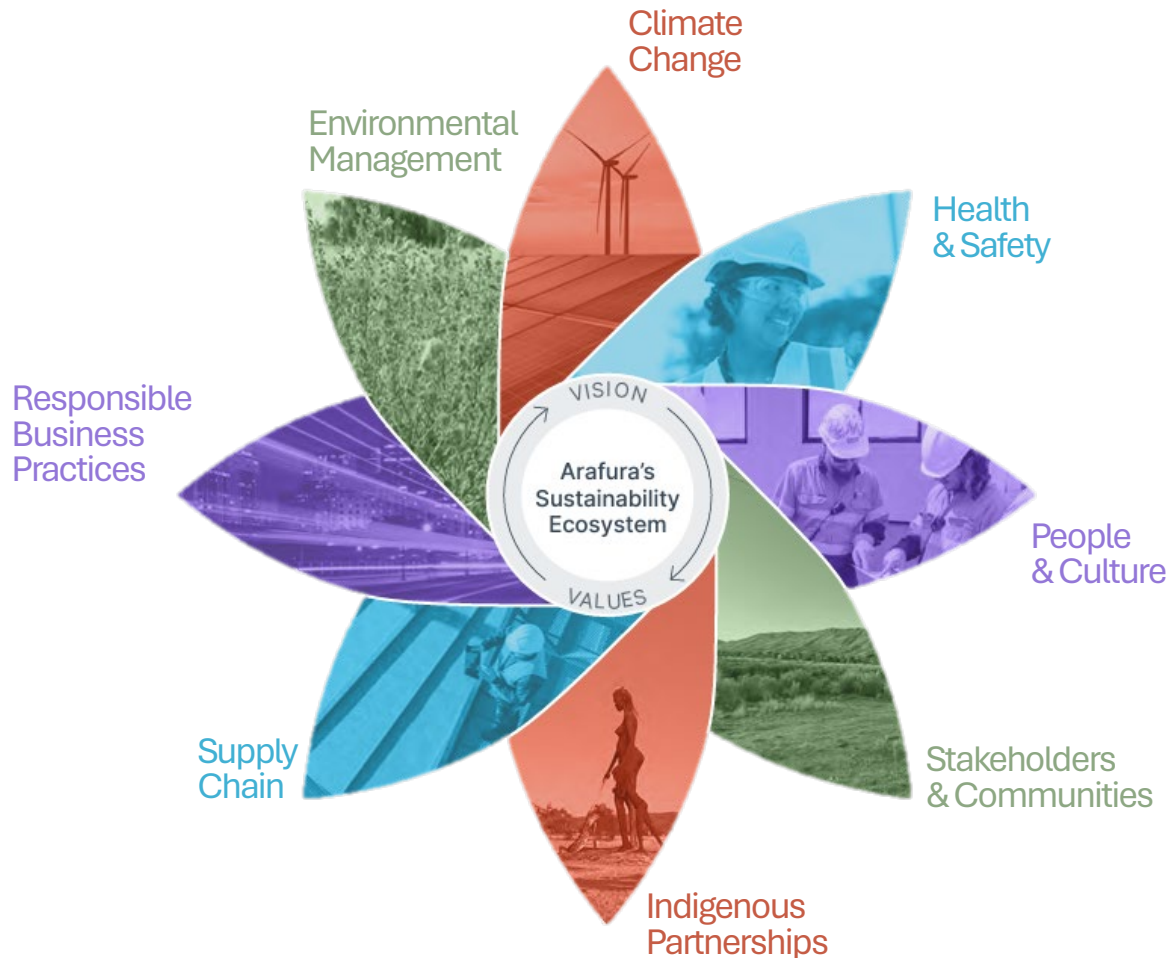


**Shaan Beccarelli**  
Head of Corporate Affairs  
& Investor Relations



# ESG – an integrated approach focusing upon what matters most

As a greenfield developer we have a unique opportunity to create and deliver value for all stakeholders



We recognise the interdependencies of ESG in our business



We are building capability to deliver best-practice ESG



We are aligning our governance to international standards



We are poised to make a positive difference in the communities where we operate and live

# The Nolans Project is ready to go



Definitive Feasibility Study



Native Title Agreement



Mineral Leases granted



Federal government approvals



Northern Territory government approvals



Early works completed



68% of targeted senior debt funding secured – EDC, NAIF, EFA <sup>1</sup>



Remaining debt well progressed



58% of 80% offtake target secured <sup>2</sup>



Remaining offtake well progressed



Equity initiated

## Shovel Ready



<sup>1</sup> Refer ASX announcement 27 May 2024

<sup>2</sup> Refer ASX announcement 29 March 2023

ASX: ARU

## Contact

Level 6, 432 Murray St  
Perth WA 6000

PO Box 5773  
St Georges Terrace  
Perth WA 6831

T: +61 8 6370 2800

E: [arafura@arultd.com](mailto:arafura@arultd.com)  
(All corporate and general enquiries)

E: [nolansproject@arultd.com](mailto:nolansproject@arultd.com)  
(Nolans Project enquiries only)



# Appendices

# Appendix 1: pure-play rare earth peer benchmarking



Company	Project	Location	Stage	Product	EV (A\$m) <sup>1</sup>	Mineral Resources (Mt)	TREO grade (%)	NdPr enrichment (%)	NdPr grade(%) <sup>2</sup>	Contained NdPr (Mt)	NdPr Production	Source(s)
Arafura	Nolans	Australia	Construction	Oxide	537	Measured: 4.9 Indicated: 30.0 Inferred: 21.0 Total: 56.0	Measured: 3.2% Indicated: 2.7% Inferred: 2.3% Total: 2.6%	Measured: 26.1% Indicated: 26.4% Inferred: 26.5% Total: 26.4%	Measured: 0.84% Indicated: 0.71% Inferred: 0.61% Total: 0.69%	0.38	4.44	ASX announcement: "Nolans Project update" on 11 November 2022
Lynas	Mount Weld	Australia	Producing	Oxide	4,959	Measured: 17.1 Indicated: 11.4 Inferred: 25.9 Total: 54.3	Measured: 7.6% Indicated: 5.1% Inferred: 3.6% Total: 5.2%	Total: 22.8% <sup>4</sup>	Total: 1.19%	0.64	12.00	ASX announcement: "Annual Report FY2023" on 12 October 2023 ASX announcement: "Resources and Reserves Increase" on 6 August 2018
MP	Mountain Pass	USA	Producing	Oxide	3,269	Measured <sup>3</sup> : 0.1 Indicated <sup>3</sup> : 31.5 Inferred <sup>3</sup> : 9.1 Total: 40.6	Measured <sup>3</sup> : 9.5% Indicated <sup>3</sup> : 6.2% Inferred <sup>3</sup> : 5.1% Total: 5.9%	Total: 15.7%	Total: 0.93%	0.38	6.00	SEC filing: "FORM 10-K" from 28 February 2022

<sup>1</sup> Enterprise value as at 22 March 2024. Enterprise value calculated as market capitalisation plus debt minus cash. Debt and cash are as at 31 December 2023

<sup>2</sup> Based on % TREO multiplied by % NdPr enrichment

<sup>3</sup> Resources reported exclusive of Reserves. Measured Resource assumed to be equal to Proven Reserves. Indicated Resource assumed to include Probable Reserves

<sup>4</sup> Calculated as contained NdPr reserves (386kt) divided by contained TREO reserves (1,690kt)