

11 June 2024

## DRILLING COMPLETED AT MT BERGHAUS

### HIGHLIGHTS

- Successfully completed maiden aircore drilling program at Mt Berghaus
- Drilling totalled 7,357 metres for 126 holes across the tenements
- Assays expected July 2024

Mantle Minerals Limited (ASX:MTL) (“the Company”) is pleased to advise that the Company has completed its maiden aircore drilling program on the Mt Berghaus gold exploration tenements E47/4531 and E45/5899 (Figure 1). Assays are expected in July 2024. The program drilled 7,357m for 126 holes, to test the intersections of interpreted structures and stratigraphy, which could be related to De Grey Mining Ltd’s (ASX: DEG) discovery of Hemi and other deposits immediately to the south of Mantle’s tenements. The target areas are outlined in Figure 1.

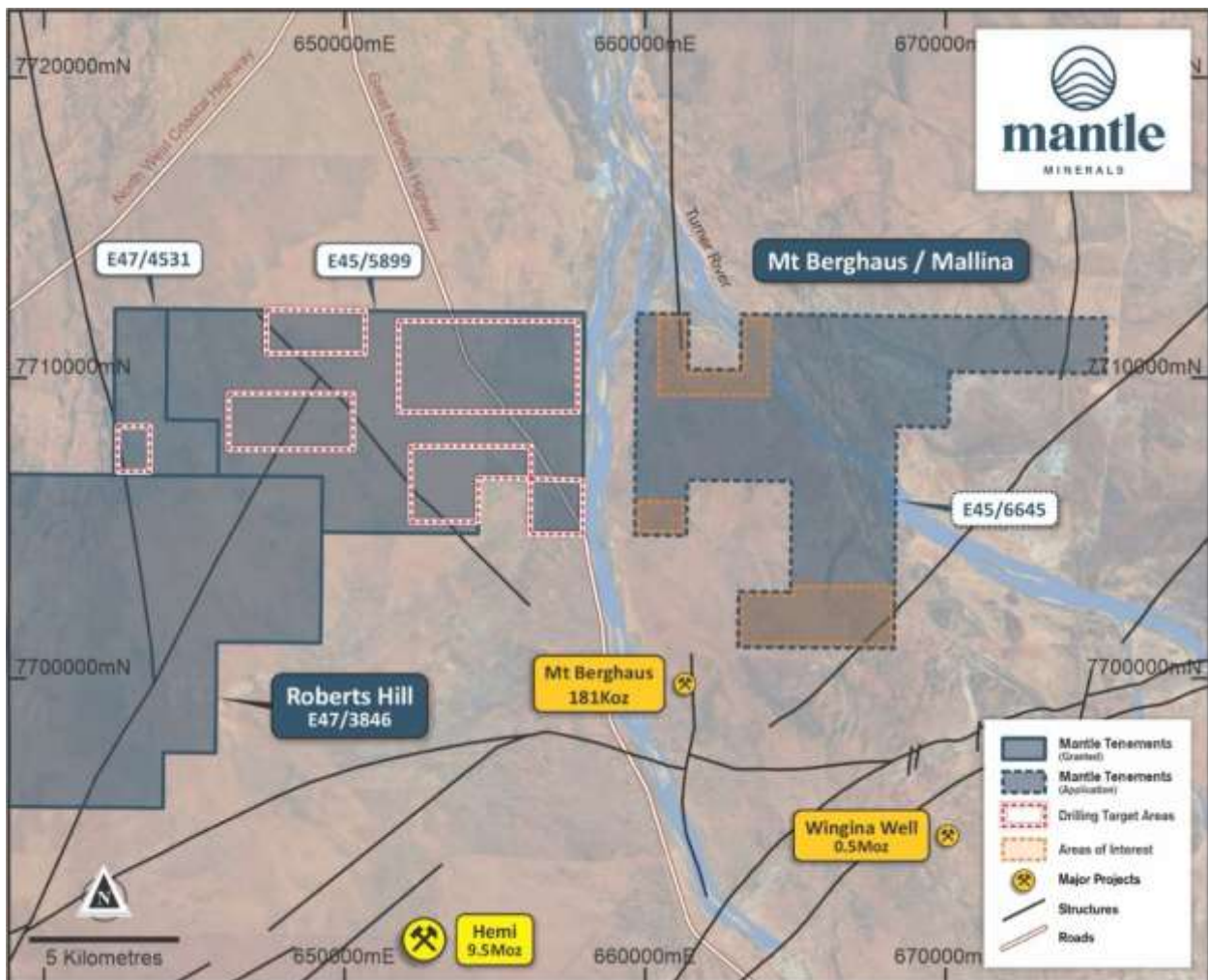


Figure 1: Mount Berghaus Map showing drilling target areas

Mantle hopes to intersect coincident gold mineralisation and arsenic for follow up with reverse circulation drilling at deeper levels. The Hemi deposit was discovered by reverse circulation drilling intersections around the 2g/t gold level, below aircore drilling intersections as low as 0.2g/t gold. As a result, two different phases of drilling are required.

The region is covered by sediments that can conceal any potential gold deposits, so the first phase is aircore drilling which aims to get below these sediments and confirm the presence of structures and stratigraphy for high potential drilling targets. However, geological interpretation in the region suggests that gold has been leached from the oxidized near surface rocks that aircore drilling can access, which results in low gold grades, so a second phase of deeper reverse circulation drilling is required, to intersect ore grade mineralisation.

Mantle intends to use any intersections from aircore drilling at Mt Berghaus, to target reverse circulation drilling later in the year.



*Figure 2: Drill Rig at Mt Berghaus*

## Background

Mantle is exploring for gold immediately to the North of De Grey Mining's discovery of over 12.7M ounces of gold at Hemi and its surrounding deposits (Figure 2). The Company has intersected gold and arsenic on its Roberts Hill tenements, which is consistent with Hemi style mineralisation. The recent granting of the Mt Berghaus tenements provides Mantle with a unique opportunity to be the first to drill in this area and believes there are structures and stratigraphy on the tenements, which could be related to the Hemi deposit. As a result, the Company has now completed aircore drilling and intends to follow up with reverse circulation drilling at Mt Berghaus and Roberts Hill later this year.

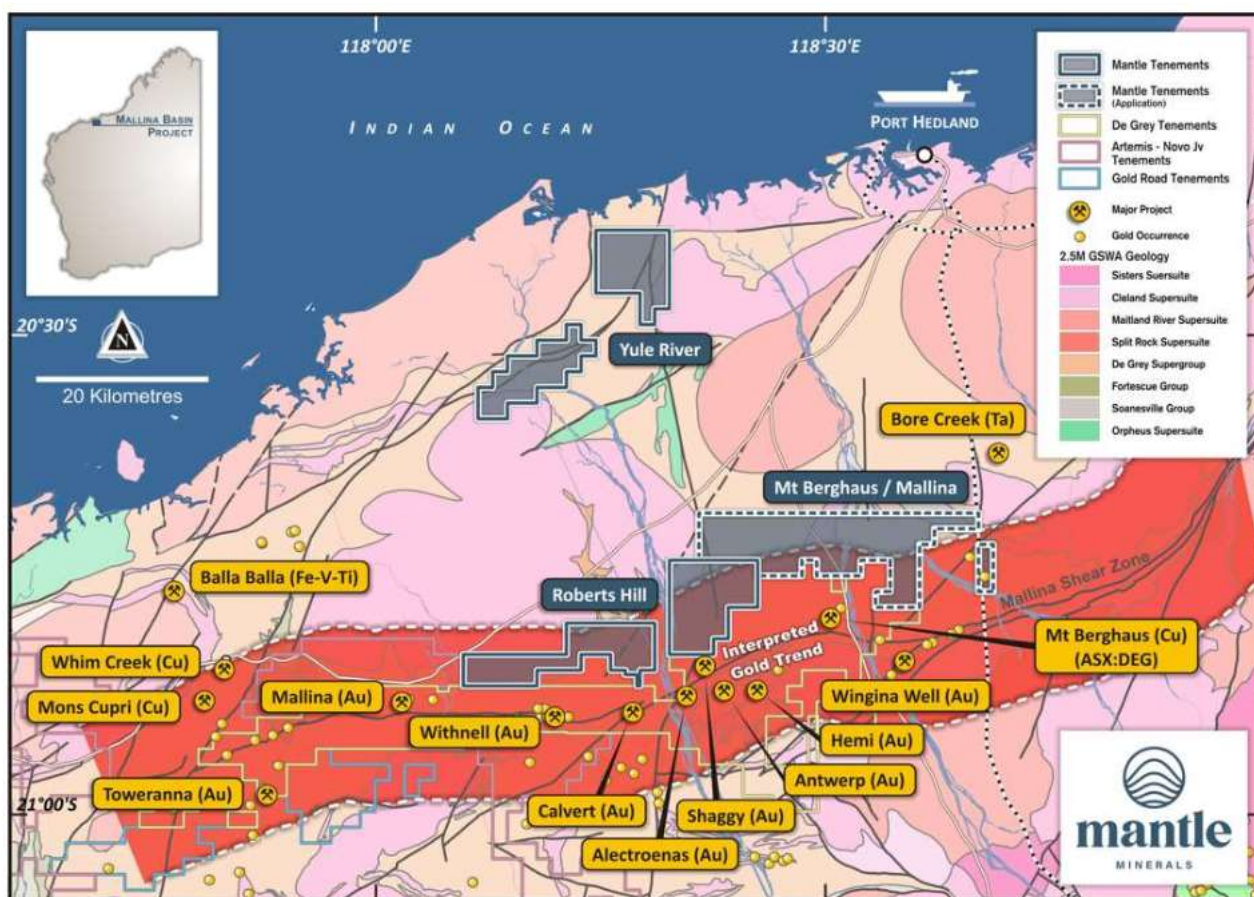


Figure 3: Project location map and proximity to the interpreted gold trend

This announcement has been authorised for release by the Mantle Minerals Limited Board of Directors.

### For Further Information, please contact:

#### Nick Poll

Executive Chairman  
+61 8 6102 2656

#### Johnathon Busing

Non-Executive Director/Company Secretary  
+61 8 6165 885