

WHITE CLIFF

MINERALS

ADVANCING A TRULY CLEAN ENERGY MINERALS AND METALS ODYSSEY

CORPORATE
PRESENTATION

ASX: WCN

COMPETENT PERSON STATEMENT & DISCLAIMER



The information contained in this presentation has been prepared by White Cliff Minerals Limited (the Company).

The information in this report that relates to exploration results is based on, and fairly represents information and supporting documentation prepared by Mr Roderick McIlree, a Competent Person who is a Fellow of the Australasian Institute of Mining and Metallurgy. Mr McIlree is a Director of White Cliff Minerals Limited. Mr McIlree has sufficient experience that is relevant to the style of mineralisation and type of deposit under consideration and to the activity being undertaken to qualify as a Competent Person as defined in the 2012 Edition of the "Australasian Code for Reporting of Exploration Results, Mineral Resource and Ore Reserves". Mr McIlree consents to the inclusion in this report of the matters based on his information in the form and context in which it appears.

To the maximum extent permitted by law, the Company and its related bodies corporate, affiliates and each of their respective directors, officers, partners, employees, advisers and agents and any other person involved in the preparation of the presentation disclaim all liability and responsibility (including without limitation any liability arising from fault or negligence) for any direct or indirect loss or damage which may arise or be suffered through use or reliance on anything contained in, or omitted from, the presentation.

No representation or warranty, express or implied, is given as to the fairness, accuracy, completeness, likelihood of achievement or reasonableness of any assumptions, forecasts, prospective statements or returns contained in the presentation. Such assumptions, forecasts, prospective statements or returns are by their nature subject to significant uncertainties and contingencies, have been based on current expectations about future events and are subject to risks, uncertainties and assumptions that could cause actual results to differ materially from the expectations described. The Company has no responsibility or obligation to inform you of any matter arising or coming to its notice, after the date of this presentation document, which may affect any matter referred to in the presentation.

All statements other than statements of historical fact included in this presentation including, without limitation, statements regarding future plans and objectives of White Cliff, are forward-looking statements. Forward-looking statements can be identified by words such as "anticipate", "believe", "could", "estimate", "expect", "future", "intend", "may", "opportunity", "plan", "potential", "project", "seek", "will" and other similar words that involve risks and uncertainties. These statements are based on an assessment of present economic and operating conditions, and on a number of assumptions regarding future events and actions that are expected to take place. Such forward-looking statements are not guarantees of future performance and involve known and unknown risks, uncertainties, assumptions and other important factors, many of which are beyond the control of the Company, its directors and the management of White Cliff that could cause the Company's actual results to differ materially from the results expressed or anticipated in these statements.

White Cliff cannot and does not give any assurance that the results, performance or achievements expressed or implied by the forward-looking statements contained in this presentation will actually occur and investors are cautioned not to place any reliance on these forward-looking statements. The Company does not undertake to update or revise forward-looking statements, or to publish prospective financial information in the future, regardless of whether new information, future events or any other factors affect the information contained in this presentation, except where required by applicable law and stock exchange listing requirements.

You must not rely on the presentation provided but make your own independent assessment of the presentation and seek and rely upon your own independent taxation, legal, financial or other professional advice in relation to the presentation and any action taken on the basis of the presentation. All information in this presentation is current as at 11 June 2024.

This presentation relies on information previously released to the Australian Securities Exchange:

28 May 2024 "Imminent Field Activities for Nunavut Cu-Au-Ag Project"
20 May 2024 "Priority Targets Confirmed at Great Bear Lake (Radium Point)"
25 March 2024 "Multiple High-Grade Uranium & Copper Targets at Radium Point"
15 January 2024 "Large Scale Uranium Project Secured in Canada"
8 November 2023 "White Cliff Secures Multiple High Grade Copper Projects"

27 March 2023 "Sale of Yinnetharra REE/Li Project to Minerals 260 Ltd"
24 October 2022 "Strategic Acquisition of Lake Tay Project"
23 November 2021 "Highly Prospective Projects Acquisition and New Tenement Applications"
29 October 2020 "Maiden 42,400 Ounces JORC Mineral Resource at Reedy South"

INVESTOR HIGHLIGHTS



FUTURE FACING METALS

White Cliff has an **in-demand**, diversified Energy Metals portfolio featuring **uranium** (U), **copper** (Cu), **nickel** (Ni), **gold** (Au), **silver** (Ag), **lithium** (Li) and **rare earths** (REE).



TIER 1 JURISDICTIONS

The Company has ground in Western Australia and Canada, both **supportive jurisdictions** with enabling regulatory frameworks for exploration and development.



SECURE FINANCIAL POSITION

We have **no debt** and about A\$4.5m million in cash and listed investments¹.



PROGRESS

Our strategy in Canada for **uranium, copper, gold** and **silver**, complimenting the ongoing field work in Western Australia will provide **strong and ongoing news flow**.



ESG

We have demonstrated **commitment** to **responsible resource development**.



STRONG BOARD & MANAGEMENT

The company has the **right-sized** team, with significant **frontier exploration experience**, corporate and technical **expertise**.

¹ as at 31 May 2024, includes sales of Yinnetharra project to Minerals 260 (ASX: MI6) for 7 million shares (see announcement: 27 March 2023)

CORPORATE OVERVIEW



CAPITALISATION DATA¹

A\$0.021
Share Price A\$

1,624M
Basic S/O

A\$34.11M
Market Cap

A\$3.47M²
Cash

A\$29.56M³
Enterprise Value

BOARD & EXECUTIVE

Rod McIlree EXECUTIVE CHAIRMAN

Rod is an Australian geologist with extensive experience in developing large-scale projects. With extensive knowledge in M&A, international logistics and small-cap fundraisings, he provides the leadership for this new phase of growth of the company

Eric Sondergaard EXECUTIVE DIRECTOR

Eric is a registered Professional Geoscientist and a graduate of the University of Calgary in Canada. Eric brings over 20 years of operational experience in the mining industry, including significant expertise in frontier exploration and project management.

Troy Whittaker MANAGING DIRECTOR

Troy is an executive with more than 20 years of experience, spanning successful international project evaluation activities, and the development and operation of multibillion dollar assets globally across a broad range of commodities

Dan Smith NON-EXECUTIVE DIRECTOR

Dan has over 15 years primary and secondary capital markets expertise, and has advised on, and been involved in, a number of IPOs, RTOs and capital raisings on the ASX, NSX and AIM markets



SHAREHOLDER INFO

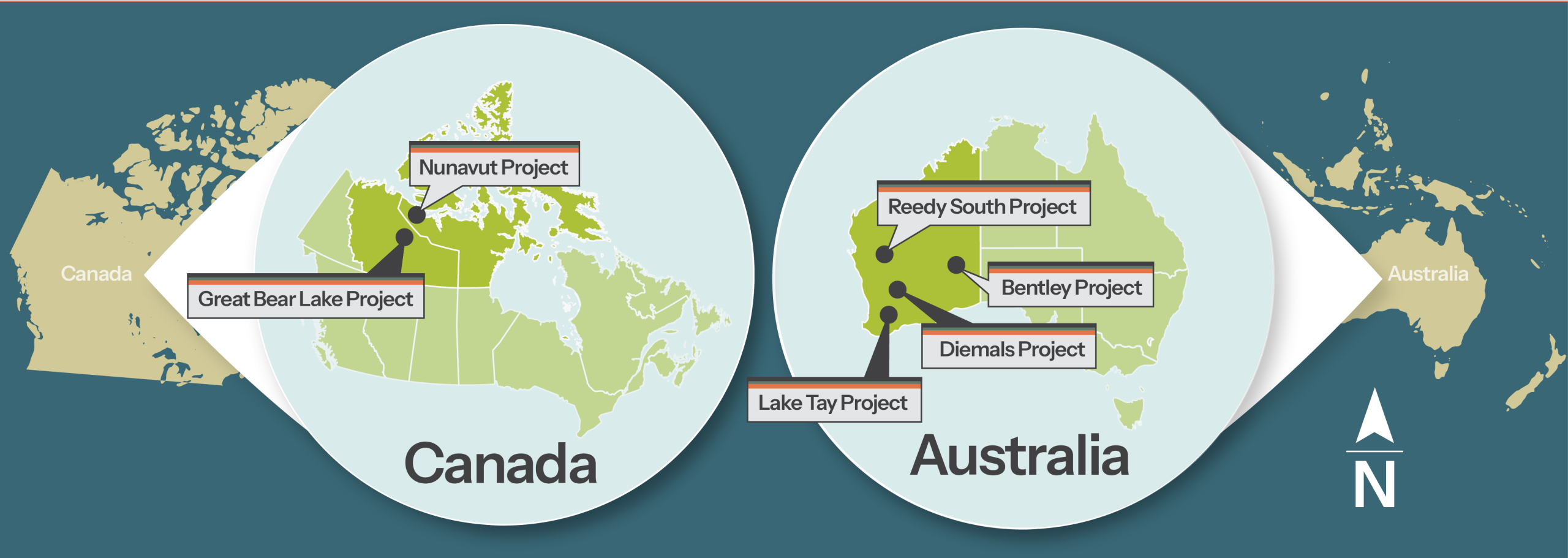
Top 20	32.81%
Board & Management	9.84%
# of Shareholders	2,477

WCN 52W PERFORMANCE

52w high	\$0.021
52w low	\$0.006
Average Volume	4.89m/day

¹ as at 11 June 2024 ² as at 31 May 2024 after prepayments for upcoming field works ³ after cash and liquid instruments

OUR PROJECTS



CANADA PROJECTS



Large, high-grade and scalable projects **secured** in **historic** and **proven** areas



Modern exploration techniques positions us to **unlock** **untapped opportunity**



Significant historical databases and information allow targeted **fast tracked** **on-ground exploration activities**



Canadian Government provides **numerous initiatives** to **support** the **critical minerals industry**¹



Leveraging **the Clean Energy Revolution** with the right commodity basket



¹Canada, the 'place to be'. Canadian government provides opportunities for exploration tax rebates, flow through funding and government grants

CANADA LOCATIONS



Cu **NUNAVUT COPPER-GOLD-SILVER**

Au

Ag

- Licence area totals 805km², in Nunavut, Canada
- Numerous extraordinarily high-grade copper lodes along a continuous structural trend identified and visible⁵
- The outcropping structure of the mineralisation can be traced for more than 100 kilometres in total strike length

U **GREAT BEAR LAKE URANIUM-COPPER-GOLD-SILVER**

Au

Cu

Ag

- Licence area covers an area that exceeds 2,900km² in the Northwest Territories
- The area is within the immediate proximity of significant historical mining operations such as the Eldorado, Echo Bay and Contact Lake mines
- Historical exploration works demonstrate widespread undrilled and underexplored mineralisation at surface

200km

NEWSFLOW & WHATS NEXT - THE NEXT PHASE OF EXPLORATION

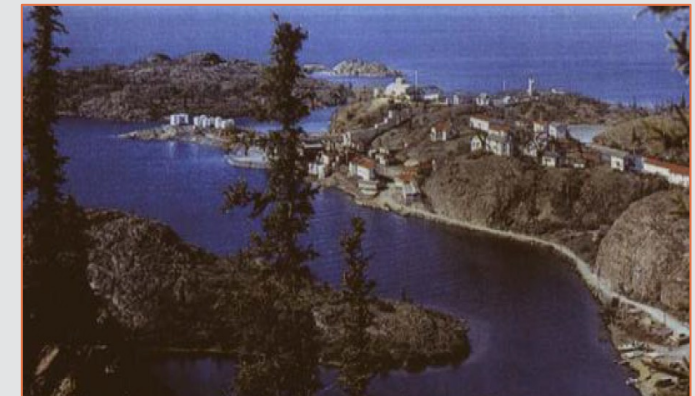
- Field activities to commence - soil sampling, rock chip and trench sampling
- Aerial electromagnetic aerial surveys (MobileMT) across the projects - new targets to be identified
- Surface prospecting and structural mapping - all priority target locations
- Updates from the field - new target generation, ground truthing of historic occurrences
- Progress updates - results from field activities and aerial surveys
- Diamond drilling - Targeted to completed >1,000m of drilling by the end of this year at Great Bear Lake
- Updates on 2025 drilling planning and permits for Great Bear Lake and Nunavut projects



PORT RADIUM, BASE OF ECHO BAY MINE
NWT & NUNAVUT CHAMBER OF MINES PHOTO



PROPOSED AERIAL SURVEY EQUIPMENT



HISTORIC ELDORADO MINE SITE

CANADA GREAT BEAR LAKE

URANIUM-COPPER-GOLD-SILVER

- A **historic** and **proven** area¹
- Identified as having Canada's **highest probability** for the hosting of **iron-oxide-copper-gold uranium** plus **silver**-style mineralisation in the Country
- Recognised as one of Canada's **largest uranium mining districts**
- Total historical production across the area (pre-1982) was:
 - **13,700,000 pounds** of **uranium oxide (U₃O₈)**
 - **34,300,000 ounces** of refined **silver**
 - **11,377,040lbs** of **copper** with **gold** credits, and
 - 127,000 kilograms of **nickel**, 227,000kg of **cobalt** and 104,000kg **lead**
- Historical focus on U, Ag overlooked **significant Cu and Au potential**



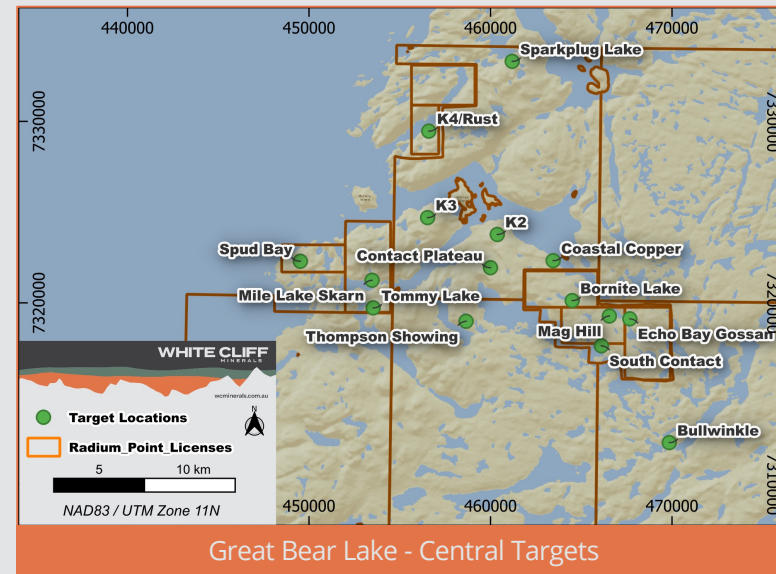
¹ See ASX Announcement - 15 January 2024 "Large Scale Uranium Project Secured in Canada"

CANADA GREAT BEAR LAKE



URANIUM-COPPER-GOLD-SILVER

- More than **40 high priority targets** identified - potential district scale, high grade **U, Cu, Au** and **Ag** opportunity¹
- Data consolidated from highly anomalous rock chip assays from sampling carried out by **state survey** and **historical operations**
- Very **limited modern exploration** undertaken across the greater area
- Historical assay results are impressive and present clear and significant exploration upside **emphasising the area's potential**



¹ See ASX Announcement - 20 May 2024 "Priority Targets Confirmed at Great Bear Lake (Radium Point)"

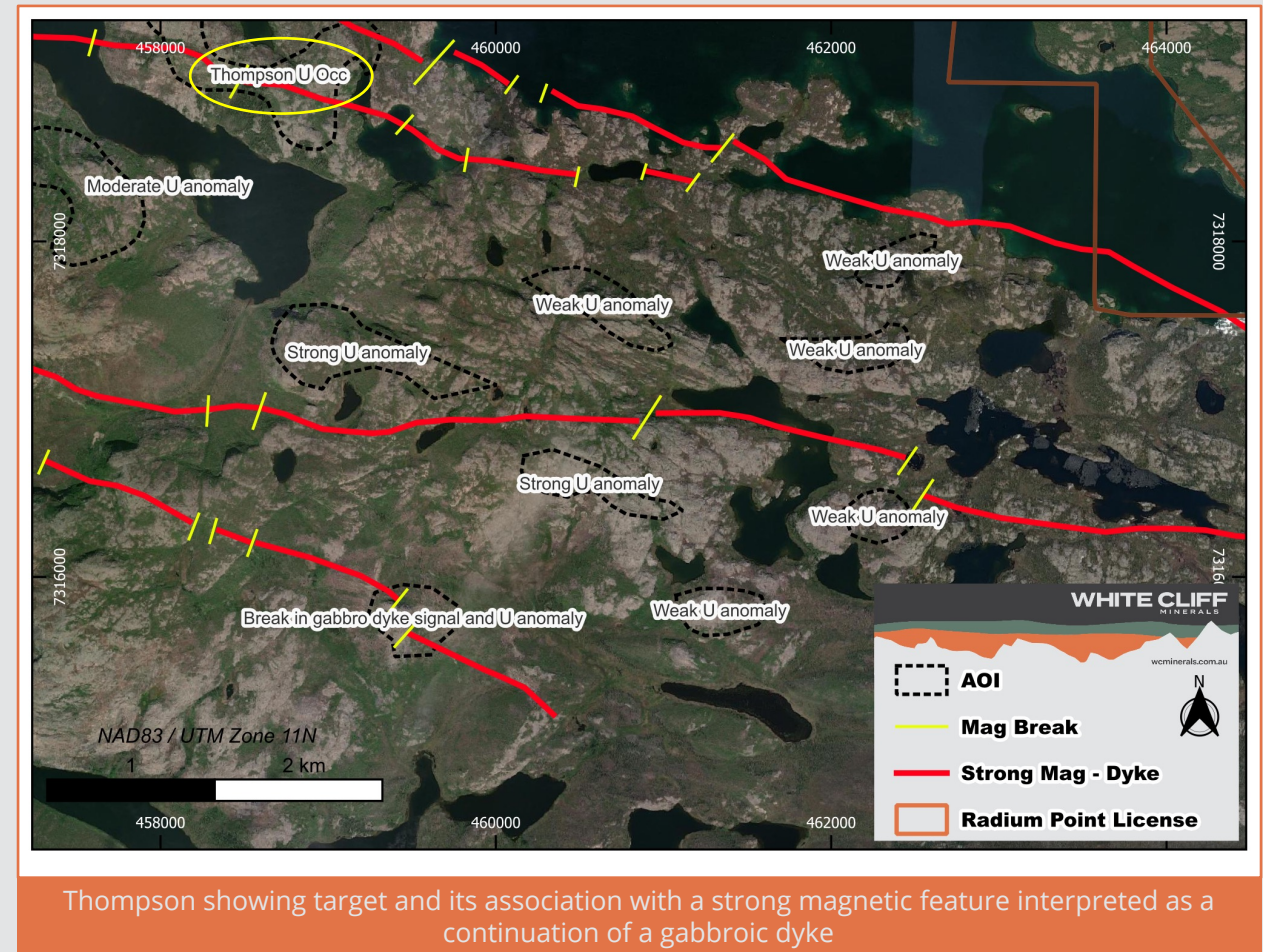
CANADA GREAT BEAR LAKE

URANIUM-COPPER-GOLD-SILVER



Thompson¹

- Located south of the **historic Echo Bay & Eldorado** mines
- High grade polymetallic, fracture and veinlet controlled mineralization - confirmed by historic rock chips:
 - **14.15% U₃O₈, 6.22g/t Au & 122g/t Ag**
 - **15.15g/t Au, 137g/t Ag, 0.66% Cu, 1.11% Co, 0.58% Ni & 2.32% U₃O₈**
 - **7.5% Cu, 1.63% U₃O₈, 729g/t Ag & 1.56g/t Au**
- Previously drill tested by 3 shallow holes that included **5.5m @ 1.7% Cu** and **23.9g/t Ag**
- Integration of historic data has revealed a correlation between mineralisation, gabbroic dykes and **untested Uranium anomalies** from a prior airborne radiometry survey



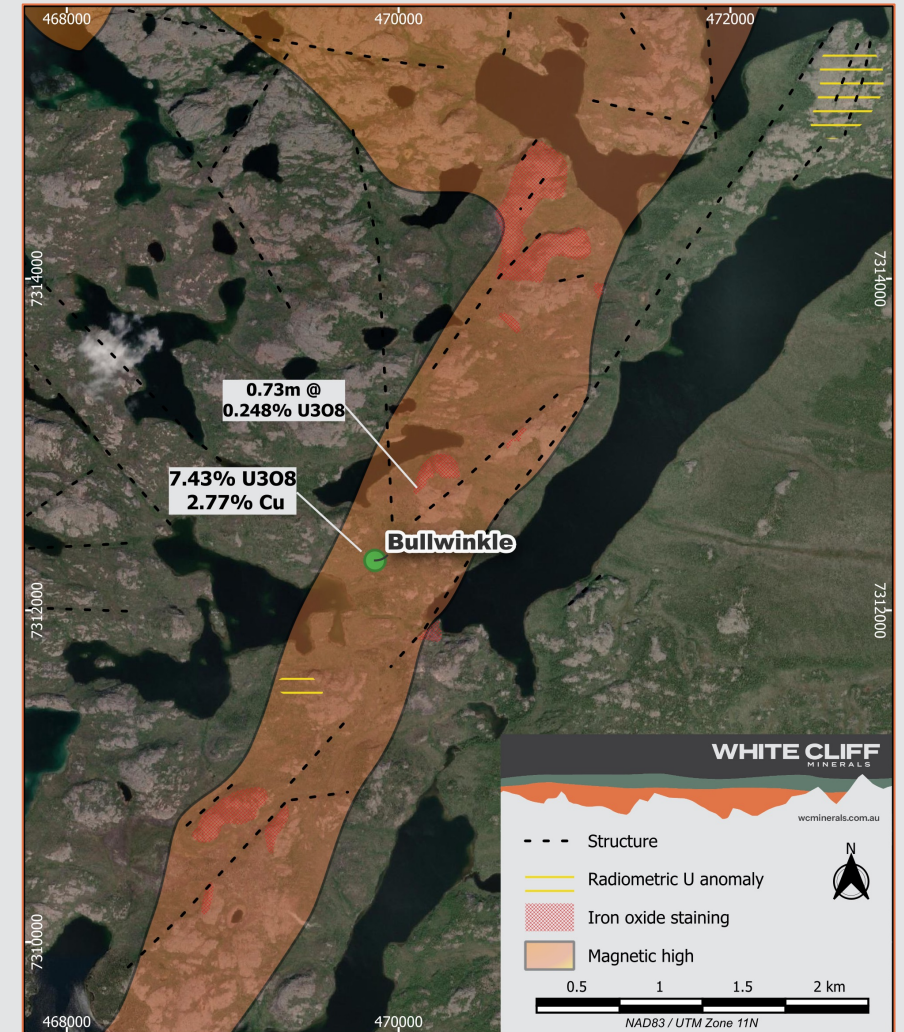
¹ See ASX Announcement - 20 May 2024 "Priority Targets Confirmed at Great Bear Lake (Radium Point)"

CANADA GREAT BEAR LAKE

URANIUM-COPPER-GOLD-SILVER

Bullwinkle¹

- Located 10km south east of Contact Lake
- Lies on a NE/SW trending structure and hosts Cu & U mineralization
- A historic grab sample returned **7.43% U₃O₈** and **2.77% Cu**
- Historic radiometric data identifies a coherent uranium anomaly along strike from the Bullwinkle showing
- Uranium associated with hematite and albite alteration. Several zones of prospective iron oxide staining identified through satellite image analysis and present targets for immediate ground truthing
- This occurrence has never seen modern exploration techniques or been drill tested



Bullwinkle Target – a linear magnetic anomaly similar to the Port Radium geophysical signature

¹ See ASX Announcement - 20 May 2024 "Priority Targets Confirmed at Great Bear Lake (Radium Point)"

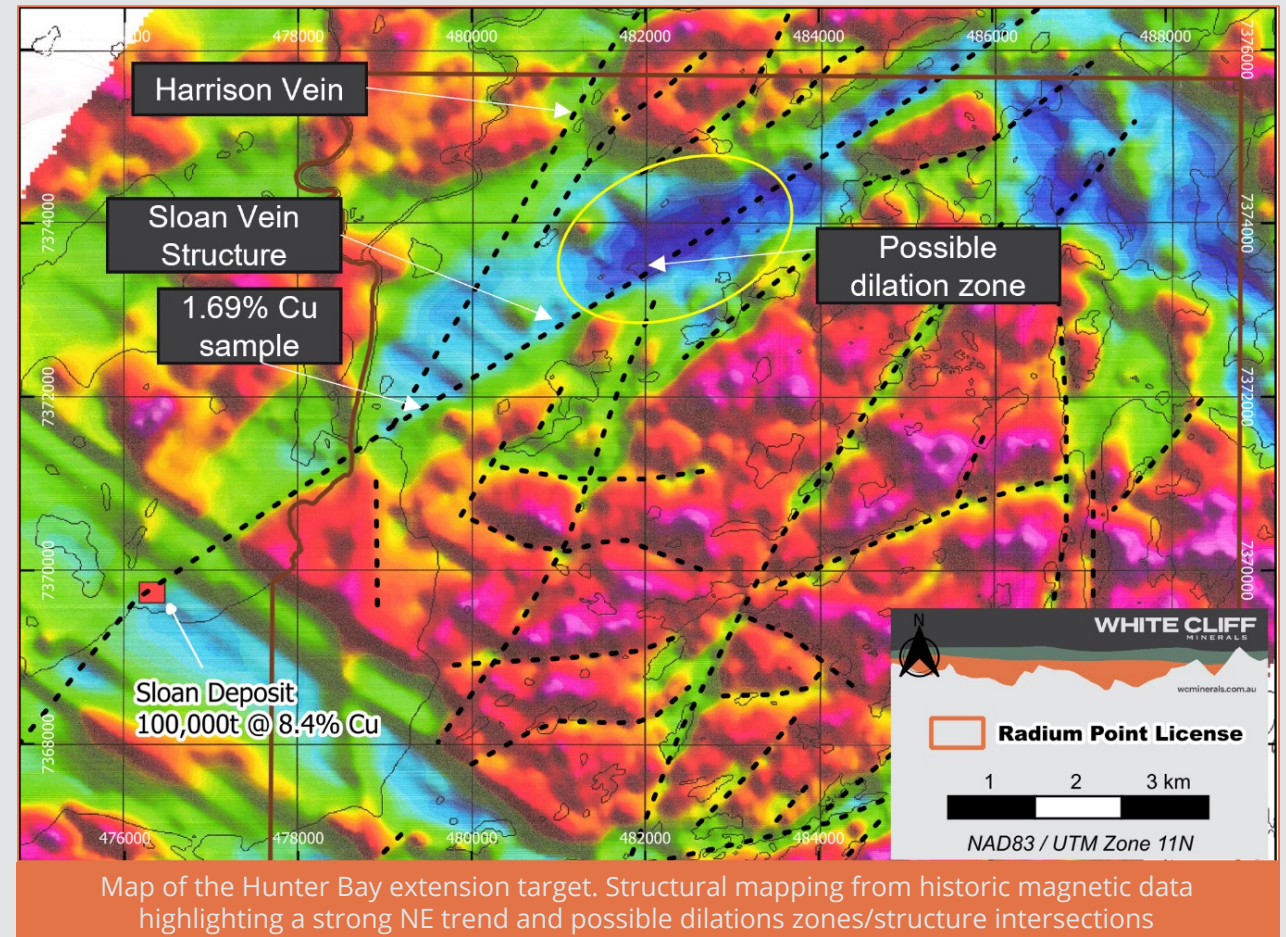
CANADA GREAT BEAR LAKE

URANIUM-COPPER-GOLD-SILVER



Sloan Extension¹

- Located in the north east of the Project area
- Target area immediately along strike historic estimate of **100,000t** at **8.4% Cu** at the Sloan Deposit (Drill results from this deposit report intercepts up to 27.28m at 7.93% Cu)
- The Company holds **>7km strike extension** with surface grab samples of up to **1.69% Cu** and **321ppm U₃O₈**
- Radioactive occurrences with uranium secondary minerals observed at several locations along the Sloan and Harrison veins



¹ See ASX Announcement - 20 May 2024 "Priority Targets Confirmed at Great Bear Lake (Radium Point)"

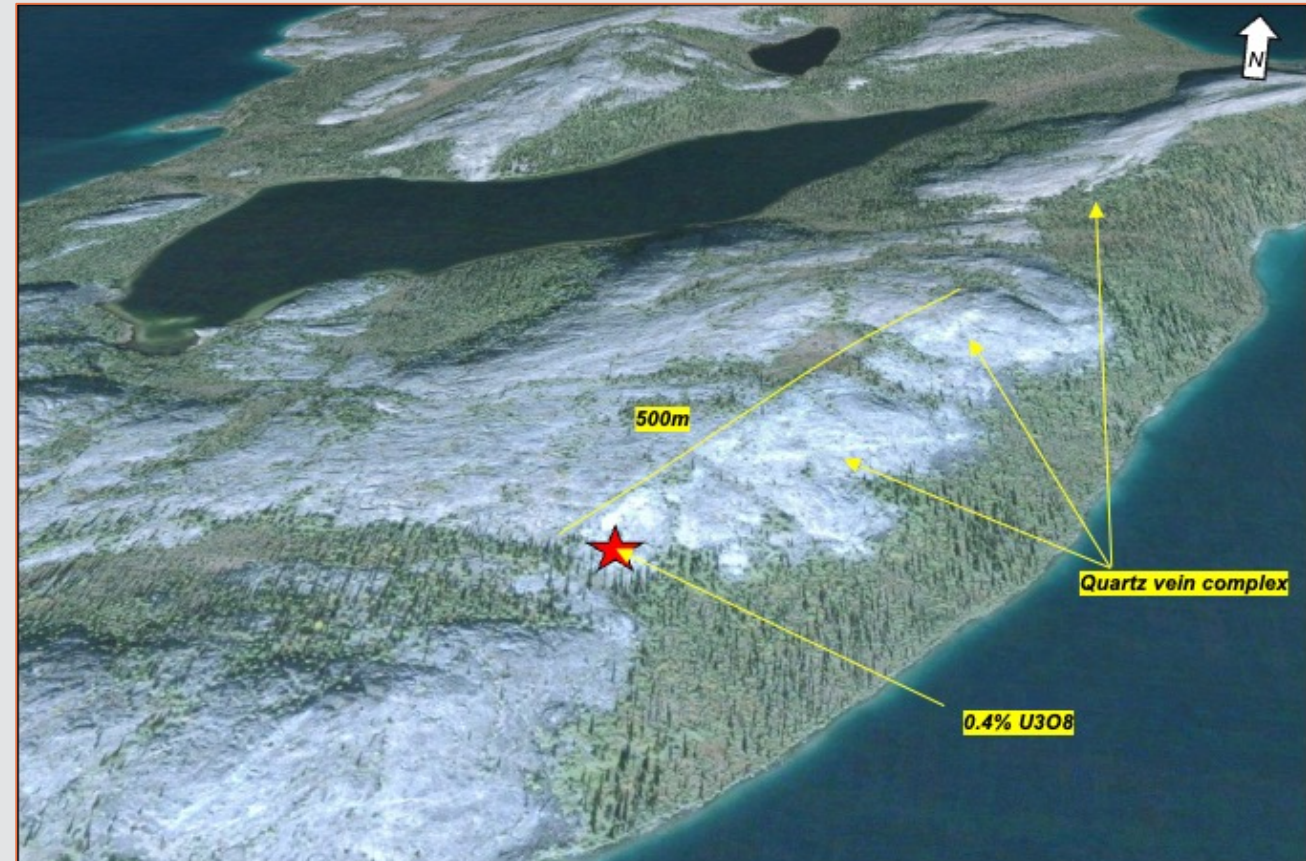
CANADA GREAT BEAR LAKE

URANIUM-COPPER-GOLD-SILVER



Workman¹

- An analogous setting to the historic Ray Rock Uranium Mine which produced 535,000lbs of uranium from pitchblende-sulphide-hematite veining associated with the giant quartz vein complex
- Giant quartz vein complex **8-12m thickness** over **1.5km strike length**, with several vein splays
- Historic results up to **0.4% U₃O₈** in surface rock sampling of quartz veining with visible uranium secondary minerals



Workman Target – Giant quartz vein complex U-Cu Target

¹ See ASX Announcement - 20 May 2024 "Priority Targets Confirmed at Great Bear Lake (Radium Point)"

CANADA GREAT BEAR LAKE

URANIUM-COPPER-GOLD-SILVER



Spud Bay¹

- 1.4km strike extension identified, trending west from the historic Bonanza Silver Mine
- Targets a favourable horizon of porphyritic andesite tuff, striking NW/SE between granite and monzodiorite
- Grab samples collected in 2008 include:
 - **22.7% Cu & 619g/t Ag**
 - **8.41% Cu & 272g/t Ag**
 - **11.7% Cu, 8.3% Zn & 1330g/t Ag**
 - **6.61% Cu & 1427g/t Ag**

¹ See ASX Announcement - 20 May 2024 "Priority Targets Confirmed at Great Bear Lake (Radium Point)"

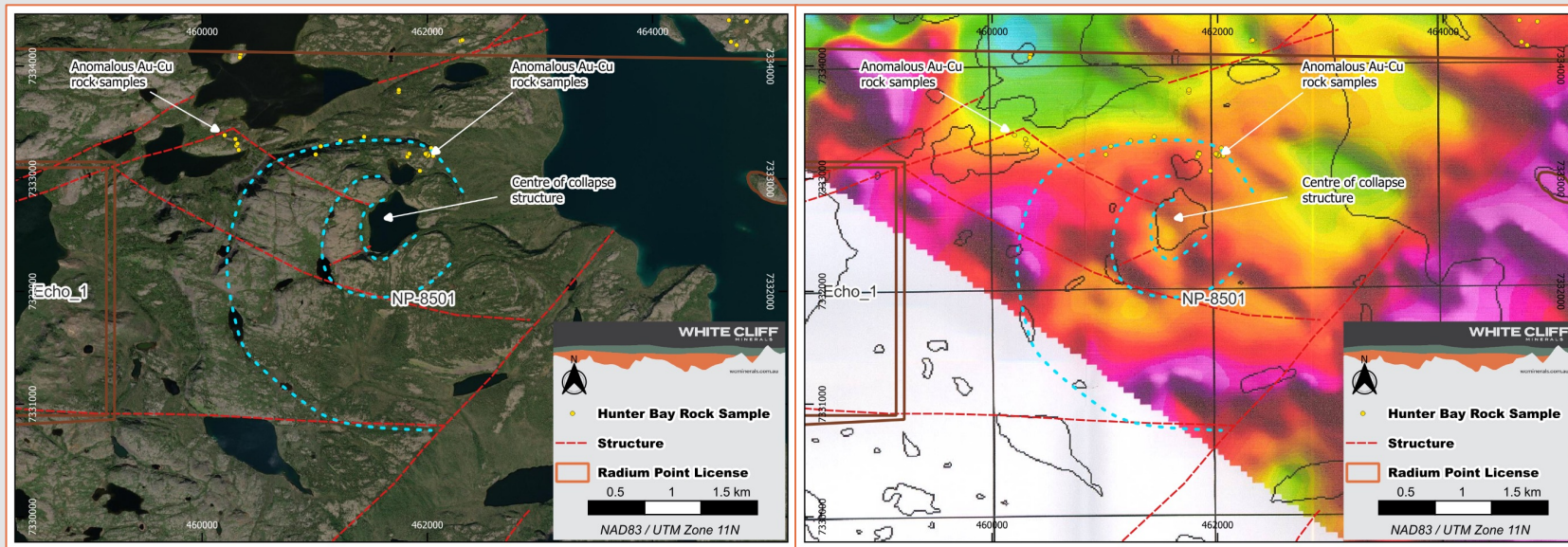
CANADA GREAT BEAR LAKE



URANIUM-COPPER-GOLD-SILVER

Sparkplug Lake¹

- Located 7.3km NE of the historic Eldorado Minesite
- Cu-Au anomalism up to **8.3g/t Au** and **3.97% Cu** noted in 2006 Hunter Bay rock sampling
- Collapse features may indicate dilation/brecciation/permeability creation at depth - Target is an **IOCG system** and associated epithermal veining



Sparkplug Lake. Anomalous Au-Cu rock chip samples taken immediately north of a clear collapse feature with an annular appearance in satellite and historic magnetic imagery.

¹ See ASX Announcement - 20 May 2024 "Priority Targets Confirmed at Great Bear Lake (Radium Point)"

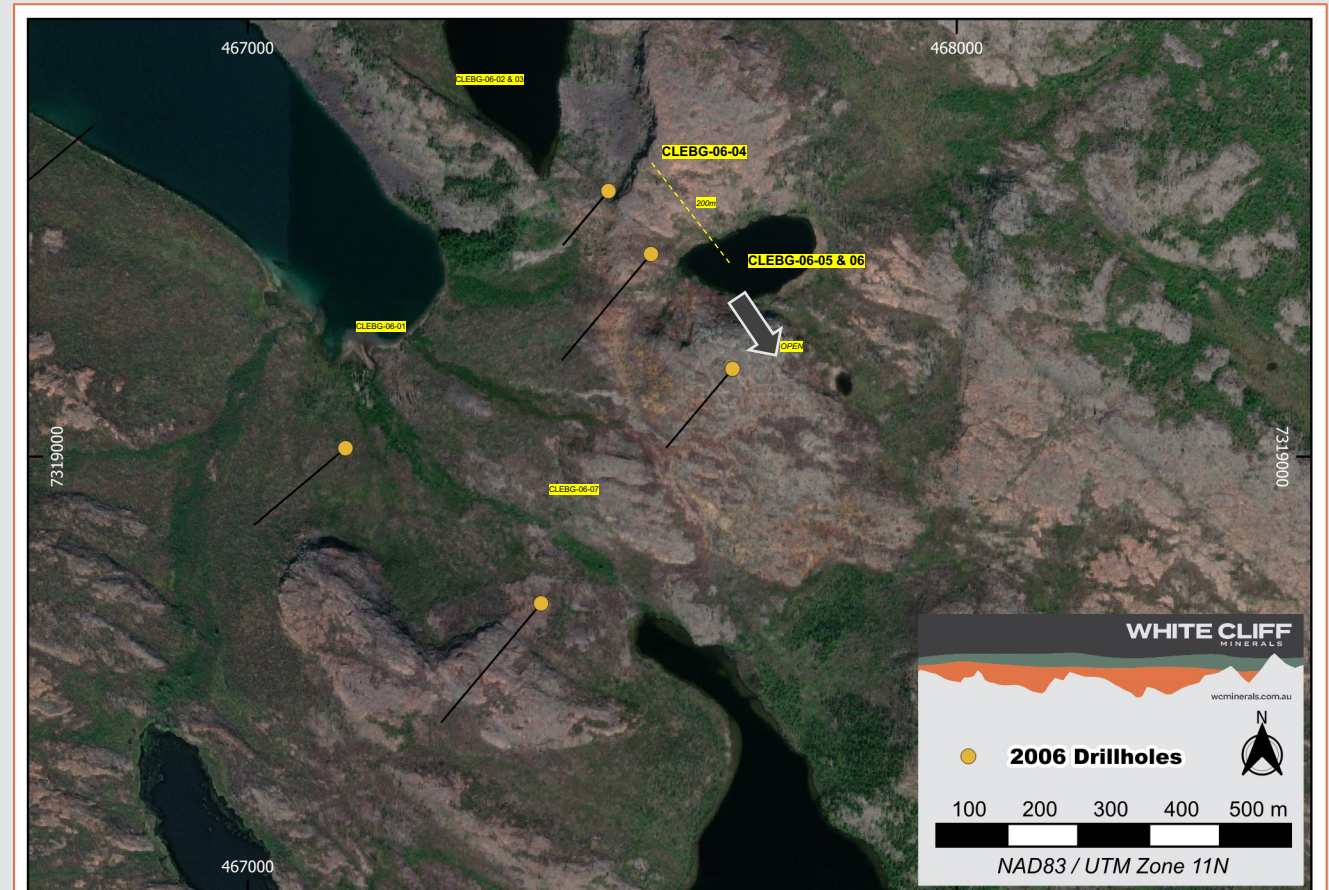
CANADA GREAT BEAR LAKE

URANIUM-COPPER-GOLD-SILVER



Echo Bay Gossan¹

- Large scale phyllic-potassic alteration halo with a 2006 discovery of widespread silver mineralization within a tuff
- Drill tested over 200m strike length with results of:
 - **133m @ 8.78g/t Ag** from 47.5m
 - **45.5m @ 17g/t Ag** from 49.5m incl. **12m @ 55.7g/t Ag**
- Target remains open to north and southeast



Echo Bay Gossan - Historic drill holes

¹ See ASX Announcement - 20 May 2024 "Priority Targets Confirmed at Great Bear Lake (Radium Point)"

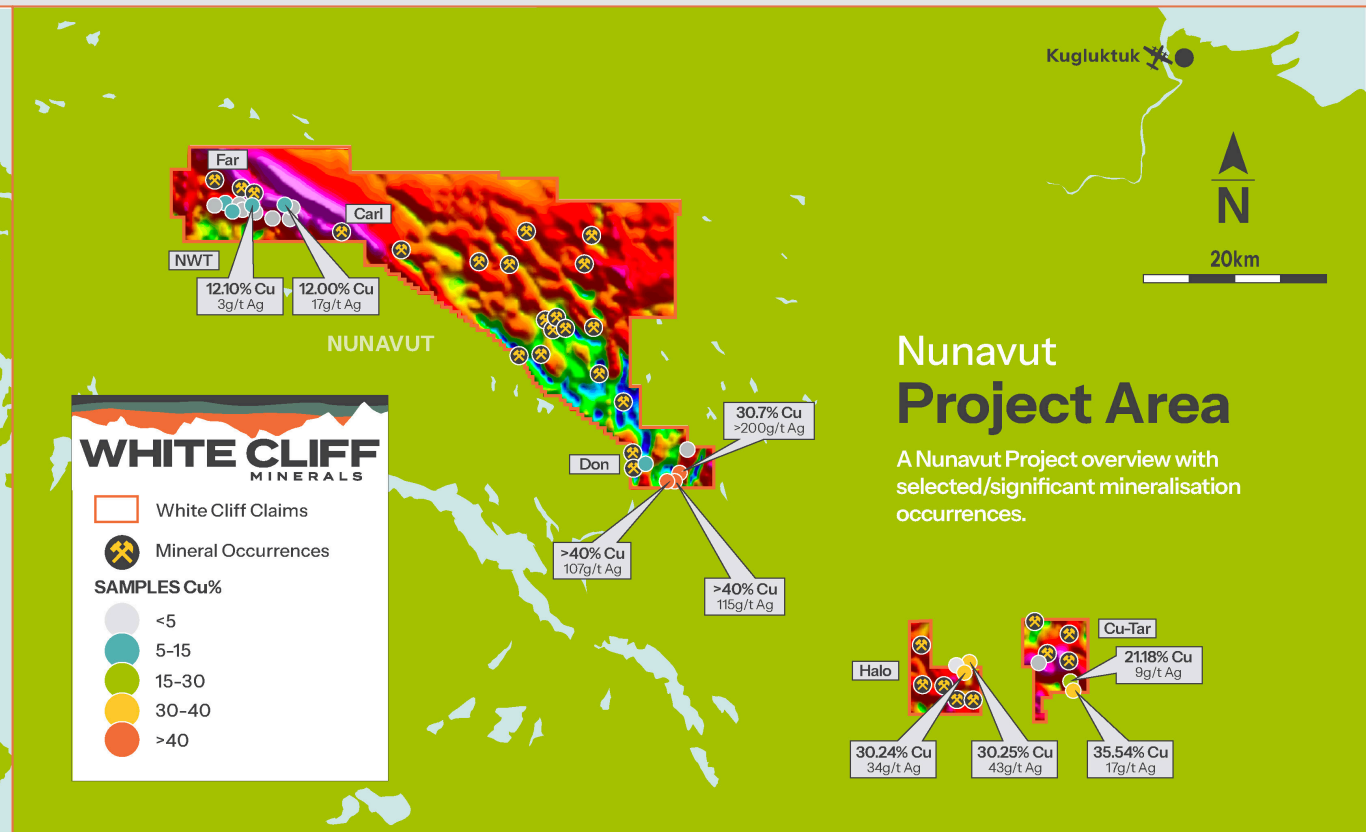
CANADA NUNAVUT

COPPER-GOLD-SILVER



Scope for discovery of large tonnage sediment hosted copper

Previous exploration has validated numerous highly prospective Cu, Au & Ag mineralisation occurrences



Known high grade Cu-Ag lodes within volcanic rocks primed to apply modern exploration and drilling techniques

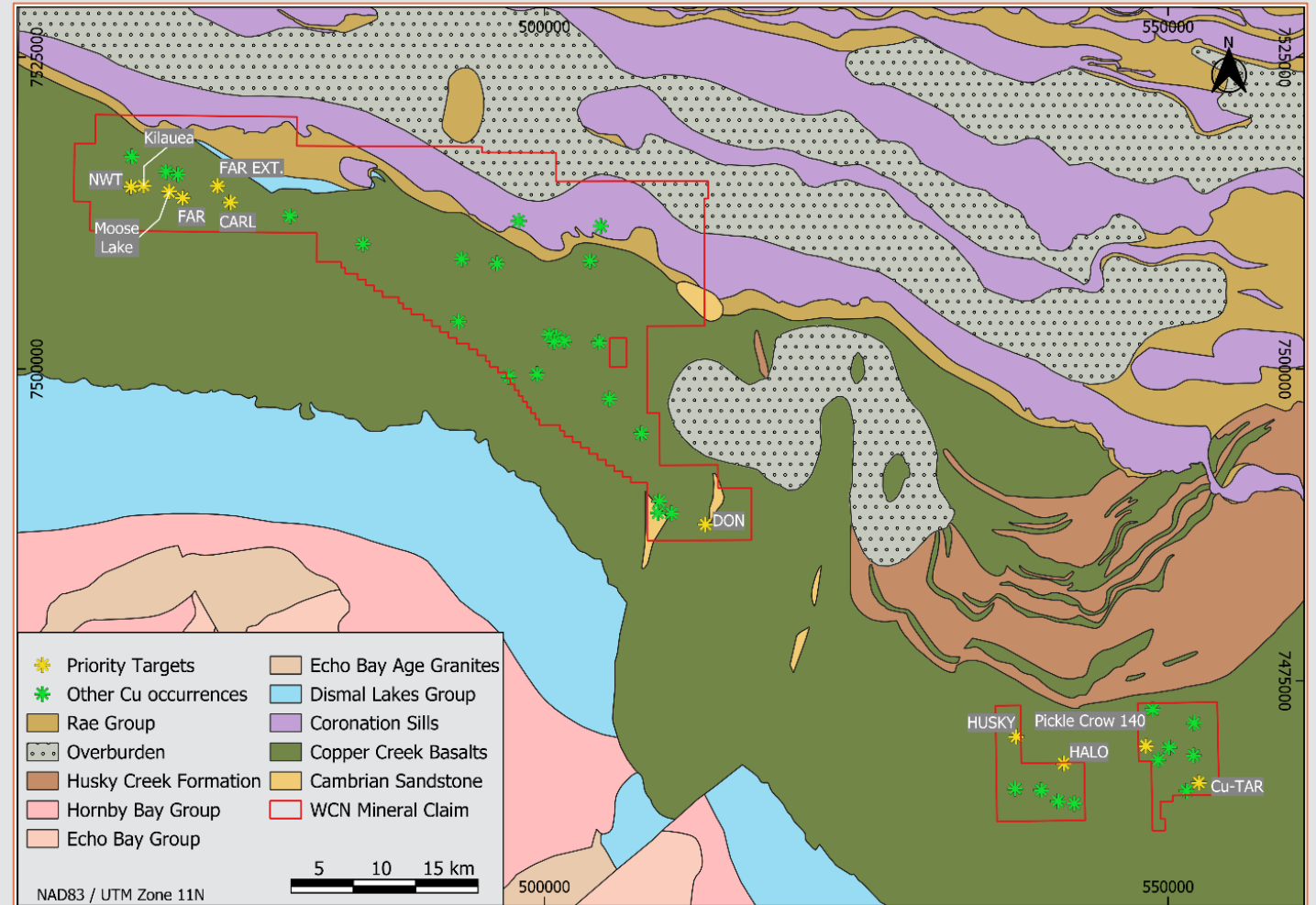
CANADA NUNAVUT

COPPER-GOLD-SILVER



Nunavut - Coppermine¹

- 42 historic copper-gold-silver occurrences digitized from historic records
- Represents a **district scale opportunity** at the pre-discovery stage
- Underpinned by the presence of both high-grade, volcanic hosted copper-silver lodes and the prospect of large tonnage sedimentary hosted copper deposits
- Hosts all required first order controls for formation of sedimentary hosted copper deposits, with proof-of-concept results from historic drilling



Geological map of the Company's mineral claims, Nunavut. Map highlights the priority volcanic hosted copper-silver targets and extensive other noted occurrences

¹ See ASX Announcement - 28 May 2024 "Imminent Field Activities for Nunavut Cu-Au-Ag Project"

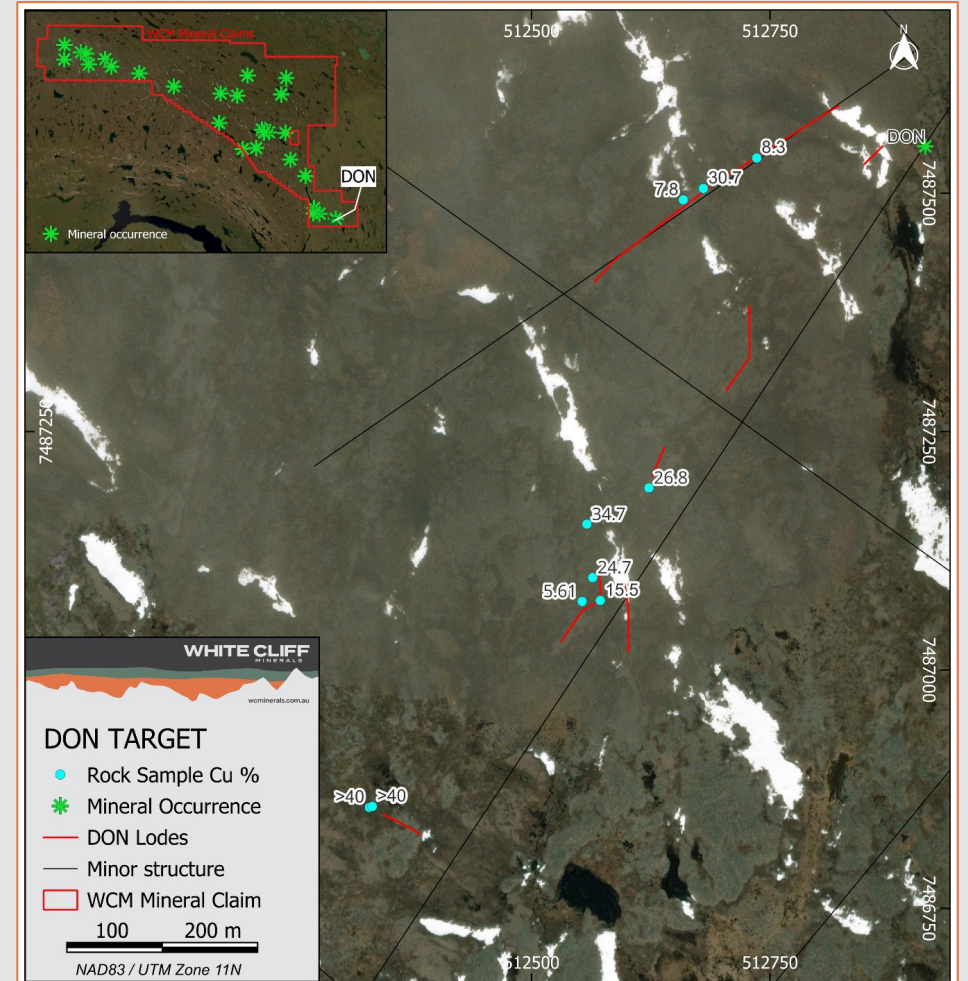
CANADA NUNAVUT

COPPER-GOLD-SILVER

Don¹

- The target hosts at least 2 vertical quartz-chalcocite veins approximately 8m apart with a strike length of 152m striking NE
- Sampling in 2014 by Tundra Copper Corp. (NUMIN File Reference 086024) returned grab sample results of:
 - **34.7% Cu** and **76g/t Ag**
 - **26.8% Cu** and **26g/t Ag**
 - **24.7% Cu** and **27g/t Ag**
 - **5.61% Cu** and **5g/t Ag**
- Samples taken on the most northerly quartz-chalcocite-bornite vein (Kaizen Discovery, 2015) had a separation of 88m along strike and returned values of:
 - **30.7% Cu** and **194g/t Ag**
 - **8.29% Cu** and **23g/t Ag**
 - **7.84% Cu** and **104g/t Ag**

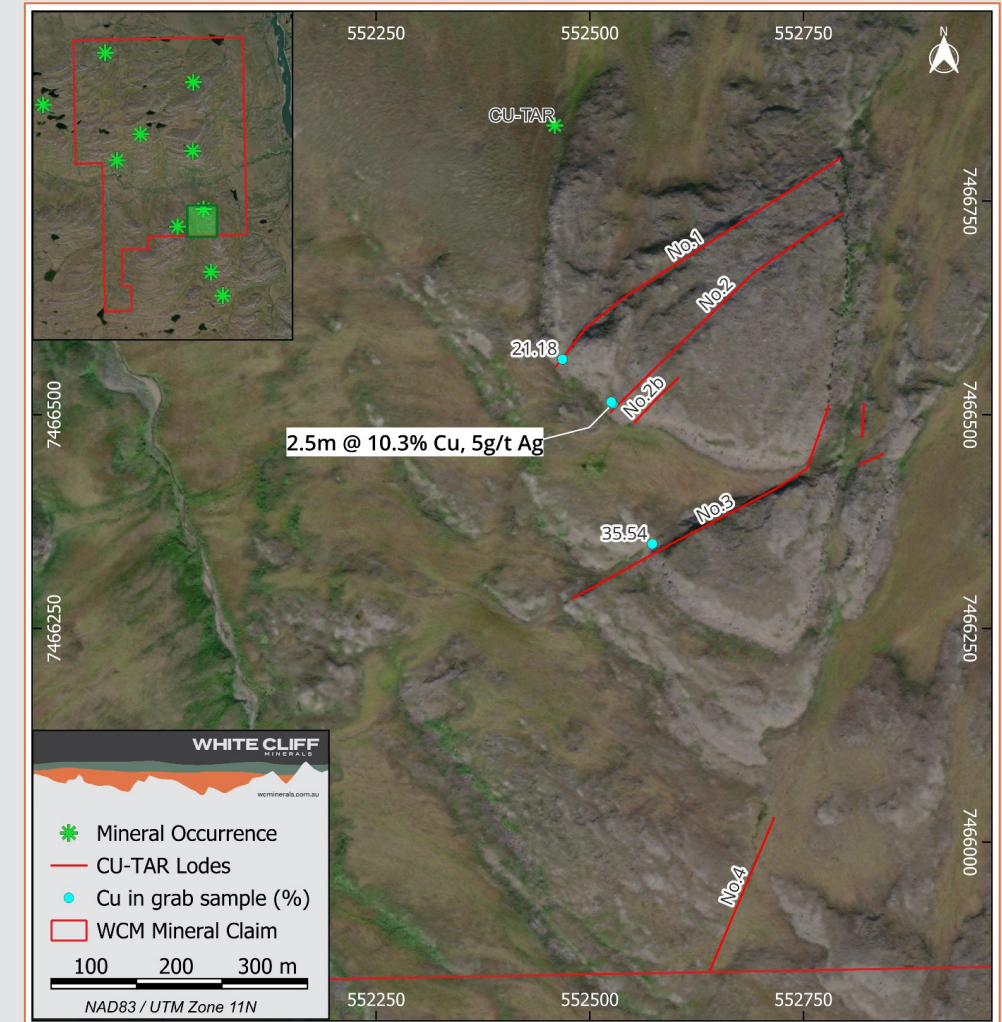
¹ See ASX Announcement - 28 May 2024 "Imminent Field Activities for Nunavut Cu-Au-Ag Project"



Don Prospect - Map of previous sampling completed by Tundra Copper Corp in 2013 and 2014 field programs - Over 800 m prospective strike

CU-TAR¹

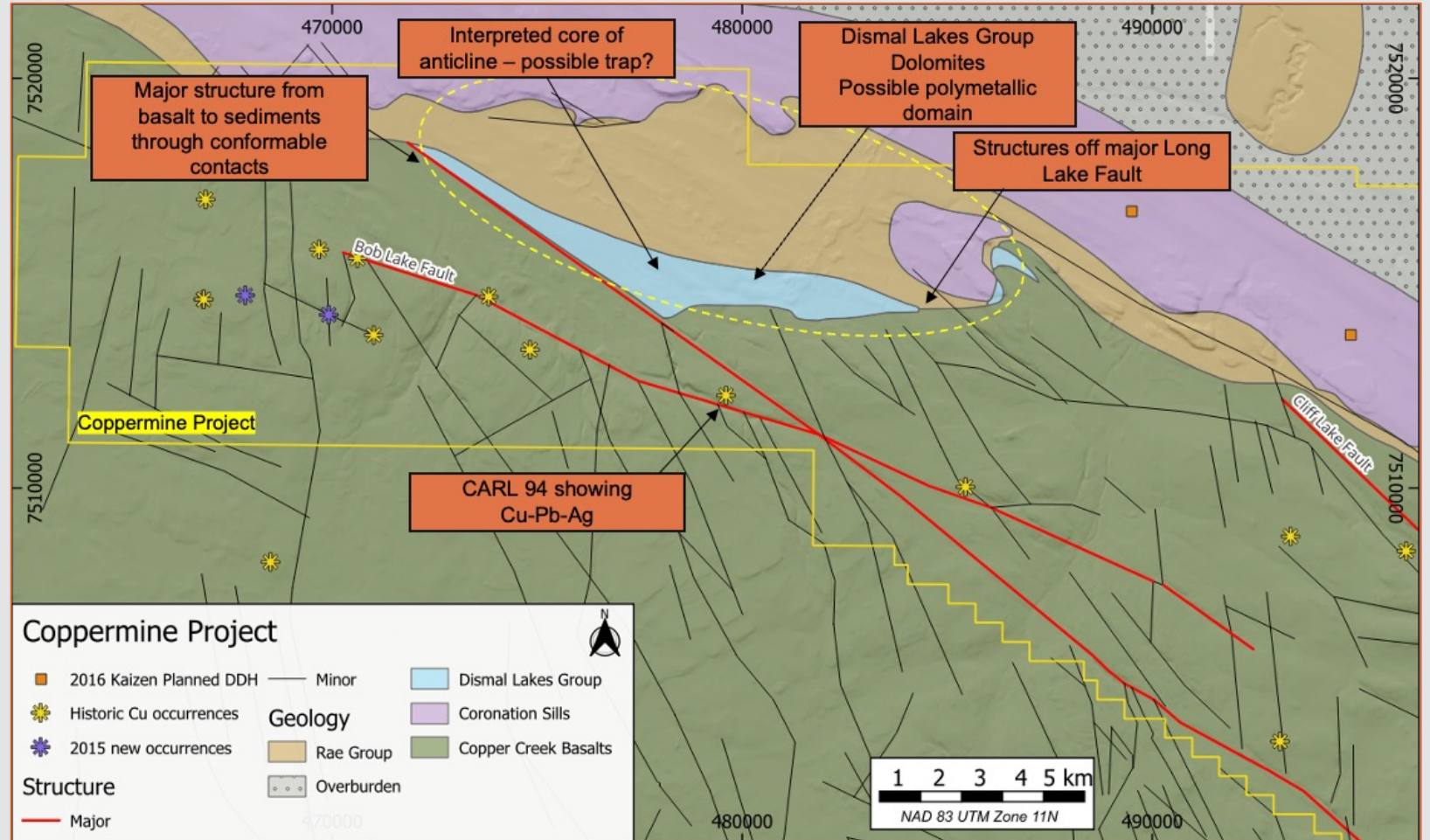
- Located in the SE of the Company's mineral claims
- The prospect offers at least 4 copper-silver lodes within NE trending vertical structures cutting the stacked basaltic flows of the Coppermine River Group
- Surface grab sampling by Tundra Copper Corp. in 2013 on lode No.1 and No.3 returned values of **21.18% Cu & 9g/t Ag** and **35.54% Cu & 17g/t Ag** respectively
- Sampling in 2014, conducted by Tundra Copper Corp. returned **2.5m at 10.3% Cu and 5g/t Ag** from composite rock chip sampling across lode No. 2.
- The lodes, as described by Kindle 1972 in GSC bulletin 214 are between 0.6m and 4.5m thick and can be traced for up to 457m on surface



¹ See ASX Announcement - 28 May 2024 "Imminent Field Activities for Nunavut Cu-Au-Ag Project"

West Nunavut - Other Priorities¹

- Moose Lake, FAR & FAR Extension
 - Located along a WNW/ESE structural trend covering over 4km strike length.
 - Grab samples from 2015 include 12.1% Cu, 12% Cu, 8.8% Cu and 4.5% Cu
- CARL
 - Hosts an historic, non JORC estimate of **125,000t @ 2% Cu**
- NWT & Kilaueea
 - 7km west of the CARL target
 - A **2015 grab sample** returned **9.1% Cu and 18g/t Ag**



Western Nunavut – map showing interpreted geological structures and highlights the priority volcanic hosted copper-silver targets and extensive other noted occurrences

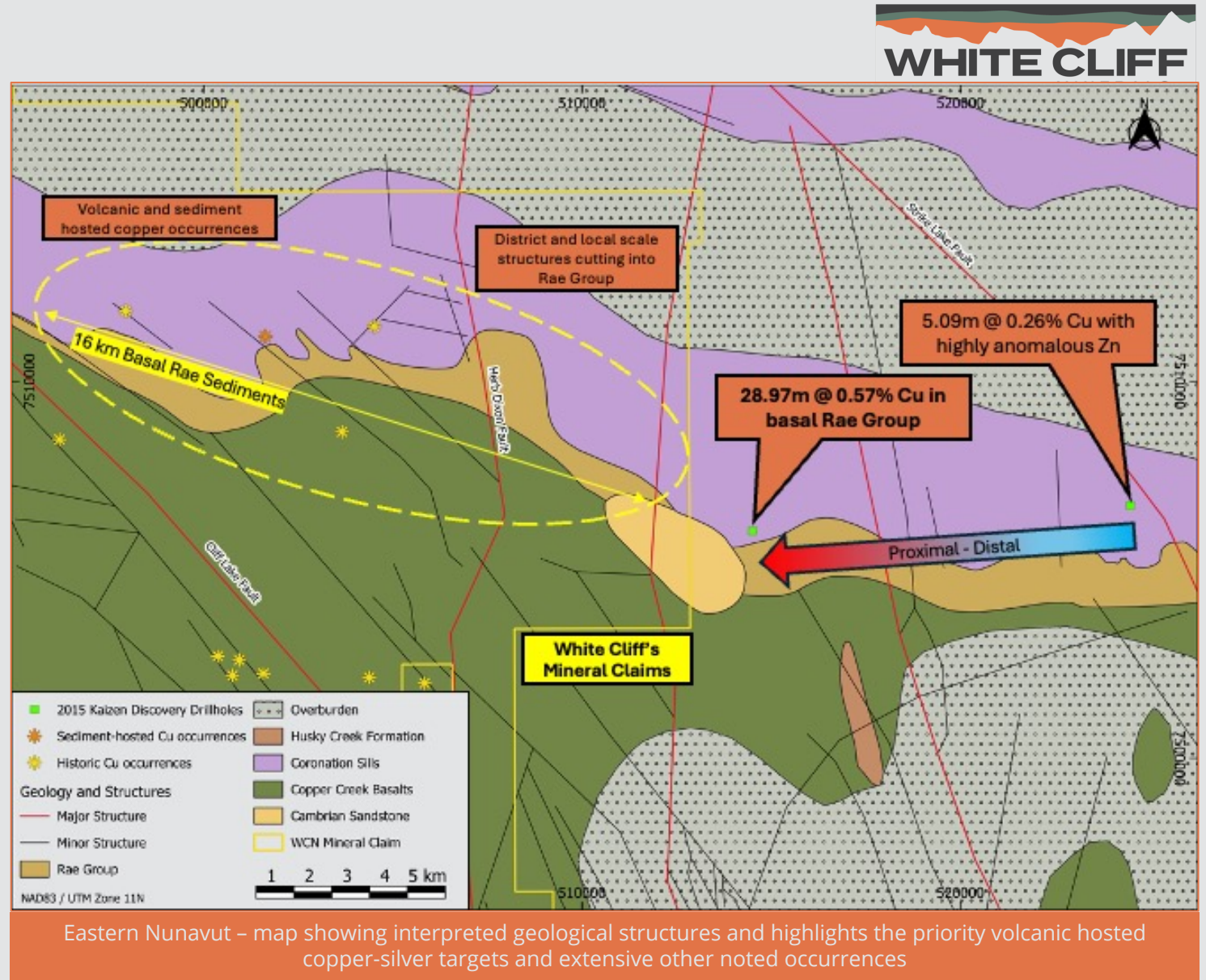
¹ See ASX Announcement - 28 May 2024 "Imminent Field Activities for Nunavut Cu-Au-Ag Project"

CANADA NUNAVUT

COPPER-GOLD-SILVER

East Nunavut - Other Priorities¹

- North of DON prospect
- **16km strike identified** - This area has 3 regional faults crossing the unconformable basalt-sediment contact and are associated with volcanic hosted copper mineralisation
- These regional structures are known fluid pathways for copper bearing fluids as they are associated with numerous volcanic-hosted lode copper occurrences
- **>48km strike length of basal Rae Group sediments within Company's mineral claims**



Eastern Nunavut – map showing interpreted geological structures and highlights the priority volcanic hosted copper-silver targets and extensive other noted occurrences

¹ See ASX Announcement - 28 May 2024 "Imminent Field Activities for Nunavut Cu-Au-Ag Project"

A refreshed strategy within Western Australia - refining the portfolio to four highly prospective projects

Au

REEDY SOUTH GOLD

- JORC resource of 42 kilo-ounces gold¹
- The Reedy South area covers 272km² immediately south of Triton/South Emu Mine (Westgold) in the Goldfields and features multiple highly prospective drill targets

Au

BENTLEY GOLD-COPPER-URANIUM

- Bentley is 45 km north of Warburton and 550km east of Laverton
- Area features strong magnetic and gravity anomalies

Cu

U

REE

Cu

DIEMALS COPPER-LITHIUM-GOLD-NICKEL

- Diemals covers about 3000km², located 185km north of Southern Cross
- Underexplored tenure, with two greenstones belts identified on the west and east margins being prospective for lithium, gold, nickel and copper

Li

Au

Ni

REE

Au

LAKE TAY GOLD-LITHIUM-RARE EARTHS

- Area of ~1874km² covers a large portion of the Lake Johnston greenstone belt
- Adjacent to TG Metals and 20km from the Charger Metals and Rio Tinto Exploration JV

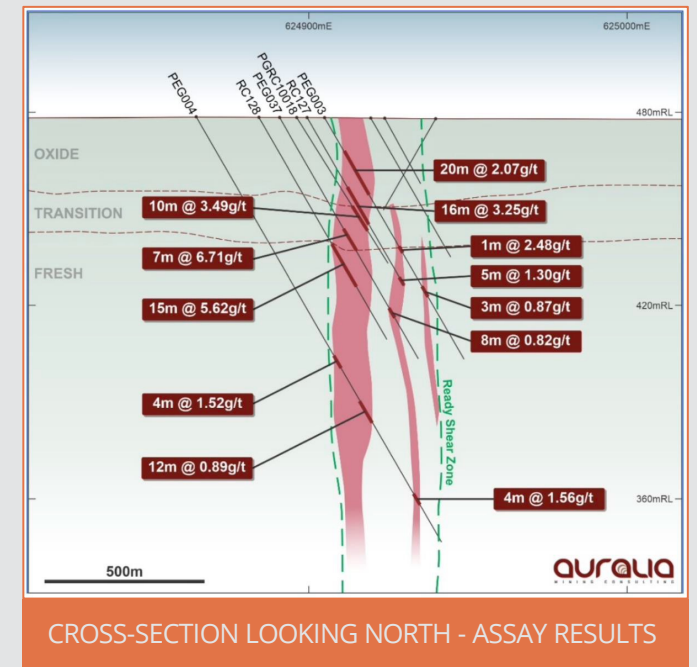
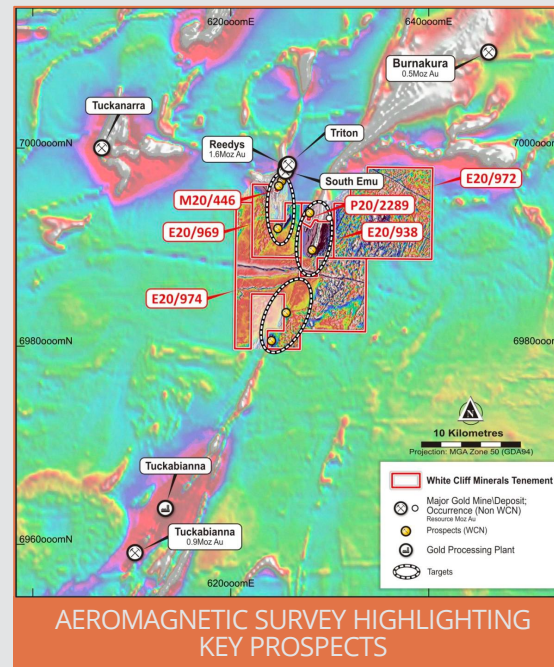
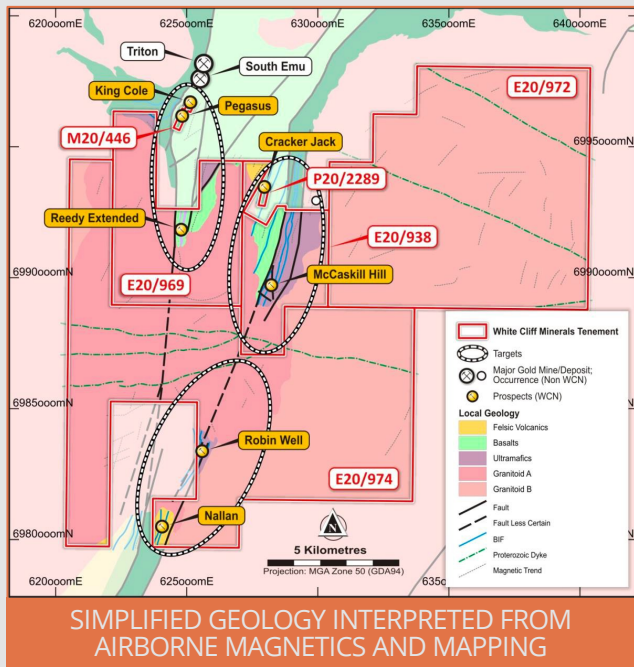
Li

REE

¹ See ASX Announcement - October 2020 "Maiden 42,400 Ounces JORC Mineral Resource at Reedy South"

Reedy South

- The Pegasus/King Cole area has a JORC Resource (MRE) of **779,000 tonnes at 1.7 grams per tonne gold for 42,400 ounces¹**
- The mineralisation is similar to the Triton-South Emu goldmine immediately north of the project
- Drilling campaign undertaken to further explore for potential lateral, width and depth extensions to the MRE - **Assays pending**



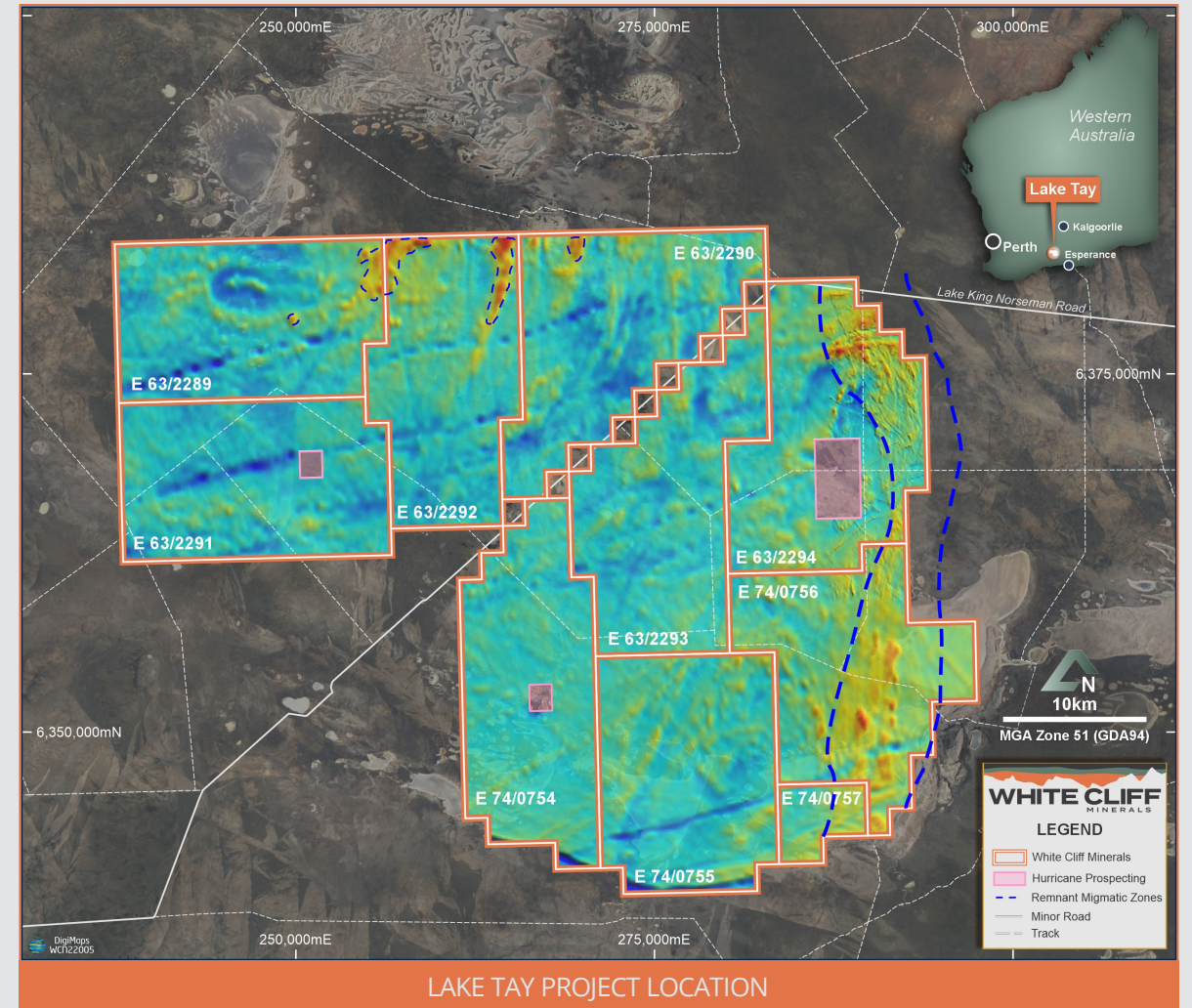
¹ See ASX Announcement - October 2020 "Maiden 42,400 Ounces JORC Mineral Resource at Reedy South"

WA PROJECTS

GOLD-LITHIUM-RARE EARTHS

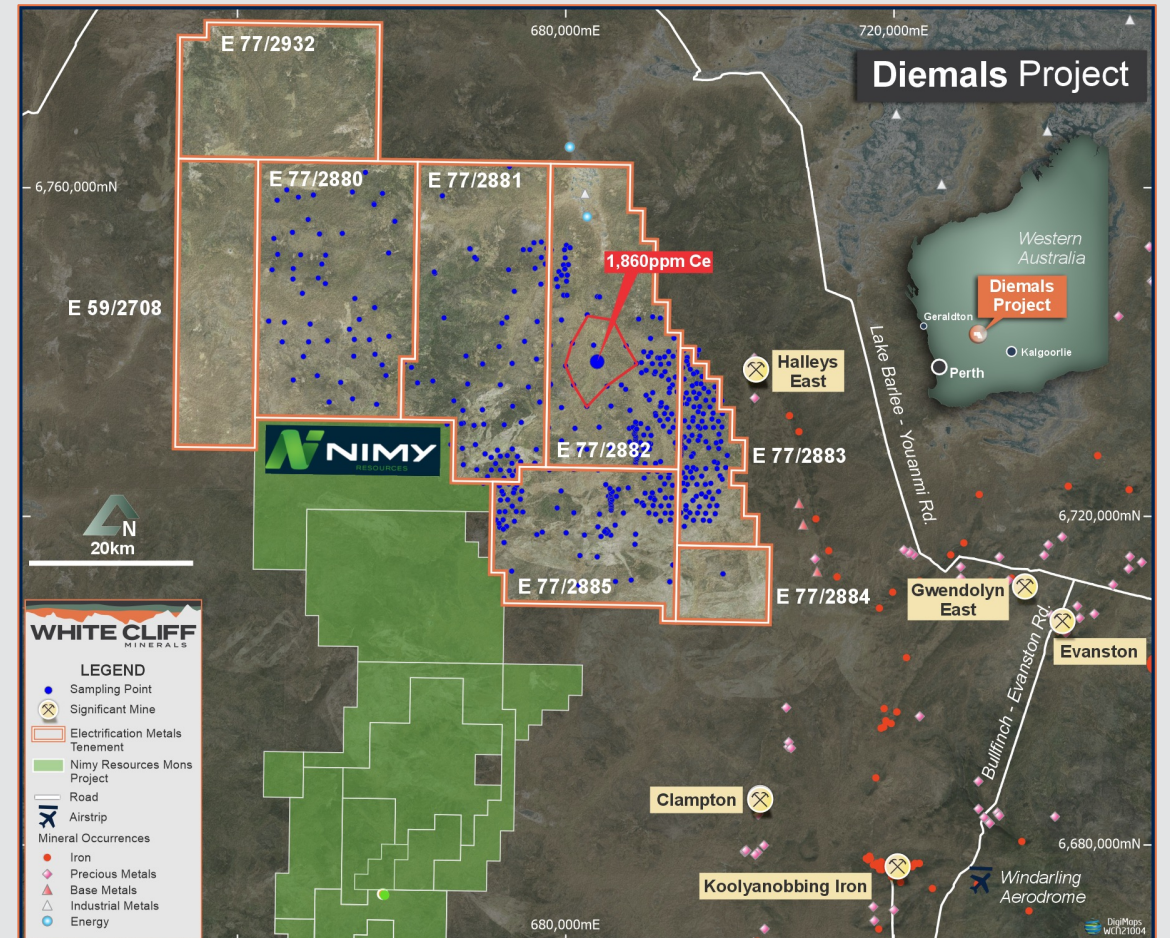
Lake Tay (Lake Johnston)

- This area remains **largely underexplored** and remains highly prospective
- Lake Tay is adjacent to TG Metals and 20km from the Charger Metals and Rio Tinto Exploration JV
- The licence covers the southern half of the Lake Johnston structural corridor providing the Company with a dominant land holding
- Further sampling and field mapping will be conducted in this **new high-grade lithium province**
- Shallow aircore drilling by Magnetic Resources NL at Lake Tay in 2008 intersected a highly magnetic granitoid returning highly anomalous REE results including:
 - 4m @ 1012ppm TREO, LTWAC-4, 28-32m
 - 5 holes >500ppm TREO over 4m (ACLTWAC-4, 10, 17, TSLAC-2, 3, LTPAC-2)



Diemals

- Recent reinterpretation of aeromagnetic data **confirms the Forrestania greenstone belt that runs through Nimy Resources' tenure continues north into Diemals**
- An eastern greenstone belt terminates within the western tenement area
- Upcoming work programs include:
 - Complete geochem sampling and conduct follow-up surface sampling field work
 - Acquire high-resolution magnetic and radiometric data
 - Review the implementation of VTEM on the west side of tenure

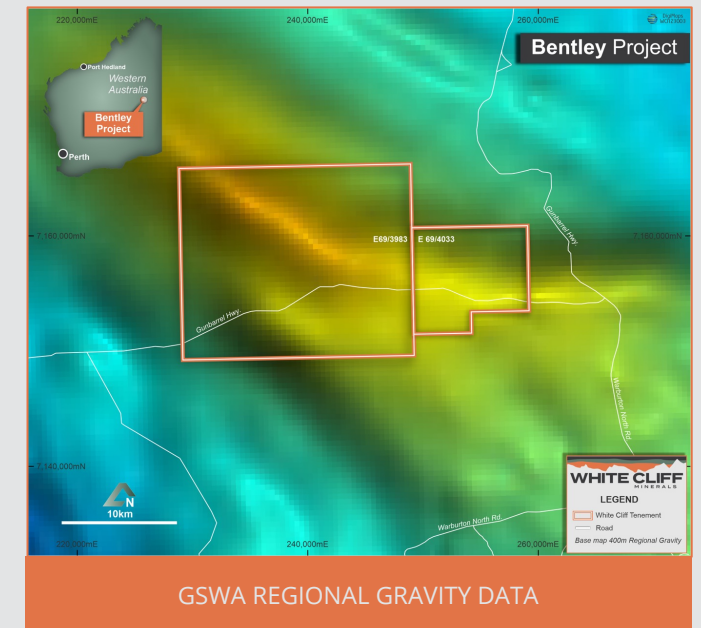
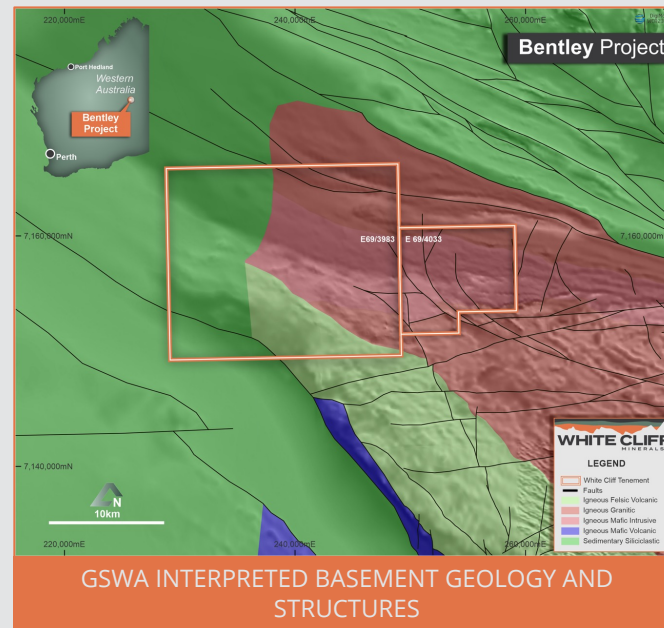
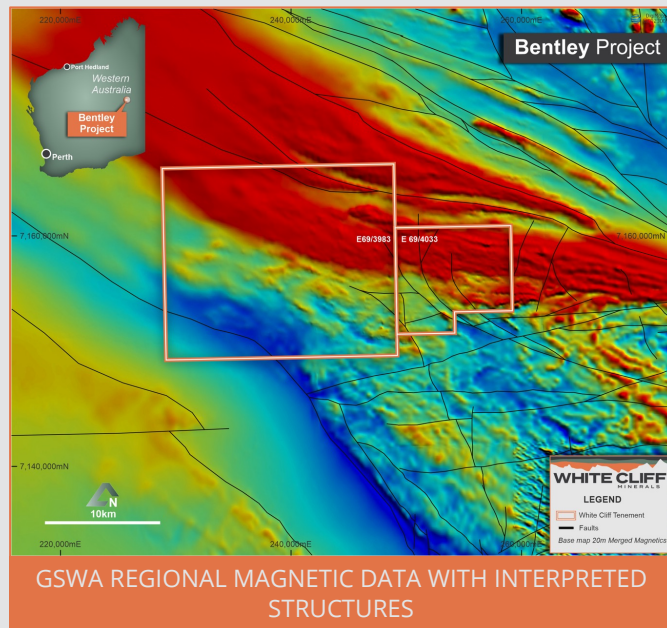


PROJECT LOCATION, CSIRO SAMPLING POINTS AND RELATIVE LOCATION TO NIMY PROJECT

URANIUM-COPPER-GOLD-RARE EARTHS

Bentley

- Gravity anomalies trend in a northwest direction over a distance of approximately 9km and are flanked to the north and south by two major thrust faults which are highly prospective for **IOCG-U** mineral deposits as they share similar characteristics indicative of this type of mineralisation.
- Stakeholder discussions continue to progress on schedule and the Company anticipates the grant of the Exploration Licence shortly



CONTACT INFORMATION

WHITE CLIFF
MINERALS

Rod McIlree
Executive Chairman

Troy Whittaker
Managing Director

P: +61 8 9486 4036
E: info@wcminerals.com.au

wcminerals.com.au