

ASX ANNOUNCEMENT – 13 JUNE 2024

FIELDWORK RE-COMMENCES AT NORTHERN LIGHTS LITHIUM PROJECTS AHEAD OF DRILLING IN JULY

HIGHLIGHTS

- **Fieldwork programs to re-commence at the Bohier and Léran Lithium Projects in Canada in mid-June, with drilling scheduled to commence in mid-July.**
- **Planned work programs at the Bohier Project will comprise mapping and sampling, including surface sampling of known pegmatites with favourable chemical assemblages within the central/northern sections of the Bohier Property.**
- **Diamond drilling program to commence at Bohier in mid-July targeting known pegmatite and gravimetric anomalies.**
- **Planned work programs at the Léran Project comprise mapping and sampling, including surface sampling of known pegmatites with favourable chemical assemblages within the central/northern sections of the Property area.**
- **These programs will follow-up previously reported high-grade lithium results from Léran and expand the Company's lithium target inventory for future drilling.**

Mont Royal Resources Limited ("**Mont Royal**", the "**Company**") (**ASX: MRZ**) is pleased to advise that it has commenced a new phase of exploration at its Northern Lights Lithium Projects, strategically located in the world-class James Bay region of Quebec, Canada (see Figure 1).

The commencement of the Company's 2024 Summer Fieldwork Program marks the beginning of an important new phase of lithium exploration for Mont Royal, which coincides with a recent improvement in global lithium market conditions.

It will pave the way for the Company's maiden drilling program at the Bohier Project, scheduled to commence in mid-July.

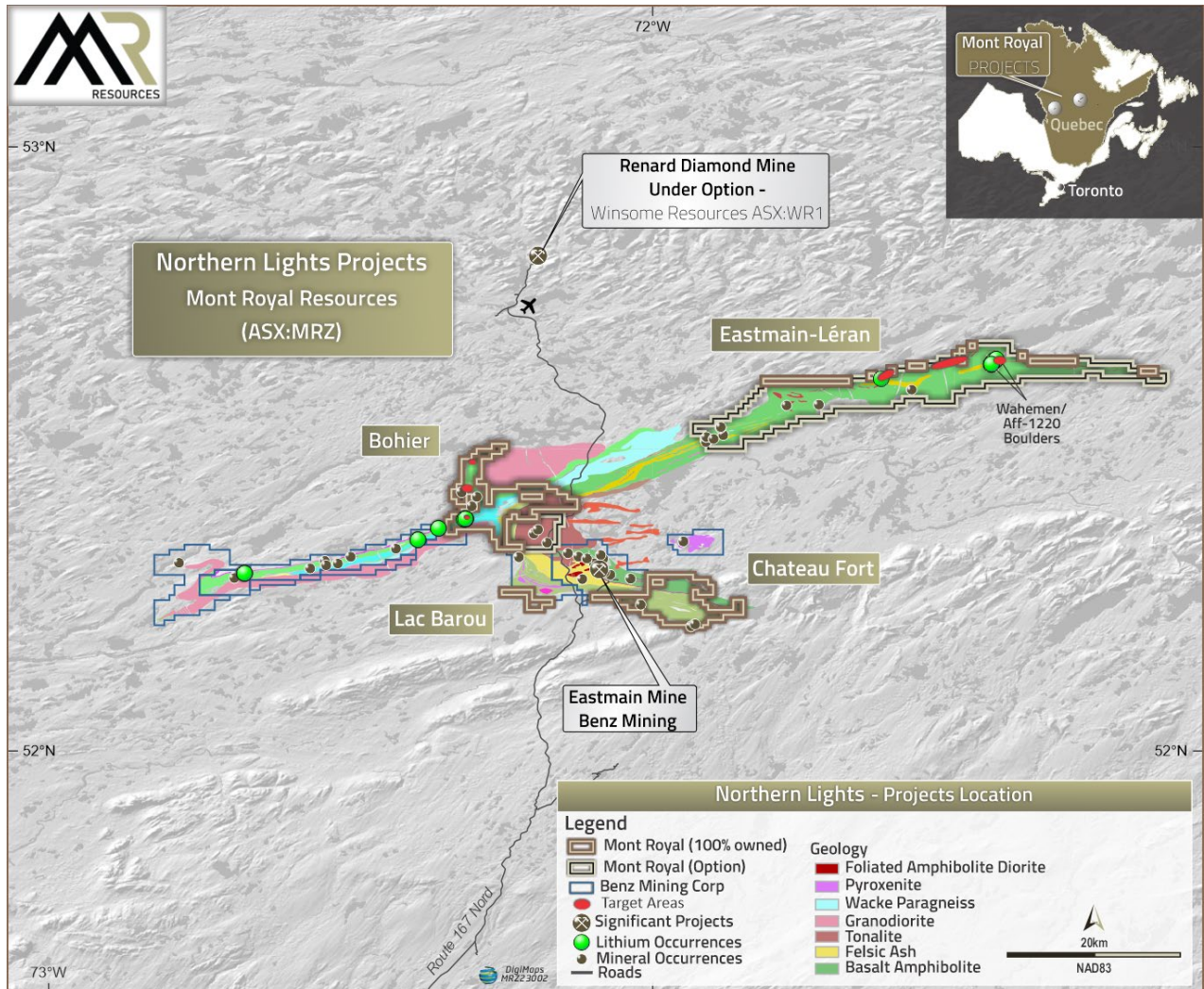


Figure 1: Location of MRZ's Northern Lights Projects in Quebec, Canada.

Bohier Project – Planned Fieldwork Programs

Fieldwork teams will initially mobilise to the Bohier Lithium Project in mid-June, with planned work programs to include helicopter-supported mapping and sampling programs.

This will include surface sampling of known pegmatites in the central and northern sections of the Bohier Property (see Figure 2). The targeted pegmatites were discovered in 2023 and show a similar chemistry (potassium and rubidium content) to known lithium-rich pegmatites in the region, providing strong evidence that these targets may represent a depleted zone within an otherwise lithium-rich intrusion, as is commonly seen in this type of deposit.

Additionally, the central and northern sections of the Bohier Property represent a strategically important exploration area for the Company given its proximity to the Renard Mine, currently the subject of an acquisition option by Winsome Resources (ASX: WR1).

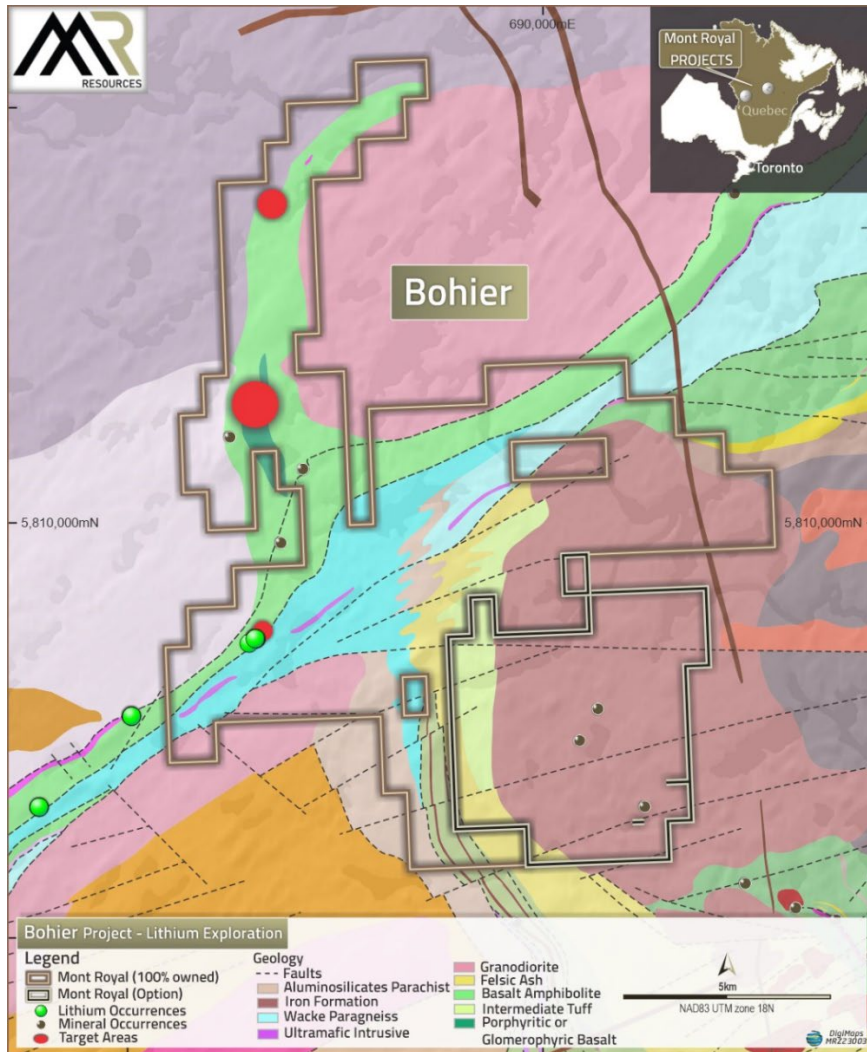


Figure 2: Bohier Project showing key targets for the current fieldwork program.

Winsome has announced that it will evaluate the potential to repurpose the existing processing facility at Renard (which has a design capacity of 2.2Mpta) to treat lithium-bearing materials from its flagship Adina Lithium Project, located 60km north of Renard (refer WR1 ASX Announcement – 3 April 2024).

Mont Royal considers the potential repurposing of the Renard processing plant for lithium production to be a major strategic benefit to all lithium companies (exploration and development) operating in the Upper Eastmain district, with the potential to establish a near-term, central processing hub for lithium deposits throughout the region.

Léran Project – Fieldwork Program

Following the completion of the fieldwork programs at Bohier, the team will then move to the Léran Project to undertake similar mapping and sampling programs. This will include surface sampling over the central and northern sections of the Léran property including several wide areas of potentially Li-bearing pegmatites (marked by the red circles in Figure 3) nearby known occurrences.

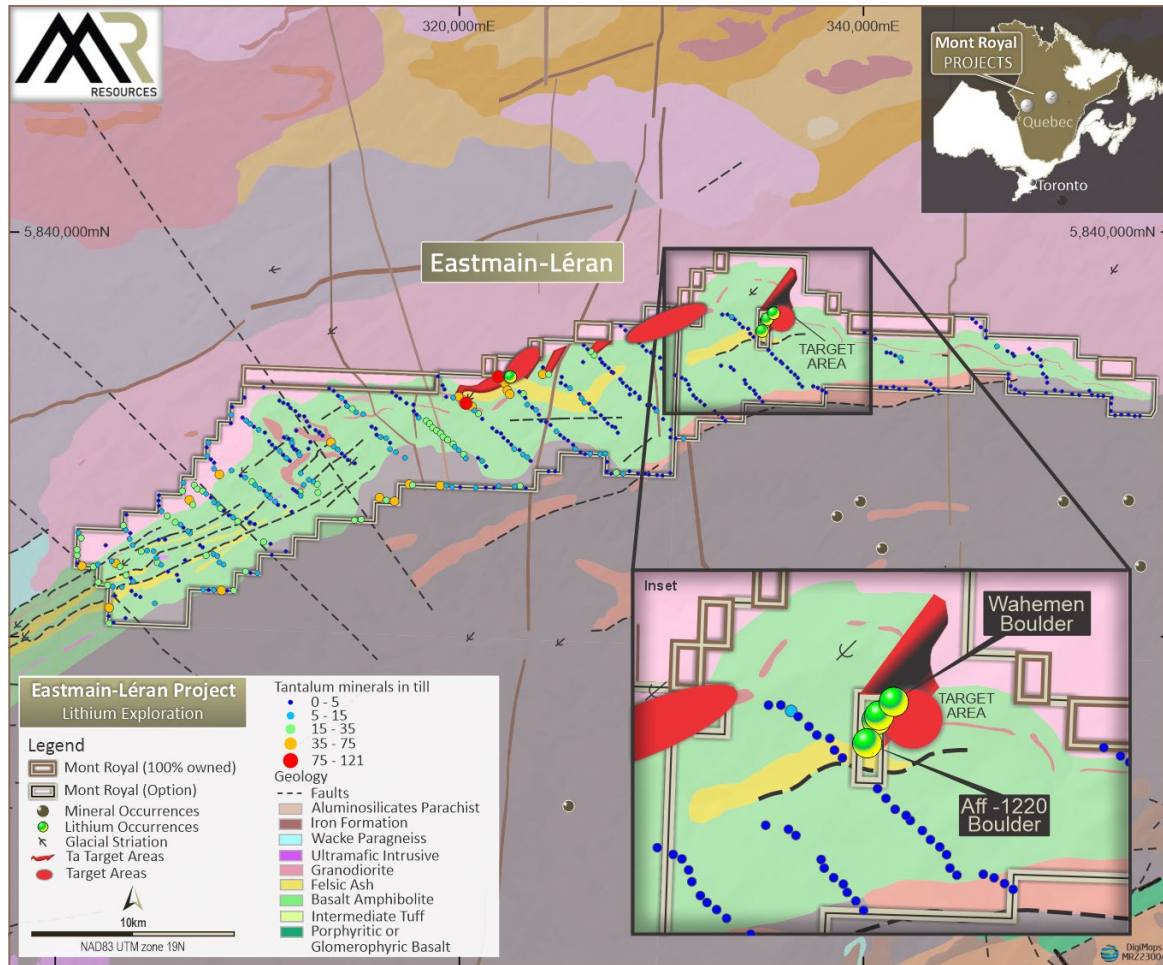


Figure 3: Léran Project showing key targets for the current fieldwork program

These programs are designed to further expand the Company's inventory of lithium targets at Léran for future drilling, and follow-up high-grade lithium results from previous sampling including grab samples of up to 4.02% and 3.51% Li_2O from spodumene-rich boulders (refer ASX Announcement – 21 November 2023).

Bohier Project – Drilling Program

Mont Royal has also completed planning for its maiden helicopter-supported diamond drilling program at the Bohier Project, which is scheduled to commence in mid-July.

Approximately 1,000m of diamond drilling has been planned, focusing on known lithium-bearing pegmatites and gravimetric anomalies in the south of the property area (see Figure 4).

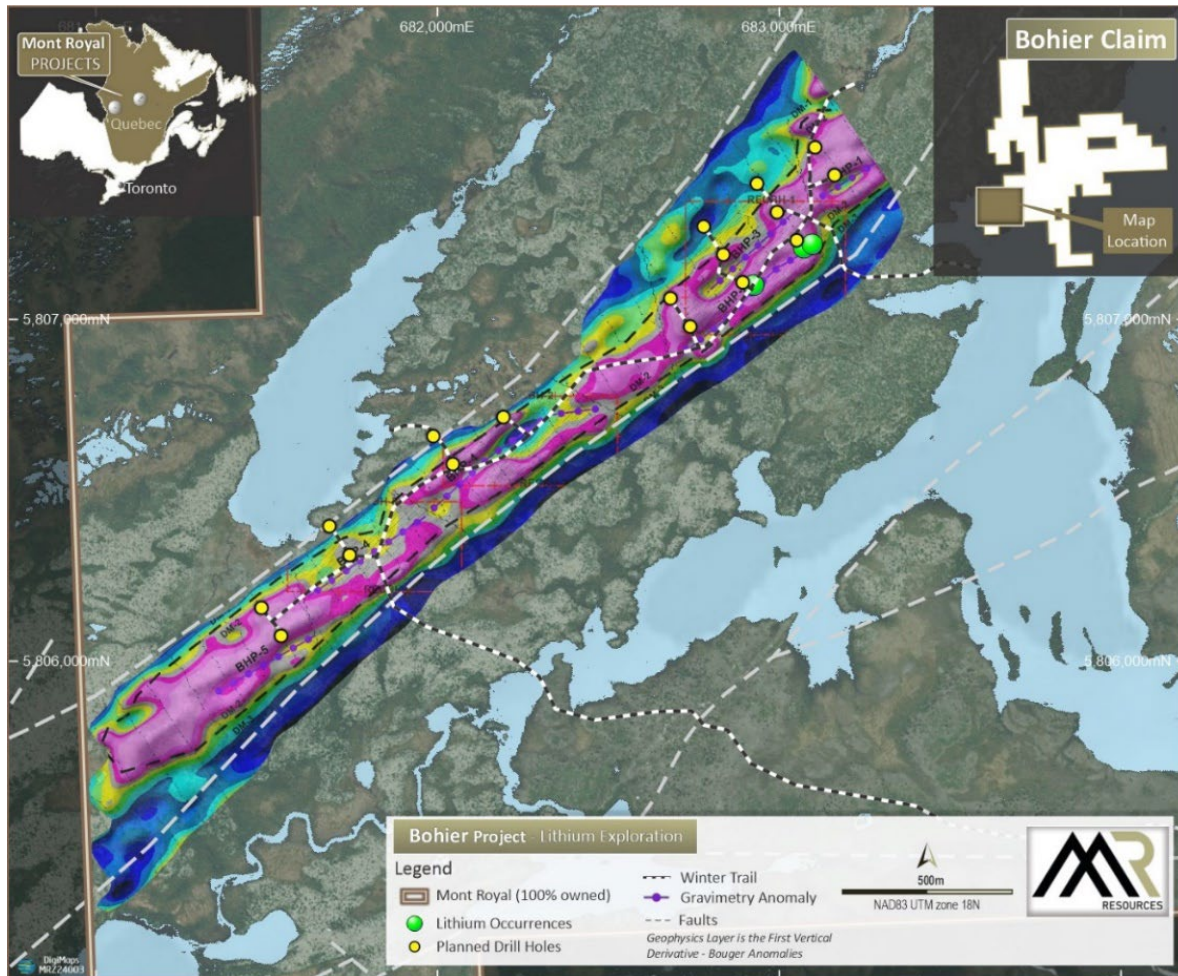


Figure 4: Planned drill collar locations, Bohier Project.

The drilling program is expected to take approximately 21 days to complete, including mobilisation and demobilisation. The core will be logged on site before being transported off-site for storage and assaying

Mont Royal has contracted experienced Canadian geological consultancy IOS Geosciences (IOS) to oversee and execute both the fieldwork programs and the upcoming drilling program.

Mont Royal Executive Director, Peter Ruse, commented: *“With the lithium market showing some positive signs of a sustained recovery in recent weeks, we are delighted to be back in the field at both our Bohier and Léran Projects to get our 2024 Summer Fieldwork Program underway.*

“Our work programs at Bohier will focus on the central and northern portions of the project area, which represent a priority focus for the Company given their proximity to the Renard Mine and Infrastructure to the north. Winsome Resources is currently evaluating the potential to redevelop Renard as a lithium processing operation, with positive implications for all lithium explorers and developers in the region.

“At the Léran Project, fieldwork programs will focus on adding to our existing suite of future drilling targets and following up high-grade results from previous sampling programs.

“We have also completed planning for an inaugural diamond drilling campaign at Bohier, which will kick off in mid-July targeting a suite of known lithium-bearing pegmatites and gravimetric anomalies.

“These programs represent the start of a significant lithium exploration push by Mont Royal, which we hope will generate strong news-flow over the remainder of the year.”

This announcement was approved for release by the Board.

ENDS.

For and on Behalf of the Board

Shaun Menezes | Company Secretary

For Further Information:

Peter Ruse

Executive Director

info@montroyalres.com

Nicholas Read

Investor and Media Relations

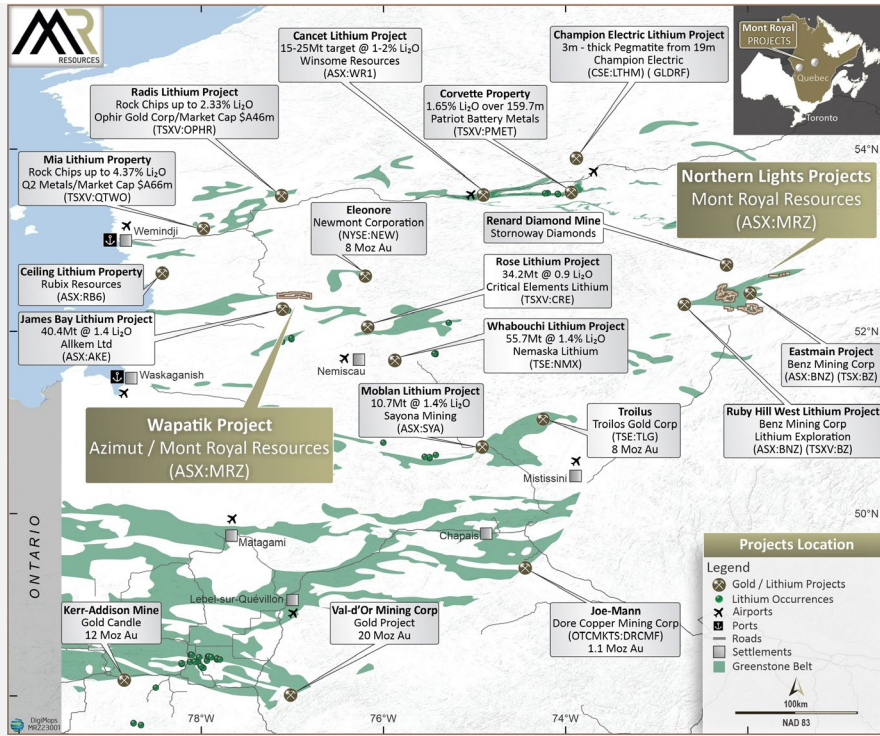
+61 419 929 046

nicholas@readcorporate.com.au

About Mont Royal Resources

Mont Royal Resources Limited (ASX: MRZ) is an Australian company that owns 75% of Northern Lights Minerals 536 km² tenement package located in the Upper Eastmain Greenstone belt. The projects are located in the emerging James Bay area, a Tier-1 mining jurisdiction of Quebec, Canada, and are prospective for lithium, precious (Gold, Silver) and base metals mineralisation (Copper, Nickel).

The Company has a JV option agreement with Azimut Exploration Inc. (TSXV: AZM), to earn-in up to 70% of the Wapatik Gold-Copper Nickel Project. For further information regarding Mont Royal Resources Limited, please visit the ASX platform (ASX: MRZ) or the Company's website www.montroyalres.com



[@MontRoyalRes](https://twitter.com/MontRoyalRes)



[Linkedin.com/Company/mont-royal-resources](https://www.linkedin.com/company/mont-royal-resources)



[Subscribe for Investor Updates](#)