

Appointment of Specialist to Conduct Rare Earth / Niobium Processing & Beneficiation

- Highly regarded mineralogy research and processing expert Professor Zhiguo He to assist in conducting detailed bench testing in an initial batch of Kameelburg’s REE and Niobium mineralised samples.
- Engagement to focus on beneficiation and economic recovery of REE and Niobium.
- A total of 252kg of mineralised samples successfully freighted and safely delivered to reputable Central South University of China.
- Professor He’s expertise and assistance, coupled with currently ongoing testwork at Bureau Veritas and Auralia in Perth, provides utmost confidence for a feasible metallurgical outcome for the Kameelburg Project.

Aldoro Resources Limited (“Aldoro”, “the Company”) (ASX:ARN) is pleased to advise that it has entered into an engagement with Dr. Zhiguo He of the Central South University of China (“Professor He”) to undertake a commercialisation review on the extraction of REE and Niobium minerals contained within the Company’s flagship Kameelburg Project (“Project Mineralisation”). The review will encompass processing and beneficiation of both Project Mineralisation and provide Aldoro two processes being:

1. The beneficiation process that delivers a high recovery rate of contained REE and Niobium.
2. The beneficiation process that produces a commercial grade concentrate of REE and Niobium from within the contained mineralisation.

The commercialisation review is expected to take several months and the shipment of 252kg of mineralised sample has been successfully to Professor He.

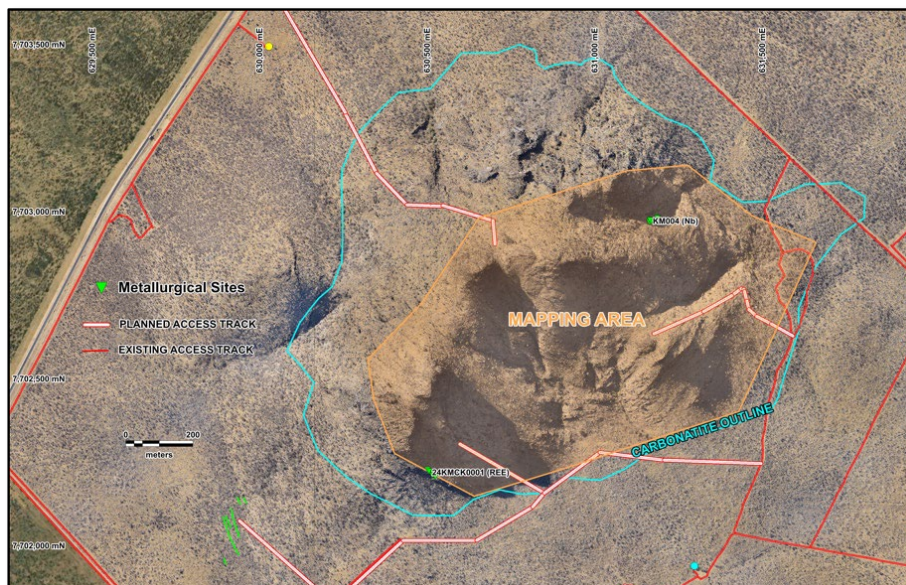


Figure 1: REE (24KMCK0001) and Nb (KM004B) sample locations, these are based on wet chemistry results of 6.6%TREO and 7439ppm Nb₂O₅ (see ARN announcements 18 April 2004 and 6 December 2023 respectfully)



Figure 2: Left, one(E) of the Nb core samples and right, one of the REE core samples(B).

Sample	Easting	Northing	RL(m)	Length (cm)	Weight (kg)	Test
24KMCK0001_A	630491	7702235	1623	88	19	REE
24KMCK0001_B	630496	7702230	1620	100	22.5	REE
24KMCK0001_C	630508	7702225	1618	100	20.5	REE
24KMCK0001_D	630505	7702219	1547	97	21	REE
24KMCK0001_E	630508	7702220	1608	90	20	REE
24KMCK0001_F	630515	7702214	1609	100	22	REE
			Total	575	125	
KM004C	631176	7702988	1621	83	18.5	Nb
KM004D	631172	7702979	1626	98	23.5	Nb
KM004E	631162	7702983	1628	96	22	Nb
KM004F	631153	7702976	1635	91	20.6	Nb
KM004G	631157	7702977	1620	101	23.5	Nb
KM004H	631155	7702982	1622	87	19.5	Nb
			Total	556	127.6	

Table 1: Summary of the Core samples collected for metallurgy.

Aldoro is conducting several streams of metallurgical bench testing, two in Perth at Bureau Veritas and Auralia under to guidance of an independent metallurgist and two in China at Central South University and Shenghe Resources Holding Co., a large manufacturer of rare earth products.

About Professor He

Dr Zhiguo He currently serves as a Full Professor at the Central South University of China, a globally recognised university for its technological advances in minerals processing and metallurgy. His research work is predominantly focussed on the beneficiation and extraction of metals from a variety of minerals and the use of biological processes in metal recovery from tailings and bioremediation. Professor He is highly regarded in the processing methodology field having successfully completed various processing studies in the past 5 years.

This Announcement has been approved for release by the Board of Aldoro Resources Ltd

About Aldoro Resources

Aldoro Resources Ltd is an ASX-listed (**ASX: ARN**) mineral exploration and development company. Aldoro has a portfolio of critical minerals including rare earth, lithium, rubidium and base metal projects. The Company's suite of projects include the Kameelburg REE Project in Namibia, the Wyemandoo lithium-rubidium-tungsten project, the Niobe lithium-rubidium-tantalum Project and the Narndee Igneous Complex in Western Australia.

Disclaimer

Some of the statements appearing in this announcement may be in the nature of forward-looking statements. You should be aware that such statements are only predictions and are subject to inherent risks and uncertainties. Those risks and uncertainties include factors and risks specific to the industries in which Aldoro operates and proposes to operate as well as general economic conditions, prevailing exchange rates and interest rates and conditions in the financial markets, among other things. Actual events or results may differ materially from the events or results expressed or implied in any forward-looking statement. No forward-looking statement is a guarantee or representation as to future performance or any other future matters, which will be influenced by a number of factors and subject to various uncertainties and contingencies, many of which will be outside Aldoro's control.

Aldoro does not undertake any obligation to update publicly or release any revisions to these forward-looking statements to reflect events or circumstances after today's date or to reflect the occurrence of unanticipated events. No representation or warranty, express or implied, is made as to the fairness, accuracy, completeness or correctness of the information, opinions or conclusions contained in this announcement. To the maximum extent permitted by law, none of Aldoro, its Directors, employees, advisors or agents, nor any other person, accepts any liability for any loss arising from the use of the information contained in this announcement. You are cautioned not to place undue reliance on any forward-looking statement. The forward-looking statements in this announcement reflect views held only as of the date of this announcement.

This announcement is not an offer, invitation or recommendation to subscribe for or purchase securities by Aldoro. Nor does this announcement constitute investment or financial product advice (nor tax, accounting or legal advice) and is not intended to be used for the basis of making an investment decision. Investors should obtain their own advice before making any investment decision.

Competent Person Statement

The information in this announcement that relates to Exploration Results and other technical information complies with the 2012 Edition of the Australasian Code for Reporting of Exploration Results, Mineral Resources and Ore Reserves (JORC Code). It has been compiled and assessed under the supervision of Mark Mitchell, technical director for Aldoro Resources Ltd. Mr Mitchell is a Member of the Australasian Institute of Geoscientists and has sufficient experience that is relevant to the style of mineralisation and type of deposit under consideration and to the activity being undertaken to qualify as a Competent Person as defined in the 2012 Edition of the JORC Code. Mr Mitchell consents to the inclusion in this announcement of the matters based on his information in the form and context in which it appears.

<i>Criteria</i>	<i>JORC Code explanation</i>	<i>Commentary</i>
<i>Sampling techniques</i>	<ul style="list-style-type: none"> • <i>Nature and quality of sampling (eg cut channels, random chips, or specific specialised industry standard measurement tools appropriate to the minerals under investigation, such as downhole gamma sondes, or handheld XRF instruments, etc). These examples should not be taken as limiting the broad meaning of sampling.</i> • <i>Include reference to measures taken to ensure sample representivity and the appropriate calibration of any measurement tools or systems used.</i> • <i>Aspects of the determination of mineralisation that are Material to the Public Report.</i> • <i>In cases where ‘industry standard’ work has been done this would be relatively simple (eg’ reverse circulation drilling was used to obtain 1 m samples from which 3 kg was pulverised to produce a 30 g charge for fire assay’). In other cases more explanation may be required, such as where there is coarse gold that has inherent sampling problems. Unusual commodities or mineralisation types (eg submarine nodules) may warrant disclosure of detailed information.</i> 	<ul style="list-style-type: none"> • Drilling conducted using a Hilti portable drill with a 100mm diameter diamond core barrel. • Individual core lengths up to 1m were collected for bench tests. • Multiple holes drilled at each site to obtain the fresher material. • Samples collected from multiple sites across the carbonatite
<i>Drilling techniques</i>	<ul style="list-style-type: none"> • <i>Drill type (eg core, reverse circulation, open-hole hammer, rotary air blast, auger, Bangka, sonic, etc) and details (eg core diameter, triple or standard tube, depth of diamond tails, face-sampling bit or other type, whether core is oriented and if so, by what method, etc).</i> 	<ul style="list-style-type: none"> • Diamond core, holes were vertical into selected sites.
<i>Drill sample recovery</i>	<ul style="list-style-type: none"> • <i>Method of recording and assessing core and chip sample recoveries and results assessed.</i> • <i>Measures taken to maximise sample recovery and ensure representative nature of the samples.</i> • <i>Whether a relationship exists between sample recovery and</i> 	<ul style="list-style-type: none"> • Core lengths varied due to breakage at weakness in the 1m core. • Multiple sites taken across the Carbonatite targeting the beforosite facies. • No relationship was established between sample recovery and

Criteria	JORC Code explanation	Commentary
	<i>grade and whether sample bias may have occurred due to preferential loss/gain of fine/coarse material.</i>	grade.
Logging	<ul style="list-style-type: none"> • Whether core and chip samples have been geologically and geotechnically logged to a level of detail to support appropriate Mineral Resource estimation, mining studies and metallurgical studies. • Whether logging is qualitative or quantitative in nature. Core (or costean, channel, etc) photography. • The total length and percentage of the relevant intersections logged. 	<ul style="list-style-type: none"> • No detailed logging across the 1m interval only a rock classification. • Logging was considered quantitative in nature.
Sub-sampling techniques and sample preparation	<ul style="list-style-type: none"> • If core, whether cut or sawn and whether quarter, half or all core taken. • If non-core, whether riffled, tube sampled, rotary split, etc and whether sampled wet or dry. • For all sample types, the nature, quality and appropriateness of the sample preparation technique. • Quality control procedures adopted for all sub-sampling stages to maximise representivity of samples. • Measures taken to ensure that the sampling is representative of the in situ material collected, including for instance results for field duplicate/second-half sampling. • Whether sample sizes are appropriate to the grain size of the material being sampled. 	<ul style="list-style-type: none"> • Core was kept whole for metallurgical purposes. • The core sampling and the techniques applied are appropriate for metallurgical investigations. They are intended to be used is TREE and Nb recovery purposes. • The quality control procedures for the core sampling are considered appropriate. • Due to the small number of metallurgical samples these are not considered representative and not used in resource calculations, the sampling is considered adequate. • The size of the samples is considered appropriate for initial bench testing.
Quality of assay data and laboratory tests	<ul style="list-style-type: none"> • The nature, quality and appropriateness of the assaying and laboratory procedures used and whether the technique is considered partial or total. • For geophysical tools, spectrometers, handheld XRF instruments, etc, the parameters used in determining the analysis including instrument make and model, reading times, calibrations factors 	<ul style="list-style-type: none"> • The core samples were consigned to Professor He at Central South University in China for bench testing which includes crushing homogenising for head assay analysis. • Standards are not considered relevant to the metallurgical process.

Criteria	JORC Code explanation	Commentary
	<p><i>applied and their derivation, etc.</i></p> <ul style="list-style-type: none"> • <i>Nature of quality control procedures adopted (eg standards, blanks, duplicates, external laboratory checks) and whether acceptable levels of accuracy (ie lack of bias) and precision have been established.</i> 	
Verification of sampling and assaying	<ul style="list-style-type: none"> • <i>The verification of significant intersections by either independent or alternative company personnel.</i> • <i>The use of twinned holes.</i> • <i>Documentation of primary data, data entry procedures, data verification, data storage (physical and electronic) protocols.</i> • <i>Discuss any adjustment to assay data.</i> 	<ul style="list-style-type: none"> • No verification sampling required as the samples are for bench testing for REE and Nb extraction.
Location of data points	<ul style="list-style-type: none"> • <i>Accuracy and quality of surveys used to locate drill holes (collar and down-hole surveys), trenches, mine workings and other locations used in Mineral Resource estimation.</i> • <i>Specification of the grid system used.</i> • <i>Quality and adequacy of topographic control.</i> 	<ul style="list-style-type: none"> • The datum used is WGS84-33S, • Orthophotos were acquired using a digital camera mounted in a fixed wing aircraft. Ground control points were used for Topographic control
Data spacing and distribution	<ul style="list-style-type: none"> • <i>Data spacing for reporting of Exploration Results.</i> • <i>Whether the data spacing and distribution is sufficient to establish the degree of geological and grade continuity appropriate for the Mineral Resource and Ore Reserve estimation procedure(s) and classifications applied.</i> • <i>Whether sample compositing has been applied.</i> 	<ul style="list-style-type: none"> • The metallurgical samples were targeted using historical analytical data and site evaluation (wide outcrop with limited surface alteration). • The core samples are designed for developing a metal recovery flow sheet that is scalable. The results are not considered in any context of mineral grade or resource estimation. Therefore, no resource inferences can be made. The drilling data is not sufficient to indicate any continuity of mineralisation at depth. • No mineral compositing has been done for the core.
Orientation of data in relation to	<ul style="list-style-type: none"> • <i>Whether the orientation of sampling achieves unbiased sampling of possible structures and the extent to which this is known, considering the deposit type.</i> 	<ul style="list-style-type: none"> • The core sites were based on the various befor-site phases for designing a metallurgical extraction process for REE and Nb. • The type of drilling and scope of the sampling is not aimed at

Criteria	JORC Code explanation	Commentary
<i>geological structure</i>	<ul style="list-style-type: none"> If the relationship between the drilling orientation and the orientation of key mineralised structures is considered to have introduced a sampling bias, this should be assessed and reported if material. 	identifying key mineralisation structural orientations.
<i>Sample security</i>	<ul style="list-style-type: none"> The measures taken to ensure sample security. 	<ul style="list-style-type: none"> Samples were collected by company personnel and chaperoned until freighted by DHL to Central South University.
<i>Audits or reviews</i>	<ul style="list-style-type: none"> The results of any audits or reviews of sampling techniques and data. 	<ul style="list-style-type: none"> No audit reviews were conducted

Section 2 Reporting of Exploration Results

(Criteria listed in the preceding section also apply to this section.)

Criteria	JORC Code explanation	Commentary
<i>Mineral tenement and land tenure status</i>	<ul style="list-style-type: none"> Type, reference name/number, location and ownership including agreements or material issues with third parties such as joint ventures, partnerships, overriding royalties, native title interests, historical sites, wilderness or national park and environmental settings. The security of the tenure held at the time of reporting along with any known impediments to obtaining a licence to operate in the area. 	<ul style="list-style-type: none"> Exclusive Prospecting Licence EPL 7373 is held by Aldoro's JV partner Logan Exploration and Investments CC, the licence is currently being renewed. No native title, wilderness or National Parks impacted. Licences are on local pastoral licences, sub surface minerals owned by the state. All three Project EPL's are held by the related agreement parties. All three licences have renewals pending, as this is their first renewal period no impediments are envisaged. All necessary documents to fulfil the renewal process have been lodged.
<i>Exploration done by other parties</i>	<ul style="list-style-type: none"> Acknowledgment and appraisal of exploration by other parties. 	<ul style="list-style-type: none"> Previous relevant exploration was undertaken by: AMCOR (1960s-70s), results are not quoted in this release. Kinloch Resources Limited (2012-2016), results are not quoted in this release
<i>Geology</i>	<ul style="list-style-type: none"> Deposit type, geological setting and style of mineralisation. 	<ul style="list-style-type: none"> The Kameelburg Project is located in the northern Central Damara Orogenic Belt in Namibia and covers the Cretaceous Kameelburg Carbonatite plug and associated radial dykes intruding precursor syenites in the older host Neoproterozoic

Criteria	JORC Code explanation	Commentary
		<p>marbles and schists. The plug is approximately 1.4km in diameter and rises up to 275m above the surrounding peneplain. The intrusion consists of an initial pre-cursor phase of nepheline syenite/syenite followed by two sovite and three beforosite phases with remanent rafts of volcanic breccia and syenite, the vestiges of earlier intrusive phases. The country rock consists of marbles, quartzite's, mica schists of the Damara Supergroup. Rare earth metals are known to occur in all five phases with higher concentrations in the more magnesium and iron rich before sites. The REE mineralisation style is consistent with fractionated carbonatite intrusive plugs.</p>
<p>Drill hole Information</p>	<ul style="list-style-type: none"> • <i>A summary of all information material to the understanding of the exploration results including a tabulation of the following information for all Material drill holes:</i> <ul style="list-style-type: none"> ○ <i>easting and northing of the drill hole collar</i> ○ <i>elevation or RL (Reduced Level – elevation above sea level in metres) of the drill hole collar</i> ○ <i>dip and azimuth of the hole</i> ○ <i>down hole length and interception depth</i> ○ <i>hole length.</i> • <i>If the exclusion of this information is justified on the basis that the information is not Material and this exclusion does not detract from the understanding of the report, the Competent Person should clearly explain why this is the case.</i> 	<ul style="list-style-type: none"> • Rock assay results have previously been tabulated, see ASX:ARN 20 March 2023) in the report have co-ordinates and RL's, see table in the release • Drilling information is supplied in the text. All holes were short vertical holes designed to collect enough material for bench testing. • No pertinent information has been excluded in this release.
<p>Data aggregation methods</p>	<ul style="list-style-type: none"> • <i>In reporting Exploration Results, weighting averaging techniques, maximum and/or minimum grade truncations (eg cutting of high grades) and cut-off grades are usually Material and should be stated.</i> • <i>Where aggregate intercepts incorporate short lengths of high</i> 	<ul style="list-style-type: none"> • No weighting or averaging techniques or truncations are undertaken. • No data aggregation methods were used. • No metal equivalents have been used.

Criteria	JORC Code explanation	Commentary
	<p><i>grade results and longer lengths of low grade results, the procedure used for such aggregation should be stated and some typical examples of such aggregations should be shown in detail.</i></p> <ul style="list-style-type: none"> The assumptions used for any reporting of metal equivalent values should be clearly stated. 	
Relationship between mineralisation widths and intercept lengths	<ul style="list-style-type: none"> These relationships are particularly important in the reporting of Exploration Results. If the geometry of the mineralisation with respect to the drill hole angle is known, its nature should be reported. If it is not known and only the down hole lengths are reported, there should be a clear statement to this effect (eg 'down hole length, true width not known'). 	<ul style="list-style-type: none"> No relationships between mineralisation widths and intercepts have been made. No comment on the geometry of the mineralisation has been made. Conversion of down hole to True width has not been done as no down hole orientation data is available.
Diagrams	<ul style="list-style-type: none"> Appropriate maps and sections (with scales) and tabulations of intercepts should be included for any significant discovery being reported These should include, but not be limited to a plan view of drill hole collar locations and appropriate sectional views. 	<ul style="list-style-type: none"> Appropriate location and geology maps are presented in the body of the announcement
Balanced reporting	<ul style="list-style-type: none"> Where comprehensive reporting of all Exploration Results is not practicable, representative reporting of both low and high grades and/or widths should be practiced to avoid misleading reporting of Exploration Results. 	<ul style="list-style-type: none"> Standard REE reporting methods used and compliant with JORC 2012. Y is included in the TREO calculations. $Total\ Rare\ Earth\ Oxide\ TREO = La_2O_3 + Ce_2O_3 + Pr_6O_{11} + Nd_2O_3 + Sm_2O_3 + Eu_2O_3 + Gd_2O_3 + Tb_4O_7 + Dy_2O_3 + Ho_2O_3 + Er_2O_3 + Tm_2O_3 + Yb_2O_3 + Lu_2O_3 + Y_2O_3$ $NdPr\ (\%TREO) = (Nd_2O_3 + Pr_6O_{11})/TREO$ $LREO = La_2O_3 + Ce_2O_3 + Pr_6O_{11} + Nd_2O_3$ $HREO = Sm_2O_3 + Eu_2O_3 + Gd_2O_3 + Tb_4O_7 + Dy_2O_3 + Ho_2O_3 + Er_2O_3 + Tm_2O_3 + Yb_2O_3 + Lu_2O_3 + Y_2O_3$ $NdPr = Nd_2O_3 + Pr_6O_{11}$ $SEG = Sm_2O_3 + Eu_2O_3 + Gd_2O_3$ $TbDy = Tb_4O_7 + Dy_2O_3$

Criteria	JORC Code explanation	Commentary																																																									
		<table border="1"> <thead> <tr> <th>Element</th> <th>Oxide Factor</th> <th>Oxide Form</th> </tr> </thead> <tbody> <tr><td>Nb</td><td>1.4305</td><td>Nb2O5</td></tr> <tr><td>Ce</td><td>1.2284</td><td>Ce2O3</td></tr> <tr><td>Dy</td><td>1.1477</td><td>Dy2O3</td></tr> <tr><td>Er</td><td>1.1435</td><td>Er2O3</td></tr> <tr><td>Eu</td><td>1.1579</td><td>Eu2O3</td></tr> <tr><td>Gd</td><td>1.1526</td><td>Gd2O3</td></tr> <tr><td>Ho</td><td>1.1455</td><td>Ho2O3</td></tr> <tr><td>La</td><td>1.1728</td><td>La2O3</td></tr> <tr><td>Lu</td><td>1.1371</td><td>Lu2O3</td></tr> <tr><td>Nd</td><td>1.1664</td><td>Nd2O3</td></tr> <tr><td>Pr</td><td>1.2082</td><td>Pr7O11</td></tr> <tr><td>Sm</td><td>1.1596</td><td>Sm2O3</td></tr> <tr><td>Tb</td><td>1.1762</td><td>Tb4O7</td></tr> <tr><td>Tm</td><td>1.1421</td><td>Tm2O3</td></tr> <tr><td>Y</td><td>1.2699</td><td>Y2O3</td></tr> <tr><td>Yb</td><td>1.1387</td><td>Yb2O3</td></tr> <tr><td>U</td><td>1.1792</td><td>U3O8</td></tr> <tr><td>Th</td><td>1.1379</td><td>ThO2</td></tr> </tbody> </table>	Element	Oxide Factor	Oxide Form	Nb	1.4305	Nb2O5	Ce	1.2284	Ce2O3	Dy	1.1477	Dy2O3	Er	1.1435	Er2O3	Eu	1.1579	Eu2O3	Gd	1.1526	Gd2O3	Ho	1.1455	Ho2O3	La	1.1728	La2O3	Lu	1.1371	Lu2O3	Nd	1.1664	Nd2O3	Pr	1.2082	Pr7O11	Sm	1.1596	Sm2O3	Tb	1.1762	Tb4O7	Tm	1.1421	Tm2O3	Y	1.2699	Y2O3	Yb	1.1387	Yb2O3	U	1.1792	U3O8	Th	1.1379	ThO2
Element	Oxide Factor	Oxide Form																																																									
Nb	1.4305	Nb2O5																																																									
Ce	1.2284	Ce2O3																																																									
Dy	1.1477	Dy2O3																																																									
Er	1.1435	Er2O3																																																									
Eu	1.1579	Eu2O3																																																									
Gd	1.1526	Gd2O3																																																									
Ho	1.1455	Ho2O3																																																									
La	1.1728	La2O3																																																									
Lu	1.1371	Lu2O3																																																									
Nd	1.1664	Nd2O3																																																									
Pr	1.2082	Pr7O11																																																									
Sm	1.1596	Sm2O3																																																									
Tb	1.1762	Tb4O7																																																									
Tm	1.1421	Tm2O3																																																									
Y	1.2699	Y2O3																																																									
Yb	1.1387	Yb2O3																																																									
U	1.1792	U3O8																																																									
Th	1.1379	ThO2																																																									
Other substantive exploration data	<ul style="list-style-type: none"> Other exploration data, if meaningful and material, should be reported including (but not limited to): geological observations; geophysical survey results; geochemical survey results; bulk samples – size and method of treatment; metallurgical test results; bulk density, groundwater, geotechnical and rock characteristics; potential deleterious or contaminating substances. 	<ul style="list-style-type: none"> All relevant data has been reported 																																																									
Further work	<ul style="list-style-type: none"> The nature and scale of planned further work (eg tests for lateral extensions or depth extensions or large-scale step-out drilling). Diagrams clearly highlighting the areas of possible extensions, including the main geological interpretations and future drilling areas, provided this information is not commercially sensitive. 	<ul style="list-style-type: none"> Short term future work plans involves geological mapping, infill sampling, modelling for drill collar locations and drilling. The metallurgical sampling was outlined in the ASX:ARN 26 September 2023. No diagrams of future work are provided in this release. 																																																									