



# VENTURE MINERALS

## Jupiter Rising

[ventureminerals.com.au](http://ventureminerals.com.au)

RELIABLE • RESPONSIBLE • SUSTAINABLE

ASX:VMS







## EXPLORATIONS RESULTS

The information in this presentation that relates to Exploration Results was reported by VMS in accordance with ASX Listing Rule 5.7 and the JORC Code (2012 edition) in the ASX announcements listed below. Copies of those announcements are available at [www.asx.com.au](http://www.asx.com.au). The Competent Person for those Exploration Results in the announcements was Dr. Stuart Owen. VMS confirms that it is not aware of any new information or data that materially affects the Exploration Results information included in those market announcements. VMS confirms that the form and context in which the Competent Person's findings are presented have not been materially modified from those market announcements.

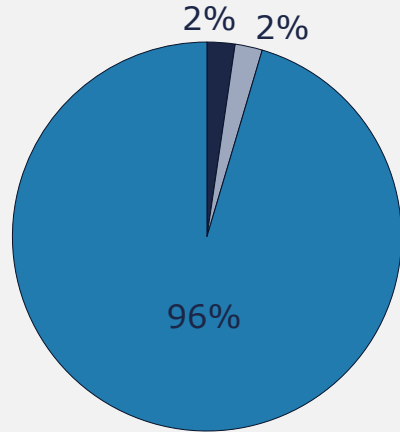
*"8m @ 5,716ppm TREO- Jupiter Drilling Continues to Outperform" 5 June 2024*  
*Drilling Delivers More Record REE Intersections at Jupiter" 23 May 2024*  
*"Jupiter-more outstanding REE hits up to 60 m over 2000 ppm" 16 April 2024*  
*"Strategic Acquisition Adjacent to Jupiter REE Discovery" 22 March 2024*  
*"300 Drillhole Program Commences at Jupiter" 15 March 2024*  
*"Jupiter Continues to Deliver with Record NdPr over 5,000 ppm" 8 March 2024*  
*"Jupiter delivers record drill hit of 48 m @ 3,025 ppm TREO" 9 February 2024*  
*"Jupiter Delivers over 7,000 ppm TREO from Maiden RC Drilling" 29 November 2023*  
*"Massive new REE Target at Brothers with up to 3,969 ppm TREO" 9 November 2023*  
*"VMS makes High Grade clay hosted REE discover at Brothers" 1 August 2023*  
*"Venture set to drill at the Iron Duke High Grade REE Project" 18 May 2023*  
*"JV into Neighbouring REE project with 49m @ 1313ppm TREO" 9 May 2023*

# Large Scale, High Grade, Strategic Location

---

- **Broad, Continuous high-grade mineralisation over 40km<sup>2</sup>**
  - ◇ +2,000ppm TREO over 20m – 30m widths within
  - ◇ +1,000ppm TREO c. 80m widths
  - ◇ 23% MREO in +1,000ppm material
  - ◇ Incredibly low Thorium and Uranium
- **Strategic Location**
  - ◇ 250km East of Geraldton Port
  - ◇ on Bitumen Road
- **Clear plan to deliver Major Milestone**
  - ◇ Maiden Resource Estimate

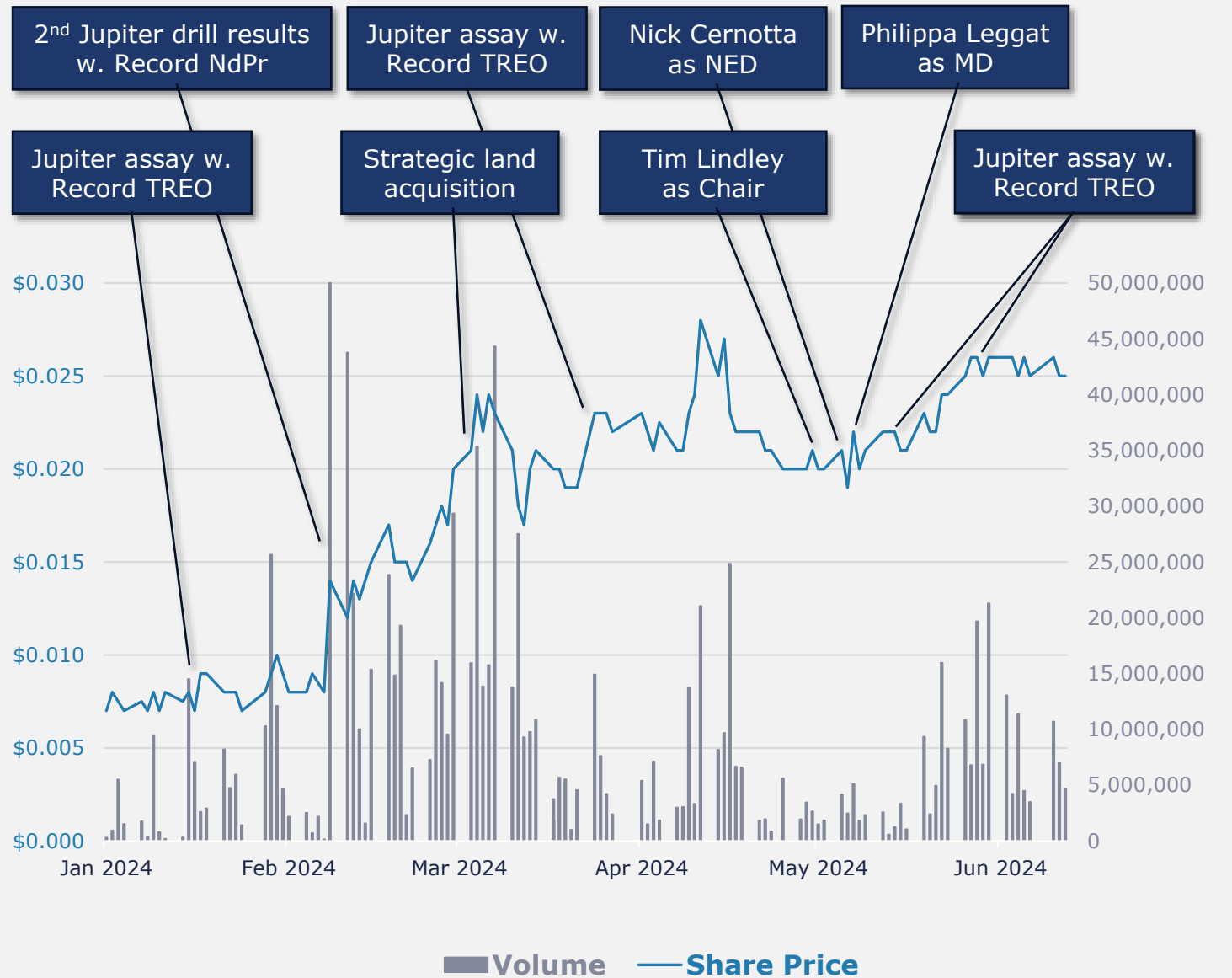
## Shareholding



■ Elphinstone Holdings ■ WGS ■ Retail

## Market Snapshot ASX: VMS

Share price	2.6c
Market capitalisation	\$58.9m
Cash balance (31 Mar 24)	2.9m
Enterprise value	\$56m
Shares on issue	2,266m
Unlisted options (5.5m @ Var Prices and 85m incentive options)	90.5m
Listed Options (VMSO @ \$0.036)	346.8m





**TIM Lindley** MCom, BA, RMC-D, GAICD, FGIA  
Non-Executive Chair

Tim is an experienced ASX board director and previous senior investment banker who brings a proven track record in resource company equity raising, project finance, debt, and M&A. During his 25-year executive career, he held several senior and executive roles in both Australia and internationally, including Country Head (Australia) of Barclays Bank and a Managing Director of Morgan Stanley (Australia). Tim is currently a Non-Executive Director of Deep Yellow Ltd (ASX: DYL), Serendis Pty Ltd, and the Wayside Chapel. He was previously a Non-Executive Director and Chair of the Audit and Risk Committee for Onsite Rentals Group Pty Ltd and Little Wings. Tim has a master's degree in economics and finance, and a bachelor's degree in history and economics, from the University of New South Wales. He is a Graduate of the Australian Institute of Company Directors (GAICD) and a Fellow of the Governance Institute of Australia (FGIA). Tim was also a Commissioned Officer graduate of the Royal Military College Duntroon and currently holds a commercial pilot's license (MEA CIR, FIR G2) and actively flies as a volunteer pilot for the community service aeromedical charity Angel Flight.



**PHILIPPA Leggat** BCom (Financial Management), BA (Jewellery, Gemmology), GAICD  
Managing Director

Philippa is a mineral industry executive with over 20 years of experience in advancing domestic and international projects along the value chain. She has served as an executive director and advisor to ASX listed companies engaged in capital raising, exploration, development and project evaluation. She has a track record of negotiating value accretive project acquisitions and effectively communicating an organisation's competitive advantages to raise its profile. In addition to her advisory work, Philippa previously served in ASX-listed companies as CEO of Comet Resources, Executive Director of Geopacific Resources and Non-Executive Director of Kula Gold, and Ensurance Ltd. She is currently a Non-Executive Director of Harena Resources, a private Australian company that is focused on developing a large Ionic Clay Rare Earths Project in Madagascar. Philippa is currently studying a master's degree in Data Science Strategy and Leadership through RMIT, with a view to improving her ability to assist companies to use their data to gain insights and make better decisions. Philippa holds bachelor degrees in Commerce (financial management) and Art (jewellery and gemmology). She is a graduate member of the Australian Institute of Company Directors.



**NICK Cernotta** B.Eng (Mining)  
Non-Executive Director

Nick is a mining engineer with 40 years' experience in the mining industry, spanning various commodities and operations in Australia and in multiple jurisdictions overseas, including Africa, South-East Asia, Mongolia and Saudi Arabia to state a few. Nick has held senior executive roles with extensive operational experience in both the public and private sectors of the mineral resources industry. More notable roles, include Director of Operations at Fortescue Metals Group Ltd, Chief Operating Officer at MacMahon Contracting and Director of Operations at Barrick Gold and CEO of GBF Underground Mining Company. More current is Nick's career as a professional Non-Executive Director, for two ASX 50, ASX 100 and ASX 300 listed companies. The current portfolio of companies include established operations and grass roots developments for Nickel, Cobalt, Copper, Gold and Lithium.

Nick is a Non-Executive Director of Pilbara Minerals Limited and Northern Star Resources, and Non-Executive Chair of Panoramic Resources.



# Strong Capability and Technical Expertise



**JAMIE** Byrde BComm, CA  
CFO and Company Secretary

Jamie has over 16 years' experience in corporate advisory, public and private company management since commencing his career with Big four and mid-tier Chartered Accounting Firms positions. Jamie specialises in Financial Management, ASX and ASIC compliance and Corporate Governance of mineral and resource focused public companies. He is also currently Company Secretary for Blackstone Minerals Limited.



**DR. STUART** Owen BSc (Geology), PhD (Geology)  
Exploration Manager

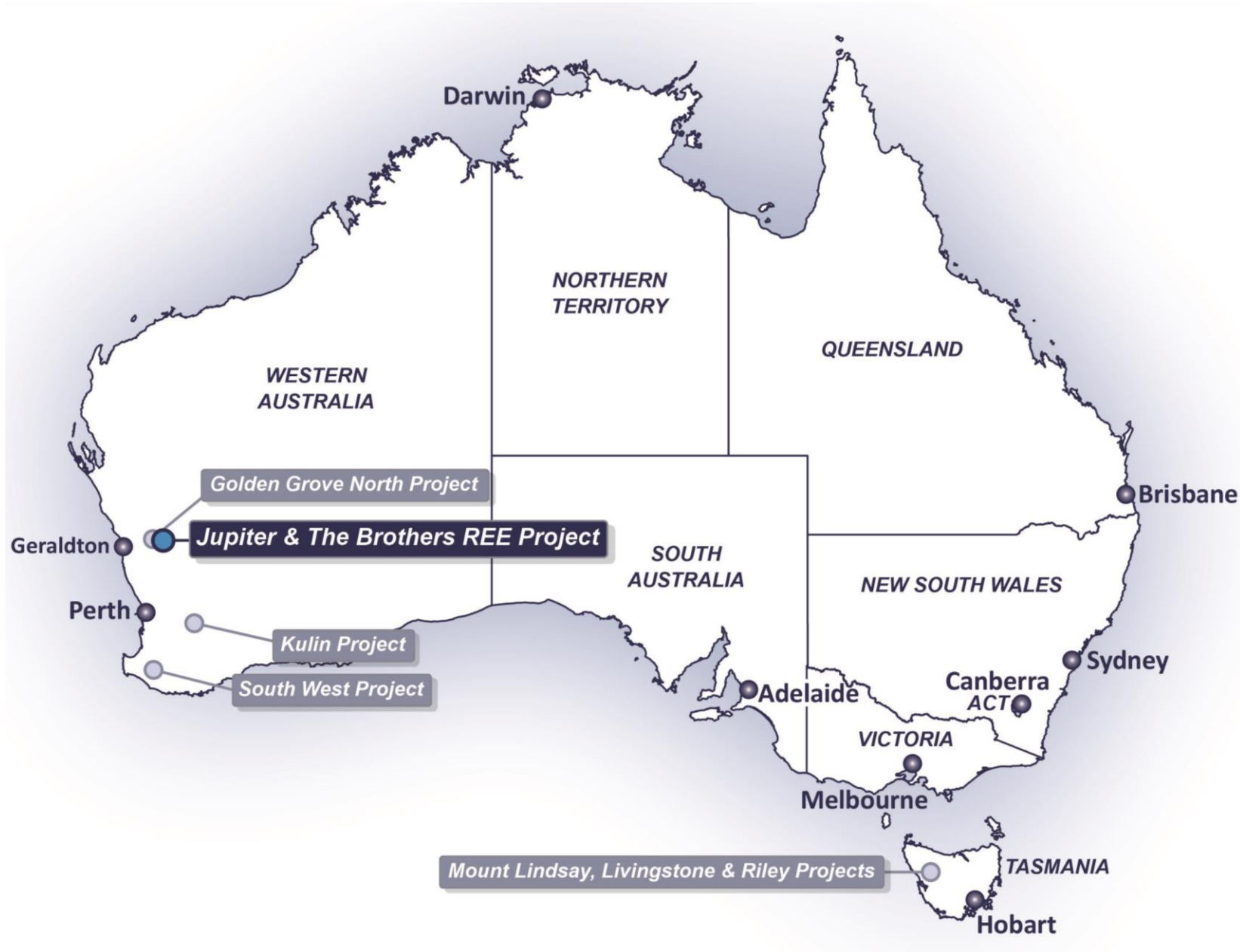
Dr Stuart Owen is a Geologist with over 25 years of experience in mineral exploration. He has been instrumental in the discovery and development of multiple projects across four continents. Stuart's technical leadership has seen the discovery of high-grade gold deposits in Australia, such as the Paulsens Deposit, as well as multi-million ounce gold discoveries in Africa during his time as exploration manager for Adamus Resources. More recently Dr Owen has led the team defining a large nickel sulphide discovery in Vietnam and has been the driver behind in the greenfields discovery of Venture's Jupiter Project. Dr Owen received a PhD in Geology from the University of Otago and possesses a depth of experience in both exploration and development, across precious and base metals, as well as a broad range of other commodities including uranium, iron ore and rare earths.



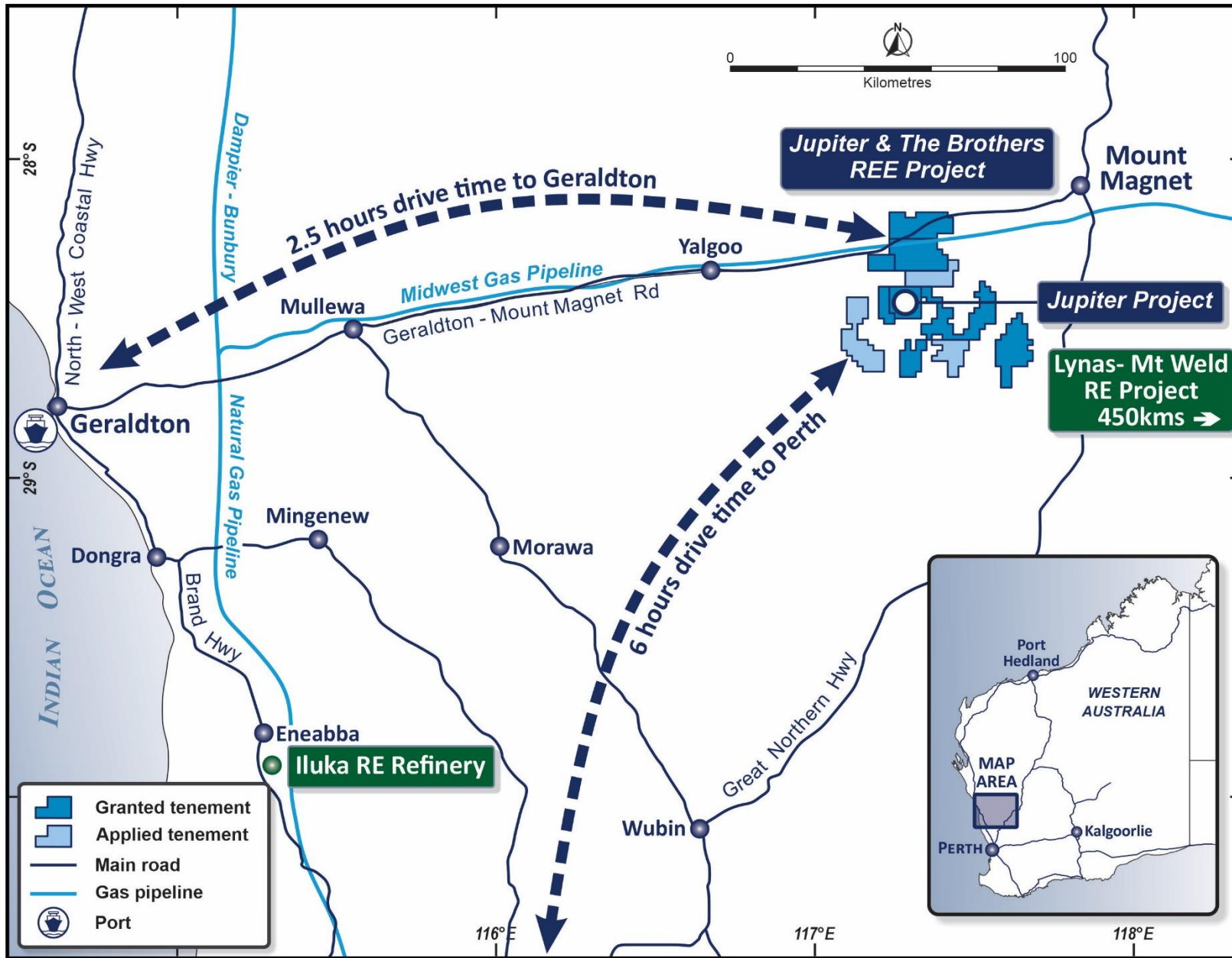
**DR. Natalee** Bonicci BSc Hon (Geology), PhD (Geometallurgy)  
Senior Exploration Geologist

Natalee is a Geologist and Geometallurgist with over 15 years of experience in mineral exploration and geometallurgy. Her PhD was completed in 2012 as part of the AMIRA P843 project focusing on improving and predicting metallurgical performance through mineralogy and textural relationships. Natalee was most recently with Northern Star for 7 years as a Senior Exploration Geologist for their Carbine project in Kalgoorlie, developing and delivering resources for the Paradigm, Phantom, Anthill and Carbine deposits prior to the sale of the project. Prior to that, Natalee worked as an Exploration Geologist and Geometallurgist for Independence Group at the Jaguar project where she was part of the discovery team of the Triumph VHMS deposit. Natalee has been with Venture minerals since March as a Senior Exploration Geologist.

# Strategically Focussed on this Huge Opportunity



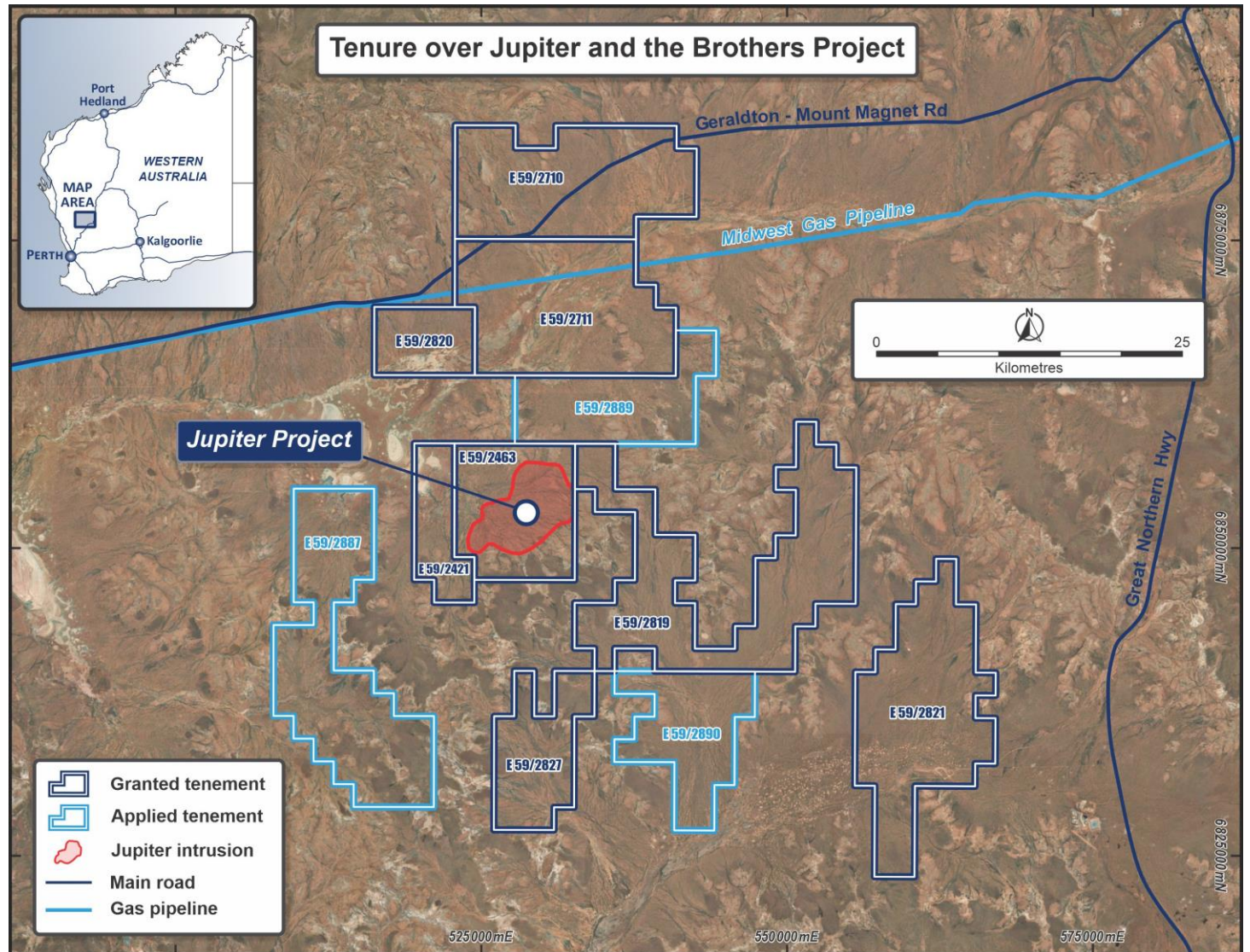
# Strategic Location with Impressive Infrastructure





# Ideal Operating Conditions

- Minimally stocked pastoral leases
- Subdued terrain with sparse vegetation
- Easy access via numerous station tracks from sealed Geraldton – Mt Magnet road (Great Northern Highway)
- Standard heritage assessments will be undertaken
- Accessible all year round

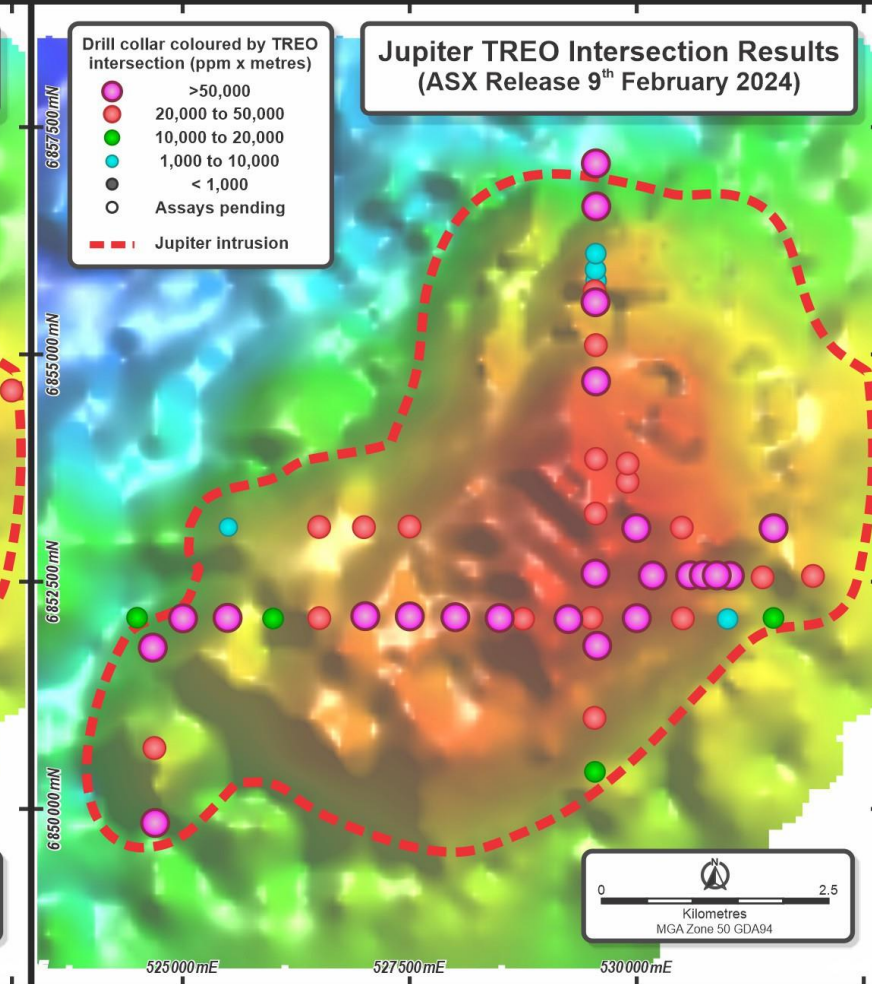
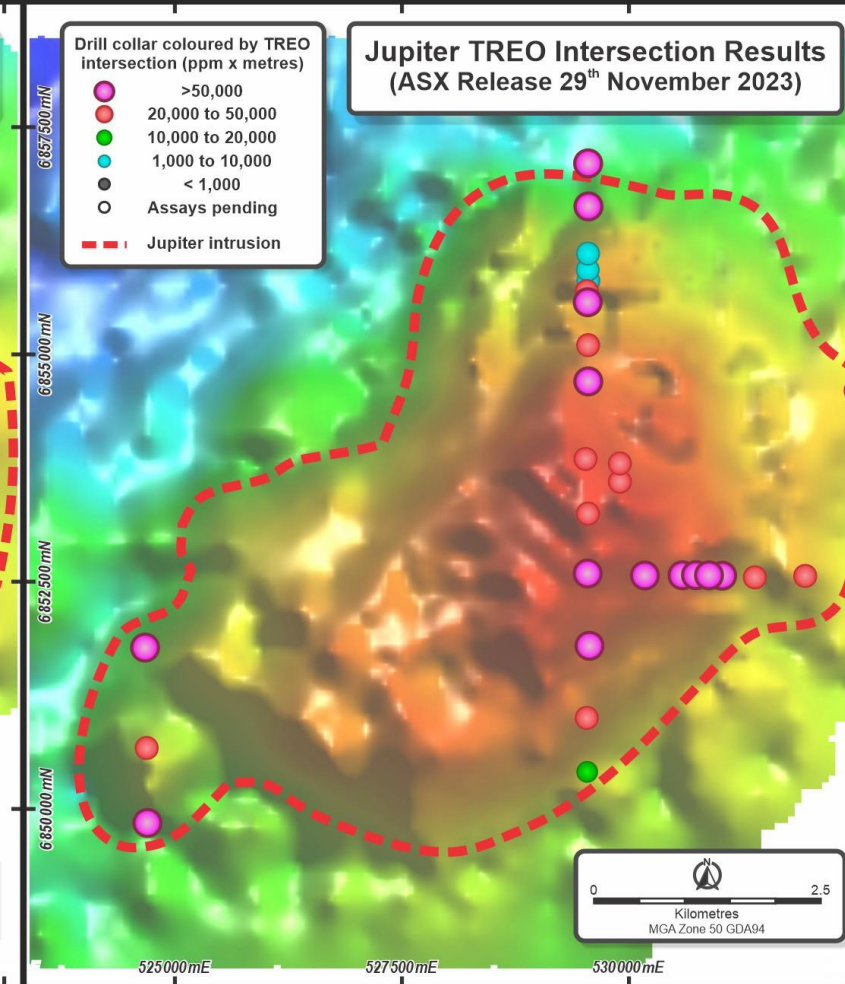
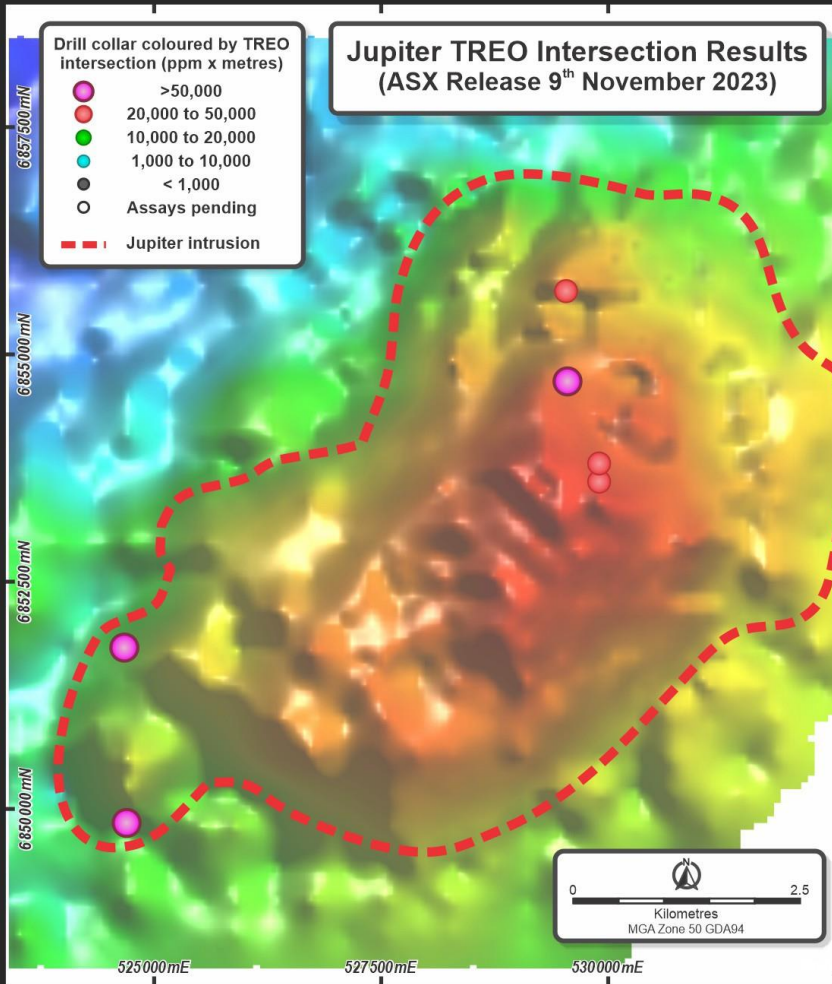






# Jupiter





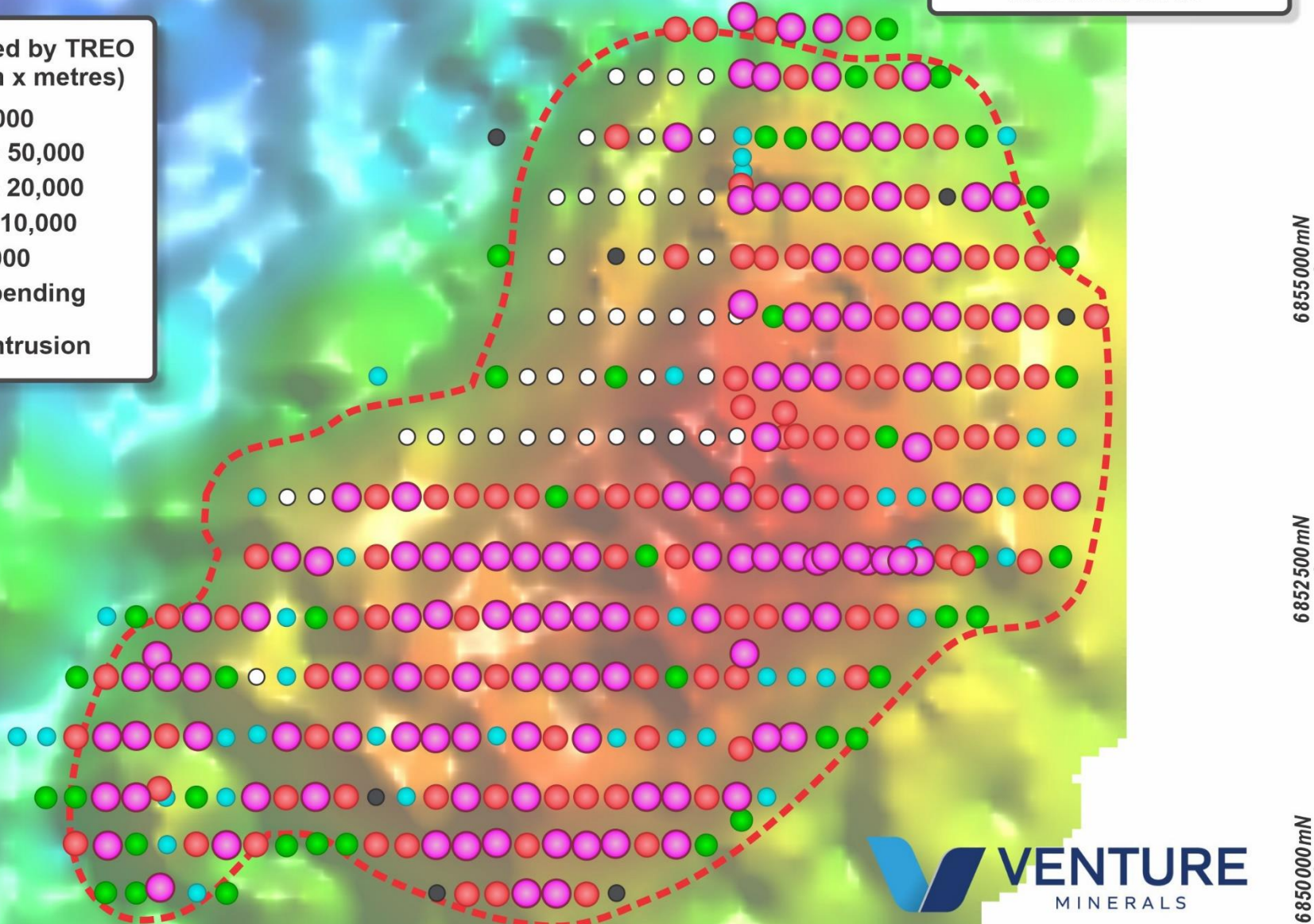


# Jupiter TREO Intersection Results to BRAC271



Drill collar coloured by TREO intersection (ppm x metres)

- >50,000
- 20,000 to 50,000
- 10,000 to 20,000
- 1,000 to 10,000
- < 1,000
- Assays pending
- - - Jupiter intrusion



Remarkable  
Continuity,  
with  
Consistently  
High Grade  
over  
40km<sup>2</sup>

522500mE

525000mE

527500mE

530000mE

532500mE

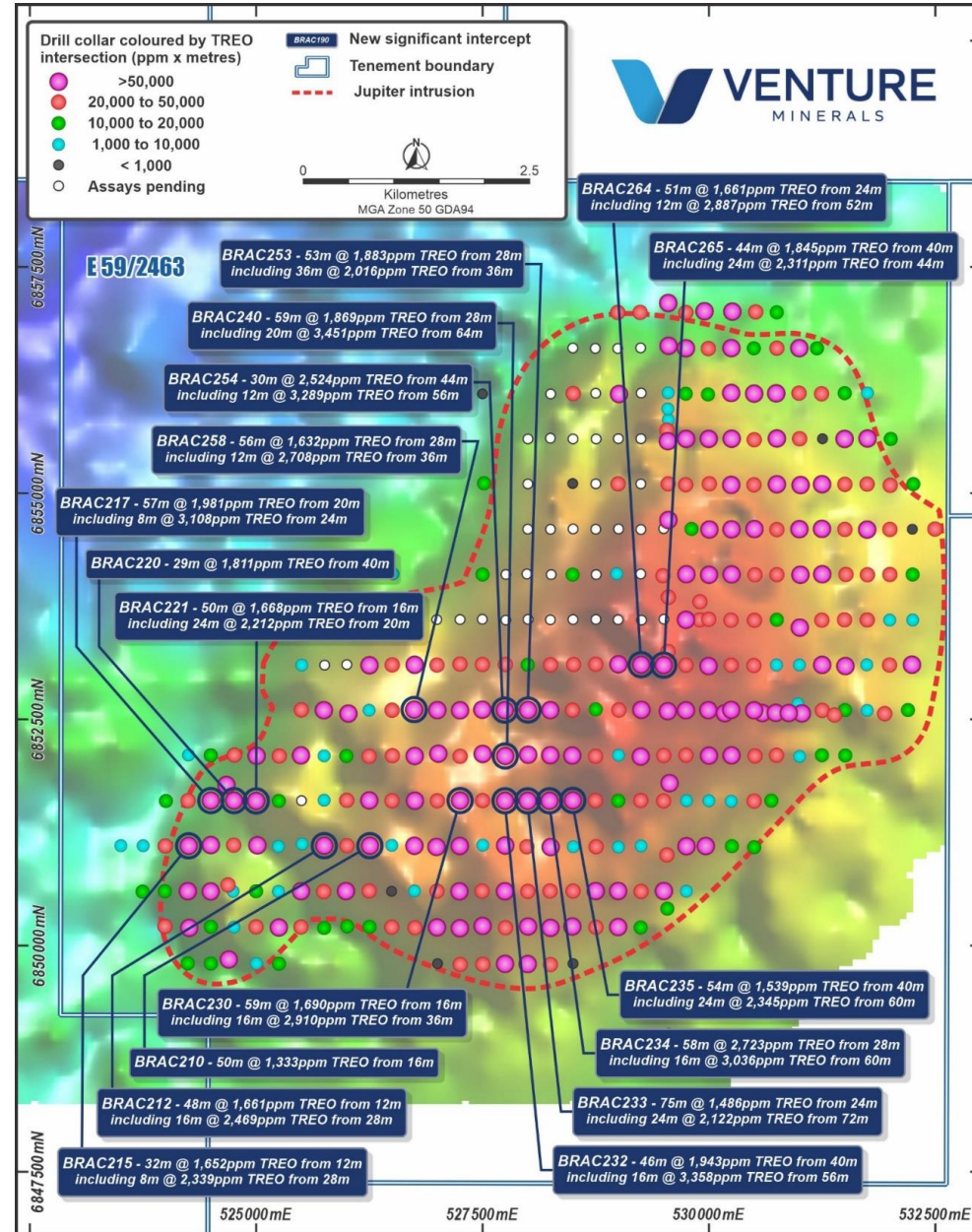
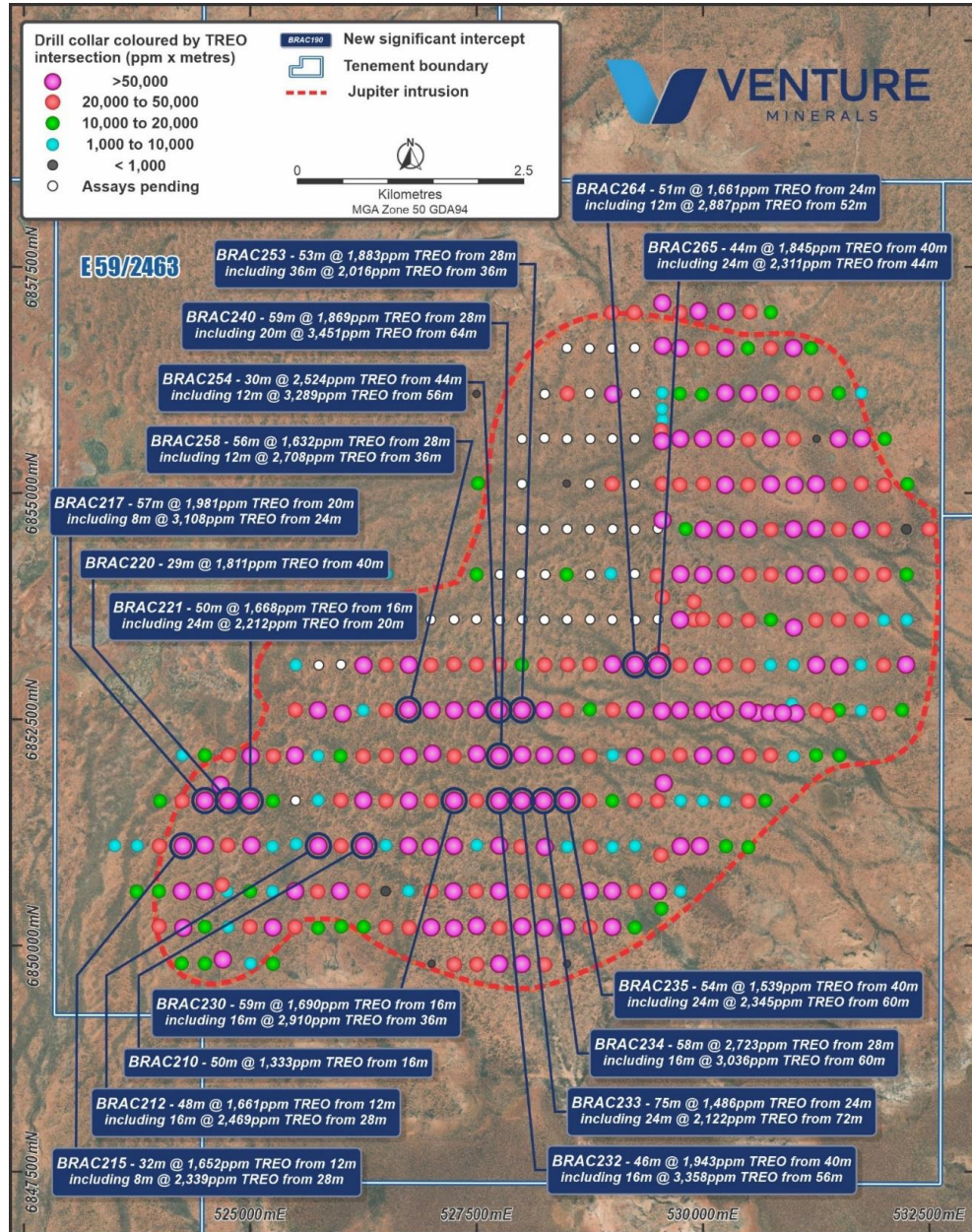
6855000mN

6852500mN

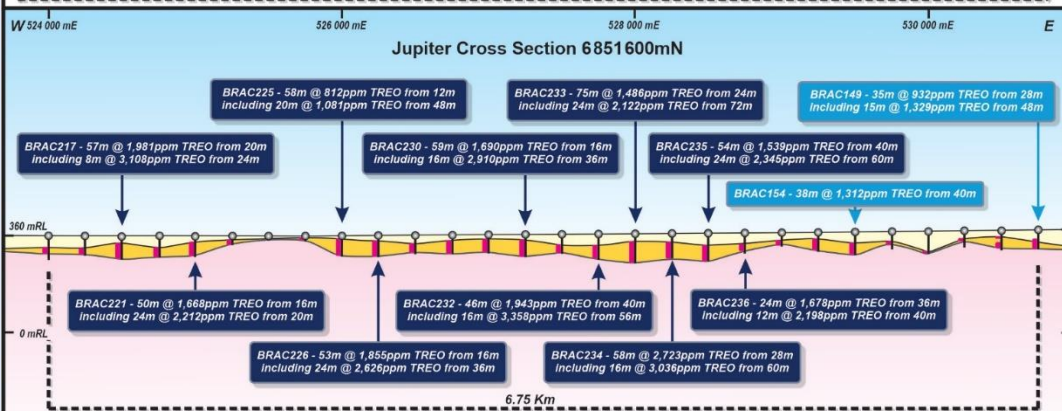
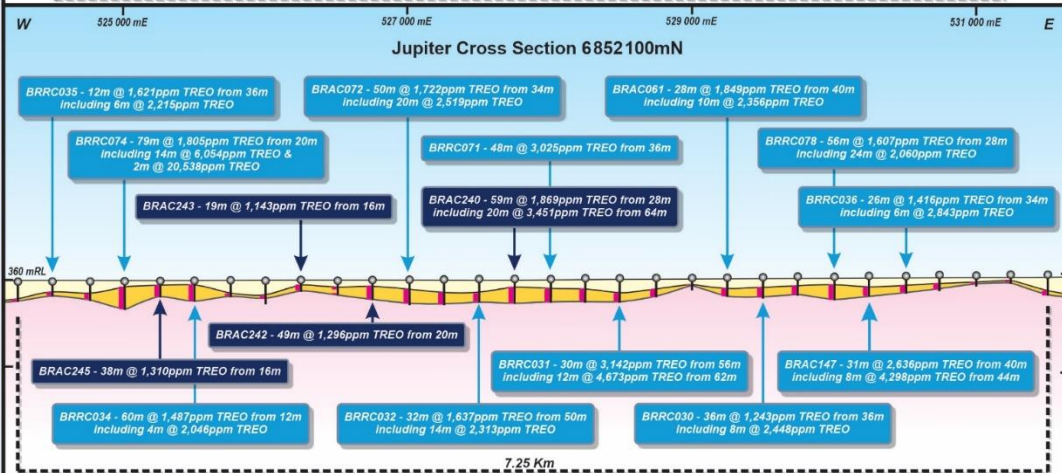
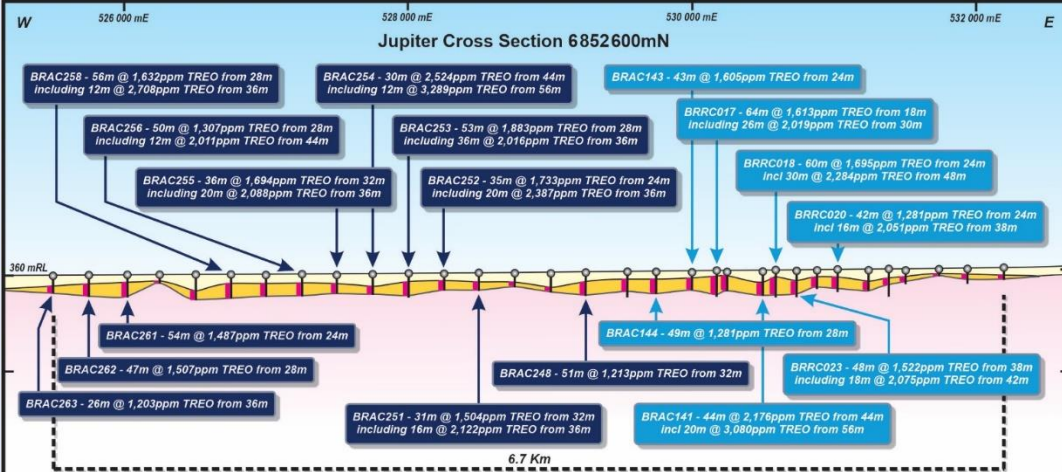
6850000mN











■ BRR0154 New significant intercept  
■ BRR0247 Previously reported significant intercept  
 Scaling - 2x vertical exaggeration

Alluvium / colluvium  
 REE Clay Zone  
 Jupiter Alkaline Intrusion



# High-Grade Continuity over 7km wide Cross Sections



- All the hallmarks of being Australia's biggest clay hosted rare earth discovery
- Typical drill intersection grade is two to three times that of the south China deposits (China ave grade approx 800ppm)
- Access to infrastructure is second to none
- Tier 1 jurisdiction is a major geopolitical advantage

- Awaiting final 10% of assay data
- Finalise mapping of Rare Earth mineralisation in 3D over entire 40km<sup>2</sup>
- Commence multi-staged, detailed metallurgical programs
- Prepare data for Maiden Resource Estimate



*the **PEOPLE***  
*the **PROJECT***  
*the **PRICE** cycle at a low*