



EMU

INVESTOR PRESENTATION Fiery Creek Georgetown

PRECIOUS AND BASE METALS EXPLORER

Forward Looking Statements



This presentation has been prepared by EMU NL. This document contains background information about EMU NL current at the date of this presentation. The presentation is in summary form and does not purport be all inclusive or complete. Recipients should conduct their own investigations and perform their own analysis in order to satisfy themselves as to the accuracy and completeness of the information, statements and opinions contained in this presentation.

This presentation is for information purposes only. Neither this presentation nor the information contained in it constitutes an offer, invitation, solicitation or recommendation in relation to the purchase or sale of shares in any jurisdiction.

This presentation may not be distributed in any jurisdiction except in accordance with the legal requirements applicable in such jurisdiction. Recipients should inform themselves of the restrictions that apply in their own jurisdiction. A failure to do so may result in a violation of securities laws in such jurisdiction.

This presentation does not constitute investment advice and has been prepared without taking into account the recipient's investment objectives, financial circumstances or particular needs and the opinions and recommendations in this presentation are not intended to represent recommendations of particular investments to particular persons. Recipients should seek professional advice when deciding if an investment is appropriate. All securities transactions involve risks, which include (among others) the risk of adverse or unanticipated market, financial or political developments.

To the fullest extent permitted by law, EMU NL, its officers, employees, agents and advisers do not make any representation or warranty, express or implied, as to the currency, accuracy, reliability or completeness of any information, statements, opinions, estimates, forecasts or other representations contained in this presentation. No responsibility for any errors or omissions from this presentation arising out of negligence or otherwise is accepted.

This presentation may include forward-looking statements. Forward-looking statements are only predictions and are subject to risks, uncertainties and assumptions which are outside the control of EMU NL. Actual values, results or events may be materially different to those expressed or implied in this presentation. Given these uncertainties, recipients are cautioned not to place reliance on forward looking statements. Any forward-looking statements in this presentation speak only at the date of issue of this presentation. Subject to any continuing obligations under applicable law and the ASX Listing Rules, EMU NL does not undertake any obligation to update or revise any information or any of the forward-looking statements in this presentation or any changes in events, conditions or circumstances on which any such forward looking statement is based.

Competent Person's Report



Competent Person Disclosure

The information in this disclosure relates to the exploration activities undertaken by EMU NL conducted over its exploration tenements in Australia. All information in this presentation has previously been recorded in the public domain.

EMU NL is not aware of any new information or data that materially affects the information included in the original market announcements.

The information in this presentation is based on, and fairly represents information and supporting documentation compiled by Mr Nigel Maund, a Competent Person who is consulting economic geologist to EMU NL. Mr Maund is a Fellow of the Australian Institute of Geoscientists, a Fellow of the Australian Institute of Mining and Metallurgy and has sufficient experience in the activities in which he undertakes to qualify as a Competent Person as defined in the 2012 edition of the "Australasian Code for Reporting of Exploration Results, Mineral Resources and Ore Reserves". Mr Maund consents to the inclusion herein of the matters based upon his information in the form and context in which it appears, and the Company confirms the form and context in which the Competent Persons findings are presented, have not been materially modified from the relevant original market announcements.

Authorisation

This presentation has been authorized for release by Chief Executive Officer

Georgetown Project



EMU

FIERY CREEK COPPER PROSPECT

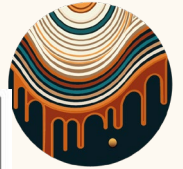
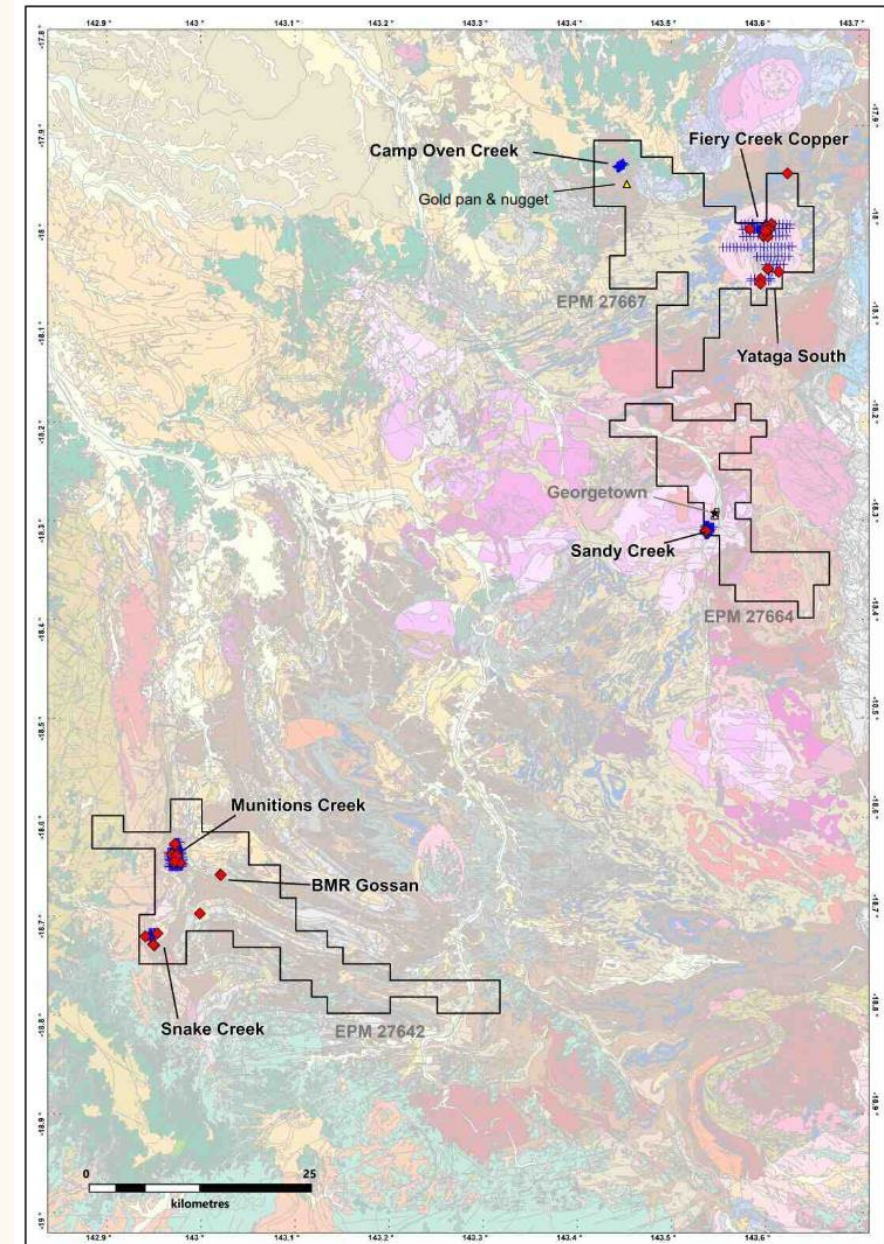
- Georgetown Project Queensland
- Fiery Creek Copper Prospect
- 29 square kilometre Yataga Granitoid Intrusive Complex
- Identified as potential massive scale constrained copper porphyry system
- Targeting millions of tonnes of contained copper in “pencil porphyry style” Cadia type system



Georgetown Project

SUBSTANTIAL SCALE MINERAL ENDOWMENT

- 1,000 mines, prospects, mineral occurrences in Georgetown District
- 3 exploration permits covering 850km²
- Significant historical gold production, very little systematic modern exploration
- Gold, lithium, silver, lead, zinc, copper, tin, tantalum, niobium, uranium, fluorine and molybdenite
- 8 potential scale prospects gold, copper, silver lead identified to date



EMU

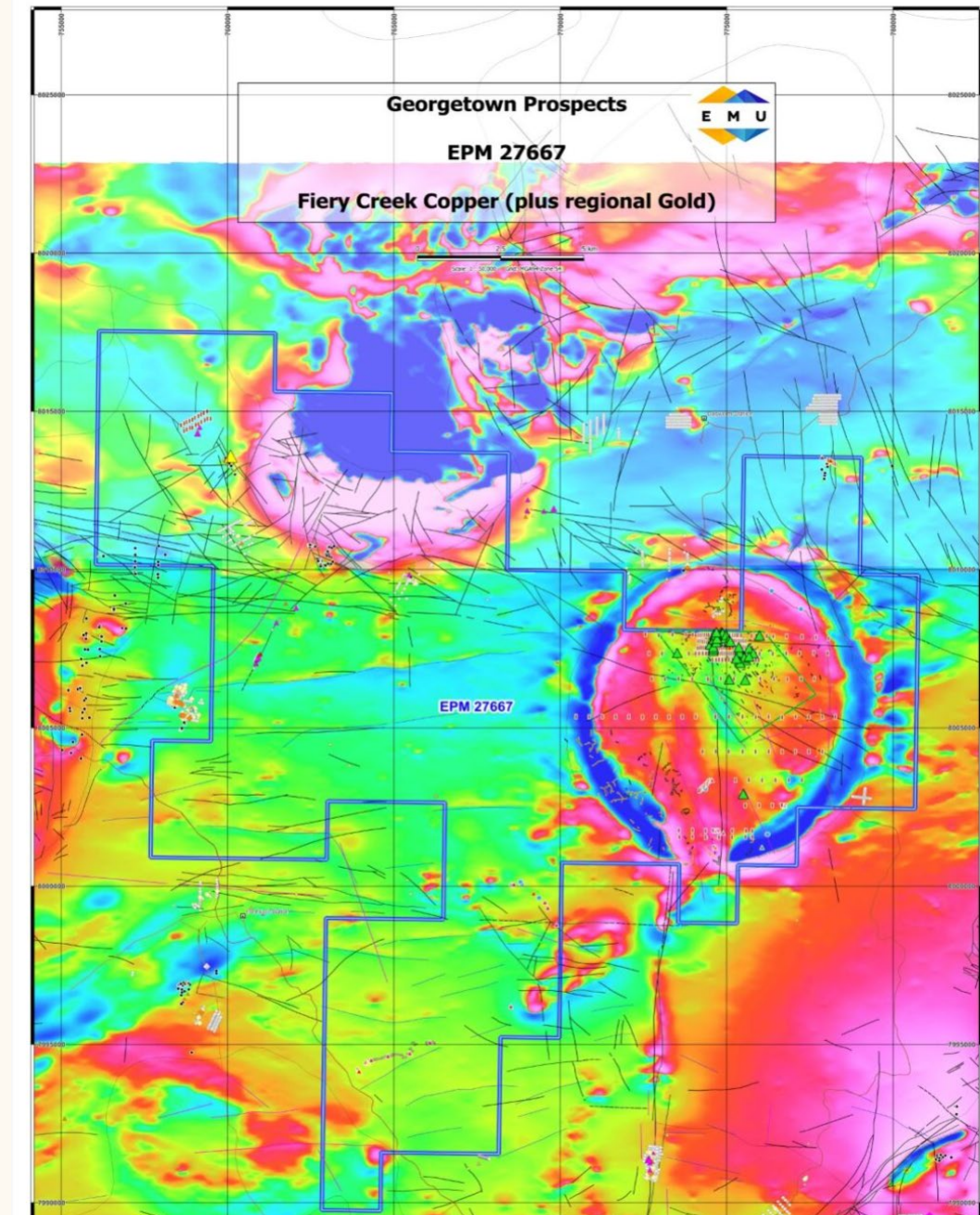
Georgetown Project

FIERY CREEK COPPER PROSPECT

- 23% copper, 14 ounces silver (460 g/t)* from rock samples in quartz breccia hosted veins at Fiery Creek
- Hosted within the massive Yataga Igneous Complex
- 1600m x 750m outcropping copper veining up to 2m wide
- Pervasive copper mineralisation in veins, stockwork and disseminated in soils supported by pXRF survey**
- Interpreted shallow constrained, scale porphyry copper system
- Veining has extensive secondary copper mineralisation at surface
- Multi element assays point to possibility of a significant copper polymetallic system
- Pathfinder element anomalism widespread

*ASX Release "Copper Silver Lead Assay Results Pegmatite Fields Georgetown" 5 October 2023

** ASX Release "Significant and Pervasive Copper Mineralisation Fiery Creek" June 2024

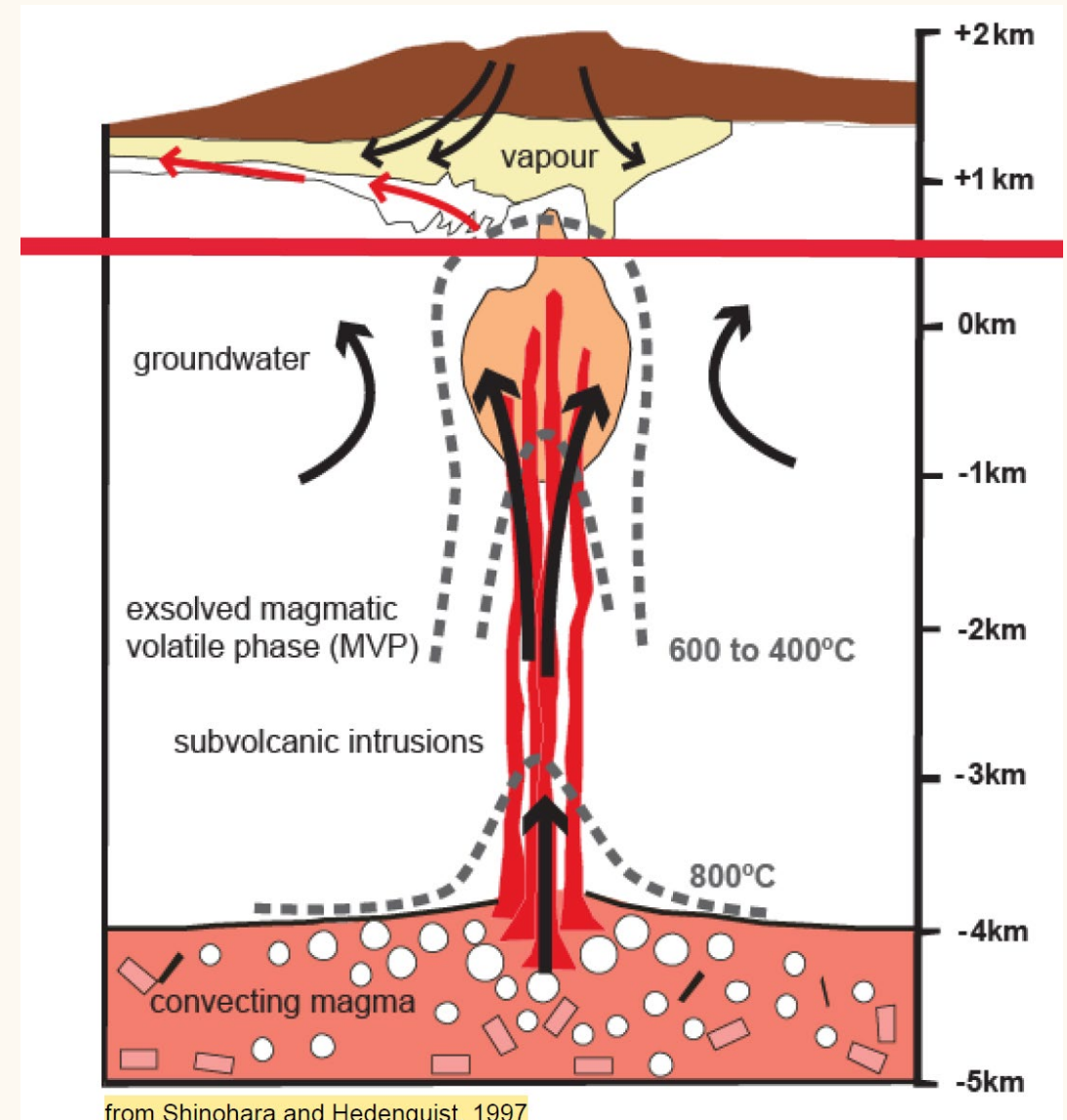


Georgetown Project



FIERY CREEK COPPER PROSPECT

- Granodiorite, a massive, brittle and largely unreactive host
- Constrained system - unvented
- System likely comprises a high-grade copper porphyry system
- High grade, polymetallic, copper dominated quartz veins have infilled late brittle fractures
- Hydrothermal “leakage structures” developed with the roof of the potential subjacent porphyry copper system
- The geometry is suggested to be “dyke like pencil, porphyry systems”, similar to those of the Lachlan Fold Belt of NSW.
- Vein system is likely to be within the deep phyllic alteration zone developed 200 m ± above the porphyry copper – potassic main ore system

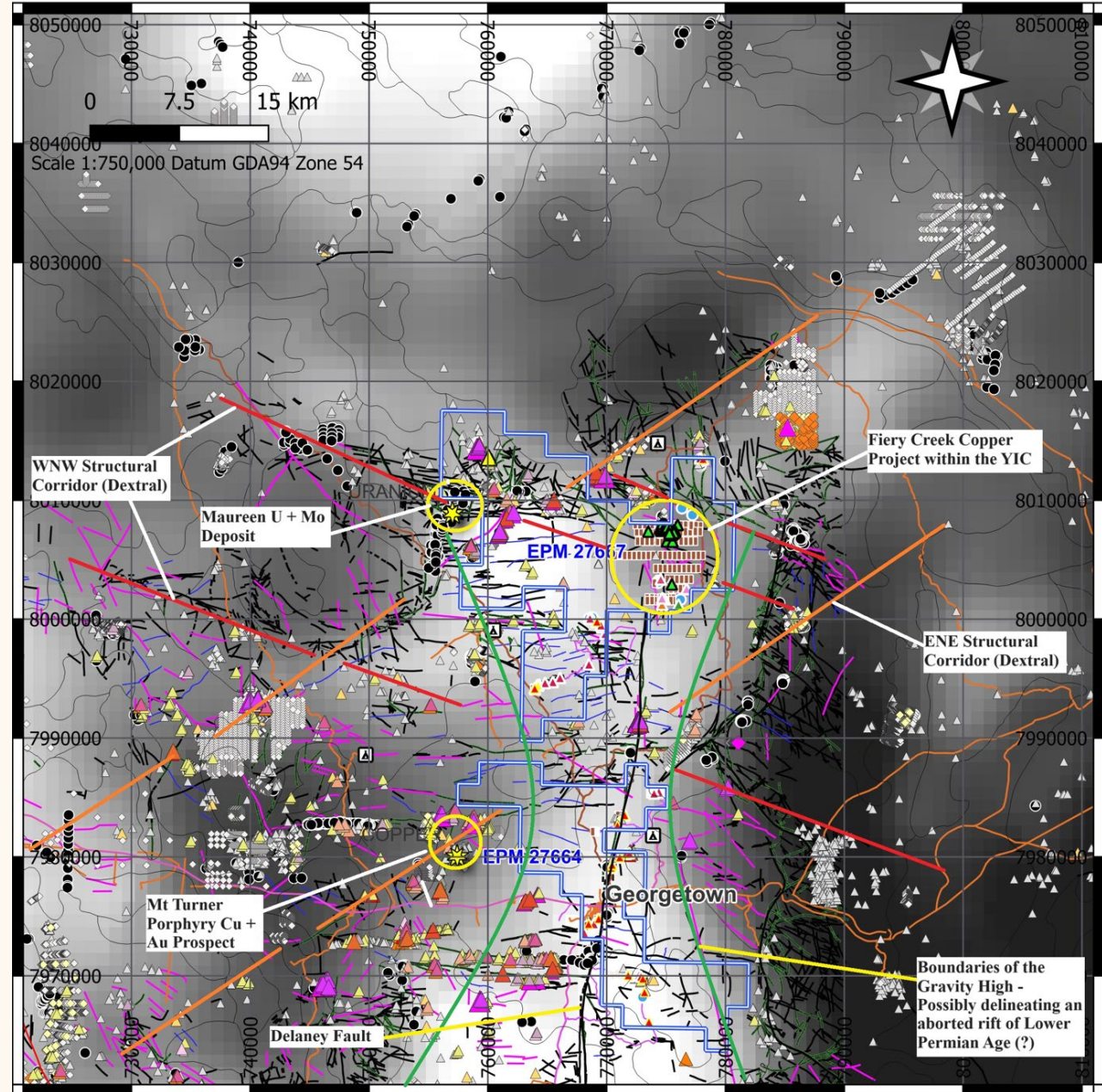


from Shinohara and Hedenquist, 1997

Georgetown Project

FIERY CREEK COPPER PROSPECT

- Structural setting
- Mineralised corridors
- Gravity anomalism
- Delaney Fault dominant gold structural feature
- Possible aborted arc rift setting

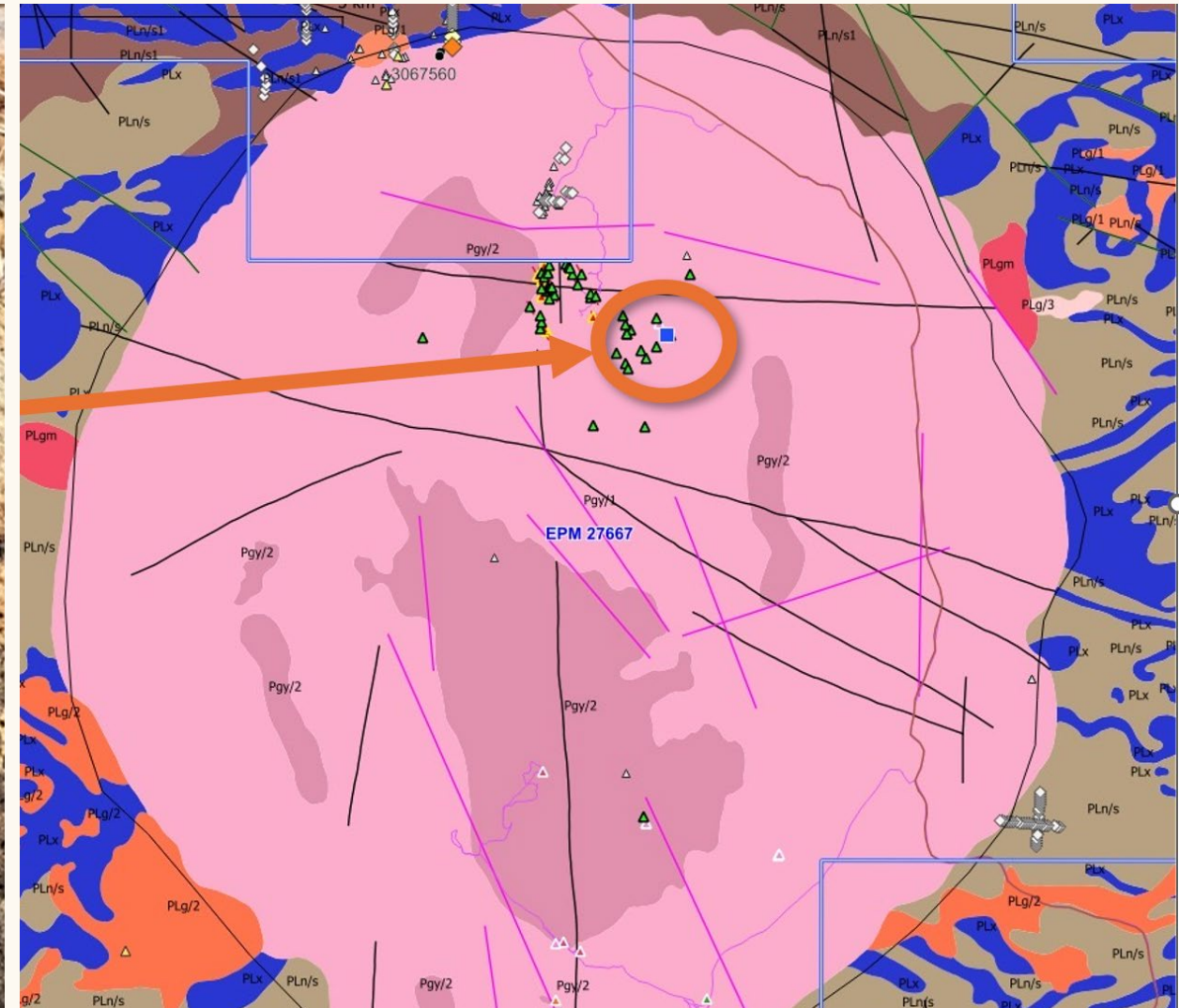


EMU

Fiery Creek Argillic Alteration



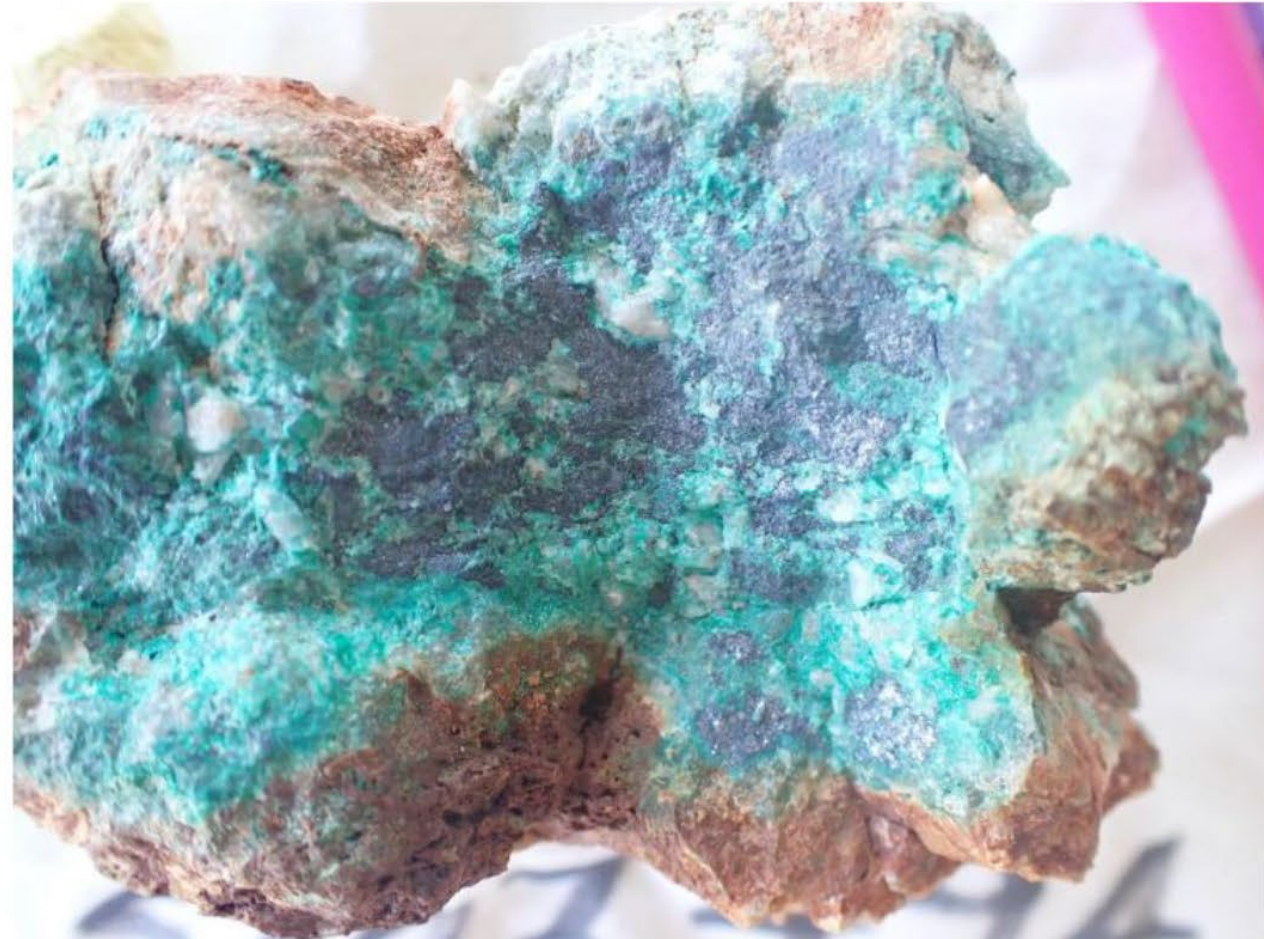
EMU



Fiery Creek Vein Samples



Sample ESSO2045 - A white, frosty to glassy quartz vein hosting abundant drusy cavities lined with euhedral prismatic quartz crystals encrusted with supergene malachite and chrysocolla developed over sooty tenorite (Coordinates Location 774873E 8007987N)

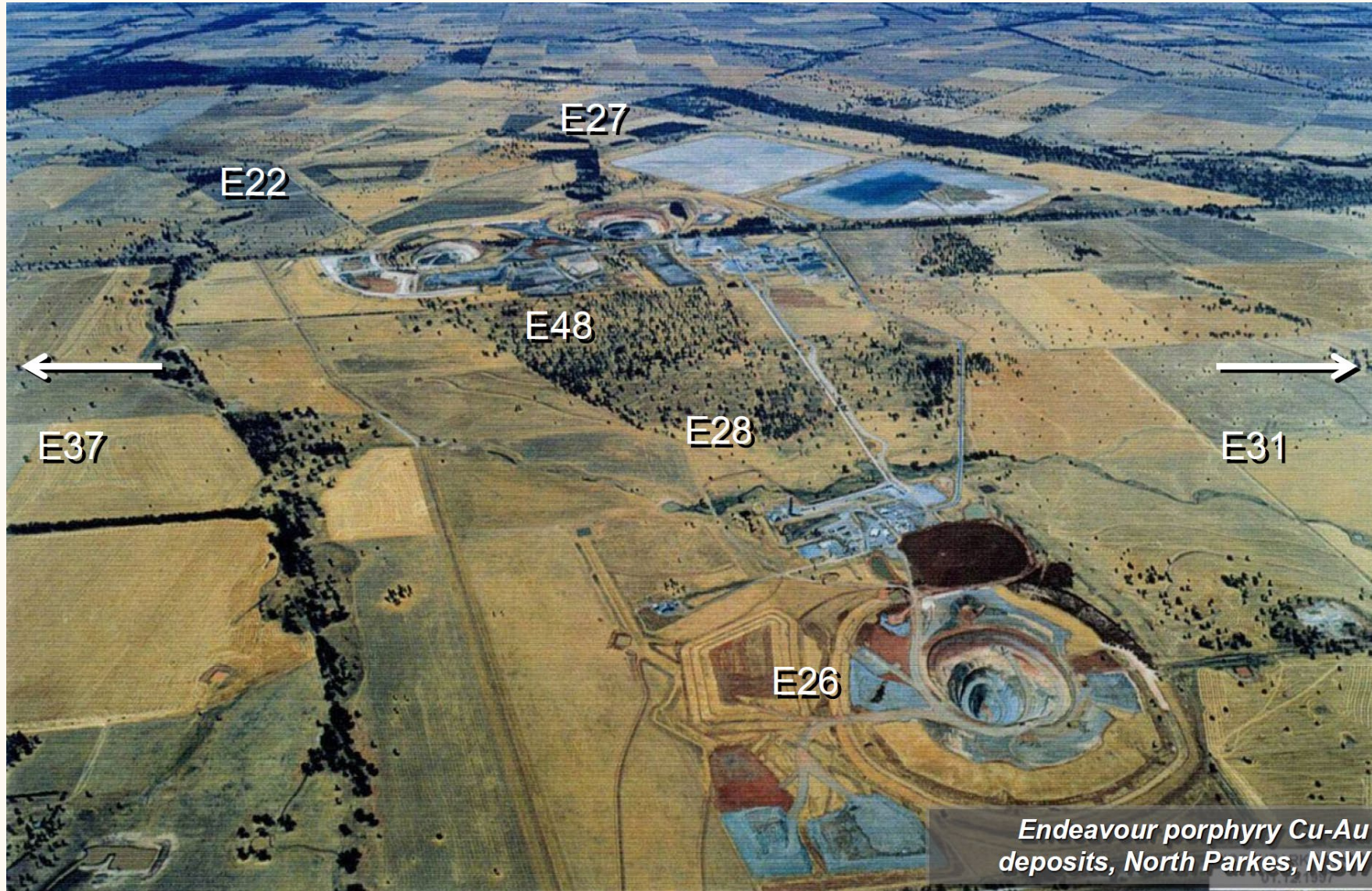


Sample ESSO2494 – (460ppm Ag, 1.25% Ba, 23.51% Cu, 14ppm In). White frosty quartz vein invaded by a later massive sulphide event as a mix of black tenorite (CuO) and sooty to dark grey chalcocite (Cu_2S) replaced at its margins by crystalline fibrous malachite and minor chrysocolla (Coordinates Location 773511E 8007365N).

Georgetown Project



EMU



Endeavour porphyry Cu-Au deposits, North Parkes, NSW

Georgetown Project



EMU



Georgetown Project

MT TURNER

- Identified Cu Mo porphyry 15km from Fiery Creek
- Last explored in the 1970's
- 6km diameter mineralised system
- Multiple phases of dykes, stocks, and breccia
- Unconstrained system - core hosts a hydrothermal and collapsed breccia intruded by dykes.
- Volcanics suggest depth of erosion being considerably less than Fiery Creek
- Huonfels and Phyllis May Porphyry systems nearby



EMU

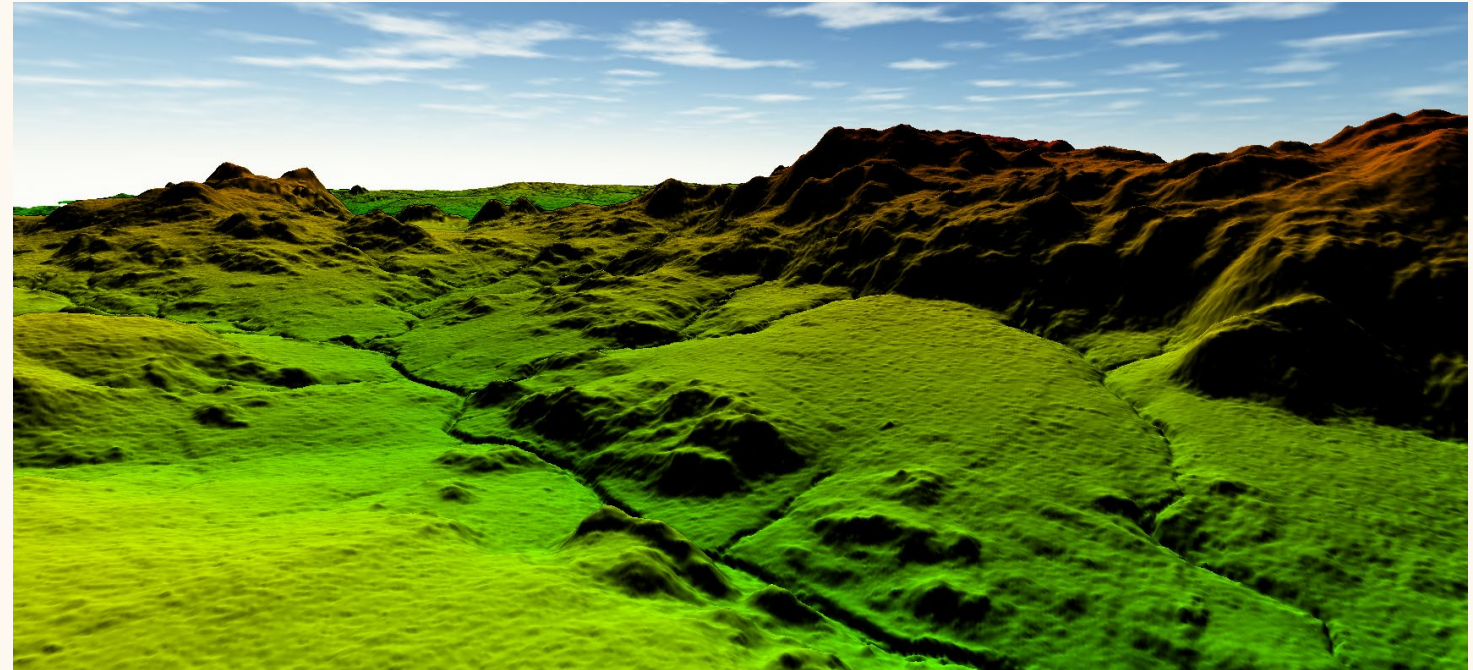


Georgetown Project



CURRENT WORK PROGRAMME

- Drone LiDAR and Photogrammetry programme flown in during May 2024 – interpretive results under review
- Traditional and pXRF geochemistry surveys completed over discovery zone and broader Yataga Igneous Complex with new survey programme scheduled in July
- Geological mapping surveys continue in field
- 21-line km geophysics survey pole dipole IP, resistivity, MT scheduled in August
- 200-line km AEM to be flown July- October
- Planning for drilling programme to follow results from geochemistry and geophysics surveys



Drone LiDAR Image - Yataga Igneous Complex Looking North (June 2024)

Georgetown Project

SIGNIFICANT HISTORIC GOLD PROSPECTIVITY

- Camp Oven Creek rock assay results ranging from 12.9 up to 224 g/t gold and 24 to 135 g/t silver
- 15.4 g/t gold assay rock samples at Dagworth prospect
- 15 rock samples assays greater than 31.1 g/t gold (> 1 Ounce) Camp Oven Creek prospect area
- 3 rock samples in the Quartz 130 prospect with values ranging from 51 g/t gold to 73 g/t gold.
- Drill intersects at Turtle Arm returned assays of 2m at 15.8g/t Au and 3m at 2.8g/t Au.
- 86 historic rock samples greater than 1 g/t gold with a weighted average of 17.3 g/t within Georgetown - Camp Oven Creek prospect area
- Rock samples from EMU field work returned 36.1 g/t gold and 25.6 g/t gold from Sandy Creek prospect just south of Georgetown
- Historic drilling at Munitions Creek returned assays 4m at 2.73/t Au and 1m at 10.85g/t Au.



EMU

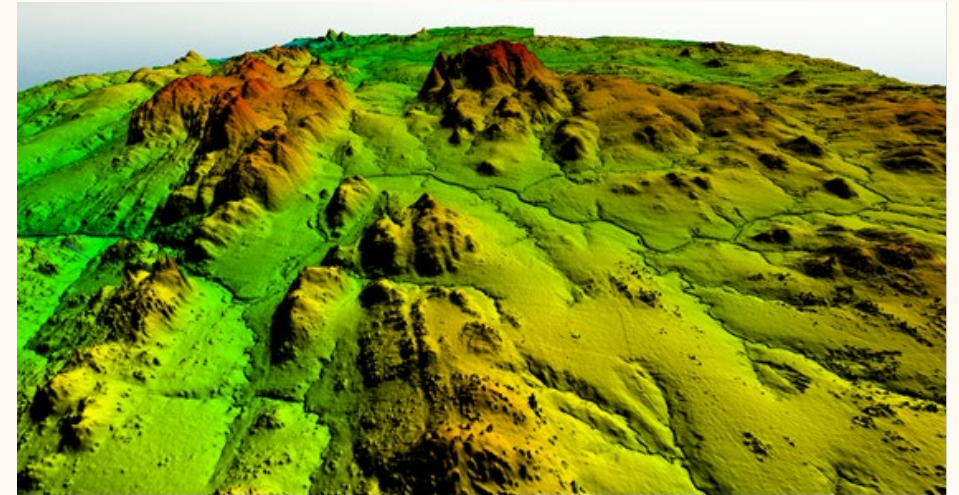
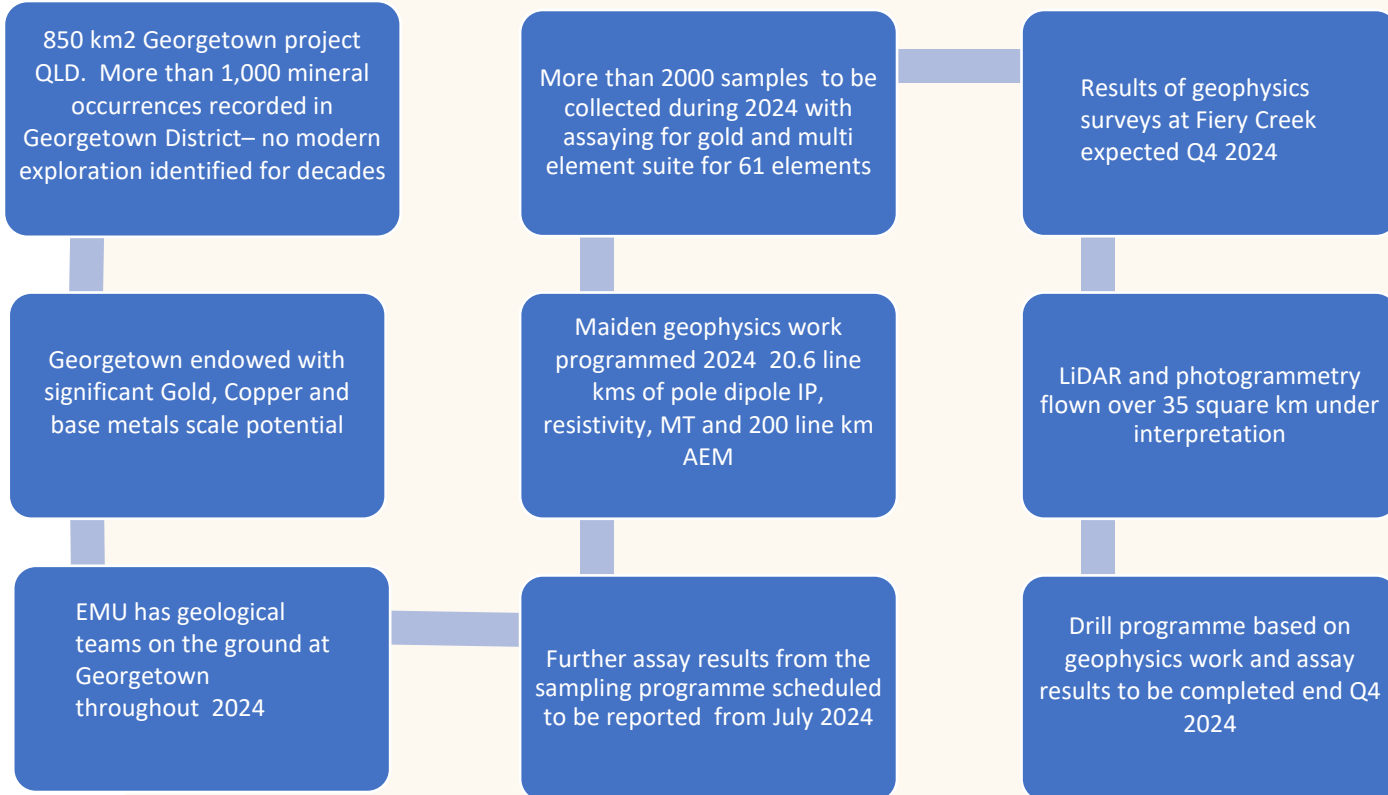
Why Georgetown?

- Fiery Creek Copper system potentially emerging as a significant Australian porphyry discovery
- Substantial gold mineralisation at multiple locations throughout Georgetown Project
- Strong newsflow expected from remaining 2024 field work
- Extensive base metals and precious mineral endowment at Georgetown with the potential to deliver a number of scale economic possibilities



EMU

Activities and Newsflow



Drone LiDAR Yataga Igneous Complex Looking North (June 2024)



EMU

Contact Us

DOUG GREWAR CEO
doug@emunl.com.au

EMU NL
10 Walker Avenue
West Perth WA 6005

+61 (0)419 833604
www.emunl.com.au
Investorhub.emunl.com.au



EMU Investor Hub Signup

info@emunl.com.au

ABN 50 127 291 927

ASX:EMU
ASX:EMUCA