

SOIL SAMPLING COMPLETED AT PINDERI HILLS PROJECT

HIGHLIGHTS:

- Over 1,000 samples collected at Pinderi Hills Project
- Photogrammetry completed over north-east portion of Pinderi Hills project
- Samples delivered to laboratory for assaying with result anticipated in July 2024

Errawarra Resources Ltd (ASX:ERW) (Errawarra or the Company) is pleased to advise that the reconnaissance soil, stream sediment and rock chip sampling program at the Pinderi Hills project has been completed as part of its Stage 1 earn-in rights under the joint venture (**JV**) agreement with Alien Metals (AIM:UFO).

The data gathered from the fieldwork will provide valuable information in analysing and identifying prospective areas and potential drill targets for lithium at Pinderi Hills.

The key focuses of the initial work program included:

- › Reconnaissance soil (400m x 100m grid), stream sediment and rock chip sampling comprising of 1,017 samples which are now completed;
- › Photogrammetry completed over the north-east portion of E47/4422;
- › A historical drone survey is being reprocessed to assist in the targeting of pegmatites;
- › Completing surface mapping and sampling of pegmatites.

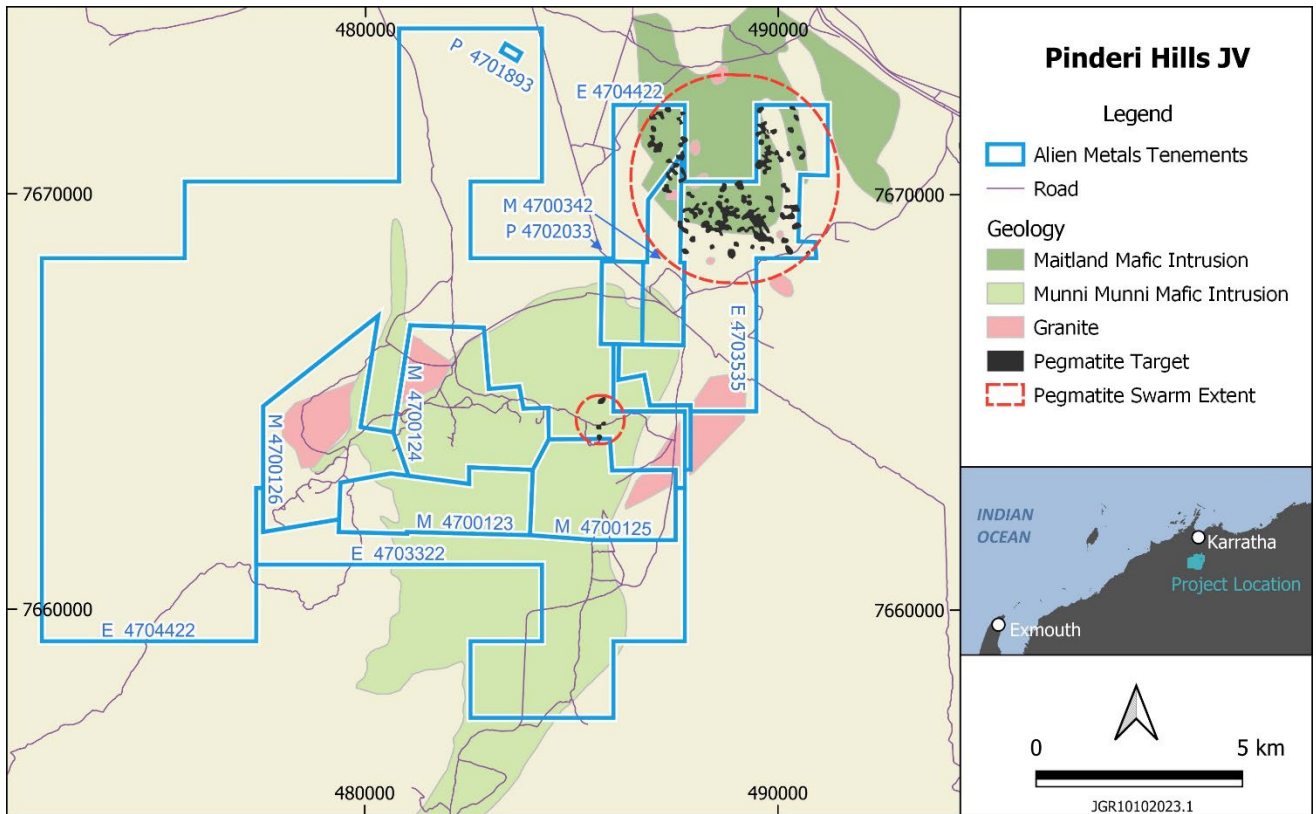


Figure 1. Pinderi Hills Joint Venture Tenements.

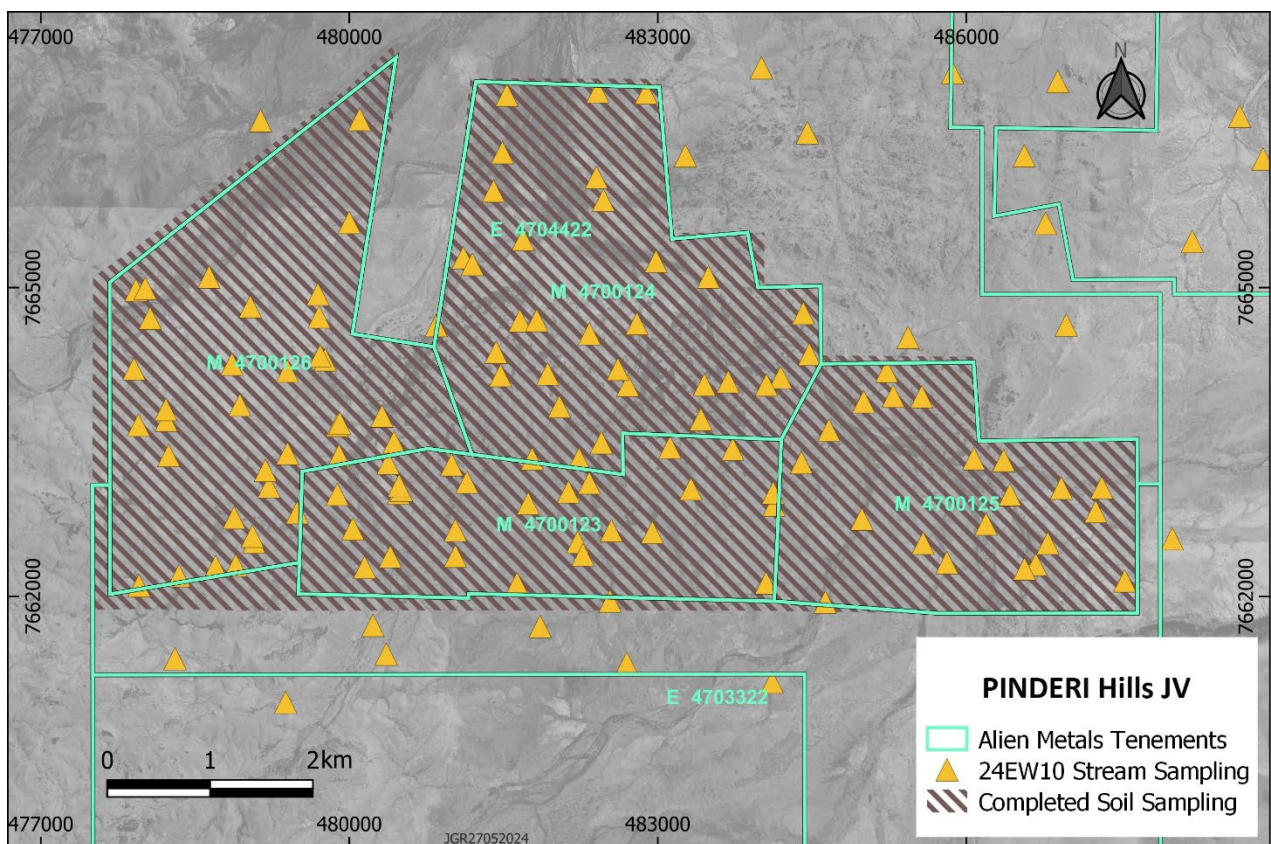


Figure 2. Sampling Program plan.

Next Steps

All samples have been dispatched to Australian Laboratory Services Perth for analysis with the full assay results anticipated to be available by the end of July 2024. After all sample results are received and interpreted, a follow-up program will be planned and is expected to be implemented during Q4 2024.

This ASX announcement has been authorised for release by Thomas Reddicliffe, Executive Chairman on behalf of the Board of Directors.

For further information, please contact:

Tom Reddicliffe
Executive Chairman
Errawarra Resources Ltd
E: info@errawarra.com

Competent Person Statement

Thomas Reddicliffe, BSc (Hons), MSc, a Director and Shareholder of the Company, is a Fellow of the AUSIMM, and has sufficient experience which is relevant to the style of mineralisation and type of deposit under consideration to qualify as a Competent Person as defined in the 2012 edition of the 'Australasian Code for Reporting of Exploration Results, Mineral Resources and Ore Reserves'. Thomas Reddicliffe consents to the inclusion in the report of the information in the form and context in which it appears.

About Errawarra Resources

Errawarra Resources (ASX:ERW) is a battery metal focused resources company with projects in Western Australia, including the Andover West Lithium Prospect located in the highly prospective Pilbara region and the Errabiddy gold/graphite/REE/lithium project located in the Gascoyne region.

For more information, please visit www.errawarra.com.

Information in this release relating to previous ASX disclosures

> Errawarra Resources Ltd dated 29 April 2024.