



KORAB RESOURCES LIMITED

KORAB HOUSE

www.korab.com.au

Issued Capital

Issued Shares: 367 Mln

Last Price: 0.8 cents

Capitalisation: \$3 Mln

Listing Code

ASX: KOR

Directors

Andrej K. Karpinski

Executive Chairman
Executive Director

Anthony G. Wills

Non-executive Director
(Independent)

Alicja Karpinski

Non-executive Director

Projects

Rum Jungle

(Pine Creek, NT)

Magnesium, Gold, Silver, Tin
Zinc, Lead, Nickel, Copper,
Cobalt, Rare Earth Oxides,
Scandium, Lithium, Iron Ore
Manganese, Uranium
Phosphate

Mt. Elephant

(Ashburton, WA)

Gold, Copper

Bobrikovo

(Luhansk, UKRAINE)

Gold, Silver, Zinc, Lead,
Antimony

26 June 2024

HELICOPTER-ASSISTED INFILL GROUND GRAVITY SURVEY OF THE RUM JUNGLE PROJECT

Korab Resources Ltd ("Korab", or "Company") (ASX: KOR) and its subsidiaries ("Korab Group") are pleased to announce that a helicopter assisted infill ground gravity survey will be undertaken at Korab's Rum Jungle Project located in the Northern Territory during the coming quarter (quarter ending 30 September 2024).

The infill ground gravity survey will consist of 320 stations spaced between 250 m and 500 m and will cover the areas containing several silver, gold, zinc, lead, nickel, magnesium, and copper prospects and targets defined by Korab using data collected and evaluated over the past 7 years. For the map showing locations of the areas to be covered by the infill ground gravity survey draped over Digital Elevation Model (DEM) please refer to Figure 3.

This infill hi-resolution ground gravity survey will be undertaken in conjunction with the low-resolution ground gravity survey to be undertaken by the Northern Territory Geological Survey (NTGS) over the coming months, thus saving Korab the contractor mobilisation costs. The ground gravity survey data from both surveys will be complemented by the low-resolution historical aerial gravity data (see Figure 4) available from NTGS. Both helicopter-assisted ground gravity surveys will be run by WA based Atlas Geophysics.



Figure 1 Helicopter-assisted ground gravity survey station (Atlas Geophysics)

Results of both ground gravity surveys will be processed and analysed (including inversion modelling) with the view to defining in greater detail gravity anomalies which have the potential to host mineralised



20 PROWSE STREET, WEST PERTH, WA, 6005, AUSTRALIA
PO BOX 1958, WEST PERTH, WA, 6872, AUSTRALIA
TEL (08) 9474 6166 FAX (08) 9322 6333
ACN 082 140 252





KORAB RESOURCES LIMITED

KORAB HOUSE

www.korab.com.au

Issued Capital

Issued Shares: 367 Mln

Last Price: 0.8 cents

Capitalisation: \$3 Mln

Listing Code

ASX: KOR

Directors

Andrej K. Karpinski

Executive Chairman
Executive Director

Anthony G. Wills

Non-executive Director
(Independent)

Alicja Karpinski

Non-executive Director

Projects

**Rum Jungle
(Pine Creek, NT)**

Magnesium, Gold, Silver, Tin
Zinc, Lead, Nickel, Copper,
Cobalt, Rare Earth Oxides,
Scandium, Lithium, Iron Ore
Manganese, Uranium
Phosphate

**Mt. Elephant
(Ashburton, WA)**

Gold, Copper

**Bobrikovo
(Luhansk, UKRAINE)**

Gold, Silver, Zinc, Lead,
Antimony

zones and to improving understanding of the structural controls within the Rum Jungle Project. Results of the analysis will be reported to the market once they are received and evaluated by the Company.

Rum Jungle Project covers approximately 243 square kilometres and is located near the town of Batchelor in the Northern Territory, some 70km south of Darwin (see Figure 2). Rum Jungle Project is located within the Rum Jungle Mineral Field, which forms part of the Pine Creek Orogen. Map showing geology of the Rum Jungle Project and various structural features draped over digital elevation model is shown in Figure 5.

END OF REPORT

This report has been authorised by Andrej K. Karpinski under the powers delegated by the Board.

INVESTOR RELATIONS CONTACT

Andrej K. Karpinski - Executive Chairman

Australia: (08) 9474 6166

International: +61 8 9474 6166

ABOUT KORAB RESOURCES

Korab Resources Ltd is an international mining and exploration company with operations in Australia and Europe. Korab's projects include Winchester Magnesium Deposit near Batchelor in the Northern Territory of Australia, Geolsec phosphate and rare earth elements deposit also near Batchelor, and projects in Australia and overseas where gold, silver, copper, cobalt, nickel, lithium, scandium, lead, zinc, tin, manganese, uranium and other elements have been discovered. More information about Korab's projects can be sourced from Korab's website at www.korab.com.au. Korab's shares are traded on Australian Securities Exchange (ASX).

DISCLAIMER AND CAUTIONARY STATEMENT

Forward-looking statements are statements that are not historical facts. Words such as "expect(s)", "expected", "feel(s)", "believe(s)", "will", "may", "anticipate(s)", "should", "envisage(s)" and similar expressions are intended to identify such forward-looking information. This information includes, but is not limited to statements regarding future exploration results, resources, or reserves, and production. Anyone reading this report is cautioned not to place undue reliance on these forward-looking statements. All of such statements are subject to risks and uncertainties (many of which are difficult to predict and which generally are beyond the control of the Company) that could cause actual results to differ materially from those expressed in, or implied or projected by, the forward-looking information and statements. These risks and uncertainties include, but are not limited to: those relating to the interpretation of exploration results (including drill results), the geology, grade and continuity of mineral deposits and conclusions of economic evaluations; risks relating to possible variations in reserves, grade, mining dilution, ore loss, and recovery rates; risks relating to changes in project financial and technical parameters; risks relating to the potential for delays in exploration programs, project evaluation/review, completion of feasibility studies and project development; risks related to commodity prices and foreign exchange rate fluctuations; risks related to failure to secure adequate financing on a timely basis and on acceptable terms; risks related to delays in obtaining governmental, or other permits and approvals; risks related to security of tenure; and other risks and uncertainties related to the Company's prospects, properties and business strategy. Any forward-looking information contained in this report is provided as of the date of this report. Except as required under applicable listing rules and securities laws, the Company does not intend, and does not assume any obligation, to update this forward-looking information.



20 PROWSE STREET, WEST PERTH, WA, 6005, AUSTRALIA
PO BOX 1958, WEST PERTH, WA, 6872, AUSTRALIA
TEL (08) 9474 6166 FAX (08) 9322 6333
ACN 082 140 252



PAGE 2



KORAB RESOURCES LIMITED

KORAB HOUSE

www.korab.com.au

Issued Capital

Issued Shares: 367 Mln

Last Price: 0.8 cents

Capitalisation: \$3 Mln

Listing Code

ASX: KOR

Directors

Andrej K. Karpinski

Executive Chairman

Executive Director

Anthony G. Wills

Non-executive Director

(Independent)

Alicja Karpinski

Non-executive Director

Projects

Rum Jungle

(Pine Creek, NT)

Magnesium, Gold, Silver, Tin
Zinc, Lead, Nickel, Copper,
Cobalt, Rare Earth Oxides,
Scandium, Lithium, Iron Ore
Manganese, Uranium
Phosphate

Mt. Elephant

(Ashburton, WA)

Gold, Copper

Bobrikovo

(Luhansk, UKRAINE)

Gold, Silver, Zinc, Lead,
Antimony



Figure 2 Rum Jungle Project Location



20 PROWSE STREET, WEST PERTH, WA, 6005, AUSTRALIA
PO BOX 1958, WEST PERTH, WA, 6872, AUSTRALIA
TEL (08) 9474 6166 FAX (08) 9322 6333
ACN 082 140 252





KORAB RESOURCES LIMITED

KORAB HOUSE

www.korab.com.au

Issued Capital

Issued Shares: 367 Mln

Last Price: 0.8 cents

Capitalisation: \$3 Mln

Listing Code

ASX: KOR

Directors

Andrej K. Karpinski

Executive Chairman

Executive Director

Anthony G. Wills

Non-executive Director

(Independent)

Alicja Karpinski

Non-executive Director

Projects

Rum Jungle

(Pine Creek, NT)

Magnesium, Gold, Silver, Tin
Zinc, Lead, Nickel, Copper,
Cobalt, Rare Earth Oxides,
Scandium, Lithium, Iron Ore
Manganese, Uranium
Phosphate

Mt. Elephant

(Ashburton, WA)

Gold, Copper

Bobrikovo

(Luhansk, UKRAINE)

Gold, Silver, Zinc, Lead,
Antimony

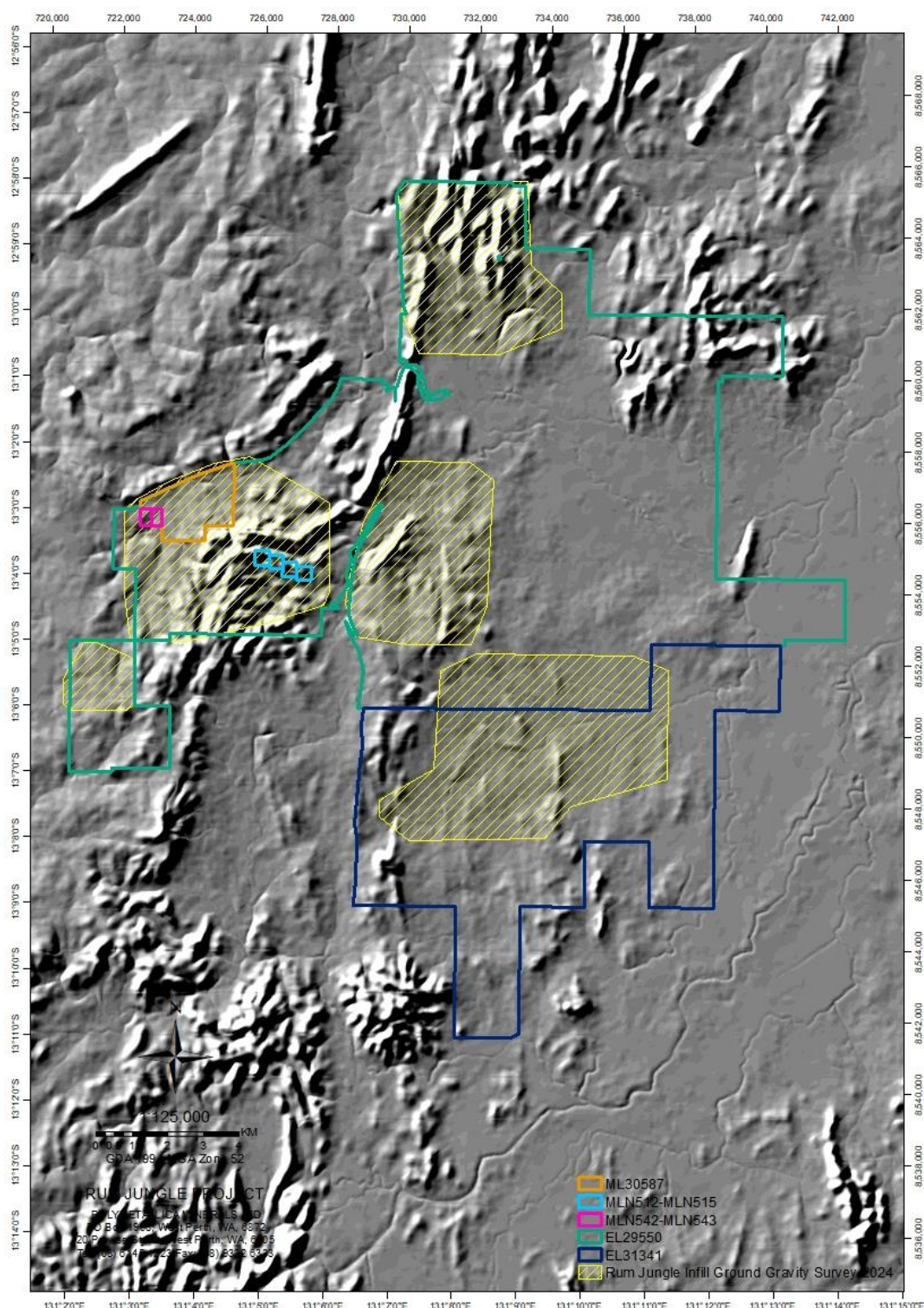


Figure 3 Rum Jungle Project Infill Ground Gravity Areas draped over Digital Elevation Model



20 PROWSE STREET, WEST PERTH, WA, 6005, AUSTRALIA
PO BOX 1958, WEST PERTH, WA, 6872, AUSTRALIA
TEL (08) 9474 6166 FAX (08) 9322 6333
ACN 082 140 252





KORAB RESOURCES LIMITED

KORAB HOUSE

www.korab.com.au

Issued Capital

Issued Shares: 367 Mln

Last Price: 0.8 cents

Capitalisation: \$3 Mln

Listing Code

ASX: KOR

Directors

Andrej K. Karpinski

Executive Chairman

Executive Director

Anthony G. Wills

Non-executive Director

(Independent)

Alicja Karpinski

Non-executive Director

Projects

Rum Jungle

(Pine Creek, NT)

Magnesium, Gold, Silver, Tin
Zinc, Lead, Nickel, Copper,
Cobalt, Rare Earth Oxides,
Scandium, Lithium, Iron Ore
Manganese, Uranium
Phosphate

Mt. Elephant

(Ashburton, WA)

Gold, Copper

Bobrikovo

(Luhansk, UKRAINE)

Gold, Silver, Zinc, Lead,
Antimony

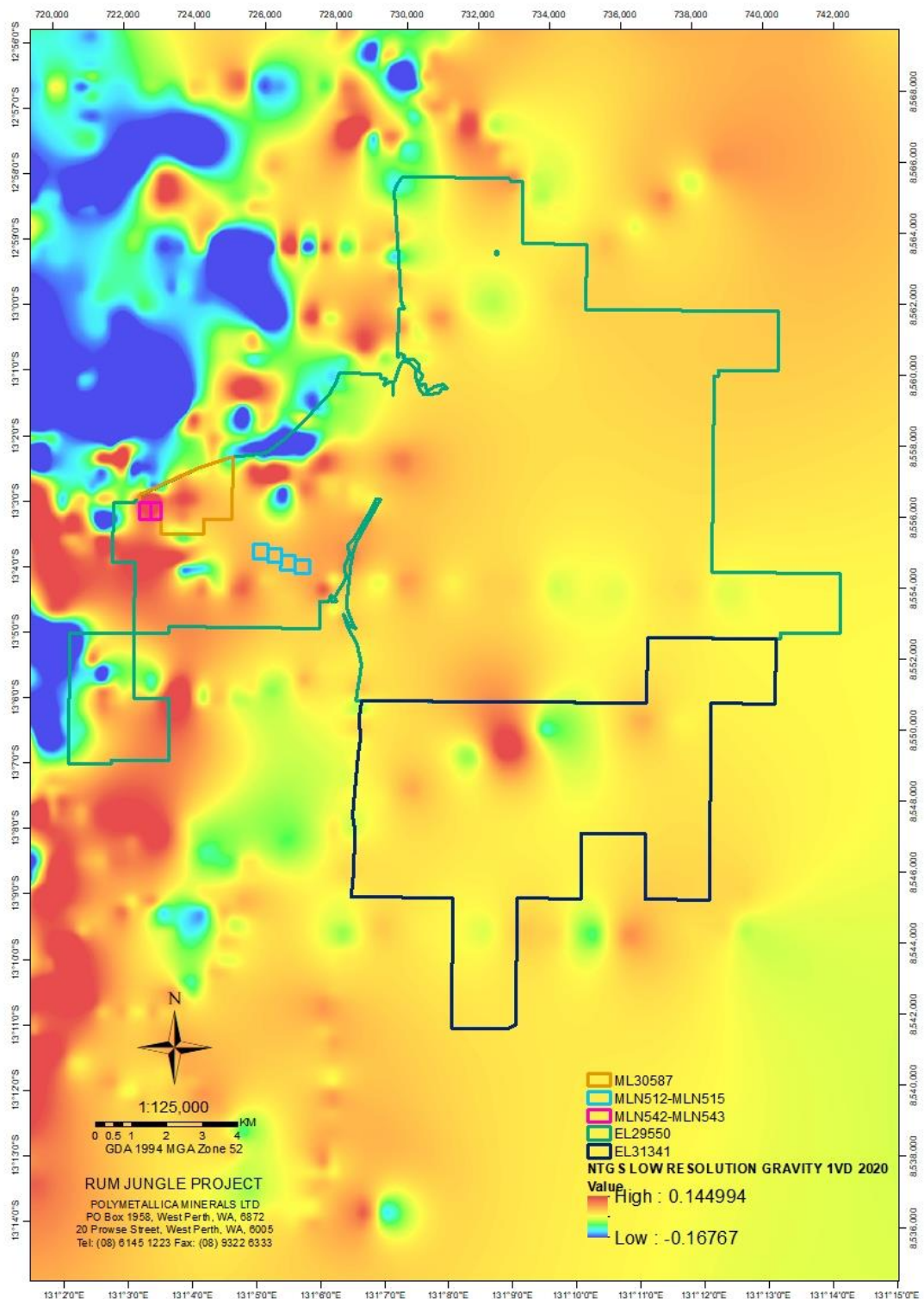


Figure 4 Rum Jungle Project Historical Low-Resolution Aerial Gravity (NTGS)



20 PROWSE STREET, WEST PERTH, WA, 6005, AUSTRALIA
PO BOX 1958, WEST PERTH, WA, 6872, AUSTRALIA
TEL (08) 9474 6166 FAX (08) 9322 6333
ACN 082 140 252





KORAB RESOURCES LIMITED

KORAB HOUSE

www.korab.com.au

Issued Capital

Issued Shares: 367 Mln

Last Price: 0.8 cents

Capitalisation: \$3 Mln

Listing Code

ASX: KOR

Directors

Andrej K. Karpinski

Executive Chairman

Executive Director

Anthony G. Wills

Non-executive Director

(Independent)

Alicja Karpinski

Non-executive Director

Projects

Rum Jungle

(Pine Creek, NT)

Magnesium, Gold, Silver, Tin
Zinc, Lead, Nickel, Copper,
Cobalt, Rare Earth Oxides,
Scandium, Lithium, Iron Ore
Manganese, Uranium
Phosphate

Mt. Elephant

(Ashburton, WA)

Gold, Copper

Bobrikovo

(Luhansk, UKRAINE)

Gold, Silver, Zinc, Lead,
Antimony

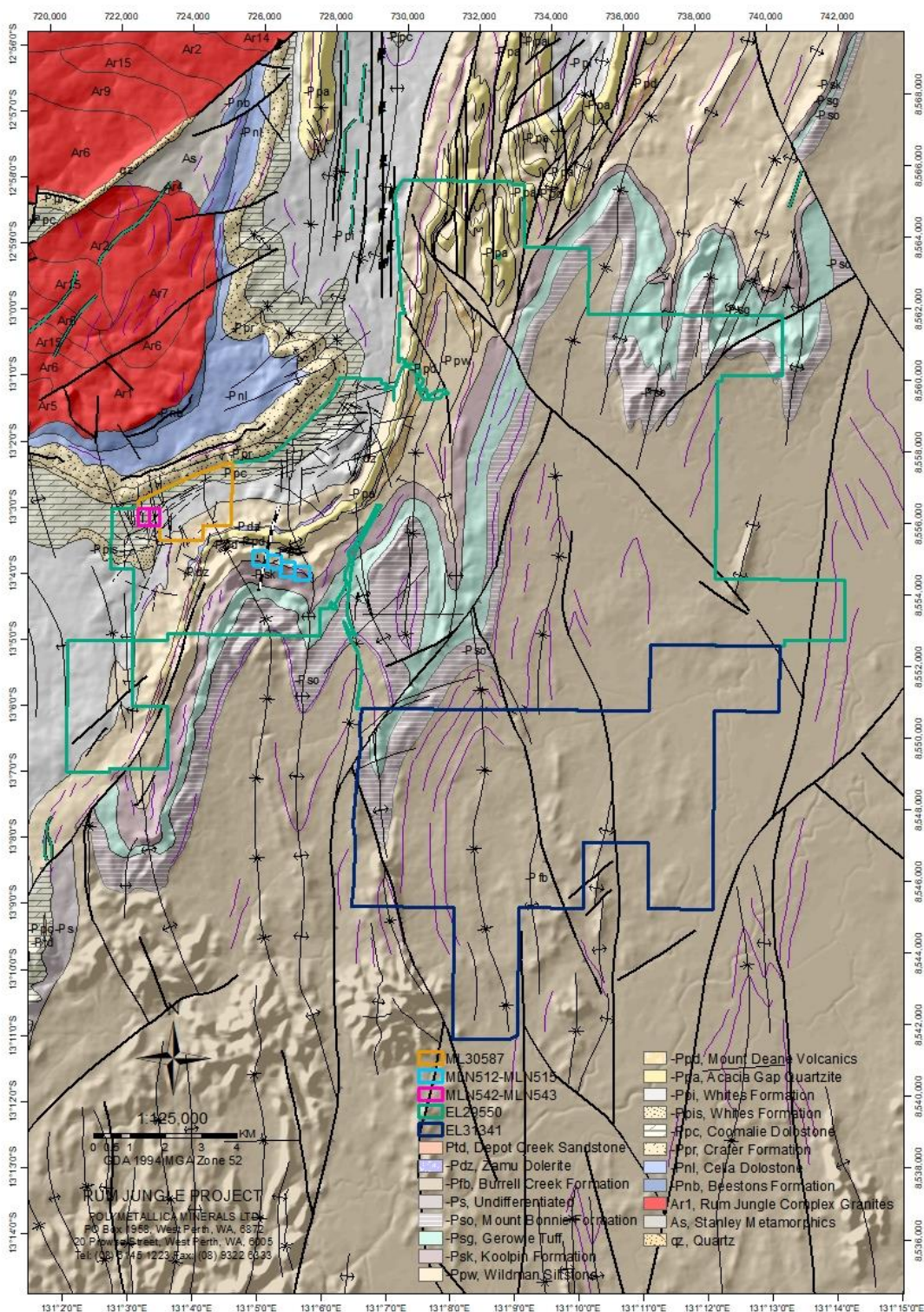


Figure 5 Rum Jungle Project Geology and Structural Features draped over Digital Elevation Model



20 PROWSE STREET, WEST PERTH, WA, 6005, AUSTRALIA
PO BOX 1958, WEST PERTH, WA, 6872, AUSTRALIA
TEL (08) 9474 6166 FAX (08) 9322 6333
ACN 082 140 252

