

SOLSTICE

MINERALS LTD
ASX: SLS

Cashed up, hunting gold

Investor Update July 2024

IMPORTANT NOTICES AND DISCLAIMERS

Nature of Document

The purpose of this presentation is to provide general information about Solstice Minerals Limited (Solstice) which is current as at the date released unless otherwise specified. It is information in a summary form and does not purport to be complete. The information in this presentation should be read in conjunction with Solstice's other announcements lodged with the ASX.

No Advice or Offer

This presentation is presented for informational purposes only. It does not constitute an offer, invitation, solicitation or recommendation or advice with respect to the issue, purchase, or sale of any securities or other financial products in Solstice. It is not intended to be, and is not, a prospectus, product disclosure statement, offering memorandum or private placement memorandum for the purpose of Chapter 6D of the Corporations Act 2001. It is not recommended that any person makes any investment decision in relation to Solstice based solely on this presentation. This presentation does not necessarily contain all information which may be material to the making of such a decision. Any investor should make its own independent assessment and determination as to Solstice's prospects prior to making any investment decision and should not rely on the information in this presentation for that purpose.

This presentation does not constitute an offer to sell, or the solicitation of an offer to buy, any securities in the United States or to any 'US person' (as defined in Regulation S under the US Securities Act of 1933, as amended (Securities Act)) (US Person). Securities may not be offered or sold in the United States or to US Persons absent registration or an exemption from registration. Solstice's shares have not been, and will not be, registered under the Securities Act or the securities laws of any state or jurisdiction of the United States. This presentation is not for distribution directly or indirectly in or into the United States or to US Persons.

Except for statutory liability which cannot be excluded, Solstice as well as its officers, employees and advisers expressly disclaim any responsibility for adequacy, accuracy, reasonableness or completeness of the material contained in this presentation and exclude all liability whatsoever (including in negligence) for any loss or damage which may be suffered by any person as a consequence of any information in this presentation or any error or omission therefrom. Solstice accepts no responsibility to update any person regarding any inaccuracy, omission or change in information in this presentation or any other information made available to a person nor any obligation to furnish any person with any further information.

Disclaimer/Forward Looking Information

This presentation contains certain forward-looking statements, guidance, forecasts, estimates, prospects and projections in relation to future matters that may involve risks or uncertainties and may involve significant items of subjective judgement and assumptions of future events, which as at the date of this presentation are considered reasonable, but that may or may not eventuate (Forward-Looking Statements).

Forward-Looking Statements can generally be identified by the use of forward-looking words such as, 'anticipate', 'estimates', 'will', 'should', 'could', 'may', 'expects', 'plans', 'forecast', 'target' or similar expressions and may include, without limitation, statements regarding plans, strategies and objectives of management, anticipated production and expected costs. Indications of, and guidance on future earnings, cash flows, costs, financial position and performance are also Forward-Looking Statements.

Persons reading this presentation are cautioned that such statements are only predictions, and that actual future results or performance may be materially different. Forward-Looking Statements, opinions and estimates included in this presentation are based on assumptions and contingencies which are subject to change, without notice, as are statements about market and industry trends, which are based on interpretation of current market conditions. Forward-Looking Statements are provided as a general guide only and should not be relied on as a guarantee of future performance.

Forward-Looking Statements are subject to known and unknown risks, uncertainties and other factors that may cause the Company's actual results, level of activity, performance or achievements to be materially different from those expressed or implied by such forward-looking information. No representation or warranty, express or implied, is made by Solstice that any Forward-Looking Statement will be achieved or proved to be correct. Further, Solstice disclaims any intent or obligations to update or revise any Forward-Looking Statements whether as a result of new information, estimates or options, future events or results or otherwise, unless required to do so by law.

Compliance Statement

The information in this presentation that relates to Exploration Results is extracted from the ASX announcements (Original Announcements), as referenced, which in the case of Solstice announcements are available at www.solsticeminerals.com.au. Solstice confirms that it is not aware of any new information or data that materially affects the information included in the Original Announcements. Solstice confirms that the form and context in which the Competent Persons' findings are presented have not been materially modified from the original announcement.



Experienced,
well-funded and
deal ready gold
and base metals
explorer.

Board and management team with
**~\$2bn in cumulative past
transactions**

Strong mix of technical and capital
markets expertise

A large, quality ground holding in
highly prospective West Australian
terrain

Outstanding war chest of \$17.5M
for acquisition and corporate
development opportunities

Corporate Overview

ASX	100.3M	A\$16.0M	A\$17.5M	NIL	A\$0.175c per share cash
SLS	Shares on issue	Market Cap at 16.0c	Cash (as at 31 March 2024, unaudited), inc. cash Hobbes Sale ¹	Debt	
14.7M	16.2M	3.7M			
Listed 20c Options	Unlisted 29c Options	Performance Rights			

Board & Associates	Precision Opportunities Fund	Nero Resource Fund	Tim Goyder Entities	Top 20
5.9%	8.5%	7.5%	2.4%	46.0%

1. Proceeds per ASX: SLS 9 April 2024 'Sale of Hobbes Exploration Licence for \$12.5M'.

Experienced board and management team

Matthew Yates Non-Executive Chairman

+35 years (Geologist) Former Executive Chairman and former CEO & MD of OreCorp Limited, former MD of OmegaCorp and Joint MD of Mantra Resources

Silfia Morton/James Doyle Joint Company Secretaries

Corporate and capital markets advisory experience as well as past accounting and senior audit management roles

Nick Castleden Managing Director and CEO

+25 years (Geologist) Former MD Apollo Consolidated Ltd, extensive industry experience with LionOre, MPI, Perilya Mines, MIM

Dr Mark Alvin Exploration Manager

+25 years (Geologist) Experienced explorationist, formerly with Rio Tinto, Nyrstar, Strandline & MRG Metals

Michael Emery Non-Executive Director

Mining Engineer with MBA, former resources analyst, +15yrs in resource and capital markets

Exploration Team

Small team of experienced in-house geological staff, and access to highly credentialed consultants

Alastair Morrison Non-Executive Director

+30 years (Geologist) Former Exploration Manager of East African Gold Mines, last 18 years as analyst & portfolio manager

Deal ready.

Hobbes sale to Northern Star (ASX:NST) for \$12.5m places Solstice in strong cash position

Excellent position to acquire gold targets that complement the current Yarri gold tenure

Flexibility to act on commercial opportunities to add shareholder value

Board and Management with history of corporate results:

Matt Yates – ASX: OreCorp – \$270m takeover, ASX: Mantra Resources – \$1.02b takeover 2010, and ASX: OmegaCorp - \$200m takeover 2007.

Nick Castleden – ASX: Apollo Consolidated - \$181m takeover 2021

Alastair Morrison – East African Gold Mines Ltd - US\$252m takeover by Placer Dome 2003

Current Portfolio - High Value Gold & Metals Assets in WA's Yilgarn Craton.

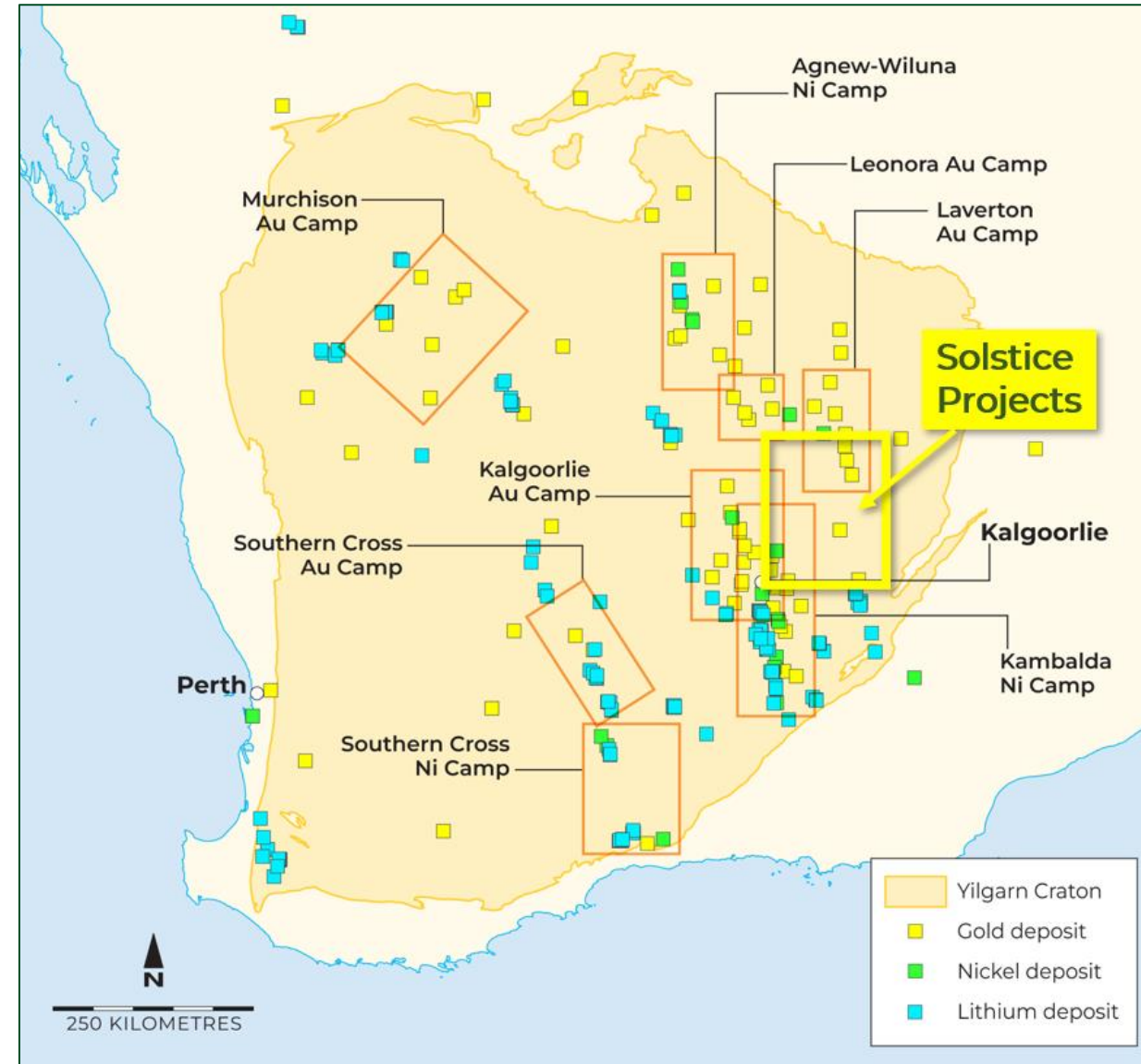
Operating in a renowned metals exploration terrain

Significant **>2,000km²** ground holding in the heart of the Goldfields, access agreements largely in place

Solstice technical team with deep experience - **data-led target generation and 'boots on ground' validation**, with focus on new gold discovery

Compelling mix of **high-impact greenfield and follow-up gold prospects** & pipeline of new targets taking shape

Strong financial capacity and skills to pursue corporate growth opportunities



Belt scale land positions in Eastern Goldfields.

Extensive high-endowment gold tenure at **Yarri Project**, proven high-tenor nickel sulphide at **Ringlock Project** all within **150km of Kalgoorlie**

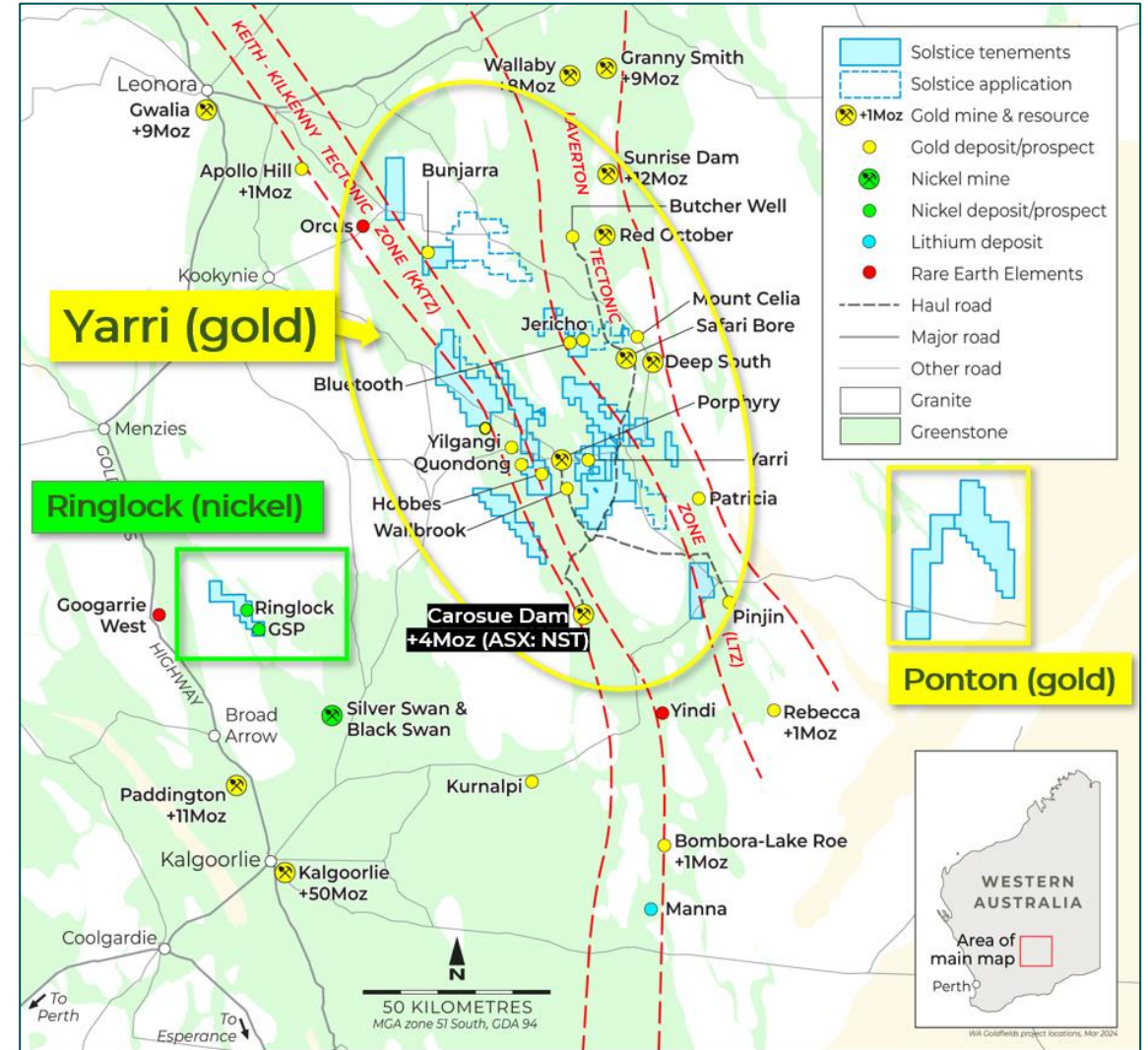
100% owned tenure highly prospective for gold, largely unexplored for other metals

Solstice is a key player around >4Moz Carosue Dam-Porphyry gold hub (Northern Star ASX: NST)

Extensive ground holding assembled over 100km of strike, adjacent to operating gold mines

Ringlock Dam - nickel sulphide prospects on strike extensions of ultramafic belt that hosts the high-grade Silver Swan massive nickel sulphide deposit

Other project areas – e.g. **Ponton** offer new-frontier exploration opportunities





Yarri Regional.
Pipeline of high-quality
gold targets in proven
terrain.

>100km of prime soil-covered gold exploration tenure.

Sequential aircore drilling of new targets through 2024

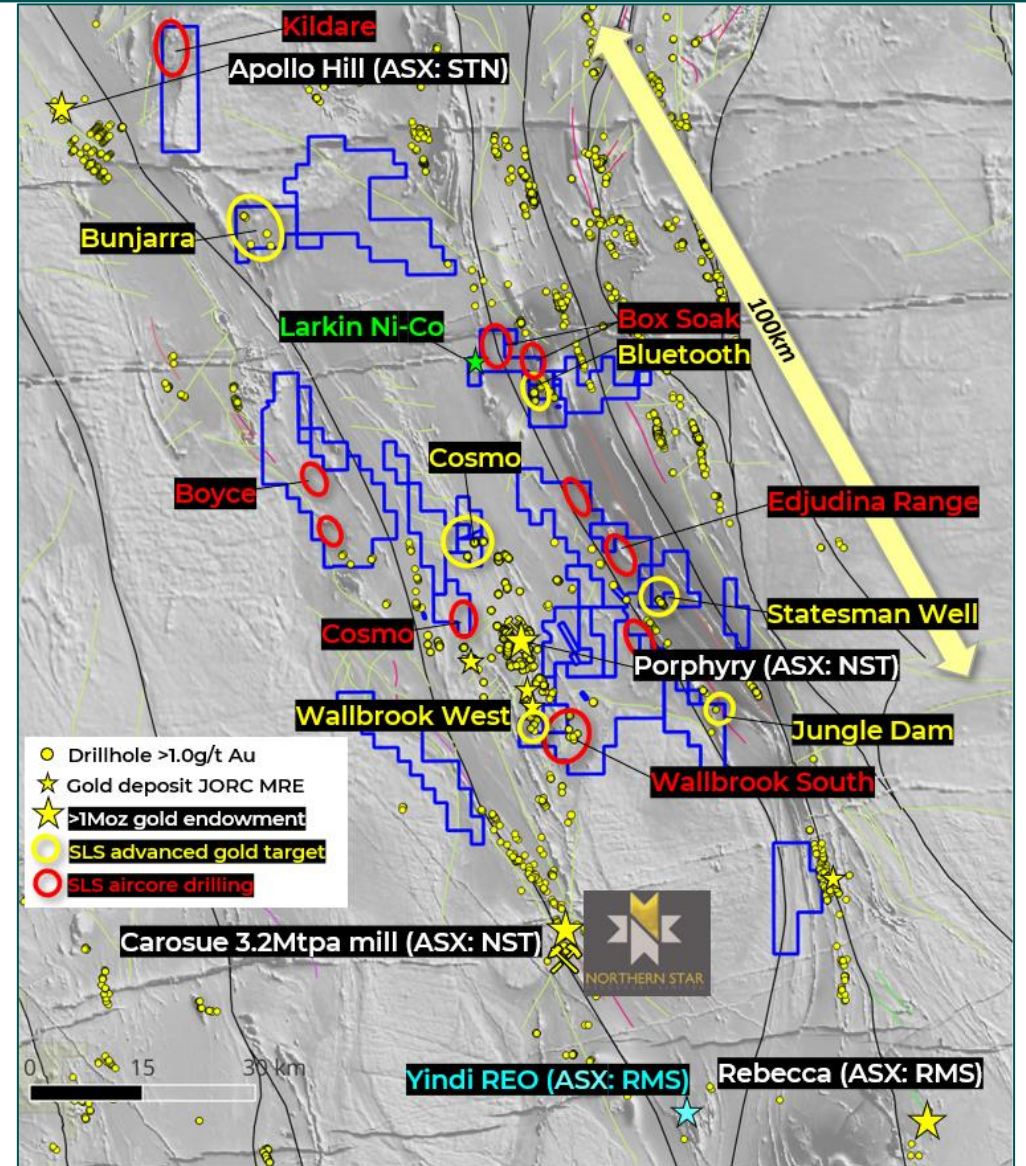
First-pass aircore drilling through cover = a tried-and-true gold discovery pathway

Disciplined target generation + aircore drilling = cost efficiency

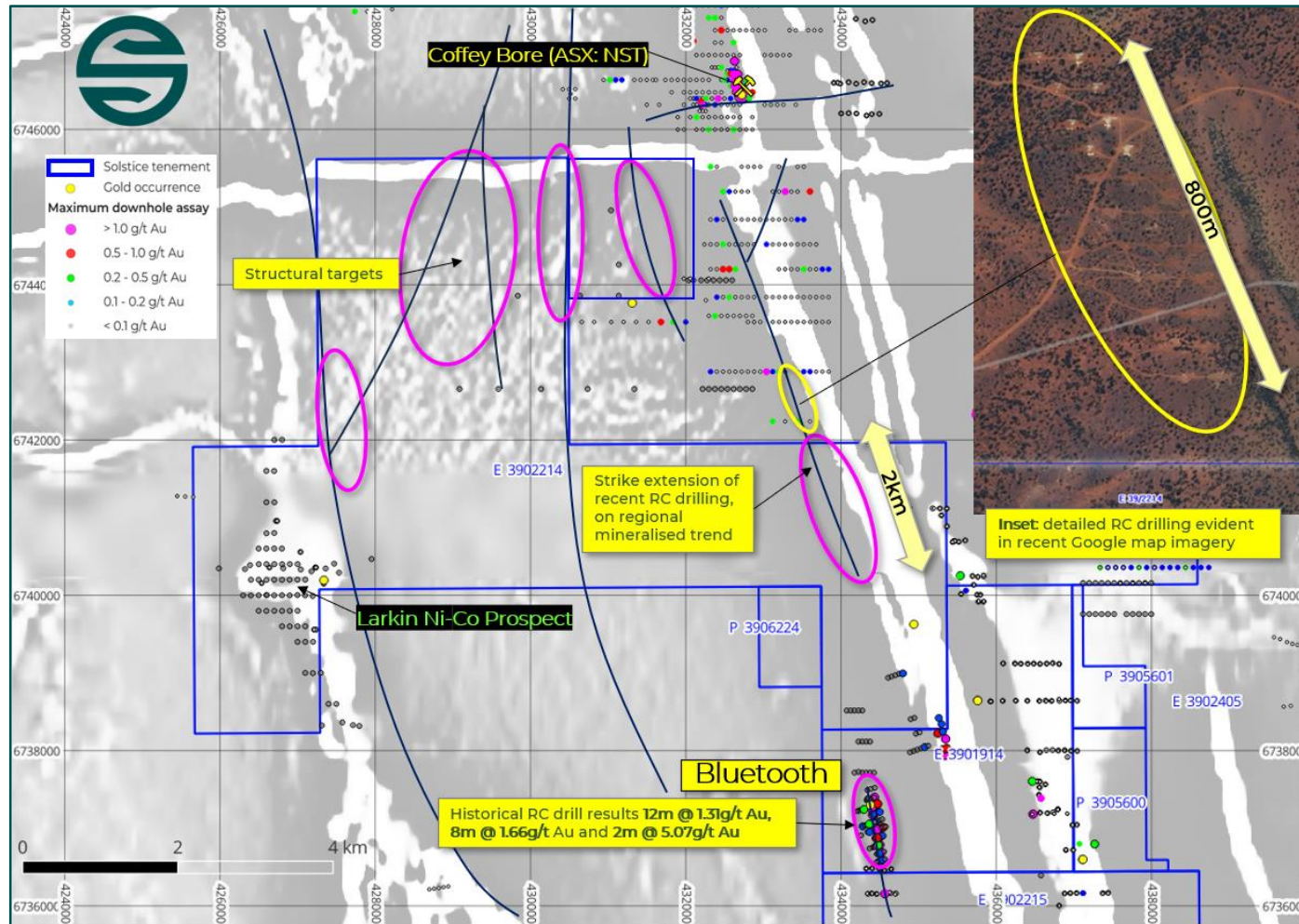
Hobbes sale to Northern Star demonstrates that **new discoveries are well placed for commercial outcomes** in an active gold camp

Multiple 100% owned kilometre scale untested targets, plus strike & structural prospects with >1.0g/t gold results¹ in historical drilling

1. For historical >1g/t gold drilling refer to ASX: ORR 8 February 2022 'Exploration Update, Eastern Goldfields, Western Australia', ASX: SLS 14 March 2022 'Prospectus', ASX: ORR 15 March 2022 ('Demerger & IPO Presentation'), and ASX: ORR 26 March 2022 ('March 2022 Quarterly Activities Report'). For Yindi REE source: ASX: RMS 23/01/2023



Greenfield Gold Targets.



Box Soak Gold Targets.

Gold mineralised setting¹, **multiple structural targets** below widespread alluvial cover

Recent **RC and diamond drilling by neighbour**, geology trends directly into Solstice licence

Widespread +1g/t gold intercepts in historical drilling¹ at **Bluetooth Prospect**, follow-up targets

Kilometre-scale greenfield gold structural targets undergoing first-pass aircore drilling²

1. For historical Max downhole gold drilling refer to WA DMIRS/Data and Software Centre/Statewide spatial datasets/Maximum grade in-hole drilling data 29 Sept 2021, and ASX: SLS 14 March 2022 'Prospectus',
2. ASX: SLS 16 January 2024 'Solstice Readies For Drilling New High Priority Gold Targets'.

Greenfield Gold Targets.

Bunjarra.

In well-endowed terrain & on regional gold trend

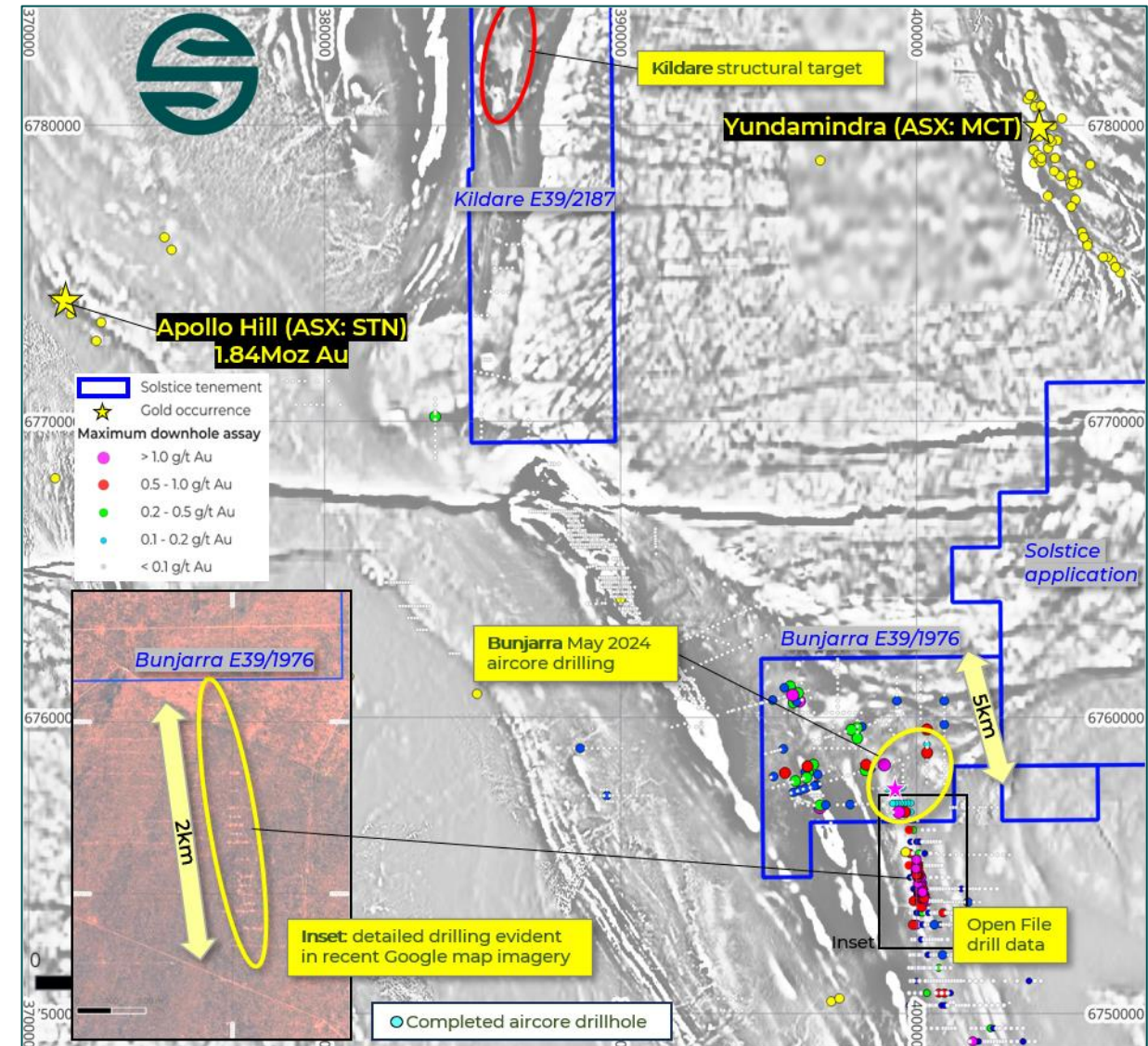
Excellent fold hinge structural setting 15km from Saturn Metals' (ASX: STN) 1.8moz¹ Apollo Hill deposit

High density RC and Diamond drilling directly south of licence points to active gold setting

Solstice reconnaissance aircore results to 2m @ 1.85g/t Au², multiple anomalous zones at end of hole (EOH)

Historical³ aircore results to 1m @ 14.8 g/t Au and rock-chip assays to 6.67g/t Au demonstrates grade potential

1. ASX: STN 28 June 2023 'Apollo Hill Gold Resource Upgraded to 1.84moz'.
2. ASX: SLS 16 January 2024 'Solstice Readies For Drilling New High Priority Gold Targets'.
3. ASX: ORR 8 February 2022 'Exploration Update Eastern Goldfields Western Australia'.



Greenfield Gold Targets.

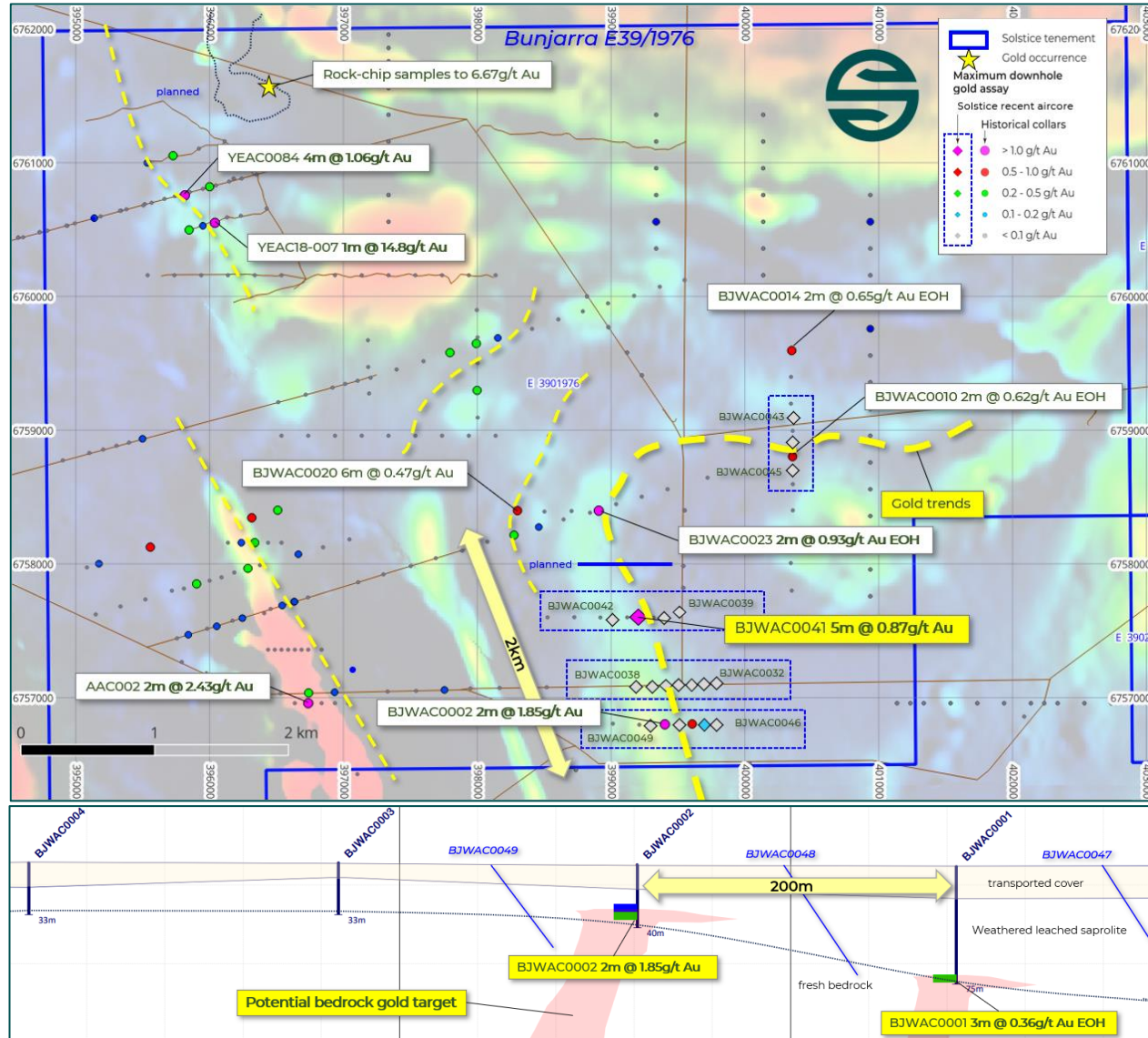
Bunjarra cont.

Series of >1km targets under shallow alluvial cover, supported by **widespread EOH gold anomalism** in historical holes¹ and first stage aircore drilling²

Wide-spaced aircore drilling 2023² and 2024³ identified multiple new mineralised positions below shallow cover

Altered EOH samples below leached weathering profiles, gold often associated with porphyry intrusive

Scheduled for infill aircore and **first RC testing H2 2024**



1. ASX: ORR 8 February 2022 'Exploration Update, Eastern Goldfields, Western Australia'.
2. ASX: SLS 10 October 2023 'Greenfield Gold Drilling Identifies New Gold Prospects at Bunjarra'.
3. ASX: SLS 24 June 2024 'Further Gold Anomalism at Bunjarra Points Toward Drill Targets'.

Greenfield Gold Targets.

Wallbrook South.

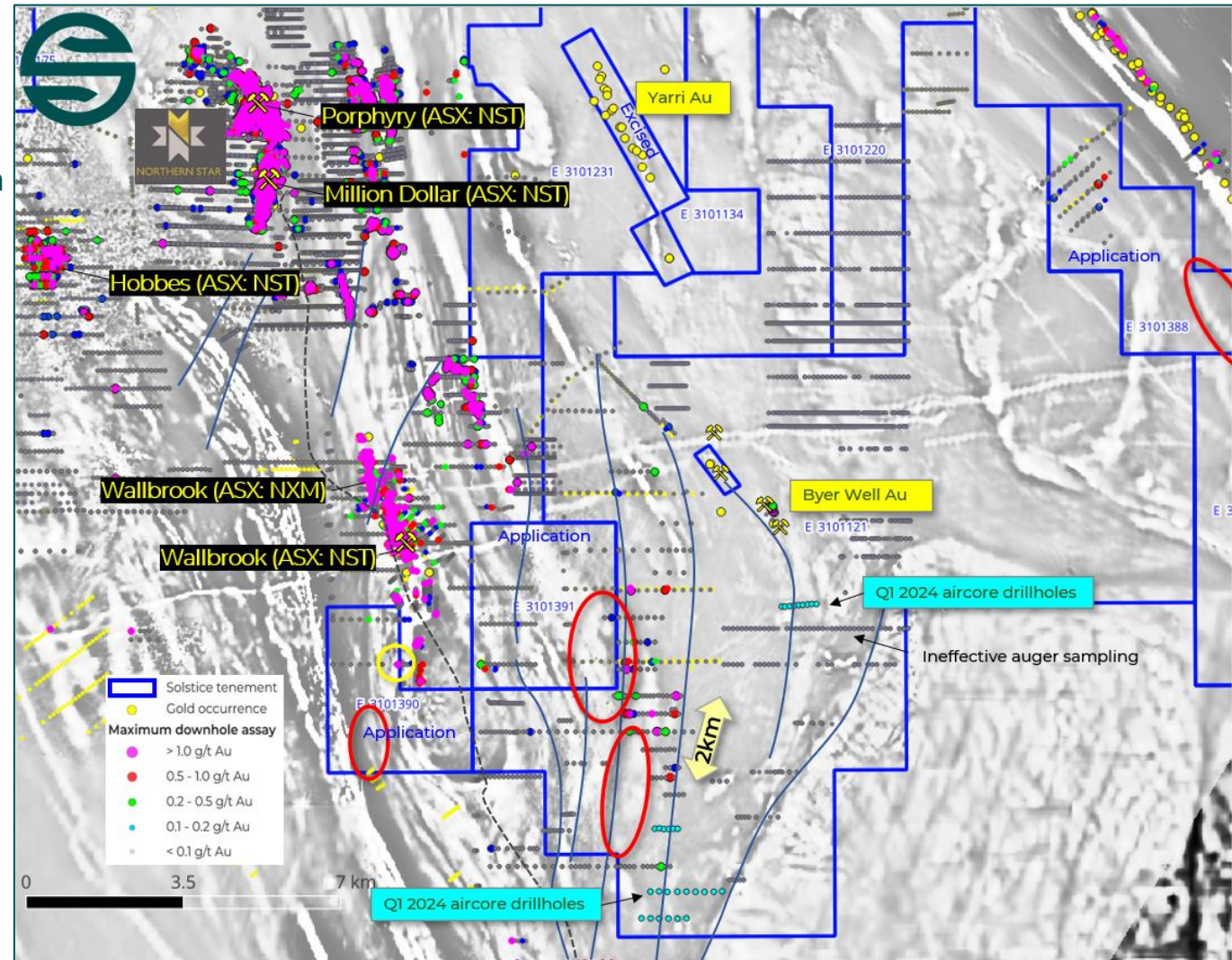
Large landholding in a **gold rich structural setting** south of key Wallbrook-Porphry trend, widespread alluvial cover

Strong Nth and NE structures only partly-tested by past aircore drilling and 2024 recce lines

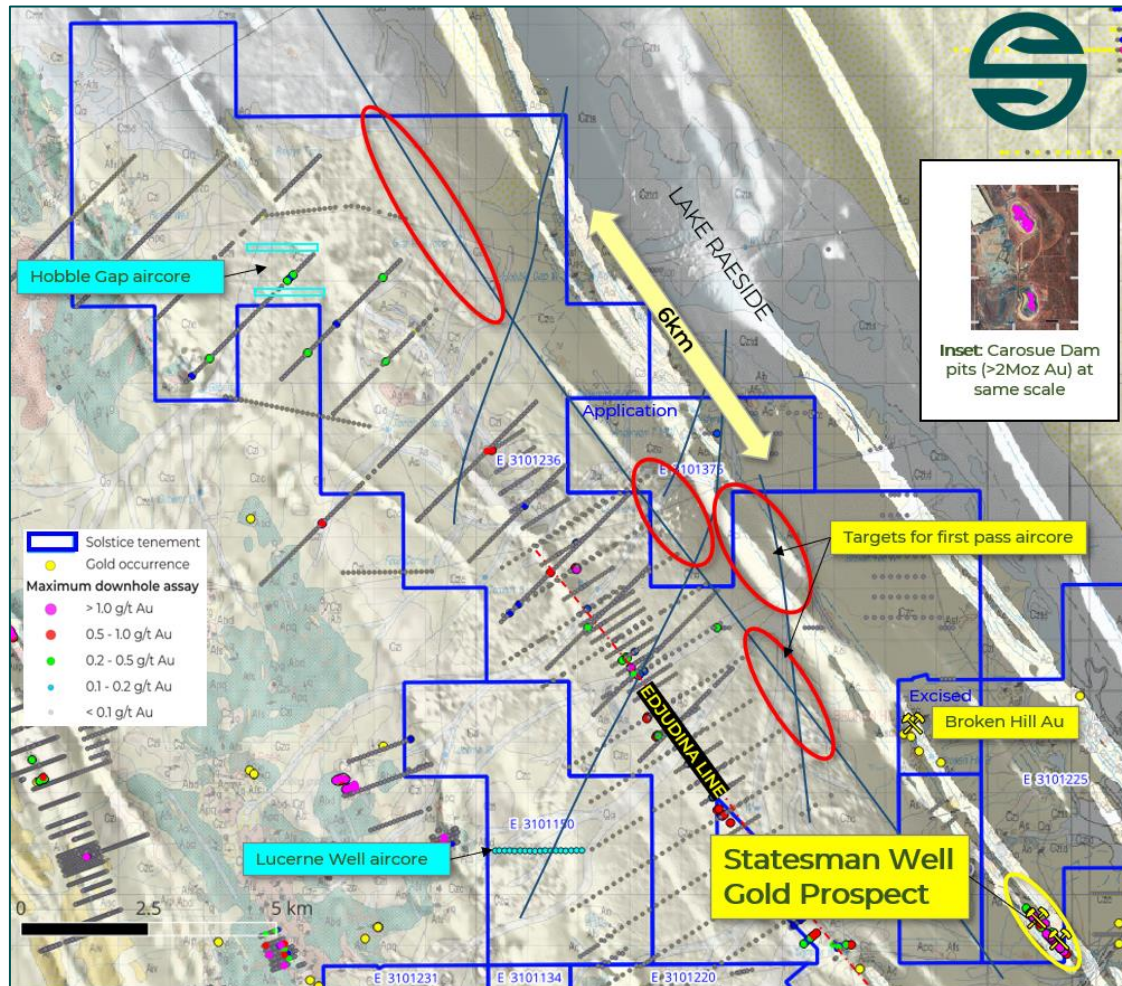
Widespread +1g/t gold intercepts in historical drilling¹, piecemeal exploration history

Next tier of greenfield structural gold targets in preparation for aircore drilling

1. For historical Max downhole gold drilling refer to WA DMIRS/Data and Software Centre/Statewide spatial datasets/Maximum grade in-hole drilling data 29 Sept 2021.



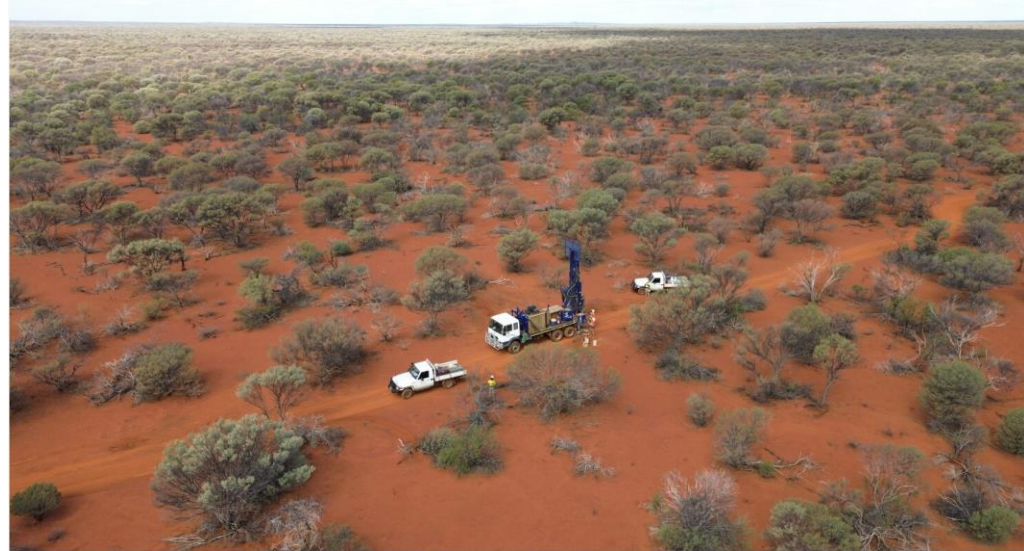
Greenfield Gold Targets.



Edjudina Range.

On regional **Statesman Well** to **Bluetooth** structural and geological trend, strike-extensive gold prospects in outcropping Banded Iron Formation (BIF) terrain¹

Kilometre-scale greenfield gold structural targets in preparation for first-pass aircore drilling²



1. For historical Max downhole gold drilling refer to WA DMIRS/Data and Software Centre/Statewide spatial datasets/Maximum grade in-hole drilling data 29 Sept 2021,
2. ASX: SLS 13 February 2024 'Drilling Underway at New Gold Targets'.

Advanced Gold Targets.

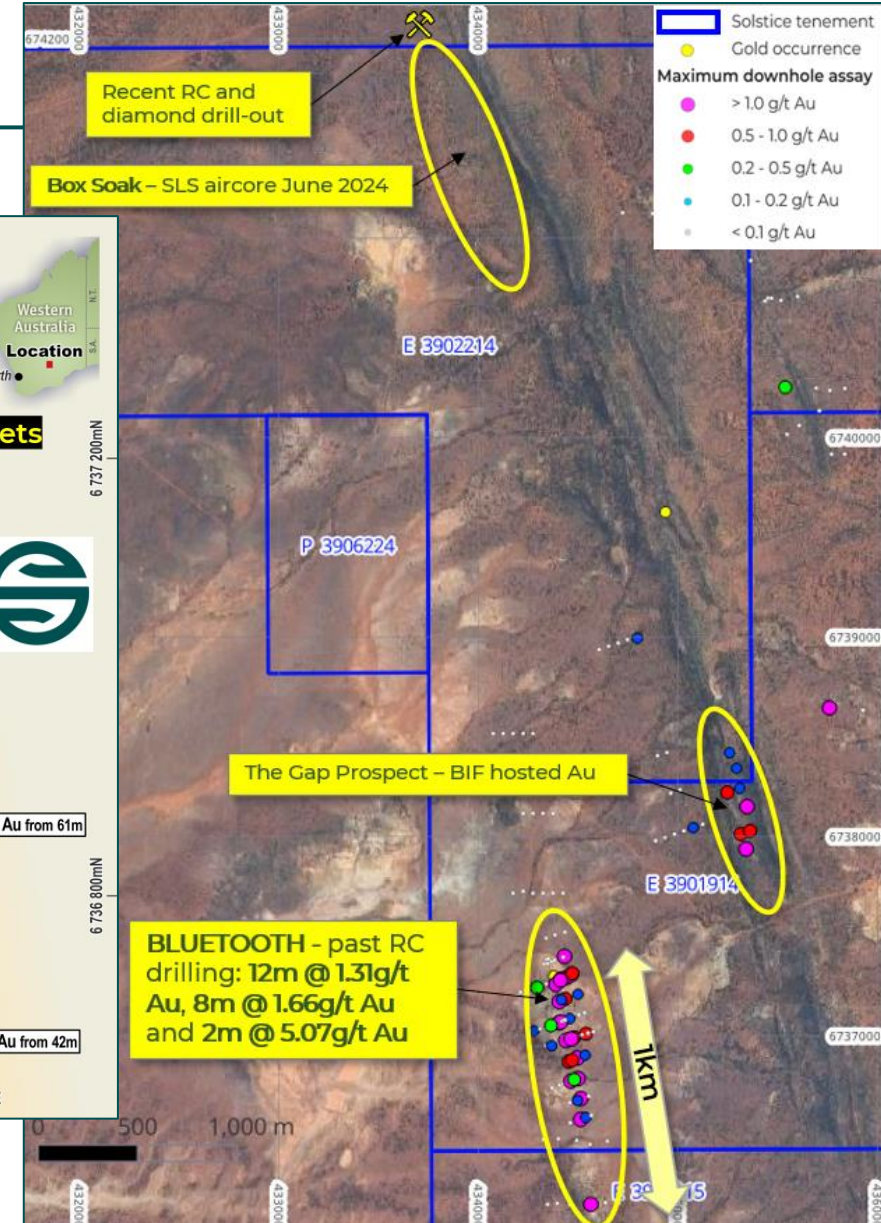
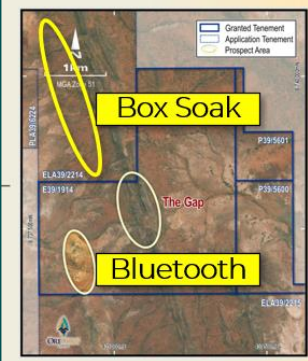
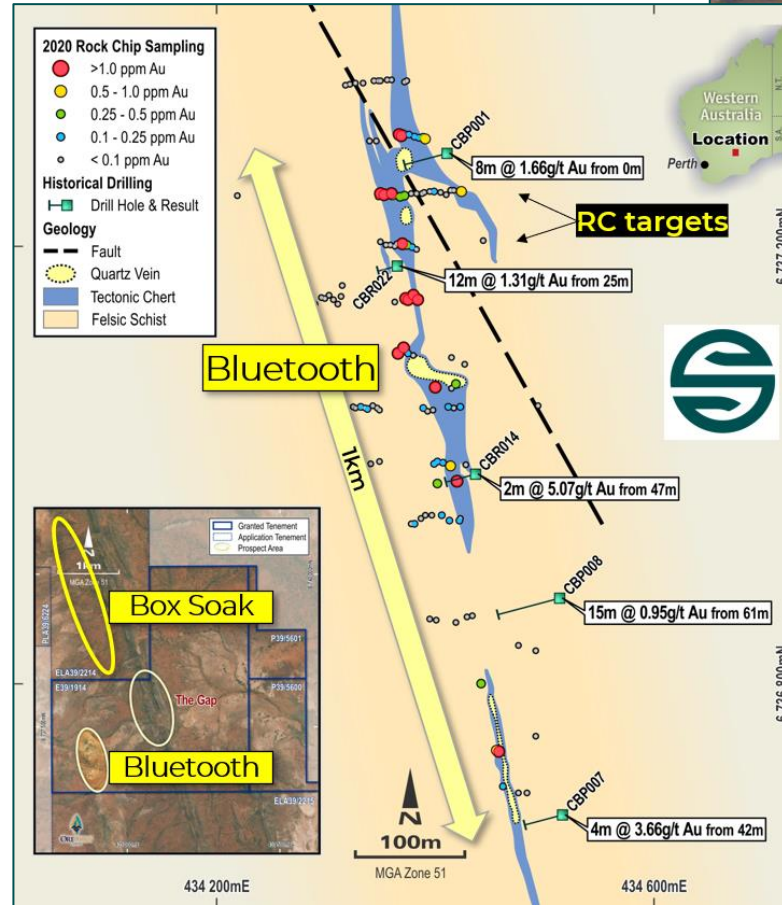
Bluetooth.

Widespread +1g/t gold intercepts in piecemeal historical RC drilling¹

Silicified chert and quartz veining with untested plunge potential

Drilling at wide spacing, offers infill and extensional targets

Heritage cleared and **ready for RC drilling**



1. For historical Max downhole gold drilling refer to WA DMIRS/Data and Software Centre/Statewide spatial datasets/Maximum grade in-hole drilling data 29 Sept 2021, and ASX: SLS 14 March 2022 'Prospectus'.

Basemetal Potential?

Cosmo – possible Cu-Au VMS

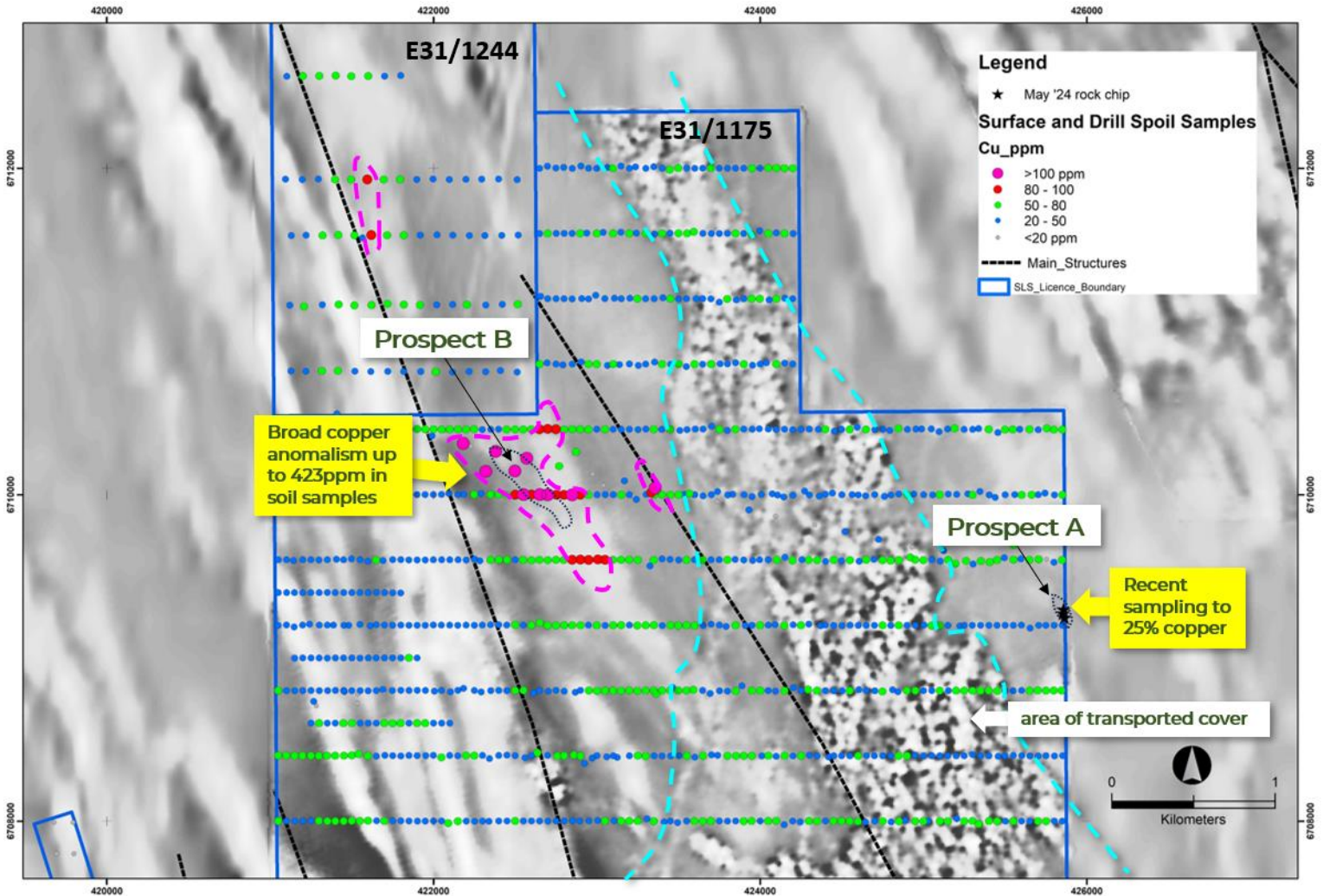
25.0% Cu, 6.1g/t Au and 137g/t Ag and **19.5% Cu, 3.7g/t Au** and 19g/t Ag in recent grab samples¹ at **Prospect A**

Unexplained copper in soil anomaly² extending **over 1km strike** at **Prospect B**

Permissive geological setting, limited historical basemetal work, no drilling, no modern geophysical surveys

Follow-up programs being designed

1. ASX: SLS 27 May 2024 'High Grade Rock Chip Samples to 25% Copper Highlight Base Metal Potential at Yarri Project'
2. Refer to ASX: SLS 28 April 2022 'Prospectus'.



Ponton Project. New frontier Exploration



Ponton Project.

Located 200km NE of Kalgoorlie in gneiss terrain

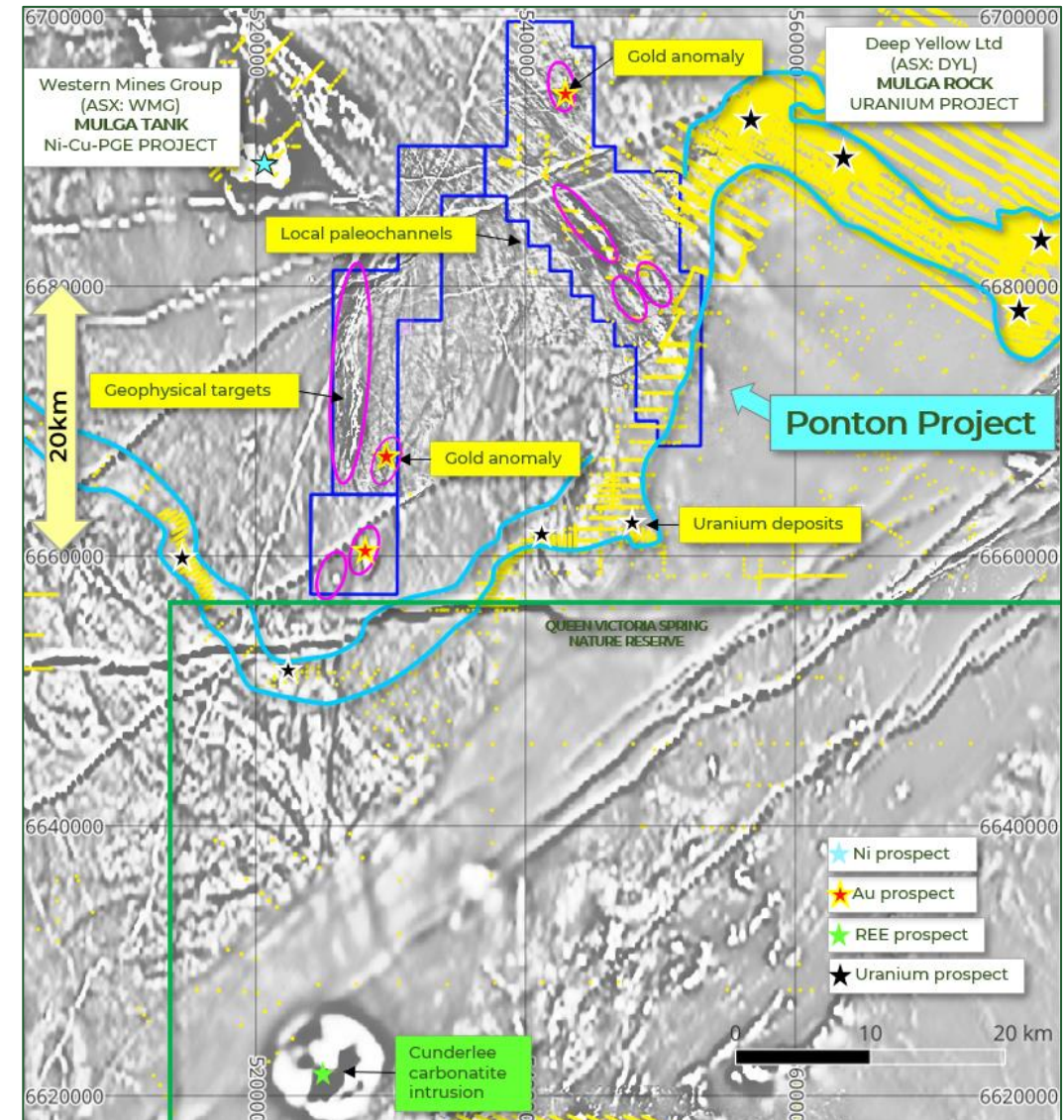
Largely unexplored, **frontier opportunity** at margin of Yilgarn Craton

Significant repeatable gold-in-soil anomalism¹ in aeolian sand country, anomalies coincident with underlying magnetic features

Gold anomalism untested by previous drilling²

Potential for gold, uranium, REO-niobium, nickel-sulphides

1. ASX: SLS 14 July 2022 'Significant Gold Anomalies Confirmed by Infill Soil Sampling at the Nippon Licence, Ponton Project',
2. For historical drill collars refer to WA DMIRS/Data and Software Centre/Statewide spatial datasets/Mineral Exploration Drillholes.



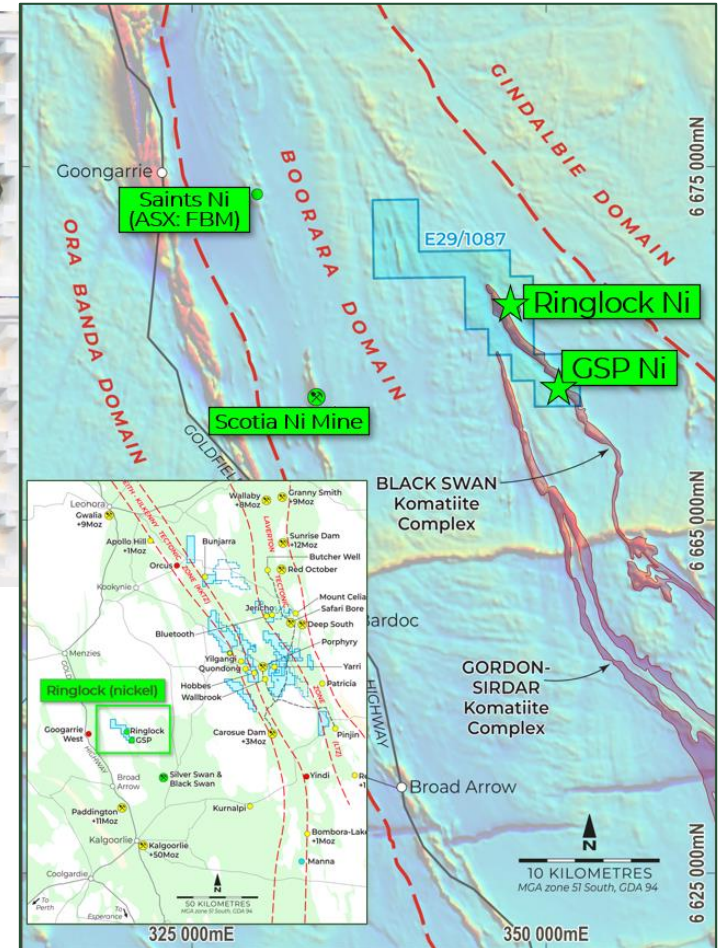
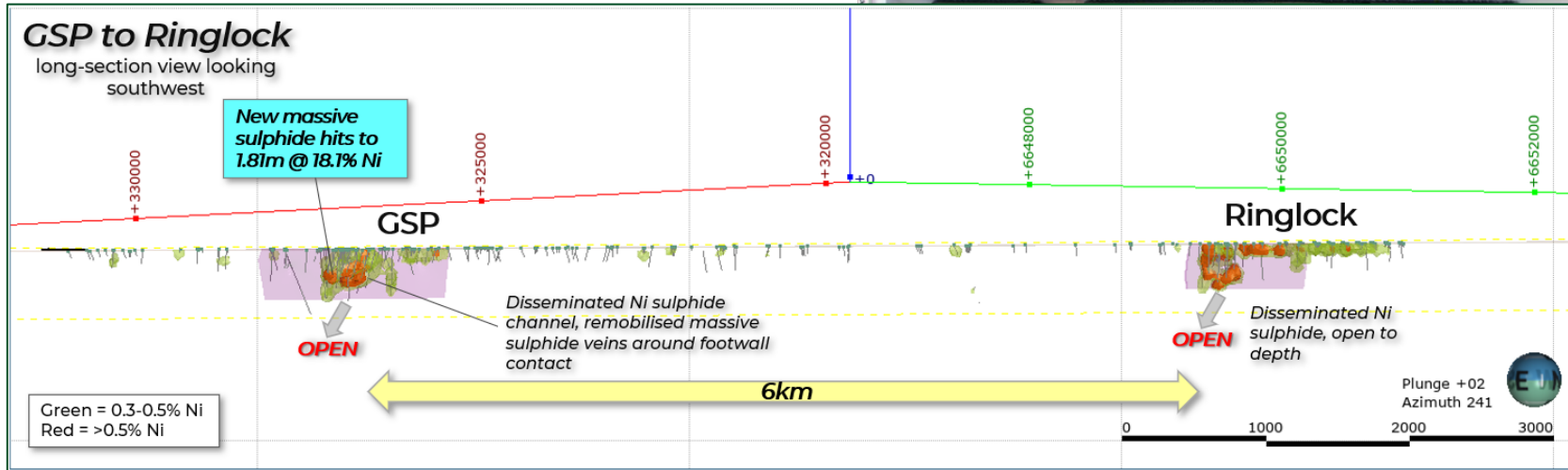
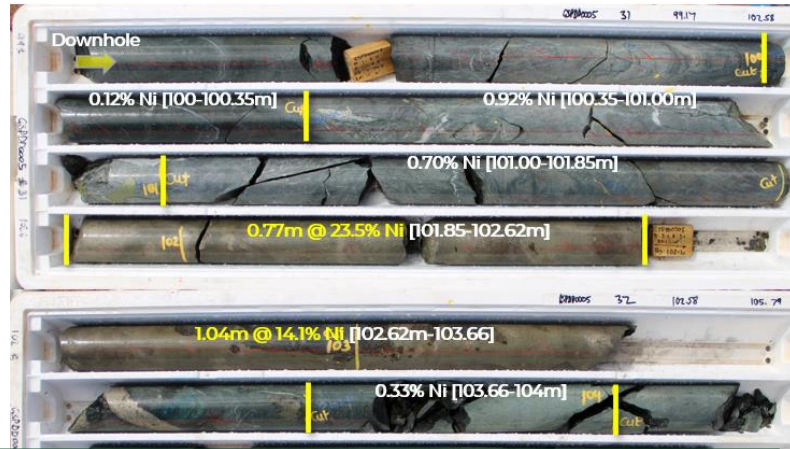
Ringlock Project. Nickel sulphides. Grade is King.



GSP Prospect: drill results 1.81m @ 18.1% nickel on Silver Swan trend.

Advanced massive sulphide target at **GSP** with high-tenor nickel sulphide intercepts¹

- 8.0m @ 2.4% nickel from 113.4m (GS033)
- 2.9m @ 2.9% nickel from 166.7m (GS013)
- 4m @ 2.3% nickel from 104m (MJRC047)
- 6m @ 2.3% nickel from 85m (RPD002)
- 4.0m @ 1.4% nickel from 145m (MJRC048)



1. ASX: SLS 02/12/2022 'Commencement of Nickel Drilling at Ringlock Dam', and ASX: SLS 10/03/2023 'High Grade Nickel Sulphide Drill Results at GSP Prospect'.

Near term news flow and upcoming catalysts.



Sequential aircore drilling of **prime soil-covered gold targets**



Follow-up aircore/RC drilling as prospects evolve



Regional: identification and ranking of new gold targets and other metals potential



~\$17.5M cash allows fast, non-dilutive operational flexibility



Ongoing review and assessment of new corporate development opportunities

SUMMARY

Extensive, prospective and hard to replicate ground package in Eastern Goldfields

Compelling new structural targets for first-stage testing

Commitment to review and turn-over ground

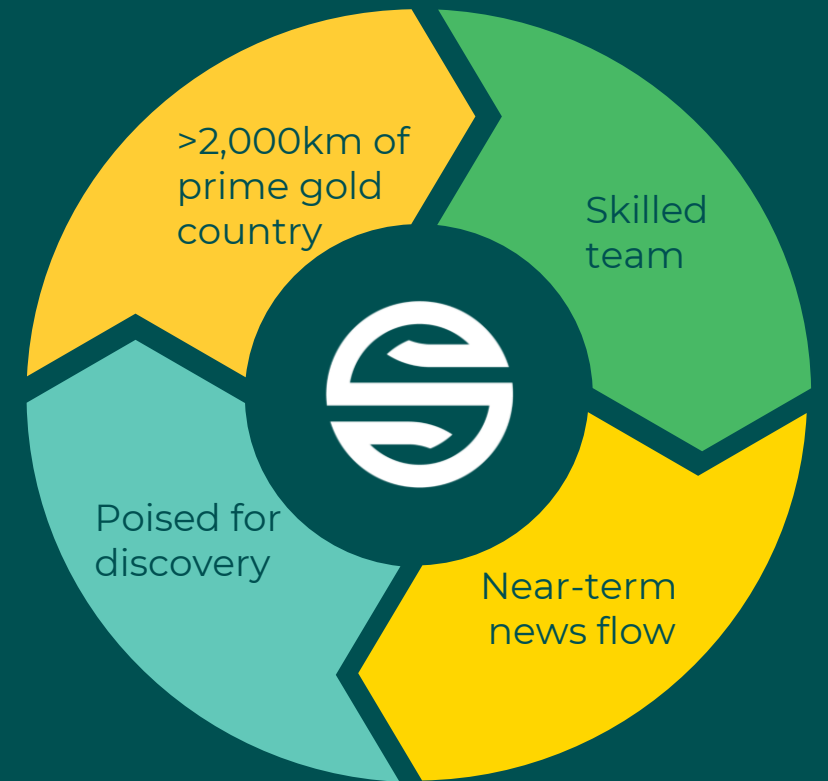
Next door to existing infrastructure, proven commercial pathways

Robust cash position of \$17.5M allows corporate development opportunities

Excellent leverage to exploration success, commercial outcomes

Pipeline of other exciting drill ready and greenfield gold and metals targets

Proven exploration and corporate team



Thank you.