

ASX Release

3rd July 2024

Matrix Manganese Project – Drone Survey Commenced

Buxton Resources Ltd ('**Buxton**'; **ASX:BUX**) is pleased to advise that drone magnetic surveys have commenced at the Matrix Project in Arizona (Figure 1).

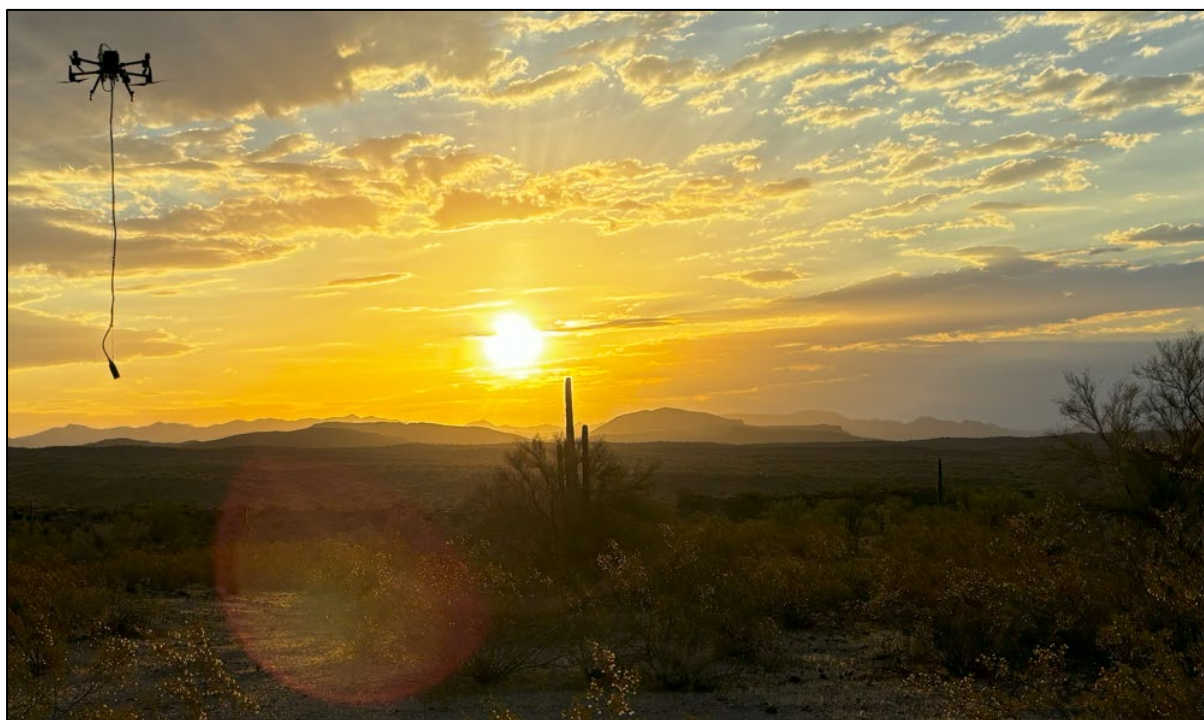


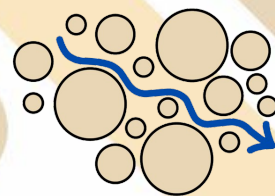
Figure 1: Dawn greets the Matrix Project magnetic survey drone - looking East over the Chapin Wash toward the Artillery Mountains, Mohave County, Arizona.

Buxton's CEO Marty Moloney said; *"This survey is the first step towards targeting our maiden drill program at the Matrix Project, and I'm pleased that it has commenced so soon after closing the acquisition."*

The survey will be flown at 30 metre flight lines for 1,290 line-kilometres to provide magnetic imagery at 6 metre resolution and photogrammetry / elevation products at 0.03 metre resolution (Figure 2).

Buxton's new survey aims to provide an improved basis for refining the structural model (Figure 3) ahead of first-pass drilling. Available open-file airborne magnetic imagery over the Matrix Project is based on a USGS survey flown in 1977 with 1,600 metre flight lines. Detailed orthophoto coverage (restricted to the tenure area) will





provide a basis for the Project environmental baseline status. The survey is expected to take 2 weeks to complete.

Buxton looks forward to updating shareholders on progress at this exciting project.

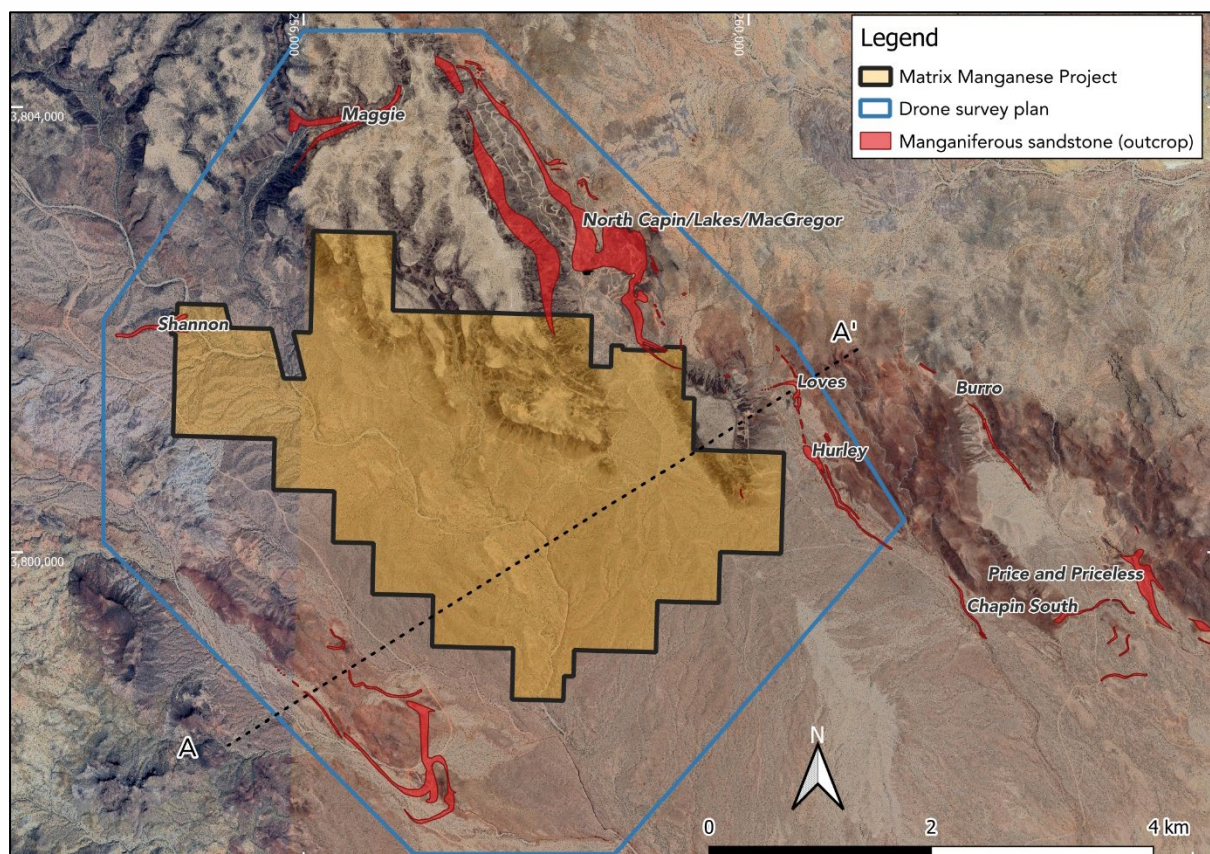


Figure 2: Matrix Manganese Project, Mojave County, Arizona. Known manganese mineralisation surrounds the Project on three sides and includes the Artillery Peak project which has a NI43-101 compliant resource of 277 Mt @ 2.8% Mn. Line of cross section A-A' (Figure 3) is indicated.

---000---

This announcement is authorised by the Board of Buxton Resources Ltd.

For further information, please contact:

Martin Moloney
Chief Executive Officer
marty@buxtonresources.com.au

Sam Wright
Company Secretary
sam@buxtonresources.com.au



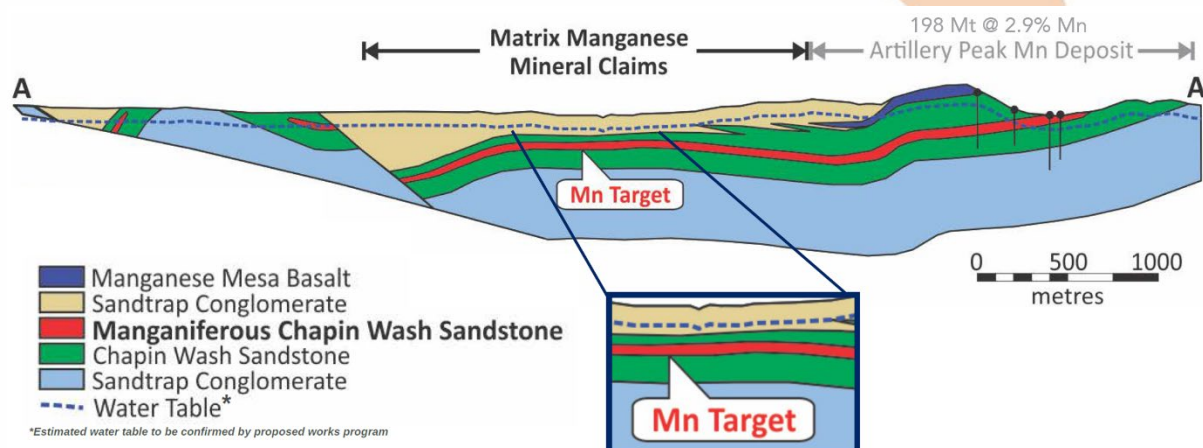
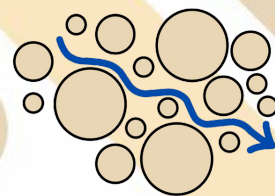


Figure 3: Matrix Project geological cross section, modified after Spencer et al 2015¹

About the Matrix Project

The Matrix Project consists of 154 Lode Mining Claims (MTX 001 - MTX 154) covering ~12 km² in Mohave County, Arizona. The Matrix Project claims cover the interpreted western extension of the Artillery Peak mineralisation. Buxton is targeting deposits of highly soluble manganese amenable to in-situ recovery mining methods.

Manganese was first discovered in the region around 1880. The deposits at the Artillery Peak occur as two distinct types of deposit, stratiform manganese deposits and vein manganese deposits. In 2011 American Manganese Inc. (now RecycliCo TSX.V:AMY) defined Indicated & Inferred Resources of 277 Mt @ 2.8% Mn. A Tetra Tech study in 2012 focused on a smaller area with Indicated and Inferred Resources of 82 Mt @ 2.3% Mn (with 198 Mt remaining current outside this area).²

In the 1980s the US Bureau of Mines evaluated the feasibility of in-situ and heap leaching for Mn extraction from domestic US ores. Of the 25 deposits examined, the Artillery Peak sample (3.5% Mn) presented the fastest and highest Mn recovery characteristics in column leaching³, and was the only deposit select for further evaluation targeting suitability for insitu recovery methods⁴ - work which was curtailed when the USBoM was abolished in 1996.

¹ Spencer, J.E., Richard, S.M., Johnson, B.J., Love, D.S., Pearthree, P.A., and Reynolds, S.J., (2015), Geologic map of the Artillery Peak and Rawhide Wash 7 ½ ' Quadrangles, Mohave and La Paz Counties, Arizona: Arizona Geological Survey Digital Geologic Map DGM -100, version 2.0, scale 1:24,000, 2 sheets. Section line B-B'

² Tribe, N. (2011). Mineral Resource Evaluation Report on the Artillery Mountain Manganese Property, Mohave County, Arizona, U.S.A

³ Pahlman, J. E., Khalafalla, S. E. (1988). Leaching of Domestic Manganese Ores with Dissolved SO₂. United States: U.S. Department of the Interior, Bureau of Mines.

⁴ Brink, S. E., Blake, R., & Marozas, D. (1995). Petrographic and Geochemical Analyses of Leach Samples From Artillery Peak, Mohave County, AZ. Report of Investigations to United States Department of the Interior & Bureau of Mines



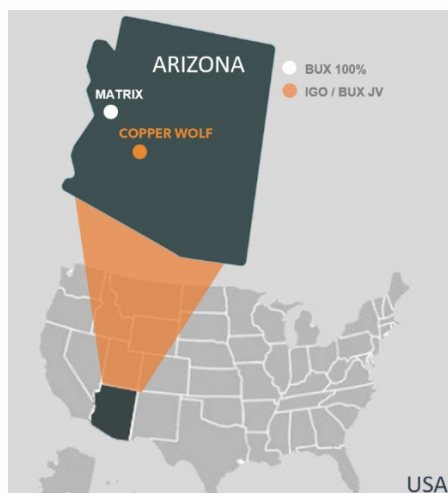
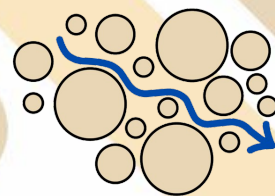


Figure 4: The Matrix Manganese Project, located in Arizona, around 3 hours' drive from Phoenix.

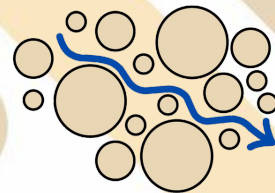
Cautionary Note Regarding Forward-Looking Information

This Announcement contains forward-looking statements and forward-looking information within the meaning of applicable Australian securities laws, which are based on expectations, estimates and projections as of the date of publication. This forward-looking information includes, or may be based upon, without limitation, estimates, forecasts and statements as to management's expectations with respect to, among other things, the timing required to execute the Company's programs, and the length of time required to obtain permits, certifications and approvals.

Wherever possible, words such as "anticipate", "believe", "expect", "intend", "should", "intend", "may" and similar expressions have been used to identify such forward-looking information. Forward-looking information is based on the opinions and estimates of management at the date the information is given, and on information available to management at such time. Forward-looking information involves significant risks, uncertainties, assumptions, and other factors that could cause actual results, performance or achievements to differ materially from the results discussed or implied in the forward-looking information. These factors, including, but not limited to, fluctuations in currency markets, fluctuations in commodity prices, the ability of the Company to access sufficient capital on favourable terms or at all, changes in national and local government legislation, taxation, controls, regulations, political or economic developments in Australia or other countries in which the Company does business or may carry on business in the future, operational or technical difficulties in connection with exploration or development activities, employee relations, the speculative nature of mineral exploration and development, obtaining necessary licenses and permits, contests over title to properties, especially title to undeveloped properties, the inherent risks involved in the exploration and development of mineral properties, the uncertainties involved in interpreting drill results and other geological data, environmental hazards, industrial accidents, limitations of insurance coverage and the possibility of project cost overruns or unanticipated costs and expenses, and should be considered carefully.

Many of these uncertainties and contingencies can affect the Company's actual results and could cause actual results to differ materially from those expressed or implied in any forward-looking statements made by, or on behalf of, the Company. Prospective investors should not place undue





reliance on any forward-looking information. Although the forward-looking information contained on in this Announcement is based upon what management believes, or believed at the time, to be reasonable assumptions, the Company cannot assure prospective purchasers that actual results will be consistent with such forward-looking information, as there may be other factors that cause results not to be as anticipated, estimated or intended, and neither the Company nor any other person assumes responsibility for the accuracy and completeness of any such forward-looking information.

The Company does not undertake, and assumes no obligation, to update or revise any such forward-looking statements or forward-looking information contained herein to reflect new events or circumstances, except as may be required by law. No stock exchange, regulation services provider, securities commission or other regulatory authority has approved or disapproved the information contained in this Announcement.

