

10 July 2024

SOILS CONFIRM 5.5KM STRONG LITHIUM TREND AT KOBE SOUTH

Highlights

- **In-fill soil samples at Kobe South confirms persistent lithium soil trend over 5.5km strike**
- **Kobe South lithium trend reports peak assays of 200 – 467 ppm Li₂O in soils**
- **Osborne pegmatite cluster defined by large lithium soil footprint with peak assays of 300 – 712ppm Li₂O**
- **Kobe South trend is a western extension of the very strong lithium soil footprint associated with the Osborne pegmatite cluster**

GreenTech Metals Ltd (**ASX: GRE**), ('**GreenTech**' or 'the **Company**') is pleased to announce the results for an extensive infill soil sampling program comprising 1635 samples which aimed to build on the results of previously reported reconnaissance sampling undertaken in the region in 2018¹.

GreenTech's Executive Director, Tom Reddicliffe, commented: "We are pleased to see the persistence of well-defined lithium soil anomalies along strike at our Ruth Well and Osborne JV projects. These results are supported by the discovery of additional pathfinder elements which are consistent with other anomalies associated with a nearby lithium bearing pegmatite. It is also very encouraging that the tenor of the anomalies is similar to that of other soil anomalies associated with known lithium pegmatite occurrences in other parts of our project area. These results give us considerable confidence that GreenTech can continue to make further exciting lithium discoveries within the region."

Follow-up Soil Program

The follow-up in-fill soil program was focused on the Ruth Well and Osborne JV tenements (see Figure 1). The purpose of the program was to better define lithium soil anomalies which were highlighted in historic soil samples taken in 2018 by Artemis Resources (ASX:ARV). The historic samples had been taken on a 100m x 400m N-S grid while the follow-up soil program was merged with the original grid with samples taken on a 200m x 50m grid spacing. Exploration to date has highlighted the effectiveness of soil sampling in identifying both poorly exposed and outcrop of lithium pegmatite.

Kobe South

The Kobe South Lithium soil trend is southeast trending over a strike of 5.5km and varies in width from 300m up to 1km. The trend appears to stop in the northwest while in the southeast it is truncated by the tenement boundary. However, despite the strong and persistent lithium soil anomalism, no at surface pegmatite exposure has been identified suggesting that the structure may be recessive or poorly exposed. Kobe South is considered to likely represent a western extension to the Osborne cluster which is exposed at surface and located 3.4km to the east within the Osborne JV tenement E47/3719 (51% GRE / 49% ARV).

¹ Refer to GRE ASX Announcement 5 September 2023.

Kobe West

Kobe West represents the extreme western extension of the Kobe trend where a south westerly lithium soil trend has been defined with a strike of 700m and a width of 200m. Peak soil assays exceed 200ppm Li₂O. A recent ASX announcement by Accelerate Resources (AX8)² who hold the adjoining tenement reported strong lithium-caesium soil anomalism within their tenements located between the Kobe – Kobe West trend demonstrating that this lithium mineralised trend has a combined strike of at least 9.5km. While Kobe West has been defined by in-fill soil sampling on a 200m x 50m grid the main larger Kobe pegmatite trend has only been defined by soil sampling on a 400m x 100m sampling grid.

Osborne

The Osborne cluster of pegmatites is defined by a large associated anomalous lithium soil footprint which has a strike of ~4km and a width of up to 1.3km. The anomalous footprint eclipses the size of the observed pegmatite outcrop and indicates there is potentially more to be discovered at Osborne. The soils report a peak assay of 712ppm Li₂O and with numerous Li₂O assays greater than 300ppm. This in-fill sampling was undertaken on a 50m x 200m sampling grid.

Neither the peak soil nor rock chip assays³ are aligned with the mapped pegmatite occurrences (Figure 4) which may suggest there is more to be found within this pegmatite cluster as the spatial dislocation appears not to be related to topographical effects.

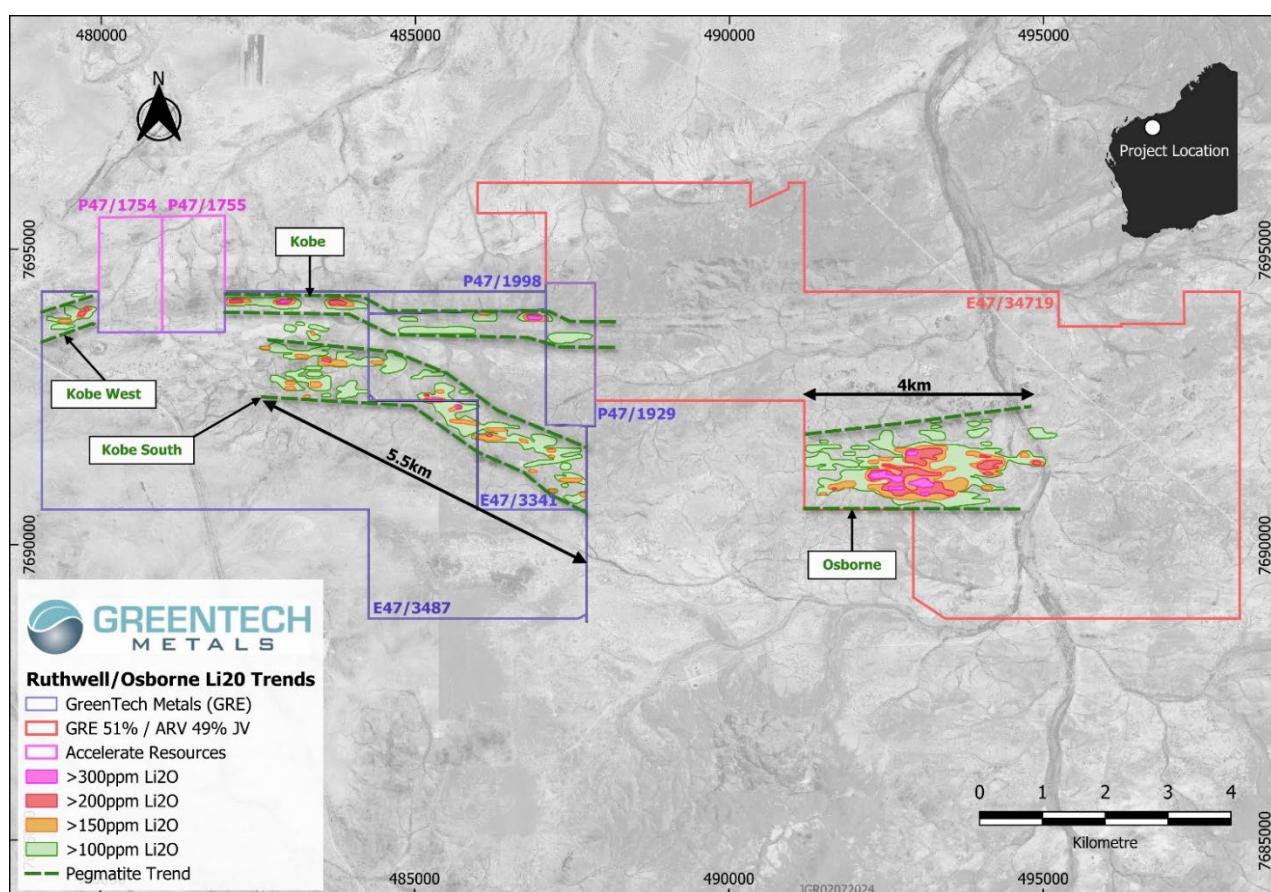


Figure 1: Kobe and Osborne Lithium Pegmatite and Soil Trends

² Refer to AX8 ASX Announcement 2 July 2024.

³ Refer to GRE ASX Announcement 5 October 2023.

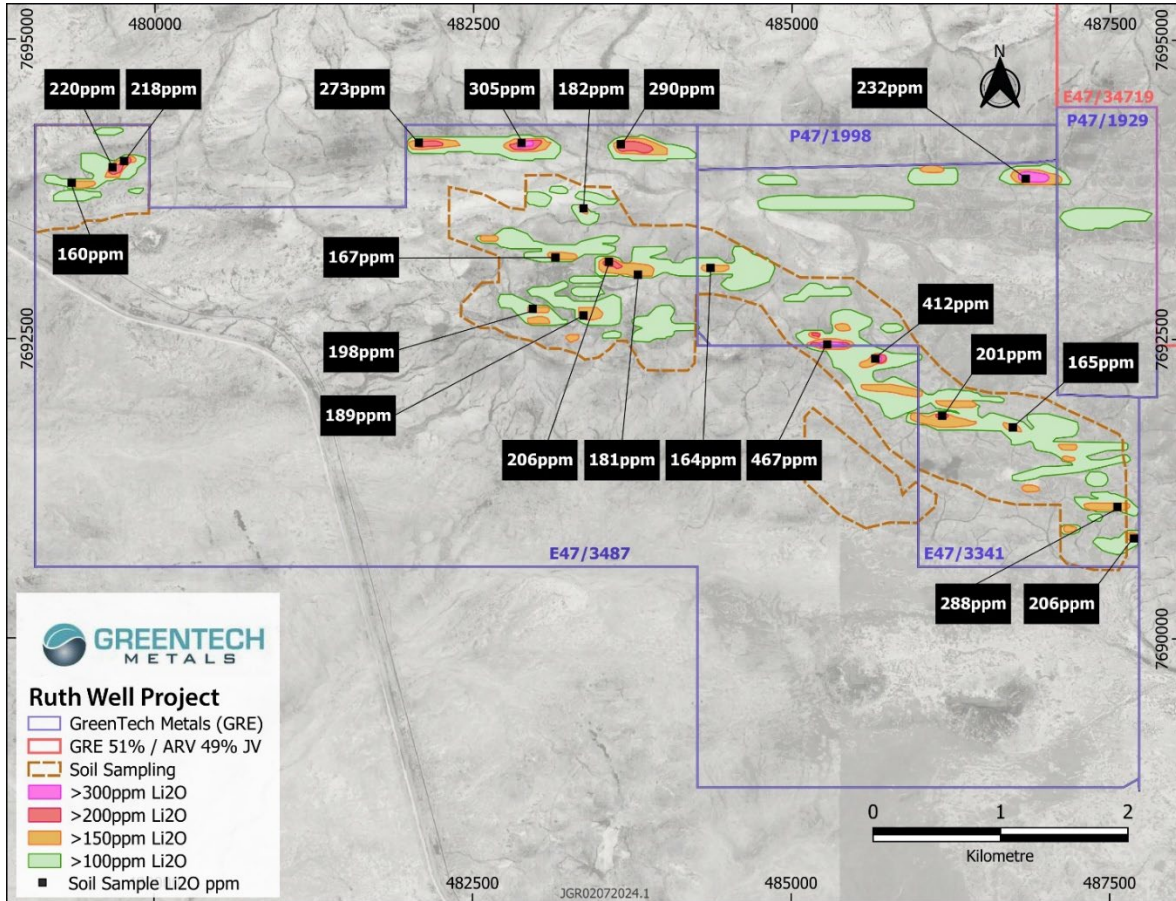


Figure 2: Kobe, Kobe West and Kobe South Lithium Soil Trends

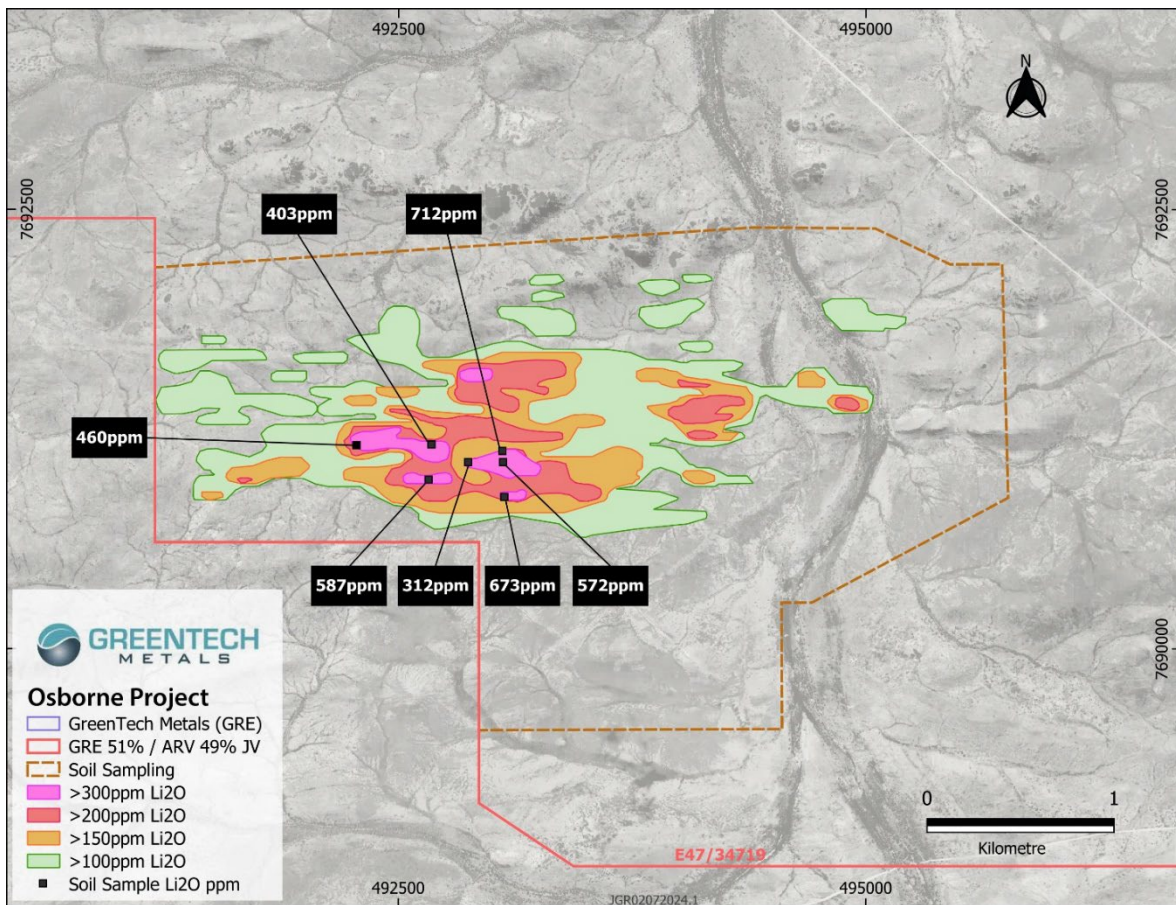


Figure 3: Osborne Lithium Soil Footprint

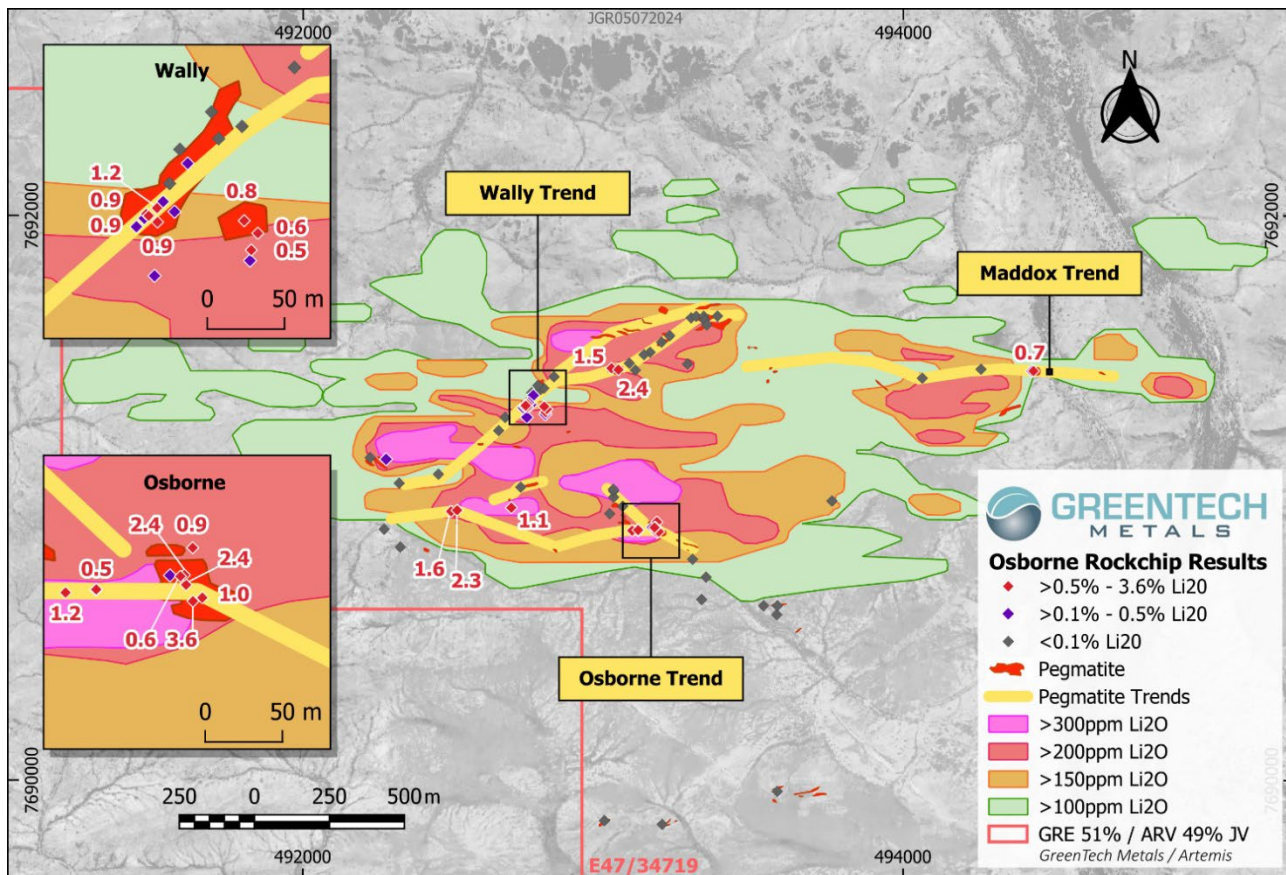


Figure 4: Lithium Soil Footprint Associated with Osborne Pegmatite Cluster

Next steps

These lithium soil trends are now sufficiently defined to allow initial drill testing of the higher-grade zones aimed at identifying associated pegmatite bodies. While some lithium soil trends have been partially cleared by previous heritage surveys, additional surveys are planned to ensure all targeted areas are covered.

This ASX announcement has been approved for release by the Board of GreenTech.

ENDS

For Further Information:

Mr Thomas Reddicliffe
Executive Director
GreenTech Metals Limited
+61 8 6261 5463
Info@greentechmetals.com

David Tasker
Media & Investor Relations
Chapter One Advisors
Ph: +61 433 112 936
E: dtasker@chapteroneadvisors.com.au

About GreenTech Metals Limited

The Company is an exploration and development company primarily established to discover, develop and acquire Australian and overseas projects containing minerals and metals that are used in the battery storage and electric vehicle sectors. The Company's founding projects are focused on the lithium, copper, nickel and cobalt potential within the West Pilbara and Fraser Range Provinces.

The green energy transition that is currently underway will require a substantial increase in the metals supply of these minerals and metals for the electrification of the global vehicle fleet and for the massive investment in the electrical grid and renewable energy infrastructure and storage.

Caution regarding Forward Looking Information

This document contains forward looking statements concerning GreenTech Metals Limited. Forward looking statements are not statements of historical fact and actual events and results may differ materially from those described in the forward-looking statements as a result of a variety of risks, uncertainties and other factors. Forward looking statements in this document are based on GreenTech's beliefs, opinions and estimates as of the dates the forward-looking statements are made, and no obligation is assumed to update forward looking statements if these beliefs, opinions or estimates should change or to reflect other future developments.

Competent Person Statement

Thomas Reddicliffe, BSc (Hons), MSc, a Director and Shareholder of the Company, is a Fellow of the AUSIMM, and has sufficient experience which is relevant to the style of mineralisation and type of deposit under consideration to qualify as a Competent Person as defined in the 2012 edition of the 'Australasian Code for Reporting of Exploration Results, Mineral Resources and Ore Reserves'. Thomas Reddicliffe consents to the inclusion in the report of the information in the form and context in which it appears.

ASX Announcements referred to in this report:

- ¹ New Lithium Targets at Ruth Well and Osborne JV in WA 5 September 2023 (ASX:GRE).
- ² Karratha Lithium Project Expands Target Areas 2 July 2024 (ASX:AX8).
- ³ More High Grade Lithium Assays at Osborne JV including 2.4% Li₂O 5 October 2023(ASX:GRE).

Table 1: Sample Assays with Li₂O > 100ppm

Sample Id	Tenement	Easting	Northing	Lippm	Li2O_ppm	Csppm	Nbppm	Rbppm	Snppm	Tappm
24GT02-010	E 47/3719	491399	7691801	51.5	110.88	4.67	6.98	59.1	1.14	0.72
24GT02-011	E 47/3719	491399	7691748	54.3	116.91	3.52	5.49	46	0.95	0.54
24GT02-014	E 47/3719	491404	7691598	54.9	118.20	4.21	6.91	69	1.55	0.66
24GT02-015	E 47/3719	491396	7691551	61.4	132.19	4.56	8.81	77.2	1.84	0.78
24GT02-016	E 47/3719	491399	7691500	48.2	103.77	3.97	7.89	78.7	1.72	0.69
24GT02-028	E 47/3719	491397	7690899	52.1	112.17	5.08	13	105	2.12	1.08
24GT02-029	E 47/3719	491404	7690850	48.7	104.85	6.91	12.9	127.5	2.44	1.06
24GT02-030	E 47/3719	491400	7690800	87.5	188.39	8.85	12.1	114	2.45	1.67
24GT02-038	E 47/3719	491603	7691901	55.2	118.85	8.48	4.79	36.6	0.97	0.47
24GT02-042	E 47/3719	491599	7691699	47.4	102.05	4.07	7.59	55.2	1.28	0.74
24GT02-043	E 47/3719	491599	7691649	65.5	141.02	4.94	8.72	73.7	1.62	0.89
24GT02-044	E 47/3719	491596	7691605	53.5	115.19	10.1	8.67	125	1.7	0.75
24GT02-045	E 47/3719	491596	7691560	46.9	100.98	4.75	8.83	87.2	2.04	0.87
24GT02-047	E 47/3719	491599	7691449	47	101.19	4.99	8.01	88.6	1.62	0.72
24GT02-051	E 47/3719	491599	7691249	51	109.80	4.4	9.18	86.9	1.38	0.69
24GT02-052	E 47/3719	491599	7691199	53.5	115.19	5.16	12.2	98.5	1.82	1.52
24GT02-054	E 47/3719	491599	7691106	48.5	104.42	7.65	12.2	106.5	3.43	1.12
24GT02-055	E 47/3719	491599	7691049	49.4	106.36	7.79	12.7	144	2.1	1.4
24GT02-056	E 47/3719	491599	7690999	74.9	161.26	7.64	7.56	139	1.58	0.85
24GT02-071	E 47/3719	491800	7691798	57.8	124.44	5.28	3.51	45.5	0.68	0.3
24GT02-076	E 47/3719	491799	7691557	54.1	116.48	3.87	8.5	62.1	1.42	0.76
24GT02-078	E 47/3719	491802	7691449	49.9	107.43	4.06	9.58	72.8	1.56	0.94
24GT02-083	E 47/3719	491799	7691199	58.4	125.74	5.4	9.38	92.9	1.68	0.91
24GT02-084	E 47/3719	491797	7691149	75.2	161.91	6.35	10.6	123.5	2.26	1.56
24GT02-085	E 47/3719	491797	7691092	112	241.14	11.8	13.05	227	2.88	2.12
24GT02-104	E 47/3719	491997	7691696	69	148.56	4.26	8.31	82.2	1.48	0.75
24GT02-107	E 47/3719	492005	7691554	59.1	127.24	4.48	8.43	75.6	1.54	0.75
24GT02-108	E 47/3719	491999	7691495	65	139.95	4.15	8.15	71.3	1.51	0.66
24GT02-110	E 47/3719	491999	7691399	50.6	108.94	4.16	8.11	79	1.63	0.94
24GT02-111	E 47/3719	492000	7691348	55.4	119.28	5.07	7.95	100.5	1.53	1.02
24GT02-112	E 47/3719	491999	7691297	54.1	116.48	7.99	10.75	153	2.07	1.44
24GT02-113	E 47/3719	491996	7691253	63	135.64	4.55	9.97	87.4	2.99	2.52
24GT02-114	E 47/3719	492000	7691197	79.4	170.95	4.71	8.97	97.1	1.92	1.29
24GT02-115	E 47/3719	491993	7691152	82.8	178.27	5.83	20.3	137	2.51	5.49
24GT02-122	E 47/3719	491996	7690793	88.3	190.11	4.47	9.32	131	2.43	1.35
24GT02-133	E 47/3719	492203	7691797	60.9	131.12	4.06	5.12	46.5	0.92	0.56
24GT02-137	E 47/3719	492199	7691599	51.1	110.02	4.86	8.17	88.4	1.6	0.85
24GT02-139	E 47/3719	492199	7691499	47	101.19	6.16	9.05	85.8	1.76	1.2
24GT02-141	E 47/3719	492199	7691399	53.2	114.54	5.31	8	87.1	1.72	0.78
24GT02-143	E 47/3719	492199	7691299	59.6	128.32	3.38	6.29	51.4	1.09	0.69
24GT02-145	E 47/3719	492198	7691202	63.6	136.93	4.6	13.95	115	1.97	4.44
24GT02-146	E 47/3719	492199	7691149	56.8	122.29	6.03	12.65	142	2.74	2.26
24GT02-147	E 47/3719	492199	7691099	54.3	116.91	13.55	14.15	255	3.53	6.51
24GT02-152	E 47/3719	492208	7690850	88.1	189.68	21.9	15.1	94.6	1.87	1.5
24GT02-153	E 47/3719	492200	7690794	73.8	158.89	7.17	12.25	145	5.88	2.76
24GT02-162	E 47/3719	492399	7691899	52	111.96	6.88	7.75	46.4	1.15	1.25
24GT02-167	E 47/3719	492401	7691650	57.3	123.37	4.86	8.43	75.6	1.53	0.75
24GT02-168	E 47/3719	492400	7691597	55.8	120.14	6.19	6.69	56.9	1.12	0.65
24GT02-169	E 47/3719	492399	7691549	78.9	169.87	3.6	8.38	53.8	1.41	0.88
24GT02-170	E 47/3719	492399	7691499	59.9	128.96	2.97	5.37	34.4	0.82	0.55
24GT02-172	E 47/3719	492398	7691399	98.7	212.50	5.98	6.92	57.7	1.46	1
24GT02-173	E 47/3719	492399	7691349	177	381.08	5.88	4.37	81.4	1.04	1.06
24GT02-174	E 47/3719	492398	7691297	214	460.74	13	33.2	586	7.28	16.65
24GT02-175	E 47/3719	492399	7691249	112.5	242.21	6.83	13.3	124	4.05	4.79
24GT02-176	E 47/3719	492399	7691199	67.8	145.97	8.16	13.95	163	3.88	3.15
24GT02-177	E 47/3719	492399	7691149	89.1	191.83	12.3	11.05	96.2	2.13	2.03
24GT02-178	E 47/3719	492399	7691099	78.1	168.15	9.3	11.1	89	1.87	1.8
24GT02-182	E 47/3719	492399	7690899	55.8	120.14	5.06	8.74	153.5	2.02	1.64
24GT02-191	E 47/3719	492595	7692051	50.6	108.94	5.08	9.35	57.3	1.24	0.88
24GT02-192	E 47/3719	492599	7691999	57	122.72	5.44	10.15	85.4	1.63	0.91
24GT02-193	E 47/3719	492600	7691955	52.7	113.46	4.3	8.05	71.2	1.34	0.66
24GT02-194	E 47/3719	492599	7691899	55.4	119.28	4.01	5.27	36.8	1.17	0.48
24GT02-195	E 47/3719	492599	7691849	53.1	114.32	4.02	6.59	49.4	1.05	0.64

Sample Id	Tenement	Easting	Northing	Lippm	Li20_ppm	Csppm	Nbppm	Rbppm	Snppm	Tappm
24GT02-196	E 47/3719	492596	7691797	75.1	161.69	4.33	6.63	70.6	1.16	0.65
24GT02-200	E 47/3719	492599	7691599	94	202.38	3.6	8.12	67.5	1.1	1.13
24GT02-202	E 47/3719	492599	7691496	95.5	205.61	17.75	10.75	89.7	1.71	1.14
24GT02-203	E 47/3719	492600	7691447	73.8	158.89	4.56	9	70.1	1.94	0.76
24GT02-204	E 47/3719	492599	7691399	146.5	315.41	6.53	5.63	119.5	2.64	1.44
24GT02-205	E 47/3719	492599	7691348	105	226.07	4.96	6.03	69.2	1.07	1.55
24GT02-206	E 47/3719	492601	7691300	158.5	341.25	6.78	5.4	101	1.37	1.32
24GT02-208	E 47/3719	492598	7691200	67	144.25	17.35	8.95	97.2	1.8	2.11
24GT02-209	E 47/3719	492600	7691149	129.5	278.81	16.2	5.83	67.3	1.32	0.78
24GT02-210	E 47/3719	492598	7691098	138.5	298.19	12.45	27.4	360	5.23	13.9
24GT02-211	E 47/3719	492602	7691050	92.6	199.37	13.3	16.55	258	3.66	4.79
24GT02-212	E 47/3719	492599	7690998	88	189.46	14.3	17.75	281	3.9	5.74
24GT02-222	E 47/3719	492800	7692102	47.7	102.70	4.42	4.11	45	0.73	0.37
24GT02-225	E 47/3719	492799	7691950	46.9	100.98	3.89	5.96	41.7	1.05	0.5
24GT02-232	E 47/3719	492800	7691600	66.5	143.17	5.46	9.29	92.7	2.6	1.34
24GT02-233	E 47/3719	492803	7691551	56.1	120.78	6.25	11.35	106	2.08	1.1
24GT02-234	E 47/3719	492800	7691500	61.2	131.76	3.93	9.92	85.9	2.08	1
24GT02-235	E 47/3719	492800	7691450	127.5	274.51	5.41	6.49	97.9	2.11	5.33
24GT02-236	E 47/3719	492800	7691400	56.4	121.43	3.78	7.43	43.7	1.87	2.87
24GT02-237	E 47/3719	492800	7691350	71.3	153.51	5.86	7.13	48.5	1.86	6.84
24GT02-238	E 47/3719	492800	7691300	187.5	403.69	22.9	4.83	49.1	1.92	1.12
24GT02-239	E 47/3719	492800	7691250	140	301.42	20.3	3.95	36.4	1.15	0.4
24GT02-240	E 47/3719	492800	7691200	138	297.11	7.45	10.05	72.2	2.84	2.11
24GT02-241	E 47/3719	492800	7691150	97.5	209.92	5.36	8.2	87.6	2.41	0.83
24GT02-242	E 47/3719	492800	7691100	273	587.77	24	4.93	111	2.42	1.16
24GT02-243	E 47/3719	492800	7691050	130	279.89	24.6	11.25	187	3.41	2.59
24GT02-244	E 47/3719	492800	7691000	116	249.75	10.25	13.25	149	2.86	4.47
24GT02-245	E 47/3719	492800	7690950	75.3	162.12	8.12	12.2	183	2.7	3.22
24GT02-246	E 47/3719	492800	7690900	69.6	149.85	7.69	24.8	174.5	2.86	9.3
24GT02-247	E 47/3719	492800	7690850	47.8	102.91	9.42	13	229	2.5	3.47
24GT02-260	E 47/3719	492996	7691798	56.3	121.21	4.62	5.19	46.9	1.36	0.78
24GT02-261	E 47/3719	493000	7691748	134	288.50	5.43	5.37	95.2	1.64	0.81
24GT02-262	E 47/3719	493000	7691703	158	340.17	7.41	6.04	137	2.12	4.49
24GT02-263	E 47/3719	493002	7691654	112	241.14	5.94	10	108.5	3.33	1.69
24GT02-264	E 47/3719	493001	7691607	119.5	257.28	7.37	8.87	123.5	3.25	2.2
24GT02-265	E 47/3719	492997	7691553	104.5	224.99	5.57	8.89	98.4	4.42	1.09
24GT02-266	E 47/3719	493003	7691500	47.7	102.70	6.48	7.32	50.8	1.5	0.76
24GT02-267	E 47/3719	493001	7691453	117.5	252.98	31	6.42	91.3	1.96	3.27
24GT02-268	E 47/3719	492999	7691402	102.5	220.68	11	11.2	90.1	2.52	1.14
24GT02-269	E 47/3719	493000	7691349	105	226.07	6.19	8.48	90.4	2.15	1.31
24GT02-270	E 47/3719	493001	7691297	79.9	172.02	8.13	9	89.8	2.34	1.74
24GT02-271	E 47/3719	493000	7691250	71.3	153.51	6.79	6.96	79.6	1.82	1.42
24GT02-272	E 47/3719	493000	7691202	331	712.64	7.47	4.82	170	1.36	0.51
24GT02-275	E 47/3719	492998	7691049	132	284.20	14.15	9.32	121.5	6.1	1.28
24GT02-276	E 47/3719	492998	7691002	70.8	152.43	8.85	20.2	124	4.28	13.2
24GT02-277	E 47/3719	493002	7690948	91.7	197.43	11.1	15.45	202	3.73	6.96
24GT02-278	E 47/3719	492999	7690900	68.5	147.48	10.85	17.05	166.5	3.84	7.36
24GT02-280	E 47/3719	493006	7690801	47.2	101.62	6.77	11.75	228	2.79	2.74
24GT02-288	E 47/3719	493202	7692058	60.4	130.04	2.91	7.68	21	1.04	0.79
24GT02-292	E 47/3719	493200	7691850	58.6	126.17	6.32	9.78	83.6	1.96	5.71
24GT02-293	E 47/3719	493201	7691799	80.8	173.96	5.32	7.95	109	2.05	2.46
24GT02-294	E 47/3719	493199	7691752	111.5	240.06	8.64	9.97	149.5	4.83	3.34
24GT02-295	E 47/3719	493200	7691701	107	230.37	7.9	13.05	168.5	3.42	4.25
24GT02-296	E 47/3719	493198	7691649	104	223.91	11.7	16.3	274	6.81	27.3
24GT02-297	E 47/3719	493200	7691600	72.5	156.09	7.57	7.72	58.8	1.86	2.78
24GT02-298	E 47/3719	493198	7691552	127.5	274.51	16.6	7.92	82.9	3.32	1.78
24GT02-299	E 47/3719	493200	7691500	97.8	210.56	9.77	11.55	69.9	2.41	1.51
24GT02-300	E 47/3719	493200	7691447	90.1	193.99	9.36	11.25	66.5	2.01	1.72
24GT02-301	E 47/3719	493200	7691400	113	243.29	4.62	8.79	54.2	1.46	2.78
24GT02-302	E 47/3719	493200	7691350	99.3	213.79	33.4	8.55	60	1.74	1.82
24GT02-303	E 47/3719	493200	7691300	84.8	182.57	16.1	9.48	114	2.94	3.13
24GT02-304	E 47/3719	493200	7691250	266	572.70	7.88	6.17	140	1.37	1.33
24GT02-305	E 47/3719	493200	7691199	313	673.89	7.54	4.73	146.5	2.19	0.65
24GT02-306	E 47/3719	493200	7691150	151.5	326.18	13.7	15.65	137.5	4.52	11.7
24GT02-307	E 47/3719	493200	7691098	101.5	218.53	40	42.4	329	10.5	41.1

Sample Id	Tenement	Easting	Northing	Lippm	Li20_ppm	Csppm	Nbppm	Rbppm	Snppm	Tappm
24GT02-308	E 47/3719	493200	7691050	131	282.04	44	10.5	251	3.56	3.59
24GT02-309	E 47/3719	493200	7691000	145	312.19	14.4	14.45	143	3.79	8.39
24GT02-310	E 47/3719	493199	7690950	72.5	156.09	7.55	16.6	152.5	2.66	4.48
24GT02-331	E 47/3719	493200	7689900	132.5	285.27	4.57	10.2	193.5	2.69	1.51
24GT02-333	E 47/3719	493200	7689800	55.6	119.71	3.95	7.63	102	1.98	0.86
24GT02-338	E 47/3719	493399	7692249	51.3	110.45	3.65	4.96	42.9	0.87	0.43
24GT02-340	E 47/3719	493399	7692149	51.7	111.31	3.19	4.02	34.2	0.81	0.37
24GT02-342	E 47/3719	493399	7692049	59.2	127.46	6.5	6.2	65.9	1.21	0.71
24GT02-343	E 47/3719	493399	7691999	52.5	113.03	8.48	7.17	52.1	1.1	0.89
24GT02-344	E 47/3719	493399	7691949	52.5	113.03	12.15	7.36	60.3	1.54	6.28
24GT02-347	E 47/3719	493399	7691799	83.5	179.78	5.78	8.89	94.7	2.07	1.85
24GT02-348	E 47/3719	493399	7691749	101.5	218.53	6.76	9.62	158.5	2.27	2.24
24GT02-349	E 47/3719	493399	7691699	97.3	209.49	8.18	10	168.5	3.05	1.9
24GT02-350	E 47/3719	493399	7691649	79	170.09	7.56	12.05	144.5	2.95	7.51
24GT02-351	E 47/3719	493399	7691599	101.5	218.53	7.96	21.4	92.2	2.94	14.45
24GT02-352	E 47/3719	493399	7691549	64.3	138.44	7.34	11.7	116	2.15	4.02
24GT02-353	E 47/3719	493399	7691499	73.1	157.38	8.69	10.2	88.9	1.9	1.87
24GT02-355	E 47/3719	493399	7691399	78.2	168.36	7.58	10.8	84.7	1.78	6.92
24GT02-356	E 47/3719	493399	7691349	103	221.76	9.24	9.46	92.4	2.16	3.11
24GT02-357	E 47/3719	493399	7691299	79.1	170.30	6.54	10.7	87.3	1.36	3.08
24GT02-358	E 47/3719	493399	7691249	64.3	138.44	5.12	9.29	63.5	1.28	0.9
24GT02-359	E 47/3719	493399	7691199	124.5	268.05	6.45	5.57	74.3	0.99	0.75
24GT02-360	E 47/3719	493399	7691149	100.5	216.38	5.79	4.66	62.6	1	0.64
24GT02-361	E 47/3719	493399	7691099	137.5	296.04	5.75	4.4	91.1	0.87	0.58
24GT02-362	E 47/3719	493399	7691049	105.5	227.14	8.24	9.05	81	2.22	1.8
24GT02-363	E 47/3719	493399	7690999	90.6	195.06	7.36	11.4	106.5	2.21	1.5
24GT02-364	E 47/3719	493399	7690949	173	372.47	10.7	7.72	200	2.64	1.75
24GT02-365	E 47/3719	493399	7690899	48.8	105.07	8.57	10.6	228	2.21	2.08
24GT02-377	E 47/3719	493396	7690300	72.4	155.88	20.2	16.4	518	4.46	1.76
24GT02-378	E 47/3719	493399	7690249	72.3	155.66	6.76	14.5	252	3.04	1.61
24GT02-379	E 47/3719	493399	7690199	56.4	121.43	5.78	12.4	194	2.18	1.26
24GT02-383	E 47/3719	493399	7689999	47	101.19	4.33	15.3	150	3.97	3.04
24GT02-384	E 47/3719	493399	7689949	49.2	105.93	5.49	13.6	214	3.76	2.71
24GT02-387	E 47/3719	493399	7689799	51.9	111.74	4.17	9.42	147.5	3.16	2.14
24GT02-401	E 47/3719	493599	7691799	68.6	147.70	5.54	8.82	72.6	2.3	1.8
24GT02-402	E 47/3719	493599	7691749	51.4	110.66	4.83	12.4	77.4	3.05	2.04
24GT02-404	E 47/3719	493599	7691649	63	135.64	6.55	11	129	3.38	6.6
24GT02-405	E 47/3719	493599	7691599	53.5	115.19	6.46	11.25	94.6	1.82	3.18
24GT02-406	E 47/3719	493599	7691549	55.1	118.63	10.3	12	100.5	2.03	3.29
24GT02-407	E 47/3719	493599	7691499	60.6	130.47	6.41	10.8	115.5	2.29	5.77
24GT02-408	E 47/3719	493599	7691449	89.2	192.05	10.45	10.25	95.1	2.02	3.06
24GT02-409	E 47/3719	493599	7691399	67.9	146.19	8.84	8.52	81.8	1.38	2.9
24GT02-412	E 47/3719	493599	7691249	55	118.42	5.41	10.2	61.2	1.21	0.85
24GT02-413	E 47/3719	493599	7691199	86	185.16	5.95	8.7	73.7	0.88	1.35
24GT02-414	E 47/3719	493599	7691149	81.2	174.82	4.83	4.53	60	0.96	0.86
24GT02-415	E 47/3719	493599	7691099	84.5	181.93	4.29	4.54	52.9	0.95	0.77
24GT02-416	E 47/3719	493599	7691049	93.9	202.17	5.7	3.37	58.7	0.69	0.42
24GT02-417	E 47/3719	493599	7690999	103.5	222.84	6.29	3.29	101	0.87	0.38
24GT02-418	E 47/3719	493599	7690949	60.5	130.26	8.96	10.35	90.1	1.87	1.1
24GT02-419	E 47/3719	493599	7690899	73.5	158.25	7.77	11.8	126.5	2.87	1.97
24GT02-420	E 47/3719	493597	7690852	57.4	123.58	6.53	13.4	107	2.04	3.31
24GT02-421	E 47/3719	493602	7690803	55.7	119.92	11.7	17.4	275	4.54	3.47
24GT02-434	E 47/3719	493599	7690149	62.4	134.35	5.19	11.45	178.5	2.46	1.47
24GT02-456	E 47/3719	493799	7691799	51.2	110.23	59.3	9.26	113	1.26	1.12
24GT02-457	E 47/3719	493799	7691749	55.8	120.14	9.15	9.6	44.9	1.74	1.08
24GT02-458	E 47/3719	493799	7691699	68.6	147.70	6.46	11.15	77.6	2.17	2.65
24GT02-460	E 47/3719	493799	7691599	85.4	183.87	20.9	7.94	94.6	1.72	1.44
24GT02-461	E 47/3719	493797	7691556	71.5	153.94	7.19	22.1	112	3.2	30.6
24GT02-462	E 47/3719	493799	7691499	56.3	121.21	7.51	6.98	62.4	1.24	0.73
24GT02-463	E 47/3719	493799	7691449	59.5	128.10	12.6	7.11	72.9	1.28	0.85
24GT02-464	E 47/3719	493799	7691399	52.4	112.82	5.52	6.79	67.7	1.22	0.84
24GT02-465	E 47/3719	493799	7691349	48.8	105.07	5.09	7.63	66.6	1.04	1.12
24GT02-466	E 47/3719	493799	7691299	51.8	111.53	4.86	8.46	55.8	1.4	0.88
24GT02-467	E 47/3719	493798	7691258	85.7	184.51	4.88	4.69	50.6	1.14	0.51
24GT02-468	E 47/3719	493799	7691199	71.9	154.80	7.09	5.42	77.8	0.89	0.67

Sample Id	Tenement	Easting	Northing	Lippm	Li20_ppm	Csppm	Nbppm	Rbppm	Snppm	Tappm
24GT02-469	E 47/3719	493799	7691149	90.2	194.20	5.51	4.21	55.3	0.86	0.55
24GT02-470	E 47/3719	493799	7691099	88.1	189.68	6.86	5.84	70.2	1	0.72
24GT02-472	E 47/3719	493799	7690999	49.8	107.22	5.09	9.96	93.8	1.75	1.51
24GT02-473	E 47/3719	493799	7690949	58.1	125.09	4.24	10.7	82.7	2.83	0.99
24GT02-474	E 47/3719	493799	7690899	94.8	204.10	5.64	9.25	126	3.18	0.88
24GT02-475	E 47/3719	493799	7690849	69.6	149.85	6.47	11.7	122	2.8	3.06
24GT02-487	E 47/3719	493799	7690249	62	133.49	4.19	12.5	183	3.58	3.18
24GT02-489	E 47/3719	493799	7690149	83	178.70	5.43	9.17	198.5	2.9	1.69
24GT02-490	E 47/3719	493799	7690099	50.5	108.73	3.28	8.85	90.9	2.42	1.02
24GT02-491	E 47/3719	493799	7690049	84.8	182.57	5.5	9.4	112	2.63	1.96
24GT02-503	E 47/3719	493999	7692199	56.3	121.21	4.12	6.46	70.6	1.29	0.71
24GT02-506	E 47/3719	493999	7692049	58.7	126.38	4.22	4.83	33.7	1.02	0.78
24GT02-507	E 47/3719	493999	7691999	51.7	111.31	5.4	5.02	34.7	0.86	0.44
24GT02-512	E 47/3719	493999	7691749	50.8	109.37	9.26	10.9	76.1	1.61	2.35
24GT02-513	E 47/3719	493992	7691700	82	176.55	8.93	12	93.8	2.49	8.25
24GT02-514	E 47/3719	493999	7691649	53.8	115.83	6.36	10.3	92.1	3.69	1.89
24GT02-515	E 47/3719	493999	7691599	68.6	147.70	11.55	10.05	92.2	3.3	2.16
24GT02-516	E 47/3719	493999	7691549	56.4	121.43	8.01	5.75	42.4	1.28	0.9
24GT02-517	E 47/3719	493999	7691499	92.8	199.80	6.16	6.02	75.6	1.09	0.8
24GT02-518	E 47/3719	493999	7691449	65.6	141.24	26.3	11.9	86.6	1.44	0.98
24GT02-519	E 47/3719	493999	7691399	49.4	106.36	12.45	10.55	104.5	1.34	1.11
24GT02-520	E 47/3719	493997	7691349	47.3	101.84	4.78	7.32	64.4	0.94	0.73
24GT02-522	E 47/3719	493999	7691249	52.3	112.60	6.62	7.7	65.7	1.15	0.64
24GT02-523	E 47/3719	493999	7691199	62.8	135.21	6.38	8.01	63.2	1.16	0.7
24GT02-527	E 47/3719	493999	7690999	61.4	132.19	5.74	10.45	82.7	1.8	1.71
24GT02-529	E 47/3719	493999	7690899	79.6	171.38	6.64	12.4	88.7	2.35	2.09
24GT02-530	E 47/3719	493999	7690849	59.2	127.46	6.13	11.5	165.5	2.98	4.02
24GT02-557	E 47/3719	494199	7692249	55.6	119.71	3.96	5.79	39.9	1.31	0.6
24GT02-560	E 47/3719	494201	7692103	47.3	101.84	4.73	7.51	48.5	1.17	2.89
24GT02-565	E 47/3719	494195	7691860	52.1	112.17	11.1	8.68	72.5	1.87	7.7
24GT02-567	E 47/3719	494199	7691758	52.6	113.25	6	6.6	65.4	1.27	1.32
24GT02-568	E 47/3719	494195	7691699	66.5	143.17	5.51	8.02	96.1	1.72	1.5
24GT02-569	E 47/3719	494193	7691644	104.5	224.99	8.37	10.1	135.5	2.91	3.65
24GT02-570	E 47/3719	494199	7691599	67.5	145.33	6.53	9.18	128	2.63	2.81
24GT02-571	E 47/3719	494199	7691544	113	243.29	12.35	5.91	55.1	1.47	1.03
24GT02-572	E 47/3719	494191	7691496	208	447.82	159	5.87	198.5	3.61	0.58
24GT02-573	E 47/3719	494199	7691452	122	262.67	13.3	6.06	41.1	1.34	0.86
24GT02-574	E 47/3719	494201	7691399	72.8	156.74	5.69	6.28	54.6	1.49	0.84
24GT02-575	E 47/3719	494195	7691355	112.5	242.21	5.06	6.61	62.2	1.76	1.03
24GT02-576	E 47/3719	494191	7691306	59.4	127.89	6.44	8.5	82.9	1.6	1.34
24GT02-579	E 47/3719	494206	7691147	77.2	166.21	7.08	9.61	129.5	1.5	1.2
24GT02-580	E 47/3719	494203	7691104	96.1	206.90	4.88	8.35	76.4	1.63	0.76
24GT02-584	E 47/3719	494200	7690897	51.1	110.02	6.77	22.5	169	4.6	3.02
24GT02-586	E 47/3719	494201	7690798	46.6	100.33	8.97	12.3	203	3.67	1.7
24GT02-601	E 47/3719	494198	7690047	49.3	106.14	3.08	11.8	100	4.18	1.76
24GT02-602	E 47/3719	494197	7689997	53.9	116.05	4.04	18.85	181	8.44	5.64
24GT02-622	E 47/3719	494399	7691749	54.4	117.12	5.52	7.37	72.6	1.42	0.68
24GT02-624	E 47/3719	494399	7691649	63	135.64	6.48	8.39	103	1.43	1.84
24GT02-625	E 47/3719	494399	7691599	83.3	179.34	8.72	7.68	79.4	1.32	2.12
24GT02-626	E 47/3719	494401	7691552	113.5	244.37	6.18	6.42	66.5	1.15	0.58
24GT02-627	E 47/3719	494399	7691499	83.5	179.78	5.29	8.06	64.5	1.81	0.79
24GT02-628	E 47/3719	494399	7691449	157	338.02	4.39	5.3	54.1	0.9	0.46
24GT02-630	E 47/3719	494399	7691349	86.3	185.80	6.19	6.59	87.1	1.4	0.62
24GT02-635	E 47/3719	494396	7691103	46.5	100.11	5.05	12.25	223	3.16	1.22
24GT02-681	E 47/3719	494596	7691596	47.2	101.62	3.79	6.94	80.8	1.29	1.06
24GT02-693	E 47/3719	494599	7690999	47	101.19	5.07	21.3	68.1	2.53	1.53
24GT02-715	E 47/3719	494599	7689899	61.3	131.98	5.62	9.01	115	2.27	1.74
24GT02-735	E 47/3719	494800	7691697	71.4	153.72	6.69	5.13	84.3	1.85	0.57
24GT02-736	E 47/3719	494801	7691649	70.1	150.93	7.13	6.91	66.7	2.48	0.78
24GT02-737	E 47/3719	494799	7691598	57.3	123.37	3.91	6.24	57.4	2.01	0.87
24GT02-738	E 47/3719	494798	7691548	51.7	111.31	6.28	11.7	120.5	2.36	0.99
24GT02-752	E 47/3719	494799	7690851	47.2	101.62	8.28	18.25	296	4	2.97
24GT02-769	E 47/3719	495001	7692059	51.5	110.88	3.35	9.08	62	1.48	0.8
24GT02-770	E 47/3719	495004	7691998	46.7	100.55	3.8	7.5	55.9	1.28	0.59
24GT02-778	E 47/3719	494999	7691599	49.4	106.36	4.68	9.21	84.3	1.38	0.96

Sample Id	Tenement	Easting	Northing	Lippm	Li20_ppm	Csppm	Nbppm	Rbppm	Snppm	Tappm
24GT02-779	E 47/3719	494999	7691548	92.5	199.15	7.02	7.98	93.6	1.71	1.07
24GT02-780	E 47/3719	494998	7691504	124.5	268.05	6.23	8.33	85.7	1.59	0.84
24GT02-808	E 47/3719	495199	7691999	73.1	157.38	6.13	6.68	83.4	1.18	0.57
24GT02-848	E 47/3719	495399	7691649	62.6	134.78	6.56	6.67	68.9	1.21	0.63
24GT02-854	E 47/3719	495401	7691347	48.3	103.99	5.5	14.4	51.4	1.63	1.04
24GT02-860	E 47/3719	495399	7691049	65.5	141.02	12.05	24.1	364	6.73	3.59
24GT02-893	E 47/3719	495803	7692203	53.8	115.83	5.45	6.71	66.1	1.58	0.58
24GT04-017	E 47/3487	482700	7693501	78	167.93	12.05	5.22	21.1	0.75	0.39
24GT04-028	E 47/3487	482900	7693651	62.7	134.99	5.83	7	39.6	1.13	0.68
24GT04-030	E 47/3487	482899	7693550	63.2	136.07	4.62	7.63	33.4	1.04	0.72
24GT04-031	E 47/3487	482899	7693503	46.9	100.98	15.45	6	28.8	1.26	0.47
24GT04-032	E 47/3487	482899	7693451	54.8	117.98	11.85	7.73	30.5	1.13	0.62
24GT04-041	E 47/3487	482900	7693000	69.4	149.42	9.43	9.88	44.2	1.45	0.7
24GT04-042	E 47/3487	482896	7692949	62.8	135.21	14.25	8.2	63.2	1.42	0.64
24GT04-050	E 47/3487	483099	7693849	57.5	123.80	2.77	5.37	30.2	1	0.65
24GT04-051	E 47/3487	483098	7693800	56.7	122.08	3.39	5.08	23.5	0.74	0.56
24GT04-054	E 47/3487	483099	7693649	46.5	100.11	4.03	7.61	32.3	1.38	0.57
24GT04-058	E 47/3487	483099	7693449	48.8	105.07	6.49	8.33	42.3	1.43	0.65
24GT04-060	E 47/3487	483101	7693350	47.7	102.70	4.01	5.96	37.1	1.05	0.63
24GT04-066	E 47/3487	483100	7693050	49.6	106.79	3.62	6.42	49.1	1.22	0.49
24GT04-069	E 47/3487	483100	7692900	92	198.08	19.1	6.42	47.9	1.34	0.52
24GT04-071	E 47/3487	483098	7692799	88.8	191.19	7.17	8.45	72	1.34	2.45
24GT04-077	E 47/3487	483300	7693900	47.2	101.62	2.15	3.35	19.65	0.57	0.27
24GT04-081	E 47/3487	483300	7693700	48.3	103.99	8.57	8.03	50	1.4	0.6
24GT04-087	E 47/3487	483300	7693400	58	124.87	7.62	7.45	46.3	1.13	0.65
24GT04-088	E 47/3487	483300	7693350	77.7	167.29	8.76	7.59	52.1	0.97	0.64
24GT04-093	E 47/3487	483299	7693100	54.1	116.48	5.94	7.57	58	1.32	0.58
24GT04-095	E 47/3487	483300	7693001	55.7	119.92	5.27	6.73	56.3	1.15	0.57
24GT04-096	E 47/3487	483300	7692949	69.5	149.63	3.82	6.35	52.2	1.16	0.56
24GT04-099	E 47/3487	483300	7692800	50.7	109.16	4.45	6.99	41.8	1.1	0.54
24GT04-103	E 47/3487	483401	7692649	83	178.70	21.6	6.41	60.4	1.18	0.5
24GT04-107	E 47/3487	483500	7693750	84.9	182.79	8.89	6.4	42	1.02	0.74
24GT04-108	E 47/3487	483500	7693700	48.3	103.99	4.71	7.73	34.5	1.16	0.55
24GT04-109	E 47/3487	483500	7693650	55.9	120.35	4.31	8.87	33.6	1.44	0.66
24GT04-111	E 47/3487	483498	7693556	46.4	99.90	3.39	13.15	58.4	1.66	1.22
24GT04-113	E 47/3487	483500	7693450	79.2	170.52	3.63	8.78	26.6	1.3	3.24
24GT04-114	E 47/3487	483500	7693400	57	122.72	17.35	4.35	38.5	0.92	0.37
24GT04-119	E 47/3487	483500	7693150	49.5	106.57	3.37	6.91	59.4	1.36	0.63
24GT04-121	E 47/3487	483500	7693050	91.7	197.43	3.97	5.5	52	1.12	0.71
24GT04-123	E 47/3487	483500	7692950	64.7	139.30	4.04	7.37	58.4	1.32	0.66
24GT04-124	E 47/3487	483500	7692900	81.5	175.47	4.64	6.47	67.9	1.3	0.52
24GT04-125	E 47/3487	483500	7692850	88.1	189.68	4.77	6.39	65.9	1.28	0.55
24GT04-126	E 47/3487	483498	7692802	59.9	128.96	7.54	7.15	68.7	1.46	0.71
24GT04-133	E 47/3487	483601	7692552	84.6	182.14	5.02	5.99	49.1	0.96	0.47
24GT04-135	E 47/3487	483700	7693800	58.1	125.09	7	6.86	41	1.19	0.54
24GT04-141	E 47/3487	483700	7693500	53.2	114.54	2.88	9.6	46.6	1.58	0.75
24GT04-143	E 47/3487	483700	7693398	54.7	117.77	6.5	8.91	50.5	1.6	2.21
24GT04-145	E 47/3487	483695	7693299	95.9	206.47	4.91	7.47	58.4	1.16	0.56
24GT04-146	E 47/3487	483698	7693248	75.2	161.91	39.6	5.85	53.2	0.97	0.83
24GT04-147	E 47/3487	483697	7693202	60.8	130.90	5.84	7.51	45.5	1.16	0.55
24GT04-151	E 47/3341	483701	7692999	52	111.96	3.86	5.69	52.1	1.22	0.44
24GT04-152	E 47/3341	483700	7692950	61.4	132.19	3.5	5.83	40.7	1.12	0.49
24GT04-153	E 47/3341	483697	7692899	56.4	121.43	3.85	6.51	54.1	1.21	0.49
24GT04-154	E 47/3341	483700	7692850	48	103.34	4.69	6.73	58.4	1.22	0.52
24GT04-155	E 47/3341	483698	7692799	57.3	123.37	26.2	9.73	83.6	1.61	0.66
24GT04-157	E 47/3341	483699	7692686	48.5	104.42	6.68	7.21	59	1.2	0.69
24GT04-162	E 47/3341	483900	7693400	67.5	145.33	5.43	8.84	66.8	2.26	0.68
24GT04-163	E 47/3341	483900	7693350	55.8	120.14	4.71	11.05	52.3	1.64	0.8
24GT04-164	E 47/3341	483900	7693300	58.8	126.60	6.9	6.39	58.6	1.15	0.54
24GT04-165	E 47/3341	483900	7693250	77.9	167.72	13.85	8.01	49.4	1.36	0.61
24GT04-166	E 47/3341	483900	7693200	84.1	181.07	7.8	6.09	61.8	1.08	0.52
24GT04-174	E 47/3341	483900	7692800	64.2	138.22	3.38	5.44	51.6	1.04	0.4
24GT04-176	E 47/3341	483900	7692700	55.1	118.63	3.61	6.46	47.2	1.24	0.94
24GT04-177	E 47/3341	483899	7692650	52	111.96	3.07	5.92	47	1.04	0.5
24GT04-184	E 47/3341	484103	7693398	48.9	105.28	3.5	10.25	47.6	1.64	0.71

Sample Id	Tenement	Easting	Northing	Lippm	Li20_ppm	Csppm	Nbppm	Rbppm	Snppm	Tappm
24GT04-186	E 47/3341	484100	7693300	52.4	112.82	5.55	7.98	47	1.22	0.91
24GT04-187	E 47/3341	484100	7693250	48.6	104.64	4.01	8.74	47.5	1.16	0.62
24GT04-192	E 47/3341	484101	7693000	58.6	126.17	4.18	6.44	59.5	1.19	0.49
24GT04-194	E 47/3341	484099	7692903	48.2	103.77	3.38	6.65	57.8	1.22	0.51
24GT04-195	E 47/3341	484100	7692852	59.1	127.24	3.05	6.4	56.8	1.17	0.75
24GT04-196	E 47/3341	484100	7692799	47.3	101.84	2.94	5.62	43.9	1.01	0.45
24GT04-197	E 47/3341	484101	7692747	55.9	120.35	2.67	6.08	52.3	1.27	0.52
24GT04-198	E 47/3341	484100	7692700	71.2	153.29	2.54	6.26	52.2	1.11	0.49
24GT04-210	E 47/3341	484299	7693292	60.4	130.04	7.72	10.7	73	1.98	0.83
24GT04-211	E 47/3341	484287	7693240	53.7	115.62	3.65	8.01	37.5	1.27	0.59
24GT04-212	E 47/3487	484301	7693203	65.5	141.02	5.47	8.24	51.7	1.26	0.6
24GT04-221	E 47/3487	484300	7692750	47.4	102.05	3.21	6.26	60.9	1.28	0.6
24GT04-224	E 47/3487	484300	7692600	52	111.96	3.77	7.66	64	1.36	0.62
24GT04-232	E 47/3341	484499	7693301	49	105.50	4.24	9.16	41.3	1.4	0.66
24GT04-233	E 47/3341	484500	7693250	76.2	164.06	8	7.25	60.8	1.27	0.6
24GT04-237	E 47/3341	484700	7693400	49.8	107.22	3.48	8.93	49.3	1.38	0.82
24GT04-238	E 47/3341	484700	7693350	55.6	119.71	3.35	9.44	42.8	1.62	0.73
24GT04-239	E 47/3341	484703	7693298	47.8	102.91	5.3	8.01	45.7	1.39	0.64
24GT04-240	E 47/3341	484700	7693250	55.5	119.49	4.98	9.5	50.1	1.52	0.72
24GT04-241	E 47/3341	484698	7693201	51.5	110.88	5.53	8.99	60.5	1.41	1.1
24GT04-242	E 47/3341	484700	7693150	48.4	104.21	7.47	7.43	49.6	1.32	0.59
24GT04-243	E 47/3341	484702	7693099	59.6	128.32	4.96	9.08	52.9	1.46	0.68
24GT04-245	E 47/3341	484900	7693300	82.4	177.41	4.42	9.1	48	1.59	0.7
24GT04-246	E 47/3341	484900	7693250	62.1	133.70	6.01	9.13	54.7	1.66	0.66
24GT04-247	E 47/3341	484900	7693200	50.5	108.73	4.18	8.9	55.4	1.67	1.13
24GT04-248	E 47/3341	484900	7693150	55.4	119.28	3.77	9.22	47.9	1.64	0.68
24GT04-255	E 47/3341	485100	7693000	53.5	115.19	15.15	6.99	57.2	1.22	0.57
24GT04-261	E 47/3341	485100	7692700	50.3	108.30	5.5	8.15	53.2	1.38	0.66
24GT04-262	E 47/3341	485304	7693104	48.6	104.64	5.26	10.05	51.8	1.6	0.92
24GT04-263	E 47/3341	485300	7693050	65.1	140.16	6.15	8.78	61.2	1.58	0.72
24GT04-270	E 47/3341	485300	7692700	93.3	200.87	7.22	9.71	58.1	1.03	0.72
24GT04-271	E 47/3341	485300	7692650	62.5	134.56	4.42	9.82	37.8	1.04	0.75
24GT04-272	E 47/3487	485301	7692605	120	258.36	8.68	6.54	81.4	0.93	0.53
24GT04-282	E 47/3487	485300	7691600	59.8	128.75	3.63	5.15	52.8	1.16	0.5
24GT04-283	E 47/3487	485299	7691548	51.9	111.74	4.06	5.96	55.8	1.24	0.53
24GT04-287	E 47/3341	485499	7693052	51	109.80	7.07	9.43	56.1	1.18	0.92
24GT04-291	E 47/3341	485500	7692851	54	116.26	7.81	9.28	44.7	1.11	0.86
24GT04-292	E 47/3341	485499	7692796	62.3	134.13	9.17	12.35	55.4	1.16	1.2
24GT04-293	E 47/3341	485496	7692753	80.1	172.46	5.81	9.73	41.7	1.04	0.83
24GT04-294	E 47/3341	485501	7692699	52	111.96	8.98	6.79	46.4	1.09	0.53
24GT04-295	E 47/3341	485500	7692650	68.7	147.91	4.95	8.85	45.4	0.94	0.68
24GT04-296	E 47/3487	485500	7692600	231	497.34	66.2	4.09	125.5	0.65	0.31
24GT04-297	E 47/3487	485500	7692550	59.5	128.10	8.35	13.5	46.8	1.43	0.86
24GT04-298	E 47/3487	485499	7692501	50.5	108.73	7.23	10.55	53.4	1.27	0.79
24GT04-299	E 47/3487	485500	7692452	50.3	108.30	8.96	6.86	52.6	1.03	0.53
24GT04-302	E 47/3487	485500	7691850	49	105.50	3.59	7.15	41.9	1.21	1.04
24GT04-304	E 47/3487	485500	7691750	48.6	104.64	3.6	6.85	45.9	1.31	0.78
24GT04-306	E 47/3487	485500	7691650	61.1	131.55	3.68	6.88	63.5	1.59	0.92
24GT04-308	E 47/3487	485500	7691550	48.4	104.21	2.96	5.95	47.4	1.19	0.59
24GT04-309	E 47/3487	485500	7691500	54.8	117.98	3.06	4.43	47.4	1	0.43
24GT04-321	E 47/3341	485700	7692800	48.9	105.28	7.85	7.42	46.6	1.01	0.57
24GT04-325	E 47/3487	485709	7692606	48.9	105.28	19.85	7.17	68.5	1.11	0.63
24GT04-326	E 47/3487	485700	7692550	47.4	102.05	7.7	7.53	47.1	1.37	0.63
24GT04-328	E 47/3487	485700	7692450	70.5	151.79	6.19	7.65	62.3	1.61	0.63
24GT04-329	E 47/3487	485700	7692400	60.9	131.12	11.4	8.82	54	1.34	0.91
24GT04-330	E 47/3487	485700	7692350	64	137.79	7.6	9.7	68.2	1.07	0.73
24GT04-331	E 47/3487	485714	7692309	64.5	138.87	6.73	9.89	69.2	1.1	0.84
24GT04-332	E 47/3487	485700	7692250	73.8	158.89	6.68	10.1	87.1	1.15	0.73
24GT04-333	E 47/3487	485700	7692200	55.9	120.35	5.67	9.4	72.2	1.44	0.69
24GT04-338	E 47/3487	485700	7691553	53.1	114.32	3.22	5.05	52.4	1.2	0.52
24GT04-340	E 47/3487	485703	7691455	47	101.19	4.64	5.72	57.3	1.37	2.05
24GT04-350	E 47/3341	485900	7692750	56.8	122.29	3.05	6.77	37.1	1.47	0.64
24GT04-355	E 47/3487	485892	7692495	47.2	101.62	7.74	9.52	46.5	1.26	1.1
24GT04-356	E 47/3487	485905	7692441	52.9	113.89	5.47	6.45	53.9	1.1	0.52
24GT04-359	E 47/3487	485898	7692300	67	144.25	5.01	7.83	51.9	0.95	0.69

Sample Id	Tenement	Easting	Northing	Lippm	Li20_ppm	Csppm	Nbppm	Rbppm	Snppm	Tappm
24GT04-360	E 47/3487	485900	7692248	75.2	161.91	4.03	10.3	48.9	1.11	0.95
24GT04-361	E 47/3487	485900	7692200	55.9	120.35	6.85	8.37	56.5	1.38	0.77
24GT04-362	E 47/3487	485900	7692150	70.3	151.36	4.42	7.16	43.8	0.98	0.58
24GT04-363	E 47/3487	485900	7692100	67	144.25	19.95	10.6	63	1.4	0.83
24GT04-364	E 47/3487	485900	7692050	47.9	103.13	6.95	9.14	81.8	1.38	0.74
24GT04-365	E 47/3487	485900	7692000	58.1	125.09	13.4	7.32	50.7	1.63	0.63
24GT04-368	E 47/3487	485900	7691850	68.8	148.13	4.8	6.59	52.4	1.74	0.71
24GT04-371	E 47/3487	485900	7691450	48.6	104.64	3.1	6.07	48.9	1.26	0.58
24GT04-372	E 47/3487	485900	7691400	54.3	116.91	3.46	5.72	64.8	1.32	0.89
24GT04-373	E 47/3487	485900	7691350	56.9	122.51	3.24	5.82	60.5	1.4	0.55
24GT04-374	E 47/3487	485900	7691300	47.8	102.91	3.01	6.86	57.8	1.02	1.03
24GT04-378	E 47/3487	486000	7691250	75.9	163.41	3.71	5.09	53	0.99	0.43
24GT04-382	E 47/3487	486098	7692500	59.6	128.32	3.9	7.88	53.2	1.33	0.67
24GT04-384	E 47/3487	486101	7692399	52.4	112.82	12	6.97	48.8	1.13	0.55
24GT04-388	E 47/3487	486101	7692201	139.5	300.34	8.68	6.74	70.8	1	0.52
24GT04-389	E 47/3487	486100	7692153	54.1	116.48	4.26	15.75	45	1.1	1.34
24GT04-390	E 47/3487	486093	7692107	63.9	137.58	6.83	14.4	62	1.28	1.22
24GT04-392	E 47/3487	486100	7692000	76.6	164.92	6.32	8.49	59.7	1.14	0.76
24GT04-397	E 47/3487	486100	7691750	93.4	201.09	11.55	6.61	64.6	1.28	0.59
24GT04-398	E 47/3487	486100	7691700	91.4	196.78	8.29	6.32	58.5	1.68	0.66
24GT04-407	E 47/3341	486202	7691249	52.9	113.89	3.01	6.15	64.6	1.32	0.59
24GT04-412	E 47/3341	486300	7692196	63.8	137.36	24.3	9.57	60.1	1.03	0.81
24GT04-413	E 47/3341	486298	7692149	55.6	119.71	5.14	14.85	35.9	0.86	1.32
24GT04-414	E 47/3341	486301	7692109	74.9	161.26	7.38	10.1	49.1	0.87	0.85
24GT04-416	E 47/3341	486303	7692007	93.4	201.09	9.87	11.15	56.6	1.1	0.97
24GT04-417	E 47/3341	486301	7691948	70.6	152.00	8.18	5.99	58.5	1.16	0.64
24GT04-418	E 47/3341	486302	7691901	61.2	131.76	6.49	6.16	55.8	1.18	0.56
24GT04-421	E 47/3341	486300	7691750	57.7	124.23	9.3	6.18	44.1	1.18	0.57
24GT04-422	E 47/3341	486300	7691700	83.2	179.13	3.76	5.99	45.8	1.26	0.54
24GT04-424	E 47/3341	486300	7691600	91.5	197.00	8.4	8.42	56.6	1.75	0.92
24GT04-426	E 47/3341	486497	7692201	52.5	113.03	5.09	7.63	43.8	0.97	0.53
24GT04-428	E 47/3341	486500	7692100	113.5	244.37	7.51	6.55	55.8	1.41	0.55
24GT04-429	E 47/3341	486500	7692050	62.3	134.13	5.25	8.01	45.3	1.31	0.61
24GT04-430	E 47/3341	486500	7692000	50.5	108.73	4.86	7.82	47.5	1.11	0.63
24GT04-431	E 47/3341	486500	7691950	71.8	154.59	7.72	9.22	61.8	1.38	0.72
24GT04-434	E 47/3341	486500	7691800	57.8	124.44	8.59	7.48	47.5	1.2	0.62
24GT04-435	E 47/3341	486500	7691750	59.3	127.67	3.73	7.62	46.5	1.24	0.68
24GT04-436	E 47/3341	486500	7691700	48.6	104.64	13.2	6.2	53.7	1.13	0.53
24GT04-440	E 47/3341	486500	7691500	69.5	149.63	5.34	5.99	55.4	1.29	0.67
24GT04-441	E 47/3341	486700	7692150	46.9	100.98	7.82	5.99	51.2	1	0.41
24GT04-444	E 47/3341	486700	7692000	52.6	113.25	4.18	8.87	44.8	1.21	0.69
24GT04-445	E 47/3341	486712	7691959	68.8	148.13	6.03	8.35	59	1.22	0.65
24GT04-451	E 47/3341	486700	7691650	120	258.36	9.21	6.28	77.1	2.4	0.68
24GT04-458	E 47/3341	486900	7692100	51	109.80	5.88	7	57.7	0.95	0.59
24GT04-461	E 47/3341	486900	7691950	54.6	117.55	3.68	9.08	43.8	0.93	0.79
24GT04-462	E 47/3341	486898	7691900	76.7	165.14	4.4	13.2	52.2	0.95	0.91
24GT04-463	E 47/3341	486909	7691848	53.1	114.32	4.79	9	57.5	1.16	0.83
24GT04-464	E 47/3341	486900	7691800	110	236.83	10.15	6.66	58.1	1.4	0.53
24GT04-467	E 47/3341	486900	7691650	65.1	140.16	10.4	7.63	54	1.86	0.75
24GT04-470	E 47/3341	486900	7691500	49.5	106.57	8.29	6.55	52.1	1.22	0.58
24GT04-476	E 47/3341	487100	7692000	53.2	114.54	15.6	5.08	28.8	0.94	0.44
24GT04-477	E 47/3341	487100	7691950	53.6	115.40	4.95	10.55	35	1.09	0.73
24GT04-478	E 47/3341	487100	7691900	51.3	110.45	4.49	7.67	39.6	1.1	0.58
24GT04-479	E 47/3341	487100	7691850	65.7	141.45	5.25	8.81	60.8	1.23	0.7
24GT04-480	E 47/3341	487100	7691800	49.1	105.71	14.75	8.78	53.7	1.34	0.77
24GT04-481	E 47/3341	487100	7691750	51.7	111.31	20.7	7.59	58	1.33	0.64
24GT04-485	E 47/3341	487100	7691550	89.8	193.34	10.15	7.38	55	1.35	0.69
24GT04-491	E 47/3341	487300	7691950	52	111.96	3.51	6.73	37.8	1.15	0.68
24GT04-492	E 47/3341	487308	7691903	49.2	105.93	7.29	6.09	37.5	1.05	0.57
24GT04-493	E 47/3341	487306	7691847	49.7	107.00	11	8.09	50.6	1.53	0.8
24GT04-495	E 47/3341	487294	7691753	76.4	164.49	6	8.79	53.2	1.56	0.75
24GT04-496	E 47/3341	487300	7691700	59.2	127.46	11.2	8.74	57.3	1.86	0.98
24GT04-497	E 47/3341	487300	7691650	72.8	156.74	34.3	8.33	95.8	2.12	1.75
24GT04-499	E 47/3341	487300	7691550	67.3	144.90	13.15	7.89	76.7	1.52	0.79
24GT04-509	E 47/3341	487300	7691050	73.6	158.46	3.51	6.75	80.4	1.32	0.86

Sample Id	Tenement	Easting	Northing	Lippm	Li20_ppm	Csppm	Nbppm	Rbppm	Snppm	Tappm
24GT04-517	E 47/3341	487500	7691750	48.9	105.28	11.7	5.51	44.8	1.16	0.56
24GT04-520	E 47/3341	487500	7691600	62	133.49	14.05	7.77	54.2	1.37	0.7
24GT04-522	E 47/3341	487500	7691500	75	161.48	12.2	10.55	91.9	2.08	2.64
24GT04-523	E 47/3341	487500	7691450	55.8	120.14	16.85	9.22	62.3	1.5	1.02
24GT04-525	E 47/3341	487500	7691350	66.3	142.74	8.48	9.33	57.2	1.34	1.4
24GT04-527	E 47/3341	487500	7691250	80.8	173.96	9	7.06	47.2	1.11	1.09
24GT04-529	E 47/3341	487505	7691158	63	135.64	8.46	5.58	35.5	1.08	0.52
24GT04-538	E 47/3341	487700	7691750	46.5	100.11	3.63	6.25	44.1	0.87	0.57
24GT04-540	E 47/3341	487700	7691650	62.5	134.56	3.77	6.04	40.7	1.15	0.57
24GT04-547	E 47/3341	487700	7691300	52.5	113.03	18.15	7.48	63.4	1.29	0.73
24GT04-548	E 47/3341	487700	7691250	134	288.50	59.4	5.25	96.4	1.25	0.62
24GT04-554	E 47/3341	487696	7690953	57.2	123.15	22.8	12.85	58.2	2.37	1.31
24GT04-555	E 47/3341	487700	7690900	61	131.33	23.1	14.45	86	2.3	5.38
24GT04-557	E 47/3341	487695	7690802	48.3	103.99	11.2	12.3	67.2	1.84	2.83
24GT05-028	E 47/3487	479300	7694000	47.3	101.84	3.27	13.4	50.5	2	6.99
24GT05-048	E 47/3487	479389	7693853	52.8	113.68	13.5	12.9	141.5	4.62	7.85
24GT05-063	E 47/3487	479486	7693956	74.3	159.97	21.6	17.75	182	6.19	15.15
24GT05-075	E 47/3487	479600	7694200	47.7	102.70	3.45	34.1	53.3	1.56	11
24GT05-076	E 47/3487	479600	7694150	49.1	105.71	3.76	8.68	53	1.44	1.34
24GT05-077	E 47/3487	479600	7694100	49.7	107.00	4.23	13.05	62.8	1.64	6.54
24GT05-080	E 47/3487	479600	7693950	72.9	156.95	16.5	21.4	146.5	13.45	18.65
24GT05-082	E 47/3487	479600	7693850	51.3	110.45	6.23	8.31	62.6	2.56	1.33
24GT05-087	E 47/3487	479700	7694400	50.2	108.08	3.9	5.36	50.6	1.24	0.46
24GT05-092	E 47/3487	479700	7694150	59.1	127.24	3.06	5.89	31.6	0.98	2.15
24GT05-093	E 47/3487	479700	7694100	54.8	117.98	3.35	5.26	26	0.94	1.13
24GT05-094	E 47/3487	479700	7694050	48.2	103.77	27.4	7.16	73.6	2.47	2.39
24GT05-095	E 47/3487	479700	7694000	62.4	134.35	37.5	23.3	168.5	6.19	17.9
24GT05-103	E 47/3487	479800	7694400	49	105.50	4.53	7.03	65	1.44	0.65
24GT05-109	E 47/3487	479800	7694100	102.5	220.68	4.97	10.85	49	1.24	7.72
24GT05-110	E 47/3487	479800	7694050	96	206.69	79.4	32.2	339	10.45	28.1
24GT05-112	E 47/3487	479800	7693950	58.8	126.60	15.05	8.78	78.1	3.57	2.78
24GT05-124	E 47/3487	479900	7694150	102	219.61	5.74	7.85	47.6	1.15	4.05
24GT05-125	E 47/3487	479900	7694100	57.7	124.23	32.9	26.6	136.5	6.67	23.8
24GT05-126	E 47/3487	479900	7694050	49.3	106.14	35.9	29.7	134.5	5.67	48.3
24GT05-139	E 47/3487	480000	7694150	64.4	138.65	31.9	22.5	177	6.24	22.3
24GT05-144	E 47/3487	480000	7693900	47.5	102.27	3.32	8.48	39.3	0.99	7.25
24GT05-151	E 47/3487	480091	7694300	48.2	103.77	4.77	8.32	66.6	1.79	1.65
24GT05-155	E 47/3487	480091	7694100	52.2	112.39	6.93	11.35	51.6	2.28	2.33
24GT05-156	E 47/3487	480091	7694050	78.1	168.15	7.34	21.8	48.6	1.71	8.18
24GT05-157	E 47/3487	480091	7694000	51.6	111.09	3.51	7.62	41.7	1.25	1.76

JORC Code, 2012 Edition - Table 1 report template

Section 1 Sampling Techniques and Data

(Criteria in this section apply to all succeeding sections.)

Criteria	JORC Code explanation	Commentary
Sampling techniques	<ul style="list-style-type: none"> Nature and quality of sampling (eg cut channels, random chips, or specific specialised industry standard measurement tools appropriate to the minerals under investigation, such as down hole gamma sondes, or handheld XRF instruments, etc). These examples should not be taken as limiting the broad meaning of sampling. Include reference to measures taken to ensure sample representivity and the appropriate calibration of any measurement tools or systems used. Aspects of the determination of mineralisation that are Material to the Public Report. In cases where 'industry standard' work has been done this would be relatively simple (eg 'reverse circulation drilling was used to obtain 1 m samples from which 3 kg was pulverised to produce a 30 g charge for fire assay'). In other cases more explanation may be required, such as where there is coarse gold that has inherent sampling problems. Unusual commodities or mineralisation types (eg submarine nodules) may warrant disclosure of detailed information. 	<ul style="list-style-type: none"> Reconnaissance style rock chip sampling taken opportunistically from pegmatite outcrop. Pegmatite was identified in outcrop. The rock chip samples were restricted to outcrop of pegmatite rocks. Samples were dispatched to ALS Global Laboratories in Perth for analysis. Greentech Soil Sampling 2024 The soil samples were uniformly collected from 15cm, with colour, moisture and general topography recorded. Samples were taken on a 50m x 200m grid Artemis Soil Sampling 2018 The soil samples were uniformly collected from 15cm, with colour, moisture and general topography recorded. Samples were taken on a 100m x 400m grid
Drilling techniques	<ul style="list-style-type: none"> Drill type (eg core, reverse circulation, open-hole hammer, rotary air blast, auger, Bangka, sonic, etc) and details (eg core diameter, triple or standard tube, depth of diamond tails, face-sampling bit or other type, whether core is oriented and if so, by what method, etc). 	<ul style="list-style-type: none"> This announcement does not relate to drilling carried out by Greentech Metals Ltd.
Drill sample recovery	<ul style="list-style-type: none"> Method of recording and assessing core and chip sample recoveries and results assessed. Measures taken to maximise sample recovery and ensure representative nature of the samples. Whether a relationship exists between sample recovery and grade and whether sample bias may have occurred due to preferential loss/gain of fine/coarse material. 	<ul style="list-style-type: none"> Not applicable as no details on any drilling carried out by GreenTech Metals are included in this announcement.
Logging	<ul style="list-style-type: none"> Whether core and chip samples have been geologically and geotechnically logged to a level of detail to support appropriate Mineral Resource estimation, mining studies and metallurgical studies. Whether logging is qualitative or quantitative in nature. Core (or costean, channel, etc) photography. The total length and percentage of the relevant intersections logged. 	<ul style="list-style-type: none"> Not applicable as no details on any drilling carried out by GreenTech Metals are included in this announcement.

<p>Sub-sampling techniques and sample preparation</p>	<ul style="list-style-type: none"> • <i>If core, whether cut or sawn and whether quarter, half or all core taken.</i> • <i>If non-core, whether riffled, tube sampled, rotary split, etc and whether sampled wet or dry.</i> • <i>For all sample types, the nature, quality and appropriateness of the sample preparation technique.</i> • <i>Quality control procedures adopted for all sub-sampling stages to maximise representivity of samples.</i> • <i>Measures taken to ensure that the sampling is representative of the insitu material collected, including for instance results for field duplicate/second-half sampling.</i> • <i>Whether sample sizes are appropriate to the grain size of the material being sampled.</i> 	<ul style="list-style-type: none"> • Rock chip samples were dispatched to ALS Global Laboratories in Perth for analysis using their ME_MS89L 55 element technique. • The laboratory reported the use of standards and blanks as part of the analyses for QA/QC. • The samples were opportunistic in nature and taken from insitu outcrop. • Samples were approximately 0.5kg to 1kg in weight. • The samples were considered generally representative of the outcrop being sampled. <p><u>Greentech Soil Sampling 2024</u></p> <ul style="list-style-type: none"> • The soil samples were uniformly collected from 15cm, with colour, moisture and general topography recorded. • Four Acid Digestion With ICP-MS Finish ME-MS61L-REE (0.25g sample), includes REE elements. • Ag, Al, As, Ba, Be, Bi, Ca, Cd, Ce, Co, Cr, Cs, Cu, Fe, Ga, Ge, Hf, In, K, La, Li, Mg, Mn, Mo, Na, Nb, Ni, P, Pb, Pd, Pt, Rb, Re, S, Sb, Sc, Se, Sn, Sr, Ta, Te, Th, Ti, Tl, U, V, W, Y, Zn, Zr. Dy, Er, Eu, Gd, Ho, Lu, Nd, Pr, Sm, Tb, Tm, Yb • Samples are pulverised to 85% passing 75 microns for maximum digestion. <p><u>Artemis Soil Sampling 2018</u></p> <ul style="list-style-type: none"> • The soil samples were uniformly collected from 15cm, with colour, moisture and general topography recorded. • The AuME-ST44 is an aqua regia digest with ICP-MS finish for multi-element analysis including: Au, Ag, Al, As, B, Ba, Be, Bi, Ca, Cd, Ce, Co, Cr, Cs, Cu, Fe, Ga, Ge, Hf, Hg, In, K, La, Li, Mg, Mn, Mo, Na, Nb, Ni, P, Pb, Pd, Pt, Rb, Re, S, Sb, Sc, Se, Sn, Sr, Ta, Te, Th, Ti, Tl, U, V, W, Y, Zn, Zr • Samples are pulverised to 95% passing 75 microns for maximum digestion. • Field duplicates were taken and submitted for analysis with the soil samples.
<p>Quality of assay data and laboratory tests</p>	<ul style="list-style-type: none"> • <i>The nature, quality and appropriateness of the assaying and laboratory procedures used and whether the technique is considered partial or total.</i> • <i>For geophysical tools, spectrometers, handheld XRF instruments, etc, the parameters used in determining the analysis including instrument make and model, reading times, calibrations factors applied and their derivation, etc.</i> • <i>Nature of quality control procedures adopted (eg standards, blanks, duplicates, external laboratory checks) and whether acceptable levels of accuracy (ie lack of bias) and precision have been established.</i> 	<ul style="list-style-type: none"> • Rock chip samples were dispatched to ALS Global Laboratories in Perth for analysis using their ME_MS89L 55 element technique. • The laboratory reported the use of standards and blanks as part of the analyses for QA/QC. • No standards or blanks were submitted by the company. <p><u>Greentech Soil Sampling 2024</u></p> <ul style="list-style-type: none"> • The soil samples were uniformly collected from 15cm, with colour, moisture and general topography recorded. • Four Acid Digestion With ICP-MS Finish ME-MS61L-REE (0.25g sample), includes REE elements.

	<ul style="list-style-type: none"> • Ag, Al, As, Ba, Be, Bi, Ca, Cd, Ce, Co, Cr, Cs, Cu, Fe, Ga, Ge, Hf, In, K, La, Li, Mg, Mn, Mo, Na, Nb, Ni, P, Pb, Pd, Pt, Rb, Re, S, Sb, Sc, Se, Sn, Sr, Ta, Te, Th, Ti, Tl, U, V, W, Y, Zn, Zr. Dy, Er, Eu, Gd, Ho, Lu, Nd, Pr, Sm, Tb, Tm, Yb • Samples are pulverised to 85% passing 75 microns for maximum digestion. <p><u>Artemis Soil Sampling 2018</u></p> <ul style="list-style-type: none"> • ALS (Perth) were used for all analysis of samples submitted by Artemis. The laboratory techniques below are for all samples submitted to ALS and are considered appropriate for the styles of mineralisation within the Karratha region: • The AuME-ST44 is an aqua regia digest with ICP-MS finish for multi-element analysis including: Au, Ag, Al, As, B, Ba, Be, Bi, Ca, Cd, Ce, Co, Cr, Cs, Cu, Fe, Ga, Ge, Hf, Hg, In, K, La, Li, Mg, Mn, Mo, Na, Nb, Ni, P, Pb, Pd, Pt, Rb, Re, S, Sb, Sc, Se, Sn, Sr, Ta, Te, Th, Ti, Tl, U, V, W, Y, Zn, Zr • Samples are pulverised to 95% passing 75 microns for maximum digestion. • Field duplicates were taken and submitted for analysis with the soil samples.
<p>Verification of sampling and assaying</p>	<ul style="list-style-type: none"> • <i>The verification of significant intersections by either independent or alternative company personnel.</i> • <i>The use of twinned holes.</i> • <i>Documentation of primary data, data entry procedures, data verification, data storage (physical and electronic) protocols.</i> • <i>Discuss any adjustment to assay data.</i> <ul style="list-style-type: none"> • Duplicate sample of the high-grade lithium bearing pegmatite was submitted to ALS for XRD analysis. • The results of these verification analyses are herein reported.
<p>Location of data points</p>	<ul style="list-style-type: none"> • <i>Accuracy and quality of surveys used to locate drill holes (collar and down-hole surveys), trenches, mine workings and other locations used in Mineral Resource estimation.</i> • <i>Specification of the grid system used.</i> • <i>Quality and adequacy of topographic control.</i> <ul style="list-style-type: none"> • Sample points were determined by hand held GPS which is considered appropriate for the reconnaissance nature of the sampling. <p><u>Greentech Soil Sampling 2024</u></p> <ul style="list-style-type: none"> • A Garmin GXL12 hand-held GPS was used to define the location of the soil samples. • The grid system used for all Artemis sampling is GDA94 (MGA 94 Zone 50) <p><u>Artemis Soil Sampling 2018</u></p> <ul style="list-style-type: none"> • A Garmin GXL12 hand-held GPS was used to define the location of the soil samples. • The grid system used for all Artemis sampling is GDA94 (MGA 94 Zone 50)
<p>Data spacing and distribution</p>	<ul style="list-style-type: none"> • <i>Data spacing for reporting of Exploration Results.</i> • <i>Whether the data spacing and distribution is sufficient to establish the degree of geological and grade continuity appropriate for the Mineral Resource and Ore Reserve estimation procedure(s) and classifications applied.</i> • <i>Whether sample compositing has been applied.</i> <p><u>Greentech Soil Sampling 2024</u></p> <ul style="list-style-type: none"> • Samples were taken on a 50m x 200m grid orientated N-S <p><u>Artemis Soil Sampling 2018</u></p> <ul style="list-style-type: none"> • Samples were taken on a 100m x 400m grid orientated N-S

Orientation of data in relation to geological structure	<ul style="list-style-type: none"> • Whether the orientation of sampling achieves unbiased sampling of possible structures and the extent to which this is known, considering the deposit type. • If the relationship between the drilling orientation and the orientation of key mineralised structures is considered to have introduced a sampling bias, this should be assessed and reported if material. 	<ul style="list-style-type: none"> • All soil sampling grids were orientated approximately orthogonal to the regional pegmatite structures
Sample security	<ul style="list-style-type: none"> • The measures taken to ensure sample security. 	<ul style="list-style-type: none"> • Sample security is by way of chain of custody.
Audits or reviews	<ul style="list-style-type: none"> • The results of any audits or reviews of sampling techniques and data. 	<ul style="list-style-type: none"> • No review of the sampling techniques has been undertaken.

Section 2 Reporting of Exploration Results

(Criteria listed in the preceding section also apply to this section.)

Criteria	JORC Code explanation	Commentary
Mineral tenement and land tenure status	<ul style="list-style-type: none"> • Type, reference name/number, location and ownership including agreements or material issues with third parties such as joint ventures, partnerships, overriding royalties, native title interests, historical sites, wilderness or national park and environmental settings. • The security of the tenure held at the time of reporting along with any known impediments to obtaining a licence to operate in the area. 	<ul style="list-style-type: none"> • The Ruth Well project tenements cover an area of 39km² and comprises granted tenements: 47/4387, E47/3341, P47/1998, E47/3719 and P47/1929. • The tenements are owned 100% by GreenTech Metals subsidiary company GreenTech Holdings Pty Ltd with the exception of tenement E47/3719 which is subject to a Greentech Metals/Artemis Resources 51%/49% Joint Venture • The tenements are in good standing with DMIRS and there are no known impediments for exploration on these tenements.
Exploration done by other parties	<ul style="list-style-type: none"> • Acknowledgment and appraisal of exploration by other parties. 	<ul style="list-style-type: none"> • Numerous exploration parties have held the area covered by the current GreenTech tenure previously. There is no reported recent or historic exploration for lithium bearing pegmatites on the tenements. • Exploration data generated by Artemis Resources was used in this release. • Regional RTP aeromagnetics and geology from Geological Survey of WA. • The area was previously explored by Fox Resources Ltd and Artemis Resources Ltd with both focussed on nickel exploration.
Geology	<ul style="list-style-type: none"> • Deposit type, geological setting and style of mineralisation. 	<ul style="list-style-type: none"> • The lithium bearing pegmatite zone trends WNW-ESE and is hosted by strongly sheared sediments of the Regal Formation. • The pegmatites occur as intermittent lenses in strongly sheared sediments assigned to the Regal Formation and are located approximately 3km to the north of the Sholl Shear Zone. • The pegmatites are steeply dipping and up to 20m wide. • The project area is underlain by the Archean Pilbara Craton, specifically the West Pilbara Superterrane (WPST) of Hickman (2016). The 3280-3070 Ma

		<p>WPST comprises numerous tectonostratigraphic packages (Sholl, Regal and Karratha Terranes and the Whundo and Nickol River Basins) and igneous complexes that have been variously affected by several tectonic events. The easterly to east-north easterly trending Sholl Shear Zone (SSZ) is a boundary for the regional rock packages. Metamorphic grade is higher to the north of the SSZ, suggesting the present-day surface shows a slightly deeper crustal level on the north side.</p>
Drill hole Information	<ul style="list-style-type: none"> • A summary of all information material to the understanding of the exploration results including a tabulation of the following information for all Material drill holes: <ul style="list-style-type: none"> ○ easting and northing of the drill hole collar ○ elevation or RL (Reduced Level – elevation above sea level in metres) of the drill hole collar ○ dip and azimuth of the hole ○ down hole length and interception depth ○ hole length. • If the exclusion of this information is justified on the basis that the information is not Material and this exclusion does not detract from the understanding of the report, the Competent Person should clearly explain why this is the case. 	<ul style="list-style-type: none"> • Not applicable as no drilling has been undertaken
Data aggregation methods	<ul style="list-style-type: none"> • In reporting Exploration Results, weighting averaging techniques, maximum and/or minimum grade truncations (eg cutting of high grades) and cut-off grades are usually Material and should be stated. • Where aggregate intercepts incorporate short lengths of high grade results and longer lengths of low grade results, the procedure used for such aggregation should be stated and some typical examples of such aggregations should be shown in detail. • The assumptions used for any reporting of metal equivalent values should be clearly stated. 	<ul style="list-style-type: none"> • No aggregation methods have been used in the reporting of these results
Relationship between mineralisation widths and intercept lengths	<ul style="list-style-type: none"> • These relationships are particularly important in the reporting of Exploration Results. • If the geometry of the mineralisation with respect to the drill hole angle is known, its nature should be reported. • If it is not known and only the down hole lengths are reported, there should be a clear statement to this effect (eg 'down hole length, true width not known'). 	<ul style="list-style-type: none"> • Not applicable as surface sampling is reconnaissance in nature.
Diagrams	<ul style="list-style-type: none"> • Appropriate maps and sections (with scales) and tabulations of intercepts should be included for any significant discovery being reported These should include, but not be limited to a plan view of drill hole collar locations and appropriate sectional views. 	<ul style="list-style-type: none"> • All the appropriate maps are provided in the body of this announcement.

Balanced reporting	<ul style="list-style-type: none"> Where comprehensive reporting of all Exploration Results is not practicable, representative reporting of both low and high grades and/or widths should be practiced to avoid misleading reporting of Exploration Results. 	<ul style="list-style-type: none"> This announcement discusses the findings of recent reconnaissance sampling and associated assays.
Other substantive exploration data	<ul style="list-style-type: none"> Other exploration data, if meaningful and material, should be reported including (but not limited to): geological observations; geophysical survey results; geochemical survey results; bulk samples – size and method of treatment; metallurgical test results; bulk density, groundwater, geotechnical and rock characteristics; potential deleterious or contaminating substances. 	<ul style="list-style-type: none"> All the meaningful exploration data has been included in the body of this announcement.
Further work	<ul style="list-style-type: none"> The nature and scale of planned further work (eg tests for lateral extensions or depth extensions or large-scale step-out drilling). Diagrams clearly highlighting the areas of possible extensions, including the main geological interpretations and future drilling areas, provided this information is not commercially sensitive. 	<ul style="list-style-type: none"> GreenTech plans to conduct further ground reconnaissance and sampling in the short term to determine the surface extent both laterally and along strike and also the economic potential of the prospect. Trenching and drilling will also be undertaken if warranted.