

18 July 2024



Noosa Mining Investor Conference

Alkane Resources Limited's Managing Director, Mr Nic Earner, will be presenting at the Noosa Mining Investor Conference today at 9:45 am (AEST), (7:45am (AWST)).

A copy of Mr Earner's presentation is attached.

This document has been authorised for release to the market by Nic Earner, Managing Director.

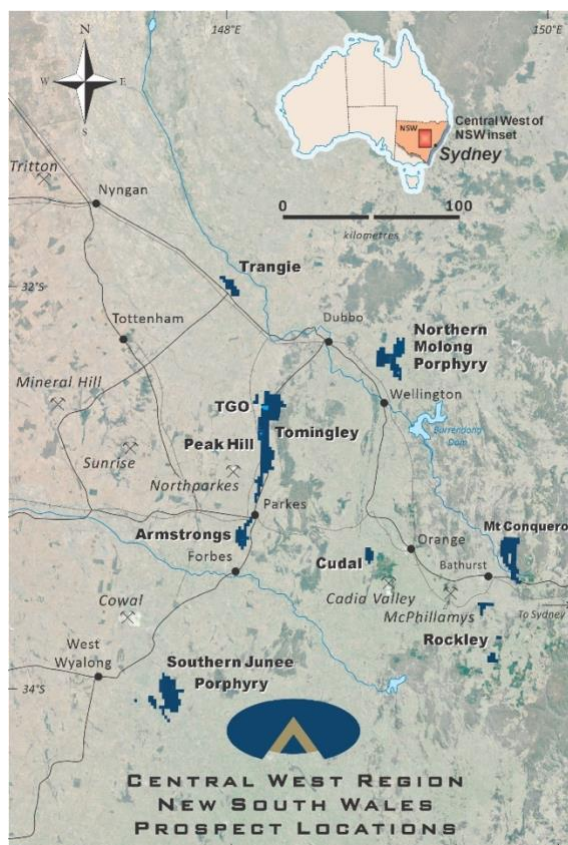
ABOUT ALKANE - www.alkane.com.au - **ASX: ALK**

Alkane Resources intends to grow to become one of Australia's multi-mine gold and copper producers. The Company's current gold production is from the Tomingley Gold Operations in Central West New South Wales, where it has been operating since 2014 and is currently expediting a development pathway to extend the mine's life beyond 2030.

Alkane has an enviable exploration track record and controls several highly prospective gold and copper tenements. Its most advanced exploration projects are in the tenement area between Tomingley and Peak Hill, which have the potential to provide additional ore for Tomingley's operations.

Alkane's exploration success includes the landmark porphyry gold-copper mineralisation discovery at Boda in 2019. With drilling ongoing adjacent to the initial resources identified at Boda and Kaiser, Alkane is confident of further consolidating Central West New South Wales' reputation as a significant gold production region.

Alkane's gold interests extend throughout Australia, with strategic investments in other gold exploration and aspiring mining companies.



CONTACT : **NIC EARNER, MANAGING DIRECTOR, ALKANE RESOURCES LTD, TEL +61 8 9227 5677**
INVESTORS : **NATALIE CHAPMAN, CORPORATE COMMUNICATIONS MANAGER, TEL +61 418 642 556**
MEDIA : **PAUL RYAN, CITADEL-MAGNUS, TEL +61 409 296 511**



Noosa Mining Investor Conference

Nic Earner
Managing Director

18 July 2024



Find.

Enhance.

Deliver.

Disclaimer



This presentation contains certain forward-looking statements and forecasts, including possible or assumed reserves and resources, production levels and rates, costs, prices, future performance or potential growth of Alkane Resources Ltd, industry growth or other trend projections. Such statements are not a guarantee of future performance and involve unknown risks and uncertainties, as well as other factors which are beyond the control of Alkane Resources Ltd. Actual results and developments may differ materially from those expressed or implied by these forward-looking statements depending on a variety of factors. Nothing in this presentation should be construed as either an offer to sell or a solicitation of an offer to buy or sell securities.

Alkane Resources Ltd cannot and does not give any assurance that the results, performance or achievements expressed or implied by the forward-looking statements contained in this presentation will occur and investors are cautioned not to place any reliance on these forward-looking statements. Alkane Resources Ltd does not undertake to update or revise forward-looking statements, or to publish prospective financial information in the future, regardless of whether new information, future events or any other factors affect the information contained in this presentation, except where required by applicable law and stock exchange listing requirements. This document has been prepared in accordance with the requirements of Australian securities laws, which may differ from the requirements of United States and other countries' securities laws. Unless otherwise indicated, all ore reserve and mineral resource estimates included or incorporated by reference in this document have been, and will be, prepared in accordance with the JORC classification system of the Australasian Institute of Mining, and Metallurgy and Australian Institute of Geosciences.

Previously reported information

The information in this presentation that relates to the combined mineral resources and ore reserves is drawn from the Company's ASX announcement dated 13 September 2023, 27 February 2024. Exploration results are extracted from the Company's ASX announcements noted in the text of the document and are available to view on the Company's website. The information relating to the Tomingley Five Year Plan is drawn from the Company's ASX Announcement dated 24 June 2024. The information relating to the Boda-Kaiser Scoping Study is drawn from the Company's ASX Announcement dated 10 July 2024. The Company confirms that it is not aware of any new information or data that materially affects the information included in the relevant market announcement(s); in the case of estimates of mineral resources or ore reserves, that all material assumptions and technical parameters underpinning the estimates in the relevant market announcement continue to apply and have not materially changed; and that the form and context in which the Competent Person's findings are presented have not been materially altered.

Competent person

Unless otherwise advised above or in the Announcements referenced, the information in this presentation that relates to exploration results, mineral resources and ore reserves is based on information compiled by Mr D I Chalmers, FAusIMM, FAIG, (director of the Company) who has sufficient experience which is relevant to the style of mineralisation and type of deposit under consideration and to the activity which he is undertaking to qualify as a Competent Person as defined in the 2012 Edition of the Australasian Code for Reporting of Exploration Results, Mineral Resources and Ore Reserves. Mr Chalmers consents to the inclusion in this presentation of the matters based on his information in the form and context in which it appears.

Company Snapshot

Tomingley

 FY25:
70K-80K oz Au
\$2,400-\$2,600 AISC


 From FY27:
100K+ oz Au (pa)
\$1,900-\$2,100 AISC

 **\$132M**
capital for growth
over next 18 months

Boda-Kaiser (20Mtpa)

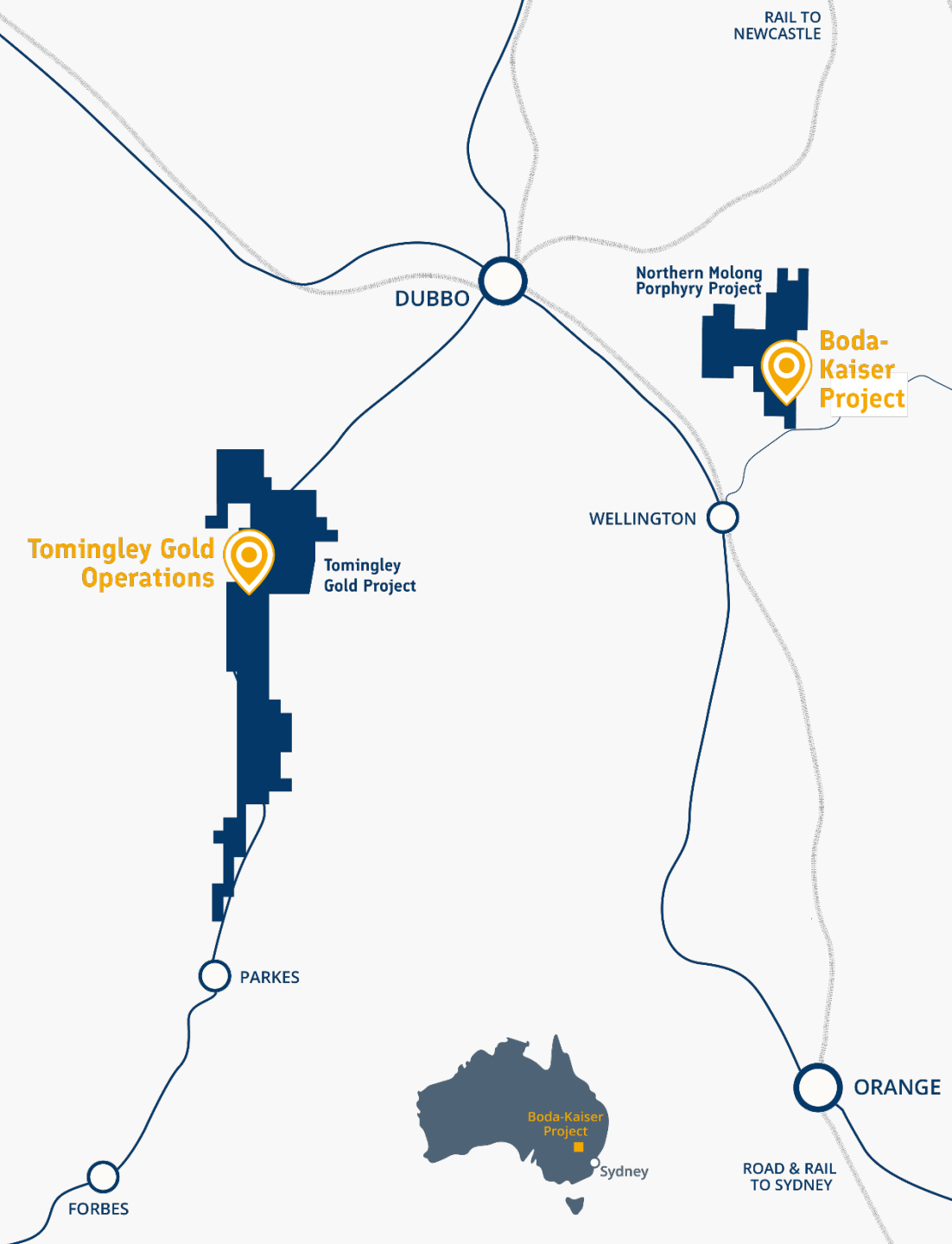
 **A\$1.78B**
pre-production capital

 **35,600 t**

 **159,300 oz**
(pa for first 5yrs)

 **A\$5.7B**
free cashflow (pre-tax)

 **17yr+**
mine life

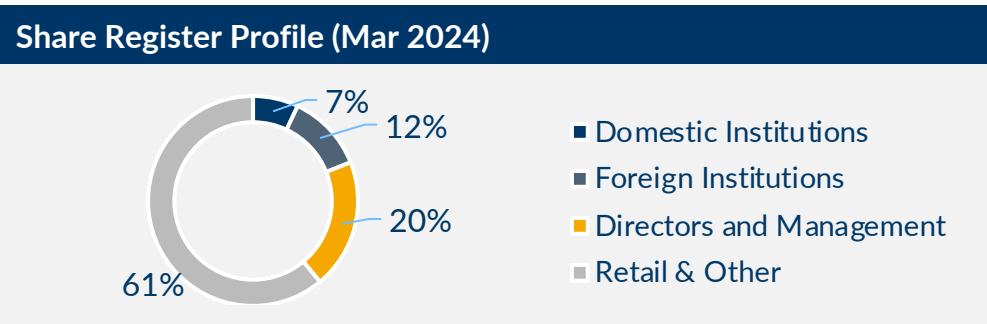


* Tomingley 5yr plan (24 Jun 2024) - alkane.com.au/tomingley-five-year-plan

** Boda-Kaiser Scoping Study (10 July 2024) - alkane.com.au/boda-kaiser-scoping-study

Corporate Profile

Capital Structure	
Ordinary Shares	603 million
Share Price (17 July 2024)	A\$0.56
Market Capitalisation	A\$335M
12 Month low/high	A\$0.46/0.83
Cash and Gold Bullion (30 June 2024)	~A\$54.2M
Interest Bearing Debt Drawn (30 June 2024)	~A\$50M
Total Liquidity (30 June 2024)	~A\$71M
Enterprise Value	~A\$331M
Average Daily Turnover (6 Months)	~A\$0.6M/day



Broker Coverage

ORD MINNETT

BELL POTTER

EUROZ HARTLEYS
GROUP

PETRA
CAPITAL

MA
Financial
Group

EDISON

Share Price 2024



HEDGING

87,200 oz
at A\$2,839.30

PUT OPTIONS

140,799 oz
at A\$3,000

DELIVERY

Jul 2024 to
Jun 2027



Tomingley



Tomingley Operation



FY25-29:

455,000-505,000 oz Au

\$1,900-\$2,100 AISC



\$132M

capital for growth
over next 18 mths



Mine life to

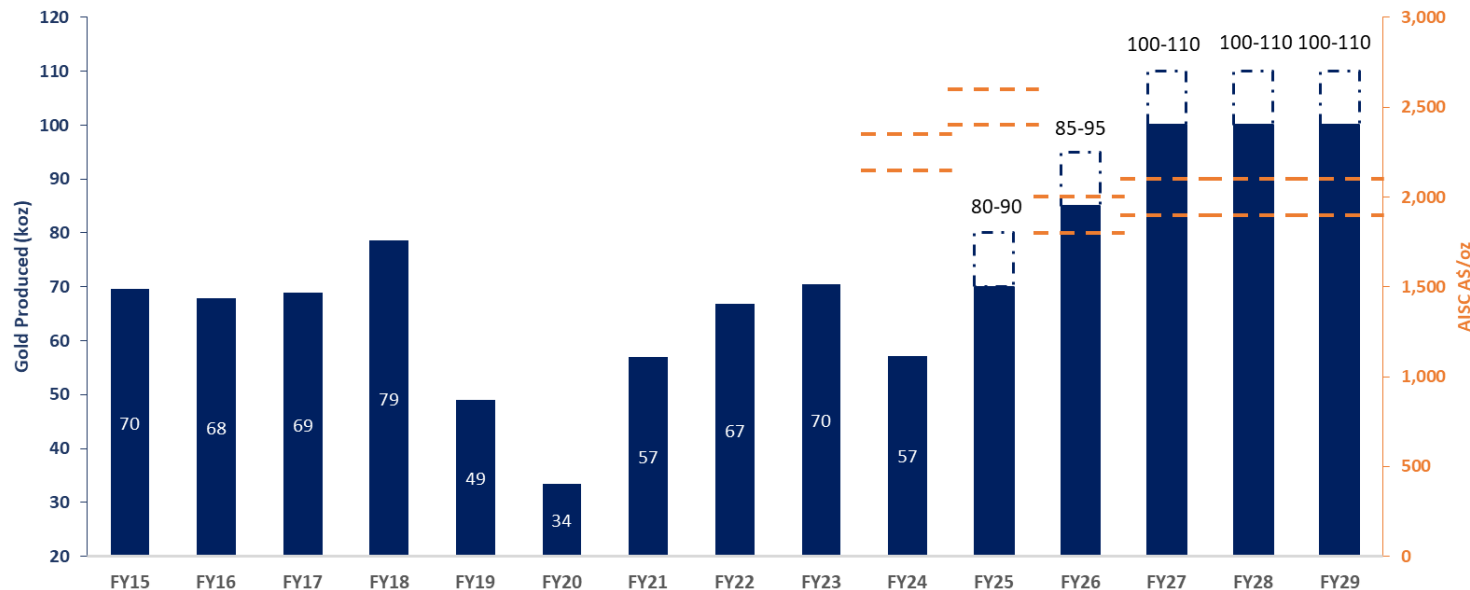
2030+



\$1.5M oz Au

in resource

Tomingley Actual / Estimated Production and AISC



Tomingley Gold Operations



REALIGNED
NEWELL
HIGHWAY

EXISTING
NEWELL
HIGHWAY

Waste Rock
Emplacement



San Antonio &
Roswell open cut



TO PARKES

TO DUBBO



Boda-Kaiser



Summary Scoping Study Metrics



20 Mtpa

Throughput (2 x 10 Mtpa)



17+ years

Life of Mine



A\$1.8B

Capex (pre-production)



35,611 tpa

Copper (first 5 years)



159,334 oz pa

Gold (first 5 years)



A\$630.4 / oz

AISC (with copper by-product credit)



A\$4.3B

10-Year Free Cashflow (pre-tax)



A\$1.8B

NPV (7%)

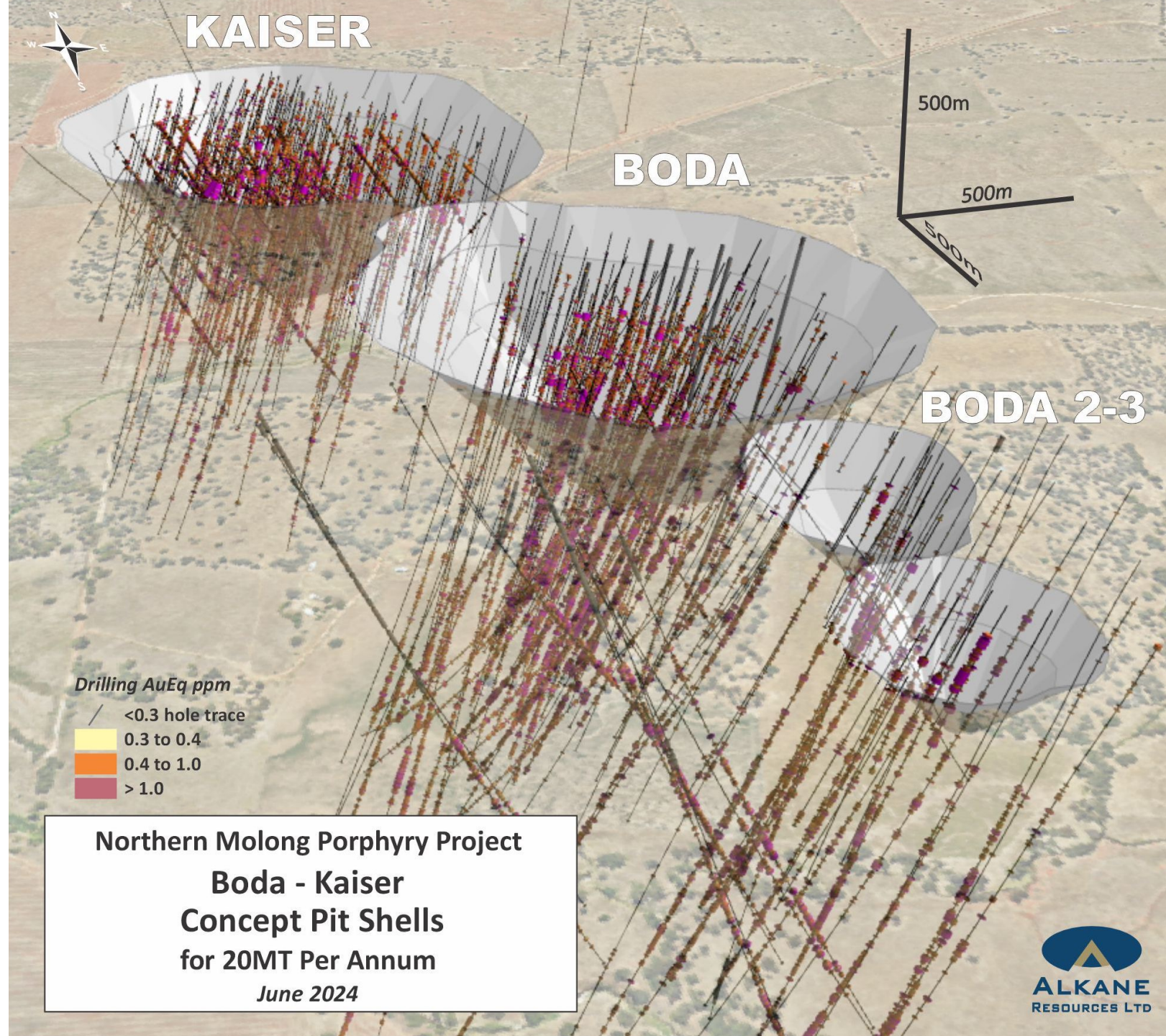


24%

IRR

Boda-Kaiser

- Regional exploration opportunities (~\$5m pa)
- Environmental studies commenced
- Further studies to reduce mining costs and assess potential for bulk-tonnage, underground mining
- Engaging with potential partners



Company Summary

Tomingley



Substantial cash and increase gold production to
100,000 oz Au (pa)



\$132M capital for growth over next 18 months

Alkane



3 major projects approved
in last 12 years



Stock presents value opportunity
for shareholders

Boda-Kaiser



35,600 tonnes Cu



159,300 oz Au
(pa for first 5yrs)



4-year payback



Environmental studies continuing



Engaging with potential partners



ALKANE
RESOURCES LTD

 @alkaneresources

 alkane-resources-ltd

 alkane.com.au

Find.

Enhance.

Deliver.

Board and Management



Ian Gandel
Non-Executive
Chairman



Nic Earner
Managing
Director



Ian Chalmers
Technical
Director



Gavin Smith
Non-Executive
Director



Anthony Lethlean
Non-Executive
Director



James Carter
CFO and Joint
Company Secretary



Dennis Wilkins
Joint Company
Secretary



Simon Parsons
Executive General
Manager, Operations



Jason Hughes
General Manager,
Operations



Mike Sutherland
General Manager,
NSW



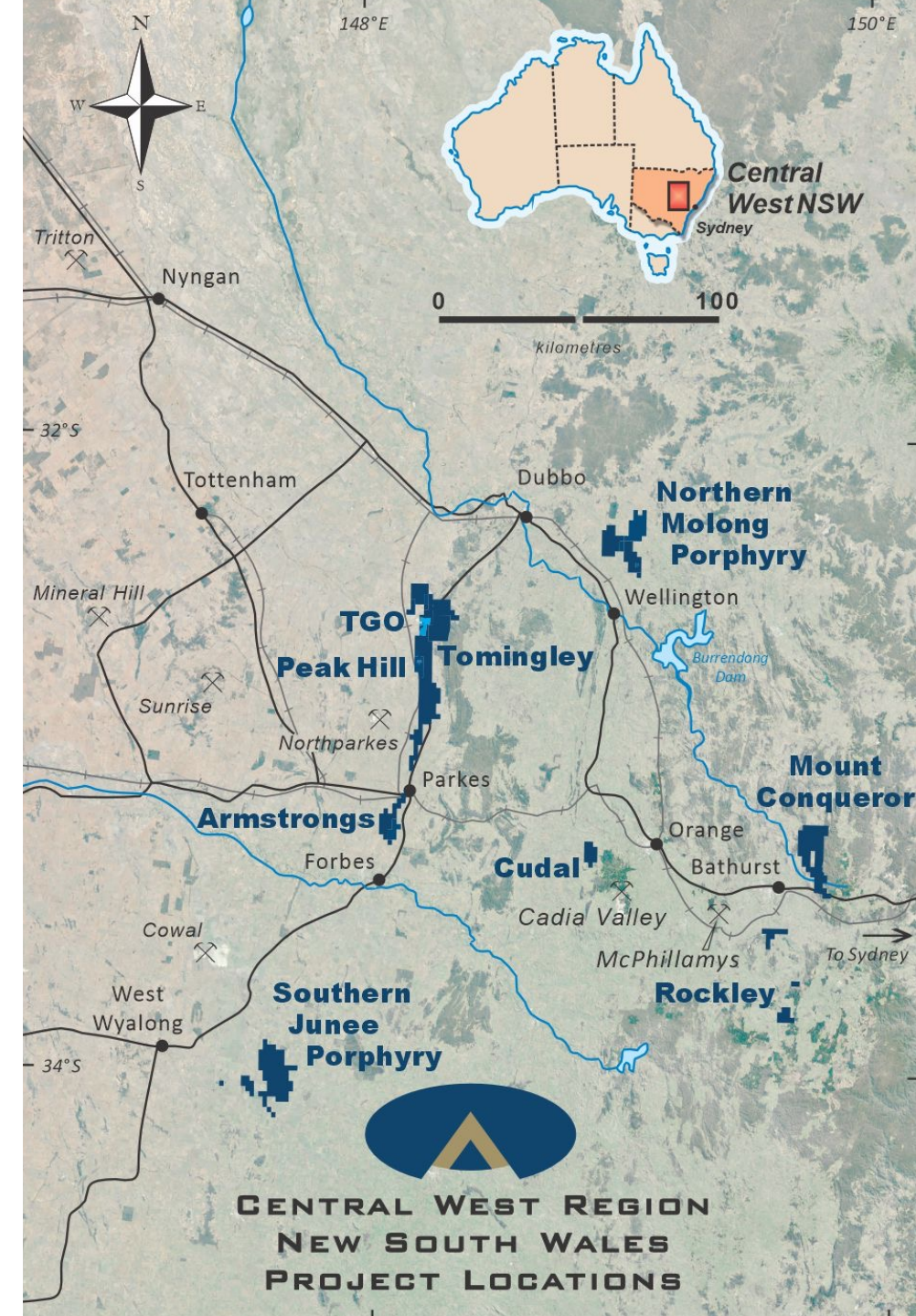
Brendan Ward
General Manager,
Legal & Commercial



David Meates
Exploration Manager,
NSW

Successful Explorers

- Alkane draws on its extensive experience to create value through mineral resource discoveries
 - Long term well-resourced team
 - Comprehensive databases
 - Detailed regional knowledge
- Successful at developing its discoveries and will also transact or joint venture for value
- At Tomingley, regional programs seek to add further mine life, in context of approval times
- On discovery, Alkane first increases knowledge and then increase drill density to produce a resource to de-risk projects
- Continue to be very cost effective in discovery to development
 - San Antonio / Roswell cost <\$20 per resource ounce
 - Boda / Kaiser cost <\$4 per resource ounce (equivalent)



Tomingley Resources

Tomingley Gold Operations Mineral Resources (as at 30 June 2023)

DEPOSIT	MEASURED		INDICATED		INFERRED		TOTAL		Total Gold (koz)
	Tonnage (kt)	Grade (g/t Au)	Tonnage (kt)	Grade (g/t Au)	Tonnage (kt)	Grade (g/t Au)	Tonnage (kt)	Grade (g/t Au)	
Open Pittable Resources (cut-off 0.4g/t Au)									
Caloma One	0	0	0	0	0	0	0	0	0
Sub Total	0	0	0	0	0	0	0	0	0
Underground Resources (cut-off 1.3g/t Au)									
Wyoming One	988	2.8	725	2.2	375	1.8	2,088	2.4	163
Wyoming Three	46	2.2	24	2.0	20	1.9	90	2.1	6
Caloma One	359	2.5	1,113	2.0	328	2.0	1,800	2.1	123
Caloma Two	115	2.5	1,066	2.3	360	2.2	1,541	2.3	115
Sub Total	1,508	2.7	2,928	2.2	1,083	2.0	5,519	2.3	407
TOTAL	1,508	2.7	2,928	2.2	1,083	2.0	5,519	2.3	407

Apparent arithmetic inconsistencies are due to rounding.
Open cut mining ceased at Tomingley during the year and the operation transitioned to fully underground mining at Wyoming One, Caloma One and Caloma Two.

TOMINGLEY GOLD EXTENSION PROJECT MINERAL RESOURCES (as at 21 February 2024)									
DEPOSIT	MEASURED		INDICATED		INFERRED		TOTAL		Total Gold
	Tonnage	Grade	Tonnage	Grade	Tonnage	Grade	Tonnage	Grade	
	(Kt)	(g/t Au)	(Kt)	(g/t Au)	(Kt)	(g/t Au)	(Kt)	(g/t Au)	(Koz)
Total Resources (cut off 0.4g/t Au Roswell and 0.5g/t Au San Antonio)									
Roswell			3900	1.7	0.0	0.0	3900	1.7	213
San Antonio			5,930	1.82	1,389	1.32	7,319	1.73	406
Sub Total	0	0.0	9,830	1.77	1,389	1.32	11,219	1.72	619
Underground Resources (cut off 1.3g/t Au)									
McLeans			0	0.0	870	2.5	870	2.5	70
Roswell			3260	2.9	2290	2.5	5550	2.7	489
Sub Total			3,260	2.88	3,160	2.53	6,420	2.71	560
TOTAL			13,090	2.05	4,549	1.68	17,639	1.95	1,179

TOMINGLEY GOLD EXTENSION PROJECT ORE RESERVES (as at 21 February 2024)							
DEPOSIT	PROVED		PROBABLE		TOTAL		Total Gold (Koz)
	Tonnage (Kt)	Grade (g/t Au)	Tonnage (Kt)	Grade (g/t Au)	Tonnage (Kt)	Grade (g/t Au)	
Open Pittable Reserves (cut off 0.40g/t Au)							
Roswell	0	0.0	3,900	1.7	3,900	1.7	213
San Antonio	0	0.0	4,100	1.6	4,100	1.6	214
Sub Total	0		8,000	1.6	8,000	1.6	427
Underground Reserves (cut off 1.6g/t Au)							
Roswell	0	0.0	3,209	2.3	3,209	2.3	237
San Antonio*	0	0.0	0	0.0	0	0.0	0
Sub Total	0	0.0	3,209	2.6	3,209	2.6	237
TOTAL	0	0.0	11,209	1.9	11,209	1.9	664

* San Antonio ore reserves not determined at this time.

Tomingley Gold Operations Ore Reserves (as at 30 June 2023)

DEPOSIT	PROVED		PROBABLE		TOTAL		Total Gold (koz)
	Tonnage (kt)	Grade (g/t Au)	Tonnage (kt)	Grade (g/t Au)	Tonnage (kt)	Grade (g/t Au)	
Open Pittable Reserves (cut-off 0.4g/t Au)							
Caloma	0	0	0	0	0	0	0
Stockpiles	329	1.0	0	0	329	1.0	11
Sub Total	329	1.0	0	0	329	1.0	11
Underground Reserves (cut-off 1.3g/t Au)							
Wyoming One	260	2.1	85	1.8	345	2.0	22
Caloma One	156	1.7	392	1.7	548	1.7	29
Caloma Two	26	1.5	252	1.8	278	1.8	16
Sub Total	442	1.9	729	1.7	1,171	1.8	68
TOTAL	771	1.5	729	1.7	1,500	1.6	79

Apparent arithmetic inconsistencies are due to rounding.
Open cut mining ceased at Tomingley during the year and the operation transitioned to fully underground mining at Wyoming One, Caloma One and Caloma Two.

Peak Hill Mineral Resources (as at 30 June 2023)

DEPOSIT	Resource Category	Cut-Off	Tonnes (Mt)	Gold Grade (g/t)	Gold Metal (koz)	Copper Metal (%)
Proprietary U/G	Inferred	2g/t Au	1.02	3.29	108	0.15
TOTAL			1.02	3.29	108	0.15

Apparent arithmetic inconsistencies are due to rounding

Boda-Kaiser Resource

DEPOSIT	INDICATED			INFERRED			TOTAL				METAL		
	Tonnes (Mt)	Au (g/t)	Cu (%)	Tonnes (Mt)	Au (g/t)	Cu (%)	Tonnes (Mt)	AuEq (g/t)	Au (g/t)	Cu (%)	AuEq (Moz)	Au (Moz)	Cu (Mt)
Open Pittable Resources (cut-off 0.3g/t AuEq)													
Boda	191	0.36	0.17	42	0.29	0.16	233	0.58	0.35	0.17	4.31	2.60	0.39
Kaiser	179	0.27	0.20	10	0.29	0.14	189	0.54	0.27	0.19	3.28	1.66	0.37
Subtotal	370	0.32	0.18	52	0.29	0.16	422	0.56	0.31	0.18	7.59	4.26	0.76
Underground Resources (cut-off 0.4g/t AuEq)													
Boda	151	0.34	0.20	198	0.34	0.18	350	0.59	0.34	0.18	6.63	3.78	0.65
Kaiser	16	0.30	0.22	8	0.36	0.20	24	0.61	0.32	0.21	0.46	0.24	0.05
Subtotal	167	0.34	0.20	206	0.34	0.18	374	0.59	0.34	0.18	7.09	4.02	0.70
TOTAL	537	0.32	0.19	258	0.33	0.18	796	0.58	0.33	0.18	14.7	8.28	1.46

