



**DIVERSE PORTFOLIO OF NIOBIUM-
RARE EARTH ELEMENTS, LITHIUM, GOLD
& OTHER CRITICAL MINERAL PROJECTS**

Noosa Mining Conference

July 2024

ASX: CAZ



DISCLAIMER

The information contained herein that relates to exploration targets and exploration results is based upon information compiled or reviewed by Ms Tara French and Mr Don Horn, who are employees of the Company. Ms French and Mr Horn are both Members of the Australasian Institute of Geoscientists and have sufficient experience which is relevant to the style of mineralisation and type of deposit under consideration and to the activity which they are undertaking to qualify as a Competent Persons as defined in the 2012 Edition of the 'Australasian Code for Reporting of Exploration Results, Mineral Resources and Ore Reserves'. The Company confirms that it is aware the historical information contained herein was not reported in accordance with JORC 2012, it is not aware of any new information or data that materially affects the information included in the original reports. Ms French and Mr Horn both consent to the inclusion of their names in the matters based on the information in the form and context in which it appears.

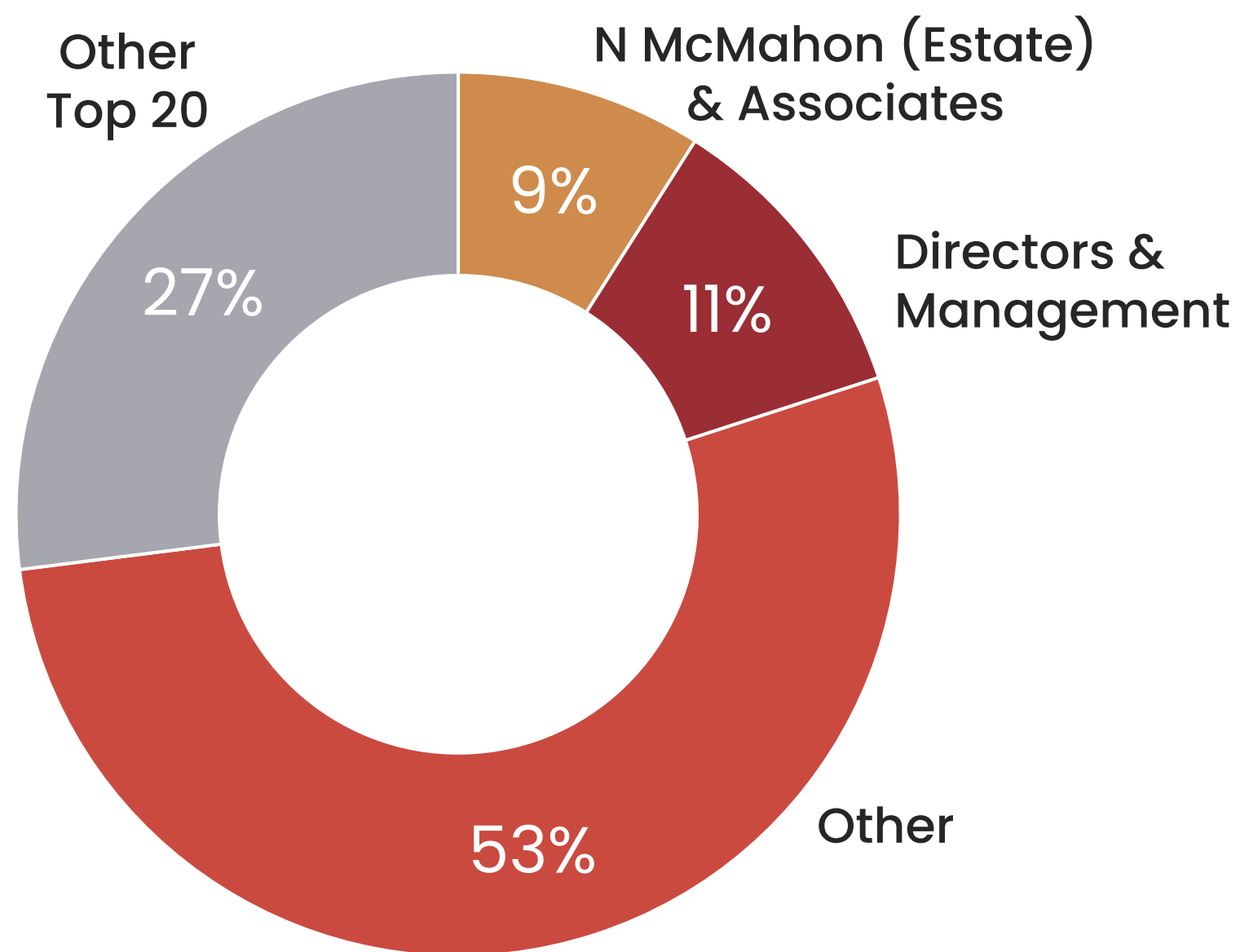
The information contained herein that relates to the Total Halls Creek mineral resource estimation includes the Mount Angelo North Mineral Resource, based on information compiled by Ms Vanessa O'Toole Principal Consultant of Honey Mining and Resources Pty Ltd, a Competent Person, who is a Member of The Australasian Institute of Mining and Metallurgy. The information contained herein that relates to the Total Halls Creek mineral resource estimation includes the Bommie porphyry copper mineral resource estimation, based on work completed by Mr Stephen Hyland, a Competent Person and Fellow of the AusIMM. Mr. Hyland is Principal Consultant Geologist with Hyland Geological and Mining Consultants (HGMC), who is a Fellow of the Australian Institute of Mining and Metallurgy. Mr Hyland is also a Qualified Person under the rules and requirements of the Canadian Reporting Instrument NI43-101.

Both Ms. O'Toole and Mr Hyland hold relevant qualifications and experience as qualified competent persons for public reporting according to the JORC Code in Australia and consent to the inclusion herein of the matters based on their information in the form and context in which it appears.

The Company confirms that it is not aware of any new information or data that materially affects the information included in the original market announcements and in the case of estimates of Mineral Resources or Ore Reserves, that all material assumptions and technical parameters underpinning the estimates in the relevant market announcement continue to apply and have not materially changed. The company confirms that the form and context in which the Competent Person's findings are presented have not been materially modified from the original market announcement.

Certain statements contained in this presentation, including information as to the future financial or operating performance of Cazaly Resources Limited and its projects, are forward-looking statements. Forward-looking statements include, but are not limited to, statements concerning Cazaly's planned exploration program(s) and other statements that are not historical facts. When used herein, the words such as "could," "plan," "estimate," "expect," "intend," "may", "potential," "should," and similar expressions are forward looking statements. Although Cazaly believes that its expectations reflected in these forward-looking statements are reasonable, such statements involve risks and uncertainties and no assurance can be given that actual results will be consistent with these forward-looking statements. The forward-looking statements contained herein reflect views held only as at the date of this presentation. The Company has not fully completed feasibility studies on any of its projects. Accordingly, there is no certainty that such projects will be economically successful. Mineral resources that are not ore reserves do not have demonstrated economic viability.

SHAREHOLDERS & CAPITAL STRUCTURE



Capital Structure	
Share Price (01 July 2024)	\$0.02
Cash/Investments (31 March 2024)	\$6.1M
Market Capitalisation	\$9.2M

Number	Equity Class
461.3M	Fully Paid Ordinary Shares
10.5M	Options Exp 12/10/24 to 13/12/26 Exercise prices \$0.045 to \$0.06

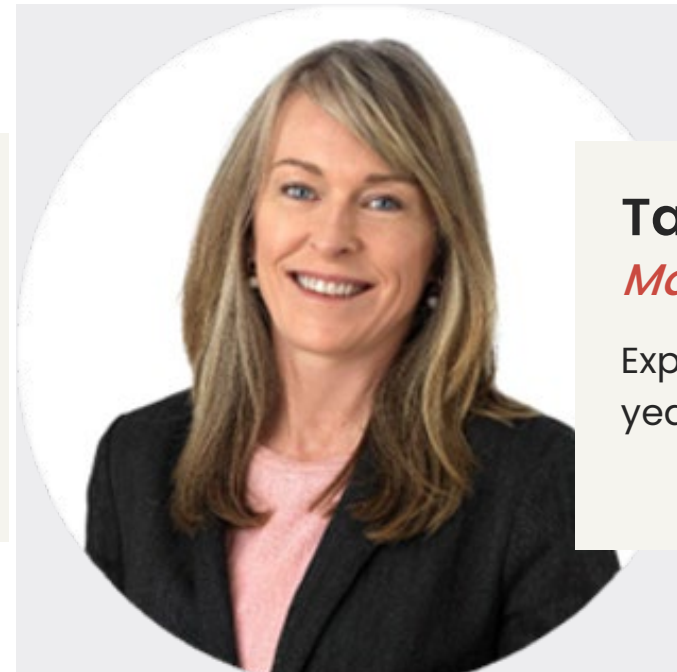
Iron Ore Royalties	
Parker Range (ASX:MIN)	Royalty retained A\$0.50/t after 1 st 10Mt
Hamersley (ASX:EQN)	Royalty retained US\$0.30/t

BOARD & MANAGEMENT



Clive Jones
Chairman

Founding Director of Cazaly,
+35 years' industry experience
in the mineral & energy sectors



Tara French
Managing Director

Exploration Geologist, +25
years' industry experience



Don Horn
Exploration Manager

Exploration Geologist, +30 years
of experience in mineral
exploration



Terry Gardiner
Non-Executive Director

+25 years' experience in capital
markets, corporate advising,
stockbroking



Jonathan Downes
Non-Executive Director

+30 years' experience in the
mineral & energy sectors.
Founding director of Moly
Mines Ltd, Siberia Mining Corp. Ltd

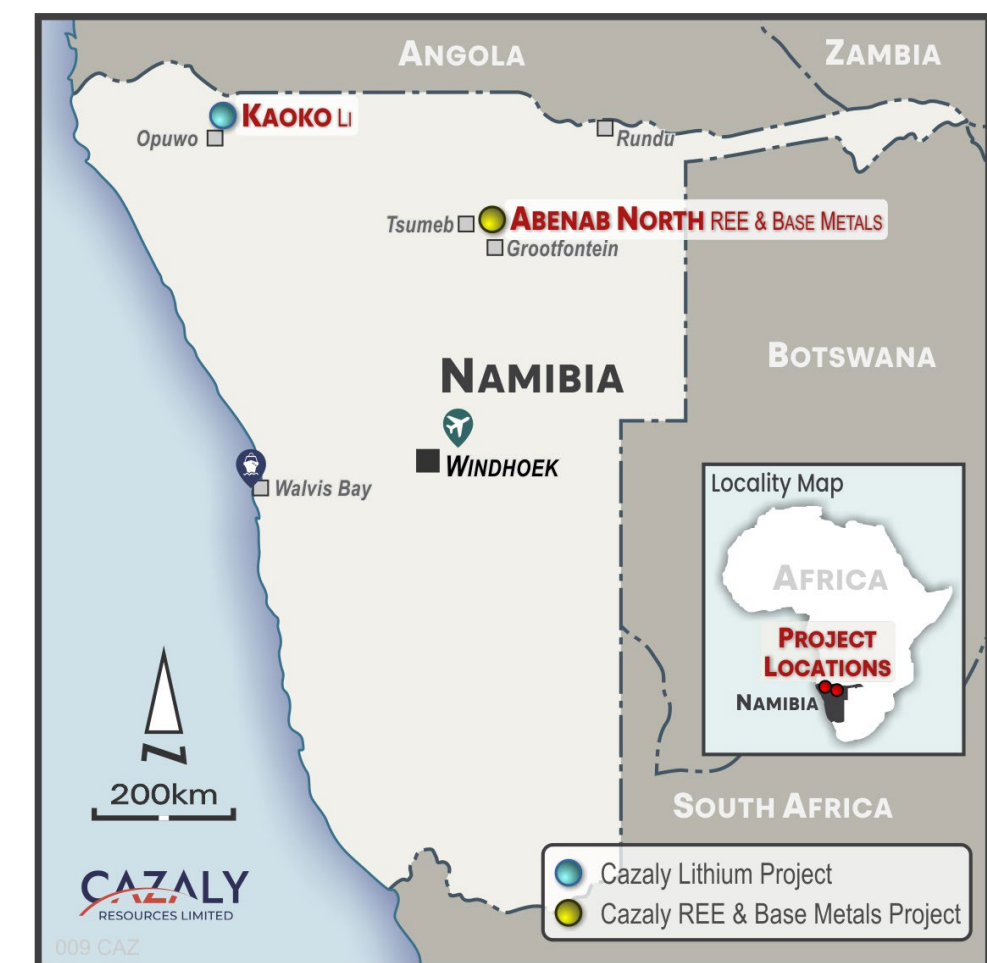
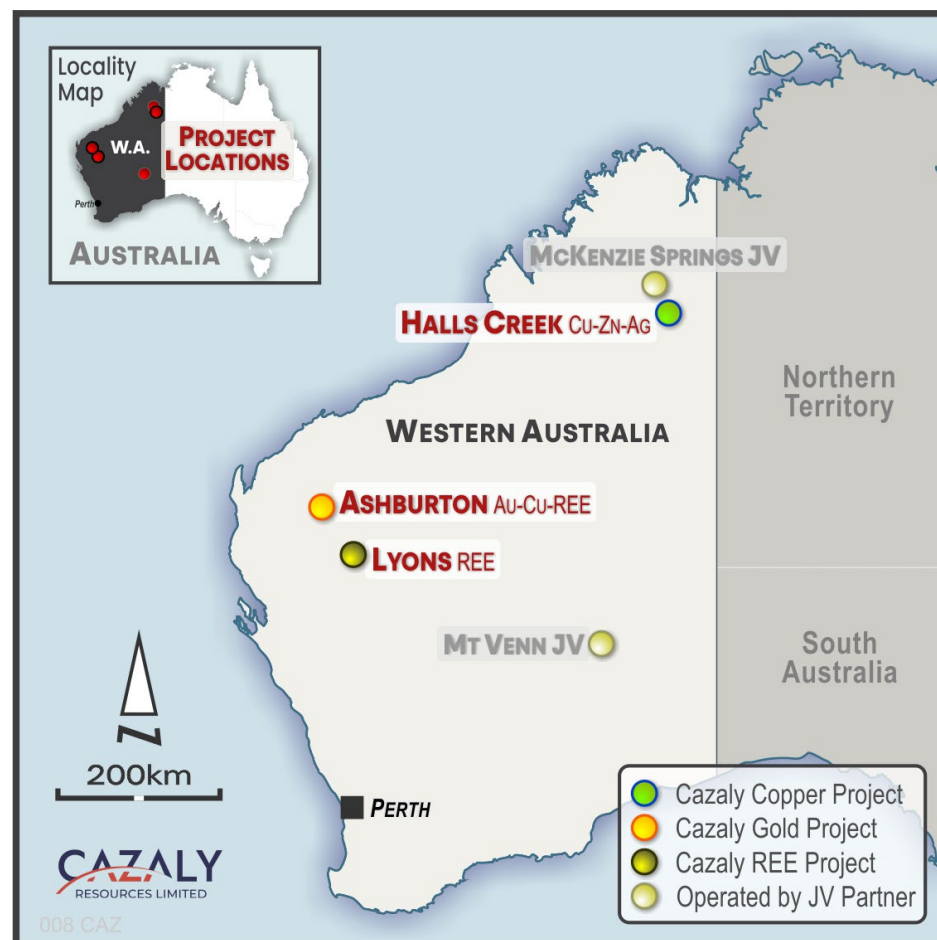


Mike Robbins
Company Secretary

+30 years' resource industry
experience at operational and
corporate levels

CAZALY – A DIVERSE INTERNATIONAL PORTFOLIO

Australian based resource exploration company that operates internationally, holding a diverse portfolio of mineral projects in Canada, Australia and Namibia



Focus on Carb Lake Nb-REE & Kaoko Li and realise value from other projects

CARB LAKE Nb-REE PROJECT (CAZ 100%)



CARB LAKE Nb-REE PROJECT

LARGE SCALE CARBONATITE

- Coincident with **+3km diameter magnetic anomaly**
- Located in the Red Lake district, a well known mining province in Canada

LARGELY UNEXPLORED

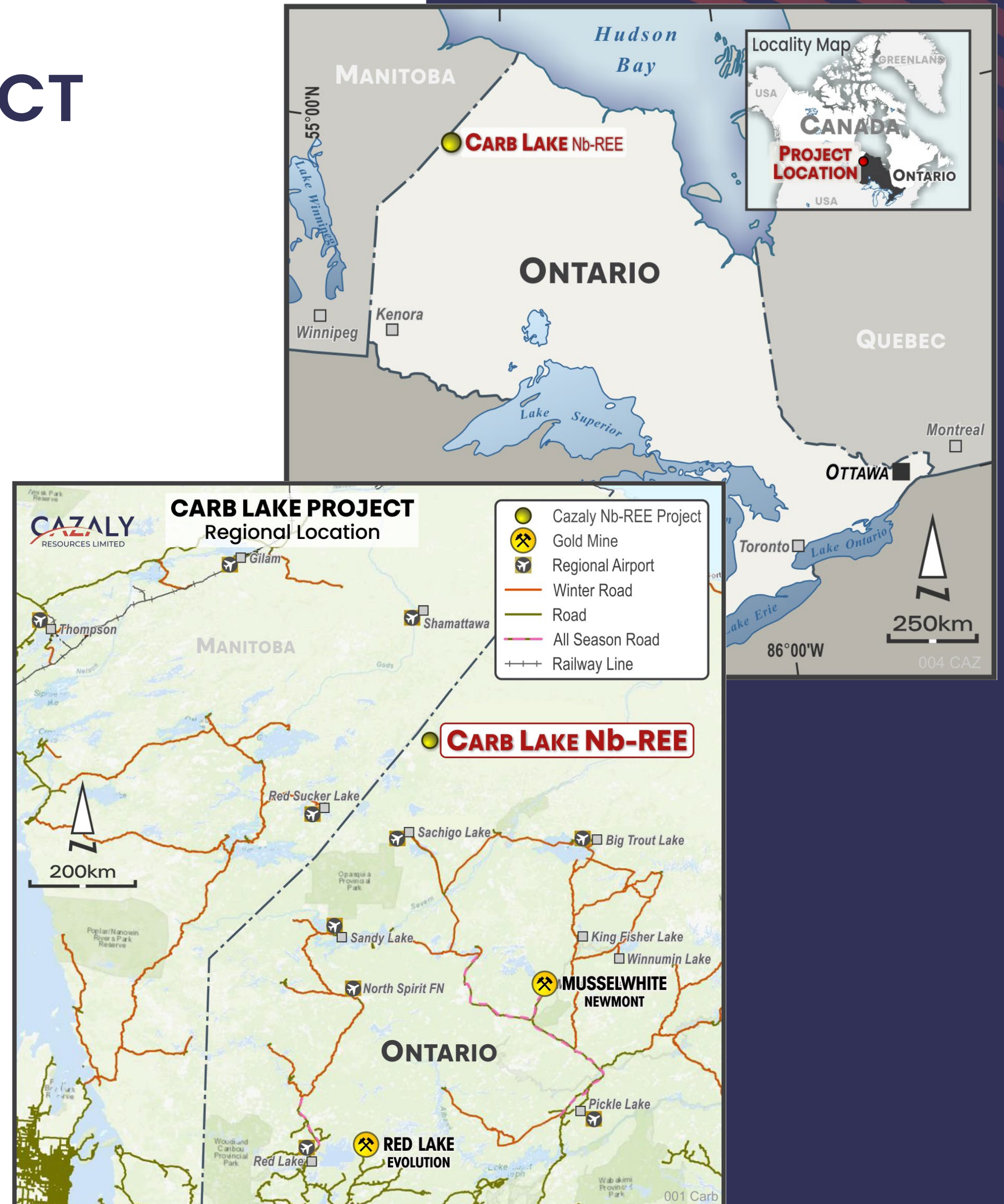
- 1960's - four diamond drill holes (niobium exploration)
- 2011 - geophysical survey
- **No exploration drilling in over 50 years**

ANOMALOUS Nb & REE ASSAYS

- Two samples from drill hole 4 returned:
>5% Cerium, >1% Lanthanum, >0.5ppm Niobium
- **Best Niobium assay 7.1%**

DRILLING APPROVALS IN PLACE

- **Drilling scheduled to start in late July – early August**



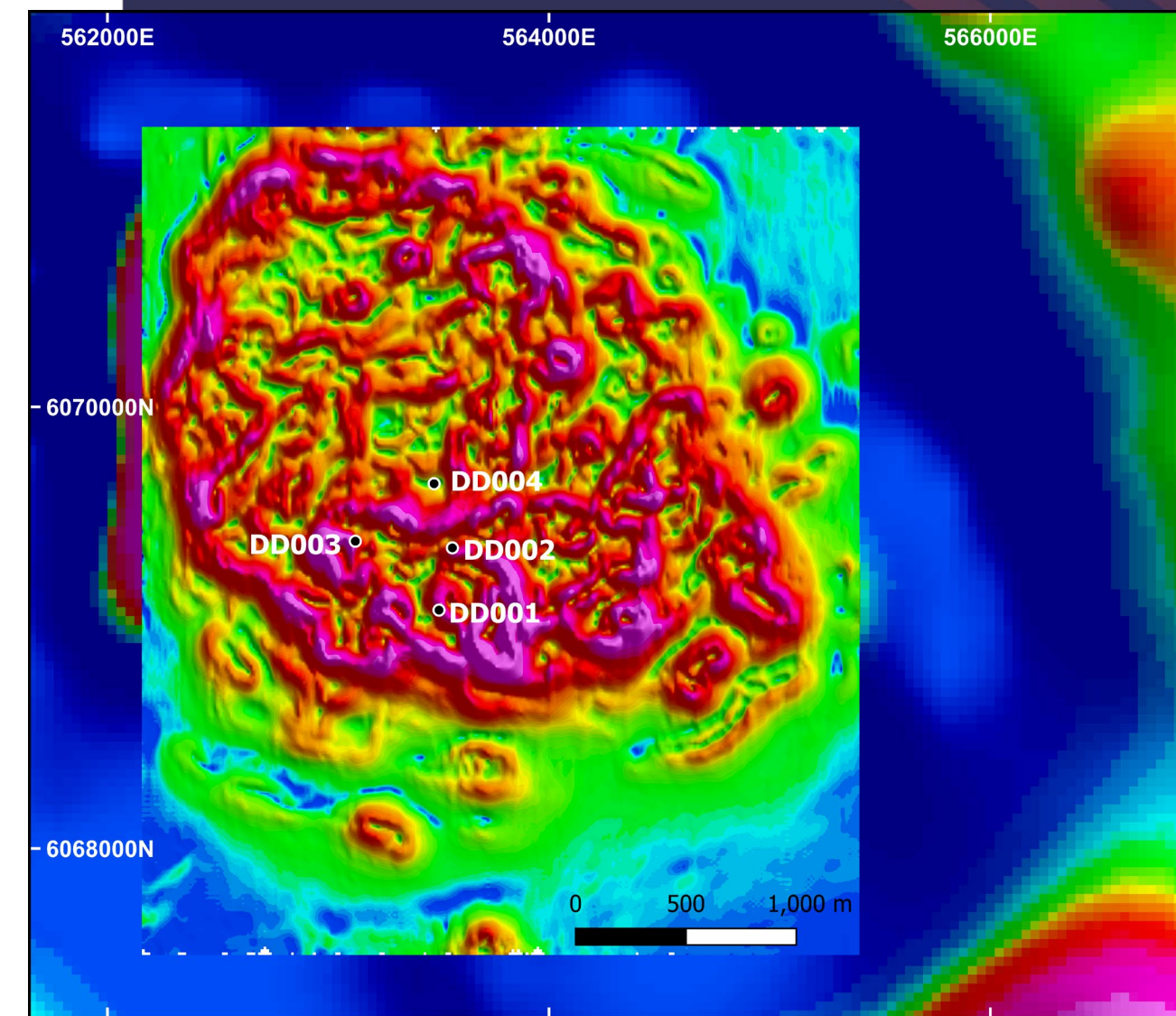
CARB LAKE Nb-REE PROJECT

MINERALISED CARBONATITES – SIZE COMPARISON

Carbonatite Complex	Company	Location	Diameter (km)	Stage
Araxa	CBMM	Brazil	5	Producing
Carb Lake	Cazaly Resources	Canada	>3	Exploration
Mount Weld	Lynas Rare Earths	Australia	3	Producing
Pachpadra	WAI	Australia	Ellipse 3 x 1	Exploration
Nechalacho	Vital Metals	Canada	2	Producing
Kangankunde	Lindian Resources	Malawi	0.8	Development

Cautionary Statement

The table above is presented to illustrate only the size of carbonatite complexes around the world. It should not be considered a comparison of company or project, a number of the projects in the table above are in development or production. The Carb Lake Carbonatite is in the early exploration stage and there is no certainty that further exploration work will result in determination of an economic mineral resource.



LARGE SCALE CARBONATITE

LARGELY UNEXPLORED

CARB LAKE Nb-REE PROJECT

EXPLORATION HISTORY

1960

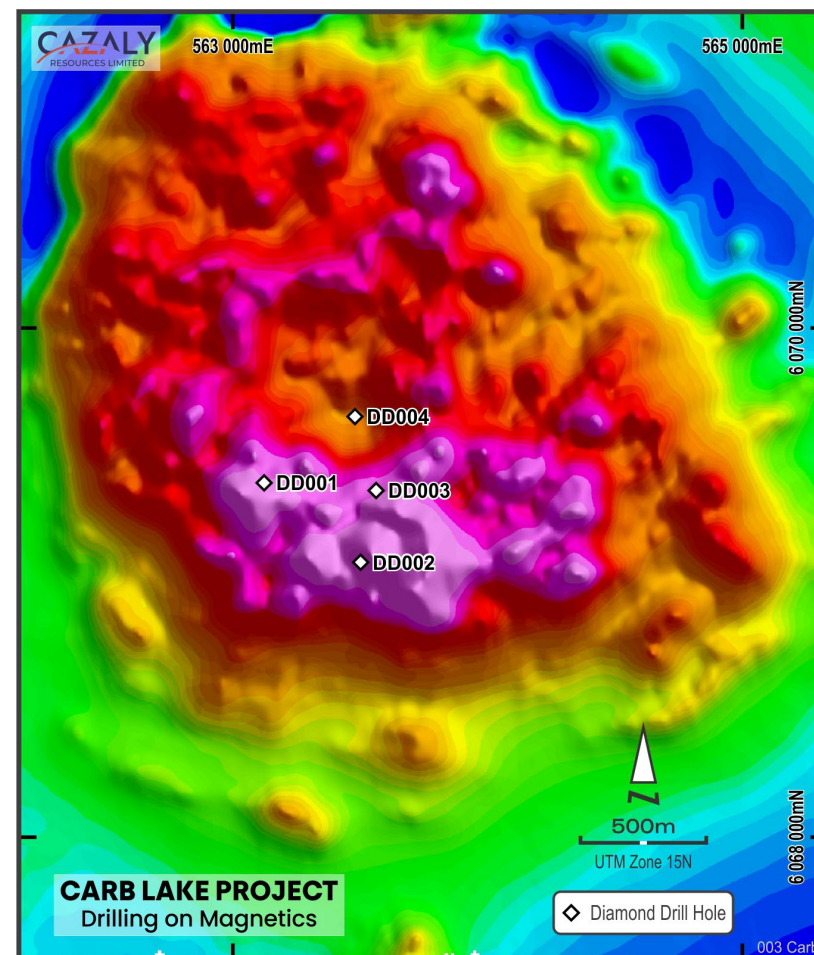
1960s

Magnetics, Radiometrics flown

Late 1960s

Niobium exploration
- Four drill holes,
average hole
depth 140m – **NO
ASSAY RESULTS**

*Drilling confirms
mineralised
carbonatite (Ce, La
carbonates)*



1980

1980s

Samples were re-analysed by the Ontario Geological Survey for major oxides and 24 trace elements including 2 REE's (Ce, La) and Nb

Two samples from drill hole 4 returned: **>5% Cerium, >1% Lanthanum, >0.5ppm Niobium**

The best **Niobium result was 7.1%**



2020

2010s

After China cut exports to Japan, supply concerns saw REE prices surge over 200%

Countries and producers scrambled for new REE sources, interest in Carb Lake was renewed

South American Rare Earth Corp (SAREC) flew **detailed aeromagnetics**

SAREC also completed surface soil sampling across the carbonatite. No other work was completed

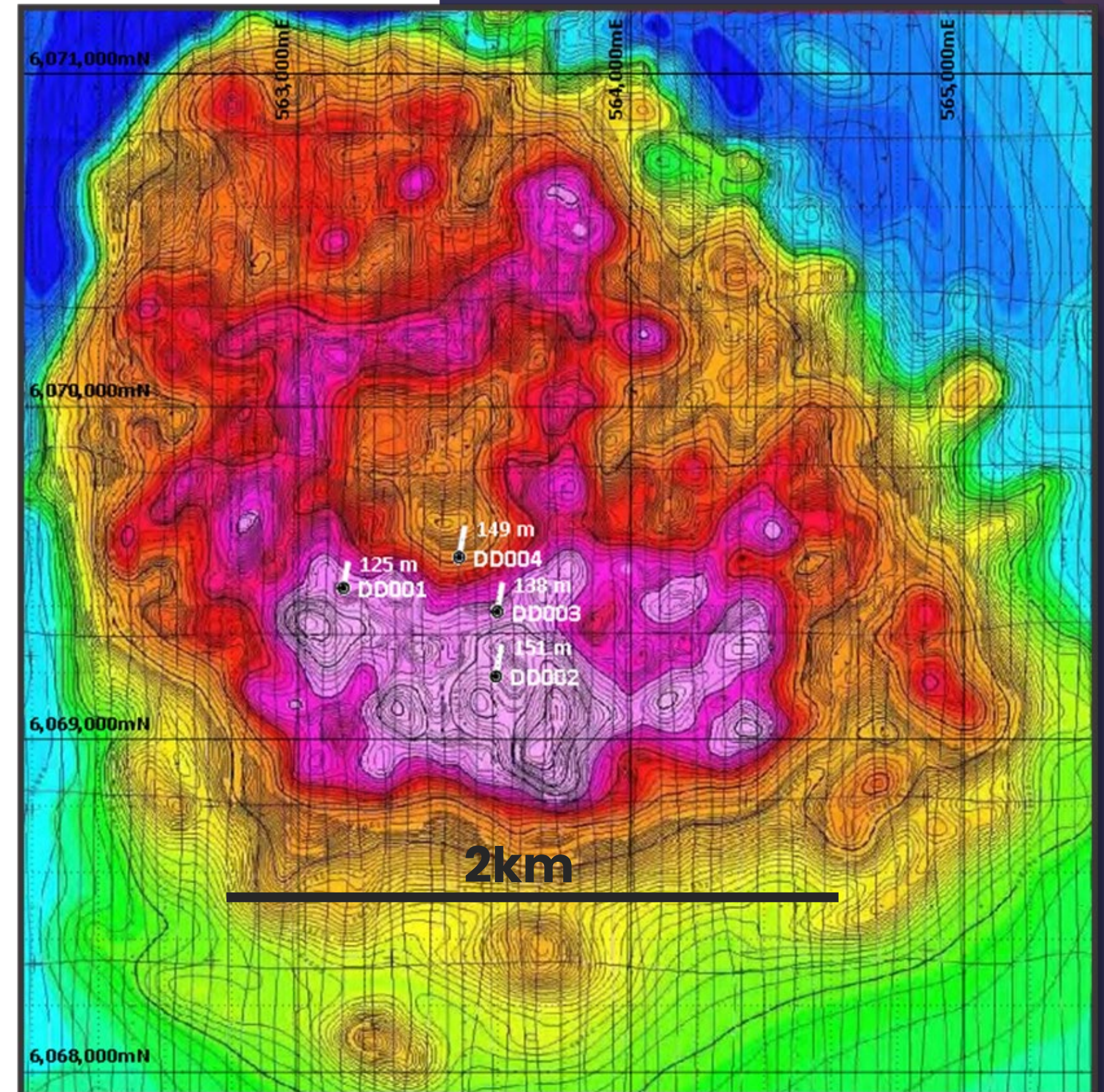
CARB LAKE Nb-REE PROJECT

CAZALY CONFIRMS REEs

- **pXRF program** completed on available diamond drill core
- Anomalous Niobium (Nb); and Rare Earth Elements (REEs) – Lanthanum (La), Cerium (Ce), Neodymium (Nd), and Praseodymium (Pr) confirmed with pXRF
- Best pXRF results include:
 - **Pr 0.42%, Nd 1.49%, La 3.36%, Ce 4.34%, and Nb 0.6%**



DD002 Diamond drill core

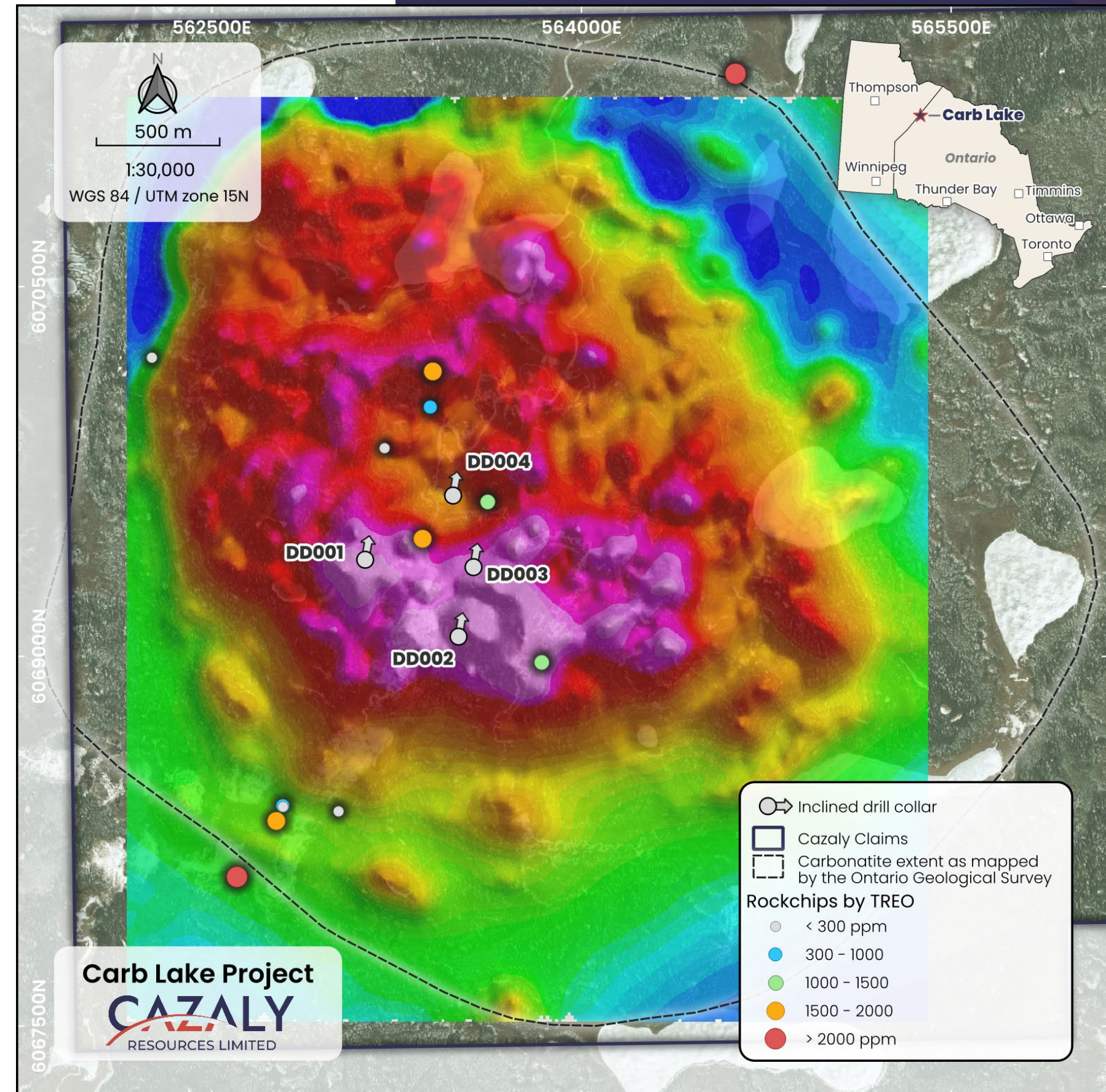
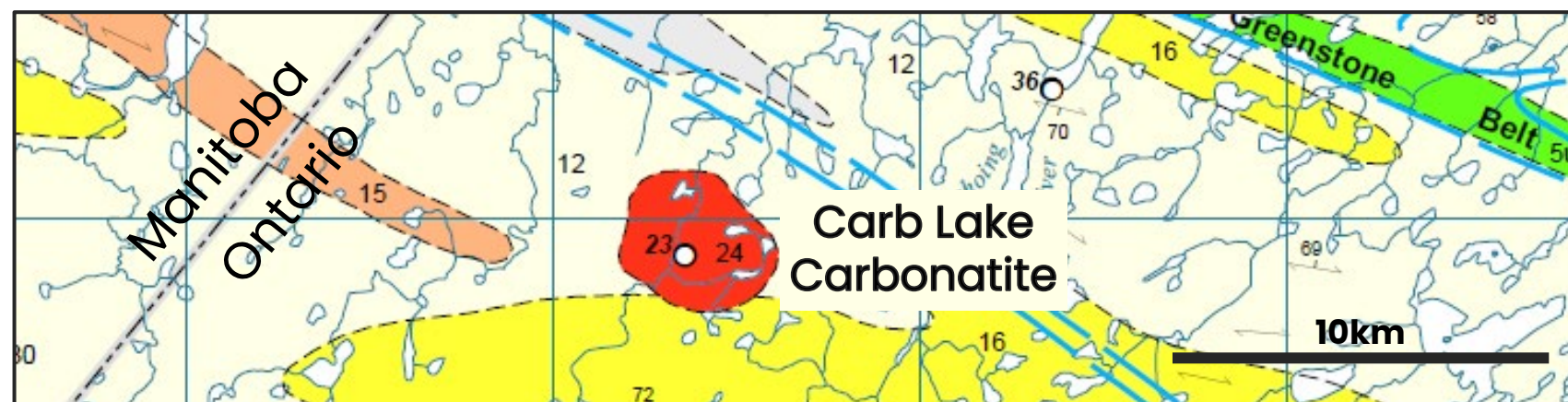


Aeromagnetic TMI of large circular carbonatite with variation in the magnetics showing partial ring structures with a magnetic low in the centre extending to the north-eastern margin of the intrusive

CARB LAKE Nb-REE PROJECT

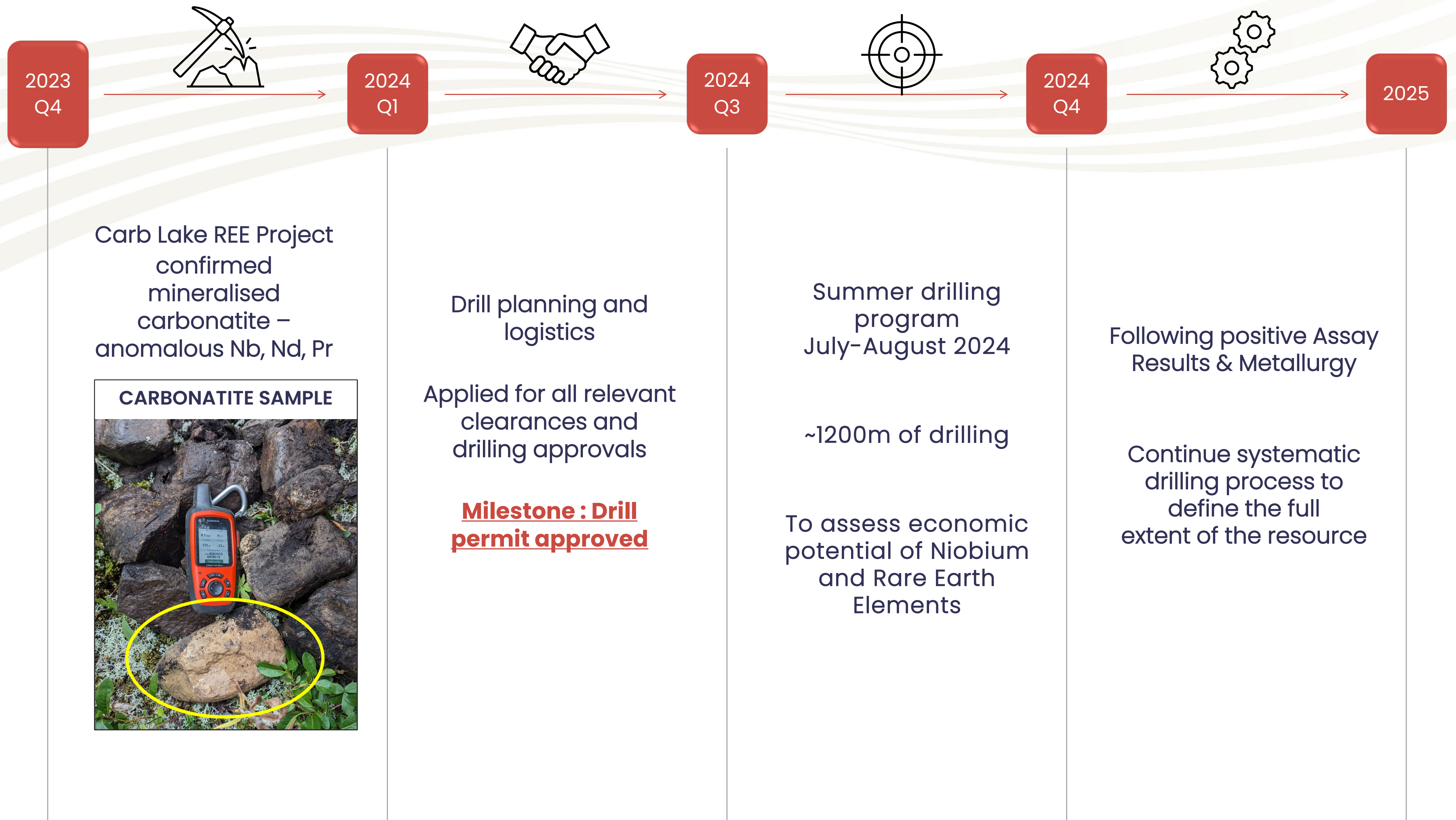
RECONNAISSANCE FIELD WORK

- Flat terrain, field crew traversed over 100km across the property in 4 days
- *Anomalous float samples* collected during initial reconnaissance field trip
- **TREO results up to 2482ppm; NdPr up to 25% of TREO; Nb up to 917ppm**



CARB LAKE Nb-REE PROJECT

CATALYST TIMELINE



SUNDOWN LITHIUM PROJECT (CAZ 25%)



SUNDOWN LITHIUM PROJECT

WORLD CLASS LITHIUM PROVINCE

LARGE PEGMATITE FIELD IN JAMES BAY

- Acquired 25% on acquisition early August 2023
- **>260km² tenure package, containing +200 mapped pegmatite outcrops**

QUEBEC – TIER 1 MINING JURISDICTION

- Excellent infrastructure
- Geopolitically stable
- Progressive ESG practices

LIMITED LITHIUM EXPLORATION

- Reconnaissance rock chip sampling completed late 2023
- Only 1% of the total project area tested
- Results confirm fertile granites



NAMIBIAN CRITICAL MINERALS (CAZ 95%)

KAOKO LITHIUM
ABENAB NORTH REE
& BASE METALS



KAOKO LITHIUM PROJECT

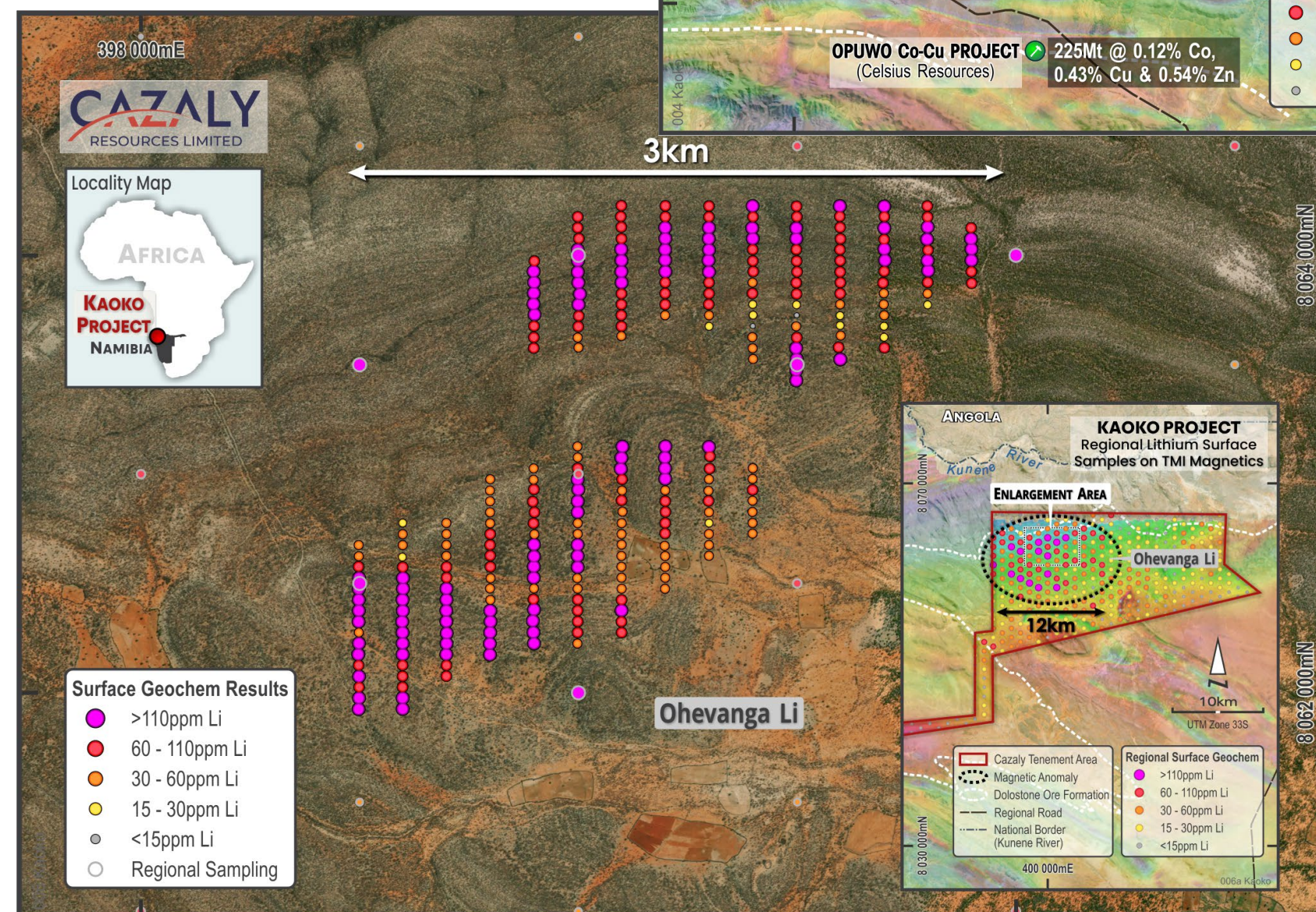
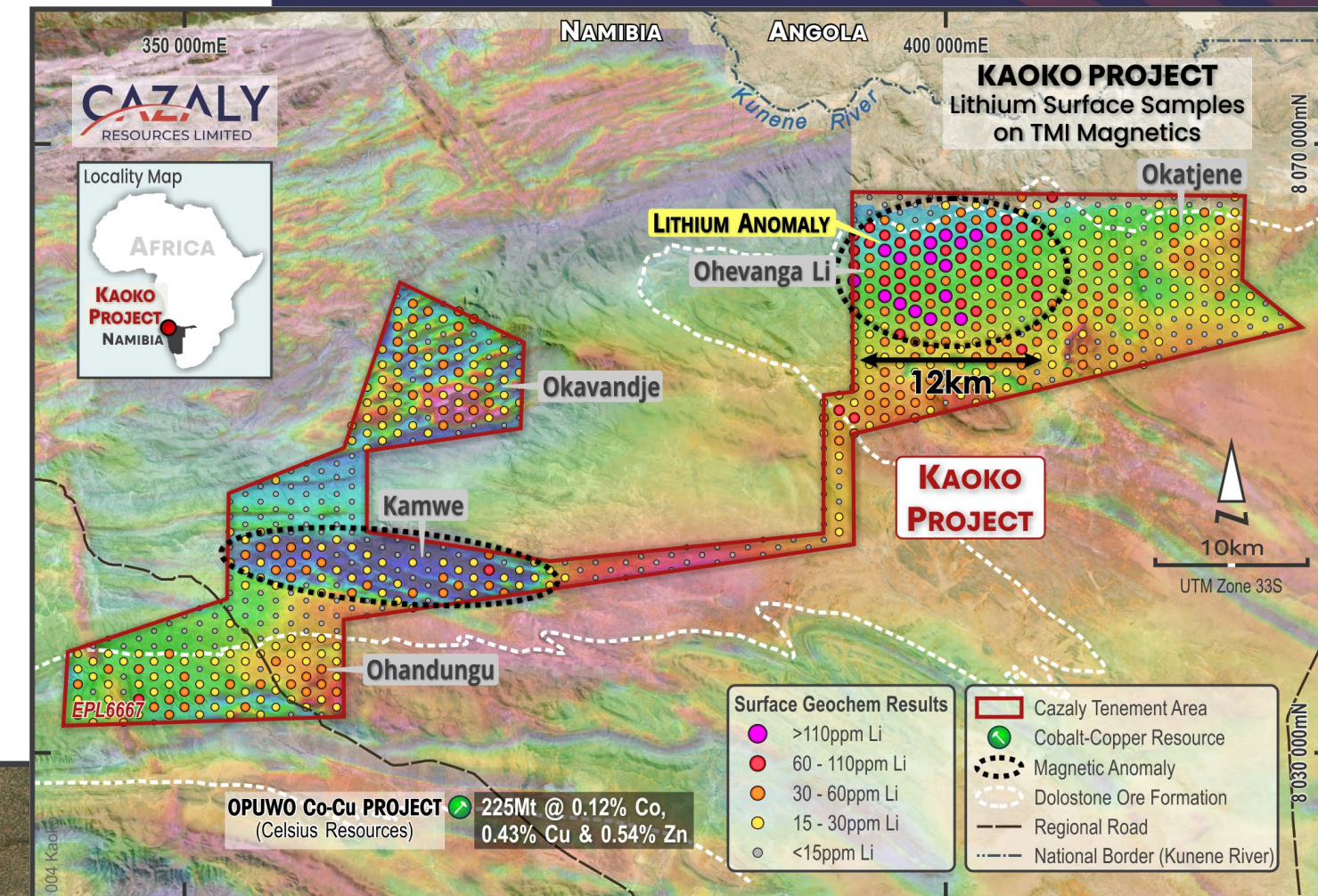
LARGE LITHIUM TARGET – 120km² SOIL ANOMALY

- **DRILL READY**
- Located 50km north of Opuwo, the regional capital
- The project is easily accessible by road ~800km from the capital Windhoek and ~750km from Walvis Bay port facility
- Excellent road highways and infrastructure
- Stable mining jurisdiction



KAOKO LITHIUM PROJECT

- Kaoko comprises exploration licence **EPL6667** covering **~700km²**
- **Large-scale lithium soil anomaly** at the *Ohevanga* prospect extends over **12km** strike
- Infill soil sampling confirms **contiguous stratiform lithium anomaly**
- Potential for **large sediment hosted lithium deposit**
- **RC drilling planned, environmental surveys completed, & approvals in place**
- **Drilling scheduled for Q3**



ABENAB NORTH REE & BASE METALS PROJECT

- Licence application over **790km²**, approval pending
- Historical drilling confirmed **mineralised carbonatites**
- Located in a **well mineralized base metals province** with production from several mines in the district including Tsumeb and Kombat
- The project is easily accessible by road ~450km from the capital Windhoek, located between the well serviced towns of Tsumeb and Grootfontein

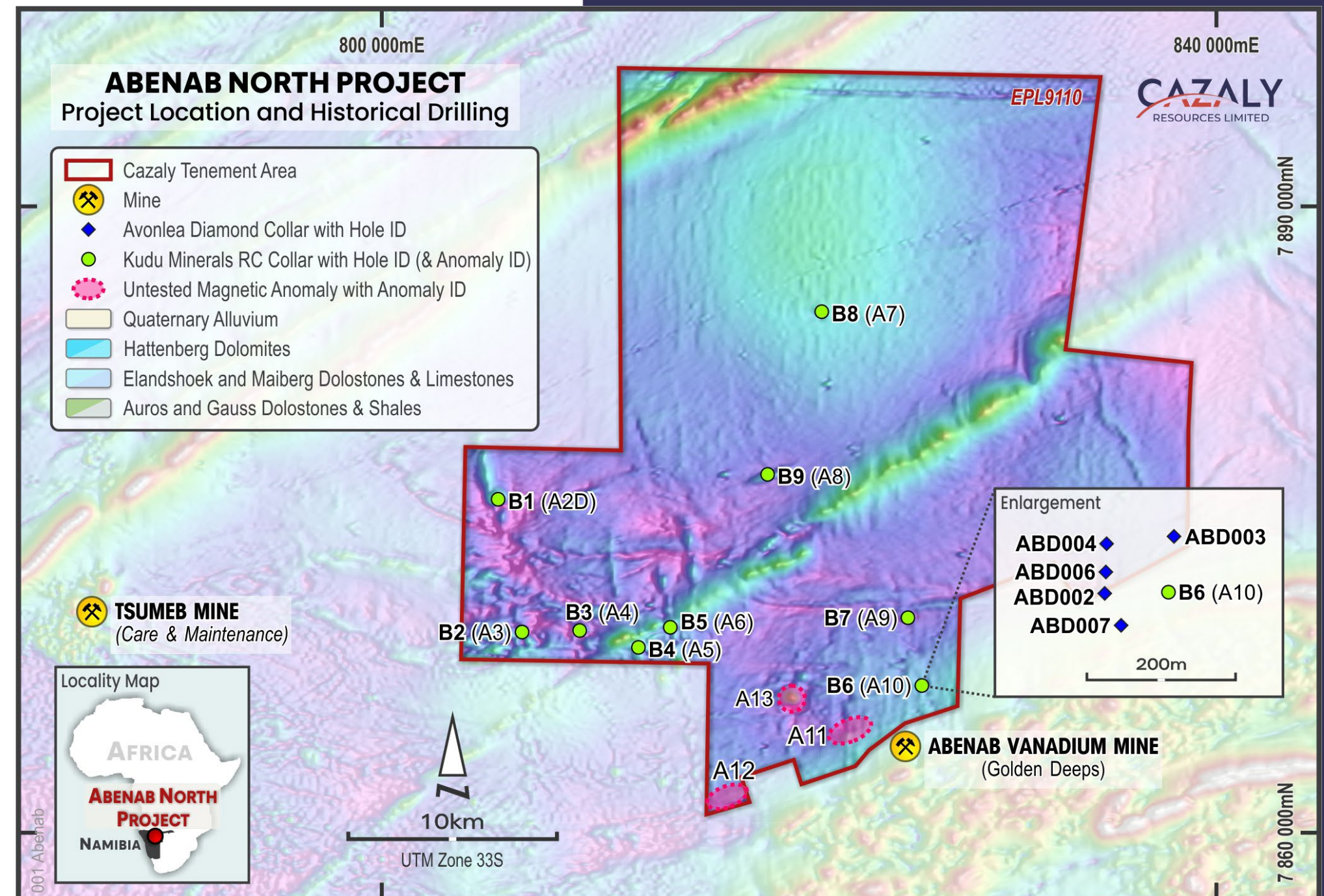


Abenab Lodge located at the historic Abenab Vanadium Mine, Grootfontein.



ABENAB NORTH REE & BASE METALS PROJECT

- **Multiple mineralised carbonatite pipes**
- **Significant REE mineralisation in several drill holes including:**
 - **45m @ 0.73% TREO** to end of hole (including **4m @ 2.53%**)
 - **39.7m @ 0.55% TREO** (including **3.6m @ 1.22%**)
- Highest REE assays reported were La, Ce, Nd, and Pr with **several results beyond maximum assay detection limits**
- Large magnetic anomalies identified for follow-up including A13, A11 and A12.



AUSTRALIAN PROJECTS (100%)

HALLS CREEK PROJECT
COPPER – ZINC – SILVER

ASHBURTON PROJECT
REE, GOLD, BASE METALS

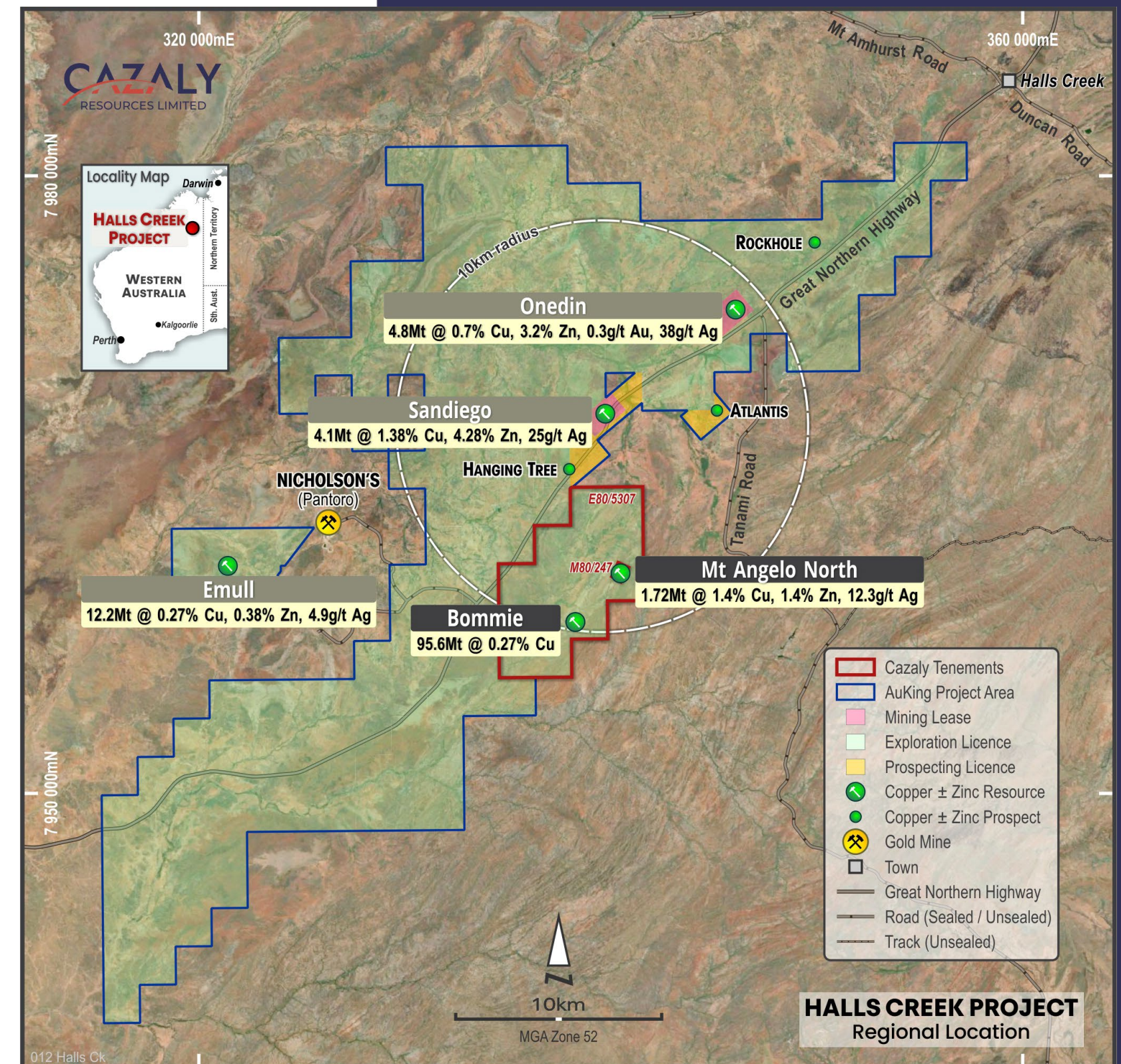
LYONS PROJECT
REE



HALLS CREEK COPPER-ZINC-SILVER

COPPER RESOURCES DEFINED

- **Advanced project**, copper resources, early development scoping stage
- Mount Angelo North & Bommie deposits have a combined MRE of 97.3Mt for 285,000 tonnes contained copper
- **AuKing completed a scoping study¹** under an MoU with Cazaly for the development of a consolidated base metal **mining hub centred at the Sandiego deposit**
- **Key Findings:**
 - **11-year mine life**, mining each of the Sandiego, Mt Angelo North, Onedin and Bommie deposits.
 - Estimated **\$134M development capex** to build a central processing plant near the Sandiego deposit.
 - **2.45 years payback**
 - **Pre-tax NPV₈ of \$177M**



¹ Cazaly's ASX announcement dated 1 June 2023

ASHBURTON GOLD-BASE METALS-REE

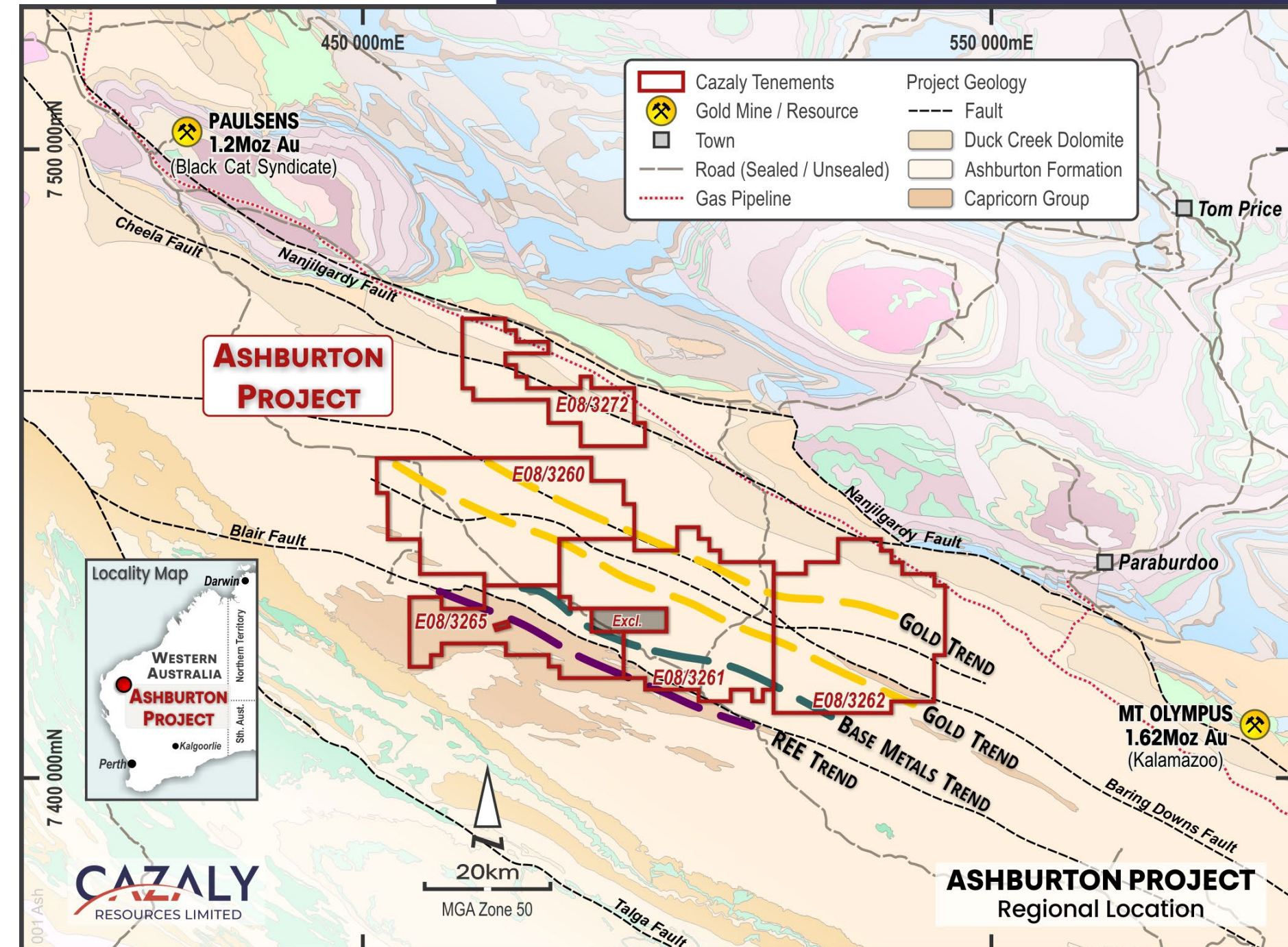
LARGE-SCALE, UNDER EXPLORED PROJECT COVERING 2,450KM²

REGIONAL SCALE TRENDS

- 4 extensive mineralised trends identified:
 - 70km gold trend (x 2)
 - 50km copper trend
 - 50km REE trend
- Mineralised trends coincident with interpreted mantle tapping structures

PROJECT SCALE VTEM & GEOCHEM TARGETS

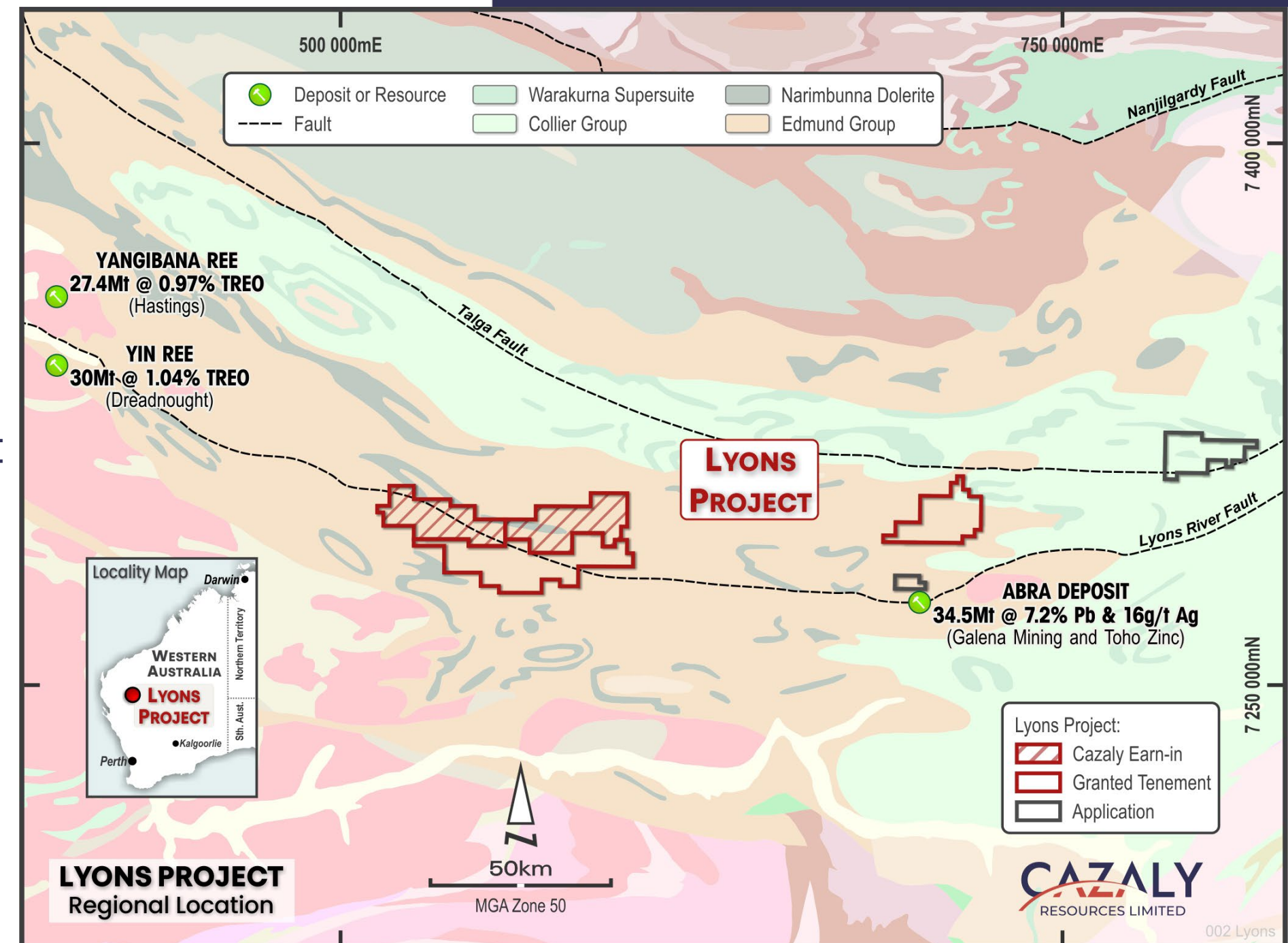
- Gold Prospect at New Finish 10km strike
- Copper Prospects:
 - **Cheela Plains** up to **32% Cu** rock chips
 - Warden Pool 7km strike
 - Ram Hole Creek 3km strike
 - Seven Mile Bend 5km strike
 - Cairn Hill Well 10km strike



LYONS REE PROJECT

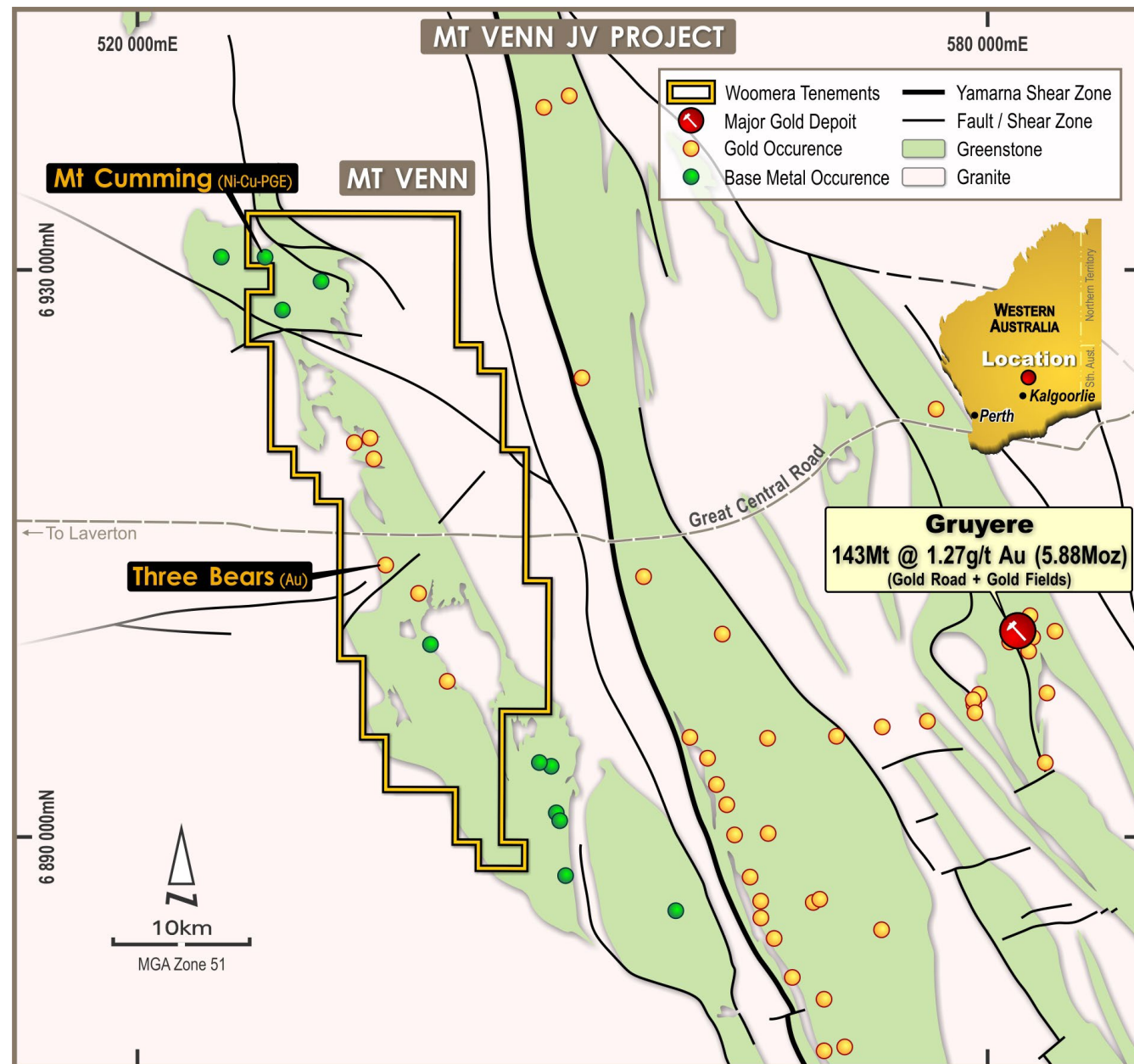
LARGE LANDHOLDING IN REE HOTSPOT

- Six tenements consisting **+1,000km² tenure** prospective for **REE and base metals** around the Lyons River Fault and Talga Fault in the Gascoyne Province
- Multiple phases of REE mineralisation are associated with the **Lyons River Fault**
- **Highly prospective region for REE** with two significant REE projects ~100km NE of CAZ tenement package:
 - **Hastings Technology Metals'** (ASX:HAS) Yangibana Project (**27.4Mt @ 0.97%** Total Rare Earths Oxides(TREO))
 - **Dreadnought Resources'** (ASX:DRE) Yin Project (**20.1Mt @ 1.03%** TREO)
- **Abra lead-silver JV mining operation** (60%: Galena Mining and 40%: Toho Zinc) lies adjacent to CAZ tenement package
- Initial fieldwork completed late last year 2023
- Anomalous Au, REE, Nb



AUSTRALIAN JV PROJECTS

GOLD, NICKEL, PGE's – MOUNT VENN (20% CAZ)



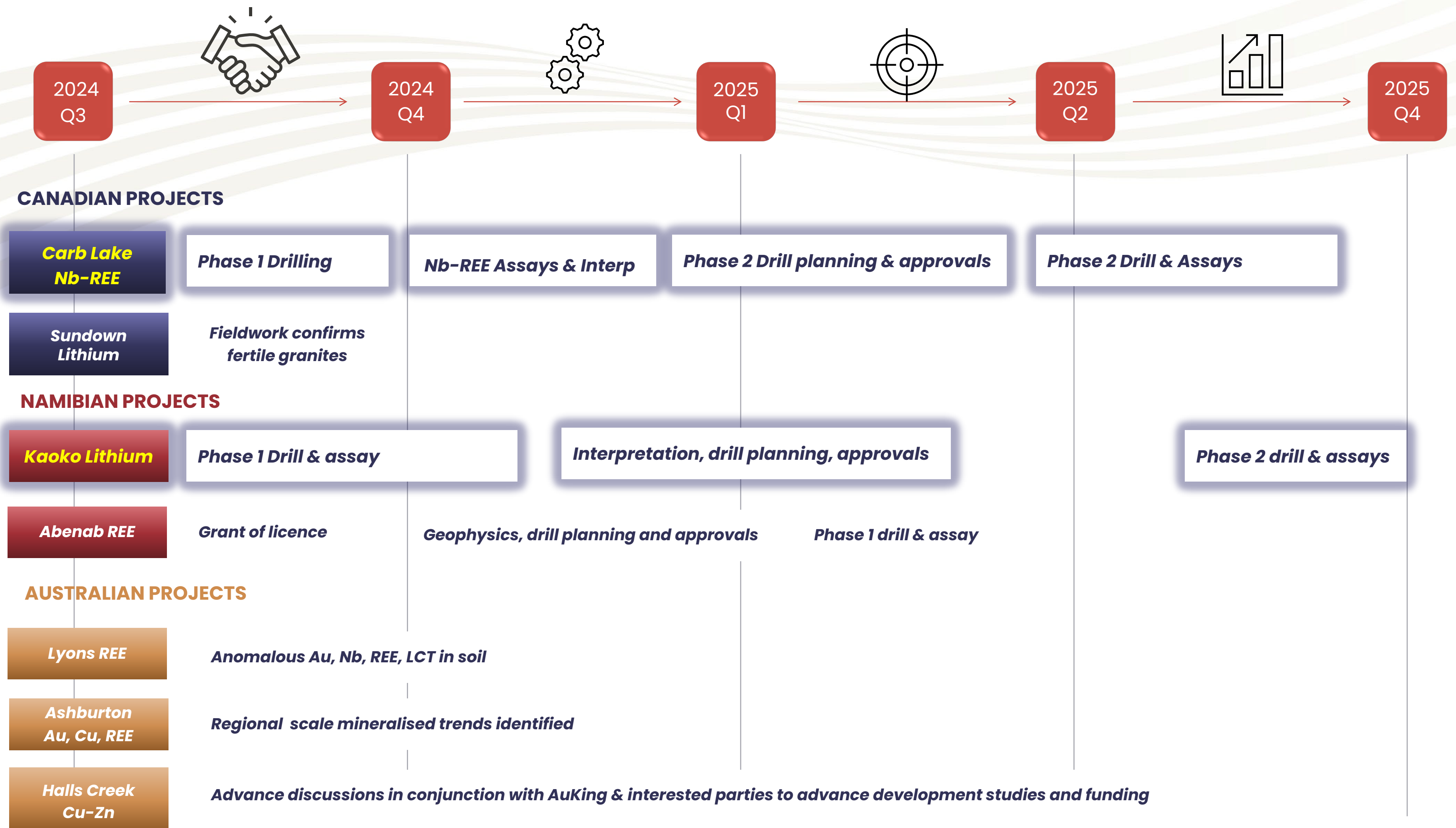
- **Tier 1 Location**
- 50km under-explored greenstone belt
- Prospective for **Gold and Nickel**

NICKEL & GRAPHITE – MCKENZIE SPRINGS (30% CAZ)

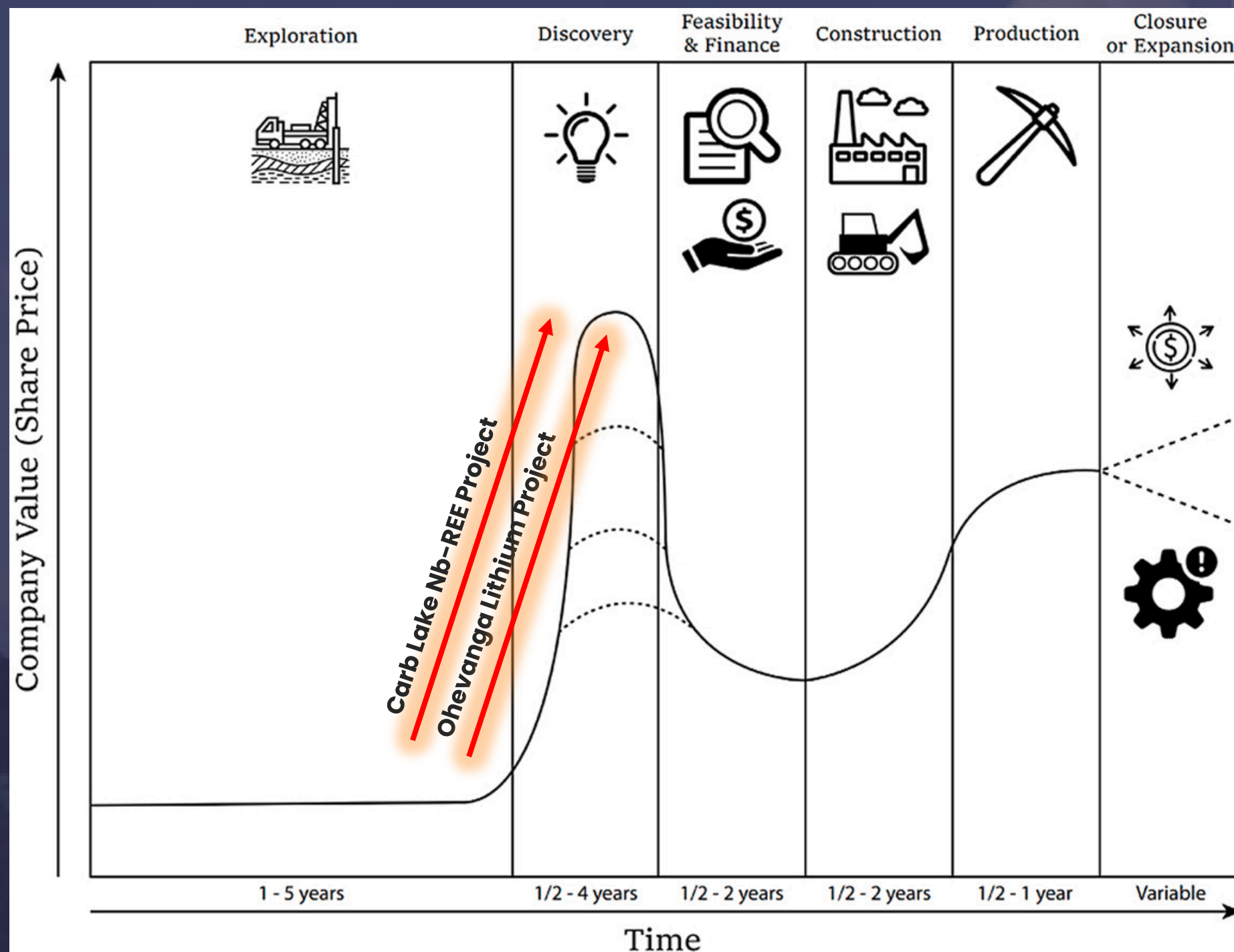
- **Nickel Sulphide** exploration in the Kimberley region of Western Australia
- **Proven mineral district**, along strike of the **Savannah Nickel Mine**
- Large project with over **13km of prospective basal contact** of host ultramafic units
- High grade gossan samples returned **12.8% Cu, 1.9% Ni, 0.2% Co**
- **Diamond drilling** completed by FIN identified **EM conductors** off hole and intersected **disseminated sulphides**




CARB LAKE & KAOKO FOCUS – TIMELINE BASED ON SUCCESS



THE INVESTMENT OPPORTUNITY





Experienced Board & management with strong track record for project generation

Value add and de-risk projects from exploration through to resource development

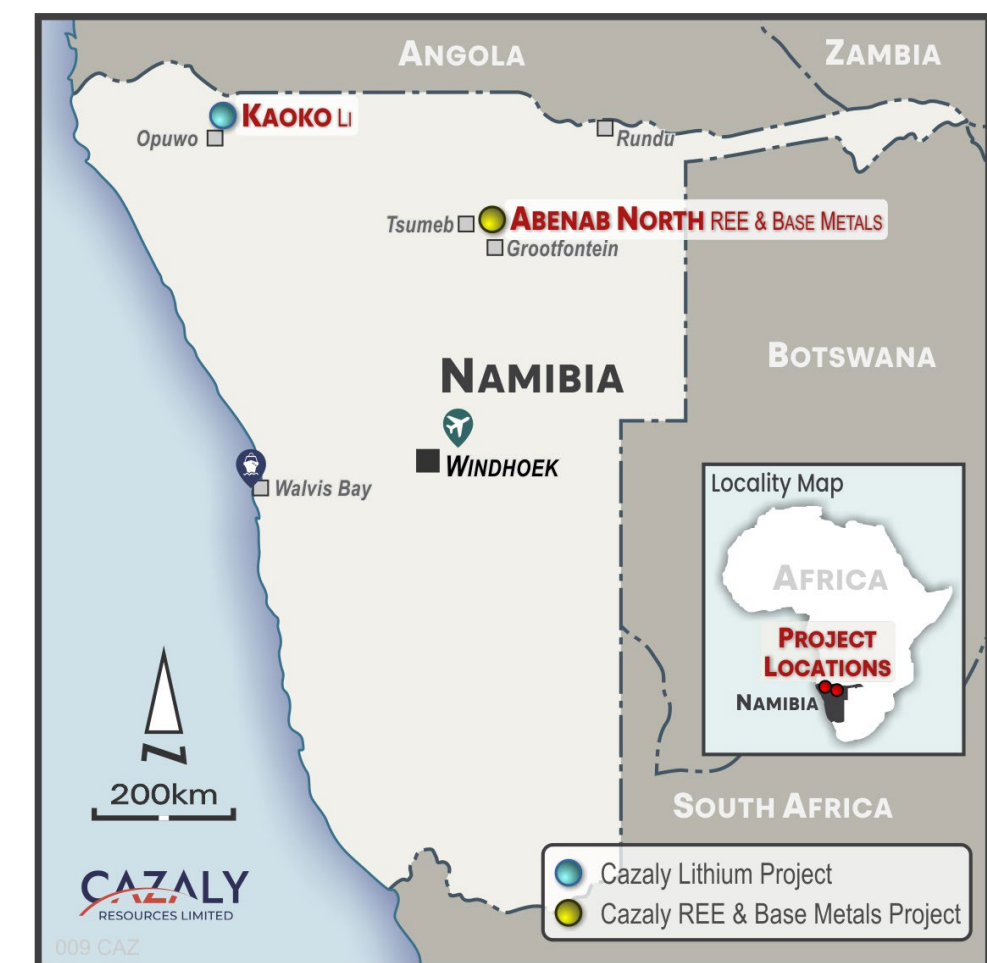
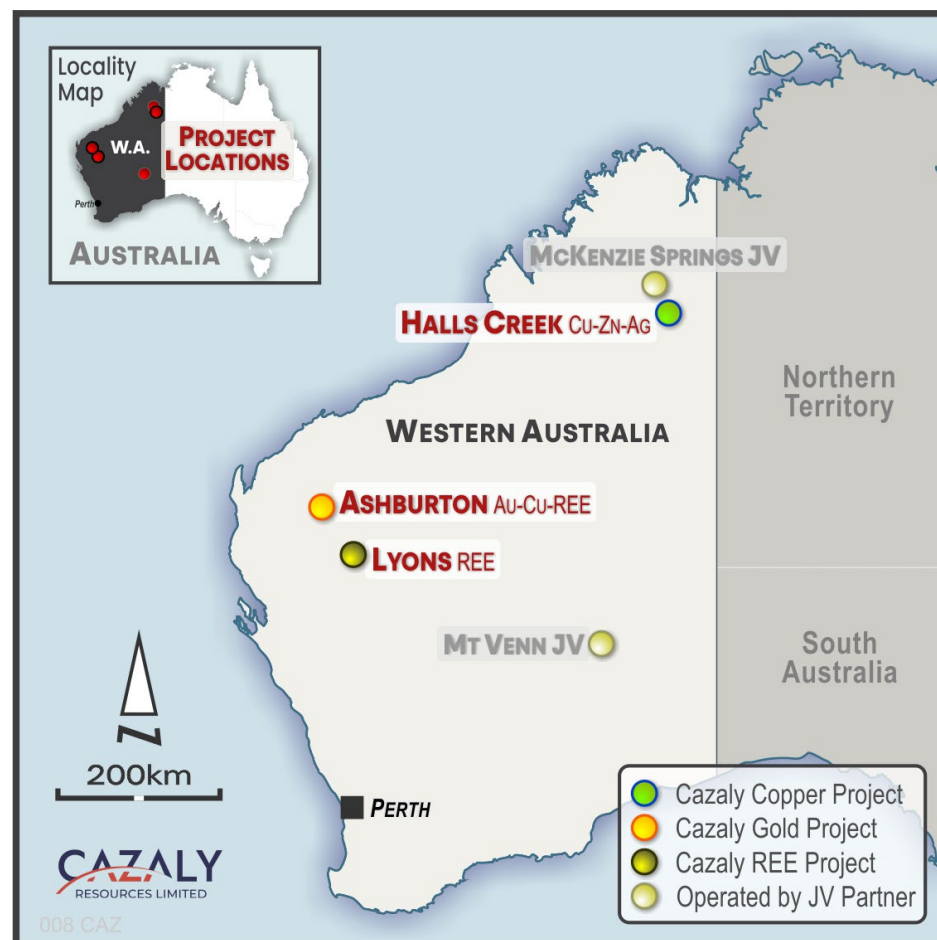


Maintain a pipeline of projects across a diverse portfolio of commodities with geographical exposure

Divest projects to generate income and return value to shareholders

CAZALY – A DIVERSE INTERNATIONAL PORTFOLIO

Australian based resource exploration company that operates internationally, holding a diverse portfolio of mineral projects in Canada, Australia and Namibia



Focus on Carb Lake Nb-REE & Kaoko Li and realise value from other projects