



Kameelburg Niobium-REE Flagship Project

**Targeting Maiden Niobium Drilling
End of Q3 2024**

ASX:ARN



The material in this Presentation has been prepared by Aldoro Resources Limited (“Aldoro”) and is general background information about Aldoro’s current activities as at the date of this presentation. This information is given in summary form and does not purport to be complete. Information in this presentation should not be considered as advice or a recommendation to investors or potential investors in relation to holding, purchasing or selling securities or other financial products or instruments and does not take into account your particular investment objectives, financial situation or needs.

Aldoro Resources Limited, its directors, officers, employees and agents disclaim liability for any loss or damage suffered by reliance on information contained in this report when making investment decisions. In addition, no express or implied representation or warranty is given in relation to the completeness and sufficiency of the information, opinions or beliefs contained in this document or any other written or oral information made or to be made available to any interested party or its advisors. Before acting on any information you should consider the appropriateness of the information having regard to these matters, any relevant offer document and in particular, you should seek independent financial advice. All securities and financial product or instrument transactions involve risks, which include (among others) the risk of adverse or unanticipated market, financial or political developments and, in international transactions, currency risk. This presentation may contain forward looking statements including statements regarding our intent, belief or current expectations with respect to Aldoro’s businesses, operations, market conditions, results of operation, financial condition, capital adequacy, specific provisions and risk management practices. Readers are cautioned not to place undue reliance on these forward-looking statements. Aldoro does not undertake any obligation to publicly release the result of any revisions to these forward-looking statements to reflect events or circumstances after the date hereof to reflect the occurrence of unanticipated events. While due care has been used in the preparation of forecast information, actual results may vary in a materially positive or negative manner. Forecasts and hypothetical examples are subject to uncertainty and contingencies outside Aldoro’s control. Past performance is not a reliable indication of future performance.

The information in this presentation has been derived from ASX releases over the past two years please see the JORC tables in these releases for compliance related information, see <https://www.aldororesources.com/announcements>.

The Company is not aware of any new information or data that materially affects the information included in this presentation compiled in July 2024.

Competent Persons’ Statements

The information in this presentation that relates to Exploration Results and other technical information complies with the 2012 Edition of the Australasian Code for Reporting of Exploration Results, Mineral Resources and Ore Reserves (JORC Code). It has been compiled and assessed under the supervision of Mark Mitchell, technical director for Aldoro Resources Ltd. Mr Mitchell is a Member of the Australasian Institute of Geoscientists (No.10049) and has sufficient experience that is relevant to the style of mineralisation and type of deposit under consideration and to the activity being undertaken to qualify as a Competent Person as defined in the 2012 Edition of the JORC Code. Mr Mitchell consents to the inclusion in this presentation of the matters based on his information in the form and context in which it appears.

Capital Structure

| | |
|---|-------------|
| Shares on issue | 134,623,743 |
| Options on issue | 28,405,714 |
| Share Price (at 22 nd July 2024) | \$0.084 |
| Market Capitalisation (undiluted) | \$11.3M |
| Cash Balance (at 31 March 2024) | \$0.738M |
| Enterprise Value | \$10.56M |

Board of Directors

| | |
|---------------|---------------------------|
| Quinn Lee | Non-Executive Chairperson |
| Mark Mitchell | Technical Director |
| Lincoln Ho | Non-Executive Director |
| Sarah Smith | Company Secretary |


Share Price and Volume




Shareholders

| | |
|--------------------|--------|
| Top 20 | 60.46% |
| Board & Management | 3.89% |



 **Kameelburg Niobium-REE
Flagship Project
(Namibia, Africa)**



-  **Western Australian Projects**
- Wyemandoo Li-Rb Project
 - Niobe Li-Rb-Ta Project
 - Narndee Au-Ni-Cu Project



Significant Carbonatite Size

Giant Carbonatite - 1.4km in diameter, rising 270m above ground



Extensive Project Area for Exploration

Three Exclusive Prospecting Licenses (EPLs) spanning 1,017km²



High Value Critical Mineral Potential

Niobium and REE highly leveraged to growth & energy transition



Mining Friendly Jurisdiction

Namibia: one of lowest sovereign risk countries in Africa



Excellent Project Infrastructure

Road, Rail & Power all running through Kameelburg Project area



Carbonatite Geology & Project Area

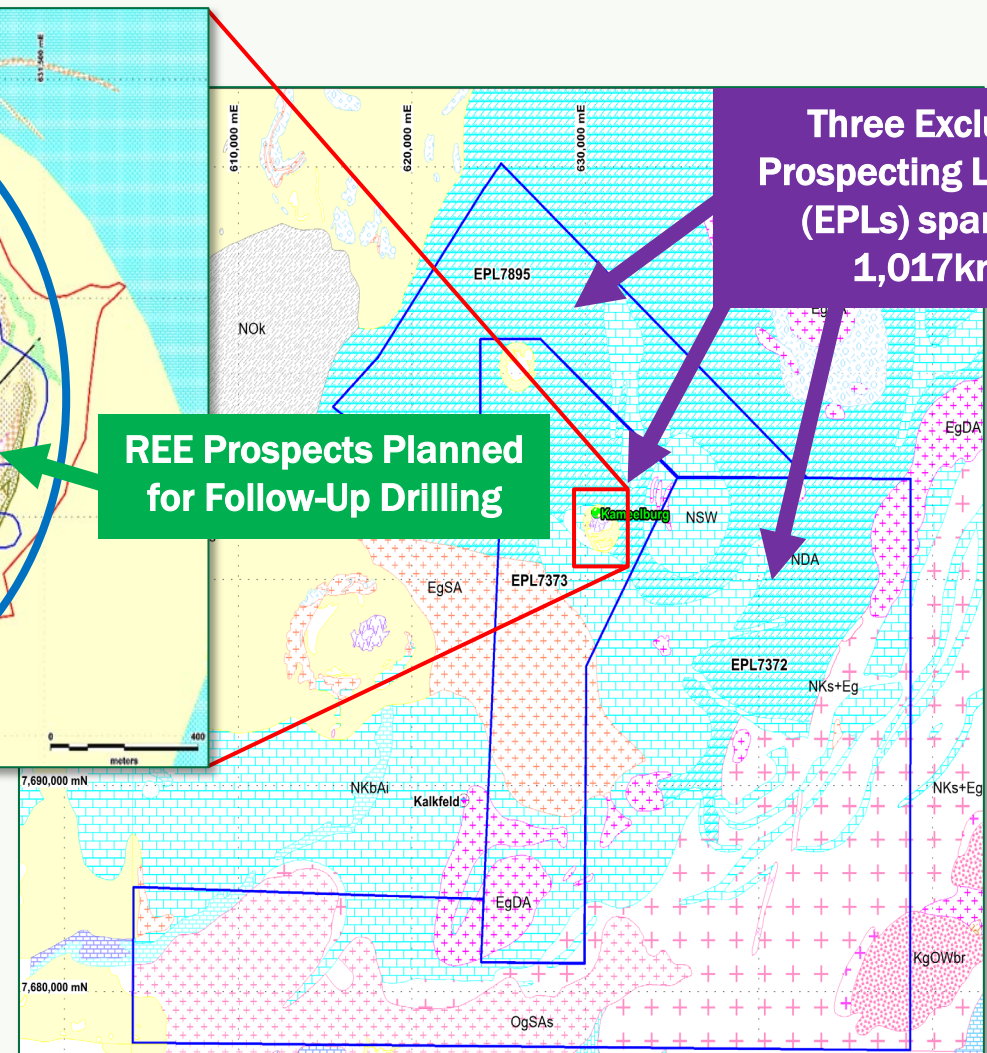


Giant Carbonatite
1.4km in diameter
Rising 270m above ground

Initial Diamond Drilling Targeting
Niobium Rich Dykes
(Target End of Q3)

REE Prospects Planned
for Follow-Up Drilling

Three Exclusive
Prospecting Licenses
(EPLs) spanning
1,017km²





Niobium

- A micro alloy for lighter, stronger and more corrosion resistant steel
- Enhances next generation batteries with super-fast charging, high energy density and improved safety
- Market constrained with only three operating mines



Rare Earth Elements

- Used across critical technology, military and energy applications
- Majority of supply controlled by Chinese companies
- Highly strategic commodities which are the focus of global efforts to encourage new sources of supply

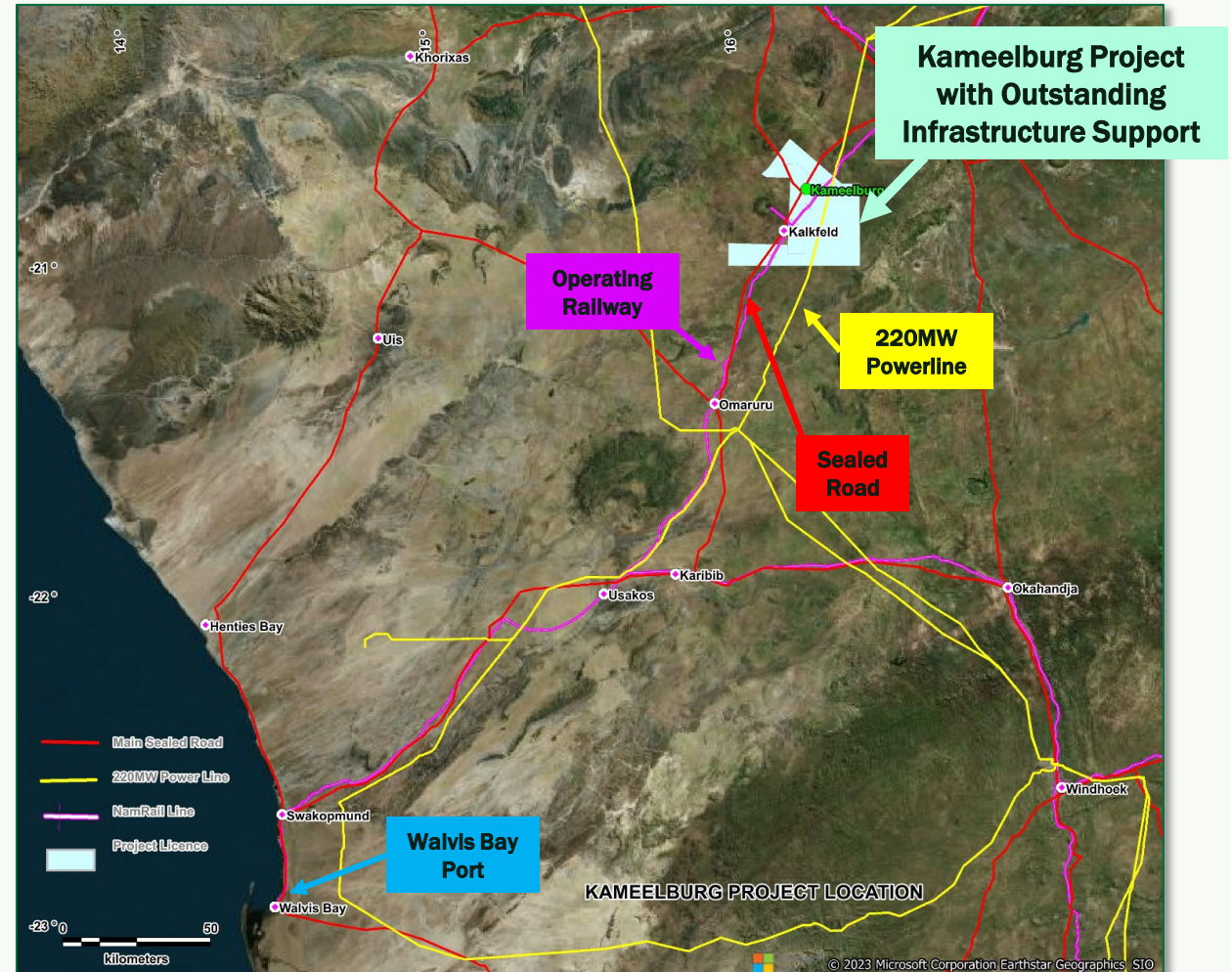
- **Power, rail & road all running through Kameelburg Project location**

✓ **220mW Powerline**

✓ **Operating Railway** to **Walvis Bay Port**

✓ **Main Sealed Road**

- **Excellent Infrastructure Support**



Namibia – An Attractive Mining Jurisdiction

Long established mining history

Significant producer of uranium, diamonds, gold and base metals

Politically stable

Strong rule of law and clear, transparent mining code

Population – 2.53 Million (2021)

A large local workforce opportunity

Mining in Namibia represents 10% of GDP

GDP USD\$12.31 billion (2021)

Large Mining Producers in Namibia

BHP, Bannerman Resources, Paladin Energy



- Incorporate Aldoro **Namibian Subsidiary** to fully undertake local mining exploration & development JV Agreement (85% Aldoro Resources Namibia, 15% Namibian Vendor)
- Intention to **Unlock Full Value** of the giant Kameelburg carbonatite
- **Stage 1:** Core focus on setting up **Foundation**
- **Stage 2: Initial Drilling Programme** with primary focus on targeting Niobium rich regions
- **Stage 3:** Up to **20,000m in Drilling** with goal to define a world class Niobium & REE Resource
- **Stage 4: Niobium & REE JORC Resource Estimate**, full metallurgy report & **Feasibility Study**
- **Stage 5: Development of the Kameelburg Project** through strategic partnership with existing & potential parties

What's Been Accomplished So Far

Large Scale Mapping & Rock Chip Sampling

- To date, **over 120 samples** have been collected

Notable Niobium sample assays¹ include:

- **10.38% Nb₂O₅**
- **6.22% Nb₂O₅**

Notable REE sample assays^{1,2} include:

- **9.89% TREO**
- **6.30% TREO**
- **6.27% TREO**

- Mapping & sampling continues to optimise upcoming drill target locations

Metallurgical Testing

- Latest open cycle **Niobium recovery of 62%** achieved by Bureau Veritas³, Perth
- Result in line with recovery levels by developing mining explorers and producers in the global niobium space
- Provides ample confidence leading up to maiden drilling mainly targeting niobium-rich dykes (**Stage 2**)
- Full metallurgical report for Niobium & REE expected in coming months

¹ <https://announcements.asx.com.au/asxpdf/20240620/pdf/064rwxnx33fw75.pdf>

² <https://announcements.asx.com.au/asxpdf/20240418/pdf/062mnhnysgj4tc.pdf>

³ <https://announcements.asx.com.au/asxpdf/20240715/pdf/065l6x04fh0q36.pdf>

Ongoing Test Work by Highly Experienced Metallurgists

- Multiple diamond cores drilled from selected Kameelburg sites using Hilti portable drill ^{1,2}
- Cores shipped to China and Australia for comprehensive metallurgical testwork

Four Streams of Metallurgical Testing

China

- Professor Zhiguo He, Central South University¹
- Shenghe Resources Holdings Co.

Australia

- Bureau Veritas Minerals, Perth²
- Auralia Metallurgy, Perth

¹ <https://announcements.asx.com.au/asxpdf/20240617/pdf/064myqd43n7bh9.pdf>

² <https://announcements.asx.com.au/asxpdf/20231019/pdf/05w7gkzxbdfe53.pdf>



Nb Core



REE Core

Kameelburg – What's Next

Maiden Diamond Drilling

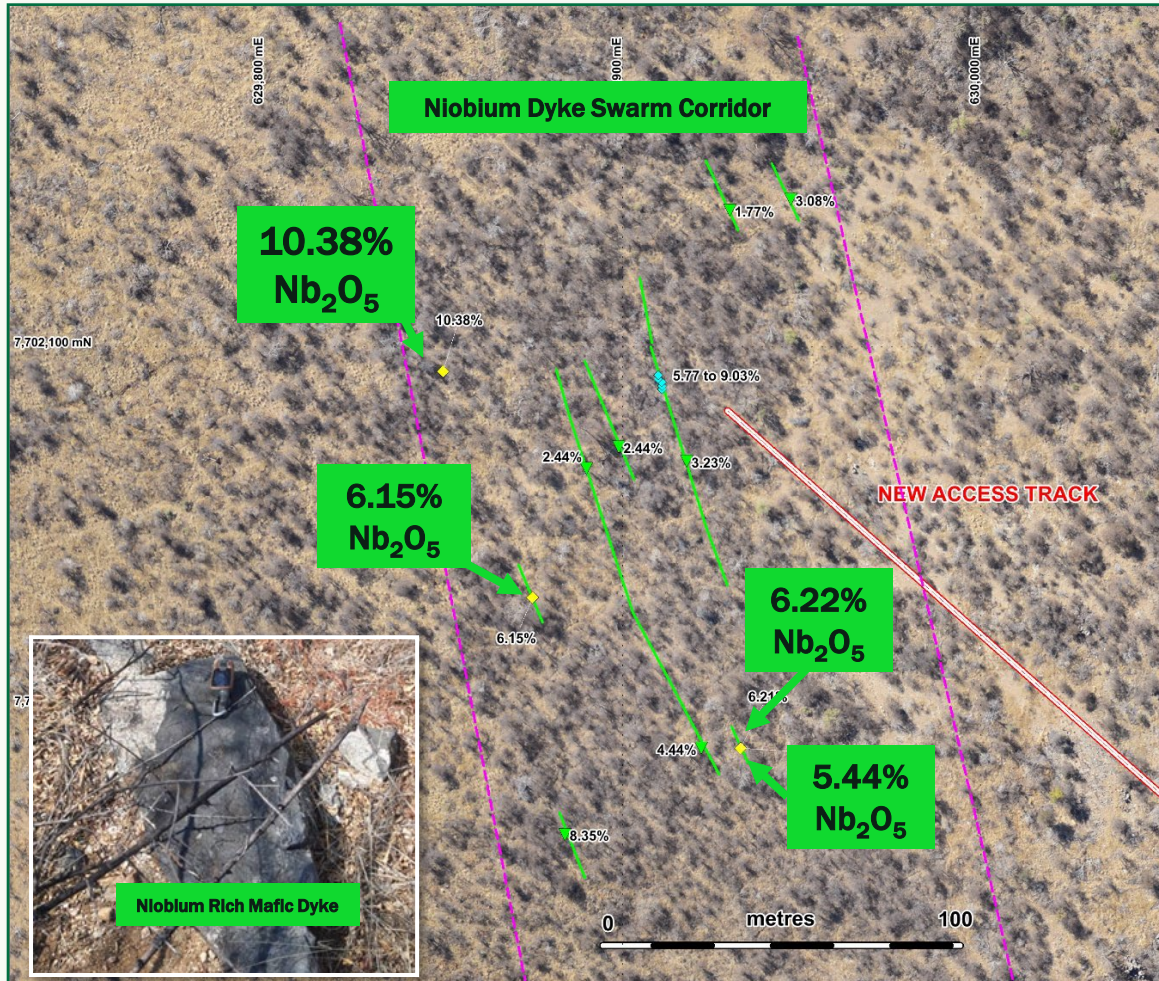
- Initial planned 2000m diamond drilling mainly targeting Kameelburg's Niobium-rich dykes
- Magnetic Survey targeting significant area of interest for Nb around the drill area
- Total of 10 diamond drill holes planned at 200m lengths
- Drill target area located at south-west periphery of Kameelburg Carbonatite
- Simple track access given peripheral location

Preparations Rapidly Advancing

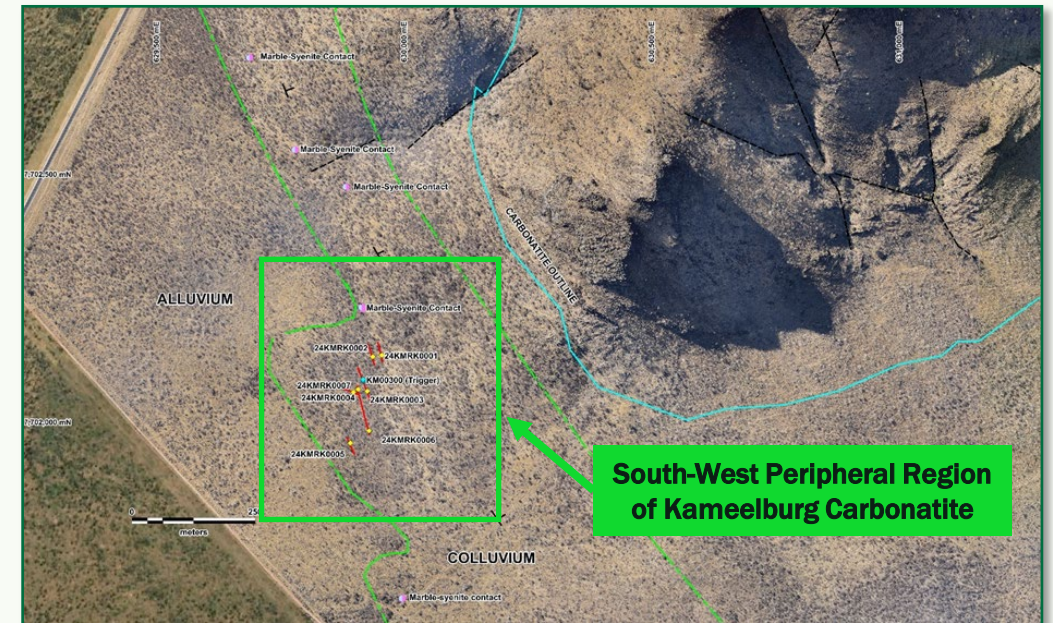
- Access tracks cleared from main road to niobium drill target site
- Underground water supply drilled and ready for diamond drill rig
- Diamond drill rig preparation underway
- Relevant personnel, logistics & crew accommodation preparation on hand

Maiden Diamond Drilling targeted for end of Q3, subject to regulatory approvals

Niobium Target Drill Areas Mapped – Excellent Results to Date



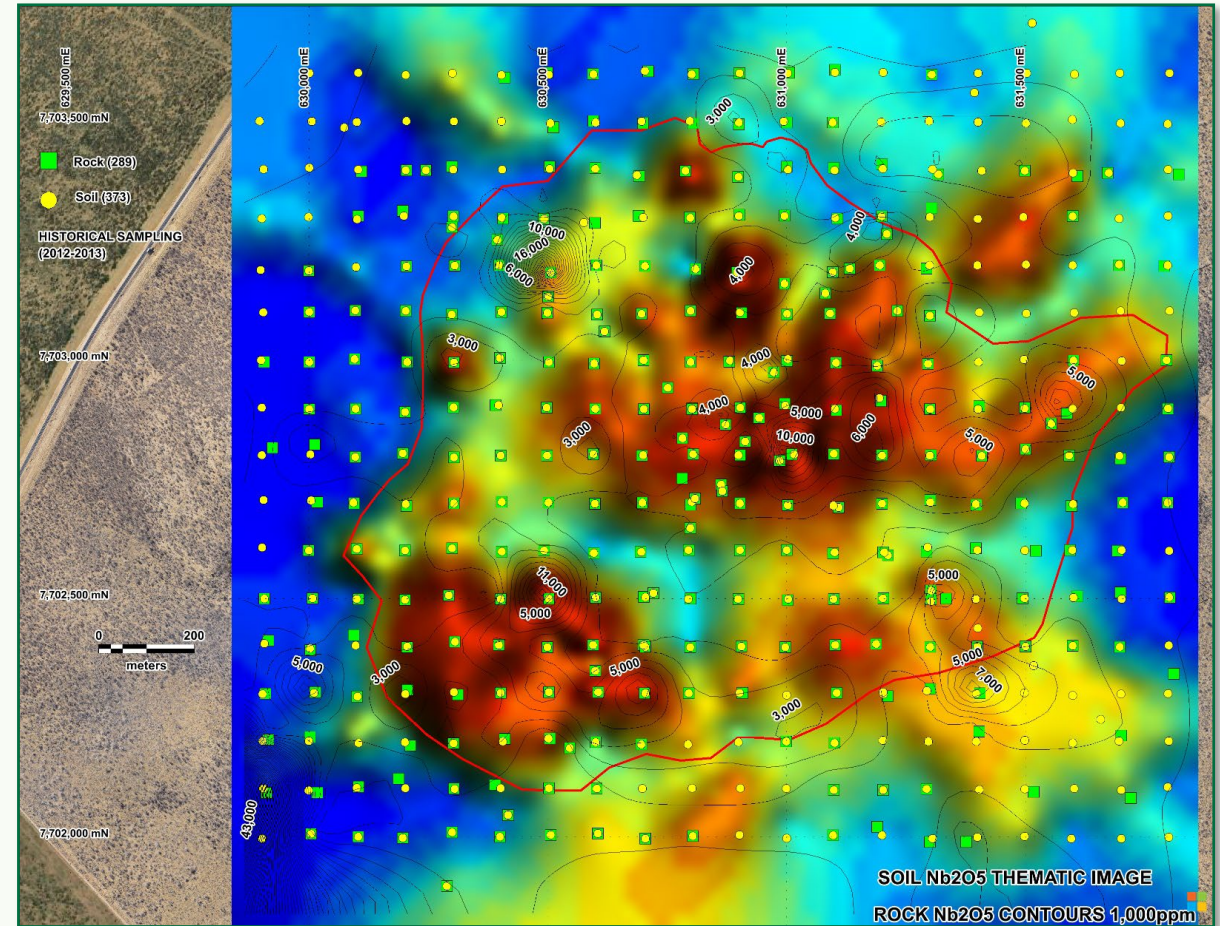
- Mapping results so far¹ at the Niobium-rich dyke areas ranged from **1.78% - 10.38% Nb₂O₅**
- **Niobium Dyke Swarm Corridor** located at south-west peripheral region of carbonatite = **simple track access**
- Provides strong rationale for maiden drilling target to test niobium enrichment at depth



¹ <https://announcements.asx.com.au/asxpdf/20240620/pdf/064rwxnx33fw75.pdf>

Kameelburg – Further Niobium Distribution?

- Kameelburg Project area spans **~4km²**
- Historic sampling data shows **over 25%** of project area contain samples that are **0.3% Nb₂O₅ or higher**
- Speaks potential high volumes of contained niobium at Kameelburg, with current price¹ US\$61/kg Nb₂O₅
- Historic sampling also shows niobium presence in the soils being more widespread than that in rock samples
- **Suggests high probability of further open niobium rich dykes**
- **Re-affirms rationale for continued mapping & sampling**

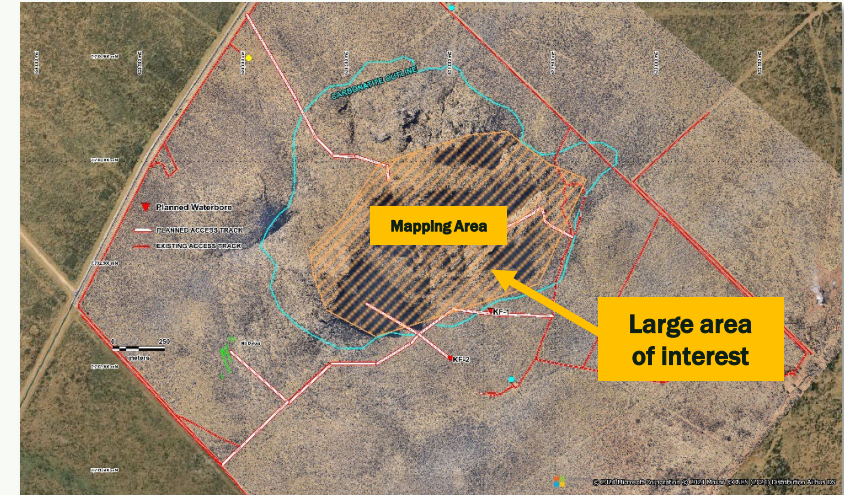


¹ <https://www.metal.com/Niobium-Tantalum/202211090009>

Kameelburg - Forward Strategy

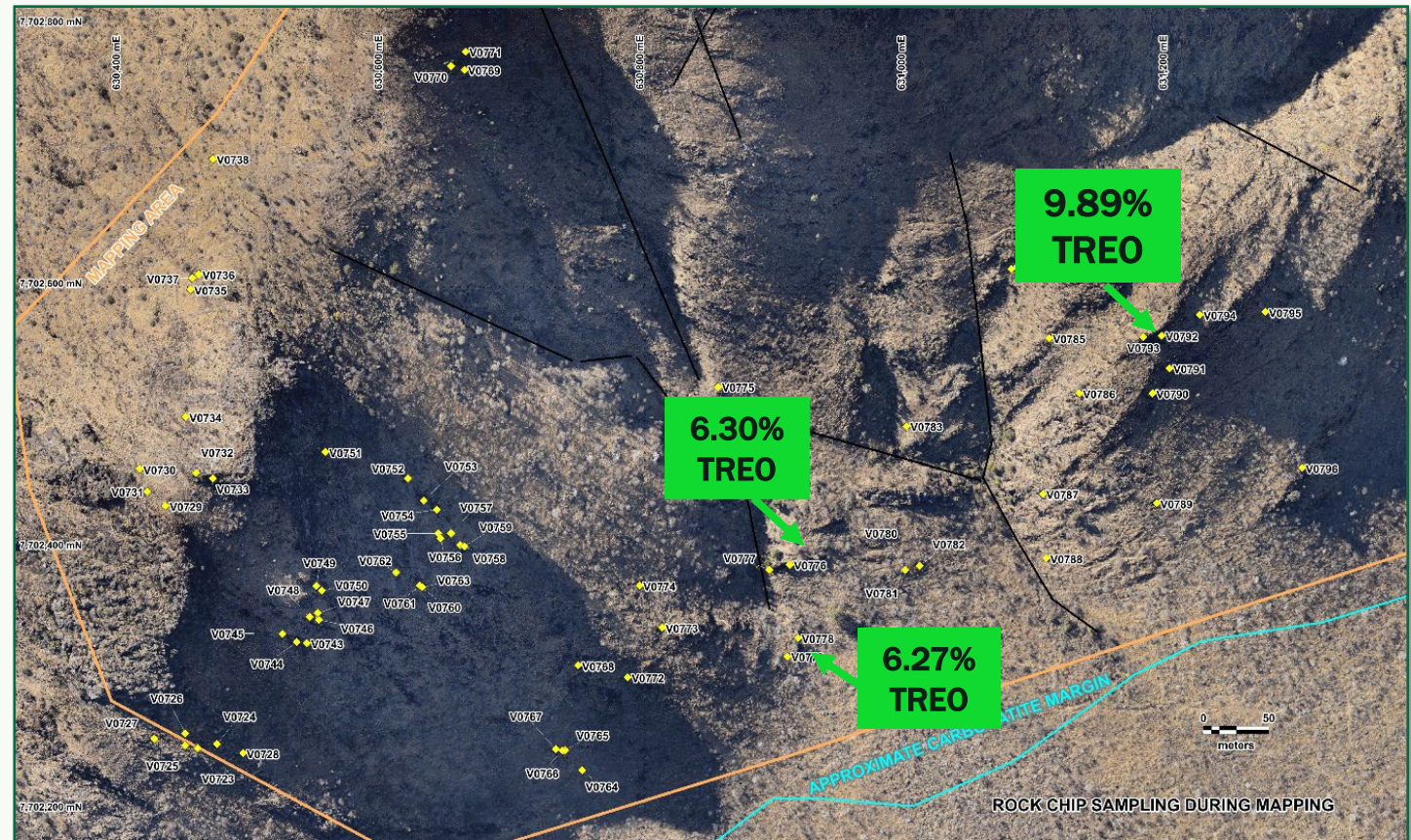
Large Scale 20,000m Diamond Drilling

- Magnetic Survey targeting significant area of interest for Nb around the whole giant carbonatite
- Targeting significant area of interest for REE covering major portion of the giant carbonatite
- Up to 150 diamond drill holes being planned
- Large scale access track clearance currently in progress
- Multiple Nb & REE targets to be confirmed



Rare Earth Mapping – Impressive REE Results To Date

- Large scale **REE mapping** spanning south to east regions of the large carbonatite
- Most recent notable assays¹ include:
 - ✓ **9.89% TREO**
 - ✓ **6.30% TREO**
 - ✓ **6.27% TREO**
- Prior sampling results² ranging from **1.29% to 6.60% TREO**



¹ <https://announcements.asx.com.au/asxpdf/20240620/pdf/064rwxnx33fw75.pdf>

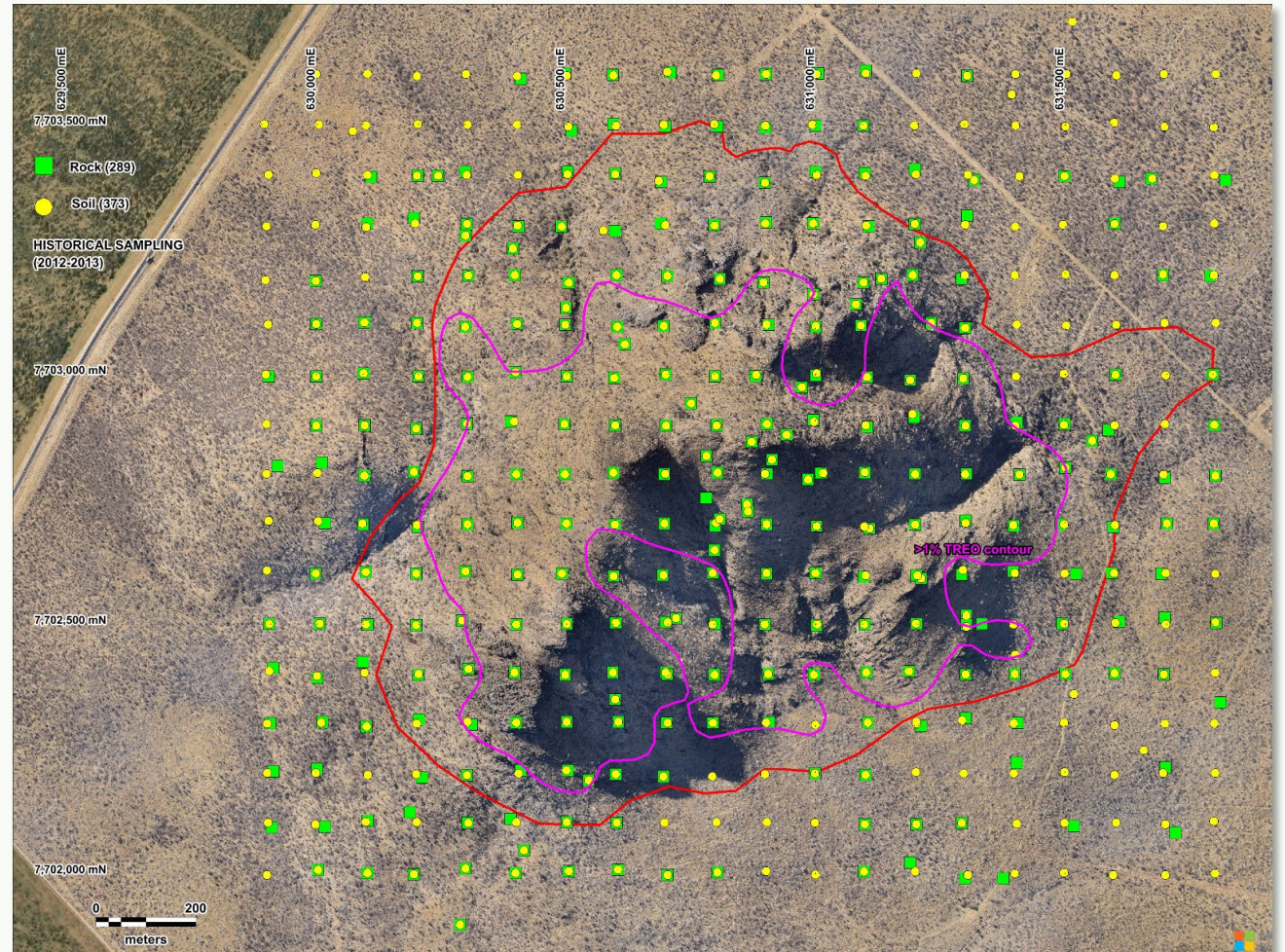
² <https://announcements.asx.com.au/asxpdf/20240418/pdf/062mnhnysgj4tc.pdf>

Kameelburg – Quality Historical REE Data!

- Large historical REE data set on file
- Over 700 historic REE samples
- 100m grid samples, total of 1900m by 1600m
- Rock chip sampling not biased, based on outcrop availability

Kameelburg Historic Sampling – TREO Results

| | Soil | Rock Chip | Area, km ² |
|-----------------------|------|-----------|-----------------------|
| TOTAL GRID | | | 3.04 |
| No. of samples | 410 | 312 | |
| Highest Value % | 2.66 | 5.56 | |
| Average % | 0.78 | 0.76 | |
| CARBONATITE | | | 1.606 |
| No. of samples | 211 | 152 | |
| Highest Value % | 2.66 | 5.56 | |
| Average % | 1.09 | 1 | |
| >1% CONTOUR | | | 0.838 |
| No. of samples | 107 | 79 | |
| Highest Value % | 2.66 | 5.56 | |
| Average % | 1.44 | 1.27 | |



623,500 mE
7,703,500 mN

630,000 mE
631,000 mE
631,500 mE

7,703,000 mN
7,702,500 mN
7,702,000 mN

0 200
meters

**HISTORICAL SAMPLING
(2012-2013)**

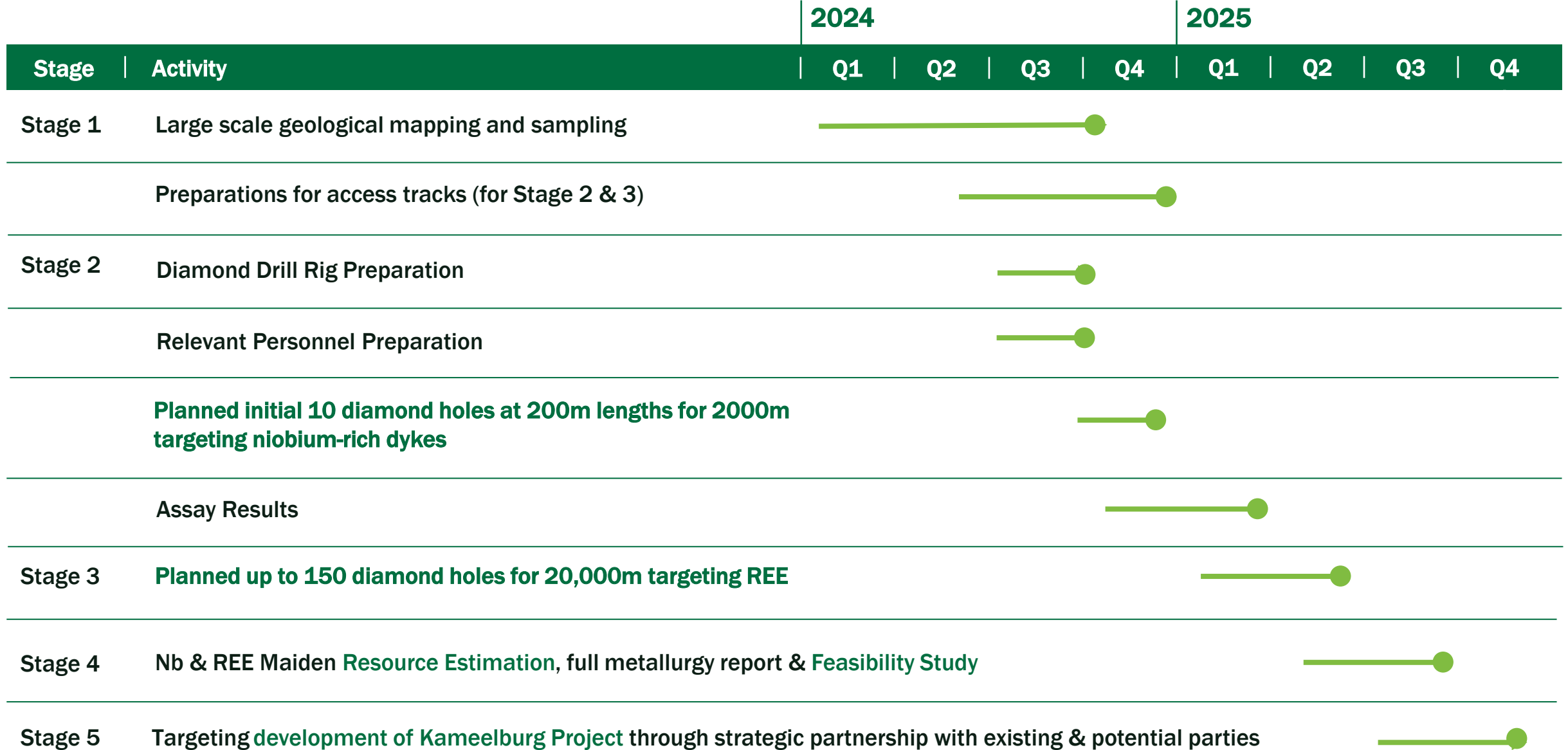
Rock (289)
Soil (373)

25,000
45,000
10,000
25,000
15,000
10,000
20,000
25,000
30,000
25,000

SOIL TREO THEMATIC IMAGE
ROCK TREO CONTOURS 10,000ppm

-
- A landscape photograph showing a field of tall, dry, yellowish grass in the foreground. A chain-link fence runs across the middle ground. In the background, two large, rounded hills or mountains are visible under a bright blue sky with scattered white clouds. Several utility poles with power lines are visible on the left side of the image.

Kameelburg – Stage Development vs Timeline



ALD
RESOURCES



Thank You

For more information please email:
mark@aldororesources.com

ASX:ARN

