

30 July 2024

ASX Announcement

Tenement acquired immediately adjacent to high grade polymetallic (Au-Ag-Zn-Pb-Cu) Achilles discovery, South Cobar, NSW

Highlights

- Agreement executed for acquisition of tenement application ELA6755 - North Achilles
- North Achilles is located within the Cobar district (NSW), well known for hosting outstanding high grade orebodies including the CSA copper (ASX:MAC), and the Peak and Hera polymetallic (Au-Cu-Ag-Zn-Pb) mines (ASX:AMI)
- North Achilles is approximately 2km along strike from Australian Copper and Gold Ltd's (ASX:AGC) recent Achilles discovery, which has returned drill intercepts up to 5m @ 16.9g/t Au, 1,667g/t Ag, 0.4% Cu and 15% Pb + Zn (ASX 04.06.2024)
- The Achilles shear (which hosts the Achilles prospect) has been interpreted from geophysical imagery to continue north under shallow cover into the North Achilles tenement, indicating potential for further occurrences of high-grade polymetallic mineralisation
- This underexplored tenement is located in one of Australia's exploration hotspots and provides commodity and geographic diversity to Regener8's portfolio of critical metal projects

Summary of acquisition

Regener8 Resources NL (ASX: R8R) (**Regener8** or the **Company**) is excited to announce the Company has entered into an agreement to acquire tenement application ELA6755, known as Achilles North. The key terms of the agreement are summarised in the Annexure to this announcement.

The tenement application is located immediately adjacent and abutting tenements held by Australian Gold and Copper (ASX:AGC) where approximately 2.2km south, the Achilles discovery was recently made (**Figures 1 & 3**). This discovery displays outstanding drill results including:

- **5 metres @ 16.9g/t Au, 1,667g/t Ag, 0.4% Cu & 15% Pb + Zn** (A3RC030 - AGC ASX Ann. 04.06.2024)
 - Peak grades of **45g/t Au, 3,970g/t Ag and 38.8% Pb + Zn**
- **24 metres @ 13.0% Pb + Zn, 64g/t Ag, 0.6g/t Au & 0.7% Cu** (A3RC038 – AGC ASX Ann. 17.06.2024)

Regener8 Resources HQ

333c Charles Street
North Perth WA 6006

P +61 (8) 9226 2011
E hello@regener8resources.com.au



AGC’s continuing exploration of Achilles demonstrates that the strike of the mineralisation remains open to the north and south, with lookalike IP and geochemical targets extending north of the discovery towards ELA6755 (AGC ASX Ann 10.07.2024). Drilling of these northern targets some 1.7km from ELA6755 are underway following AGC’s recent \$11M capital raising (AGC ASX Ann 29.05.2024).

ELA6755 is located in the world-class South Cobar region of NSW (**Figure 2**) which hosts outstanding high grade polymetallic discoveries and long life mines, including the CSA Copper Mine acquired in 2024 by Metals Acquisition Corp (ASX:MAC) and the Peak and Hera polymetallic (Au-Cu-Ag-Zn-Pb) mines operated by Aurelia Metals Ltd (ASX:AMI). The region is renowned for small footprint, high grade deposits which have supported local mining for over a century.

Managing Director of Regener8, Stephen Foley, comments:

“Securing this tenement in a highly prospective and renowned location provides Regener8 with optionality and diversity into its portfolio. The Achilles discovery by AGC is extremely exciting with outstanding gold, silver, lead and zinc results and ongoing exploration from AGC and SER indicates that the potential for discoveries in the area has just begun to be realised. AGC have shown impressive leadership from their exploration approach through to community and stakeholder engagement. We hope to emulate their success across these aspects and create value for Regener8 and our stakeholders with our approach.”

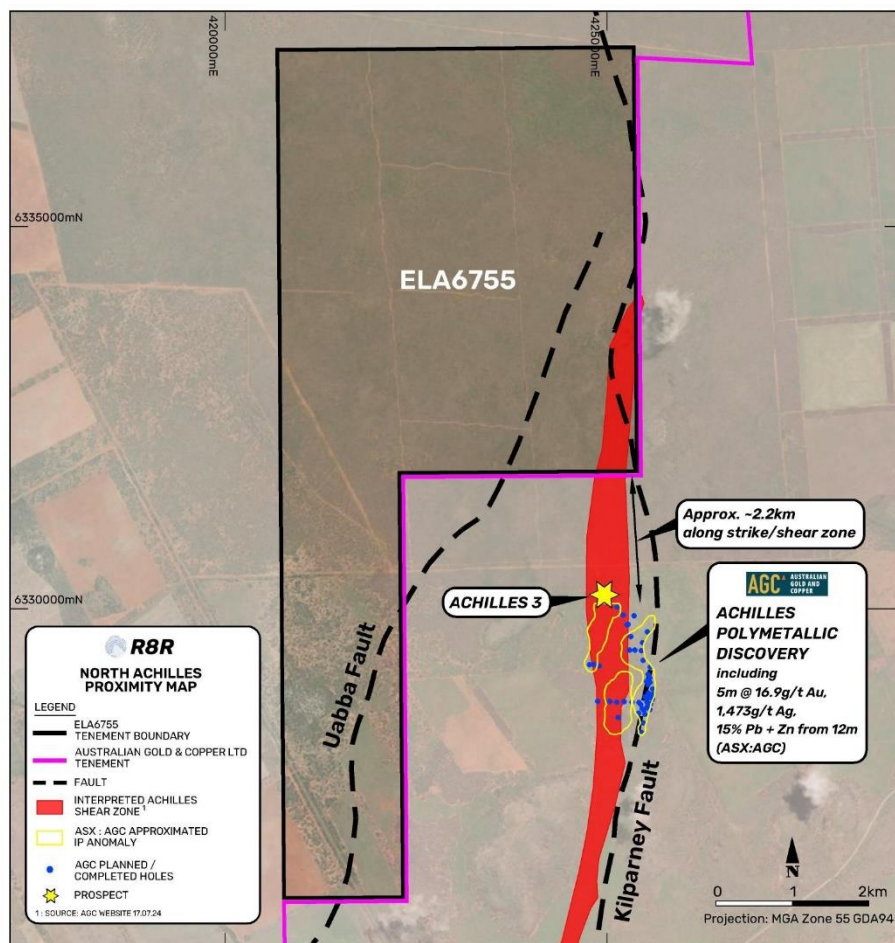


Figure 1: Local Proximity, North Achilles Project

Regener8 Resources HQ

333c Charles Street
North Perth WA 6006

P +61 (8) 9226 2011
E hello@regener8resources.com.au



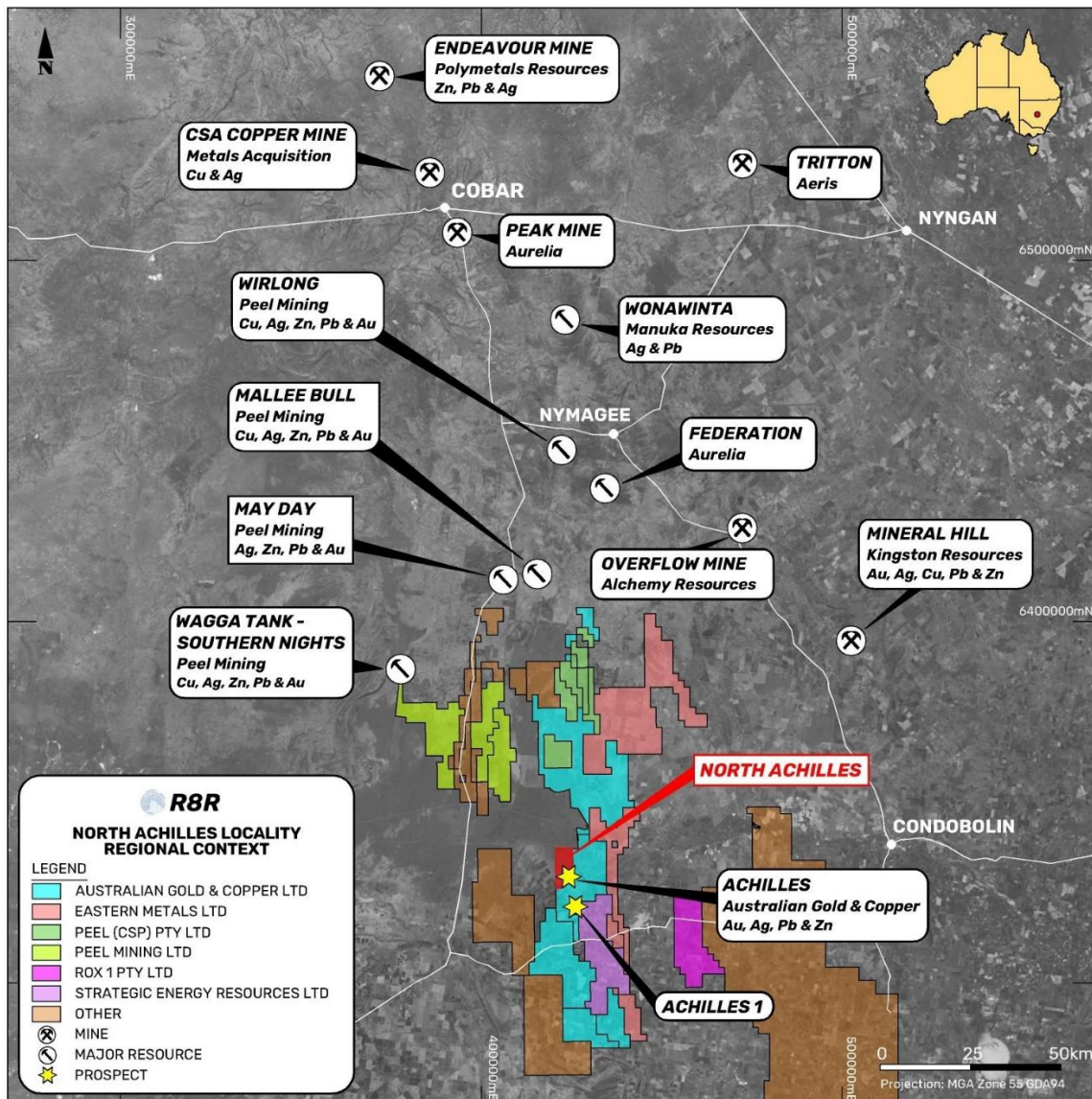


Figure 2: Regional Proximity, North Achilles Project

Achilles geological background

The Achilles prospect is hosted in the Achilles Shear within the Rast Trough of the southern Cobar Basin. The Rast Trough is dominated by felsic volcanism with minor sediments, and is bounded to the west by the Uabba Fault (**Figures 1 and 3**).

The potential for polymetallic, Cobar-style mineralisation within the Achilles Shear was first identified by Santa Fe Mining in the late 1990s. The Achilles Shear (**Figures 1 and 3**) is a 15 km long structure that has been interpreted as a southern, along-strike equivalent of the Rookery Fault system which controls the distribution of the central Cobar district polymetallic deposits at Hera and Peak (AGC Prospectus, 2021).

Regener8 Resources HQ

333c Charles Street
North Perth WA 6006

P +61 (8) 9226 2011
E hello@regener8resources.com.au



Subsequent exploration of the Achilles Shear by Santa Fe Mining, Savage Resources, Thomson Resources, Western Plains Gold and New South Resources has defined 3 main prospect areas – Achilles 1, 2 and 3. Achilles 3 (approximately 1.5 km south of ELA6755) was initially defined by a distinct lead-in soils anomaly closely related to the outcropping Devonian basement (**Figure 3**), and further refined by moving loop EM surveys (AGC Prospectus, 2021).

Since listing on the ASX in 2021, AGC has been exploring the Achilles 3 prospect area with the discovery of significant mineralisation approximately 1 km south of the historic Achilles 3 prospect in April 2024 (AGC ASX Ann. 23.04.2024). Subsequent exploration has defined the sulphide mineralisation as occurring within a loosely N-S striking and east-dipping package of sheared and foliated rhyolites that remains open at depth and to the north and south.

Approximately 8km south of Achilles 3, is the Achilles 1 prospect. This is currently being explored by Strategic Energy Resources Ltd (ASX:SER) for a similar style of mineralisation (**Figure 2**).

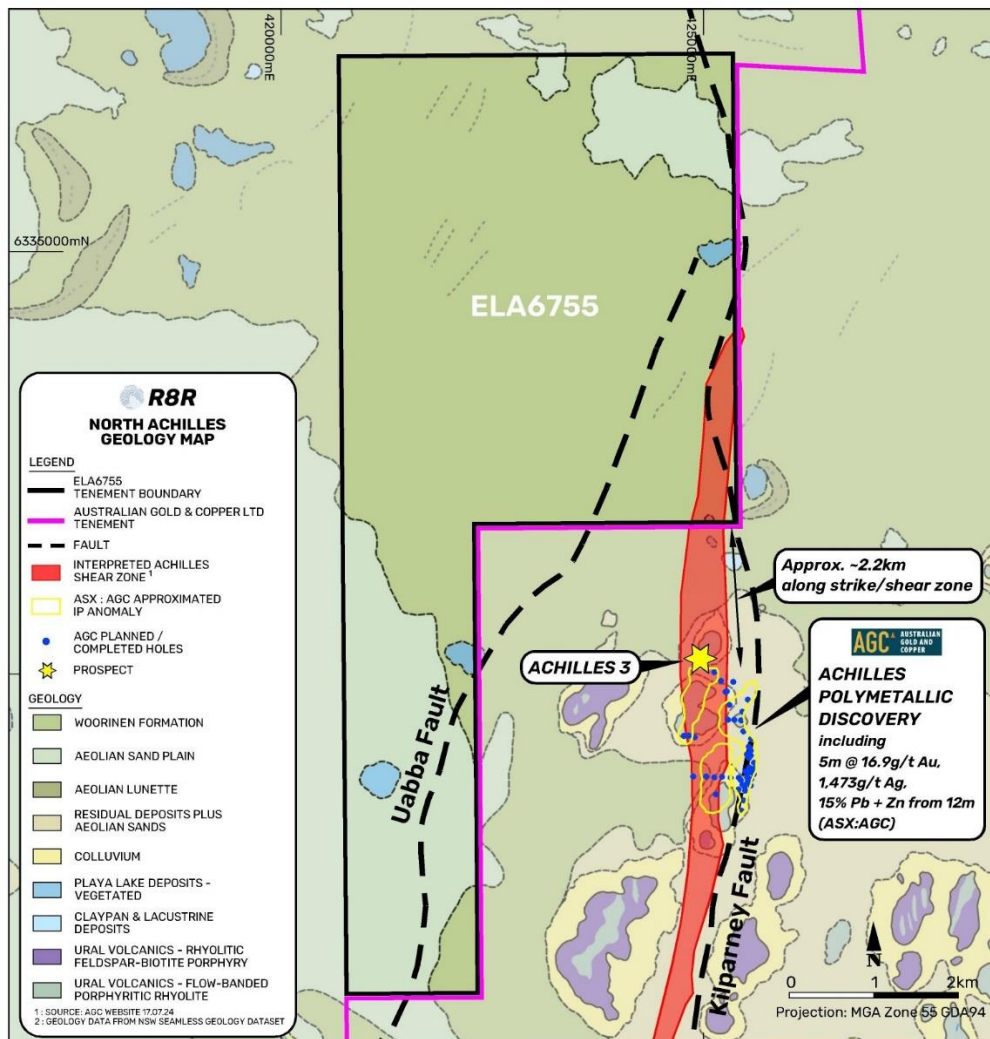


Figure 3: Local Geology, North Achilles Project



North Achilles ELA6755

The North Achilles tenement application area overlies the northernmost extent of the Achilles Shear, near the convergence of Uabba and Kilparney Fault (**Figures 1 and 3**). While the Devonian basement that hosts mineralisation outcrops in the Achilles 3 area, the North Achilles project area is concealed by shallow Cenozoic dune fields and sediments of the Woorinen Formation (**Figure 3**). This cover renders surface geochemical sampling, which has been integral to the discovery of the Achilles prospects and many other deposits in the Cobar region, ineffective. As a result, the tenement area has seen very little historic exploration and remains effectively unexplored.

The location of the tenement and neighbouring exploration success presents an opportunity to undertake targeted and systematic exploration of the North Achilles tenement area. Regener8 intends to leverage the growing geological and exploration understanding of the local mineralisation to explore the northern Achilles Shear for similar occurrences.

Moving Forward

The Company will continue to pursue its maiden exploration campaign at the East Ponton project over the coming months whilst the Achilles North tenement moves through the grant process. Regener8 will commence development of exploration strategy for North Achilles, to deliver high impact exploration outcomes effectively whilst continuing its approach to explore on country in a climate, community and culturally sensitive manner.

This ASX Announcement has been authorised for release by the Board.

For further information, please contact:

Stephen Foley
Managing Director
Tel: +61 8 9226 2011



Acquisition Key Terms

Tenement Number: ELA6755

Vendor: Ross Chandler (an unrelated party to the Company)

Conditions Precedent:

- Vendor assigns tenement application to R8R, within 60 days of agreement execution, and provides relevant documentation and best endeavours to support this.
- If grant of tenement is issued prior to R8R being assigned during application, the Vendor will transfer the tenement to R8R, including obtaining all necessary consents and approvals.

Consideration:

At completion (grant of exploration tenement to R8R):

- \$50,000 + GST cash payment total.
- Reimbursement of valid tenement application fees.
- 1,000,000 fully paid ordinary shares in the Company to be issued subject to shareholder approval.
- 1% gross smelter return royalty.



Background Regener8 Resources Projects

Regener8's diverse and future facing exploration project portfolio consists of three key projects across Australia:

1. **North Achilles Project, South Cobar, NSW:** Polymetallic (Au, Ag, Pb, Zn)

Located immediately beside and along trend of Australian Gold and Copper's (ASX:AGC) Achilles discovery with outstanding results including **5 metres @ 16.9g/t Au, 1,667g/t Ag, 0.4% Cu & 15% Pb + Zn** (A3RC030 - AGC ASX Ann. 04.06.2024)

2. **East Ponton Project, WA:** Critical Minerals (Rare Earths, Ni, Co)

Located approximately 220km east of Kalgoorlie and nominally 40km south south-east of known carbonatite discoveries. These include the exploration restricted Cundeelee carbonatite, described by BHP as the largest, effectively untested carbonatite in the world (port A56942, BHP 1998) and the Ponton Intrusion discovery with some of the highest-grade intersections ever found in Australia including (ASX: GXY announcement 11 January 2011) **16m @ 14.48% TREO** (PN03A), **28m @ 10.50% TREO including 6m @ 20.57% TREO** (PN10A) and **26m @ 6.99% TREO** from surface including 8m @ 13.12% TREO (PN09A)

3. **Kookynie Gold Project, WA:** Gold

Sitting within the Kookynie Gold district north of Kalgoorlie, the project hosts substantial historical workings and exploration with intersections including **2m @ 70.5 g/t Au** (RC38), **2m @ 15.4 g/t Au** (RC315) and **2m @ 11.32 g/t Au** (RC391). Regener8's 2023 program found encouraging results which included **5m @ 3.18 g/t Au** (NGRC017) and **2m @ 7.77g/t Au** (including **1m @ 14.8 g/t Au** in NGRC037).



Figure A:
Regener8 Exploration Portfolio
Project Locations

Regener8 Resources HQ

333c Charles Street
North Perth WA 6006

P +61 (8) 9226 2011
E hello@regener8resources.com.au

