



Commencement of Expert Geophysics Helicopter Electro Magnetic Survey Sally Downs Copper Project – Kimberley WA

TechGen Metals Limited (“TechGen” or the “Company”) is pleased to announce an exploration update at its 100% owned Sally Downs Copper and Nickel Project located 10km south of the Savannah Nickel, Copper and Cobalt Mine on Exploration Licence Application E80/6059 and is 75km northeast of Halls Creek in Western Australia.

The project is within the Halls Creek Orogen and contains rock units of the Sally Downs Supersuite, Tickalara Metamorphics and Dougalls Suite. The Savannah Nickel Mine is located only 10km from the Sally Downs Project in a similar geological setting

ANNOUNCEMENT HIGHLIGHTS

- **First ever airborne geophysics survey at Sally Downs Copper (+/- Nickel -PGE) project aiming to generate bed-rock conductors for drill targeting**
- **Expert Geophysics engaged to cover the Kimberley projects with the latest geophysics technology**
- **650-line kms @ 200m spacing being flown**
- **Excellent access and nearby infrastructure**
- **Scientific first move advantage in renowned mineralised district targeting massive sulphide, intrusive and shear hosted mineral deposits**



Photos 1: Expert Geophysics TargetEM26 (TIME-DOMAIN EM) SYSTEM and AIRBORNE MAGNETOMETER SYSTEM.



TechGen's Managing Director, Ashley Hood, commented: *"We're delighted to commence this state-of-the art, latest technology in airborne geophysics at our Sally Downs Kimberley project, conducted by Expert Geophysics and overseen by the Company's geophysical consultants at Southern Geoscience.*

Upon completion of the survey, the data will be modelled by Expert Geophysics and Southern Geoscience, and relevant targets will be announced once available.

Our other Kimberley copper/gold and nickel, lead and zinc projects, Blue Devil and Copper Springs, will be flown in another four to six weeks as a newer version of the Target EM 26 system current is currently on its way from Canada. This will be the first time the new system will be used in Australia, allowing us to be first movers within high quality projects know to host high-grade mineralisation. Given the technology is new to Australia, the Company is in the process of applying for research and development grants for the pending surveys".

TargetEM26 (TIME-DOMAIN EM) SYSTEM

The TargetEM is a new patent pending airborne time-domain electromagnetics system. TargetEM combines the latest achievements in electronics and sophisticated signal processing techniques to reliably deliver high-resolution geoelectrical data with the highest quality.

AIRBORNE MAGNETOMETER SYSTEM

The airborne magnetometer is a state-of-the-art system developed by EGL. It utilizes a Geometrics G822A or Scintrex CB-3 caesium magnetometer sensor, installed in the towed-bird and the high accuracy Larmor frequency counter developed.

DATA ACQUISITION SYSTEM

The data acquisition system features an EGL PC-104-based data acquisition system. The EGL data acquisition system is an instrument developed by EGL for airborne geophysical data acquisition tasks. It features EGL proprietary technology and software. The EGL data acquisition system simultaneously records data on internal flash disk and displays it on a colour LCD display, at a repetition rate of 0.33 sec, for post-flight computer processing. The five main functions fulfilled by the data acquisition system are: 1) system control and monitoring, 2) data acquisition, 3) real-time data processing, 4) navigation, and 5) data playback and analysis.



Photos 2: Sally Downs Project location within the Halls Creek Orogen.



Despite the project's prospective geology and close proximity to the Savannah Nickel and Copper Mine, only limited previous exploration has been undertaken in the project area, with no previous drilling or electrical geophysics completed. Companies including Pickands Mather, Australian Anglo American Ltd, Geochemex, Stockdale Prospecting, Geopeko, Freeport and BHP have explored the area, conducting only stream sediment sampling of portions of the project area, limited rock chip sampling, airborne magnetics and airborne gravity surveys. This previous work has identified the Melon Patch Prospect (skarn-related copper mineralisation, with rock chip samples to 2.3% Cu), the Wills Creek Prospect (consisting of veins containing malachite, azurite and chalcopyrite assaying up to 1.5% Cu) and the Bullseye Gabbro Prospect (which is a discrete gravity anomaly).

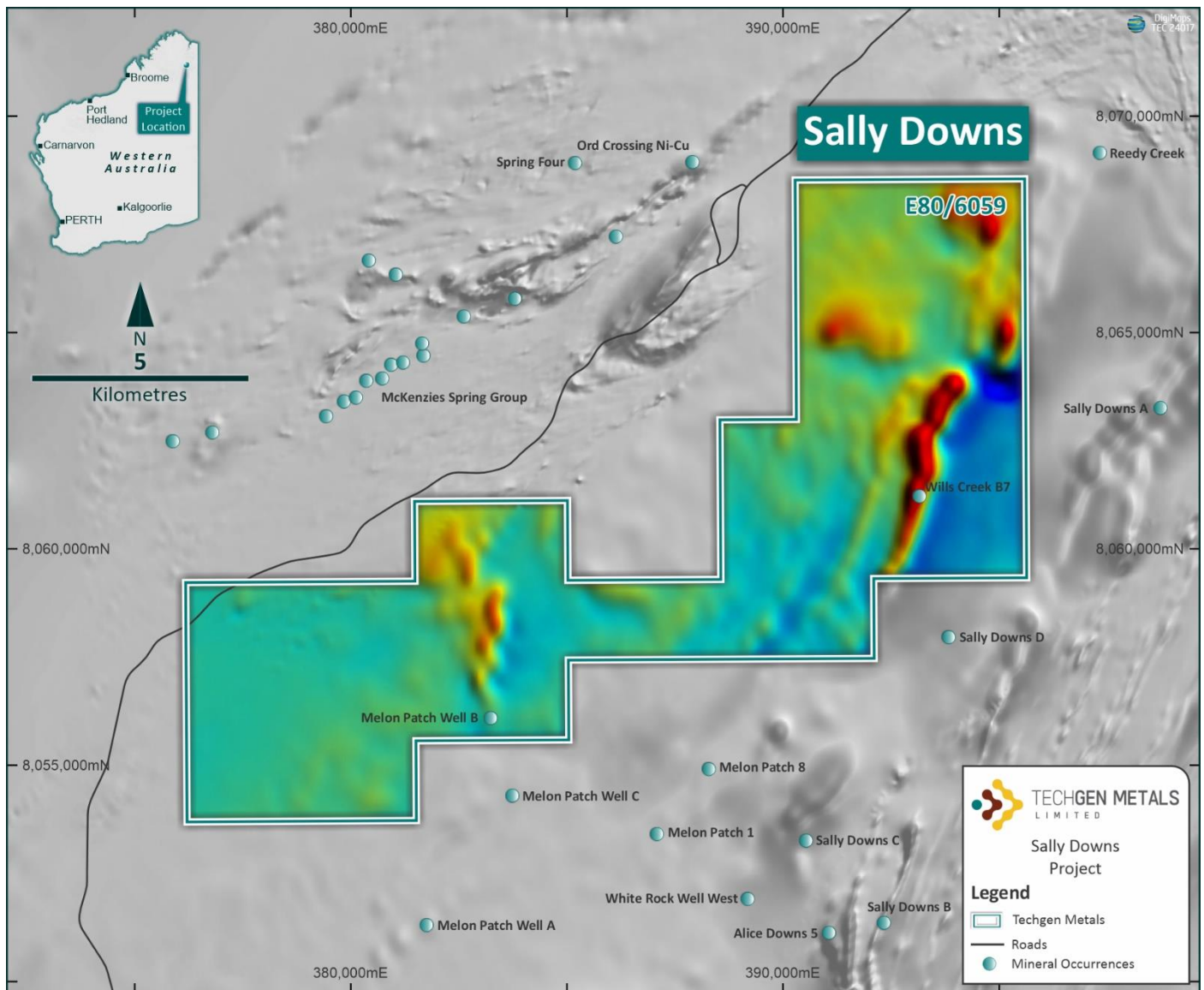


Figure 1: Sally Downs Project over magnetics, located 10km south of the Savannah Nickel (+Copper) Mine.

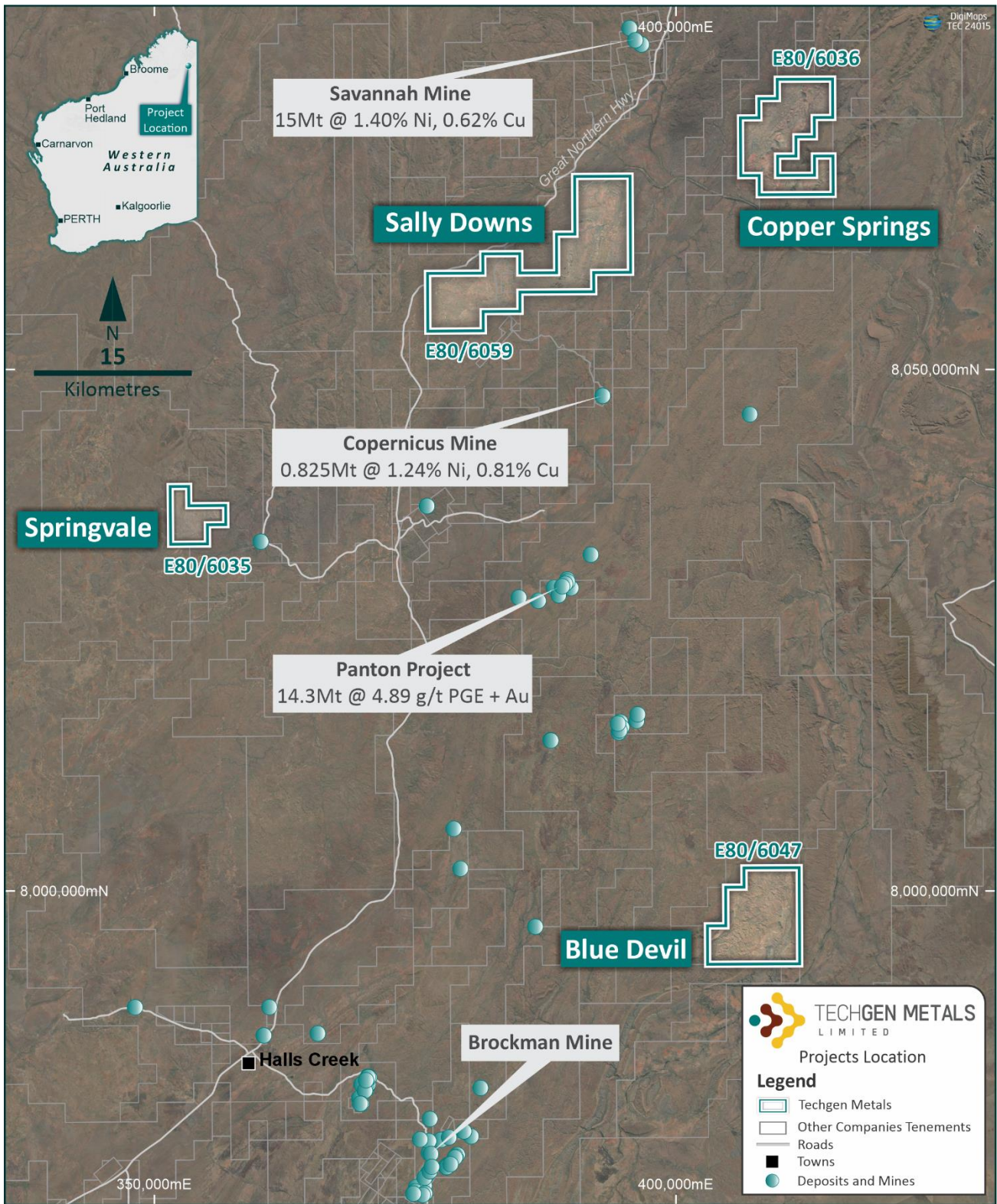


Figure 2. Map showing the Company's recently added copper projects in the East Kimberley Region of Western Australia.

ENDS



About TechGen Metals Limited



TechGen is an Australian registered exploration Company with a primary focus on exploring and developing its gold, copper (+/- nickel/PGE) and uranium projects strategically located in highly prospective geological regions in WA, and one in NSW.

For more information, please visit our website: www.techgenmetals.com.au

Authorisation

For the purpose of Listing Rule 15.5, this announcement has been authorised for release by the Board of Directors of TechGen Metals Limited.

Competent Person Statement

The information in this announcement that relates to Exploration Results is based on and fairly represents information compiled and reviewed by Andrew Jones, a Competent Person who is a member of the Australasian Institute of Mining and Metallurgy (AusIMM). Andrew Jones is employed as a Director of TechGen Metals Limited. Andrew Jones has



sufficient experience that is relevant to the style of mineralisation and type of deposits under consideration and to the activity being undertaken to qualify as a Competent Person as defined in the 2012 edition of the Australasian Code of Reporting of Exploration Results, Mineral Resources and Ore Reserves. Andrew Jones consents to the inclusion in this announcement of the matters based on his work in the form and context in which it appears.

Previously Reported Information

Any information in this announcement that references previous exploration results is extracted from previous ASX Announcements made by the Company.

Forward Looking Statements

Certain information in this document refers to the intentions of TechGen, however these are not intended to be forecasts, forward looking statements, or statements about the future matters for the purposes of the Corporations Act or any other applicable law. Statements regarding plans with respect to TechGen's projects are forward looking statements and can generally be identified using words such as 'project', 'foresee', 'plan', 'expect', 'aim', 'intend', 'anticipate', 'believe', 'estimate', 'may', 'should', 'will' or similar expressions. There can be no assurance that the TechGen's plans for its projects will proceed as expected and there can be no assurance of future events which are subject to risk, uncertainties and other actions that may cause TechGen's actual results, performance, or achievements to differ from those referred to in this document. While the information contained in this document has been prepared in good faith, there can be given no assurance or guarantee that the occurrence of these events referred to in the document will occur as contemplated. Accordingly, to the maximum extent permitted by law, TechGen and any of its affiliates and their directors, officers, employees, agents and advisors disclaim any liability whether direct or indirect, express or limited, contractual, tortious, statutory or otherwise, in respect of, the accuracy, reliability or completeness of the information in this document, or likelihood of fulfilment of any forward-looking statement or any event or results expressed or implied in any forward-looking statement; and do not make any representation or warranty, express or implied, as to the accuracy, reliability or completeness of the information in this document, or likelihood of fulfilment of any forward-looking statement or any event or results expressed or implied in any forward-looking statement; and disclaim all responsibility and liability for these forward-looking statements (including, without limitation, liability for negligence).

For further information, please contact:

Mr Ashley Hood, Managing Director

P: +61 427 268 999

E: admin@techgenmetals.com.au

www.techgenmetals.com.au