

ASX Announcement
1 August 2024



COLLERINA PROSPECTIVE COPPER ZONE EXTENDED

Geochemistry Update

Highlights

- **More than 600 auger sample assays from the Eastern Group Tenements received, confirming the Collerina Copper Trend as a major prospective zone with elemental signatures indicative of Tritton-style copper-gold deposits.**
- **Geochemical infill results confirm the tenor and scale of pathfinder element anomalies identified at several targets:**
 - **Numerous +20ppb gold (Au) assays have been returned, with peak values of 187ppb Au, 39ppb Au and 44ppb Au at Max's Folly, Alderbaran and Gwinear respectively, with the sample grid infilled to 50m x 50m at Max's Folly and Alderbaran, and to 100m x 50m at Gwinear.**
 - **Several Au anomalies have been defined at Tarawera and lowaba, with numerous +20ppb Au assays, with peak values of 37ppb Au and 59ppb Au respectively, with the sample grid infilled to 50m x 50m in multiple areas.**
- **Next steps include continued infill and extension auger sampling, aircore drilling and detailed assessment for distinctive Tritton-style copper-gold deposit geochemical signatures to provide context for vectoring and area prioritisation.**

Helix Resources Ltd (**ASX:HLX**, Helix or the Company) is pleased to announce further positive assays from geochemical sampling conducted in search of new copper-gold deposits in the Eastern Group Tenements located approximately 40km southeast of Nyngan in central, NSW. The Eastern Group Tenements cover approximately 1,570km² directly south along strike of Aeris Resources' (ASX:AIS) Tritton processing facility and several operating copper-gold mines (**Figure 1**).

Helix's Managing Director, Kylie Prendergast commented:

"The auger infill programs continue to confirm there are significant geochemical anomalies along the prospective corridor we refer to as the Collerina Copper Trend, which extends south from the Aeris Resources copper tenements through Helix's Eastern Group Tenements for over 100km of strike length. The results demonstrate this is a major prospective zone and the signatures we are observing in the data are consistent with signatures for Tritton-style copper gold deposits.

Helix is working proactively around crop and weather constraints to progress programs in all accessible areas, bringing targets to a drill ready stage as efficiently as possible. There are also several large areas along the prospective trend which are proposed for aircore drilling as they are essentially unexplored, given airborne VTEM geophysics may not have tested through the alluvial clays.

Helix is focused on advancing several priority targets in its pipeline which we believe have potential to deliver a new copper-gold discovery in the highly endowed, Cobar region close to established operations and processing facilities."



BOARD & MANAGEMENT

Chair
Mike Rosenstreich
Managing Director
Kylie Prendergast
Non-Executive Director
Emmanuel Correia

CAPITAL STRUCTURE

Share
3,264 M
Market Cap.
\$9.79 M
Share Price
\$0.003

CONTACT US

helix@helixresources.com.au
T: +61 8 93212644
Level 4 225 St Georges Terrace
Perth, WA 6000
helixresources.com.au
ASX: HLX & HLXO

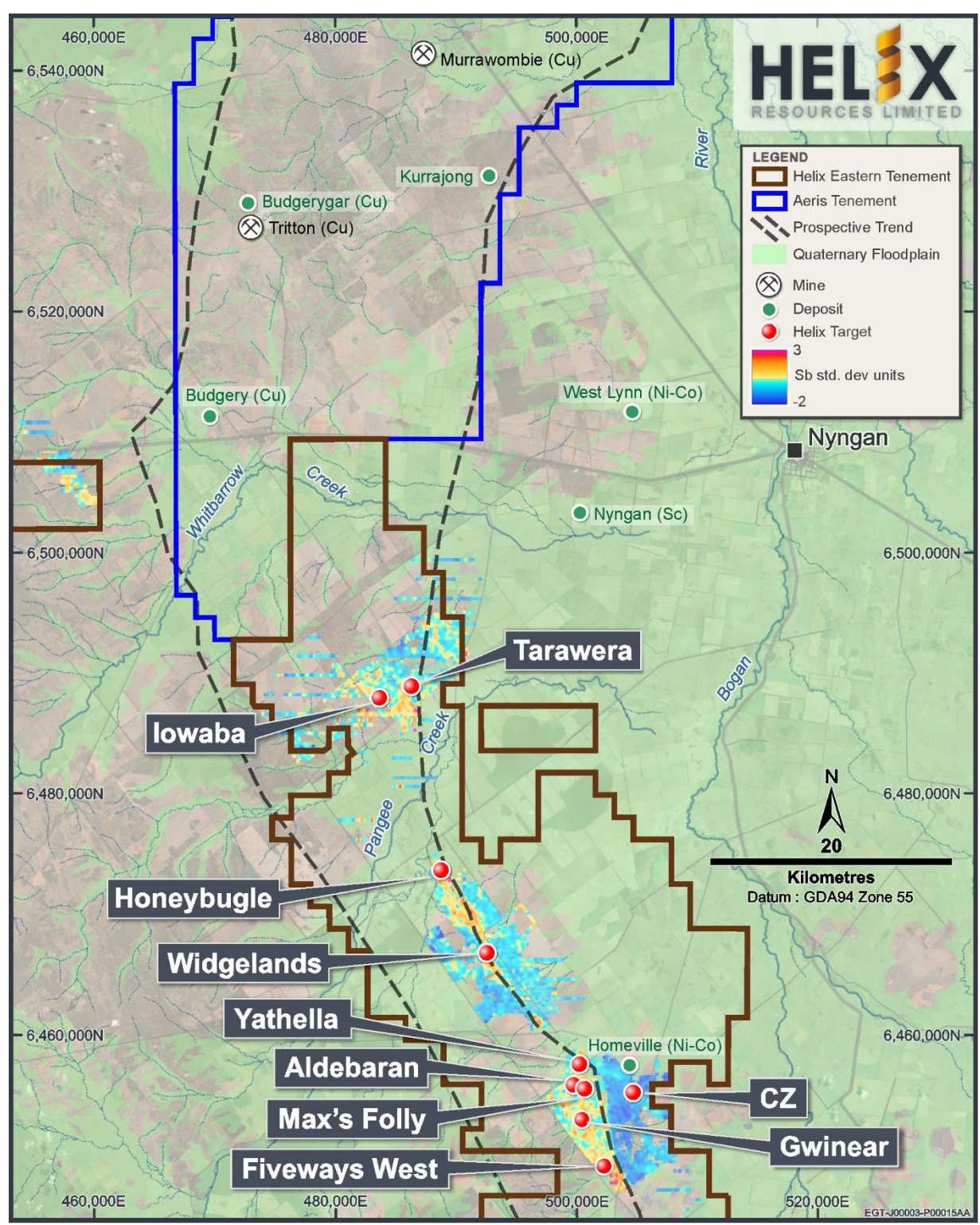


Figure 1 – Eastern Group tenure, targets and Sb element map. Updated with new auger results from several targets: Max's Folly, Alderbaran, Gwinear, lowaba and Tarawera.



Technical Report – Auger Results

Further assay results have been received for 615 auger samples from the Eastern Group Tenements where Helix is exploring along the Collierina trend via a systematic reconnaissance auger geochemical sampling program. The latest results are highly encouraging and show a clearly identifiable geochemical signature consisting of gold (Au), arsenic (As) and antimony (Sb) which are considered indicative of Tritton-style copper-gold deposits occurring along the Collierina trend.

The exploration program, subject to cropping and weather events, is ongoing, and this report provides an update on recent auger sampling assay results. The objective is to progress the new areas as rapidly as possible to a drilling stage.

Broad multi-kilometre scale Sb and As anomalies were reported previously¹ at the Alderbaran and Max's Folly targets west of the CZ Copper Project, and at the lowaba and Tarawera targets in the northern section of Collierina Trend² (**Figure 1**). Sb and As are two of several important pathfinder elements for copper-gold deposits. Helix is evaluating the multielement suite for distinctive Tritton-style copper-gold signatures to provide context for vectoring and area prioritisation.

Max's Folly, Alderbaran and Gwinear

Assay results for infill auger sampling in the Max's Folly, Alderbaran and Gwinear areas have been received and several Au anomalies have been defined. The sampling grid was infilled in non-cropped areas to 50m x 50m at Max's Folly and Alderbaran, and to 100m x 50m at Gwinear. Numerous +20ppb Au assays have been returned, with peak values of 187ppb Au, 39ppb Au and 44ppb Au at Max's Folly, Alderbaran and Gwinear respectively (**Figure 2**). Approximately half of the footprint of the Max's Folly and Gwinear anomalies are under crop and the infill sampling grid will be completed after crops are harvested in November.

lowaba and Tarawera

The auger sampling was undertaken on a 200m x 200m sampling grid at lowaba and Tarawera, and it generally avoided drainage channels where auger sampling would be ineffective due to the depth of alluvial cover. Several discrete Au anomalies have been defined at Tarawera and lowaba, with numerous +20ppb Au assays, with peak values of 37ppb Au and 59ppb Au respectively (**Figure 3**). The western Au anomaly at lowaba is open to the southwest, with further assays pending. These anomalies will need further infill auger sampling to define drill targets. There is no previous drilling in the lowaba and Tarawera areas. Most of the footprint of the Tarawera anomalies and approximately 30% of the lowaba anomalies are under crop and the infill sampling grid will be completed after crops are harvested in November.

Next Steps

- Results from 45 auger samples at lowaba pending at the laboratory are expected in early-August.
- Infill and extension auger sampling to define drill targets in anomalous zones at lowaba and Tarawera will be undertaken in non-cropped areas after pending results are received.
- Infill auger sampling is currently in progress at the Bijoux prospect, Rochford Trend in the Western Group tenements, with results expected in late-August to early-September.
- Additional infill auger sampling at Max's Folly and Gwinear will be undertaken after crops have been harvested.
- Aircore drilling is being planned to follow up auger anomalies where they extend into deeper cover areas, where auger drilling will be ineffective.
- All anomalies and targets emerging from this work will be assessed, and the top-ranked targets will be followed up with drilling.

¹ Refer ASX report 19 March 2024

² Refer ASX report 25 June 2024

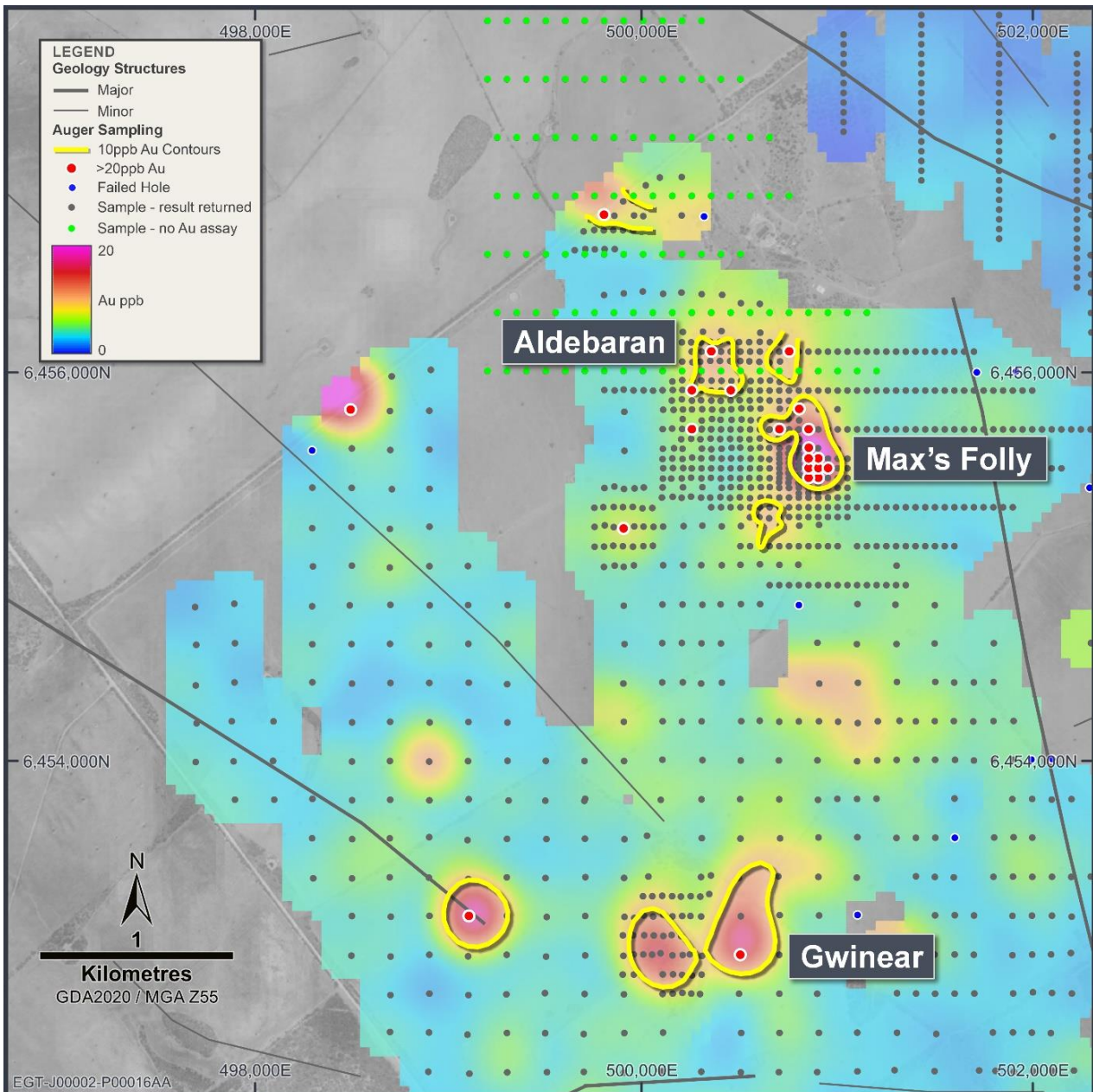


Figure 2 – Max's Folly, Alderbaran and Gwinear – auger Au results.

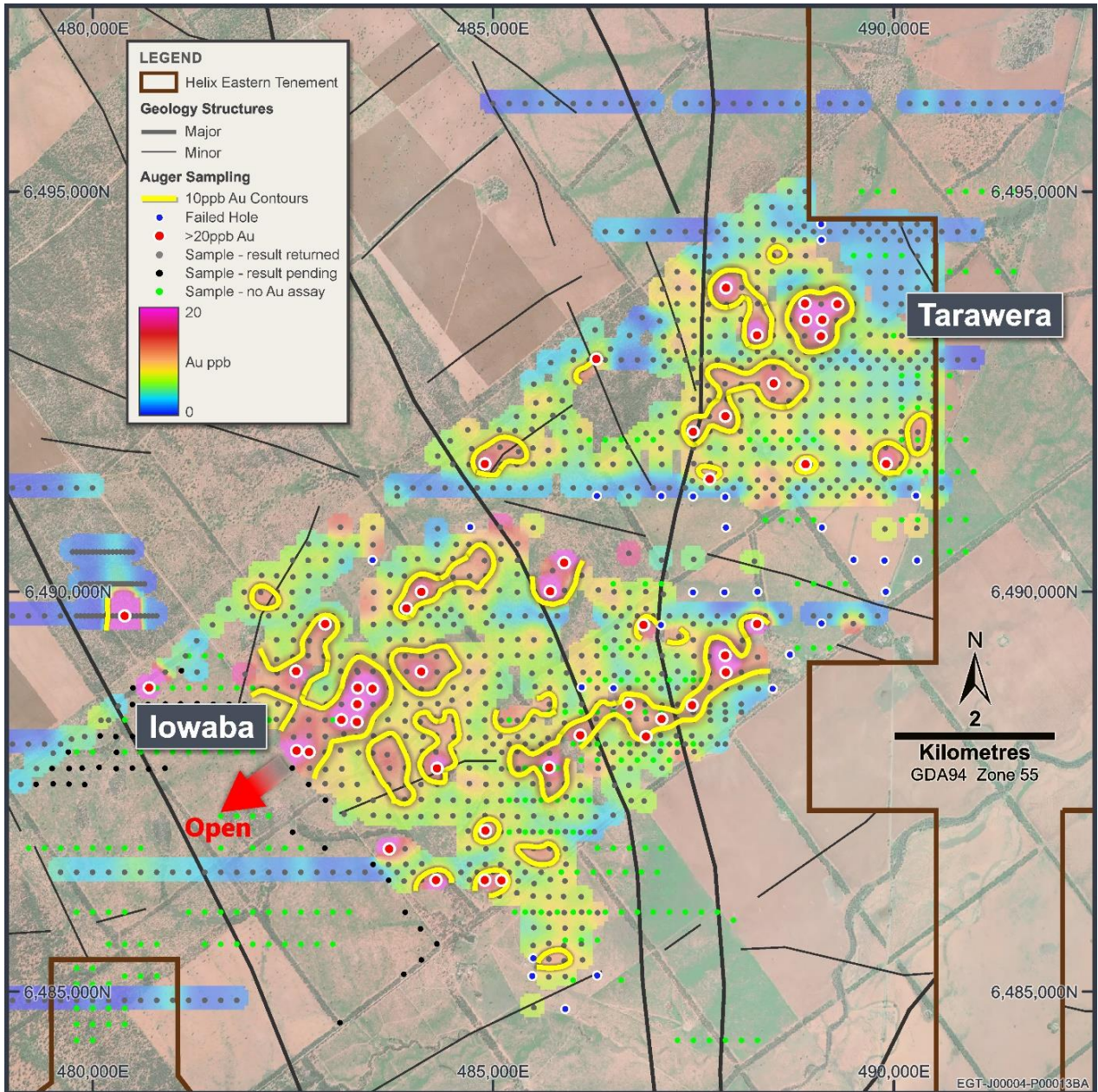


Figure 3 – lowaba and Tarawera – auger Au results



COMPETENT PERSON STATEMENT

The information in this report that relates to exploration results and geological data for the Cobar projects is based on and fairly represents information and supporting documentation prepared by Mr. Gordon Barnes and Dr. Kylie Prendergast who are both employees and shareholders of the Company. Mr. Barnes and Dr. Prendergast are Members of the Australian Institute of Geoscientists. They both have sufficient experience that is relevant to the styles of mineralisation and types of deposits under consideration and to the activities being undertaken to each qualify as Competent Person(s) as defined in the 2012 Edition of the “Australasian Code for Reporting of Exploration Results, Mineral Resources and Ore Reserves”. Mr. Barnes and Dr. Prendergast have consented to the inclusion of this information in the form and context in which it appears in this report.

This ASX release was authorised by the Board of Directors of Helix Resources Ltd.



ABN: 27 009 138 738
ASX: HLX



Contact Details:

Helix Resources Limited
Level 4, 225 St Georges Terrace,
Perth, WA, 6000

PO Box 7237
Cloisters Square PO
Perth, WA 6850

Email: helix@helixresources.com.au
Web: www.helixresources.com.au
Tel: +61 (0)8 9321 2644



Board of Directors:

Mike Rosenstreich – Non-executive Chair
Kylie Prendergast – Managing Director
Emmanuel Correia – Non-executive Director

Company Secretary – Ben Donovan
Chief Financial Officer – Michelle Kennedy



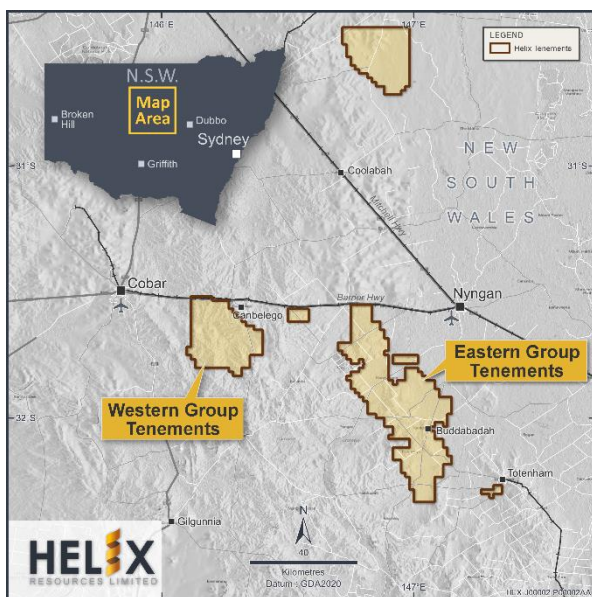
Investor Contact:

Kylie Prendergast

Media Contact:

David Tasker
Chapter One Advisers
Email: dtasker@chapteroneadvisors.com.au
Tel: 0433 112 936

About Helix Resources



Helix Resources is an ASX-listed resources company which is exploring in the prolific copper producing region of Cobar, NSW. The Company possesses a sizable ground position across three tenement groups which are largely untested despite being located within ~50km of significant copper producing operations. The strategy is to generate new copper and gold targets on its large, underexplored ground position and test them through drilling to make new discoveries.

The Western Tenement Group consists of 30km of contiguous strike and the Company is advancing a pipeline of wholly owned copper opportunities, as well as the Canbelego JV Project (70% owned and operated by Helix and 30% owned by Aeris Resources) where a Mineral Resource of 32.8kt of contained copper has been estimated (refer Appendix A). The Eastern Tenement Group encompasses more than 150km of prospective strike and is prospective for Tritton-style copper-gold deposits such as the 100% owned high-grade CZ copper project.

View this announcement on our Investor Hub: <https://investorhub.helixresources.com.au/link/mepdke>



Appendix A: Canbelego Main Lode Mineral Resource Estimate

A Mineral Resource estimate for the Canbelego Main Lode was completed by MEC Mining. This was the first update of the Canbelego resource since the 2010 resource estimate.

The 2023 updated Mineral Resource Estimate for the Canbelego Main Lode is presented in **Table 1** below.

Table 1: 2023 Canbelego Main Lode Mineral Resource Estimate (MRE)

MRE Category	Tonnes	Grade (Cu%)	Cu-Metal (t)
<i>Total opencut MRE, ≥240mRL; 0.3 Cu% cut-off grade & underground MRE, <240mRL; 0.8 Cu% cut-off grade</i>			
Indicated	340,600	1.65	5,620
Inferred	1,493,700	1.75	26,140
Total: Opencut & Underground	1,830,000	1.74	31,842
Comprising:			
MRE Category	Tonnes	Grade (Cu%)	Cu-Metal (t)
<i>Potential opencut MRE, ≥240mRL; 0.3 Cu% cut-off grade</i>			
Indicated	99,700	1.28	1,276
Inferred	282,300	1.21	3,416
Total: potential opencut MRE	377,000	1.23	4,637
<i>Potential underground MRE, <240mRL; 0.8 Cu% cut-off grade</i>			
Indicated	240,900	1.81	4,360
Inferred	1,211,400	1.88	22,774
Total: potential underground MRE	1,453,000	1.87	27,171
* Numbers may not sum due to rounding			
* Numbers are rounded to reflect that they are estimates			
* A top-cut grade of Cu 12% was applied to the MRE			
* Stated MRE complies with Reasonable prospects of eventual economic extraction			

The Mineral Resource Estimate announced on 14 June 2023.

The Company confirms that it is not aware of any new information or data that materially affects the information included in the relevant market announcement and, in the case of mineral resource estimate, that all material assumptions and technical parameters underpinning the estimates in the relevant market announcement continue to apply and have not materially changed.



ATTACHMENT 1: JORC Code Table 1

August 2024 – Eastern Group Tenements geochemistry results

Section 1 Sampling Techniques and Data

Criteria	JORC Code explanation	Commentary
<p>Sampling techniques</p>	<ul style="list-style-type: none"> Nature and quality of sampling (e.g. cut channels, random chips, or specific specialised industry standard measurement tools appropriate to the minerals under investigation, such as down hole gamma sounds, or handheld XRF instruments, etc.). These examples should not be taken as limiting the broad meaning of sampling. Include reference to measures taken to ensure sample representivity and the appropriate calibration of any measurement tools or systems used. Aspects of the determination of mineralisation that are Material to the Public Report. In cases where 'industry standard' work has been done this would be relatively simple (e.g. 'reverse circulation drilling was used to obtain 1 m samples from which 3 kg was pulverised to produce a 30 g charge for fire assay'). In other cases more explanation may be required, such as where there is coarse gold that has inherent sampling problems. Unusual commodities or mineralisation types (e.g. submarine nodules) may warrant disclosure of detailed information. 	<p>Auger Sampling</p> <ul style="list-style-type: none"> Auger sample spacing ranges from 200m x 200m to 50m x 50m. Pre 2021 auger samples were collected by Helix staff. Contractors, Anomaly Exploration & Mining Services and AMWD conducted the post 2021 auger drilling. Auger holes are 110mm diameter and are drilled vertically through the transported overburden. The base of the overburden is typically marked by a quartz-rich lag layer. The average hole depth for pre 2021 samples is 0.4m for hand auger holes and 1.5m for mechanical auger holes. The average hole depth for post 2021 samples is 1.9m. Soil, gravel and saprolite is recovered from the auger flites and deposited onto a rubber mat surrounding the hole collar. Material above the quartz lag layer is removed to avoid mixing with the target horizon. Pre 2021 auger samples were passed through 0.42mm sieve and 200g to 250g of material was placed into a numbered waterproof paper bag. Post 2021 auger samples were passed through a 3.1mm sieve and 0.5kg to 1kg sample is placed into a numbered calico bag. Coarse fragments of bedrock from auger drilling were placed into an RC chip tray for future reference. <p>Sample Security</p> <ul style="list-style-type: none"> All samples were supervised by Helix staff or appropriately inducted contractors.
<p>Drilling techniques</p>	<ul style="list-style-type: none"> Drill type (e.g. core, reverse circulation, open-hole hammer, rotary air blast, auger, Bangka, sonic, etc.) and details (e.g. core diameter, triple or standard tube, depth of diamond tails, face-sampling bit or other type, whether core is oriented and if so, by what method, etc.). 	<ul style="list-style-type: none"> The auger holes are 110mm diameter and are drilled vertically. Pre 2021 auger drilling was by either hand auger (2010 to 2012) or mechanical auger (2012 to 2020). All post 2021 drilling is by mechanical auger. The mechanical auger drill is mounted on a 4WD Landcruiser utility vehicle.



Criteria	JORC Code explanation	Commentary
Drill sample recovery	<ul style="list-style-type: none"> Method of recording and assessing core and chip sample recoveries and results assessed. Measures taken to maximise sample recovery and ensure representative nature of the samples. Whether a relationship exists between sample recovery and grade and whether sample bias may have occurred due to preferential loss/gain of fine/coarse material. 	<ul style="list-style-type: none"> Sample is recovered from the auger flites and deposited onto a rubber mat surrounding the hole collar. Organic material and transported overburden are removed and not sampled. Recoveries are not recorded. Post 2021 holes that fail to penetrate the transported overburden are not sampled.
Logging	<ul style="list-style-type: none"> Whether core and chip samples have been geologically and geotechnically logged to a level of detail to support appropriate Mineral Resource estimation, mining studies and metallurgical studies. Whether logging is qualitative or quantitative in nature. Core (or costean, channel, etc.) photography. The total length and percentage of the relevant intersections logged. 	<ul style="list-style-type: none"> Auger sample characteristics (quartz lag presence, colour, depth sampled and final depth) are recorded in a digital log. Coarse fragments of bedrock from auger samples are stored in RC chip trays for future reference.
Sub- sampling techniques and sample preparation	<ul style="list-style-type: none"> If core, whether cut or sawn and whether quarter, half or all core taken. If non-core, whether riffled, tube sampled, rotary split, etc. and whether sampled wet or dry. For all sample types, the nature, quality and appropriateness of the sample preparation technique. Quality control procedures adopted for all sub-sampling stages to maximise representivity of samples. Measures taken to ensure that the sampling is representative of the in-situ material collected including for instance results for field, duplicate/second-half sampling. Whether sample sizes are appropriate to the grain size of the material being sampled. 	<p>Auger Drilling</p> <ul style="list-style-type: none"> Certified Reference Material (CRM) standards and blanks are inserted into the sample stream at approximately 1:50. Organic material and transported overburden is removed and is not sampled. Auger holes that fail to penetrate the transported overburden are not sampled. For pre 2021 samples, a 200g to 250g sample was considered appropriate, however the minus 0.42mm fraction will concentrate finer-grained material (e.g. aeolian sand/dust), particularly for the shallow hand auger samples. Therefore this method was modified to that outlined below. For post 2021 samples, a 0.5kg to 1kg sample is considered appropriate and representative for the style of mineralisation being targeted.



Criteria	JORC Code explanation	Commentary
Quality of assay data and laboratory tests	<ul style="list-style-type: none"> <i>The nature, quality and appropriateness of the assaying and laboratory procedures used and whether the technique is considered partial or total.</i> <i>For geophysical tools, spectrometers, handheld XRF instruments, etc., the parameters used in determining the analysis including instrument make and model, reading times, calibrations factors applied and their derivation, etc.</i> <i>Nature of quality control procedures adopted (e.g. standards, blanks, duplicates, external laboratory checks) and whether acceptable levels of accuracy (i.e. lack of bias) and precision have been established.</i> 	<p>The laboratory techniques described below are considered appropriate for the style of mineralisation targeted.</p> <p>Auger Drilling</p> <ul style="list-style-type: none"> Bureau Veritas conducted the sample analysis for pre 2021 samples: <ul style="list-style-type: none"> Au was analysed by aqua regia digest of a 50g charge with AAS finish 4 acid digest followed by ICP-MS or ICP-AES finish for multielement suite of 9 to 20 elements. SGS Australia Pty Ltd conducted the samples analysis for the post 2021 samples: <ul style="list-style-type: none"> Samples are dried, weighed and pulverised to a nominal 85% passing 75um. Au was analysed by low-level fire assay of a 30g charge, 4 acid digest (GE_DIG40Q20) followed by ICP-MS (GE_IMS40Q20) and ICP-AES (GE_ICP40Q20) finish for a 59 element suite. The QA/QC data includes standards, duplicates and laboratory checks. QA/QC tests are conducted by the laboratory on each batch of samples with CRM standards.
Verification of sampling and assaying	<ul style="list-style-type: none"> <i>The verification of significant intersections by either independent or alternative company personnel.</i> <i>The use of twinned holes.</i> <i>Documentation of primary data, data entry procedures, data verification, data storage (physical and electronic) protocols.</i> <i>Discuss any adjustment to assay data.</i> 	<ul style="list-style-type: none"> Assay results will be validated by standard database procedures and will be verified by Helix management and are not adjusted. Geological data is logged into laptop using Company logging templates that include validation procedures to ensure data integrity. Logged data includes detailed geology, sample quality and sample number. QA/QC inserts (standards, duplicates, blanks) are added to the sample stream. The auger assay data is statistically assessed, and if appropriate, the data are log-normal transformed and Z-Score levelling by sample type and analytical method is applied. The levelled data are then gridded to define anomalous trends. All logged data, the assay data received from the laboratory, and survey data is loaded into a secure database and verified.
Location of data points	<ul style="list-style-type: none"> <i>Accuracy and quality of surveys used to locate drill holes (collar and down-hole surveys), trenches, mine workings and other locations used in Mineral Resource estimation.</i> <i>Specification of the grid system used.</i> <i>Quality and adequacy of topographic control.</i> 	<ul style="list-style-type: none"> The auger positions were determined using a GPS (± 5m). Grid system is MGA94 Zone 55. Surface RL data is collected using GPS and rectified by high-resolution publicly available digital elevation data (ELVIS 5m data).



Criteria	JORC Code explanation	Commentary
Data spacing and distribution	<ul style="list-style-type: none"> • <i>Data spacing for reporting of Exploration Results.</i> • <i>Whether the data spacing and distribution is sufficient to establish the degree of geological and grade continuity appropriate for the Mineral Resource and Ore Reserve estimation procedure(s) and classifications applied.</i> • <i>Whether sample compositing has been applied.</i> 	<ul style="list-style-type: none"> • Auger ample spacing ranges from 400m x 200m to 50m x 50m, which is sufficient to determine anomalous zones for further investigation.
Orientation of data in relation to geological structure	<ul style="list-style-type: none"> • <i>Whether the orientation of sampling achieves unbiased sampling of possible structures and the extent to which this is known, considering the deposit type.</i> • <i>If the relationship between the drilling orientation and the orientation of key mineralised structures is considered to have introduced a sampling bias, this should be assessed and reported if material.</i> 	<ul style="list-style-type: none"> • The surface sampling and analytical techniques are considered appropriate for the early exploration stage of the project. • The structural trend of regional faults is determined by edge-detection algorithms applied to automatic gain control filters of reduced to pole airborne magnetic data with wavelengths of 100m to 800m.
Sample security	<ul style="list-style-type: none"> • <i>The measures taken to ensure sample security.</i> 	<ul style="list-style-type: none"> • The chain of custody is managed by Helix staff and its contractors.
Audits or reviews	<ul style="list-style-type: none"> • <i>The results of any audits or reviews of sampling techniques and data.</i> 	<ul style="list-style-type: none"> • No additional audits or reviews have been conducted to date.



Section 2 Reporting of Exploration Results

(Criteria listed in the preceding section also apply to this section.)

Criteria	JORC Code explanation	Commentary
Mineral tenement and land tenure status	<ul style="list-style-type: none"> Type, reference name/number, location and ownership including agreements or material issues with third parties such as joint ventures, partnerships, overriding royalties, native title interests, historical sites, wilderness or national park and environmental settings. The security of the tenure held at the time of reporting along with any known impediments to obtaining a licence to operate in the area. 	<ul style="list-style-type: none"> The Company has 20 Exploration Licenses (EL's) in the Cobar-Nyngan region of NSW held by its 100% subsidiary company, Oxley Exploration Pty Ltd. <ul style="list-style-type: none"> 19 are held 100% by Oxley Exploration Pty Ltd, a wholly owned subsidiary of Helix Resources: EL6140, EL6501, EL6739, EL7438, EL7439, EL7482, EL8433, EL8608, EL8633, EL8710, EL8768, EL8845, EL8948, EL8703, EL9345, EL9385, EL9386, EL9387, EL9581. EL6105 is a joint venture with Aeris Resources Ltd (30% participating interest) and Oxley Resources Pty Ltd (70% participating interest and Manager). Native Title Claim NC2012/001 has been lodged by NTSCORP Ltd on behalf of the Ngemba, Ngiyampaa, Wangaaypuwan and Wayilwan traditional owners in the Cobar-Nyngan region which covers the Oxley Exploration Pty Ltd tenement portfolio. All tenements are in good standing and there are no known impediments to operating in this area.
Exploration done by other parties	<ul style="list-style-type: none"> Acknowledgment and appraisal of exploration by other parties. 	<ul style="list-style-type: none"> All tenements have been the subject of previous exploration by numerous companies. Previous exploration data has been compiled, reviewed and assessed for all tenements held by the Company.
Geology	<ul style="list-style-type: none"> Deposit type, geological setting and style of mineralisation. 	<ul style="list-style-type: none"> The tenements are prospective for structurally controlled base metal and gold deposits.
Drill hole Information	<ul style="list-style-type: none"> A summary of all information material to the understanding of the exploration results including a tabulation of the following information for all Material drill holes: <ul style="list-style-type: none"> easting and northing of the drill hole collar elevation or RL (Reduced Level – elevation above sea level in metres) of the drill hole collar 	<ul style="list-style-type: none"> This report is focused on shallow auger drilling.



Criteria	JORC Code explanation	Commentary
	<ul style="list-style-type: none"> ○ <i>dip and azimuth of the hole</i> ○ <i>down hole length and interception depth</i> ○ <i>hole length.</i> ● <i>If the exclusion of this information is justified on the basis that the information is not Material and this exclusion does not detract from the understanding of the report, the Competent Person should clearly explain why this is the case.</i> 	
Data aggregation methods	<ul style="list-style-type: none"> ● <i>In reporting Exploration Results, weighting averaging techniques, maximum and/or minimum grade truncations (e.g. cutting of high grades) and cut-off grades are usually Material and should be stated.</i> ● <i>Where aggregate intercepts incorporate short lengths of high-grade results and longer lengths of low-grade results, the procedure used for such aggregation should be stated and some typical examples of such aggregations should be shown in detail.</i> 	<ul style="list-style-type: none"> ● No assay cut of high-grade material has been applied. ● No metal equivalent values have been calculated.
Relationship between mineralisation widths and intercept lengths	<ul style="list-style-type: none"> ● <i>These relationships are particularly important in the reporting of Exploration Results.</i> ● <i>If the geometry of the mineralisation with respect to the drill hole angle is known, its nature should be reported.</i> <i>If it is not known and only the down hole lengths are reported, there should be a clear statement to this effect (e.g. 'down hole length, true width not known').</i> 	<ul style="list-style-type: none"> ● No RC or diamond drilling is included in this report.
Diagrams	<ul style="list-style-type: none"> ● <i>Appropriate maps and sections (with scales) and tabulations of intercepts should be included for any significant discovery being reported. These should include, but not be limited to a plan view of drill hole collar locations and appropriate sectional views.</i> 	<ul style="list-style-type: none"> ● Refer to Figures in this report.
Balanced reporting	<ul style="list-style-type: none"> ● <i>Where comprehensive reporting of all Exploration Results is not practicable, representative reporting of both low and high grades and/or widths should be practiced to avoid misleading reporting of Exploration Results.</i> 	<ul style="list-style-type: none"> ● The reporting pertaining to auger sampling is balanced, and all material information has been disclosed. ● The results for main geochemical elements of interest have been disclosed on the maps, noting that results are pending for some areas. ● All current relevant exploration data was used in formulating plans and discussion to provide a balanced report of the results and the possible implications for ongoing exploration activities and outcomes.
Other substantive exploration	<ul style="list-style-type: none"> ● <i>Other exploration data, if meaningful and material, should be reported including (but not limited to): geological observations; geophysical survey results; geochemical survey results; bulk samples – size and method of treatment; metallurgical test</i> 	<ul style="list-style-type: none"> ● All relevant exploration results (auger sampling results and interpretation of alluvial cover) are disclosed within the report.



Criteria	JORC Code explanation	Commentary
data	<i>results; bulk density, groundwater, geotechnical and rock characteristics; potential deleterious or contaminating substances.</i>	
Further work	<ul style="list-style-type: none">• <i>The nature and scale of planned further work (e.g. tests for lateral extensions or depth extensions or large-scale step-out drilling).</i>• <i>Diagrams clearly highlighting the areas of possible extensions, including the main geological interpretations and future drilling areas, provided this information is not commercially sensitive.</i>	<ul style="list-style-type: none">• Further auger sampling is in progress in the broader area.• Confirmed geochemical anomalies will be followed-up with surface geophysics and/or initial RC drilling.