



# CORPORATE PRESENTATION

---

**AUGUST 2024**

ASX | GRE

# DISCLAIMER AND COMPETENT PERSON STATEMENT

## FORWARD LOOKING STATEMENTS

Statements in this announcement which are not statements of historical facts are forward-looking statements. These statements instead represent management's current expectations, estimates and projections regarding future events. Although management believes the expectations reflected in such forward-looking statements are reasonable, forward-looking statements are based on the opinions, assumptions and estimates of management at the date the statements are made and are subject to a variety of risks and uncertainties and other factors that could cause actual events or results to differ materially from those projected in the forward-looking statements.

Accordingly, investors are cautioned not to place undue reliance on such statements.

Exploration results and resources referred to in this presentation have previously been reported to the ASX on 30/12/2021, 10/02/2022, 04/04/2022, 11/05/2022, 16/06/2022, 30/08/2022, 21/12/2022, 28/02/2023, 12/04/2023, 03/05/2023, 11/05/2023, 05/06/2023, 07/07/2023, 10/07/2023, 17/07/2023, 24/07/2023, 01/09/2023, 05/09/2023, 05/10/2023, 30/10/2023, 06/11/2023, 29/11/2023, 07/12/2023, 21/12/2023, 15/01/2024, 13/02/2024, 15/03/2024, 30/04/2024, 09/05/2024, 16/05/2024, 13/06/2024, 26/06/2024, 10/07/2024 and 19/07/2024.

## COMPETENT PERSON STATEMENT

The information in this report that relates to Exploration Targets, Exploration Results, Mineral Resources or Ore Reserves is based on information compiled by Mr Thomas Reddicliffe a Competent Person who is a Fellow of the Australasian Institute of Mining and Metallurgy. Mr Reddicliffe is a Technical Director of GreenTech Metals Ltd.

Mr Reddicliffe has sufficient experience that is relevant to the style of mineralisation and type of deposits under consideration and to the activity being undertaken to qualify as a Competent Person as defined in the 2012 Edition of the 'Australasian Code for Reporting of Exploration Results, Mineral Resources and Ore Reserves', and a Specialist under the 2015 Edition of the 'Australasian Code for Public Reporting of technical assessments and valuations of mineral assets'.

Mr Reddicliffe consents to the inclusion in the report of the matters based on his information and in the form and context in which it appears.





## ACKNOWLEDGEMENT OF COUNTRY

GreenTech Metals acknowledges and pays respect to the Traditional Owner groups upon whose lands we operate. We recognise the unique cultural heritage of Aboriginal people and their continued connection to lands, waters and communities. We pay our respects to all Aboriginal people, and to Elders past, present and emerging.



# GREENTECH METALS - COMPANY SNAPSHOT

Battery metals focused explorer and developer advancing a portfolio of highly prospective projects in the West Pilbara region of Western Australia

**RUTH WELL / KOBE** Li

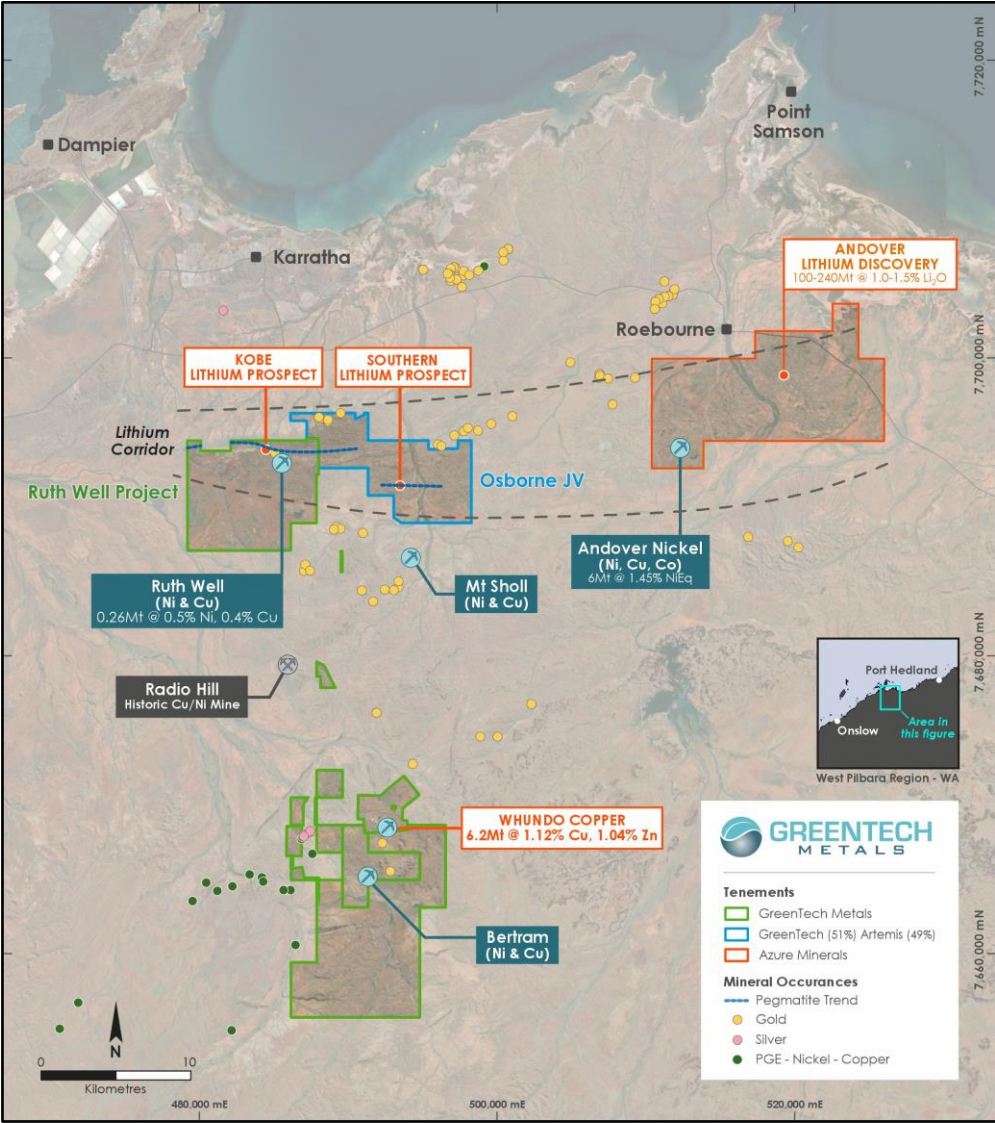
High-grade lithium pegmatite discovery  
Assays have returned up to **2.3% Li<sub>2</sub>O** over a **9km strike** length

**OSBORNE JV<sup>1</sup>** Li

High-grade lithium pegmatite discovery  
Assays have returned up to **3.6% Li<sub>2</sub>O** over a **5km strike** length

**WHUNDO** Cu Zn

High-grade Cu-Zn VMS cluster located close to existing infrastructure  
Resource of **6.2Mt @ 1.12% Cu and 1.04% Zn** with further drilling expected to increase resource



<b>SHARE PRICE</b>	<b>SHARES ON ISSUE</b>
<b>A\$0.135</b> (2 Aug 2024)	<b>83.08m</b>
<b>CASH</b>	<b>MARKET CAP</b>
<b>A\$1.76m</b> (June 2024)	<b>A\$11.2m</b> (2 Aug 2024)



**DIRECTORS & MANAGEMENT**

<b>Tom Reddicliffe</b>	Executive Director
<b>Guy Robertson</b>	Non-Executive Director
<b>Rod Webster</b>	Non-Executive Director
<b>Michael Fotios</b>	Technical Consultant
<b>Angus Miles</b>	Corporate Development
<b>Adrian Hell</b>	Exploration Manager

(1) Joint venture between GreenTech Metals (51%) and Artemis Resources (ASX:ARV; 49%).

# LEADERSHIP

Experienced leadership team with a broad range of mining industry experience



**THOMAS REDDCLIFFE**  
Executive Director

- Geologist with 40 years of largely Australian-focused exploration and evaluation
- Graduated with an Honours degree in Geology from the University of Queensland and MSc from UWA
- Fellow of the Australian Institute of Mining and Metallurgy
- Currently Chairman of Errawarra Resources (ASX:ERW) and Non-Executive Director of Gibb River Diamonds (ASX:GIB)



**ROD WEBSTER**  
Non-Executive Director

- Mining engineer (University of Sydney) with over 40 years of experience including more than 16 years as CEO of publicly listed companies
- Fellow of the Australian Institute of Mining and Metallurgy and Australian Institute of Company Directors
- Previous roles include management positions with Homestake Gold of Australia and BHP Minerals
- Founding Director and previous CEO of Weatherly, a company engaged in copper mining and smelting in Namibia
- Founding Director and CEO of Western Metals, a major Australian zinc and copper producer



**GUY ROBERTSON**  
Non-Executive Director

- 30 years of experience as a Director, CFO and Company Secretary of both ASX-listed and private companies in Australian and Hong Kong
- Experienced in corporate aggregation, IPO, capital raising and acquisition due diligence
- In addition to experience in the resources sector, previous roles include Finance Director and NSW MD of Jardine Lloyd Thompson, Group Director Finance and COO of Colliers Jardine Asia Pacific (based in Hong Kong) and GM Finance of Franklins Limited
- Currently Non-Executive Director of Hastings Technology (ASX:HAS) and Metalbank (ASX:MBK)



**MICHAEL FOTIOS**  
Technical Consultant

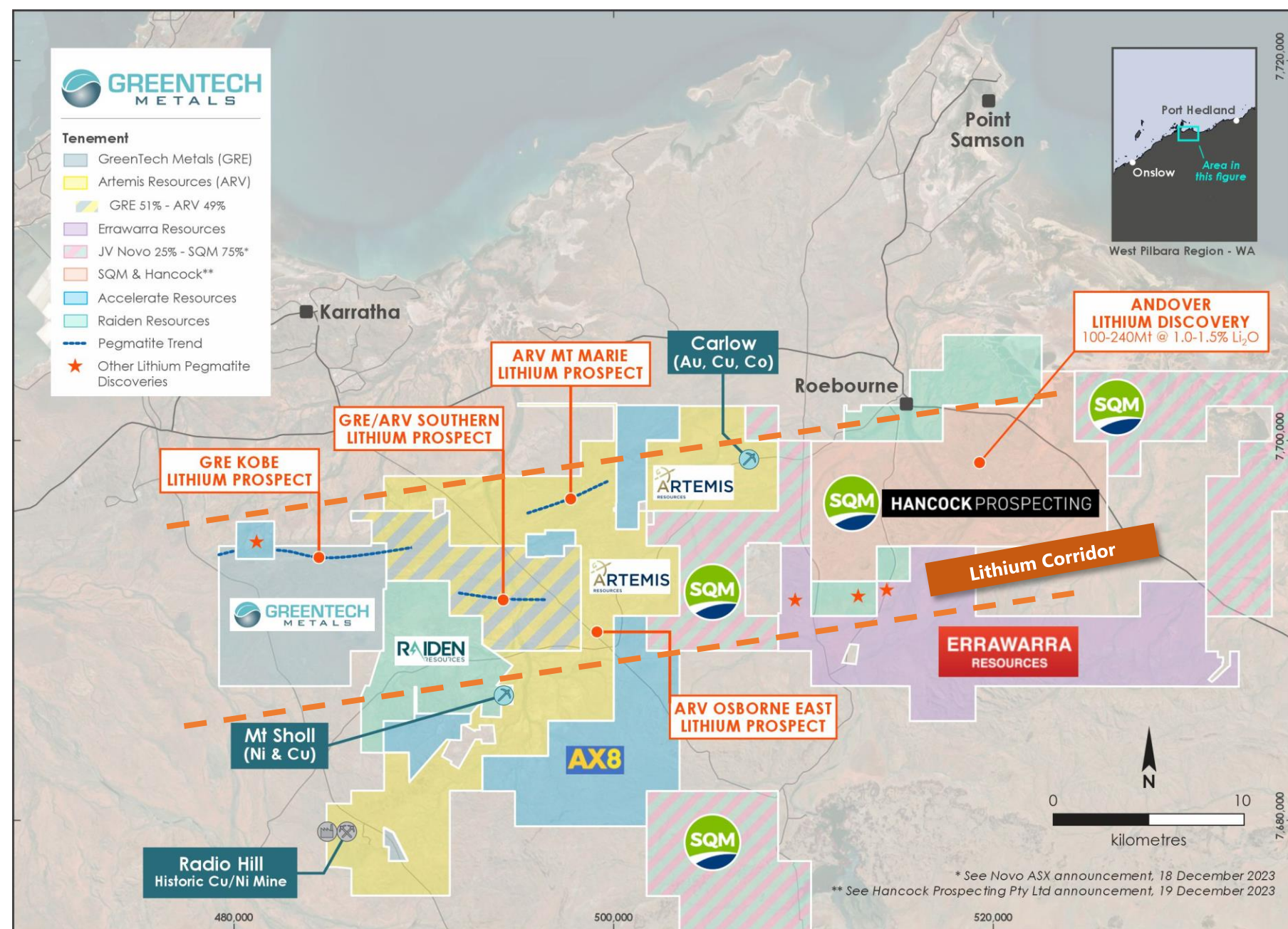
- CEO and Principal Consultant of Obsidian Metals Group (OMG) which has been engaged by GreenTech to explore for, evaluate and develop lithium bearing pegmatites throughout GreenTech's tenement package and the broader West Pilbara region of Western Australia
- Founding Managing Director of Galaxy Resources (now part of the Allkem Group, the fifth largest lithium producer globally)
- Extensive track record of taking projects from exploration through to production



## WEST PILBARA

# COMPETITIVE EXPLORATION AREA

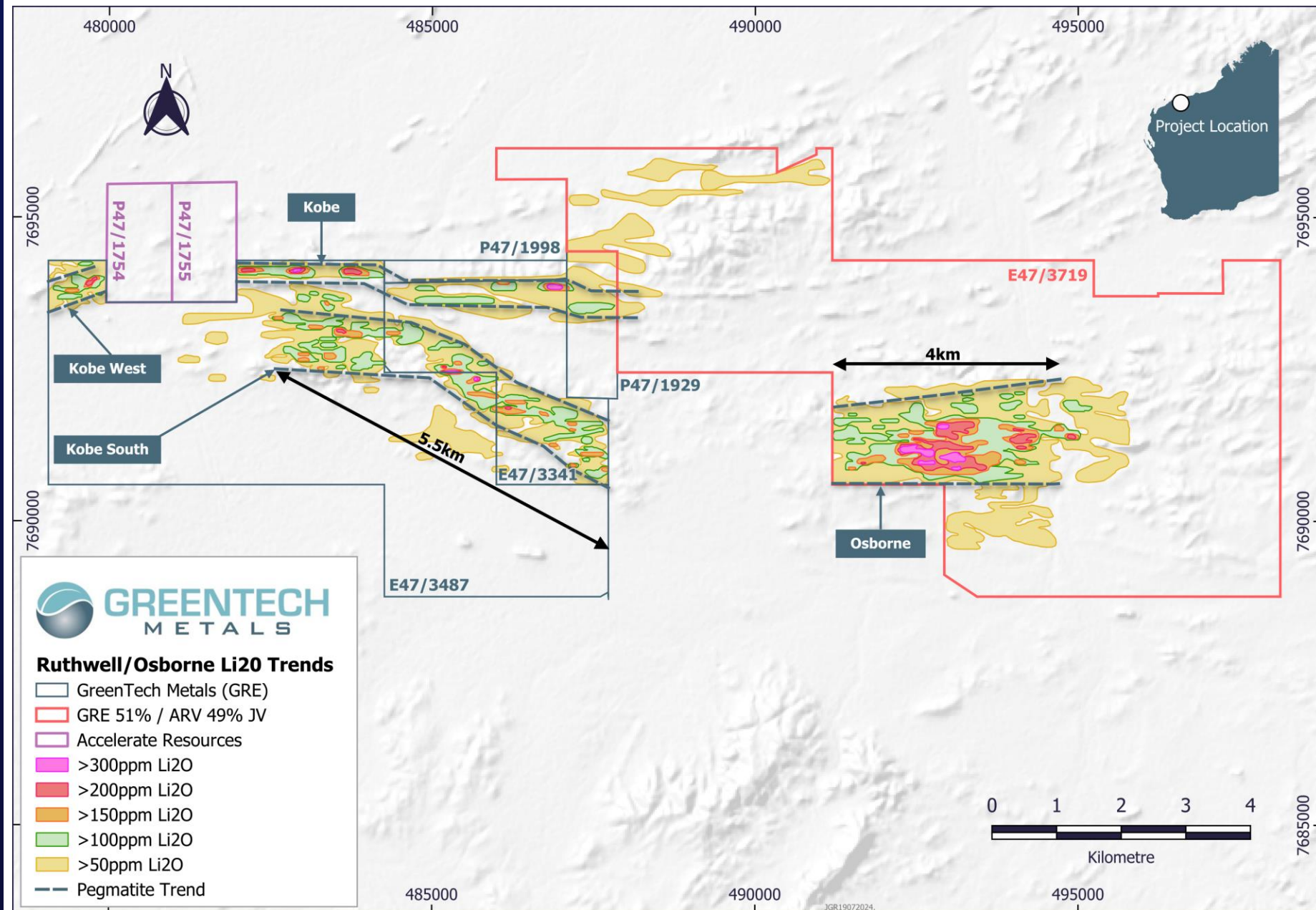
- West Pilbara Lithium activity sparked by Azure Minerals' major Andover LCT Pegmatite discovery
- Junior explorers in the region have made new significant lithium pegmatite discoveries
- Some discoveries have been subject to corporate interest from large players
- An emerging prospective lithium belt with a strike of over 40km
- **GreenTech has exploration rights to 20km of Li corridor within its 224km<sup>2</sup> tenure**





# EMERGING LITHIUM PROJECT

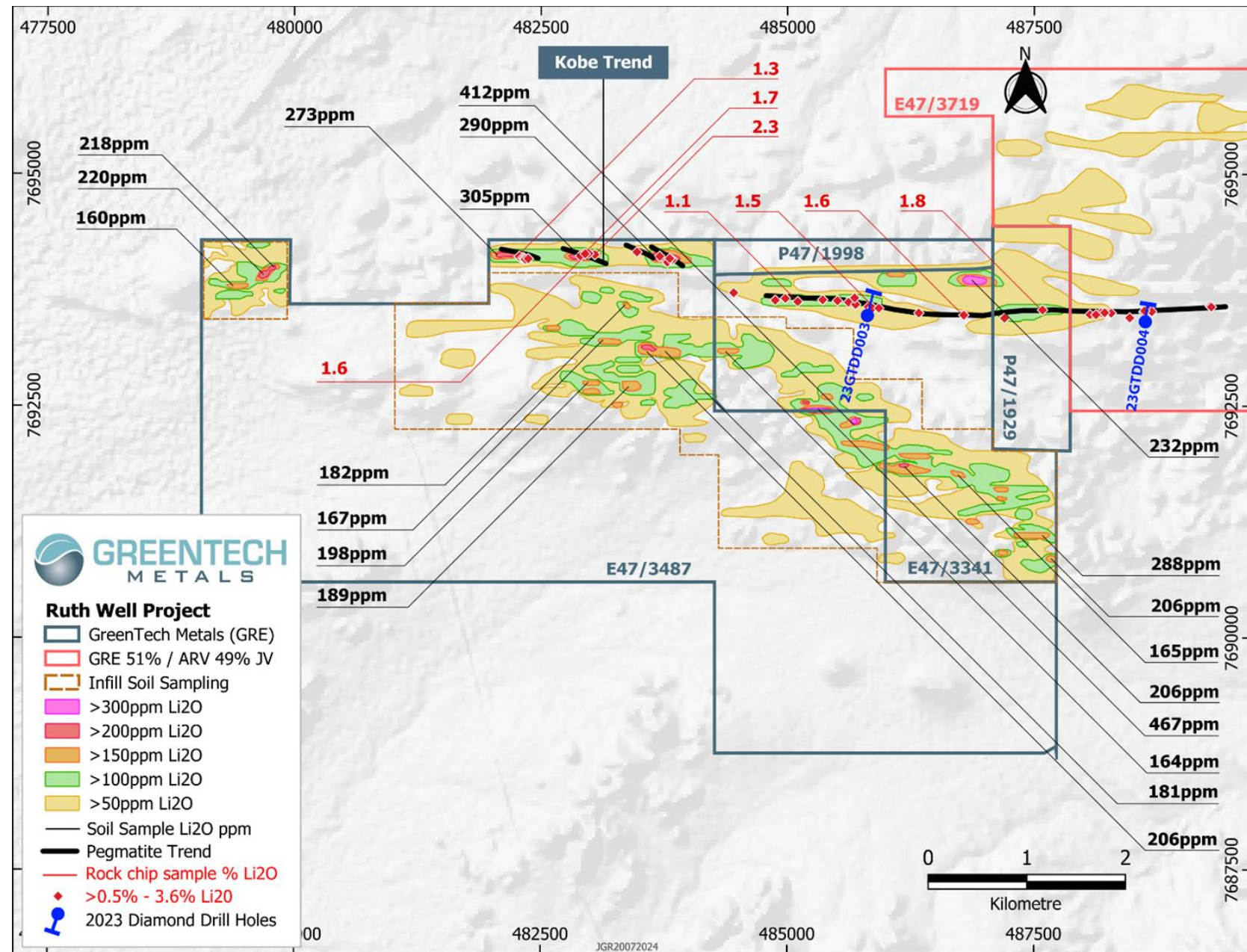
- Two lithium pegmatite trends with **over 12km combined strike** length identified to date
- Soils define a new lithium zone (**Kobe South**) extending west from the Osborne Southern Trend
- Mineralisation confirmed as **spodumene** in both trends
- **Multiple programs of works approved for ongoing activity**
- **Heritage surveys completed with more planned**
- Follow up **RC drilling campaign planned**



Soil sampling anomalies and outcrop mapping to date at the Ruth Well and Osborne

# KOBE (NORTHERN TREND)

- Kobe Trend extends for 9km of strike
- Individual pegmatite outcrop widths vary up to 6m at surface
- The trend is recessive in parts
- Mineralisation confirmed as **spodumene**
- Assays reported up to **2.3% Li<sub>2</sub>O** at the Kobe Trend
- Grades persist over entire strike length



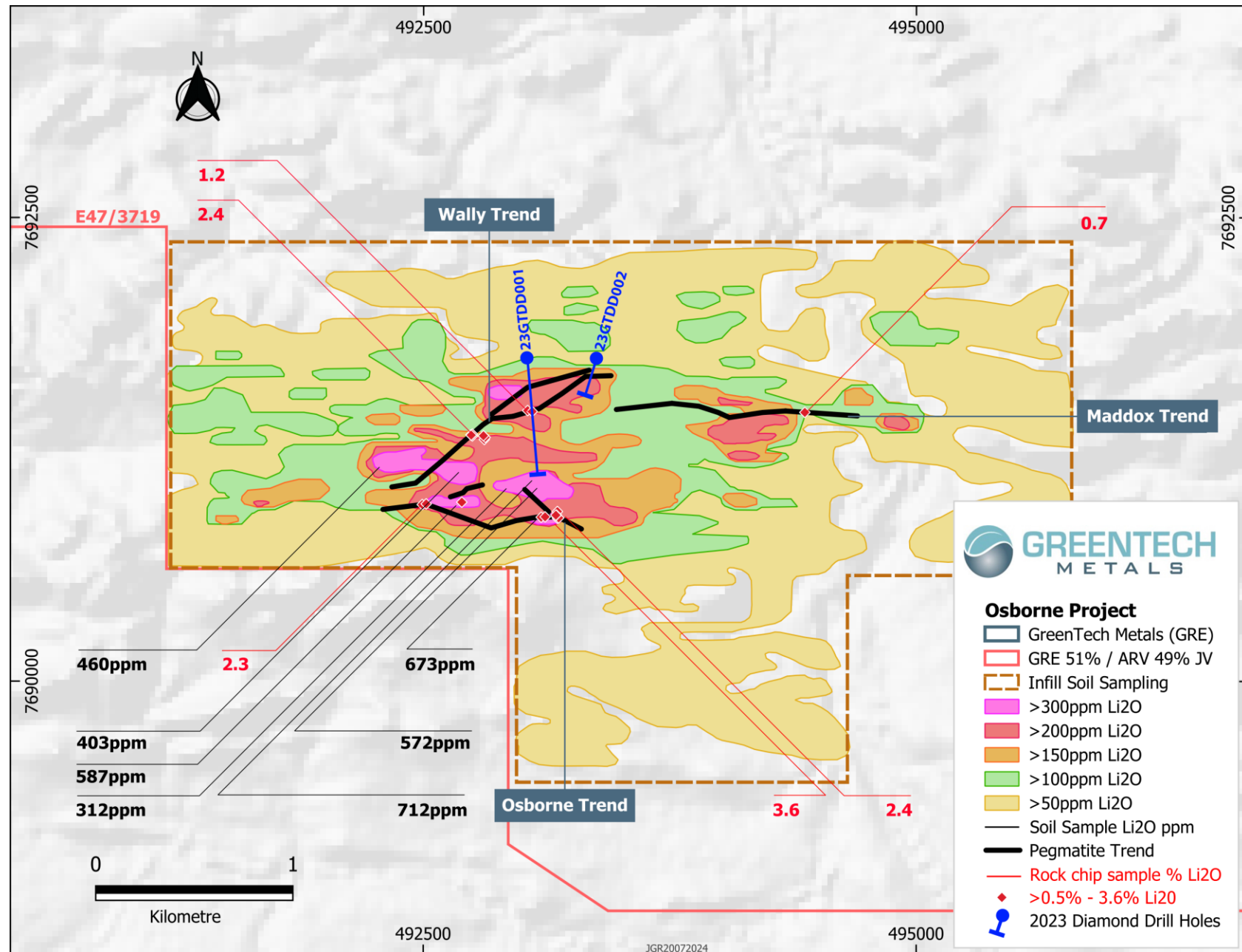
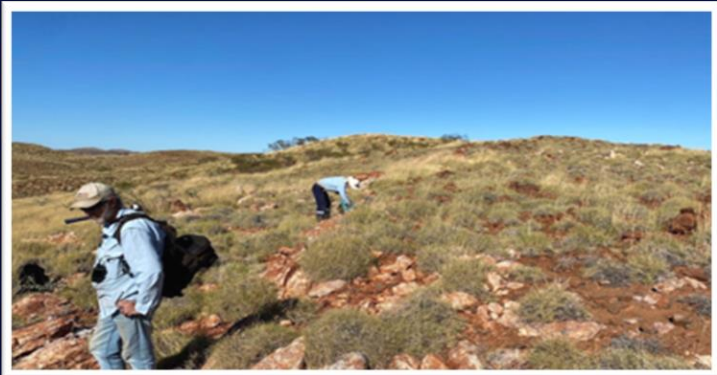
Soil sampling anomalies and outcrop mapping to date at the Kobe Trend



**OSBORNE JV: 51% GREENTECH**

# SOUTHERN TREND

- Combined lithium pegmatite trends have **over 5km strike** length identified to date
- Individual pegmatite outcrop widths vary up to 40m at surface
- Mineralisation confirmed as **spodumene**
- Assays reported up to **3.6% Li<sub>2</sub>O** at the Southern Trend
- **Osborne pegmatite** has 700m strike identified to date with **persistent high grade along strike**
- This high-grade pegmatite was not intersected by recent drilling



Soil sampling anomalies and outcrop mapping to date at the Southern Trend



WEST PILBARA LITHIUM

# FORWARD WORK PROGRAM

- **Field crews are currently undertaking exploration activities in the lead up to a maiden RC drilling program including:**
  - Mapping and structural interpretation
  - Infill soil sampling
  - Rock chip sampling
- **The company has approved programs of work (PoW's) and heritage clearances which facilitate current and future drill programs**



# COPPER PRICE APPROACHING HISTORICAL HIGHS



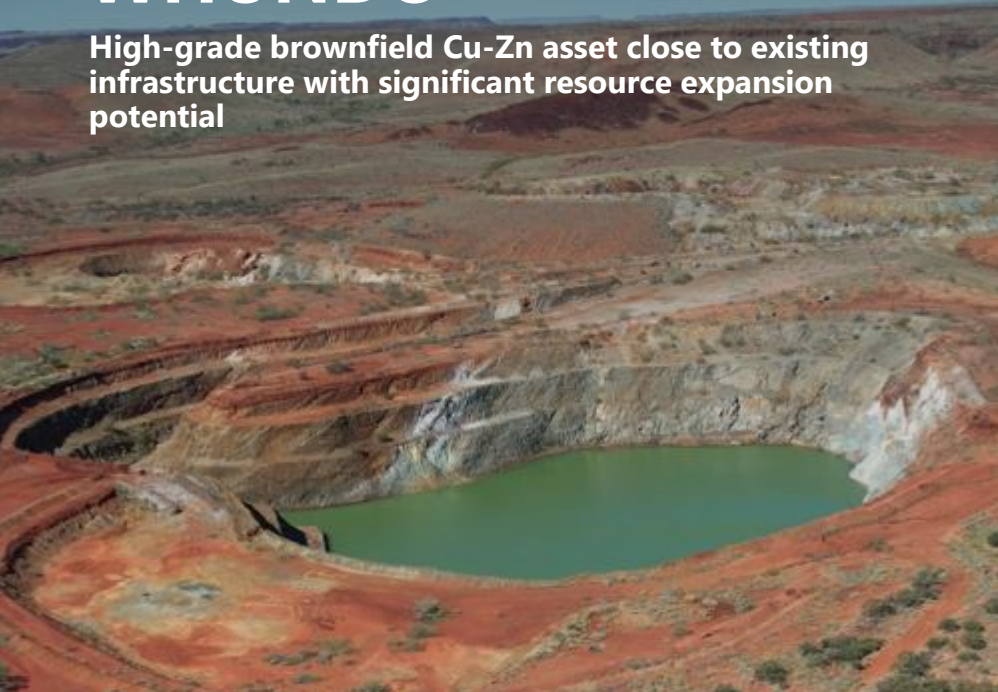
### 5 Year Copper Price<sup>1</sup>



(1) S&P Capital IQ as at 31 July 2024. LME-Copper Grade A Cash (\$/tonne) price presented.

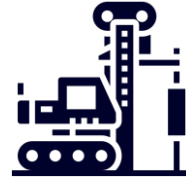
# WHUNDO

High-grade brownfield Cu-Zn asset close to existing infrastructure with significant resource expansion potential



## HIGH-GRADE RESOURCE FOUNDATION

- Project comprises six known Cu-Zn VMS style deposits over ~1.5km strike
- Combined 6.2Mt resource at Whundo East, Whundo West, Ayshia



## PURSUING SIGNIFICANT RESOURCE EXPANSION POTENTIAL

- 3 under-explored prospects at Austin, Yannery, Shelby
- The combined EM footprints of the Austin, Shelby and Yannery prospects is ~3 times that of Whundo East, Whundo West and Ayshia, indicating good potential to significantly increase project resources
- Active exploration focused on resource growth - staged drill program targeting the under-explored targets is ongoing



## ASSESSING DEVELOPMENT OPTIONS FOR EXISTING RESOURCE

- Pilbara Base Metal Alliance formed with Anax Metals
- Collaboration with Anax Metals to investigate potential for development and operational synergies of the Whundo and Whim Creek projects
- Project is within existing granted mining licenses
- ~10km from existing permitted Radio Hill processing facility and ~40km south of Karratha
- Nearby air, sea and land transport infrastructure all in place

### MINERAL RESOURCE ESTIMATE (JORC 2012)<sup>1</sup>

Area	Category	Tonnes (Mt)	Cu (%)	Zn (%)	Cu Metal (t)	Zn Metal (t)
Whundo	Indicated	4.4	1.03	0.89	45,000	39,000
	Inferred	0.9	1.4	0.5	12,000	4,000
Ayshia	Inferred	0.9	1.3	2.3	12,000	21,000
<b>Total</b>		<b>6.2</b>	<b>1.12</b>	<b>1.04</b>	<b>69,000</b>	<b>64,000</b>

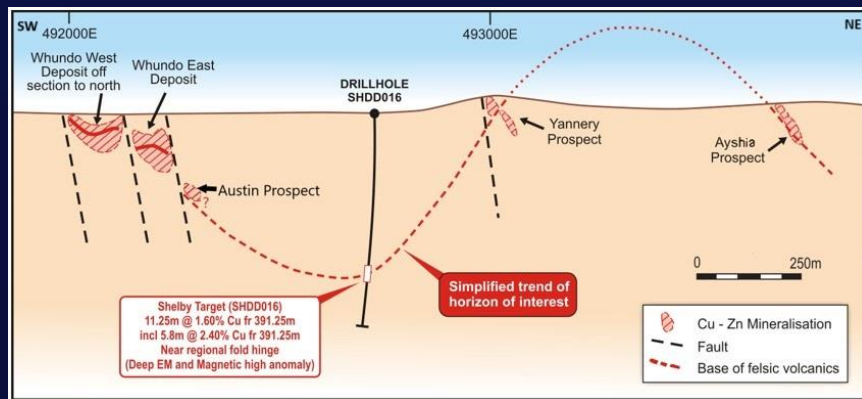


## WHUNDO

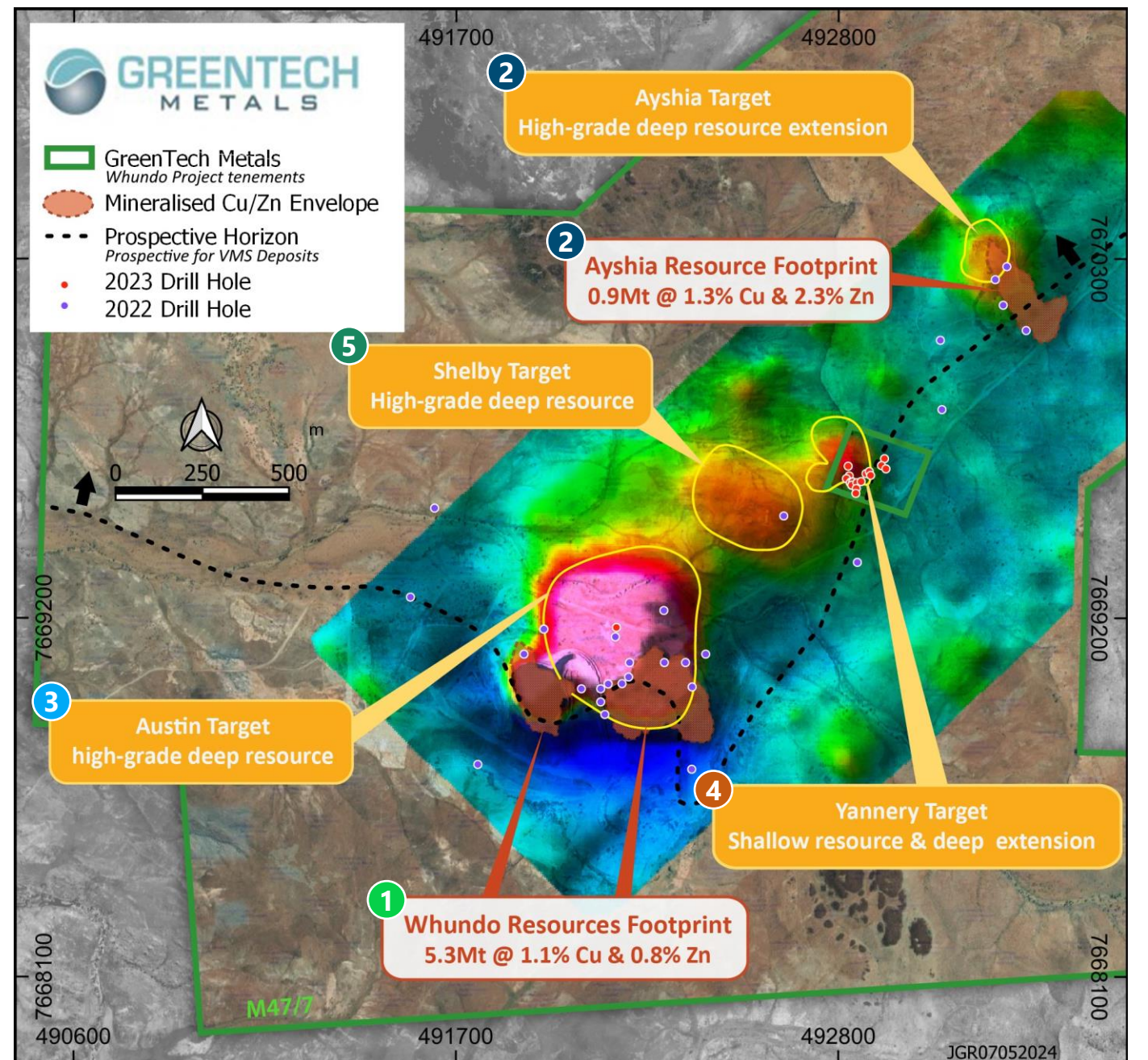
# PROJECT AREA

The Whundo project comprises six Cu-Zn VMS deposits and prospects over a 1.5km strike length

- 1 **Whundo West** and **Whundo East** deposits contain a Resource of **5.3Mt @ 1.1% Cu and 0.8% Zn**
- 2 **Ayshia** deposit is located ~1.5km northeast of main Whundo pits with a Resource of **0.9Mt @ 1.3% Cu and 2.3% Zn**
- 3 **Austin** underlies Whundo East; recent drilling has shown potential to significantly increase Whundo Resource
- 4 **Yannery** mineralised zone is currently up to 100m wide, plunges at least 150m and remains open at depth (this deposit requires drillout)
- 5 **Shelby** significant intercept reported of 11.25m @ 1.6% Cu from 391.25m incl. 5.8m @ 2.4% Cu from 391.25m



Horizontal outlook of Whundo project area



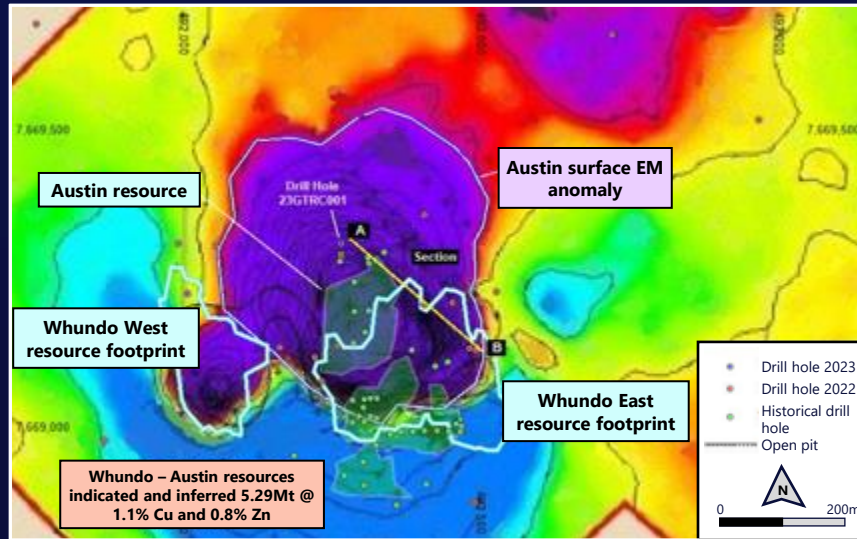
VMS copper-zinc deposits and targets at Whundo, Yannery and Ayshia



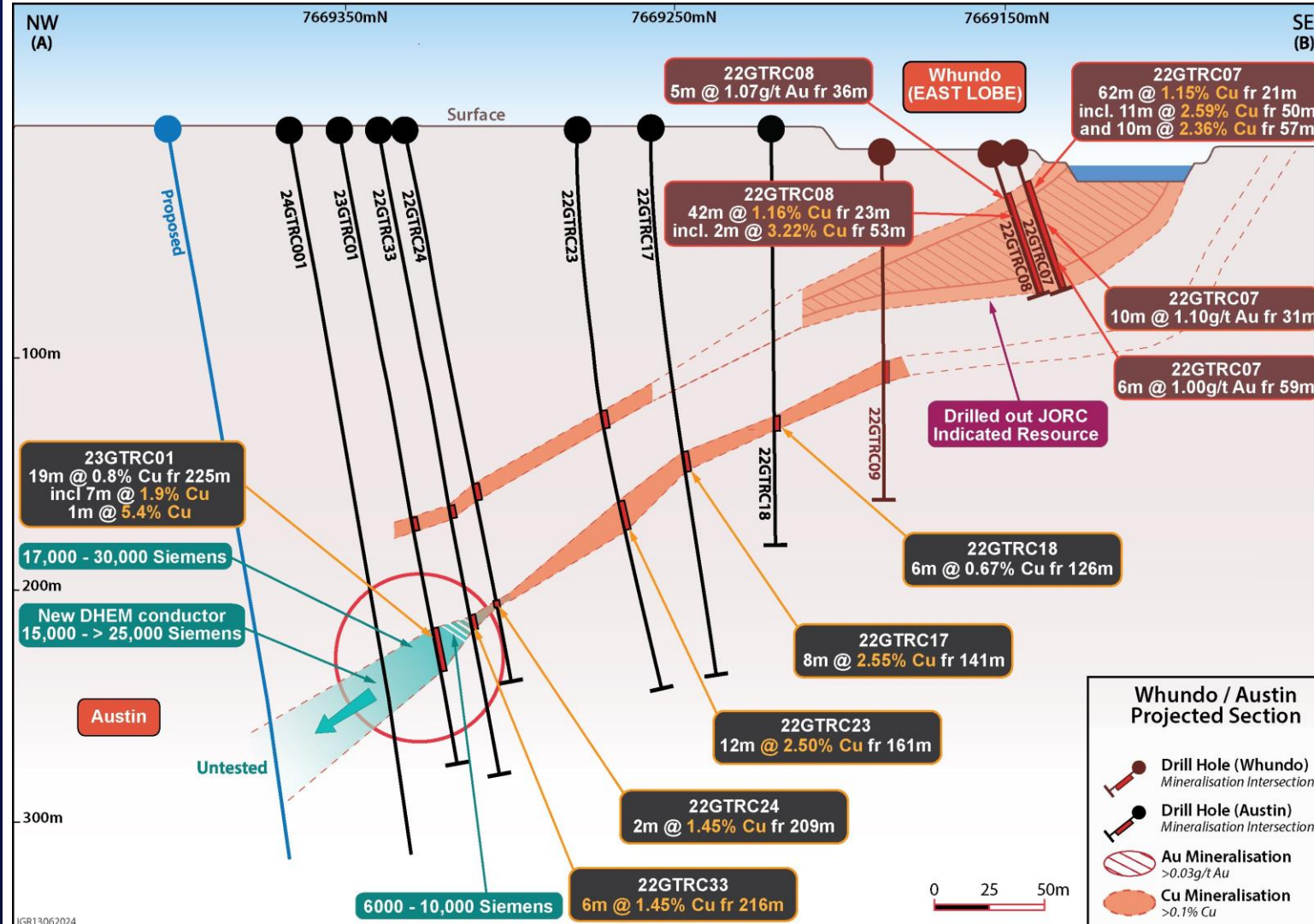
# WHUNDO AUSTIN

## Newly discovered zone with potential to significantly increase the existing Whundo project resource

- Recent drilling has confirmed a copper dominant mineralised horizon with significantly increased thickness and with individual peak assay values of up to **5.4% Cu**
- All drilling completed at average depths of <250m
- DHEM indicates thicker zone with off hole conductor of 15,000 to >25,000 siemens
- Size of Austin surface FLEM conductive response suggests potential to eclipse Whundo East in size
- Drill hole 24GTRC001 completed mid-July, assays pending



Conductive footprint of the Whundo and Austin Cu-Zn area



Austin mineralised horizon underplating Whundo on mag image



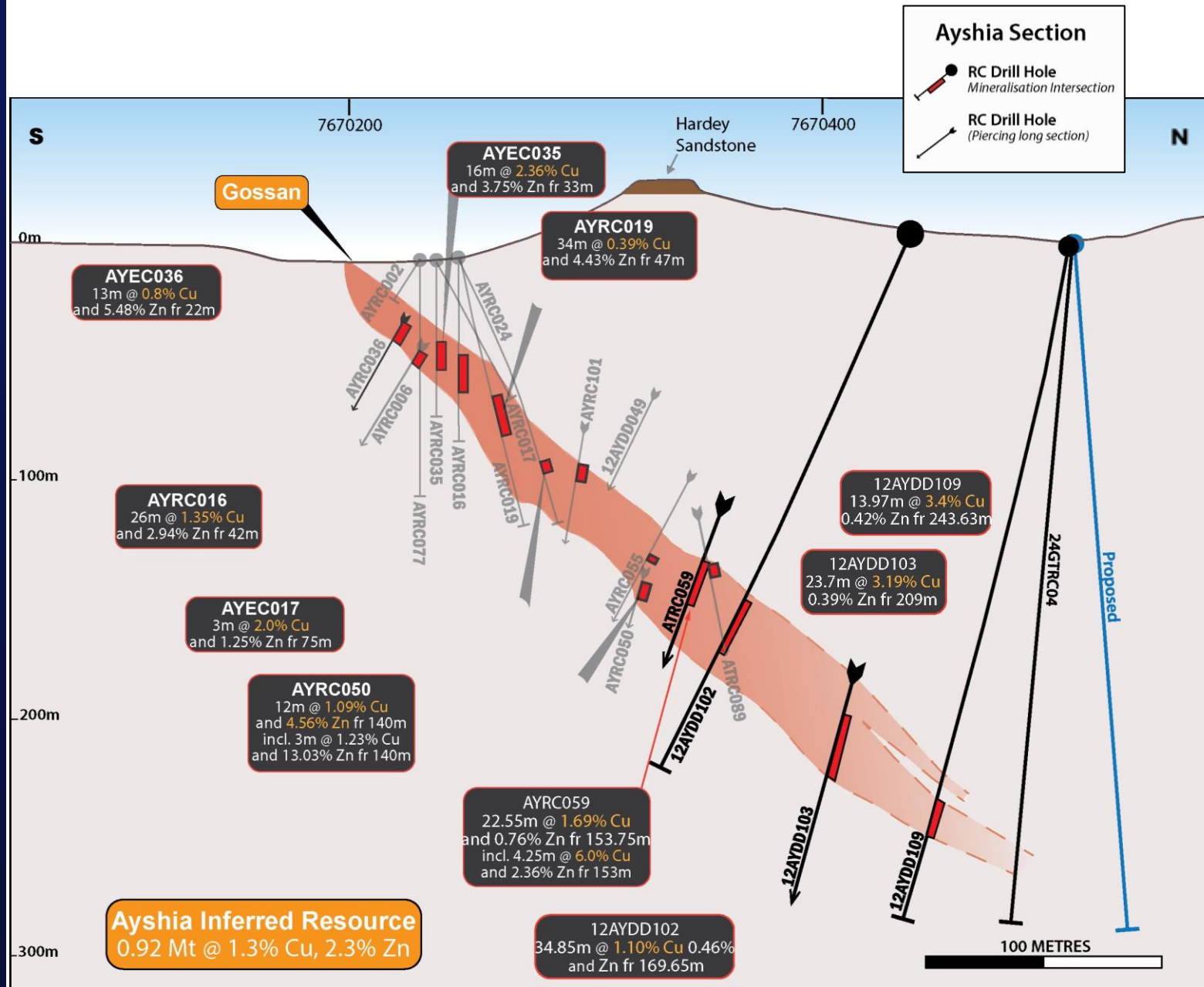
# WHUNDO AYSHIA

## A second potential ore source within the Whundo project area

- Located ~1.5km north-east of main Whundo pits
- Presents at surface as a narrow discontinuous zinc rich gossan and has no associated surface workings
- First drilled in 2006 by Fox Resources
- Mineralisation is zinc dominant in the upper portion and becomes copper dominant at depth
- High grade mineralised zone remains open at depth
- Drilling program comprising 7 holes for 1,136m was completed in 2022 with results incorporated into an upgraded JORC resource
- Drill hole 24GTRC04 completed mid-July, assays pending

### INFERRED RESOURCE ESTIMATE (JORC 2012) (as at March 2022)

Ore type	Tonnes (kt)	Cu (%)	Zn (%)	Cu Metal (t)	Zn Metal (t)
Oxide	82	0.6	4.9	6,810	1,839
Fresh	834	1.4	2.0	23,456	28,450
<b>Total</b>	<b>916</b>	<b>1.14</b>	<b>1.14</b>	<b>30,266</b>	<b>30,289</b>



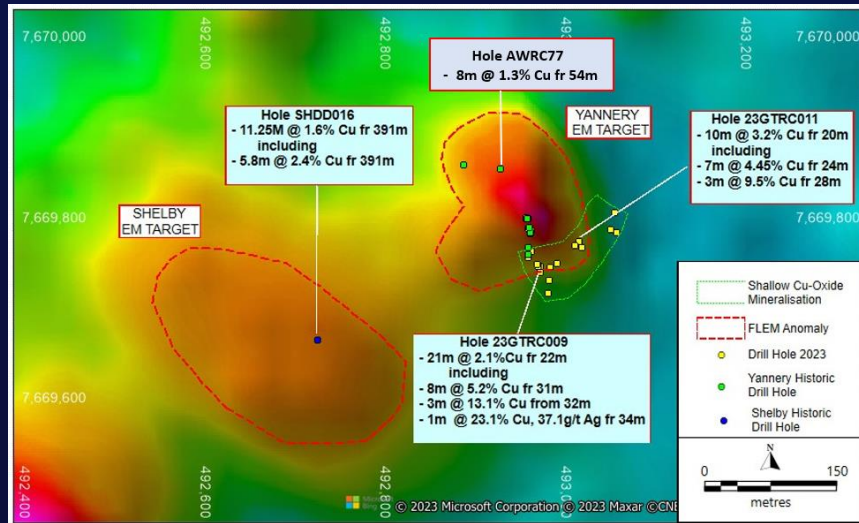
**Ayshia Inferred Resource**  
0.92 Mt @ 1.3% Cu, 2.3% Zn

Section of Ayshia deposit at the Whundo project area

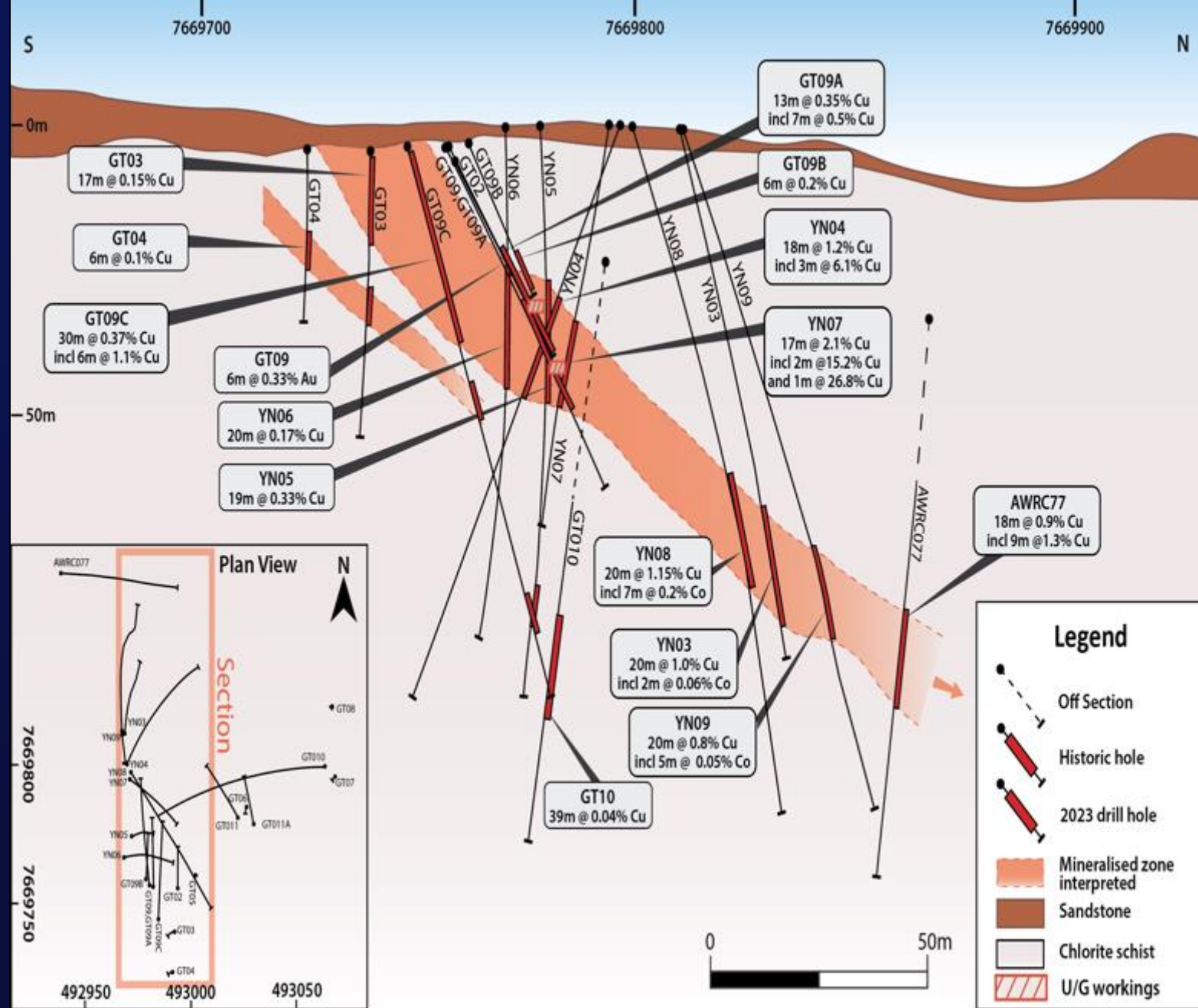
# WHUNDO YANNERY

**A third mineralised zone up to 100m wide plunging at least 150m and remains open at depth**

- Located ~800m north-east of main Whundo pits
- Recent drilling has identified a significant northerly dipping copper dominant mineralised horizon with a near surface width of ~100m mineralisation and confirmed the presence of near-surface high-grade supergene copper lodes
- Adds potential for further expansion of the current Whundo project Resource
- Work ongoing to explore the untested portions of the anomaly both laterally and down dip to quantify resource



Yannery plan view showing drill holes over FLEM survey



Interpreted NS section of the Yannery target at the Whundo project area





## WHUNDO

# FORWARD WORK PROGRAM<sup>1</sup>

## WHUNDO

- Ongoing resource modelling and mining studies

## AUSTIN

- Additional drill testing aimed at identifying thick, high-grade zones within the mineralised horizon

## SHELBY

- Additional drill testing aimed at identifying thick, high-grade zones within the mineralised horizon

## AYSHIA

- Further drilling to test for depth extension of high-grade Cu mineralisation

## YANNERY

- Detailed drilling of high grade near surface mineralisation to establish a resource estimate
- Drill to test the down dip extensions to the mineralisation within the largely untested FLEM anomaly

## BERTRAM

- Drill testing of conductor targets identified from recently completed FLEM survey
- Also ground reconnaissance, rock chip sampling and soil sampling to identify additional drill targets

# COPPER FOCUSED PILBARA BASE METAL ALLIANCE



GreenTech and Anax Metals (ASX:ANX) signed a **Memorandum of Understanding (MoU)** to assess potential to treat Whundo and other suitable GreenTech assets at Whim Creek processing hub



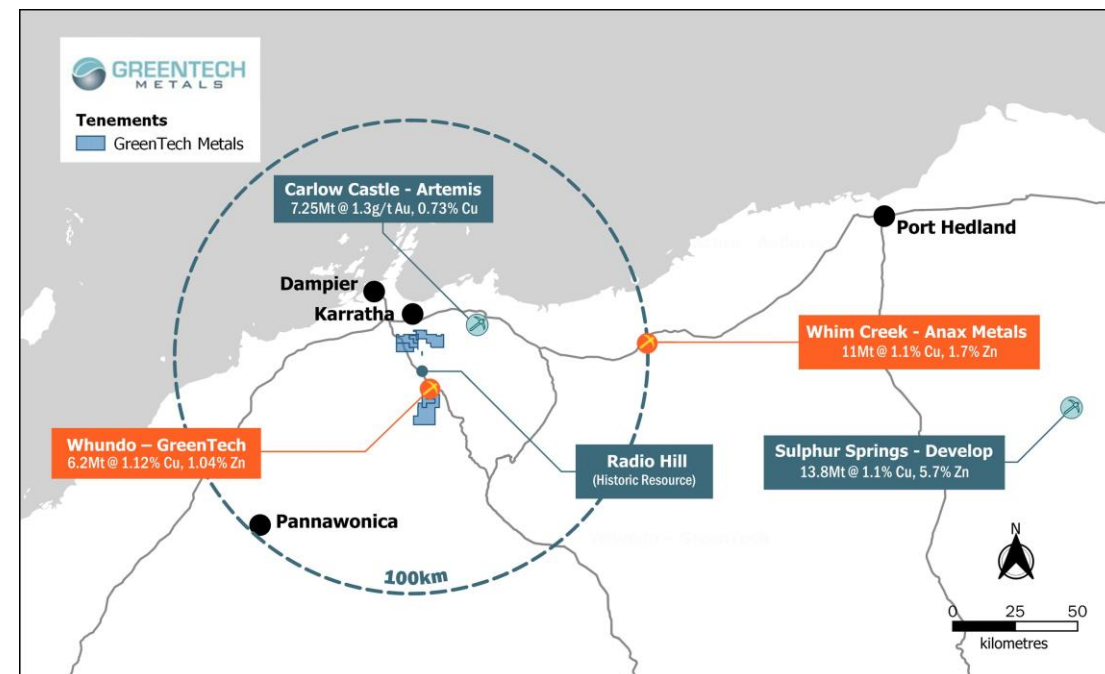
**Fully permitted Whim Creek processing assets** could provide near term processing option for GreenTech's open-pittable Whundo deposit



Alliance provides opportunity for GreenTech to **monetise Whundo open-pittable ore** in the near-term, **whilst progressing exploration** of the exciting Austin, Shelby, Ayshia and Yannery prospects



**GreenTech and Anax Metals collaborating** on feasibility studies and permitting







# INVESTMENT HIGHLIGHTS


 **Attractive suite of battery metals projects** including the Kobe and Southern lithium prospects and the advanced Whundo Copper project

 **Highly strategic location** in proximity to major mining and industrial hub at Karratha

 **Proven Mineral Resource at Whundo Copper of 6.2Mt @ 1.12% Cu, 1.04% Zn** with significant resource growth potential

 **Actively pursuing resource growth** at Whundo Copper with ongoing staged drill program. **Progressing exploration** of the highly prospective Kobe and Southern lithium prospects

 **West Pilbara Base Metal Alliance formed with Anax Metals** to assess opportunities to jointly develop the Whundo Copper and Whim Creek projects

 **Potential fast track to production** with Whundo Copper project area on existing mining licenses and proximal to both the existing Radio Hill and Whim Creek processing facilities and Karratha

## CONTACT

---


**Thomas Reddicliffe**  
Executive Director

**Angus Miles**  
Head of Corporate Development

Level 2, 10 Ord Street  
West Perth, Western Australia, 6005

**E:** [info@greentechmetals.com](mailto:info@greentechmetals.com)

**W:** [greentechmetals.com](http://greentechmetals.com)

 [in](#)