



**DIGGERS & DEALERS**  
MINING FORUM



# **GLOBAL LITHIUM** RESOURCES

## **Manna Lithium Project Update**

August 2024, Kalgoorlie, Western Australia

**ASX:GL1**

# Important Notice and Disclaimer

These presentation materials and the accompanying verbal presentation (together, the **Presentation Materials**) have been prepared by Global Lithium Resources Limited (**Global Lithium** or **Company**). By receiving the Presentation Materials, you acknowledge and represent to the Company that you have read, understood and accepted the terms of this disclaimer.

You must read this important notice before you attempt to access the Presentation Materials. The information on this page is not part of the Presentation Materials. If you do not understand it, you should consult your professional adviser without delay.

## NOT AN OFFER

These Presentation Materials are for information purposes only. The Presentation Materials do not comprise a prospectus, product disclosure statement or other offering document under Australian law (and will not be lodged with the Australian Securities and Investments Commission) or any other law.

The Presentation Materials also do not constitute or form part of any invitation, offer for sale or subscription or any solicitation for any offer to buy or subscribe for any securities nor shall they or any part of them form the basis of or be relied upon in connection therewith or act as any inducement to enter into any contract or commitment with respect to securities. In particular, these Presentation Materials do not constitute an offer to sell or a solicitation to buy, securities in the United States of America.

## NOT INVESTMENT ADVICE

The Presentation Materials are not investment or financial product advice (nor tax, accounting or legal advice) and are not intended to be used for the basis of making an investment decision. Recipients should obtain their own advice before making any investment decision.

## SUMMARY INFORMATION

The Presentation Materials do not purport to be all inclusive or to contain all information about the Company or any of the assets, current or future, of the Company.

The Presentation Materials contain summary information about the Company and its activities which is current as at the date of the Presentation Materials. The information in the Presentation Materials is of a general nature and does not purport to contain all the information which a prospective investor may require in evaluating a possible investment in the Company or that would be required in a prospectus or product disclosure statement or other offering document prepared in accordance with the requirements of Australian law or the laws of any other jurisdiction, including the United States of America.

The Company does not undertake to provide any additional or updated information whether as a result of new information, future events or results or otherwise.

## FORWARD LOOKING STATEMENTS

Certain statements contained in the Presentation Materials, including information as to the future financial or operating performance of the Company and its business operations, are forward looking statements. Such forward looking statements:

- are necessarily based upon a number of estimates and assumptions that, while considered reasonable by the Company, are inherently subject to significant technical, business, economic, competitive, political and social uncertainties and contingencies;

- involve known and unknown risks and uncertainties that could cause actual events or results to differ materially from estimated or anticipated events or results reflected in such forward looking statements; and may include, among other things, statements regarding estimates and assumptions in respect of prices, costs, results and capital expenditure, and are or may be based on assumptions and estimates related to future technical, economic, market, political, social and other conditions.

The Company disclaims any intent or obligation to publicly update any forward-looking statements, whether as a result of new information, future events or results or otherwise.

The words “believe”, “expect”, “anticipate”, “indicate”, “contemplate”, “target”, “plan”, “intends”, “continue”, “budget”, “estimate”, “may”, “will”, “schedule” and similar expressions identify forward looking statements.

All forward looking statements contained in the Presentation Materials are qualified by the foregoing cautionary statements. Recipients are cautioned that forward looking statements are not guarantees of future performance and accordingly recipients are cautioned not to put undue reliance on forward looking statements due to the inherent uncertainty therein.

## NO LIABILITY

The Company has prepared the Presentation Materials based on information available to it at the time of preparation. No representation or warranty, express or implied, is made as to the fairness, accuracy or completeness of the information, opinions and conclusions contained in the Presentation Materials. To the maximum extent permitted by law, the Company, its related bodies corporate (as that term is defined in the *Corporations Act 2001* (Cth) (**Corporations Act**)) and the officers, directors, employees, advisers and agents of those entities do not accept any responsibility or liability including, without limitation, any liability arising from fault or negligence on the part of any person, for any loss arising from the use of the Presentation Materials or its contents or otherwise arising in connection with it.

## COMPLIANCE STATEMENTS

The Company confirms that it is not aware of any new information or data that materially affects the information in the relevant market announcements, and that the form and context in which the Competent Persons findings are presented have not been materially modified from the original announcements.

Where the Company refers to the Manna Lithium Project production target in this announcement (referencing previous releases made to the ASX), it confirms that it is not aware of any new information or data that materially affects the information included in that announcement and that all material assumptions and technical parameters underpinning the production target estimate or forecast financial information derived from the production target (as applicable) in that announcement continue to apply and have not materially changed. The Company confirms that the form and context in which the Competent Persons findings are presented have not materially changed from the original announcement.

Where the Company refers to Mineral Resources in this announcement (referencing previous releases made to the ASX), it confirms that it is not aware of any new information or data that materially affects the information included in that announcement and all material assumptions and technical parameters underpinning the Mineral Resource estimate with that announcement continue to apply and have not materially changed. The Company confirms that the form and context in which the Competent Persons findings are presented have not materially changed from the original announcement.

# Acknowledgement of Country



I begin today by acknowledging the Wongutha people, Traditional Custodians of the land on which we gather today, and pay my respects to their Elders past and present.

And we are very grateful to have some of the Kakarra Traditional Owners with us today.

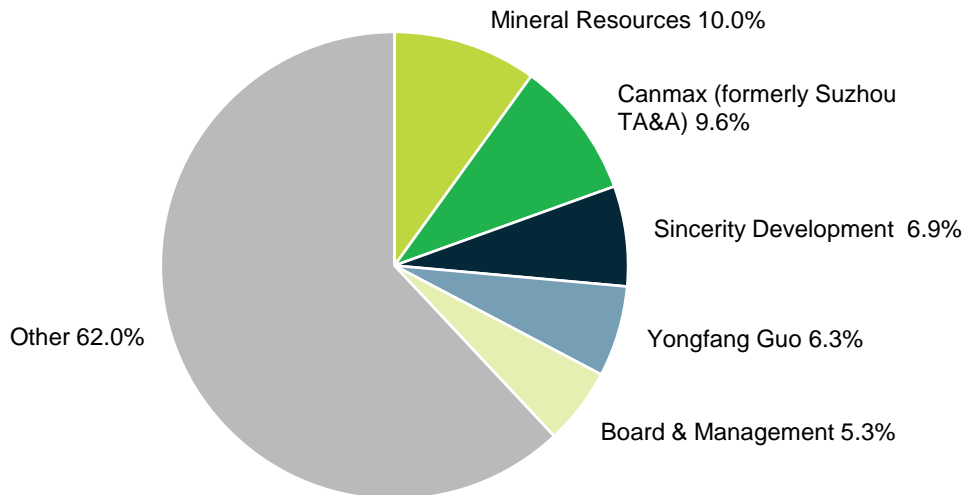
# GL1 Corporate Snapshot (5 August 2024)

Market Cap	Share Price	Shares on issue
<b>A\$67.6m</b>	<b>A\$0.26</b>	<b>260m</b>
Options <sup>1</sup>	Cash <sup>2</sup>	Equity in ASX:KAL <sup>3&amp;4</sup>
<b>18.5m</b>	<b>A\$27m</b>	<b>A\$2.9m (10%)</b>

## ASX share price performance



## Share Register



## Board



**Ron Mitchell**  
Executive Chair



**Dr Dianmin Chen**  
Executive Director



**Hayley Lawrance**  
Non-Executive Director



**Greg Lilleyman**  
Non-Executive Director



**Kevin Hart**  
Company Secretary

<sup>1</sup> Including various tranches of performance rights. <sup>2</sup> As of 30 June 2024 <sup>3</sup> Refer ASX release titled "MANNA LITHIUM PROJECT EXPANSION OF REGIONAL INTERESTS", 26 JUNE 2023, incl. Right Issue of 44m shares. <sup>4</sup> As of 6 August 24

# Recent Highlights

- The Manna Lithium Deposit **Mineral Resource Estimate (MRE) increases by 43% to 51.6Mt @ 1.0% Li<sub>2</sub>O** positioning the project as the 2nd largest lithium resource in the Kalgoorlie Lithium Province<sup>1</sup>
  - **26% increase** in total contained Li<sub>2</sub>O from 406,000 tonnes to **515,000 tonnes Li<sub>2</sub>O**
  - Contained **Lithium Carbonate Equivalent (LCE) of 1,276 Kt**
  - **63% increase** in Indicated JORC classification to **32.9Mt @ 1.04% Li<sub>2</sub>O**
  - New MRE model to be utilised in the Manna Definitive Feasibility Study (**DFS**), expected to be released in H2 CY24
- Final Metallurgical locked cycle testwork nearing completion, anticipating +75% recovery<sup>2</sup>
- Continued engagement with Kakarra Part B Native Title Group to finalise **Native Title Mining Agreement**
- Based on CY24 6,000m RC drill results, an undercover Southwest extension to the Manna Lithium Deposit has been confirmed over a 600m strike length<sup>3</sup>
- Disciplined and well capitalised **\$27M cash at hand and no debt**



<sup>1</sup> Refer ASX release titled "43% INCREASE IN MANNA LITHIUM DEPOSIT MINERAL RESOURCE TO 51.6MT @ 1.0% Li<sub>2</sub>O", 12 June 2024

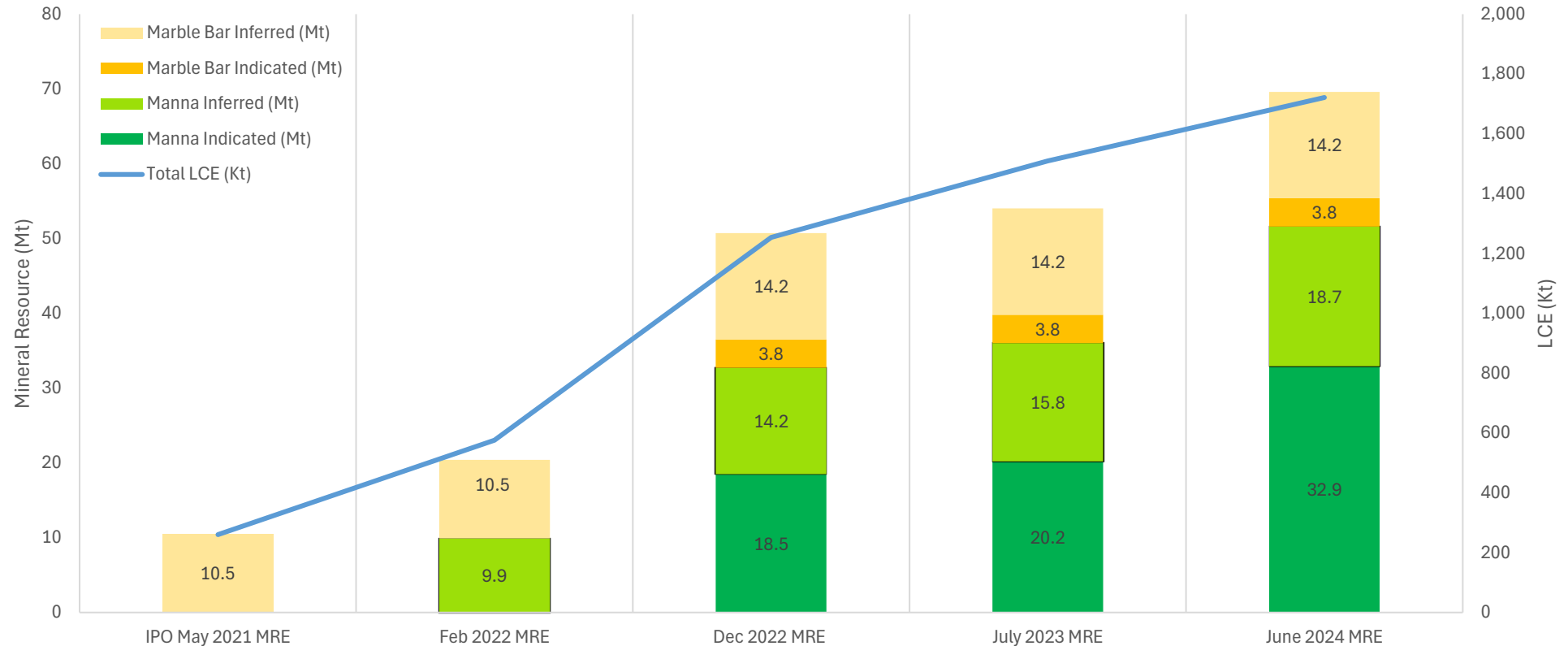
<sup>2</sup> Refer ASX release titled "Manna Metallurgical Testwork Update", 7 March 2024

<sup>3</sup> Refer ASX release titled "DRILL RESULTS CONFIRM MANNA LITHIUM DEPOSIT EXTENSION", 1 August 2024

# Lithium Resource Growth Since IPO 2021

Manna Lithium Project: 51.6Mt @ 1.0% Li<sub>2</sub>O | Marble Bar Lithium Project: 18Mt @ 1.0% Li<sub>2</sub>O

Manna & Marble Bar Lithium Project  
Resource Growth and Classification Breakdown



# MANNA LITHIUM PROJECT

- 100% owned
- Infrastructure rich, Tier 1 mining jurisdiction
- Spodumene dominant hard rock lithium pegmatite
- Current Indicated & Inferred Mineral Resource of **51.6Mt @ 1.0% Li<sub>2</sub>O**
- Definitive Feasibility Study to conclude in CY24

# Kalgoorlie Lithium Province – Manna is the 2<sup>nd</sup> Largest Resource



Major Mines & Projects



City of Kalgoorlie-Boulder



Access to Railway



Access Road



Repeater Station  
(Fibre link connection)

High-speed Data



Utilities





# Multiple Logistics Pathways

- **Logistics Options:** Road or Railway haulage from Manna to Esperance
- **Loading at Manna:** Loose bulk; A-triple road trains; Payload of 98 tonnes per combo
- **Transport Route:** Road or railway transport to storage facility near the Port of Esperance
- **Unloading at Storage Facility:** In bulk, stored until the projected shipping parcel size of 30kt tonnes is reached
- **Transport to Esperance Port:** Loaded into rotaboxes; Transported by road or railway to Esperance Port, Berth 2
- **Ship-loading:** Using crane and rotabox spreader; Loaded onto 30k dwt Handy size vessels



*Inland Container Terminals for Concentrate*



*Containers on Train*



*Container Park Truck Unload*



*Rotainer Tipping*



*Site inspection of spodumene bearing pegmatite at Manna*

- Three years of exploration:
  - CY22 – 46,000m<sup>1</sup>
  - CY23 – 60,000m<sup>2</sup>
  - CY24 - 6,000m<sup>3</sup>
  - MRE (51.6Mt @ 1.0%)<sup>4</sup>
- CY23 infill drilling has increased confidence in resource classification
- Manna deposit strike length 3.2km
- Resource open at depth and in multiple directions
- Direct and indirect landholding increased 280% to 700km<sup>2</sup> in 2023

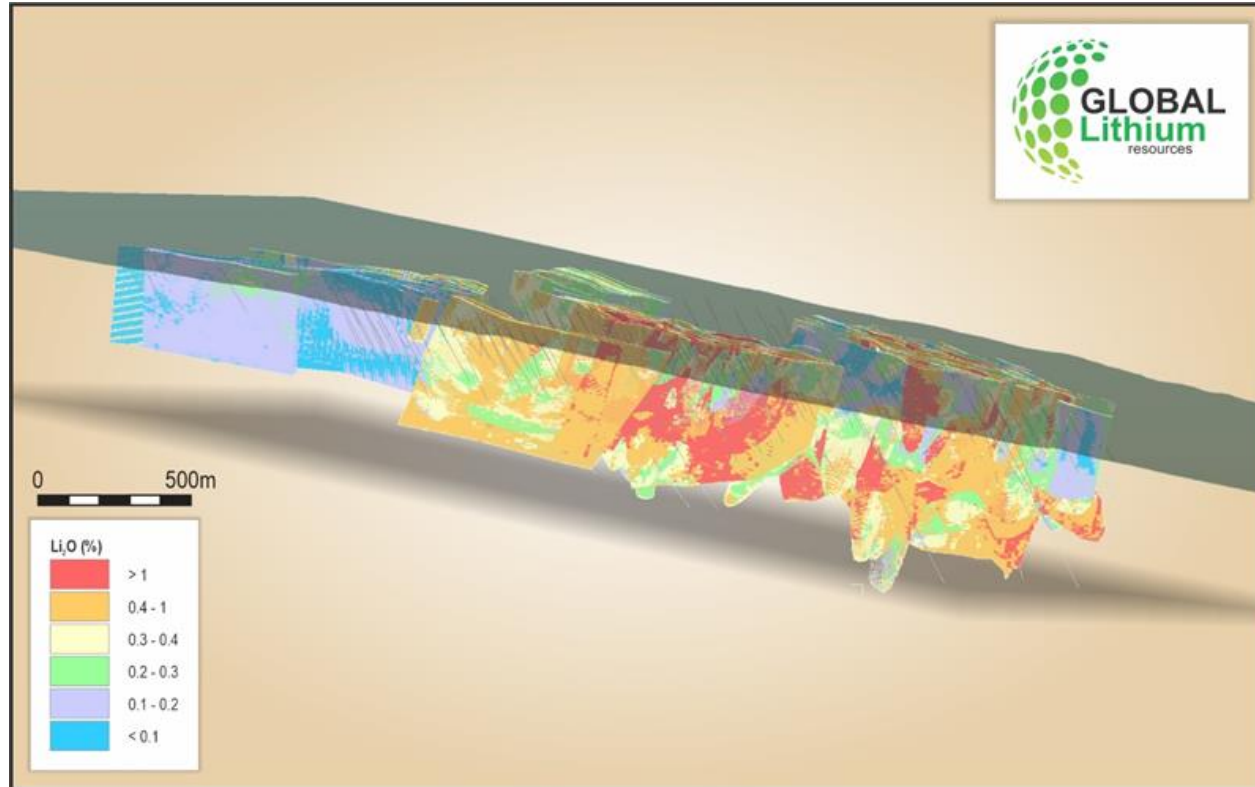
<sup>1</sup> Refer ASX release titled "COMPLETION OF MANNA TRANSACTION AND STRATEGIC PLACEMENT", 15 November 2022.

<sup>2</sup> Refer ASX release titled "2023 MANNA DRILLING PROGRAM COMPLETES", 8 December 2023

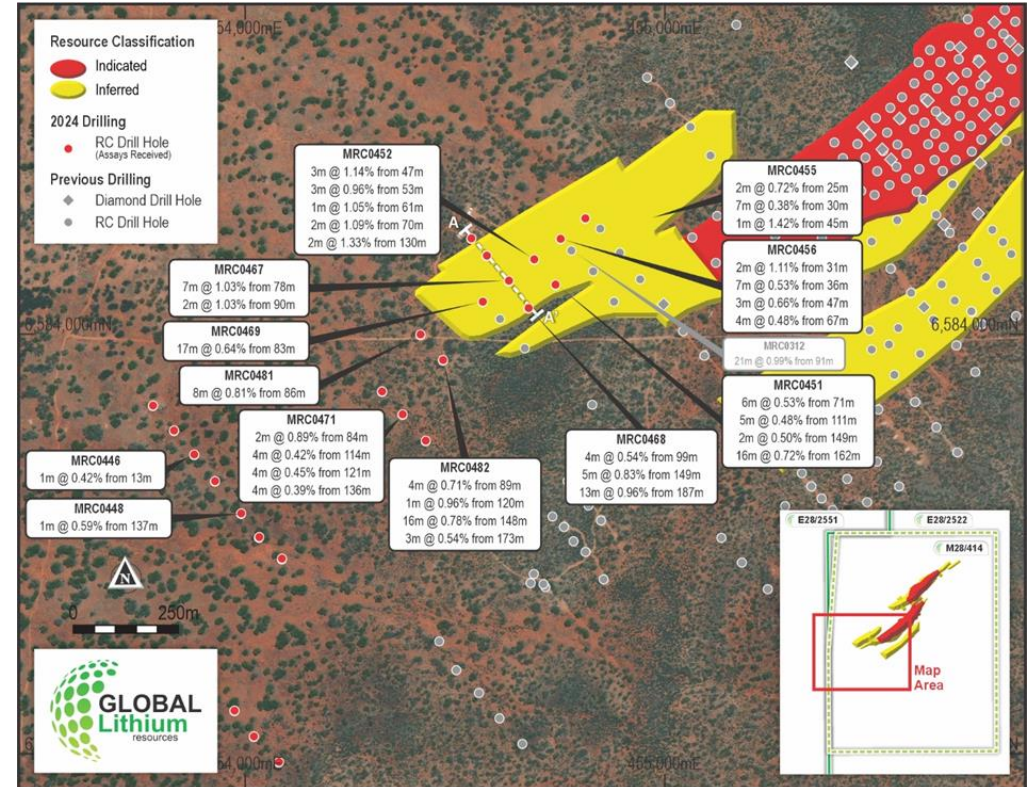
<sup>3</sup> Refer ASX release titled "DRILLING STARTS AT MANNA", 2 May 2024

<sup>4</sup> Refer ASX release titled "43% INCREASE IN MANNA LITHIUM DEPOSIT MINERAL RESOURCE TO 51.6MT @ 1.0% LI<sub>2</sub>O", 12 June 2024

# Exploration – Resource Extension



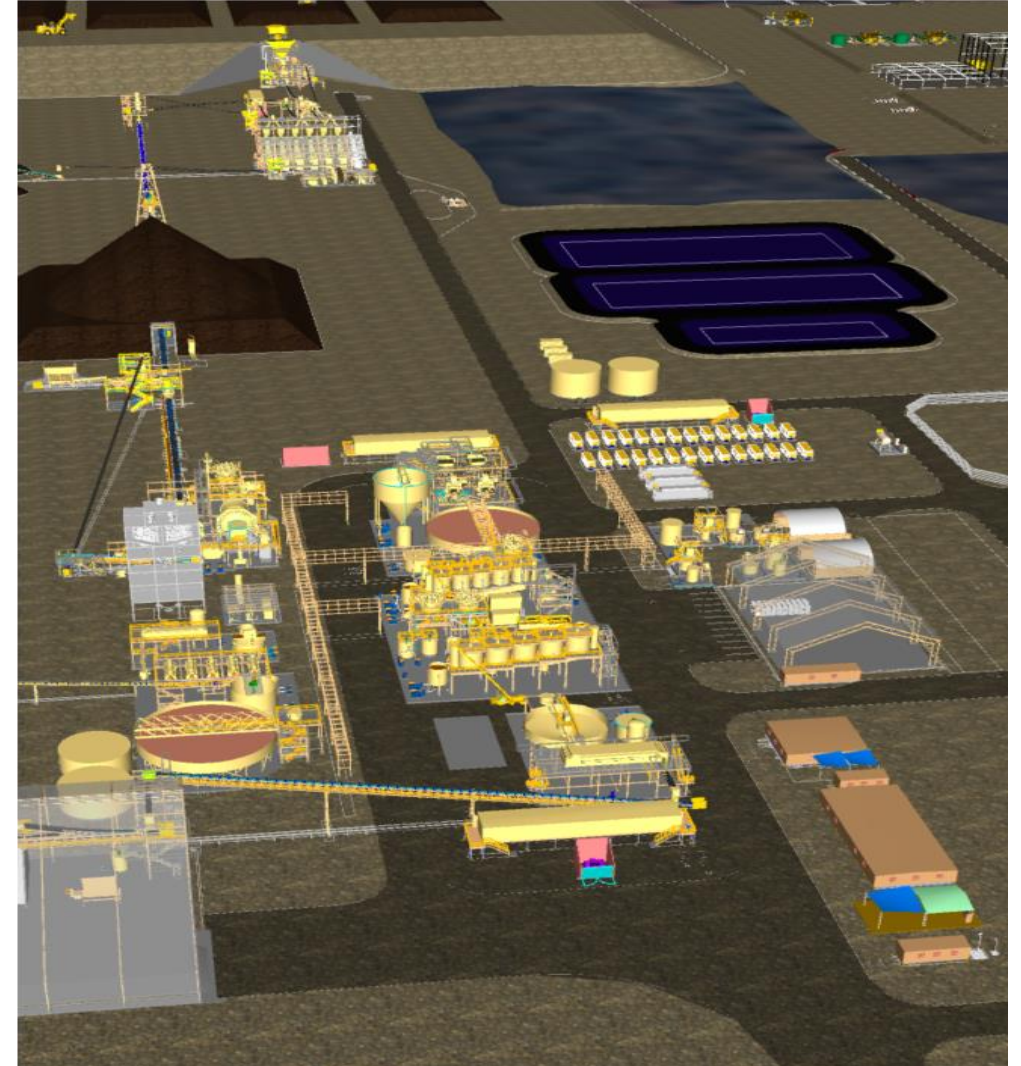
Manna Lithium Resource Block Model



Significant intercepts within southwestern extension to the Manna Lithium Deposit<sup>1</sup>

# Definitive Feasibility Study – Nearing Completion

- DFS and related metallurgical studies well advanced
- DFS to conclude in CY24 and incorporate:
  - ✓ Updated MRE including all CY23 drilling program results
  - ✓ Detailed open pit and underground mine schedules
  - ✓ Optimised metallurgical testwork results
  - ✓ Detailed operating and capital cost estimates
- Plant layout being optimised for constructability and reduce site construction hours
- SRK performing independent mining technical peer review
- GR Engineering Services (ASX:GNG) performing independent CAPEX review



*Manna Lithium Project Plant 3D Model*

# Land Access- Well Advanced

## Mining Lease

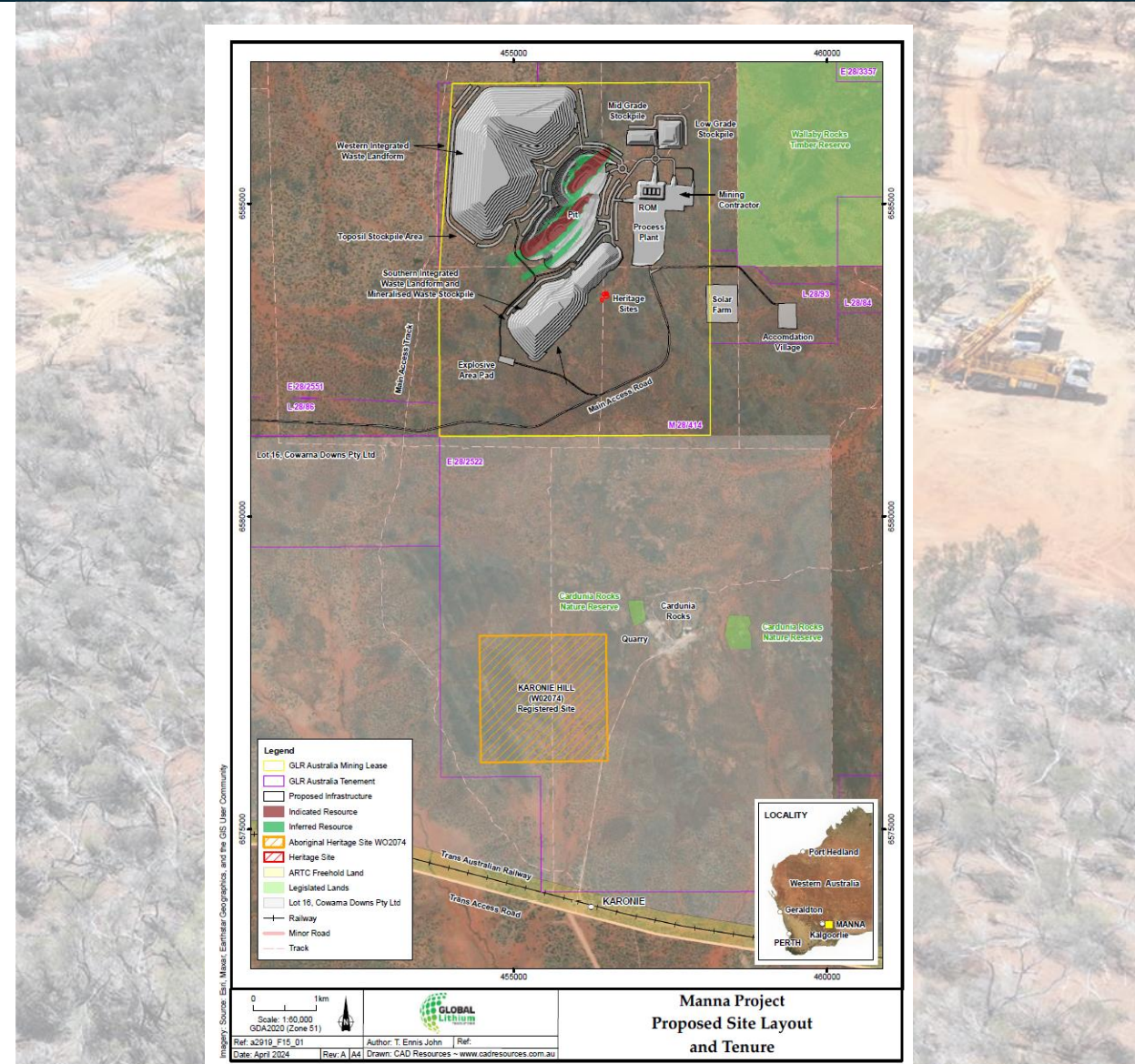
- Mining Lease application (MLA 28/414) lodged with Department of Energy, Mines, Industry Regulation and Safety (DEMIRS)
- Mine layout has been finalised

## Native Title

- Native Title Mining Agreement (NTMA) negotiation well advanced

## Miscellaneous Licences

- Applications lodged for village, airstrip, infrastructure corridors and access roads



Manna mining lease application map

# Approvals – Heritage & Environmental

Activities	Status
<b>Heritage</b>	
<b>Heritage Surveys</b>	<ul style="list-style-type: none"> <li>Completed over Mining Lease with no culturally significant sites impacted</li> </ul>
<b>Environmental</b>	
<b>Flora and Fauna surveys</b>	<ul style="list-style-type: none"> <li>Completed over Mining Lease with no significant impacts identified</li> </ul>
<b>Mining Proposal and Mine Closure Plan</b>	<ul style="list-style-type: none"> <li>Applications well advanced</li> <li>To be lodged upon grant of Mining Lease</li> </ul>
<b>Works Approval and Native Vegetation Clearing Permit applications</b>	<ul style="list-style-type: none"> <li>Applications well advanced</li> </ul>



*Manna Heritage Survey – July 2023*

# Community Engagement

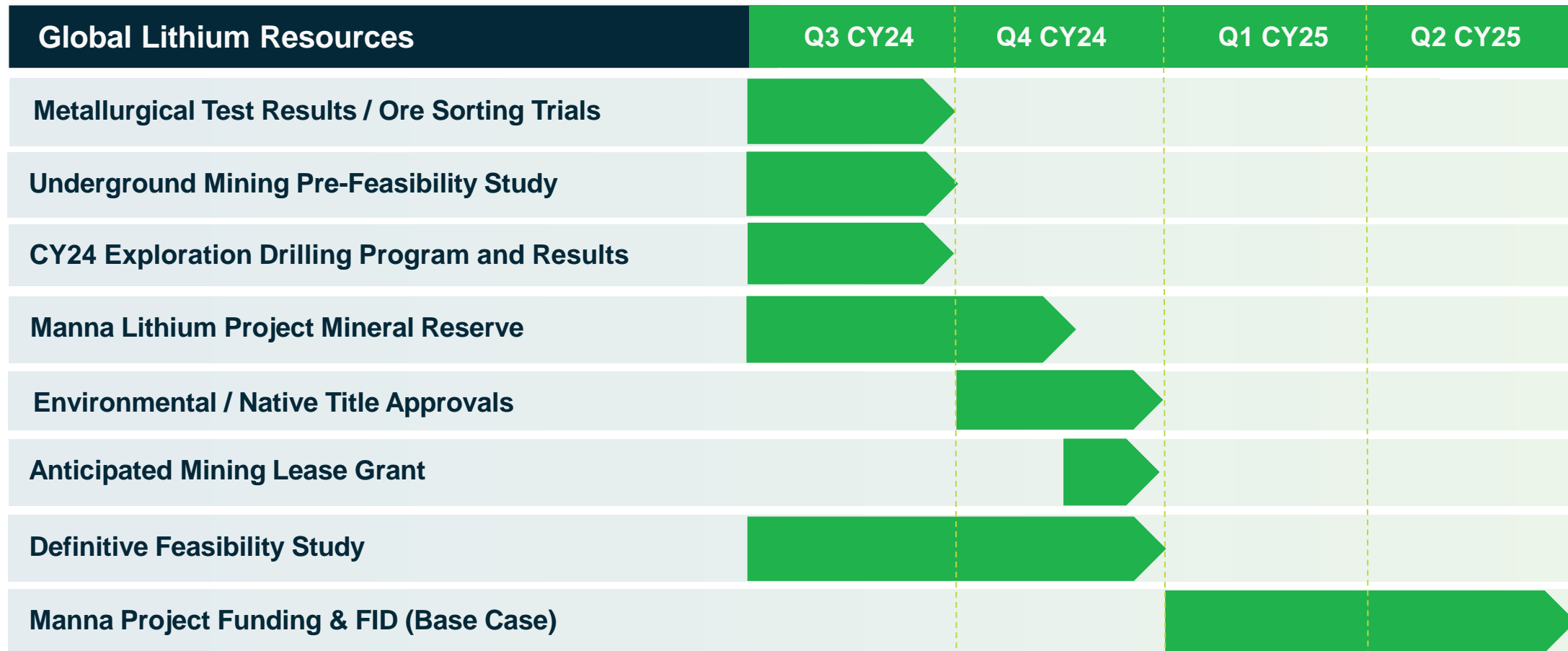
## GL1 has been actively participating and supporting activities with the local community

- Attended the Kakarra Part B Determination
- Provided football kits for the Kakarra team's participation in the 52nd Goldfields Aboriginal Football Carnival in Kalgoorlie
- Built strong relationships with the Traditional Owners of the Manna Project land to secure the Native Title Mining Agreement
- Hired the first indigenous contractor, Ellar, to complete the Manna rehabilitation work
- Ongoing Cultural Awareness Training for GL1 staff



# Upcoming Milestones - De-risked and Disciplined

Well positioned to capture significant upside with anticipated lithium market recovery





# Global Lithium – Mineral Resources

Project Name	Category	Million Tonnes (Mt)	Li <sub>2</sub> O%	Ta <sub>2</sub> O <sub>5</sub> ppm
<b>Marble Bar</b> <sup>2</sup>	Indicated	3.8	0.97	53
	Inferred	14.2	1.01	50
	<b>Subtotal</b>	<b>18.0</b>	<b>1.00</b>	<b>51</b>
<b>Manna</b> <sup>1</sup>	Indicated	32.9	1.04	52
	Inferred	18.7	0.92	50
	<b>Subtotal</b>	<b>51.6</b>	<b>1.00</b>	<b>52</b>
<b>Combined Total</b>		<b>69.6</b>	<b>1.00</b>	<b>52</b>

<sup>1</sup> Refer ASX release titled "43% INCREASE IN MANNA LITHIUM DEPOSIT MINERAL RESOURCE TO 51.6MT @ 1.0% LI2O", 12 June 2024

<sup>2</sup> Refer ASX release titled "GL1 Delivers Transformative 50.7 Mt Lithium Resources Base", 15 December 2022

# MARBLE BAR LITHIUM PROJECT

- 100% owned
- Tier 1 mining jurisdiction
- Inferred Mineral Resource of 18.0Mt @ 1.0% Li<sub>2</sub>O



# Highly Prospective Geological Setting

## Geology

- Spodumene bearing pegmatite hosted in greenstone and granite contact
- Similar geological settings to nearby Pilgangoora<sup>1</sup> and Wodgina<sup>2</sup> deposits

## Resource

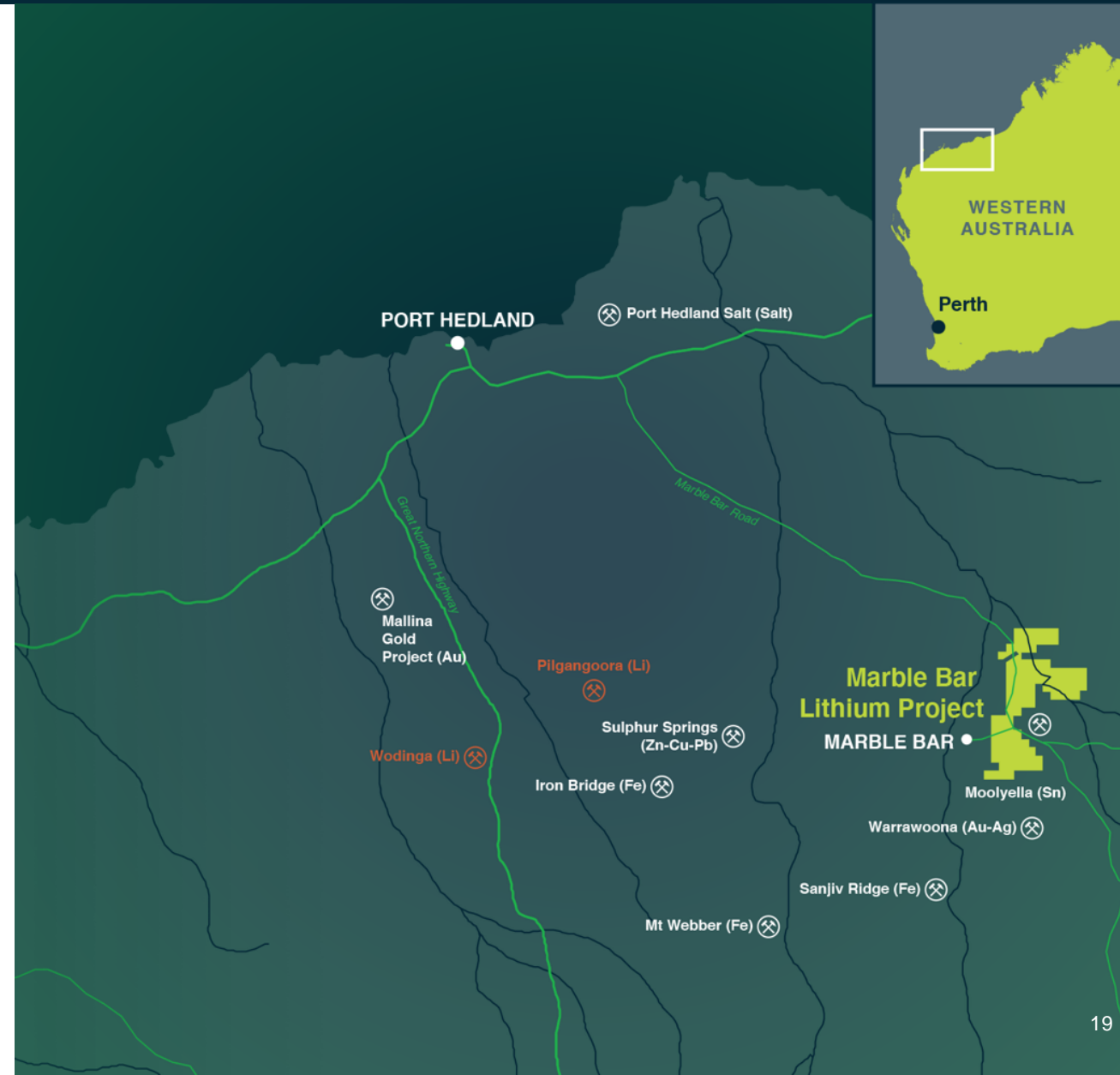
- Inferred Mineral Resource of 18.0Mt @ 1.0% Li<sub>2</sub>O<sup>3</sup>
- Lithium mineralisation in drilling identified over 15km

## Exploration Upside

- Highest grade lithium assays delivered to date<sup>4</sup>
- Highly prospective gold and base metal targets tested in 2023 – growth opportunities being investigated

## Infrastructure Rich

- Tier 1 lithium mining jurisdiction
- Sealed road through tenement area
- 150km south-east of Port Hedland



<sup>1</sup> Owned by Pilbara Minerals (ASX: PLS).

<sup>2</sup> Owned by the MARBL JV, 60% Albemarle, 40% Mineral Resources (ASX: MIN).

<sup>3</sup> Refer ASX release titled "GL1 Delivers Transformative Lithium Resource Base", 15 December 2022.

<sup>4</sup> Refer ASX release titled "Highest Grade Lithium Assays Delivered to Date at Marble Bar Lithium Project", 2 May 2022.

## Multi-asset development optionality

- Combined Mineral Resource of **69.6Mt @ 1.0% Li<sub>2</sub>O<sup>1</sup>**
- Two projects provide development optionality and funding alternatives
- **70% offtake** uncontracted

## JORC compliant resources

- **Wholly owned 2 JORC** compliant lithium resources in Australia
- Spodumene dominant hard rock lithium deposits
- Outstanding metallurgy +75% lithia recovery

## Tier 1 Jurisdiction

- Located in **world's best lithium mining jurisdiction of Western Australia**
- Close to existing lithium projects and **major infrastructure**

## Strategic partnerships and well-funded

- **Strategic partnerships** with blue-chip counterparties - Canmax and Mineral Resources (ASX:MIN)
- **Well-capitalised with strong balance sheet** to achieve key milestones towards FID on Manna

## Experienced team, strong lithium credentials

- **Experienced Board and management team** with deep background in mining, exploration and project development
- Executive Chair is **Chair of the LME Lithium and Cobalt Committee**

## Value accretive, de-risked and growth focused

- DFS well advanced
- All material approvals nearing conclusion
- Actively investigating M&A opportunities
- **Mining Lease on track for granting in CY24**



# Contact Us

---



## RON MITCHELL

Executive Chairman

+61 8 6103 7488

[info@globallithium.com.au](mailto:info@globallithium.com.au)

[in au.linkedin.com/company/global-lithium-resources](https://au.linkedin.com/company/global-lithium-resources)

[X @Global\\_Lithium](https://twitter.com/Global_Lithium)

## BEN CREAGH

Media and Investor Relations

+61 (0) 417 464 233

[benc@nwrcommunications.com.au](mailto:benc@nwrcommunications.com.au)

Subscribe to our mailing list at:  
[globallithium.com.au](http://globallithium.com.au)

**ASX: GL1**