

## BOARD & MANAGEMENT

Glenn Davis - Chair  
Michael Schwarz - MD  
Gary Ferris - NED  
Jarek Kopias - Co Sec

## CAPITAL STRUCTURE

Ordinary Shares  
Issued 147.7M

Options  
Issued 3.0M

Performance rights  
Issued 3.6M

## CONTACT

Address:  
Level 3, 170 Greenhill Rd  
PARKSIDE SA 5063

Email:  
[info@itechminerals.com.au](mailto:info@itechminerals.com.au)

Website:  
[www.itechminerals.com.au](http://www.itechminerals.com.au)

Telephone:  
+61 2 5850 0000



**Location:**  
Reynolds Range,  
Northern Territory

**Contact:**  
Michael Schwarz  
Managing Director  
E: [mschwarz@itechminerals.com.au](mailto:mschwarz@itechminerals.com.au)  
Ph: +61 2 5850 0000  
W: [www.itechminerals.com.au](http://www.itechminerals.com.au)



# ITECH MINERALS COMPLETES ACQUISITION OF THE REYNOLDS RANGE PROJECT, NT

## HIGHLIGHTS

- iTech Minerals (ASX: ITM) (iTech or Company) has completed the acquisition of the Reynolds Range Project, from Prodigy Gold NL (ASX: PRX) ("Prodigy Gold"), through iTech's wholly owned subsidiary iTech Energy Pty Ltd ("iTech"), as announced on 23 February 2024
- Two binding Tenement Sale and Purchase Agreements (SPA) are now complete, to acquire 100% of Prodigy Gold's interest in EL 23888, EL 28083 and EL23655
- The completion marks a significant step forward in iTech's copper, gold and lithium strategy
- The project captures prospective trends for gold, copper-gold-silver and lithium mineralisation over a strike of 60-70km

*"iTech is pleased to advise the completion of the two binding Tenement Sale and Purchase Agreements with Prodigy Gold. We have "hit the ground running" with two field trips already completed to the project area and the discovery of spodumene bearing pegmatites and confirmation of encouraging copper-gold and silver mineralisation at surface. iTech would like to thank Prodigy Gold for their helpful and supportive approach to the tenement sale and wish them all the best in their 100% gold projects in their Tanami North project area."*

**Managing Director - Mike Schwarz**

**Reynolds Range Project Background**

The Reynolds Range Project consists of three Exploration Licences, recently acquired by iTech Minerals Ltd. iTech has acquired 100% of Prodigy Gold’s interest in the project which includes 100% of two licences (EL 28083 and EL 23888) and 80% of another (EL 23655), the 20% of this license is owned by Select Resources Pty Ltd (Select) (Figure 1). The project covers a total of 375km<sup>2</sup> of the Aileron Province, part of the Paleoproterozoic North Australian Craton. The Project is located 90-230km NNW of Alice Springs with access available from the Stuart Highway and then the un-sealed Mt Denison road.

**Reynolds Range Project Acquisition**

On 23 February 2024, iTech announced the execution of two binding SPAs for the Reynolds Range Project in the Northern Territory. iTech is pleased to advise that the two binding Tenement SPAs with iTech Energy Pty Ltd (iTech Energy Pty Ltd is a wholly owned subsidiary of iTech Minerals Ltd (ASX: ITM)) to acquire 100% of Prodigy Gold’s interest in three tenements in the Reynolds Range area are now complete.

The first SPA covers EL23888 & EL28083 (SPA 1), and the second SPA covers EL23655 (SPA 2) with all conditions precedent now completed for both SPA’s.

Tenement	Prodigy Gold Ownership	Status	Notes	SPA
EL23888	100%	Granted		1
EL28083	100%	Granted		1
EL23655	80%	Granted	Joint Venture with Select Resources Pty Ltd / Prodigy Gold holds an 80% beneficial interest with 60% interest currently registered on title	2

**Key terms of the agreements are:**

Key term	SPA 1	SPA 2
Deposit – received in February 2024	\$20,000	NIL
Completion Payment – received in August 2024	\$40,000	\$40,000
Reimbursement of agreed holding costs for the period 1.2.2024 to Completion ~\$20,000	Received August 2024	Received August 2024
Royalty on any mineral or metallic product recovered from the Mining area (other than graphite)	1%	1%

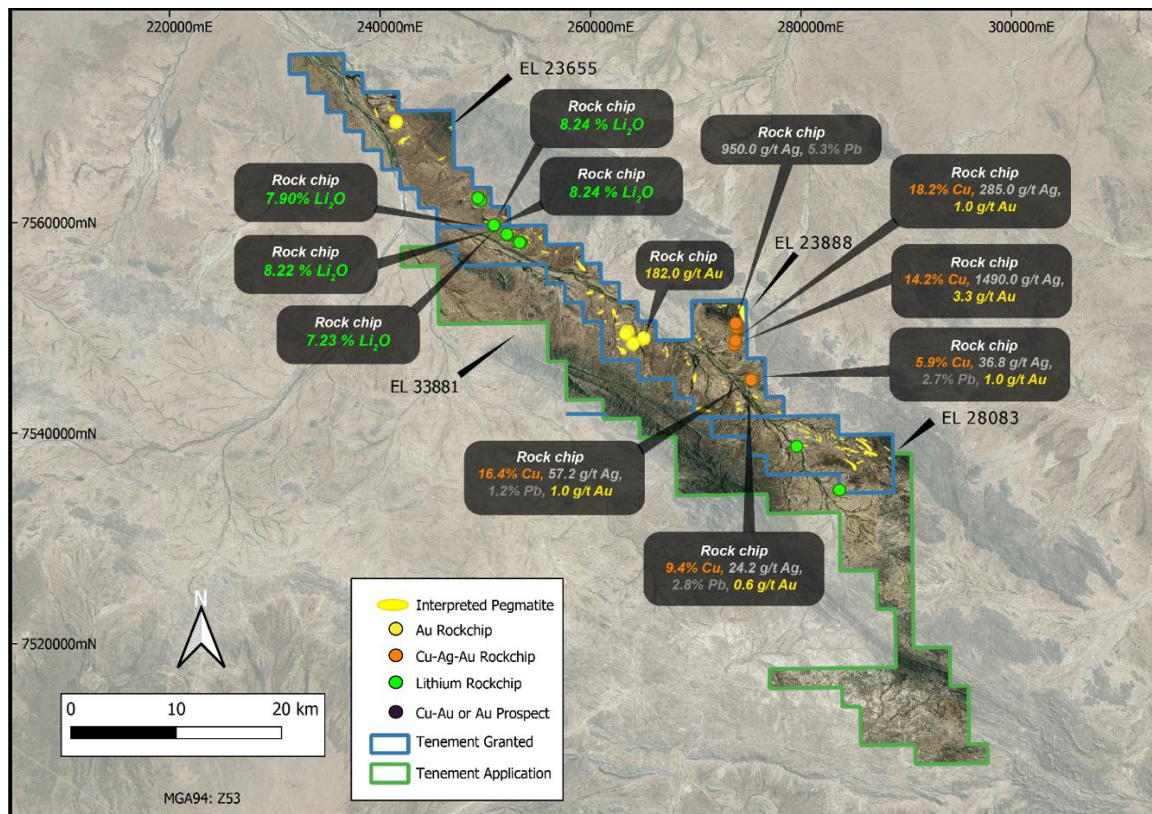


Figure 1. Location diagram of EL 23655, EL 23888 and EL 28083 and application EL 33881 with location of rock chip samples taken.

For further information please contact the authorising officer Michael Schwarz:

**iTech Minerals**

Michael Schwarz, FAusIMM, AIG  
 Managing Director  
 E: [mschwarz@itechminerals.com.au](mailto:mschwarz@itechminerals.com.au)  
 Ph: +61 2 5850 0000  
 W: [www.itechminerals.com.au](http://www.itechminerals.com.au)

**ABOUT ITECH MINERALS LTD**

iTech Minerals Ltd (**ASX:ITM, iTech or Company**) is an ASX listed mineral exploration company exploring for and developing battery materials and critical minerals within its 100% owned Australian projects. The Company is exploring for graphite, kaolinite-halloysite, clay hosted rare earth element (REE) mineralisation and developing the Campoona Graphite Deposit in South Australia. The Company also has extensive exploration tenure prospective for Cu-Au porphyry mineralisation, IOCG mineralisation and gold mineralisation in South Australia and the Northern Territory and tin, tungsten, and polymetallic Cobar style mineralisation in New South Wales.

**ASX Announcement References<sup>1</sup>**

7 June 2024	Sampling Confirms Potential at Reynolds Range
5 July 2024	182 g/t Au in Rock Chips from Reynolds Range
23 July 2024	18.2% Cu and 1,490 g/t Ag Rock Chips at Reynolds Range
24 July 2024	Lithium Pegmatites Discovered at Reynolds Range

<sup>1</sup> iTech confirms that the Company is not aware of any new information or data that materially affects the results reported in this announcement.