

ASX Announcement

8th August 2024

Technical Integration of Relu Dental AI Model

HIGHLIGHTS

- Completion of technical integration of 3rd party licensable dental AI model with pay-per-use functionality, advanced visualisation, and ability to export for 3D printing.
- Commencement of public Application Programming Interface (Public API) to allow for standardised integration of multiple 3rd party AI models into 3Dicom product suite.
- End-to-end dental AI segmentation workflow currently being demonstrated to numerous prospective enterprise clients and commercial license for AI model being negotiated.

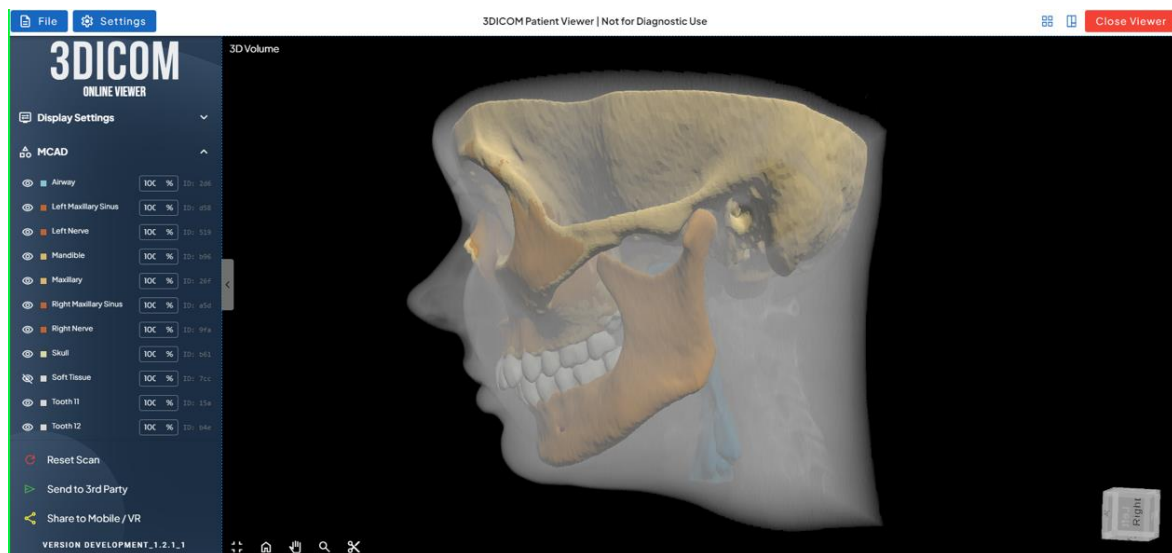


Figure 1: Relu Dental AI Model successfully integrated into 3Dicom Online Viewer

8 August 2024 – Singular Health Group Limited (ASX: SHG, “Singular Health”, or the “Company”) has achieved a significant development milestone with the successful technical integration of its inaugural 3rd party artificial intelligence (AI) model for segmentation.

Collaborating with Relu BV, an artificial intelligence company focused on the dental market, Singular Health has integrated Relu’s dental AI model into the 3Dicom ecosystem via an Application Programming Interface (API) allowing for AI-driven segmentation in the cloud and subsequent visualisation and manipulation via the 3Dicom R&D software on desktop, web, and within the 3Dicom XR software.

The resulting segments can be overlaid onto the patient’s medical images for use in patient and medical education, exported to 3rd party software for pre-operative planning, and/or be 3D printed as patient-specific anatomical models.

Commencement of Public API for 3rd Party Integrations

The technical integration of the Relu BV dental AI model represents the very first third-party integration via an Application Programming Interface (API). The use of an API allows for licensable AI models and analysis programs to be more easily integrated into the 3Dicom Viewer marking a large step forward towards an online AI marketplace with a single, unified viewer.

Singular Health's development team have utilised the learnings from the Relu model integration to commence the development of a Public API, which will provide AI model developers with documentation and licensed access to the 3Dicom Viewer ecosystem.

The Company anticipates commercialising 3rd party AI algorithms, including the Relu dental model, according to a pay-per-use (PPU) model, that charges customers based on effective usage.

Strong Commercial Prospects for Dental Applications

Prior to a commercial launch of the integrated Relu dental model, there exist several remaining development tasks, which are being worked through with potential customers to tailor the final workflow to meet desired specifications.

However, this technical integration has allowed for multiple demonstrations to be booked with numerous commercial prospects in Australia, Europe, and the USA ranging from educational institutions to patient-specific orthognathic surgical companies and large dental organisations.

Singular Health looks forward to providing shareholders with further details in the coming weeks and months as and when a commercial agreement is reached. Commercial opportunities will be available to dental clinics and practices, hospitals and medical centres, dental laboratories, insurance companies, dental and medical schools, research institutions, and Public Health Agencies.

Relu's Chief Operating Officer, Antoine Coppens, said:

"Relu is pleased to integrate the Relu® Engine with the 3Dicom software, providing greater access to our cutting-edge dental AI software."

"Integrations such as these are pivotal to achieving our aim to improve oral health across the globe through AI by giving better insight to dentists and their patients and we are excited to further progress towards a commercial licensing agreement."

Singular Health's COO / CTO, James Hill, said:

"We have been following Relu's progress over the past few years as they've developed and refined their dental AI model and are excited to have integrated their AI model into our online workflows and the broader 3Dicom ecosystem."

"This technical integration provides a solid foundation for the licensing of additional third-party applications and integration to further progress Singular Health toward a pay-per-use AI marketplace and unified DICOM viewer with visualisation, editing, and manipulation of the outputs of medical AI models."

This announcement is authorised for release by the Board of Directors of the Company.

Ends

For further information contact

Investors	Corporate
James Hill +61 413 825 646 jhill@singular.health	Steven Wood Company Secretary support@singular.health

About Singular Health:

Singular Health Group Limited (ASX: SHG) is a medical technology company utilising advanced technologies to develop patient-specific solutions.

Singular Health's 3Dicom software solutions empower patients and practitioners to better visualise, communicate, and understand medical imaging data. 3Dicom MD® is cleared for diagnostic use in the United States.

Singular 3DP, a wholly owned subsidiary of Singular Health, uses advanced manufacturing including 3D printing and post-processing to manufacture TGA-approved patient-specific medical devices.

To learn more, visit: <https://www.singular.health> and <https://investors.singular.health/>

About Relu AI:

Founded in 2019 by a group of four Belgian engineering students with a passion for computer vision, Relu BV is a dental AI model development company with an aim to improve oral health globally through AI by giving better insight to dentists and their patients.

Relu BV have created a licensable AI model and associated systems called the Relu® Engine, licensed to dental software companies across the globe to automate many of the manual tasks that dentists and dental technicians do on a daily basis.

To learn more, visit: <https://www.Relu.eu>