

## Major Soil Sampling Program Commenced at Portland Creek Uranium Project

Large soil survey has commenced with field crews now mobilised back to site to follow up stunning maiden surface geochemical results reported in July

### Highlights

**Major follow up soil survey has commenced with ~1300 sampling sites** designed to define pre-existing exceptional uranium soil results up to **74,997ppm (7.5%)  $U_3O_8$**  and **potentially discover multiple new anomalies** that are coincident with high historical radon gas readings

**Numerous radon gas anomalies to be geochemically sampled** with design of the large phase two program extending through highly anomalous  $>100$  T/mm<sup>2</sup> areas

**All field samples to be submitted via expedited analysis** to fast-track diamond drill plans

**UAV magnetic survey to be extended to the South-West to better define the sediment-granite contact and potential structures underlying existing radon gas anomalies**

**Infini Resources Ltd** (ASX: **I88**, “Infini” or the “Company”) is pleased to announce the recommencement of major surface geochemical sampling at its 100% owned Portland Creek Uranium Project. The Project is located in the uranium-friendly jurisdiction of Newfoundland, Canada (Figure 1).

**Infini’s Managing Director, Charles Armstrong said:**

*“The scale of this final geochemical sampling program prior to maiden drilling is substantial and covers a massive area within this highly prospective uranium bearing structural corridor.*

*The multi-element geochemical data that we extract from this program will be very useful as it will allow us to more effectively vector in on a potential undiscovered uranium deposit at Portland Creek. The comprehensive and broad scale program will further enhance our understanding of the project prior to executing diamond drilling. Future geochemical results will pave the way for the Company to test multiple high quality exploration targets and ensure that all existing conceptual models are given the attention they deserve.*

*We are thrilled to be back on the ground to complete this much larger geochemical sampling program and I look forward to personally visiting site very soon to see the fantastic work that has recommenced.”*

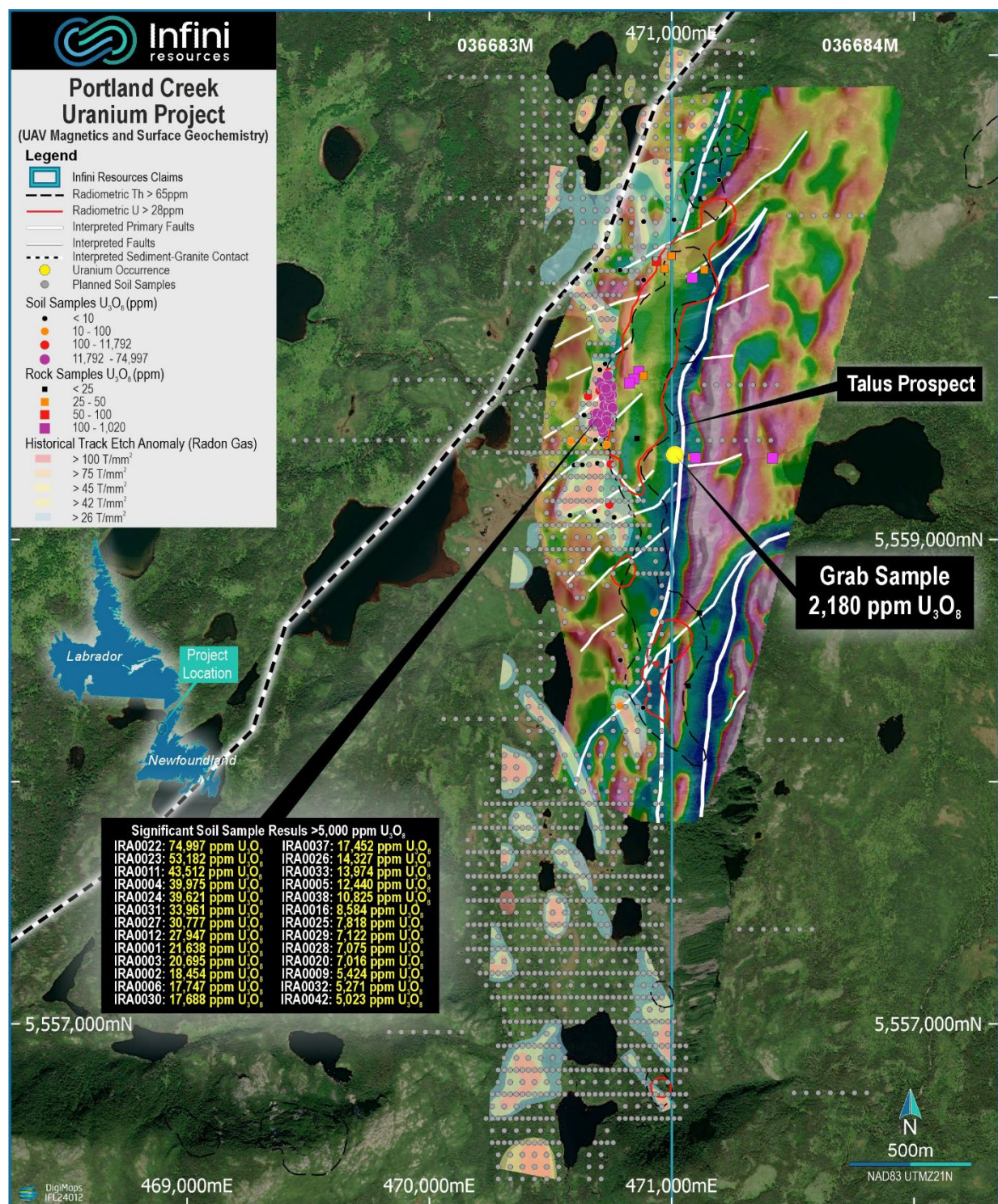


Figure 1 Plan view of the large soil survey that has commenced on site. NB: The presence of numerous radon gas anomalies being sampled in this program and the interpreted sediment-granite contact in close proximity to the high-grade soil anomaly.



## Major Soil Sampling Program

The final phase geochemical sampling program will comprise soils, given the highly encouraging results that were reported in July (see 1st and 10th July ASX announcements). The grid has been designed on a ~50m x 25m pattern with the option to infill at tighter East-West line spacings where appropriate. It covers historical radon gas anomalies and infills/extends upon geochemical anomalies (**peak result of 74,997ppm U<sub>3</sub>O<sub>8</sub>**) that were identified in the maiden sampling program. Biogeochemical sampling may be conducted at sample sites where soil sampling is not possible due to ground conditions.

Several lines in the east and west have been extended to provide information on background multi-element geochemistry and Pb-isotope ratios. This will assist the Company with potential area reduction/expansion and vectoring prior to maiden diamond drilling.

## About Portland Creek Uranium Project

The Portland Creek Project covers an area of 149 km<sup>2</sup> and is situated in the Precambrian Long-Range Complex of the Humber Tectonic – Stratigraphic zone. These members include metaquartzite and a suite of paragneisses, intruded by leucocratic pink granite, which have likely been thrust westwards over Palaeozoic carbonate-dominant sediments. The Claims are situated over a large regional uranium anomaly that was identified in the 1970's by a Newfoundland government stream sediment sampling program. There is one uranium showing on the property as listed in the Newfoundland Mineral Deposit Index inventory with 2,180 ppm U<sub>3</sub>O<sub>8</sub> (refer Prospectus dated 30 November 2023).

[END]

Release authorised by the Board of Infini Resources Ltd.

---

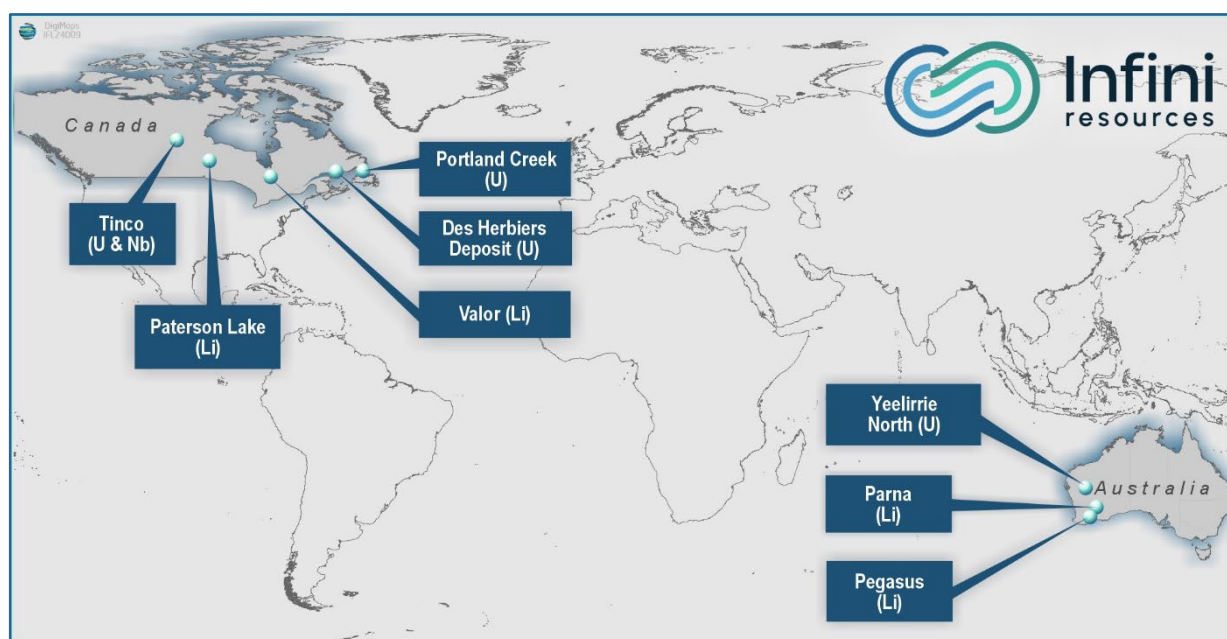
## Contacts

Charles Armstrong  
Managing Director and CEO  
P: +61 (08) 9465 1051

## About Infini Resources Ltd (ASX: I88)

Infini Resources Ltd is an Australian energy metals company focused on mineral exploration in Canada and Western Australia for uranium and lithium. The company has a diversified and highly prospective portfolio of assets that includes greenfields and more advanced brownfields projects. The company's mission is to increase shareholder wealth through exploration growth and mine development.

JOR 2012 Mineral Resource Deposit	JORC 2012 Classification	Tonnes and Grade
Des Herbiers (U)	Inferred Combined Resource	162 Mt @ 123ppm U <sub>3</sub> O <sub>8</sub> (43.95mlb)



### Compliance Statement

This report contains information on the Company's Projects extracted from the Company's Prospectus dated 30 November 2023 and released to the ASX market announcements platform on 10 January 2024, and announcements dated 15 January 2024, 29 January 2024, 19 February 2024, 29 February 2024 3 May 2024, 28 May 2024, 3 June 2024, 13 June 2024, 1 July 2024 and 10 July 2024 reported in accordance with the 2012 edition of the "Australian Code for Reporting of Exploration Results, Mineral Resources and Ore Reserves" (JORC Code). The original market announcements are available to view on [www.infiniresources.com.au](http://www.infiniresources.com.au) and [www.asx.com.au](http://www.asx.com.au). The Company is not aware of any new information or data that materially affects the information included in the original market announcement.

This report contains information regarding the Des Herbiere Mineral Resources Estimate extracted from the Company's Prospectus dated 30 November 2023 and released to the ASX market announcements platform on 10 January 2024, reported in accordance with the 2012 edition of the "Australian Code for Reporting of Exploration Results, Mineral Resources and Ore Reserves" (JORC Code). The Company confirms that it is not aware of any new information or data that materially affects the information included in any original announcement and that all material assumptions and technical parameters underpinning the estimates in the original market announcement continue to apply and have not materially changed. The original market announcements are available to view on [www.infiniresources.com.au](http://www.infiniresources.com.au) and [www.asx.com.au](http://www.asx.com.au).

### Forward Looking Statements

This announcement may contain certain forward-looking statements and projections. Such forward looking statements/projections are estimates for discussion purposes only and should not be relied upon. Forward looking statements/projections are inherently uncertain and may therefore differ materially from results ultimately achieved. Infiniti Resources Limited does not make any representations and provides no warranties concerning the accuracy of the projections and disclaims any obligation to update or revise any forward-looking statements/projects based on new information, future events or otherwise except to the extent required by applicable laws. While the information contained in this report has been prepared in good faith, neither Infiniti Resources Limited or any of its directors, officers, agents, employees or advisors give any representation or warranty, express or implied, as to the fairness, accuracy, completeness or correctness of the information, opinions and conclusions contained in this announcement.