

Gold Exploration Commences at Flicka Lake

HIGHLIGHTS

- RMX commences Gold exploration sampling in high priority zones at Flicka Lake.
- The sampling program is expected to take approximately four weeks to complete.
- Red Mountain expects assay results to be received in October.

Red Mountain Mining Limited (“RMX” or the “Company”) is pleased to advise that its geological consultancy team has commenced exploration in high priority zones at its gold prospective ground at Flicka Lake, part of the Fry Lake Gold Project in Canada. Fladgate Exploration Consulting mobilised on the 28th of August flying its crew and equipment into the project area and will seek to rapidly complete the initial sampling work.

The program covers 10 target zones (Figure 1) based on structural data, geophysical data and historical sampling results with approximately 400 spot sites planned for sampling. Rock chip sampling and soil sampling is planned, and the actual number of samples will be dictated by ground conditions with rock chip sampling taking precedence. The program is expected to take 3 to 4 weeks to complete, and all samples will be lodged with the local analytical laboratory (AGAT Laboratories) for analysis which includes gold by Flame Assay and base metal suite by four acid digest with ICP-OES finish. The expected laboratory turnaround is two weeks, with results expected in mid-October.

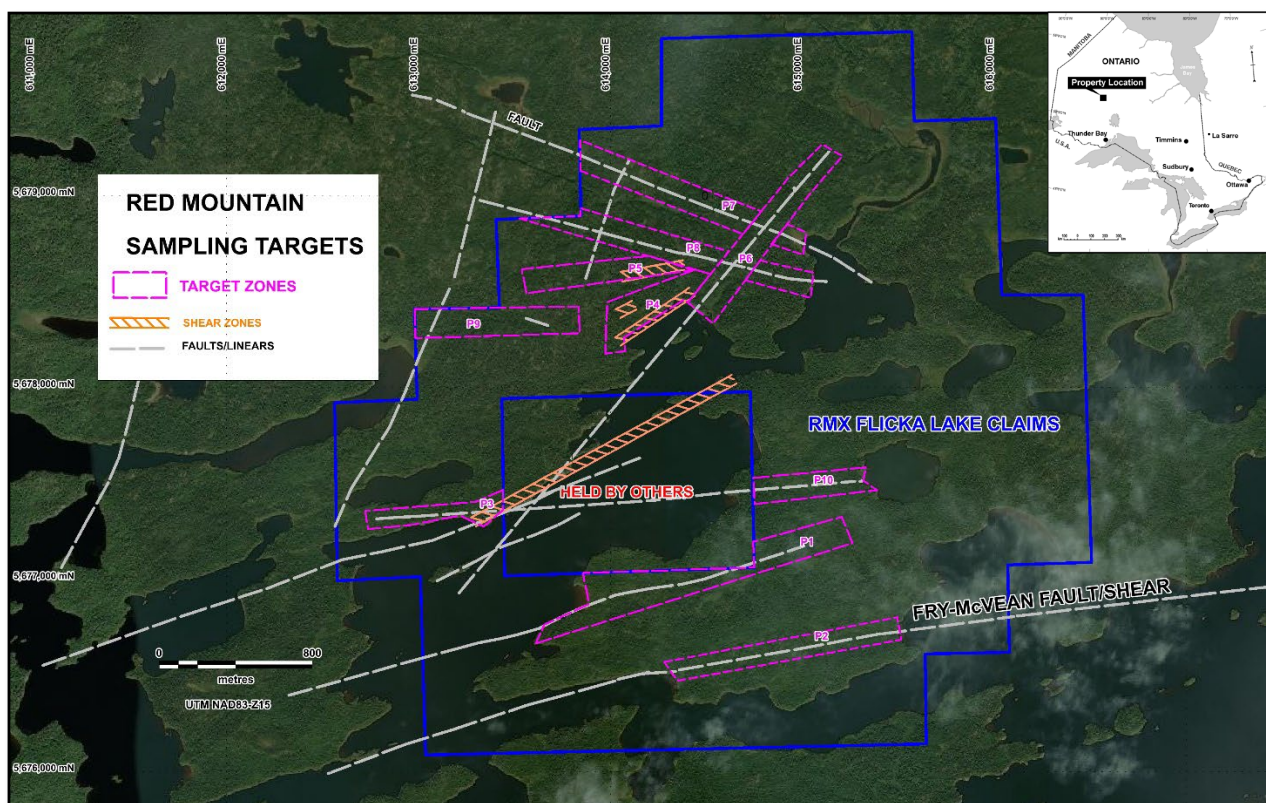


Figure 1: Revised sampling targets based on geological, structural, geophysical and historical sampling data.

The Flicka Lake claims lie within the Meen-Dempster Greenstone Belt and is one of four recently acquired claim packages (Figure 2) considered prospective for gold. The four 100% RMX owned properties, named **Flicka Lake, Fry Lake Stock, Fry-McVean Shear and Relyea Porphyry** or “Fry Lake Projects”, hold potential to host gold lode mineralisation based on targeting and the known deposits in the broader area.

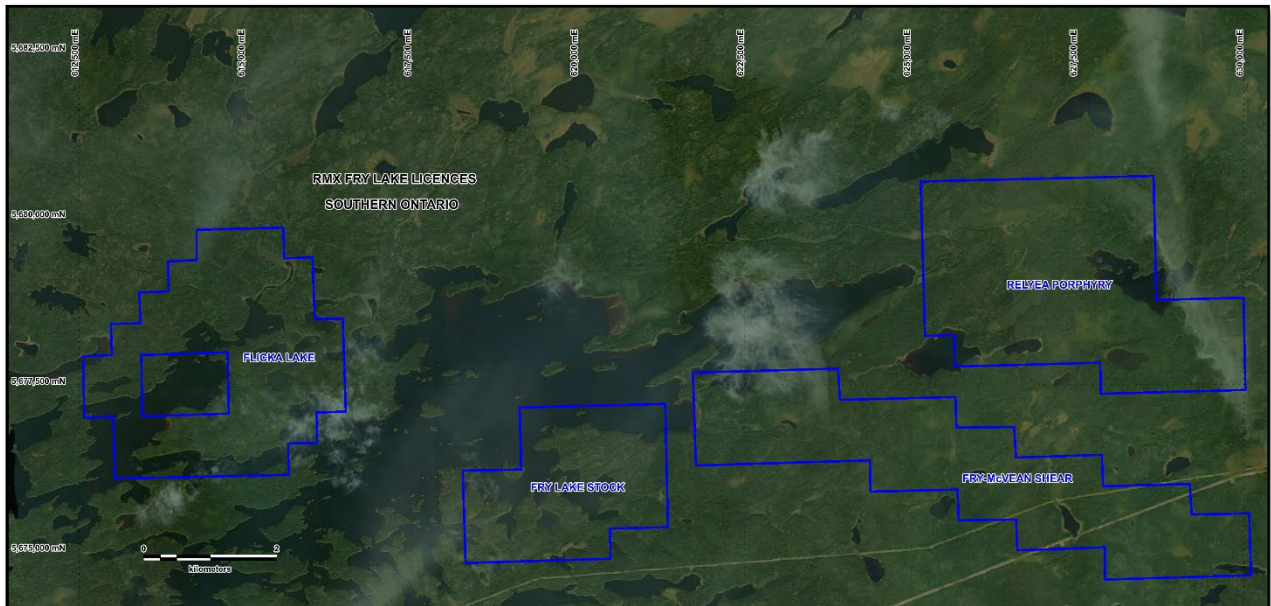


Figure 2: The four claim areas the make up the Fry Lake Project with Flicka Lake in the West. Datum UTM NAD83 zone 15.

Authorised for and on behalf of the Board,

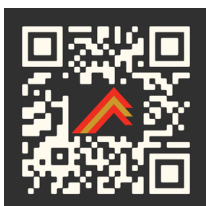


Mauro Piccini

Company Secretary

About Red Mountain Mining

Red Mountain Mining Limited (ASX: RMX) is a mineral exploration and development company. Red Mountain has a portfolio of critical minerals including gold, lithium, rare earth and base metal projects, located in Canada, Australia and USA. Red Mountain is progressing its Fry Lake project, based in the strategic Gold district in Ontario, Canada and the Kiabye Gold Project in Western Australia. In addition, Red Mountain’s project portfolio includes the Monjebup Rare Earths Project, and Nevada Lithium Projects.



JOIN THE RED MOUNTAIN MINING INVESTOR HUB

Visit <https://investorhub.redmountainmining.com.au> for access to the Investor Hub