

26 September 2024

## ABORIGINAL HERITAGE SURVEYS COMPLETED AT MANNA LITHIUM PROJECT

### Key Highlights

- All required Aboriginal Heritage Surveys have been completed for the Manna Lithium Project.
- Majority of remaining land access agreements are now executed allowing the granting of various miscellaneous licenses for key project infrastructure.
- The achievement of these key milestones further de-risk the future development of the Manna Lithium Project.

Global Lithium Resources Limited (**ASX: GL1, Global Lithium or the Company**) is pleased to announce that it has successfully completed all required Aboriginal Heritage Surveys and clearances for the future development of the Manna Lithium Project (**Manna or the Project**).

Multiple Heritage Surveys have been completed with the Kakarra Part B People, the determined Native Title Holders of the Project, following the execution of a Land Access Agreement in July 2023. The achievement of these milestones is another important step towards completing the various approvals required ahead of finalising a Definitive Feasibility Study (DFS) and prior to a Final Investment Decision (FID).

Aboriginal Heritage sites identified through the Surveys are confirmed to be outside the Project's planned footprint and can be avoided without impacting the Project's development cost and/or requiring any Ministerial Consent.

Discussions with the Kakarra Part B People to finalise a Native Title Mining Agreement are ongoing. Conclusion of this agreement will allow for the granting of a Mining Lease over the Project as a further key development milestone.

### Global Lithium Executive Chair, Ron Mitchell, commented:

*"It has been a great pleasure building positive relationships with Kakarra Part B Elders and People as we complete Heritage Surveys and continue to work together towards a Native Title Mining Agreement."*

*In addition the recent execution of the majority of the remaining land access agreements allows the granting of various miscellaneous licenses for key Project infrastructure including the mine village, aerodrome, solar farm and access corridors.*

*The completion of all Aboriginal Heritage surveys and several land access agreements marks a key milestone as we continue to cost-effectively and responsibly de-risk the Project and ensure its readiness for development in the future.”*

The majority of any remaining third-party objections to GL1 mining tenure applications have now been resolved through the execution of access agreements, with any further outstanding objections expected to be resolved in the near future.

Resolution of all objections will allow for the granting of all required Miscellaneous Licences for key Project infrastructure. Environmental approval applications have been prepared and will be lodged with the relevant regulatory bodies upon grant of all required project tenure.



*Figure 1. Kakarra Part B Elders and People at the completion of Aboriginal Heritage surveys for the Manna Lithium Project.*



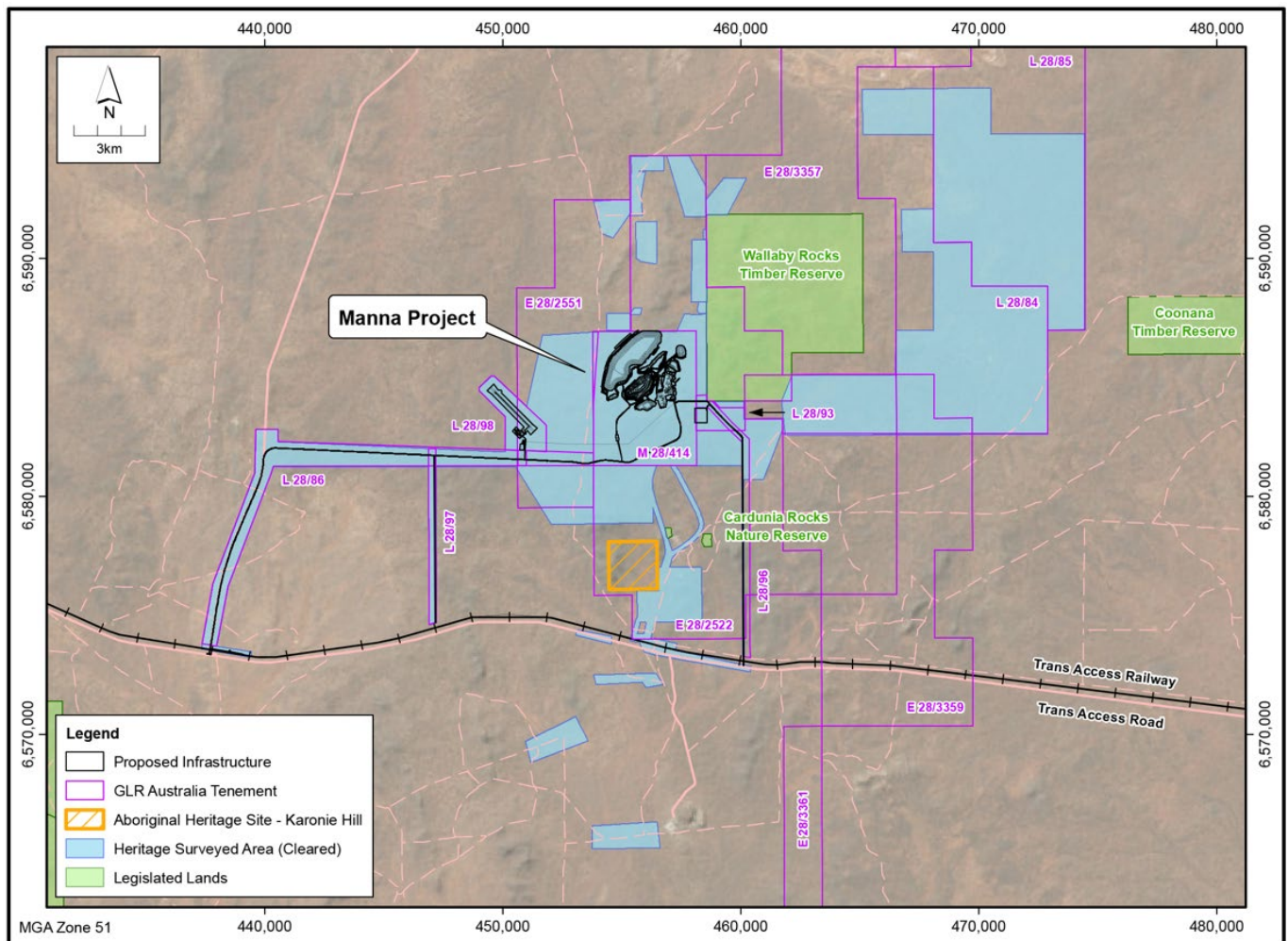


Figure 2. Aboriginal Heritage surveyed areas for the Manna Lithium Project.

Approved for release by the Board of Global Lithium Resources Limited.

For more information:

**Ron Mitchell**  
*Executive Chair*  
[info@globallithium.com.au](mailto:info@globallithium.com.au)  
+61 8 6103 7488

**John Gardner**  
*Media & Investor Relations*  
[jgardner@vectoradvisors.au](mailto:jgardner@vectoradvisors.au)  
+61 (0) 413 355 977

## About Global Lithium

Global Lithium Resources Limited (ASX:GL1, Global Lithium) is a diversified West Australian lithium exploration and development company with multiple assets in key lithium branded jurisdictions with a primary focus on the 100% owned Manna Lithium Project in the Goldfields and the Marble Bar Lithium Project (MBLP) in the Pilbara region, Western Australia.

Global Lithium has defined a total Indicated and Inferred Mineral Resource of 69.6Mt @ 1.0% Li<sub>2</sub>O at its Manna and MBLP Lithium projects.

## Directors

Ron Mitchell	Executive Chairman
Dr Dianmin Chen	Non-Executive Director
Greg Lilleyman	Non-Executive Director
Hayley Lawrance	Non-Executive Director
Matt Allen	Executive Finance Director

## Global Lithium – Mineral Resources

Project Name	Category	Million Tonnes (Mt)	Li <sub>2</sub> O%	Ta <sub>2</sub> O <sub>5</sub> ppm
Marble Bar	<i>Indicated</i>	3.8	0.97	53
	<i>Inferred</i>	14.2	1.01	50
	<b>Total</b>	<b>18.0</b>	<b>1.00</b>	<b>51</b>
Manna	<i>Indicated</i>	32.9	1.04	52
	<i>Inferred</i>	18.7	0.92	50
	<b>Total</b>	<b>51.6</b>	<b>1.00</b>	<b>52</b>
<b>Combined Total</b>		<b>69.6</b>	<b>1.00</b>	<b>52</b>

## Competent Persons Statement:

### Mineral Resources

Information on historical exploration results and Mineral Resources for the Manna Lithium Project presented in this announcement, together with JORC Table 1 information, is contained in an ASX announcement released on 12 June 2024.

Information on historical exploration results and Mineral Resources for the Marble Bar Lithium Project presented in this announcement is contained in an ASX announcement released on 15 December 2022

The Company confirms that it is not aware of any new information or data that materially affects the information in the relevant market announcements, and that the form and context in which the Competent Persons findings are presented have not been materially modified from the original announcements.

*Where the Company refers to Mineral Resources for the Manna Lithium Project (MLP) and the Marble Bar Lithium Project in this announcement (referencing previous releases made to the ASX), it confirms that it is not aware of any new information or data that materially affects the information included in that announcement and all material assumptions and technical parameters underpinning the Mineral Resource estimate in that announcement continue to apply and have not materially changed. The Company confirms that the form and context in which the Competent Persons findings are presented have not materially changed from the original announcement.*