



MINERAL HILL LIFE OF MINE UPDATE

GOLD AND COPPER PRODUCER

SEPTEMBER 2024

Important notices and disclaimer

Forward Looking Statements

Certain statements contained in this presentation, including information as to the future financial or operating performance of KSN and its projects, are forward looking statements. Such forward looking statements: include, among other things, statements regarding incomplete and uncertain proposals or targets, production and prices, operating costs and results, capital expenditures, and are or may be based on assumptions and estimates related to future technical, economic, market, political, social and other conditions; are necessarily based upon a number of estimates and assumptions that, while considered reasonable by KSN, are inherently subject to significant technical, business, economic, competitive, political and social uncertainties and contingencies; and involve known and unknown risks and uncertainties that could cause actual events or results to differ materially from estimated or anticipated events or results reflected in such forward looking statements.

KSN disclaims any intent or obligation to update publicly any forward-looking statements, whether as a result of new information, future events or results or otherwise. The words “believe”, “expect”, “anticipate”, “indicate”, “contemplate”, “target”, “scope”, “plan”, “intends”, “continue”, “budget”, “estimate”, “may”, “will”, “schedule” and similar expressions identify forward looking statements. All forward looking statements made in this presentation are qualified by the foregoing cautionary statements. Recipients are cautioned that forward looking statements are not guarantees of future performance and accordingly investors are cautioned not to put undue reliance on forward looking statements due to the inherent uncertainty therein.

Disclaimer

No representation or warranty, express or implied, is made as to the fairness, accuracy, completeness or correctness of the information, opinions and conclusions contained in this presentation. To the maximum extent permitted by law, none of KSN, its directors, employees or agents, nor any other person accepts any liability, including, without limitation, any liability arising out of fault of negligence, for any loss arising from the use of the information contained in this presentation. In particular, no representation or warranty, express or implied is given as to the accuracy, completeness or correctness, likelihood of achievement or reasonableness or any forecasts, prospects or returns contained in this presentation nor is any obligation assumed to update such information. Such forecasts, prospects or returns are by their nature subject to significant uncertainties and contingencies.

The information contained in this presentation is for informational purposes only and does not constitute an offer to issue, or arrange to issue, securities or other financial products. The information contained in this presentation is not investment or financial product advice and is not intended to be used as the basis for making an investment decision. The presentation has been prepared without taking into account the investment objectives, financial situation or particular needs of any particular person. Before making an investment decision, you should consider, with or without the assistance of a financial adviser, whether an investment is appropriate in light of your particular investment needs, objectives and financial circumstances. Past performance is no guarantee of future performance.

For further information on the Life of Mine at Mineral Hill referred to in this Presentation, refer to the Company's ASX Announcement dated 27 June 2023 and 30 September 2024.

Mineral Hill Gold Bar



Important notices and disclaimer

Exploration by Other Explorers

This presentation contains information sourced from the reports of other Explorers. References to the original reports are provided as footnotes where the information is cited in this presentation. KSN does not vouch for the accuracy of these reports. KSN has taken the decision to include this information as it is in the public domain and as we assess it to be of relevance to shareholders and investors.

Production Target

The LOM plan includes Mineral Resource Estimates for Pearse pits, the Southern Ore Zone (SOZ) and Jack's Hut to estimate the Production Target. All Ore Reserves and Mineral Resources underpinning this LOM plan have been prepared by Competent Persons in accordance with the 2012 JORC reporting guidelines. The Production Target comprises 51% Ore Reserves, 11% Measured & Indicated Resources and 38% Inferred Resources. The first 12 and 36 months of the Production Target are underpinned by 89% and 80% of Measured and Indicated Resources respectively

There is a low level of confidence associated with Inferred Mineral Resources and there is no certainty that further exploration work will result in the determination of Indicated Mineral Resources or that the production target itself will be realised.

The stated production target is based on the Company's current expectations of future results or events and should not be solely relied upon by investors when making investment decisions. Further evaluation work and appropriate studies are required to establish sufficient confidence that this target will be met. The Company notes that the Project forecasts a positive financial performance and is therefore satisfied that the use of Inferred resources in production target reporting and forecast financial information is not the determining factor in overall Project viability and that it is reasonable to report the LOM plan with Inferred Resources.

The Company has concluded that it has a reasonable basis for providing the forward-looking statements included in this announcement. The detailed reasons for that conclusion are outlined throughout this presentation.



Kingston Resources: Investment highlights



Extended Mine Life to 2030+: Maiden underground Ore Reserve extends life of mine beyond six years, boosting payable metal^{1,2}.



Mineral Hill Processing Plant: Operating at Full Capacity, weekly gold/silver dore sales. With copper production from underground in FY26



Expansion: Exploring new deposits, expanding mine plan through exploration and acquisition.



Strategic Advantage: Growth options in Cobar Basin, high-value Misima Gold Project.



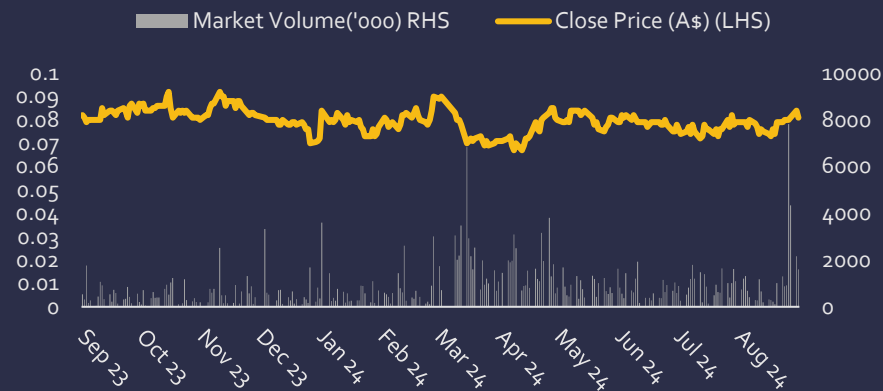
1. See ASX Announcement dated 2 April 2024, 27 June 2023 & 30 Sept 2024, for further detail and key assumptions
2. See KSN ASX announcements on 6 June 2022 for further detail

Corporate snapshot

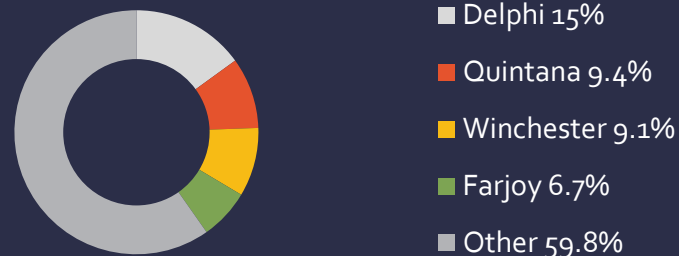
Shares on issue	707m
Warrants & options ^{2,3}	98.7m
Share price @ 29 September 2024	\$0.086
Market cap @ 29 September 2024	\$61m
Cash @ 30 June 2024 ¹	\$8.36m
Restricted cash for environmental bond	\$7.4m
Debt ⁴	\$15m



1-Year Share Price Performance



Shareholder Structure



1. Estimated Cash balance, as at 30 June 2024, excludes \$7.4m cash backed environmental bond.
2. 38m unlisted options @ \$0.14, exp 31 July 25.
3. 25m unlisted warrants @ \$0.20, exp 07 July 2027, 35.7m unlisted warrants @ \$0.14 exp 29 June 2028. Exercise price of the warrants to be repriced to \$0.0847 subsequent to shareholder approval at the next meeting of shareholders.
4. Debt payback - \$5m matures 7 July 2026, \$5m matures 29 June 2027, \$5m matures 23 February 2027.



Mineral Hill

Extended Life of Mine Plan

Kingston extends Mineral Hill Mine life out to 2030

Six-year mine life extension with updated Ore Reserves ^{1,2}

Pearse North open pit mining operations

- **Extended Mine Life:** Life of mine now six years, extended to +2030.
- **Increased Ore Reserves:** Increase open pit Reserves, plus maiden underground Ore Reserves.
- **Enhanced Financial Certainty:** Higher gold price and detailed engineering and metallurgical studies.
- **Balanced Production Strategy:** Combination of open pit and underground mining.



1. See ASX Announcement dated 2 April 2024, 27 June 2023 & 30 Sept 2024, for further detail and key assumptions

2. See KSN ASX announcements on 6 June 2022 for further detail

Updated Open Pit Ore Reserve – higher gold price

Pearse North changes have added 39% more gold¹

- Updated Open Pit Ore Reserve based on:
 - Revised Mineral Resource estimate for Pearse North.
 - Gold price increased from A\$2,571/oz to A\$2,859/oz.
 - Pearse North metallurgy based on new test work.
- Additional 110kt of ore. Gold increased 39% to 43koz.

Reserve*	Tonnes mt	Grade Au g/t	Grade Ag g/t	Metal Au koz	Metal Ag koz
Pearse North	0.24	3.2	33	24	250
Pearse South	0.13	4.3	85	19	370
Total Open Pits	0.37	3.6	52	43	620



* Due to rounding to appropriate significant figures, minor discrepancies may occur, tonnages are dry metric tonnes.

1. See ASX Announcement dated 30 September 2024

Pearse North and South pit designs

Maiden Underground Ore Reserve

Significantly improved metallurgy resulting in more payable metal

- Copper and gold recovery increased to 88% and 81% respectively².
- LOM AuEq payable ounces increased from 123koz to 200koz.
- Existing underground development and flotation plant minimises capital costs.

Southern Ore Zone Underground Mineral Resources³

Class	Tonnes kt	Cu %	Pb %	Zn %	Au g/t	Ag g/t	Cu kt	Pb kt	Zn kt	Au koz	Ag koz
Total	3,776	1.0	1.3	1.1	1.83	17	37	51	40	222	2,038

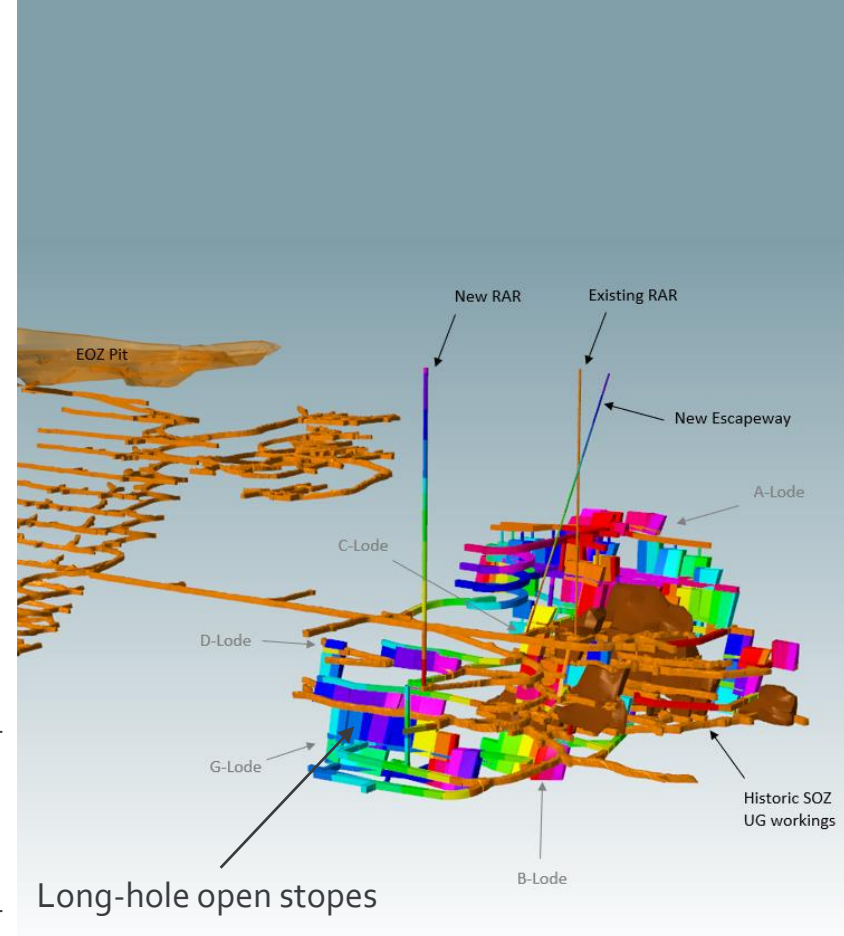
Southern Ore Zone Underground Ore Reserve³

Class	Tonnes kt	Cu %	Pb %	Zn %	Au g/t	Ag g/t	Cu kt	Pb kt	Zn kt	Au koz	Ag koz
Probable	700	0.8	1.9	1.6	1.4	20	5.5	13	11	30	450

1. See ASX Announcement dated 30 September 2024

2. In comparison to the 30 September 2024 ASX Production Target forecast to the 27/06/2023 ASX Production Target.

3. Due to rounding to appropriate significant figures, minor discrepancies may occur, tonnages are dry metric tonnes.



Oblique view of the Southern Ore Zone planned stopes

Production Target extending Mineral Hill to 2030

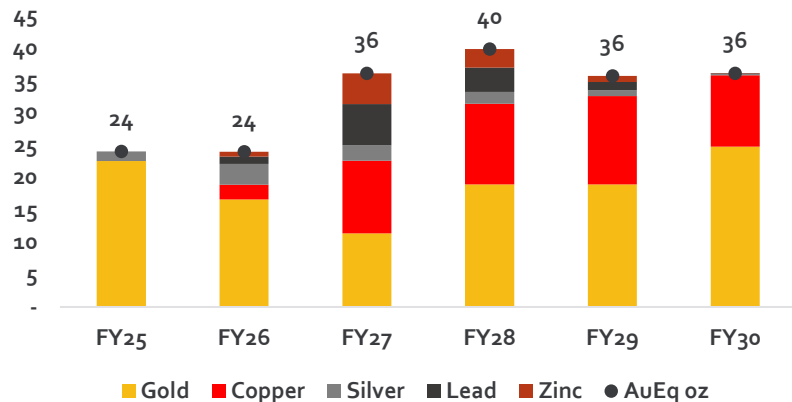
Underground mining scheduled out to 2030, six years.¹

- Six-year life of mine with highly versatile processing plant.
- Total open pit and underground Ore Reserves increased to 1.1Mt.
- Copper and gold comprise 85% of the payable metal in AuEq terms.

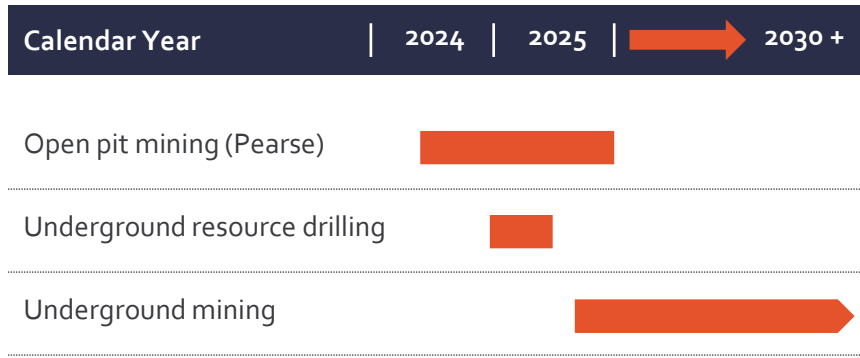
Production Target			
Open Pit	Ore Reserve	Mt	0.35
	Mineral Resource	Mt	0.19
UG Ore	Ore Reserve	Mt	0.7
	Mineral Resource	Mt	1.0
Total Life of Mine		Mt	2.2
Annual Processing Rate		ktpa	380
Payable Gold		koz	117
Payable Copper		kt	12
Payable Silver		koz	858
Payable Lead		kt	11
Payable Zinc		kt	6

¹ See ASX Announcement dated 30 September 2024.

Payable Metal (koz AuEq)



LOM forecast of payable metal



Kingston group level growth strategy

Three focal points – grow cash, increase scale, realise value from Misima

1. Grow Cash

- Maximise throughput and margins.
- Capitalise on upside opportunities.

2. Increase Scale at Mineral Hill

- Exploration.
- Regional acquisition.
- Expand the plant.

3. Realise Value from Misima

- Sale / JV.
- Progress to production.

- Open pit mining and processing is generating cash flow.
- Underground drilling to commence in Q1 2025.
- Potential crystallisation of Misima value through a sale or JV deal could realise shareholder value and spur additional growth.
- Fully functional plant increases scope to add regional deposits and increase scale.

Grow cash with open pit mining

Plant now operating at 400ktpa throughput rate¹

Mining Oxides:

Mining open pit oxides for dore production.

Consistent Performance:

Crushing / grinding now exceeding nameplate.

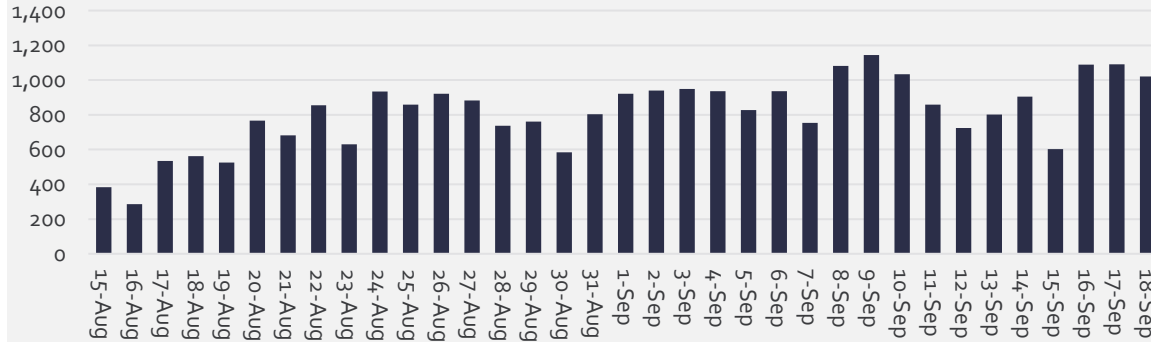
Upside on Gold Recovery:

Gold recovery exceeding budget of 85%.

Cash Flow:

Steady income from weekly gold and silver dore sales.

Daily Throughput (t)



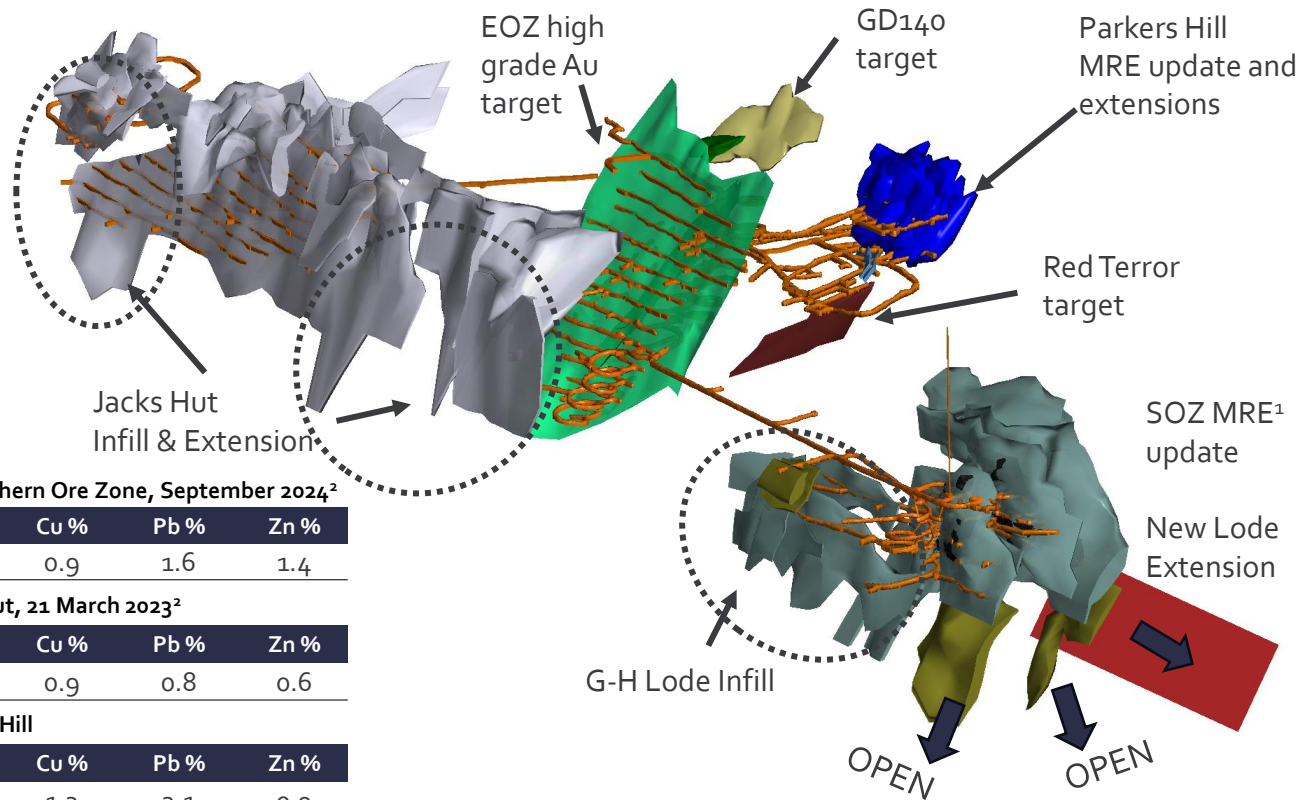
Mineral Hill gold/silver dore (20% gold and 78% silver by weight)

1. See ASX Announcement dated 19 September 2024

Increase scale at Mineral Hill

Strategy on expanding Mineral Resources within the mine

- Mineralisation over 2.5km.
- Multiple ore bodies.
- Existing development in place.



Mineral Resource Estimate for the Southern Ore Zone, September 2024²

Tonnes (Mt)	Au g/t	Ag g/t	Cu %	Pb %	Zn %
3.80	1.29	19	0.9	1.6	1.4

Mineral Resource Estimate for Jack's Hut, 21 March 2023²

Tonnes (Mt)	Au g/t	Ag g/t	Cu %	Pb %	Zn %
1.60	1.25	20	0.9	0.8	0.6

Mineral Resource Estimate for Parker's Hill

Tonnes (Mt)	Au g/t	Ag g/t	Cu %	Pb %	Zn %
1.80	0.19	43	1.3	2.1	0.9

1. MRE – Mineral Resource Estimate

2. See ASX Announcement dated 21 March 2023 and 30 September 2024 for MRE announcements

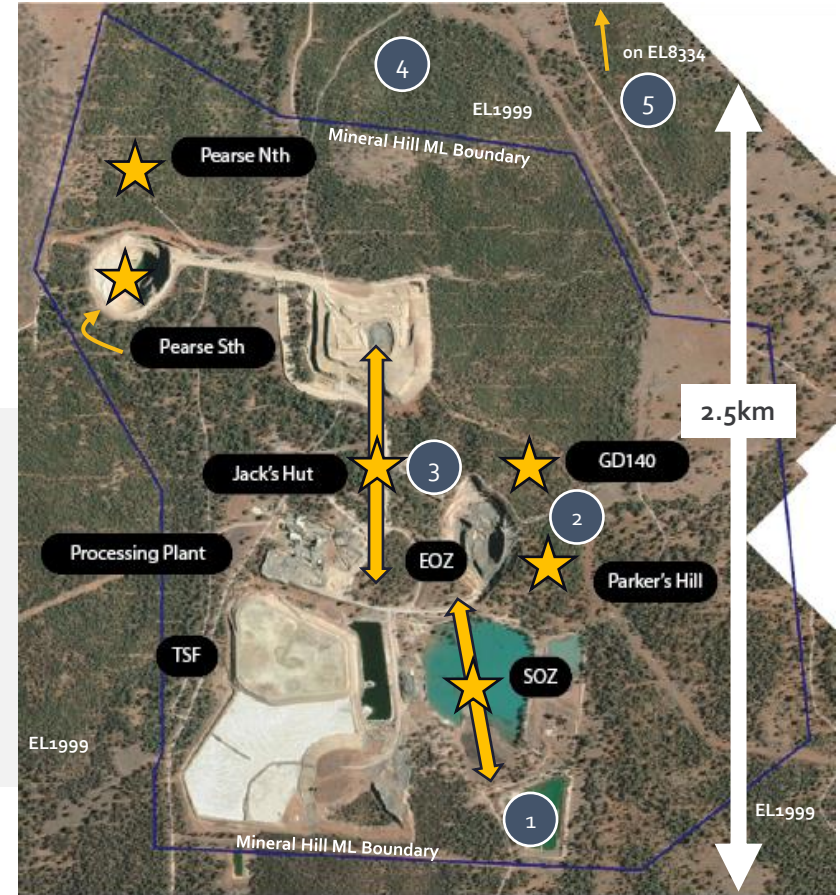
Adding inventory with near mine exploration

Near mine advanced targets

Near Mine Targets

- Four priority targets within the ML.
- Focus on resource expansion and extending the mine life.
- Grow high margin feed stock adjacent to the plant.

- 1 SOZ infill & extension drilling.
- 2 Parkers Hill – GD140 resource updates.
- 3 Jacks Hut and EOZ extensions.
- 4 Bogong target – drilling.
- 5 EL8334- Webers Gossan and Long Panel – regional exploration.



Grow the operating scale with regional exploration

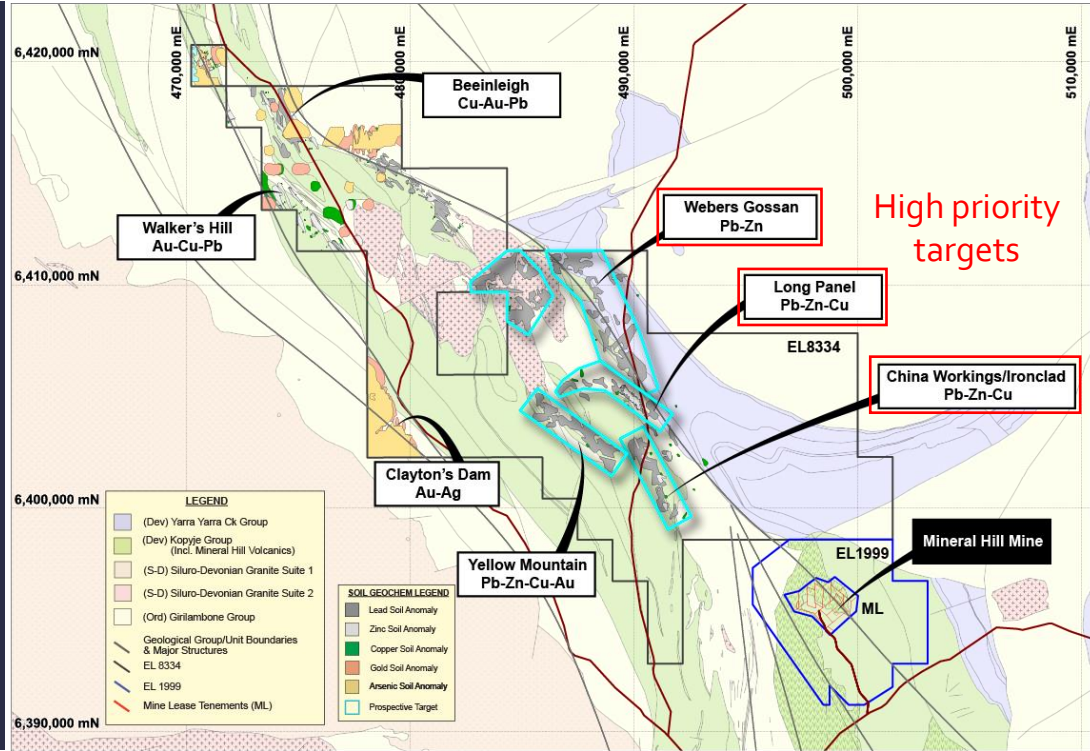
Highly prospective drill targets and geochemical signatures

Shift to creating value with exploration

- Capital spend on mining and processing now largely complete.
- Cash flow from Mineral Hill and potential Misima transaction.

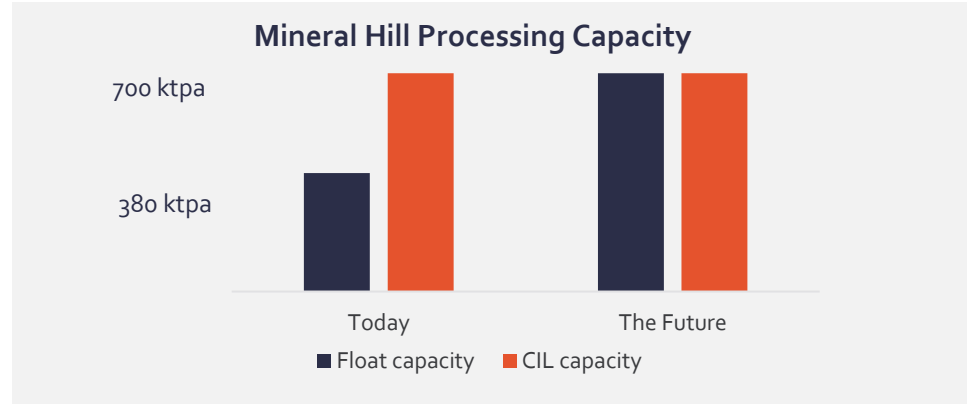
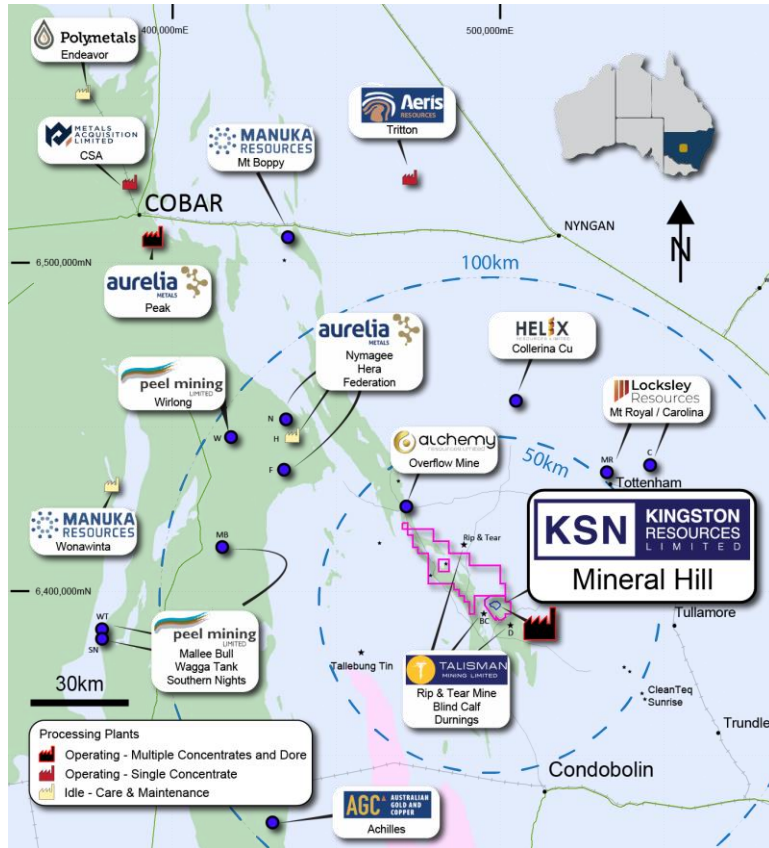
Advancing untested targets in EL8334

- Drilling of under-explored ground – potential growth catalyst.
- Highly prospective geology and regional scale structures.
- Extensive lead-in-soil anomalies. Federation discovered with this tool.
- Coincident geophysical anomalies.



Add projects within trucking distance to Mineral Hill

Justify expansion of grinding and flotation from 380ktpa to 700ktpa



Mineral Hill is the only facility in the southern Cobar Basin with a CIL and multiple concentrate capability



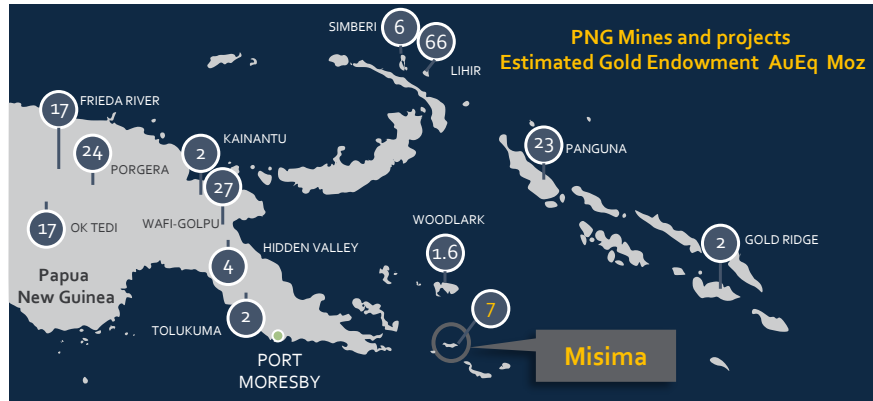


Misima Gold Project

Misima – high value growth asset

Large scale, long-life, low-cost open pit gold and silver mine

- Large, low-cost, 20-year gold project averaging 128koz gold per annum.
- NPV of A\$956m¹ at a gold price US\$1,800/oz
- Gold price scenario of \$2,000/oz lifts LOM NPV to \$1.3bn.
- Sale / JV process underway to bring about value realisation.



1. See KSN ASX announcements on 6 June 2022 for further detail

Definitive Feasibility Study¹

Resource
3.8Moz Gold
Ore Reserve
1.73Moz Gold

Resource
22.1Moz Silver
Ore Reserve
4.1Moz Silver

Production
2.4Moz Gold
AISC
A\$1,217/oz

NPV
\$956M pre-tax
NPV
22%

LOM Revenue
\$6.1bn
LOM pre-tax FCF
\$2.7bn

Extensive
mining history
de-risks development
pathway

Exploration Upside Potential and Site Layout

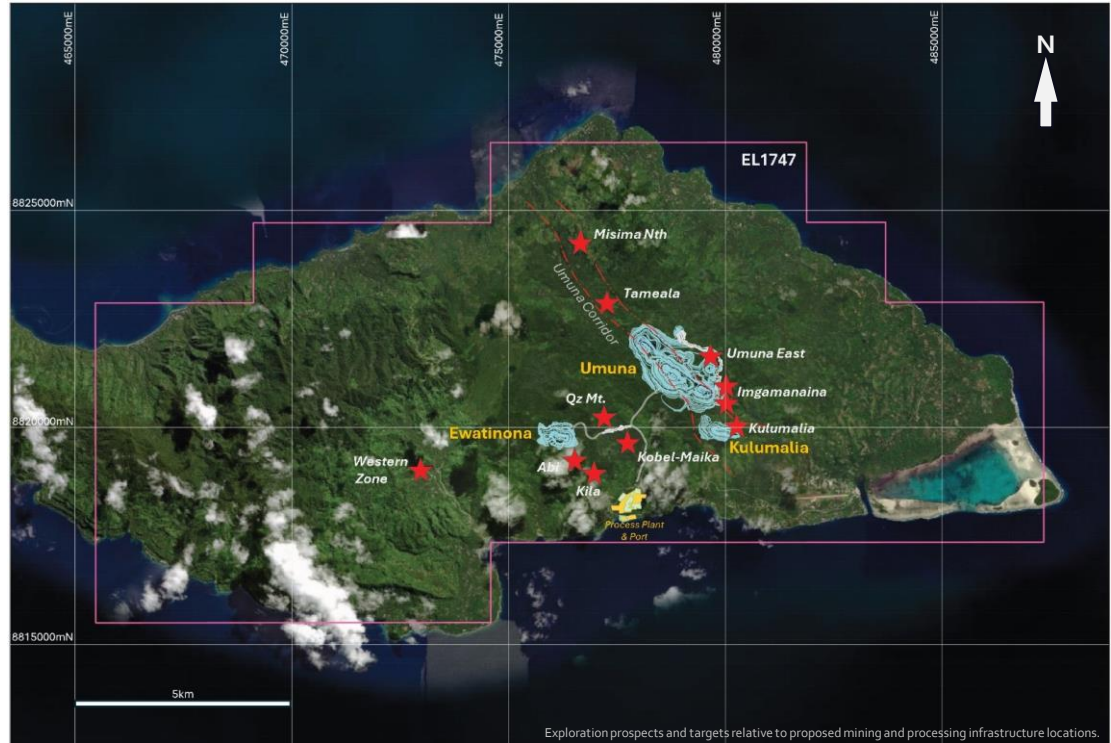
Excellent infrastructure and proven accessibility

Abundant Exploration Targets

- Potential for additional high-grade inventory by targeting the Umuna corridor.
- Extension potential at depth and along strike.
- New discovery potential between Ewatinona pit and process plant location (Abi-Kila).

Misima Gold Project Plant Layout

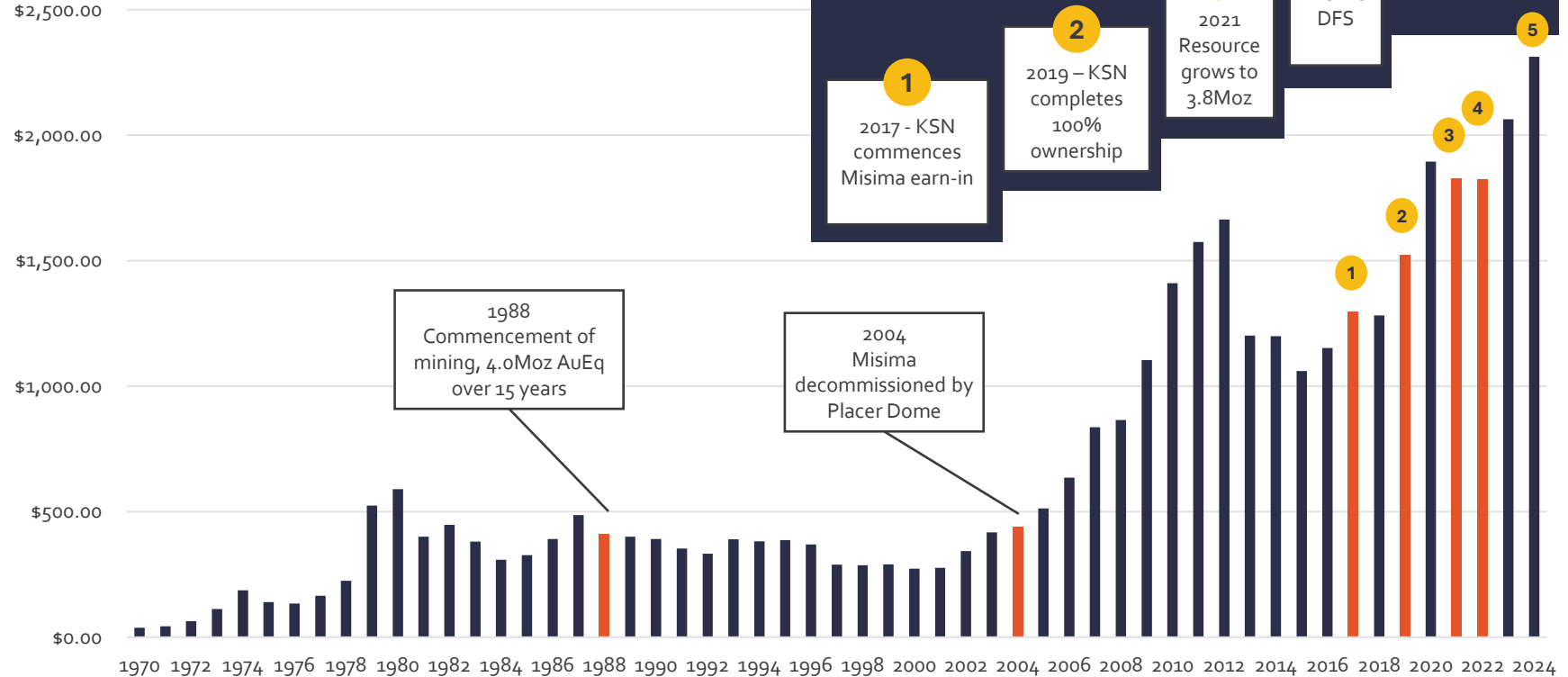
- Simple layout, utilising previous plant location.
- Leveraging existing land topography and historical footprint.



Misima Project history

High leverage to the gold price

Gold Price



Summary: Focus on executing our clearly defined strategy

Leveraging the existing gold-copper asset base while advancing future growth opportunities



Experienced Management Team: Focus on maximising returns from Mineral Hill and Misima



Prime Cobar Location: Mineral Hill in the heart of Cobar Basin, rich in copper & gold (clean energy transition)



Fast-Track Production Boost: Expanding production from open pit mining and moving into underground mining



Strategic advantage: Fully approved and operating processing plant with multiple growth options



Misima Gold Project: Large scale, long-life, low-cost open pit gold and silver mine



Appendix

Highly experienced and well-regarded Executive Team

Significant experience across the development life cycle through to production



Mick Wilkes

Non-Executive Chairman

Mick is a seasoned mining professional with 35 years' experience in the industry, primarily in gold and base metals. He has specialised in sustainable project development, construction, and operations throughout his career.



Andrew Corbett

Managing Director

Andrew is a highly experienced mining engineer with over 25 years in mine management and financial markets. He has an in-depth understanding of mining, equity markets, business development and corporate strategy.



Tony Wehby

Non-Executive Director

Tony is a highly experienced board member and chairman, previously Non-Executive Chairman of Tellus Resources Limited and Aurelia Metals Limited, and a Director of Ensurance Ltd.



Stuart Rechner

Non-Executive Director

Stuart is an experienced company director and geologist with a background in project generation and acquisition in Australia and overseas. Mr Rechner holds degrees in both geology and law.



Building a safe and sustainable culture

Investing in our people and our community



A large employer in
Condobolin



ESG framework: safe,
responsible and sustainable



Investing in our local and
residential workforce

Mineral Hill – Social License

Environmental and Social Licence to operate

- ✓ Permits in place for mining and processing
- ✓ Cash backed environmental bonds
- ✓ Tailings capacity in place and expansion plans scheduled
- ✓ Biodiversity offset established



Competent Person Statement

Competent Person's Statement - Mineral Resource Reported in Accordance with 2012 JORC Code – Mineral Hill

The information in this report that relates to the reporting of the Mineral Hill Mine Mineral Resource Estimate is based on and fairly represents, information and supporting documentation compiled by Mr. Stuart Hayward (BAppSc (Geology)) MAIG, who is a Member of the Australian Institute of Geoscientists. Mr. Stuart Hayward is a full-time employee of Kingston Resources Limited. Mr. Hayward has sufficient experience relevant to the style of mineralisation and type of deposit under consideration and to the activity which he is undertaking to qualify as a Competent Person as defined in the 2012 Edition of the 'Australasian Code for Reporting of Exploration Results, Mineral Resources and Ore Reserves'. Mr. Hayward confirms that the information in the market announcement provided is an accurate representation of the available data and studies for the material mining project and consents to the inclusion in this report of the matters based upon the information in the form and context in which it appears. The Company confirms that the form and context in which the Competent Person's findings are presented have not been materially modified from the original report.

Competent Person's Statement - Mineral Resource Reported in Accordance with 2004 JORC Code – Mineral Hill

The information in this release that relates to Mineral Resources is based on information reviewed by Mr. Stuart Hayward (BAppSc (Geology)) MAIG, who is a Member of The Australian Institute of Geoscientists and a full-time employee of Kingston Resources Limited. Mr Hayward has sufficient experience in the style of mineralisation and types of deposit under consideration and to the activity he is undertaking to qualify as a Competent Person as defined in the 2004 Edition of the 'Australian Code for Reporting of Exploration Results, Mineral Resources and Ore Reserves'. Mr. Hayward confirms that the information in the market announcement provided is an accurate representation of the available data and studies for the material mining project and consents to the inclusion in the report of the matters based on his information in the form and context in which it appears. All Mineral Resource estimates were prepared and first disclosed under the JORC Code 2004 and are an accurate representation of the available data and studies for the Mineral Hill Mine. This information has not been updated since to comply with the JORC Code 2012 on the basis that the information has not materially changed since it was last reported. Work will commence on close of acquisition by the Company to bring each of the Mineral Resources into line with the JORC Code 2012.

Competent Person's Statement – Ore Reserve Reported in Accordance with JORC Code – Mineral Hill

The Ore Reserve and Mineral Resources estimates were prepared by a Competent person in accordance with the JORC Code 2012 with exception of the Parkers Hill Mineral Resource Estimates that have been prepared by a Competent Person in accordance with the JORC Code 2004 and have not been updated to comply with the JORC Code 2012 on the basis that the information has not materially changed since it was last reported. Pearse, Parkers Hill, Jacks Hut and the Southern Ore Zone Mineral Resource estimates and Ore Reserves have been adjusted by mining depletion using the production wireframes created by the site survey department at the time of mining. These wireframes represent the mining activities at these deposits to the best of Kingston's knowledge although they are not to be viewed as complete or accurate in their entirety and therefore mining depletion may be revised when Kingston is able to produce revised determinations on more complete data and verification thereof. Information pertaining to Mineral Resource Estimates (MRE) and Ore Reserves (OR) in this presentation has been previously released to the public. The tables on this page indicate the authors of the historical Resources/Reserves and the dates they were initially published. Kingston is not reporting these estimates as its own with exception of the MRE and OR for the TSF which has not been reported previously by any other company. The other original reports are available through the ASX website.

The Competent Person signing off on the the overall Pearse Openpit Ore Reserves Estimate is Mr John Wyche BE (Min Hon) BComm CP, of Australian Mine Design and Development Pty Ltd, who is a Fellow of the AusIMM and who has sufficient relevant experience in operations and consulting for open pit metalliferous mines. Mr Wyche consents to the inclusion in this report of the information pertaining Mineral Hill Pearse open pit Ore Reserves in the form and context in which it appears.

The Competent Person signing off on the overall underground SOZ Ore Reserves Estimate is Mr Steven Weckert BE ME (Min) CP, of Australian Mine Design and Development Pty Ltd, who is a Member of the AusIMM and who has sufficient relevant experience in operations and consulting for underground metalliferous mines. Mr Weckert consents to the inclusion in this report of the information pertaining to the Mineral Hill SOZ Ore Reserve in the form and context in which it appears.

Competent Person's Statement - Mineral Resource Reported in Accordance with 2012 JORC Code – Misima

The information in this report that relates to the reporting of the Misima Mineral Resource Estimate is based on and fairly represents, information and supporting documentation compiled by Mr. Stuart Hayward (BAppSc (Geology)) MAIG, who is a Member of the Australian Institute of Geoscientists. Mr. Stuart Hayward is a full-time employee of Kingston Resources Limited. Mr. Hayward has sufficient experience relevant to the style of mineralisation and type of deposit under consideration and to the activity which he is undertaking to qualify as a Competent Person as defined in the 2012 Edition of the 'Australasian Code for Reporting of Exploration Results, Mineral Resources and Ore Reserves'. Mr. Hayward confirms that the information in the market announcement provided is an accurate representation of the available data and studies for the material mining project and consents to the inclusion in this report of the matters based upon the information in the form and context in which it appears. The Company confirms that the form and context in which the Competent Person's findings are presented have not been materially modified from the original report.

Competent Person's Statement – Ore Reserve Reported in Accordance with 2012 JORC Code – Misima

The Competent Person signing off on the overall Misima Ore Reserves Estimate is Mr John Wyche BE (Min Hon), of Australian Mine Design and Development Pty Ltd, who is a Fellow of the Australasian Institute of Mining and Metallurgy and who has sufficient relevant experience in operations and consulting for open pit metalliferous mines. Mr Wyche consents to the inclusion in this report of the matters based upon the information in the form and context in which it appears.

Kingston confirms that it is not aware of any new information or data that materially affects the information included in all ASX announcements referenced in this release, and that all material assumptions and technical parameters underpinning the estimates in these announcements continue to apply and have not materially changed.

Ore Reserve

Deposit	JORC	ASX Announcement	Competent Person	Company
Misima	2012	KSN 06/06/2022	John Wyche	AMDAD
Pearse North	2012	KSN 30/9/2024	John Wyche	AMDAD
Pearse South	2012	KSN 30/9/2024	John Wyche	AMDAD
SOZ	2012	KSN 30/9/2024	John Wyche	AMDAD

Mineral Resource

Deposit	JORC	ASX Announcement	Competent Person	Company
Misima	2012	KSN 15/09/2021	Stuart Hayward	KSN
Pearse South	2012	KSN 15/03/2023	Stuart Hayward	KSN
Pearse North	2012	KSN 7/05/2024	Stuart Hayward	KSN
Southern Ore Zone	2012	KSN 30/09/2024	Stuart Hayward	KSN
Jack's Hut	2012	KSN 21/03/2023	Stuart Hayward	KSN
Parkers Hill	2004	KBL 13/09/2011	Anthony Johnston	KBL

Mineral Hill – Resources & Reserves

Attractive commodity base with significant growth potential

Total Probable Ore Reserves											
Deposit	Kt	Au (g/t)	Ag (g/t)	Cu %	Pb %	Zn %	Au (Koz)	Ag (Koz)	Cu (Kt)	Pb (Kt)	Zn (Kt)
Pearse South	140	4.30	85				19	383			
Pearse North	240	3.20	33				25	255			
Southern Ore Zone	700	1.40	20	0.8%	1.9%	1.6%	30	450	5.5	13	11
TOTAL	1,080	2.2	31	0.8%	1.9%	1.6%	74	1087	5.5	13	11

Total Mineral Resources											
Deposit	Kt	Au (g/t)	Ag (g/t)	Cu %	Pb %	Zn %	Au (Koz)	Ag (Koz)	Cu (Kt)	Pb (Kt)	Zn (Kt)
Pearse South	204	3.77	70				25	456			
Pearse North	292	3.18	34				30	318			
Southern Ore Zone	3776	1.83	17	1.0%	1.3%	1.1%	222	2017	37	51	40
Jack's Hut	1640	1.25	20	0.9%	0.8%	0.6%	66	1051	15	14	10
Parkers Hill	1843	0.19	43	1.3%	2.1%	0.9%	11	2520	23	39	17
TOTAL	8,192	1.39	26	1.0%	1.4%	0.9%	367	6,364	75	104	67

- The Ore Reserve and Mineral Resources estimates were prepared by a Competent person in accordance with the JORC Code 2012 with exception of the Parkers Hill Mineral Resource Estimate, which been prepared by a Competent Person in accordance with the JORC Code 2004, and have not been updated to comply with the JORC Code 2012 on the basis that the information has not materially changed since it was last reported. Pearse South, Parkers Hill and the Southern Ore Zone Mineral Resource estimates and Ore Reserves have been adjusted by mining depletion using the production wireframes created by the site survey department at the time of mining. These wireframes represent the mining activities at these deposits to the best of Kingston's knowledge although they are not to be viewed as complete or accurate in their entirety and therefore mining depletion may be revised when Kingston is able to produce revised determinations on more complete data and verification thereof.
- Mineral Resources are reported inclusive of Ore Reserves.
- See Competent Person details and year of original release in the appendix
- For full information of Mineral Resource and Ore Reserves see KSN announcement titled "Mineral Hill Mineral Resource and Ore Reserve Statement" released 18 November 2021 and Mineral Hill LOM update 30 September 2024.
- Rounding to significant figures may cause minor computational discrepancies.

Measured Resource Inventory											
Deposit	Kt	Au (g/t)	Ag (g/t)	Cu %	Pb %	Zn %	Au (Koz)	Ag (Koz)	Cu (Kt)	Pb (Kt)	Zn (Kt)
Southern Ore Zone	233	2.01	11	1.2%	0.2%	0.4%	15	80.9	3	1	1
TOTAL	228	2.11	11	1.3%	0.5%	0.3%	15	80	3	1	1

Indicated Resource Inventory											
Pearse South	164	4.10	85				22	450			
Pearse North	270	3.20	34				28	297			
Southern Ore Zone	1,667	1.37	23	1.0%	2.1%	1.7%	73	1,233	16	36	28
Jack's Hut	608	1.53	7	1.3%	0.5%	0.4%	30	134	8	3	2
Parkers Hill	1,793	0.191	42	1.3%	2.1%	0.9%	11	2,443	23	38	16
TOTAL	4,938	1.11	31	1.1%	1.9%	1.1%	176	4,556	47	77	46

Inferred Resource Inventory											
Pearse South	40	2	5				3	6			
Pearse North	22	2.92	29				2	21			
Southern Ore Zone	1,876	2.22	12	0.9%	0.8%	0.6%	134	706	18	14	11
Jack's Hut	1,032	1.09	28	0.7%	1.0%	0.8%	36	917	7	11	8
Parkers Hill	50	0.20	48	0.7%	1.8%	2.4%	0.3	77	0.4	1	1
TOTAL	3,020	1.81	18	0.9%	0.9%	0.7%	175	1,727	25	26	20

Metal equivalents

This presentation quotes metal equivalent grades for the life of mine plan, Mineral Resources and Ore Reserves. Price assumptions used are based primarily on consensus forecasts with adjustments based on company expectations. Gold equivalent (AuEq) and copper equivalent (CuEq) conversion factors are used within the announcement and are calculated by dividing price/unit for each commodity (Cu/t, Au/oz, Ag/oz, Pb/t, Zn/t) and multiplying by the metallurgical recovery. Since the metallurgical recovery varies according to deposit type, the metal equivalent factors are unique for each deposit (i.e. Tailings Project, Open Pit, and Underground).

Metallurgical recoveries are based on historical production (2010-2016) as well as recent metallurgical test work and are applied to the Resource and Reserve calculated grades for each commodity. The Company is of the opinion that all the elements included in the metal equivalent calculations have a demonstrated potential to be recovered and sold. Mineral Hill has a CIL circuit, Cu flotation circuit, Pb flotation circuit and Zn flotation circuit to produce three different concentrates as well as gold dore.

$$\text{AuEq g/t} = (128.46 * \text{Cu \%}) + (0.76 * \text{Au g/t}) + (0.01 * \text{Ag g/t}) + (35.06 * \text{Pb \%}) + (31.98 * \text{Zn \%})$$

Commodity	Unit	Price	Deposit	Commodity	Recovery (%)	AuEq Factor (t)
Gold	US\$/oz	2,236	Open Pit	Gold	75	0.75
Silver	US\$/oz	27.6		Silver	69	0.01
Copper	US\$/lb	4.95	Underground	Gold	60	0.76
Lead	US\$/lb	1.09		Silver	79	0.01
Zinc	US\$/lb	1.37		Copper	88	122.75
				Lead	75	26.54
				Zinc	66	25.30

Misima Gold Project – Resources & Reserves

Misima Resources & Reserves

Indicated Resource Inventory						
Deposit	Mt	Au (g/t)	Ag (g/t)	C/O	Au (Moz)	Ag (Moz)
Umuna	93.5	0.78	4.3	0.3	2.4	13.1
Ewatinona	4.2	0.88	2.6	0.3	0.12	0.3
Cooktown Stockpile	-	-	-	-	-	-
TOTAL	97.7	0.79	4.3		2.5	13.4

Inferred Resource Inventory						
Deposit	Mt	Au (g/t)	Ag (g/t)	C/O	Au (Moz)	Ag (Moz)
Umuna	64.1	0.58	3.8	0.3	1.2	7.5
Ewatinona	3.4	0.74	3.2	0.3	0.08	0.3
Cooktown Stockpile	3.8	0.65	7	0.5	0.1	0.9
TOTAL	71.3	0.59	3.8		1.4	8.7

Misima Resources Total						
Deposit	Mt	Au (g/t)	Ag (g/t)	C/O	Au (Moz)	Ag (Moz)
Umuna	157.6	0.7	4.1	0.3	3.6	20.5
Ewatinona	7.6	0.81	2.8	0.3	0.2	0.7
Cooktown Stockpile	3.8	0.65	7	0.5	0.1	0.9
TOTAL	169	0.71	4.1	-	3.8	22.1

Misima Total Reserve Inventory (100 % probable)					
Deposit	Mt	Au (g/t)	Ag (g/t)	Au (koz)	Ag (koz)
Umuna	71.7	0.79	4.6	1,816	10,612
Ewatinona	3.9	0.81	2.4	101	303
TOTAL	75.6	0.79	4.5	1,917	10,915



- Mineral Resources are reported inclusive of Ore Reserves
- See Competent Person details and year of original release in the appendix
- For full information of Mineral Resource and Ore Reserves see KSN announcements released 18 November 2021 and 6 June 2022
- Rounding to significant figures may cause minor computational discrepancies
- Misima Resource is comprised of Indicated and Inferred material
- Reserves are shown on an unrecovered basis