

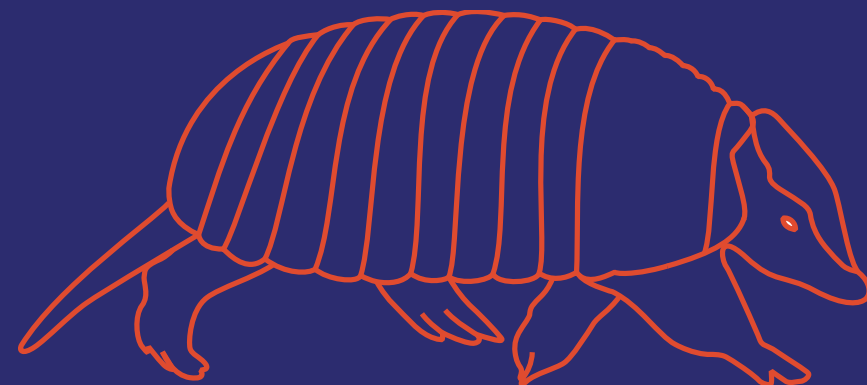


# PICHE

## Piche Resources Limited

Uranium and gold projects in Western Australia and Argentina

NOT FOR RELEASE TO U.S. WIRE SERVICES OR DISTRIBUTION IN THE UNITED STATES



# Disclaimer



The purpose of this presentation is to provide general information about Piche Resources Limited ("PRL" or the "Company"). This presentation is current as of 11 October 2024 (unless otherwise stated herein). The information in this presentation may change over time and PRL has no obligation to update or correct the historical content. Distribution of this presentation may be restricted or prohibited by law. This presentation does not involve or imply a recommendation or a statement of opinion in respect of whether to buy, sell or hold securities in the Company. Any investor should make their own independent assessment and determination as to the Company's prospects prior to making any investment decision and should not rely on the information in this presentation for that purpose. Further, this presentation is not intended to be, and is not, a prospectus or other form of disclosure document. Except for statutory liability which cannot be excluded, the Company, its officers, employees and advisers expressly disclaim any responsibility for the accuracy or completeness of the material contained in this presentation and exclude all liability whatsoever (including in negligence) for any loss or damage which may be suffered by any person because of any information in this presentation or any error or omission there from. The Company accepts no responsibility to update any person regarding any inaccuracy, omission or change in information in this presentation or any other information made available to a person nor any obligation to furnish the person with any further information. This presentation has been prepared for publication in Australia and may not be released to US wire services or distributed in the United States. This presentation does not constitute an offer to sell, or a solicitation of an offer to buy, securities in the United States or any other jurisdiction. Any securities described in this presentation have not been, and will not be, registered under the US Securities Act of 1933 ("**US Securities Act**") and may not be offered or sold in the United States except in transactions exempt from, or not subject to, registration under the US Securities Act and applicable US state securities laws. This presentation does not constitute financial product advice or take into account your investment objectives, taxation situation, financial situation or needs. This presentation consists purely of factual information and does not involve or imply a recommendation of a statement of opinion in respect of whether to buy, sell or hold a financial product. An investment in the Company is considered to be speculative in nature. Before making any investment decision in connection with any acquisition of securities, investors should consult their own legal, tax and/or financial advisers in relation to the information in, and action taken on the basis of, this presentation. This presentation and the information contained within it are strictly confidential and are intended for the exclusive benefit of the persons to whom it is given. It may not be reproduced, disseminated, quoted or referred to, in whole or in part, without the express consent of the Company. By receiving this presentation, you agree to keep the information confidential, not to disclose any of the information contained in this presentation to any other person and not to copy, use, publish, record or reproduce the information in this presentation without the prior written consent of the Company, which may be withheld in its absolute discretion. The distribution or release of this presentation outside Australia may be restricted by law and you should observe any such restrictions. Intended recipients who come into possession of this presentation should seek advice on and observe any such restrictions. Any failure to comply with such restrictions may constitute a violation of applicable securities law. FORWARD LOOKING STATEMENTS This document may contain certain "forward-looking statements" and comments about future events. Forward-looking statements may include words such as "anticipate", "believe", "expect", "project", "forecast", "estimate", "outlook", "upside", "likely", "intend", "should", "could", "may", "target", "plan", "potential" and other similar expressions. Indications of, and guidance on, production, future earnings and financial position and performance are also forward-looking statements. These statements are provided as a general guide only and should not be relied upon as an indication, prediction or guarantee of future performance. Actual results may differ materially from those expressed or implied in such statements and these differences may be material. They involve known and unknown risks and other factors, many of which are beyond the control of, or unknown to, PRL and may involve significant elements of subjective judgement and assumptions as to future events which may or may not be correct. Recipients are cautioned not to place undue reliance on forward looking statements and except as required by law or regulation, PRL assumes no liability to update these forward-looking statements. Such statements speak only as of the date hereof, and PRL has no obligation to update or revise any such statements to reflect any change in events, conditions or circumstances on which any such statement is based.

*The information in this presentation is based on information compiled by Stephen Mann, who is a member of the Australasian Institute of Mining and Metallurgy. Stephen Mann is a Director and substantial shareholder of Piche Resources Limited. Stephen Mann has sufficient experience which is relevant to the style of mineralisation and type of deposit under consideration and to the activity which he is undertaking to qualify as a Competent Person as defined in the 2012 edition of the 'Australasian Code for Reporting of Exploration Results, Mineral Resources and Ore Reserves' (JORC Code). Stephen Mann consents to the inclusion of this information in the form and context in which it appears in this presentation.*

*Investors should refer to the prospectus lodged with ASX on 11 July 2024 for additional information regarding prior released exploration results and diagrams, together with ASX announcements dated 18 July 2024, 16 September 2024, 26 September 2024 and 10 October 2024. The Competent Person Statement and disclosures in those announcements have not materially changed.*



## PICHE RESOURCES LIMITED – URANIUM/GOLD ASX LISTED

Company and ticker	Piche Resources Limited (PR2)
ASX listing	15 July 2024
Assets	Uranium and gold project areas in Australia and Argentina
Directors	John (Gus) Simpson, Stephen Mann, Pablo Marcet, Clark Beyer, Stanley Macdonald
Cash	\$8.4 million
Issues shares	123.4 million
Market capitalisation	\$12.4 million
Enterprise value	\$4.0 million
Broker	Euroz Hartleys

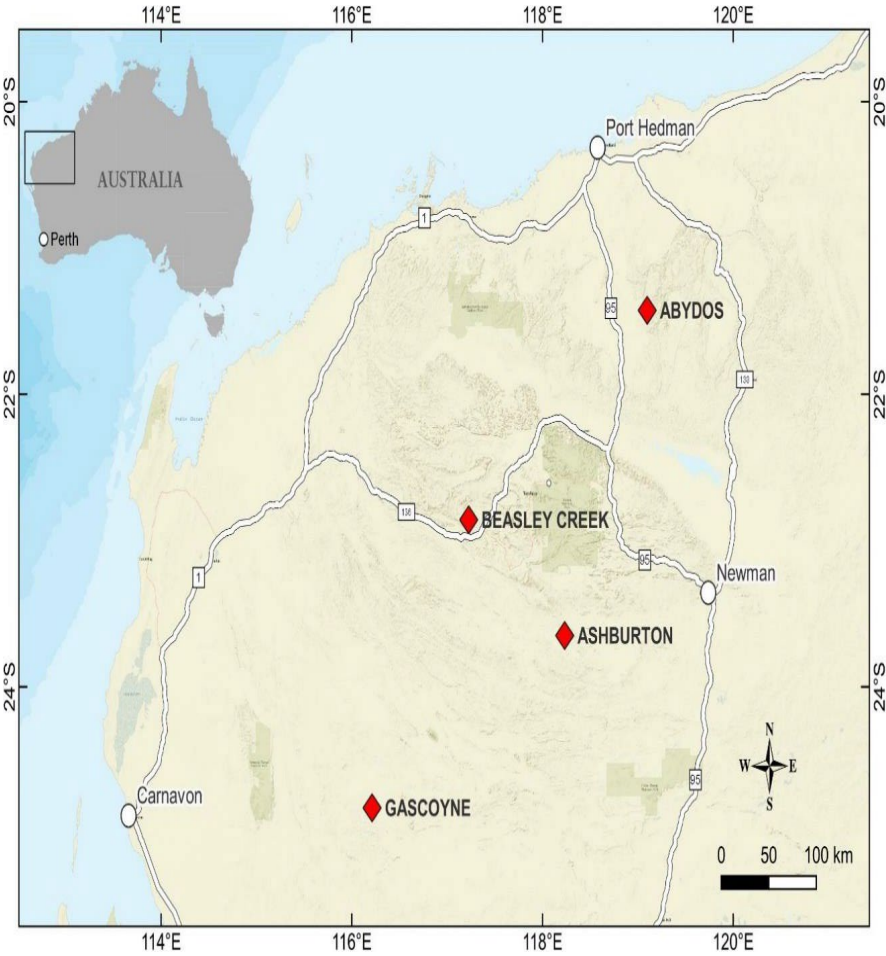


# PICHE PORTFOLIO



Targeting globally significant discoveries in Tier-1 mineral provinces

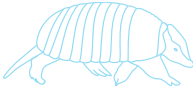
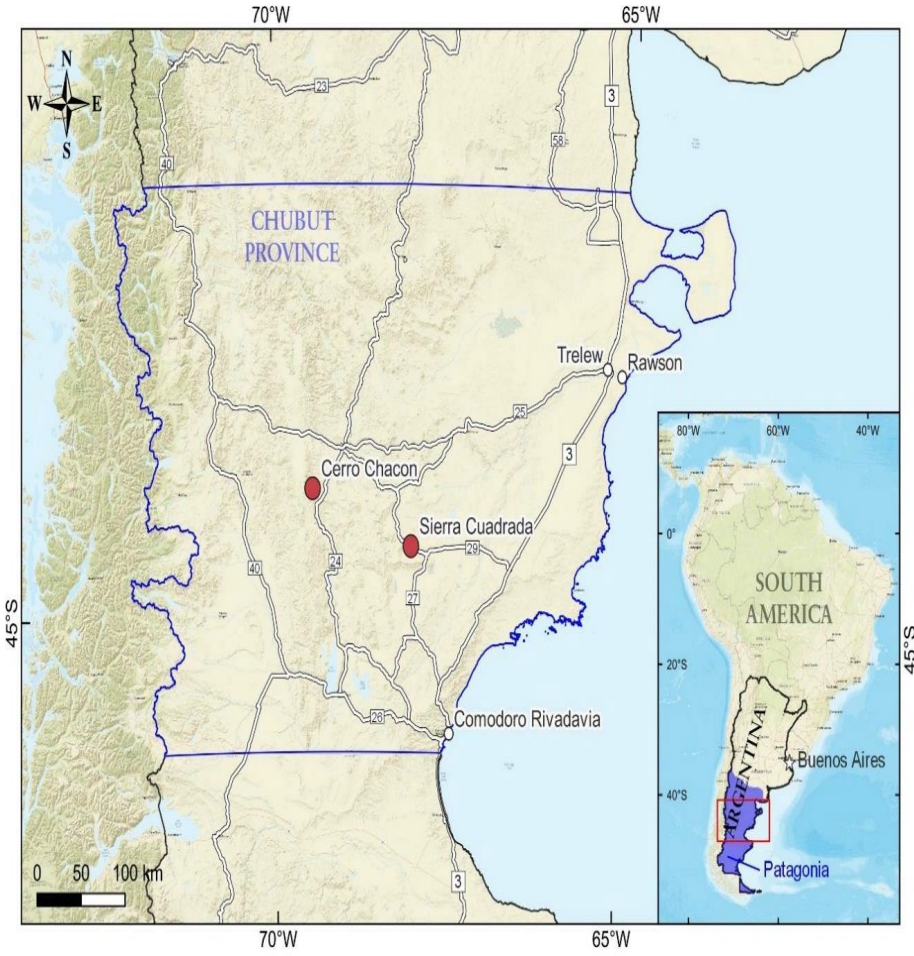
## Western Australia



Uranium Projects	
<b>Sierra Cuadrada</b>	
Commodities	Uranium
Land package	1,310km <sup>2</sup>
Ownership	100%
<b>Ashburton</b>	
Commodities	Uranium, Rare earths
Land package	122km <sup>2</sup>
Ownership	100%
<b>Gascoyne</b>	
Commodities	Uranium
Land package	35km <sup>2</sup>
Ownership	100%

Gold & Base Metal Projects	
<b>Cerro Chacon</b>	
Commodities	Gold, Silver
Land package	365km <sup>2</sup>
Ownership	100%
<b>Abydos</b>	
Commodities	Gold, Base metal
Land package	19km <sup>2</sup>
Ownership	100%
<b>Beasley Creek</b>	
Commodities	Gold, Base metal
Land package	22km <sup>2</sup>
Ownership	100%

## Argentina





# CAPITAL STRUCTURE

## CAPITAL STRUCTURE

### SHARES

Directors & Management Escrowed (24 months)	39,133,333
Other shareholders	83,995,002

<b>TOTAL</b>	<b>123,128,335</b>
--------------	--------------------

### OPTIONS

Tradeable options	29,887,730
Unlisted Escrowed (24 months) Options	52,355,037
Unlisted Escrowed (12 months) Options	3,221,253
Advisor Escrowed (24 months) options	6,000,000

<b>TOTAL</b>	<b>91,464,020</b>
--------------	-------------------



# BOARD OF DIRECTORS



*Highly regarded and experienced board with the corporate and technical skills to find, fund and develop mines*



**John (Gus) Simpson**

Executive Chairman

John has over 37 years experience in mineral exploration, development and mining. He has extensive experience across equity capital markets and corporate governance, and was previously Executive Chairman/Founder at Peninsula Energy Limited (ASX:PEN), a USA uranium producer



**Stephen Mann**

Managing Director

Stephen is a geologist with over 40 years experience in the exploration, discovery and development of mining projects, including 20 years in the uranium sector. He was previously the Australian Managing Director of Orano, the world's third largest uranium producer



**Pablo Marcet**

Executive Director

Pablo is a senior geoscientist with 38 years experience in the exploration, discovery and development of mineral deposits. He is currently an independent Director of lithium producer, Arcadium Lithium (NYSE:ALTM) and was previously a director of Barrick Gold (NYSE:GOLD) and U308 (TSX:U308)



**Clark Beyer**

Non-Executive Director

Clark is an internationally recognised nuclear industry executive with over 35 years experience. He was previously Managing Director of Rio Tinto Uranium Limited and is currently principal of Global Fuel Solutions LLC, which provides strategic consulting to the international uranium and nuclear fuels market



**Stanley Macdonald**

Non-Executive Director

Stanley is a nationally recognised mining entrepreneur who has been a founding director and instrumental in the success of numerous ASX listed companies, such as Giralia Resources, Northern Star and Redhill Iron. He is currently a Director of Zenith Minerals



## Argentina Management Team

*Piche has established an experienced and professional local team to advance the Argentina project portfolio*

In-country Executive Director:	<b>Pablo Marcet</b>
Country Manager:	<b>Fernando Rodriguez</b>
Uranium Project Manager:	<b>Francisco Parra (ex CNEA)</b>
Gold Project Manager:	<b>Fernando Abarzua</b>
Environmental Scientists:	<b>Viviana Alric/Maria Claudia Cano</b>
Media and Public Affairs Manager:	<b>Gerardo Cladera</b>
Community Relations Manager:	<b>Ruben Reinoso</b>
Provincial lawyer:	<b>Eduardo Varela</b>



# Uranium Projects

---

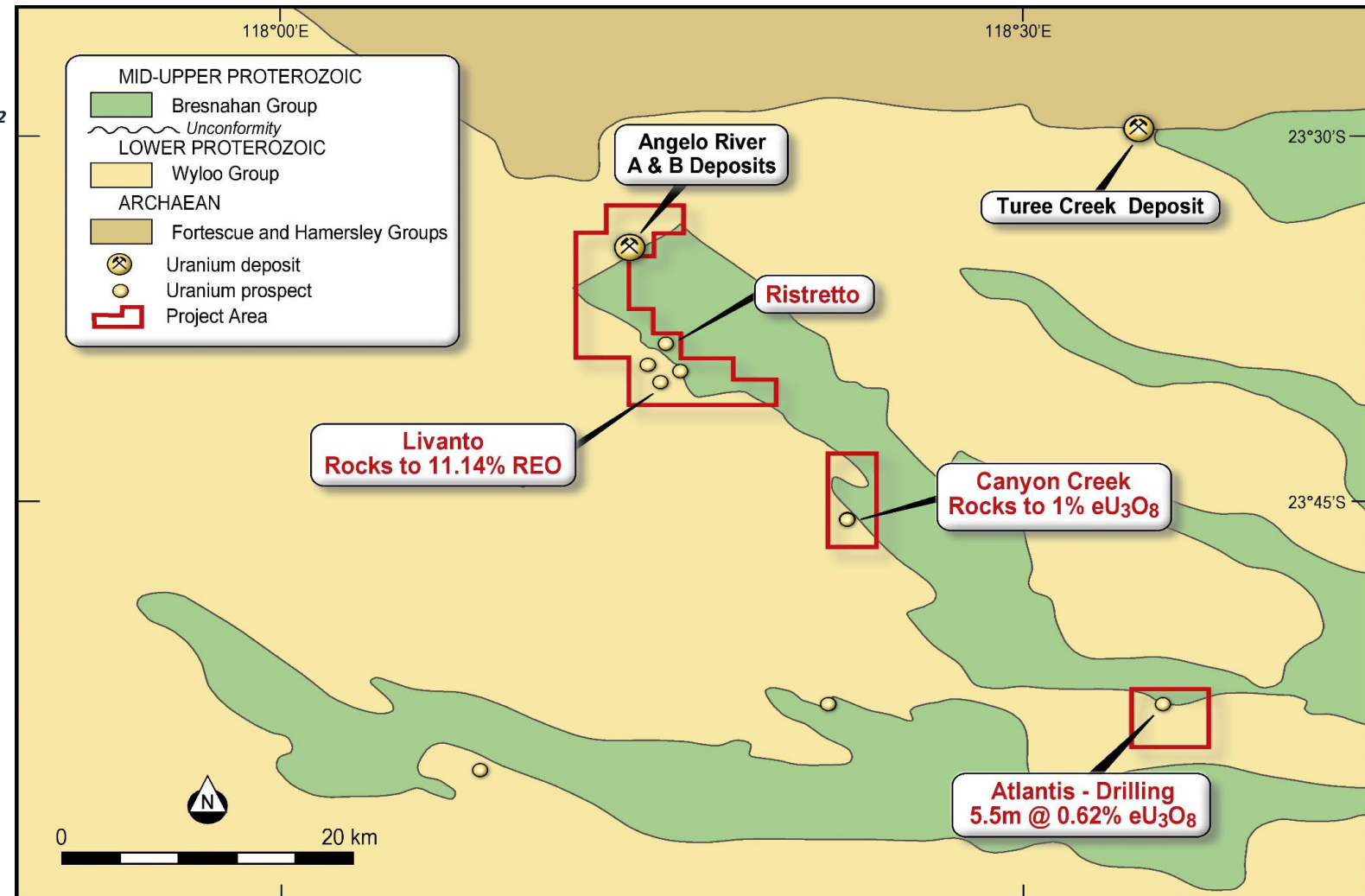


# ASHBURTON PROJECT - URANIUM - AUSTRALIA

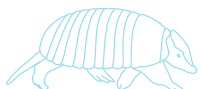
## 3 exploration licenses covering 122km<sup>2</sup>

- Pilbara region - Western Australia - 1,150 km N of Perth
- 14 uranium occurrences across 65 km of strike
- Prior drilling has identified significant high-grade unconformity uranium
- Sparsely explored
- Numerous high grade uranium drill hole and rock chip assays
- Multiple untested geophysical anomalies

Potential to host mineral deposits similar to Pine Creek Geosyncline and Athabasca Basin



Simplified geology and tenement schematic of the Piche Resources Ashburton uranium projects

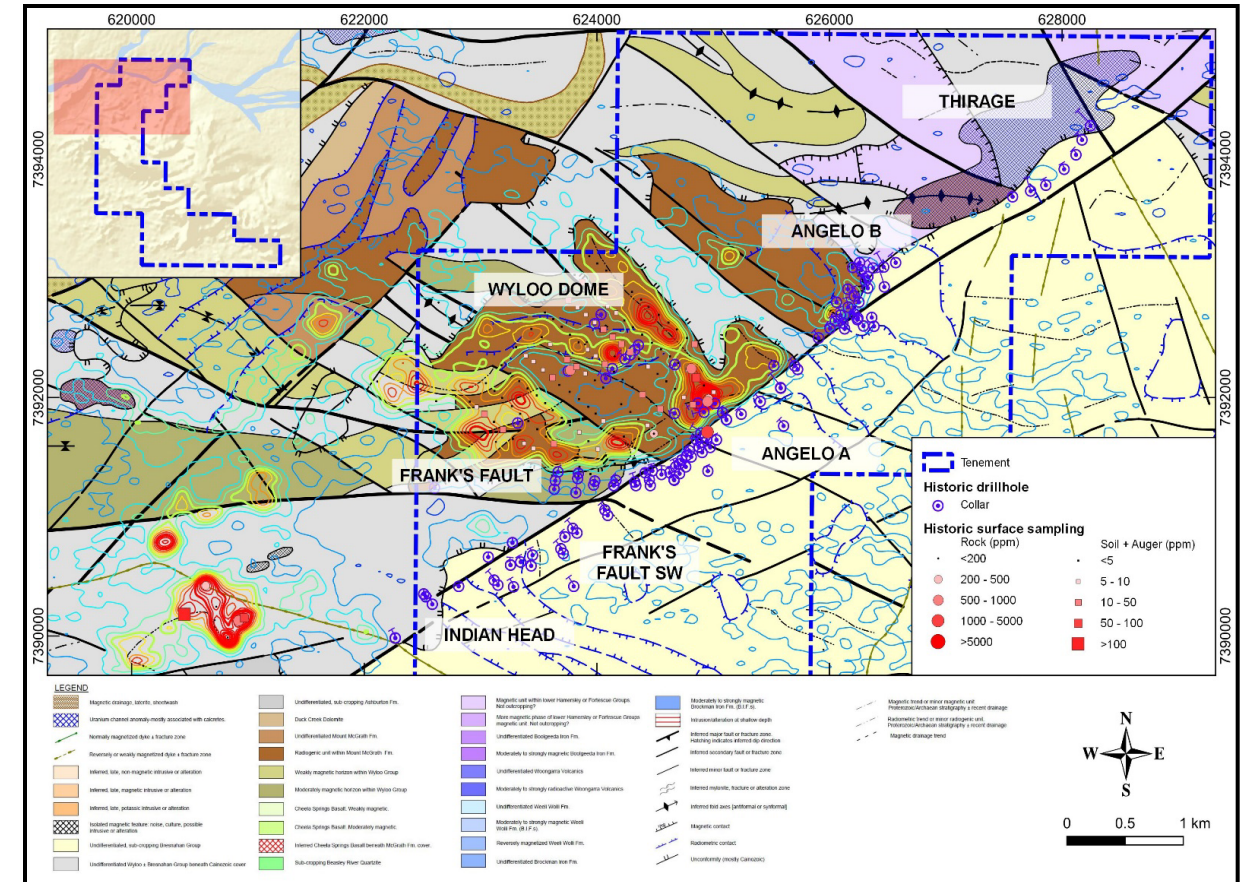




# ASHBURTON PROJECT - URANIUM - AUSTRALIA

## Angelo River prospects are part of a large, well mineralised uranium system

- 1978-1982, Pancontinental drilled 62 holes - 7km of BB Fault
- 71 intercepts greater than 500ppm (approx. 1.1lb U3O8 per tonne)
- High grade drill results including:
  - AR1004 10.5m @ 4,380ppm U3O8 incl. 4.5m @ 1.05%
  - AR1009 9.0m @ 3,490ppm U3O8
  - AR1028B 5.9m @ 3,300ppm U3O8
  - AR1032 7.9m @ 2,530ppm U3O8
  - AR1033 7.6m @ 2,530ppm U3O8
  - AR2010 7.4m @ 1,430ppm U3O8
  - AR2013 4.7m @ 820ppm U3O8
  - AR2013 3.7m @ 1,170ppm U3O8
  - AR2045 9.2m @ 1,340ppm U3O8
- Angelo River A and B - non-JORC mineralisation is open along strike and down dip
- Q1-2 2024 **SRK study: reinterpretation** of the structural controls of high-grade uranium
- It concluded that the mineralisation is trending SE – NW
- A reverse circulation and diamond drill programme to test this hypothesis is ongoing with latest results including:
  - ARC001 6.98m @ 1,617 ppm eU3O8 from 101.84 metres
  - ARC002 4.36m @ 2,205 ppm eU3O8 from 109.89 metres
  - ARC003 3.96m @ 1,516 ppm eU3O8 from 86.89 metres
  - ARC004 6.02m @ 801 ppm eU3O8 from 83.55 metres
  - ARC006 3.45m @ 5,129 ppm eU3O8 from 137.62 metres
  - incl. 0.34m @ 16,050 ppm eU3O8 from 139.11 metres
  - ARC007 1.30m @ 503 ppm eU3O8 from 123.37 metres



Angelo River prospects drill hole locations and interpreted geology

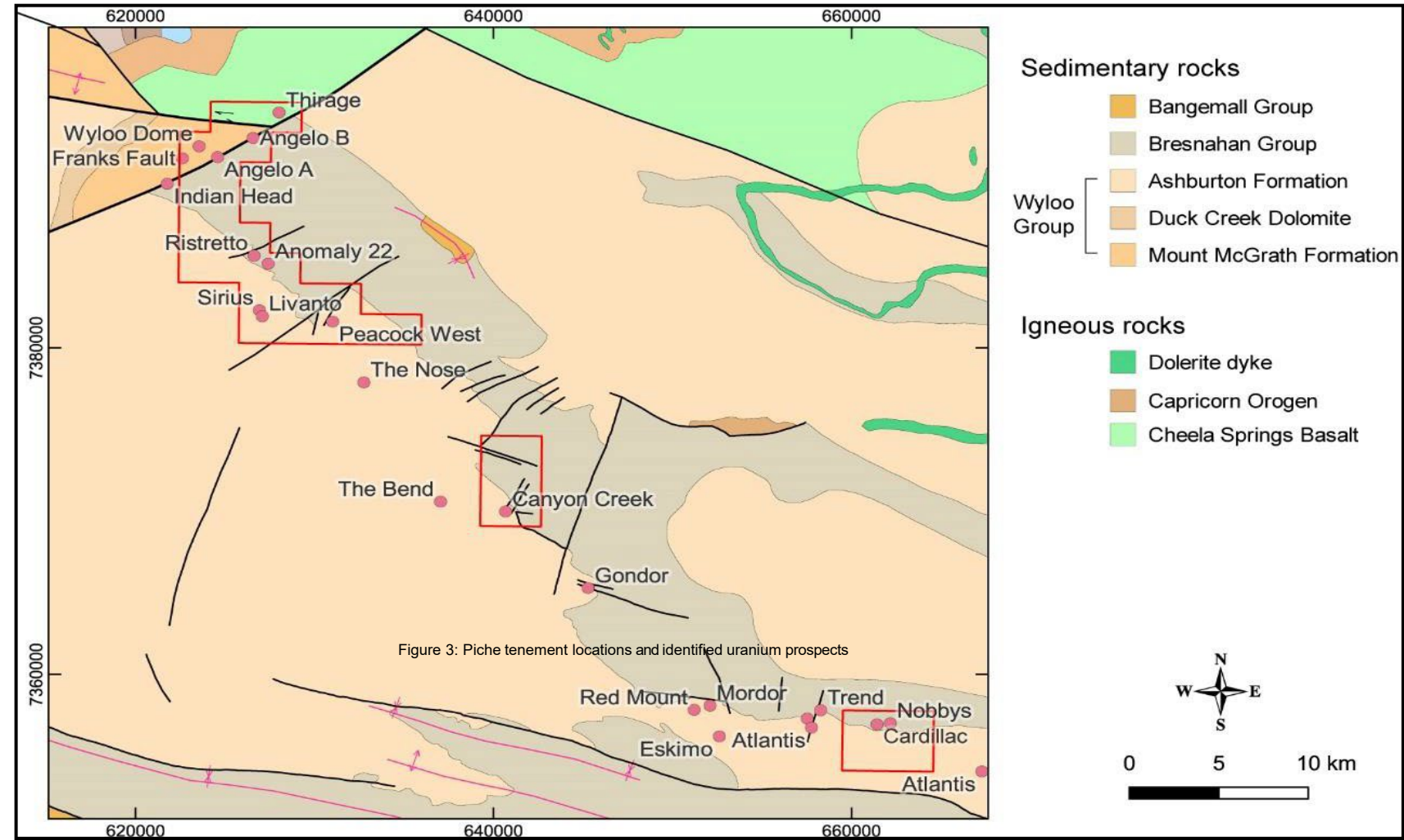
RC and diamond drilling is ongoing Q4, 2024



# ASHBURTON PROJECT - URANIUM - AUSTRALIA

## Multiple other prospects

- **Atlantis:** Significant drill intersections include:
  - 5.5m @ 0.62% U<sub>3</sub>O<sub>8</sub>
  - 2.2m @ 0.74% U<sub>3</sub>O<sub>8</sub>, and
  - rock chip samples of up to 37% U<sub>3</sub>O<sub>8</sub>
- **NOG:** Rock chip samples include:
  - 3.03% U<sub>3</sub>O<sub>8</sub>
  - 0.71% U<sub>3</sub>O<sub>8</sub> and
  - 0.67% U<sub>3</sub>O<sub>8</sub>
  - associated with surface uranium radiometric anomalies
- **Canyon Creek:** Rock chip samples include:
  - 1.0 % U<sub>3</sub>O<sub>8</sub>
  - associated with surface uranium radiometric and Tempest EM anomalies
- Tempest EM identified deeper conductors with coincident surface radiometric anomalies at:
  - **Peacock**
  - **Peacock West**
  - **Ristretto** and
  - **Anomaly 22**



Simplified geology and tenement schematic of the Piche Resources Ashburton uranium prospects

**Drilling planned at Atlantis prospect for 2025**

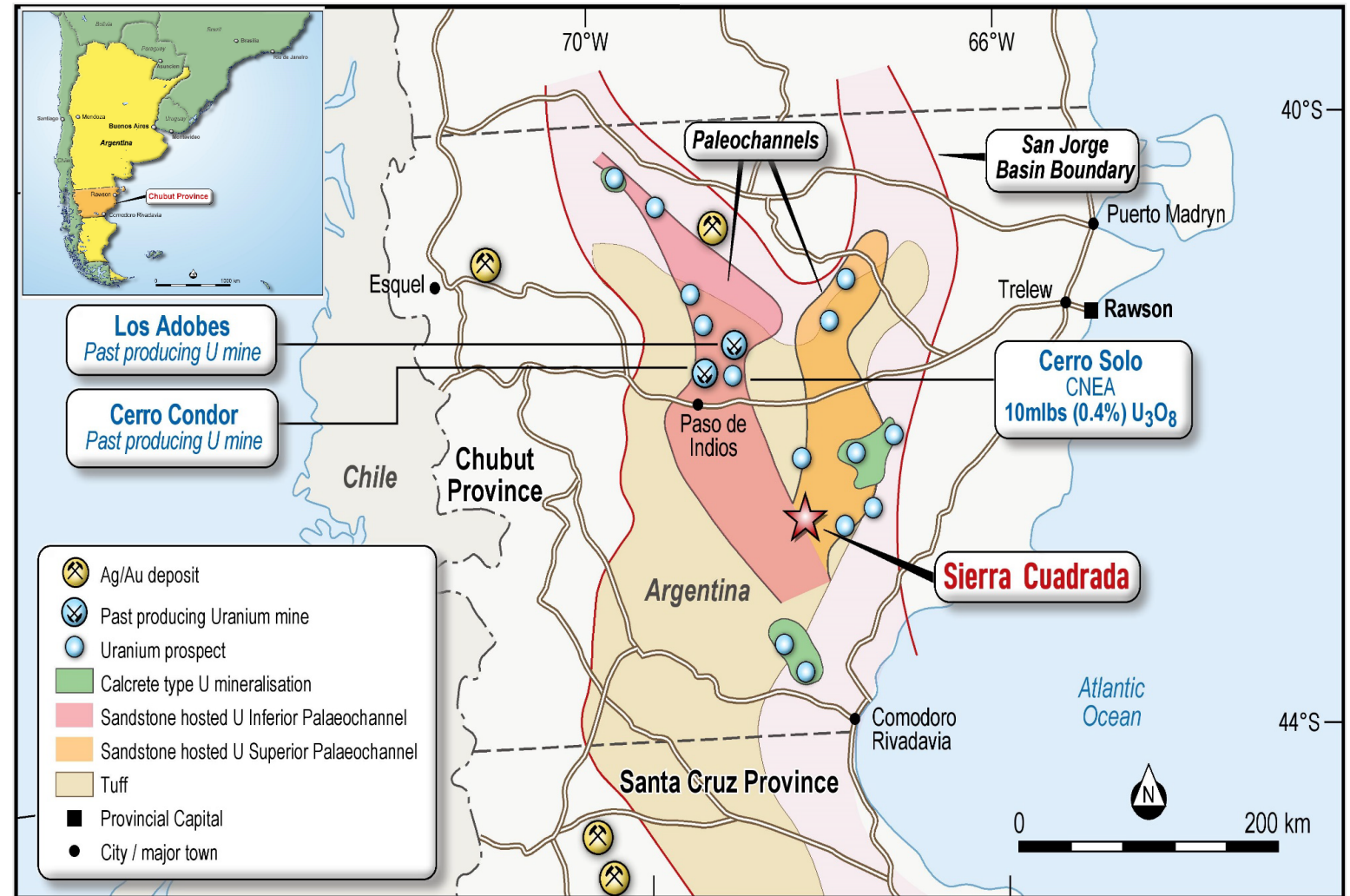




# URANIUM DISCOVERY & MINING – ARGENTINA

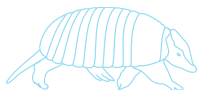
## Significant historical uranium exploration

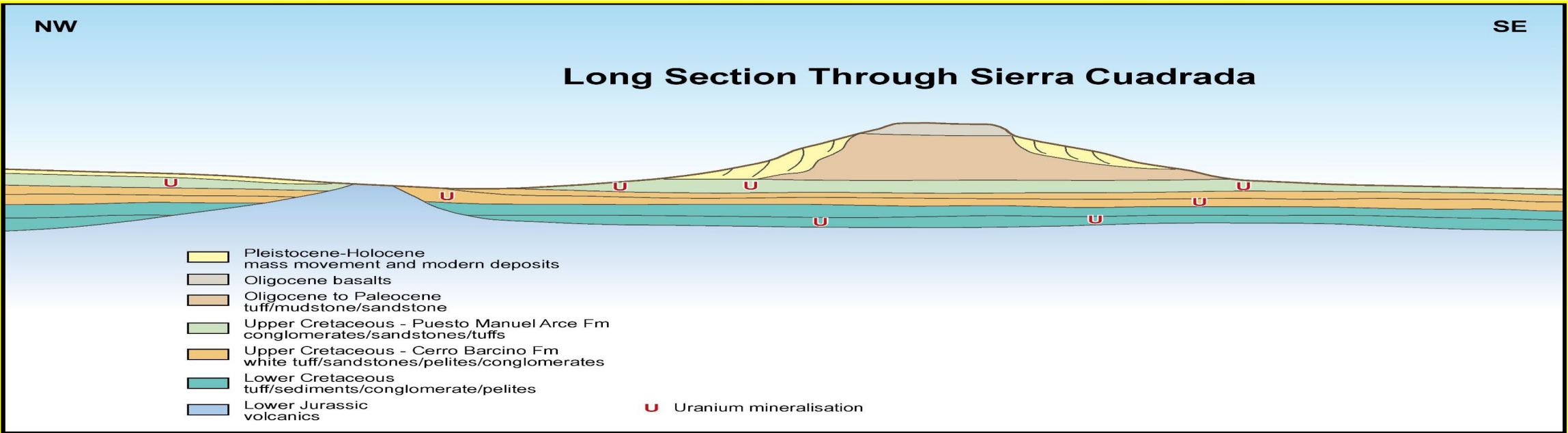
- The Argentine National Atomic Energy Commission (CNEA) explored for uranium across Argentina from the mid 1950-80's resulting in 1,000's of anomalies and **8 mines developed**
- In the Chubut Province radiometric and EM surveys identified two large Cretaceous paleochannels in the San Jorge Basin which extend for over 200km N-S and 30-60km E-W
- San Jorge Basin exploration was very successful with numerous uranium occurrences and deposits being discovered in the sandstone outcrop
- 3 high-grade uranium deposits were delineated in Chubut
  - Cerro Condor - open pit mine - outcropping - 6000 ppm U<sub>3</sub>O<sub>8</sub>
  - Los Adobes - open pit mine - outcropping - 1400 ppm U<sub>3</sub>O<sub>8</sub>, and
  - Cerro Solo - depth 50-130m - 10mlb est. - 4000 ppm U<sub>3</sub>O<sub>8</sub>



Simplified schematic of the San Jorge Basin and Chubut Cretaceous Paleochannels

CNEA has not undertaken any significant uranium exploration in Argentina since the late 1980's due to funding issues



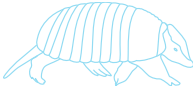


Schematic of long section through Cretaceous Paleochannels

2023 outcrop mapping program - uncut average grade of 2,579 ppm U3O8 (5.67lbs per tonne)

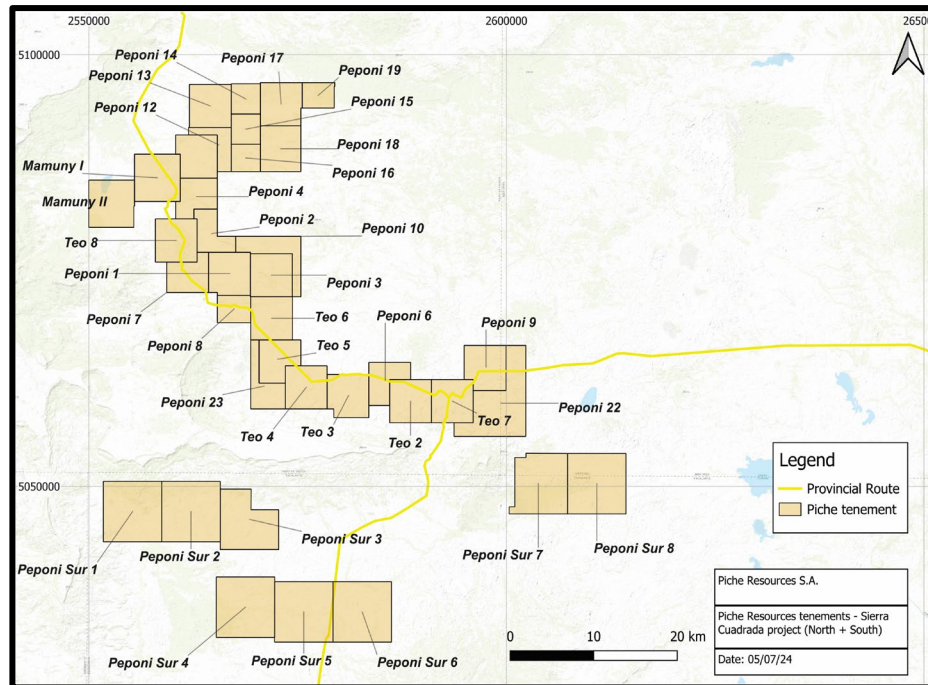
U3O8 av ppm		2579	3194	3707	4254
samples		92	74	63	54
cutoff		0	150 g/t U	300g/t U	450 g/t U
lbs. U3O8/tonne		5.67	7.03	8.16	9.36

Significant potential for repeat mineralisation within the paleochannel where exploration has yet to occur

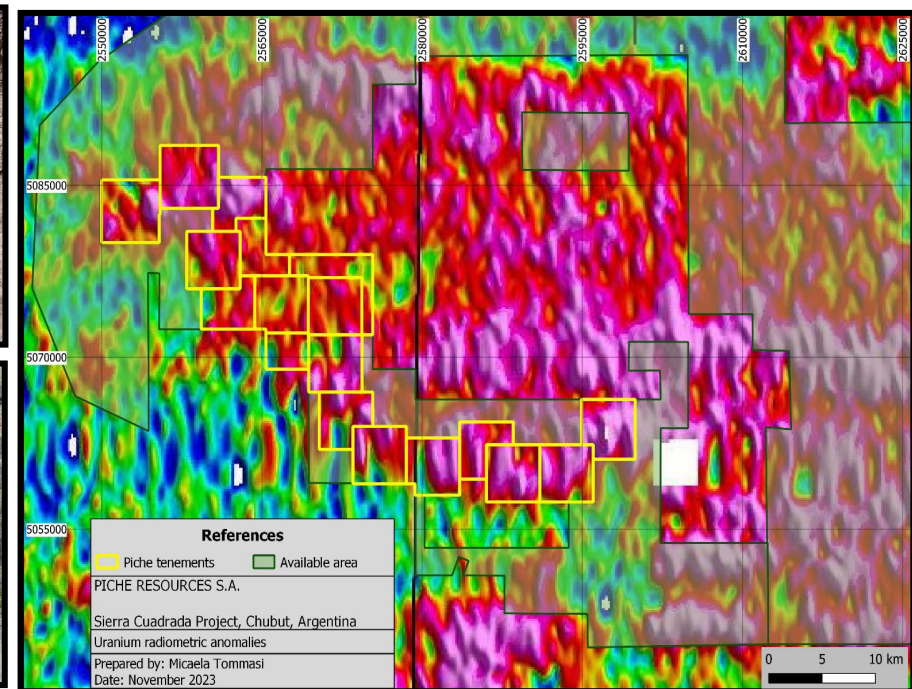




# SIERRA CUADRADA PROJECT - URANIUM



Tenement schematic of the Sierra Cuadrada uranium Projects

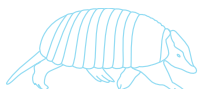


Sierra Cuadrada Radiometric Uranium Anomalies

- The Sierra Cuadrada Project has been expanded to 1,300 km<sup>2</sup> in the San Jorge Basin Cretaceous paleochannel system located 200km north of Comodoro Rivadavia
- Extensive areas of flat lying, visible uranium with assays >3000ppm U<sub>3</sub>O<sub>8</sub> (6.6 lbs. U<sub>3</sub>O<sub>8</sub> per tonne)
- The mineralisation occurs at varying stratigraphic levels - potential for repetition at depth
- Potential for one or more continuous zones of U<sub>3</sub>O<sub>8</sub> up to 30km wide and 40km long
- Mineralisation is open along strike northwest and southeast and downdip
- Can be delineated by shallow drilling and trenching, in short time frames and at very low cost



**The Sierra Cuadrada Project has significant potential to host economic uranium deposits**



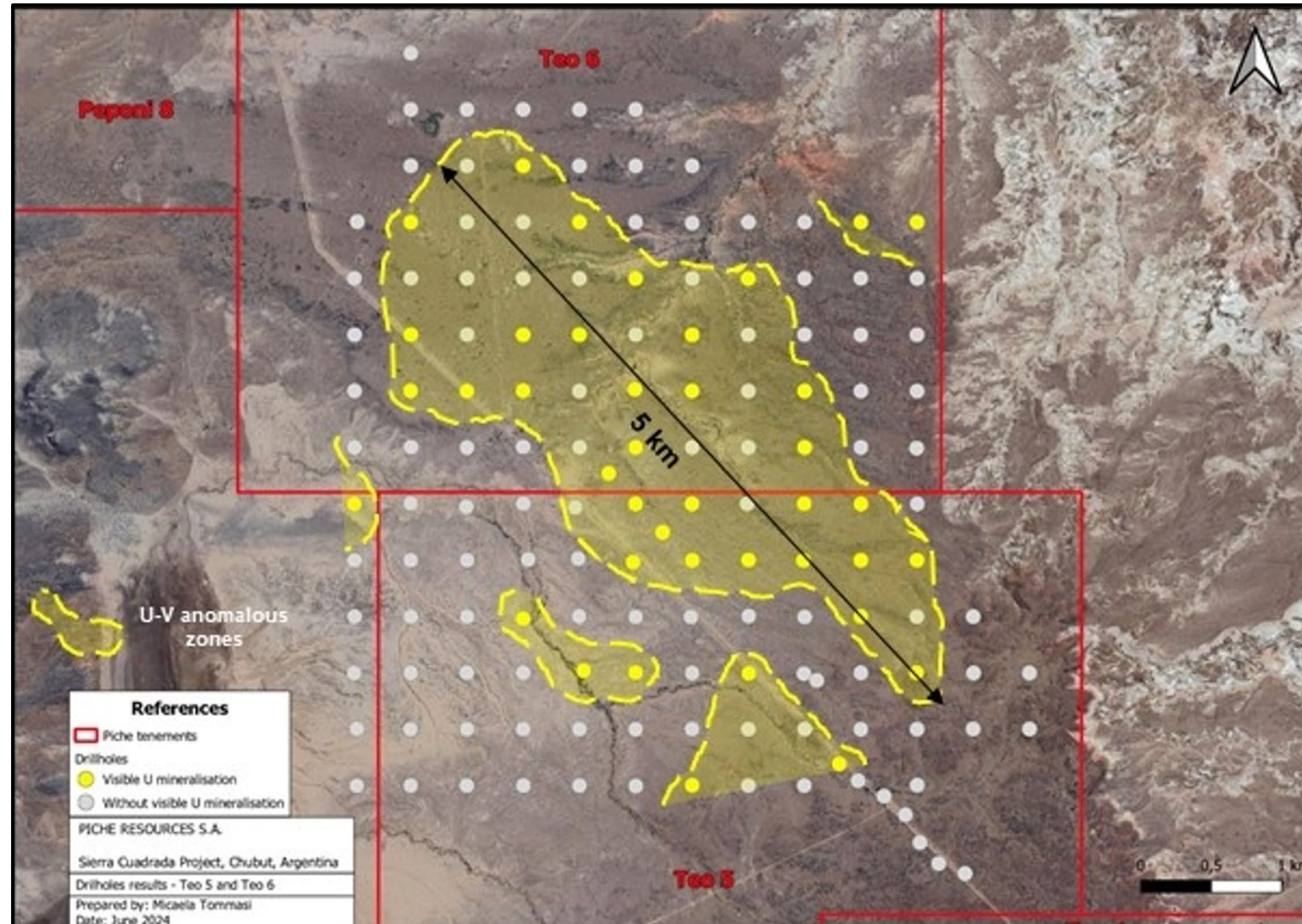


# SIERRA CUADRADA PROJECT – URANIUM - ARGENTINA

- During Q1-3 2024 Piche trialled different sampling techniques at Sierra Cuadrada to test the upper 4-6 metres of the stratigraphy for shallow flat lying uranium mineralisation
- Tractor mounted auger drilling has proved very effective in testing the target horizon down to depths of 4-6 metres
- 400 drill holes have been completed on a 400m x 400m grid at Teo 5&6 prospect
- **100+ holes have visible uranium** over 2 areas of approx. 2.5km x 5km
- 400 samples are at the Alex Stewart Laboratory in Mendoza for uranium,(and a wide range of other elements), geochemical assaying



## Teo 5&6 prospect 2024 auger drill program



Teo 5 and Teo 6 outline of Cretaceous paleochannel area with visible uranium in the drill holes



# Gold Projects

---





# CERRO CHACON PROJECT - GOLD - ARGENTINA

- Located 10km south of Paso de Indios, Chubut - Argentina
- Consists of 365km<sup>2</sup> of tenements with extensive gold/silver occurrences
- Structural mapping and geochemical sampling at Chacon Grid has identified an extensive mineralised system consistent with the surface signature at Cerro Negro Mine (reserves 5.8 million oz Au, 49.4 million oz Ag)\*
- IP surveys have also identified targets very similar to Cerro Negro prior to its drilling
- Mineralisation hosted is low-sulphidation epithermal vein systems (LSEV)
- This veining is associated with structures:
  - with varying degrees of argillic alteration
  - commonly 8-15 metres wide and
  - The LSEV systems can exceed 2-6km in length
- Multiple gold occurrences up to 13g/t Au have been recorded in the veining indicative of high-grade at depth
- PRL has a geotechnical team onsite undertaking:
  - detailed mapping and surface sampling
  - extending geophysical survey to cover known outcropping vein systems
  - gridding for planned drilling
- Extensive drill programs are planned on the Chacon Grid and La Javiela prospects
- Detailed mapping, geochemical sampling and IP surveys are planned for multiple other targets

\* <https://www.cerradogold.com/minera-don-nicolas/#geology>

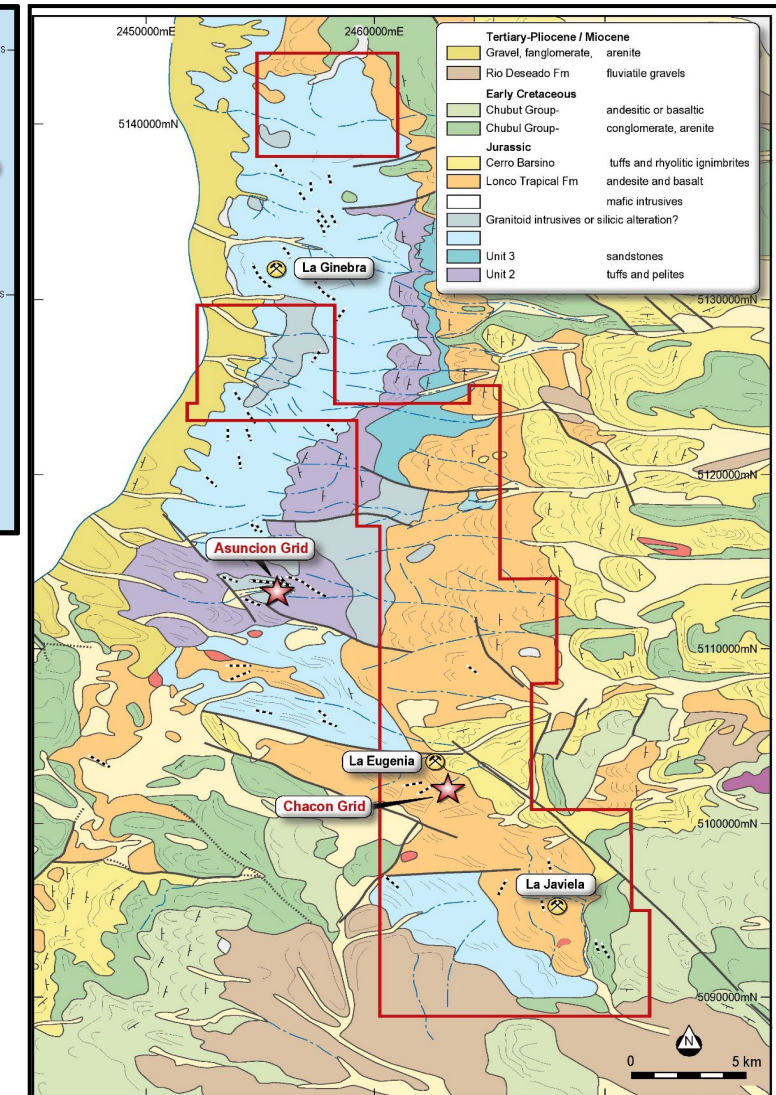


Figure 6: Cerro Chacon Interpreted Geology and Tenement Holding

Cerro Chacon has the potential to host several high-grade gold/silver deposits and be a new mineral province in its own right

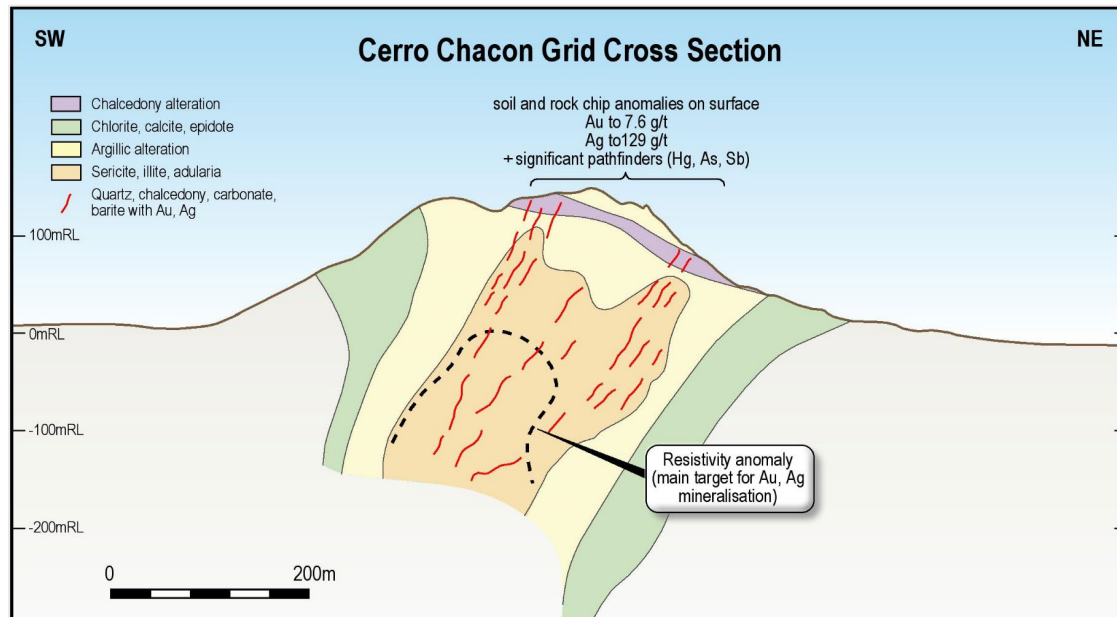
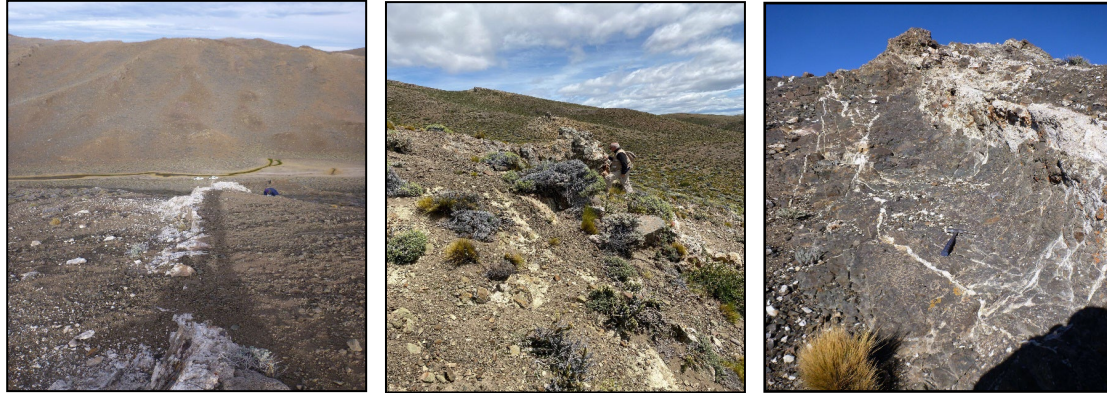




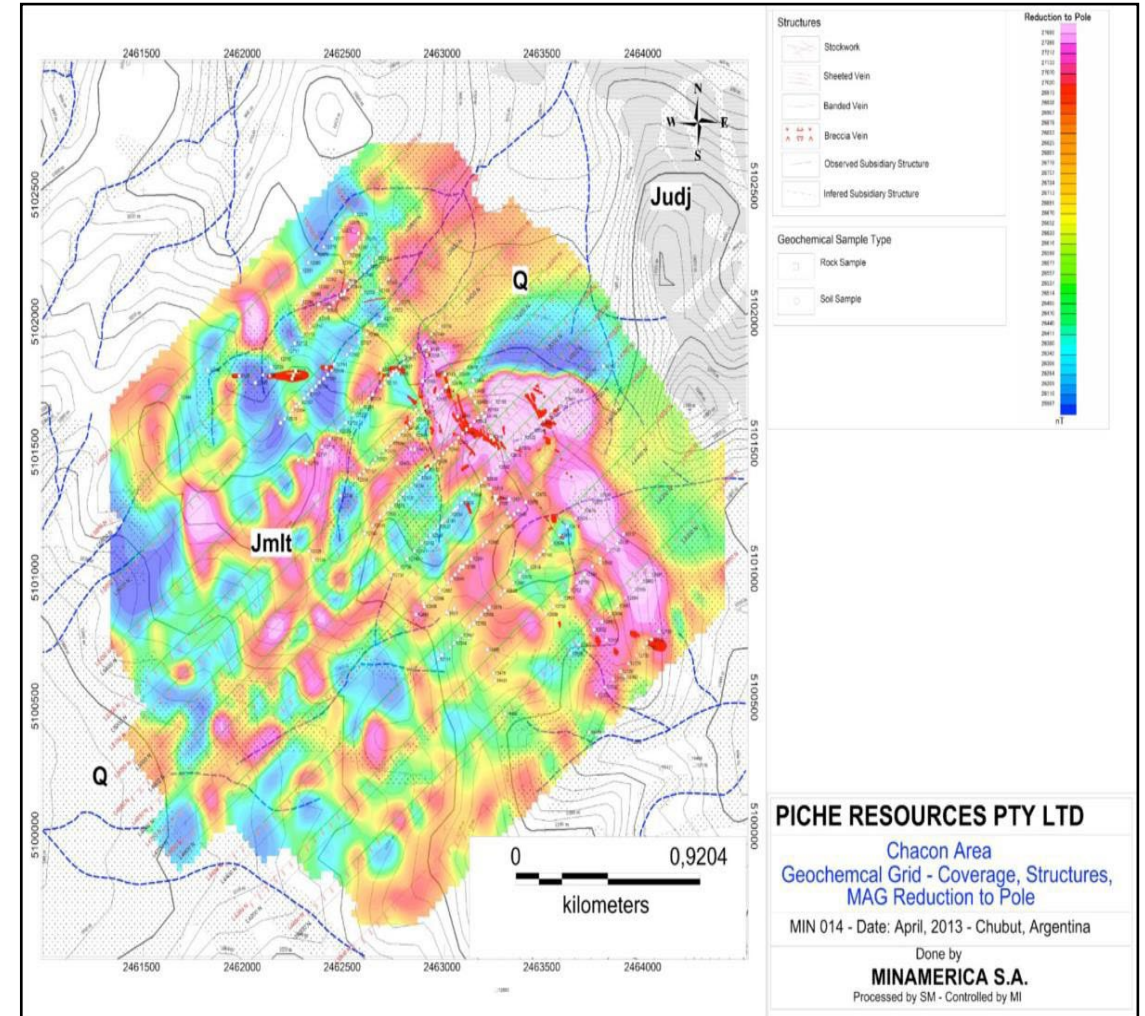
# CERRO CHACON PROJECT - GOLD - ARGENTINA



- Extensive vein networks of gold, silver and pathfinder elements
- Assays up to 13 g/t Au in wide (up to 50m) and
- Up to 6 km long zones of epithermal veining



Simplified schematic of Cerro Chacon Grid cross section



Chacon Grid prospect is a high priority project with multiple outcropping high-grade prospects for gold/silver mineralisation

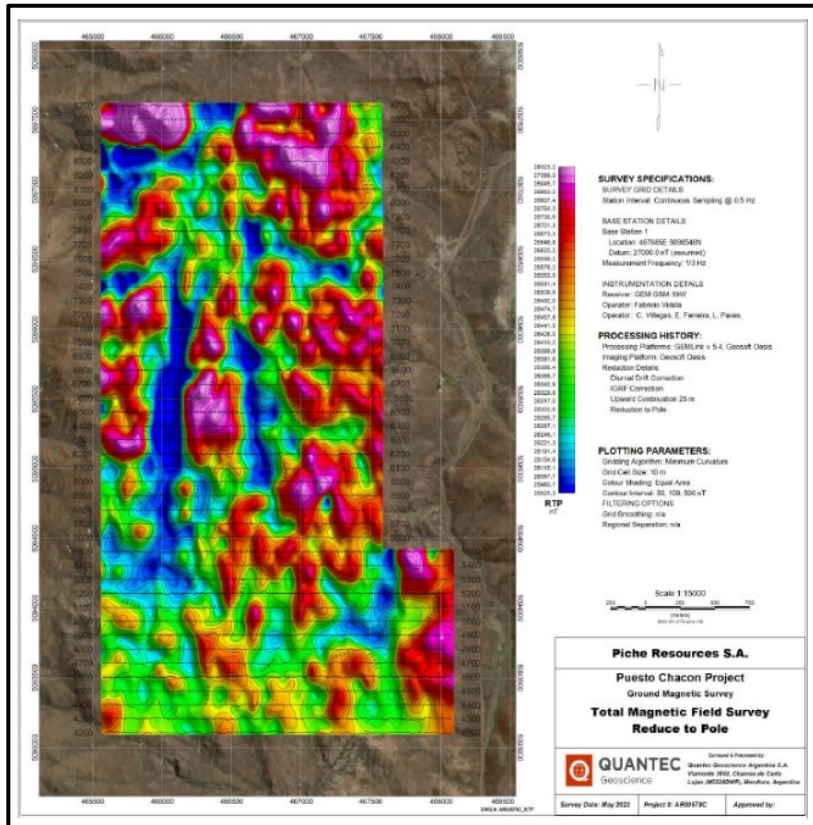




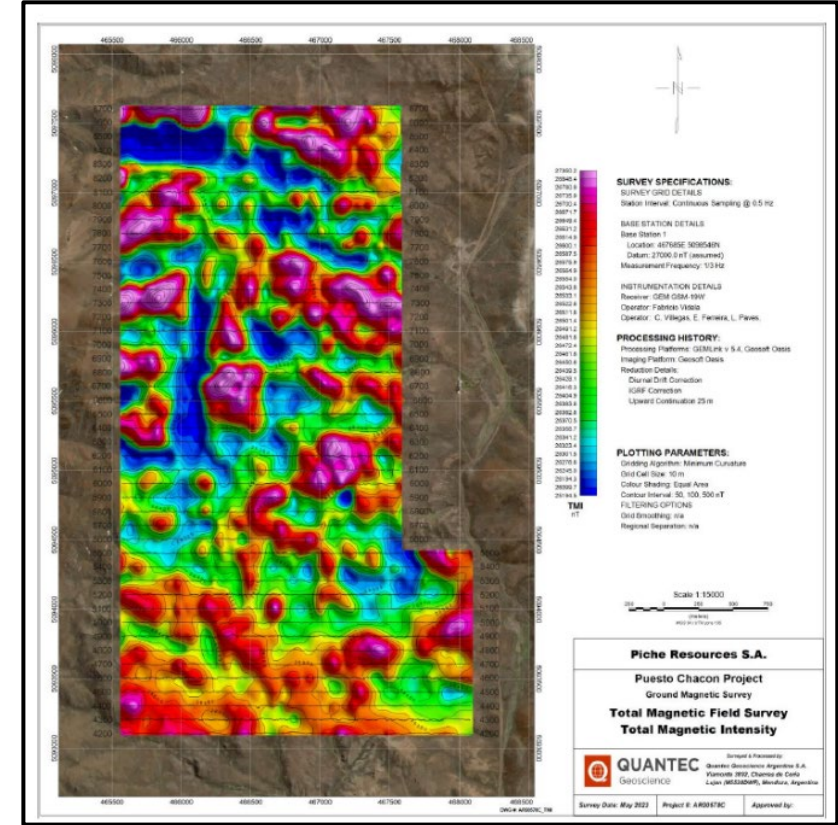
# CERRO CHACON PROJECT - GOLD - ARGENTINA



- Mapping and sampling at the La Javelia prospect has identified extensive brecciated low sulphidation epithermal Au/Ag vein systems
- Detailed ground magnetic and IP surveys have highlighted five first tier drill targets
- Comprehensive follow-up surface surveys and interpretation of the data for drill planning is underway



La Javelia prospect – magnetic and IP surveys



La Javelia prospect has multiple high priority outcropping gold/silver drill targets





# Corporate matters

---



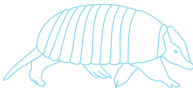
# WORK PROGRAM

	Jul 2024	Aug 2024	Sep 2024	Oct 2024	Nov 2024	Dec 2024	Q3 25	Q4 25	Q1 26	Q2 26
<b>Uranium Work Program</b>										
<b>Ashburton</b>										
Environmental approvals										
Land access										
Geophysics										
RC drilling										
Diamond										
<i>Results and market announcement</i>										
Follow up exploration campaign										
<b>Sierra Cuadrada</b>										
Environmental approvals										
Land access										
Geophysics										
Trenching										
Auger drilling										
<i>Results and market announcement</i>										
Follow up exploration campaign										
<b>Other Uranium Projects (Gascoyne)</b>										



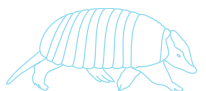
# WORK PROGRAM

	Jul 2024	Aug 2024	Sep 2024	Oct 2024	Nov 2024	Dec 2024	Q3 25	Q4 25	Q1 26	Q2 26
Gold Work Program										
Cerro Chacon										
Environmental approvals										
Land access										
Geophysics										
RC drilling										
Diamond										
Results and market announcement										
Follow up exploration campaign										
Other non-Uranium Projects (Abydos, Beasley Creek)										



## INVESTMENT OPPORTUNITY

- 1 A suite of high-quality uranium and gold assets in a new ASX listed company
- 2 Assets with up to 40 years of exploration history resulting in high confidence, drill ready exploration targets
- 3 Multiple styles of mineralisation across two attractive mining jurisdictions – Western Australia and Argentina
- 4 Strong board and management team with proven uranium and gold exploration and development experience
- 5 Strong broker and shareholder support
- 6 At an Enterprise value of \$5.9m Piche is an undervalued uranium play in the market



## Contact details:

---

John (Gus) Simpson  
Executive Chairman  
Piche Resources Limited  
+61414384220  
[js@piche.com.au](mailto:js@piche.com.au)

This presentation has been approved for release by the Executive Chairman





# Appendices

---

REE Project



# ASHBURTON PROJECT - REE - AUSTRALIA

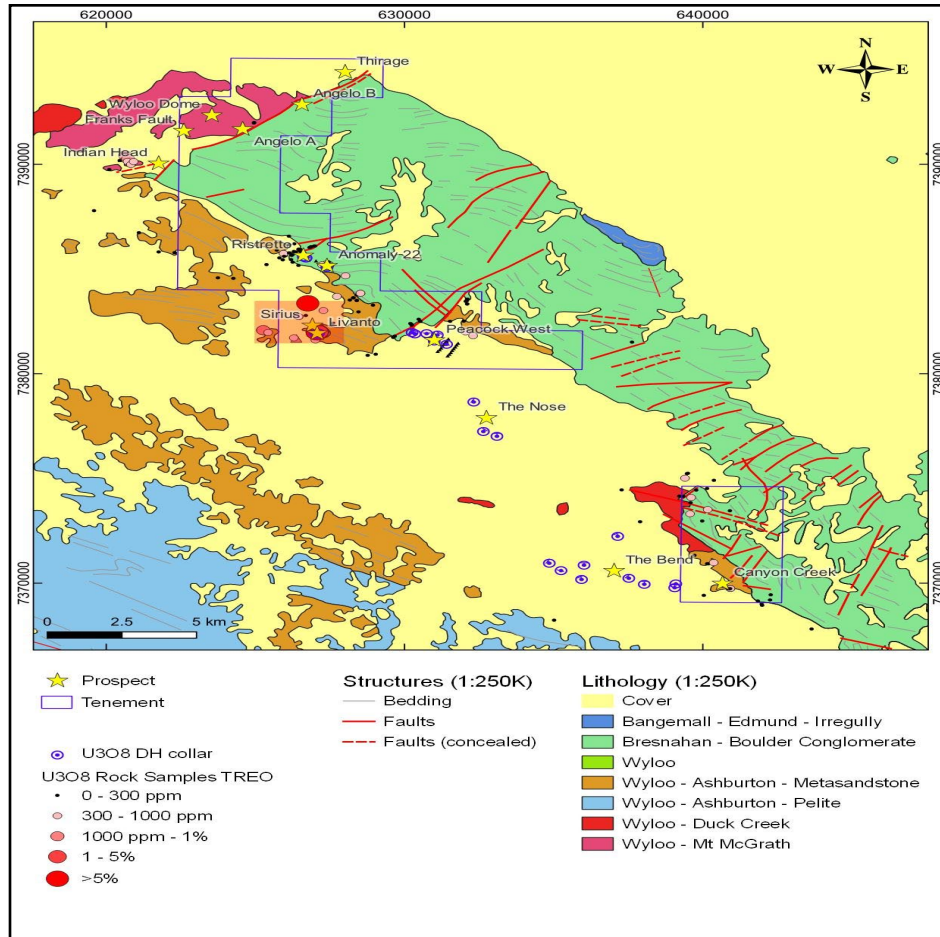


Figure 10: Geology and tenement schematic of the Piche Resources Ashburton REE Projects

Rock chip sampling of radiometric anomalies over a 350m x 200m area at the Livanto prospect returned very high grade REE

Including all four super magnet elements:

- Cerium to 3.73%
- Lanthanum to 1.75%
- Yttrium to 1.20%
- **Praseodymium to 0.98%**
- **Neodymium to 4.18%**
- **Dysprosium to 0.34%**
- **Terbium to 819 ppm**

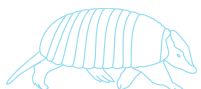
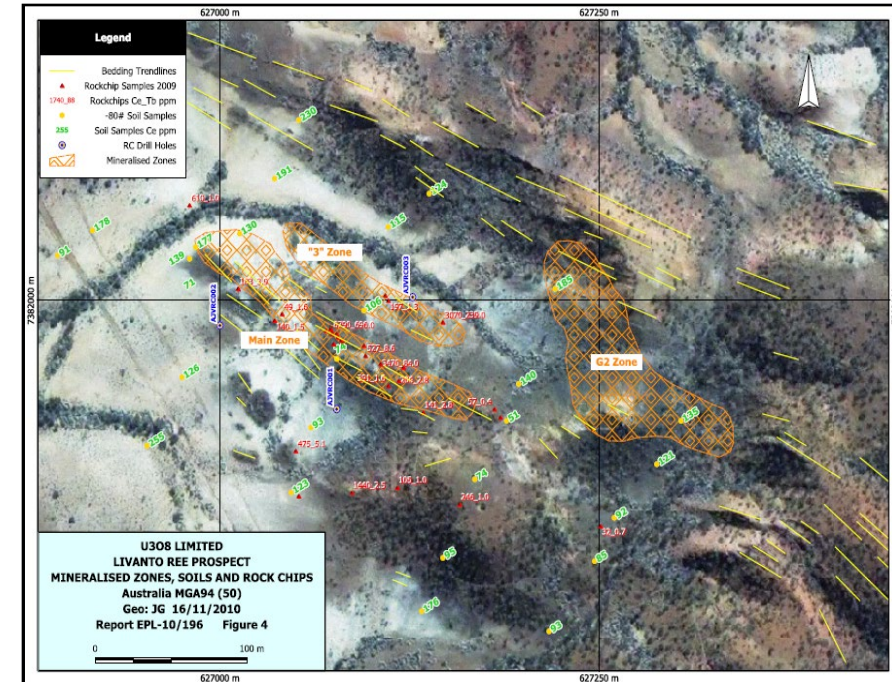
Results of the geochemistry include assay values 11.38% total rare earth oxides (TREO)

- 26 samples included TREO >0.2%
- 9 samples included TREO assays >1.0%

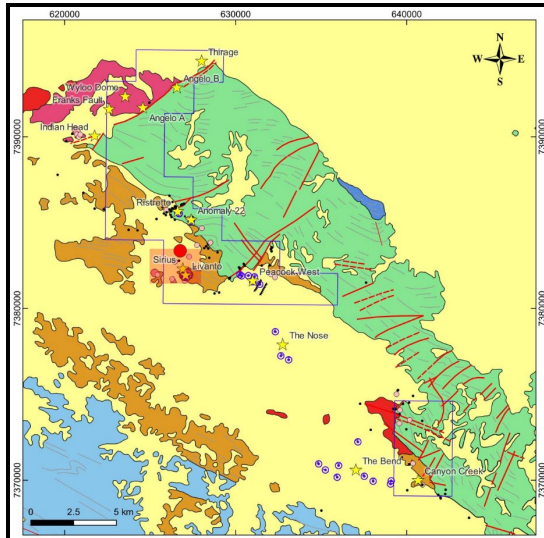
Regional mapping and sampling has extended the target area to 15km in length

The REE mix in the rock samples is dominated by

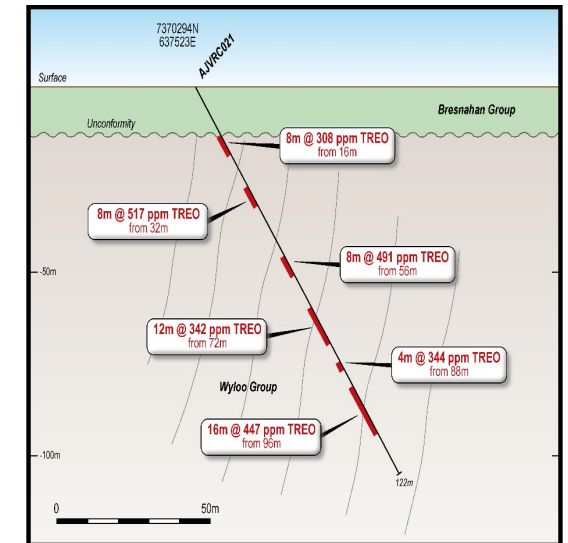
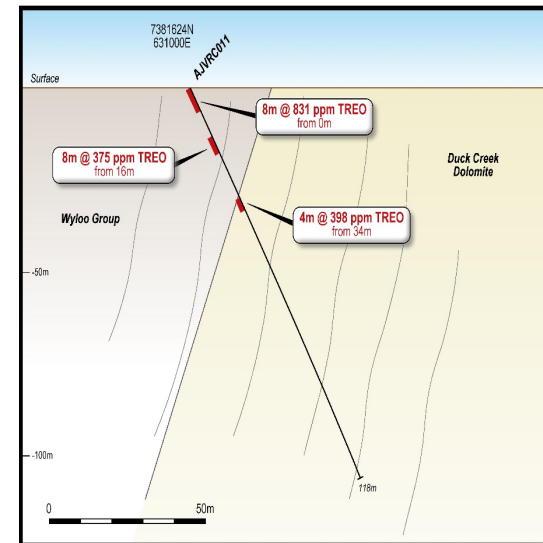
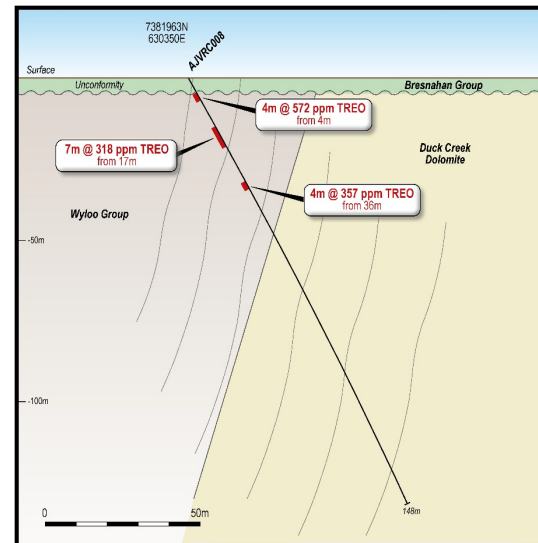
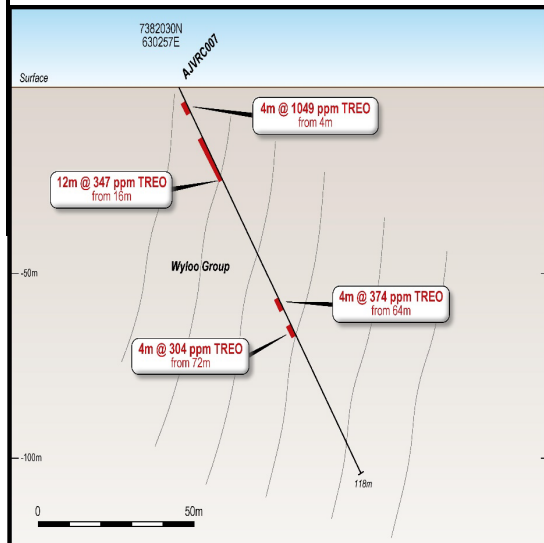
- "Middle" REEs - Pr, Eu, Gd, Nd, Sm, which make up 59% of the total REEs and
- "Heavy" REEs - Tb, Dy, Ho, Er, Tm, Yb, Lu account for 7% of the total REEs



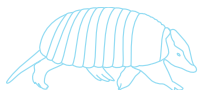
# ASHBURTON PROJECT - REE - AUSTRALIA



- Indian Head thru Peacock West and Canyon Creek REE prospects co-reside in or near the Ashburton exploration licenses covering approx. 122km<sup>2</sup>
- In 2010 a twenty-one-hole uranium drill program was completed between Indian Head and Canyon Creek and was assayed for both uranium and REE
- The results returned 10 holes each with several anomalous TREO results above 300ppm to a maximum of 2768ppm
- Best drilling results included:
  - AJVRC007 4m @ 1047ppm TREO from 4m, including 1m @ 2768ppm TREO
  - AJVRC011 4m @ 1259ppm TREO from 0m and
  - AJVRC016 34m @ 560ppm TREO from 32m
- Drillhole results at 6 prospects suggest the REE mineralisation is associated with 15 km of basement metasandstone strike from Indian Head SW through to Peacock West
- Significant TREO mineralisation in the drillholes 007, 008 and 011 occur at Peacock West along strike, at varying stratigraphic levels and widths
- Drillhole 016 and 021 was part of the original drill program and tenements but now lie along strike between the existing tenements



This historic drilling indicates the presence of REE over 15 km of strike length. REE assaying is planned for all proposed uranium exploration programs



# ARGENTINA

Top global mining companies operating in Argentina<sup>2</sup>

