



Advancing a truly clean energy minerals and metals odyssey

CORPORATE
PRESENTATION

WHITE CLIFF
MINERALS

ASX: WCN

IMPORTANT NOTICE & DISCLAIMER



The information contained in this presentation has been prepared by White Cliff Minerals Limited (the Company).

To the maximum extent permitted by law, the Company and its related bodies corporate, affiliates and each of their respective directors, officers, partners, employees, advisers and agents and any other person involved in the preparation of the presentation disclaim all liability and responsibility (including without limitation any liability arising from fault or negligence) for any direct or indirect loss or damage which may arise or be suffered through use or reliance on anything contained in, or omitted from, the presentation.

No representation or warranty, express or implied, is given as to the fairness, accuracy, completeness, likelihood of achievement or reasonableness of any assumptions, forecasts, prospective statements or returns contained in the presentation. Such assumptions, forecasts, prospective statements or returns are by their nature subject to significant uncertainties and contingencies, have been based on current expectations about future events and are subject to risks, uncertainties and assumptions that could cause actual results to differ materially from the expectations described. The Company has no responsibility or obligation to inform you of any matter arising or coming to its notice, after the date of this presentation document, which may affect any matter referred to in the presentation.

All statements other than statements of historical fact included in this presentation including, without limitation, statements regarding future plans and objectives of White Cliff, are forward-looking statements. Forward-looking statements can be identified by words such as "anticipate", "believe", "could", "estimate", "expect", "future", "intend", "may", "opportunity", "plan", "potential", "project", "seek", "will" and other similar words that involve risks and uncertainties. These statements are based on an assessment of present economic and operating conditions, and on a number of assumptions regarding future events and actions that are expected to take place. Such forward-looking statements are not guarantees of future performance and involve known and unknown risks, uncertainties, assumptions and other important factors, many of which are beyond the control of the Company, its directors and the management of White Cliff that could cause the Company's actual results to differ materially from the results expressed or anticipated in these statements.

White Cliff cannot and does not give any assurance that the results, performance or achievements expressed or implied by the forward-looking statements contained in this presentation will actually occur and investors are cautioned not to place any reliance on these forward-looking statements. The Company does not undertake to update or revise forward-looking statements, or to publish prospective financial information in the future, regardless of whether new information, future events or any other factors affect the information contained in this presentation, except where required by applicable law and stock exchange listing requirements.

You must not rely on the presentation provided but make your own independent assessment of the presentation and seek and rely upon your own independent taxation, legal, financial or other professional advice in relation to the presentation and any action taken on the basis of the presentation. All information in this presentation is current as at 5 November 2024.

CORPORATE OVERVIEW



CAPITALISATION DATA¹

A\$0.019

Share Price A\$

1,890M

Basic S/O

A\$35.9M

Market Cap

A\$5.45M²

Cash

A\$29.6M³

Enterprise Value

BOARD & EXECUTIVE

Rod McIlree

EXECUTIVE CHAIRMAN

Rod is an Australian geologist with extensive experience in developing large-scale projects. With extensive knowledge in M&A, international logistics and small-cap fundraisings, he provides the leadership for this new phase of growth of the company

Eric Sondergaard

EXECUTIVE DIRECTOR

Eric is a registered Professional Geoscientist and a graduate of the University of Calgary in Canada. Eric brings over 20 years of operational experience in the mining industry, including significant expertise in frontier exploration and project management.

Troy Whittaker

MANAGING DIRECTOR

Troy is an executive with more than 20 years of experience, spanning successful international project evaluation activities, and the development and operation of multibillion dollar assets globally across a broad range of commodities

Dan Smith

NON-EXECUTIVE DIRECTOR

Dan has over 15 years primary and secondary capital markets expertise, and has advised on, and been involved in, a number of IPOs, RTOs and capital raisings on the ASX, NSX and AIM markets

WCN SHARE PRICE



SHAREHOLDER INFO

Top 20	32.96%
Board & Management ⁴	17.73%
# of Shareholders	3,065

WCN 52W PERFORMANCE

52w high	\$0.029
52w low	\$0.009
Average Volume	6.97m/day

¹ as at 5 November 2024

² as at 5 November 2024

³ after cash and liquid instruments

⁴ includes strategic advisors

INVESTOR HIGHLIGHTS



FUTURE FACING METALS

White Cliff has an **in-demand**, diversified Energy Metals portfolio featuring **uranium** (U), **copper** (Cu), **gold** (Au) and **silver** (Ag).



TIER 1 JURISDICTIONS

The Company has ground in Western Australia and Canada, both **supportive jurisdictions** with enabling regulatory frameworks for exploration and development.



SECURE FINANCIAL POSITION

We have **no debt** and about A\$6.35m million in cash and listed investments¹.



PROGRESS

Our strategy in Canada for **uranium, copper, gold** and **silver**, complimenting the ongoing field work in Western Australia will provide **strong and ongoing news flow**.



ESG

We have demonstrated **commitment** to **responsible resource development**.



COMMITTED BOARD & MANAGEMENT

The company has the **right-sized** team, with the right expertise and experience and **demonstrated skin in the game** having purchased **~A\$3.7m on market and in placements** over the previous 12 months

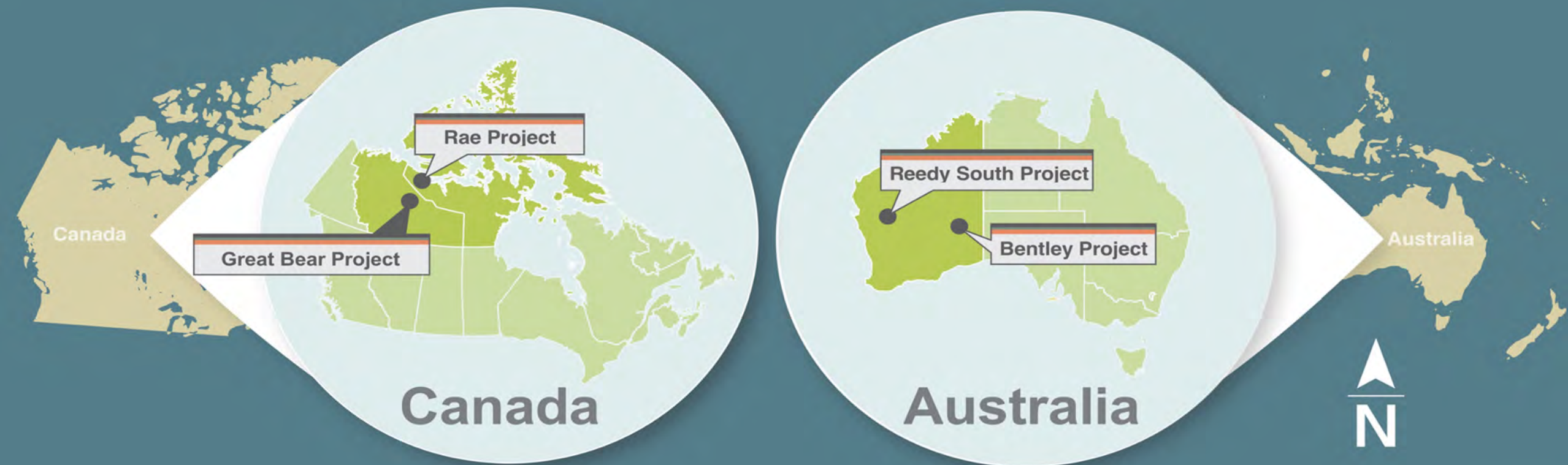
¹ as at 5 November 2024, includes sales of Yinnetharra project to Minerals 260 (ASX: MI6) for 7 million shares (see announcement: 27 March 2023)

NEW EXEC MANAGEMENT

NEW COMMODITIES, NEW JURISTITION



OUR PROJECTS



CANADA INVESTMENT HIGHLIGHTS



Large, high-grade and scalable projects **secured** in **historic** and **proven** areas



Modern exploration techniques positions us to **unlock untapped opportunity**



Significant historical databases and information allow targeted **fast tracked on-ground exploration activities**



Canadian Government provides **numerous initiatives** to **support** the **critical minerals industry**¹

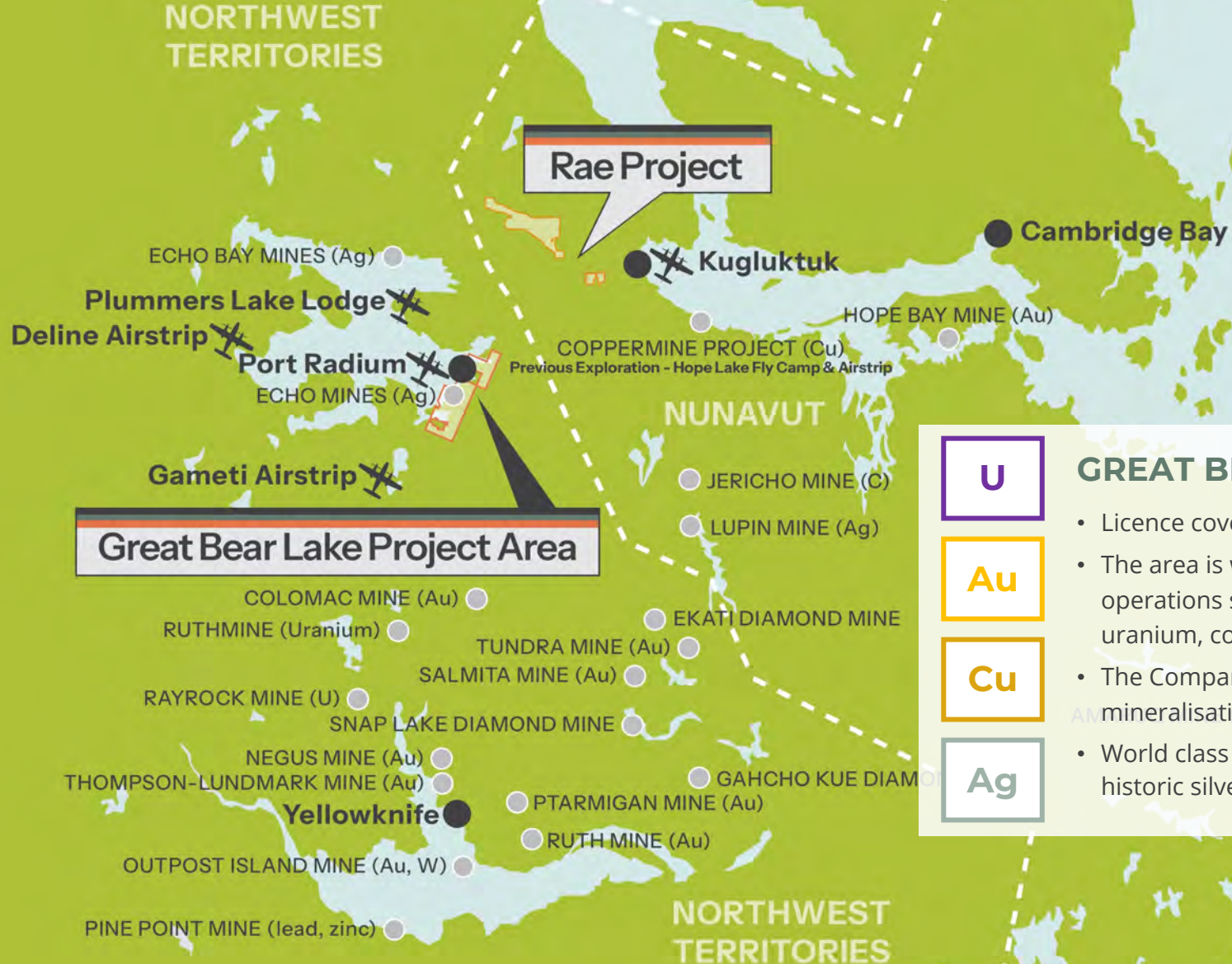


Leveraging **the Clean Energy Revolution** with the right commodity basket



¹ See ASX Announcement - 10 July "IOCG & epithermal mineralisation discovered in maiden field program at Great Bear Project & Canadian Government Grants received to further exploration"

CANADA LOCATIONS



Cu

RAE COPPER-SILVER

- Licence area totals 1,198km², in Nunavut
- Area contains >72km of Rae Group sediments - the potential host of "reduced-facies" sedimentary copper
- Extraordinarily high-grade copper grades reported from assays during 2024 maiden field campaign
- District scale geophysical conductive anomalies identified
- Drilling planned for 2025

Ag

U

GREAT BEAR LAKE URANIUM-COPPER-GOLD-SILVER

- Licence covers an area that exceeds 2,900km² in the Northwest Territories
- The area is within the immediate proximity of significant historical mining operations such as the Eldorado, Echo Bay, Contact Lake mines that produced uranium, copper, gold & silver
- The Company's recent exploration works demonstrated high grade mineralisation at surface
- World class prospective silver district identified within close proximity to the historic silver mines of Bonanza and El Bonanza

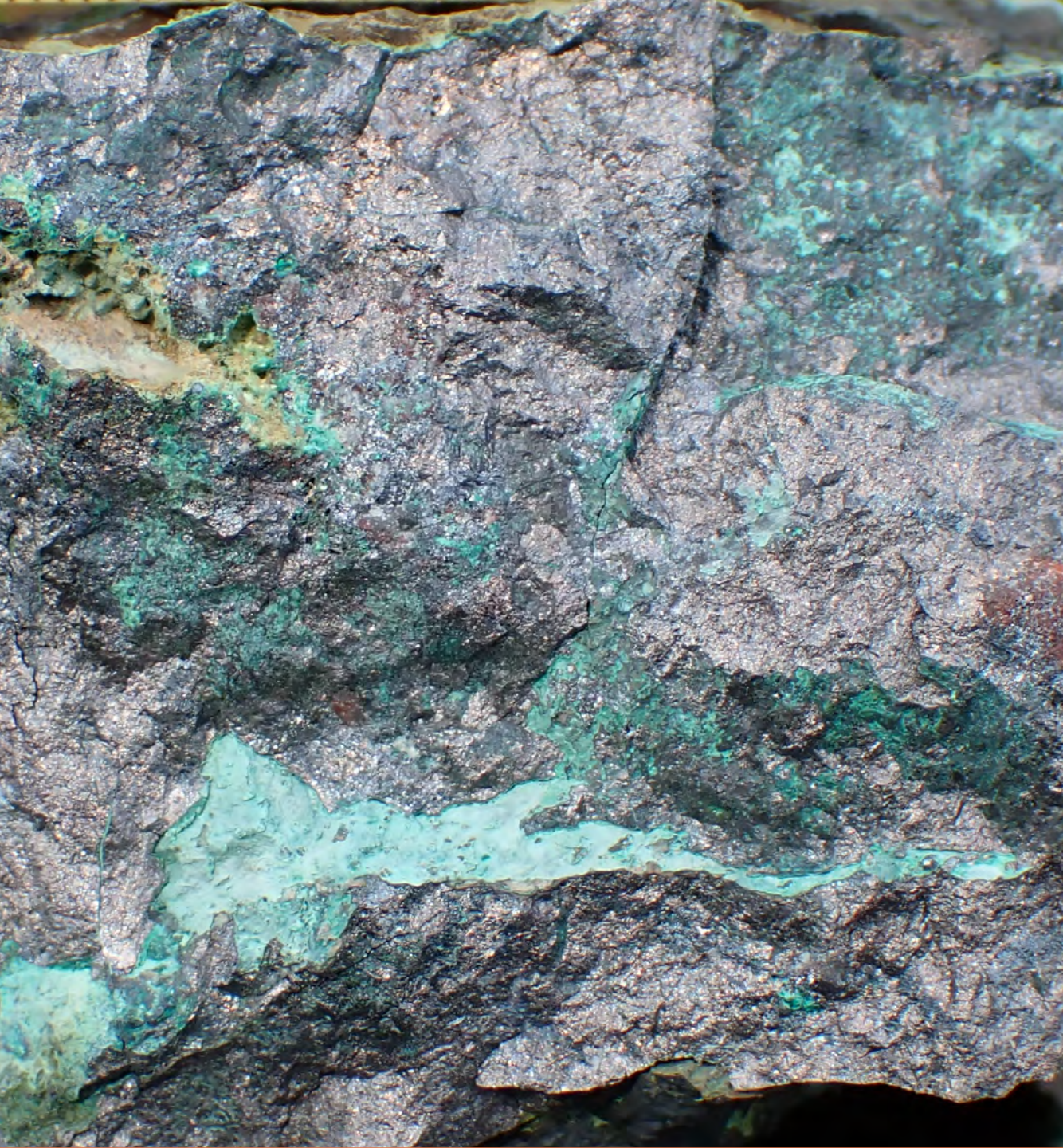
Au

Cu

Ag

200km

WHITE CLIFF MINERALS (ASX: WCN)



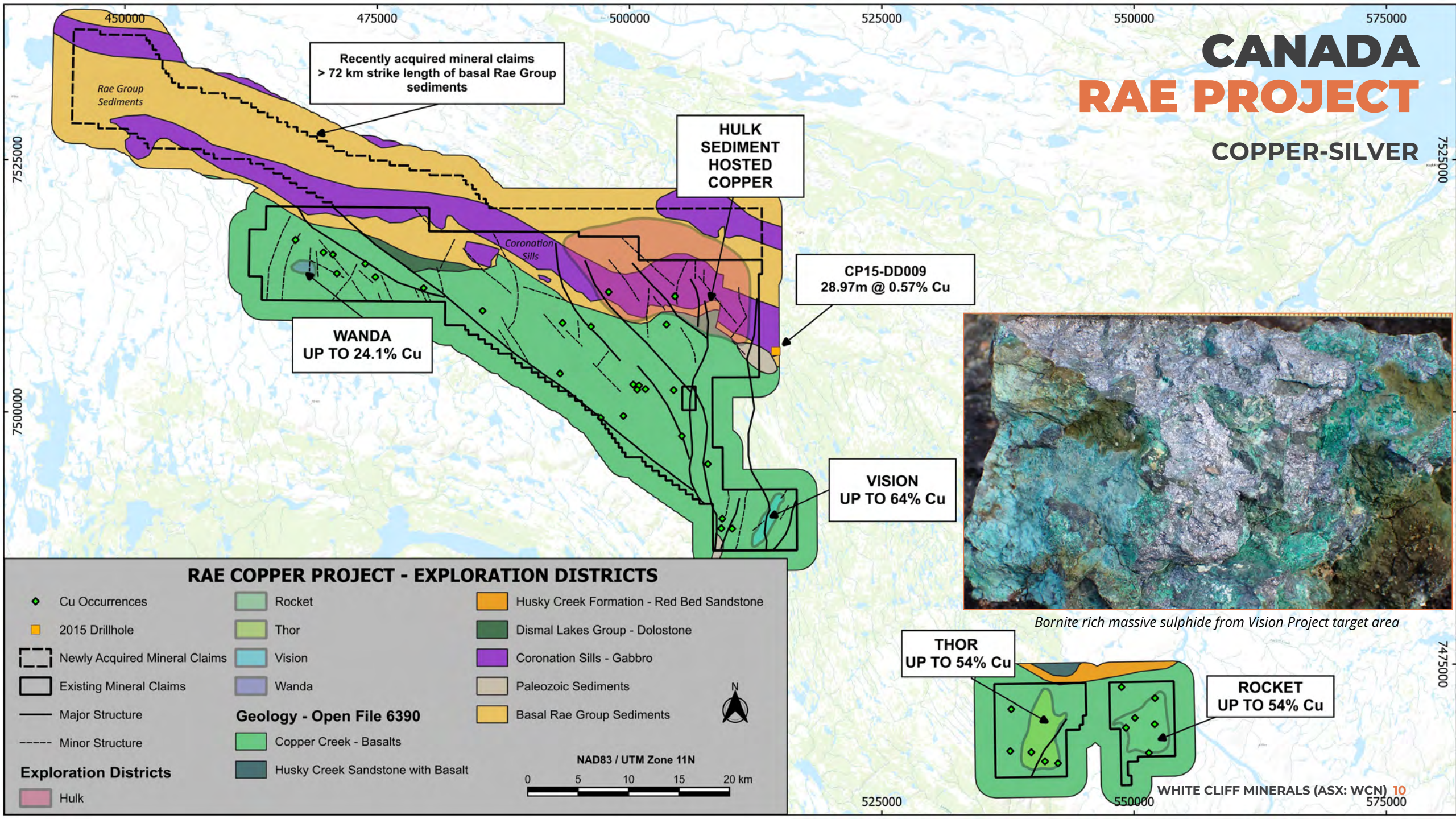
Rae Cu-Ag Project

Nunavut, Canada

CANADA

RAE PROJECT

COPPER-SILVER



2024 Field Campaign¹

- Large scale copper discovery confirmed
- Multiple high-grade copper vein systems identified
- **Vision** - a ± 10 km long NE/SW structural corridor, feeding from the Herb Dixon regional fault covering the Don and Pat project areas; results include:
 - Don: **64.02% Cu & 152 g/t Ag, 62.02% & 162 g/t Ag and 50.48% Cu & 102 g/t Ag.**
 - Pat: **55.01% Cu, 46.07% Cu, 44.43% Cu and 43.10% Cu**
- **Rocket** - an area ± 400 m x 200m containing dominant chalcocite vein systems: **54.12% Cu, 53.82% Cu, 53.47% Cu, 53.24% Cu and 51.59% Cu**
- **Thor** - host to the historic HALO occurrence, >800mtrs of outcropping mineralization identified: **54.02% Cu, 25.7% Cu, 24.4% Cu and 24.41% Cu**



Sample F005965 which returned 64.02% Cu and 152g/t Ag from the DON target

¹ See ASX Announcements - 4 October 2024 "Large Scale Copper Discovery Confirmed at Rae Project" and 14 October 2024 "High Grade Copper Results Continue at Rae"

Sedimentary Hosted Copper

- **All first-order controls** for a sediment-hosted copper deposit - with a **proof-of-concept historic drilling result**
- **Right time, right place:** Proterozoic Era basins host some of the largest sediment hosted copper deposits
- **Well-endowed district:** Evidence of copper-fertile hydrothermal fluids is present throughout the project, evidenced by the numerous volcanic hosted showings
- **Optionality:** High grade volcanic hosted vein and breccia systems with sediment hosted copper potential offers pipeline of drill targets



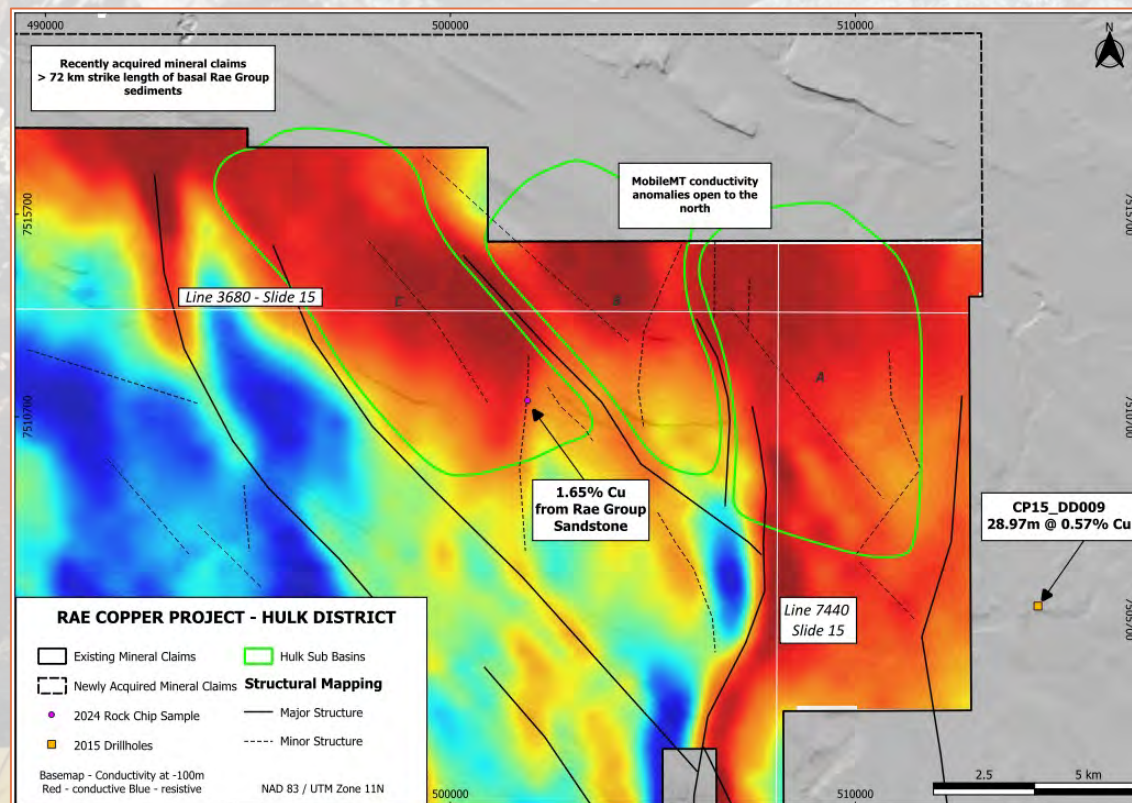
Town and Port of Kugluktuk, only 70km from the Rae Copper-Silver Project



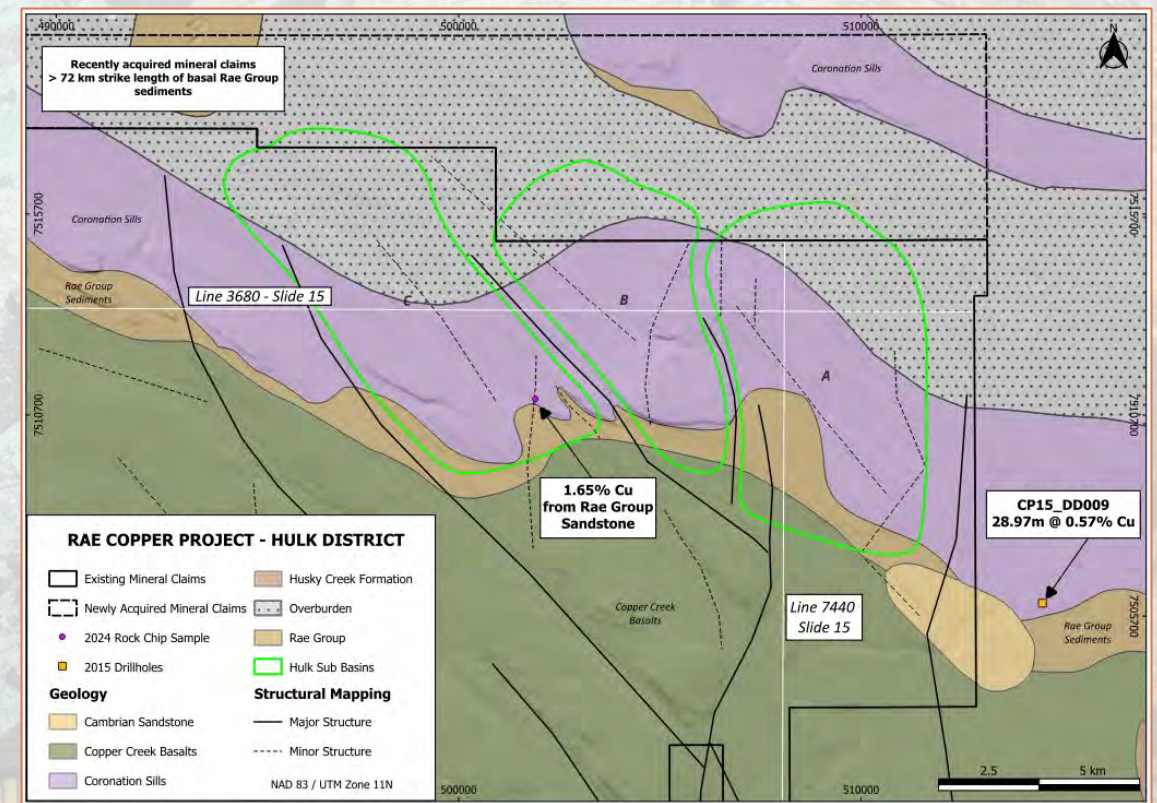
Copper rich rock sample from Quartz sandstone at the Hulk Target

Hulk - a district scale conductive anomaly¹

- Three, fault controlled, sub basins covering > 20km of strike across the Rae Group sediments within the Hulk target area



Conductivity response within the Hulk target. Elevated conductivity is observed across km's within the Rae Group sediments, & remains open to the north into the newly acquired mineral claims

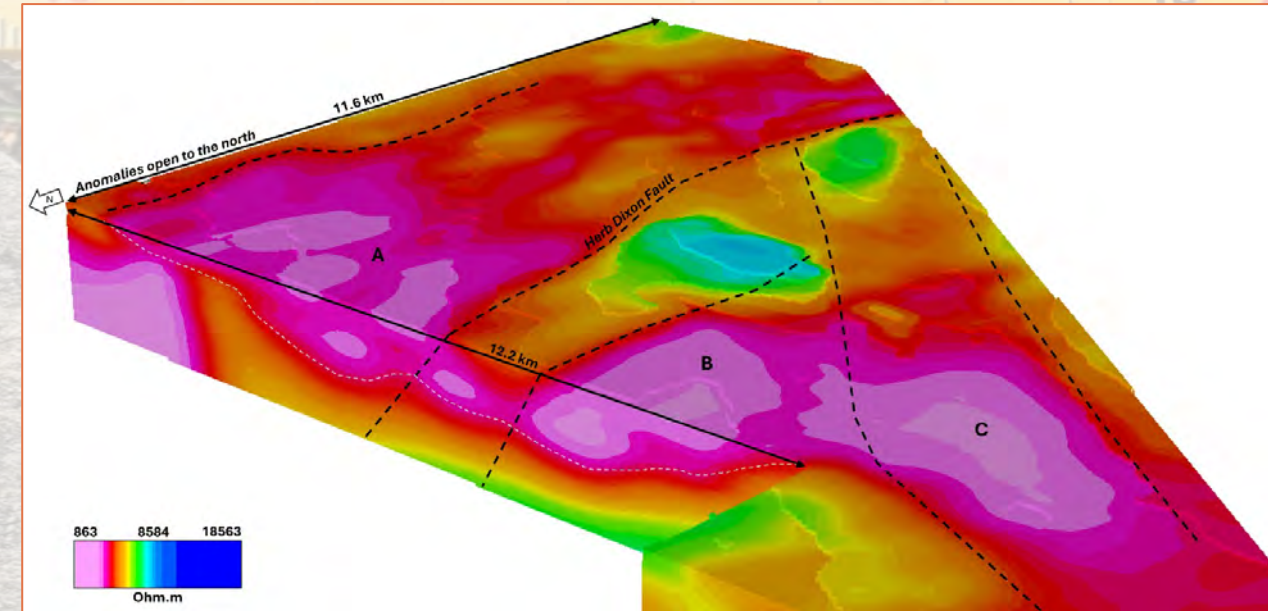


The Hulk District, covering 152 km² and comprised of 3 sub basins. Major structures are shown which separates the basins.

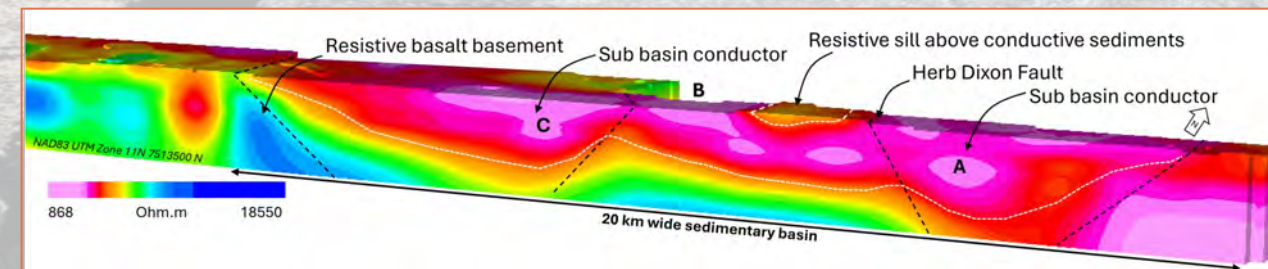
¹ See ASX Announcement - 29 October 2024 "Multiple conductive anomalies identified at Hulk"

Hulk - 3 distinct fault bounded sub-basins¹

- **Hulk East, Area-A:**
 - <2km west of historic drill intercept through Rae group sediments - 0.57% Cu over 28.97m and included 1m @ 3.0%, 2.6m @ 1.6%, and 6m @ 1.1% Cu:
 - area is bounded by 2 major N/S trending faults, including the regional Herb Dixon fault - a known copper conduit
- **Hulk Central, Area-B:**
 - fault-controlled target, sitting on east of the Herb Dixon fault
- **Hulk West, Area-C:**
 - sits within the bounds of two major NW/SE faults and contains intersecting NW/SE and N/S structures, providing a controlled boundary around the sedimentary basin
- **Anomalies open to the north** – recently acquired ground



View from the northwest of the Company's claims, looking southeast through the Hulk target

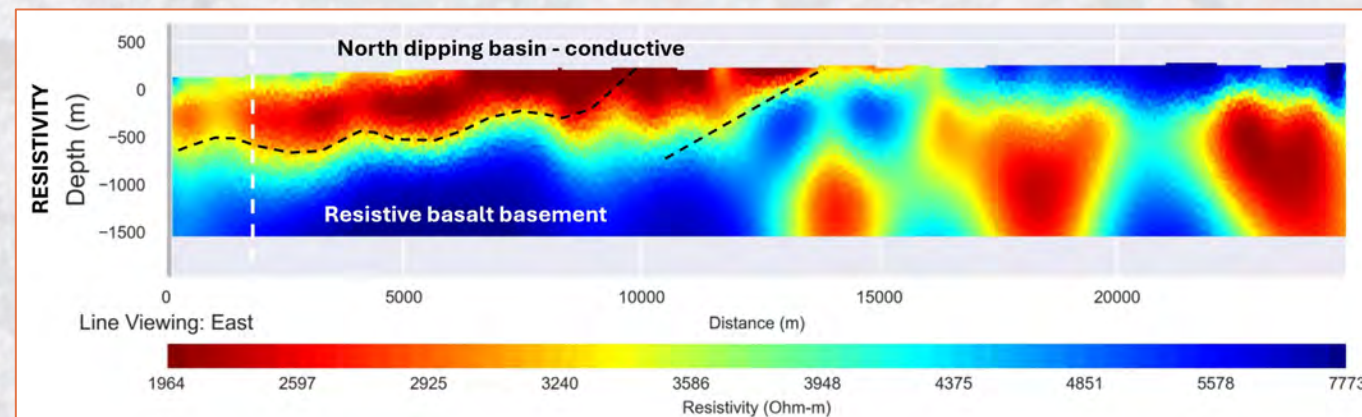


View looking north, slice through the resistivity voxel illustrating the interpreted sub basin architecture at the Hulk exploration district. Voxel is sliced E/W through a northing of 7513500 NAD83 / UTM Zone 11N

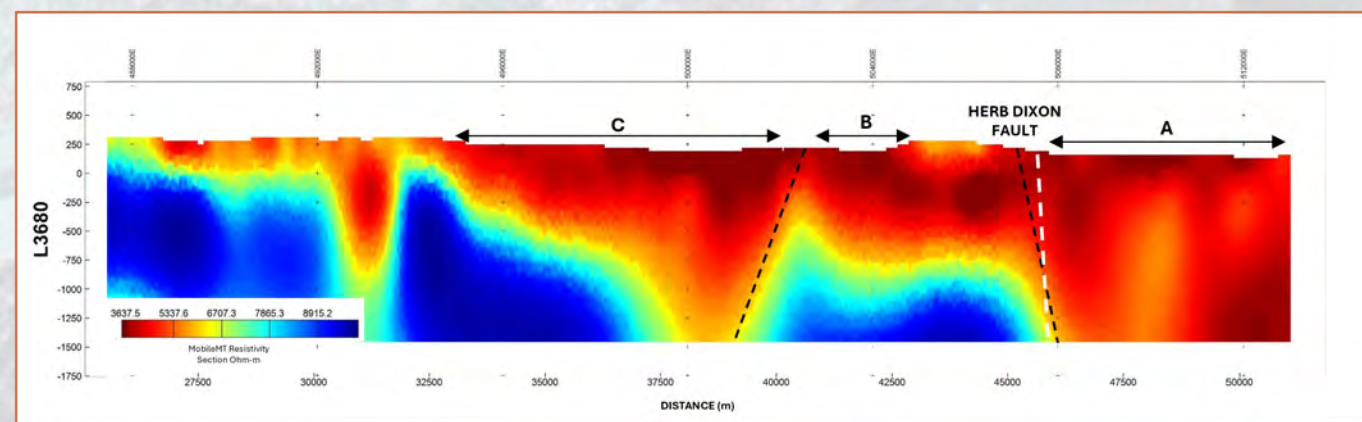
¹ See ASX Announcement – 29 October 2024 “Multiple conductive anomalies identified at Hulk”

Hulk - all the right ingredients¹

- Herb Dixon fault: a major, regional N/S fault that intersects the Hulk area. It can be traced to the Vision target where assays from rock chips included results of **64.02%, 62.02%, 55.01% and 50.48% Cu**
- Conductive response represents a sedimentary hosted copper target overlying a resistive basement of the Copper Creek Basalts
- Orientation of conductive interval matches the gently north dipping sedimentary package observed in the field
- Highest conductivity intervals within the sediments appear proximal to major structures, interpreted as possible feeders for copper bearing fluids



Inverted conductivity section along line 7740 (N/S), looking East through the basalt-sediment contact. A gently north dipping conductive zone over >10km, is observed through the sub basin



Inverted conductivity section through the 3 targets at Hulk, looking North. Conductive signatures can be observed within the sediments of the Rae Group, especially in the interpreted hanging walls of structures.

¹ See ASX Announcement – 29 October 2024 “Multiple conductive anomalies identified at Hulk”



Great Bear Cu-Au-Ag-U Project

North-West Territories, Canada

CANADA

GREAT BEAR PROJECT

COPPER-GOLD-SILVER-URANIUM

- A **historic** and **proven** area¹
- Identified as having Canada's **highest probability** for the hosting of **iron-oxide-copper-gold uranium** plus **silver**-style mineralisation in the Country
- Recognised as one of Canada's **largest uranium mining** districts
- Total historical production across the area (pre-1982) was:
 - **13,700,000 pounds** of **uranium oxide** (U_3O_8)
 - **34,300,000 ounces** of refined **silver**
 - **11,377,040lbs** of **copper** with **gold** credits, and
 - 127,000 kilograms of **nickel**, 227,000kg of **cobalt** and 104,000kg **lead**
- Historical focus on U, Ag overlooked **significant Cu and Au potential**



Great Bear Lake Project overview, showing access and settlements

¹ See ASX Announcement - 15 January 2024 "Large Scale Uranium Project Secured in Canada"

CANADA GREAT BEAR PROJECT

COPPER-GOLD-SILVER-URANIUM



Great Bear Magmatic Zone

- Hosts a spectrum of mineralization styles within the broad IOCG hydrothermal model
 - **Epithermal** - Ag, Au, Cu, U,
 - **Skarn** - Ag, Cu, Mo, Pb, Zn, W
 - **IOCG** - Au, Ag, Co, Cu, +/- U
- **Untapped Potential** - Copper and gold were never the focus of historic exploration work
- **Historic Data** - A wealth of data, that until now has never been fully integrated into GIS
- **Recent Publications** – Academic work on the Great Bear Magmatic Zone has brought a new understanding to the region, making comparisons to other global world class IOCG districts

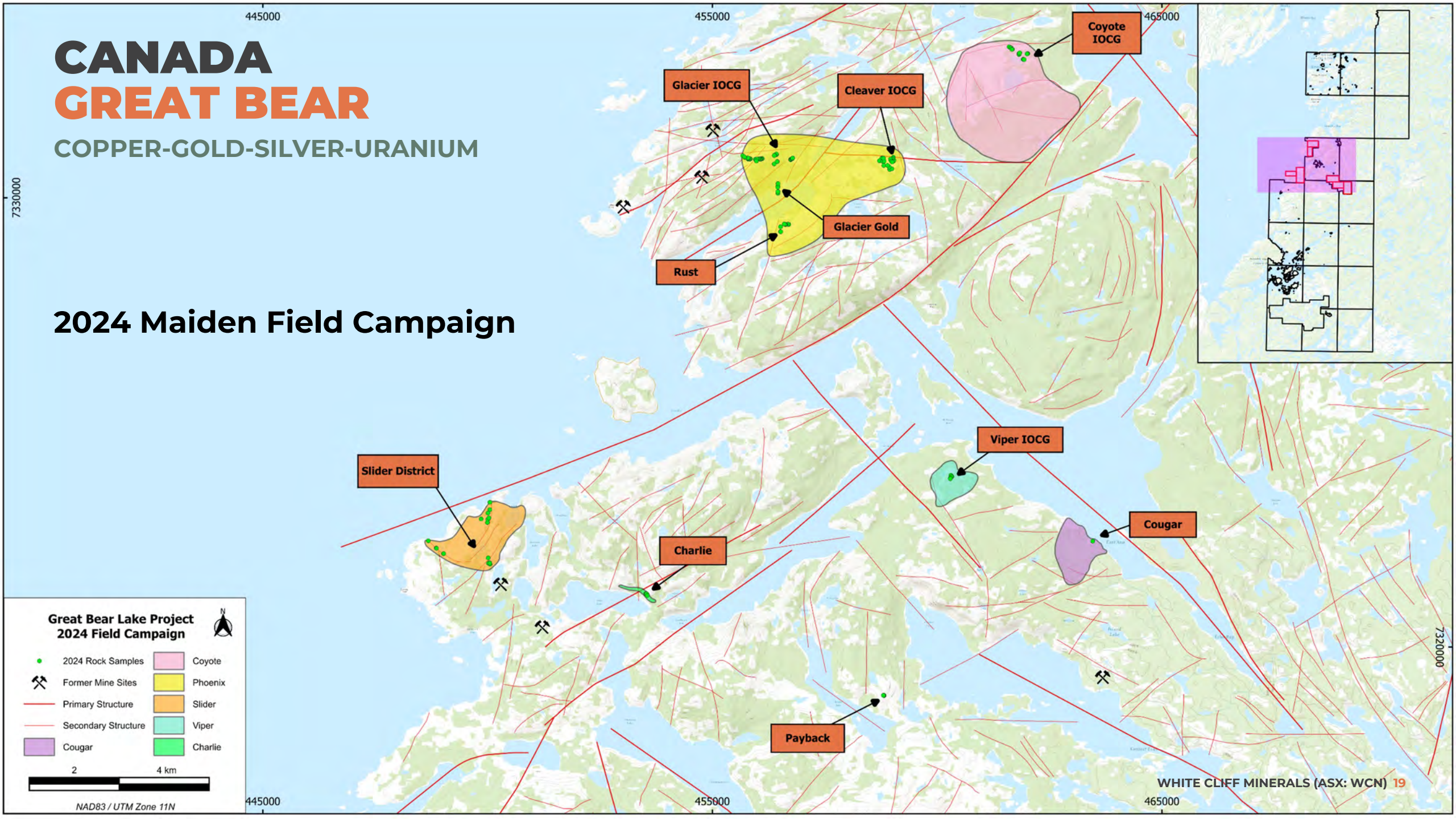


Sample F005909 from Slider which returned 5.35% Ag

CANADA GREAT BEAR

COPPER-GOLD-SILVER-URANIUM

2024 Maiden Field Campaign



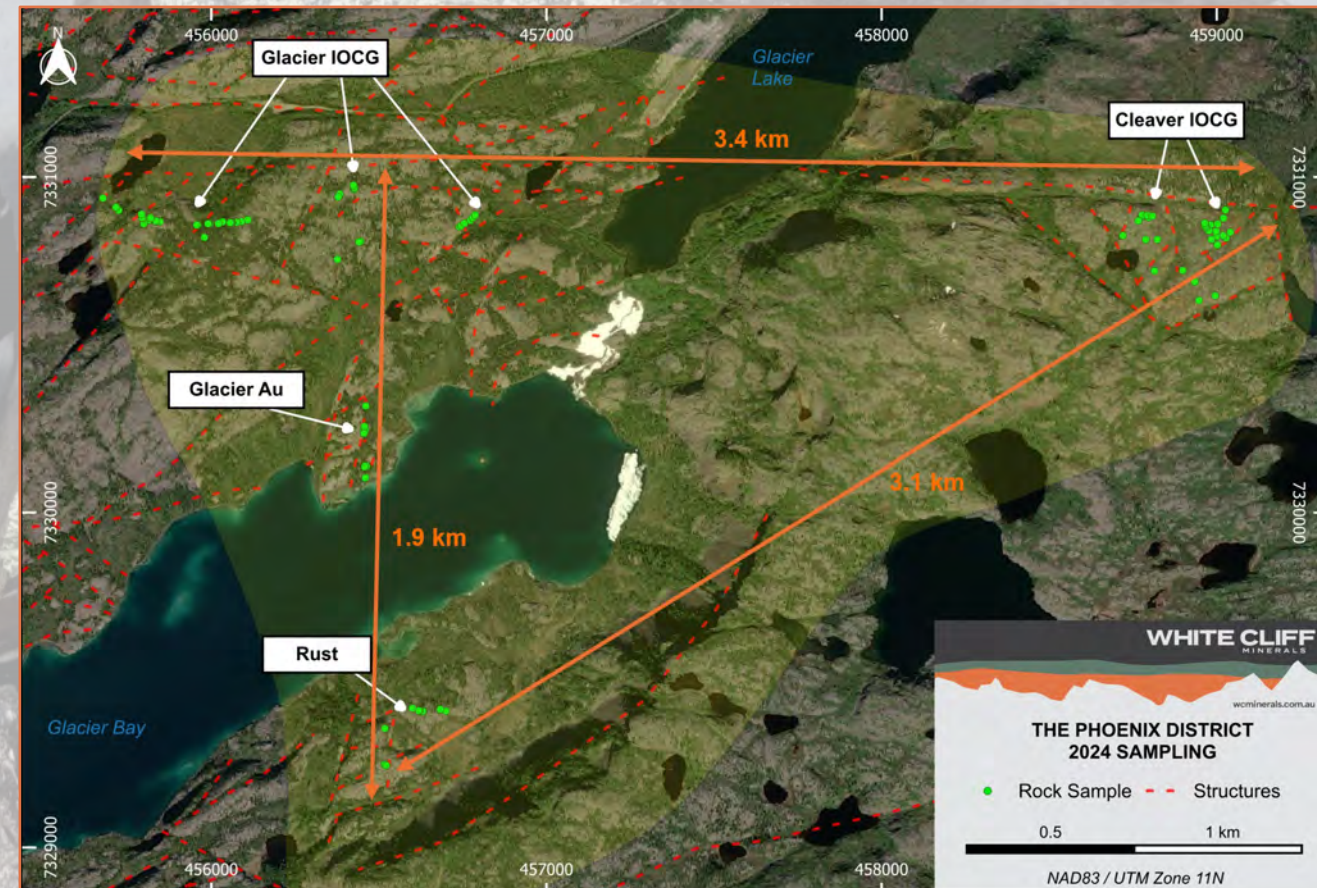
CANADA GREAT BEAR PROJECT

COPPER-GOLD-SILVER-URANIUM



Phoenix¹

- Close proximity to existing logistics infrastructure
- District scale, mineralized region along a major E/W fault
- Located only a kilometer east from the historic Eldorado & Echo Bay mines.
- 2024 maiden campaign -delivered high grade **Copper, Gold & Silver**:
 - **42.60% Cu, 2.28g/t Au & 159g/t Ag** (F005437)
 - **39.50% Cu, 3.54g/t Au & 181g/t Ag** (F005436)
 - **39.50% Cu, 2.28g/t Au & 131g/t Ag** (F005435)
 - **6.31% Cu, 28.2 g/t Ag & 0.468 g/t Au** (F005688)
 - **249 g/t Ag, 3.00% Cu & 0.717 g/t Au** (F005646)
 - **38.2g/t Au, 76.5g/t Ag, 4.16% Cu** (F005424)
 - **29.7g/t Au, 121g/t Ag, 2.55% Cu** (F005426)

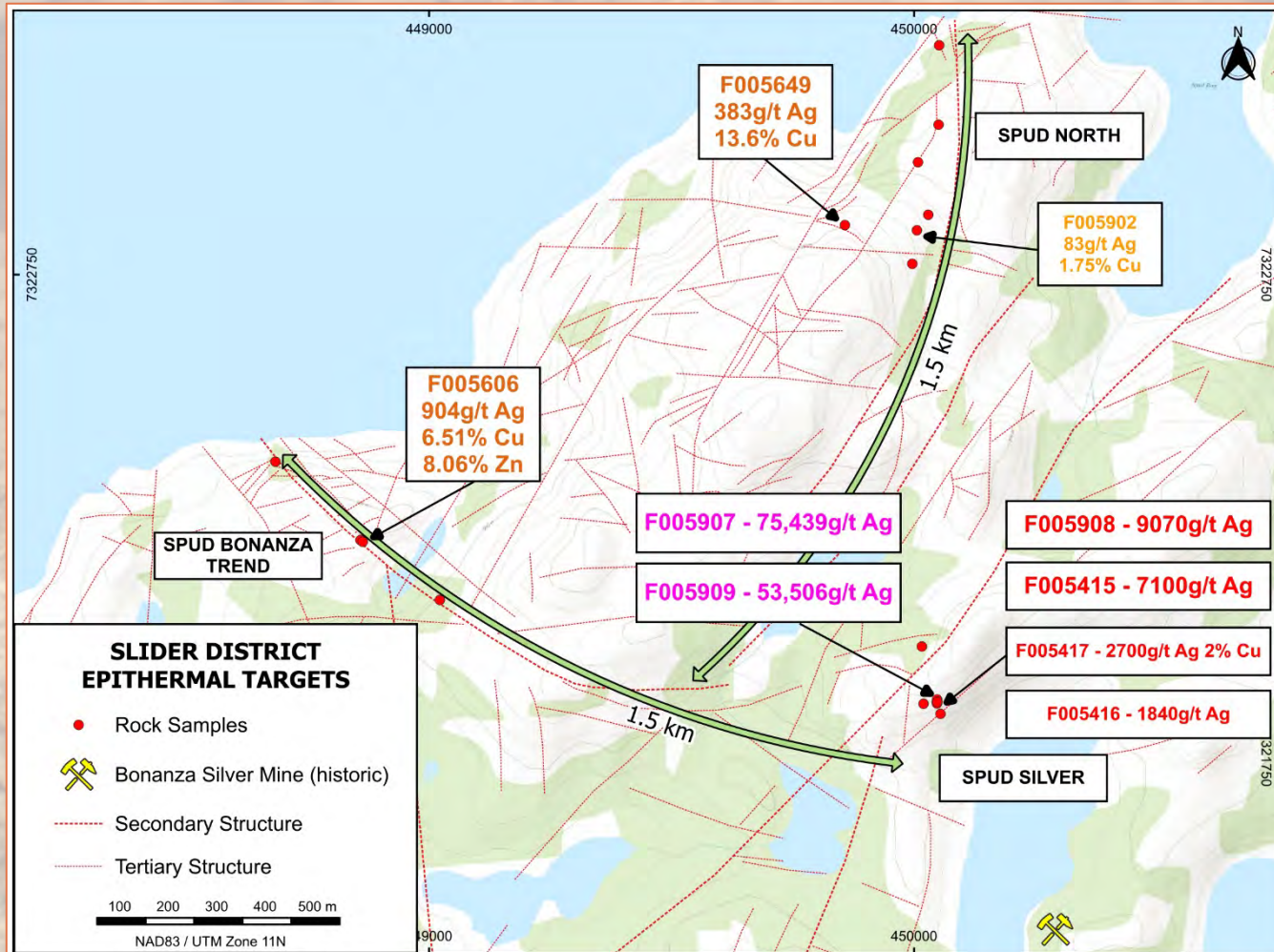


Phoenix: A 3.4km E/W & 1.9km N/S region with extensive IOCG, epithermal and phyllic characteristics identified throughout the strike

¹ See ASX Announcement - 13 August 2024 "Extraordinary grade Copper, Gold & Silver assays received"

CANADA GREAT BEAR PROJECT

COPPER-GOLD-SILVER-URANIUM



Map of the Slider District - 2024 rock samples which exhibit bonanza silver grades.

Slider¹

- A genuine, high grade, major silver discovery just 530m NW of the Silver Mines that produced 34,300,000oz of refined Silver
- 2024 maiden campaign -delivered Bonanza Grade Silver:
 - **7.54% Ag (75,439g/t)** (F005907)
 - **5.35% Ag (53,506g/t)** (F005909)
 - **9,070g/t Ag** (F005908)
 - **7,100g/t Ag** (F005415)
 - **2,700g/t Ag & 2.0% Cu** (F005417)
- Area remains significantly underexplored, with scope for further native and/or high grade silver discoveries

¹ See ASX Announcement - 27 August "Bonanza Grade Silver Discovery at the Great Bear Project"

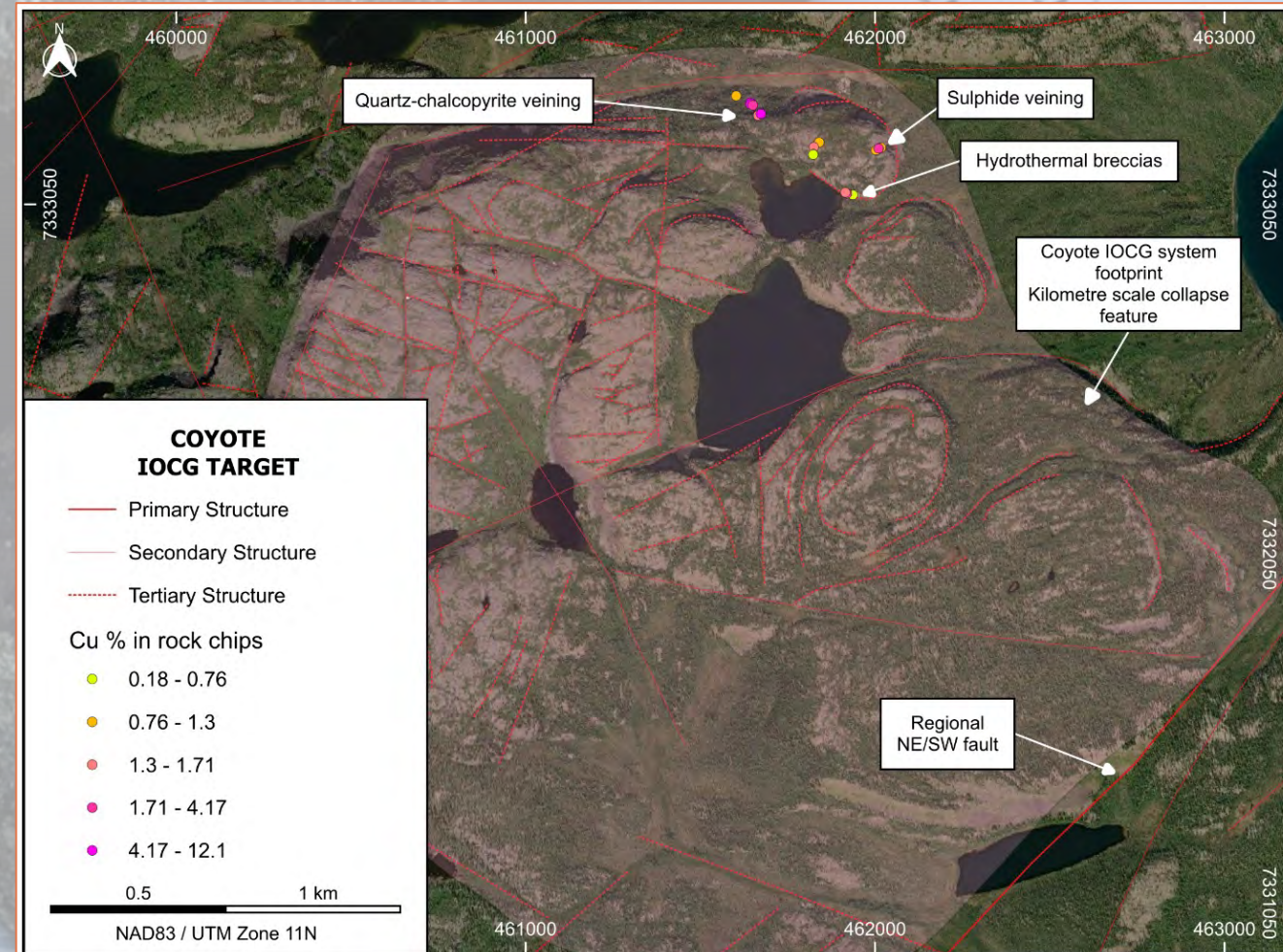
CANADA GREAT BEAR PROJECT

COPPER-GOLD-SILVER-URANIUM



Coyote¹

- Located 7.3km NE of the historic Eldorado Minesite
- Collapse spanning 2.5km diameter features may indicate dilation/brecciation/permeability creation at depth
- Samples taken from NE 440 x 195m zone only:
 - **17.4 g/t Au, 1.47% Cu, 29.6 g/t Ag** (F005673)
 - **16.95 g/t Au, 10.55% Cu, 45.3 g/t Ag** (F005669)
 - **15.1 g/t Au, 4.2 g/t Ag & 0.18% Cu** (F005684)
 - **14.35 g/t Au, 1.75% Cu, 32.5 g/t Ag** (F005683)
 - **8.91 g/t Au, 1.47% Cu, 62.5 g/t Ag** (F005682)
 - **12.10% Cu, 1.35 g/t Au, 20.3 g/t Ag** (F005670)



Map of copper concentration in rock chip samples from Coyote Target

¹ See ASX Announcement - 19 August "Great Bear Project delivers further outstanding Cu, Au & Ag assays

CANADA GREAT BEAR PROJECT

COPPER-GOLD-SILVER-URANIUM



Payback¹

- Located south of the **historic Echo Bay & Eldorado** mines and only 13km south of Phoenix
- High grade polymetallic, fracture and veinlet controlled mineralization:
 - **42.20% Cu, 716 g/t Ag** (F005604)
 - **30.20% Cu, 153 g/t Ag** (F005602)
 - **10.30% Cu, 116 g/t Ag, 2.04 g/t Au** (F005601)

Charlie²

- Strike covers approximately 900m
- Grab samples from the maiden campaign include:
 - **233g/t Ag and 9.8% Cu** (F005408)
 - **135g/t Ag and 8.3% Cu** (F005407)
 - **3.4% Cu, 24g/t Ag and 0.24% W** (F005405)



Sample F005604 which returned 42.20% Cu and 716g/t Ag

¹ See ASX Announcements - 19 August "Great Bear Project delivers further outstanding Cu, Au & Ag assays" ² See ASX Announcement - 27 August "Bonanza Grade Silver Discovery at the Great Bear Project"

CANADA GREAT BEAR PROJECT

COPPER-GOLD-SILVER-URANIUM



Cougar¹

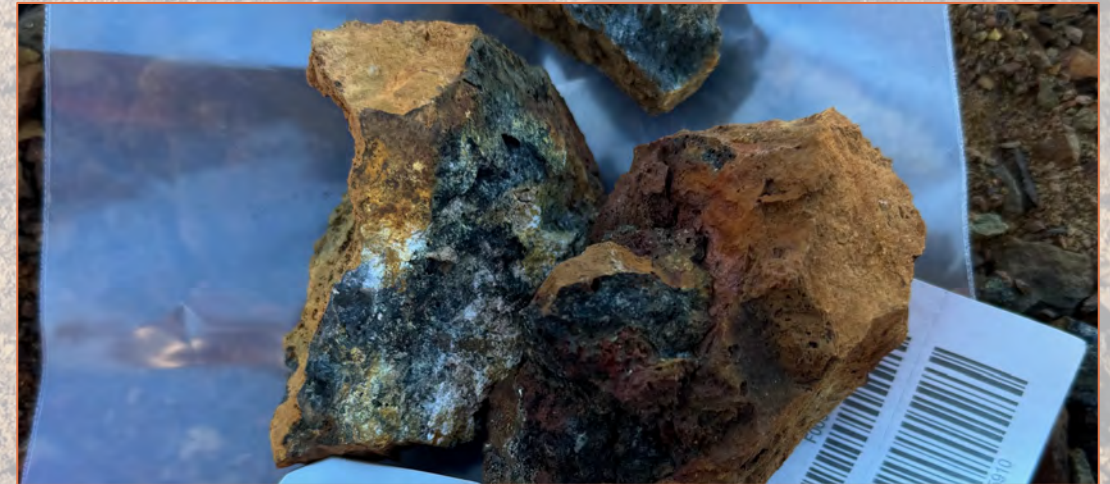
- Approximately 3.4km from Viper
- An IOCG target on the within the Contact Lake Belt
- Target area spans **1500 m N/S and 1100 m E/W**
- Rock chips sample returned an assay result of **13.5% Cu, 1.14 g/t Au, 97.4 g/t Ag** (F005648)



Sample F005648 which returned 13.5% Cu, 1.14 g/t Au and 97.4 g/t Ag

Viper¹

- An IOCG target that includes the historic K2 occurrence
- 2024 sampling produced high grade silver rock chips over an initial N/S strike of 75m
 - **102 g/t Ag, 0.137 g/t Au** (F005910)
 - **25.9 g/t Ag, 0.31 g/t Au** (F005913)
 - **13.15 g/t Ag and 0.44% Cu** (F005914)



Sample F005910 which returned 102 g/t Ag and 0.137 g/t Au

¹ See ASX Announcement - 19 August "Great Bear Project delivers further outstanding Cu, Au & Ag assays"

CANADA PROJECTS

NEWSFLOW & WHATS NEXT



✓ GEOPHYSICS @ RAE

Results - Aerial geophysics – further electromagnetic surveys (MobileMT) results to be received

✓ DRILLING @ RAE

Drilling planned to commence in 2025

✓ GEOPHYSICS @ GREAT BEAR

Results - Aerial geophysics - electromagnetic surveys (MobileMT) results to be received

✓ APPROVALS

Updates on drilling readiness, permitting & approvals for the Projects

✓ PLANNING

Further field reconnaissance, sampling & drilling programs across the Projects

✓ EXPLORATION

Ongoing exploration target generation across the portfolio of Projects

Competent Person Statement



The information contained in this presentation has been prepared by White Cliff Minerals Limited (the Company).

The information in this report that relates to exploration results is based on, and fairly represents information and supporting documentation prepared by Mr Roderick McIlree, a Competent Person who is a Fellow of the Australasian Institute of Mining and Metallurgy. Mr McIlree is a Director of White Cliff Minerals Limited. Mr McIlree has sufficient experience that is relevant to the style of mineralisation and type of deposit under consideration and to the activity being undertaken to qualify as a Competent Person as defined in the 2012 Edition of the "Australasian Code for Reporting of Exploration Results, Mineral Resource and Ore Reserves". Mr McIlree consents to the inclusion in this report of the matters based on his information in the form and context in which it appears.

This presentation relies on information previously released to the Australian Securities Exchange:

29 October 2024 "Multiple conductive anomalies identified at Hulk"
14 October 2024 "High Grade Copper Results Continue at Rae"
4 October 2024 "Large Scale Copper Discovery Confirmed at Rae Project"
27 August 2024 "Bonanza Grade Silver Discovery at the Great Bear Project"
20 August 2024 "Great Bear Project delivers further outstanding Copper, Gold & Silver assays"
13 August 2024 "Extraordinary Cu, Au & Ag Assays Received at Great Bear"
1 August 2024 "WCN Successfully Concludes Maiden Canadian Field Programs"
25 July 2024 "Widespread Chalcocite Dominant Vein Systems at Rae Cu-Ag-Au"
22 July 2024 "Appointment of Strategic Advisor"
18 July 2024 "Further IOCG, Copper & Epithermal Mineralisation Discovered"
12 July 2024 "IOCG & Epithermal Mineralisation Discovered at Great Bear"
8 July 2024 "Additional Land Acquired at Nunavut Cu-Ag-Au Project"
18 June 2024 "Large System Confirmed at Reedy's Gold Deposit"
28 May 2024 "Imminent Field Activities for Nunavut Cu-Au-Ag Project"
20 May 2024 "Priority Targets Confirmed at Great Bear Lake (Radium Point)"
25 March 2024 "Multiple High-Grade Uranium & Copper Targets at Radium Point"
15 January 2024 "Large Scale Uranium Project Secured in Canada"
8 November 2023 "White Cliff Secures Multiple High Grade Copper Projects"
27 March 2023 "Sale of Yinnetharra REE/Li Project to Minerals 260 Ltd"
29 October 2020 "Maiden 42,400 Ounces JORC Mineral Resource at Reedy South"

Appendix



WHITE CLIFF
MINERALS

ASX: WCN
wcminerals.com.au

Refining the portfolio to two highly prospective projects

Au

REEDY SOUTH GOLD¹

- JORC resource of **779,000 tonnes at 1.7 grams per tonne gold for 42,400 ounces** gold
- Reedy South is immediately south of Triton/South Emu Mine (ASX: WGX) and features multiple highly prospective walk up drill targets
- Recent drilling demonstrates extensive strike and depth-extensions around the existing inferred 2012 JORC Mineral Resource

Au

BENTLEY GOLD-COPPER-URANIUM

- Bentley is 45 km north of Warburton and 550km east of Laverton
- Area features strong magnetic and gravity anomalies

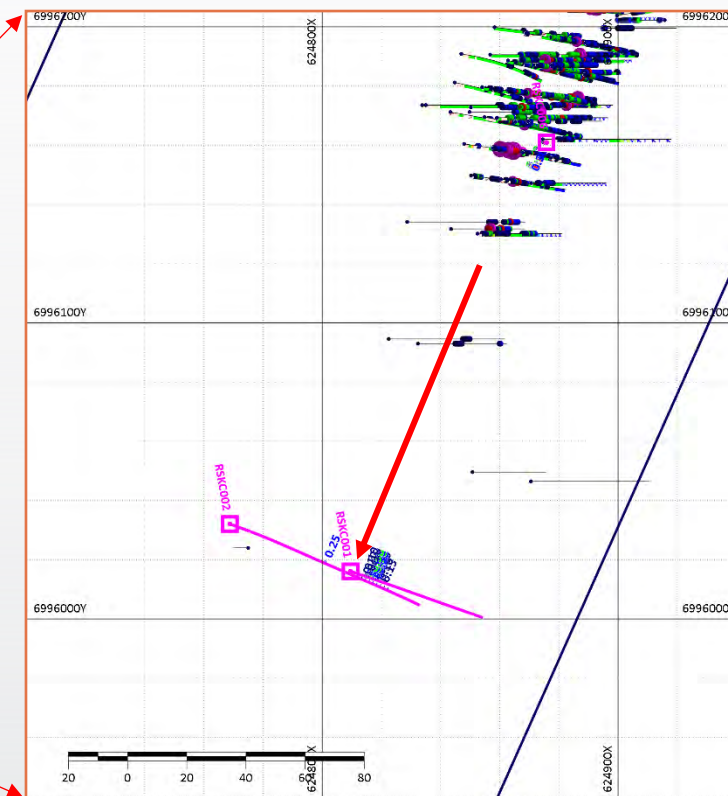
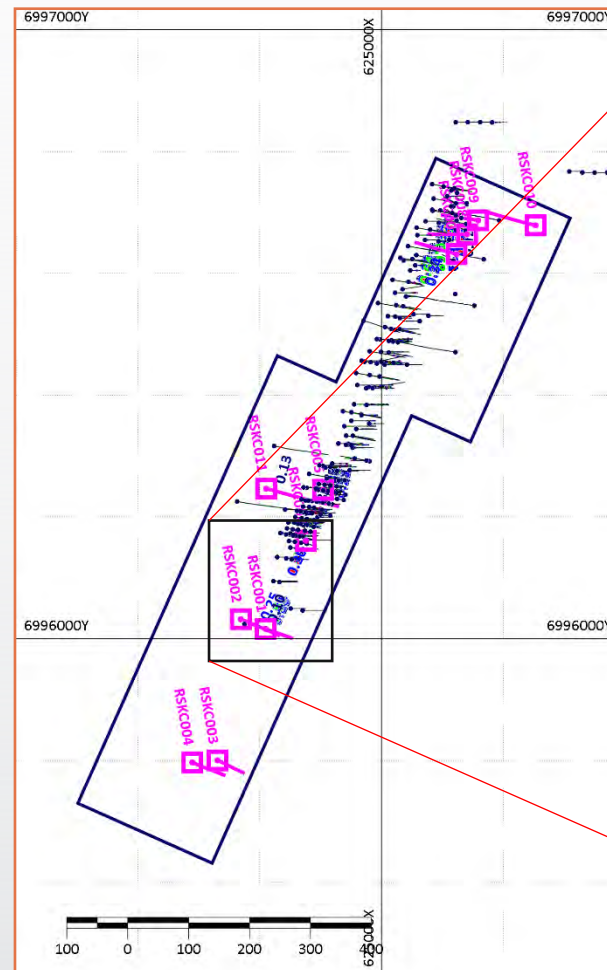
Cu

U

¹ See ASX Announcement - October 2020 "Maiden 42,400 Ounces JORC Mineral Resource at Reedy South"

Reedy South

- Reedy South sits within trucking distance of multiple existing operating gold plants, within this proven Goldfield in Western Australia
- Recent assay results¹ include:
 - 7m @ 1.12 g/t Au from 92m along strike, due north from the existing resource from drill hole RSKC009
 - 79m @ 1g/t Au from 10m from drill hole RSKC006 (down-dip)
 - 11m @ 0.53 g/t Au from 209m, ~20mts below the existing resource outline from drill hole RSKC011
 - 5m @ 0.45 g/t Au from 14m along strike, due south from the existing resource from drill hole RSKC001

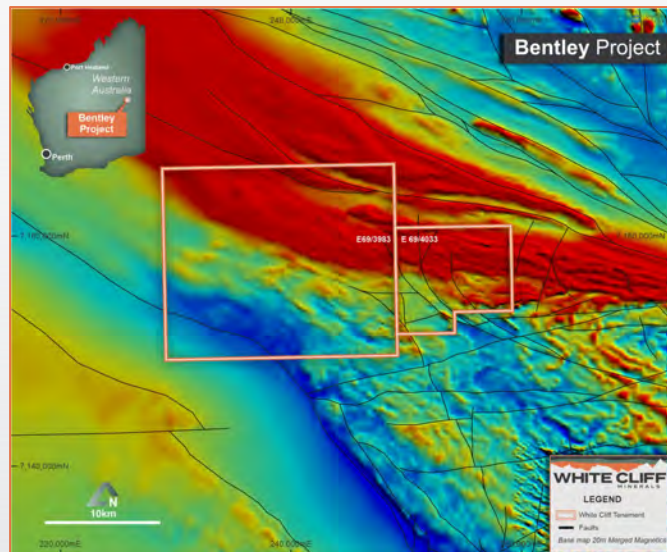


Reedy South Plan view showing historic drilling which forms the basis of the JORC resource. The Magenta drill hole traces of recent drill holes with grades evidencing lateral extensions to the existing JORC resource.

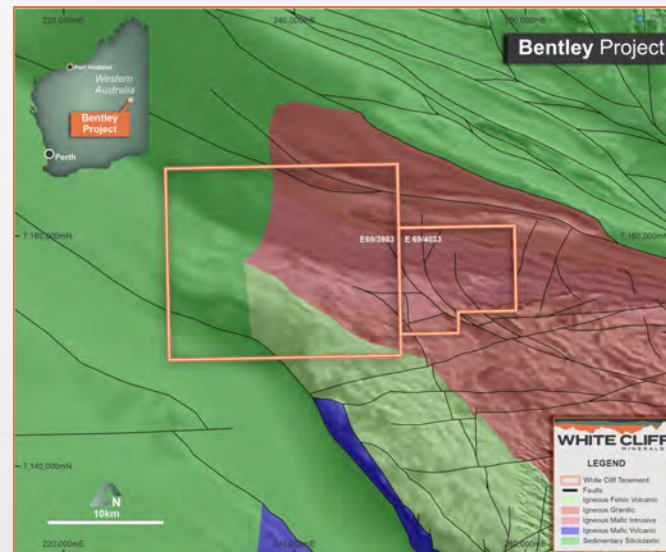
¹ See ASX Announcement – 12 June 2024 “Large system confirmed at Reedy South Gold Deposit”

Bentley

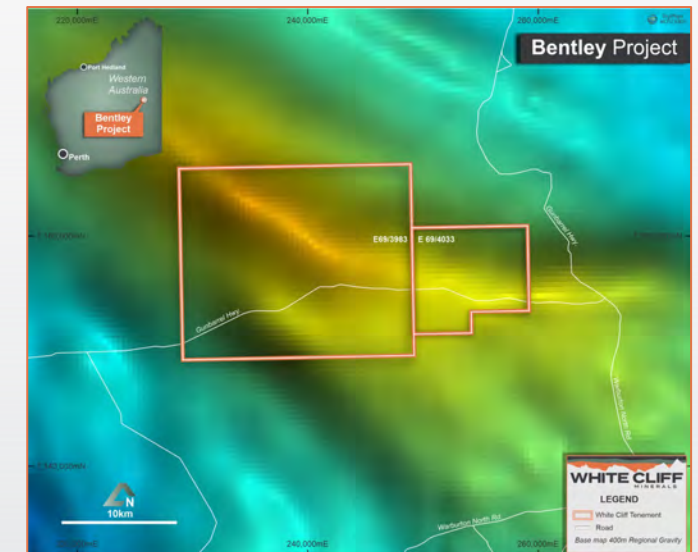
- Gravity anomalies trend in a northwest direction over a distance of approximately 9km and are flanked to the north and south by two major thrust faults which are highly prospective for **IOCG-U** mineral deposits as they share similar characteristics indicative of this type of mineralisation.
- Stakeholder discussions continue to progress on schedule and the Company anticipates the grant of the Exploration Licence in the near future



GSWA regional magnetic data with interpreted structures



GSWA interpreted BASEMENT GEOLOGY AND structures



GSWA REGIONAL GRAVITY DATA

CONTACT INFORMATION



Troy Whittaker
Managing Director

P: +61 8 9486 4036
E: info@wcminerals.com.au

WHITE CLIFF
MINERALS

ASX: WCN
wcminerals.com.au