

Commencement of RC Drilling at Tennant Creek

Emmerson Resources Limited (ASX: **ERM**) is pleased to advise that RC drilling has commenced on its Tennant Creek project in the Northern Territory (Figure 1). The programme includes approximately 5,000m of RC drilling targeting the Nobles Nob West prospect and the White Devil deposit and is expected to continue for around 4 weeks.



Photo 1: RC Drilling at the Nobles Nob West Prospect

2,000m of RC drilling has started at the historical high grade Nobles Nob West prospect, located approximately 1,500m west of the Nobles Nob processing plant, which is currently under construction by Emmerson's Tennant Creek Joint Venture Partner, Tennant Consolidated Mining Group Pty Ltd (**TCMG**), ~14km southeast of Tennant Creek. The processing plant is currently ~60% complete and is on schedule for commissioning in Q2 of 2025, with commercial production scheduled for Q3 2025.

Once drilling is completed at Nobles Nob West, the exploration focus will shift to the high grade White Devil Gold Mine, located 40km northwest of Tennant Creek (Figure 1). Drilling of 3,000m of RC at White Devil has been planned to test the shallow undrilled eastern extension of the deposit (Figure 2). The shallow extension hasn't been adequately tested previously due to logistical and operational constraints, however the deep high grade eastern extension was mined from underground. The shallow extension represents one of the most compelling open pit targets in the Tennant Creek district.

The White Devil Gold Mine is a high grade gold mine, that remains open to the east and at depth, which produced over 760,000 ounces of gold from 1.6Mt of ore at a recovered grade of 14.6 g/t gold predominately from underground prior to its closure in 1999 as a result of low gold price of the time. The gold price has increased 10 fold since the mine closed.

Drilling is being managed by Emmerson and funded, as part of an earn in joint venture, by TCMG, who are ~75% through earning into the Tennant Creek Project through funding \$10.5 million in exploration (~\$3.0 million of exploration funding remaining for TCMG to earn the right to form the 75% TCMG / 25% ERM Exploration JV).

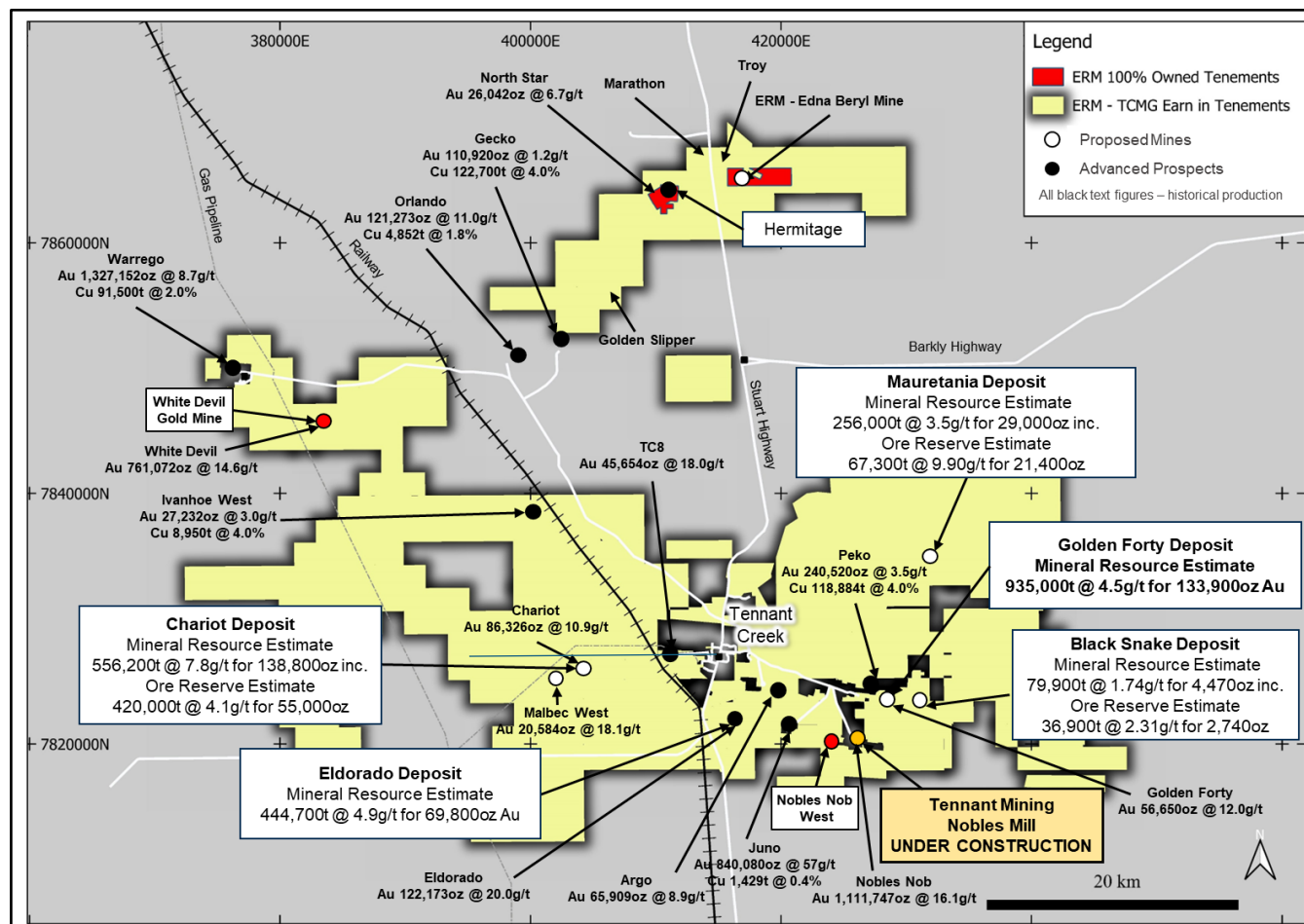


Figure 1: The Emmerson Tennant Creek Project showing the area covered by the Exploration (EEJV) and the ERM 100% owned Jasper Hills, Hermitage, North and Northern Star and Edna Beryl projects.

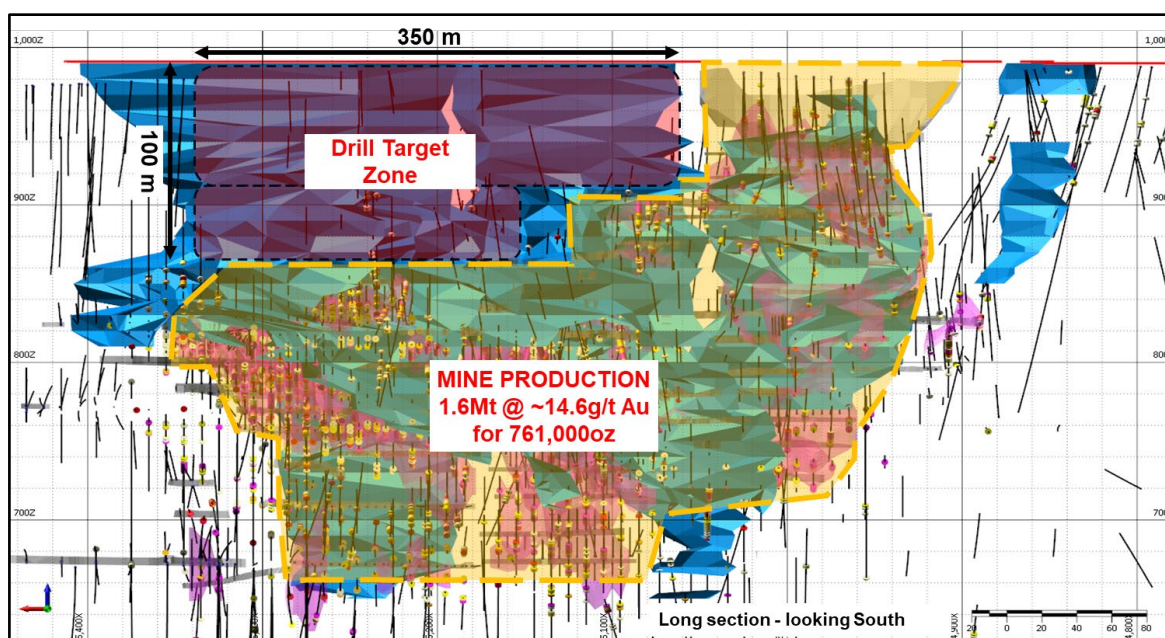


Figure 2: Long Section through the White Devil Deposit, highlighting the under drilled shallow eastern Extension.

Further information will be released as soon as available.

This release has been authorised by the Board of Emmerson Resources Limited

For further information, please contact:

Mike Dunbar

Managing Director and CEO

E: mdunbar@emmersonresources.com.au

T: +61 8 9381 7838

Media enquiries

Michael Vaughan, Fivemark Partners

E: michael.vaughan@fivemark.com.au

T: +61 422 602 720.

Competency Statement

The information in this release on Exploration Results is based on information compiled by Mr Mike Dunbar, who is a Member Australasian Institute of Mining and Metallurgy. Mr Dunbar has sufficient experience which is relevant to the style of mineralisation and types of deposits under consideration and to the activity which they are undertaking to qualify as a Competent Person as defined in the 2012 edition of the Australasian Code for Reporting of Exploration Results, Mineral Resources and Ore Reserves. Mr Dunbar is a full-time employee of the Company and consents to the inclusion in this report of the matters based on information in the form and context in which it appears.

Information in this announcement that relates to Exploration Results, Mineral Resources and Ore Reserves has been extracted from the following Company ASX announcements:

- ASX: 2 December 2021 – Chariot High Grade Gold Resource increased by 40%
- ASX: 6 April 2022 – High-Grade Gold Resource for Mauretania at Tennant Creek
- ASX: 19 March 2024 - Initial Ore Reserve for Chariot, Mauretania and Black Snake
- ASX: 6 May 2024 – Maiden High-grade Golden Forty Mineral Resource Estimate
- ASX: 12 June 2024 - Maiden High-grade Eldorado Mineral Resource Estimate

The Company confirms that it is not aware of any new information or data that materially affects the information that relates to Exploration Results, Mineral Resources or Ore Reserves included in previous market announcements. The Company confirms that the form and context in which the Competent Person's findings are presented have not been materially modified from the original market announcements.

The above announcements are available to view on the Company's website at www.emmersonresources.com.au

Regulatory Information

The Company does not suggest that economic mineralisation is contained in the untested areas, the information contained relating to historical drilling records have been compiled, reviewed, and verified as best as the Company was able. As outlined in this announcement the Company is planning further drilling programs to understand the geology, structure, and potential of the untested areas. The Company cautions investors against using this announcement solely as a basis for investment decisions without regard for this disclaimer.

Cautionary Statement and Forward-Looking Statements

This document may include forward-looking statements, opinions and projections, all preliminary in nature, prepared by the Company on the basis of information developed by itself in relation to its projects. Forward-looking statements include, but are not limited to, statements concerning Emmerson Resources Limited's anticipated future events, including future resources and exploration results, and other statements that are not historical facts. When used in this document, the words such as "could", "estimate", "plan," "expect," "intend," "may", "potential," "should," "believe", "anticipates", "predict", "goals", "targets", "aims", "outlook", "guidance", "forecasts", "may", "will", "would" or "should" or, in each case, their negative or other variations or similar expressions are forward-looking statements. By their nature, such statements involve known and unknown risks, assumptions, uncertainties, and other important factors, many of which are beyond the control of the Company, and which may cause actual results, performance, or achievements to differ materially from those expressed or implied by such statements.

Forward-looking statements speak only as at the date of this document and the Company does not undertake any obligation to update forward-looking statements even if circumstances or management's estimates or opinions should change. Forward-looking statements are provided as a general guide only and should not be relied on as an indication or guarantee of future performance. No representation is made that any of these statements or projections will come to pass or that any forecast result will be achieved, nor as to their accuracy, completeness or correctness. Similarly, no representation is given that the assumptions upon which forward looking statements may be based are reasonable. Given these uncertainties, investors should not place undue reliance on forward-looking statements. The Company cautions investors against using this announcement solely as a basis for investment decisions without regard for this disclaimer.

About Emmerson Resources Limited

Tennant Creek

Emmerson has a commanding land position and is exploring the Tennant Creek Mineral Field, one of Australia's highest-grade gold and copper fields that has produced over 5.5Moz of gold and 470,000t of copper from deposits including those now held by Emmerson such as White Devil, Chariot, and Golden Forty. These high-grade deposits are highly valuable exploration targets, and to date, Emmerson's discoveries include high-grade gold at Edna Beryl and Mauretania, plus copper-gold at Goanna and Monitor (both now held by others) and these were found utilising new technology and concepts and are the first discoveries in the TCMF for over two decades.

The rush of new tenement applications by major and junior explorers in the Tennant Creek district, not only highlights the prospectivity of the region for copper and gold but also Emmerson's strategic ~1,800km² land holding.

New South Wales

Emmerson is actively exploring two early-stage gold-copper projects in NSW, identified from the application of 2D and 3D predictive targeting models.

The highly prospective Macquarie Arc in NSW hosts >80Moz gold and >13Mt copper with these resources heavily weighted to areas of outcrop or limited cover. Emmerson's exploration projects contain many attributes of the known deposits within the Macquarie Arc but remain underexplored due to historical impediments, including overlying cover (farmlands and younger rocks) and a lack of effective historic exploration.

Table 1: Emmerson Resources Tennant Creek Project JORC 2012 Mineral Resource Details

Deposit	Indicated Resources			Inferred Resources			Total Resources		
	Tonnes (Kt)	Gold Grade (g/t)	Ounces	Tonnes (Kt)	Gold Grade (g/t)	Ounces	Tonnes (Kt)	Gold Grade (g/t)	Ounces
Mauretania (OP)	159.3	4.8	25,000	97.0	1.4	4,000	256.0	3.5	29,000
Chariot (OP)	64.5	18.1	37,600	8.2	14.4	3,800	72.7	17.7	41,400
Chariot (UG)	344.6	7.0	77,000	138.9	4.6	20,400	483.5	6.3	97,400
Black Snake (OP)	50.9	2.1	3,500	29.0	1.1	1,000	79.9	1.7	4,500
Golden Forty	706.0	5.0	113,200	228.7	2.8	20,700	935.0	4.5	133,900
Eldorado	277.5	6.2	55,600	167.2	2.6	14,200	444.7	4.9	69,800
Total	1,602.8	6.1	312,000	669.2	3.0	64,600	2,272.0	5.2	376,600

Notes: Inconsistencies in the table above are due to rounding.

Mauretania Open Pit (OP) as reported 6 April 2022 using a 0.5g/t gold cut-off grade and above the 190mRL (within 140m of surface).

Chariot Open Pit (OP) is as reported 2 December 2021, using a 1.0 g/t cutoff.

Chariot Underground is as reported 2 December 2021, using a 2.0 g/t cutoff and reported below a 180mRL.

Black Snake Open Pit Resource reported 19 March 2024, using a 0.5 g/t cutoff

Golden Forty Resource reported 6 May 2024 using a 0.5g/t cut-off.

Eldorado Resource reported 12 June 2024 using a 0.5g/t cut-off for shallow portion and 1.0g/t at depth

Table 2: Emmerson Resources Tennant Creek Project JORC 2012 Ore Reserve Details

Deposit	Proved Ore Reserves			Probable Ore Reserves			Total Ore Reserves		
	Tonnes	Grade g/t	Gold Ounces	Tonnes	Grade g/t	Gold Ounces	Tonnes	Grade g/t	Gold Ounces
Chariot	-	-	-	420,000	4.1	55,000	420,000	4.1	55,000
Mauretania	-	-	-	67,300	9.9	21,400	67,300	9.9	21,400
Black Snake	-	-	-	36,900	2.31	2,740	36,900	2.31	2,740
TOTAL	-	-	-	524,000	4.7	79,140	524,000	4.7	79,140