



# KORAB RESOURCES LIMITED

## KORAB HOUSE

[www.korab.com.au](http://www.korab.com.au)

### Issued Capital

Issued Shares: 367 Mln

Last Price: 0.8 cents

Capitalisation: \$3 Mln

### Listing Code

ASX: KOR

### Directors

**Andrej K. Karpinski**

Executive Chairman  
Executive Director

**Anthony G. Wills**

Non-executive Director  
(Independent)

**Alicja Karpinski**

Non-executive Director

### Projects

#### Rum Jungle

(Pine Creek, NT)

Magnesium, Gold, Silver, Tin  
Zinc, Lead, Nickel, Copper,  
Cobalt, Rare Earth Oxides,  
Scandium, Lithium, Iron Ore  
Manganese, Uranium  
Phosphate

#### Mt. Elephant

(Ashburton, WA)

Gold, Copper

#### Bobrikovo

(Luhansk, UKRAINE)

Gold, Silver, Zinc, Lead,  
Antimony

20 November 2024

## RENEWAL OF EXPLORATION LICENCE EL29550 AT RUM JUNGLE PROJECT

Korab Resources Ltd ("Korab", or "Company") (ASX: KOR) and its subsidiaries ("Korab Group") are pleased to advise that Exploration Licence EL29550 (the Tenement) has been renewed until 31 July 2026 and is eligible for further renewals.

EL29550 covers 172 square kilometres and forms part of the Rum Jungle Project (the Project). Rum Jungle Project includes Winchester magnesium deposit, as well as several areas containing silver, gold, copper, cobalt, scandium, zinc, lead, nickel, and magnesium prospects and targets. For the details of the Rum Jungle Project geology and the area covered by Exploration Licence EL29550 please refer to Figure 1 on Page 3. Rum Jungle Project is located within the Rum Jungle Mineral Field, some 70km south of Darwin near the regional town of Batchelor. For the location of the Rum Jungle Project please refer to Figure 2 on Page 4.

Korab is currently undertaking high-resolution vehicle-assisted and helicopter-assisted ground gravity surveys of the Rum Jungle Project, including parts of the Exploration Licence EL29550. Additional information about the above gravity surveys and upcoming high-resolution aerial magnetic, and LiDAR surveys can be sourced from prior multiple ASX reports which can be accessed from ASX website or by clicking on the links below:

"RUM JUNGLE HELI-ASSISTED GROUND GRAVITY SURVEY IN PROGRESS" (7 November 2024)  
<https://cdn-api.markitdigital.com/apiman-gateway/ASX/asx-research/1.0/file/2924-02878222-6A1236618>

"RUM JUNGLE GRAVITY SURVEY PRELIMINARY RESULTS" (18 September 2024)  
<https://cdn-api.markitdigital.com/apiman-gateway/ASX/asx-research/1.0/file/2924-02854160-6A1225922>

"RUM JUNGLE PROJECT GRAVITY SURVEY – CORRECTION" (4 September 2024)  
<https://cdn-api.markitdigital.com/apiman-gateway/ASX/asx-research/1.0/file/2924-02848807-6A1223955>

"OPERATIONS UPDATE - GROUND GRAVITY SURVEY AT RUM JUNGLE" (29 August 2024)  
<https://cdn-api.markitdigital.com/apiman-gateway/ASX/asx-research/1.0/file/2924-02845719-6A1222824&v=fc9bdb61fe50ea61f8225e24ce041a0e155a9400>

"OPERATIONS UPDATE - GROUND GRAVITY SURVEY AT RUM JUNGLE" (26 August 2024)  
<https://cdn-api.markitdigital.com/apiman-gateway/ASX/asx-research/1.0/file/2924-02843220-6A1222020&v=fc9bdb61fe50ea61f8225e24ce041a0e155a9400>

"GROUND GRAVITY SURVEY COMMENCED AT RUM JUNGLE PROJECT" (23 July 2024)  
<https://cdn-api.markitdigital.com/apiman-gateway/ASX/asx-research/1.0/file/2924-02830526-6A1216861&v=fc9bdb61fe50ea61f8225e24ce041a0e155a9400>

"START OF HIGH-RESOLUTION GRAVITY SURVEY AT RUM JUNGLE PROJECT" (19 July 2024)  
<https://cdn-api.markitdigital.com/apiman-gateway/ASX/asx-research/1.0/file/2924-02829582-6A1216449&v=fc9bdb61fe50ea61f8225e24ce041a0e155a9400>

"HIGH-RESOLUTION MAGNETIC, LIDAR, GRAVITY SURVEYS OF THE RUM JUNGLE PROJECT" (10 July 2024)



20 PROWSE STREET, WEST PERTH, WA, 6005, AUSTRALIA  
PO BOX 1958, WEST PERTH, WA, 6872, AUSTRALIA  
TEL (08) 9474 6166 FAX (08) 9322 6333  
ACN 082 140 252



PAGE 1



# KORAB RESOURCES LIMITED

## KORAB HOUSE

[www.korab.com.au](http://www.korab.com.au)

### Issued Capital

Issued Shares: 367 Mln

Last Price: 0.8 cents

Capitalisation: \$3 Mln

### Listing Code

ASX: KOR

### Directors

**Andrej K. Karpinski**

Executive Chairman  
Executive Director

**Anthony G. Wills**

Non-executive Director  
(Independent)

**Alicja Karpinski**

Non-executive Director

### Projects

**Rum Jungle  
(Pine Creek, NT)**

Magnesium, Gold, Silver, Tin  
Zinc, Lead, Nickel, Copper,  
Cobalt, Rare Earth Oxides,  
Scandium, Lithium, Iron Ore  
Manganese, Uranium  
Phosphate

**Mt. Elephant  
(Ashburton, WA)**

Gold, Copper

**Bobrikovo  
(Luhansk, UKRAINE)**

Gold, Silver, Zinc, Lead,  
Antimony

<https://cdn-api.markitdigital.com/apiman-gateway/ASX/asx-research/1.0/file/2924-02826794-6A1215313&v=fc9bdb61fe50ea61f8225e24ce041a0e155a9400>

*"HELICOPTER-ASSISTED INFILL GROUND GRAVITY SURVEY OF THE RUM JUNGLE PROJECT"* (26 June 2024)

<https://cdn-api.markitdigital.com/apiman-gateway/ASX/asx-research/1.0/file/2924-02821307-6A1213152&v=fc9bdb61fe50ea61f8225e24ce041a0e155a9400>

### END OF REPORT

This report has been authorised by Andrej K. Karpinski under the powers delegated by the Board.

### INVESTOR RELATIONS CONTACT

Andrej K. Karpinski - Executive Chairman

Australia: (08) 9474 6166

International: +61 8 9474 6166

### ABOUT KORAB RESOURCES

Korab Resources Ltd is an international mining and exploration company with operations in Australia and Europe. Korab's projects include Winchester Magnesium Deposit near Batchelor in the Northern Territory of Australia, Geolsec phosphate and rare earth elements deposit also near Batchelor, and projects in Australia and overseas where gold, silver, copper, cobalt, nickel, lithium, scandium, lead, zinc, tin, manganese, uranium and other elements have been discovered. More information about Korab's projects can be sourced from Korab's website at [www.korab.com.au](http://www.korab.com.au). Korab's shares are traded on Australian Securities Exchange (ASX).

### DISCLAIMER AND CAUTIONARY STATEMENT

Forward-looking statements are statements that are not historical facts. Words such as "expect(s)", "expected", "feel(s)", "believe(s)", "will", "may", "anticipate(s)", "should", "envisage(s)" and similar expressions are intended to identify such forward-looking information. This information includes, but is not limited to statements regarding future exploration results, resources, or reserves, and production. Anyone reading this report is cautioned not to place undue reliance on these forward-looking statements. All of such statements are subject to risks and uncertainties (many of which are difficult to predict and which generally are beyond the control of the Company) that could cause actual results to differ materially from those expressed in, or implied or projected by, the forward-looking information and statements. These risks and uncertainties include, but are not limited to: those relating to the interpretation of exploration results (including drill results), the geology, grade and continuity of mineral deposits and conclusions of economic evaluations; risks relating to possible variations in reserves, grade, mining dilution, ore loss, and recovery rates; risks relating to changes in project financial and technical parameters; risks relating to the potential for delays in exploration programs, project evaluation/review, completion of feasibility studies and project development; risks related to commodity prices and foreign exchange rate fluctuations; risks related to failure to secure adequate financing on a timely basis and on acceptable terms; risks related to delays in obtaining governmental, or other permits and approvals; risks related to security of tenure; and other risks and uncertainties related to the Company's prospects, properties and business strategy. Any forward-looking information contained in this report is provided as of the date of this report. Except as required under applicable listing rules and securities laws, the Company does not intend, and does not assume any obligation, to update this forward-looking information.



20 PROWSE STREET, WEST PERTH, WA, 6005, AUSTRALIA  
PO BOX 1958, WEST PERTH, WA, 6872, AUSTRALIA  
TEL (08) 9474 6166 FAX (08) 9322 6333  
ACN 082 140 252



PAGE 2





# KORAB RESOURCES LIMITED

## KORAB HOUSE

[www.korab.com.au](http://www.korab.com.au)

### Issued Capital

Issued Shares: 367 Mln

Last Price: 0.8 cents

Capitalisation: \$3 Mln

### Listing Code

ASX: KOR

### Directors

**Andrej K. Karpinski**  
Executive Chairman  
Executive Director

**Anthony G. Wills**  
Non-executive Director  
(Independent)

**Alicja Karpinski**  
Non-executive Director

### Projects

#### Rum Jungle (Pine Creek, NT)

Magnesium, Gold, Silver, Tin  
Zinc, Lead, Nickel, Copper,  
Cobalt, Rare Earth Oxides,  
Scandium, Lithium, Iron Ore  
Manganese, Uranium  
Phosphate

#### Mt. Elephant (Ashburton, WA)

Gold, Copper

#### Bobrikovo (Luhansk, UKRAINE)

Gold, Silver, Zinc, Lead,  
Antimony

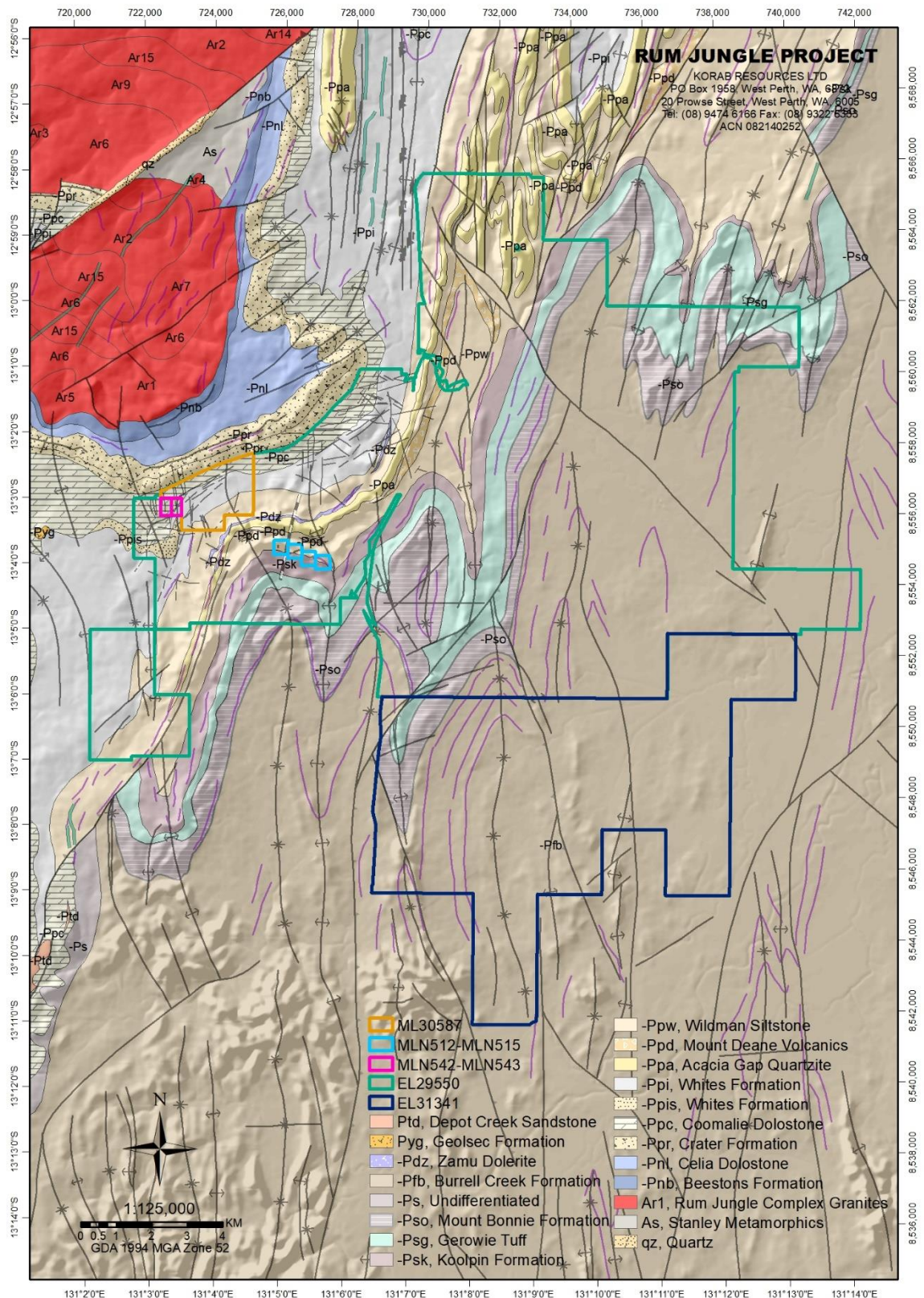


Figure 1 Rum Jungle Project on geology and elevation (renewed tenement EL29550 is outlined in green)



20 PROWSE STREET, WEST PERTH, WA, 6005, AUSTRALIA  
PO BOX 1958, WEST PERTH, WA, 6872, AUSTRALIA  
TEL (08) 9474 6166 FAX (08) 9322 6333  
ACN 082 140 252







# KORAB RESOURCES LIMITED

## KORAB HOUSE

[www.korab.com.au](http://www.korab.com.au)

### Issued Capital

Issued Shares: 367 Mln

Last Price: 0.8 cents

Capitalisation: \$3 Mln

### Listing Code

ASX: KOR

### Directors

**Andrej K. Karpinski**

Executive Chairman  
Executive Director

**Anthony G. Wills**

Non-executive Director  
(Independent)

**Alicja Karpinski**

Non-executive Director

### Projects

#### **Rum Jungle**

##### **(Pine Creek, NT)**

Magnesium, Gold, Silver, Tin  
Zinc, Lead, Nickel, Copper,  
Cobalt, Rare Earth Oxides,  
Scandium, Lithium, Iron Ore  
Manganese, Uranium  
Phosphate

#### **Mt. Elephant**

##### **(Ashburton, WA)**

Gold, Copper

#### **Bobrikovo**

##### **(Luhansk, UKRAINE)**

Gold, Silver, Zinc, Lead,  
Antimony



Figure 2 Location of Rum Jungle Project



20 PROWSE STREET, WEST PERTH, WA, 6005, AUSTRALIA  
PO BOX 1958, WEST PERTH, WA, 6872, AUSTRALIA  
TEL (08) 9474 6166 FAX (08) 9322 6333  
ACN 082 140 252

