

ASX:TOR



UNVEILING SIGNIFICANT MINERAL VALUE IN THE WEST AUSTRALIAN GOLDFIELDS

DECEMBER 2024

DISCLAIMER

IMPORTANT. Before continuing, please read the following: This Presentation has been prepared by Torque Metals Limited (ACN 621 122 905) ("Torque or "the Company") solely for information purposes.

This Presentation, including the information contained in this disclaimer, is not a prospectus and does not constitute an offer to sell, or the solicitation of an offer to buy, nor shall there be any sale of securities in any state or other jurisdiction in which such offer, solicitation or sale would be unlawful under applicable law, including the United States Securities Act of 1933, as amended (US Securities Act). Securities have not been registered under the US Securities Act or any US state securities laws and may not be offered or sold in the United States, an absent registration or an applicable exemption from registration under the Securities Act and applicable state securities laws.

The Company has prepared this Presentation based on information available to it at the time of preparation. All exploration results within this presentation have been previously reported, there is no new information or data materially affecting the exploration results. None of the Relevant Persons have independently verified the data contained in this Presentation. The information contained in this Presentation does not purport to be comprehensive. No representation nor warranty is made as to the fairness, accuracy or completeness of the information, opinions and conclusions contained in this Presentation or any other information provided by the Company.

You cannot assume that the information in this Presentation will be updated at any time subsequent to the date of this Presentation. The distribution of this Presentation does not constitute a representation by any Relevant Person that the information will be updated at any time after the date of this Presentation. Except to the extent required by law, no Relevant Person undertakes to advise any person of any information coming to their attention relating to the financial condition, status or affairs of the Company. To the maximum extent permitted by law, the Relevant Persons are not liable for any direct, in director consequential loss or damage suffered by any person as a result of relying on this Presentation or otherwise in connection with it.

Statements of past performance: This Presentation includes information regarding the past performance of the Company. Investors should be aware that past performance is not indicative of future performance.

Statements of numbers and financial performance: All financial amounts contained in this Presentation are expressed in Australian currency, unless otherwise stated. Any discrepancies between totals and sums of components in tables contained in this Presentation are due to rounding.

Reporting of mineral resources and reserves: This Presentation includes mineral resource information prepared by "competent persons" in accordance with the Australasian Code for Reporting of Exploration Results, Mineral Resources and Ore Reserves (JORC Code). Where used in this Presentation, the terms "resource", "reserve", "proven reserves", "probable reserves", "inferred resources", "indicated resources" and "measured resources" have the meanings given to them in the JORC Code.

Forward-looking statements: This Presentation contains forward-looking statements concerning the Company's business, operations, financial performance and condition as well as the Company's plans, objectives and expectations for its business, operations, financial performance and condition. Any statements contained in this Presentation that are not of historical facts may be deemed to be forward-looking statements. You can identify these statements by words such as "aim", "anticipate", "assume", "believe", "could", "due", "estimate", "expect", "goal", "intend", "may", "objective", "plan", "predict", "potential", "positioned", "should", "target", "will", "would" and other similar expressions that are predictions of or indicate future events and future trends. These forward-looking statements are based on current expectations, estimates, forecasts and projections about the Company's business and the industry in which the Company operates and management's beliefs and assumptions.

These forward-looking statements are not guarantees of future performance or development and involve known and unknown risks, uncertainties and other factors, many of which are beyond the Company's control. As a result, any or all of the forward-looking statements in this Presentation may turn out to be inaccurate. Factors that may cause such differences or make such statements inaccurate include, but are not limited to, the risk factors described in this Presentation. Readers of this Presentation are urged to consider these factors carefully in evaluating the forward-looking statements set out in this Presentation and are cautioned not to place undue reliance on such forward-looking statements. Unless required by law, the Company does not intend to publicly update or revise any forward-looking statements to reflect new information or future events or otherwise.

These forward-looking statements speak only as at the date of this presentation. Save as required by applicable law or regulation the company expressly disclaims any obligation or undertaking to disseminate any updates or revisions to any forward-looking statements contained herein to reflect any change in the company's expectations with regard thereto or any change in events, conditions or circumstances on which any such statements are based. As a result of these factors, the events described in the forward-looking statements in this presentation may not occur. Nothing in this Presentation constitutes the provision of financial or legal advice.

This Presentation has been authorised by the Board of Directors of Torque.



A COMPELLING INVESTMENT PROPOSITION

WHY INVEST IN TORQUE



EFFICIENT
CAPITAL
STRUCTURE

250million shares
with open register



CONSISTENT
GOLD GRADES

250,000oz @ 3.1 g/t Au
of open and growing
gold resources¹



13 MINING
4 PROSPECTING
38 EXPLORATION
LICENCES

~1200km² of granted
mining tenure in world-
class geology



MULTI-SKILLED
TECHNICAL
PERSONNEL

In-house expertise in
Geophysics, Geology,
Engineering, Resources



TRANSPORT
INFRASTRUCTURE
AND PROCESSING
PLANTS

Close to existing
processing facilities
(Goldfields, Westgold)



PARIS
NEW DAWN AND
PENZANCE GOLD
POTENTIAL

Unveiling gold potential in the
West Australian Goldfields



CORPORATE SNAPSHOT

SHARE PRICE¹

\$0.05

¹MARKET CAP

\$12.5M

ENTERPRISE VALUE

\$9.9M

CASH²

\$2.6M

DEBT

NIL

BOARD OF DIRECTORS

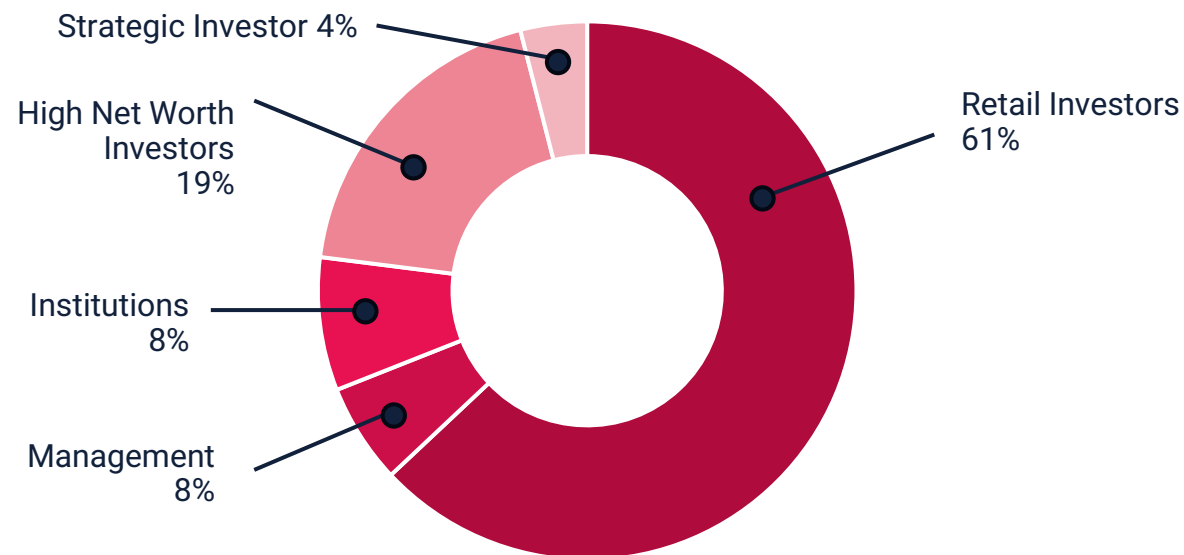
CRISTIAN MORENO
MANAGING DIRECTOR

ANDREW WOSKETT
NON-EXECUTIVE CHAIR

TONY LOFTHOUSE
NON-EXECUTIVE DIRECTOR

IMANTS KINS
NON-EXECUTIVE DIRECTOR

ORDINARY SHARES ON ISSUE: 249,663,926 | PERFORMANCE RIGHTS: 0 (Board and management)³



¹ Share Price and Market Cap as of 28 November 2024

² Refer to ASX announcement 25/10/2024 – Quarterly Activities and Cash Flow Report



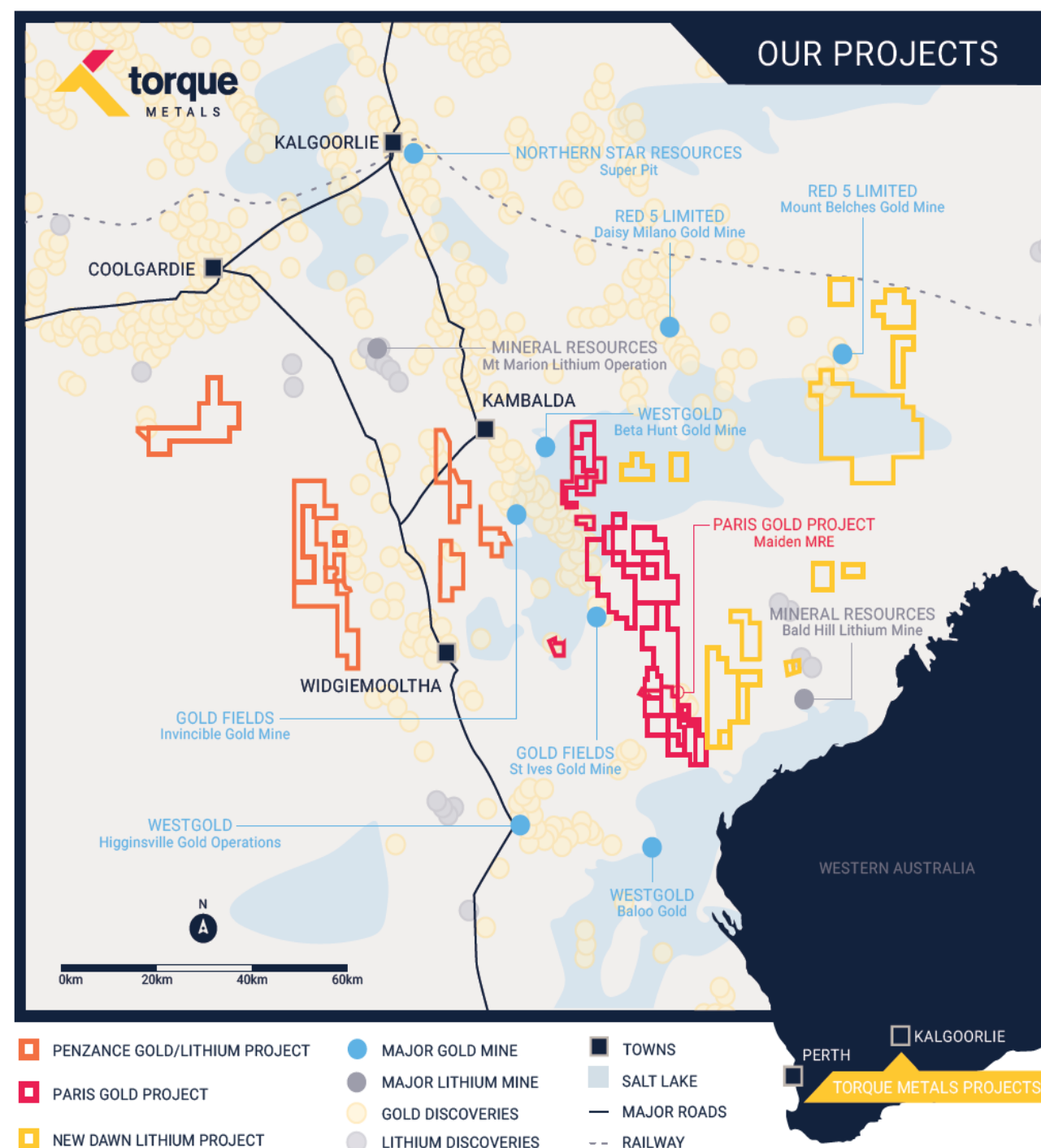
PRIME ASSETS IN WA'S PROFILITIC BOULDER – LEFROY GOLD BELT

~1200km²

SIGNIFICANT GOLDFIELDS LANDHOLDING

Beta Hunt, Invincible, Higginsville,
St Ives, Mount Belches
**PROXIMATE TO PROCESSING
INFRASTRUCTURE**

13 ML's, 4 PL's, 38 EL's
DEVELOPMENT-READY



PARIS GOLD PROJECT

KEY INVESTOR HIGHLIGHTS

250,000 @ 3.1g/t Au JORC 2012 RESOURCE

Open pit: 190,000 @ 2.9g/t Au

Underground: 60,000 @ 3.8g/t Au

New drilling continues to extended gold mineralisation.

EXTENSIVE AND PROSPECTIVE LAND AREA

Fertile geology on granted mining licences in the Western Australian Gold Fields close to processing facilities (**Goldfields, Westgold**).

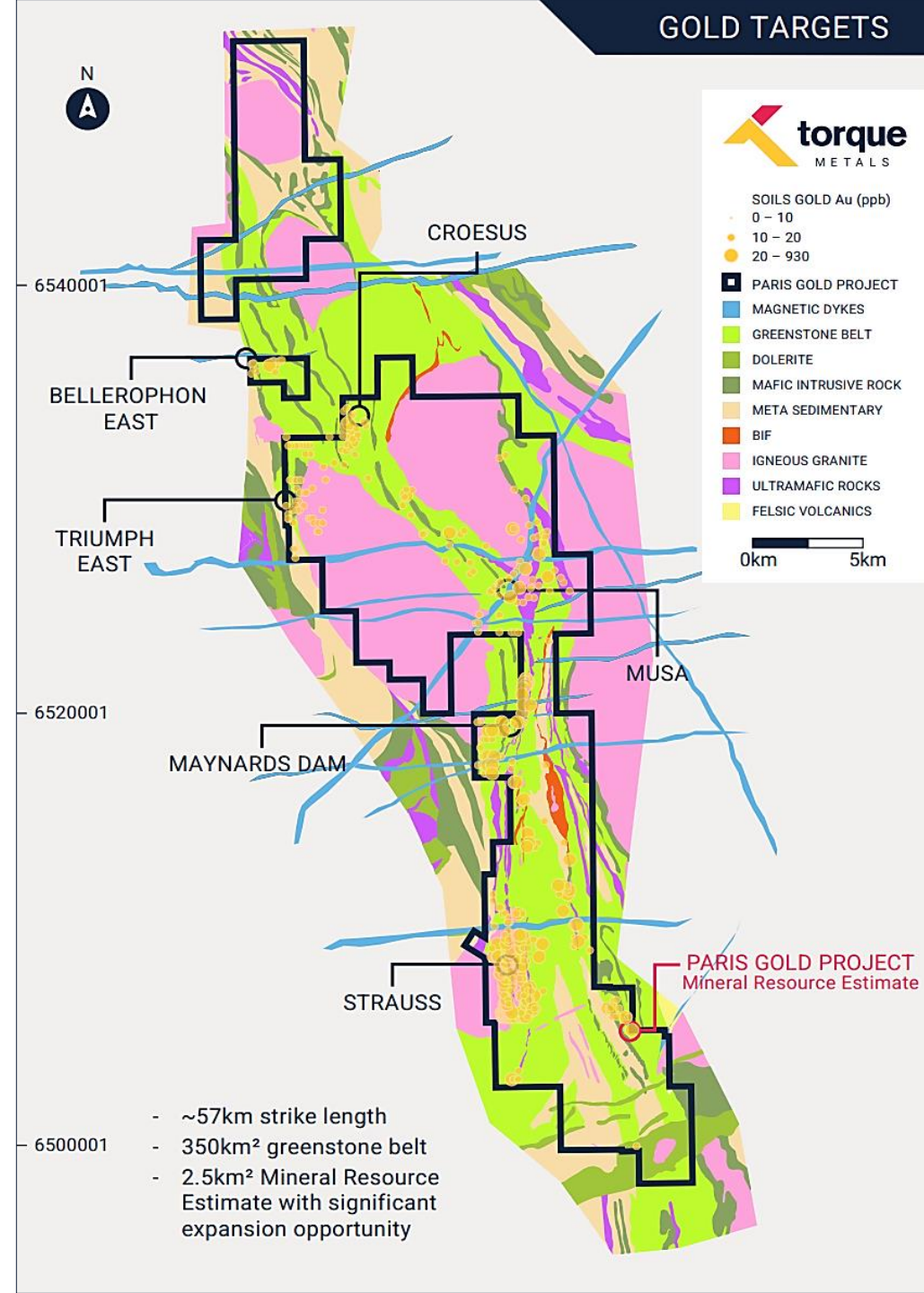
CONSISTENT, HIGH RECOVERY RATES ACHIEVED

>96% Metallurgical Recovery Rate in Paris Deposit.

>99% Metallurgical Recovery Rate in Observation Deposit.

LOCATED IN A PREMIER GOLD PROVINCE

Near key infrastructure, including the Higginsville/St Ives mills, in the WA Goldfields Boulder-Lefroy Fault, with over **70 Moz** gold production.



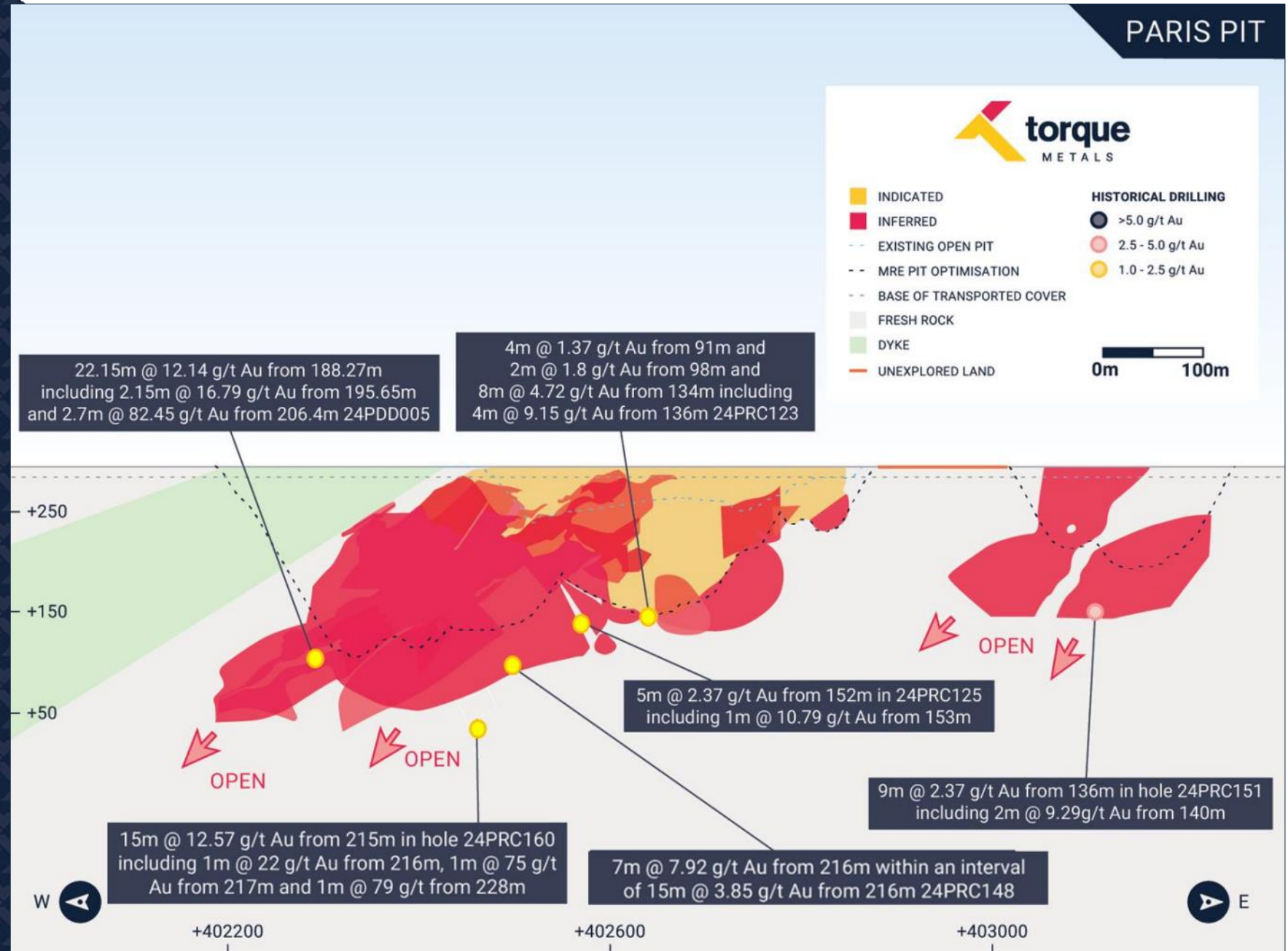
PARIS DEPOSIT

RESOURCE CLASSIFICATION

152,000 OUNCES @ 4.3 G/T GOLD

284Kt @ 3.7g/t gold for 34,000 ounces (22%) classified as Indicated.

810Kt @ 4.5g/t gold for 118,000 ounces (78%) classified as Inferred.



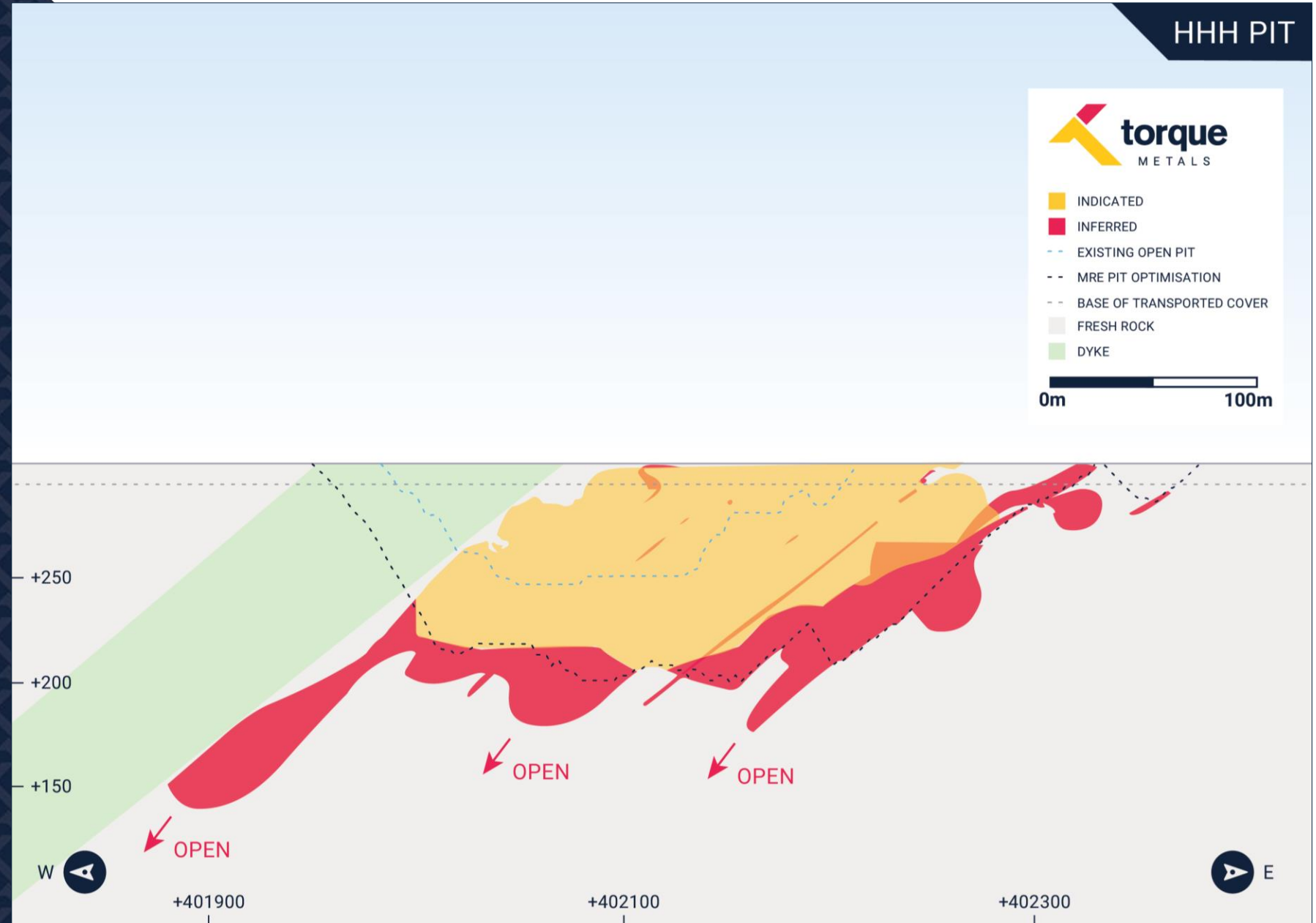
HHH DEPOSIT

RESOURCE CLASSIFICATION

**73,000 OUNCES
@ 2.0 G/T GOLD**

97Kt @ 3.3g/t gold
for 10,000 ounces
(14%) classified as
Indicated.

1048Kt @ 1.9g/t
gold for 63,000
ounces (86%)
classified as
Inferred.



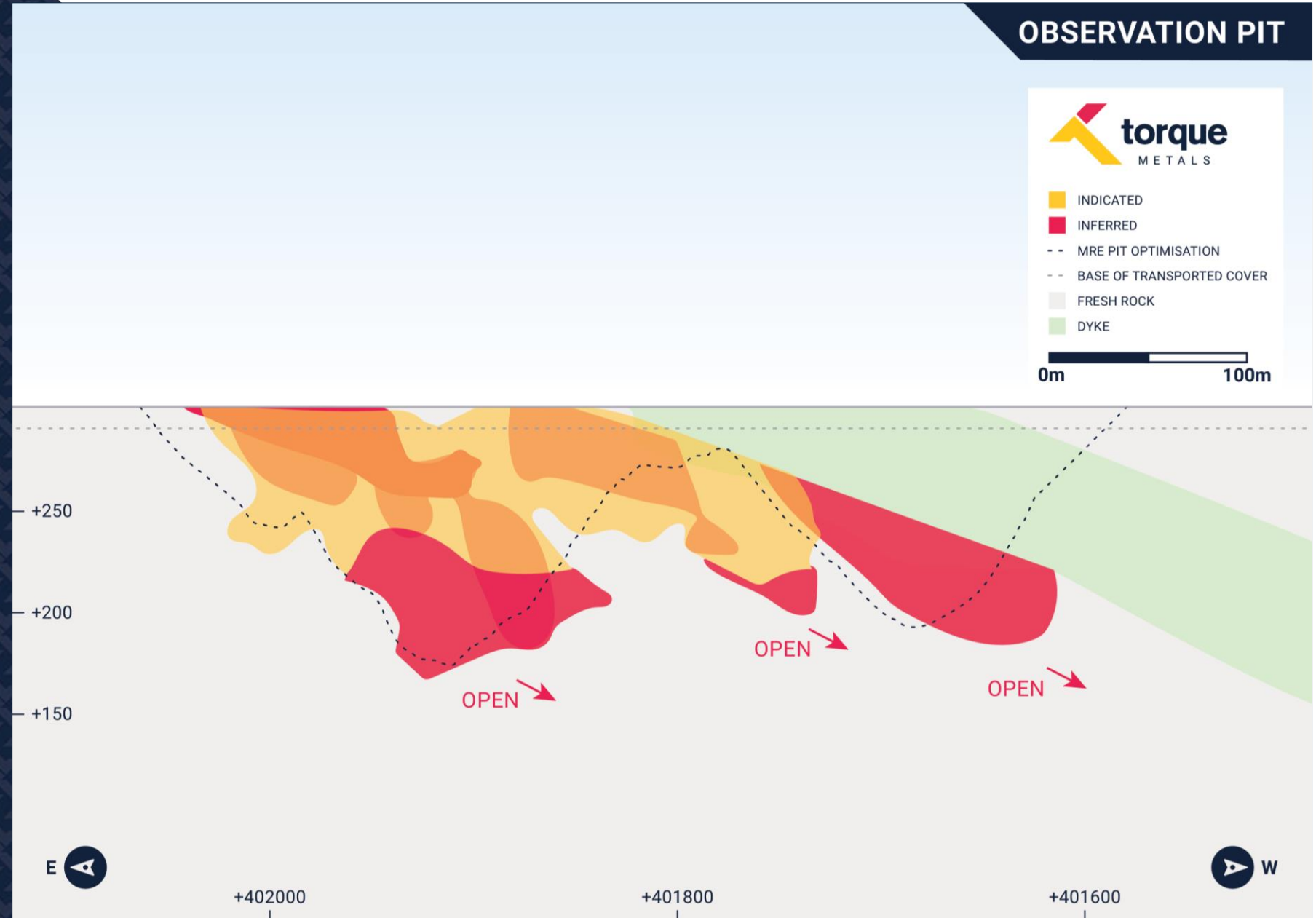
OBSERVATION DEPOSIT

RESOURCE CLASSIFICATION

**25,000 OUNCES
@ 2.8 G/T GOLD**

**225Kt @ 2.7g/t gold
for 19,000 ounces
(76%) classified as
Indicated.**

**54Kt @ 3.5g/t gold
for 6,000 ounces
(24%) classified as
Inferred.**



CONSISTENT GOLD GRADES

GREAT RESULTS

35m @ 14.12 g/t Au from 157.85m including
1.2m @ 185 g/t Au from 174.7m;
4.44m @ 20.82 g/t Au from 170.3m;
2.49m @ 40.6 g/t Au from 167.8m;
(23PRCDD076)



CONSISTENT GOLD GRADES

GREAT RESULTS

15m @ 12.57 g/t Au from 215m including

1m @ 22 g/t Au from 216m;

1m @ 75 g/t Au from 217m;

1m @ 79 g/t Au from 228m;

(24PRC160)



CONSISTENT GOLD GRADES

GREAT RESULTS

39m @ 6.05 g/t Au from 175m including
9m @ 10.66 g/t Au from 178m;
3m @ 29.4 g/t Au from 202m;
(22PRC053)



CONSISTENT GOLD GRADES

GREAT RESULTS

41m @ 5.93 g/t Au from 188m including
3m @ 59.35 g/t Au from 204m;
2m @ 25.54 g/t Au from 189m;
(21PRC056)



POTENTIAL OUTSIDE MRE ZONE

PARIS GOLD PROJECT

STRAUSS PROSPECT

Best result to date **8m @ 1.7 g/t Au** from 64m
Strauss Prospect is not included in the MRE

MAYNARDS DAM PROSPECT

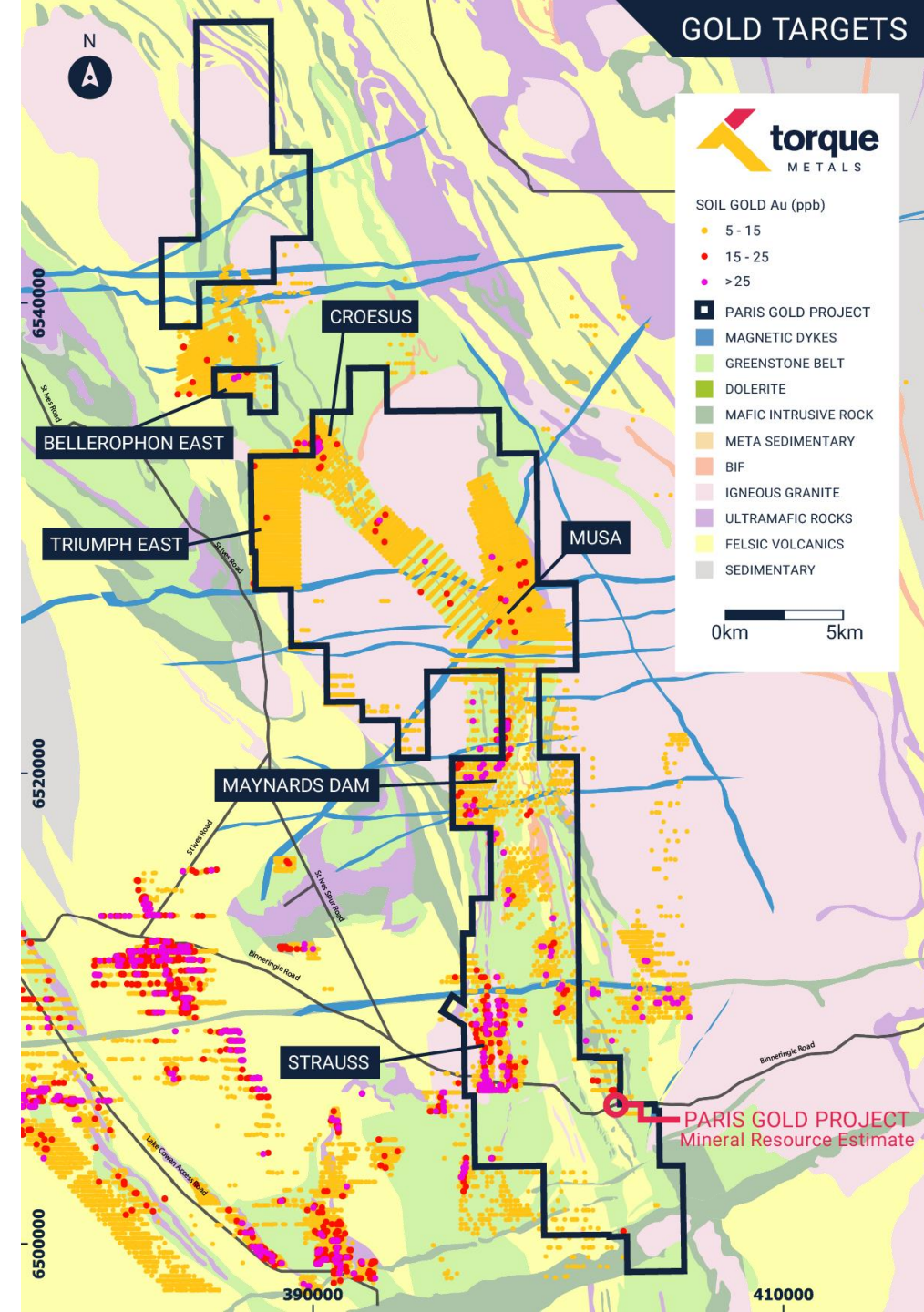
Best result to date **5m @ 16.97 g/t Au** from 21m
Maynards Dam Prospect is not included in the MRE

TRIUMPH EAST PROSPECT

800m East of Goldfields operations, gold mineralisation identified from historical drilling

CROESUS, MUSA AND BELLEROPHON PROSPECTS

Strong magnetic, gravity and soil anomalies with values of gold up to 178ppb



POTENTIAL OUTSIDE MRE ZONE

PARIS GOLD PROJECT

FAVOURABLE CHARACTERISTICS UNDERPIN PROJECT

Paris lies on a major geological fault, Boulder-Lefroy, which hosts world-class deposits. Resource is within 150m from surface and is open to depth

GROWTH TARGETS IDENTIFIED FOR DRILLING

Various, relatively unexplored prospects pivotal to future resource growth identified for forthcoming exploration activity.

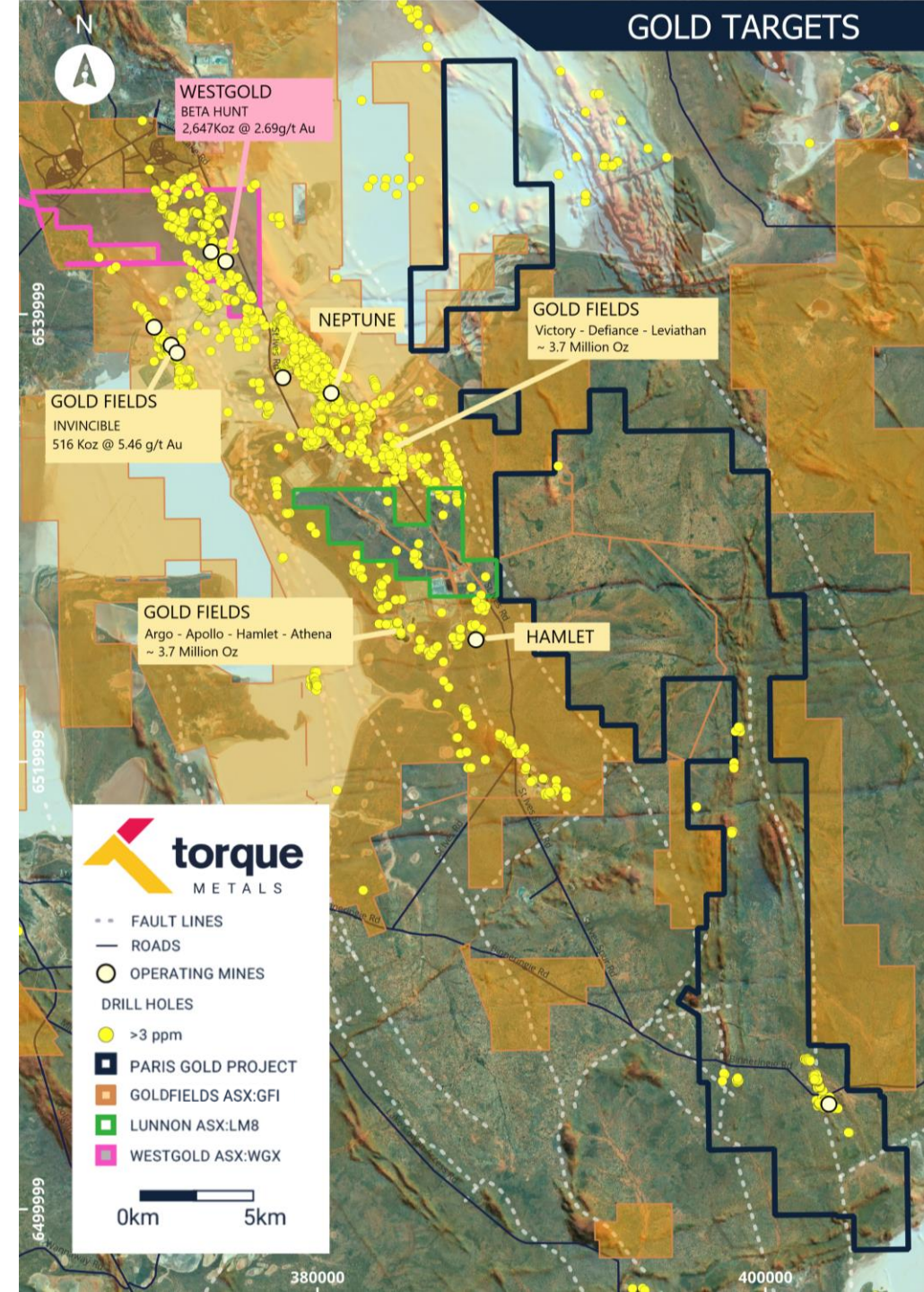
PROXIMITY TO ACTIVE GOLD OPERATIONS (WESTGOLD, GOLDFIELDS)

¹Westgold (ASX: WGX) Beta Hunt MRE: 2,647koz @ 2.69g/t Au

²Goldfields (NYSE:GFI) Invincible Deep. MRE: 516koz @ 5.46 g/t Au

³Goldfields (NYSE:GFI) Victory – Defiance - Leviathan: ~ 3.7 Million Oz

³Goldfields (NYSE:GFI) Argo – Apollo - Hamlet - Athena: ~ 3.7 Million Oz



¹Refer to ASX: WGX Announcement dated 16 September 2024 – 2024 MINERAL RESOURCE ESTIMATE AND ORE RESERVES

²Refer to: Gold Fields Mineral Resources and Mineral Reserves Supplement 2018

³Refer to: Gold Fields Australia Site Visit: St Ives Gold Mine, 14 July 2014. (Page 20)

POTENTIAL OUTSIDE MRE ZONE

PENZANCE GOLD PROJECT

GRANTED TENEMENTS IN A TIER-1 GOLD REGION

70km South of Kalgoorlie, premier gold mining jurisdiction, surrounded by high-quality gold projects.

PROVEN GOLD-BEARING REGION

Proximity to active gold operations (**Westgold, Goldfields**) increasing likelihood of discovery and production success.

POTENTIAL FOR ANALOGOUS GOLD MINERALISATIONS

¹Astral (ASX: AAR) MRE: 1,265koz @ 1.1g/t Au

²Maximus (ASX: MXR) MRE: 335koz @ 1.5g/t Au

³Westgold (ASX: WGX) Beta Hunt MRE: 2,647koz @ 2.69g/t Au

⁴Goldfields (NYSE:GFI) Invincible D. MRE: 516koz @ 5.46 g/t Au

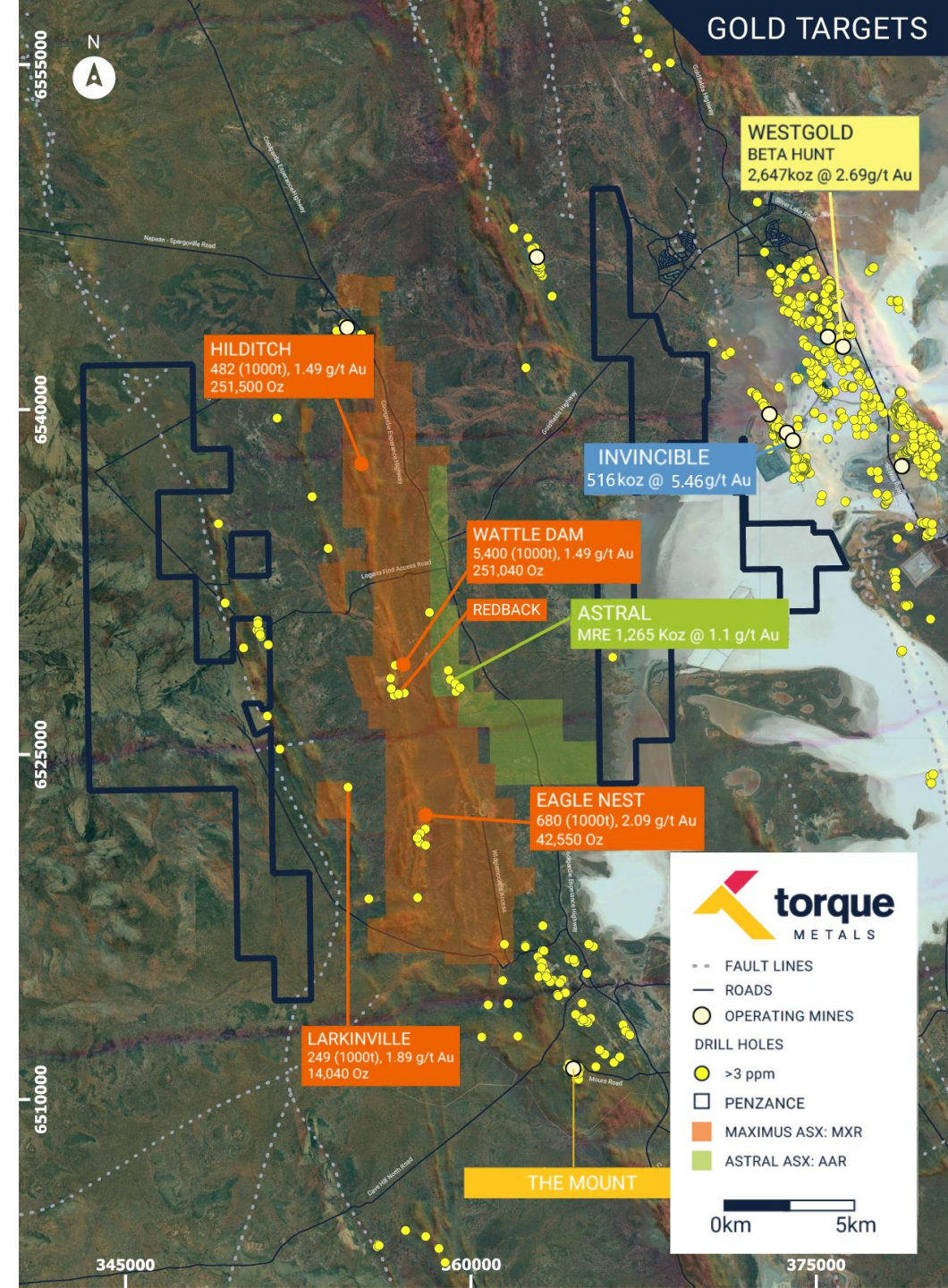
¹Refer to ASX: AAR Announcement dated 18 November 2024 – Noosa Mining Conference Presentation

²Refer to ASX: MXR Announcement dated 7 November 2024 – AGM Presentation

³Refer to ASX: WGX Announcement dated 16 September 2024 – 2024 MINERAL RESOURCE ESTIMATE AND ORE RESERVES

⁴Refer to: Gold Fields Mineral Resources and Mineral Reserves Supplement 2018

⁵Maximus MRE by deposit in Map. Refer to ASX: MXR Announcement dated 2 October 2024 - Eagles Nest drilling confirms high-grade gold and expands shallow mineralisation



POTENTIAL OUTSIDE MRE ZONE

NEW DAWN GOLD POTENTIAL

PROXIMITY TO PROVEN DEPOSITS

Adjacent of Mount Belches Mining Centre, 50 km south-east of Kalgoorlie, within the Goldfields Region of Western Australia.

ESTABLISHED HIGH-GRADE GOLD-BEARING JURISDICTION

Mount Belches is a successful mining operations, proving the area's geological potential and making it a target for continued exploration.

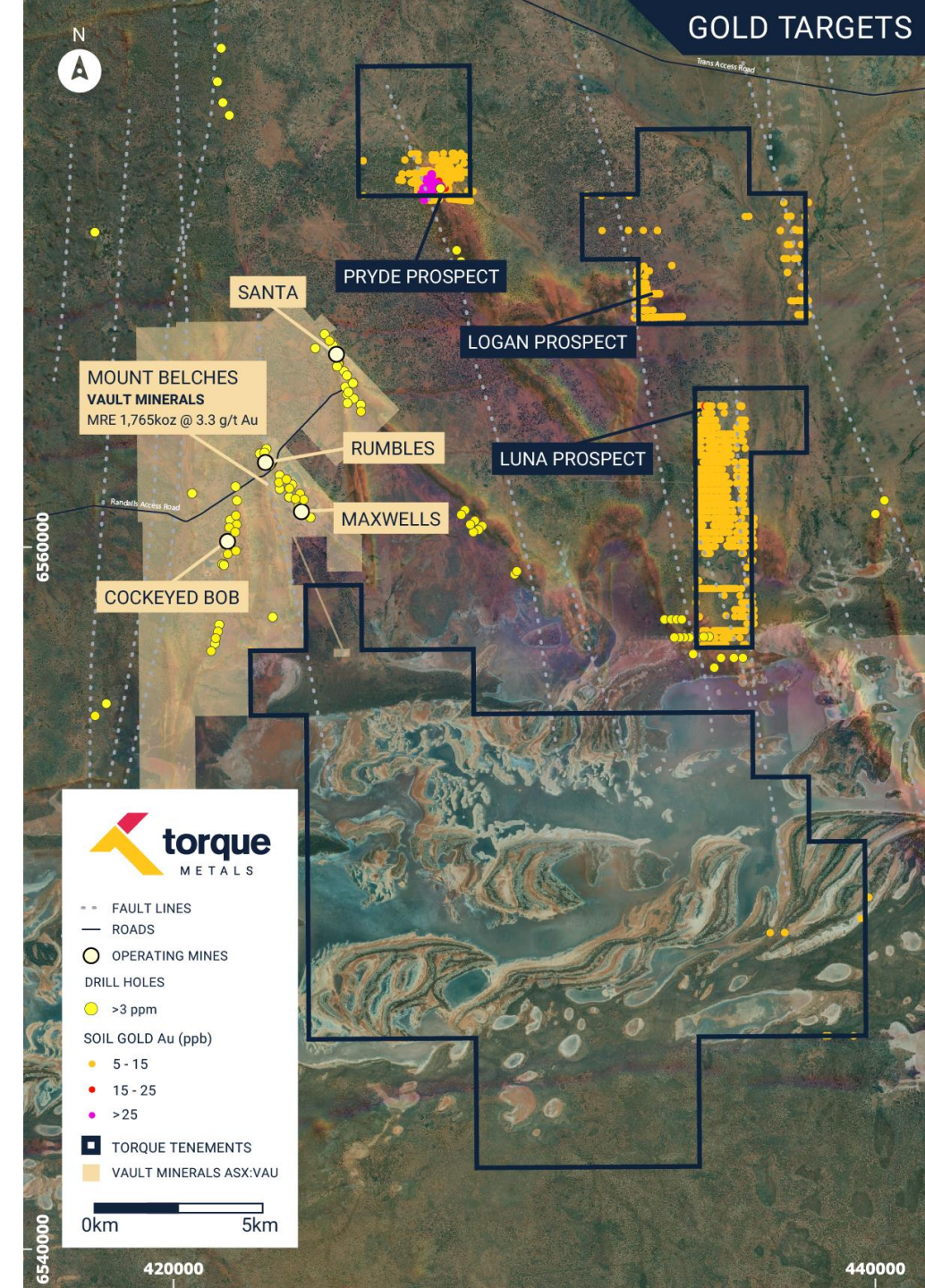
POTENTIAL FOR GOLD MINERALISATIONS

Mount Belches Mining Centre

¹Vault Minerals (ASX: VAU) MRE 1,765koz @ 3.3 g/t Au

GOLD CONFIRMED AT PRYDE PROSPECT

Drilling intersected mineralisation at **Pryde Prospect**. Archean geology suggests Mount Belches analogous gold system.



¹ Refer to Vault Minerals Web Page, Operations, Mount Monger Operations. 24 November 2024¹

TORQUE METALS : EXPLORATION STRATEGY

IN SUMMARY

- ✓ RC drill results ~3,000m
- ✓ Soils campaign on previously untested land holdings
- ✓ Additional metallurgical studies underway to further de-risk and assess production options.
- ✓ Resource growth by testing strike extensions, interlinking structures, and depth potential
- ✓ Drilling at tenements adjacent to world-class deposits (Goldfields, Westgold)



A COMPELLING INVESTMENT PROPOSITION

WHY INVEST IN TORQUE



EFFICIENT
CAPITAL
STRUCTURE

250million shares
with open register



CONSISTENT
GOLD GRADES

250,000oz @ 3.1 g/t Au
of open and growing
gold resources¹



13 MINING
4 PROSPECTING
38 EXPLORATION
LICENCES

~1200km² of granted
mining tenure in world-
class geology



MULTI-SKILLED
TECHNICAL
PERSONNEL

In-house expertise in
Geophysics, Geology,
Engineering, Resources



TRANSPORT
INFRASTRUCTURE
AND PROCESSING
PLANTS

Close to existing
processing facilities
(Goldfields, Westgold)



PARIS
NEW DAWN AND
PENZANCE GOLD
POTENTIAL

Unveiling gold potential in the
West Australian Goldfields



External references

- ✓ Gold Fields Limited. (2018). St Ives Gold Mine: Australia operations. Retrieved November 26, 2024, from <https://www.goldfields.com/reports/annual-report-2018/mrr/australia-st-ives-gold-mine.php>
- ✓ Gold Fields Limited. (2014, July 15). *St Ives Gold Mine*. Gold Fields. <https://www.goldfields.com/pdf/investors/shareholder-information/transcripts/2014/australia-site-visits/st-ives-gold-mine.pdf>
- ✓ Jones, R. (November 2024). Geology at the Mandilla and Feysville Projects, West Australian Goldfields. Presented at the Noosa Mining Investor Conference. Astral Resources. <https://api.investi.com.au/api/announcements/aar/5cbd151d-145.pdf>
- ✓ Maximus Resources (November 2024). Annual General Meeting Presentation. <https://maximusresources.com/announcements/6618837>.
- ✓ Maximus Resources. (2024, October 2). Eagles Nest drilling confirms high-grade gold and expands shallow mineralisation. Retrieved from <https://maximusresources.com/announcements/6559037>
- ✓ Westgold Resources. (2024). Mineral resource estimate and ore reserves. Westgold Resources. <https://www.westgold.com.au/pdf/b11113f2-fc23-486c-bd28-e23fc85e348e/2024-Mineral-Resource-Estimate-and-Ore-Reserves.pdf>
- ✓ Vault Minerals. (n.d.). Mount Monger operations. Retrieved November 26, 2024, from <https://www.vaultminerals.com/operations/mount-monger>



TORQUE METALS LIMITED ASX:TOR
U1, LEVEL 16, 1 SPRING STREET,
PERTH, WA 6000

ABN 44 621 122 905
+61 (0) 410 280 809
admin@torquemetals.com

torquemetals.com