

# INVESTOR PRESENTATION

## Yataga Copper Project

PRECIOUS AND BASE METALS EXPLORER

2024 AGM Presentation



EMU



# Forward Looking Statements



This presentation has been prepared by EMU NL. This document contains background information about EMU NL current at the date of this presentation. The presentation is in summary form and does not purport be all inclusive or complete. Recipients should conduct their own investigations and perform their own analysis in order to satisfy themselves as to the accuracy and completeness of the information, statements and opinions contained in this presentation.

This presentation is for information purposes only. Neither this presentation nor the information contained in it constitutes an offer, invitation, solicitation or recommendation in relation to the purchase or sale of shares in any jurisdiction.

This presentation may not be distributed in any jurisdiction except in accordance with the legal requirements applicable in such jurisdiction. Recipients should inform themselves of the restrictions that apply in their own jurisdiction. A failure to do so may result in a violation of securities laws in such jurisdiction.

This presentation does not constitute investment advice and has been prepared without taking into account the recipient's investment objectives, financial circumstances or particular needs and the opinions and recommendations in this presentation are not intended to represent recommendations of particular investments to particular persons. Recipients should seek professional advice when deciding if an investment is appropriate. All securities transactions involve risks, which include (among others) the risk of adverse or unanticipated market, financial or political developments.

To the fullest extent permitted by law, EMU NL, its officers, employees, agents and advisers do not make any representation or warranty, express or implied, as to the currency, accuracy, reliability or completeness of any information, statements, opinions, estimates, forecasts or other representations contained in this presentation. No responsibility for any errors or omissions from this presentation arising out of negligence or otherwise is accepted.

This presentation may include forward-looking statements. Forward-looking statements are only predictions and are subject to risks, uncertainties and assumptions which are outside the control of EMU NL. Actual values, results or events may be materially different to those expressed or implied in this presentation. Given these uncertainties, recipients are cautioned not to place reliance on forward looking statements. Any forward-looking statements in this presentation speak only at the date of issue of this presentation. Subject to any continuing obligations under applicable law and the ASX Listing Rules, EMU NL does not undertake any obligation to update or revise any information or any of the forward-looking statements in this presentation or any changes in events, conditions or circumstances on which any such forward looking statement is based.

# Competent Person's Report



## Competent Person Disclosure

The information in this disclosure relates to the exploration activities undertaken by EMU NL conducted over its exploration tenements in Australia. All information in this presentation has previously been recorded in the public domain.

EMU NL is not aware of any new information or data that materially affects the information included in the original market announcements.

The information in this presentation is based on, and fairly represents information and supporting documentation compiled by Mr Nigel Maund, a Competent Person who is consulting economic geologist to EMU NL. Mr Maund is a Fellow of the Australian Institute of Geoscientists, a Fellow of the Australian Institute of Mining and Metallurgy and has sufficient experience in the activities in which he undertakes to qualify as a Competent Person as defined in the 2012 edition of the "Australasian Code for Reporting of Exploration Results, Mineral Resources and Ore Reserves". Mr Maund consents to the inclusion herein of the matters based upon his information in the form and context in which it appears, and the Company confirms the form and context in which the Competent Persons findings are presented, have not been materially modified from the relevant original market announcements.

## Authorisation

This presentation has been authorized for release by Chief Executive Officer



# Corporate Overview

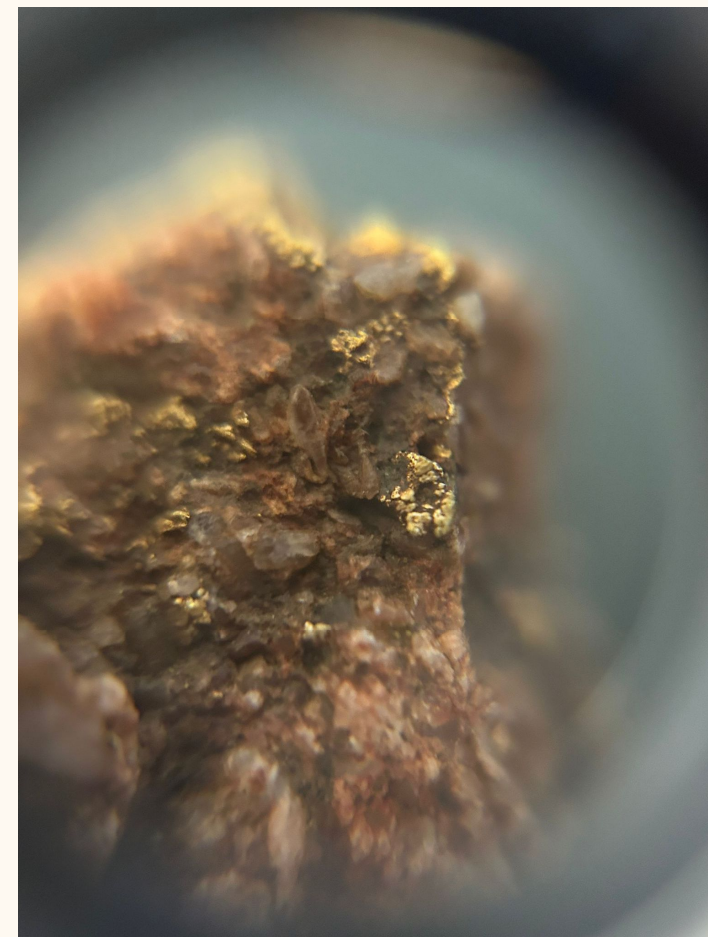


## BOARD & MANAGEMENT

Peter Thomas	Non-Executive Chairman
Gavin Rutherford	Non-Executive Director
Tim Staermose	Non-Executive Director

## CORPORATE STRUCTURE

Shares on Issue FP	146,499,187
Partly Paid Shares	2,516,256
Unlisted Options (various prices)	10,579,193
Performance Rights <b>AW0</b>	1,619,051
Share price (25/11/2024)	\$0.029
Market Cap (25/11/2024)	\$4.25M



## Slide 4

---

**AW0**

Are there still deferred FPOs?

Andrew Willis, 2024-11-25T01:13:16.396

# Georgetown Overview



## Georgetown Tenements

- 3 tenements located in Georgetown Qld – 850km<sup>2</sup>

## Yataga Igneous Complex

- Intrusive Igneous Complex ~70km<sup>2</sup> located largely within tenement EPM 27667

## Yataga Copper Project

- Yataga Igneous Complex that falls with the EPM 27667 comprising 2 exploration prospects



# Yataga Copper Project



## TWO PROSPECTS DEFINED

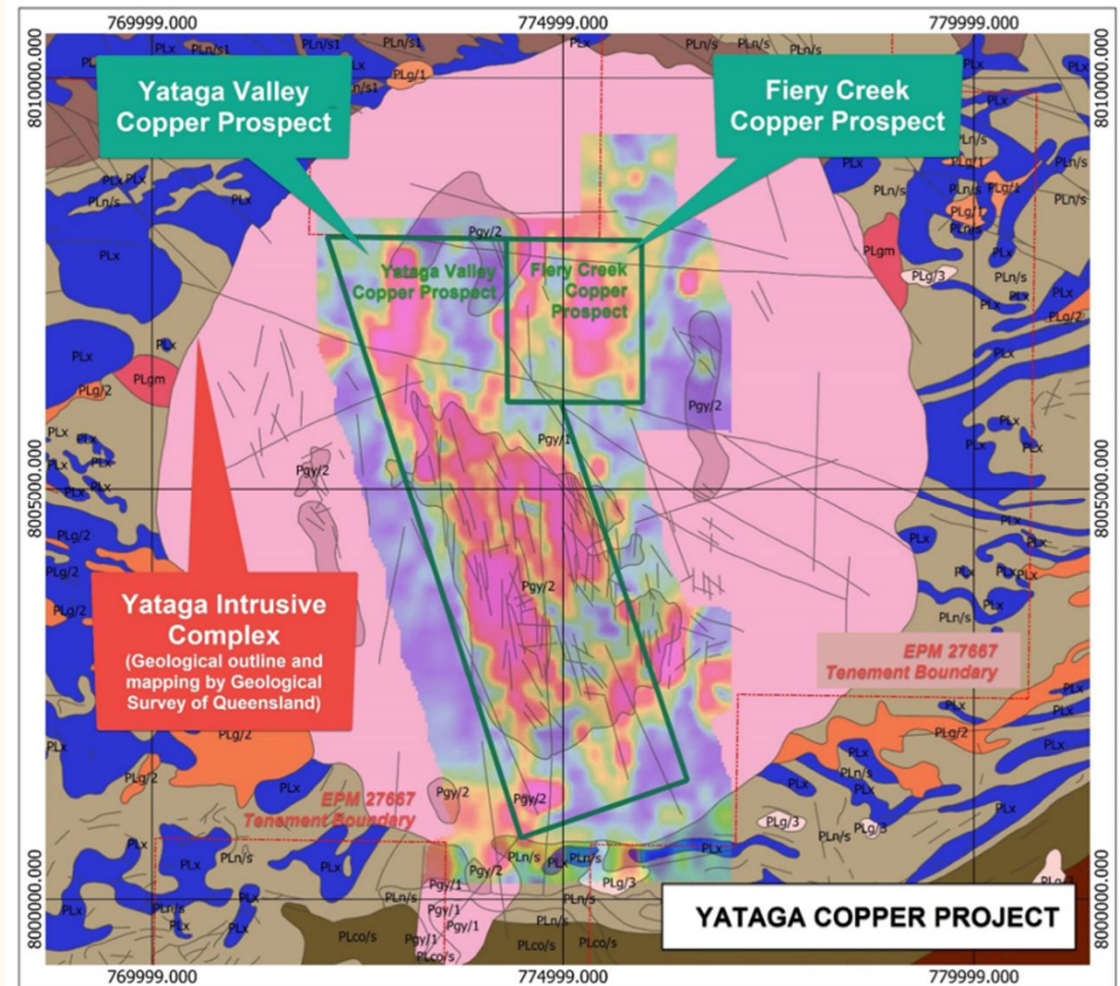
Two prospects overlaying the copper geochemistry anomalous zones within the Yataga Igneous Complex

### YATAGA VALLEY COPPER PROSPECT

- Most recent discovery of widespread surficial copper mineralisation along the NNW-SSE shear zone in the central part of the Yataga Copper Project

### FIERY CREEK COPPER PROSPECT

- EMU's original prospect discovery in northern area of the Yataga Copper Project



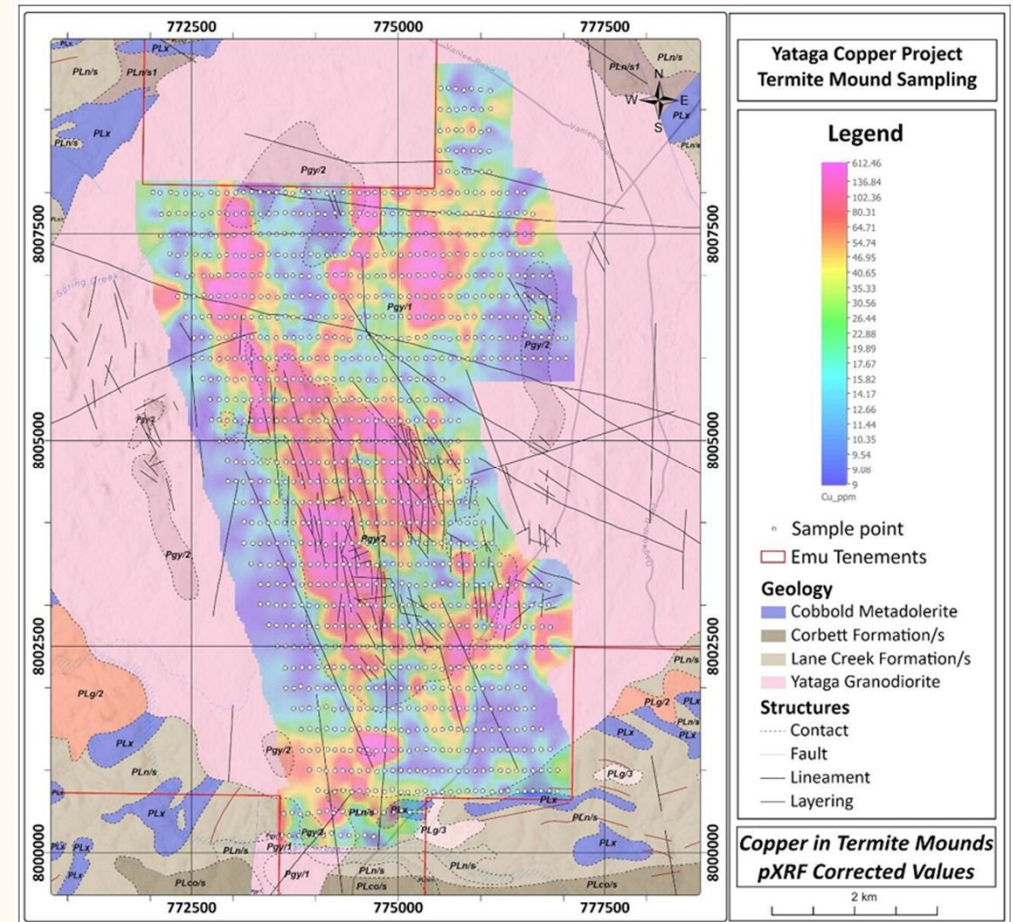


# 2024 Work Program



## HIGH-LEVEL EXPLORATION PROGRAM

- Comprehensive, systematic, methodical and measured exploration program
- Geophysical and geochemical surveys extended over the area of copper mineralisation
- Preliminary pXRF geochemistry to delineate the likely mineralisation fluid-flow geometry
- Aboriginal Heritage Survey completed
- In-field rock collection programme to provide correlation for modelling of hydrothermal fluid flows
- Ground geophysics (including induced polarity, resistivity and magneto telluric data) ~25km
- Helicopter Airborne Electromagnetic Survey ~200 line Kms





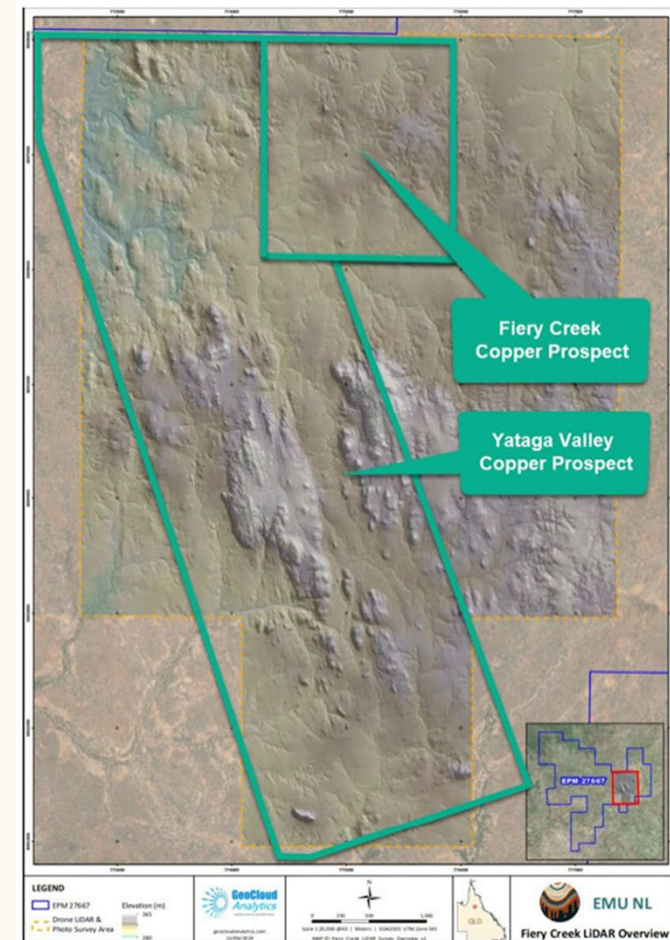
# Yataga Valley Copper Prospect



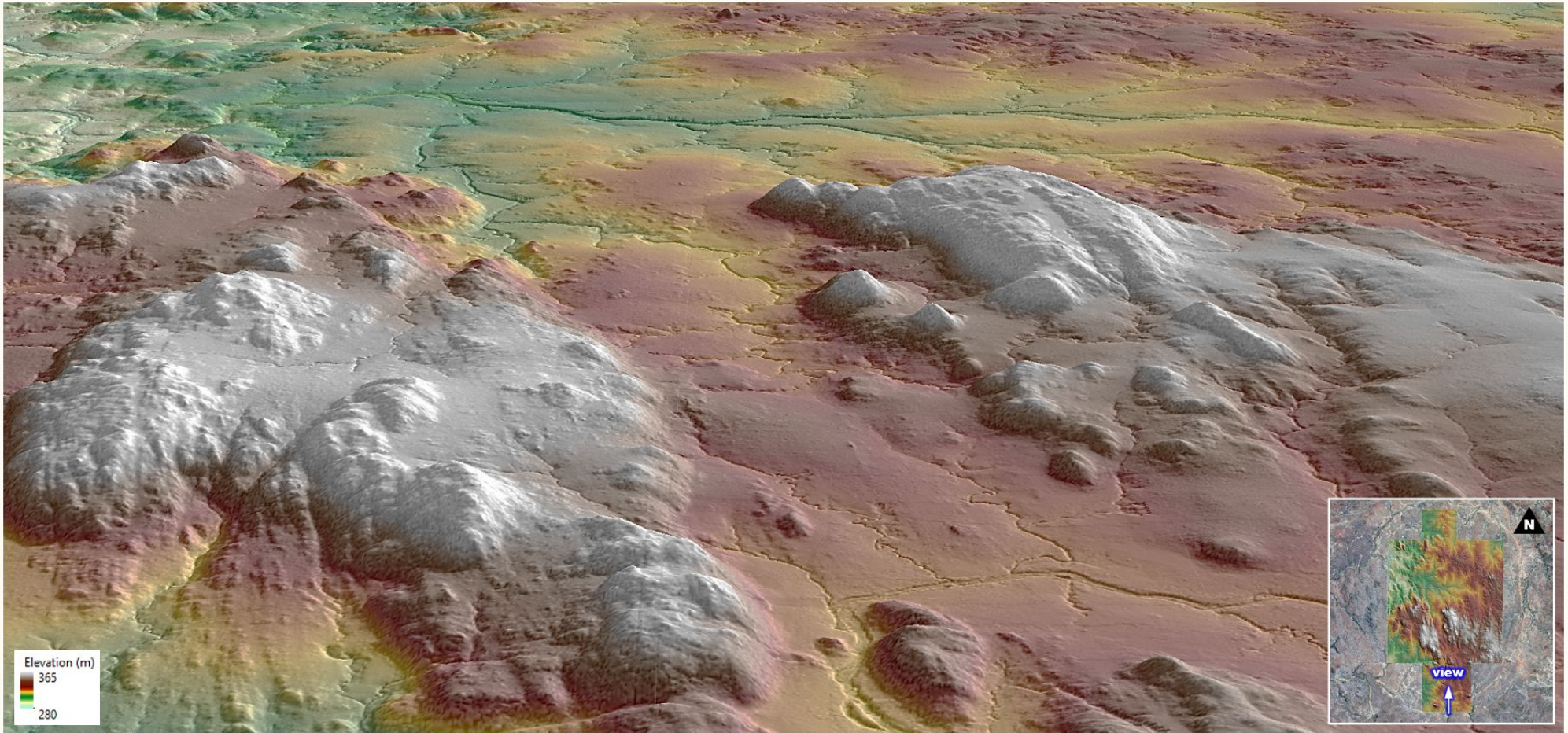
## A NEW PROSPECT

- Recent work has identified a combined area\* of 8km<sup>2</sup> of copper-in-soil anomalism with significant potential for expansion
- Modelling of the surface mineralisation indicates presence of multiple Cu-bearing intrusive centres at or close to surface
- Analogous to geological setting of the Highland Valley Copper Mines (British Columbia) – largest open pit mine in Canada
- “Plutonic copper porphyry” mineralisation provides encouragement for significant scale Yataga Copper Project

\* Including Fiery Creek Prospect



# Yataga Valley Copper Prospect



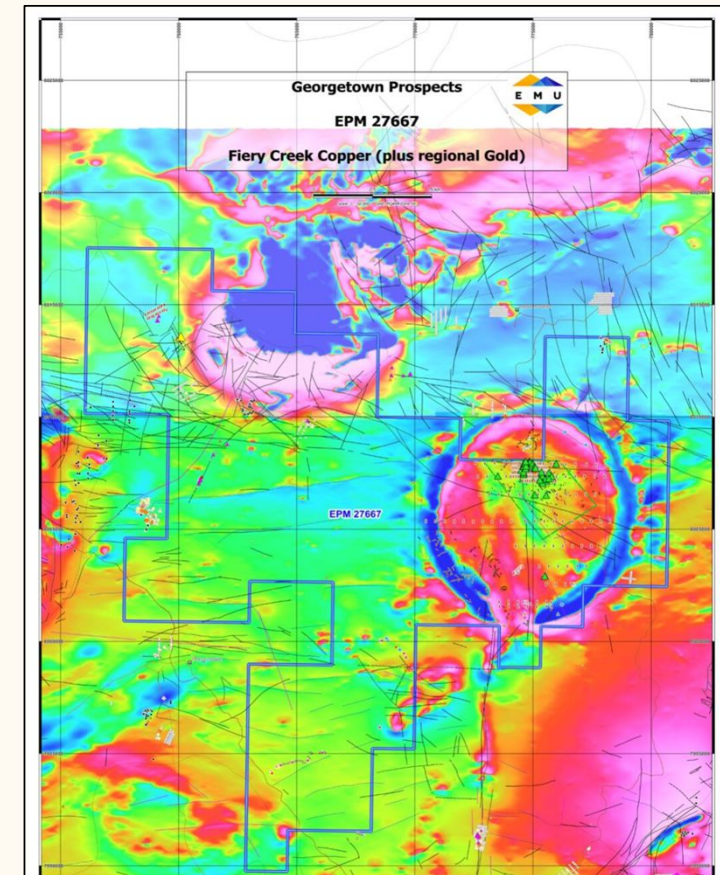


# Fiery Creek Prospect



## EMU'S ORIGINAL PROSPECT DISCOVERY

- Up to 32.5%\* copper, 14 ounces silver (460 g/t) from rock samples in quartz breccia hosted veins at Fiery Creek
- 1600m x 750m outcropping copper veining up to 2m wide
- Interpreted shallow constrained, scale porphyry copper system
- Veining has extensive secondary copper mineralisation at surface
- Multi element assays point to possibility of a significant copper polymetallic system
- Pathfinder element anomalism widespread
- Extensive soils, rock, stream and pXRF termite mound geochemistry surveys completed by EMU



\*ASX Release "Significant and Pervasive Copper Mineralisation Fiery Creek" 4 June 2024

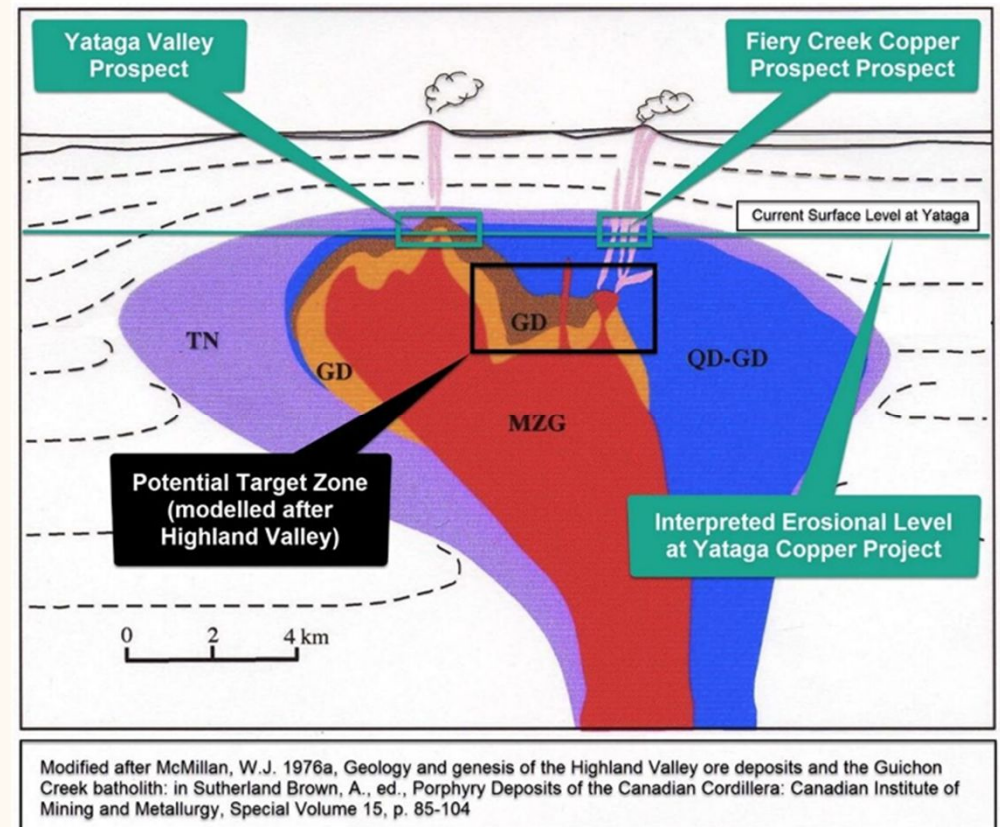


# Geology



## YATAGA COPPER PROJECT

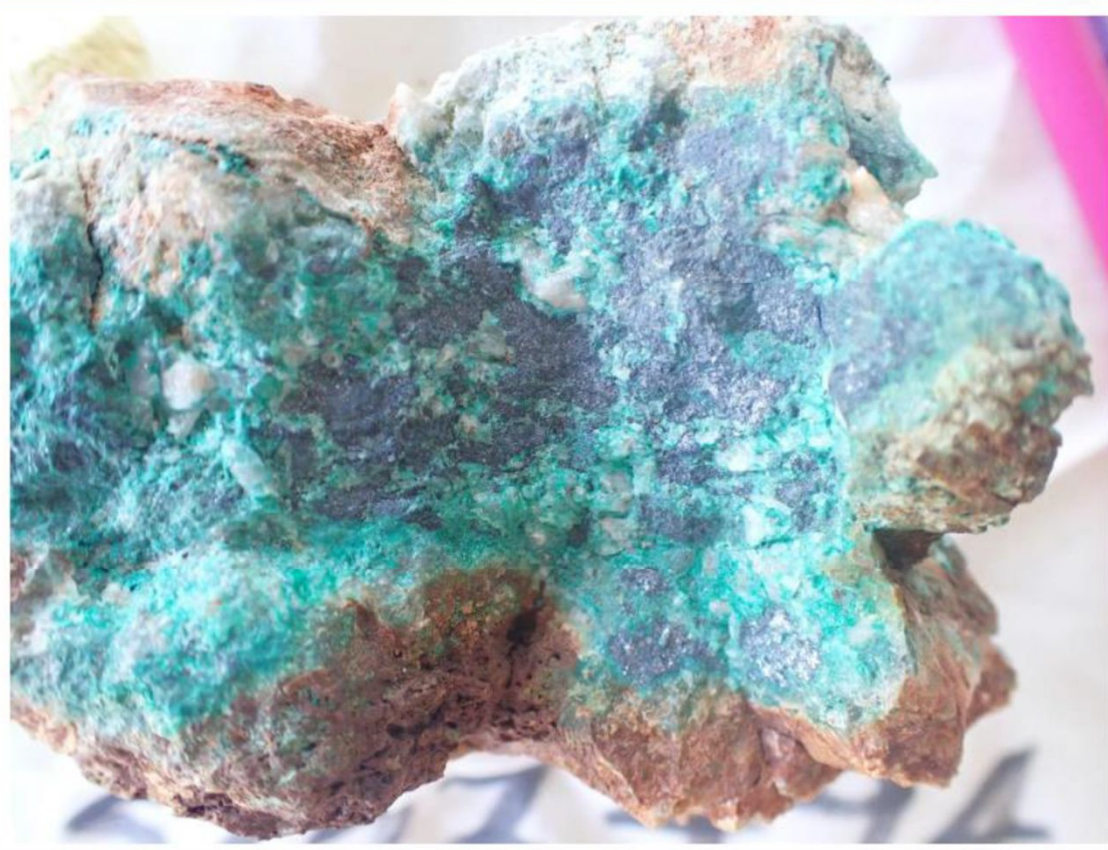
- Granodiorite, a massive, brittle and largely unreactive host
- Very large constrained system - unvented
- High grade, polymetallic, copper dominated quartz veins have infilled late brittle fractures at Fiery Creek
- Hydrothermal “leakage structures” developed with the roof of the potential subjacent porphyry copper system
- Modelling of the surface mineralisation indicates presence of multiple Cu-bearing intrusive centres at or close to surface
- Analogous to geological setting of the Highland Valley Copper Mine (British Columbia) – largest open pit mine in Canada
- “Plutonic copper porphyry” mineralisation provides encouragement for significant large-scale copper project



# Fiery Creek Vein Samples



Sample ESS02045 – A white, frothy to glassy quartz vein hosting abundant drusy cavities lined with euhedral prismatic quartz crystals with supergene malachite and chrysocolla developed over sooty tenorite



Sample ESS02094 – (460ppm Ag, 1.25% Ba, 23.51% Cu, 14ppm In). White frothy quartz vein invaded by a later massive sulphide event as a mix of black tenorite ( $\text{CuO}$ ) and sooty to dark grey chalcocite ( $\text{Cu}_2\text{S}$ ) replaced at its margins by crystalline fibrous malachite and minor chrysocolla



# 2025 Exploration Program



## 2025 DRILL PLANS- YATAGA COPPER PROJECT

- Detailed data analysis and evaluation of all 2024 exploration results underway - expected to identify high-priority drill targets
- Analysis from the combination of 2024 field work covering extensive geochemistry and geophysics surveys modelled for 3D geometry of copper mineralisation
- Drill programme to be announced in early 2025
- Drill programme to test extensive sub surface copper mineralisation targeted to commence in 1H 2025
- Build upon and expand footprint of known mineralisation zones
- Follow up field activities to identify new prospective areas within the broader Yataga Intrusive Complex





# Investment Summary



1. **Yataga Copper Project** a significant Australian copper porphyry discovery

- **Yataga Valley Copper Prospect**
- **Fiery Creek Copper Prospect**

2. Ongoing exploration activity to build on scale of Yataga Copper Project leading to the definition of **drill targets** in 2025

3. **Extensive gold and base metals** mineral endowment at Georgetown yet to be tested – significant scale prospect potential to be followed up

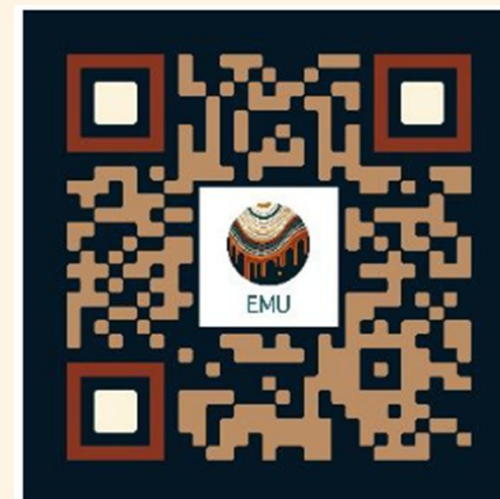




## Contact Us

**DOUG GREWAR CEO**  
[doug@emunl.com.au](mailto:doug@emunl.com.au)

**EMU NL**  
+61 (0)419 833604  
[www.emunl.com.au](http://www.emunl.com.au)  
[Investorhub.emunl.com.au](http://Investorhub.emunl.com.au)



EMU Investor Hub Signup

[info@emunl.com.au](mailto:info@emunl.com.au)

ABN 50 127 291 927

ASX:EMU  
ASX:EMUCA